

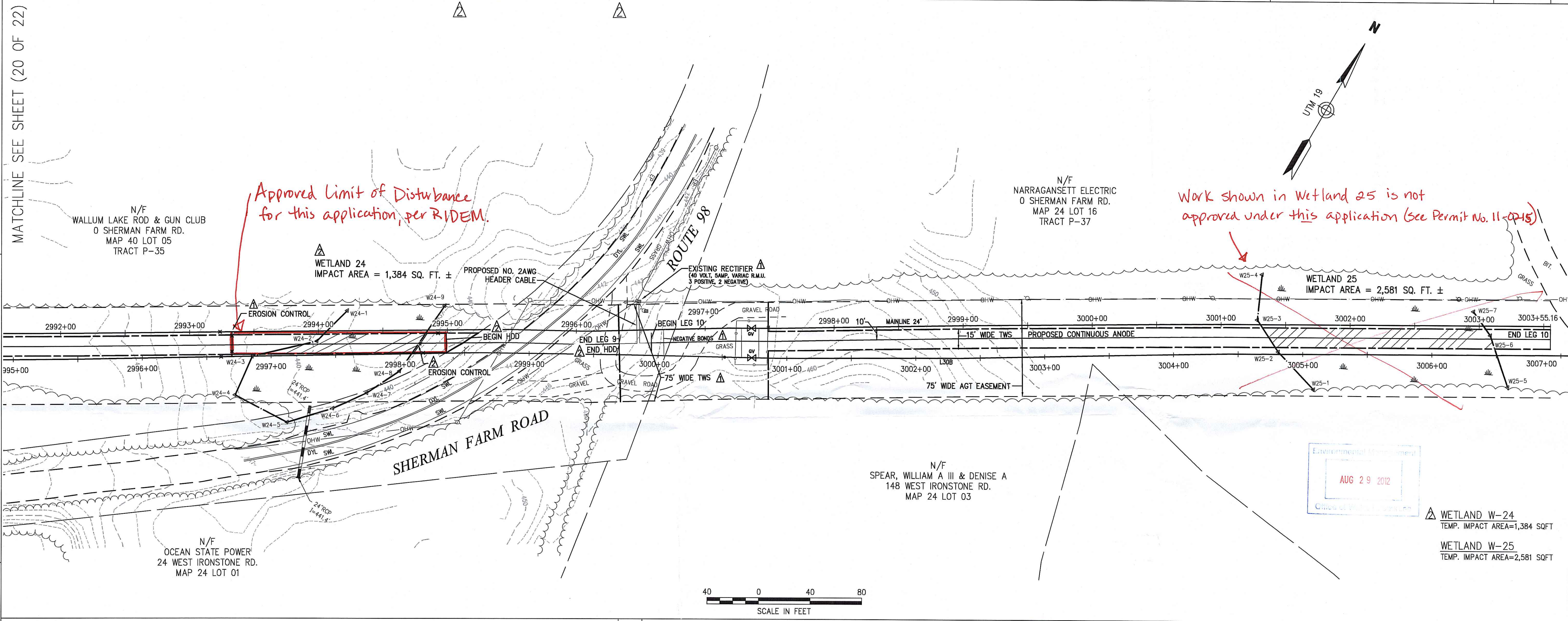
PROVIDENCE COUNTY RHODE ISLAND
TOWN OF BURRILLVILLE

RIGHT-OF-WAY TRACT NUMBERS OWNERSHIP/AGENCY	TRACT P-35	TRACT P-36	TRACT P-37
SURVEY DATA SURVEY COMPANY: VHB WATERTOWN MA FIELD BOOK: PAGES:	STA:2993+89 BEGIN W-24	STA:2994+78 END W-24 STA:2994+99 BEGIN HDD	STA:2996+33 END HDD STA:2996+58 BEGIN LEG 10
			STA:3001+37 BEGIN W-25
			STA:3003+10 END W-25
			STA:3003+55 END LEG 10

ALIGNMENT DETAIL

LEGEND

- TEMPORARY ACCESS ROAD (TAR)
- 15' WIDE TEMPORARY WORKSPACE (TWS)
- VEGETATED WETLAND IMPACT
- PROPERTY LINE
- EXISTING AGT EASEMENT
- PROPOSED ANODE
- PROPOSED HEADER CABLE
- 15'-WIDE TEMPORARY WORKSPACE
- TEMP. ACCESS ROAD
- MAINLINE
- EXISTING AGT PIPELINE
- DRAIN MANHOLE
- CATCH BASIN
- SEWER MANHOLE
- ELECTRIC MANHOLE
- TELEPHONE MANHOLE
- MANHOLE
- HAND HOLE
- WATER GATE
- FIRE HYDRANT
- GAS GATE
- STREET SIGN
- LIGHT POLE
- UTILITY POLE
- GUY POLE
- GUY WIRE
- WELL
- CNO COULD NOT OPEN
- NPV NO PIPES VISIBLE
- F.F.E.=45.27' FINISHED FLOOR ELEVATION
- EDGE OF PAVEMENT
- GUARD RAIL
- CHAIN LINK FENCE
- DRAINAGE LINE
- OVERHEAD WIRE
- UNDERGROUND ELECTRIC
- TELEPHONE LINE
- GAS LINE
- WATER LINE
- STONE WALL
- TREE LINE
- CENTERLINE STREAM
- VEGETATED WETLAND EDGE
- 50-FT PERIMETER WETLAND
- 100-FT RIVERBANK WETLAND
- 200-FT RIVERBANK WETLAND
- 100-YR FLOODWAY
- 200-YR FLOOD PLAIN
- EROSION CONTROL



General Notes

- THE PROPERTY LINES SHOWN ON THIS PLAN WERE COMPILED FROM LOCAL ASSESSOR'S PLATS AND ARE SHOWN GRAPHICALLY. VHB HAS NOT PERFORMED A FIELD SURVEY TO VERIFY THE PROPERTY LINES.
- THE EXISTING CONDITIONS SHOWN ON THIS PLAN WERE DEVELOPED FROM A COMBINED EFFORT OF AERIAL PHOTOGRAMMETRIC MAPPING BY COLE-EAST, BASED ON AERIAL PHOTOGRAPHS TAKEN ON MARCH 7, 2008, AND AUGMENTED BY AN ON-THE-GROUND SURVEY PERFORMED BY VHB DURING MAY 2011.
- HORIZONTAL DATUM IS BASED ON UTM 19 PROJECTIONS, NAD 1983.
- THE WETLANDS SHOWN ON THIS PLAN WERE DELINEATED IN THE SPRING OF 2011 BY TRC ENVIRONMENTAL CORP. AND FIELD SURVEYED BY VHB IN MAY 2011.
- PROPOSED CONSTRUCTION AND TYPICALS WERE DESIGNED BY OTHERS AND ARE SHOWN FOR GRAPHICAL PURPOSES ONLY.

Construction Notes

- ANY NECESSARY TRENCH DE-WATERING TO BE DIRECTED TO FILTER BAGS OR EQUIVALENT IN A MANNER SO AS NOT TO CAUSE EROSION/SEDIMENTATION.
- CONTRACTOR TO COMPLY WITH ALL APPLICABLE PROVISIONS OF SPECTRA'S ENVIRONMENTAL CONSTRUCTION EROSION/SEDIMENTATION CONTROL PLAN.
- THE FINAL IMPLEMENTATION AND LOCATION OF EROSION AND SEDIMENT CONTROLS WILL BE DETERMINED BY A SPECTRA INSPECTOR.
- ANODE STATIONING IS BASED ON 24" MAINLINE.
- THERE ARE NO PROPOSED GRADE CHANGES ASSOCIATED WITH THIS PROJECT. EXISTING GRADES SHALL BE RESTORED TO PRE-CONSTRUCTION CONDITIONS.

DEPARTMENT OF ENVIRONMENTAL MANAGEMENT
OFFICE OF WATER RESOURCES
FRESHWATER WETLANDS PROGRAM
APPROVED WITH CONDITIONS
AS SPECIFIED IN THE LETTER OF APPROVAL
DATED SEP 4 2012 FILE # 12-0147
NO CHANGES ALLOWED WITHOUT PRIOR APPROVAL
APPROVED PLANS MUST BE AT CONSTRUCTION SITE

Kindly be advised that this Permit is not equivalent to a verification of the type or extent of freshwater wetlands on site.

CHRISTOPHER C. DANFORTH
No. 1957
PROFESSIONAL LAND SURVEYOR

NOT FOR CONSTRUCTION

DWG. NO.	REFERENCE DWG.	REV	DSN	CK	DESCRIPTION

<p>VHB Vernisse Hangen Brustlin, Inc. Transportation Land Development Environmental Services 101 Walnut Street, P.O. Box 9151 Watertown, Massachusetts 02471-9151 617 924 1770 - FAX 617 924 2266</p>	ENGINEERING APPROVALS			
	DRAWN BY:	BID	CONSTRUCTION	
	SLT	11/09		
	REV.	3/29		
	REV.	8/22		
TITLE	SIGNATURE	DATE	SIGNATURE	DATE

MAINLINE BURRILLVILLE GROUNDDBED		ALIGNMENT SHEET	
LOC. BURRILLVILLE RI		YEAR: 2012	W.O. 004110684
		SCALE: 1"=40'	DWG. C-355A 21 OF 22
		REV.	