

N/F THE TIN MAN, LLC
BK 1387 PG 291
(SEE PB 24, PG 11)

PLAT 105 LOT 101
87 ACRES±

PL 104 LT 125
N/F JEFFREY KIELBASA

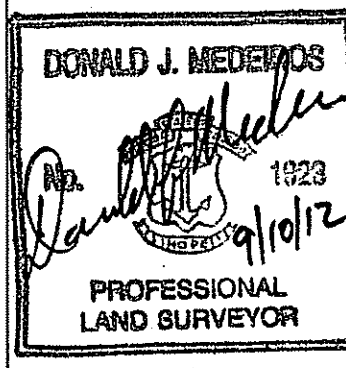
- NOTES:
- 1) APPLICANT/OWNER: EAGLEVILLE PROPERTIES, INC.
896 FISH ROAD
PO BOX 5
TIVERTON, RI 02878
 - 2) DEED REFERENCE: BOOK 1387 PAGE 287
 - 3) ASSessor's REF.: PLAT 105 LOT 101
 - 4) PLAN REF.: PLAN TITLED: "PROPERTY SURVEY, RHODE ISLAND REFINING CORPORATION, TIVERTON, RI BY NEW ENGLAND SURVEY SERVICE, INC., 255 ATLANTIC AVE BOSTON, MA, DATE SEPT. 16, 1957, SCALE: 1"=100"
 - 5) WETLANDS DELINEATED BY NATURAL RESOURCE SERVICES, INC. IN AUGUST, 2012.
 - 6) THE LOCUS IS IN FLOOD ZONE "C".

- LEGEND
- ✕ WF B-7 WETLAND FLAG
 - CL ASSF
 - x—x— WIRE FENCE
 - Edge of Woods
 - DRILL HOLE FOUND
 - Stone Wall
 - CATCH BASIN
 - Culvert
 - GWT #9 ● SOIL EVALUATION
 - Drain Line
 - UTILITY POLE
 - FIRE HYDRANT



NOTE: WETLAND RESOURCE AREAS TO BE VERIFIED ARE AS FOLLOWS:
 *FLAG SERIES B-1 THROUGH B-45
 *FLAG SERIES C-1 THROUGH C-24
 *AREA SUBJECT TO STORM FLOWAGE THAT EXTENDS FROM FISH ROAD TO WETLAND FLAG B-27

THIS PLAN CONFORMS TO A CLASS III SURVEY STANDARD AS ADOPTED BY THE RHODE ISLAND BOARD OF REGISTRATION FOR PROFESSIONAL LAND SURVEYORS.
Donald J. Medeiros 9/10/12
 DONALD J. MEDEIROS PLS #1923

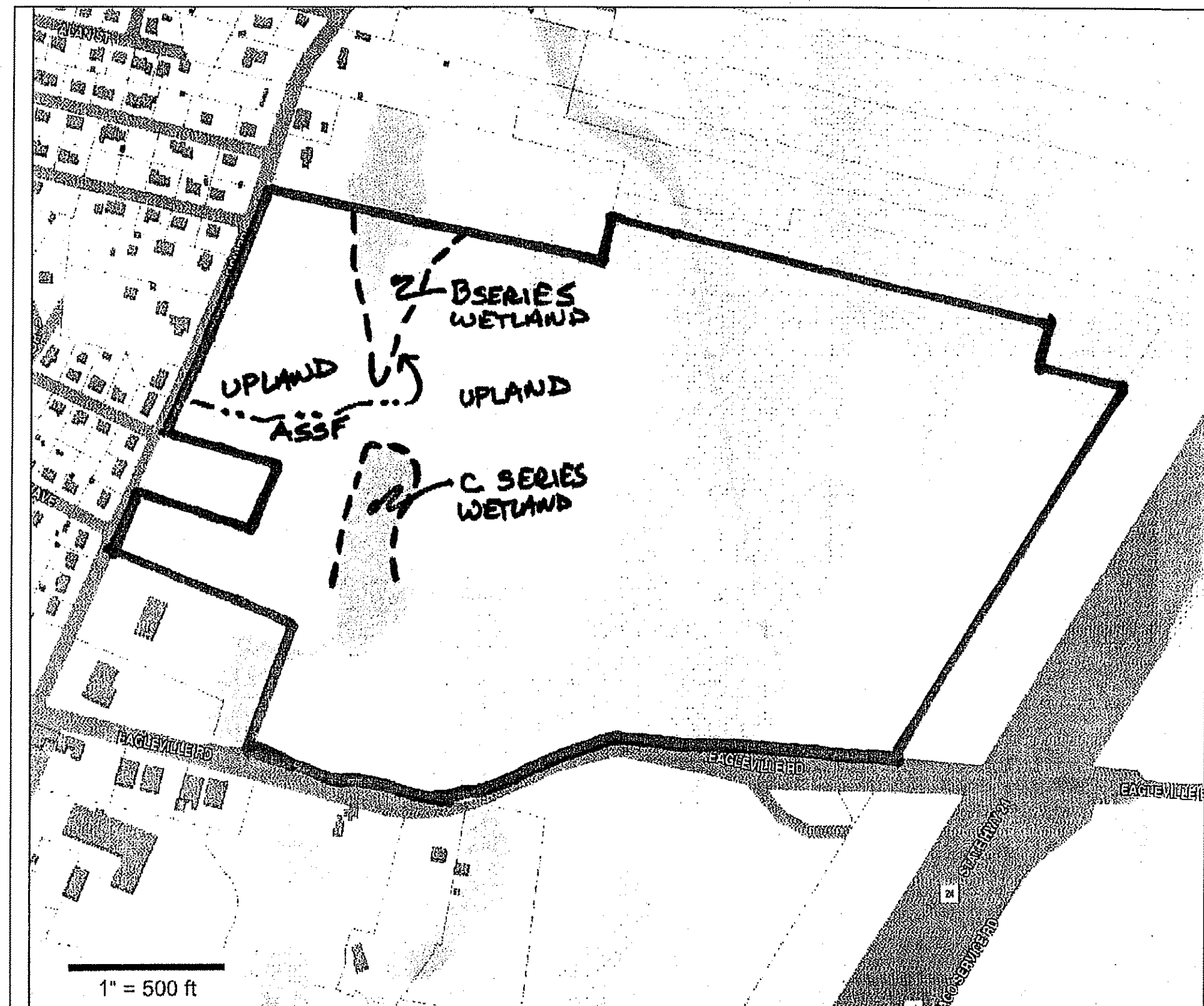


WETLAND EDGE VERIFICATION PLAN
 PREPARED FOR
EAGLEVILLE PROPERTIES, INC.
 PLAT 105 LOT 101
 FISH ROAD & EAGLEVILLE ROAD
 TIVERTON, RHODE ISLAND
 SCALE: 1"=40' DATE: SEPTEMBER 9, 2012

REVISION: JOB #11-039
 SHEET 1 OF 2

291 LONG HIGHWAY
 LITTLE COMPTON, RI 02857
 (401) 592-1302

RECEIVED
 SEP 11 2012
 Department of Environmental Management
 Office of Technical & Customer Assist.

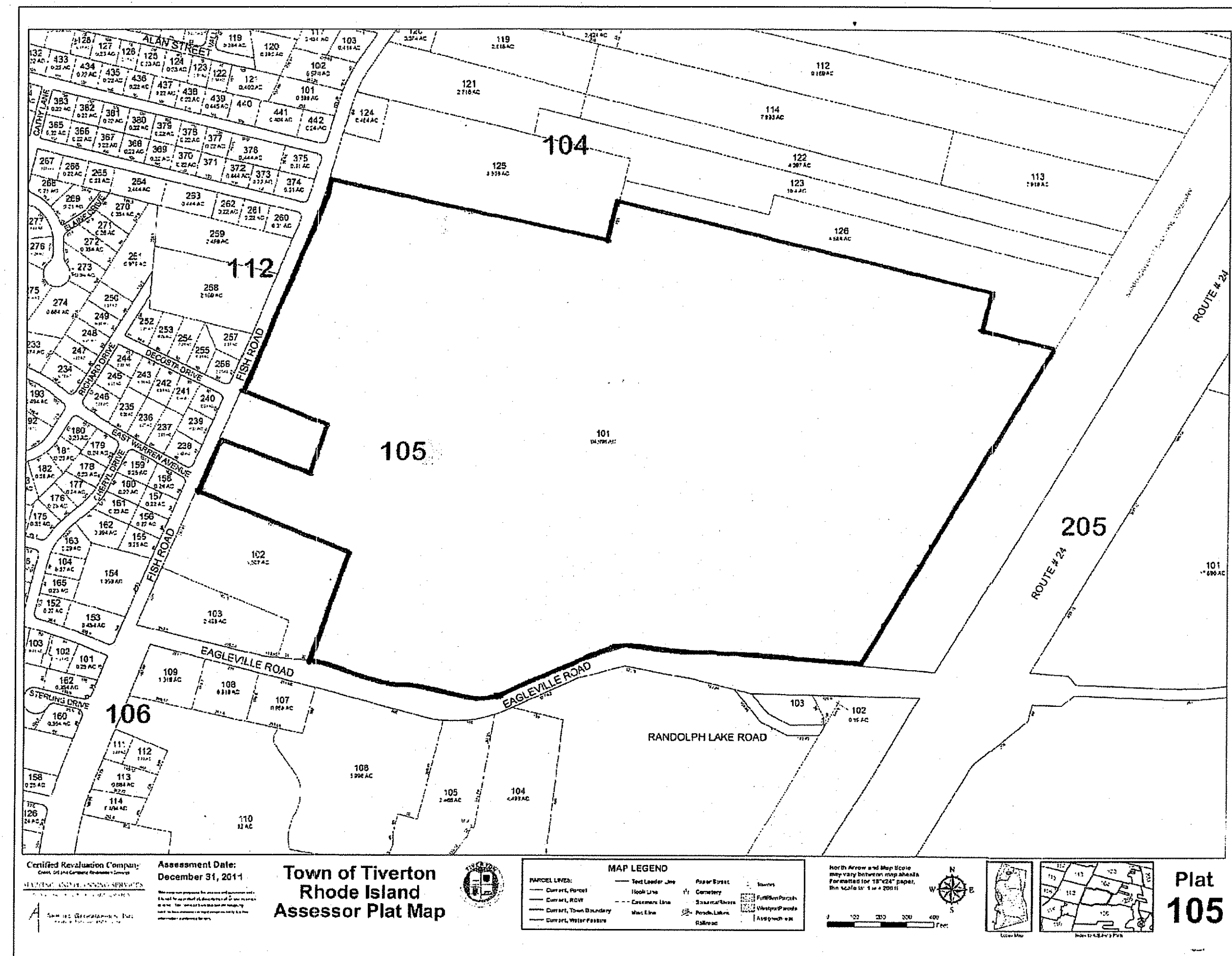


WETLAND MAP

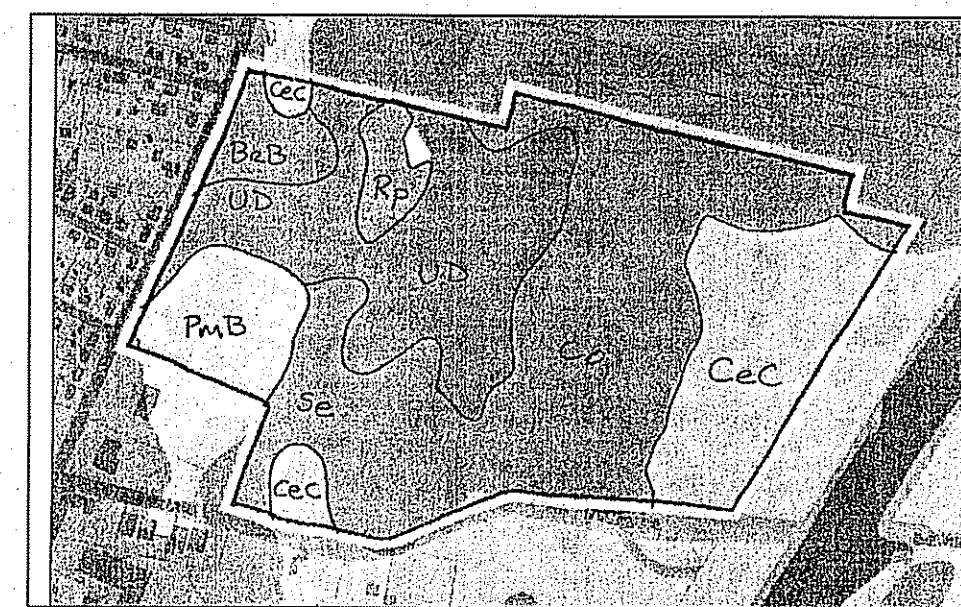


AERIAL PHOTO

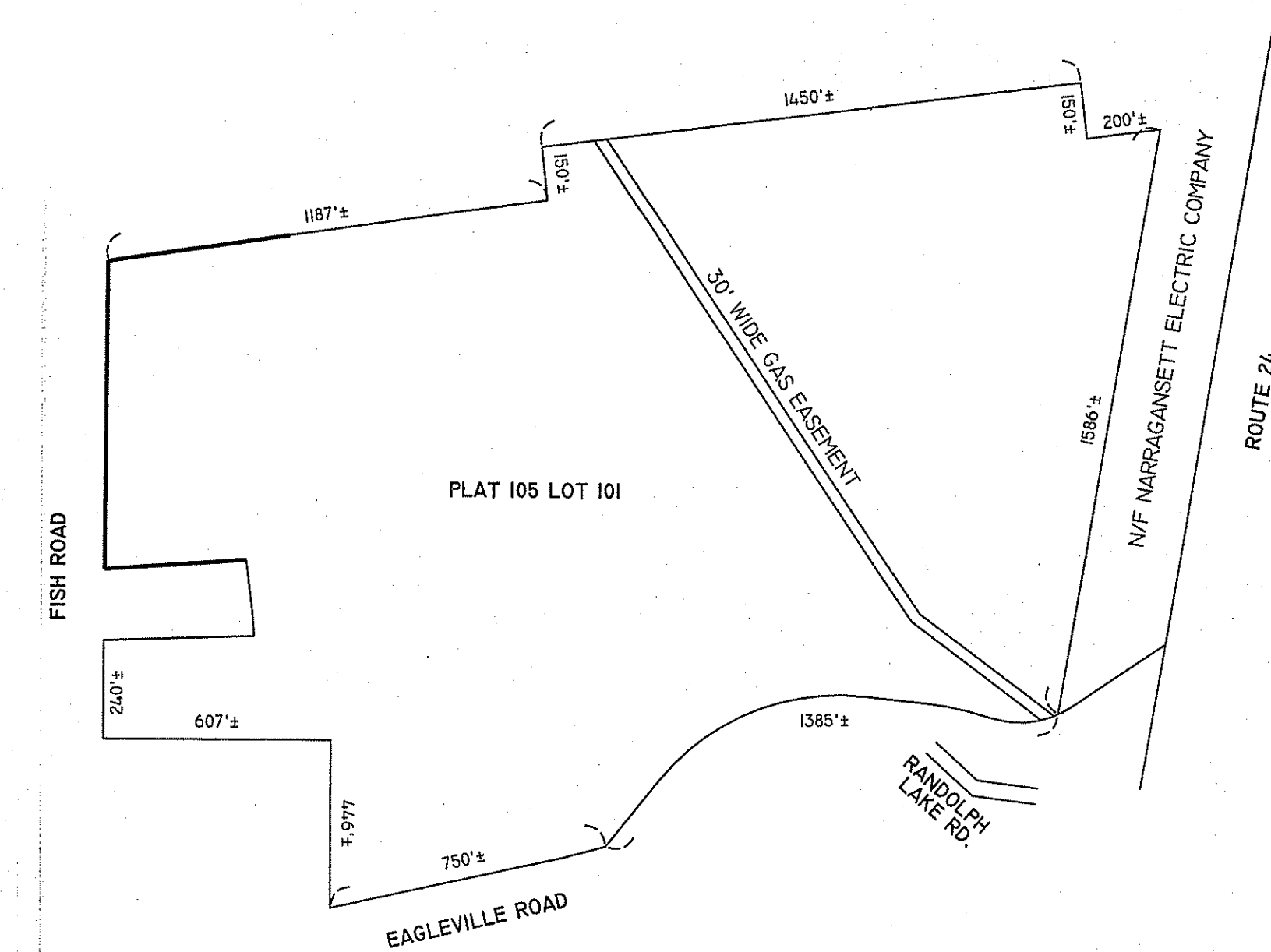
- NOTES:
- 1) APPLICANT/OWNER: EAGLEVILLE PROPERTIES, INC.
896 FISH ROAD
TIVERTON, RI 02878
PO BOX 5
 - 2) DEED REFERENCE: BOOK 1587 PAGE 287
 - 3) ASSESSOR'S REF.: PLAT 105 LOT 101
 - 4) PLAN REF.: PLAN TITLED: "PROPERTY SURVEY, RHODE ISLAND REFINING CORPORATION, TIVERTON, RI BY NEW ENGLAND SURVEY SERVICE, INC., 255 ATLANTIC AVE BOSTON, MA, DATE SEPT. 16, 1957, SCALE: 1"=100'
 - 5) WETLANDS DELINEATED BY NATURAL RESOURCE SERVICES, INC. IN AUGUST, 2012.
 - 6) THE LOCUS IS IN FLOOD ZONE "C".



LOCUS ON ASSESSOR'S MAP



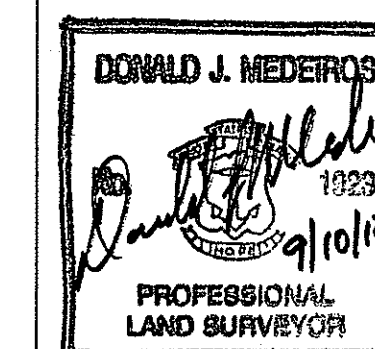
SOIL MAP



PERIMETER MAP
1"=400'

THIS PLAN CONFORMS TO A CLASS III SURVEY STANDARD AS ADOPTED BY THE RHODE ISLAND BOARD OF REGISTRATION FOR PROFESSIONAL LAND SURVEYORS.

Donald J. Medeiros 9/10/12
DONALD J. MEDEIROS PLS #1923



WETLAND EDGE VERIFICATION PLAN
PREPARED FOR
EAGLEVILLE PROPERTIES, INC.
PLAT 105 LOT 101
FISH ROAD & EAGLEVILLE ROAD
TIVERTON, RHODE ISLAND
SCALE: 1"=40' DATE: SEPTEMBER 9, 2012

REVISION: SHEET 2 OF 2 JOB #11-039

291 LONG HIGHWAY
LITTLE COMPTON, RI 02837
(401) 592-1302