

# Plans

Issued for: **Request for Preliminary Determination**

Date Issued: January 17, 2013

Latest Issue: January 17, 2013

## Index

| No. | Drawing Title                         | Latest Issue |
|-----|---------------------------------------|--------------|
| C-1 | Title Sheet                           | 1-17-2013    |
| C-2 | General Notes and Details             | 1-17-2013    |
| C-3 | Rhode Island Reliability Project Plan | 1-17-2013    |

# National Grid Rhode Island Reliability Project

## Proposed Switch Structure Access Putnam Pike Smithfield, Rhode Island

JAN 24 2013

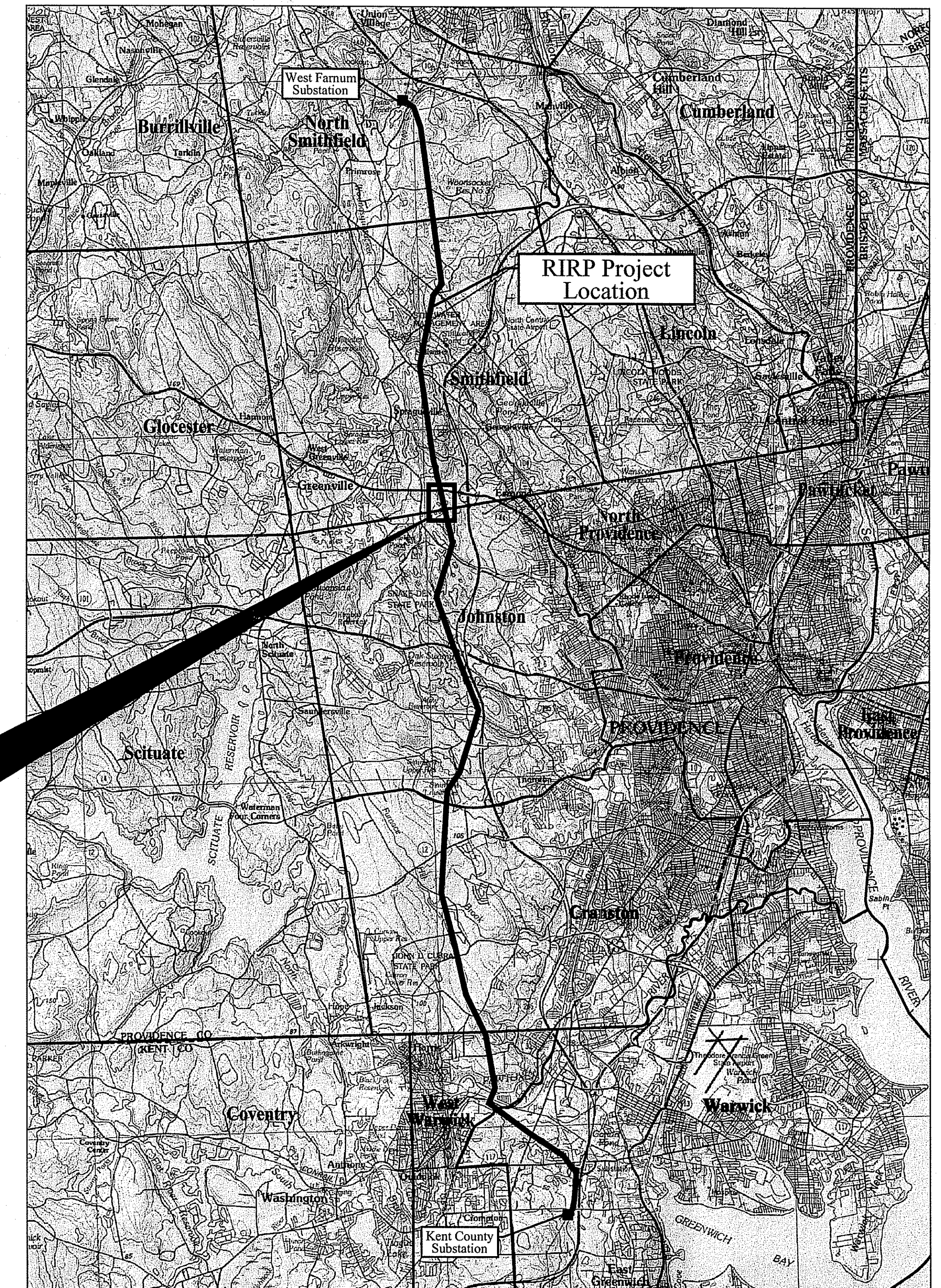
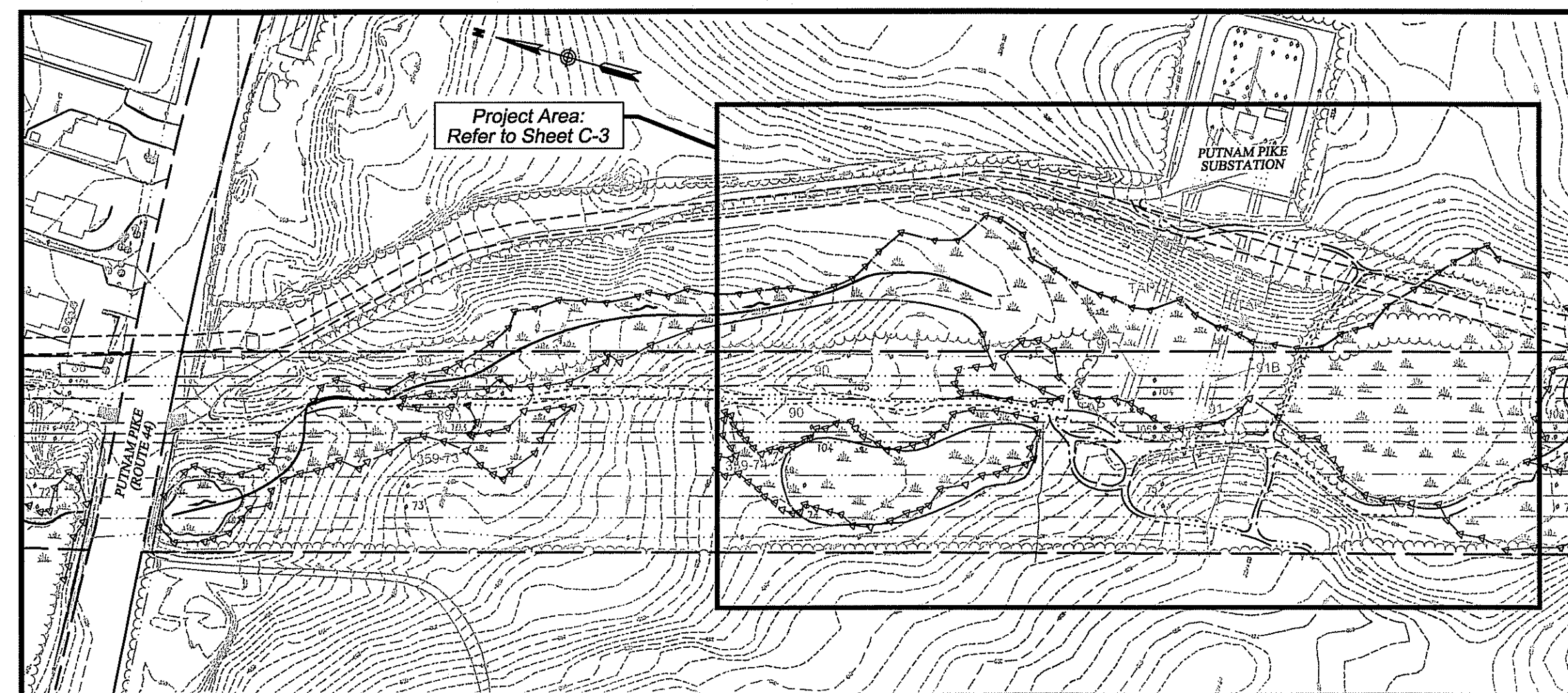


**VHB**  
Vanasse Hangen Brustlin, Inc.  
Transportation  
Land Development  
Environmental Services

10 Dorrance Street, Suite 400  
Providence, Rhode Island 02903  
401-272-8100 / FAX 401-273-9694

Owner/Applicant:

The Narragansett Electric Company  
d/b/a National Grid  
280 Melrose Street  
Providence, Rhode Island 02907  
508-389-2935 / FAX 508-389-2836



Locus Map

Note:  
Plan Depicting the Area also Shown on Sheet C-11 of Application to Alter  
File No. 09-0163 Plan Set Approved October 15, 2010.

Kindly be advised that this  
Permit is not equivalent to a  
verification of the type or extent  
of freshwater wetlands on site.

DEPARTMENT OF ENVIRONMENTAL MANAGEMENT  
OFFICE OF WATER RESOURCES  
FRESHWATER WETLANDS PROGRAM  
APPROVED WITH CONDITIONS  
AS SPECIFIED IN THE LETTER OF APPROVAL  
DATED FEB 15 2013 FILE # 13-0011  
NO CHANGES ALLOWED WITHOUT PRIOR APPROVAL  
APPROVED PLANS MUST BE AT CONSTRUCTION SITE

*Martin D. Wenzel*



