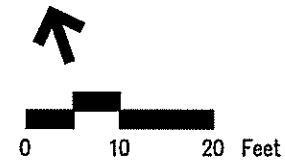
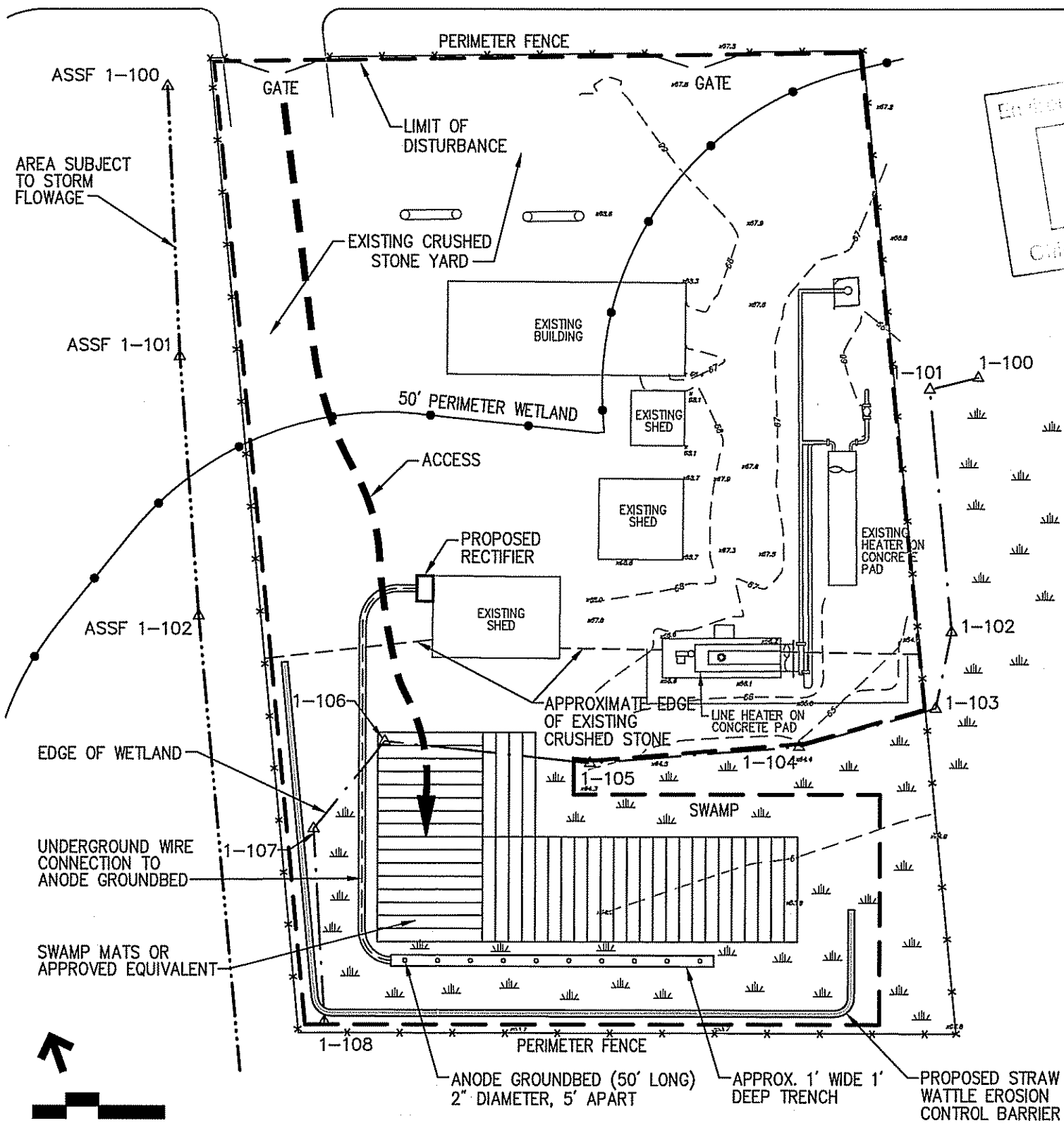


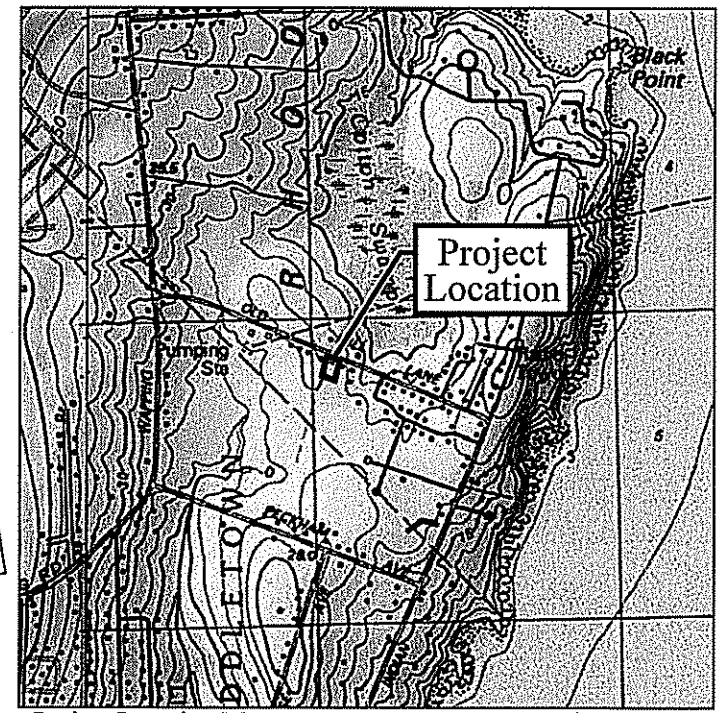
Legend

- Existing Ground Contour
- Limit of Disturbance

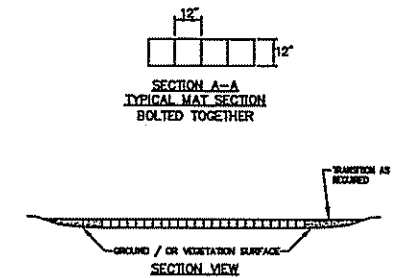
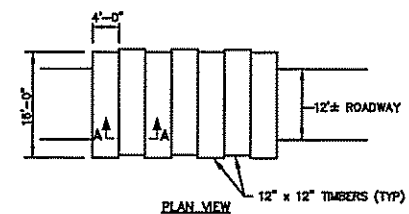
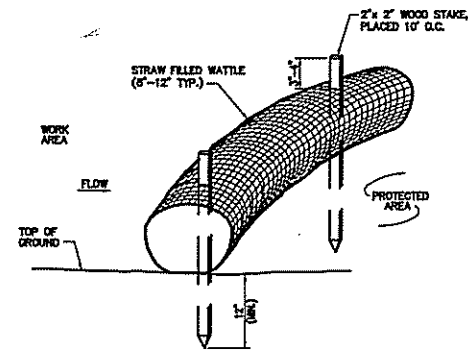
Old Mill Lane



Environmental Management
MAY 7 2013
Office of Water Resources



Project Location Map Scale: 1"=2000'



- Notes:**
- STRAW WATTLE SHALL BE AS MANUFACTURED BY EARTHSaver OR APPROVED EQUAL.
 - STRAW WATTLES SHALL OVERLAP A MINIMUM OF 12 INCHES.
 - STRAW WATTLE SHALL BE INSPECTED PERIODICALLY AND AFTER ALL STORM EVENTS, AND REPAIR OR REPLACEMENT SHALL BE PERFORMED PROMPTLY AS NEEDED.
 - TEMPORARY STRAW WATTLES TO BE REMOVED BY CONTRACTOR. ALL OTHERS TO REMAIN IN PLACE UNLESS DIRECTED OTHERWISE BY ENGINEER.
 - IF NON BIODEGRADABLE NETTING IS USED THE NETTING SHALL BE COLLECTED AND DEPOSED OFF SITE.

Straw Wattle - Erosion Control Barrier

Swamp Mat Detail

Per DEM: No Grade Changes are permitted, and all disturbed wetland soils are to be seeded and mulched.

Notes:

- Intersection of Old Mill Road and Wapping Road is approximately 1,500 feet west of Site.
- Site is located on Assessors Plat 68 Lot 73, AS SPECIFIED IN THE LETTERS OF APPROVAL APPROVED WITH CONDITIONS.
- Wetland flags located by GPS field survey conducted on March 7, 2012 by VHB. This survey conforms to a Class IV Standard as defined in the Procedural on Technical Standards for Performing Land Surveys in the State of Rhode Island and Providence Plantations. **FILE # 13-007A**
- Site plans baseline data obtained by aerial photography (RIGS - Department of Environmental Management Statewide Orthophotography - Spring 2011). This map meets national map accuracy standards for 1"=20' maps.

VHB
Vanasse Hangen Brustlin, Inc.
Transportation
Land Development
Environmental Services
10 Dornance Street, Suite 400
Providence, Rhode Island 02903
401.272.8100 • FAX 401.273.9694

No.	Revision	Date	Appr.

Designed by: _____ Drawn by: _____ Checked by: _____
CAD checked by: _____ Approved by: _____
Scale: As Noted Date: May 7, 2013
Project Title: Portsmouth Gate Station Anode Groundbed Installation Project
AP 68 Lot 73
135 Old Mill Lane
Providence, Rhode Island
Issued for: _____

RIDEM
Not Approved for Construction
Expires: 12/31/13

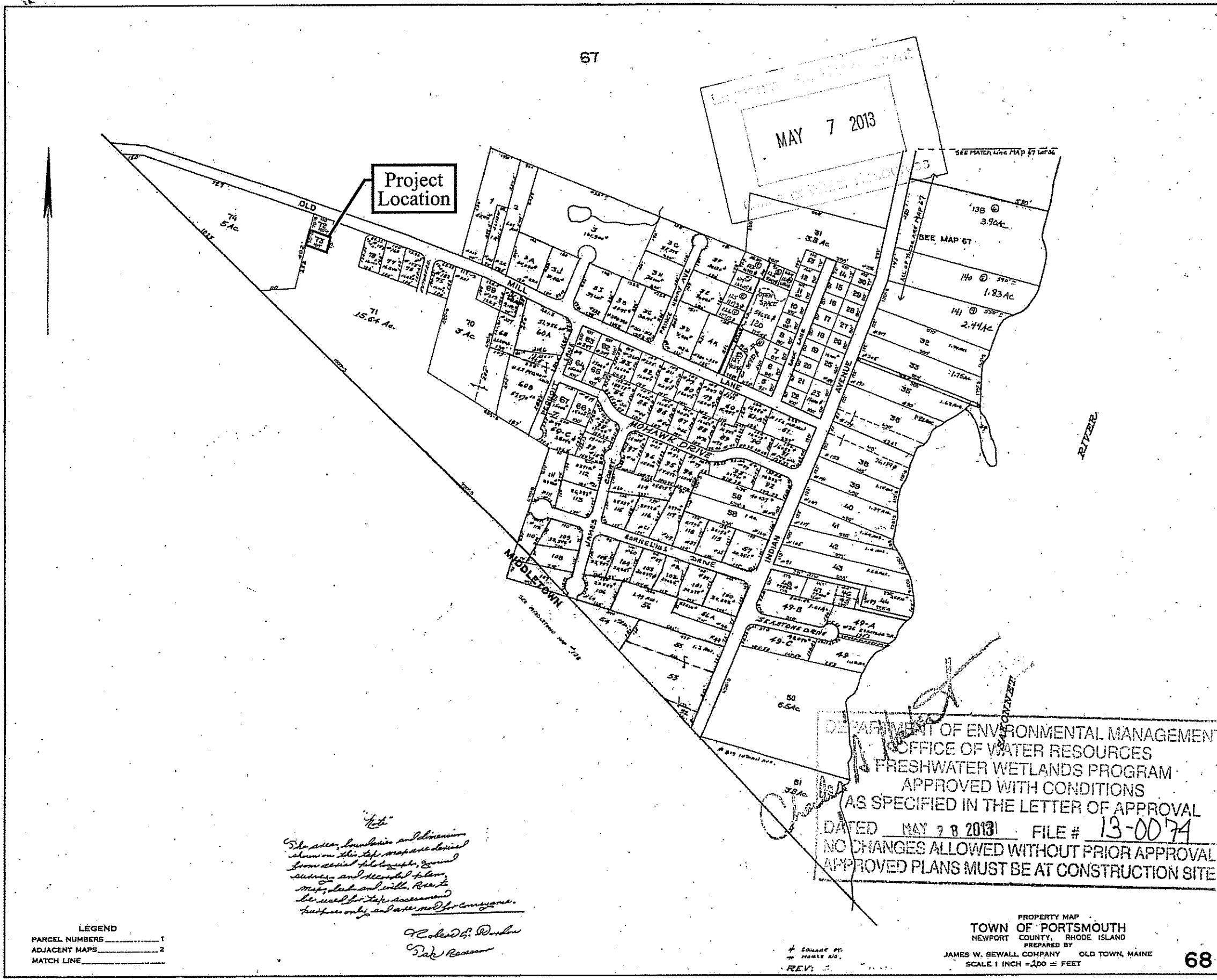
OFFICE OF ENVIRONMENTAL MANAGEMENT
OFFICE OF WATER RESOURCES
RISLANDS
LANDS PROGRAM
APPROVED WITH CONDITIONS
IN THE LETTER OF APPROVAL
FILE # 13-007A
C-1
NOT BE AT CONSTRUCTION SITE



Vanasse Hangen Brustlin, Inc.

Transportation
Land Development
Environmental Services

10 Dorrance Street, Suite 400
Providence, Rhode Island 02903
401.272.8100 • FAX 401.273.9694



DEPARTMENT OF ENVIRONMENTAL MANAGEMENT
OFFICE OF WATER RESOURCES
FRESHWATER WETLANDS PROGRAM
APPROVED WITH CONDITIONS
AS SPECIFIED IN THE LETTER OF APPROVAL
DATED MAY 7 8 2013 FILE # 13-0074
NO CHANGES ALLOWED WITHOUT PRIOR APPROVAL
APPROVED PLANS MUST BE AT CONSTRUCTION SITE

The area boundaries and dimensions shown on this site map are derived from aerial photographs, ground survey, and recorded plans. Map, plan and title. Not to be used for title, easement and purpose only and not for construction.

*Robert D. Dunbar
Rick Ross*

LEGEND
PARCEL NUMBERS 1
ADJACENT MAPS 2
MATCH LINE

PROPERTY MAP
TOWN OF PORTSMOUTH
NEWPORT COUNTY, RHODE ISLAND
PREPARED BY
JAMES W. SEWALL COMPANY OLD TOWN, MAINE
SCALE 1 INCH = 100 = FEET

68

No.	Revision	Date	Appr.

Designed by _____ Drawn by _____ Checked by _____
CAD checked by _____ Approved by _____
Scale Not to Scale Date May 7, 2013
Project Title

Portsmouth Gate Station
Anode Groundbed
Installation Project
AP 68 Lot 73
135 Old Mill Lane
Portsmouth, Rhode Island

RIDEM
Not Approved for Construction
Drawing Title

Property Map
Plat 68 Lot 73

C-2
Sheet of 2 2

Project Number
72198.20