

BRISTOL WARREN REGIONAL SCHOOL DISTRICT

Mt. HOPE HIGH SCHOOL
199 Chestnut Street
Bristol, Rhode Island 02809

MAP 117 LOT 3

Kindly be advised that this Permit is not equivalent to a verification of the type or extent of freshwater wetlands on site.

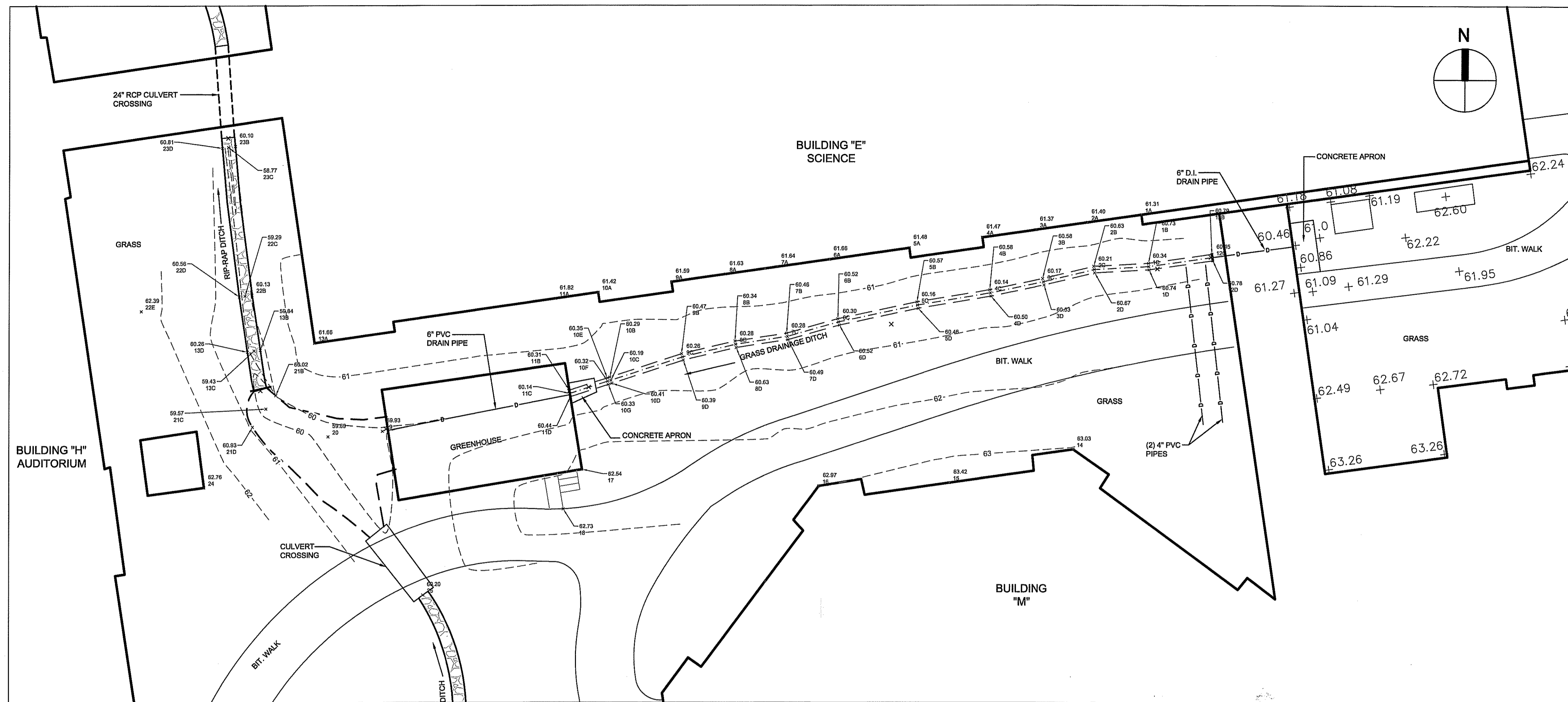
MARK DATE:	REQ. FOR PRELIM. DETERMINATION DESCRIPTION:
08/28/2013	

SCALE:	1"=20'
DRAWN BY:	CJR
CHECK BY:	
PROJ.ARCH./ENGR.	CJR
PROJ. MGR.	DFBR
JOB NO.	10108.02

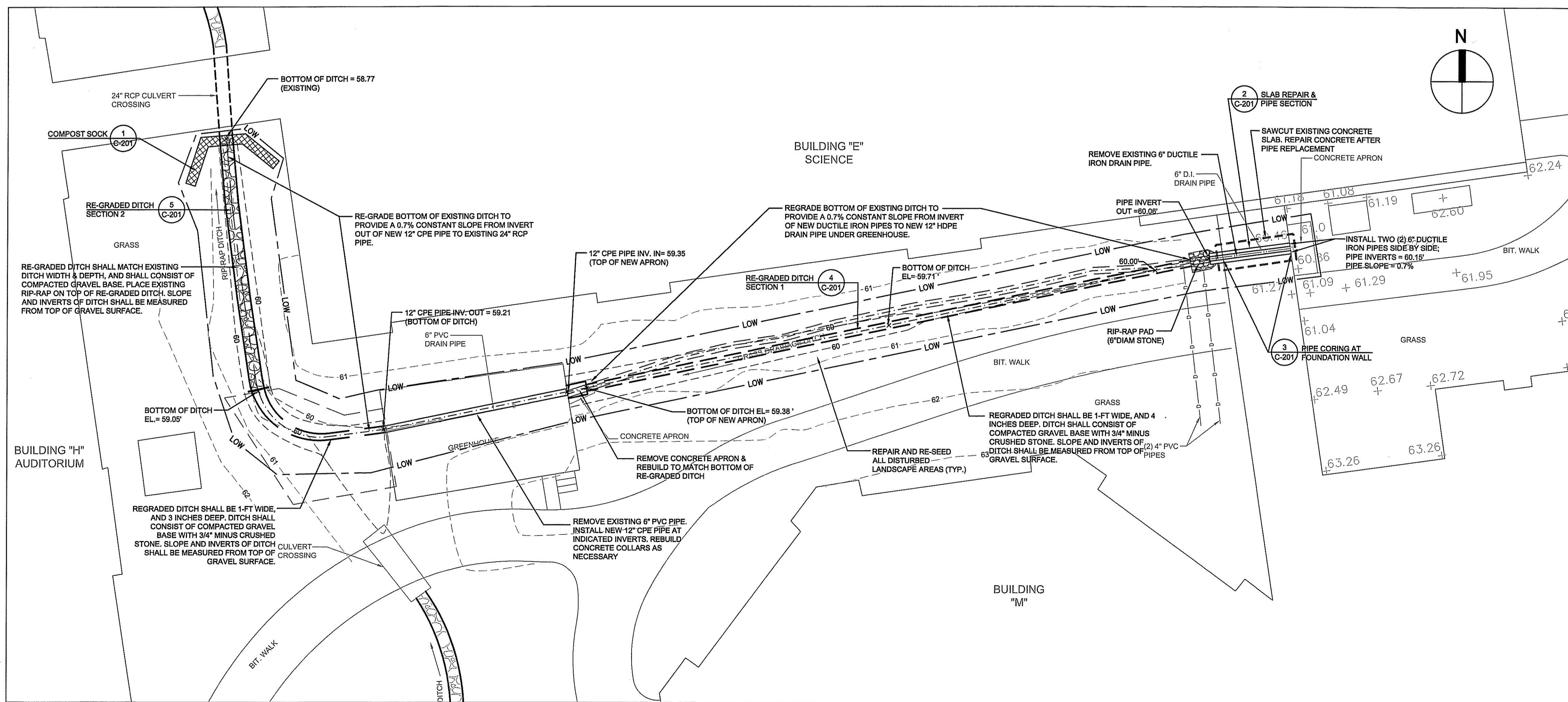
© SYMMES, MAINI & MCKEE ASSOCIATES, INC. 2012

DRAINAGE REPAIR PLAN

DEPARTMENT OF ENVIRONMENTAL MANAGEMENT
OFFICE OF WATER RESOURCES
FRESHWATER WETLANDS PROGRAM
APPROVED WITH CONDITIONS
AS SPECIFIED IN THE LETTER OF APPROVAL
DATED SEP. 17. 2013 FILE # 13-0150
NO CHANGES ALLOWED WITHOUT PRIOR APPROVAL
APPROVED PLANS MUST BE AT CONSTRUCTION SITE



EXISTING CONDITIONS PLAN
SCALE: 1"=20'



DRAINAGE REPAIR PLAN
SCALE: 1"=20'

LEGEND

◄ FES	FLARED END SECTION
○ DMH	DRAIN MANHOLE
■ CB	CATCH BASIN
— D —	DRAIN LINE
x91.00	SPOT GRADE
-98-	CONTOUR
TC	TOP OF CURB
BC	BOTTOM OF CURB
FFE	FINISH FLOOR ELEVATION
RIM	RIM ELEVATION
INV	INVERT ELEVATION
⊠	RIPRAP
PVC	POLYVINYL CHLORIDE PIPE
RCP	REINFORCED CONCRETE PIPE
CPP	CORRUGATED POLYETHYLENE PIPE
CLDIP	CEMENT LINE DUCTILE IRON PIPE
---	LIMIT OF WORK
---	CRUSHED STONE DRAINAGE DITCH
---	FLOW PATH

GENERAL EROSION CONTROL NOTES:

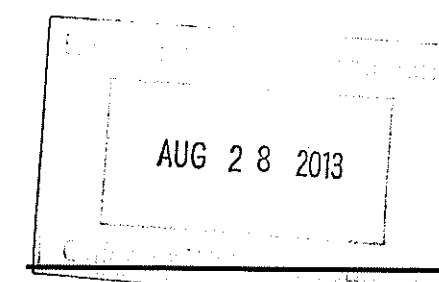
1. EROSION AND SEDIMENTATION CONTROL MEASURES MUST BE IN PLACE AT LEAST 48 HOURS PRIOR TO THE COMMENCEMENT OF ANY SITING OR EARTHWORK OPERATIONS, AND MUST BE MAINTAINED DURING CONSTRUCTION, AND REMAIN IN PLACE UNTIL ALL SITING IS COMPLETE AND GROUND COVER IS ESTABLISHED.
2. STOCKPILES MUST BE SURROUNDED ON THEIR PERIMETERS WITH COMPOST SOCKS AND SILT FENCES TO CONTROL EROSION.
3. STABILIZE STOCK PILES AND EXPOSED SOIL IN AREAS WHERE CONSTRUCTION ACTIVITIES WILL CEASE FOR 21 DAYS.
4. THE CONTRACTOR SHALL INSTALL SILT SACKS AT CATCH BASIN GRATES AND USE COMPOST SOCKS AT CATCH BASINS IN ALL EXPOSED SOIL AREAS UNTIL PERMANENTLY STABILIZED.
5. CULVERT AND PIPE INLETS AND OUTFALLS SHALL BE PROTECTED BY COMPOST SOCKS UNTIL DISTURBED AREAS ARE PERMANENTLY STABILIZED.
6. DEWATERING REQUIRED IN CONSTRUCTING THE DETENTION AREAS OR FOR OTHER FEATURES ON THE SITE SHALL DISCHARGE INTO A TEMPORARY SEDIMENTATION BASIN.
7. SOIL SHALL NOT BE STOCKPILED WITHIN THE 100 FOOT WETLAND BUFFER ZONE. RE-FUELING OF EQUIPMENT IS NOT ALLOWED WITHIN THE 100 FOOT WETLAND BUFFER ZONE. THE STORAGE OF MACHINERY IS NOT ALLOWED WITHIN THE 100 FOOT WETLAND BUFFER ZONE.
8. ALL EROSION CONTROL MEASURES MUST BE ROUTINELY INSPECTED, CLEANED AND REPAIRED OR REPLACED AS NECESSARY THROUGHOUT ALL PHASES OF CONSTRUCTION. IN ADDITION, INSPECTION MUST TAKE PLACE AFTER EACH RAINFALL EVENT.
9. THE CONTRACTOR MUST KEEP ON SITE AT ALL TIMES ADDITIONAL COMPOST SOCKS, EXTRA SILTATION FENCING, EROSION CONTROL BLANKETS, STONE RIP-RAP, AND OTHER EROSION CONTROL DEVICES USED DURING CONSTRUCTION. THESE SHALL BE INSTALLED AS NEEDED AND AT THE DIRECTION OF THE ENGINEER TO MITIGATE ANY EMERGENCY CONDITION. MINIMUM RESERVE OF COMPOST SOCK AND SILT FENCE MUST INCLUDE 50 LF WITH STAKES.
10. TO THE MAXIMUM EXTENT PRACTICABLE, WORK SHALL BE PLANNED TO OCCUR DURING DRY WEATHER TO MINIMIZE RUN-OFF OF SEDIMENT.

EROSION CONTROL MAINTENANCE NOTES:

- DURING THE PERIOD OF CONSTRUCTION AND UNTIL LONG TERM VEGETATION IS ESTABLISHED:
1. THE COMPOST SOCKS AND ANY OTHER EROSION AND SEDIMENT CONTROL MEASURES/DEVICES FOR POTENTIAL STOCKPILES SHALL BE INSPECTED, CLEANED, REPLACED AND/OR REPAIRED WEEKLY AND AFTER EACH SIGNIFICANT RAINFALL.
 2. THE ENTRANCES AND EXITS FROM THE SITE SHALL BE MAINTAINED IN A CONDITION THAT WILL PREVENT TRACKING OR FLOWING OF SEDIMENT INTO THE PUBLIC WAY. ALL SEDIMENT THAT IS TRACKED, SPILLED OR WASHED INTO THE PUBLIC WAY SHALL BE REMOVED BY THE CONTRACTOR IMMEDIATELY.
 3. THE CONTRACTOR MUST CONTACT THE APPROPRIATE UTILITY COMPANY AND "DIG SAFE" AT LEAST 72 HOURS PRIOR TO ANY EXCAVATION WORK TO REQUEST EXACT FIELD LOCATION OF UTILITIES AND THE ENGINEER MUST BE NOTIFIED OF ANY UTILITIES INTERFERING WITH THE PROPOSED CONSTRUCTION.
 4. THE CONTRACTOR SHALL CLEAN ALL STRUCTURES PRIOR TO PROJECT CLOSE-OUT.

UTILITY NOTES:

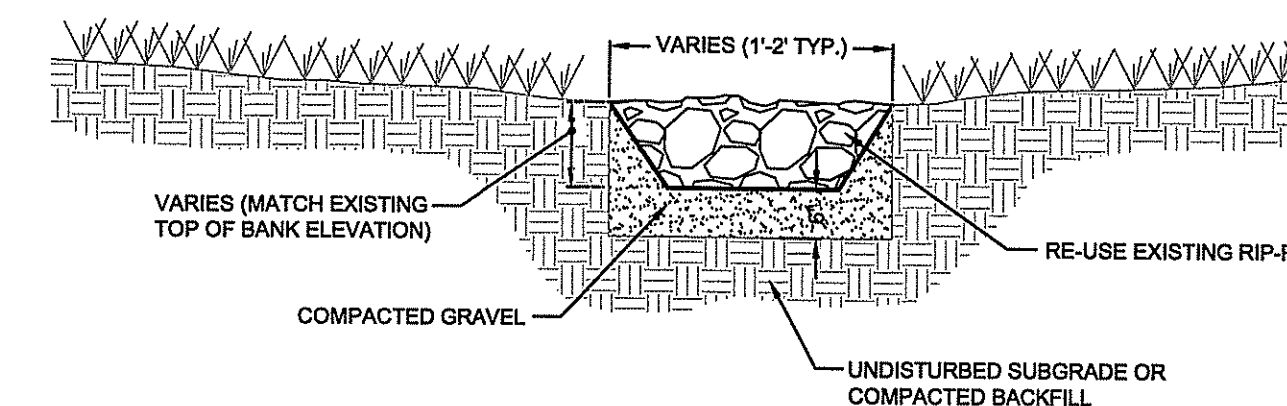
1. PRIOR TO CONSTRUCTION, THE CONTRACTOR MUST VERIFY EXISTING UTILITY LOCATIONS AS SHOWN ON THE DRAWINGS. REPORT DISCREPANCIES TO SYMMES MAINI & MCKEE ASSOCIATES.
2. PROTECT ALL NEW AND EXISTING UTILITIES DURING CONSTRUCTION, UNLESS SPECIFICALLY NOTED TO BE REMOVED.
3. THE CONTRACTOR MUST CONTACT THE APPROPRIATE UTILITY COMPANY AND "DIG SAFE" AT LEAST 72 HOURS PRIOR TO ANY EXCAVATION WORK TO REQUEST EXACT FIELD LOCATION OF UTILITIES AND THE ENGINEER MUST BE NOTIFIED OF ANY UTILITIES INTERFERING WITH THE PROPOSED CONSTRUCTION.
4. THE CONTRACTOR SHALL CLEAN ALL STRUCTURES PRIOR TO PROJECT CLOSE-OUT.



**BRISTOL WARREN
 REGIONAL SCHOOL
 DISTRICT**

**Mt. HOPE
 HIGH SCHOOL**
 199 Chestnut Street
 Bristol, Rhode Island 02809

Kindly be advised that this Permit is not a substitute to a verification of the type or extent of freshwater wetlands on site.



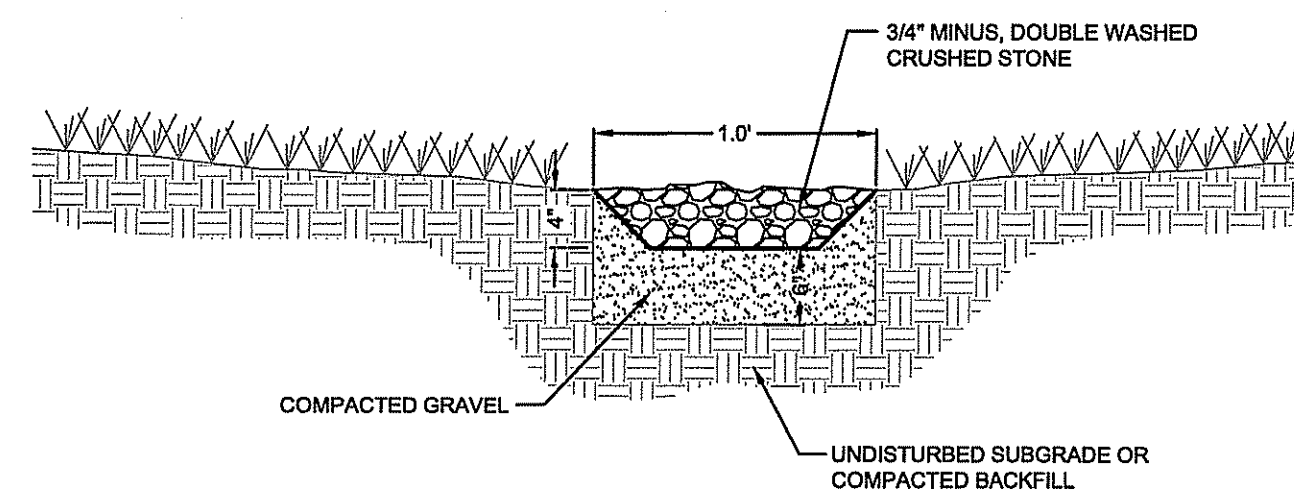
5 TYPICAL DRAINAGE DITCH SECTION 2
 N.T.S.

DEPARTMENT OF ENVIRONMENTAL MANAGEMENT
 OFFICE OF WATER RESOURCES
 FRESHWATER WETLANDS PROGRAM
 APPROVED WITH CONDITIONS
 AS SPECIFIED IN THE LETTER OF APPROVAL
 DATED SEP 17 2013 FILE # 13-0150
 NO CHANGES ALLOWED WITHOUT PRIOR APPROVAL
 APPROVED PLANS MUST BE AT CONSTRUCTION SITE

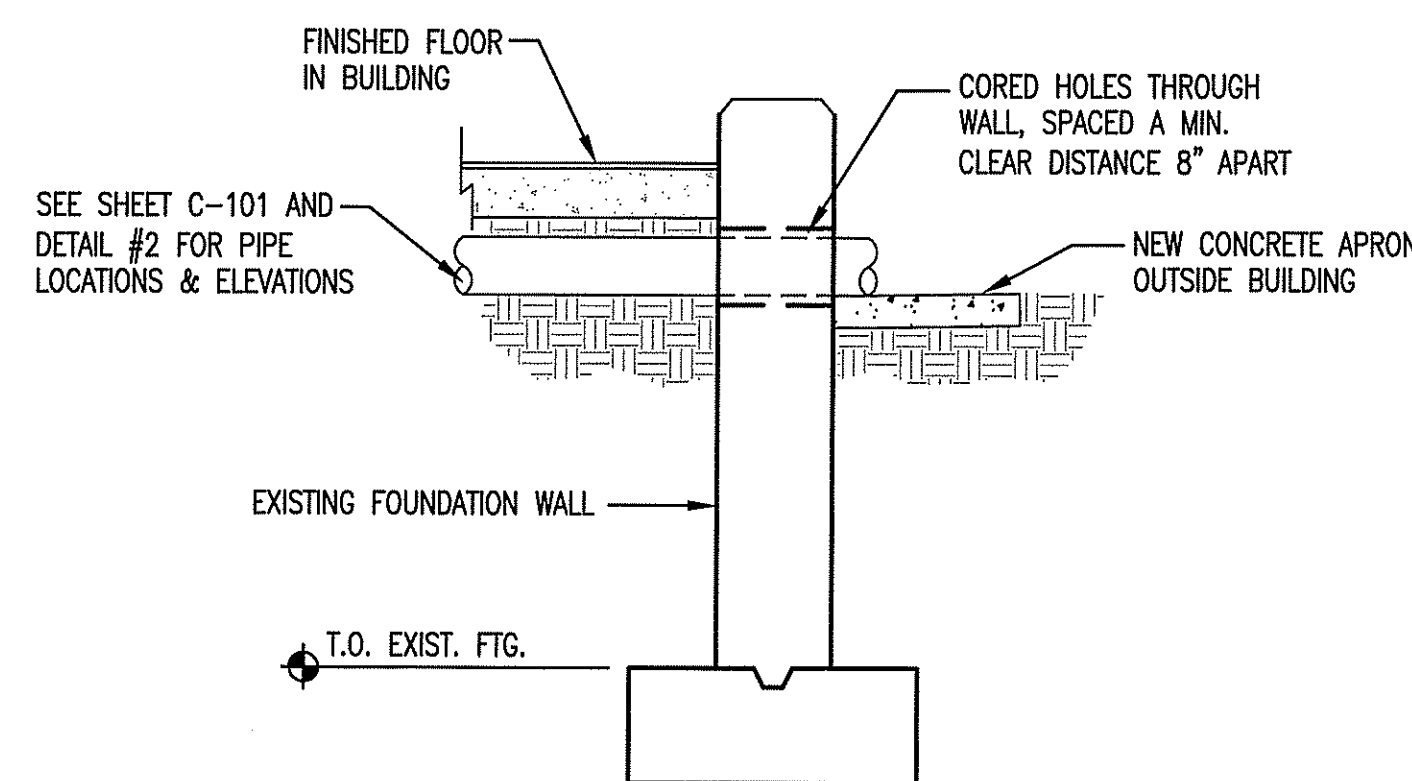
08/28/2013 REQ. FOR PRELIM. DETERMINATION
 MARK DATE: DESCRIPTION:
 ISSUE LOG

SCALE _____ 1"=20'
 DRAWN BY _____ CJR
 CHECK BY _____
 PROJ.ARCH/ENGR. _____ CJR
 PROJ. MGR. _____ DFR
 JOB NO. 10106.02
 © SYMMES, MAINI & MCKEE ASSOCIATES, INC. 2012

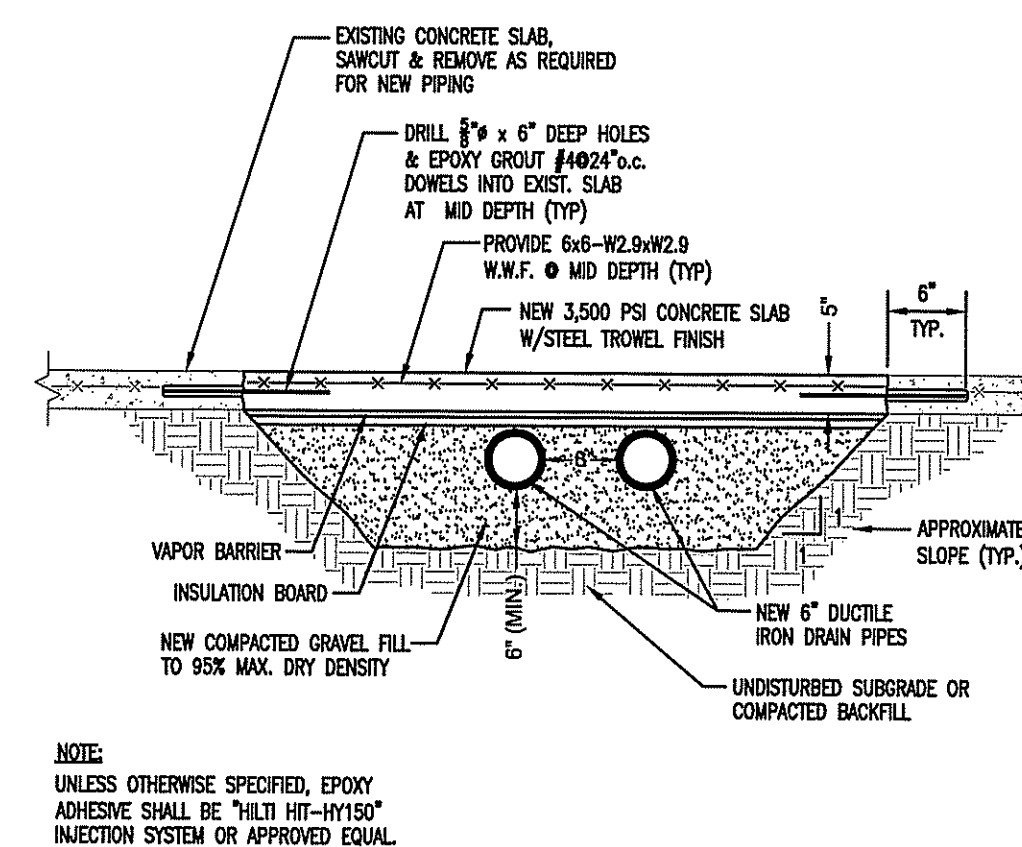
DETAILS



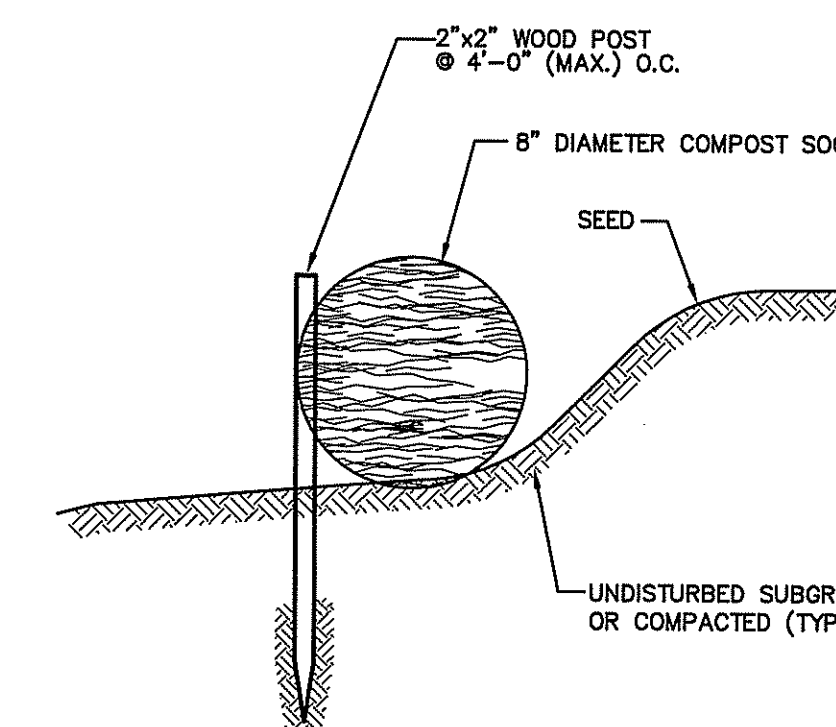
4 TYPICAL DRAINAGE DITCH SECTION 1
 N.T.S.



3 PIPE CORING AT EXISTING FOUNDATION WALL
 N.T.S.



2 SLAB REPAIR AND PIPE SECTION
 N.T.S.



1 COMPOST SOCK
 N.T.S.