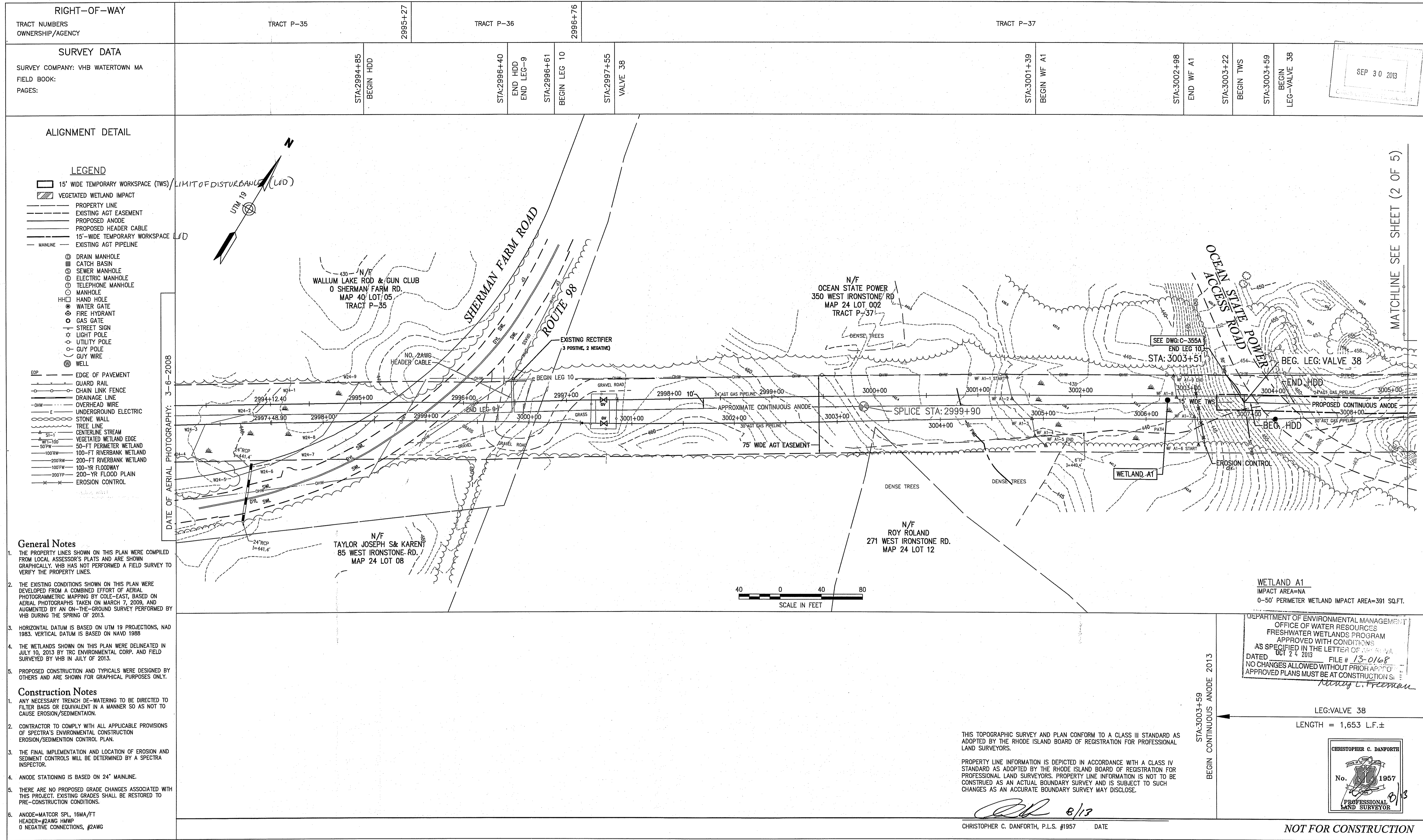




RI DEM 2007

Site Locus
Burrillville, RI

PROVIDENCE COUNTY RHODE ISLAND
TOWN OF BURRILLVILLE



ALIGNMENT DETAIL

LEGEND

- 15' WIDE TEMPORARY WORKSPACE (TWS) / LIMIT OF DISTURBANCE (LID)
- VEGETATED WETLAND IMPACT
- PROPERTY LINE
- EXISTING AGT EASEMENT
- PROPOSED ANODE
- PROPOSED HEADER CABLE
- 15'-WIDE TEMPORARY WORKSPACE LID
- EXISTING AGT PIPELINE
- MANLINE
- DRAIN MANHOLE
- CATCH BASIN
- SEWER MANHOLE
- ELECTRIC MANHOLE
- TELEPHONE MANHOLE
- MANHOLE
- HAND HOLE
- WATER GATE
- FIRE HYDRANT
- GAS GATE
- STREET SIGN
- LIGHT POLE
- UTILITY POLE
- GUY POLE
- GUY WIRE
- WELL
- EDGE OF PAVEMENT
- GUARD RAIL
- CHAIN LINK FENCE
- DRAINAGE LINE
- OVERHEAD WIRE
- UNDERGROUND ELECTRIC
- STONE WALL
- TREE LINE
- CENTERLINE STREAM
- VEGETATED WETLAND EDGE
- 50-FT PERIMETER WETLAND
- 100-FT RIVERBANK WETLAND
- 100-FT FLOODWAY
- 200-YR FLOOD PLAIN
- EROSION CONTROL

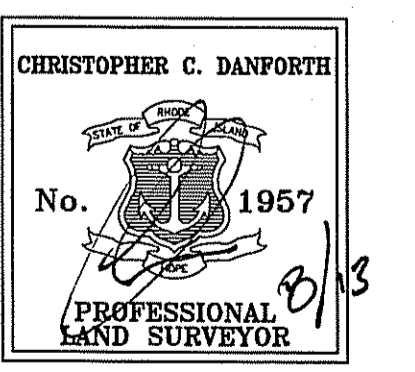
DATE OF AERIAL PHOTOGRAPHY: 3-6-2008

- General Notes**
- THE PROPERTY LINES SHOWN ON THIS PLAN WERE COMPILED FROM LOCAL ASSESSOR'S PLATS AND ARE SHOWN GRAPHICALLY. VHB HAS NOT PERFORMED A FIELD SURVEY TO VERIFY THE PROPERTY LINES.
 - THE EXISTING CONDITIONS SHOWN ON THIS PLAN WERE DEVELOPED FROM A COMBINED EFFORT OF AERIAL PHOTOGRAMMETRIC MAPPING BY COLE-EAST, BASED ON AERIAL PHOTOGRAPHS TAKEN ON MARCH 7, 2009, AND AUGMENTED BY AN ON-THE-GROUND SURVEY PERFORMED BY VHB DURING THE SPRING OF 2013.
 - HORIZONTAL DATUM IS BASED ON UTM 19 PROJECTIONS, NAD 1983. VERTICAL DATUM IS BASED ON NAVD 1988.
 - THE WETLANDS SHOWN ON THIS PLAN WERE DELINEATED IN JULY 10, 2013 BY TRC ENVIRONMENTAL CORP. AND FIELD SURVEYED BY VHB IN JULY OF 2013.
 - PROPOSED CONSTRUCTION AND TYPICALS WERE DESIGNED BY OTHERS AND ARE SHOWN FOR GRAPHICAL PURPOSES ONLY.

- Construction Notes**
- ANY NECESSARY TRENCH DE-WATERING TO BE DIRECTED TO FILTER BAGS OR EQUIVALENT IN A MANNER SO AS NOT TO CAUSE EROSION/SEDIMENTATION.
 - CONTRACTOR TO COMPLY WITH ALL APPLICABLE PROVISIONS OF SPECTRA'S ENVIRONMENTAL CONSTRUCTION EROSION/SEDIMENTATION CONTROL PLAN.
 - THE FINAL IMPLEMENTATION AND LOCATION OF EROSION AND SEDIMENT CONTROLS WILL BE DETERMINED BY A SPECTRA INSPECTOR.
 - ANODE STATIONING IS BASED ON 24" MAINLINE.
 - THERE ARE NO PROPOSED GRADE CHANGES ASSOCIATED WITH THIS PROJECT. EXISTING GRADES SHALL BE RESTORED TO PRE-CONSTRUCTION CONDITIONS.
 - ANODE=MATCOR SPL, 16MA/FT
HEADER=#2AWG HMWP
0 NEGATIVE CONNECTIONS, #2AWG

DEPARTMENT OF ENVIRONMENTAL MANAGEMENT
OFFICE OF WATER RESOURCES
FRESHWATER WETLANDS PROGRAM
APPROVED WITH CONDITIONS
AS SPECIFIED IN THE LETTER OF APPROVAL
DATED 06/24/2013 FILE # 13-0168
NO CHANGES ALLOWED WITHOUT PRIOR APPROVAL
APPROVED PLANS MUST BE AT CONSTRUCTION SITE
Mary L. Freeman

LEG: VALVE 38
LENGTH = 1,653 L.F.±

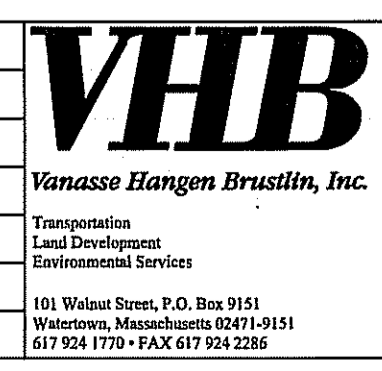


THIS TOPOGRAPHIC SURVEY AND PLAN CONFORM TO A CLASS III STANDARD AS ADOPTED BY THE RHODE ISLAND BOARD OF REGISTRATION FOR PROFESSIONAL LAND SURVEYORS.
PROPERTY LINE INFORMATION IS DEPICTED IN ACCORDANCE WITH A CLASS IV STANDARD AS ADOPTED BY THE RHODE ISLAND BOARD OF REGISTRATION FOR PROFESSIONAL LAND SURVEYORS. PROPERTY LINE INFORMATION IS NOT TO BE CONSTRUED AS AN ACTUAL BOUNDARY SURVEY AND IS SUBJECT TO SUCH CHANGES AS AN ACCURATE BOUNDARY SURVEY MAY DISCLOSE.

CD 8/13
CHRISTOPHER C. DANFORTH, P.L.S. #1957 DATE

NOT FOR CONSTRUCTION

DWG. NO.	REFERENCE DWG.	REV	DSN	CK	DESCRIPTION
C-374A	VALVE 38 LINEAR GROUNDBED 2013				
C-377A	CHESTNUT LINEAR GROUNDBED 2013				
C-376A	GLENDALE LINEAR ANODE 2013				
C-375A	OCEAN STATE POWER LINEAR GROUNDBED 2013				
C-355A	MAINLINE, BURRILLVILLE GROUNDBED 2012				



ENGINEERING APPROVALS					
DRAWN BY:	BID	CONSTRUCTION			
SLT	8/13				
TITLE	SIGNATURE	DATE	SIGNATURE	DATE	

MAINLINE AND L30B VALVE-38 LINEAR ANODE		CATHODIC PROTECTION	
LOC.	BURRILLVILLE RI	YEAR: 2013	MC.400086.051.02
SCALE:	1"=40'	DWG. C-374A	1 OF 5
REV.		ALGONQUIN GAS TRANSMISSION, LLC	5400 Westheimer Court, Houston, TX 77056-5310

PROVIDENCE COUNTY RHODE ISLAND
TOWN OF BURRILLVILLE

RIGHT-OF-WAY	TRACT P-38									
TRACT NUMBERS OWNERSHIP/AGENCY										
SURVEY DATA	STA:3005+79 BEGIN 50' PWB	STA:3006+33 BEGIN WF A2	STA:3006+84 END WF A2	STA:3007+07 END 50' PWB	STA:3008+89 BEGIN 50' PWB	STA:3010+48 END 50' PWB	STA:3010+87 BEGIN 50' PWB	STA:3011+46 BEGIN WF A3	STA:3012+62 END WF A3	STA:3013+21 END 50' PWB

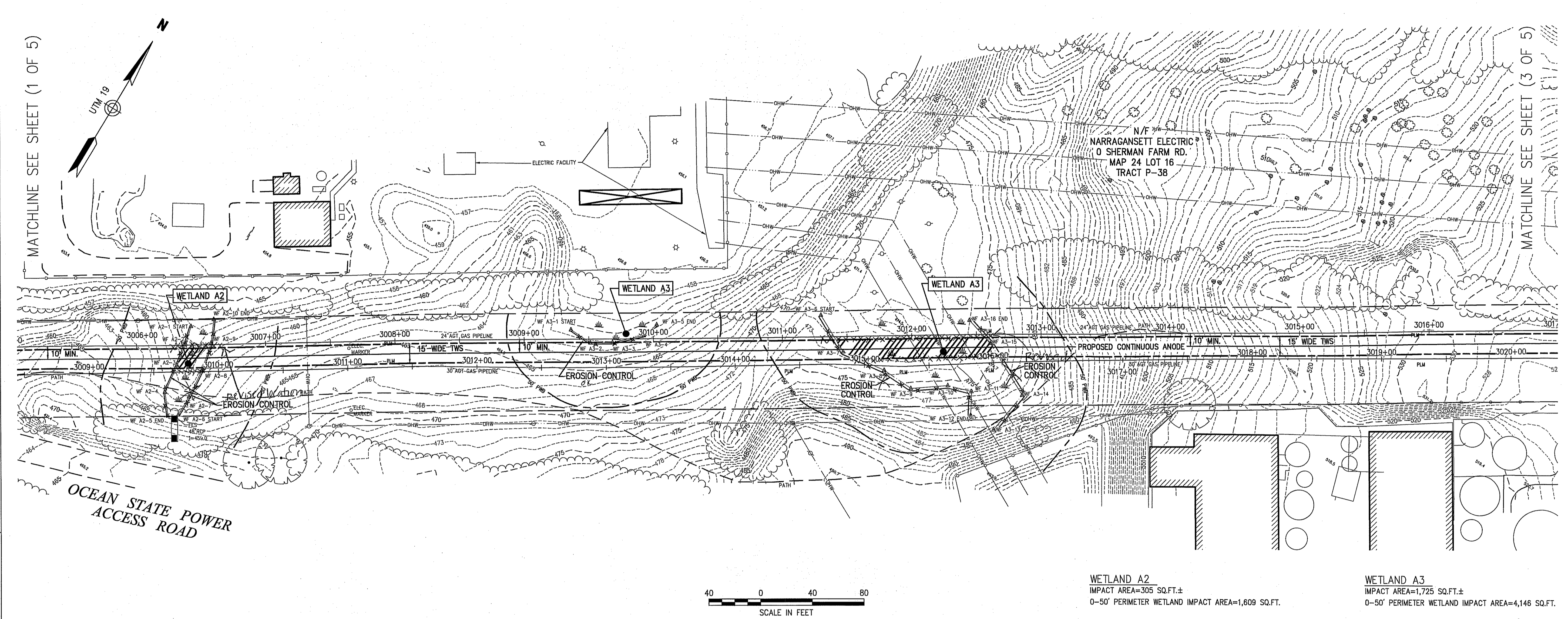
SEP 30 2013

ALIGNMENT DETAIL

LEGEND

- 15' WIDE TEMPORARY WORKSPACE (TWS)
- VEGETATED WETLAND IMPACT
- PROPERTY LINE
- EXISTING AGT EASEMENT
- PROPOSED ANODE
- PROPOSED HEADER CABLE
- 15'-WIDE TEMPORARY WORKSPACE
- MAINLINE
- EXISTING AGT PIPELINE
- DRAIN MANHOLE
- CATCH BASIN
- SEWER MANHOLE
- ELECTRIC MANHOLE
- TELEPHONE MANHOLE
- MANHOLE
- HAND HOLE
- WATER GATE
- FIRE HYDRANT
- GAS GATE
- STREET SIGN
- LIGHT POLE
- UTILITY POLE
- GUY WIRE
- WELL
- EDGE OF PAVEMENT
- GUARD RAIL
- CHAIN LINK FENCE
- DRAINAGE LINE
- UNDERGROUND ELECTRIC
- STONE WALL
- TREE LINE
- CENTERLINE STREAM
- VEGETATED WETLAND EDGE
- 50-FT PERIMETER WETLAND
- 100-FT RIVERBANK WETLAND
- 200-FT RIVERBANK WETLAND
- 100-YR FLOODPLAIN
- 200-YR FLOOD PLAIN
- EROSION CONTROL

DATE OF AERIAL PHOTOGRAPHY: 3-6-2008

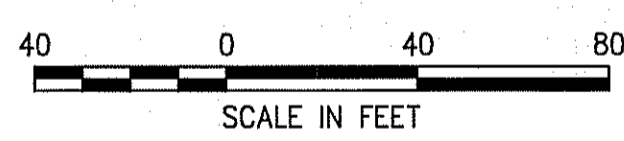


General Notes

- THE PROPERTY LINES SHOWN ON THIS PLAN WERE COMPILED FROM LOCAL ASSESSOR'S PLATS AND ARE SHOWN GRAPHICALLY. VHB HAS NOT PERFORMED A FIELD SURVEY TO VERIFY THE PROPERTY LINES.
- THE EXISTING CONDITIONS SHOWN ON THIS PLAN WERE DEVELOPED FROM A COMBINED EFFORT OF AERIAL PHOTOGRAMMETRIC MAPPING BY COLE-EAST, BASED ON AERIAL PHOTOGRAPHS TAKEN ON MARCH 7, 2009, AND AUGMENTED BY AN ON-THE-GROUND SURVEY PERFORMED BY VHB DURING THE SPRING OF 2013.
- HORIZONTAL DATUM IS BASED ON UTM 19 PROJECTIONS, NAD 1983. VERTICAL DATUM IS BASED ON NAVD 1988
- THE WETLANDS SHOWN ON THIS PLAN WERE DELINEATED IN JULY 10, 2013 BY TRC ENVIRONMENTAL CORP. AND FIELD SURVEYED BY VHB IN JULY OF 2013.
- PROPOSED CONSTRUCTION AND TYPICALS WERE DESIGNED BY OTHERS AND ARE SHOWN FOR GRAPHICAL PURPOSES ONLY.

Construction Notes

- ANY NECESSARY TRENCH DE-WATERING TO BE DIRECTED TO FILTER BAGS OR EQUIVALENT IN A MANNER SO AS NOT TO CAUSE EROSION/SEDIMENTATION.
- CONTRACTOR TO COMPLY WITH ALL APPLICABLE PROVISIONS OF SPECTRA'S ENVIRONMENTAL CONSTRUCTION EROSION/SEDIMENTATION CONTROL PLAN.
- THE FINAL IMPLEMENTATION AND LOCATION OF EROSION AND SEDIMENT CONTROLS WILL BE DETERMINED BY A SPECTRA INSPECTOR.
- ANODE STATIONING IS BASED ON 24" MAINLINE.
- THERE ARE NO PROPOSED GRADE CHANGES ASSOCIATED WITH THIS PROJECT. EXISTING GRADES SHALL BE RESTORED TO PRE-CONSTRUCTION CONDITIONS.
- ANODE=MATCOR SPL, 16MA/FT
HEADER=#2AWG HMWP
0 NEGATIVE CONNECTIONS, #2AWG



WETLAND A2
IMPACT AREA=305 SQ.FT.±
0-50' PERIMETER WETLAND IMPACT AREA=1,609 SQ.FT.

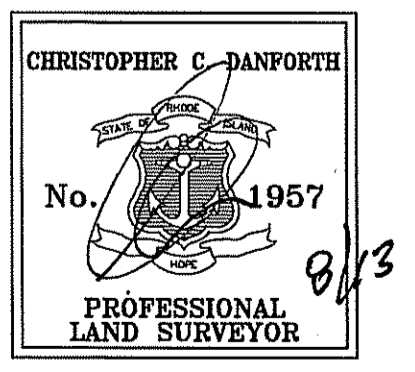
WETLAND A3
IMPACT AREA=1,725 SQ.FT.±
0-50' PERIMETER WETLAND IMPACT AREA=4,146 SQ.FT.

DEPARTMENT OF ENVIRONMENTAL MANAGEMENT
OFFICE OF WATER RESOURCES
FRESHWATER WETLANDS PROGRAM
APPROVED WITH CONDITIONS
AS SPECIFIED IN THE LETTER OF APPROVAL
DATED 8/13/13 FILE # 13-0168
NO CHANGES ALLOWED WITHOUT PRIOR APPROVAL
APPROVED PLANS MUST BE AT CONSTRUCTION SITE
Nancy L. Freeman

LEG VALVE-38
LENGTH = 1,653 L.F.±

THIS TOPOGRAPHIC SURVEY AND PLAN CONFORM TO A CLASS III STANDARD AS ADOPTED BY THE RHODE ISLAND BOARD OF REGISTRATION FOR PROFESSIONAL LAND SURVEYORS.

PROPERTY LINE INFORMATION IS DEPICTED IN ACCORDANCE WITH A CLASS IV STANDARD AS ADOPTED BY THE RHODE ISLAND BOARD OF REGISTRATION FOR PROFESSIONAL LAND SURVEYORS. PROPERTY LINE INFORMATION IS NOT TO BE CONSTRUED AS AN ACTUAL BOUNDARY SURVEY AND IS SUBJECT TO SUCH CHANGES AS AN ACCURATE BOUNDARY SURVEY MAY DISCLOSE.



CC 8/13
CHRISTOPHER C. DANFORTH, P.L.S. #1957 DATE

NOT FOR CONSTRUCTION

DWG. NO.	REFERENCE DWG.	REV	DSN	CK	DESCRIPTION
C-377A	CHESTNUT LINEAR GROUNDBED 2013	△			
C-376A	GLENDALE LINEAR ANODE 2013	△			
C-375A	OCEAN STATE POWER LINEAR GROUNDBED 2013	△			
C-355A	MAINLINE, BURRILLVILLE GROUNDBED 2012	△			

VHB
Vernice Hargen Brustlin, Inc.
Transportation
Land Development
Environmental Services
101 Walnut Street, P.O. Box 9151
Watertown, Massachusetts 02471-9151
617.924.1778 • FAX 617.924.2265

ENGINEERING APPROVALS				
DRAWN BY:	BID	CONSTRUCTION		
SLT		8/13		
REV.				
TITLE	SIGNATURE	DATE	SIGNATURE	DATE

**MAINLINE AND L30B
VALVE-38 LINEAR ANODE**
CATHODIC PROTECTION
LOC. BURRILLVILLE RI
YEAR: 2013 MC.400086.051.02 SCALE: 1"=40' DWG. C-374A 2 OF 5 REV.

Spectra Energy
Algonquin Gas Transmission, LLC
5400 Westheimer Court, Houston, TX 77056-5310

**PROVIDENCE COUNTY RHODE ISLAND
TOWN OF BURRILLVILLE**

RIGHT-OF-WAY TRACT NUMBERS OWNERSHIP/AGENCY	TRACT P-38	3022+20	3023+44	TRACT W-1
SURVEY DATA SURVEY COMPANY: VHB WATERTOWN MA FIELD BOOK: PAGES:	VALVE 38A STA:3020+32	STA:3022+20	STATE	STA:3024+04 TENN GAS STA:3024+20 BEG. 100' BZ STA:3024+79 BEG. HDD STA:3024+86 END TWS

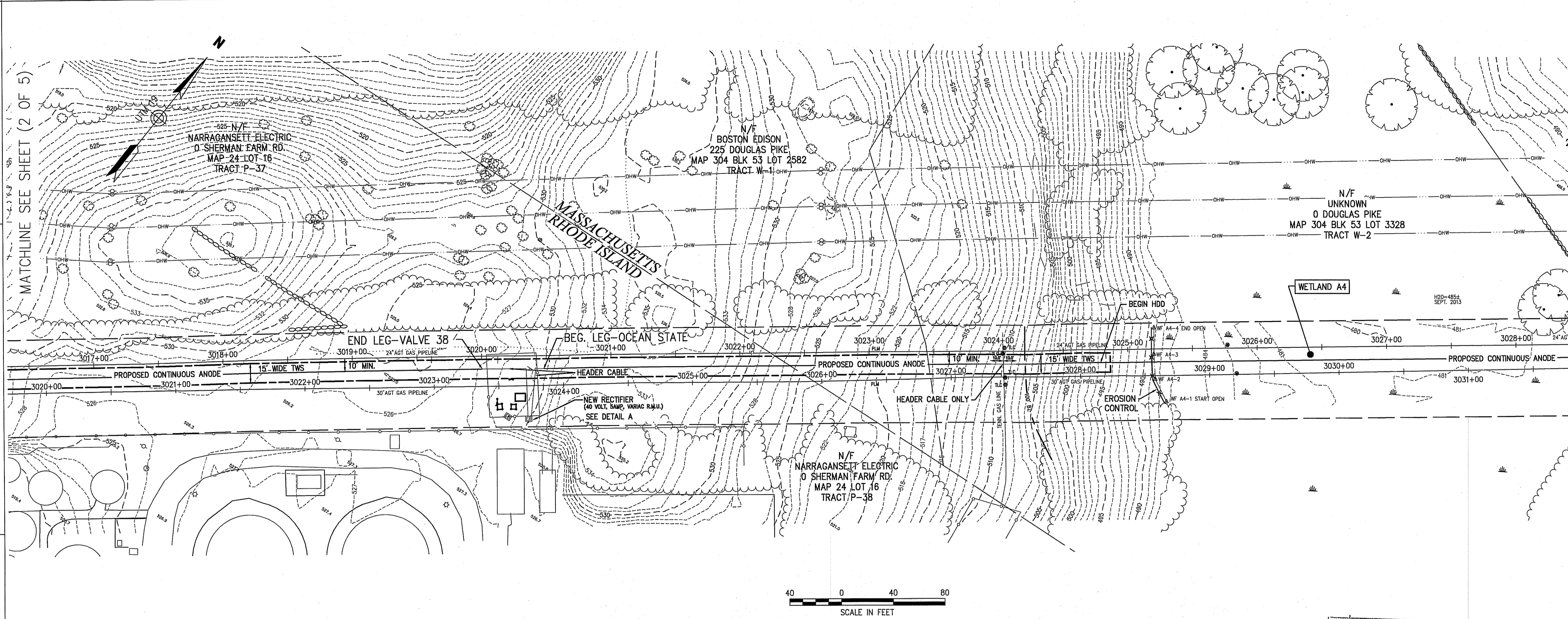
SEP 30 2013

ALIGNMENT DETAIL

LEGEND

- 15' WIDE TEMPORARY WORKSPACE (TWS)
- VEGETATED WETLAND IMPACT
- PROPERTY LINE
- EXISTING AGT EASEMENT
- PROPOSED ANODE
- PROPOSED HEADER CABLE
- 15'-WIDE TEMPORARY WORKSPACE
- MAINLINE
- EXISTING AGT PIPELINE
- DRAIN MANHOLE
- CATCH BASIN
- SEWER MANHOLE
- ELECTRIC MANHOLE
- TELEPHONE MANHOLE
- MANHOLE
- HAND HOLE
- WATER GATE
- FIRE HYDRANT
- GAS GATE
- STREET SIGN
- LIGHT POLE
- UTILITY POLE
- GUY POLE
- GUY WIRE
- WELL
- EDGE OF PAVEMENT
- GUARD RAIL
- CHAIN LINK FENCE
- DRAINAGE LINE
- OVERHEAD WIRE
- UNDERGROUND ELECTRIC
- STONE WALL
- TREE LINE
- CENTERLINE STREAM
- VEGETATED WETLAND EDGE
- 50-FT PERIMETER WETLAND
- 100-FT RIVERBANK WETLAND
- 200-FT RIVERBANK WETLAND
- 100-FT FLOODWAY
- 200-YR FLOOD PLAIN
- EROSION CONTROL

DATE OF AERIAL PHOTOGRAPHY: 3-6-2008



General Notes

- THE PROPERTY LINES SHOWN ON THIS PLAN WERE COMPILED FROM LOCAL ASSESSOR'S PLATS AND ARE SHOWN GRAPHICALLY. VHB HAS NOT PERFORMED A FIELD SURVEY TO VERIFY THE PROPERTY LINES.
- THE EXISTING CONDITIONS SHOWN ON THIS PLAN WERE DEVELOPED FROM A COMBINED EFFORT OF AERIAL PHOTOGRAMMETRIC MAPPING BY COLE-EAST, BASED ON AERIAL PHOTOGRAPHS TAKEN ON MARCH 7, 2009, AND AUGMENTED BY AN ON-THE-GROUND SURVEY PERFORMED BY VHB DURING THE SPRING OF 2013.
- HORIZONTAL DATUM IS BASED ON UTM PROJECTIONS, NAD 1983. VERTICAL DATUM IS BASED ON NAVD 1988.
- THE WETLANDS SHOWN ON THIS PLAN WERE DELINEATED IN JULY 10, 2013 BY TRC ENVIRONMENTAL CORP. AND FIELD SURVEYED BY VHB IN JULY OF 2013.
- PROPOSED CONSTRUCTION AND TYPICALS WERE DESIGNED BY OTHERS AND ARE SHOWN FOR GRAPHICAL PURPOSES ONLY.

Construction Notes

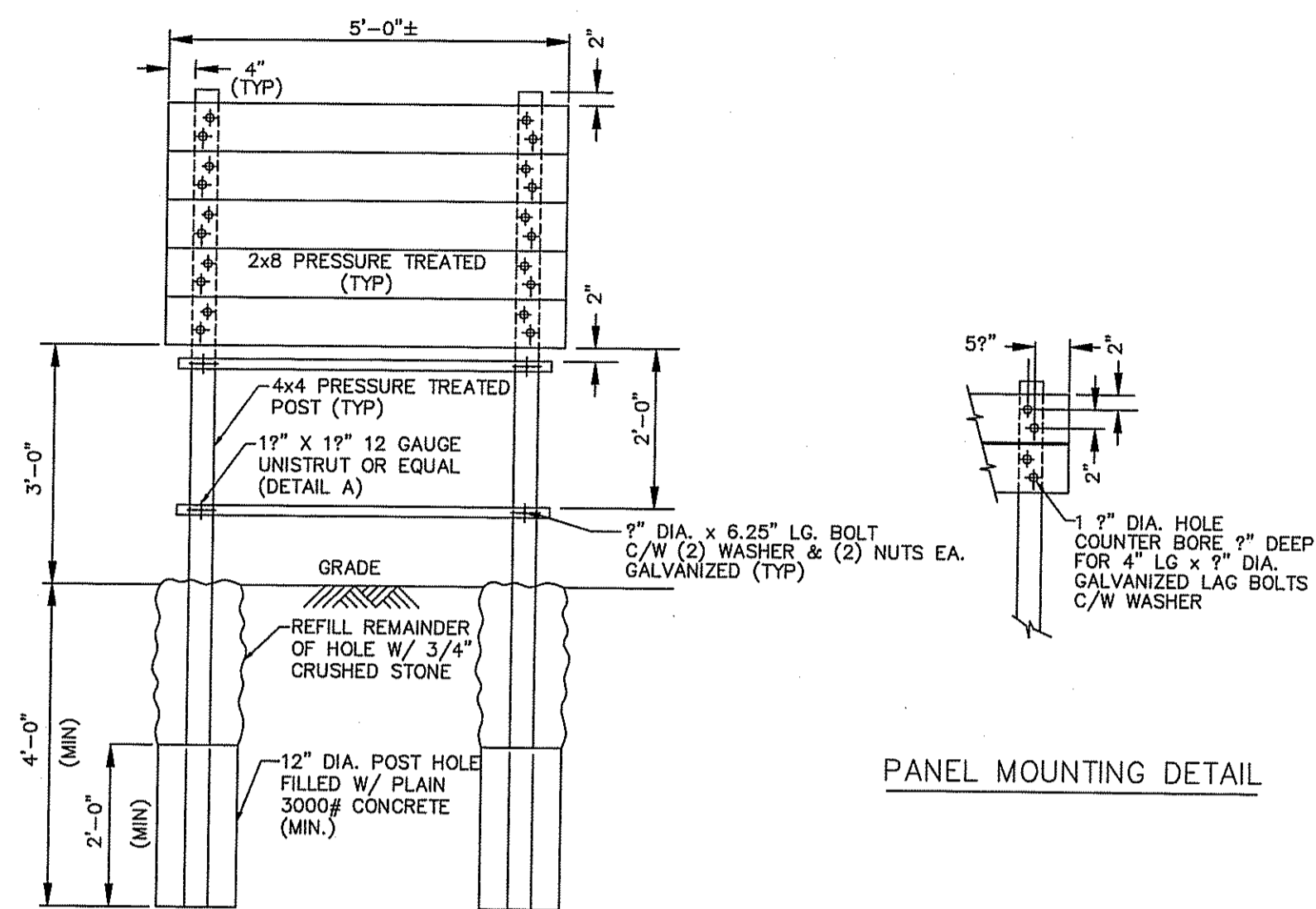
- ANY NECESSARY TRENCH DE-WATERING TO BE DIRECTED TO FILTER BAGS OR EQUIVALENT IN A MANNER SO AS NOT TO CAUSE EROSION/SEDIMENTATION.
- CONTRACTOR TO COMPLY WITH ALL APPLICABLE PROVISIONS OF SPECTRA'S ENVIRONMENTAL CONSTRUCTION EROSION/SEDIMENTATION CONTROL PLAN.
- THE FINAL IMPLEMENTATION AND LOCATION OF EROSION AND SEDIMENT CONTROLS WILL BE DETERMINED BY A SPECTRA INSPECTOR.
- ANODE STATIONING IS BASED ON 24' MAINLINE.
- THERE ARE NO PROPOSED GRADE CHANGES ASSOCIATED WITH THIS PROJECT. EXISTING GRADES SHALL BE RESTORED TO PRE-CONSTRUCTION CONDITIONS.
- ANODE=MATOR SPL 16MA/FT
HEADER=#2AWG HWWP
0 NEGATIVE CONNECTIONS, #2AWG

LEG-VALVE 38 LENGTH=1,653 L.F.±	END LEG-VALVE 38 STA:3020+38	BEGIN LEG-OCEAN STATE STA:3020+49	BEGIN HDD STA:3024+78	LEG-OCEAN STATE POWER LENGTH=2,630 L.F.± HDD LENGTH=616 L.F.±
<p>DEPARTMENT OF ENVIRONMENTAL MANAGEMENT OFFICE OF WATER RESOURCES FRESHWATER WETLANDS APPROVED WITH CONDITIONS AS SPECIFIED IN THE LETTER DATED 08/24/2013 FILE # 13-0168 NO CHANGES ALLOWED WITHOUT PRIOR APPROVAL APPROVED PLANS MUST BE AT CONSTRUCTION SITE <i>Kristy L. Freeman</i></p>				
<p>THIS TOPOGRAPHIC SURVEY AND PLAN CONFORM TO A CLASS III STANDARD AS ADOPTED BY THE RHODE ISLAND BOARD OF REGISTRATION FOR PROFESSIONAL LAND SURVEYORS. PROPERTY LINE INFORMATION IS DEPICTED IN ACCORDANCE WITH A CLASS IV STANDARD AS ADOPTED BY THE RHODE ISLAND BOARD OF REGISTRATION FOR PROFESSIONAL LAND SURVEYORS. PROPERTY LINE INFORMATION IS NOT TO BE CONSTRUED AS AN ACTUAL BOUNDARY SURVEY AND IS SUBJECT TO SUCH CHANGES AS AN ACCURATE BOUNDARY SURVEY MAY DISCLOSE.</p>				
<p align="right">CHRISTOPHER C. DANFORTH, P.L.S. #1957 DATE <i>8/13</i> NOT FOR CONSTRUCTION</p>				

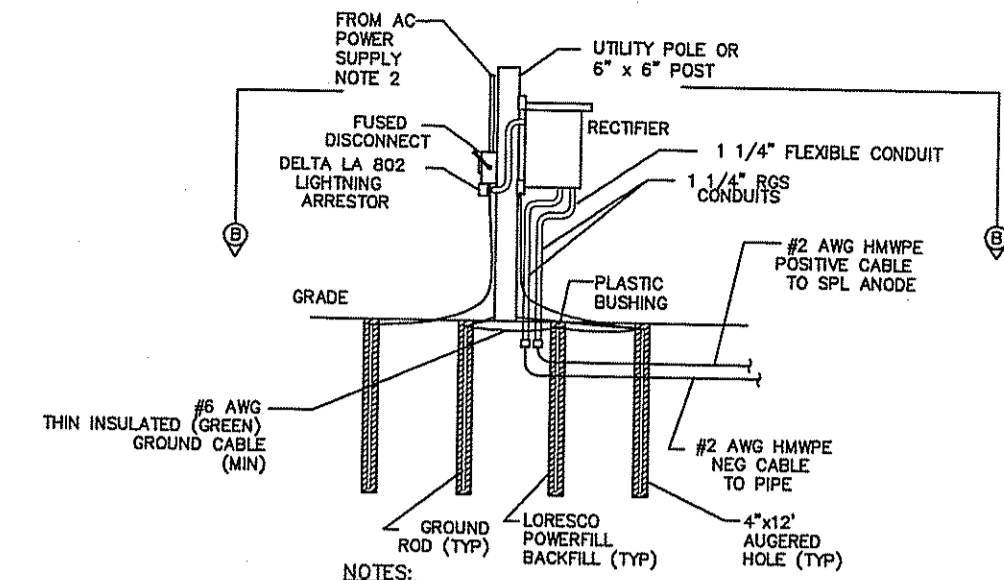
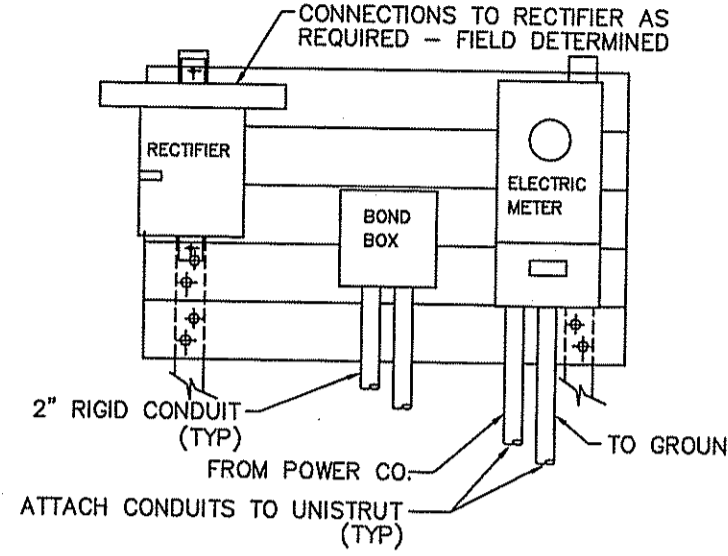
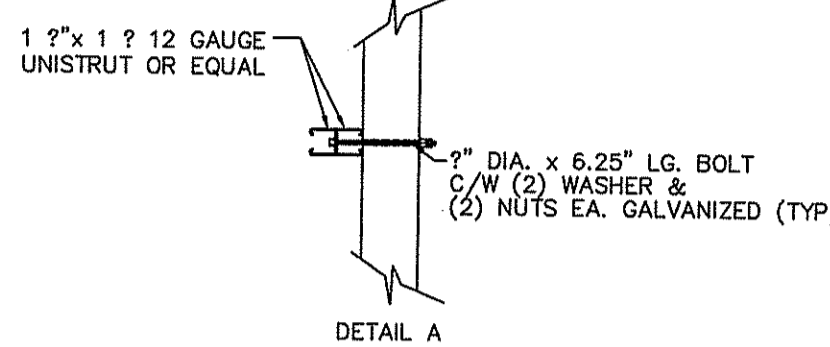
DWG. NO.	REFERENCE DWG.	REV	DSN	CK	DESCRIPTION
C-377A	CHESTNUT LINEAR GROUNDBED 2013	△			
C-376A	GLENDALE LINEAR ANODE 2013	△			
C-375A	OCEAN STATE POWER LINEAR GROUNDBED 2013	△			
C-355A	MAINLINE, BURRILLVILLE GROUNDBED 2012	△			

 VHB Yanasse Hangan Brustlin, Inc. 101 Wilbur Street, P.O. Box 9151 Watertown, Massachusetts 02471-0151 617 524 1770 - FAX 617 924 2286	ENGINEERING APPROVALS				MAINLINE AND L30B VALVE-38 LINEAR ANODE CATHODIC PROTECTION LOC. BURRILLVILLE RI YEAR: 2013 MC.400086.051.02 SCALE: 1"=40' DWG. C-374A 3 OF 5 REV.	 Algonquin Gas Transmission, LLC 5400 Westheimer Court, Houston, TX 77056-5310
	DRAWN BY: SLT BID: 8/13 CONSTRUCTION:	TITLE:	SIGNATURE:	DATE:		

SEP 30 2013

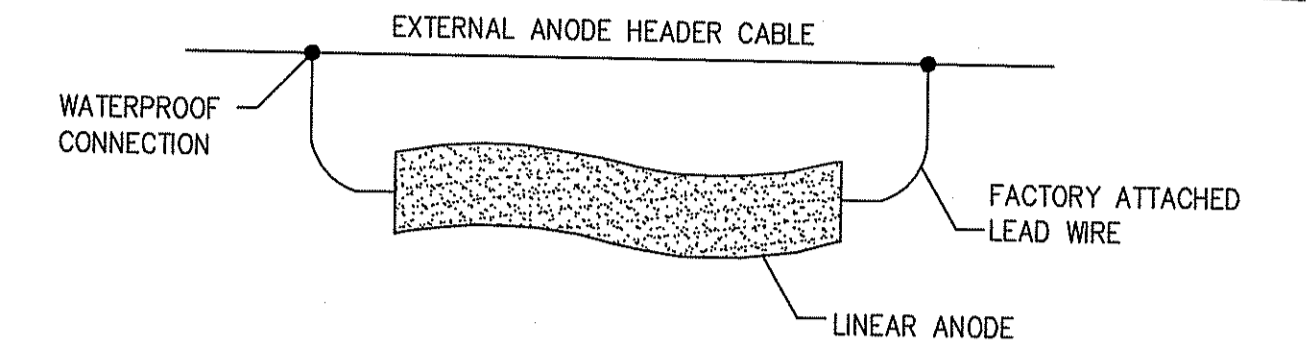
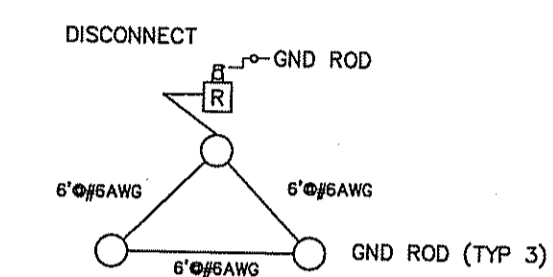


PANEL MOUNTING DETAIL



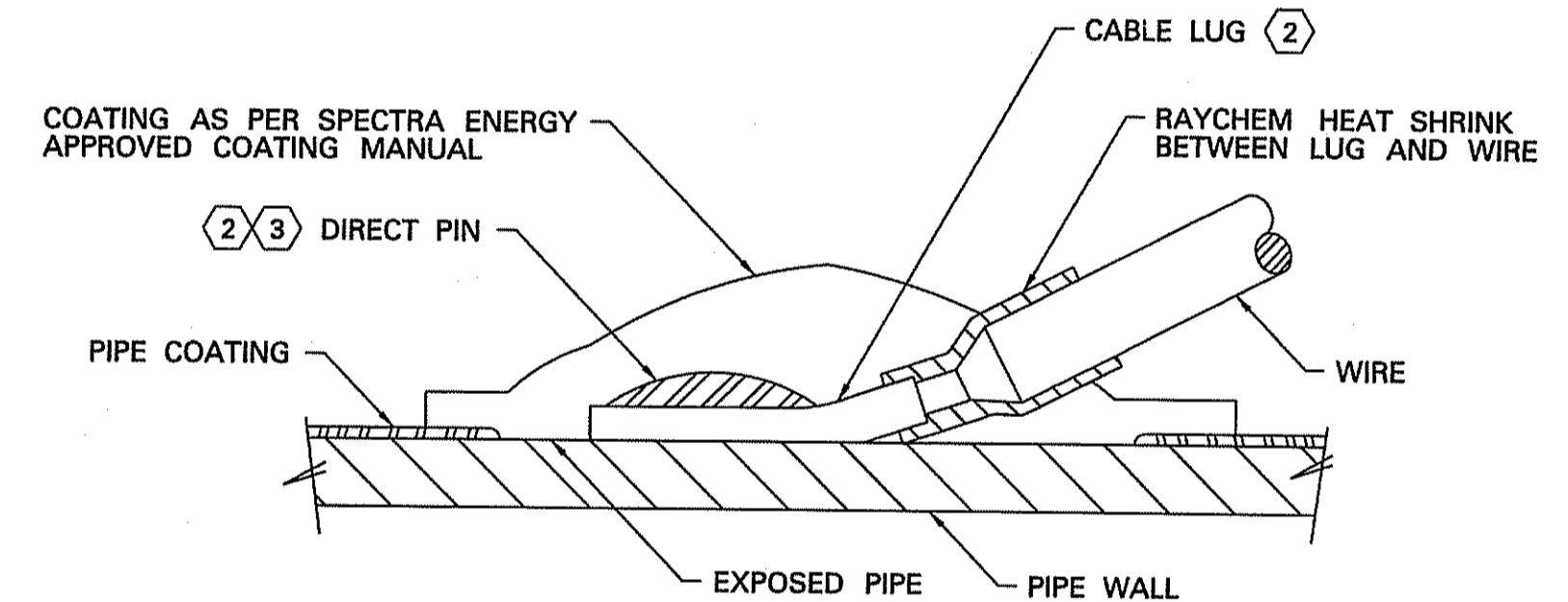
DETAIL "A"
TYPICAL RECTIFIER INSTALLATION WITH GROUNDING

SECTION B-B



TYPICAL LINEAR ANODE
SCALE: N.T.S.
EXTERNAL HEADER CABLE
TYPICAL INSTALLATION

ITEM NO.	NO. REQ'D	DESCRIPTION
1	1	CABLE LUG
2	1	BRAZING PIN
3	1	FERRULE

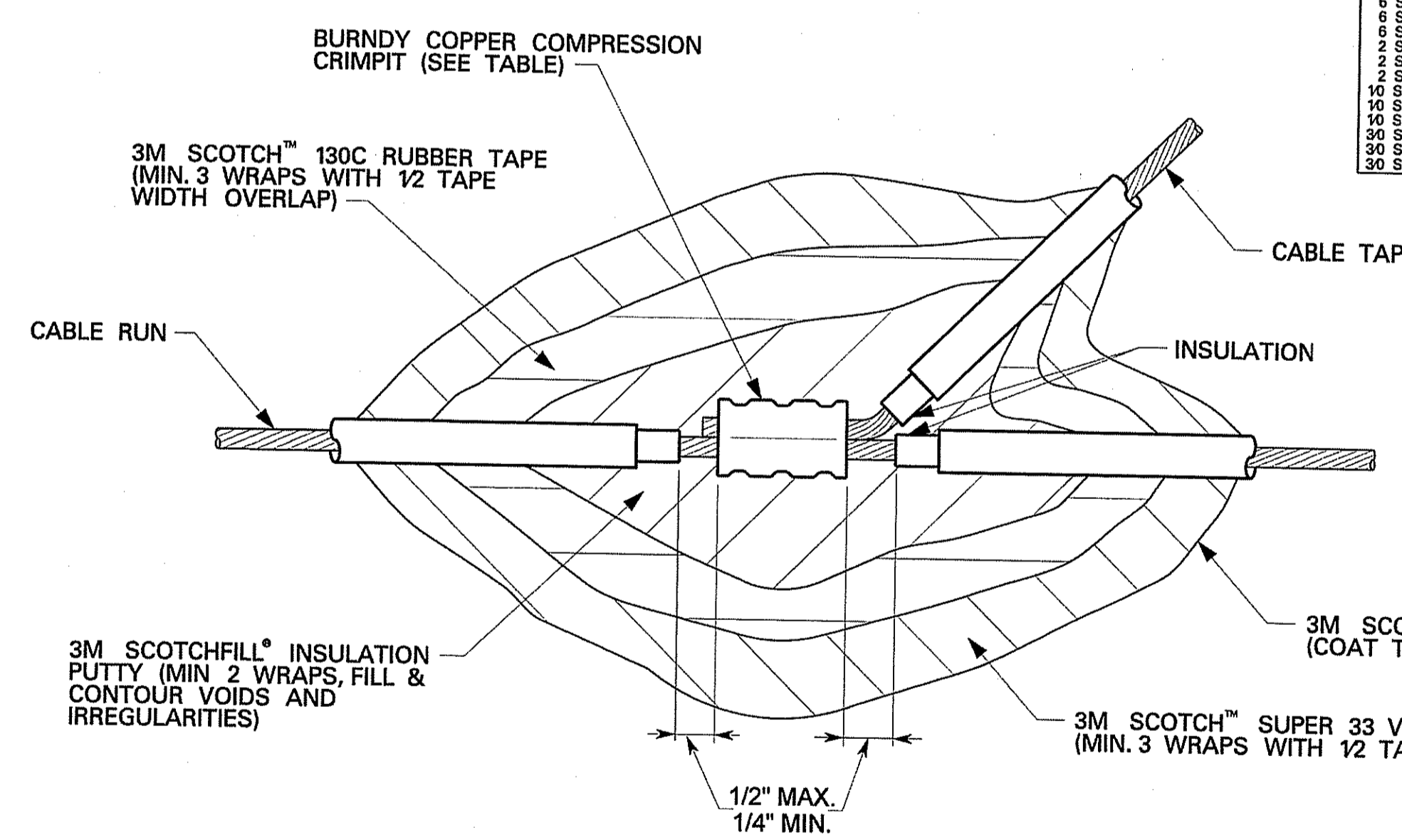


PIN BRAZE CONNECTION
PIN BRAZE CONNECTION OF CATHODIC PROTECTION WIRES TO PIPE

- NOTES:
- ONCE COMPLETE PIN BRAZE CONNECTION CONSISTS OF ONE HEAT SHRINK ALONG WITH ONE TERMINAL SLEEVE/STINGER CONNECTION, CABLE LUG, BRAZING PIN, AND FERRULE FOR THE PIN BRAZING UNIT BEING USED.
 - SAFETRACK IS DISTRIBUTED BY CORRPRO COMPANIES AND BAC (EASY BOND) IS DISTRIBUTED BY GALVOTEC.

WIRE SIZE	RAYCHEM HEAT SHRINK	SAFETRACK UNIT				BAC (EASY BOND) UNIT			
		TERMINAL SLEEVE	CABLE LUG	BRAZING PIN	FERRULE	STINGER CONNECTION	CABLE LUG	BRAZING PIN	FERRULE
#12 AWG	WCSM-134-150-S	6701	6056	10051	2003	278-100-8010	N/A	278-190-3250	270-065-7230
#10 AWG	WCSM-134-150-S	6702	6056	10051	2003	278-100-8040	N/A	278-190-3250	270-065-7230
#8 AWG	WCSM-134-150-S	N/A	6056	10051	2003	N/A	278-100-9830	278-190-3250	270-065-7230
#6 AWG	WCSM-206-150-S	N/A	6057	10051	2003	N/A	278-100-9830	278-190-3250	270-065-7230
#4 AWG	WCSM-206-150-S	N/A	6080	10301	2003	N/A	278-100-9000	278-190-3250	270-065-7230
#2 AWG	WCSM-206-150-S	N/A	6081	10301	2003	N/A	270-088-7800	270-083-3520	270-065-7230
#1 AWG	WCSM-338-150-S	N/A	6079	10301	2003	N/A	278-100-7810	270-083-3520	270-065-7230

PIN BRAZE CONNECTION	DESIGN MANAGER	AKL	03-01-10	STANDARDS
	INITIALS	DATE	DWG.	SF-9005 REV. 1



DEPARTMENT OF ENVIRONMENTAL MANAGEMENT
OFFICE OF WATER RESOURCES
FRESHWATER WETLANDS
APPROVED WITH COMMENTS
AS SPECIFIED IN THE LETTER
DATED OCT 24 2013 FILE # 13-0168
NO CHANGES ALLOWED WITHOUT APPROVAL
APPROVED PLANS MUST BE AT CONSTRUCTION SITE
Nancy L. Freeman

- GENERAL NOTES
- REMOVE SUFFICIENT INSULATION FROM END CABLE TAP.
 - REMOVE INSULATION FROM CABLE RUN. DO NOT CUT CABLE.
 - INSTALL CRIMP WITH SPECIFIED CRIMPER.

No.	REVISION	DATE	DESIGN MANAGER	RWG	09-07-11	STANDARDS
			INITIALS	DATE	DWG.	SF-9028 REV.

DWG. NO.	REFERENCE DWG.	REV	DSN	CK	DESCRIPTION	ENGINEERING APPROVALS					MAINLINE AND L30B VALVE -38 LINEAR ANODE CATHODIC PROTECTION		NOT FOR CONSTRUCTION	
						YEAR: 2013	W.O. 400086051.02	SCALE: 1"=40'	DWG. C-374A	4 OF 5	REV.			

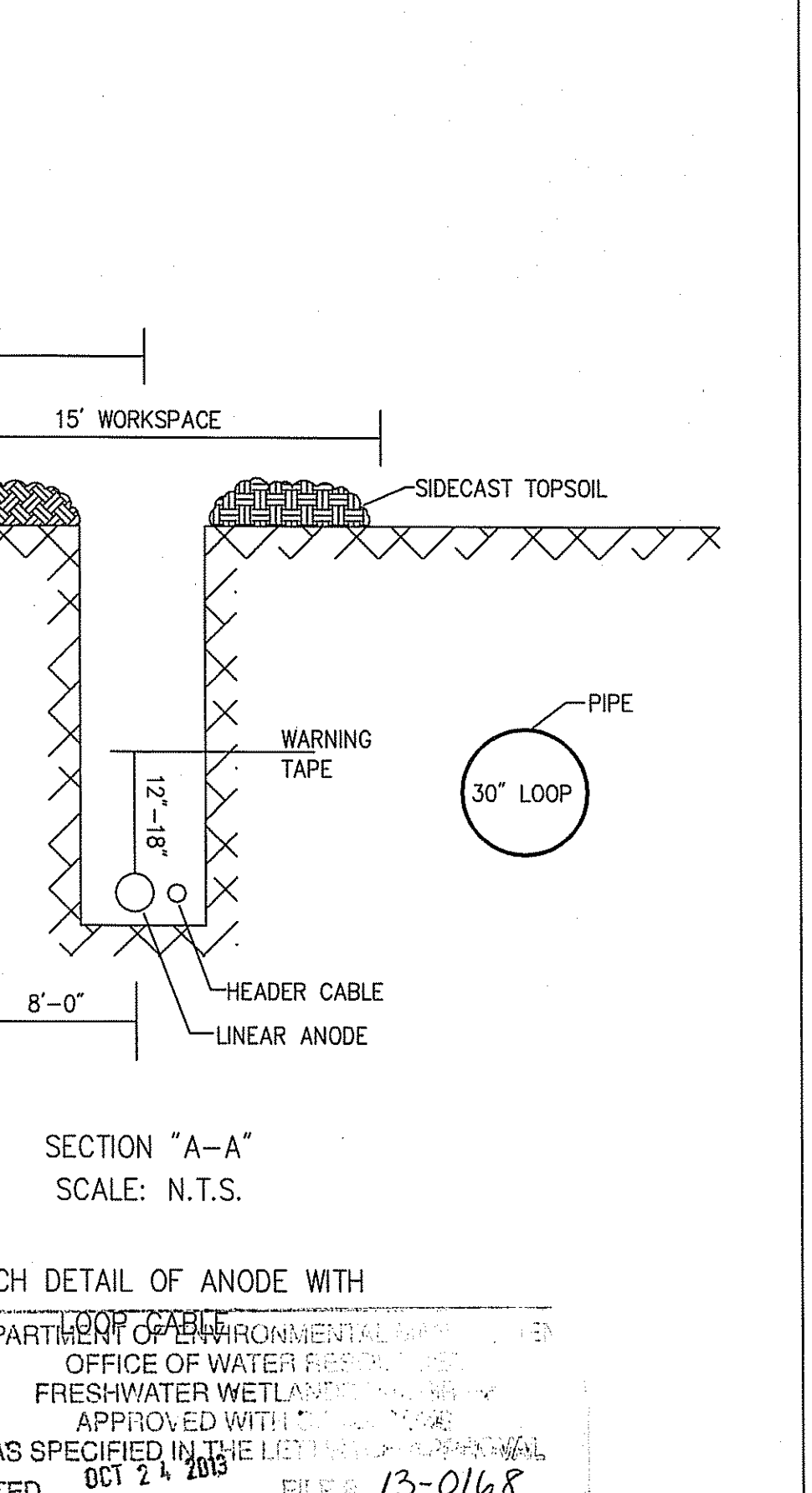
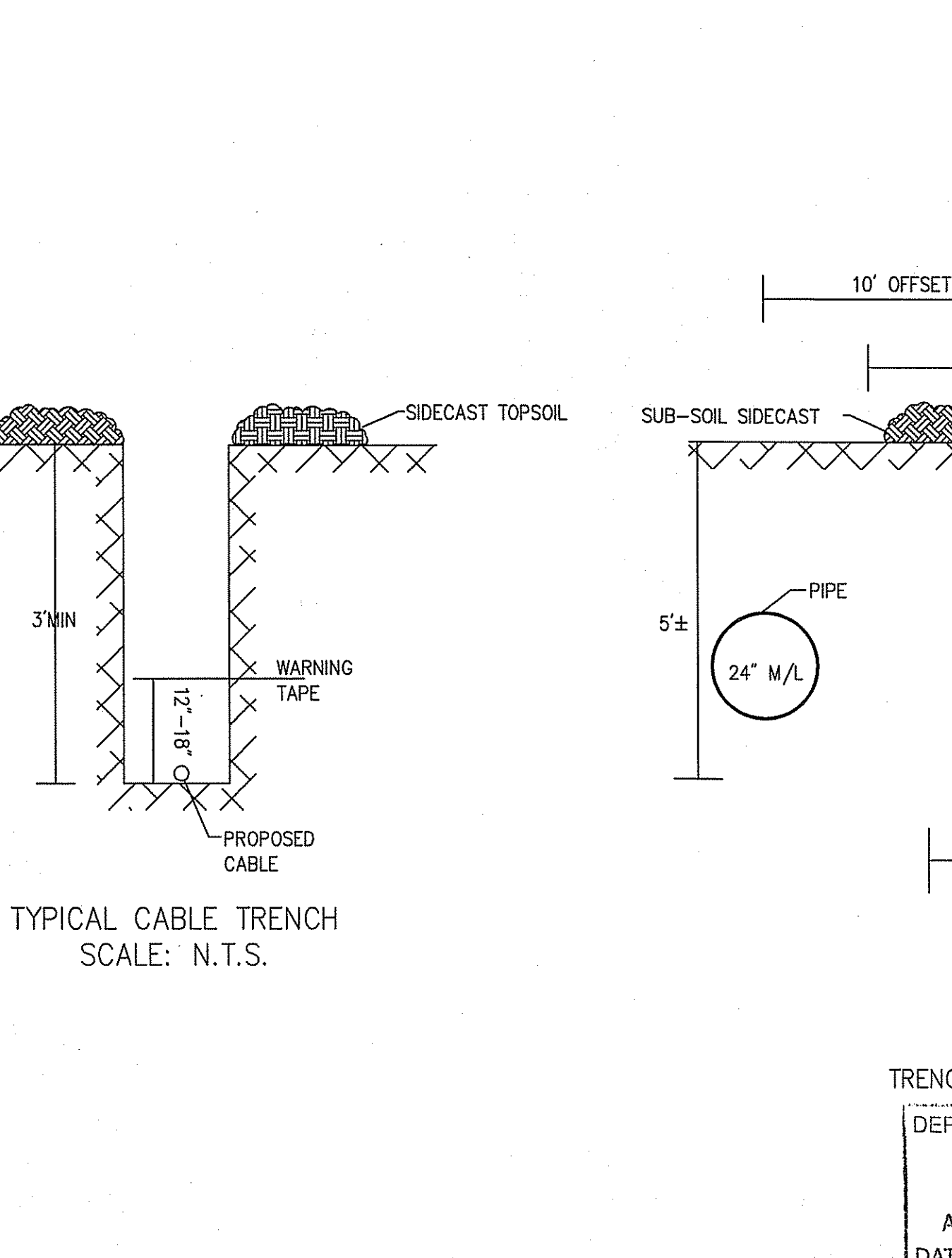
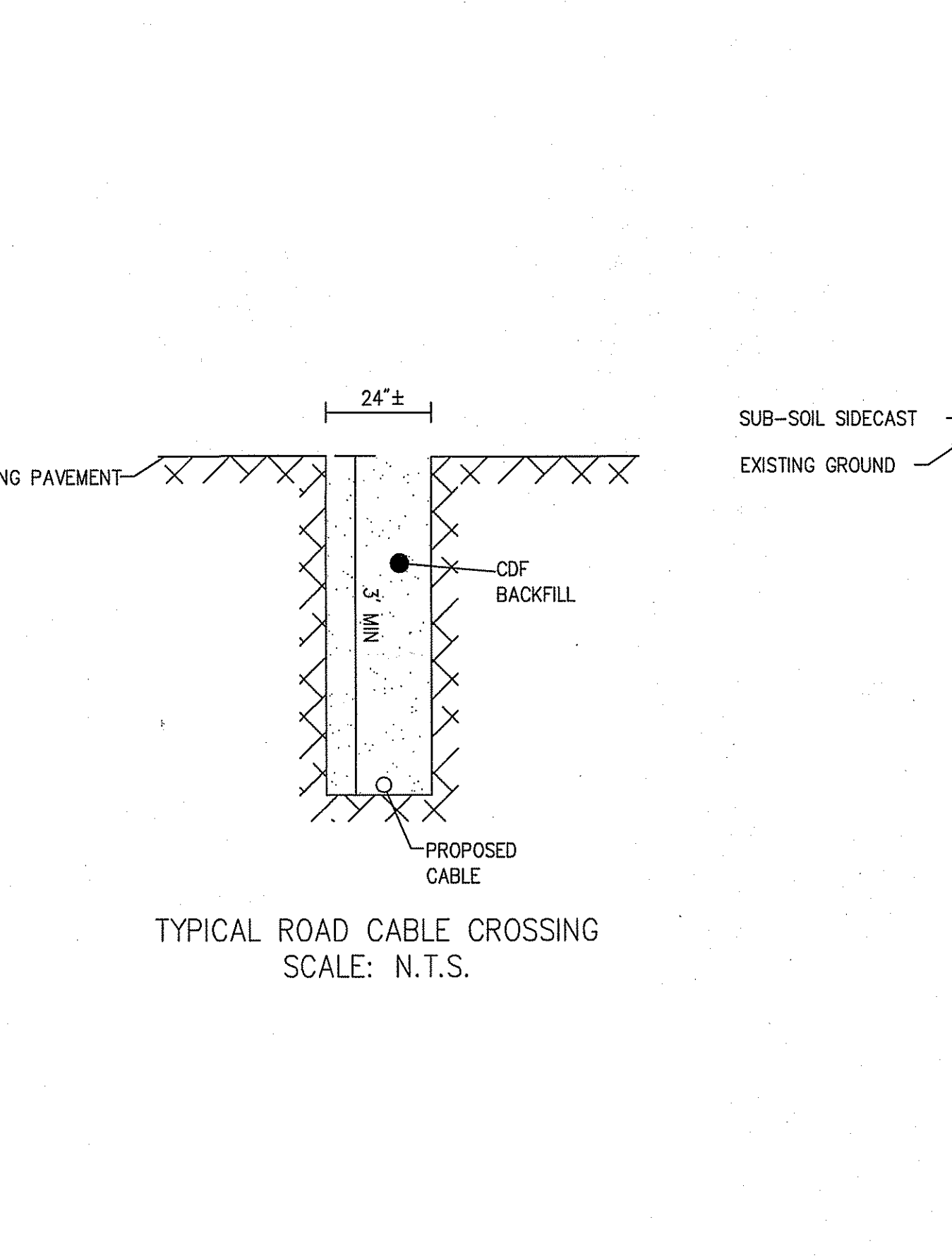
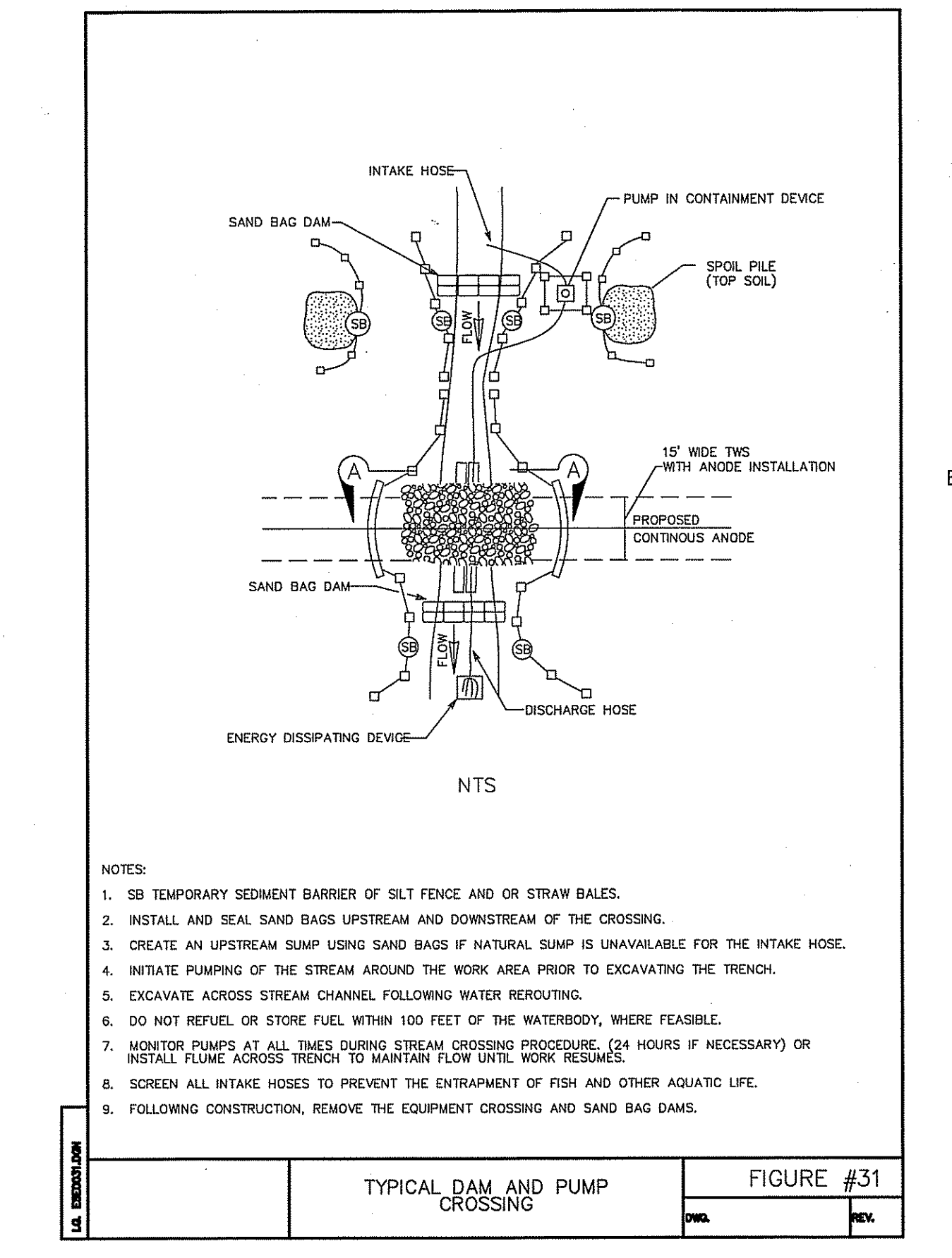
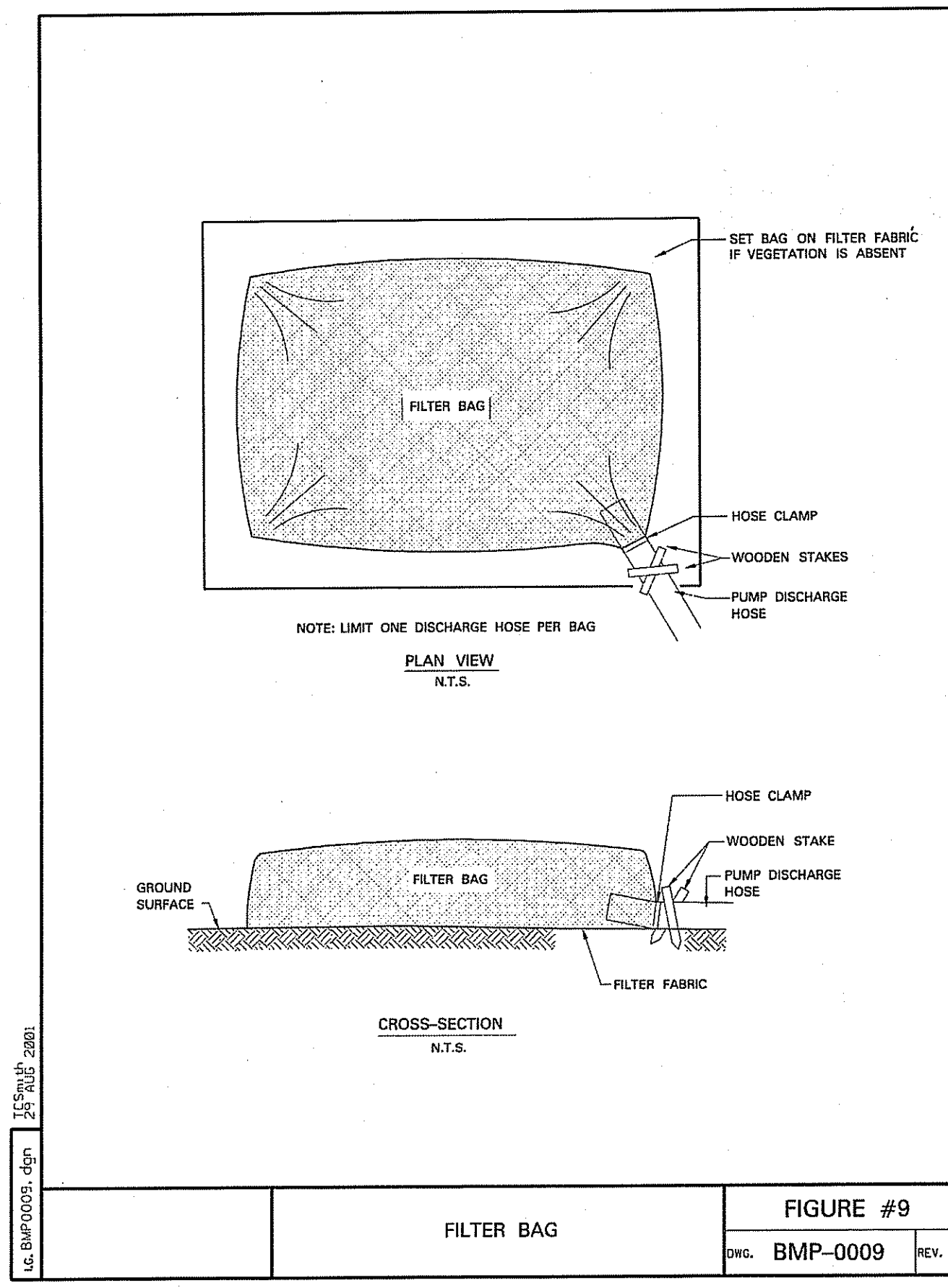
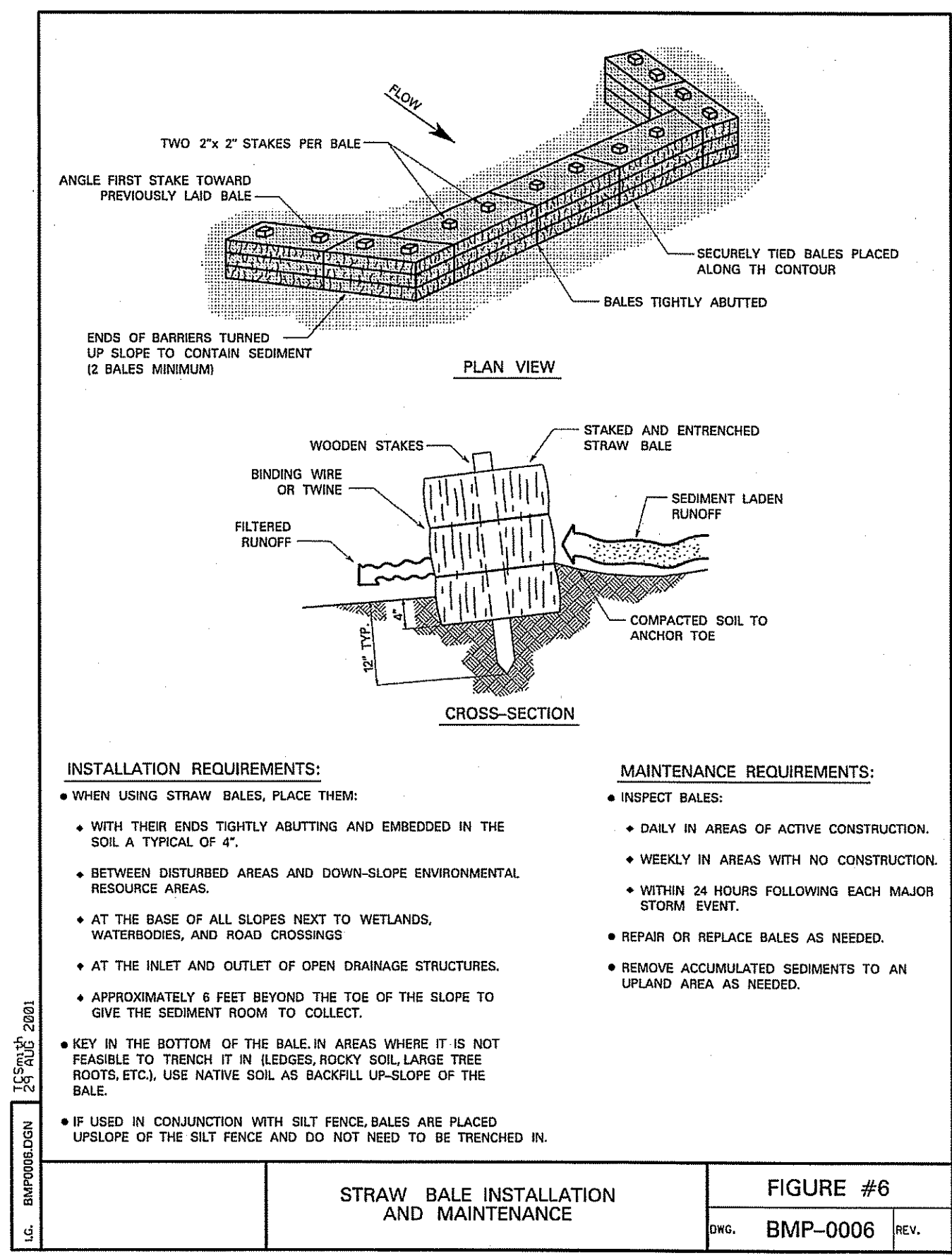
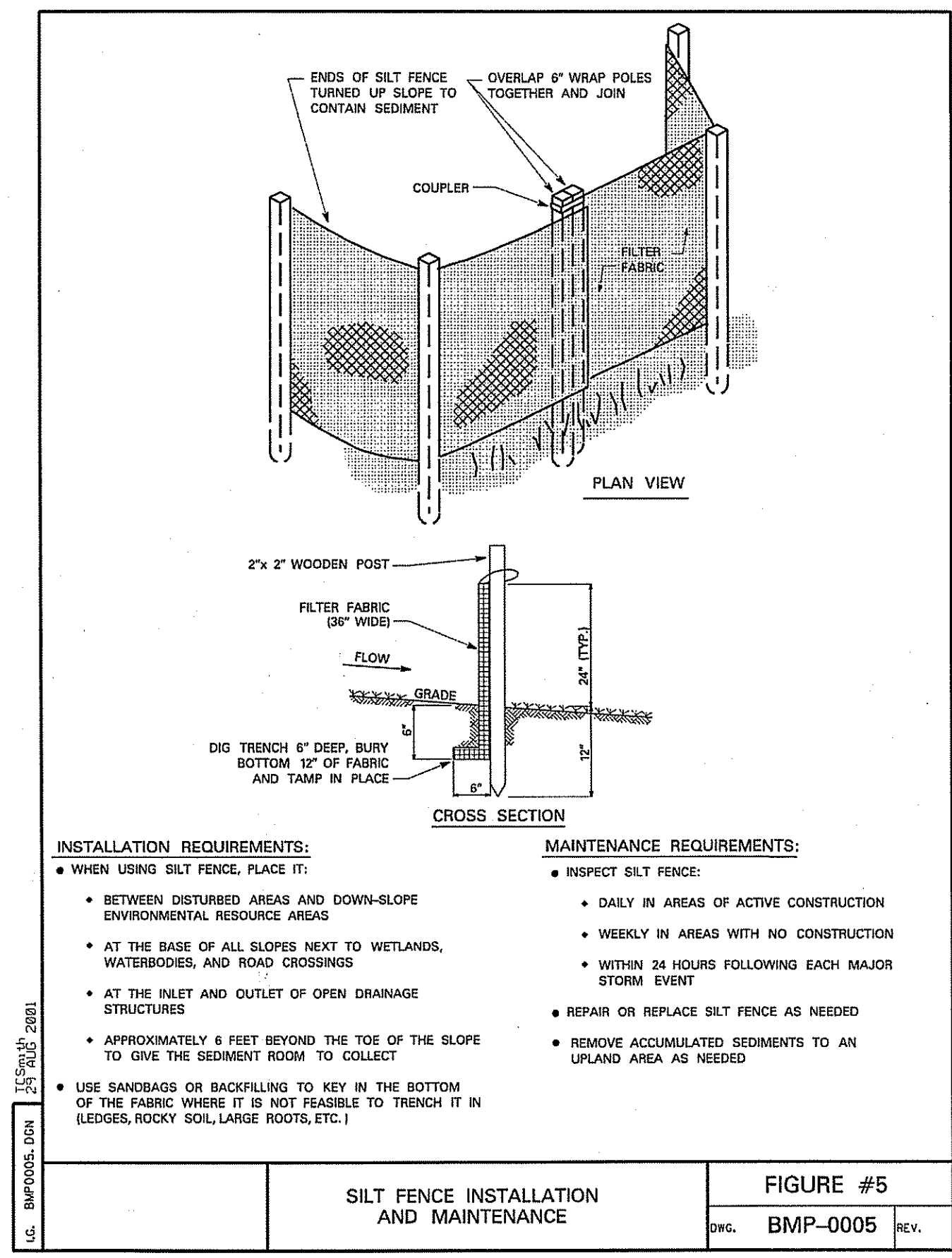
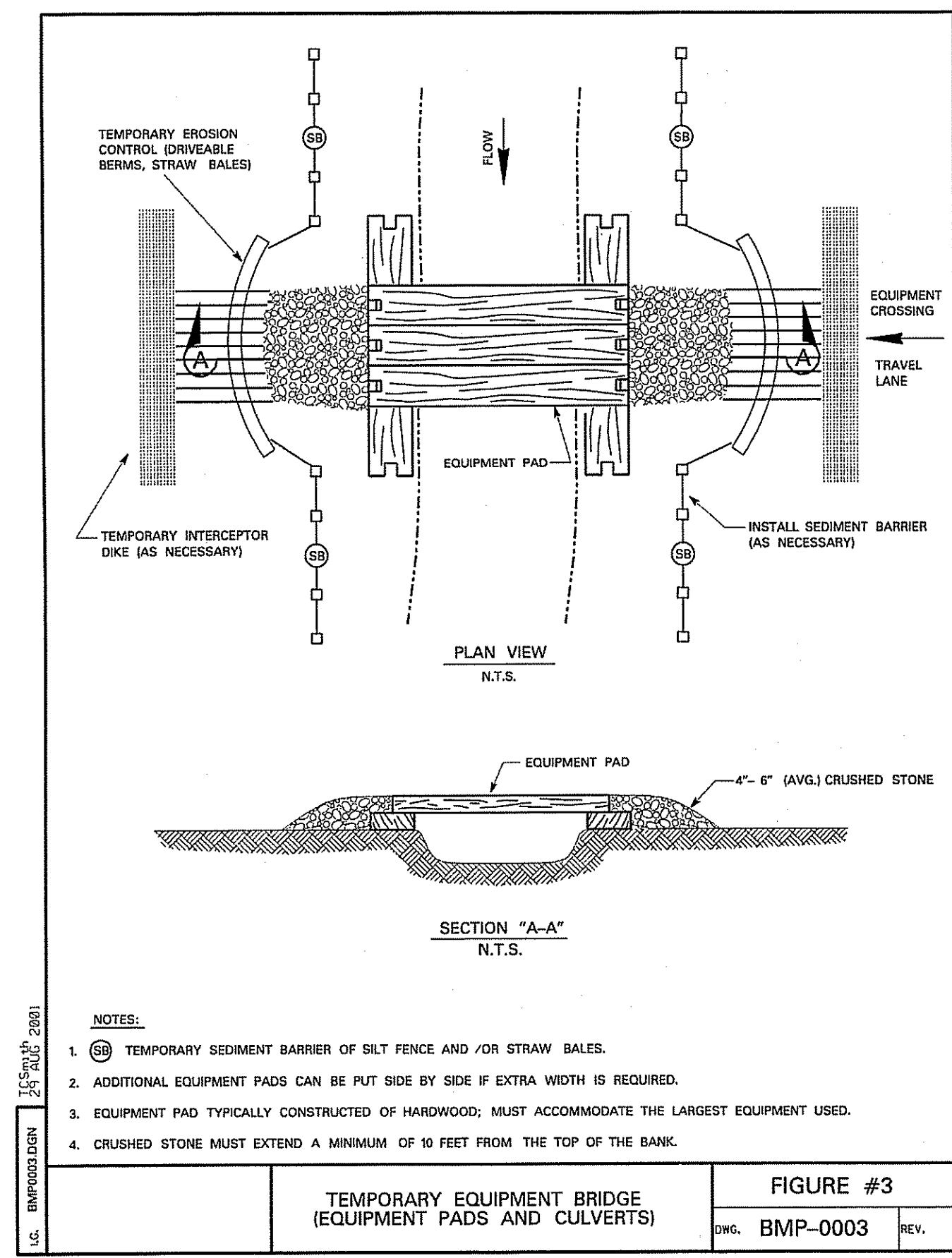
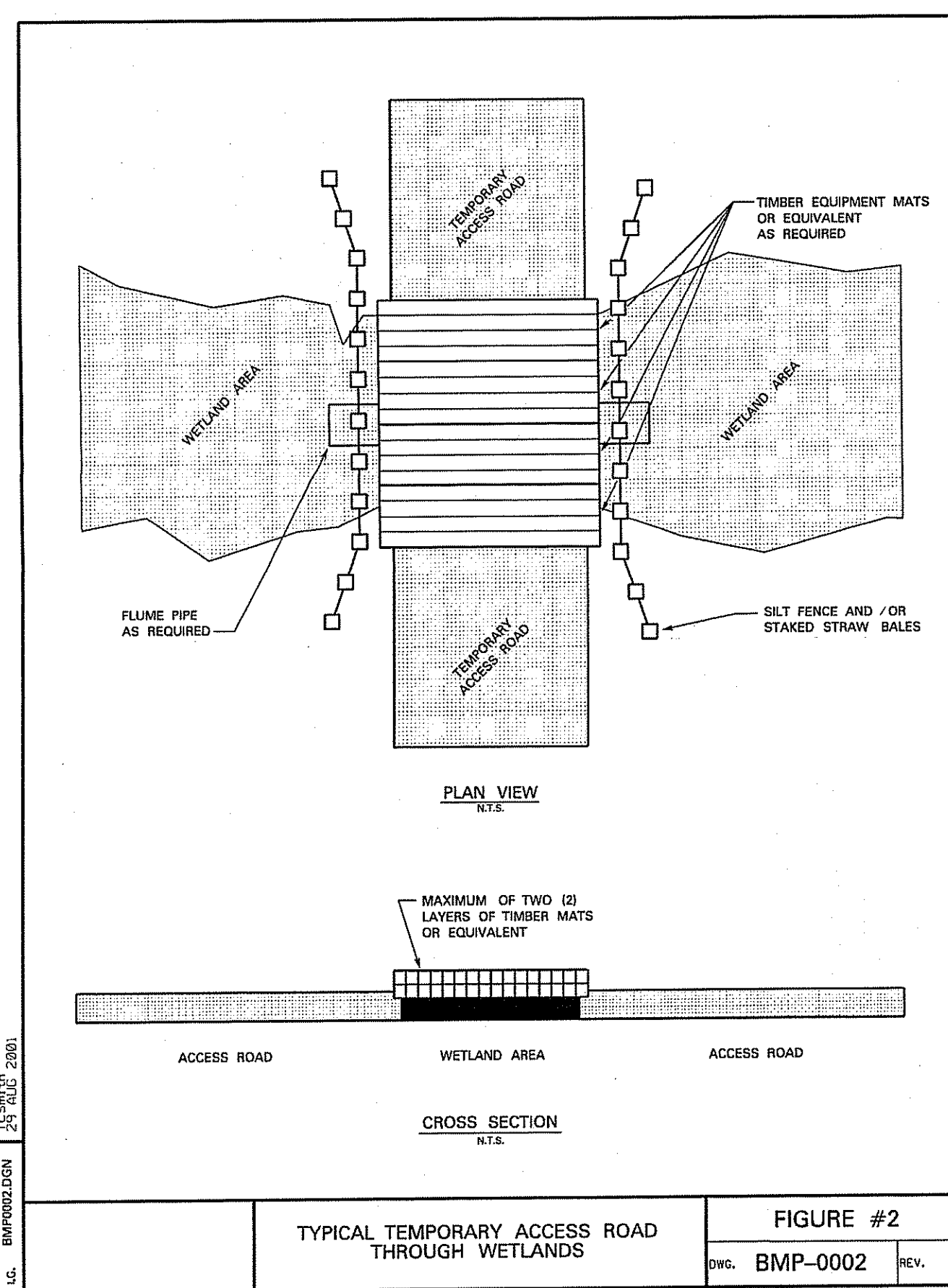
VHB
Yanase Hangen Brustlin, Inc.
101 Walnut Street, P.O. Box 9151
Watertown, Massachusetts 02471-9151
617 924-1770 • FAX 617 924-2286

DRAWN BY: SLT
SLT
8/13
CONSTRUCTION

LOC. BURRILLVILLE RI

Spectra Energy
Algonquin Gas Transmission, LLC
5400 Westheimer Court, Houston, TX 77056-5310

SEP 30 2013



DEPARTMENT OF ENVIRONMENTAL PROTECTION
OFFICE OF WATER RESOURCES
FRESHWATER WETLANDS
APPROVED WITH
AS SPECIFIED IN THE LISTING
DATED OCT 24 2013 FILE # 13-0168
NO CHANGES ALLOWED WITHOUT THE APPROVAL OF
APPROVED PLANS MUST BE AT CONSTRUCTION SITE
Nancy L. Freeman

NOT FOR CONSTRUCTION

DWG. NO.	REFERENCE DWG.	REV	DSN	CK	DESCRIPTION	ENGINEERING APPROVALS					MAINLINE AND L30B VALVE -38 LINEAR ANODE			Spectra Energy
						DRAWN BY:	BID	CONSTRUCTION	LOC.	YEAR: 2013	W.O. 400086051.02	SCALE: 1"=40'	DWG. C-374A	
						SLT	8/13		BURRILLVILLE RI					
						TITLE	SIGNATURE	DATE	SIGNATURE	DATE				

VHB
Vanasse Hangen Brustlin, Inc.
Transportation
Land Development
Development Services
101 Walnut Street, P.O. Box 9151
Waltham, Massachusetts 02471-9151
617 924 1770 • FAX 617 924 2286

Algonquin Gas Transmission, LLC
5400 Westheimer Court, Houston, TX 77056-5310