

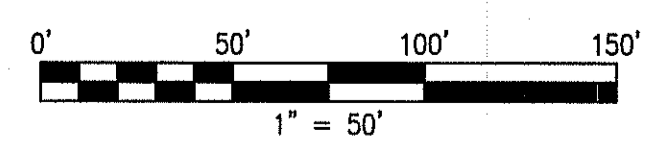
LEGEND

DESCRIPTION	SYMBOL
EXISTING	—
PROPERTY LINE	—
CONTOUR LINE	- - -
STONE WALL	—
EDGE OF PAVEMENT	—

- NOTES:**
1. PROPERTY LINE SURVEY PERFORMED BY THOMPSON FARLAND, INC. IN JULY 2013
 2. 2' CONTOURS NOT FROM ACTUAL FIELD SURVEY, TAKEN FROM RHODE ISLAND GIS
 3. TOTAL LAND AREA = 29.76± ACRES (TOTAL UPLAND AREA = 13.17 ACRES)
 4. WETLANDS DELINEATED BY SCOTT GODDARD, MAY 2013

THIS SURVEY AND PLAN CONFORMS TO A CLASS III STANDARD AS ADOPTED BY THE RHODE ISLAND BOARD OF REGISTRATION FOR PROFESSIONAL LAND SURVEYORS

PROFESSIONAL LAND SURVEYOR



MIDDLETOWN RECORD OWNER:
 ASSESSORS MAP 110 LOT 4
 SEABURY APARTMENTS LLC
 32 PERRAULT STREET
 PORTSMOUTH, RI 02871
 DEED BOOK 967 PAGE 223

PORTSMOUTH RECORD OWNER:
 ASSESSORS MAP 60 LOT 3
 SEABURY APARTMENTS LLC
 32 PERRAULT STREET
 PORTSMOUTH, RI 02871
 DEED BOOK 1173 PAGE 31

REVISIONS

MICHAEL R. FARVEAU
 1978
 PROFESSIONAL LAND SURVEYOR

THOMPSON FARLAND
 PROFESSIONAL ENGINEERS // LAND SURVEYORS

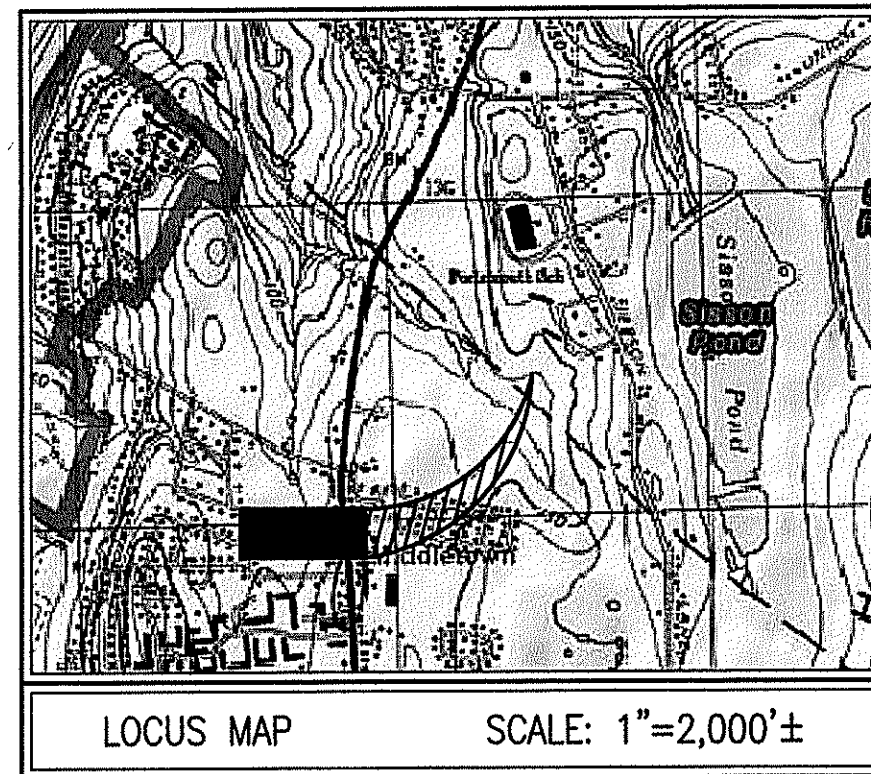
www.ThompsonFarland.com
 (MAIN OFFICE) 398 COUNTY STREET, NEW BEDFORD, MA 02740 P.508.717.3479
 NEW BEDFORD | TAUNTON | CAMBRIDGE | MARLBOROUGH

DRAWN BY: SMB
 DESIGNED BY:
 CHECKED BY: MRD

WETLAND PLAN OF LAND
 JEPSON LANE
 ASSESSORS MAP 60 LOT 3 & MAP 110 LOT 4
 PORTSMOUTH & MIDDLETOWN, RHODE ISLAND

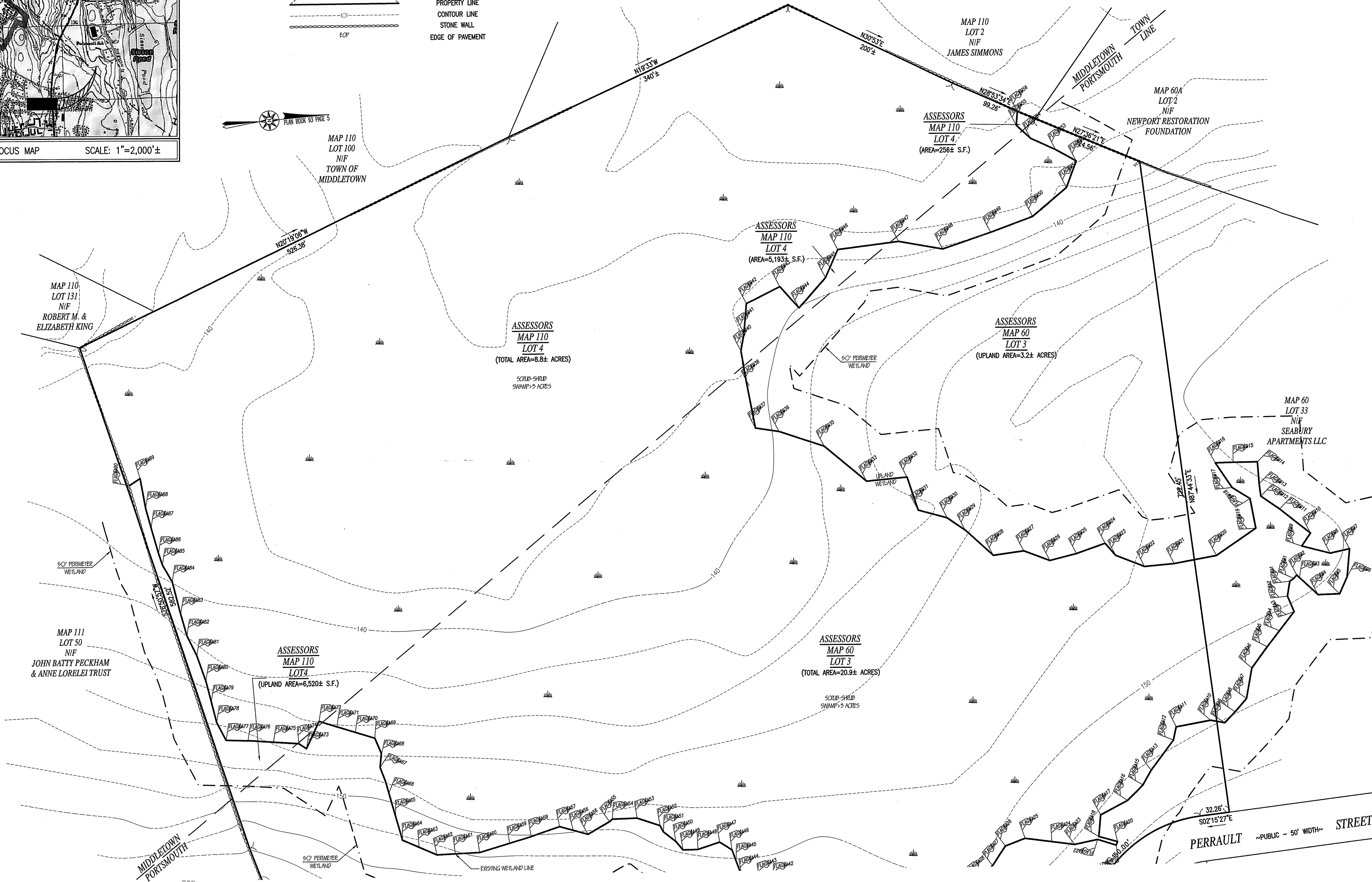
PREPARED FOR:
 JAMES CHARRIER
 531 UNION STREET
 NEW BEDFORD, MA 02740

AUGUST 22, 2013
 SCALE: 1"=50'
 JOB NO. 12-410
 LATEST REVISION:



LEGEND

EXISTING	DESCRIPTION
—————	PROPERTY LINE
- - - - -	CONTOUR LINE
=====	STONE WALL
=====	EDGE OF PAVEMENT

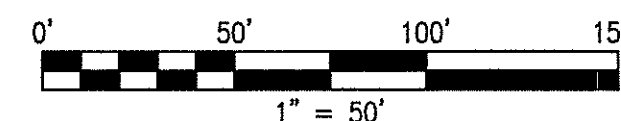


- NOTES:**
1. PROPERTY LINE SURVEY PERFORMED BY THOMPSON FARLAND, INC. IN JULY 2013
 2. 2" CONTOURS NOT FROM ACTUAL FIELD SURVEY, TAKEN FROM RHODE ISLAND GIS
 3. TOTAL LAND AREA = 29.76± ACRES (TOTAL UPLAND AREA = 13.17 ACRES)
 4. WETLANDS DELINEATED BY SCOTT GODDARD, MAY 2013

THIS SURVEY AND PLAN CONFORMS TO A CLASS III STANDARD AS ADOPTED BY THE RHODE ISLAND BOARD OF REGISTRATION FOR PROFESSIONAL LAND SURVEYORS

PROFESSIONAL LAND SURVEYOR

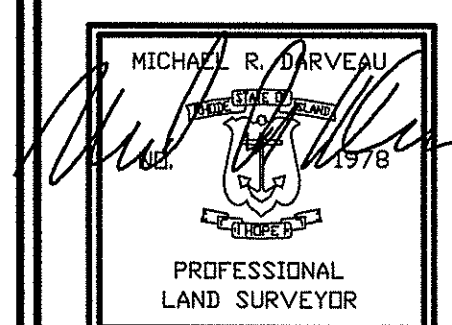
Michael R. Farveau



MIDDLETOWN RECORD OWNER:
 ASSESSORS MAP 110 LOT 4
 SEABURY APARTMENTS LLC
 32 PERRAULT STREET
 PORTSMOUTH, RI 02871
 DEED BOOK 967 PAGE 223

PORTSMOUTH RECORD OWNER:
 ASSESSORS MAP 60 LOT 3
 SEABURY APARTMENTS LLC
 32 PERRAULT STREET
 PORTSMOUTH, RI 02871
 DEED BOOK 1173 PAGE 31

REVISIONS



THOMPSON FARLAND
 PROFESSIONAL ENGINEERS // LAND SURVEYORS
 www.ThompsonFarland.com
 (MAIN OFFICE) 395 COUNTY STREET, NEW BEDFORD, MA 02740 P.508.717.3479
 NEW BEDFORD | TAUNTON | CAMBRIDGE | MARLBOROUGH

DRAWN BY: ***
 DESIGNED BY: CAF
 CHECKED BY: CAF

WETLAND PLAN OF LAND
 JEPSON LANE
 ASSESSORS MAP 60 LOT 3 & 110 LOT 4
 PORTSMOUTH & MIDDLETOWN, RHODE ISLAND
 PREPARED BY: JAMES CHARRIER
 331 UNION STREET
 FOR: NEW BEDFORD, MA 02740

AUGUST 22, 2013
 SCALE: 1"=50'
 JOB NO. 12-410
 LATEST REVISION: