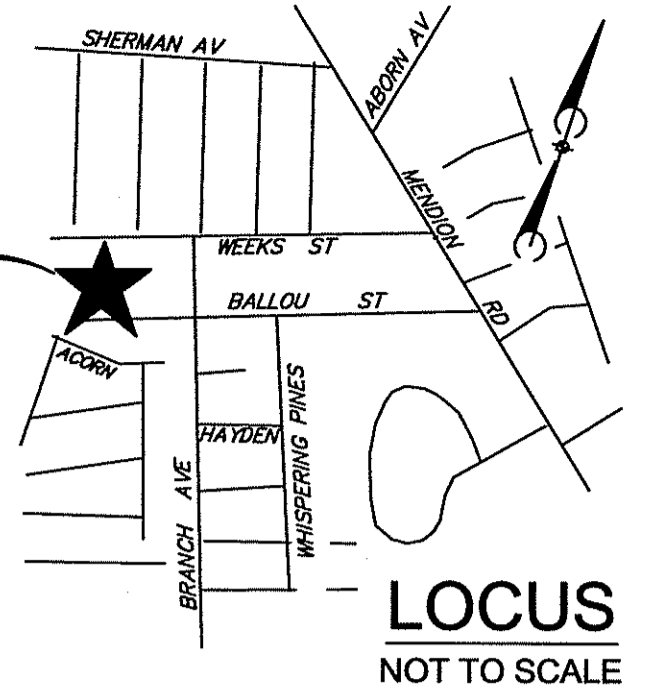


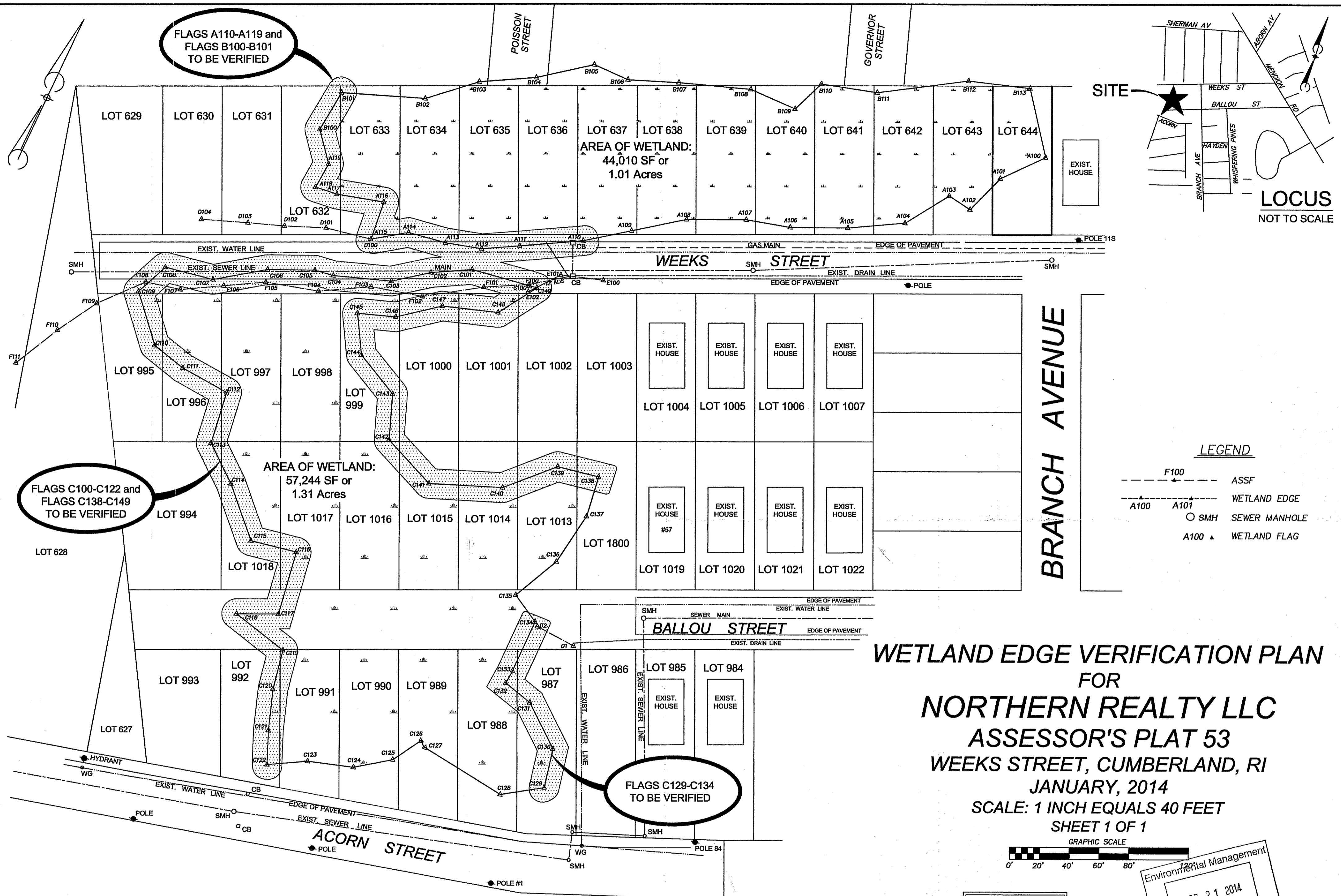
FLAGS A110-A119 and
FLAGS B100-B101
TO BE VERIFIED

FLAGS C100-C122 and
FLAGS C138-C149
TO BE VERIFIED

FLAGS C129-C134
TO BE VERIFIED



LOCUS
NOT TO SCALE

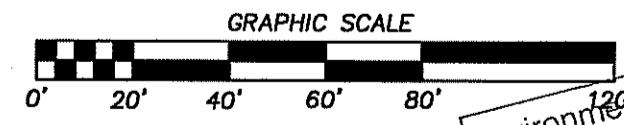


BRANCH AVENUE

LEGEND

- F100 --- ASSF
- ▲- A100 A101 - WETLAND EDGE
- SMH SEWER MANHOLE
- A100 ▲ WETLAND FLAG

**WETLAND EDGE VERIFICATION PLAN
FOR
NORTHERN REALTY LLC
ASSESSOR'S PLAT 53
WEEKS STREET, CUMBERLAND, RI
JANUARY, 2014
SCALE: 1 INCH EQUALS 40 FEET
SHEET 1 OF 1**

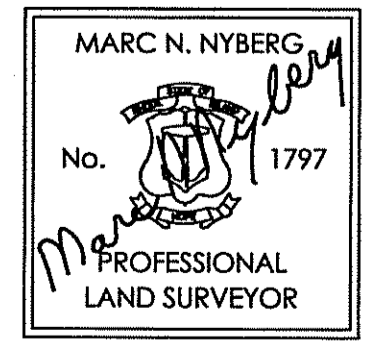


Environmental Management
FEB 21 2014

NOTE:
WETLAND EDGE DELINEATION BY:
ECOTONES, INC., PO BOX 1131, EAST GREENWICH, RI 02818

THIS PLAN IS SUBSTANTIALLY CORRECT IN ACCORDANCE WITH A CLASS IV STANDARD AS ADOPTED BY THE RHODE ISLAND BOARD OF REGISTRATION FOR PROFESSIONAL LAND SURVEYORS. THIS PLAN IS NOT TO BE CONSTRUED AS AN ACCURATE BOUNDARY SURVEY AND IS SUBJECT TO SUCH CHANGES AS AN ACCURATE BOUNDARY SURVEY MAY DISCLOSE.

Marc N. Nyberg
MARC N. NYBERG PROFESSIONAL LAND SURVEYOR



MARC N. NYBERG ASSOCIATES, INC.
LAND SURVEYORS and PLANNERS
501 GREAT ROAD, UNIT 104
NORTH SMITHFIELD, RHODE ISLAND 02896
TEL (401) 762-2870 FAX (401) 762-2871