

Plans

Issued for: **RIDEM Request for Preliminary Determination**

Date Issued: March 21, 2014

Latest Issue: March 21, 2014

Index

No.	Drawing Title	Latest Issue
C-1	Title Sheet	3-21-2014
C-2	General Notes and Details	3-21-2014
C-3	Key Plan	3-21-2014
C-4 to C-5	Soil Erosion and Sediment Control Plans 1 and 2	3-21-2014

S-171 115kV Transmission Tap Line Conductor Clearance Refurbishment Project

Johnston, Rhode Island

Environmental Management
MAR 21 2014
Office of Water Resources

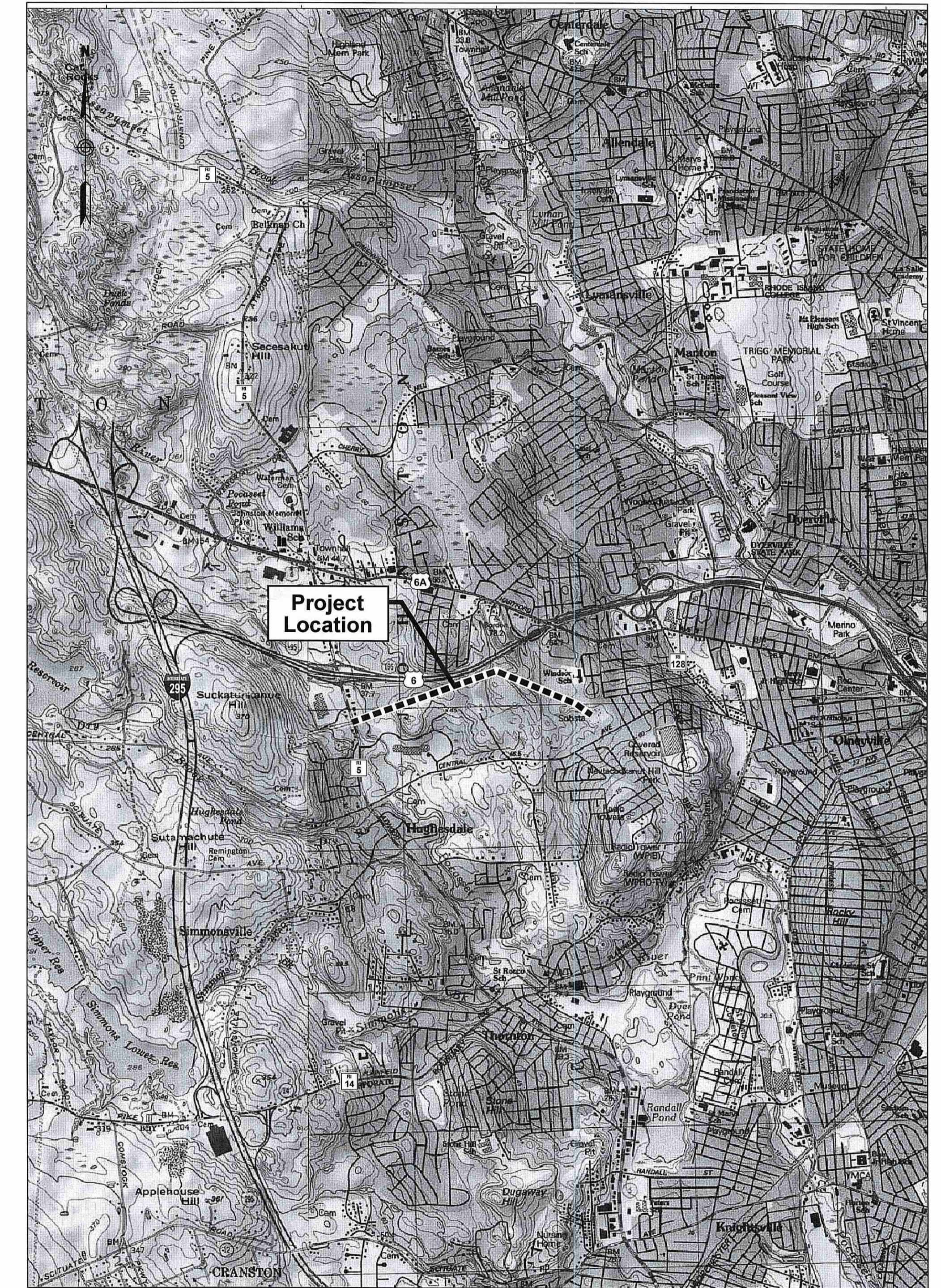


Vanasse Hangen Brustlin, Inc.
Transportation
Land Development
Environmental Services

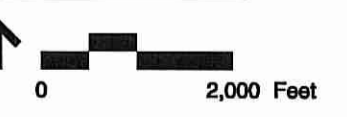
10 Dorrance Street, Suite 400
Providence, Rhode Island 02903
401-272-8100 / FAX 401-273-9694

Owner/Applicant:

The Narragansett Electric Company
d/b/a National Grid
280 Melrose Street
Providence, Rhode Island 02907
401-784-7490



Locus Map



DEPARTMENT OF ENVIRONMENTAL MANAGEMENT
OFFICE OF WATER RESOURCES
FRESHWATER WETLANDS PROGRAM
APPROVED WITH CONDITIONS
AS SPECIFIED IN THE LETTER OF APPROVAL
DATED APR 30 2014 FILE # 14-0062
NO CHANGES ALLOWED WITHOUT PRIOR APPROVAL
APPROVED PLANS MUST BE AT CONSTRUCTION SITE

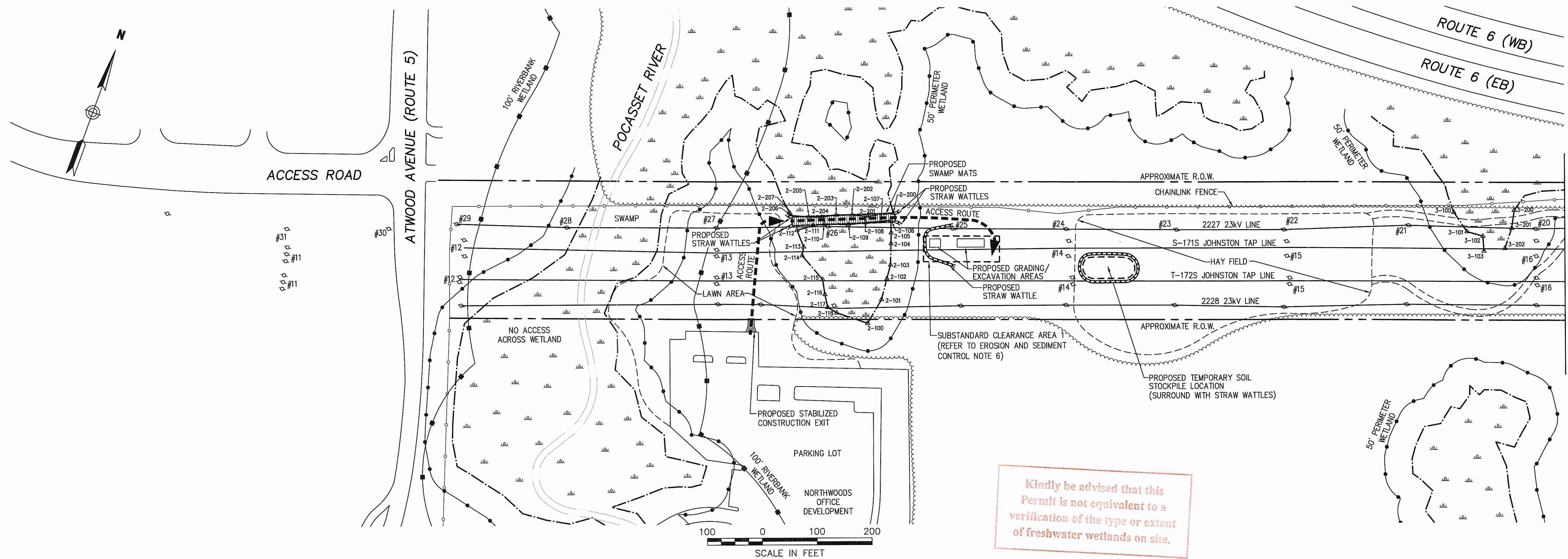
Michael D. Winters



Vanasse Hangen Brustlin, Inc.

Transportation
Land Development
Environmental Services

10 Dorrance Street, Suite 400
Providence, Rhode Island 02903
401.272.8100 • FAX 401.273.9694



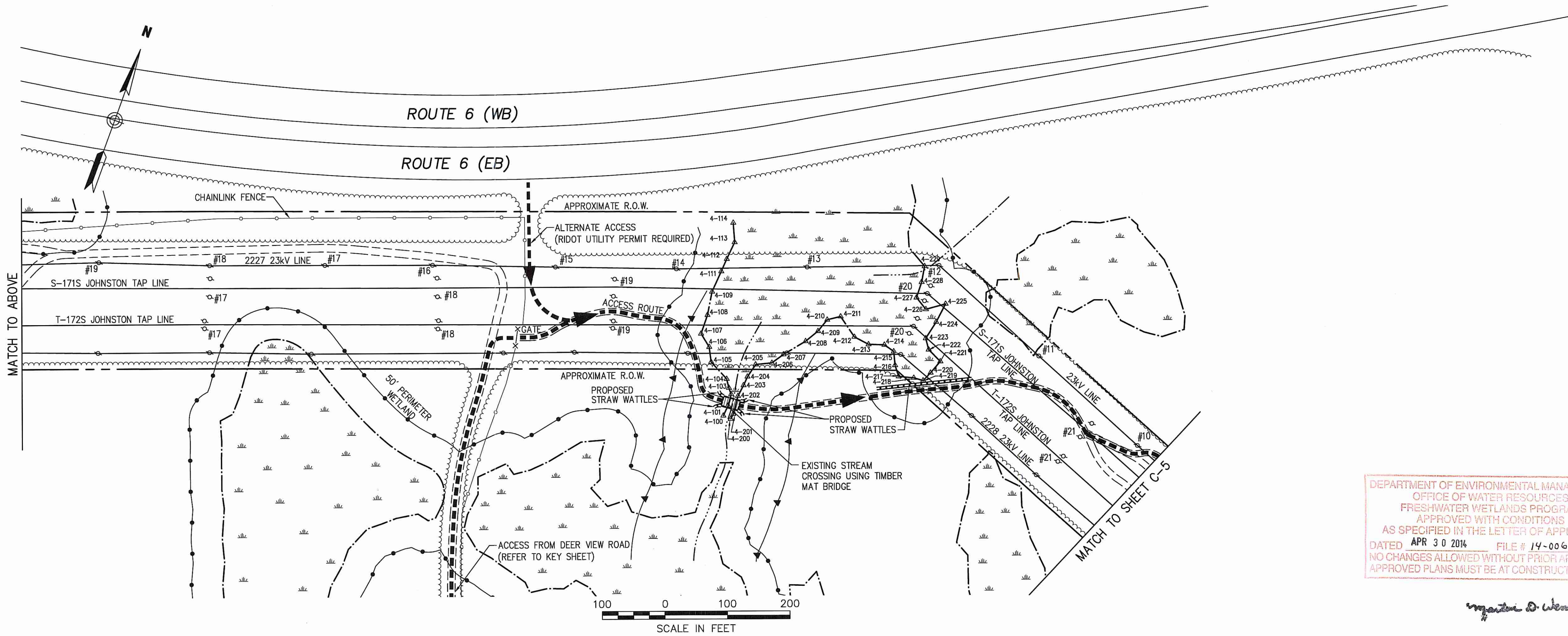
LEGEND

- DELINEATED WETLAND BOUNDARY
- WETLANDS
- STREAM/BROOK/ASSF
- EXISTING DIRT ROAD
- PROPOSED POLE ACCESS
- PROPOSED SWAMP MATS
- PROPOSED STRAW WATTLE
- STATE-REGULATED PERIMETER WETLAND
- STATE-REGULATED 100' RIVERBANK WETLAND
- STATE-REGULATED 200' RIVERBANK WETLAND

Environmental Management
MAR 21 2014
Office of Water Resources

Kindly be advised that this Permit is not equivalent to a verification of the type or extent of freshwater wetlands on site.

PER DEM
No work within 50' perimeter wetlands is to occur beyond the stream wattle, swamps mats, and the timber mat bridge depicted on this plan sheet.



DEPARTMENT OF ENVIRONMENTAL MANAGEMENT
OFFICE OF WATER RESOURCES
FRESHWATER WETLANDS PROGRAM
APPROVED WITH CONDITIONS
AS SPECIFIED IN THE LETTER OF APPROVAL
DATED APR 30 2014 FILE # 14-0062
NO CHANGES ALLOWED WITHOUT PRIOR APPROVAL
APPROVED PLANS MUST BE AT CONSTRUCTION SITE

No.	Revision	Date	Appr.

Designed by _____ Drawn by _____ Checked by _____
CAD checked by _____ Approved by _____
Scale: As Noted Date: March 21, 2014
Project Title: S-171 115kV Transmission Tap Line Conductor Clearance Refurbishment Project
Johnston, Rhode Island

Issued for: RIDEM Request for Preliminary Determination

Not Approved for Construction
Drawing Title: Soil Erosion and Sediment Control Plan 1

Sheet of 4

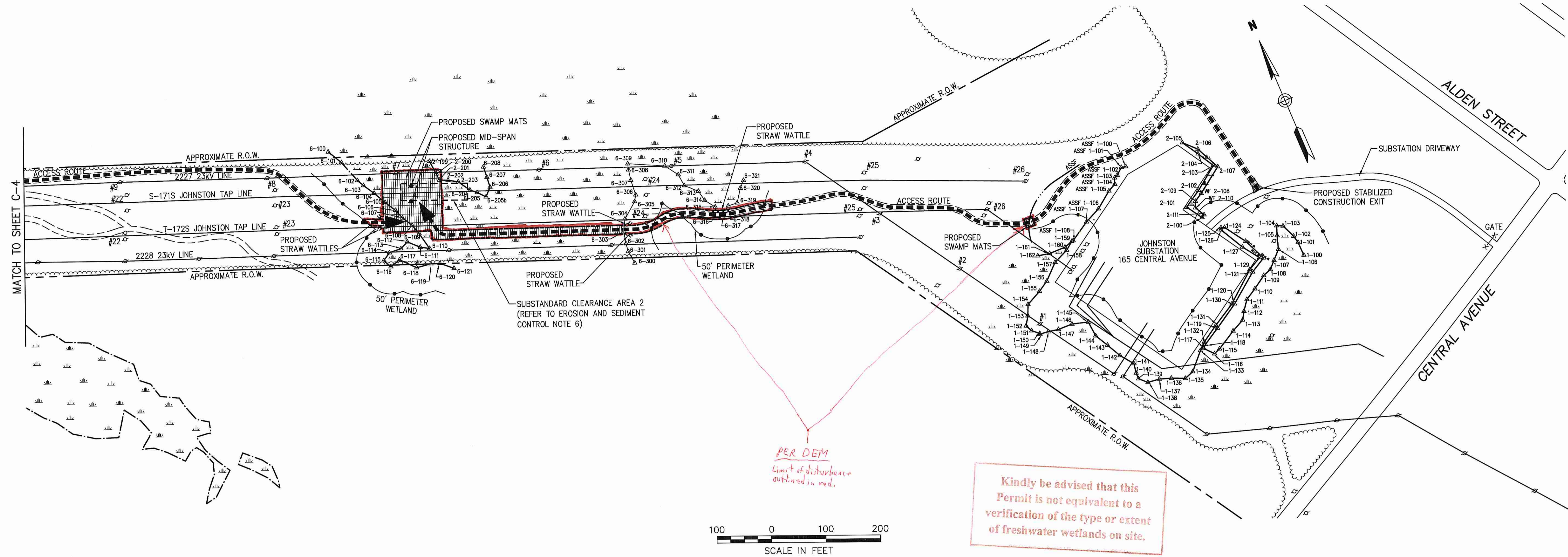
Drawing Number: C-4
Project Number: 72176.15
9/21/2014



Vanasse Hangen Brustlin, Inc.

Transportation
Land Development
Environmental Services

10 Dorrance Street, Suite 400
Providence, Rhode Island 02903
401.272.8100 • FAX 401.273.9694



LEGEND

- DELINEATED WETLAND BOUNDARY
- WETLANDS
- STREAM/BROOK/ASSF
- EXISTING DIRT ROAD
- PROPOSED POLE ACCESS
- PROPOSED SWAMP MATS
- PROPOSED STRAW WATTLE
- STATE-REGULATED PERIMETER WETLAND
- STATE-REGULATED 100' RIVERBANK WETLAND
- STATE-REGULATED 200' RIVERBANK WETLAND

Environmental Management
MAR 21 2014
Office of Water Resources



Kindly be advised that this Permit is not equivalent to a verification of the type or extent of freshwater wetlands on site.

PER DEM
Limit of disturbance outlined in red.

No.	Revision	Date	Appd.

Designed by _____ Drawn by _____ Checked by _____
CAD checked by _____ Approved by _____
Scale As Noted Date March 21, 2014
Project Title

S-171 115kV
Transmission Tap Line
Conductor Clearance
Refurbishment Project
Johnston, Rhode Island

Issued for
RIDEM Request for
Preliminary Determination

Not Approved for Construction
Drawing Title
**Soil Erosion and
Sediment Control Plan 2**

DEPARTMENT OF ENVIRONMENTAL MANAGEMENT
OFFICE OF WATER RESOURCES
FRESHWATER WETLANDS PROGRAM
APPROVED WITH CONDITIONS
AS SPECIFIED IN THE LETTER OF APPROVAL
DATED APR 30 2014 FILE # 14-0062
NO CHANGES ALLOWED WITHOUT PRIOR APPROVAL
APPROVED PLANS MUST BE AT CONSTRUCTION SITE

Jonathan D. Wencel

Drawing Number
C-5
Sheet of 5
Project Number
72176.15

Saved Friday, March 21, 2014 10:48:14 AM DWG PLOTTED Friday, March 21, 2014 10:48:53 AM White, Dove