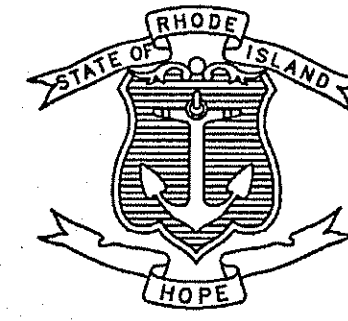


INDEX

SHEET NO.	DESCRIPTION
1	COVER SHEET
2	STANDARD PLAN SYMBOLS & STANDARD LEGEND
3	STANDARD NOTES - 1
4	STANDARD NOTES - 2
5	JOB SPECIFIC PLAN SYMBOLS, LEGEND & NOTES
6	LIST OF ABBREVIATIONS
7	TYPICAL ROADWAY SECTIONS
8	GENERAL PLAN
9	PROFILE
10	ALIGNMENT PLAN
11	GRADING PLAN
12	GENERAL NOTES - 1 (STRUCTURE)
13	GENERAL NOTES - 2 (STRUCTURE)
14	GENERAL NOTES - 3 (STRUCTURE)
15	GENERAL PLAN AND ELEVATION
16-17	DEMOLITION PLAN
18	BORING LOCATION PLAN
19-21	BORINGS LOGS
22-23	PILE LAYOUT AND PAY LIMITS
24-25	PRECAST MODULAR ABUTMENT DETAILS
26-27	PRECAST MODULAR ABUTMENT ASSEMBLY PLAN
28-29	CAST IN PLACE ABUTMENT PLAN & ELEVATION
30	TYPICAL ABUTMENT SECTIONS & DETAILS
31	APPROACH SLAB PLAN & DETAILS
32	FRAMING PLAN
33-35	BOX BEAM DETAILS
36	MISCELLANEOUS DETAILS
37	BEARING DETAILS
38-40	WINGWALL DETAILS
41-42	FOUR BAR STEEL BRIDGE RAIL (CRASH TESTED)
43-44	END POST DETAILS
45	TRAFFIC CONTROL PLAN
46	BRIDGE CLOSURE PLAN
47	CROSS SECTIONS

STATE OF RHODE ISLAND



DEPARTMENT OF TRANSPORTATION
 PLAN, PROFILE AND SECTIONS OF PROPOSED
SHIPPEE BRIDGE NO. 307
REPLACEMENT OF SHIPPEE BRIDGE NO. 307

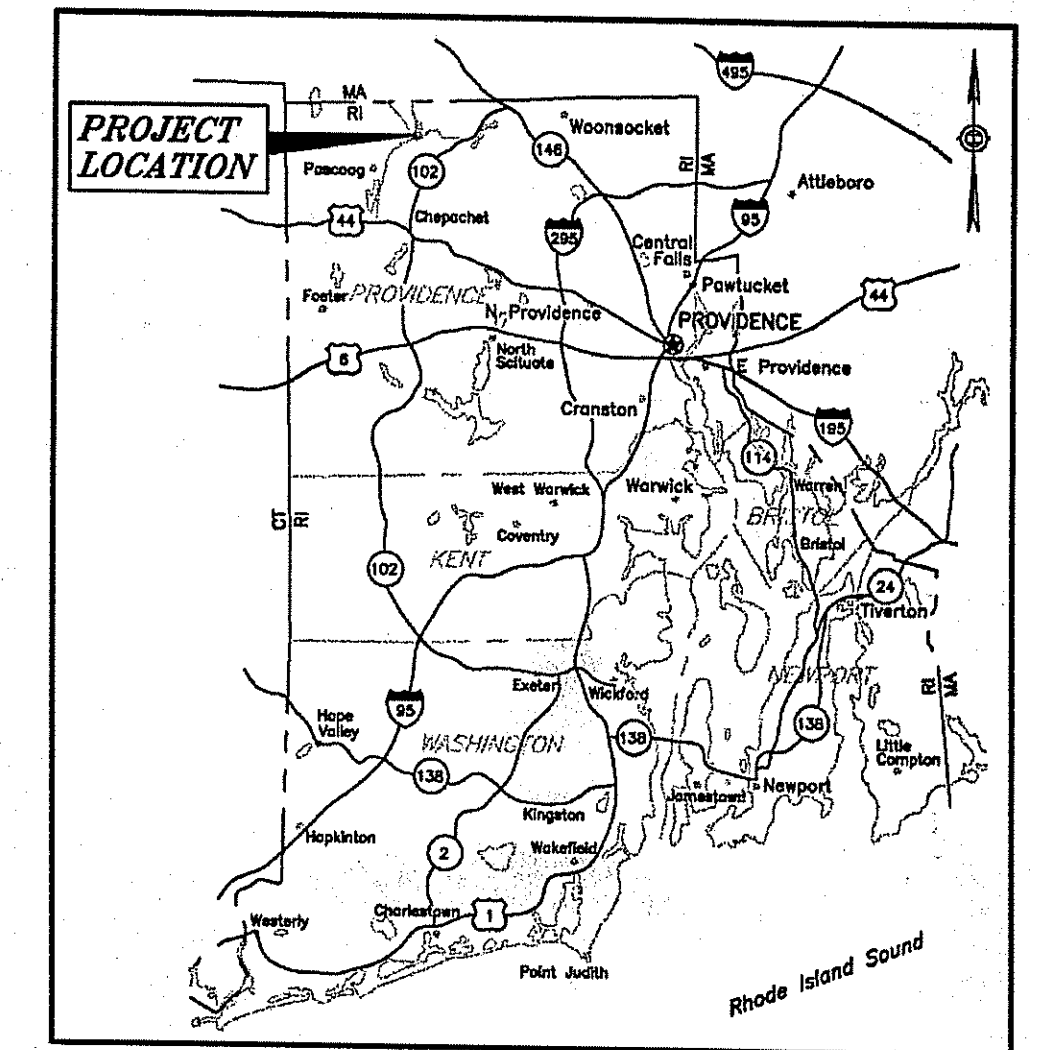
ROUTE 98 (SHERMAN FARM ROAD) OVER NIPMUC RIVER

TOWN OF BURRILLVILLE
 COUNTY OF PROVIDENCE

R.I. CONTRACT NO. 201X-XX-XXX F.A. PROJECT NO. XXX-XXXX(XXX)

0.07 MILES

FED. ROAD DIST. NO.	STATE	FEDERAL AID PROJECT NO.	FISCAL YEAR	SHEET NO.	TOTAL SHEETS
1	RI	XXX-XXXX(XXX)		1	47



LOCUS MAP
 1 inch = 10 miles±

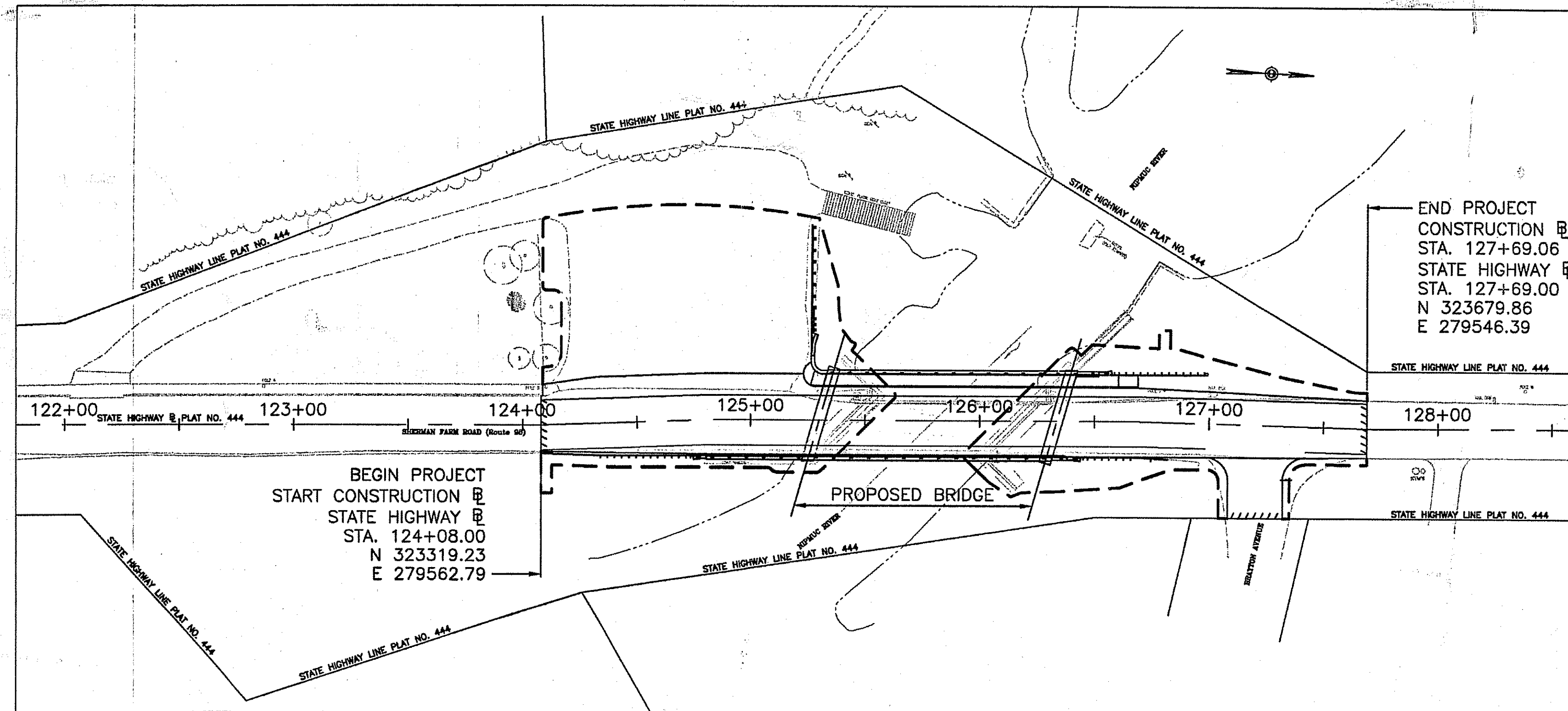
PAVEMENT NOTES

2" CLASS 12.5 BITUMINOUS CONCRETE SURFACE COURSE
 6" CLASS 19 BITUMINOUS CONCRETE BASE COURSE
 12" GRAVEL BORROW SUBBASE COURSE

DESIGN DESIGNATION

ADT 1,400 VPD - 2009
 DESIGN SPEED 45 MPH (40 MPH EXISTING)
 % TRUCK 2.6% - 2006

R.I. STANDARD SPECIFICATIONS AND STANDARD DETAILS
 SPECIFICATIONS TO GOVERN THIS PROJECT ARE THE R.I. STANDARD SPECIFICATIONS FOR ROAD AND BRIDGE CONSTRUCTION, AMENDED AUGUST 2013, WITH ALL REVISIONS, AND THE STATE AND FEDERAL SPECIAL PROVISIONS INCLUDED IN THE CONTRACT DOCUMENTS. STANDARD DETAILS FOR THIS PROJECT ARE R.I. STANDARD DETAILS, 1998 EDITION, WITH ALL REVISIONS.



LAYOUT PLAN
 1" = 40'±

SCALES OF DRAWINGS

Plans	1 inch = 20 feet
Profiles	1 inch = 20 feet Horizontal 1 inch = 4 feet Vertical
Cross Sections	1 inch = 4 feet Horizontal 1 inch = 4 feet Vertical

BASE OF LEVELS
 NGVD 29

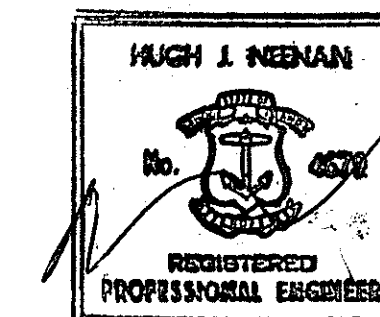


66 Capital Boulevard, Second Floor
 Rocky Hill, CT 06067
 P: 860 436 5600 F: 860 436 5601
 382 Wampanoag Trail
 East Providence, RI 02915
 F: 401 233 2993 F: 401 383 0773

Contract Number 201X-XX-XXX

Number of Sheet 1

Total Sheets 47



5-29-14

R.I. DEPARTMENT OF TRANSPORTATION

APPROVED _____

DEPUTY CHIEF ENGINEER _____ DATE _____

APPROVED _____

CHIEF ENGINEER _____ DATE _____

APPROVED _____

DIRECTOR _____ DATE _____

DEPARTMENT OF TRANSPORTATION
 FEDERAL HIGHWAY ADMINISTRATION

APPROVED _____

DIVISION ADMINISTRATOR _____ DATE _____

RECEIVED JUN 11 2014

DEPARTMENT OF ENVIRONMENTAL MANAGEMENT
 OFFICE OF WATER RESOURCES
 FRESHWATER WETLANDS PROGRAM
 APPROVED WITH CONDITIONS
 AS SPECIFIED IN THE LETTER OF APPROVAL
 DATED JUL 22 2014 FILE # 14-011
 NO CHANGES ALLOWED WITHOUT PRIOR APPROVAL
 APPROVED PLANS MUST BE AT CONSTRUCTION SITE

Charles A. Herbert 5/10/2014

EXISTING

NEW

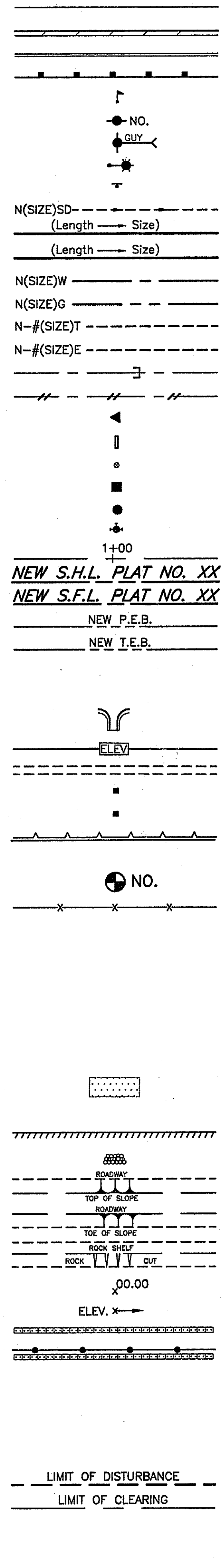
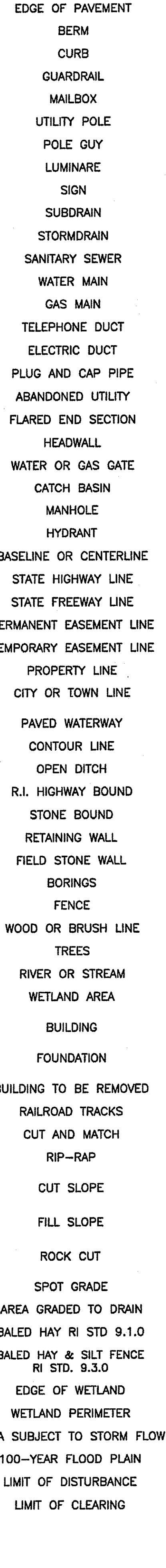
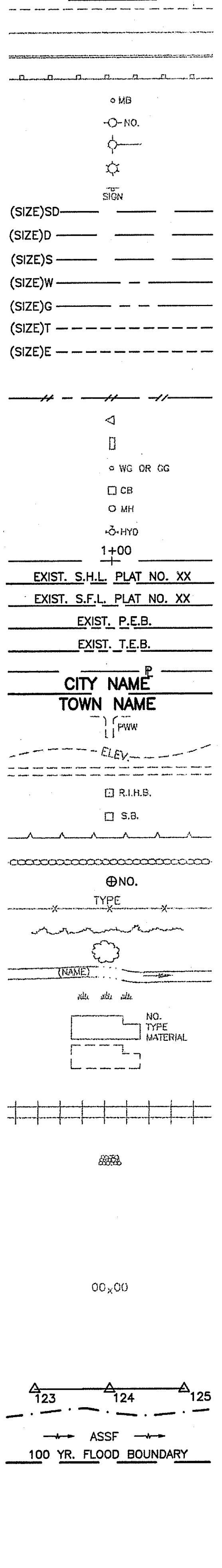


Table listing infrastructure items and their corresponding codes (e.g., 1.1.0, 1.3.0, 2.1.0, etc.) for both existing and new conditions.

Table listing infrastructure items and their corresponding codes (e.g., 7.4.2, 7.5.0, 7.5.1A, etc.) for new conditions.

Table listing infrastructure items and their corresponding codes (e.g., AB, ABM, AC, AD, etc.) for new conditions.

Table listing infrastructure items and their corresponding codes (e.g., ADJUST CATCH BASIN TO GRADE, ADJUST CATCH BASIN TO MANHOLE, etc.) for new conditions.

Table listing infrastructure items and their corresponding codes (e.g., NFB, NIC, NNB, etc.) for new conditions.

Table with columns: FED. ROAD DIV. NO., STATE, FEDERAL AID PROJECT NO., FISCAL YEAR, SHEET NO., TOTAL SHEETS.

DEPARTMENT OF ENVIRONMENTAL MANAGEMENT OFFICE OF WATER RESOURCES FRESHWATER WETLANDS PROGRAM APPROVED WITH CONDITIONS AS SPECIFIED IN THE LETTER OF APPROVAL. DATED JUL 22 2014 FILE # 14-011. NO CHANGES ALLOWED WITHOUT PRIOR APPROVAL. APPROVED PLANS MUST BE AT CONSTRUCTION SITE. Charles H. Herbert

REVISIONS table with columns NO., DATE, BY. RHOODE ISLAND DEPARTMENT OF TRANSPORTATION BRIDGE RECONSTRUCTION SHIPPEE BRIDGE NO. 307 ROUTE 98 OVER NIPMUC RIVER BURRILLVILLE, RHOODE ISLAND STANDARD PLAN SYMBOLS & STANDARD LEGEND CHECKED BY DATE MAY 2014 SCALE NO SCALE

PRIME logo and address: 55 Capital Boulevard, Second Floor, Rocky Hill, CT 06067. P: 860 436 5600 F: 860 436 5601. 362 Vampirog Trail, East Providence, RI 02915. P: 401 233 2893 F: 401 383 0773

LIST OF ABBREVIATIONS

A
 ABUTMENT = ABUT.
 ALTERNATE = ALT.
 ANCHOR BOLT = A.B.
 APPROVED = APPD.
 APPROXIMATE = APPROX.
 AVERAGE = AVG.

B
 BEAM = BM.
 BACK TO BACK = B TO B
 BETWEEN = BTWN
 BEARING = BRG.
 BITUMINOUS = BIT.
 BUILDING = BLDG.
 BUILDING LINE = B.L.
 BOLT CIRCLE = B.C.
 BOTTOM = BOT.

C
 CENTER TO CENTER = C TO C
 CENTERLINE = C
 CIRCLE = CIR.
 CLEARANCE = CL.
 COLUMN = COL.
 CONCRETE = CONC.
 CONDUIT = COND.
 CONNECTION = CONN.
 CONSTRUCTION = CONST.
 CONTRACTION = CONTR.
 COUNTERSINK = CSK.
 COUPLING = CPLG.
 CLASS I CONTROLLED LOW STRENGTH MATERIAL = CLMS

D
 DETAIL = DET.
 DIAGONAL = DIAG.
 DIAPHRAGM = DIAPHM.
 DIAMETER = DIA.
 DIMENSION = DIM.
 DRAWING = DWG.
 DRAIN = DR.

E
 EACH = EA.
 EACH FACE = E.F.
 ELEVATION = EL.
 EXISTING = EXIST.
 EXPANSION = EXP.

F
 FAR FACE = F.F.
 FAR SIDE = F.S.
 FABRICATE = FAB.
 FACE TO FACE = F TO F
 FLANGE = FLG.
 FLAT HEAD = F.H.
 FOOTING = FTG.
 FOUNDATION = FDN.
 FURNISH, FABRICATE & ERECT = F.F. & E.

G
 GAGE = GA.
 GALVANIZE = GALV.
 GRADE = GR.
 GRATING = GRTG.
 GROUND = GND.

H
 HEIGHT = HGT.
 HEXAGON = HEX.
 HORIZONTAL = HORIZ.

I
 INCH = IN.
 INFORMATION = INFO.
 INSIDE DIAMETER = I.D.
 INVERT = INV.

J
 JOINT = JT.

L
 LENGTH = LGTH.
 LIGHTING = LTG.
 LONG = LG.
 LOAD & RESISTANCE FACTOR DESIGN = LRFD

M
 MATERIAL = MATL.
 MAXIMUM = MAX.
 MEAN HIGH WATER = M.H.W.
 MEAN SEA LEVEL = M.S.L.
 MINIMUM = MIN.
 MISCELLANEOUS = MISC.

N
 NEAR FACE = N.F.
 NEAR SIDE = N.S.
 NOT TO SCALE = N.T.S.
 NUMBER = NO.

O
 ON CENTER = O.C.
 OPENING = OPNG.
 OUTSIDE DIAMETER = O.D.
 OPTIONAL = OPT.

P
 PLATE = P.
 POINT OF VERTICAL CURVATURE = P.V.C.
 POINT OF VERTICAL TANGENCY = P.V.T.
 POLYVINYL CHLORIDE = PVC
 POINT OF TANGENCY = P.T.
 POUNDS PER SQUARE INCH = P.S.I.
 POUNDS PER SQUARE FOOT = P.S.F.

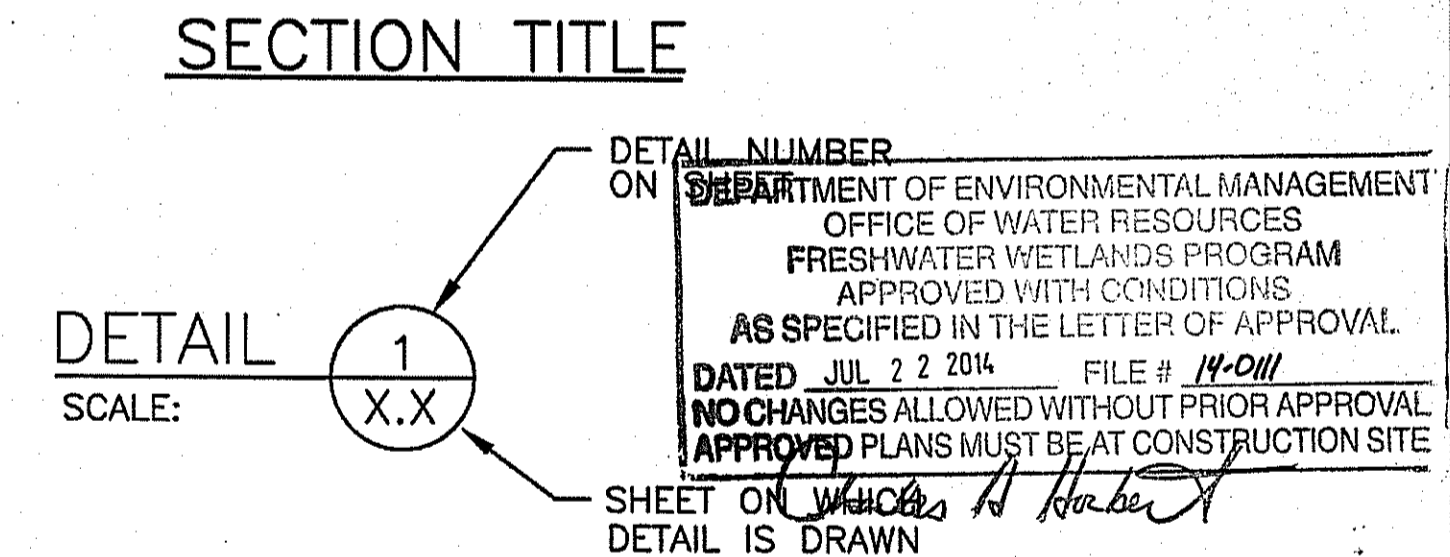
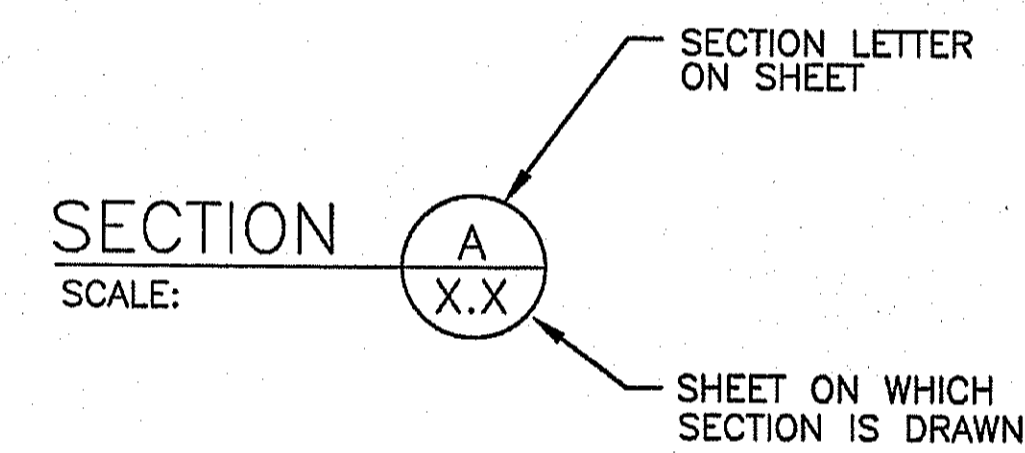
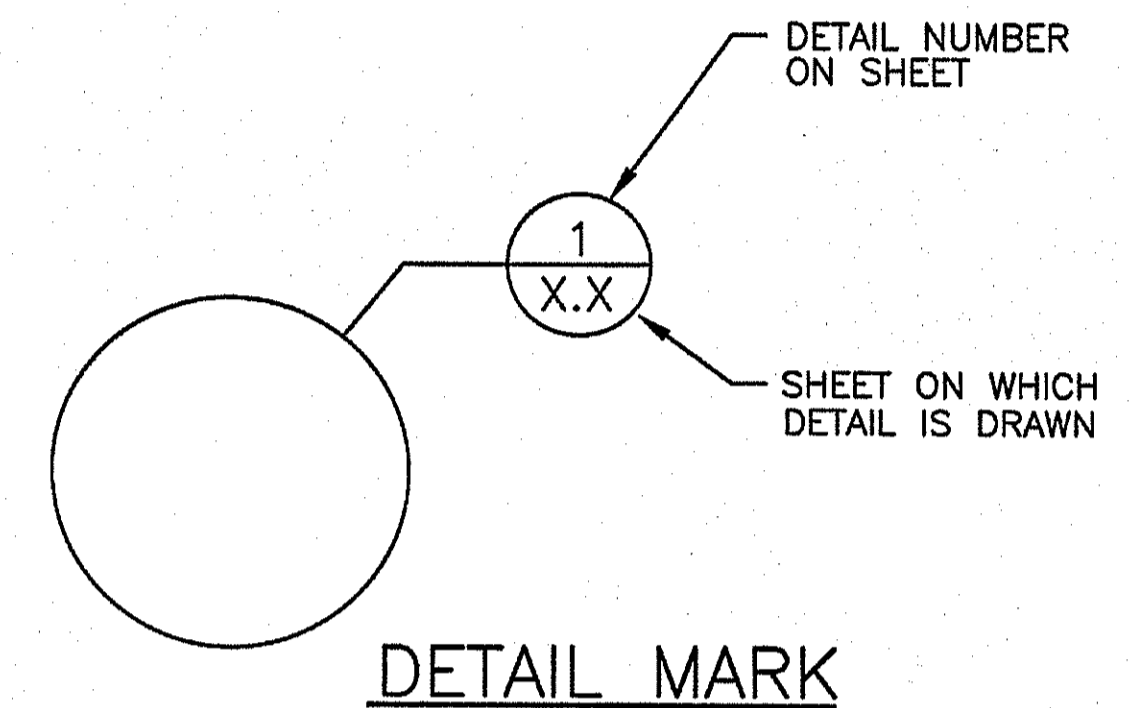
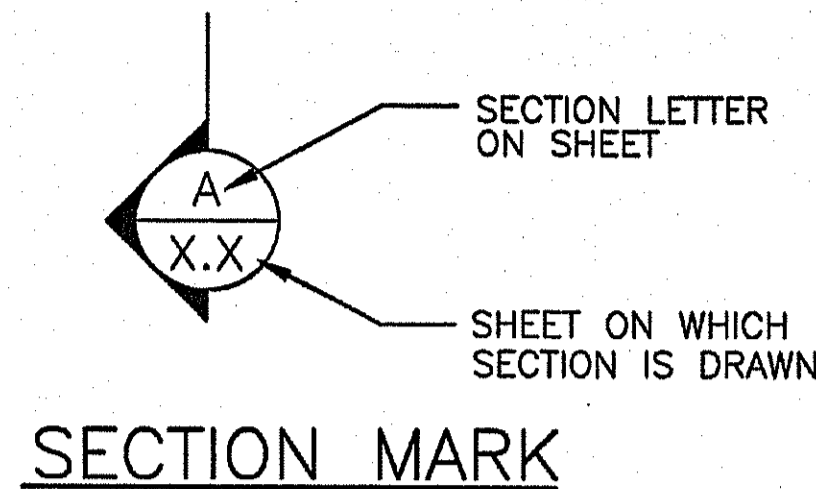
R
 RADIUS = RAD.
 RAILROAD = RR
 REQUIRED = REQD.
 REINFORCING = REINF.
 REHABILITATION = REHAB.
 REMOVE & DISPOSE = R & D

S
 SECTION = SECT.
 SCHEDULE = SCH.
 SCHEMATIC = SCHEM.
 SHEET = SH.
 SPACES = SP.
 STATION = STA.
 SYMMETRICAL = SYM.
 STAY IN PLACE = S.I.P.

T
 TOP = T
 TYPICAL = TYP.

V
 VARIES = VAR.
 VERTICAL CURVE = V.C.
 VERTICAL = VERT.

W
 WELDED WIRE FABRIC WITH = W.W.F.
 WIDE FLANGE = W/
 WORKING POINT = W.P.

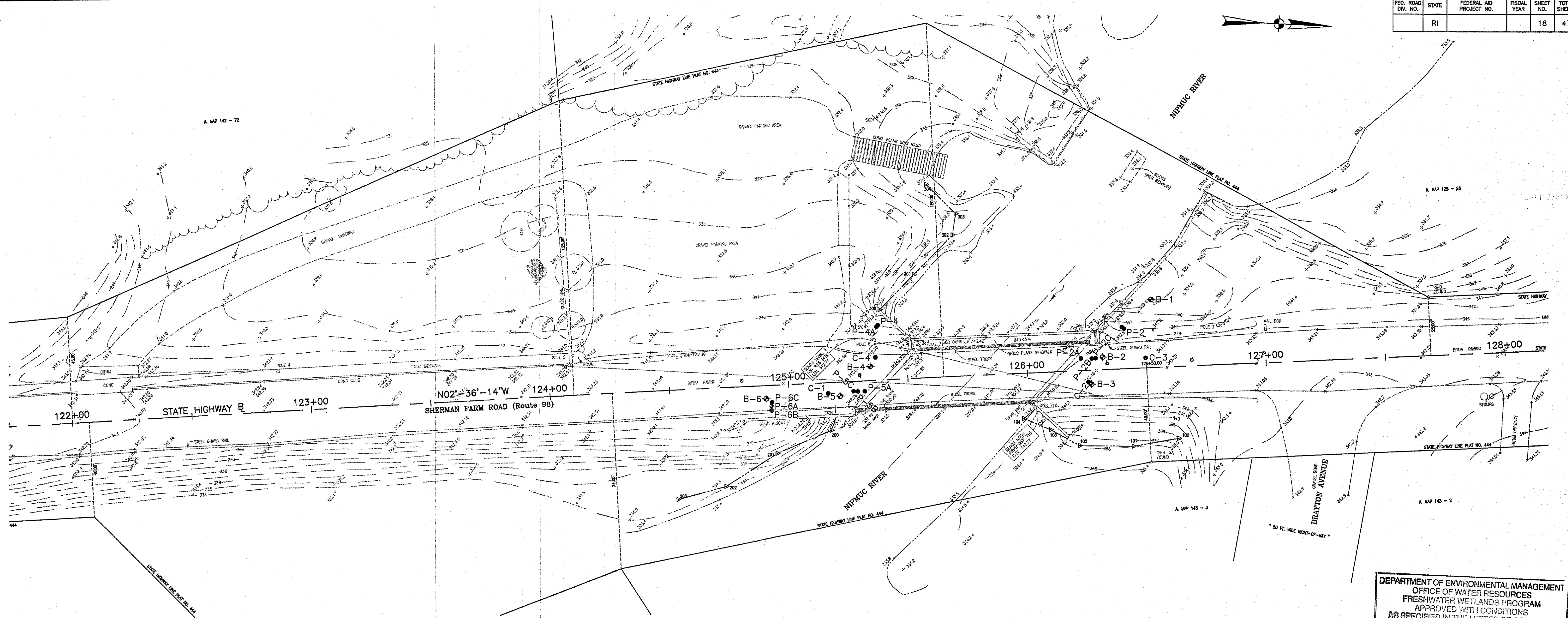


SECTION & DETAIL DESIGNATIONS

REVISIONS			RHODE ISLAND	
NO.	DATE	BY	DEPARTMENT OF TRANSPORTATION	
			BRIDGE RECONSTRUCTION	
			SHIPPEE BRIDGE NO. 307	
			ROUTE 98 OVER NIPMUC RIVER	
			BURRILLVILLE,	RHODE ISLAND
			LIST OF ABBREVIATIONS	
			CHECKED BY <u>PRIME</u> DATE <u>MAY 2014</u> SCALE <u> </u>	

PRIME AE
 PRIME AE Group, Inc.
 55 Capital Boulevard, Second Floor
 Rocky Hill, CT 06067
 P: 860 436 5600 F: 860 436 5601
 322 Wangsboro Trail
 East Providence, RI 02915
 P: 401 233 2993 F: 401 383 0773

Environmental Management
 JUN 11 2014
 Office of Water Resources



PLAN
SCALE: 1"=20'

BORING AND/OR PROBE LOCATION					
BORING AND/OR PROBE NO.	STATE HIGHWAY & STATION	OFFSET	GROUND ELEVATION	NORTHING	EASTING
B-1	STA. 126+53.17	29.1' L	EL. 339.30	323562.8	279522.6
B-2	STA. 126+31.79	5.4' L	EL. 343.12	323542.5	279547.3
B-3	STA. 126+26.68	5.9' R	EL. 343.11	323538.0	279558.8
B-4	STA. 125+34.43	6.1' L	EL. 342.92	323445.3	279551.0
B-5	STA. 125+21.28	5.9' R	EL. 342.87	323432.7	279563.6
B-6	STA. 124+90.28	5.6' R	EL. 342.96	323401.7	279564.6
P1A	STA. 126+40.40	17.8' L	N/A	323550.6	279534.4
P1B	STA. 126+41.24	17.0' L	N/A	323551.5	279535.2
P2A	STA. 126+22.67	5.2' L	EL. 342.98	323533.4	279547.8
P2B	STA. 126+27.19	5.0' L	EL. 343.02	323538.0	279547.9
P2C	STA. 126+28.79	5.0' L	EL. 343.06	323539.6	279547.8
P4	STA. 125+38.44	23.4' L	N/A	323448.5	279533.5
P4A	STA. 125+37.90	22.8' L	N/A	323448.0	279534.1
P5A	STA. 125+31.75	4.4' R	EL. 342.92	323443.1	279561.6
P5B	STA. 125+28.81	4.4' R	EL. 342.90	323440.1	279561.7
P5C	STA. 125+27.00	4.2' R	EL. 343.05	323438.3	279561.6
P6A	STA. 124+92.42	8.7' R	EL. 342.98	323404.0	279567.7
P6B	STA. 124+92.33	10.6' R	N/A	323404.0	279569.6
P6C	STA. 124+92.66	7.1' R	EL. 342.67	323404.1	279566.1

PAVEMENT CORE LOCATION				
CORE NO.	STATE HIGHWAY & STATION	OFFSET	NORTHING	EASTING
C-1	STA. 125+16.43	4.6' R	323427.8	279562.4
C-2	STA. 126+25.42	4.9' R	323536.6	279557.8
C-3	STA. 126+49.68	4.2' L	323560.5	279547.6
C-4	STA. 125+38.80	9.7' L	323447.5	279547.2

- BORING LEGEND:**
- ◆ B-# BORING LOCATION
 - P# PROBE LOCATION
 - C# PAVEMENT CORE LOCATION

DEPARTMENT OF ENVIRONMENTAL MANAGEMENT
OFFICE OF WATER RESOURCES
FRESHWATER WETLANDS PROGRAM
APPROVED WITH CONDITIONS
AS SPECIFIED IN THE LETTER OF APPROVAL
DATED JUL 22 2014 FILE # 14-011
NO CHANGES ALLOWED WITHOUT PRIOR APPROVAL
APPROVED PLANS MUST BE AT CONSTRUCTION SITE

Charles A. Hurd

REVISIONS		
NO.	DATE	BY

RHODE ISLAND
DEPARTMENT OF TRANSPORTATION

BRIDGE RECONSTRUCTION
SHIPPEE BRIDGE NO. 307
ROUTE 98 OVER NIPMUC RIVER
BURRELLVILLE, RHODE ISLAND

**BORING AND TEST PROBE
LOCATION PLAN**

CHECKED BY PRIME DATE MAY 2014 SCALE _____

PRIME AE
PRIME AE Group, Inc.

55 Capital Boulevard, Second Floor
Rocky Hill, CT 06067
P: 860 436 5500 F: 860 436 5501
352 Wamsanong Trail
East Providence, RI 02915
P: 401 233 2993 F: 401 383 0773

NEW HAMPSHIRE BORING, INC. 1215 W. CHESTNUT ST., BROOKTON, MA 02301		PROJECT Rte. 98 Bridge Over the Nipmuc River Albany & Associates, Inc. - 101 Commercial Way East Providence, RI 02914		REPORT OF BORING No. B-1 SHEET 1 OF 1 FILE No. 02917 CHKD. BY
FOREMAN: Charles O'Donnell CLASSIFIED BY: Brian Dealy INSPECTOR: Brian Dealy	BORING LOCATION Burrillville, RI - South Abutment GROUND SURFACE ELEVATION +339.9' DATUM DATE START 2/23/2005 DATE END 2/23/2005	BORING LOCATION Burrillville, RI - South Abutment GROUND SURFACE ELEVATION +343.9' DATUM DATE START 2/23/2005 DATE END 2/23/2005		
SAMPLER: UNLESS OTHERWISE NOTED, SAMPLER CONSISTS OF A 2" SPLIT SPOON DRIVEN USING A 140 lb. HAMMER FALLING 30 in.				
CASING: UNLESS OTHERWISE NOTED, CASING DRIVEN USING A 300 lb. HAMMER FALLING 24 in.				
CASING SIZE: HW OTHER:				
GROUNDWATER READINGS				
DATE TIME WATER CASING STABILIZATION TIME				
2/23/2005 8:27				
SAMPLE DESCRIPTION				
STRATUM DESCRIPTION				
1 P S1 2418 0.2-2 9.5 Medium dense, brown, fine to coarse SAND, little silt (FI)				
2 S 39-19				
3 H S2 2410 4-6 4.4 Loose, brown, fine to coarse SAND, little silt, trace gravel, metal (FI)				
4 S 5-8				
5 S 2416 8.5-11.5 47-59 Very dense, gray, fine to medium SAND, little silt, trace gravel				
6 S 65-66				
7 S 34 9/8 11.5'-12.3' 96 Very dense, gray, fine to coarse SAND, little silt, trace gravel				
8 S 100.9'				
9 S 2418 14-16 35-26 Very dense, gray, fine to medium SAND, little silt, trace gravel (TI)				
10 S 26-33				
11 S 2412 19-21 19-21 Dense, gray, fine to medium SAND, little silt, little gravel (TI)				
12 S 19-17				
13 S 3/3 21-21.3' 124.0' Weathered Rock				
14				
15				
16				
17				
18				
19				
20				
21				
22				
23				
24				
25				
26				
27				
28				
29				
30				
31				
32				
33				
34				
35				
36				
37				
38				
39				
40				
41				
42				
43				
44				
45				
46				
47				
48				
49				
50				
51				
52				
53				
54				
55				
56				
57				
58				
59				
60				
61				
62				
63				
64				
65				
66				
67				
68				
69				
70				
71				
72				
73				
74				
75				
76				
77				
78				
79				
80				
81				
82				
83				
84				
85				
86				
87				
88				
89				
90				
91				
92				
93				
94				
95				
96				
97				
98				
99				
100				
101				
102				
103				
104				
105				
106				
107				
108				
109				
110				
111				
112				
113				
114				
115				
116				
117				
118				
119				
120				
121				
122				
123				
124				
125				
126				
127				
128				
129				
130				
131				
132				
133				
134				
135				
136				
137				
138				
139				
140				
141				
142				
143				
144				
145				
146				
147				
148				
149				
150				
151				
152				
153				
154				
155				
156				
157				
158				
159				
160				
161				
162				
163				
164				
165				
166				
167				
168				
169				
170				
171				
172				
173				
174				
175				
176				
177				
178				
179				
180				
181				
182				
183				
184				
185				
186				
187				
188				
189				
190				
191				
192				
193				
194				
195				
196				
197				
198				
199				
200				
201				
202				
203				
204				
205				
206				
207				
208				
209				
210				
211				
212				
213				
214				
215				
216				
217				
218				
219				
220				
221				
222				
223				
224				
225				
226				
227				
228				
229				
230				
231				
232				
233				
234				
235				
236				
237				
238				
239				
240				
241				
242				
243				
244				
245				
246				
247				
248				
249				
250				
251				
252				
253				
254				
255				
256				
257				
258				
259				
260				
261				
262				
263				
264				
265				
266				
267				
268				
269				
270				
271				
272				
273				
274				
275				
276				
277				
278				
279				
280				
281				
282				
283				
284				
285				
286				
287				
288				
289				
290				
291				
292				
293				
294				
295				
296				
297				
298				
299				
300				
301				
302				
303				
304				
305				
306				
307				
308				
309				
310				
311				
312				
313				
314				
315				
316				
317				
318				
319				
320				
321				
322				
323				
324				
325				
326				
327				
328				
329				
330				
331				
332				
333				
334				
335				
336				
337				
338				
339				
340				
341				
342				
343				
344				
345				
346				
347				
348				
349				
350				
351				
352				
353				
354				
355				
356				
357				
358				
359				
360				
361				
362				
363				
364				
365				
366				
367				
368				
369				
370				
371				
372				
373				
374				
375				
376				
377				
378				
379				
380				
381				
382				
383				
384				
385				
386				
387				
388				
389				
390				
391				
392				
393				
394				
395				
396				
397				
398				
399				
400				
401				
402				
403				
404				
405				
406				
407				
408				
409				
410				
411				
412				
413				
414				
415				
416				
417				
418				
419				
420				
421				
422				
423				
424				
425				
426				
427				
428				
429				
430				
431				
432				
433				
434				
435				
436				
437				
438				
439				
440				
441				
442				
443				
444				
445				
446				
447				
448				
449				
450				
451				
452				
453				
454				
455				
456				
457				
458				
459				
460				
461				
462				
463				
464				
465				
466				
467				
468				
469				
470				
471				
472				
473				
474				
475				
476				
477				
478				
479				
480				
481				
482				
483				
484				
485				
486				
487				
488				
489				
490				
491				
492				
493				
494				
495				
496				
497				
498				
499				
500				
501				
502				
503				
504				
505				
506				
507				
508				
509				
510				
511				
512				
513				
514				
515				
516				
517				
518				
519				
520				
521				
522				
523				
524				
525				
526				
527				
528				
529				
530				
531				
532				
533				
534				
535				
536				
537				
538				
539				
540				
541				
542				
543				
544				
545				
546				
547				
548				
549				
550				
551				
552				
553				
554				
555				
556				
557				
558				
559				
560				
561				
562				
563				
564				
565				
566				
567				
568				
569				
570				
571				
572				
573				
574				
575				
576				
577				
578				
579				
580				
581				
582				
583				
584				
585				
586				
587				
588				
589				
590				
591				
592				
593				
594				
595				
596				
597				
598				
599				
600				
601				
602				
603				
60				

