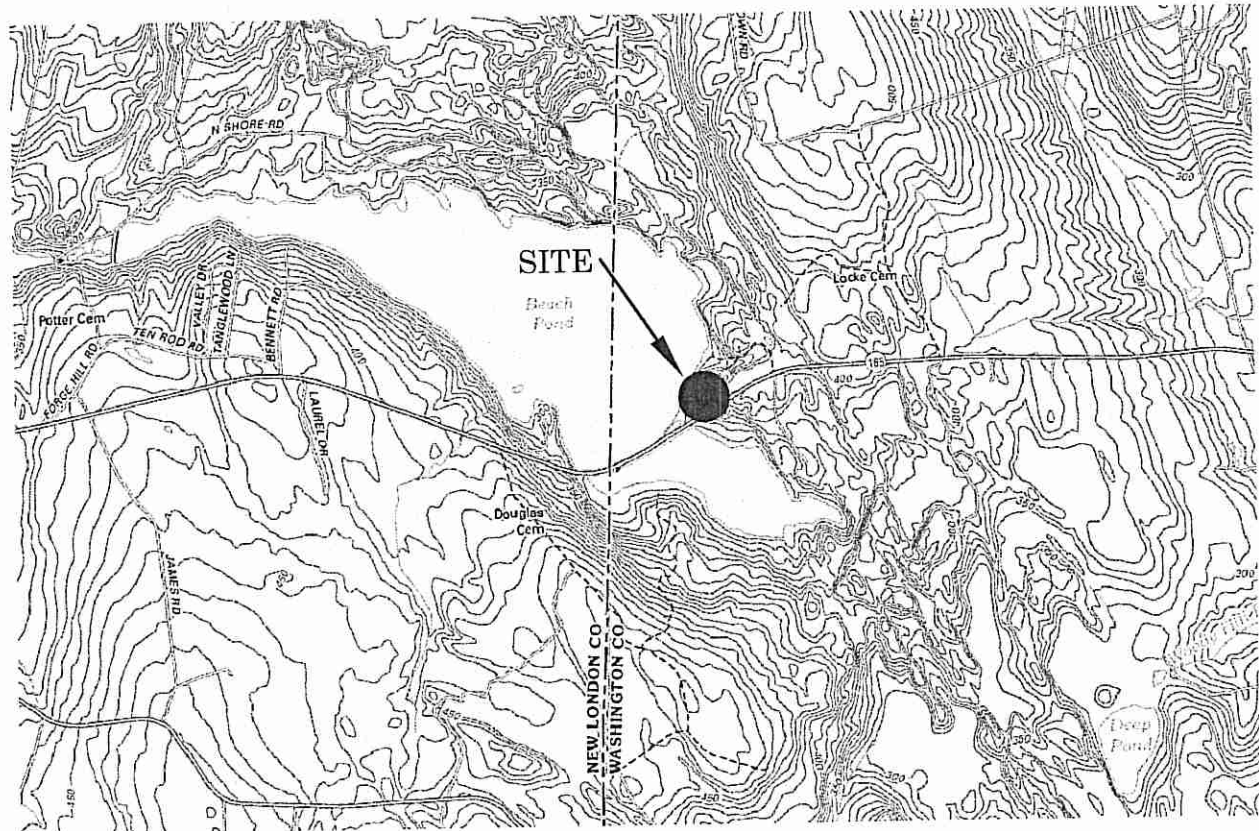


PROJECT

DEPARTMENT OF ENVIRONMENTAL MANAGEMENT
 OFFICE OF WATER RESOURCES
 FRESH-WATER WETLANDS PROGRAM
 APPROVED WITH CONDITIONS
 AS SPECIFIED IN THE LETTER OF APPROVAL
 APR 20 2015 FILE # 15-0040
 CHANGES ALLOWED WITHOUT PRIOR APPROVAL
 APPROVED PLANS MUST BE AT ALL TIMES IN ACCORDANCE WITH THE LETTER OF APPROVAL

Ch. H. H. H.

Environmental Management
 MAR 19 2015
 Office of Water Resources



RI DEM DIVISION
 OF PLANNING &
 DEVELOPMENT
 235 PROMENADE
 ST. PROVIDENCE,
 RI 401-222-2776

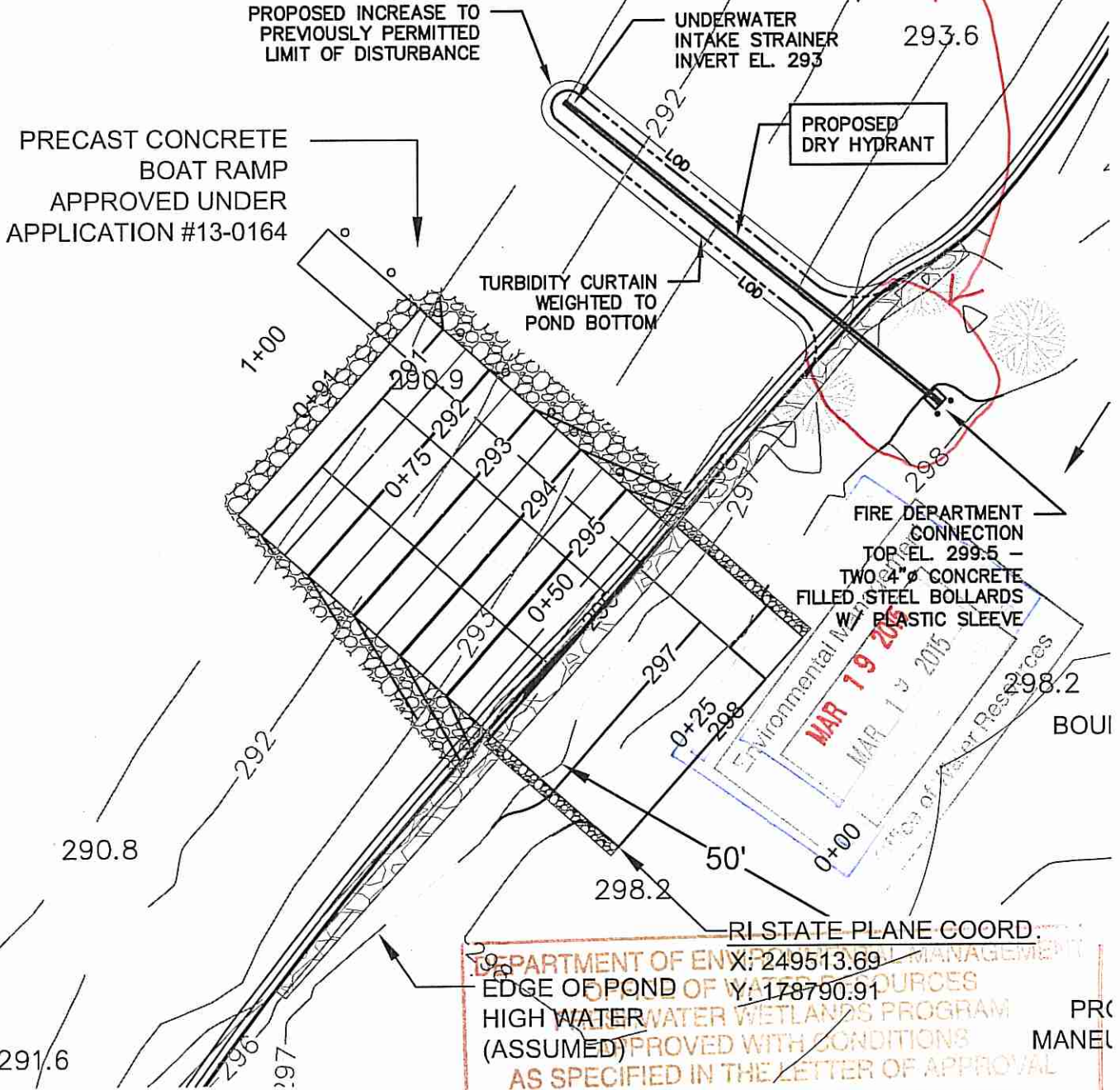
PROPOSED DRY HYDRANT
 BEACH POND, EXETER
 P&D 11-14

DRAWN BY: AFA
 SCALE: NOT TO SCALE
 DATE: MARCH, 2015

LOCUS AND LOCATION MAP

MAP
 SHEET 1 OF 3

Limit of Disturbance as Revised per RIDEM



NOTE: ALL AREAS DISTURBED DURING DRY HYDRANT CONSTRUCTION SHALL BE RESTORED AND SEEDED AS INDICATED IN THE SPECIFICATIONS.

DEPARTMENT OF ENVIRONMENTAL MANAGEMENT
 RI STATE PLANE COORD.
 X: 249513.69
 Y: 178790.91
 EDGE OF POND OF WATER RESOURCES
 HIGH WATER WETLANDS PROGRAM
 (ASSUMED) APPROVED WITH CONDITIONS
 AS SPECIFIED IN THE LETTER OF APPROVAL
 DATED APR 20 2015 FILE # 15-0640
 APPROVED PLANS MUST BE AT ALL TIMES ON SITE



RI DEM DIVISION
 OF PLANNING &
 DEVELOPMENT
 235 PROMENADE
 ST. PROVIDENCE,
 RI 401-222-2776

PROPOSED DRY HYDRANT
 BEACH POND, EXETER
 P&D 11-14

DRAWN BY: AFA

SCALE: 1"=20'

DATE: MARCH, 2015

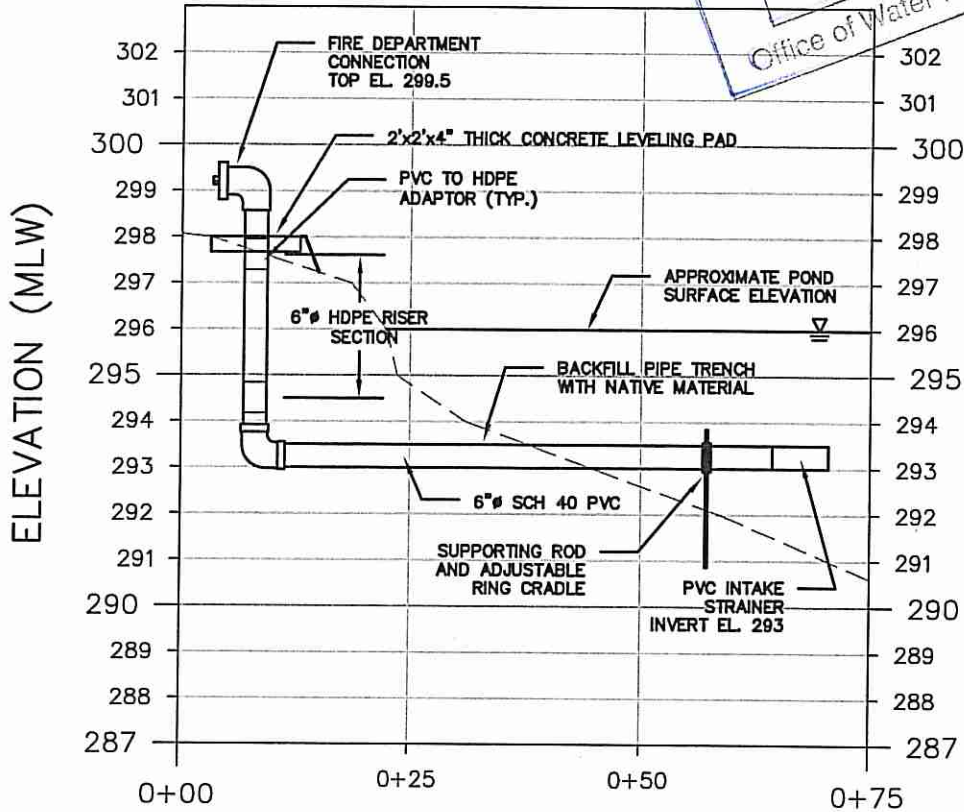
DRY HYDRANT LOCATION PLAN

SK-1

SHEET 2 OF 3

Environmental Management
MAR 19 2015
 Office of Water Resources

PROPOSED DRY HYDRANT
 PROFILE



DISTANCE (FT)
 SCALE 1"=20' HORIZONTAL
 SCALE 1"=4' VERTICAL

DEPARTMENT OF ENVIRONMENTAL MANAGEMENT
 OFFICE OF WATER RESOURCES
 FRESHWATER WETLANDS PROGRAM
 APPROVED WITH CONDITIONS
 AS SPECIFIED IN THE LETTER OF APPROVAL
 DATED **1 APR 20 2015** FILE # **15-0040**
 NO CHANGES ALLOWED WITHOUT PRIOR APPROVAL
 APPROVED PLANS MUST BE AT CONSTRUCTION SITE

NOTE: PIPE COMPONENTS ENLARGED FOR CLARITY



RI DEM DIVISION
 OF PLANNING &
 DEVELOPMENT
 235 PROMENADE
 ST. PROVIDENCE,
 RI 401-222-2776

PROPOSED DRY HYDRANT
 BEACH POND, EXETER
 P&D 11-14

DRAWN BY: *[Signature]*
 SCALE: AS NOTED
 DATE: MARCH, 2015

DRY HYDRANT PROFILE

SK-2

SHEET 3 OF 3