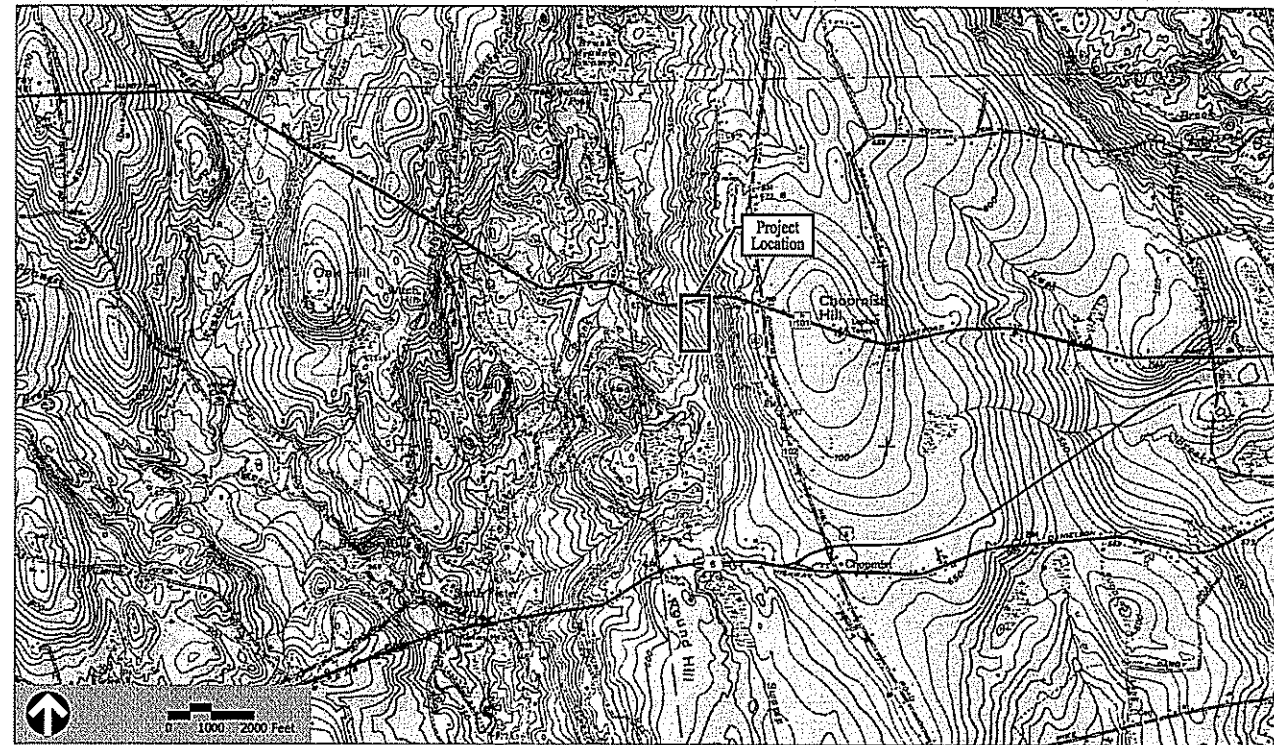


Plans

Issued for	Review
Date Issued	March 11, 2015
Latest Issue	March 11, 2015

The Narragansett Electric Company Proposed Distribution Line Relocation Project

Scituate, Rhode Island



10 Dorrance Street
Suite 400
Providence, RI 02903
401.272.8100

Owner

The Narragansett Electric Company
280 Melrose Street
Providence, Rhode Island 02907
401-784-7490

Assessor's Map: 27
Lot: 2

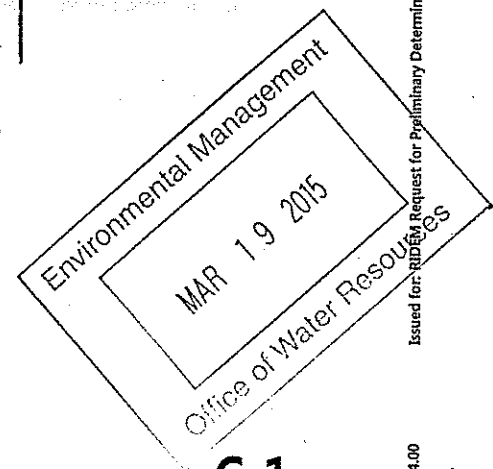
Sheet Index

No.	Drawing Title	Latest Issue
C-1	Cover	March 11, 2015
C-2	General Notes and Details	March 11, 2015
C-3	Soil Erosion and Sediment Control Plan	March 11, 2015

DEPARTMENT OF ENVIRONMENTAL MANAGEMENT
OFFICE OF WATER RESOURCES
FRESHWATER WETLANDS PROGRAM
APPROVED WITH CONDITIONS
AS SPECIFIED IN THE LETTER OF APPROVAL
DATED MAY 13 2015 FILE # 15-0045
NO CHANGES ALLOWED WITHOUT PRIOR APPROVAL
APPROVED PLANS MUST BE AT CONSTRUCTION SITE

Matthew D. Woodcock

Kindly be advised that this
Permit is not equivalent to a
verification of the type or extent
of freshwater wetlands on site.



C-1

Notes

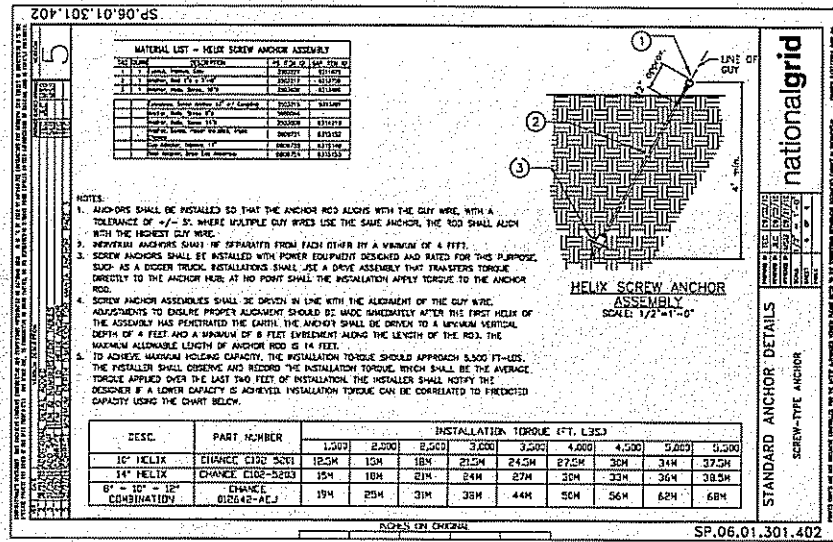
EXISTING CONDITIONS INFORMATION:

REFERENCES:

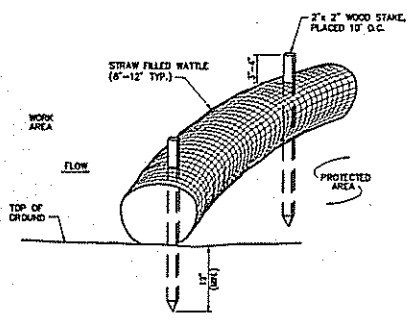
- INTERSECTION OF CARUE DRIVE AND HARTFORD PIKE IS LOCATED APPROXIMATELY 1000 FEET EAST OF THE PROJECT SITE.
- WETLAND BOUNDARY DELINEATION WAS PERFORMED BY VANASSE HANGEN BRUSTLIN, INC., (VHB) PROVIDENCE, RI. FLAG LOCATIONS WERE LOCATED BY A GLOBAL POSITIONING SYSTEM (GPS) FIELD SURVEY CONDUCTED BY VHB IN OCTOBER 2014. THIS SURVEY CONFORMS TO A CLASS IV STANDARD AS DEFINED IN THE PROCEDURAL AND TECHNICAL STANDARDS FOR PERFORMING LAND SURVEYING IN THE STATE OF RHODE ISLAND AND PROVIDENCE PLANTATIONS.

EROSION AND SEDIMENT CONTROL NOTES:

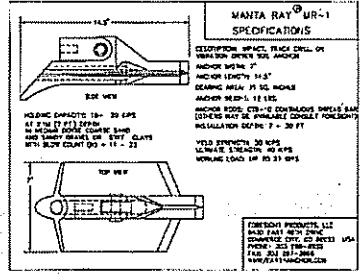
- PRIOR TO STARTING ANY SITE WORK, THE CONTRACTOR SHALL NOTIFY APPROPRIATE AGENCIES AND SHALL INSTALL EROSION CONTROL MEASURES AS SHOWN ON THE PLANS AND AS IDENTIFIED IN FEDERAL, STATE AND LOCAL APPROVAL DOCUMENTS PERTAINING TO THIS PROJECT.
- A SOIL EROSION AND SEDIMENTATION CONTROL PLAN HAS BEEN DESIGNED TO PROTECT ON-SITE WETLANDS AND WATERCOURSES AND OFF-SITE AREAS DURING AND AFTER CONSTRUCTION, IN AREAS WHERE ACCESS IS THROUGH WETLAND AREAS, TEMPORARY SWAMP MATS WILL BE PLACED.
- IN AREAS WHERE HIGH RUNOFF VELOCITIES OR HIGH SEDIMENT LOADS ARE EXPECTED, STRAW WATTLES WILL BE BACKED WITH SILT FENCING.
- IF GROUNDWATER IS ENCOUNTERED DURING EXCAVATION, A TEMPORARY DEWATERING BASIN OR FILTER BAG WILL BE UTILIZED PROXIMATE TO THE WORK AREA OUTSIDE OF WETLANDS WHENEVER POSSIBLE TO DETAIN AND FILTER TURBID PUMP DISCHARGES.
- ONCE WORK IS COMPLETE, FINAL SURFACE TREATMENT CONSISTING OF STRAW OR CELLULOSE MULCH WILL BE APPLIED TO STABILIZE ANY DISTURBED AREAS. ANY SOIL DISTURBANCE ASSOCIATED WITH EQUIPMENT ACCESS TO STRUCTURES OR STRUCTURE EXCAVATIONS SHOULD BE MULCHED WITH STRAW AT A RATE OF 100 POUNDS PER 1000 SQUARE FEET ON ALL DISTURBED AREAS AS SOON AS POSSIBLE BUT NOT MORE THAN 14 DAYS AFTER THE CONSTRUCTION ACTIVITY IN THAT AREA HAS TEMPORARILY OR PERMANENTLY CEASED.
- IN ACCORDANCE WITH THE RIPDES GENERAL PERMIT, ALL STORMWATER CONTROL MEASURES, DISTURBED AREAS, AREAS USED FOR THE STORAGE OF MATERIALS THAT ARE EXPOSED TO PRECIPITATION (INCLUDING UNSTABILIZED SOIL STOCKPILES), DISCHARGE LOCATIONS AND LOCATIONS WHERE VEHICLES ENTER OR EXIT THE SITE, AS OUTLINED IN PART IV OF THIS PERMIT, MUST BE INSPECTED BY OR UNDER THE SUPERVISION OF THE APPLICANT AT LEAST ONCE EVERY SEVEN (7) CALENDAR DAYS AND WITHIN TWENTY-FOUR (24) HOURS AFTER ANY STORM EVENT WHICH GENERATES AT LEAST 0.25 INCHES OF RAINFALL PER TWENTY-FOUR (24) HOUR PERIOD AND/OR AFTER A SIGNIFICANT AMOUNT OF RUNOFF. SUCH AREAS SHALL BE INSPECTED FOR EVIDENCE OF, OR THE POTENTIAL FOR, POLLUTANTS ENTERING THE WATERS OF THE STATE OR A SEPARATE STORM SEWER SYSTEM. ALL BMPs SHALL BE MAINTAINED TO PREVENT UNCONTROLLED RELEASES OF MEASURABLE AMOUNTS OF SEDIMENT OR SEDIMENT LADEN WATER FROM TRAVELING BEYOND THE LIMITS OF DISTURBANCE.
- SEDIMENT SHALL BE REMOVED FROM BEHIND BARRIERS IF GREATER THAN 6 INCHES DEEP OR AS NEEDED.
- DAMAGED OR DETERIORATED EROSION/SEDIMENTATION CONTROL ITEMS WILL BE REPAIRED IMMEDIATELY AFTER IDENTIFICATION.
- EROSION CONTROL MEASURES SHALL REMAIN IN PLACE UNTIL ALL DISTURBED EARTH HAS BEEN SECURELY STABILIZED. ONCE THE SITE IS STABILIZED, THE HAY BALES WILL BE REMOVED OR BROKEN UP AND SPREAD AS MULCH. ALL OTHER CONTROLS SHALL BE REMOVED AND PROPERLY DISPOSED OF BY THE CONTRACTOR.
- IN THE EVENT OF A FUEL SPILL OR EQUIPMENT MALFUNCTION RESULTING IN A RELEASE OF HAZARDOUS MATERIAL, ALL WORK WILL BE STOPPED IN THIS AREA UNTIL THE RELEASE/SPILL IS CLEANED UP.
- EQUIPMENT USED FOR CONSTRUCTION WILL BE PROPERLY MAINTAINED AND OPERATED TO REDUCE THE CHANCES OF SPILL OCCURRENCES OF PETROLEUM PRODUCTS. REFUELING OF EQUIPMENT WILL BE REQUIRED TO CARRY SPILL CONTAINMENT AND PREVENTION DEVICES (I.E., ABSORBENT PADS, CLEAN UP RAGS, FIVE GALLON CONTAINERS, ABSORBENT MATERIAL, ETC.) AT ALL TIMES. IN ADDITION, MAINTENANCE EQUIPMENT AND REPLACEMENT PARTS FOR CONSTRUCTION EQUIPMENT WILL BE ON HAND TO REPAIR FAILURES AND STOP A SPILL IN THE EVENT OF EQUIPMENT MALFUNCTION.
- ANY HAZARDOUS WASTE SPILLS SHALL BE CLEANED UP IMMEDIATELY, AND IF THE SPILL AMOUNT IS EQUAL TO OR EXCEEDS THE EPA REPORTABLE QUANTITY (RQ) FOR THAT SUBSTANCE IN ACCORDANCE WITH 40 CFR PARTS 101.117, OR 302, THE CONTRACTOR SHALL IMMEDIATELY CONTACT THE NATIONAL RESPONSE CENTER AT 1-800-424-8802. THE CONTRACTOR WILL ALSO BE RESPONSIBLE FOR SUBMITTING IN WRITING A DESCRIPTION OF THE RELEASE TO THE EPA REGIONAL OFFICE AND RIDEM PROVIDING THE DATE AND CIRCUMSTANCES OF THE RELEASE AND THE STEPS TO BE TAKEN TO PREVENT ANOTHER RELEASE. DIRECTIONS FOR CLEANING UP SPILLS SHALL BE CLEARLY POSTED AT A DESIGNATED ON-SITE LOCATION, AND CONSTRUCTION PERSONNEL SHALL BE MADE AWARE OF THE PROCEDURES AND LOCATION OF CLEANUP SUPPLIES. PERSONNEL SHALL WEAR APPROPRIATE PROTECTIVE GEAR AND HAVE PROPER TRAINING TO PREVENT INJURY FROM CONTACT WITH ANY HAZARDOUS SUBSTANCES.
- NO GRADE CHANGES ARE PROPOSED WITHIN STATE-REGULATED FRESHWATER WETLANDS.



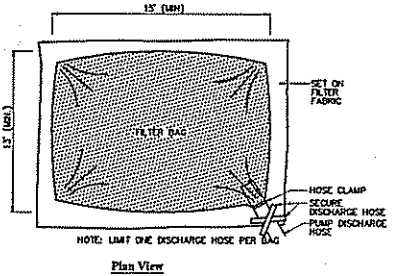
Screw-Type Anchor Standard Detail
N.T.S. Source: National Grid 7/12



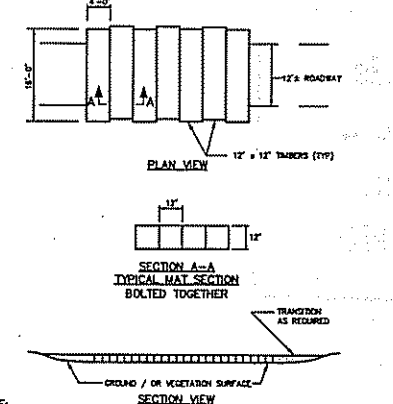
Straw Wattle - Erosion Control Barrier
N.T.S. Source: vhb 8/12



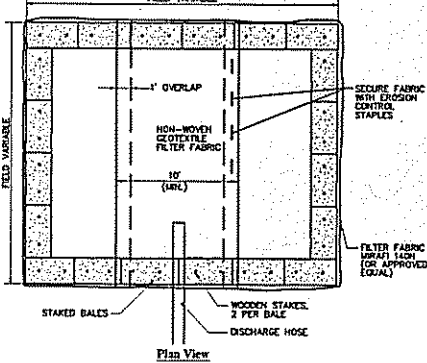
Manta Ray MR-1 Anchor
N.T.S. Source: vhb 8/12



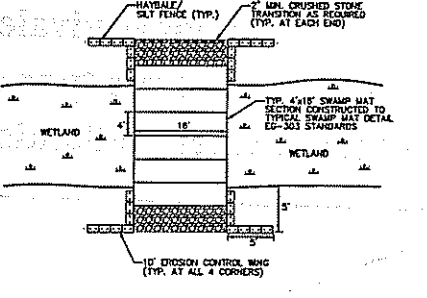
Dewatering Filter Bag
N.T.S. Source: vhb 6/29



Swamp Mat Detail
N.T.S. Source: The Narragansett Electric Company



Dewatering Straw Bale Basin
N.T.S. Source: vhb 7/11



Swamp Mat Layout (with Transition and BMPs)
N.T.S. Source: vhb 7/11

The Narragansett Electric Company Proposed Distribution Line Relocation Project

AP 27 Lot 2
Scituate, Rhode Island

No.	Revision	Date	App'd.

Designed by: _____
 Checked by: _____
 Drawn by: _____
 RIDE M Request for Preliminary Determination Not Approved for Construction
 Date: March 11, 2015
General Notes and Details



10 Dorrance Street
Suite 400
Providence, RI 02903
401.272.8100

Kindly be advised that this Permit is not equivalent to a verification of the type or extent of freshwater wetlands on site.

Notes

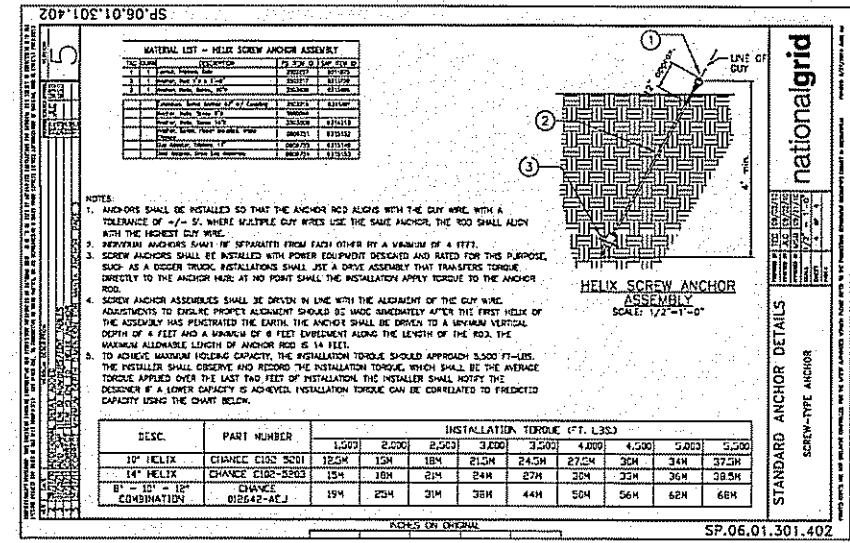
EXISTING CONDITIONS INFORMATION:

REFERENCES:

- INTERSECTION OF CARUE DRIVE AND HARTFORD PIKE IS LOCATED APPROXIMATELY 1000 FEET EAST OF THE PROJECT SITE.
- WETLAND BOUNDARY DELINEATION WAS PERFORMED BY VANASSE HANGEN BRUSTLIN, INC. (VHB) PROVIDENCE, RI. FLAG LOCATIONS WERE LOCATED BY A GLOBAL POSITIONING SYSTEM (GPS) FIELD SURVEY CONDUCTED BY VHB IN OCTOBER 2014. THIS SURVEY CONFORMS TO A CLASS IV STANDARD AS DEFINED IN THE PROCEDURAL AND TECHNICAL STANDARDS FOR PERFORMING LAND SURVEYING IN THE STATE OF RHODE ISLAND AND PROVIDENCE PLANTATIONS.

EROSION AND SEDIMENT CONTROL NOTES:

- PRIOR TO STARTING ANY SITE WORK, THE CONTRACTOR SHALL NOTIFY APPROPRIATE AGENCIES AND SHALL INSTALL EROSION CONTROL MEASURES AS SHOWN ON THE PLANS AND AS IDENTIFIED IN FEDERAL, STATE AND LOCAL APPROVAL DOCUMENTS PERTAINING TO THIS PROJECT.
- A SOIL EROSION AND SEDIMENTATION CONTROL PLAN HAS BEEN DESIGNED TO PROTECT ON-SITE WETLANDS AND WATERCOURSES AND OFF-SITE AREAS DURING AND AFTER CONSTRUCTION. IN AREAS WHERE ACCESS IS THROUGH WETLAND AREAS, TEMPORARY SWAMP MATS WILL BE PLACED.
- IN AREAS WHERE HIGH RUNOFF VELOCITIES OR HIGH SEDIMENT LOADS ARE EXPECTED, STRAW WATTLES WILL BE BACKED WITH SILT FENCING.
- IF GROUNDWATER IS ENCOUNTERED DURING EXCAVATION, A TEMPORARY DEWATERING BASIN OR FILTER BAG WILL BE UTILIZED PROXIMATE TO THE WORK AREA OUTSIDE OF WETLANDS WHENEVER POSSIBLE TO DETAIN AND FILTER TURBID PUMP DISCHARGES.
- ONCE WORK IS COMPLETE, FINAL SURFACE TREATMENT CONSISTING OF STRAW OR CELLULOSE MULCH WILL BE APPLIED TO STABILIZE ANY DISTURBED AREAS. ANY SOIL DISTURBANCE ASSOCIATED WITH EQUIPMENT ACCESS TO STRUCTURES OR STRUCTURE EXCAVATIONS SHOULD BE MULCHED WITH STRAW AT A RATE OF 100 POUNDS PER 1000 SQUARE FEET ON ALL DISTURBED AREAS AS SOON AS POSSIBLE BUT NOT MORE THAN 14 DAYS AFTER THE CONSTRUCTION ACTIVITY IN THAT AREA HAS TEMPORARILY OR PERMANENTLY CEASED.
- IN ACCORDANCE WITH THE RIDDES GENERAL PERMIT, ALL STORMWATER CONTROL MEASURES, DISTURBED AREAS, AREAS USED FOR THE STORAGE OF MATERIALS THAT ARE EXPOSED TO PRECIPITATION (INCLUDING UNSTABILIZED SOIL STOCKPILES), DISCHARGE LOCATIONS AND LOCATIONS WHERE VEHICLES ENTER OR EXIT THE SITE, AS OUTLINED IN PART IV OF THIS PERMIT, MUST BE INSPECTED BY OR UNDER THE SUPERVISION OF THE APPLICANT AT LEAST ONCE EVERY SEVEN (7) CALENDAR DAYS AND WITHIN TWENTY-FOUR (24) HOURS AFTER ANY STORM EVENT WHICH GENERATES AT LEAST 0.25 INCHES OF RAINFALL PER TWENTY-FOUR (24) HOUR PERIOD AND/OR AFTER A SIGNIFICANT AMOUNT OF RUNOFF. SUCH AREAS SHALL BE INSPECTED FOR EVIDENCE OF, OR THE POTENTIAL FOR, POLLUTANTS ENTERING THE WATERS OF THE STATE OR A SEPARATE STORM SEWER SYSTEM. ALL BMPs SHALL BE MAINTAINED TO PREVENT UNCONTROLLED RELEASES OF MEASURABLE AMOUNTS OF SEDIMENT OR SEDIMENT LADEN WATER FROM TRAVELING BEYOND THE LIMITS OF DISTURBANCE.
- SEDIMENT SHALL BE REMOVED FROM BEHIND BARRIERS IF GREATER THAN 6 INCHES DEEP OR AS NEEDED.
- DAMAGED OR DETERIORATED EROSION/SEDIMENTATION CONTROL ITEMS WILL BE REPAIRED IMMEDIATELY AFTER IDENTIFICATION.
- EROSION CONTROL MEASURES SHALL REMAIN IN PLACE UNTIL ALL DISTURBED EARTH HAS BEEN SECURELY STABILIZED. ONCE THE SITE IS STABILIZED, THE HAY BALES WILL BE REMOVED OR BROKEN UP AND SPREAD AS MULCH. ALL OTHER CONTROLS SHALL BE REMOVED AND PROPERLY DISPOSED OF BY THE CONTRACTOR.
- IN THE EVENT OF A FUEL SPILL OR EQUIPMENT MALFUNCTION RESULTING IN A RELEASE OF HAZARDOUS MATERIAL, ALL WORK WILL BE STOPPED IN THIS AREA UNTIL THE RELEASE/SPILL IS CLEANED UP.
- EQUIPMENT USED FOR CONSTRUCTION WILL BE PROPERLY MAINTAINED AND OPERATED TO REDUCE THE CHANCES OF SPILL OCCURRENCES OF PETROLEUM PRODUCTS. REFUELING OF EQUIPMENT WILL BE REQUIRED TO CARRY SPILL CONTAINMENT AND PREVENTION DEVICES (I.E., ABSORBENT PADS, CLEAN UP RAGS, FIVE GALLON CONTAINERS, ABSORBENT MATERIAL, ETC.) AT ALL TIMES. IN ADDITION, MAINTENANCE EQUIPMENT AND REPLACEMENT PARTS FOR CONSTRUCTION EQUIPMENT WILL BE ON HAND TO REPAIR FAILURES AND STOP A SPILL IN THE EVENT OF EQUIPMENT MALFUNCTION.
- ANY HAZARDOUS WASTE SPILLS SHALL BE CLEANED UP IMMEDIATELY, AND IF THE SPILL AMOUNT IS EQUAL TO OR EXCEEDS THE EPA REPORTABLE QUANTITY (RQ) FOR THAT SUBSTANCE IN ACCORDANCE WITH 40 CFR PARTS 1010, 117, OR 302, THE CONTRACTOR SHALL IMMEDIATELY CONTACT THE NATIONAL RESPONSE CENTER AT 1-800-424-8802. THE CONTRACTOR WILL ALSO BE RESPONSIBLE FOR SUBMITTING IN WRITING A DESCRIPTION OF THE RELEASE TO THE EPA REGIONAL OFFICE AND RIDEM PROVIDING THE DATE AND CIRCUMSTANCES OF THE RELEASE AND THE STEPS TO BE TAKEN TO PREVENT ANOTHER RELEASE. DIRECTIONS FOR CLEANING UP SPILLS SHALL BE CLEARLY POSTED AT A DESIGNATED ON-SITE LOCATION, AND CONSTRUCTION PERSONNEL SHALL BE MADE AWARE OF THE PROCEDURES AND LOCATION OF CLEANUP SUPPLIES. PERSONNEL SHALL WEAR APPROPRIATE PROTECTIVE GEAR AND HAVE PROPER TRAINING TO PREVENT INJURY FROM CONTACT WITH ANY HAZARDOUS SUBSTANCES.
- NO GRADE CHANGES ARE PROPOSED WITHIN STATE-REGULATED FRESHWATER WETLANDS.

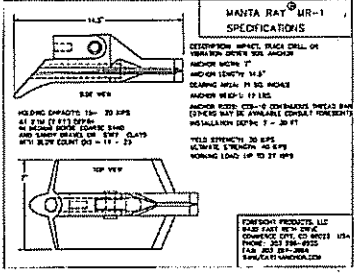
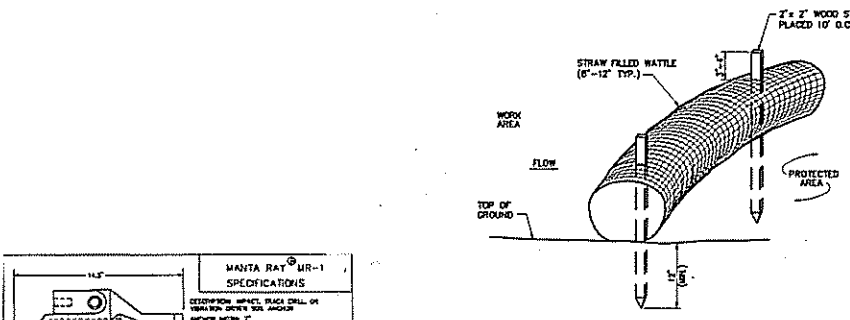


Screw-Type Anchor Standard Detail

N.T.S.

Source: National Grid

2/15



Manta Ray MR-1 Anchor

N.T.S.

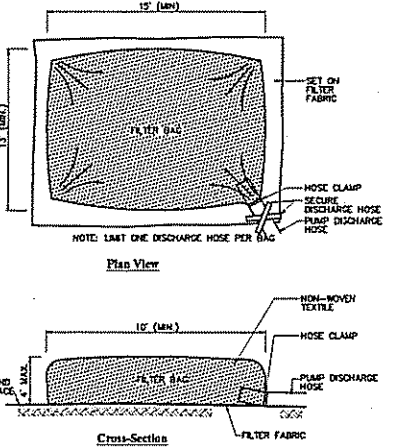
Straw Wattle - Erosion Control Barrier

N.T.S.

Source: VHB

6/12

LD, 433



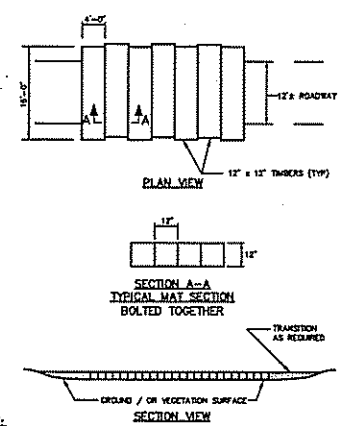
Dewatering Filter Bag

N.T.S.

Source: VHB

6/24

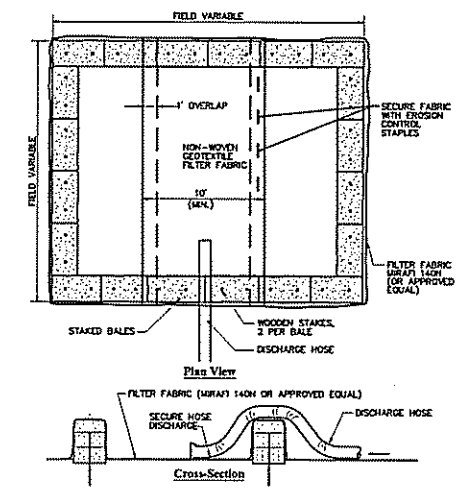
LD, 431



Swamp Mat Detail

N.T.S.

Source: The Narragansett Electric Company



Dewatering Straw Bale Basin

N.T.S.

Source: VHB

2/11

LD, 430

DEPARTMENT OF ENVIRONMENTAL MANAGEMENT
OFFICE OF WATER RESOURCES
FRESHWATER WETLANDS PROGRAM
APPROVED WITH CONDITIONS
AS SPECIFIED IN THE LETTER OF APPROVAL
DATED MAY 13 2015 FILE # 15-0045
NO CHANGES ALLOWED WITHOUT PRIOR APPROVAL
APPROVED PLANS MUST BE AT CONSTRUCTION SITE

Imogene D. Womack

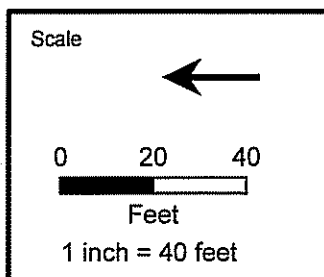
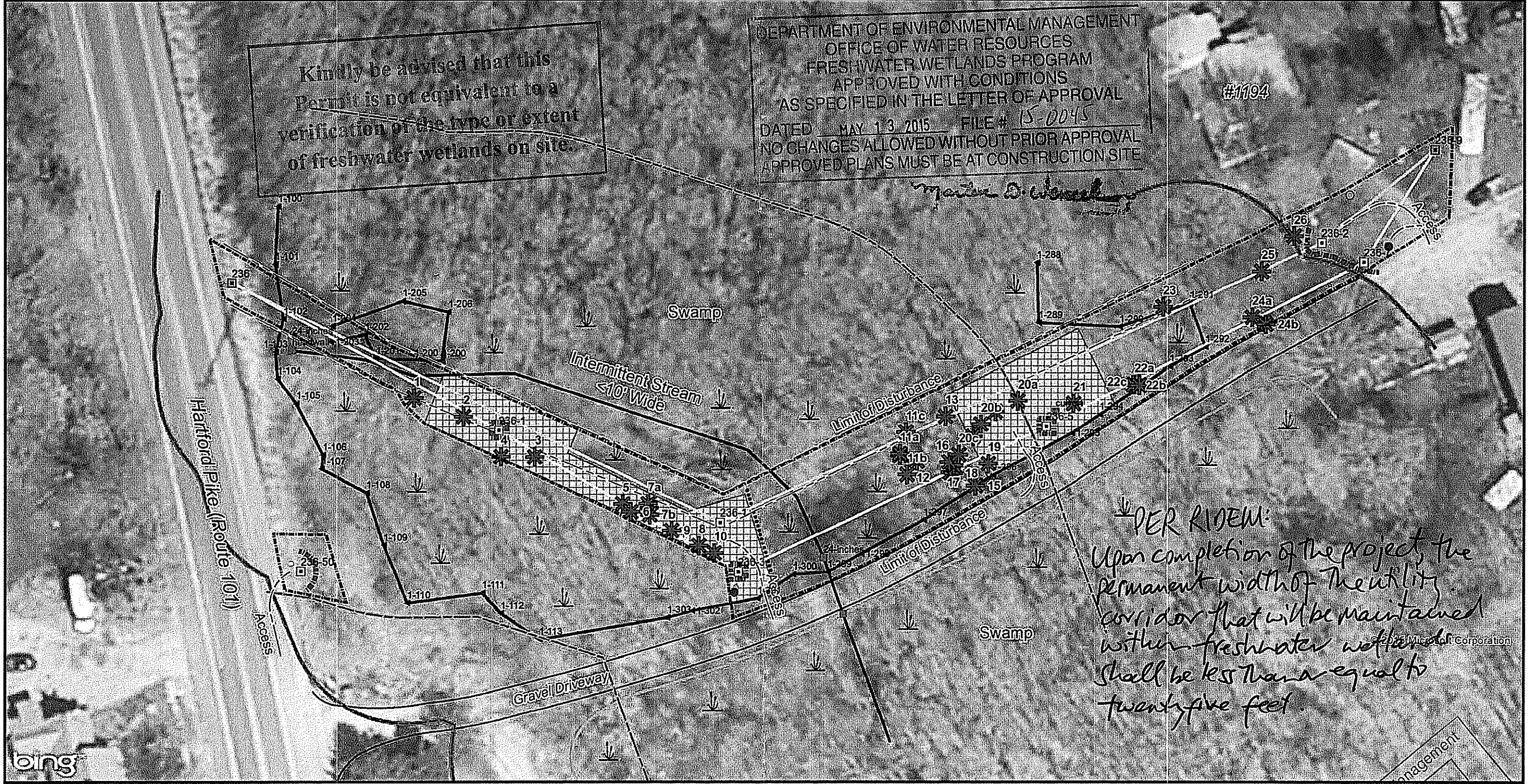
Environmental Management
MAR 19 2015
Office of Water Resources

RIDEM Request for Preliminary Determination Not Approved for Construction
March 11, 2015
General Notes and Details

C-2

2 of 3

Report Number 72624.00



Legend	
	Existing Pole to Remain
	Existing Pole to be Removed
	Proposed Pole
	Proposed Anchor
	Existing Anchor to be Removed
	Existing Distribution Line
	Proposed Relocated Distribution Line
	Access
	Limit of Disturbance
	Delineated Wetland Edge
	Approximate Wetland Edge
	Tributary of Dolly Brook
	Temporary Swamp Matting
	Straw Wattle
	Tree to be Removed
	Culvert
	Stone Wall
	Wetland Area
	50' Perimeter Wetland
	100' Riverbank Wetland

DISTRIBUTION LINE RELOCATION PROJECT
ASSESSOR'S PLAT 27 LOT 2
1194 HARTFORD PIKE (ROUTE 101)
SCITUATE, RHODE ISLAND
 Soil Erosion and Sediment Control Plan

Environmental Management
 2015
 Sources: Bing Maps (Aerial Imagery), VHB (GPS Located Wetlands, River Poles, Stone Walls)
 MAR
 national grid
 Office of Water Resources
 vhb