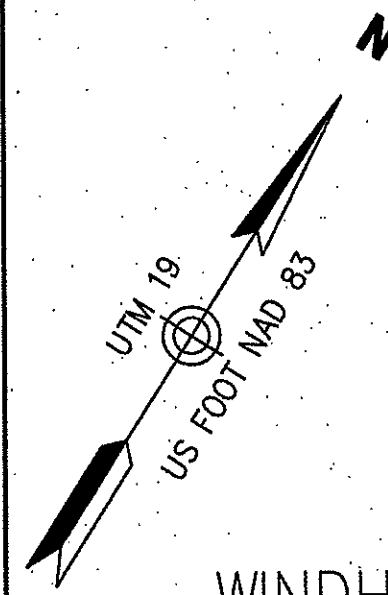


RIGHT-OF-WAY
TRACT NUMBERS
OWNERSHIP/AGENCY

SURVEY DATA
SURVEY COMPANY: VHB INC.
FIELD BOOK: NA
PAGES: NA

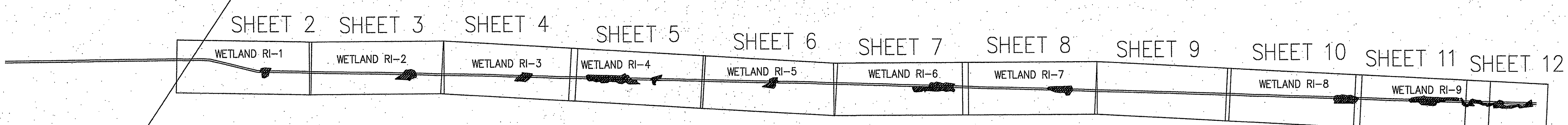
ALIGNMENT LEGEND

- VEGETATED WETLAND IMPACT
- PROPERTY LINE
- EXISTING AGT EASEMENT
- PROPOSED ANODE
- PROPOSED HEADER CABLE
- 25'-WIDE TEMPORARY WORKSPACE
- MAINLINE
- EXISTING AGT PIPELINE
- DRAIN MANHOLE
- CATCH BASIN
- SEWER MANHOLE
- ELECTRIC MANHOLE
- TELEPHONE MANHOLE
- MANHOLE
- HAND HOLE
- WATER GATE
- FIRE HYDRANT
- GAS GATE
- STREET SIGN
- LIGHT POLE
- UTILITY POLE
- GUY POLE
- GUY WIRE
- WELL
- EDGE OF PAVEMENT
- GUARD RAIL
- CHAIN LINK FENCE
- DRAINAGE LINE
- OVERHEAD WIRE
- UNDERGROUND ELECTRIC
- STONE WALL
- TREE LINE
- CENTERLINE STREAM
- VEGETATED WETLAND EDGE
- EROSION CONTROL



TOWN OF THOMPSON
WINDHAM COUNTY, CONNECTICUT

TOWN OF BURRILLVILLE
PROVIDENCE COUNTY, RHODE ISLAND



Kindly be advised that this Permit is not equivalent to a verification of the type or extent of freshwater wetlands on site.



- General Notes**
- THE PROPERTY LINES SHOWN ON THIS PLAN WERE COMPILED FROM LOCAL ASSESSOR'S PLATS AND ARE SHOWN GRAPHICALLY. VHB HAS NOT PERFORMED A FIELD SURVEY TO VERIFY THE PROPERTY LINES.
 - THE EXISTING CONDITIONS SHOWN ON THIS PLAN WERE DEVELOPED FROM A COMBINED EFFORT OF AERIAL PHOTOGRAMMETRIC MAPPING BY COL-EAST INC. BASED ON AERIAL PHOTOGRAPHS TAKEN ON MARCH 7, 2008, AND AUGMENTED BY AN ON-THE-GROUND SURVEY PERFORMED BY VHB DURING THE SUMMER OF 2014.
 - HORIZONTAL DATUM IS BASED ON UTM 19 PROJECTIONS, NAD 1983. VERTICAL DATUM IS BASED ON NAVD 1988.
 - THE WETLANDS SHOWN ON THIS PLAN WERE DELINEATED AND LOCATED IN MAY 2014 BY TRC ENVIRONMENTAL CORP. THE LOCATIONS WERE PROVIDED BY TRC AS A SHAPE FILE. INTERMEDIATE CHECKS WERE CONDUCTED ALONG CORRIDOR AND VERIFIED APPROXIMATELY A 1-3 FOOT LINEAR ACCURACY OF THE FLAG LOCATIONS.
 - PROPOSED CONSTRUCTION AND TYPICALS WERE DESIGNED BY OTHERS AND ARE SHOWN FOR GRAPHICAL PURPOSES ONLY.

- Construction Notes**
- ANY NECESSARY TRENCH DE-WATERING TO BE DIRECTED TO FILTER BAGS OR EQUIVALENT IN A MANNER SO AS NOT TO CAUSE EROSION/SEDIMENTATION.
 - CONTRACTOR TO COMPLY WITH ALL APPLICABLE PROVISIONS OF SPECTRA'S ENVIRONMENTAL CONSTRUCTION EROSION/SEDIMENTATION CONTROL PLAN.
 - THE FINAL IMPLEMENTATION AND LOCATION OF EROSION AND SEDIMENT CONTROLS WILL BE DETERMINED BY A SPECTRA INSPECTOR.
 - ANODE STATIONING IS BASED ON 24" MAINLINE.
 - THERE ARE NO PROPOSED GRADE CHANGES ASSOCIATED WITH THIS PROJECT. EXISTING GRADES SHALL BE RESTORED TO PRE-CONSTRUCTION CONDITIONS.
 - ANODE=MATCOR SPL, 16MA/FT
HEADER=#2/0 HMWPE
0 NEGATIVE CONNECTIONS, #2AWG

- Notes per R.I.D.E.M.:**
- All areas designated as 12-foot "Temporary Work space" (TWS) shall be considered the Approved Limit of Disturbance.
 - "Additional Temporary Work space" (ATWS) is authorized only in accordance with Condition No. 14 of the permit letter.
 - No grade changes are authorized.

DEPARTMENT OF ENVIRONMENTAL MANAGEMENT
OFFICE OF WATER RESOURCES
FRESHWATER WETLANDS PERMIT
APPROVED WITH CONDITIONS
AS SPECIFIED IN THE LETTER
DATED JUL 31 2015 FILE # 15-0130
NO CHANGES ALLOWED WITHOUT PERMIT
APPROVED PLANS MUST BE AT CONSTRUCTION SITE

Charles A. Hord

SOILS:
LAND USE:
% SLOPE:

I:\Mawald\11500.63\cad\sr\planset\11500.63 EXIST.dwg - PLOT TIME: 6/8/2015 5:04 PM

254CT	ALIGNMENT CHAP-BURR M/L	REV	DSN	CK	DESCRIPTION	ITEM NO.	DESCRIPTION	LN. FT.
DWG. NO.	DESCRIPTION	REV	DSN	CK	DESCRIPTION	ITEM NO.	DESCRIPTION	LN. FT.
	REFERENCE DRAWINGS				REVISIONS		MATERIALS	

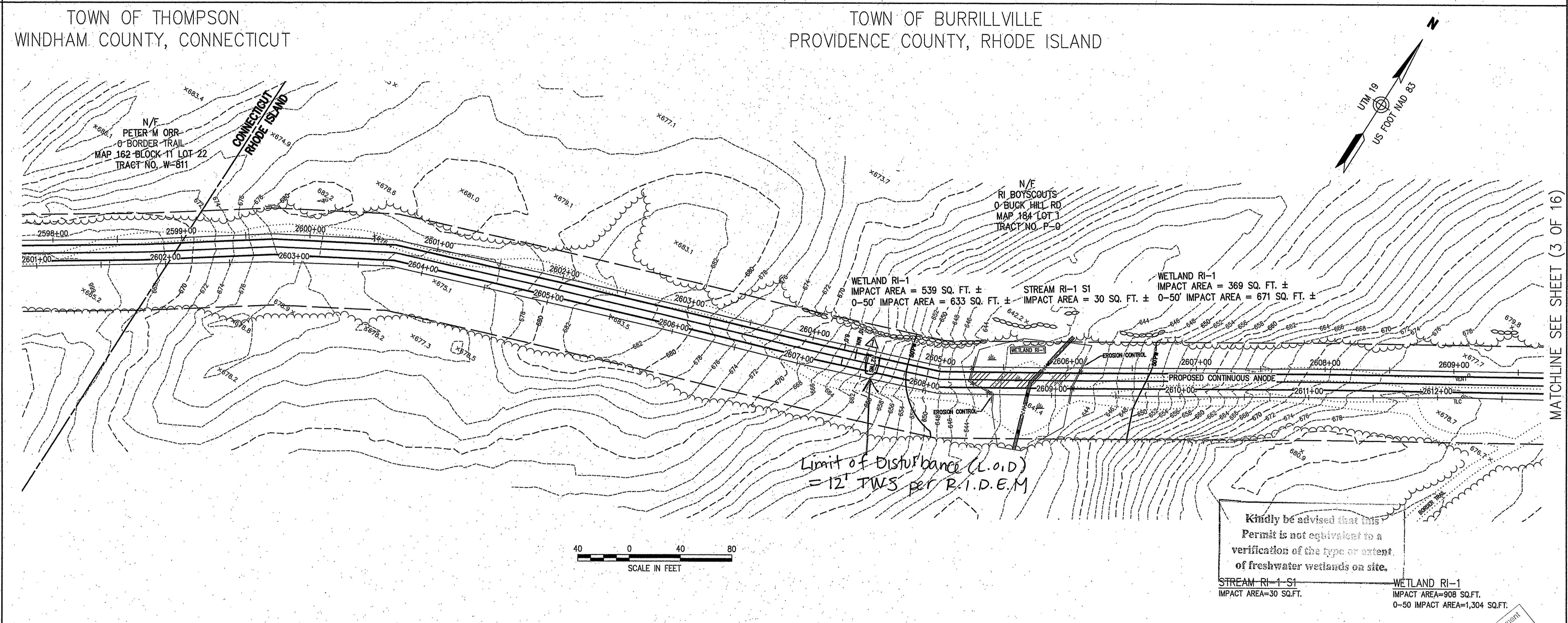


ENGINEERING APPROVALS				
DRAWN BY:	BID	CONSTRUCTION		
SLT	8/14			
TITLE	SIGNATURE	DATE	SIGNATURE	DATE

ALGONQUIN GAS TRANSMISSION, LLC
MAINLINE AND L30B
BORDER LINE TRAIL
GROUND BED
LOC.: PROVIDENCE COUNTY, RI.
YEAR: 2015 MC.400086.051.02 SCALE: 1"=1000'

Spectra Energy
Partners.
Algonquin Gas Transmission, LLC
5400 Westheimer Ct. Houston, TX 77056-5310
DWG.: C-399A 1 OF 16 REV.: 1

- ALIGNMENT LEGEND**
- VEGETATED WETLAND IMPACT
 - PROPERTY LINE
 - EXISTING AGT EASEMENT
 - PROPOSED ANODE
 - PROPOSED HEADER CABLE
 - 24'-WIDE TEMPORARY WORKSPACE
 - MAINLINE
 - EXISTING AGT PIPELINE
 - DRAIN MANHOLE
 - CATCH BASIN
 - SEWER MANHOLE
 - ELECTRIC MANHOLE
 - TELEPHONE MANHOLE
 - MANHOLE
 - HAND HOLE
 - WATER GATE
 - FIRE HYDRANT
 - GAS GATE
 - STREET SIGN
 - LIGHT POLE
 - UTILITY POLE
 - GUY POLE
 - GUY WIRE
 - WELL
 - EDGE OF PAVEMENT
 - GUARD RAIL
 - CHAIN LINK FENCE
 - DRAINAGE LINE
 - OVERHEAD WIRE
 - UNDERGROUND ELECTRIC
 - STONE WALL
 - TREE LINE
 - CENTERLINE STREAM
 - VEGETATED WETLAND EDGE
 - 50-FT PERIMETER WETLAND
 - EROSION CONTROL
- General Notes**
- THE PROPERTY LINES SHOWN ON THIS PLAN WERE COMPILED FROM LOCAL ASSESSOR'S PLATS AND ARE SHOWN GRAPHICALLY. VHB HAS NOT PERFORMED A FIELD SURVEY TO VERIFY THE PROPERTY LINES.
 - THE EXISTING CONDITIONS SHOWN ON THIS PLAN WERE DEVELOPED FROM A COMBINED EFFORT OF AERIAL PHOTOGRAMMETRIC MAPPING BY COI-EAST INC. BASED ON AERIAL PHOTOGRAPHS TAKEN ON MARCH 7, 2008, AND AUGMENTED BY AN ON-THE-GROUND SURVEY PERFORMED BY VHB DURING THE SUMMER OF 2014.
 - HORIZONTAL DATUM IS BASED ON UTM PROJECTIONS, NAD 1983. VERTICAL DATUM IS BASED ON NAVD 1988.
 - THE WETLANDS SHOWN ON THIS PLAN WERE DELINEATED AND LOCAED IN MAY 2014 BY TRC ENVIRONMENTAL CORP. THE LOCATIONS WERE PROVIDED BY TRC AS A SHAPE FILE. INTERMEDIATE CHECKS WERE CONDUCTED ALONG CORRIDOR AND VERIFIED APPROXIMATELY A 1-3 FOOT LINEAR ACCURACY OF THE FLAG LOCATIONS.
 - PROPOSED CONSTRUCTION AND TYPICALS WERE DESIGNED BY OTHERS AND ARE SHOWN FOR GRAPHICAL PURPOSES ONLY.
- Construction Notes**
- ANY NECESSARY TRENCH DE-WATERING TO BE DIRECTED TO FILTER BAGS OR EQUIVALENT IN A MANNER SO AS NOT TO CAUSE EROSION/SEDIMENTATION.
 - CONTRACTOR TO COMPLY WITH ALL APPLICABLE PROVISIONS OF SPECTRA'S ENVIRONMENTAL CONSTRUCTION EROSION/SEDIMENTATION CONTROL PLAN.
 - THE FINAL IMPLEMENTATION AND LOCATION OF EROSION AND SEDIMENT CONTROLS WILL BE DETERMINED BY A SPECTRA INSPECTOR.
 - ANODE STATIONING IS BASED ON 24" MAINLINE.
 - THERE ARE NO PROPOSED GRADE CHANGES ASSOCIATED WITH THIS PROJECT. EXISTING GRADES SHALL BE RESTORED TO PRE-CONSTRUCTION CONDITIONS.
 - ANODE=MATCOR SPL, 16MA/FT
 HEADER=#2/0 HMWPE
 0 NEGATIVE CONNECTIONS, #2AWG



Kindly be advised that this Permit is not equivalent to a verification of the type or extent of freshwater wetlands on site.

STREAM RI-1 S1
IMPACT AREA=30 SQ.FT.

WETLAND RI-1
IMPACT AREA=908 SQ.FT.
0-50 IMPACT AREA=1,304 SQ.FT.

DEPARTMENT OF ENVIRONMENTAL MANAGEMENT
 OFFICE OF WATER RESOURCES
 FRESHWATER WETLANDS PERMIT
 APPROVED WITH CONDITIONS
 AS SPECIFIED IN THE LETTER OF APPROVAL
 DATED JUL 31 2015 FILE # 15-0130
 NO CHANGES ALLOWED WITHOUT PRIOR APPROVAL
 APPROVED PLANS MUST BE AT CONSTRUCTION SITE

Christopher C. Danforth

11500.63 EXIST.dwg - PLOT TIME: 6/8/2015 5:05 PM

BORDER TRAIL
 LENGTH = 20,218'

THIS TOPOGRAPHIC SURVEY AND PLAN CONFORM TO A CLASS III STANDARD AS ADOPTED BY THE RHODE ISLAND BOARD OF REGISTRATION FOR PROFESSIONAL LAND SURVEYORS.

PROPERTY LINE INFORMATION IS DEPICTED IN ACCORDANCE WITH A CLASS IV STANDARD AS ADOPTED BY THE RHODE ISLAND BOARD OF REGISTRATION FOR PROFESSIONAL LAND SURVEYORS. PROPERTY LINE INFORMATION IS NOT TO BE CONSTRUED AS AN ACTUAL BOUNDARY SURVEY AND IS SUBJECT TO SUCH CHANGES AS AN ACCURATE BOUNDARY SURVEY MAY DISCLOSE.

CHRISTOPHER C. DANFORTH, P.L.S. #1957 DATE 6/9/15

CHRISTOPHER C. DANFORTH
 No. 1957
 PROFESSIONAL LAND SURVEYOR

NOT FOR CONSTRUCTION

SOILS:						
LAND USE:						
% SLOPE:						
REV	DSN	CK	DESCRIPTION	ITEM NO.	DESCRIPTION	LN. FT.
254CT			ALIGNMENT CHAP-BURR M/L		UPDATE TWS FROM 15' TO 12'	
DWG. NO.			DESCRIPTION		REVISIONS	
REFERENCE DRAWINGS					MATERIALS	

VHB

ENGINEERING APPROVALS

DRAWN BY:	BID	CONSTRUCTION
SLT	8/14	
TITLE	SIGNATURE	DATE

ALGONQUIN GAS TRANSMISSION, LLC
 MAINLINE AND L30B
 BORDER LINE TRAIL
 GROUND BED

LOC.: WINDHAM COUNTY, CT.

YEAR: 2015 MC.400086.051.02 SCALE: 1"=40'

DWG.:C-399A 2 OF 16 REV.: 1

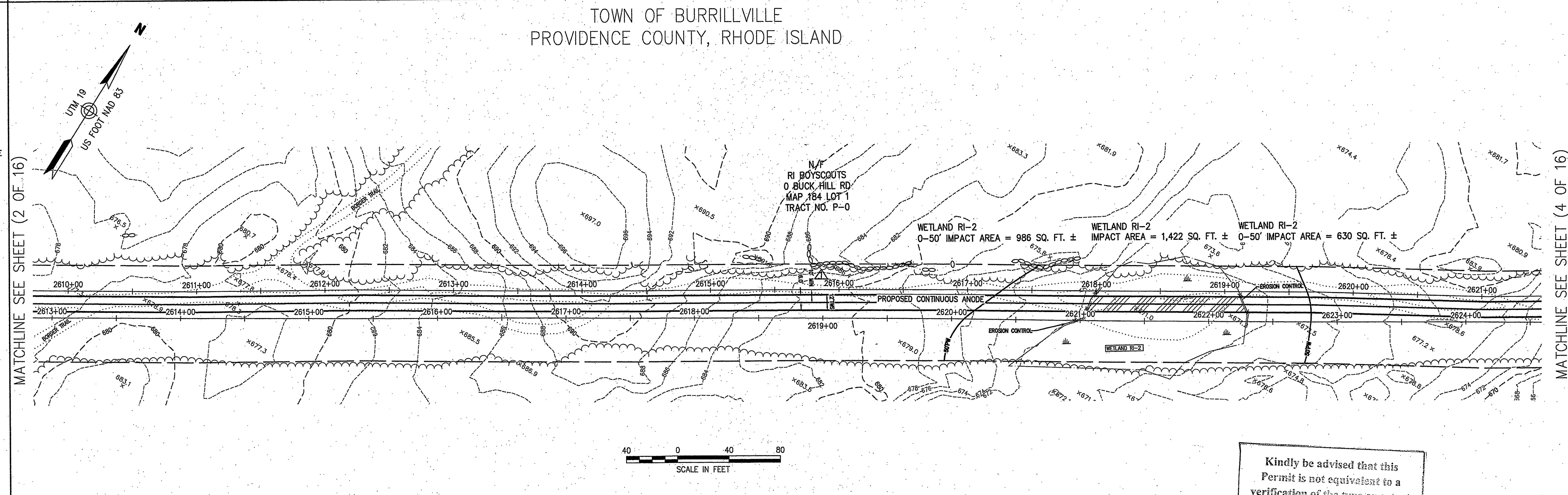
SpectraEnergy Partners.
 Algonquin Gas Transmission, LLC
 5400 Westheimer Ct. Houston, TX 77056-5310

RIGHT-OF-WAY
TRACT NUMBERS
OWNERSHIP/AGENCY

SURVEY DATA
SURVEY COMPANY: VHB INC.
FIELD BOOK: NA
PAGES: NA

TRACT P-0

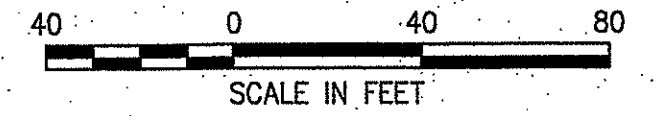
- ALIGNMENT LEGEND**
- VEGETATED WETLAND IMPACT
 - PROPERTY LINE
 - EXISTING AGT EASEMENT
 - PROPOSED ANODE
 - PROPOSED HEADER CABLE
 - 35'-WIDE TEMPORARY WORKSPACE
 - MAINLINE
 - EXISTING AGT PIPELINE
 - DRAIN MANHOLE
 - CATCH BASIN
 - SEWER MANHOLE
 - ELECTRIC MANHOLE
 - TELEPHONE MANHOLE
 - MANHOLE
 - HAND HOLE
 - WATER GATE
 - FIRE HYDRANT
 - GAS GATE
 - STREET SIGN
 - LIGHT POLE
 - UTILITY POLE
 - GUY POLE
 - GUY WIRE
 - WELL
 - EDGE OF PAVEMENT
 - GUARD RAIL
 - CHAIN LINK FENCE
 - DRAINAGE LINE
 - OVERHEAD WIRE
 - UNDERGROUND ELECTRIC
 - STONE WALL
 - TREE LINE
 - CENTERLINE STREAM
 - VEGETATED WETLAND EDGE
 - 50-FT PERIMETER WETLAND
 - EROSION CONTROL



MATCHLINE SEE SHEET (2 OF 16)

MATCHLINE SEE SHEET (4 OF 16)

TOWN OF BURRILLVILLE
PROVIDENCE COUNTY, RHODE ISLAND



Kindly be advised that this Permit is not equivalent to a verification of the type or extent of freshwater wetlands on site.

WETLAND RI-2
IMPACT AREA=1,422 SQ.FT.
0-50 IMPACT AREA=1,616 SQ.FT.

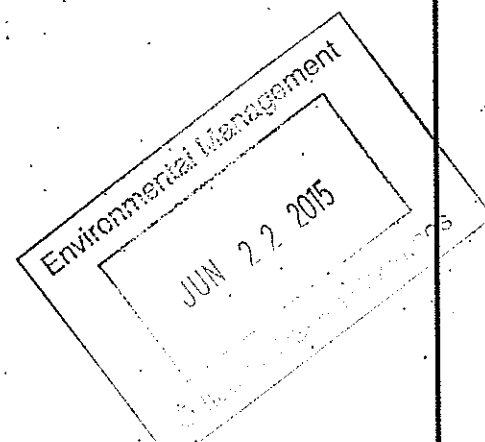
- General Notes**
- THE PROPERTY LINES SHOWN ON THIS PLAN WERE COMPILED FROM LOCAL ASSESSOR'S PLATS AND ARE SHOWN GRAPHICALLY. VHB HAS NOT PERFORMED A FIELD SURVEY TO VERIFY THE PROPERTY LINES.
 - THE EXISTING CONDITIONS SHOWN ON THIS PLAN WERE DEVELOPED FROM A COMBINED EFFORT OF AERIAL PHOTOGRAMMETRIC MAPPING BY COL-EAST INC. BASED ON AERIAL PHOTOGRAPHS TAKEN ON MARCH 7, 2008, AND AUGMENTED BY AN ON-THE-GROUND SURVEY PERFORMED BY VHB DURING THE SUMMER OF 2014.
 - HORIZONTAL DATUM IS BASED ON UTM 19 PROJECTIONS, NAD 1983. VERTICAL DATUM IS BASED ON NAVD 1988
 - THE WETLANDS SHOWN ON THIS PLAN WERE DELINEATED AND LOCAED IN MAY 2014 BY TRC ENVIRONMENTAL CORP. THE LOCATIONS WERE PROVIDED BY TRC AS A SHAPE FILE. INTERMEDIATE CHECKS WERE CONDUCTED ALONG CORRIDOR AND VERIFIED APPROXIMATELY A 1-3 FOOT LINEAR ACCURACY OF THE FLAG LOCATIONS.
 - PROPOSED CONSTRUCTION AND TYPICALS WERE DESIGNED BY OTHERS AND ARE SHOWN FOR GRAPHICAL PURPOSES ONLY.

- Construction Notes**
- ANY NECESSARY TRENCH DE-WATERING TO BE DIRECTED TO FILTER BAGS OR EQUIVALENT IN A MANNER SO AS NOT TO CAUSE EROSION/SEDIMENTATION.
 - CONTRACTOR TO COMPLY WITH ALL APPLICABLE PROVISIONS OF SPECTRA'S ENVIRONMENTAL CONSTRUCTION EROSION/SEDIMENTATION CONTROL PLAN.
 - THE FINAL IMPLEMENTATION AND LOCATION OF EROSION AND SEDIMENT CONTROLS WILL BE DETERMINED BY A SPECTRA INSPECTOR.
 - ANODE STATIONING IS BASED ON 24" MAINLINE.
 - THERE ARE NO PROPOSED GRADE CHANGES ASSOCIATED WITH THIS PROJECT. EXISTING GRADES SHALL BE RESTORED TO PRE-CONSTRUCTION CONDITIONS.
 - ANODE=MATCOR SPL, 16MA/FT
HEADER=#2/0 HWPPE
0 NEGATIVE CONNECTIONS, #2AWG

BORDER TRAIL
LENGTH = 20,218'

DEPARTMENT OF ENVIRONMENTAL MANAGEMENT
OFFICE OF WATER RESOURCES
FRESHWATER WETLANDS PERMITS
APPROVED WITH COMMENTS
AS SPECIFIED IN THE LETTER
DATED JUL 31 2015 FILE # 15-0130
NO CHANGES ALLOWED WITHOUT PREVIOUS WRITTEN
APPROVED PLANS MUST BE AT CONSTRUCTION SITE

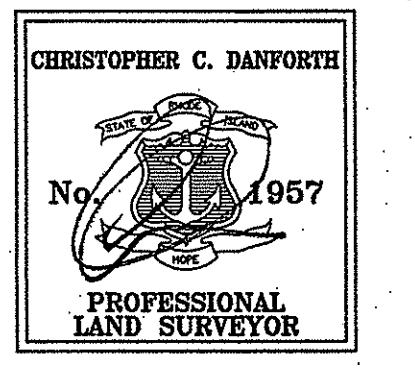
Charles A. Harbert



THIS TOPOGRAPHIC SURVEY AND PLAN CONFORM TO A CLASS III STANDARD AS ADOPTED BY THE RHODE ISLAND BOARD OF REGISTRATION FOR PROFESSIONAL LAND SURVEYORS.

PROPERTY LINE INFORMATION IS DEPICTED IN ACCORDANCE WITH A CLASS IV STANDARD AS ADOPTED BY THE RHODE ISLAND BOARD OF REGISTRATION FOR PROFESSIONAL LAND SURVEYORS. PROPERTY LINE INFORMATION IS NOT TO BE CONSTRUED AS AN ACTUAL BOUNDARY SURVEY AND IS SUBJECT TO SUCH CHANGES AS AN ACCURATE BOUNDARY SURVEY MAY DISCLOSE.

Christopher C. Danforth
CHRISTOPHER C. DANFORTH, P.L.S. #1957 DATE 6/9/15



NOT FOR CONSTRUCTION

SOILS:	
LAND USE:	
% SLOPE:	

DWG. NO.	DESCRIPTION	REV	DSN	CK	DESCRIPTION	ITEM NO.	DESCRIPTION	LN. FT.
255RI	ALIGNMENT CHAP-BURR M/L				UPDATE TWS FROM 15' TO 12'			
	REFERENCE DRAWINGS				REVISIONS		MATERIALS	



DRAWN BY:	ENGINEERING APPROVALS			
	BID	CONSTRUCTION		
SLT	8/14			
TITLE	SIGNATURE	DATE	SIGNATURE	DATE

ALGONQUIN GAS TRANSMISSION, LLC
MAINLINE AND L30B
BORDER LINE TRAIL
GROUND BED

LOC.: PROVIDENCE COUNTY

YEAR: 2015 MC.400086.051.02 SCALE: 1"=40'

Spectra Energy
Partners.

Algonquin Gas Transmission, LLC
5400 Westheimer Ct. Houston, TX 77056-5310

DWG.:C-399A 3 OF 16 REV.: 1

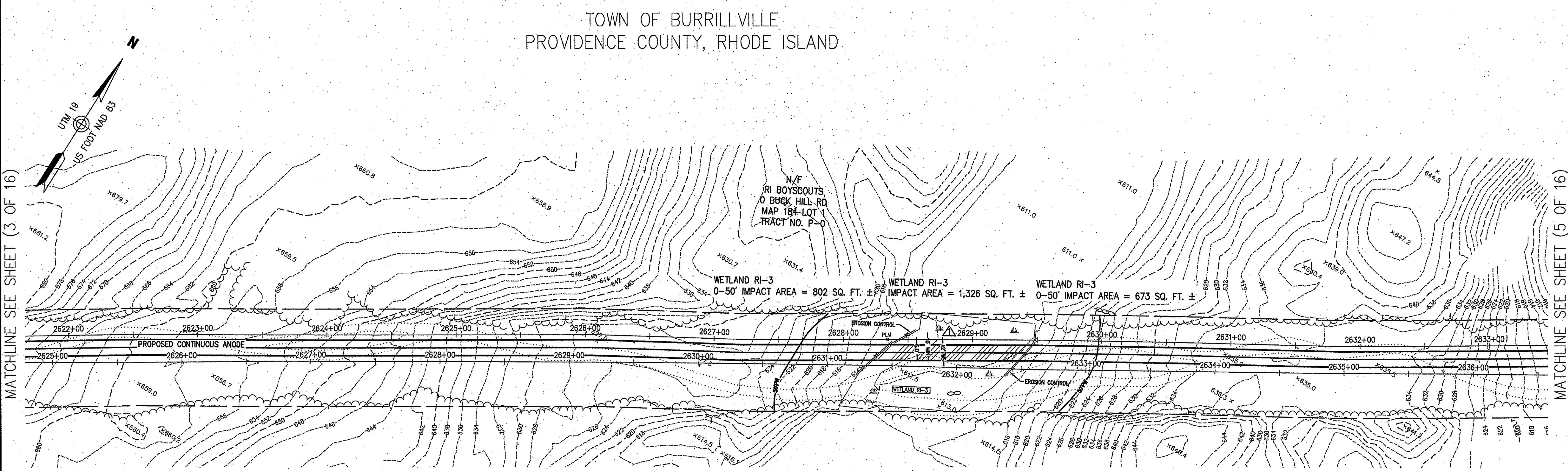
I:\Mawald\11500.63\cad\sr\plans\11500.63 EXIST.dwg - PLOT TIME: 6/8/2015 5:05 PM

RIGHT-OF-WAY
TRACT NUMBERS
OWNERSHIP/AGENCY

SURVEY DATA
SURVEY COMPANY: VHB INC.
FIELD BOOK: NA
PAGES: NA

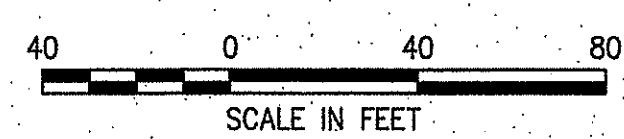
TRACT P-0

- ALIGNMENT LEGEND**
- VEGETATED WETLAND IMPACT
 - PROPERTY LINE
 - EXISTING AGT EASEMENT
 - PROPOSED ANODE
 - PROPOSED HEADER CABLE
 - 12'-WIDE TEMPORARY WORKSPACE
 - MAINLINE
 - EXISTING AGT PIPELINE
 - DRAIN MANHOLE
 - CATCH BASIN
 - SEWER MANHOLE
 - ELECTRIC MANHOLE
 - TELEPHONE MANHOLE
 - MANHOLE
 - HAND HOLE
 - WATER GATE
 - FIRE HYDRANT
 - GAS GATE
 - STREET SIGN
 - LIGHT POLE
 - UTILITY POLE
 - GUY POLE
 - GUY WIRE
 - WELL
 - EDGE OF PAVEMENT
 - GUARD RAIL
 - CHAIN LINK FENCE
 - DRAINAGE LINE
 - OVERHEAD WIRE
 - UNDERGROUND ELECTRIC
 - STONE WALL
 - TREE LINE
 - CENTERLINE STREAM
 - VEGETATED WETLAND EDGE
 - 50'-FT PERIMETER WETLAND
 - EROSION CONTROL



MATCHLINE SEE SHEET (3 OF 16)

MATCHLINE SEE SHEET (5 OF 16)



Kindly be advised that this Permit is not equivalent to a verification of the type or extent of freshwater wetlands on site.

WETLAND RI-3
IMPACT AREA=1,326 SQ.FT.
0-50' IMPACT AREA=1,475 SQ.FT.

- General Notes**
- THE PROPERTY LINES SHOWN ON THIS PLAN WERE COMPILED FROM LOCAL ASSESSOR'S PLATS AND ARE SHOWN GRAPHICALLY. VHB HAS NOT PERFORMED A FIELD SURVEY TO VERIFY THE PROPERTY LINES.
 - THE EXISTING CONDITIONS SHOWN ON THIS PLAN WERE DEVELOPED FROM A COMBINED EFFORT OF AERIAL PHOTOGRAMMETRIC MAPPING BY COL-EAST INC. BASED ON AERIAL PHOTOGRAPHS TAKEN ON MARCH 7, 2008, AND AUGMENTED BY AN ON-THE-GROUND SURVEY PERFORMED BY VHB DURING THE SUMMER OF 2014.
 - HORIZONTAL DATUM IS BASED ON UTM 19 PROJECTIONS, NAD 1983. VERTICAL DATUM IS BASED ON NAVD 1988
 - THE WETLANDS SHOWN ON THIS PLAN WERE DELINEATED AND LOCATED IN MAY 2014 BY TRC ENVIRONMENTAL CORP. THE LOCATIONS WERE PROVIDED BY TRC AS A SHAPE FILE. INTERMEDIATE CHECKS WERE CONDUCTED ALONG CORRIDOR AND VERIFIED APPROXIMATELY A 1-3 FOOT LINEAR ACCURACY OF THE FLAG LOCATIONS.
 - PROPOSED CONSTRUCTION AND TYPICALS WERE DESIGNED BY OTHERS AND ARE SHOWN FOR GRAPHICAL PURPOSES ONLY.

- Construction Notes**
- ANY NECESSARY TRENCH DE-WATERING TO BE DIRECTED TO FILTER BAGS OR EQUIVALENT IN A MANNER SO AS NOT TO CAUSE EROSION/SEDIMENTATION.
 - CONTRACTOR TO COMPLY WITH ALL APPLICABLE PROVISIONS OF SPECTRA'S ENVIRONMENTAL CONSTRUCTION EROSION/SEDIMENTATION CONTROL PLAN.
 - THE FINAL IMPLEMENTATION AND LOCATION OF EROSION AND SEDIMENT CONTROLS WILL BE DETERMINED BY A SPECTRA INSPECTOR.
 - ANODE STATIONING IS BASED ON 24" MAINLINE.
 - THERE ARE NO PROPOSED GRADE CHANGES ASSOCIATED WITH THIS PROJECT. EXISTING GRADES SHALL BE RESTORED TO PRE-CONSTRUCTION CONDITIONS.
 - ANODE=MATCOR SPL, 16MA/FT
HEADER=#2/0 HMWPE
0 NEGATIVE CONNECTIONS, #2AWG

BORDER TRAIL
LENGTH = 20,218'

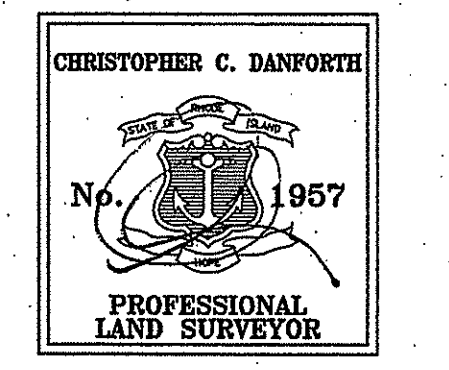
THIS TOPOGRAPHIC SURVEY AND PLAN CONFORM TO A CLASS III STANDARD AS ADOPTED BY THE RHODE ISLAND BOARD OF REGISTRATION FOR PROFESSIONAL LAND SURVEYORS.

PROPERTY LINE INFORMATION IS DEPICTED IN ACCORDANCE WITH A CLASS IV STANDARD AS ADOPTED BY THE RHODE ISLAND BOARD OF REGISTRATION FOR PROFESSIONAL LAND SURVEYORS. PROPERTY LINE INFORMATION IS NOT TO BE CONSTRUED AS AN ACTUAL BOUNDARY SURVEY AND IS SUBJECT TO SUCH CHANGES AS AN ACCURATE BOUNDARY SURVEY MAY DISCLOSE.

CC 6/19/15
CHRISTOPHER C. DANFORTH, P.L.S. #1957 DATE

DEPARTMENT OF ENVIRONMENTAL MANAGEMENT
OFFICE OF WATER RESOURCES
FRESHWATER WETLANDS PERMIT
APPROVED WITH CONDITIONS
AS SPECIFIED IN THE LETTER OF
DATED JUL 31 2015 FILE # 15-0130
NO CHANGES ALLOWED WITHOUT PRIOR APPROVAL
APPROVED PLANS MUST BE AT COMPTON'S OFFICE

Charles A. Hunter
Office of Water Resources
JUN 22 2015



NOT FOR CONSTRUCTION

SOILS:
LAND USE:
% SLOPE:

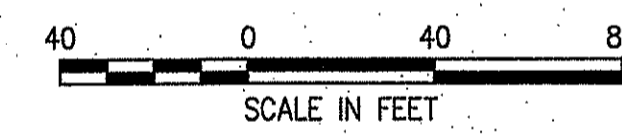
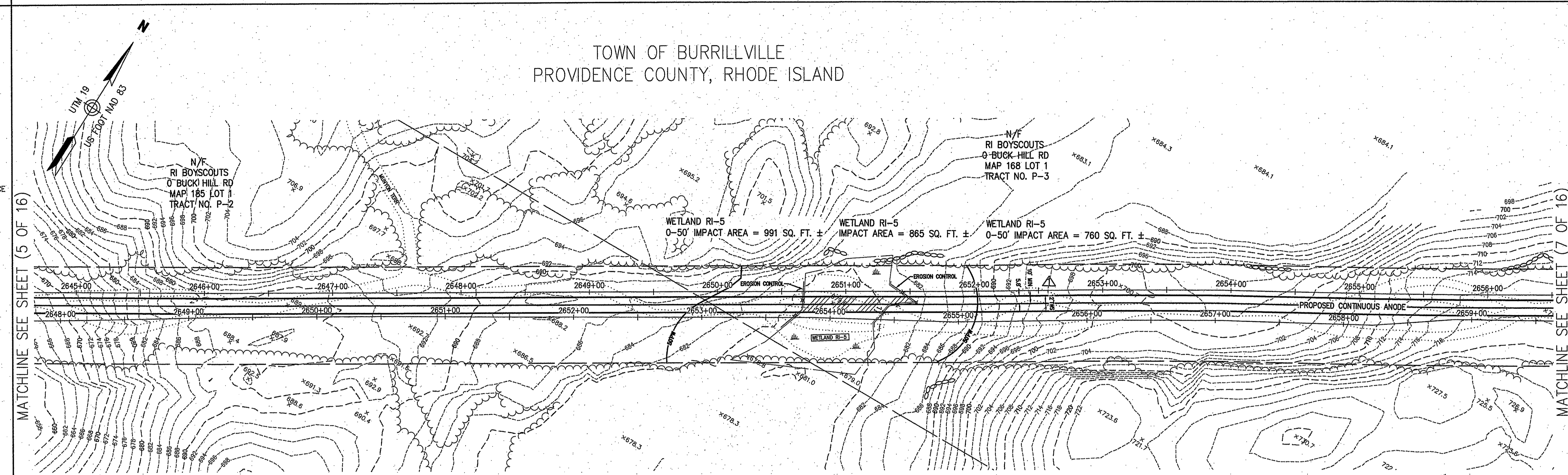
DWG. NO.	DESCRIPTION	REV	DSN	CK	DESCRIPTION	ITEM NO.	DESCRIPTION	LN. FT.
255RI	ALIGNMENT CHAP-BURR M/L				UPDATE TWS FROM 15' TO 12'			
REFERENCE DRAWINGS								
REVISIONS								
MATERIALS								

VHB	ENGINEERING APPROVALS				ALGONQUIN GAS TRANSMISSION, LLC MAINLINE AND L30B BORDER LINE TRAIL GROUND BED	Spectra Energy Partners.
	DRAWN BY: SLT	BID 8/14	CONSTRUCTION			
TITLE		SIGNATURE	DATE	SIGNATURE	DATE	LOC.: PROVIDENCE COUNTY
YEAR: 2015		MC.400086.051.02	SCALE: 1"=40'	DWG.:C-399A 4 OF 16		REV.: 1

\\wawad\id\11500.63\cod\sr\plan\set\11500.63_EXIST.dwg - PLOT TIME: 6/8/2015 5:05 PM

SURVEY DATA
 SURVEY COMPANY: VHB INC.
 FIELD BOOK: NA
 PAGES: NA

- ALIGNMENT LEGEND**
- VEGETATED WETLAND IMPACT
 - PROPERTY LINE
 - EXISTING AGT EASEMENT
 - PROPOSED ANODE
 - PROPOSED HEADER CABLE
 - 17'-35' WIDE TEMPORARY WORKSPACE
 - MAINLINE
 - EXISTING AGT PIPELINE
 - DRAIN MANHOLE
 - CATCH BASIN
 - SEWER MANHOLE
 - ELECTRIC MANHOLE
 - TELEPHONE MANHOLE
 - MANHOLE
 - HAND HOLE
 - WATER GATE
 - FIRE HYDRANT
 - GAS GATE
 - STREET SIGN
 - LIGHT POLE
 - UTILITY POLE
 - GUY POLE
 - GUY WIRE
 - WELL
 - EDGE OF PAVEMENT
 - GUARD RAIL
 - CHAIN LINK FENCE
 - DRAINAGE LINE
 - OVERHEAD WIRE
 - UNDERGROUND ELECTRIC
 - STONE WALL
 - TREE LINE
 - CENTERLINE STREAM
 - VEGETATED WETLAND EDGE
 - 50-FT PERIMETER WETLAND
 - EROSION CONTROL



Kindly be advised that this Permit is not equivalent to a verification of the type or extent of freshwater wetlands on site.

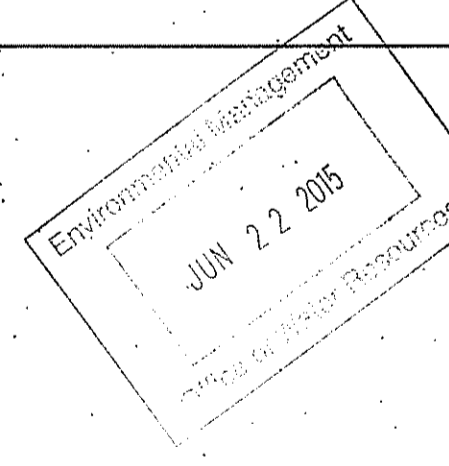
WETLAND RI-5
 IMPACT AREA=865 SQ.FT.
 0-50 IMPACT AREA=1,751 SQ.FT.

- General Notes**
- THE PROPERTY LINES SHOWN ON THIS PLAN WERE COMPILED FROM LOCAL ASSESSOR'S PLATS AND ARE SHOWN GRAPHICALLY. VHB HAS NOT PERFORMED A FIELD SURVEY TO VERIFY THE PROPERTY LINES.
 - THE EXISTING CONDITIONS SHOWN ON THIS PLAN WERE DEVELOPED FROM A COMBINED EFFORT OF AERIAL PHOTOGRAMMETRIC MAPPING BY COL-EAST INC. BASED ON AERIAL PHOTOGRAPHS TAKEN ON MARCH 7, 2008, AND AUGMENTED BY AN ON-THE-GROUND SURVEY PERFORMED BY VHB DURING THE SUMMER OF 2014.
 - HORIZONTAL DATUM IS BASED ON UTM 19 PROJECTIONS, NAD 1983. VERTICAL DATUM IS BASED ON NAVD 1988
 - THE WETLANDS SHOWN ON THIS PLAN WERE DELINEATED AND LOCATED IN MAY 2014 BY TRC ENVIRONMENTAL CORP. THE LOCATIONS WERE PROVIDED BY TRC AS A SHAPE FILE. INTERMEDIATE CHECKS WERE CONDUCTED ALONG CORRIDOR AND VERIFIED APPROXIMATELY A 1-3 FOOT LINEAR ACCURACY OF THE FLAG LOCATIONS.
 - PROPOSED CONSTRUCTION AND TYPICALS WERE DESIGNED BY OTHERS AND ARE SHOWN FOR GRAPHICAL PURPOSES ONLY.

- Construction Notes**
- ANY NECESSARY TRENCH DE-WATERING TO BE DIRECTED TO FILTER BAGS OR EQUIVALENT IN A MANNER SO AS NOT TO CAUSE EROSION/SEDIMENTATION.
 - CONTRACTOR TO COMPLY WITH ALL APPLICABLE PROVISIONS OF SPECTRA'S ENVIRONMENTAL CONSTRUCTION EROSION/SEDIMENTATION CONTROL PLAN.
 - THE FINAL IMPLEMENTATION AND LOCATION OF EROSION AND SEDIMENT CONTROLS WILL BE DETERMINED BY A SPECTRA INSPECTOR.
 - ANODE STATIONING IS BASED ON 24" MAINLINE.
 - THERE ARE NO PROPOSED GRADE CHANGES ASSOCIATED WITH THIS PROJECT. EXISTING GRADES SHALL BE RESTORED TO PRE-CONSTRUCTION CONDITIONS.
 - ANODE=MATCOR SPL 16MA/FT
 HEADER=#2/0 HMWPE
 0 NEGATIVE CONNECTIONS, #2AWG

DEPARTMENT OF ENVIRONMENTAL MANAGEMENT
 OFFICE OF WATER RESOURCES
 FRESHWATER WETLANDS DIVISION
 APPROVED WITH CONDITIONS
 AS SPECIFIED IN THE LETTER TO THE PERMITTEE
 DATED JUL 31 2015 FILE # 15-0130
 NO CHANGES ALLOWED WITHOUT PERMITTEE'S WRITTEN APPROVAL
 APPROVED PLANS MUST BE AT CONSTRUCTION SITE

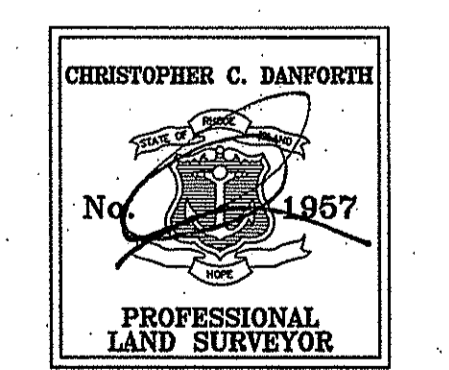
Charles A. Harbert



THIS TOPOGRAPHIC SURVEY AND PLAN CONFORM TO A CLASS III STANDARD AS ADOPTED BY THE RHODE ISLAND BOARD OF REGISTRATION FOR PROFESSIONAL LAND SURVEYORS.

PROPERTY LINE INFORMATION IS DEPICTED IN ACCORDANCE WITH A CLASS IV STANDARD AS ADOPTED BY THE CONNECTICUT BOARD OF REGISTRATION FOR PROFESSIONAL LAND SURVEYORS. PROPERTY LINE INFORMATION IS NOT TO BE CONSTRUED AS AN ACTUAL BOUNDARY SURVEY AND IS SUBJECT TO SUCH CHANGES AS AN ACCURATE BOUNDARY SURVEY MAY DISCLOSE.

CD 6/9/15
 CHRISTOPHER C. DANFORTH, P.L.S. #1957 DATE



NOT FOR CONSTRUCTION

SOILS:
 LAND USE:
 % SLOPE:

REV	DSN	CK	DESCRIPTION	ITEM NO.	DESCRIPTION	LN. FT.
1			UPDATE TWS FROM 15' TO 12'			
255RI			ALIGNMENT CHAP-BURR M/L			
DWG. NO.	DESCRIPTION	REV	DESCRIPTION	ITEM NO.	DESCRIPTION	LN. FT.
REFERENCE DRAWINGS		REVISIONS		MATERIALS		

VHB

ENGINEERING APPROVALS

DRAWN BY:	BID	CONSTRUCTION
SLT	8/14	
TITLE	SIGNATURE	DATE

ALGONQUIN GAS TRANSMISSION, LLC
 MAINLINE AND L30B
 BORDER LINE TRAIL
 GROUND BED

LOC.: PROVIDENCE COUNTY

SpectraEnergy Partners.
 Algonquin Gas Transmission, LLC
 5400 Westheimer Ct. Houston, TX 77056-5310

YEAR: 2015 MC.400086.051.02 SCALE: 1"=40'
 DWG.:C-399A 6 OF 16 REV.: 1

\\mavrad\id\11500.63\cdd\set\plan\set\11500.63 EXIST.dwg - PLOT TIME: 6/8/2015 5:05 PM

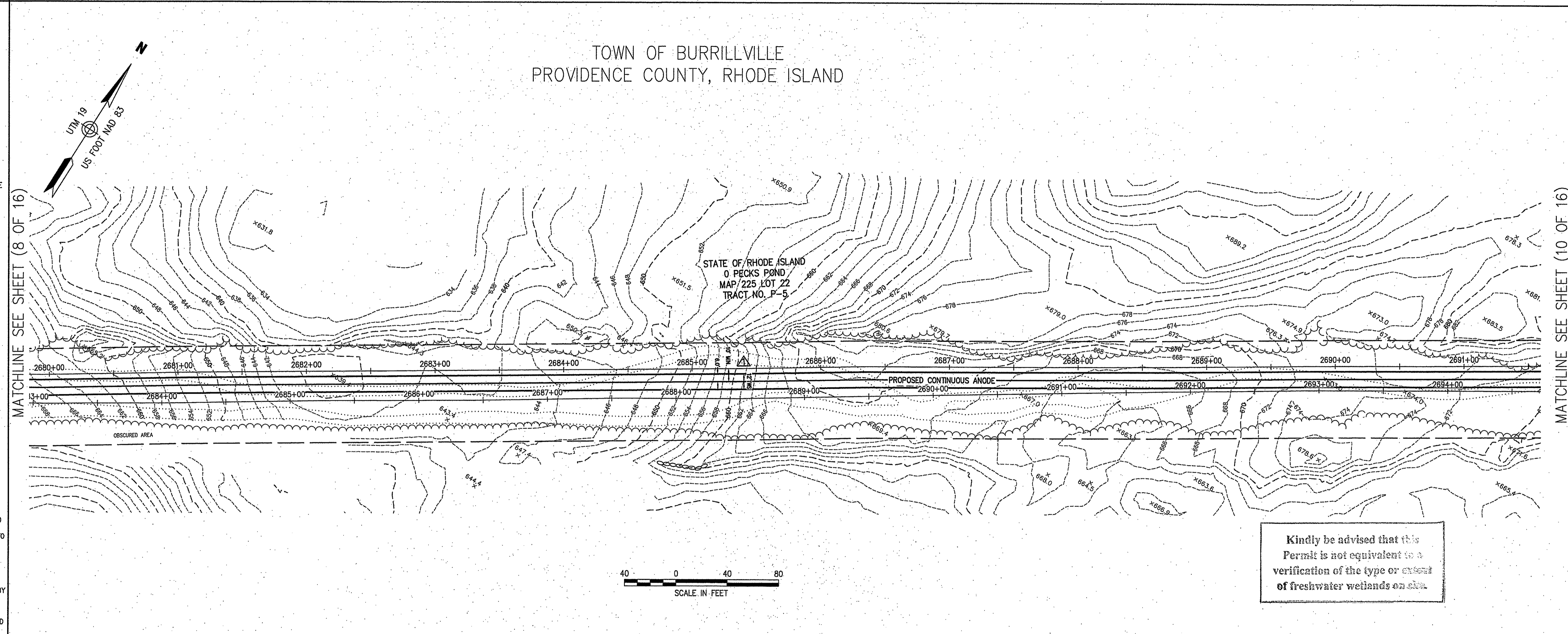
RIGHT-OF-WAY
TRACT NUMBERS
OWNERSHIP/AGENCY

SURVEY DATA
SURVEY COMPANY: VHB INC.
FIELD BOOK: NA
PAGES: NA

TRACT P-5

- ALIGNMENT LEGEND**
- VEGETATED WETLAND IMPACT
 - PROPERTY LINE
 - EXISTING AGT EASEMENT
 - PROPOSED ANODE
 - PROPOSED HEADER CABLE
 - 17'-15" WIDE TEMPORARY WORKSPACE
 - EXISTING AGT PIPELINE
 - MAINLINE
 - DRAIN MANHOLE
 - CATCH BASIN
 - SEWER MANHOLE
 - ELECTRIC MANHOLE
 - TELEPHONE MANHOLE
 - MANHOLE
 - HAND HOLE
 - WATER GATE
 - FIRE HYDRANT
 - GAS GATE
 - STREET SIGN
 - LIGHT POLE
 - UTILITY POLE
 - GUY POLE
 - GUY WIRE
 - WELL
 - EDGE OF PAVEMENT
 - GUARD RAIL
 - CHAIN LINK FENCE
 - DRAINAGE LINE
 - OVERHEAD WIRE
 - UNDERGROUND ELECTRIC
 - STONE WALL
 - TREE LINE
 - CENTERLINE STREAM
 - VEGETATED WETLAND EDGE
 - 50 FT PERIMETER WETLAND
 - EROSION CONTROL

TOWN OF BURRILLVILLE
PROVIDENCE COUNTY, RHODE ISLAND



General Notes

- THE PROPERTY LINES SHOWN ON THIS PLAN WERE COMPILED FROM LOCAL ASSESSOR'S PLATS AND ARE SHOWN GRAPHICALLY. VHB HAS NOT PERFORMED A FIELD SURVEY TO VERIFY THE PROPERTY LINES.
- THE EXISTING CONDITIONS SHOWN ON THIS PLAN WERE DEVELOPED FROM A COMBINED EFFORT OF AERIAL PHOTOGRAMMETRIC MAPPING BY COL-EAST INC. BASED ON AERIAL PHOTOGRAPHS TAKEN ON MARCH 7, 2008, AND AUGMENTED BY AN ON-THE-GROUND SURVEY PERFORMED BY VHB DURING THE SUMMER OF 2014.
- HORIZONTAL DATUM IS BASED ON UTM 19 PROJECTIONS, NAD 1983. VERTICAL DATUM IS BASED ON NAVD 1988
- THE WETLANDS SHOWN ON THIS PLAN WERE DELINEATED AND LOCAED IN MAY 2014 BY TRC ENVIRONMENTAL CORP. THE LOCATIONS WERE PROVIDED BY TRC AS A SHAPE FILE. INTERMEDIATE CHECKS WERE CONDUCTED ALONG CORRIDOR AND VERIFIED APPROXIMATELY A 1-3 FOOT LINEAR ACCURACY OF THE FLAG LOCATIONS.
- PROPOSED CONSTRUCTION AND TYPICALS WERE DESIGNED BY OTHERS AND ARE SHOWN FOR GRAPHICAL PURPOSES ONLY.

Construction Notes

- ANY NECESSARY TRENCH DE-WATERING TO BE DIRECTED TO FILTER BAGS OR EQUIVALENT IN A MANNER SO AS NOT TO CAUSE EROSION/SEDIMENTATION.
- CONTRACTOR TO COMPLY WITH ALL APPLICABLE PROVISIONS OF SPECTRA'S ENVIRONMENTAL CONSTRUCTION EROSION/SEDIMENTATION CONTROL PLAN.
- THE FINAL IMPLEMENTATION AND LOCATION OF EROSION AND SEDIMENT CONTROLS WILL BE DETERMINED BY A SPECTRA INSPECTOR.
- ANODE STATIONING IS BASED ON 24" MAINLINE.
- THERE ARE NO PROPOSED GRADE CHANGES ASSOCIATED WITH THIS PROJECT. EXISTING GRADES SHALL BE RESTORED TO PRE-CONSTRUCTION CONDITIONS.
- ANODE=MATCOR SPL, 16MA/FT
HEADER=#2/0 HMWPE
0 NEGATIVE CONNECTIONS, #2AWG

DEPARTMENT OF ENVIRONMENTAL MANAGEMENT
OFFICE OF WATER RESOURCES
FRESHWATER WETLANDS PROGRAM
APPROVED WITH CONDITIONS
AS SPECIFIED IN THE LETTER OF APPROVAL
DATED JUL 31 2015 FILE # 15-6130
NO CHANGES ALLOWED WITHOUT PRIOR APPROVAL
APPROVED PLANS MUST BE AT CONSTRUCTION SITE

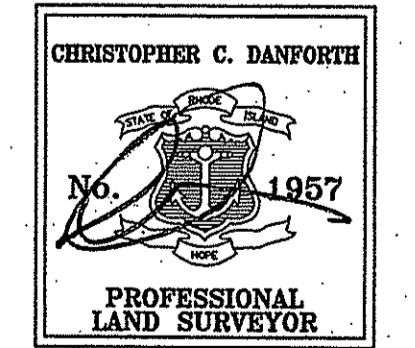
Charles A. Harwood
Office of Water Resources
JUL 22 2015

BORDER TRAIL
LENGTH = 20,218'

THIS TOPOGRAPHIC SURVEY AND PLAN CONFORM TO A CLASS III STANDARD AS ADOPTED BY THE RHODE ISLAND BOARD OF REGISTRATION FOR PROFESSIONAL LAND SURVEYORS.

PROPERTY LINE INFORMATION IS DEPICTED IN ACCORDANCE WITH A CLASS IV STANDARD AS ADOPTED BY THE RHODE ISLAND BOARD OF REGISTRATION FOR PROFESSIONAL LAND SURVEYORS. PROPERTY LINE INFORMATION IS NOT TO BE CONSTRUED AS AN ACTUAL BOUNDARY SURVEY AND IS SUBJECT TO SUCH CHANGES AS AN ACCURATE BOUNDARY SURVEY MAY DISCLOSE.

Christopher C. Danforth 6/9/15
CHRISTOPHER C. DANFORTH, P.L.S. #1957 DATE



NOT FOR CONSTRUCTION

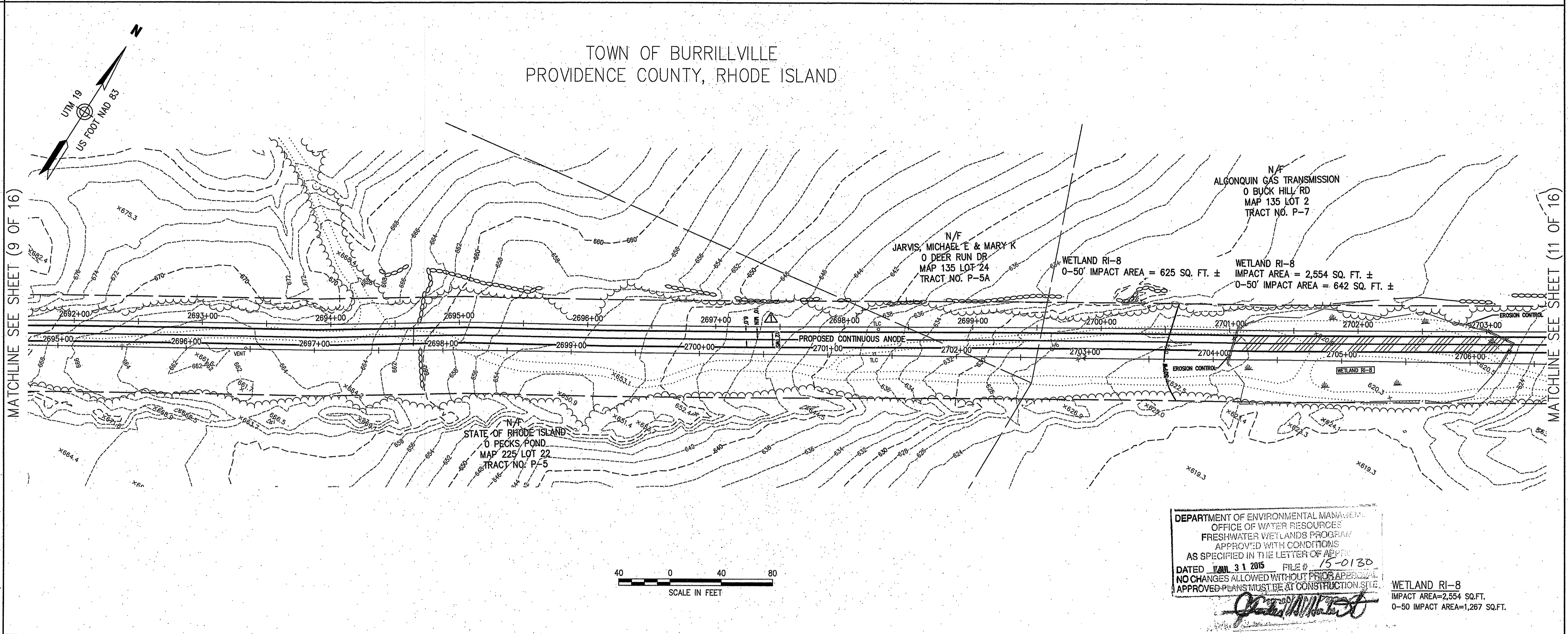
SOILS:	
LAND USE:	
% SLOPE:	

DWG. NO.	ALIGNMENT CHAP-BURR M/L	REV	DSN	CK	DESCRIPTION	ITEM NO.	DESCRIPTION	LN. FT.	VHB	ENGINEERING APPROVALS				ALGONQUIN GAS TRANSMISSION, LLC MAINLINE AND L30B BORDER LINE TRAIL GROUND BED	Spectra Energy Partners.			
										DRAWN BY:	BID	CONSTRUCTION						
256RI					UPDATE TWS FROM 15' TO 12'					SLT	8/14							
										TITLE	SIGNATURE	DATE	SIGNATURE	DATE	LOC.: PROVIDENCE COUNTY			
														YEAR: 2015	MC.400086.051.02	SCALE: 1"=40'	DWG.:C-399A 9 OF 16	REV.: 1

\\mowald\id\11500.63\cod\ter\plan\set\11500.63 EXIST.dwg - PLOT TIME: 6/8/2015 5:06 PM

RIGHT-OF-WAY TRACT NUMBERS OWNERSHIP/AGENCY	TRACT P-5	2698+47 TRACT P-5A	2699+54	TRACT P-7
SURVEY DATA SURVEY COMPANY: VHB INC. FIELD BOOK: NA PAGES: NA				

ALIGNMENT LEGEND	
<ul style="list-style-type: none"> VEGETATED WETLAND IMPACT PROPERTY LINE EXISTING AGT EASEMENT PROPOSED ANODE PROPOSED HEADER CABLE 15'-WIDE TEMPORARY WORKSPACE EXISTING AGT PIPELINE MAINLINE ⊙ DRAIN MANHOLE ⊙ CATCH BASIN ⊙ SEWER MANHOLE ⊙ ELECTRIC MANHOLE ⊙ TELEPHONE MANHOLE ⊙ MANHOLE HH □ HAND HOLE ⊙ WATER GATE ⊙ FIRE HYDRANT ⊙ GAS GATE ⊙ STREET SIGN ⊙ LIGHT POLE ⊙ UTILITY POLE ⊙ GUY POLE ⊙ GUY WIRE ⊙ WELL ⊙ EOP — EDGE OF PAVEMENT — GUARD RAIL — CHAIN LINK FENCE — DRAINAGE LINE — OVERHEAD WIRE — UNDERGROUND ELECTRIC — STONE WALL — TREE LINE — CENTERLINE STREAM — VEGETATED WETLAND EDGE — 50'-FT PERIMETER WETLAND — EROSION CONTROL 	General Notes 1. THE PROPERTY LINES SHOWN ON THIS PLAN WERE COMPILED FROM LOCAL ASSESSOR'S PLATS AND ARE SHOWN GRAPHICALLY. VHB HAS NOT PERFORMED A FIELD SURVEY TO VERIFY THE PROPERTY LINES. 2. THE EXISTING CONDITIONS SHOWN ON THIS PLAN WERE DEVELOPED FROM A COMBINED EFFORT OF AERIAL PHOTOGRAMMETRIC MAPPING BY COL-EAST INC. BASED ON AERIAL PHOTOGRAPHS TAKEN ON MARCH 7, 2008, AND AUGMENTED BY AN ON-THE-GROUND SURVEY PERFORMED BY VHB DURING THE SUMMER OF 2014. 3. HORIZONTAL DATUM IS BASED ON UTM 19 PROJECTIONS, NAD 1983. VERTICAL DATUM IS BASED ON NAVD 1988 4. THE WETLANDS SHOWN ON THIS PLAN WERE DELINEATED AND LOCATED IN MAY 2014 BY TRC ENVIRONMENTAL CORP. THE LOCATIONS WERE PROVIDED BY TRC AS A SHAPE FILE. INTERMEDIATE CHECKS WERE CONDUCTED ALONG CORRIDOR AND VERIFIED APPROXIMATELY A 1-3 FOOT LINEAR ACCURACY OF THE FLAG LOCATIONS. 5. PROPOSED CONSTRUCTION AND TYPICALS WERE DESIGNED BY OTHERS AND ARE SHOWN FOR GRAPHICAL PURPOSES ONLY.



Construction Notes 1. ANY NECESSARY TRENCH DE-WATERING TO BE DIRECTED TO FILTER BASIN OR EQUIVALENT IN A MANNER SO AS NOT TO CAUSE EROSION/SEDIMENTATION. 2. CONTRACTOR TO COMPLY WITH ALL APPLICABLE PROVISIONS OF SPECTRA'S ENVIRONMENTAL CONSTRUCTION EROSION/SEDIMENTATION CONTROL PLAN. 3. THE FINAL IMPLEMENTATION AND LOCATION OF EROSION AND SEDIMENT CONTROLS WILL BE DETERMINED BY A SPECTRA INSPECTOR. 4. ANODE STATIONING IS BASED ON 24" MAINLINE. 5. THERE ARE NO PROPOSED GRADE CHANGES ASSOCIATED WITH THIS PROJECT. EXISTING GRADES SHALL BE RESTORED TO PRE-CONSTRUCTION CONDITIONS. 6. ANODE=MATORC SPL, 16MA/FT HEADER=#2/O HMWPE O NEGATIVE CONNECTIONS, #2AWG																	
SOILS: LAND USE: % SLOPE:	<table border="1"> <tr><td> </td><td> </td><td> </td><td> </td></tr> <tr><td> </td><td> </td><td> </td><td> </td></tr> <tr><td> </td><td> </td><td> </td><td> </td></tr> <tr><td> </td><td> </td><td> </td><td> </td></tr> </table>																

BORDER TRAIL
LENGTH = 20,218'

THIS TOPOGRAPHIC SURVEY AND PLAN CONFORM TO A CLASS III STANDARD AS ADOPTED BY THE RHODE ISLAND BOARD OF REGISTRATION FOR PROFESSIONAL LAND SURVEYORS.

PROPERTY LINE INFORMATION IS DEPICTED IN ACCORDANCE WITH A CLASS IV STANDARD AS ADOPTED BY THE RHODE ISLAND BOARD OF REGISTRATION FOR PROFESSIONAL LAND SURVEYORS. PROPERTY LINE INFORMATION IS NOT TO BE CONSTRUED AS AN ACTUAL BOUNDARY SURVEY AND IS SUBJECT TO SUCH CHANGES AS AN ACCURATE BOUNDARY SURVEY MAY DISCLOSE.

DEPARTMENT OF ENVIRONMENTAL MANAGEMENT
 OFFICE OF WATER RESOURCES
 FRESHWATER WETLANDS PROGRAM
 APPROVED WITH CONDITIONS
 AS SPECIFIED IN THE LETTER OF APPROVAL
 DATED APR 31 2015 FILE # 15-0130
 NO CHANGES ALLOWED WITHOUT PRIOR APPROVAL
 APPROVED PLANS MUST BE AT CONSTRUCTION SITE.

WETLAND RI-8
 IMPACT AREA=2,554 SQ.FT.
 0-50 IMPACT AREA=1,267 SQ.FT.

Kindly be advised that this Permit is not equivalent to a verification of the type or extent of freshwater wetlands on site.

Environmental Management
 JUL 22 2015
 Office of Water Resources

CHRISTOPHER C. DANFORTH
 No. 1957
 PROFESSIONAL LAND SURVEYOR

NOT FOR CONSTRUCTION

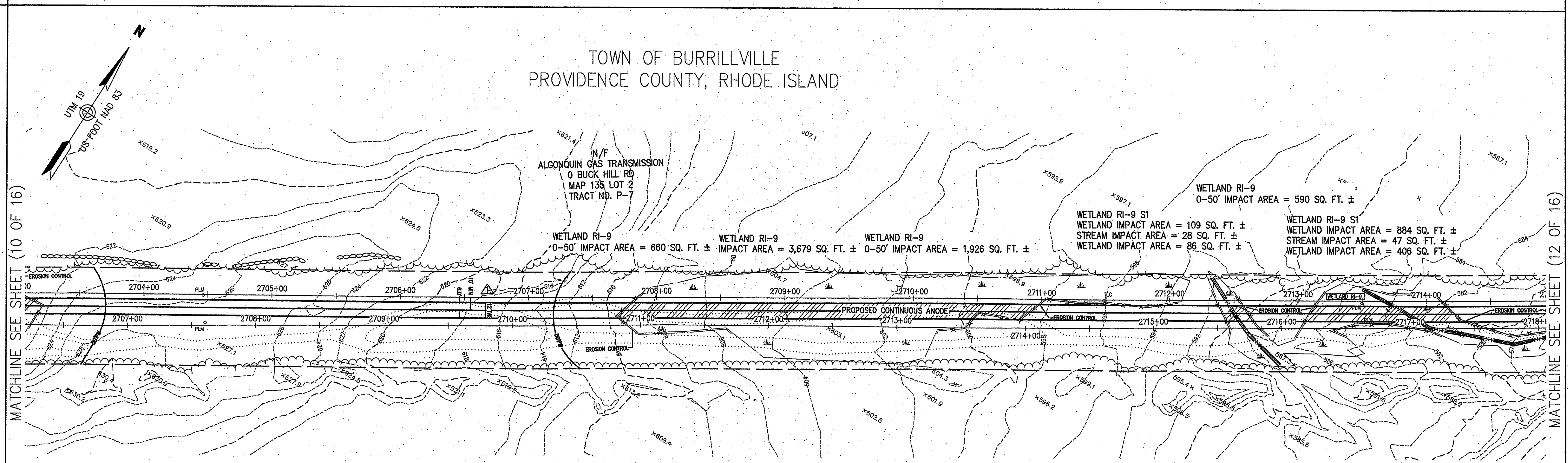
DWG. NO. 256RI ALIGNMENT CHAP-BURR M/L UPDATE TWS FROM 15' TO 12'	REVISIONS REV DSN CK DESCRIPTION LN. FT.	MATERIALS	ENGINEERING APPROVALS DRAWN BY: SLT BID: 8/14 CONSTRUCTION	ALGONQUIN GAS TRANSMISSION, LLC MAINLINE AND L30B BORDER LINE TRAIL GROUND BED LOC.: PROVIDENCE COUNTY YEAR: 2015 MC.400086.051.02 SCALE: 1"=40'	SpectraEnergy Partners Algonquin Gas Transmission, LLC 5400 Westheimer Ct. Houston, TX 77056-5310 DWG.:C-399A 10 OF 16 REV.: 1
---	---	-----------	---	---	---

RIGHT-OF-WAY
TRACT NUMBERS
OWNERSHIP/AGENCY

TRACT P-7

SURVEY DATA
SURVEY COMPANY: VHB INC.
FIELD BOOK: NA
PAGES: NA

- ALIGNMENT LEGEND
- VEGETATED WETLAND IMPACT
 - PROPERTY LINE
 - EXISTING AGT EASEMENT
 - PROPOSED ANODE
 - PROPOSED HEADER CABLE
 - 15'-WIDE TEMPORARY WORKSPACE
 - EXISTING AGT PIPELINE
 - DRAIN MANHOLE
 - CATCH BASIN
 - SEWER MANHOLE
 - ELECTRIC MANHOLE
 - TELEPHONE MANHOLE
 - MANHOLE
 - HAND HOLE
 - WATER GATE
 - FIRE HYDRANT
 - GAS GATE
 - STREET SIGN
 - LIGHT POLE
 - UTILITY POLE
 - GUY POLE
 - GUY WIRE
 - WELL
 - EDGE OF PAVEMENT
 - GUARD RAIL
 - CHAIN LINK FENCE
 - DRAINAGE LINE
 - OVERHEAD WIRE
 - UNDERGROUND ELECTRIC
 - STONE WALL
 - TREE LINE
 - CENTRALINE STREAM
 - VEGETATED WETLAND EDGE
 - 50-FT PERIMETER WETLAND
 - EROSION CONTROL

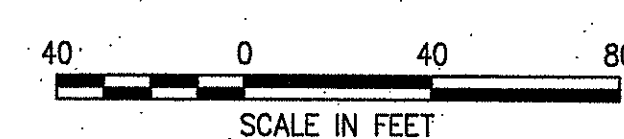


General Notes

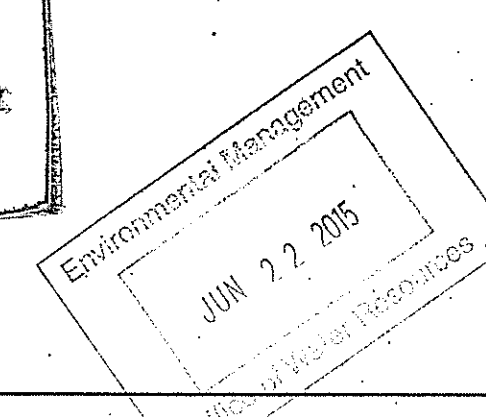
- THE PROPERTY LINES SHOWN ON THIS PLAN WERE COMPILED FROM LOCAL ASSESSOR'S PLATS AND ARE SHOWN GRAPHICALLY. VHB HAS NOT PERFORMED A FIELD SURVEY TO VERIFY THE PROPERTY LINES.
- THE EXISTING CONDITIONS SHOWN ON THIS PLAN WERE DEVELOPED FROM A COMBINED EFFORT OF AERIAL PHOTOGRAMMETRIC MAPPING BY COL-EAST INC. BASED ON AERIAL PHOTOGRAPHS TAKEN ON MARCH 7, 2008, AND AUGMENTED BY AN ON-THE-GROUND SURVEY PERFORMED BY VHB DURING THE SUMMER OF 2014.
- HORIZONTAL DATUM IS BASED ON UTM 19 PROJECTIONS, NAD 1983. VERTICAL DATUM IS BASED ON NAVD 1988
- THE WETLANDS SHOWN ON THIS PLAN WERE DELINEATED AND LOCAED IN MAY 2014 BY TRC ENVIRONMENTAL CORP. THE LOCATIONS WERE PROVIDED BY TRC AS A SHAPE FILE. INTERMEDIATE CHECKS WERE CONDUCTED ALONG CORRIDOR AND VERIFIED APPROXIMATELY A 1-3 FOOT LINEAR ACCURACY OF THE FLAG LOCATIONS.
- PROPOSED CONSTRUCTION AND TYPICALS WERE DESIGNED BY OTHERS AND ARE SHOWN FOR GRAPHICAL PURPOSES ONLY.

Construction Notes

- ANY NECESSARY TRENCH DE-WATERING TO BE DIRECTED TO FILTER BAGS OR EQUIVALENT IN A MANNER SO AS NOT TO CAUSE EROSION/SEDIMENTATION.
- CONTRACTOR TO COMPLY WITH ALL APPLICABLE PROVISIONS OF SPECTRA'S ENVIRONMENTAL CONSTRUCTION EROSION/SEDIMENTATION CONTROL PLAN.
- THE FINAL IMPLEMENTATION AND LOCATION OF EROSION AND SEDIMENT CONTROLS WILL BE DETERMINED BY A SPECTRA INSPECTOR.
- ANODE STATIONING IS BASED ON 24" MAINLINE.
- THERE ARE NO PROPOSED GRADE CHANGES ASSOCIATED WITH THIS PROJECT. EXISTING GRADES SHALL BE RESTORED TO PRE-CONSTRUCTION CONDITIONS.
- ANODE=MATCOR SPL, 16MA/FT
HEADER=#2/0 HMMPE
0 NEGATIVE CONNECTIONS, #2AWG



Kindly be advised that this Permit is not equivalent to a verification of the type or extent of freshwater wetlands on site.



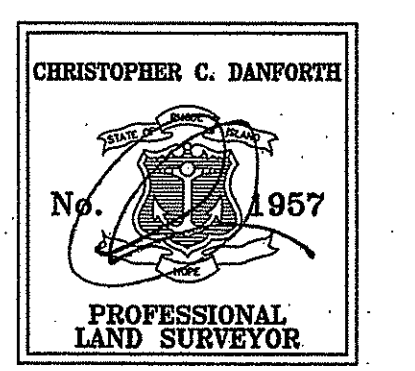
BORDER TRAIL
LENGTH = 20,218'

THIS TOPOGRAPHIC SURVEY AND PLAN CONFORM TO A CLASS III STANDARD AS ADOPTED BY THE RHODE ISLAND BOARD OF REGISTRATION FOR PROFESSIONAL LAND SURVEYORS.

PROPERTY LINE INFORMATION IS DEPICTED IN ACCORDANCE WITH A CLASS IV STANDARD AS ADOPTED BY THE RHODE ISLAND BOARD OF REGISTRATION FOR PROFESSIONAL LAND SURVEYORS. PROPERTY LINE INFORMATION IS NOT TO BE CONSTRUED AS AN ACTUAL BOUNDARY SURVEY AND IS SUBJECT TO CHANGE AS AN ACCURATE BOUNDARY SURVEY MAY DISCLOSE.

DEPARTMENT OF ENVIRONMENTAL MANAGEMENT
OFFICE OF WATER RESOURCES
FRESHWATER WETLANDS PROGRAM
APPROVED WITH CONDITIONS
SPECIFIED IN THE LETTER OF APPROVAL
DATED JAN 31 2015 FILE # 15-0130
NO CHANGES ALLOWED WITHOUT PRIOR APPROVAL
APPROVED PLANS MUST BE AT CONSTRUCTION SITE

Christopher C. Danforth
CHRISTOPHER C. DANFORTH, P.L.S. #1957 DATE 6/9/15



NOT FOR CONSTRUCTION

SOILS:	
LAND USE:	
% SLOPE:	

REV	DSN	CK	DESCRIPTION	ITEM NO.	DESCRIPTION	LN. FT.
256R1			ALIGNMENT CHAP-BURR M/L		UPDATE TWS FROM 15' TO 12'	
DWG. NO.			DESCRIPTION		REVISIONS	
			REFERENCE DRAWINGS		MATERIALS	

	ENGINEERING APPROVALS				ALGONQUIN GAS TRANSMISSION, LLC MAINLINE AND L30B BORDER LINE TRAIL GROUND BED	
	DRAWN BY: SLT	BID 8/14	CONSTRUCTION			
	TITLE	SIGNATURE	DATE	SIGNATURE	DATE	YEAR: 2015 MC.400086.051.02 SCALE: 1"=40' DWG.:C-399A 11 OF 16 REV.: 1

\\Mawald\id\11500.63\cod\er\plans\11500.63 EXIST.dwg - PLOT TIME: 6/8/2015 5:06 PM

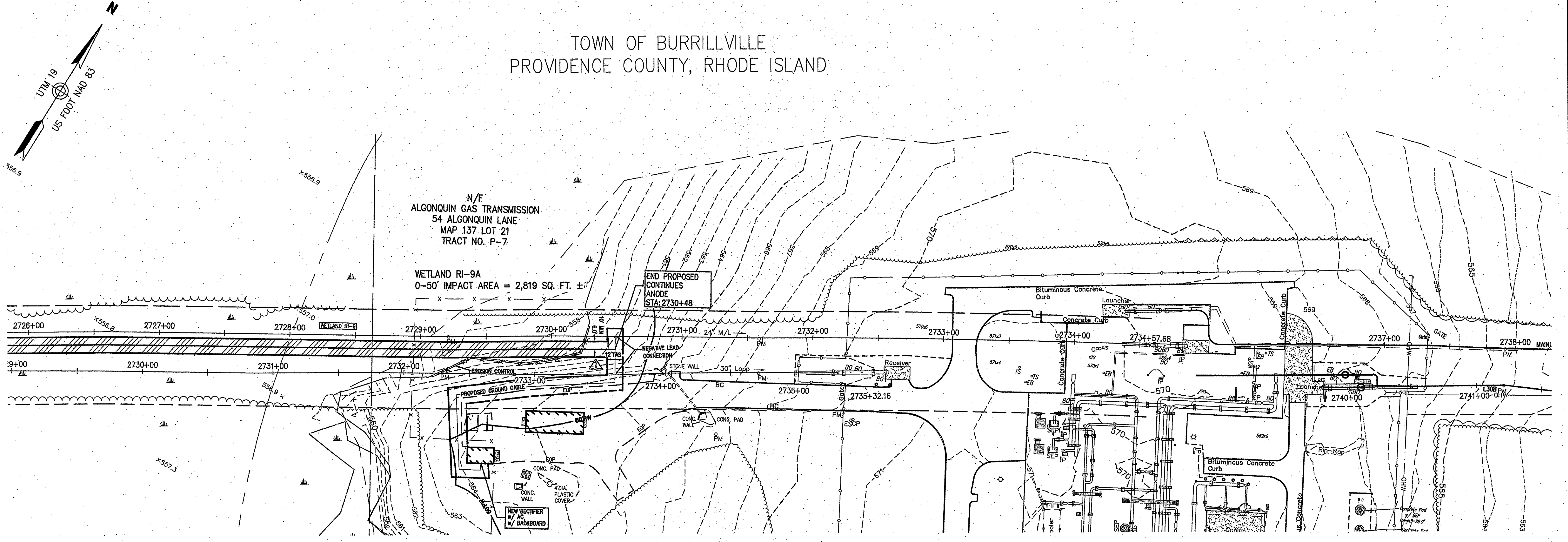
RIGHT-OF-WAY
 TRACT NUMBERS
 OWNERSHIP/AGENCY

SURVEY DATA
 SURVEY COMPANY: VHB INC.
 FIELD BOOK: NA
 PAGES: NA

TRACT P-7

- ALIGNMENT LEGEND**
- 12' WIDE TEMPORARY WORKSPACE (TWS)
 - VEGETATED WETLAND IMPACT
 - PROPERTY LINE
 - EXISTING AGT EASEMENT
 - PROPOSED ANODE
 - PROPOSED HEADER CABLE
 - 25' WIDE TEMPORARY WORKSPACE
 - MAINLINE
 - EXISTING AGT PIPELINE
 - DRAIN MANHOLE
 - CATCH BASIN
 - SEWER MANHOLE
 - ELECTRIC MANHOLE
 - TELEPHONE MANHOLE
 - MANHOLE
 - HAND HOLE
 - WATER GATE
 - FIRE HYDRANT
 - GAS GATE
 - STREET SIGN
 - LIGHT POLE
 - UTILITY POLE
 - GUY POLE
 - GUY WIRE
 - WELL
 - EDGE OF PAVEMENT
 - GUARD RAIL
 - CHAIN LINK FENCE
 - DRAINAGE LINE
 - OVERHEAD WIRE
 - UNDERGROUND ELECTRIC
 - STONE WALL
 - TREE LINE
 - CENTERLINE STREAM
 - VEGETATED WETLAND EDGE
 - 50-FT PERIMETER WETLAND
 - 100-FT RIVERBANK WETLAND
 - 200-FT RIVERBANK WETLAND
 - 100-YR FLOODWAY
 - 200-YR FLOOD PLAIN
 - EROSION CONTROL

MATCHLINE SEE SHEET (12 OF 16)



General Notes

1. THE PROPERTY LINES SHOWN ON THIS PLAN WERE COMPILED FROM LOCAL ASSESSOR'S PLATS AND ARE SHOWN GRAPHICALLY. VHB HAS NOT PERFORMED A FIELD SURVEY TO VERIFY THE PROPERTY LINES.
2. THE EXISTING CONDITIONS SHOWN ON THIS PLAN WERE DEVELOPED FROM A COMBINED EFFORT OF AERIAL PHOTOGRAMMETRIC MAPPING BY COL-EAST INC. BASED ON AERIAL PHOTOGRAPHS TAKEN ON MARCH 7, 2008, AND AUGMENTED BY AN ON-THE-GROUND SURVEY PERFORMED BY VHB DURING THE SUMMER OF 2014.
3. HORIZONTAL DATUM IS BASED ON UTM 19 PROJECTIONS, NAD 1983. VERTICAL DATUM IS BASED ON NAVD 1988
4. THE WETLANDS SHOWN ON THIS PLAN WERE DELINEATED AND LOCATED IN MAY 2014 BY TRC ENVIRONMENTAL CORP. THE LOCATIONS WERE PROVIDED BY TRC AS A SHAPE FILE. INTERMEDIATE CHECKS WERE CONDUCTED ALONG CORRIDOR AND VERIFIED APPROXIMATELY A 1-3 FOOT LINEAR ACCURACY OF THE FLAG LOCATIONS.
5. PROPOSED CONSTRUCTION AND TYPICALS WERE DESIGNED BY OTHERS AND ARE SHOWN FOR GRAPHICAL PURPOSES ONLY.

Construction Notes

1. ANY NECESSARY TRENCH DE-WATERING TO BE DIRECTED TO FILTER BAGS OR EQUIVALENT IN A MANNER SO AS NOT TO CAUSE EROSION/SEDIMENTATION.
2. CONTRACTOR TO COMPLY WITH ALL APPLICABLE PROVISIONS OF SPECTRA'S ENVIRONMENTAL CONSTRUCTION EROSION/SEDIMENTATION CONTROL PLAN.
3. THE FINAL IMPLEMENTATION AND LOCATION OF EROSION AND SEDIMENT CONTROLS WILL BE DETERMINED BY A SPECTRA INSPECTOR.
4. ANODE STATIONING IS BASED ON 24" MAINLINE.
5. THERE ARE NO PROPOSED GRADE CHANGES ASSOCIATED WITH THIS PROJECT. EXISTING GRADES SHALL BE RESTORED TO PRE-CONSTRUCTION CONDITIONS.
6. ANODE=MATORC SPL, 16MA/FT
 HEADER=#2/0 HMWPE
 0 NEGATIVE CONNECTIONS, #2AWG

SOILS:	
LAND USE:	
% SLOPE:	

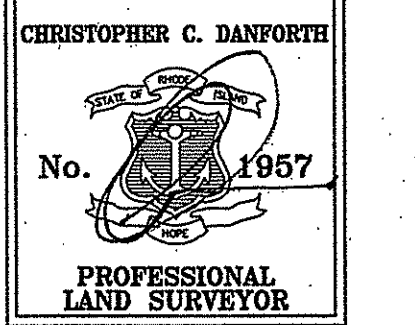
Kindly be advised that this Permit is not equivalent to a verification of the type or extent of freshwater wetlands on site.

DEPARTMENT OF ENVIRONMENTAL MANAGEMENT
 OFFICE OF WATER RESOURCES
 FRESHWATER WETLANDS PERMITS
 APPROVED WITH CONDITIONS
 AS SPECIFIED IN THE LETTER OF
 DATED 3.1.2015 FILE # 15-0130
 NO CHANGES ALLOWED WITHOUT PRIOR APPROVAL
 ADOPTED BY THE RHODE ISLAND BOARD OF REGISTRATION FOR PROFESSIONAL LAND SURVEYORS

Christopher C. Danforth
 JUN 2 2015
 Chief of Field Operations

THIS TOPOGRAPHIC SURVEY AND PLAN CONFORM TO A CLASS IV STANDARD AS ADOPTED BY THE RHODE ISLAND BOARD OF REGISTRATION FOR PROFESSIONAL LAND SURVEYORS. PROPERTY LINE INFORMATION IS NOT TO BE CONSTRUED AS AN ACTUAL BOUNDARY SURVEY AND IS SUBJECT TO SUCH CHANGES AS AN ACCURATE BOUNDARY SURVEY MAY DISCLOSE.

Christopher C. Danforth
 6/9/15
 CHRISTOPHER C. DANFORTH, P.L.S. #1957 DATE



NOT FOR CONSTRUCTION

DWG. NO.	DESCRIPTION	REV	DSN	CK	DESCRIPTION	ITEM NO.	DESCRIPTION	LN. FT.
256RI	ALIGNMENT CHAP-BURR M/L				UPDATE TWS FROM 15' TO 12'			
	REFERENCE DRAWINGS				REVISIONS		MATERIALS	



ENGINEERING APPROVALS				
DRAWN BY:	BID	CONSTRUCTION	SIGNATURE	DATE
SLT	8/14			

ALGONQUIN GAS TRANSMISSION, LLC
 MAINLINE AND L30B
 BORDER LINE TRAIL
 GROUND BED

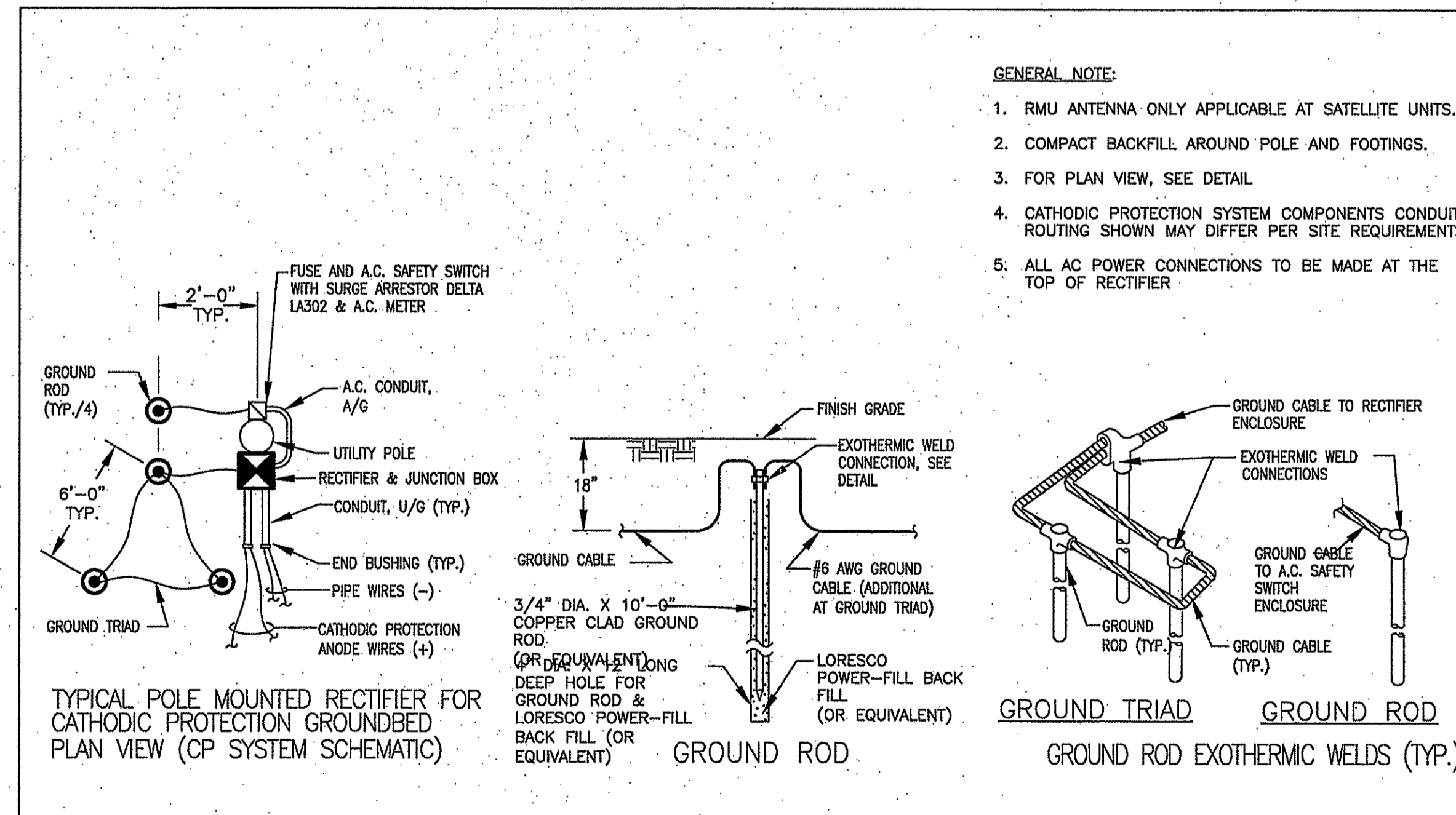
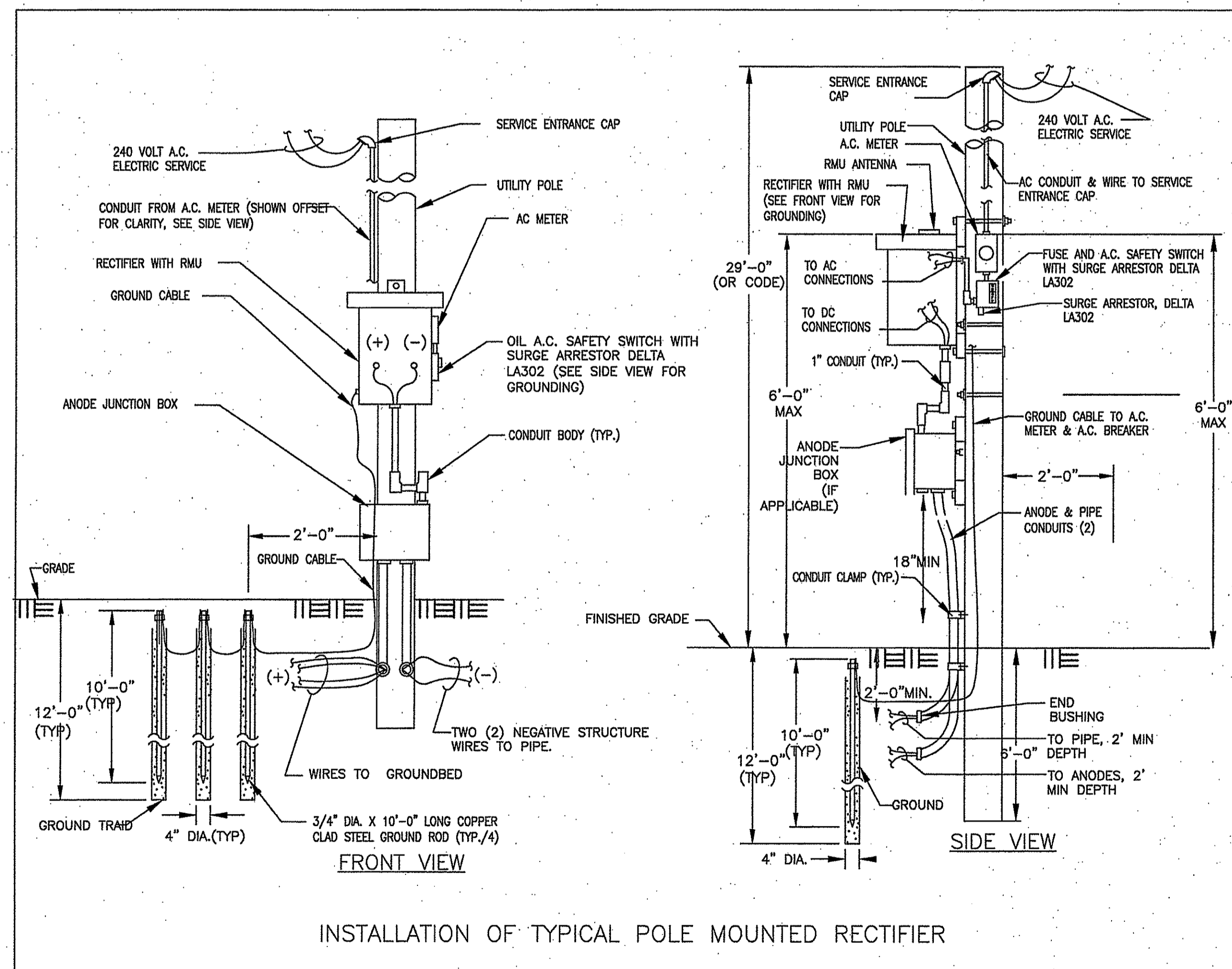
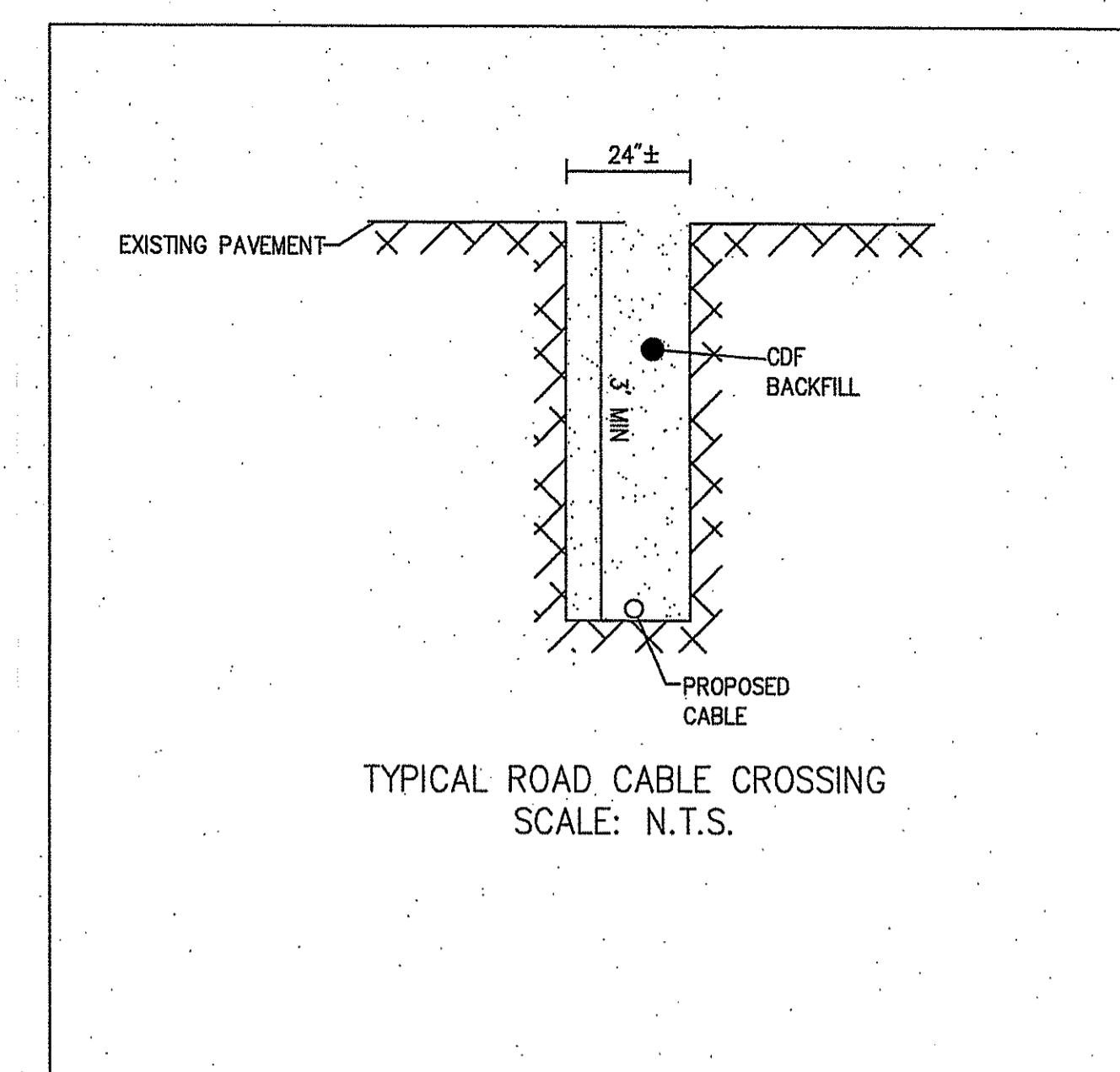
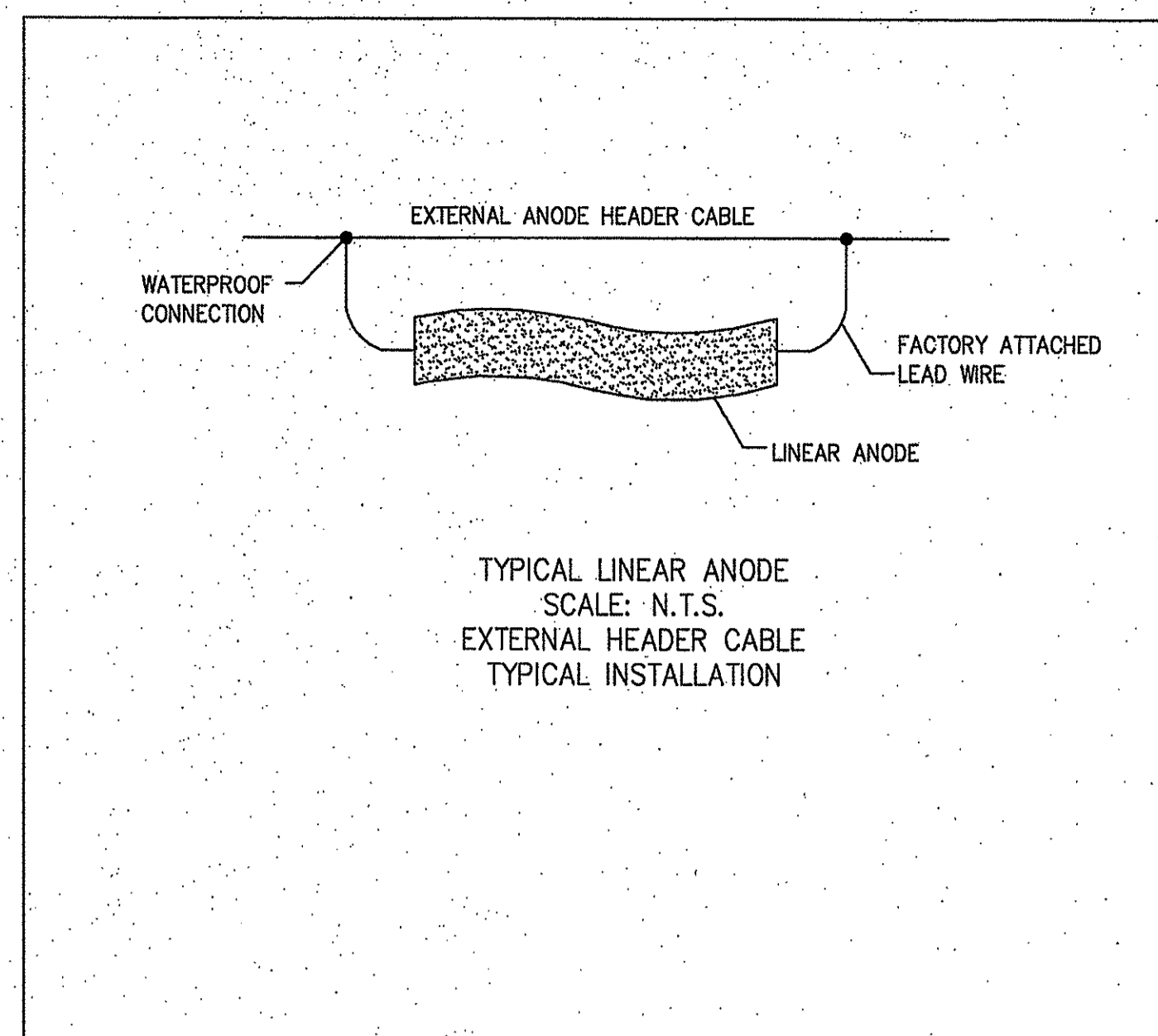
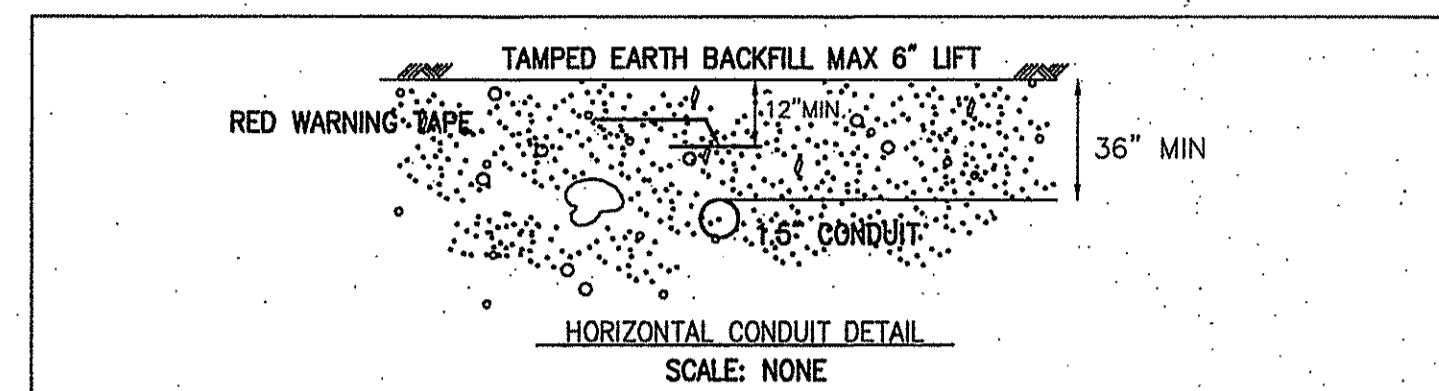
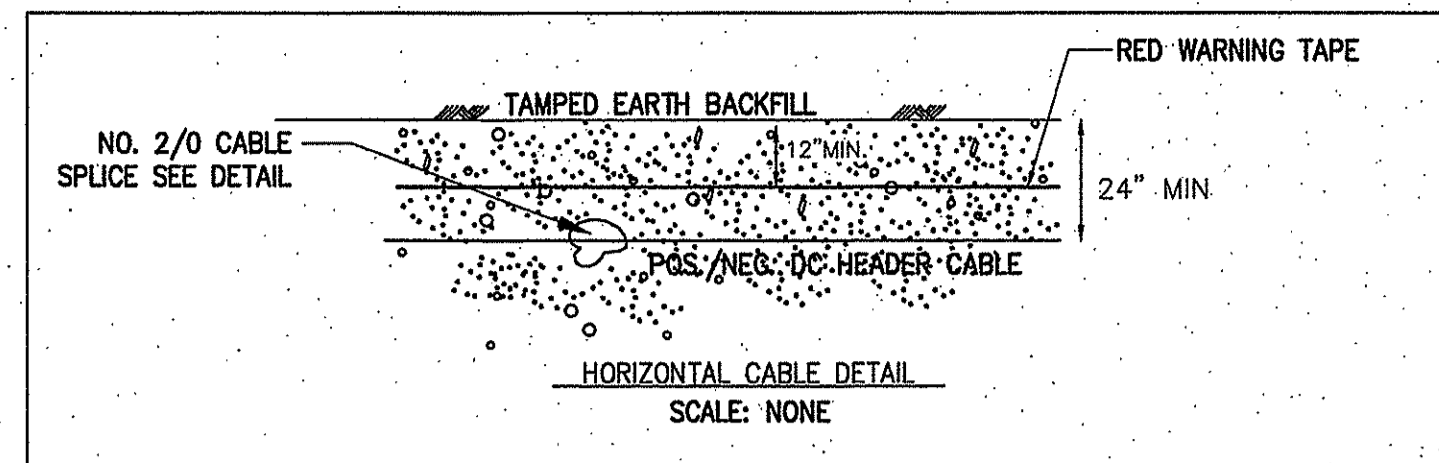
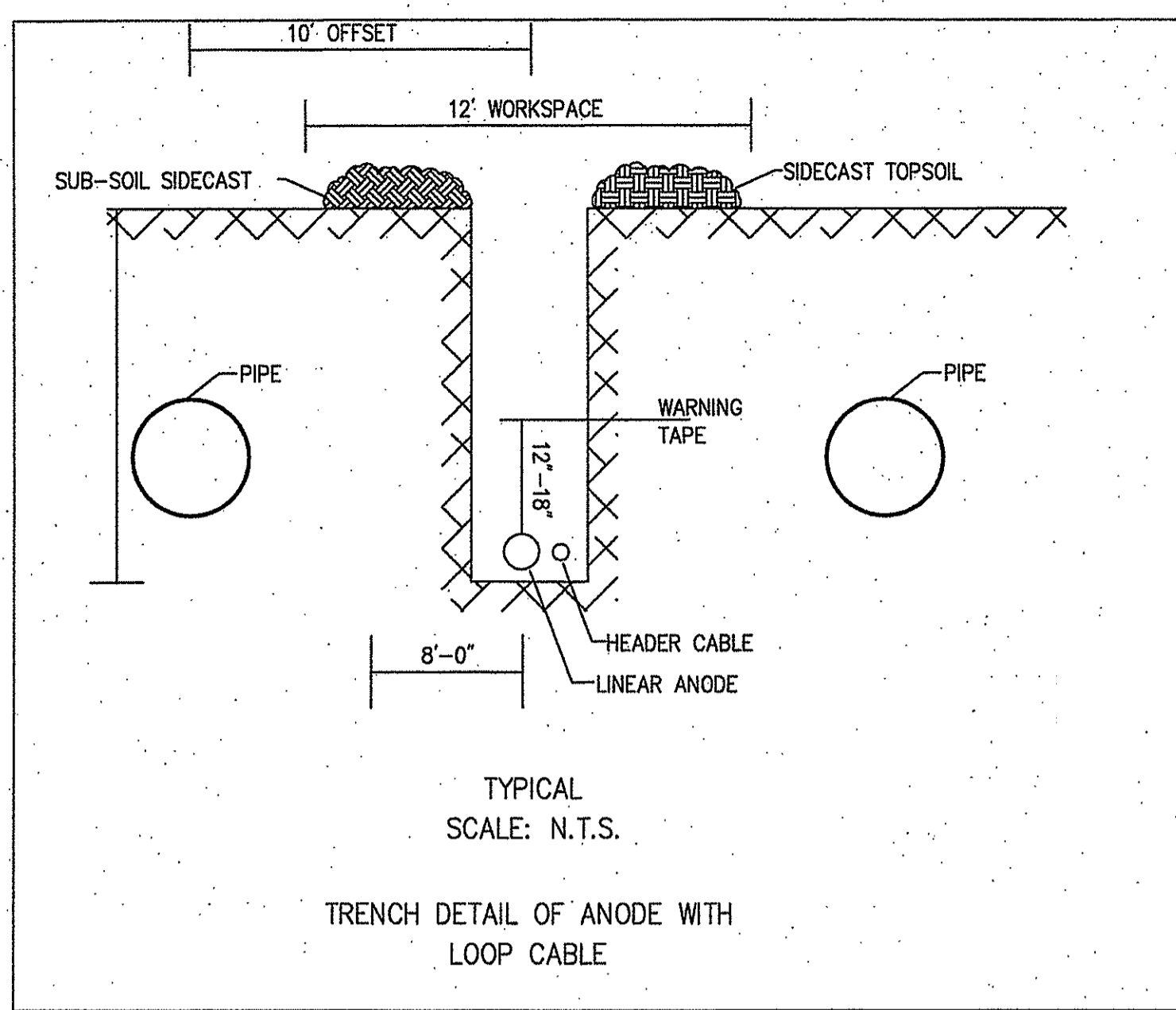
LOC.: PROVIDENCE COUNTY

YEAR: 2015 MC.400086.051.02 SCALE: 1"=40'

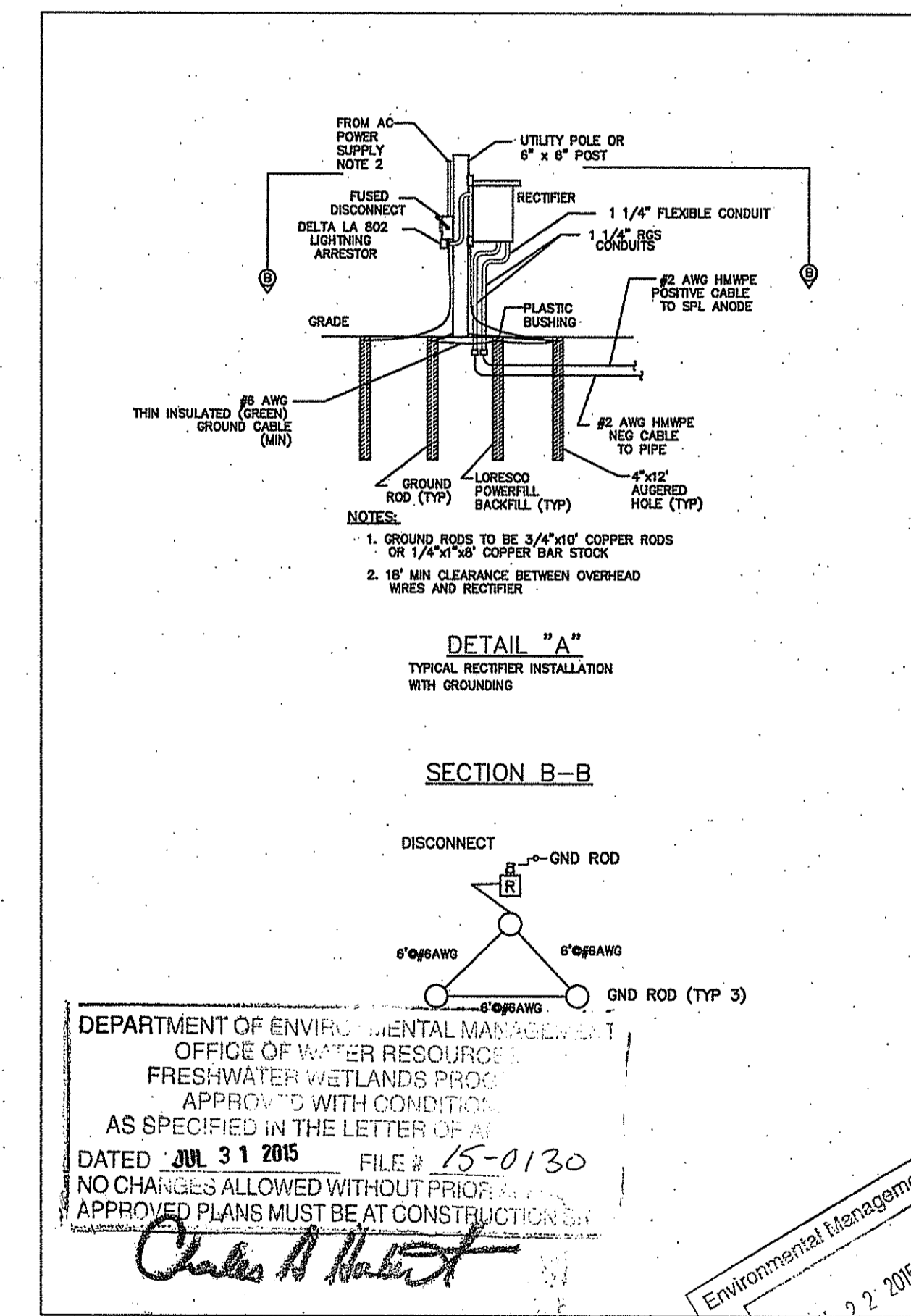
Spectra Energy
 Partners.

Algonquin Gas Transmission, LLC
 5400 Westheimer Ct. Houston, TX 77056-5310

DWG.:C-399A 13 OF 16 REV.: 1



- GENERAL NOTE:
1. RMU ANTENNA ONLY APPLICABLE AT SATELLITE UNITS.
 2. COMPACT BACKFILL AROUND POLE AND FOOTINGS.
 3. FOR PLAN VIEW, SEE DETAIL.
 4. CATHODIC PROTECTION SYSTEM COMPONENTS CONDUIT ROUTING SHOWN MAY DIFFER PER SITE REQUIREMENTS.
 5. ALL AC POWER CONNECTIONS TO BE MADE AT THE TOP OF RECTIFIER.



I:\Mowald\11500.63\cod\sr\plans\11500.63 EXIST.dwg - PLOT TIME: 6/8/2015 5:07 PM

DRAWN BY: SLT		ENGINEERING APPROVALS		ALGONQUIN GAS TRANSMISSION, LLC MAINLINE AND L30B BORDER LINE TRAIL DETAILS		Spectra Energy Partners	
DATE: 8/14		CONSTRUCTION		LOC.: PROVIDENCE COUNTY		Algonquin Gas Transmission, LLC 5450 Westheimer Ct. Houston, TX 77056-5310	
TITLE		SIGNATURE		YEAR: 2015		DWG.: C-399A 15 OF 16 REV.: 1	
DESCRIPTION		DATE		SCALE: 1"=40'		MC.400086.051.02	
REVISIONS		SIGNATURE		DATE		16	
ITEM NO.		DATE		DATE			
DESCRIPTION		DATE		DATE			
MATERIALS		DATE		DATE			
LN. FT.		DATE		DATE			
REFERENCE DRAWINGS		DATE		DATE			