

INDEX of DRAWINGS

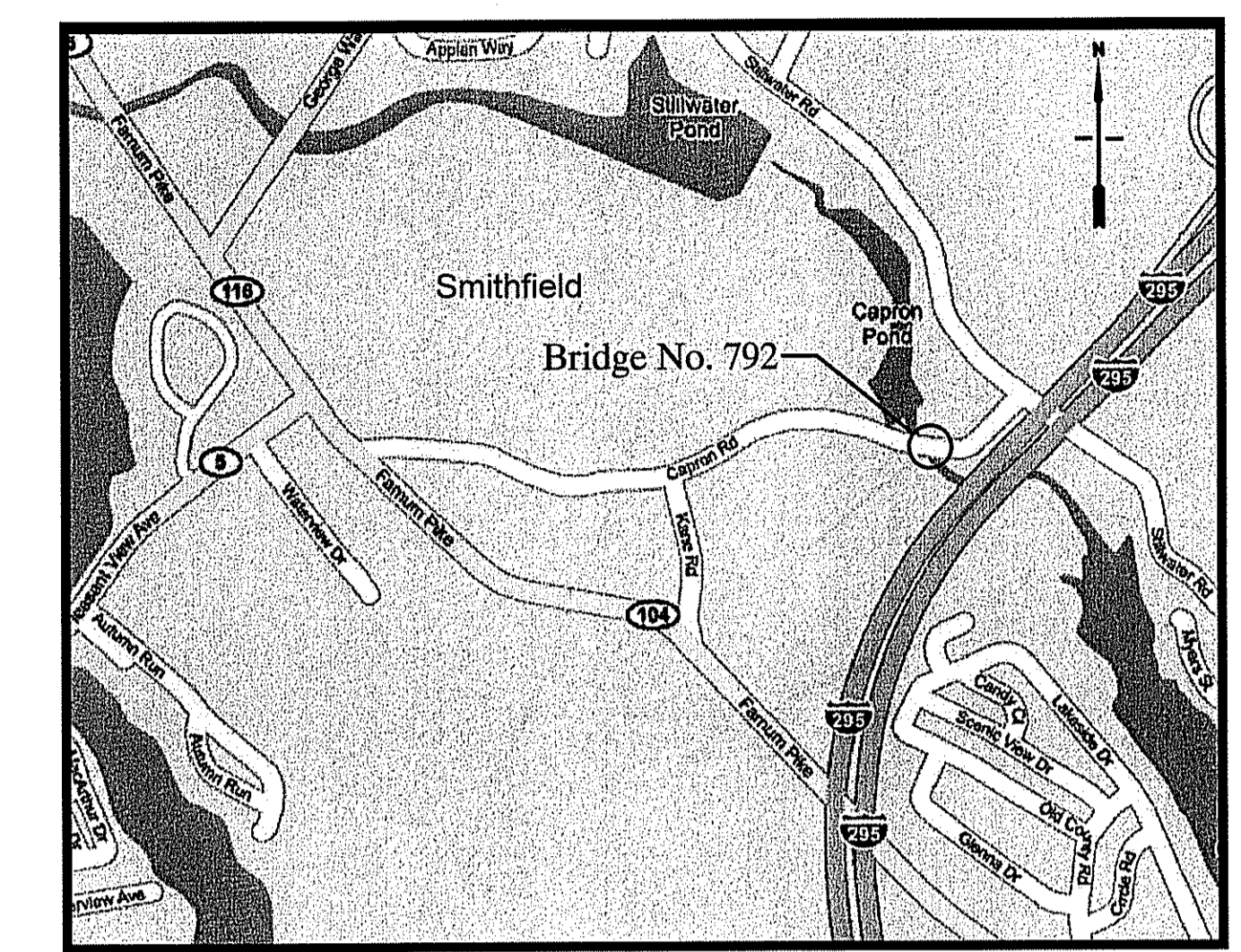
- 1. COVER SHEET
- 2. STANDARD PLAN SYMBOLS & STANDARD LEGEND
- 3. STANDARD NOTES - 1
- 4. STANDARD NOTES - 2
- 5. JOB SPECIFIC PLAN SYMBOLS, LEGEND, & NOTES
- 6. TYPICAL SECTION
- 7. GENERAL PLAN AND PROFILE
- 8. DRAINAGE AND UTILITY PLAN
- 9. GRADING PLAN
- 10. DETAILS - 1
- 11. DETAILS - 2
- 12. DEMOLITION PLAN AND SECTION
- 13. BRIDGE GENERAL PLAN
- 14. BRIDGE SECTIONS
- 15. BRIDGE ELEVATIONS
- 16. BRIDGE EROSION CONTROL PLAN
- 17. CONCEPTUAL TEMPORARY EARTH SUPPORT AND WATER DIVERSION PLAN
- 18. SUBSTRUCTURE SECTIONS AND DETAILS
- 19. BORING LOGS
- 20. BORING AND PROBE LOGS
- 21. ARCHAEOLOGICAL EXPLORATION PLAN

STATE OF RHODE ISLAND DEPARTMENT OF TRANSPORTATION

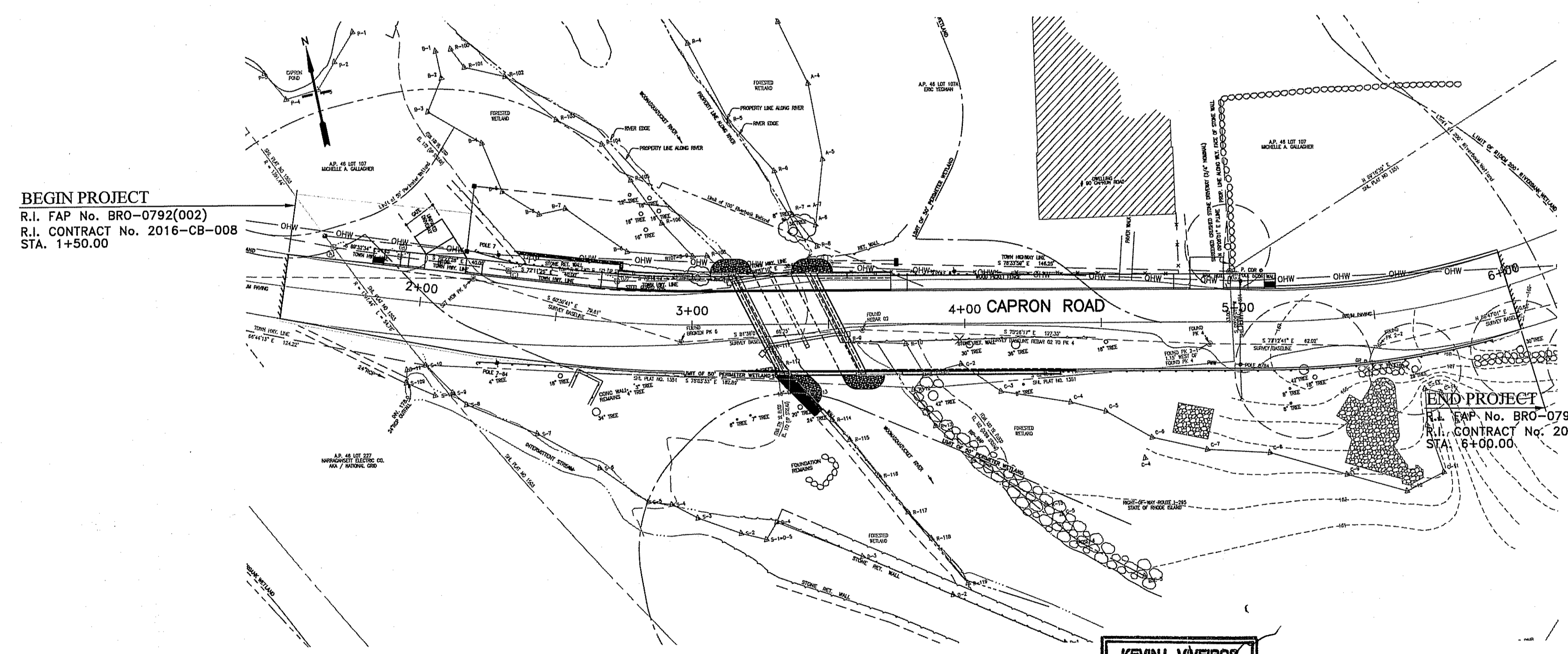
PLAN, PROFILE AND SECTIONS OF PROPOSED GROUP 70A REPLACEMENT OF CAPRON ROAD BRIDGE No. 792

CAPRON ROAD
SMITHFIELD, RHODE ISLAND
PROVIDENCE COUNTY

R.I. FEDERAL AID PROJECT No. BRO-0792(002)
R.I. CONTRACT No. 2016-CB-008
LENGTH = 0.1 MILE



LOCATION MAP
NOT TO SCALE



BEGIN PROJECT
R.I. FAP No. BRO-0792(002)
R.I. CONTRACT No. 2016-CB-008
STA. 1+50.00

END PROJECT
R.I. FAP No. BRO-0792(002)
R.I. CONTRACT No. 2016-CB-008
STA. 6+00.00

R.I. STANDARD SPECIFICATIONS

SPECIFICATIONS TO GOVERN THIS PROJECT ARE THE R.I. STANDARD SPECIFICATIONS FOR ROAD AND BRIDGE CONSTRUCTION, AMENDED MAY 2015, WITH ALL REVISIONS AND THE STATE AND FEDERAL SPECIAL PROVISIONS INCLUDED IN THE CONTRACT DOCUMENTS. STANDARD DETAILS FOR THIS PROJECT ARE R.I. STANDARD DETAILS, 1998 EDITION, WITH ALL REVISIONS.

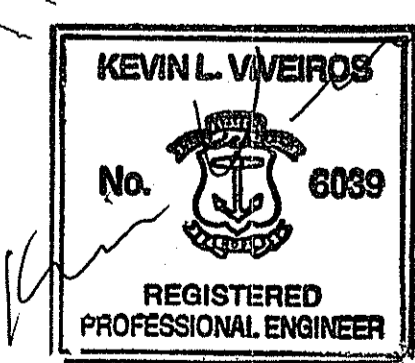
PLAN
SCALE: 1"=30'

SCALES OF DRAWINGS

Plans	1 inch = 20 feet
Profiles	1 inch = 20 feet Horizontal
Profiles	1 inch = 4 feet Vertical
Cross Sections	1 inch = 4 feet Horizontal
Cross Sections	1 inch = 4 feet Vertical

BASE OF LEVELS

VERTICAL DATUM USED: RHODE ISLAND STATE PLANE, NAVD 88
HORIZONTAL DATUM: RHODE ISLAND STATE PLANE, NAD 83



PERMIT SUBMISSION
FEBRUARY 2015
REVISED JANUARY 2016
REVISED APRIL 2016



PARE ENGINEERING CORPORATION
8 BLACKSTONE VALLEY PLACE
LINCOLN, RI 02865
401-334-4100

R.I. Contract Number 2016-CB-008
Plan Volume Number
Number of Sheet 1
Total Sheets 21

PAVEMENT COMPOSITION

2" HMA CLASS 12.5
5" HMA CLASS 19
(PLACED IN TWO 2.5" LIFTS)
12" GRAVEL BORROW SUBBASE

DESIGN DESIGNATION

AADT (2013) =	1,500 VPD
AADT (2033) =	1,850 VPD
DHV (2033) =	120 VPD
D =	52% / 48%
K =	8%
T =	1%
V =	35 MPH

HYDRAULIC DATA

DRAINAGE AREA	26.6 SQ. MILES
100-YEAR FLOOD EL. UPSTREAM FACE OF BRIDGE	172 FEET
100-YEAR FLOOD EL. DOWNSTREAM FACE OF BRIDGE	162 FEET
100-YEAR FLOOD PEAK DISCHARGE	1,660 CFS
100-YEAR FLOOD-FLOW VELOCITY	9.4 FPS

DEPARTMENT OF ENVIRONMENTAL MANAGEMENT
OFFICE OF WATER RESOURCES
FRESHWATER WETLANDS PROGRAM
APPROVED WITH CONDITIONS
AS SPECIFIED IN THE LETTER OF APPROVAL
DATED JUN 28 2016 FILE # 15-0139
NO CHANGES ALLOWED WITHOUT PRIOR APPROVAL
APPROVED PLANS MUST BE AT CONSTRUCTION SITE

R.I. DEPARTMENT OF TRANSPORTATION

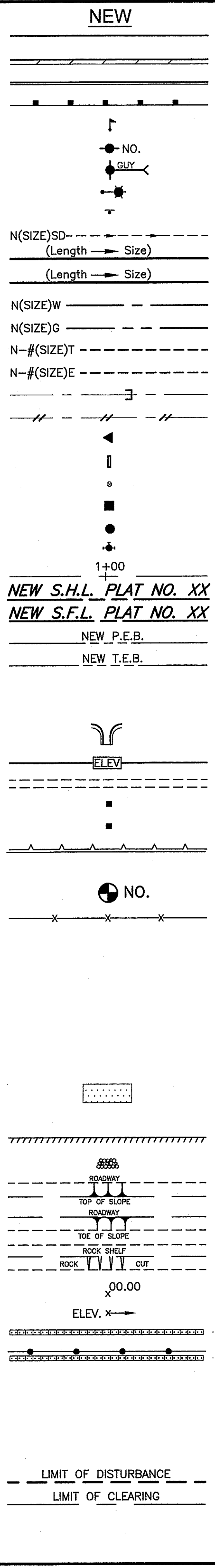
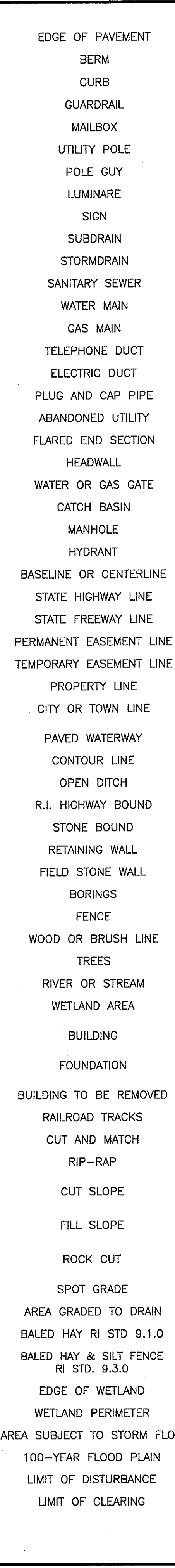
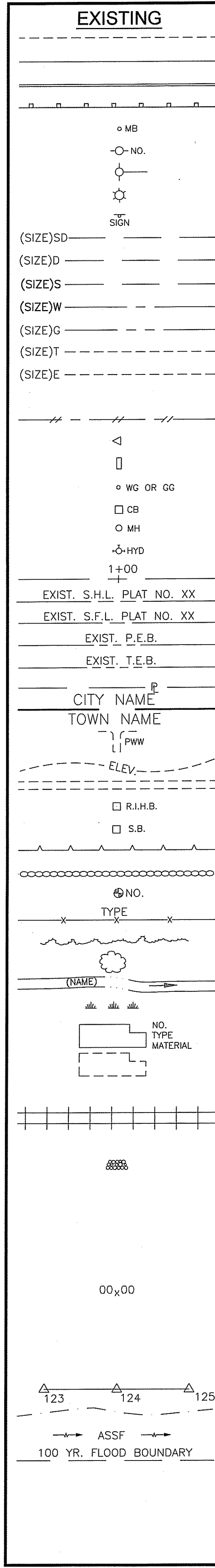
DEPUTY CHIEF ENGINEER	DATE
APPROVED	
CHIEF ENGINEER	DATE
APPROVED	
DIRECTOR	DATE

DEPARTMENT OF TRANSPORTATION
FEDERAL HIGHWAY ADMINISTRATION

APPROVED

DIVISION ADMINISTRATOR DATE

FED. ROAD DIV. NO.	STATE	FEDERAL AID PROJECT NO.	FISCAL YEAR	SHEET NO.	TOTAL SHEETS
1	RI	BRO-0792(002)		2	21



- (1.1.0) UNDERDRAIN
- (1.3.0) CONCRETE CONNECTING COLLAR
- (2.1.0) CONCRETE HEADWALLS FOR PIPE CULVERTS
- (2.2.0) STANDARD HEADWALLS FOR MULTIPLE 3'-6" TO 7'-0" PIPE CULVERTS
- (2.3.0) (DIA.) PRECAST CONCRETE FLARED END SECTION
- (3.2.0) BRICK/SOLID BLOCK 4'-0" ROUND MANHOLE
- (3.2.1) (DIA.) BRICK/SOLID BLOCK 5'-0" OR 6'-0" ROUND MANHOLE
- (3.3.0) BRICK/SOLID BLOCK TYPE "D" SQUARE CATCH BASIN
- (3.3.2) BRICK/SOLID BLOCK TYPE "F" SQUARE CATCH BASIN
- (3.3.3) SOLID BLOCK FLUSH SQUARE CATCH BASIN
- (3.4.0) BRICK/SOLID BLOCK TYPE "D" ROUND CATCH BASIN
- (3.4.1) BRICK/SOLID BLOCK ROUND CATCH BASIN WITH GUTTER INLET
- (3.4.2) BRICK/SOLID BLOCK TYPE "F" ROUND CATCH BASIN
- (3.4.3) BRICK/SOLID BLOCK TYPE "R" CATCH BASIN
- (3.4.4) SOLID BLOCK FLUSH ROUND CATCH BASIN
- (3.4.5) (DIA.) BRICK/SOLID BLOCK 5'-0" OR 6'-0" ROUND CATCH BASIN
- (3.5.0) SOLID BLOCK SHALLOW TYPE "F" SQUARE CATCH BASIN
- (3.5.1) (SIZE) SOLID BLOCK SHALLOW 5'-0" OR 6'-0" SQUARE CATCH BASIN
- (3.6.0) BRICK/SOLID BLOCK DROP INLET
- (3.7.0) (DIA.) BRICK/SOLID BLOCK ROUND MANHOLE OR CATCH BASIN GREATER THAN 12'-0"
- (4.2.0) PRECAST 4'-0" ROUND MANHOLE
- (4.2.1) PRECAST 5'-0" ROUND MANHOLE
- (4.2.2) PRECAST 6'-0" ROUND MANHOLE
- (4.3.0) (SIZE) PRECAST 4'-0" OR 6'-0" SQUARE MANHOLE OR CATCH BASIN
- (4.4.0) (DIA.) PRECAST 4'-0", 5'-0", OR 6'-0" ROUND CATCH BASIN
- (4.5.0) PRECAST CONCRETE DROP INLET
- (4.5.1) PRECAST CONCRETE DROP INLET LATERAL OUTLET
- (4.5.2) PRECAST CONCRETE DROP INLET LONGITUDINAL OUTLET
- (5.3.0) CATCH BASIN AND MANHOLE STEP
- (5.4.0) CONCRETE COLLARS
- (6.1.0) LIGHT-DUTY SQUARE FRAME AND ROUND COVER
- (6.1.1) HEAVY DUTY SQUARE FRAME AND ROUND COVER
- (6.2.0) LIGHT-DUTY ROUND FRAME AND COVER
- (6.2.1) HEAVY-DUTY ROUND FRAME AND COVER
- (6.3.0) SQUARE FRAME AND GRATE
- (6.3.1) SQUARE FRAME AND GRATE
- (6.3.2) SQUARE FRAME AND GRATE (BICYCLE SAFE)
- (6.3.3) HIGH CAPACITY FRAME AND GRATE
- (6.3.4) HIGH CAPACITY FRAME AND GRATE (BICYCLE SAFE)
- (6.4.0) ROUND FRAME AND GRATE
- (7.1.0S) PRECAST CONCRETE CURB (STRAIGHT)
- (7.1.0C) PRECAST CONCRETE CURB (CIRCULAR)
- (7.1.1) 3'-0" PRECAST CONCRETE TRANSITION CURB
- (7.1.2) 6'-0" PRECAST CONCRETE TRANSITION CURB
- (7.1.4) PRECAST 2'-0" RADIUS CORNER
- (7.1.5) PRECAST CONCRETE INLET STONE (FOR SQUARE CATCH BASIN)
- (7.1.6) PRECAST CONCRETE INLET STONE (FOR ROUND CATCH BASIN)
- (7.1.7) PRECAST CONCRETE APRON STONE (FOR SQUARE CATCH BASIN)
- (7.1.8) PRECAST CONCRETE APRON STONE (FOR ROUND CATCH BASIN)
- (7.2.0S) PRECAST CONCRETE SLOPED FACE CURB (STRAIGHT)
- (7.2.0C) PRECAST CONCRETE SLOPED FACE CURB (CIRCULAR)
- (7.2.1) PRECAST CONCRETE SLOPED FACE TRANSITION CURB
- (7.2.2) PRECAST CONCRETE TRANSITION CURB (VERTICAL FACE TO SLOPED FACE)
- (7.3.0S) GRANITE CURB (STRAIGHT)
- (7.3.0C) GRANITE CURB (CIRCULAR)
- (7.3.1) 3'-0" GRANITE TRANSITION CURB
- (7.3.2) 6'-0" GRANITE TRANSITION CURB
- (7.3.3) GRANITE WHEELCHAIR RAMP TRANSITION CURB
- (7.3.4) GRANITE 2'-0" RADIUS CORNER
- (7.3.5) GRANITE INLET STONE (FOR SQUARE CATCH BASIN)
- (7.3.6) GRANITE INLET STONE (FOR ROUND CATCH BASIN)
- (7.3.7) GRANITE APRON STONE (FOR SQUARE CATCH BASIN)
- (7.3.8) GRANITE APRON STONE (FOR ROUND CATCH BASIN)
- (7.4.0) GRANITE SLOPED FACE CURB
- (7.4.1) GRANITE SLOPED FACE TRANSITION CURB

- (7.4.2) GRANITE TRANSITION CURB (VERTICAL FACE TO SLOPE FACE)
- (7.5.0) BITUMINOUS CONCRETE LIP CURB
- (7.5.1A) BITUMINOUS BERM (CONSTRUCTION METHOD A)
- (7.5.1B) BITUMINOUS BERM (CONSTRUCTION METHOD B)
- (7.6.0) CURB SETTING DETAIL
- (8.2.0) BITUMINOUS CONCRETE DITCH
- (8.3.0) RIP-RAP DITCH
- (8.4.0) PAVED WATERWAY
- (9.1.0) BALED HAY EROSION CHECK
- (9.2.0) SILT FENCE DETAIL
- (9.3.0) BALED HAY DITCH EROSION CHECK AND SILT FENCE COMBINED
- (9.4.0) BALED HAY DITCH AND SWALE EROSION CHECK
- (9.5.0) LOG AND HAY CHECK DAM
- (9.7.0) DEWATERING BASIN
- (9.8.0) BALED HAY CATCH BASIN INLET PROTECTION
- (9.9.0) CONSTRUCTION ACCESS
- (10.1.0) WET STONE MASONRY RETAINING WALL
- (10.2.0) RUBBLE MASONRY WALL
- (10.3.0) CONCRETE RETAINING WALL
- (10.4.0) STONE MASONRY STEPS
- (14.1.0) CONCRETE HIGHWAY BOUND
- (15.1.0) POST AND MOUNTINGS FOR RURAL MAILBOX
- (15.2.0) (NO.) POST AND MULTIPLE MOUNTINGS FOR RURAL MAILBOXES
- (18.2.0) PRECAST TYPE "A" HANDHOLE
- (18.2.2) HEAVY DUTY TYPE "H" HANDHOLE
- (18.3.0) ALUMINUM LIGHTING STANDARDS
- (20.2.0) BI-DIRECTIONAL CONTROL DEVICE
- (24.6.1) STREET SIGN MOUNTING DETAIL
- (26.2.0) POLYETHYLENE DRUM WITH MARKINGS
- (26.3.0) PVC PLASTIC PIPE TYPE III BARRICADE
- (31.1.0) CHAIN LINK FENCE 3'-0" TO 4'-0"
- (31.2.0) CHAIN LINK FENCE 5'-0" TO 6'-0"
- (31.2.1) CHAIN LINK FENCE 5'-0" TO 6'-0" INTERMEDIATE POST
- (31.3.0) WOVEN WIRE RIGHT-OF-WAY FENCE (STEEL POST)
- (34.1.0) TYPICAL GUARDRAIL INSTALLATION
- (34.2.0) STEEL BEAM GUARDRAIL
- (34.2.1) STEEL BEAM GUARDRAIL DETAILS
- (34.2.2) STEEL BEAM GUARDRAIL DOUBLE FACED ASSEMBLY
- (34.2.3) STEEL BEAM GUARDRAIL FIXTURES
- (34.2.5) STEEL BEAM GUARDRAIL REFLECTORIZED TRIANGULAR DELINEATOR
- (34.3.1) GUARDRAIL END SECTION
- (34.3.2) TERMINAL END SECTION (SINGLE FACE)
- (34.3.3) ANCHORAGE DETAILS APPROACH END SECTION
- (34.3.4) ANCHORAGE DETAILS TRAILING END SECTION
- (34.4.0) STEEL BACKED TIMBER GUARDRAIL
- (34.4.1) STEEL BACKED TIMBER GUARDRAIL TERMINAL SECTION-TYPE 1
- (40.1.0) DOUBLE-FACED PRECAST MEDIAN BARRIER
- (40.2.0) SINGLE-FACED PRECAST MEDIAN BARRIER
- (40.2.1) SINGLE-FACED PRECAST MEDIAN BARRIER
- (40.3.0) PRECAST MEDIAN BARRIER TRANSITION UNIT
- (40.5.0) PRECAST MEDIAN BARRIER FOR TEMPORARY TRAFFIC CONTROL
- (43.1.0) CEMENT CONCRETE SIDEWALK
- (43.2.0) BITUMINOUS CONCRETE SIDEWALK
- (43.3.0) WHEELCHAIR RAMP
- (43.3.1) WHEELCHAIR RAMP FOR LIMITED RIGHT-OF-WAY AREAS
- (43.4.0) DRIVEWAY DEVELOPMENT FOR 3'-0" TRANSITION CURB
- (43.4.1) DRIVEWAY DEVELOPMENT FOR 6'-0" TRANSITION CURB
- (43.5.0) CEMENT CONCRETE DRIVEWAYS
- (48.1.0) DETECTABLE WARNING SYSTEM
- (51.1.0) TREE PROTECTION DEVICE
- (51.1.1) DRIP LINE TREE PROTECTION DEVICE FOR EXISTING TREES
- (51.2.0) SHRUB PROTECTION DEVICE
- (51.3.0) TREE WELL
- (51.4.0) TREE WALL

- (AB) ADJUST CATCH BASIN TO GRADE
- (ABM) ADJUST CATCH BASIN TO MANHOLE
- (AC) ADJUST CURB STOP TO GRADE
- (AD) ADJUST DRAINAGE MANHOLE TO GRADE
- (AE) ADJUST ELECTRIC MANHOLE TO GRADE
- (AFC) ADJUST FRAME AND COVER TO GRADE
- (AFG) ADJUST FRAME AND GRATE TO GRADE
- (AG) ADJUST GAS GATE BOX TO GRADE
- (AHH) ADJUST HANDHOLE TO GRADE
- (AS) ADJUST SANITARY SEWER MANHOLE TO GRADE
- (AT) ADJUST TELEPHONE MANHOLE TO GRADE
- (AW) ADJUST WATER GATE BOX TO GRADE
- (BCD) BITUMINOUS CONCRETE DRIVEWAY 3" BITUMINOUS CONCRETE TYPE I-1 8" GRAVEL BORROW SUBBASE COURSE
- (BPS) BUILD NEW STRUCTURE OVER EXISTING PIPE
- (CCB) CLEAN CATCH BASIN
- (CCP) CUT AND CAP PIPE WITH RESTRAINT (ALL SIZES)
- (CFP) CLEAN AND FLUSH PIPE
- (CG) CLEARING AND GRUBBING
- (CMH) CLEAN MANHOLE
- (CP) (DEPTH) COLD PLANE
- (CPP) CUT AND PLUG PIPE (ALL TYPES, ALL SIZES)
- (DB) REMOVE AND DISPOSE BITUMINOUS CURB
- (DC) REMOVE AND DISPOSE CONCRETE CURB
- (DCB) REMOVE AND DISPOSE CATCH BASIN
- (DDI) REMOVE AND DISPOSE DROP INLET
- (DF) REMOVE AND DISPOSE FENCE
- (DFC) REMOVE AND DISPOSE FRAME AND COVER
- (DFE) REMOVE AND DISPOSE FLARED END SECTION
- (DFG) REMOVE AND DISPOSE FRAME AND GRATE
- (DFH) REMOVE AND DISPOSE FIRE HYDRANT
- (DFP) REMOVE AND DISPOSE FLEXIBLE PAVEMENT
- (DG) REMOVE AND DISPOSE GUARDRAIL
- (DH) REMOVE AND DISPOSE HEADWALL
- (DHB) REMOVE AND DISPOSE HIGHWAY BOUND
- (DHH) REMOVE AND DISPOSE HANDHOLE
- (DL) REMOVE AND DISPOSE LIGHT AND FOUNDATION
- (DMB) REMOVE AND DISPOSE MEDIAN BARRIER
- (DMH) REMOVE AND DISPOSE MANHOLE
- (DMM) REMOVE AND DISPOSE MEDIAN MARKER
- (DOW) REMOVE AND DISPOSE OBSERVATION WELL
- (DP) REMOVE AND DISPOSE PIPE
- (DPB) REMOVE AND DISPOSE PAVEMENT AND RIGID BASE
- (DRB) REMOVE AND DISPOSE RIGID BASE
- (DS) REMOVE AND DISPOSE SIGN
- (DSS) REMOVE AND DISPOSE TRAFFIC SIGNAL SYSTEM
- (DSW) REMOVE AND DISPOSE SIDEWALK
- (DTD) REMOVE AND DISPOSE TELEPHONE DUCT BANKS
- (DUP) REMOVE AND DISPOSE UTILITY POLE
- (DWW) REMOVE AND DISPOSE PAVED WATERWAY
- (FF) FILTER FABRIC RIPRAP FLARED END UNDERLAYMENT
- (GET) FLARED GUARDRAIL END TREATMENT
- (IA) IMPACT ATTENUATOR
- (IDL) IMPERVIOUS DITCH LINER
- (LOD) LIMIT OF DISTURBANCE
- (LOR) LIMIT OF REGRADING
- (LS) 4" LOAM AND SEED

NO.	DATE	BY
1	6/07	TRB

RHODE ISLAND DEPARTMENT OF TRANSPORTATION

REPLACEMENT OF CAPRON BRIDGE No. 792

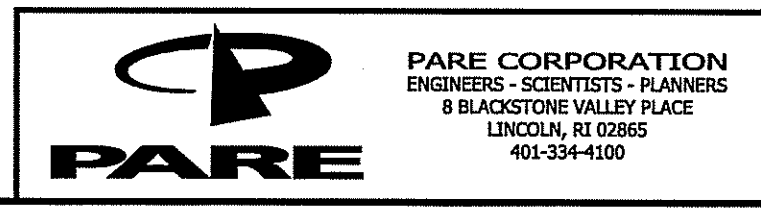
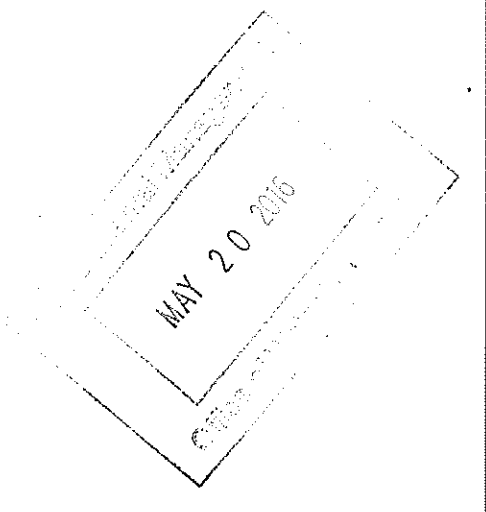
SMITHFIELD, RHODE ISLAND

STANDARD PLAN SYMBOLS & STANDARD LEGEND

CHECKED BY _____ DATE _____ SCALE NA

DEPARTMENT OF ENVIRONMENTAL MANAGEMENT
OFFICE OF WATER RESOURCES
FRESHWATER WETLANDS PROGRAM
APPROVED WITH CONDITIONS
AS SPECIFIED IN THE LETTER OF APPROVAL
DATED JUN 28 2016 FILE # 15-0197
NO CHANGES ALLOWED WITHOUT PRIOR APPROVAL
APPROVED PLANS MUST BE AT CONSTRUCTION SITE

Charles H. Hackett



JOB SPECIFIC PLAN SYMBOLS

EXISTING	PROPOSED
— OHW — OHW —	— OHW — OHW —
TEMPORARY EARTH SUPPORT	-----
OVERHEAD WIRES	— OHW — OHW —
WATER CONTROL SYSTEM (SEE EROSION CONTROL PLANS)	-----
COMPOST FILTER SOCK	=====
BORING LOCATION	B-#
PROBE LOCATION	• P#
TEST PIT LOCATION	TP-#

JOB SPECIFIC GENERAL LEGEND

R.I. STD. No.	
3.2.2M	SOLID BLOCK SHALLOW 5'-0" SQUARE MANHOLE
4.7.0	TOP COVER FOR 4'-0" OR 6'-0" SQUARE CATCH BASINS AND MANHOLES
6.3.2M	SQUARE FRAME AND GRATE 6" HIGH (BICYCLE SAFE)
7.5.1A	BITUMINOUS CONCRETE BERM (CONSTRUCTION METHOD A) WITH CLASS 12.5 HMA
BCD	BITUMINOUS CONCRETE DRIVEWAY 3" BITUMINOUS CONCRETE CLASS 12.5 8" GRAVEL BORROW SUBBASE COURSE
CFS	COMPOST FILTER SOCK
DPO	REMOVE AND DISPOSE UTILITY POLE (BY OTHERS)
DT	REMOVE AND DISPOSE EXISTING TREE
ETEA	GUARDRAIL END TREATMENT - ENERGY ABSORBING
ETNA	GUARDRAIL END TREATMENT - NON-ENERGY ABSORBING
GTC	6'-0" GRANITE TRANSITION CURB (13" TO 0" REVEAL) (SEE "END POST DETAILS" SHEET)
P	BITUMINOUS CONCRETE PAVEMENT 2" HMA CLASS 12.5 5" HMA CLASS 19 (PLACED IN TWO 2.5" LIFTS) 12" GRAVEL BORROW SUBBASE ASPHALT EMULSION TACK COAT AS REQUIRED PER GENERAL NOTE 7 OF "STANDARD NOTES - 1" SHEET
NPO	NEW UTILITY POLE (BY OTHERS)
RF	REMOVE AND RESET FENCE

JOB SPECIFIC GENERAL NOTES:

GENERAL NOTES:

- CLASS III EXISTING CONDITIONS SURVEY WAS PREPARED BY GILBERT & MALONEY, ENGINEERS & LAND SURVEYORS, PROVIDENCE, RHODE ISLAND ON MAY 12, 2003 AND UPDATED TO NAVD 1988 ON FEBRUARY 7, 2014.
- THE ENTIRE PROJECT AREA IS WITHIN RI DEM JURISDICTIONAL AREAS.
- 100-YEAR FLOOD ELEVATIONS WERE OBTAINED FROM THE FLOOD INSURANCE STUDY FOR THE TOWN OF SMITHFIELD, RHODE ISLAND, AND THE FLOOD INSURANCE RATE MAP FOR PROVIDENCE COUNTY RHODE ISLAND (COMMUNITY PANEL 44007C 0169H DATED OCTOBER 2, 2015), PREPARED BY FEDERAL EMERGENCY MANAGEMENT AGENCY. THE 100-YEAR FLOOD ELEVATION DIRECTLY UPSTREAM FROM THE BRIDGE IS 172.0 FT. AND DOWNSTREAM IS 162.0 FT. (NAVD 88).
- WETLAND DELINEATION WAS PERFORMED BY PARE CORPORATION ON NOVEMBER 8, 2011. WETLAND FLAG LOCATION SURVEY WAS PERFORMED BY PARE CORPORATION USING A HANDHELD GPS DEVICE WITH SUBMETER ACCURACY.
- CONSTRUCTION EQUIPMENT SHALL NOT BE ALLOWED IN THE WATERWAY.
- THE CONTRACTOR SHALL BE AWARE OF THE PRESENCE OF OVERHEAD UTILITIES AND SHALL PLAN CONSTRUCTION ACTIVITIES AND EQUIPMENT ACCORDINGLY.
- ALL GRASSED AREAS DISTURBED BY THE CONTRACTOR'S OPERATIONS SHALL BE REESTABLISHED WITH LOAM AND TYPE 2 SEED. IF AREAS ARE BEYOND WORK LIMIT LINES, THEN THE COST SHALL BE BORNE BY THE CONTRACTOR.
- ANY TREE CUTTING AND TRIMMING WORK SHALL BE PROVIDED THROUGH THE STATEWIDE TREE TRIMMING CONTRACT. THE CONTRACTOR SHALL COORDINATE THIS WORK WITH THE RESIDENT ENGINEER DURING CONSTRUCTION.
- THERE SHALL BE NO PARKING OR STORING OF CONSTRUCTION EQUIPMENT UNDER THE DRIP LINE OF ANY TREES.
- ALL STEEL BEAM GUARDRAIL TO BE INSTALLED AS PART OF THIS CONTRACT SHALL NOT BE FURNISHED WITH RUB RAIL.
- POST SPACINGS FOR GUARDRAIL INSTALLATION ALONG BRIDGE END WALLS SHALL BE IN ACCORDANCE WITH END POST DETAILS SHEETS 1 AND 2.

EROSION CONTROL NOTES:

- ALL EROSION AND SEDIMENT CONTROL MATERIALS AND METHODS ARE TO BE PROVIDED IN ACCORDANCE WITH THE RHODE ISLAND EROSION AND SEDIMENT CONTROL HANDBOOK AND THE RHODE ISLAND STANDARD DETAILS.
- THE TYPES AND LOCATIONS OF THE EROSION CONTROL BARRIERS MAY BE ADJUSTED SLIGHTLY TO ACCOMMODATE FIELD CONDITIONS.
- IN ACCORDANCE WITH THE PROJECT SWPPP, ALL CONSTRUCTION PHASE EROSION CONTROLS SHALL BE INSPECTED AT LEAST ONCE EVERY SEVEN (7) CALENDAR DAYS AND WITHIN TWENTY-FOUR (24) HOURS AFTER ANY STORM EVENT THAT GENERATES AT LEAST 0.25 INCHES OF RAIN IN A TWENTY-FOUR (24) HOUR PERIOD. THE INSPECTOR SHALL NOTE AREAS OF EROSION AND SEDIMENT MIGRATION, AS WELL AS THE CONDITION AND EFFECTIVENESS OF THE STORMWATER CONTROLS. THE CONTRACTOR IS REQUIRED TO DESIGNATE A SWPPP CONTACT WITH THE AUTHORITY TO DIRECT REQUIRED CORRECTIVE ACTIONS DURING CONSTRUCTION.
- ACCUMULATED SEDIMENTS SHALL BE EXCAVATED AND BE PROPERLY DISPOSED WHEN THE HEIGHT OF THE SEDIMENT EXCEEDS ONE HALF (1/2) THE HEIGHT OF THE COMPOST FILTER SOCK FIBER ROLL.
- COMPOST FILTER SOCKS SHALL BE REPLACED EVERY SIX (6) MONTHS, AT A MINIMUM, AND MORE FREQUENTLY IF NECESSARY. ANY DAMAGED COMPOST FILTER SOCKS SHALL BE PROMPTLY REPLACED.
- JUTE MESH SHALL BE PLACED ON ALL SLOPES GREATER THAN 3:1. THIS INCLUDES THE INSIDE OF THE BIORETENTION BASIN.
- STOCKPILES OF MATERIAL SHALL NOT BE LOCATED WITHIN BIOLOGICAL WETLANDS, OR STANDING OR FLOWING WATER BODIES. THEY SHALL HAVE SIDE SLOPES NO GREATER THAN 30% AND STOCKPILES OF ERODABLE MATERIAL SHALL ALSO BE SEEDED AND RINGED WITH R.I. STD. 9.1.0 TO STABILIZE. THIS NOTE SUPERCEDES "DRAINAGE AND EROSION CONTROL NOTE 3" ON "STANDARD NOTES - 1" SHEET.

CONTROL OF WATER WORK SEQUENCE:

- REMOVE AND DISPOSE SUPERSTRUCTURE.
- REMOVE CENTRAL PIER TO MUD LINE.
- INSTALL TEMPORARY EARTH SUPPORT/WATER DIVERSION (SEE "CONCEPTUAL TEMPORARY EARTH SUPPORT AND WATER DIVERSION PLAN" SHEET).

WETLANDS LEGEND

-----	= LIMIT OF 200' RIDEM RIVERBANK WETLAND
-----	= LIMIT OF 50' PERIMETER WETLAND
-----	= LIMIT OF 100-YEAR FLOOD PLAIN
▲	= EDGE OF WETLAND AND EDGE OF RIVER

DEPARTMENT OF ENVIRONMENTAL MANAGEMENT
OFFICE OF WATER RESOURCES
FRESHWATER WETLANDS PROGRAM
APPROVED WITH CONDITIONS
AS SPECIFIED IN THE LETTER OF APPROVAL
DATED JUN 28 2016 FILE # 15-0294
NO CHANGES ALLOWED WITHOUT PRIOR APPROVAL
APPROVED PLANS MUST BE AT CONSTRUCTION SITE

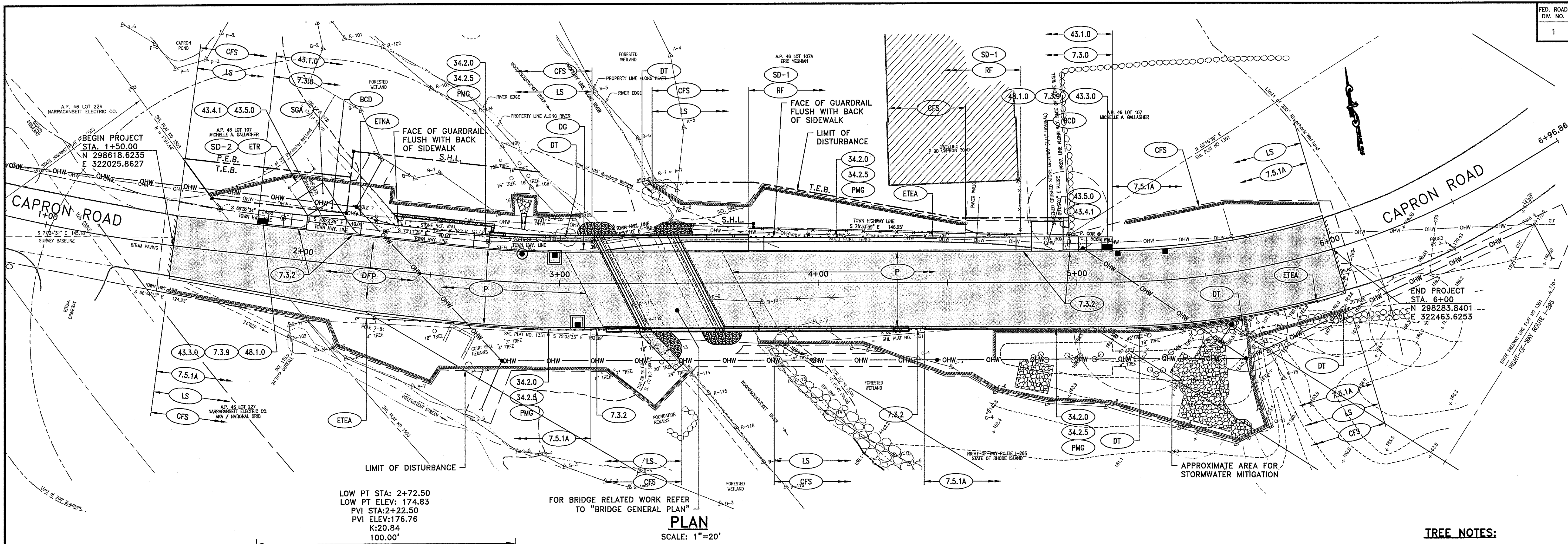
Charles A. Hester

(SIZE) LOCATION NUMBER
NUMBER
SIGN MOUNTING (R.I. STD. NO.)

TYPICAL SIGN DESIGNATION SYMBOL

REVISIONS			RHODE ISLAND DEPARTMENT OF TRANSPORTATION	
NO.	DATE	BY		
			REPLACEMENT OF	
			CAPRON BRIDGE No. 792	
			SMITHFIELD,	RHODE ISLAND
			JOB SPECIFIC	
			PLAN SYMBOLS, LEGEND & NOTES	
			CHECKED BY _____	DATE _____ SCALE NA



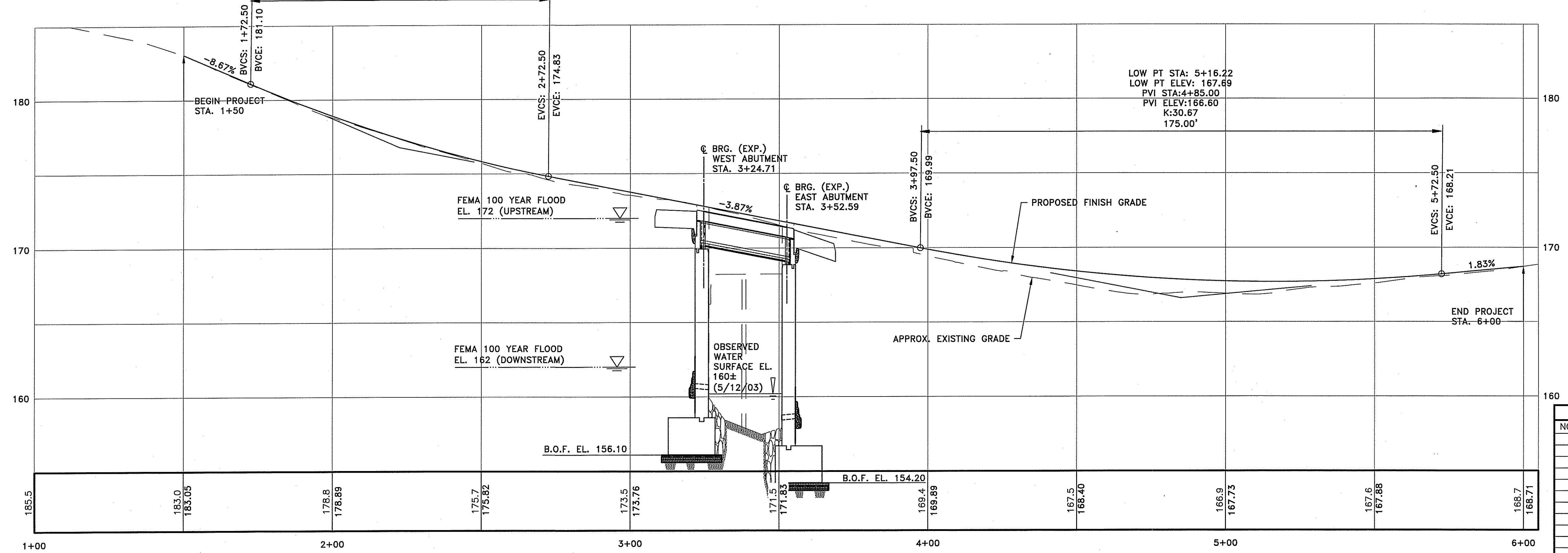
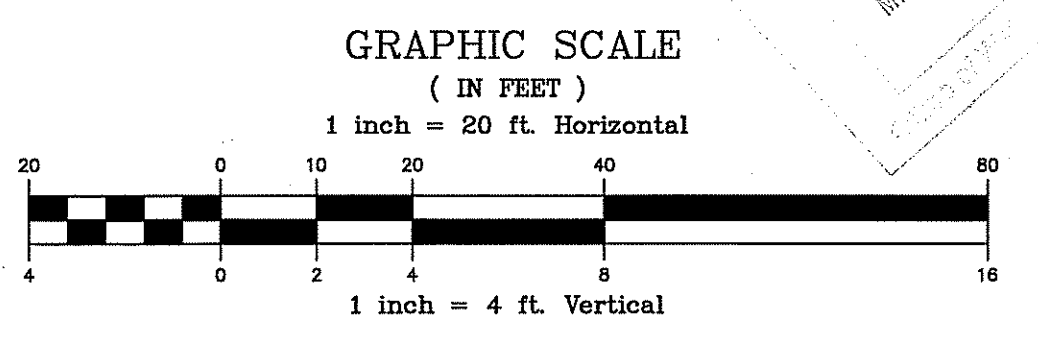


LOW PT STA: 2+72.50
 LOW PT ELEV: 174.83
 PVI STA: 2+22.50
 PVI ELEV: 176.76
 K: 20.84
 100.00'

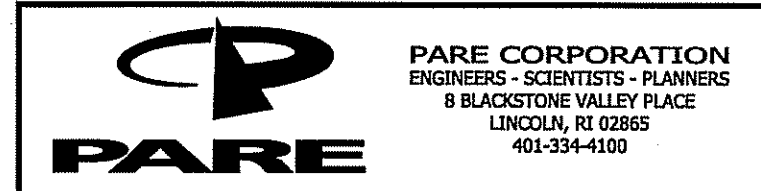
FOR BRIDGE RELATED WORK REFER TO "BRIDGE GENERAL PLAN"
PLAN
 SCALE: 1"=20'

- TREE NOTES:**
- ANY TREE CUTTING AND TRIMMING WORK SHALL BE PROVIDED THROUGH THE STATEWIDE TREE TRIMMING CONTRACT. THE CONTRACTOR SHALL COORDINATE THIS WORK WITH THE RESIDENT ENGINEER DURING CONSTRUCTION.
 - THERE SHALL BE NO PARKING OR STORING OF CONSTRUCTION EQUIPMENT UNDER THE DRIP LINE OF ANY TREES.

DEPARTMENT OF ENVIRONMENTAL MANAGEMENT
 OFFICE OF WATER RESOURCES
 FRESHWATER WETLANDS PROGRAM
 APPROVED WITH CONDITIONS
 AS SPECIFIED IN THE LETTER OF APPROVAL
 DATED JUN 28 2016 FILE # 15-039
 NO CHANGES ALLOWED WITHOUT PRIOR APPROVAL
 APPROVED PLANS MUST BE AT CONSTRUCTION SITE

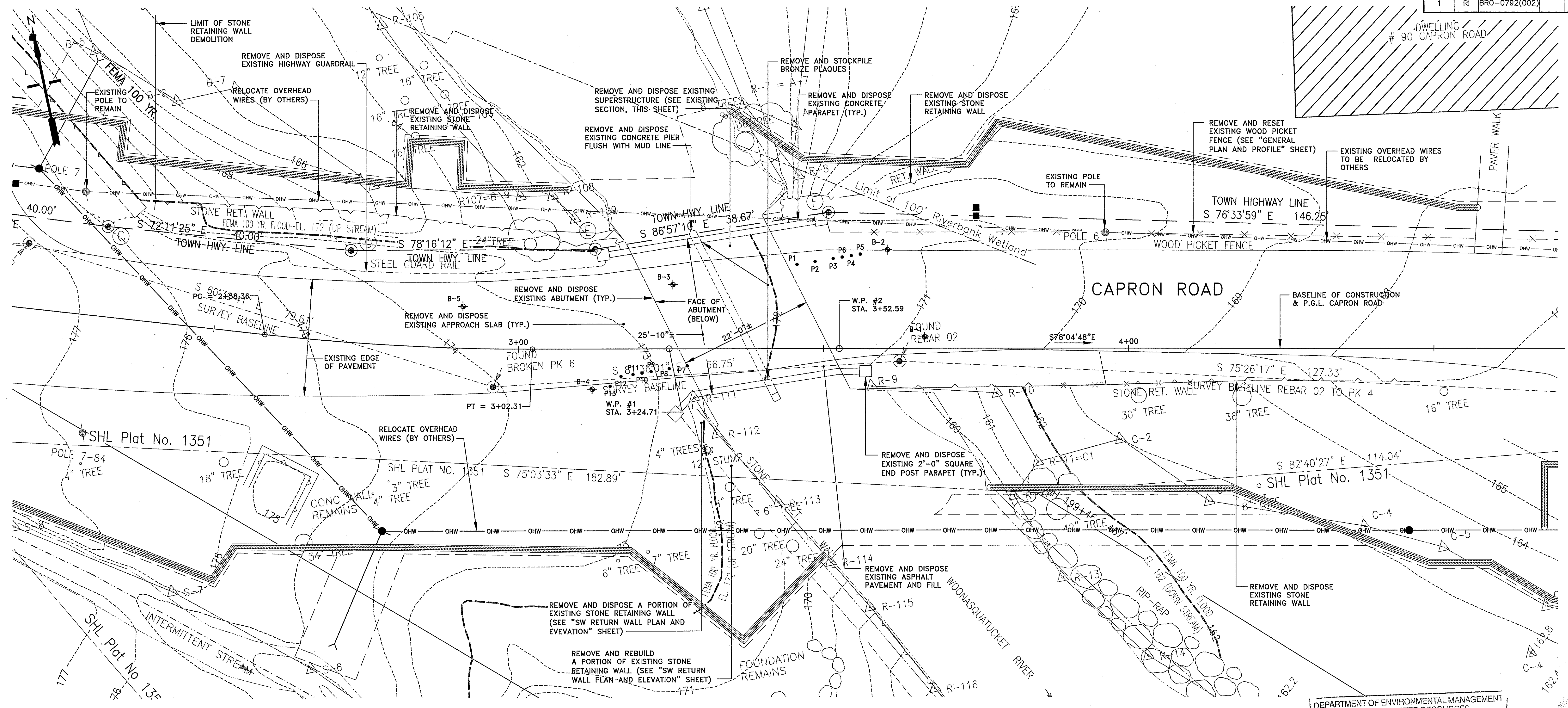


PROFILE
 SCALE: HORIZ. 1"=20'
 VERT. 1"=4'



REVISIONS		
NO.	DATE	BY

RHODE ISLAND
 DEPARTMENT OF TRANSPORTATION
 REPLACEMENT OF
CAPRON BRIDGE No. 792
 SMITHFIELD, RHODE ISLAND
GENERAL PLAN AND PROFILE
 CHECKED BY _____ DATE _____ SCALE AS NOTED



DEMOLITION PLAN
SCALE: 1/8"=1'-0"

DEMOLITION NOTES:

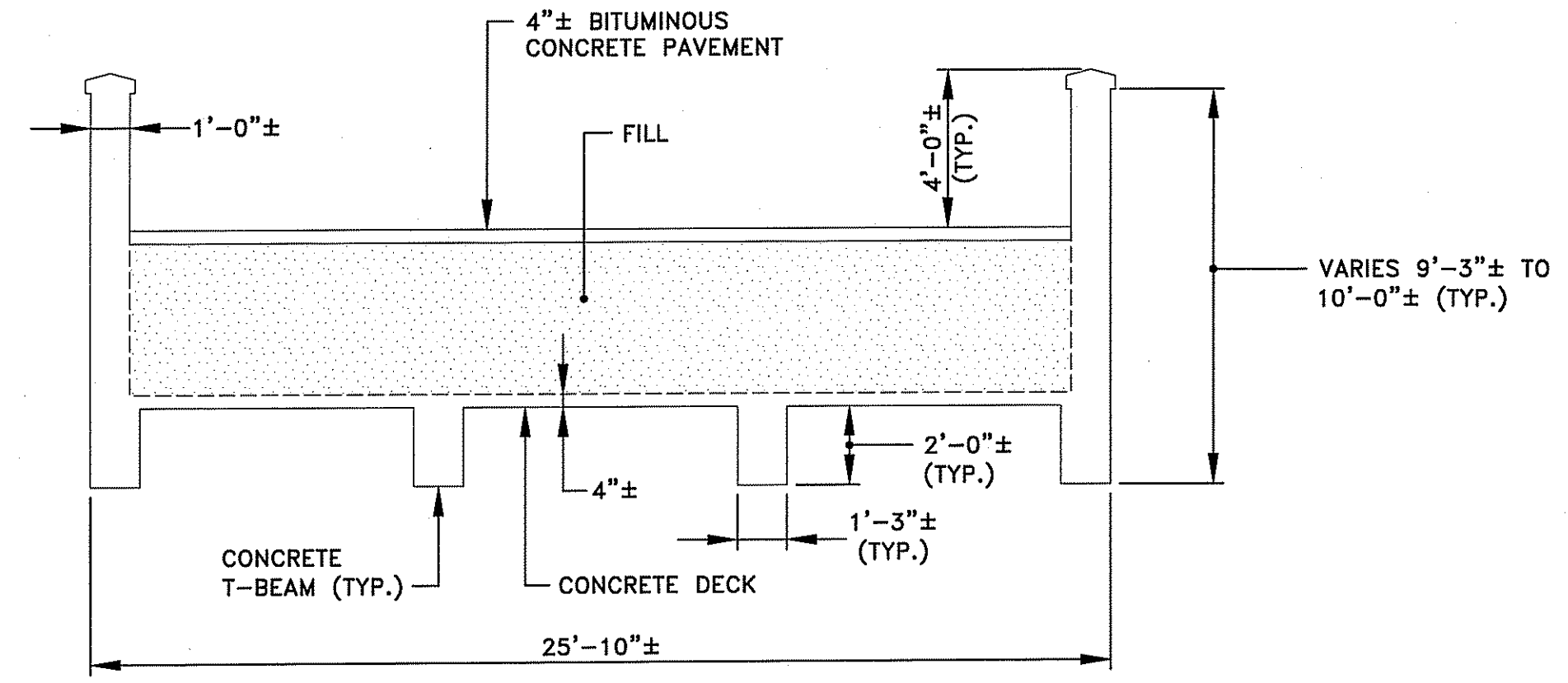
- NO PLANS FOR THE EXISTING BRIDGE ARE AVAILABLE. INFORMATION SHOWN ON THE DEMOLITION PLANS IS APPROXIMATE AND SHALL BE FIELD VERIFIED BY THE CONTRACTOR.
- BRIDGE DEMOLITION WILL BE PAID FOR UNDER THE FOLLOWING ITEMS:
 - * 803.0000 "REMOVE AND DISPOSE BRIDGES" - ALL REINFORCED CONCRETE SUPERSTRUCTURE AND SUBSTRUCTURE COMPONENTS, ALONG WITH THE FILL ON THE SUPERSTRUCTURE.
 - * 201.0424 "REMOVE AND DISPOSE RETAINING WALL" - ALL STONE WALLS CALLED OUT TO BE REMOVED. THIS INCLUDES REMOVAL OF STONE FROM THE SOUTHWEST WALL THAT WILL BE PARTIALLY REBUILT.
- THE CONTRACTOR MAY ELECT TO SALVAGE AND REUSE PORTIONS OF THE EXISTING STONE WALLS FOR REUSE IN CONSTRUCTING AND RECONSTRUCTING THE STONE WALLS AS SHOWN ON THE PLANS, PROVIDED THE EXISTING STONES TO BE REUSED CAN BE SHOWN BY THE CONTRACTOR TO MEET THE REQUIREMENTS OF THE STANDARD SPECIFICATIONS. ALL STONES SELECTED FOR REUSE SHALL BE CLEANED TO MEET THE REQUIREMENTS FOR MORTAR ADHESION AND APPEARANCE IN STANDARD SPECIFICATIONS SECTION M.14.01 "STONE FOR MASONRY." THE ABILITY TO REUSE THE STONES IS NOT GUARANTEED.
- IT SHALL BE THE CONTRACTOR'S RESPONSIBILITY TO ENSURE THAT NO DEBRIS FALLS INTO THE WATERWAY DURING WORK ON THE BRIDGE. THE USE OF SUSPENDED NETS OR TARPS TO CATCH FALLING DEBRIS SHALL BE EMPLOYED. ANY MATERIAL WHICH DOES FALL INTO THE WATERWAY SHALL BE REMOVED IMMEDIATELY TO THE SATISFACTION OF THE ENGINEER.
- DEBRIS IN THE RIVER TRAPPED AGAINST AND BELOW THE EXISTING BRIDGE SHALL BE REMOVED AND DISPOSED. PAYMENT SHALL BE CONSIDERED INCIDENTAL TO ITEM CODE 803.0300. THE CONTRACTOR SHALL BE AWARE THAT THE AMOUNT OF TRAPPED DEBRIS HAS BEEN OBSERVED TO BE VARIABLE THROUGHOUT ANY YEAR.
- SHOULD THE CONTRACTOR ELECT TO REMOVE THE PIER BELOW THE MUD LINE, THE PIER SHALL BE ISOLATED BY SAND BAG DYKES THROUGHOUT THE REMOVAL PROCESS UNTIL THE AREA IS RESTORED. NO ADDITIONAL PAYMENT WILL BE MADE FOR WORK ASSOCIATED WITH REMOVING THE PIER BELOW THE MUD LINE.

ESTIMATED DEMOLITION QUANTITIES:

THE FOLLOWING ESTIMATED QUANTITIES WERE PREPARED USING THE BEST AVAILABLE INFORMATION AND ARE NOT GUARANTEED. PLANS OF THE EXISTING BRIDGE ARE NOT AVAILABLE. THE CONTRACTOR SHALL BE RESPONSIBLE FOR PERFORMING ANY NECESSARY FIELD SURVEYS AND MEASUREMENTS TO DETERMINE THE QUANTITIES OF MATERIALS TO BE REMOVED.

REINFORCED CONCRETE:	
SUPERSTRUCTURE	42 CY
PIER	20 CY
ABUTMENTS	180 CY
APPROACH SLABS	32 CY
ASPHALT WEARING SURFACE ON SUPERSTRUCTURE	64 SY
FILL ON SUPERSTRUCTURE	85 CY

DEPARTMENT OF ENVIRONMENTAL MANAGEMENT
OFFICE OF WATER RESOURCES
FRESHWATER WETLANDS PROGRAM
APPROVED WITH CONDITIONS
AS SPECIFIED IN THE LETTER OF APPROVAL
DATED JUN 28 2016 FILE # 15-0134
NO CHANGES ALLOWED WITHOUT PRIOR APPROVAL
APPROVED PLANS MUST BE AT CONSTRUCTION SITE
Charles A. Hackett

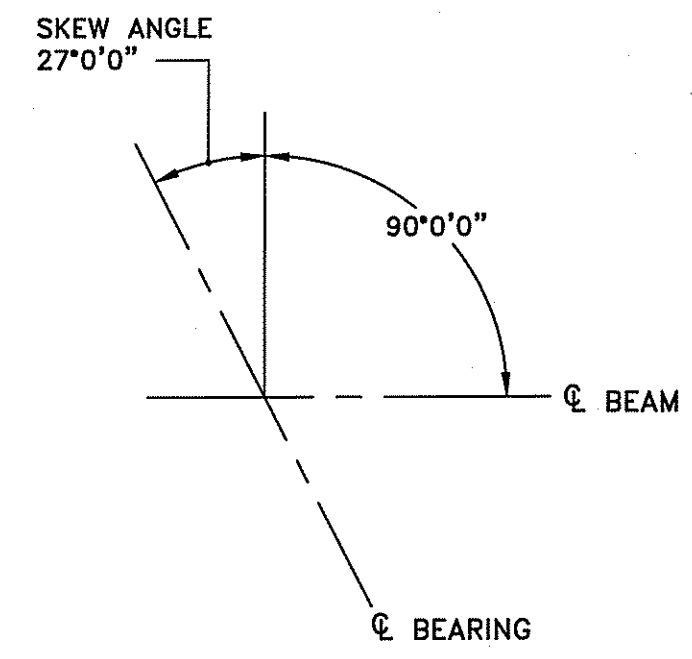
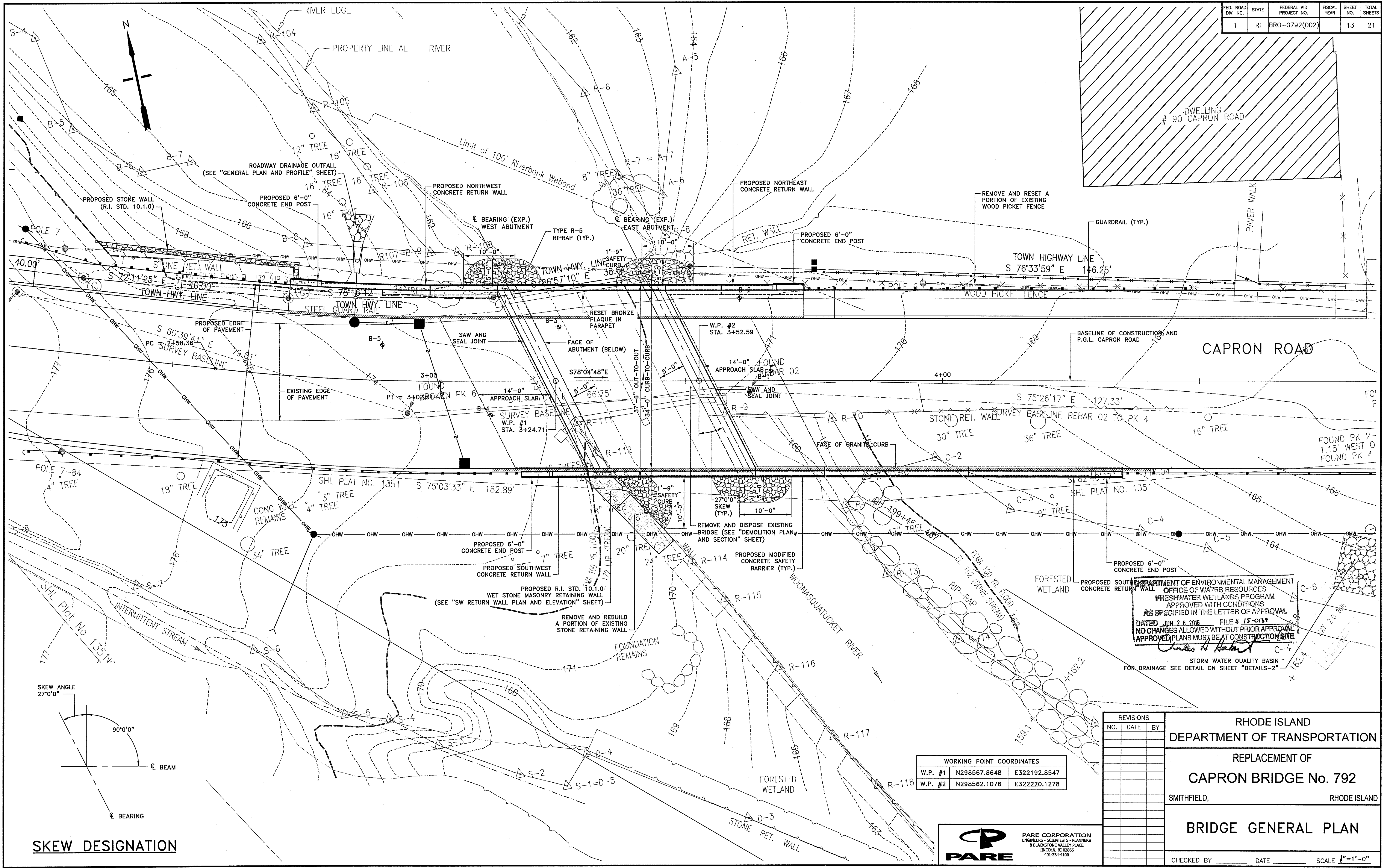


EXISTING SUPERSTRUCTURE SECTION
SCALE: 1/4"=1'-0"

REVISIONS			RHODE ISLAND DEPARTMENT OF TRANSPORTATION
NO.	DATE	BY	
			REPLACEMENT OF CAPRON BRIDGE No. 792 SMITHFIELD, RHODE ISLAND
			DEMOLITION PLAN AND SECTION
			CHECKED BY _____ DATE _____ SCALE AS NOTED



FED. ROAD DIV. NO.	STATE	FEDERAL AID PROJECT NO.	FISCAL YEAR	SHEET NO.	TOTAL SHEETS
1	RI	BRO-0792(002)		13	21



WORKING POINT COORDINATES			
W.P. #1	N298567.8648	E322192.8547	
W.P. #2	N298562.1076	E322220.1278	

DEPARTMENT OF ENVIRONMENTAL MANAGEMENT
 OFFICE OF WATER RESOURCES
 FRESHWATER WETLANDS PROGRAM
 APPROVED WITH CONDITIONS
 AS SPECIFIED IN THE LETTER OF APPROVAL
 DATED JUN 28 2016 FILE # 15-039
 NO CHANGES ALLOWED WITHOUT PRIOR APPROVAL
 APPROVED PLANS MUST BE AT CONSTRUCTION SITE

James H. Hester

REVISIONS		
NO.	DATE	BY

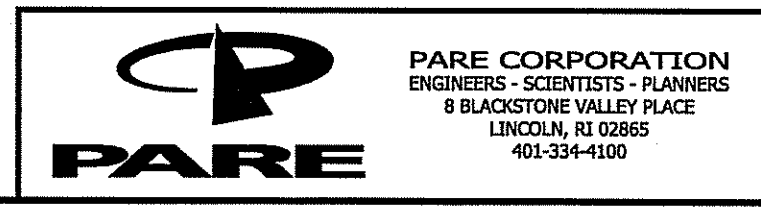
RHODE ISLAND
 DEPARTMENT OF TRANSPORTATION

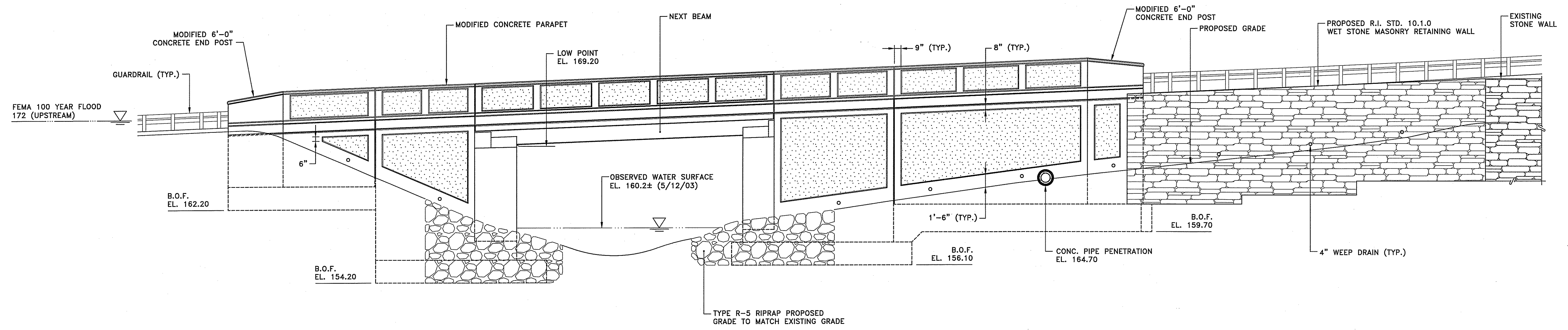
REPLACEMENT OF
CAPRON BRIDGE No. 792

SMITHFIELD, RHODE ISLAND

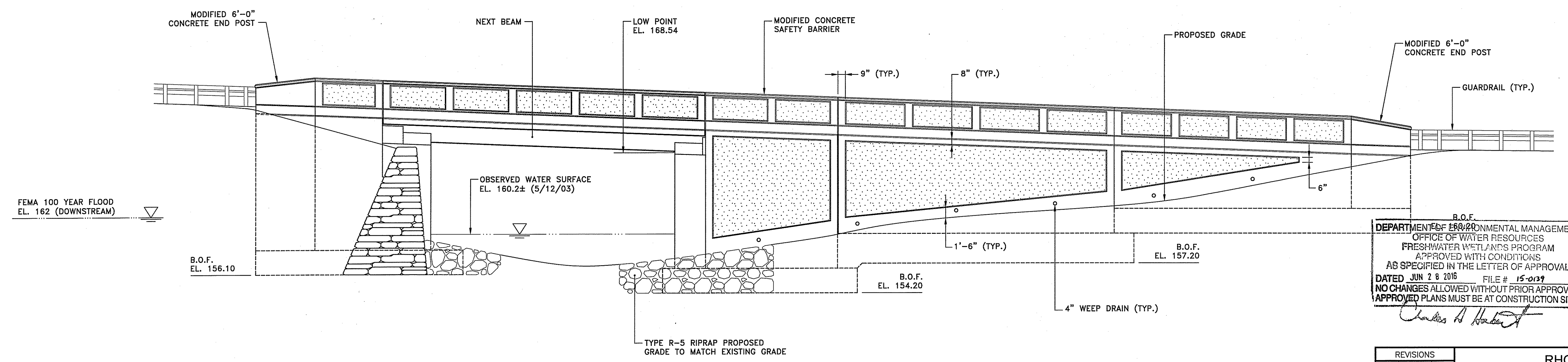
BRIDGE GENERAL PLAN

CHECKED BY _____ DATE _____ SCALE 1"=1'-0"





NORTH ELEVATION



SOUTH ELEVATION

DEPARTMENT OF ENVIRONMENTAL MANAGEMENT
 OFFICE OF WATER RESOURCES
 FRESHWATER WETLANDS PROGRAM
 APPROVED WITH CONDITIONS
 AS SPECIFIED IN THE LETTER OF APPROVAL
 DATED JUN 28 2016 FILE # 15-0139
 NO CHANGES ALLOWED WITHOUT PRIOR APPROVAL
 APPROVED PLANS MUST BE AT CONSTRUCTION SITE

Charles A. Hordick

MAY 20 2016

REVISIONS		
NO.	DATE	BY

RHODE ISLAND
 DEPARTMENT OF TRANSPORTATION

REPLACEMENT OF
CAPRON BRIDGE No. 792

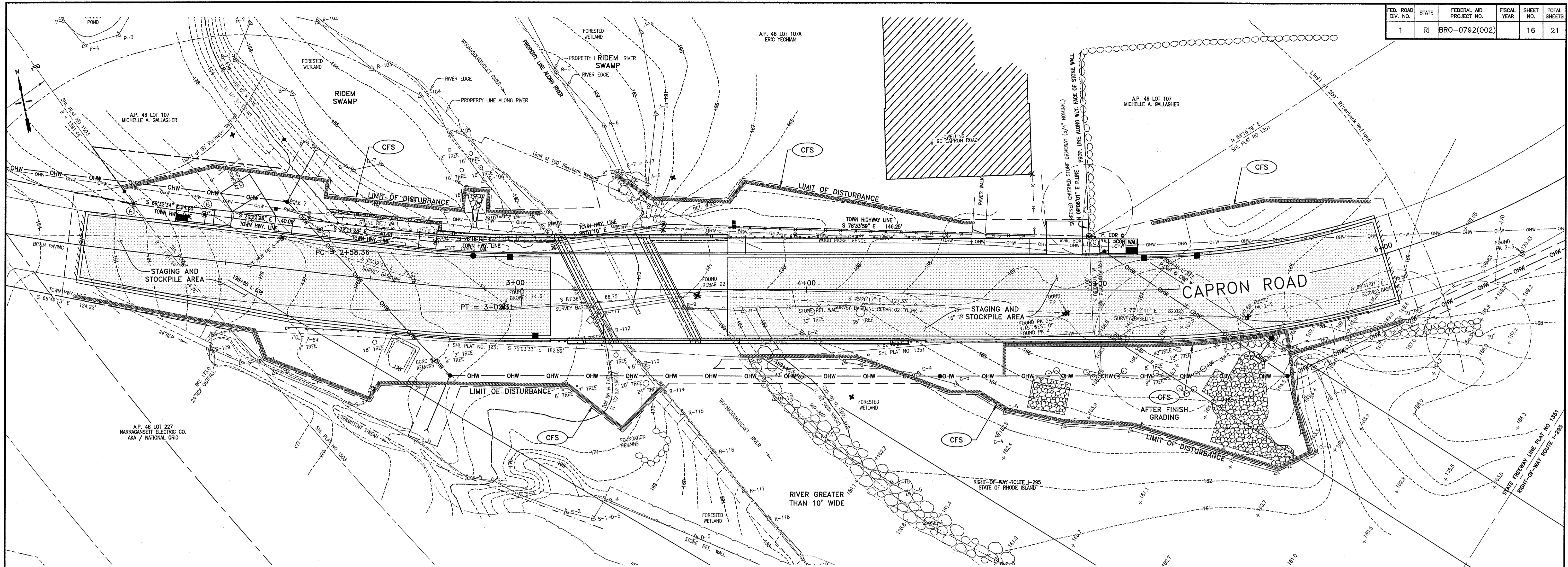
SMITHFIELD, RHODE ISLAND

BRIDGE ELEVATIONS

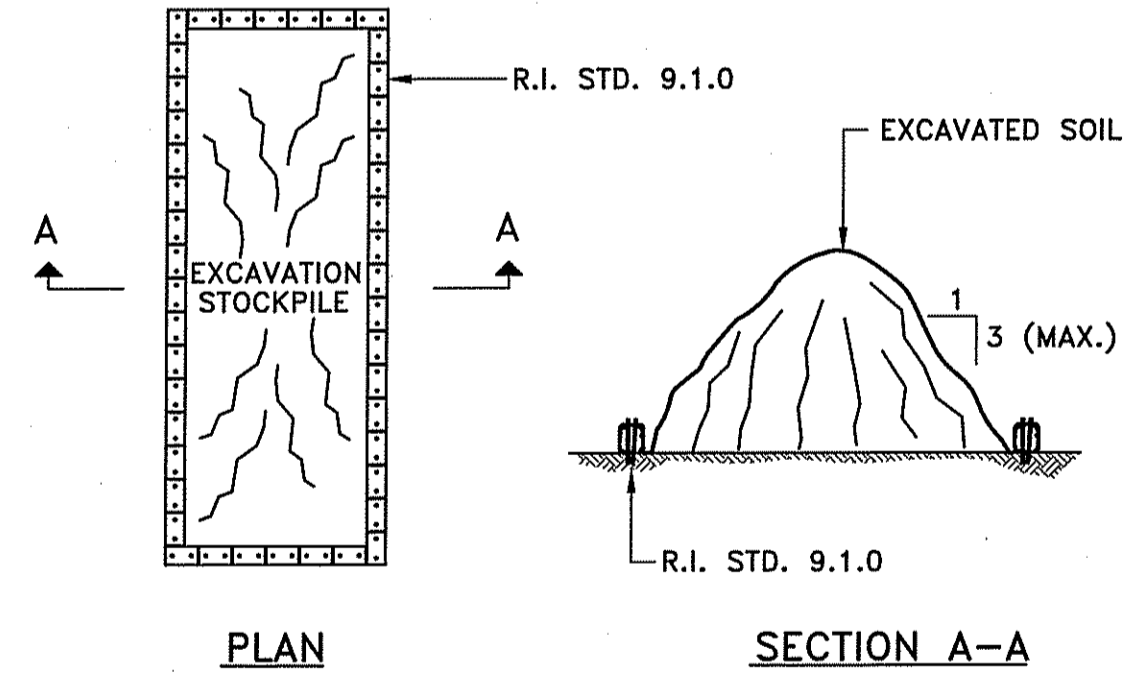
CHECKED BY _____ DATE _____ SCALE 1/8"=1'-0"



FED. ROAD DIV. NO.	STATE	FEDERAL AID PROJECT NO.	FISCAL YEAR	SHEET NO.	TOTAL SHEETS
1	RI	BRO-0792(002)		16	21



PLAN
SCALE: 1/16"=1'-0"



- NOTES:**
- REQUIRED SIZE TO BE DETERMINED BY THE CONTRACTOR.
 - DEWATERING STOCKPILE BASINS SHALL BE PLACED WITHIN THE STAGING AND STOCKPILE AREA SHOWN ON THIS PLAN. BASED ON ACTUAL CONSTRUCTION OPERATIONS, THE CONTRACTOR MAY CHOOSE ALTERNATE LOCATIONS FOR THE DEWATERING STOCKPILE BASINS WITH THE APPROVAL OF THE ENGINEER. ANY SUCH ALTERNATE LOCATION SHALL BE WITHIN THE LIMITS OF DISTURBANCE.
 - DEWATERED SOIL; IF NOT REMOVED IMMEDIATELY, SHALL BE COVERED WHEN SOIL IS DETERMINED TO BE DRY BY THE RESIDENT ENGINEER. THE COVERING SHALL BE A SUITABLE TARPULIN OR SIMILAR FLEXIBLE WATERPROOF COVER.
 - PAYMENT FOR R.I. STD. 9.1.0, HAY BALED EROSION CHECK, REQUIRED FOR DEWATERING STOCKPILE BASIN WILL NOT BE MEASURED FOR PAYMENT SEPARATELY AND SHALL BE INCLUDED FOR PAYMENT WITHIN THE CONTRACT UNIT BID PRICE FOR "CONSTRUCT AND REMOVE STOCKPILE BASIN AND RESTORE BASIN AREA", UNDER ITEM CODE 208.9902.

DEWATERING STOCKPILE BASIN
NOT TO SCALE

WATER DIVERSION AND ADDITIONAL EROSION CONTROL NOTES:

- THE TYPES AND LOCATIONS OF THE EROSION CONTROL BARRIERS AND WATER DIVERSION SYSTEMS MAY BE ADJUSTED SLIGHTLY TO ACCOMMODATE FIELD CONDITIONS. THE CONTRACTOR SHALL NOT WORK OUTSIDE OF THE LIMIT OF DISTURBANCE SHOWN ON THESE PLANS. WATER CONTROL SHALL NOT TAKE PLACE OUTSIDE THE LIMITS SHOWN ON THE "CONCEPTUAL TEMPORARY EARTH SUPPORT AND WATER DIVERSION PLAN" SHEET. SIGNIFICANT CHANGES MAY REQUIRE THAT PROJECT PERMITS BE MODIFIED. SUCH PERMIT MODIFICATIONS OR REPERMITTING SHALL BE THE RESPONSIBILITY OF THE CONTRACTOR.
- WATER CONTROL FOR INSTALLATION OF BEDDING AND RIPRAP, PIER REMOVAL, AND ALL OTHER WORK AS NECESSARY TO COMPLETE THE BRIDGE STRUCTURE WILL BE PAID FOR UNDER ITEM 208.9902 "CONTROL OF WATER," EXCEPT FOR WATER CONTROL ASSOCIATED WITH THE TEMPORARY EARTH SUPPORT SYSTEM FOR ABUTMENT AND WALL DEMOLITION AND CONSTRUCTION, WHICH WILL BE PAID FOR UNDER ITEM 805.9901 "TEMPORARY EARTH SUPPORT."
- TREES IN CLOSE PROXIMITY TO THE WORK THAT ARE TO REMAIN SHALL BE FLAGGED AND PROTECTED FROM DAMAGE.
- IT SHALL BE THE CONTRACTOR'S RESPONSIBILITY TO ENSURE THAT NO DEBRIS FALLS INTO THE WATERWAY DURING WORK ON THE BRIDGE. THE USE OF SUSPENDED NETS OR TARPS TO CATCH FALLING DEBRIS SHALL BE EMPLOYED. ANY MATERIAL WHICH DOES FALL INTO THE WATERWAY SHALL BE REMOVED IMMEDIATELY TO THE SATISFACTION OF THE ENGINEER. PREVENTING DEBRIS FROM FALLING INTO THE WATERWAY AND REMOVING FALLEN DEBRIS FROM THE WATERWAY SHALL BE CONSIDERED INCIDENTAL TO THE WORK BEING PERFORMED.
- UPON COMPLETION OF THE PROJECT AND PERMANENT GROUND SURFACE STABILIZATION THE EROSION CONTROL BARRIERS SHALL BE REMOVED FROM THE SITE.
- UPON COMPLETION OF WORK, THE CONTRACTOR SHALL RESTORE ALL DISTURBED AREAS TO PRE-CONSTRUCTION ELEVATIONS AND SEED WITH A SUITABLE SEED MIX.
- THE CONTRACTOR MUST RESTORE GRADE TO PRE-CONSTRUCTION ELEVATIONS PRIOR TO THE REMOVAL OF THE WATER DIVERSION SYSTEM.
- FOR ADDITIONAL DRAINAGE AND EROSION CONTROL NOTES REFER TO "STANDARD NOTES - 1" AND "JOB SPECIFIC PLAN SYMBOLS, LEGEND, & NOTES" SHEETS.

DEWATERING BASIN NOTES:

- SEE R.I. STD. 9.7.0 FOR DEWATERING BASIN DETAILS. OTHER METHODS FOR REMOVING SEDIMENT FROM DEWATERING WASTEWATER (E.G. FILTER BLADDERS) MAY BE ALLOWED WITH THE APPROVAL OF THE RESIDENT ENGINEER.
- DEWATERING STOCKPILE BASIN AND DEWATERING BASINS SHALL BE PLACED WITHIN THE STAGING AND STOCKPILE AREA SHOWN ON THIS PLAN. BASED ON ACTUAL CONSTRUCTION OPERATIONS, THE CONTRACTOR MAY CHOOSE ALTERNATE LOCATIONS FOR THE DEWATERING BASINS WITH THE APPROVAL OF THE ENGINEER. ANY SUCH ALTERNATE LOCATION SHALL BE WITHIN THE LIMITS OF DISTURBANCE.

DEPARTMENT OF ENVIRONMENTAL MANAGEMENT
OFFICE OF WATER RESOURCES
FRESHWATER WETLANDS PROGRAM
APPROVED WITH CONDITIONS
AS SPECIFIED IN THE LETTER OF APPROVAL
DATED JUN 28 2016 FILE # 15-0131
NO CHANGES ALLOWED WITHOUT PRIOR APPROVAL
APPROVED PLANS MUST BE AT CONSTRUCTION SITE

Charles A. Herbert

MAY 20 2016

REVISIONS		
NO.	DATE	BY

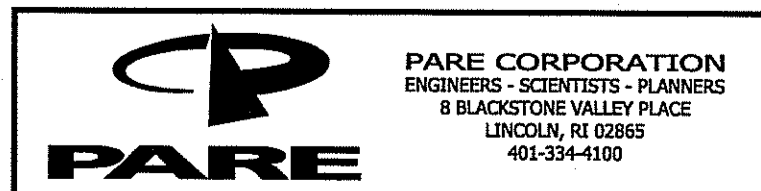
RHODE ISLAND
DEPARTMENT OF TRANSPORTATION

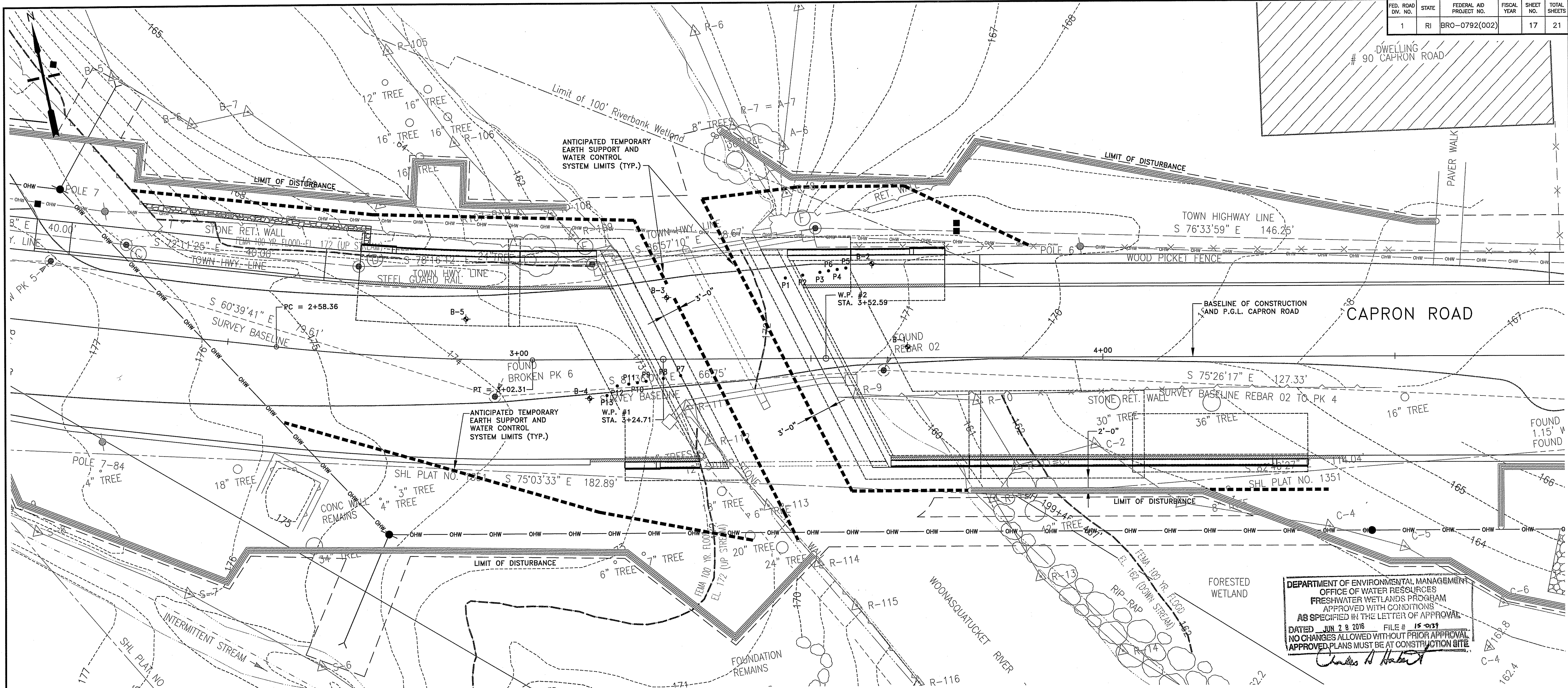
REPLACEMENT OF
CAPRON BRIDGE No. 792

SMITHFIELD, RHODE ISLAND

BRIDGE EROSION CONTROL PLAN

CHECKED BY _____ DATE _____ SCALE AS NOTED





DEPARTMENT OF ENVIRONMENTAL MANAGEMENT
 OFFICE OF WATER RESOURCES
 FRESHWATER WETLANDS PROGRAM
 APPROVED WITH CONDITIONS
 AS SPECIFIED IN THE LETTER OF APPROVAL
 DATED JUN 28 2016 FILE # 15-037
 NO CHANGES ALLOWED WITHOUT PRIOR APPROVAL
 APPROVED PLANS MUST BE AT CONSTRUCTION SITE

Charles A. Hackett

SHORING NOTES:

- THE LIMITS OF THE TEMPORARY EARTH SUPPORT AND WATER CONTROL SYSTEM SHOWN ARE CONCEPTUAL ONLY. THE CONTRACTOR SHALL BE RESPONSIBLE FOR LAYING OUT, DESIGNING, FURNISHING, ERECTING, MAINTAINING, AND REMOVING THE TEMPORARY EARTH SUPPORT SYSTEM IN ACCORDANCE WITH SPECIAL PROVISION 805.9901 "TEMPORARY EARTH SUPPORT."
- IT IS ANTICIPATED THAT THE CONTRACTOR'S TEMPORARY EARTH SUPPORT SYSTEM WILL CONSIST OF SOLDIER PILES AND LAGGING SEALED TO LIMIT WATER INTRUSION INTO THE EXCAVATION.
- THE DESIGN SHALL ACCOMMODATE, AT A MINIMUM, THE 10-YEAR STORM ELEVATION OF 164.66 AND VOLUME OF 910 CFS. THIS ELEVATION IS BASED ON THE EXISTING BRIDGE OPENING. THE DESIGN SHALL CONSIDER THE EFFECT OF AN OPENING MODIFIED BY THE INSTALLATION OF THE TEMPORARY EARTH SUPPORT SYSTEM.
- THE CONTRACTOR MAY ELECT TO USE MUD MATS AT THE BOTTOM OF THE EXCAVATION AS PART OF THE EARTH SUPPORT SYSTEM AND/OR DEWATERING SYSTEM. THE MUD MATS MAY BE USED IN LIEU OF OR IN CONJUNCTION WITH CRUSHED STONE AS THE BASE FOR CASTING THE FOOTINGS. NO ADDITIONAL PAYMENT WILL BE MADE FOR THE ADDITIONAL EXCAVATION, MUD MAT CONCRETE, OR OTHER INCIDENTALS ASSOCIATED WITH THIS OPTION. DESIGN OF THE MUD MATS SHALL BE INCLUDED WITH THE TEMPORARY EARTH SUPPORT SYSTEM AND/OR DEWATERING SYSTEM SUBMITTALS AS APPROPRIATE.

- EXISTING UTILITIES ARE SHOWN IN APPROXIMATE LOCATIONS. PRIOR TO INSTALLING THE TEMPORARY EARTH SUPPORT SYSTEM, THE CONTRACTOR SHALL FIELD VERIFY THE EXACT LOCATION OF ALL EXISTING UTILITIES.
- THE CONTRACTOR SHALL BE AWARE OF THE PRESENCE OF OVERHEAD UTILITIES AND SHALL PLAN CONSTRUCTION ACTIVITIES AND EQUIPMENT ACCORDINGLY.
- DEWATERING AND RIVERFLOW CONTROL:
 - THE CONTRACTOR SHALL DESIGN THE MEANS AND METHODS FOR DEWATERING AND RIVERFLOW CONTROL AND SUBMIT TO THE ENGINEER FOR APPROVAL PRIOR TO INSTALLATION.
 - ALL DEWATERING AND RIVERFLOW CONTROL ASSOCIATED WITH THE TEMPORARY EARTH SUPPORT SYSTEM SHALL BE CONSIDERED INCIDENTAL TO ITEM 805.9901.
- THE CONTRACTOR SHALL BE RESPONSIBLE FOR THE PROTECTION OF ALL UTILITIES AND STRUCTURES IN THE AREA. ANY DAMAGE TO UTILITIES OR STRUCTURES BY THE CONTRACTOR'S OPERATION SHALL BE REPAIRED IMMEDIATELY AND TO THE SATISFACTION OF THE ENGINEER AND STATE. PROTECTION AND REPAIRS SHALL BE PERFORMED BY THE CONTRACTOR AT NO ADDITIONAL COST TO THE STATE NOR THE ENGINEER. REFER TO "GENERAL PLAN" AND "DRAINAGE AND UTILITY PLAN" FOR LOCATIONS OF EXISTING AND PROPOSED UTILITIES.

- WELDING SHALL BE IN ACCORDANCE WITH THE LATEST STRUCTURAL WELDING CODE ANSI/AASHTO/AWS D1.5 (INCLUDING ALL INTERIMS TO DATE) AND APPLICABLE SUPPLEMENTAL AWS PUBLICATIONS.
- WELDING RODS: E-70 SERIES.
- ALL WELDERS SHALL HOLD VALID CERTIFICATES AND HAVE CURRENT EXPERIENCE IN THE TYPE OF WELD SPECIFIED IN ACCORDANCE WITH THE REQUIREMENTS OF THE CURRENT AWS D1.5 BRIDGE WELDING CODE. CERTIFICATES SHALL BE THOSE ISSUED BY AN ACCEPTED TESTING AGENCY.
- DEWATERING LIMITS:
 - GRANULAR SOIL SUBGRADE:
GROUND WATER SHALL BE LOWERED AT LEAST 2'-0" BELOW THE DESIGNED BOTTOM OF SOIL EXCAVATIONS. REFER TO BORING LOGS FOR GROUND WATER INFORMATION.
 - BEDROCK SUBGRADE:
GROUND WATER SHALL BE LOWERED AT LEAST TO THE BOTTOM OF ROCK EXCAVATION BY PUMPING ONLY THE INSIDE OF THE SHORING SYSTEM PRIOR TO PLACEMENT OF BEDDING. REFER TO BORING LOGS FOR GROUND WATER INFORMATION.

- ALL TEMPORARY EARTH SUPPORT SYSTEM COMPONENTS SHALL BE CUT OFF 2'-0" BELOW GRADE AT THE COMPLETION OF THE WORK EXCEPT FOR ANY TEMPORARY TIMBER LAGGING (IF USED), WHICH SHALL BE REMOVED IN ITS ENTIRETY. CUTOFF NEED NOT BE BELOW THE TOP OF BEDROCK. NO COMPONENTS SOCKETED INTO BEDROCK SHALL BE EXTRACTED.
- THE TEMPORARY EARTH SUPPORT SYSTEM DESIGNER SHALL ASSUME THAT THE BOTTOM OF EXCAVATION MAY BE LOWERED BY 2'-0" BELOW THE PROPOSED EXCAVATION DEPTHS INDICATED ON THE PLANS DUE TO POTENTIAL OVER EXCAVATION OR REMOVAL OF UNSUITABLE MATERIALS.
- EQUIPMENT SURCHARGE:
THE TEMPORARY EARTH SUPPORT SYSTEM SHALL BE DESIGNED TO SUPPORT ALL EQUIPMENT OR MATERIAL SURCHARGE LOADINGS POSITIONED BEHIND THE SYSTEMS.

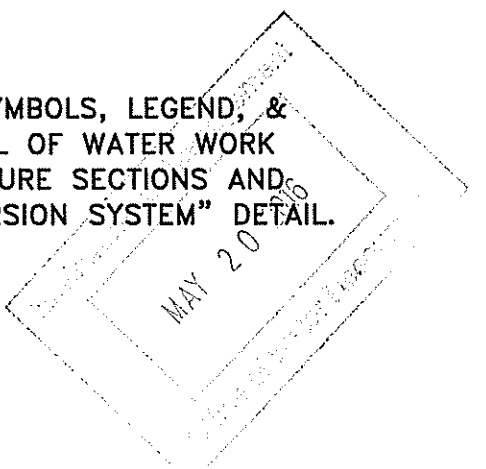
SHOULD THE LIMITS OF THE CONTRACTOR'S TEMPORARY EARTH SUPPORT AND WATER CONTROL SYSTEM EXCEED THE CONCEPTUAL LIMITS SHOWN ON THE PLANS, THE CONTRACTOR'S PROPOSED TEMPORARY EARTH SUPPORT SYSTEM WILL REQUIRE THAT RIDEM SUBMIT THE PROPOSED CHANGES TO RIDEM FOR REVIEW AND WRITTEN APPROVAL PRIOR TO ACCEPTANCE OF THE CONTRACTOR'S PROPOSED SYSTEM. SHOULD THE CONTRACTOR ELECT TO PURSUE SUCH A SYSTEM, IT WILL BE AT THE SOLE EXPENSE OF THE CONTRACTOR, AND THE CONTRACTOR ACKNOWLEDGES THAT REVIEW BY RIDEM IS NOT SUBJECT TO THE CONTRACT SPECIFIED TIME FRAMES FOR SHOP DRAWING REVIEW.

LEGEND:

- B-x GEOTECHNICAL BORINGS COMPLETED BY GUILD DRILLING BETWEEN MARCH 13 AND MARCH 19, 2003. BORINGS WERE OBSERVED BY PARE ENGINEERING.
- Px SOLID AUGER PROBES COMPLETED BY GUILD DRILLING BETWEEN MARCH 14 AND MARCH 18, 2003. PROBES WERE OBSERVED BY PARE ENGINEERING.

NOTE:

SEE "JOB SPECIFIC PLAN SYMBOLS, LEGEND, & NOTES" SHEET FOR CONTROL OF WATER WORK SEQUENCE AND "SUBSTRUCTURE SECTIONS AND DETAILS" FOR "WATER DIVERSION SYSTEM" DETAIL.



REVISIONS		
NO.	DATE	BY

RHODE ISLAND
 DEPARTMENT OF TRANSPORTATION

REPLACEMENT OF
CAPRON BRIDGE No. 792

SMITHFIELD, RHODE ISLAND

**CONCEPTUAL TEMPORARY
 EARTH SUPPORT AND
 WATER DIVERSION PLAN**

CHECKED BY _____ DATE _____ SCALE 1"=1'-0"



