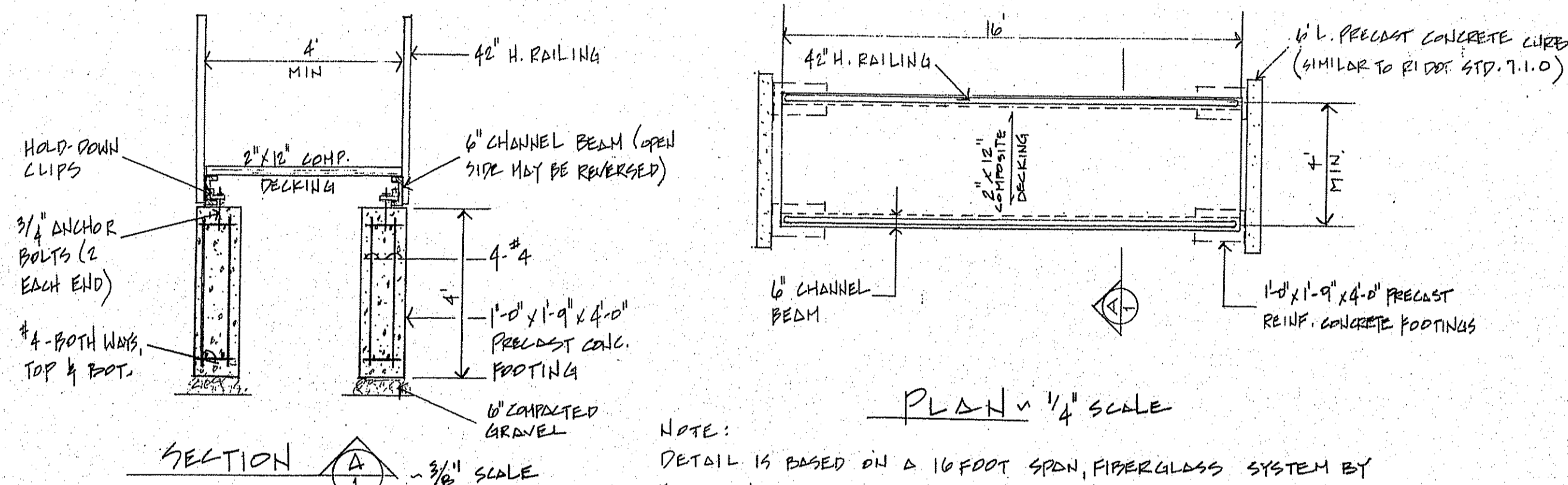
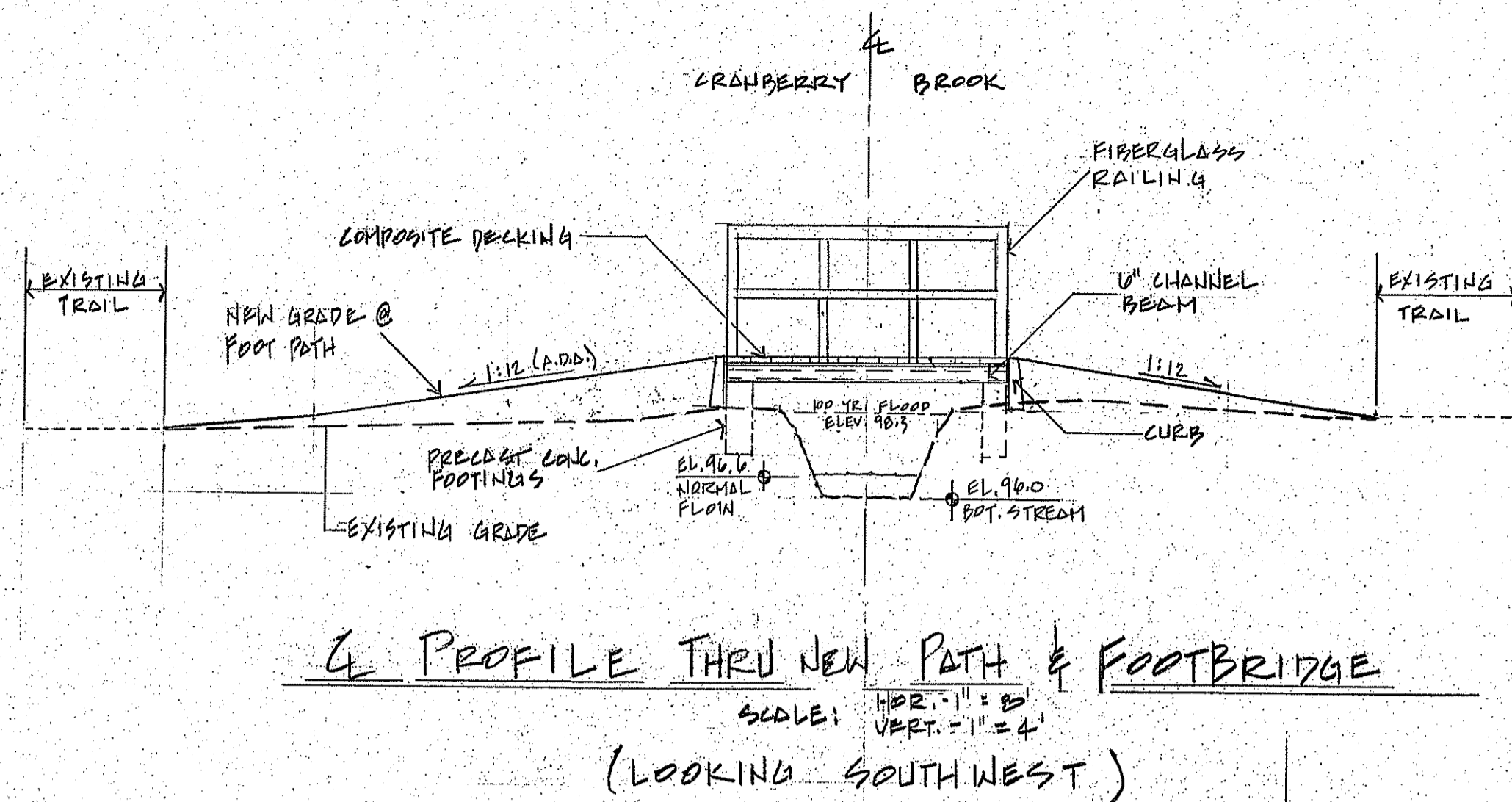


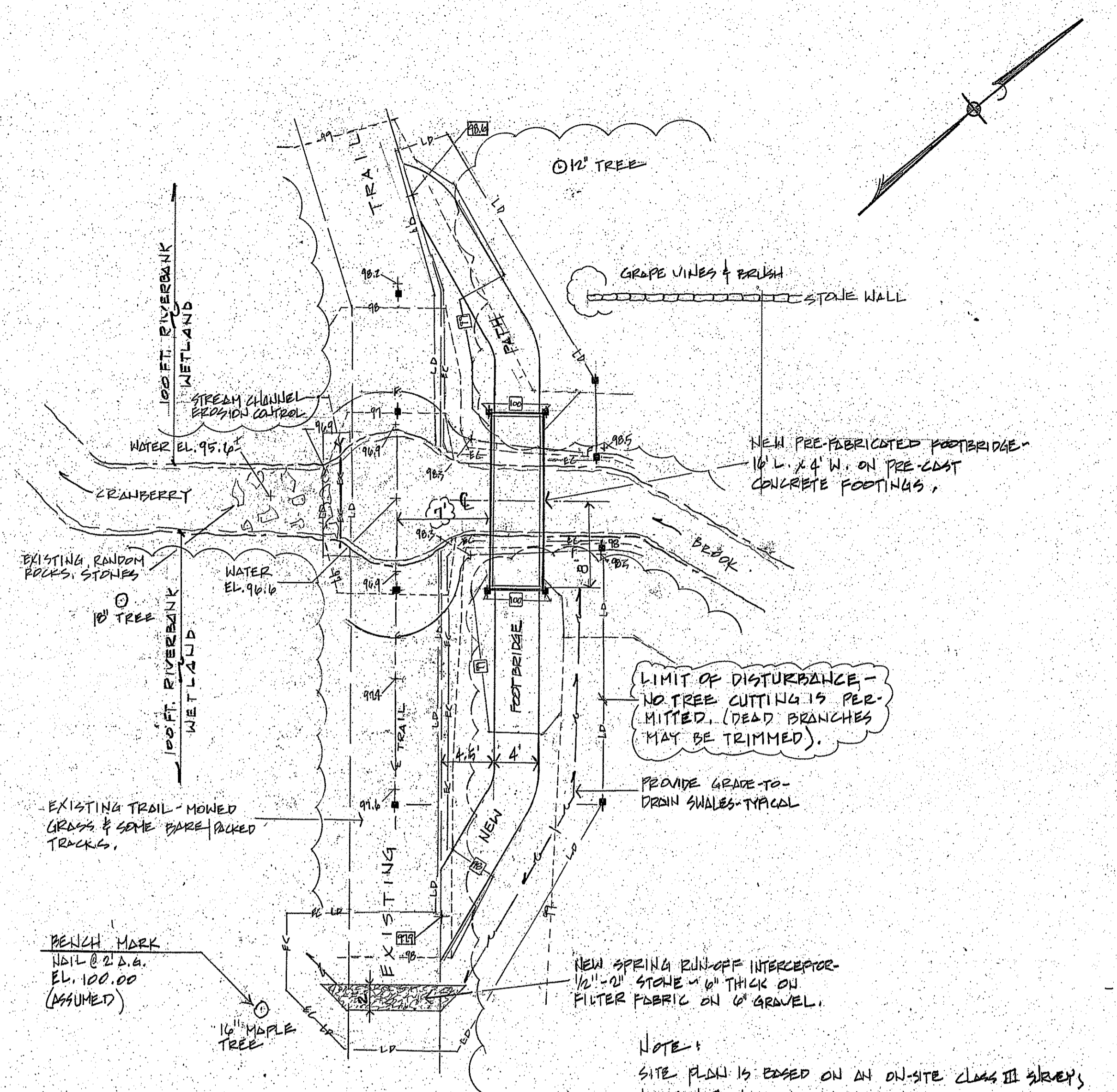
SYMBOL LEGEND

- EXISTING GRADES
- EXISTING SPOT ELEV.
- EXISTING EDGE OF FIELD
- EDGE OF STREAM CHANNEL (NORMAL FLOW)
- 100 YEAR STREAM FLOW LINE
- PROPOSED CONTOURS
- PROPOSED SPOT ELEV.
- PROPOSED LIMIT OF DISTURBANCE
- SEDIMENT & EROSION CONTROL LINE (STAKED HAY BALES OR EQUIVALENT)
- FIELD STAKE STAKES



NOTE: DETAIL IS BASED ON A 10 FOOT SPAN, FIBERGLASS SYSTEM BY E.T. TECHNICS; EQUIVALENT, ALTERNATE SYSTEMS WILL BE ACCEPTED.

FOOTBRIDGE DETAIL

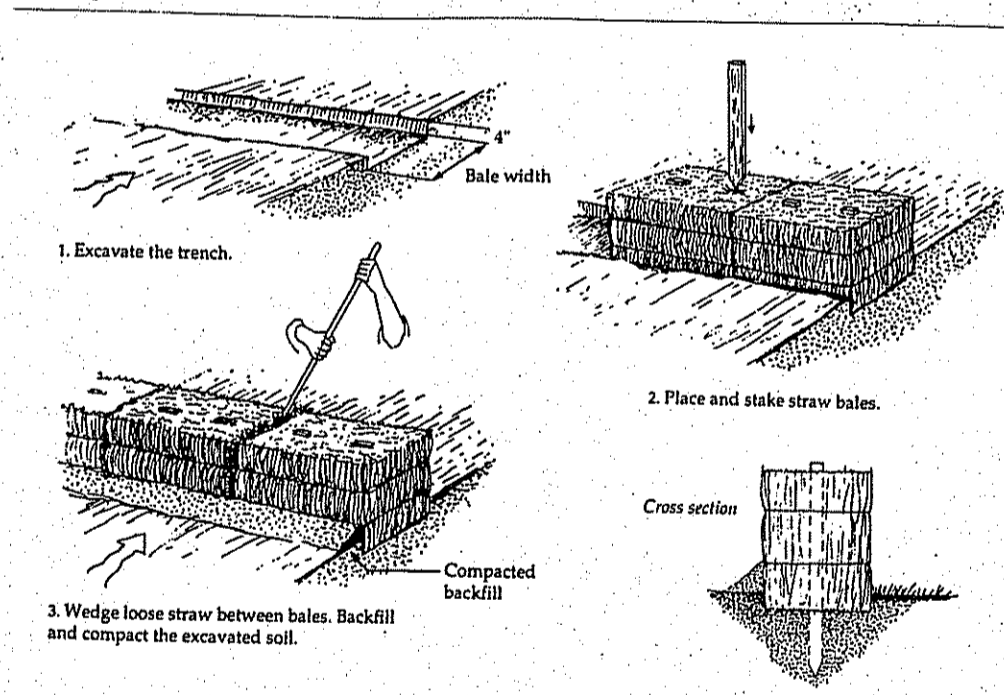


SITE PLAN - SCALE: 1/8" = 1'-0"

- SEDIMENT & EROSION CONTROL NOTES**
- INSTALL ALL EROSION CONTROL DEVICES PRIOR TO ANY SITE DISTURBANCE.
 - CHECK, REPAIR & MAINTAIN EROSION CONTROL DURING CONSTRUCTION; REMOVE AFTER COMPLETION.
 - RESTORE DISTURBED AREAS WITH 4" OF LOAM & CONSERVATION SEED MIX.
 - ANY TEMPORARY STOCKPILE OR MATERIAL AREAS MUST BE IN PREVIOUSLY CLEARED SECTIONS. PROVIDE EROSION CONTROL ON THE DOWN-SLOPE EDGE OF ERODIBLE MATERIALS.
 - PARKING OVERNIGHT - PLACE CONSTRUCTION VEHICLES IN THE GRAVEL DRIVEWAY OR 100 FEET FROM THE BROOK.
 - COMPLY WITH THE BEST MANAGEMENT PRACTICES AS OUTLINED IN RISESC HANDBOOK & RISES MANUAL.

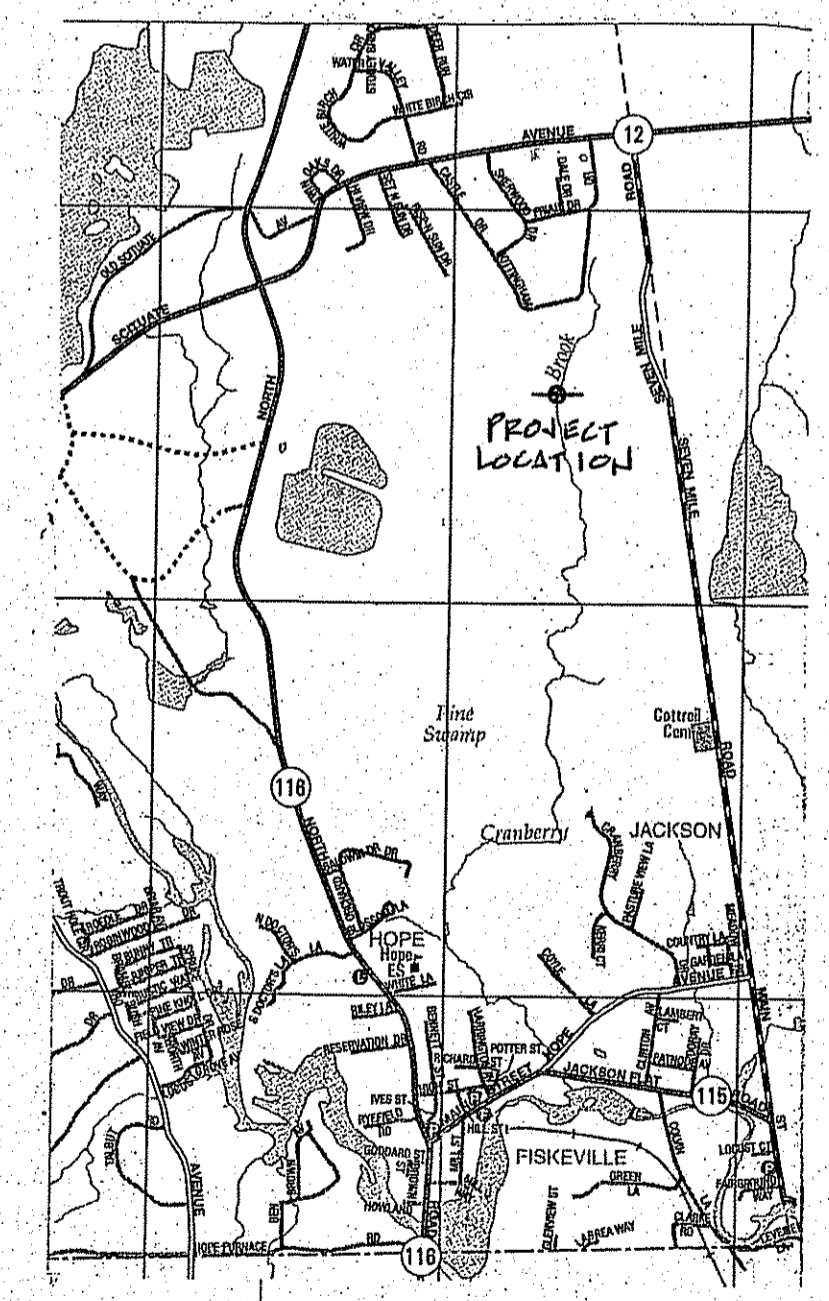


LOCATION PLAN - 1" = 400'

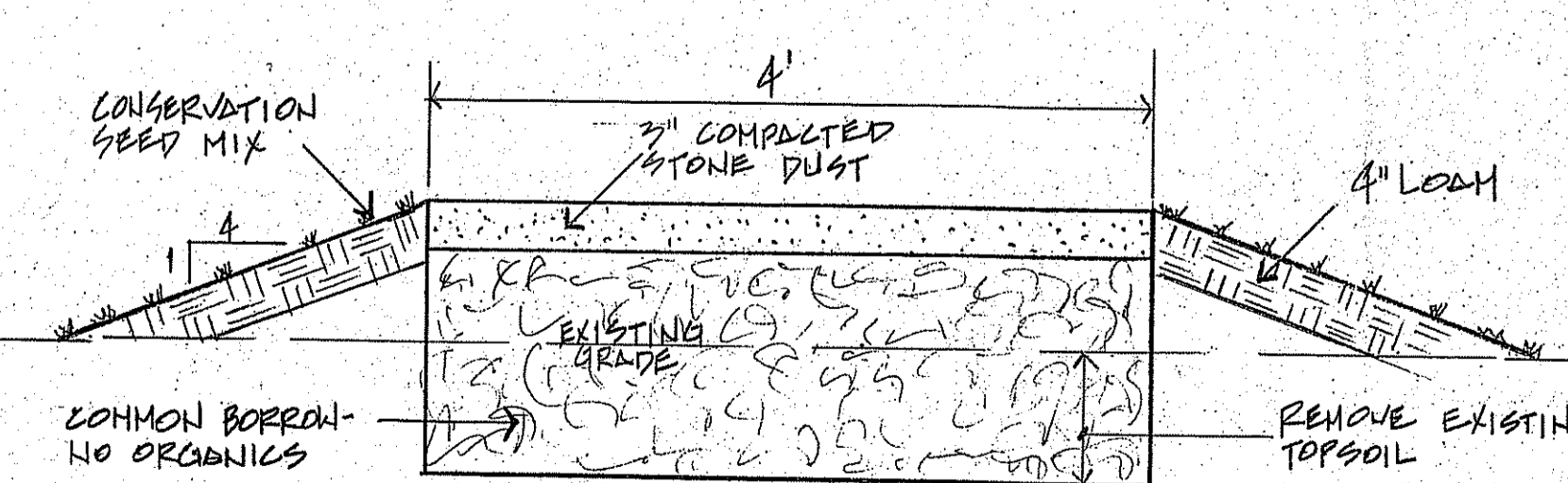


HAY BALE DETAIL

NOT TO SCALE



LOCUS MAP - 1" = 1/2 MI.

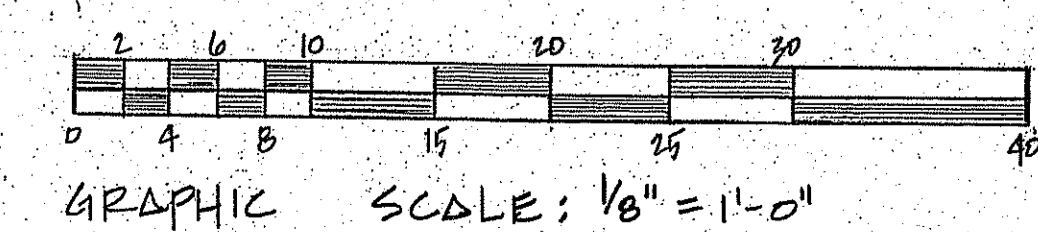
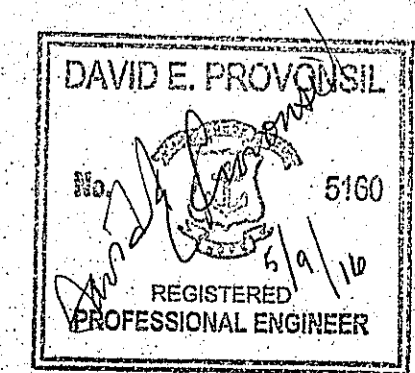


NEW FOOT PATH DETAIL

SCALE: 1" = 1'-0"

Kindly be advised that this Permit is not equivalent to a verification of the type or extent of freshwater wetlands on site.

DEPARTMENT OF ENVIRONMENTAL MANAGEMENT
OFFICE OF WATER RESOURCES
FRESHWATER WETLANDS PROGRAM
APPROVED WITH CONDITIONS
AS SPECIFIED IN THE LETTER OF APPROVAL
DATED JUN 10 2016 FILE # 15-0203
NO CHANGES ALLOWED WITHOUT PRIOR APPROVAL
APPROVED PLANS MUST BE AT CONSTRUCTION SITE



OWNER: TOWN OF SCITUATE - LAND TRUST
CHARLES THOMAS ANSELL (047-0882)
TOWN HALL - 195 DANIELSON PIKE (047-5701)
NORTH SCITUATE, RI 02857
ENGINEER: DAVID E. PROVOISIL, PE, TOWN ENGINEER
TOWN HALL - 195 DANIELSON PIKE (047-5701)
NORTH SCITUATE, RI 02857 (provoisil@scituate.org)

No.	REVISIONS	DATE
1	GEN COMMENTS	8-9-16

LANTON FARM
CENTRAL STREAM CROSSING
NEW FOOT BRIDGE
POLE #97 SEVEN MILE ROAD
AP 9-1, LOTS 9 & 21C SCITUATE, RI.

DATE: AUGUST 2016	DRWN. BY: D.E. PROVOISIL
SCALE: 1/8" = 1'-0" (GENERAL PLAN); 1/4" = 1'-0" (OTHERWISE)	DWG. No. FB-1
1	1