

# CROMPTON POND

## FISHING PIER & KAYAK ACCESS

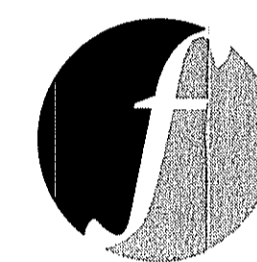
MANCHESTER STREET · WEST WARWICK · RHODE ISLAND

## PERMITTING DOCUMENTS

OCTOBER 2015

REVISED APRIL 2016

PREPARED FOR  
**TOWN OF WEST WARWICK**  
1170 MAIN STREET  
WEST WARWICK, RI 02893



PREPARED BY

**FUSS & O'NEILL**

317 IRON HORSE WAY, SUITE 204  
PROVIDENCE, RI 02908  
401.861.3070  
www.fando.com

### SHEET INDEX

<u>SHEET No.</u>	<u>SHEET TITLE</u>
GI-001	COVER SHEET
CS-101	SITE PLAN
CS-102	SITE PREPARATION PLAN
LP-101	SITE LANDSCAPE PLAN AND DETAILS
CD-501 - CD-502	DETAILS

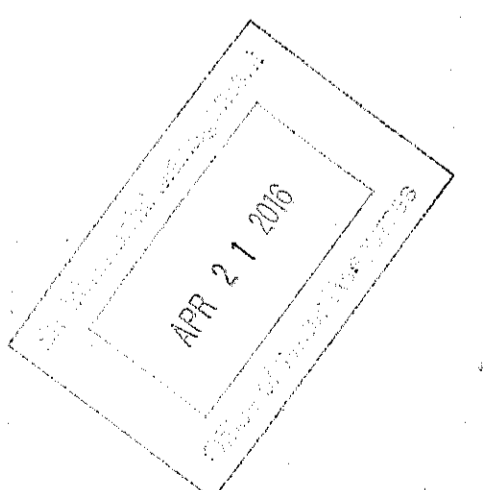


**LOCATION MAP**

SCALE: 1" = 500'

DEPARTMENT OF ENVIRONMENTAL MANAGEMENT  
OFFICE OF WATER RESOURCES  
FRESHWATER WETLANDS PROGRAM  
APPROVED WITH CONDITIONS  
AS SPECIFIED IN THE LETTER OF APPROVAL  
DATED JUN 10 2016 FILE # 15-0251  
NO CHANGES ALLOWED WITHOUT PRIOR APPROVAL  
APPROVED PLANS MUST BE AT CONSTRUCTION SITE

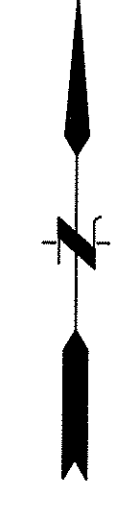
*Charles H. Herbert*



PROJ. No.: 20150860A10  
DATE: APRIL 2016

**GI-001**



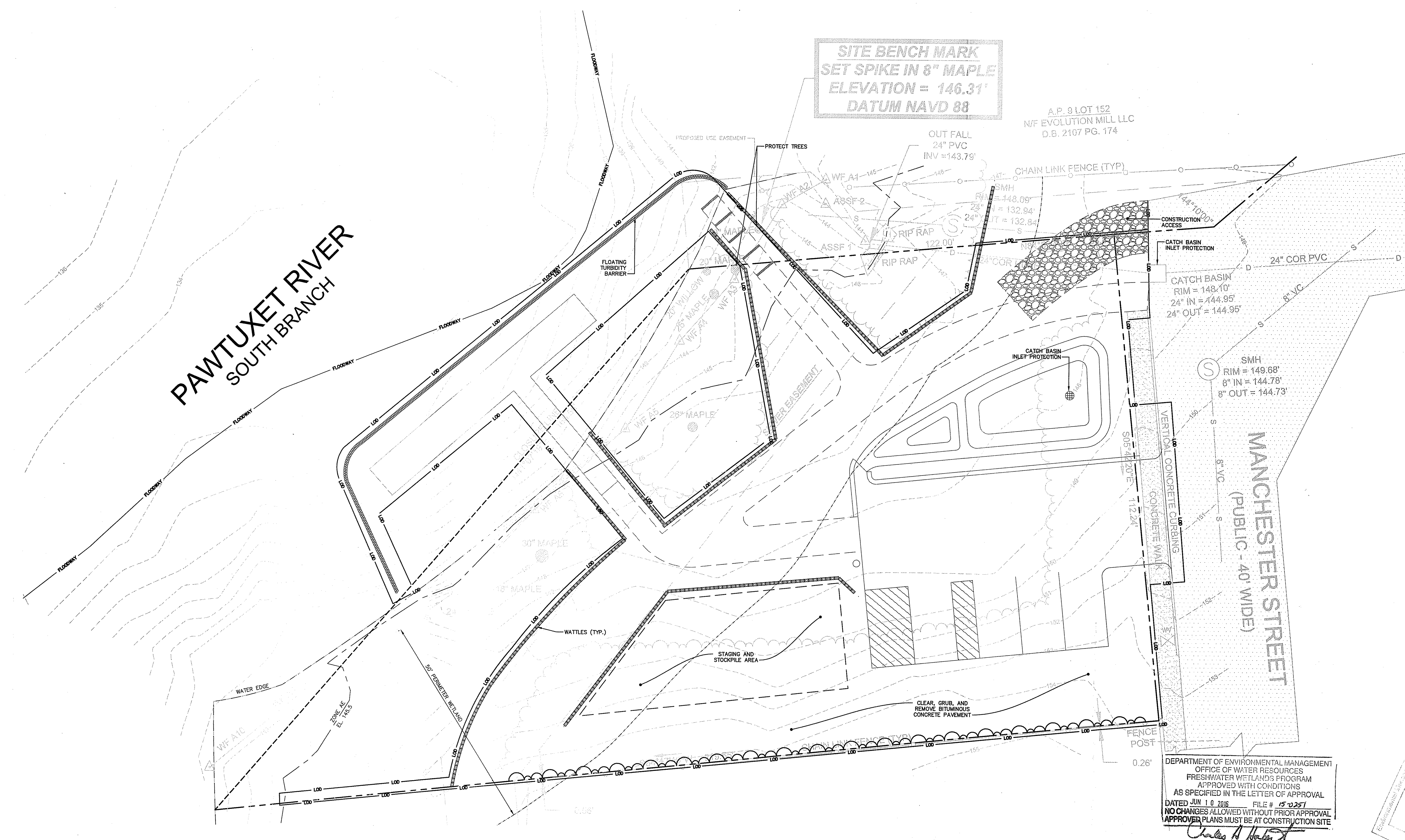


**SITE BENCH MARK**  
**SET SPIKE IN 8" MAPLE**  
**ELEVATION = 146.31'**  
**DATUM NAVD 88**

A.P. 9 LOT 152  
 N/F EVOLUTION MILL LLC  
 D.B. 2107 PG. 174

**PAWTUXET RIVER**  
**SOUTH BRANCH**

**MANCHESTER STREET**  
 (PUBLIC - 40' WIDE)



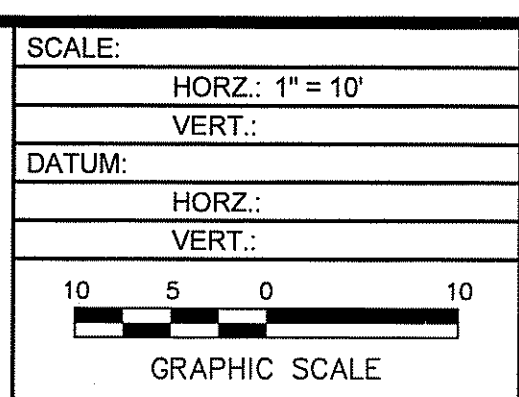
DEPARTMENT OF ENVIRONMENTAL MANAGEMENT  
 OFFICE OF WATER RESOURCES  
 FRESHWATER WETLANDS PROGRAM  
 APPROVED WITH CONDITIONS  
 AS SPECIFIED IN THE LETTER OF APPROVAL  
 DATED JUN 10 2016 FILE # 15-0251  
 NO CHANGES ALLOWED WITHOUT PRIOR APPROVAL  
 APPROVED PLANS MUST BE AT CONSTRUCTION SITE  
*Charles A. Herbert*

APR 21 2016  
 Office of Water Resources

File Path: F:\DWG\2016\08\01\0150860A10\0150860A10\_STP01.dwg Layout: CS-102 Plotted: Wed, April 20, 2016 - 2:12 PM User: aglines  
 MS VIEW: Layer State: Plotter: DWG TO PDF PC3 CTB File: FOSTB

No.	DATE	DESCRIPTION	DESIGNER	REVIEWER
1.	4/21/2016	RIDEM RESPONSE TO COMMENTS	AGG/BAK	SMM

SEAL	SEAL		
------	------	--	--

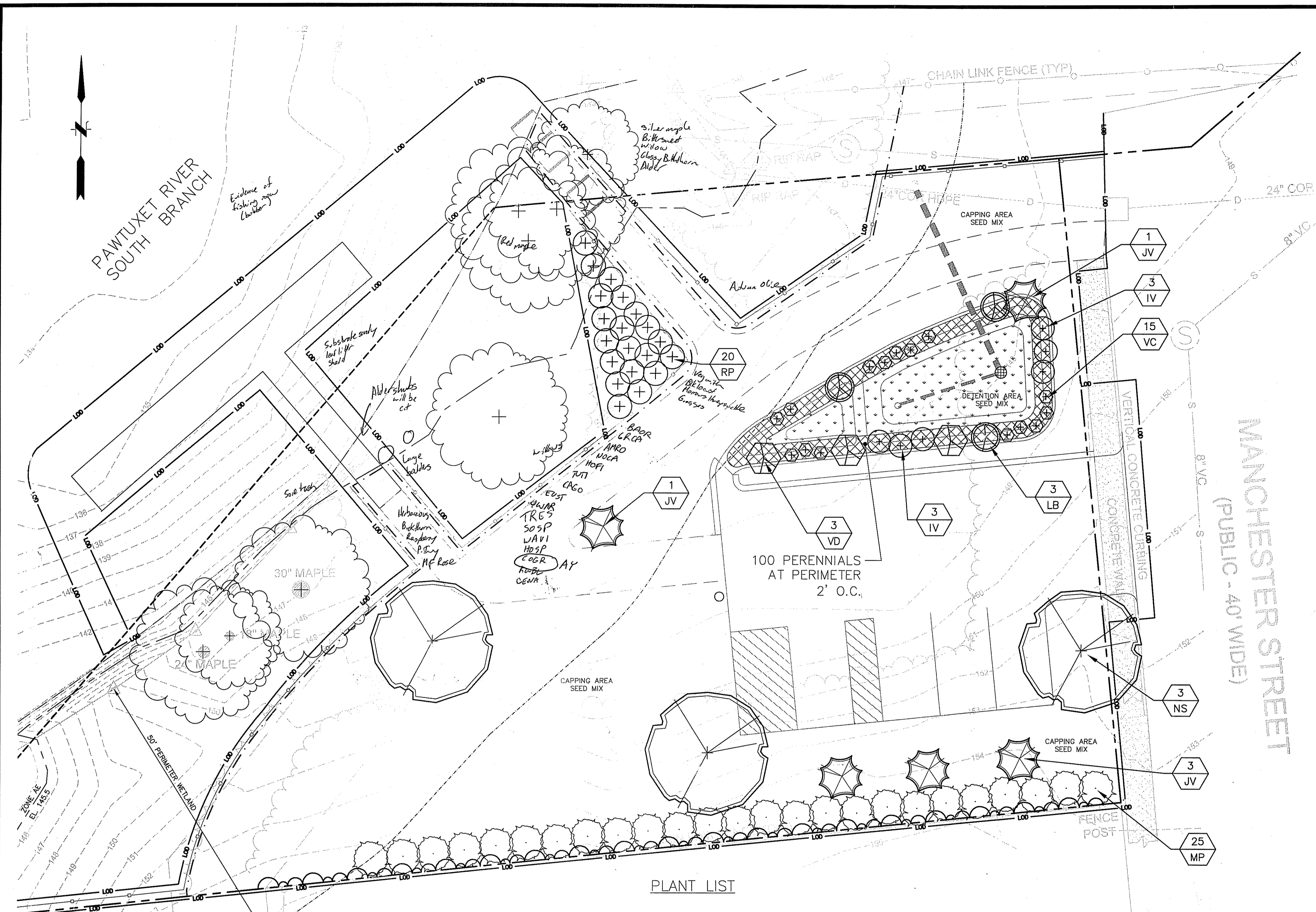


**f FUSS & O'NEILL**  
 317 IRON HORSE WAY, SUITE 204  
 PROVIDENCE, RI 02908  
 401.861.3070  
 www.fandoc.com

TOWN OF WEST WARWICK  
 SITE PREPARATION PLAN  
 CROMPTON POND FISHING PIER & KAYAK ACCESS  
 WEST WARWICK RHODE ISLAND

PROJ. No: 20150860A10  
 DATE: OCTOBER 2015  
**CS-102**

File Path: I:\DWG\20150860A10\Civil\Plan\20150860A10\_SITR01.dwg  
 LMS VIEW: 1. 4/21/2016 RIDEM RESPONSE TO COMMENTS  
 No. DATE DESCRIPTION DESIGNER REVIEWER



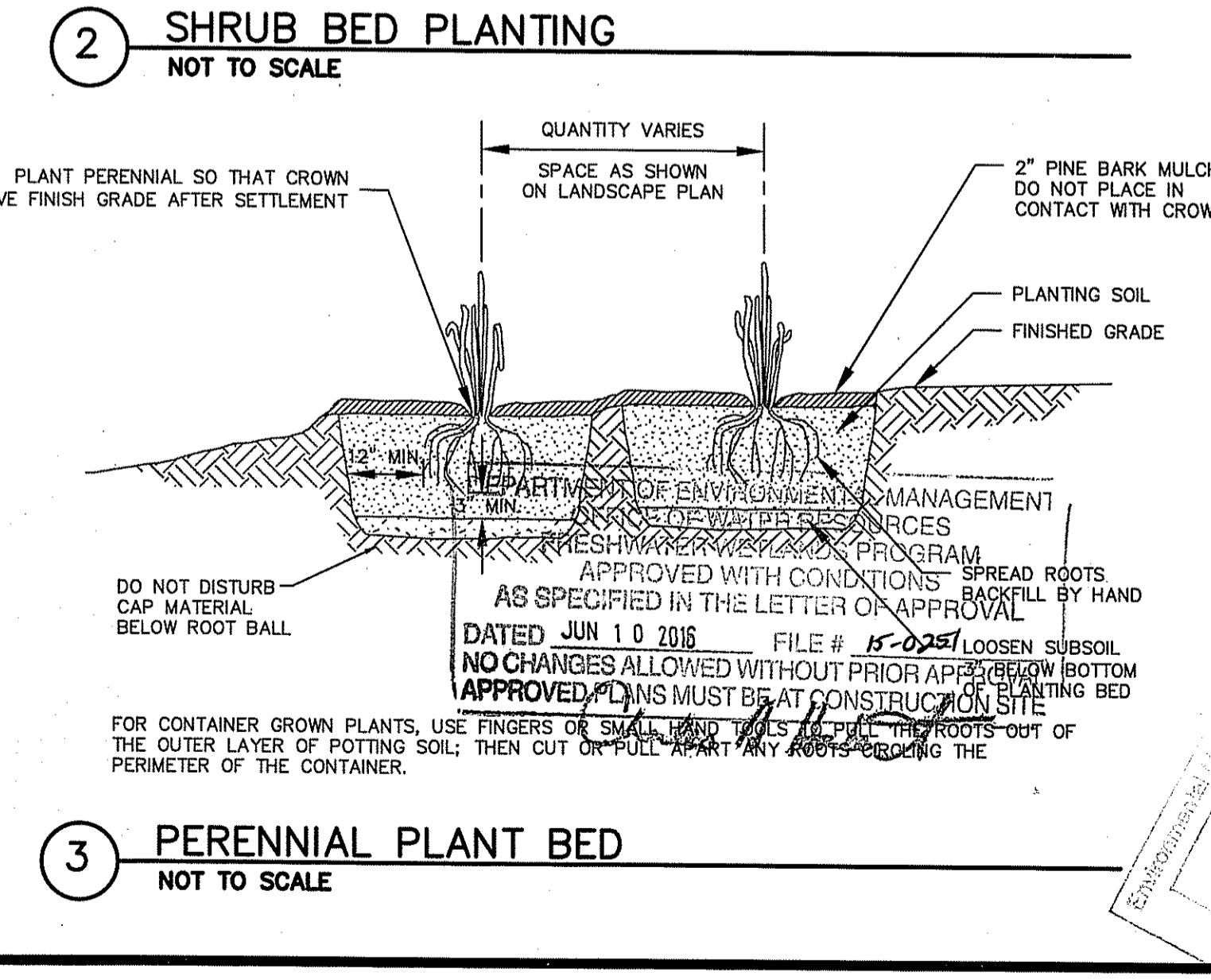
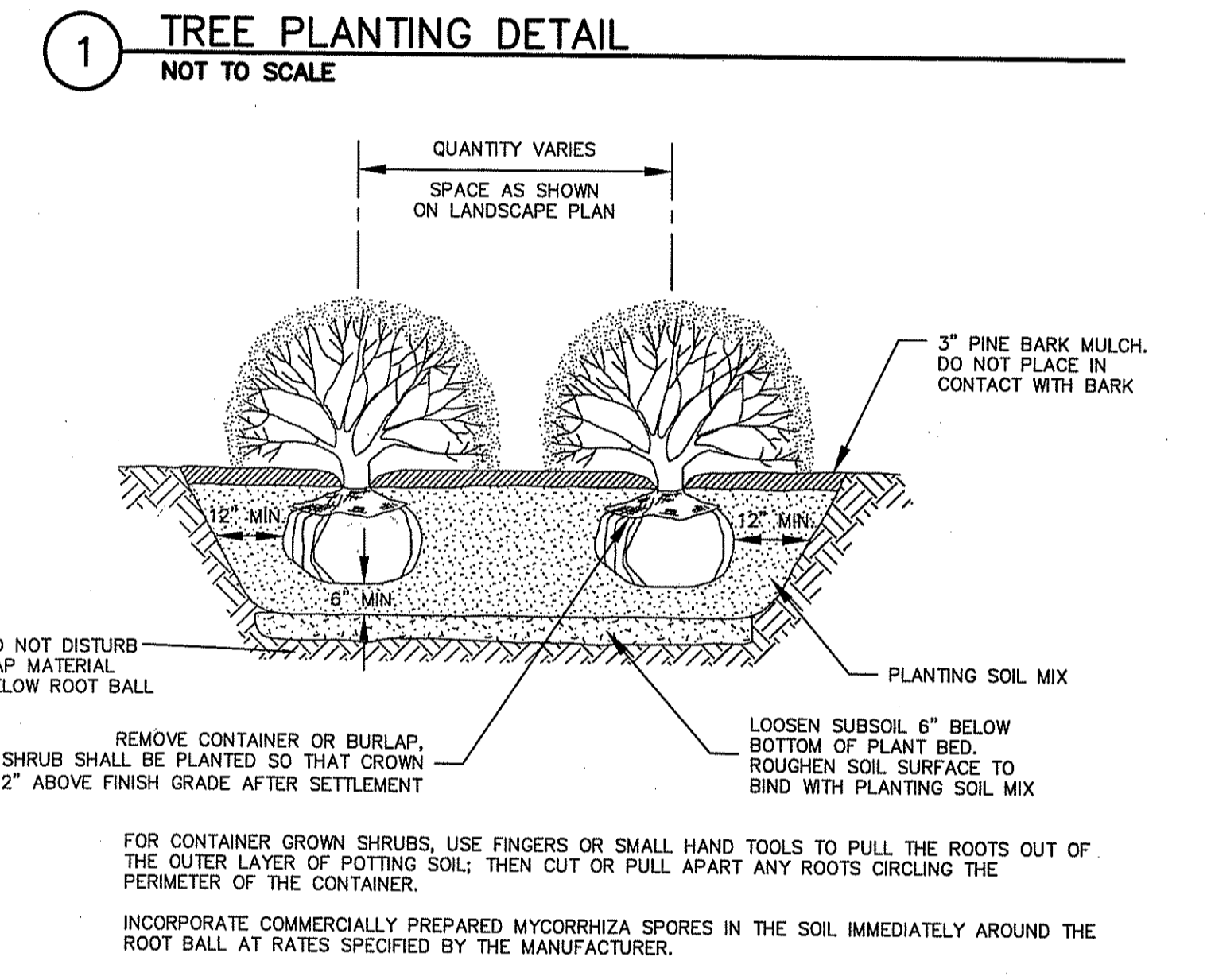
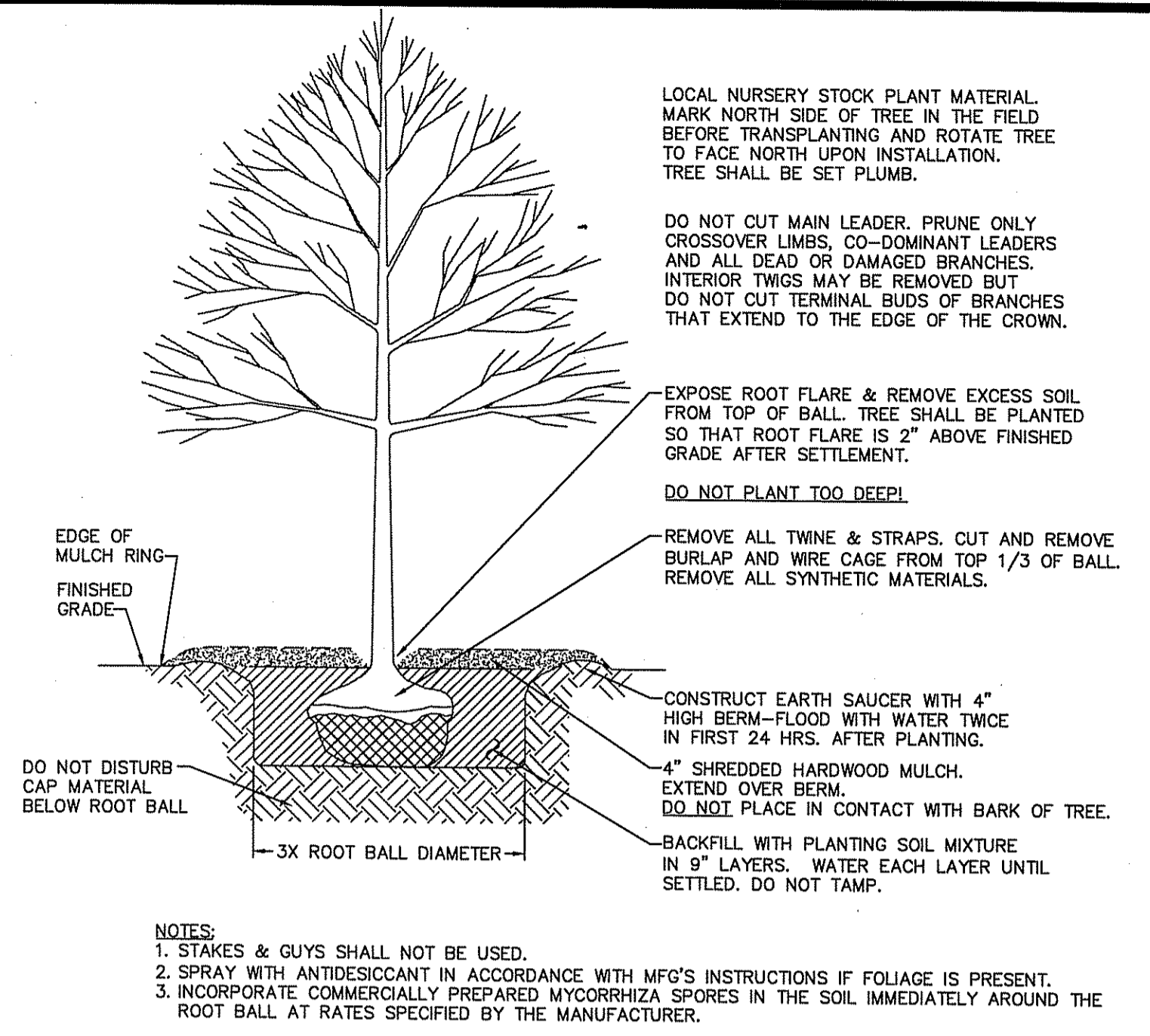
**SEED MIX SPECIFICATION**

**CAPPING AREA MIX**  
 25 POUNDS PER ACRE  
 MOW TWICE ANNUALLY  
 NEW ENGLAND WETLAND PLANTS "NATIVE WARM SEASON SEED MIX"  
 Switchgrass (*Panicum virgatum*), Creeping Red Fescue (*Festuca rubra*), Virginia Wild Rye (*Elymus virginicus*), Little Bluestem (*Schizachyrium scoparium*), Big Bluestem (*Andropogon gerardii*), Indian Grass (*Sorghastrum nutans*)

**DETENTION AREA MIX**  
 35 POUNDS PER ACRE  
 MOW ONCE ANNUALLY WHEN SOIL CONDITIONS PERMIT  
 NEW ENGLAND WETLAND PLANTS "EROSION CONTROL/RESTORATION MIX"  
 Virginia Wild Rye (*Elymus virginicus*), Creeping Red Fescue (*Festuca rubra*), Little Bluestem (*Schizachyrium scoparium*), Big Bluestem (*Andropogon gerardii*), Fox Sedge (*Carex vulpinoidea*), Switch Grass (*Panicum virgatum*), Rough Bentgrass (*Agrostis scabra*), New England Aster (*Aster novae-angliae*), Boneset (*Eupatorium perfoliatum*), Grass Leaved Goldenrod (*Euthamia graminifolia*), Green Bulrush (*Scirpus atrovirens*), Blue Vervain (*Verbena hastata*), Soft Rush (*Juncus effusus*), Wool Grass (*Scirpus cyperinus*).

**PLANT LIST**

TREES			
JV 5	JUNIPERUS VIRGINIANA	RED CEDAR	4-5' HT.
NS 3	NYSSA SYLVATICA	BLACK GUM	7-8' HT.
SHRUBS			
IV 6	ILEX VERTICILLATA	WINTERBERRY (1 MALE)	2-3' HT.
LB 3	LINDERA BENZOIN	SPICE BUSH	2-3' HT.
MP 25	MORELLA PENNSYLVANICA	NORTHERN BAYBERRY	2-3' HT.
RP 20	RUBUS IDAEUS	RASPBERRY	2-3' HT.
VC 15	VACCINIUM CORYMBOSUM	HIGHBUSH BLUEBERRY	2-3' HT.
VD 3	VIBURNUM DENTATUM	ARROWWOOD VIBURNUM	2-3' HT.
PERENNIALS - PLANT EACH SPECIES IN GROUPS OF 5 AT 2' O.C.			
20	ASTER PUNICEUS	SWAMP ASTER	2" PLUG
20	EUPATORIUM PURPUREUM	JOE PYE WEED	2" PLUG
20	HIBISCUS MOSCHUETOS	CRIMSON EYE ROSEMALLOW	2" PLUG
20	MONARDA FISTULOSA	WILD BERGAMOT	2" PLUG
20	RUDBECKIA LACINIATA	CUT LEAF CONEFLOWER	2" PLUG



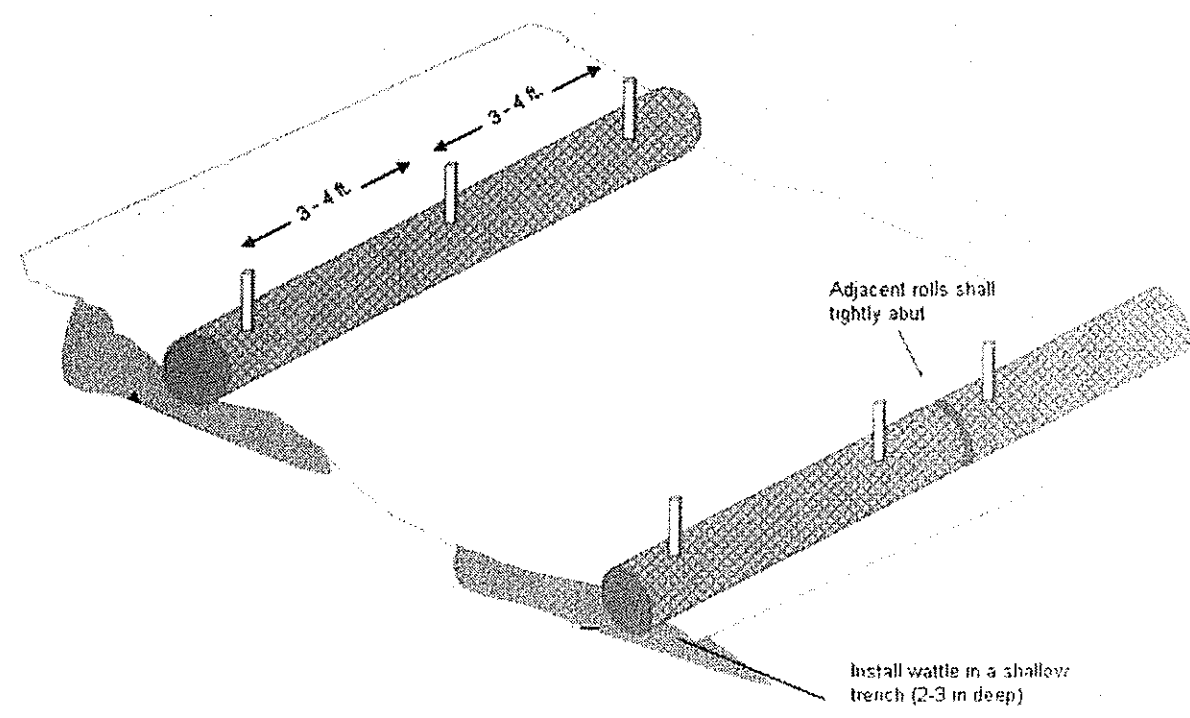
1.	4/21/2016	RIDEM RESPONSE TO COMMENTS	AGG/BAK	SMM
No.	DATE	DESCRIPTION	DESIGNER	REVIEWER

SEAL	SEAL
SCALE:	HORZ.: 1" = 10'
	VERT.:
DATUM:	HORZ.:
	VERT.:
10 5 0 10	
GRAPHIC SCALE	

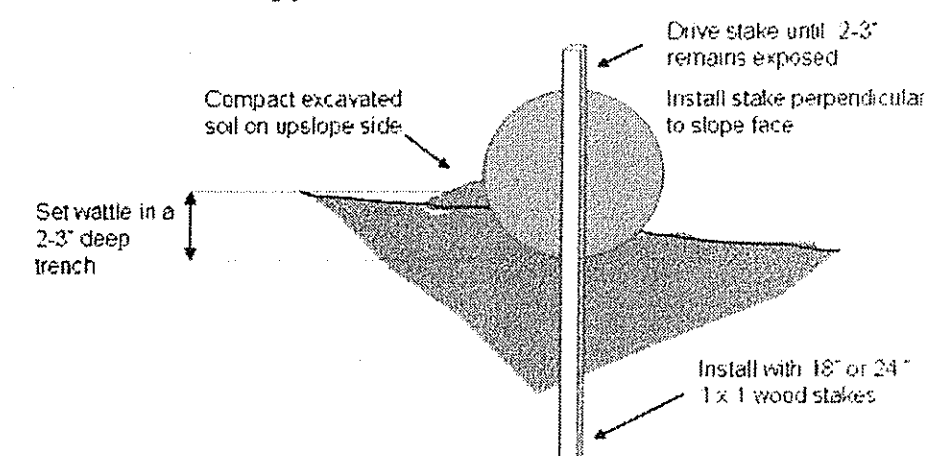
**FUSS & O'NEILL**  
 317 IRON HORSE WAY, SUITE 204  
 PROVIDENCE, RI 02908  
 401.861.3070  
 www.fandco.com

TOWN OF WEST WARWICK  
 SITE LANDSCAPE PLAN & DETAILS  
 CROMPTON POND FISHING PIER & KAYAK ACCESS  
 WEST WARWICK RHODE ISLAND

PROJ. No.: 20150860.A10  
 DATE: OCTOBER 2015  
**LP-101**



Typical Wattle Installation Guide

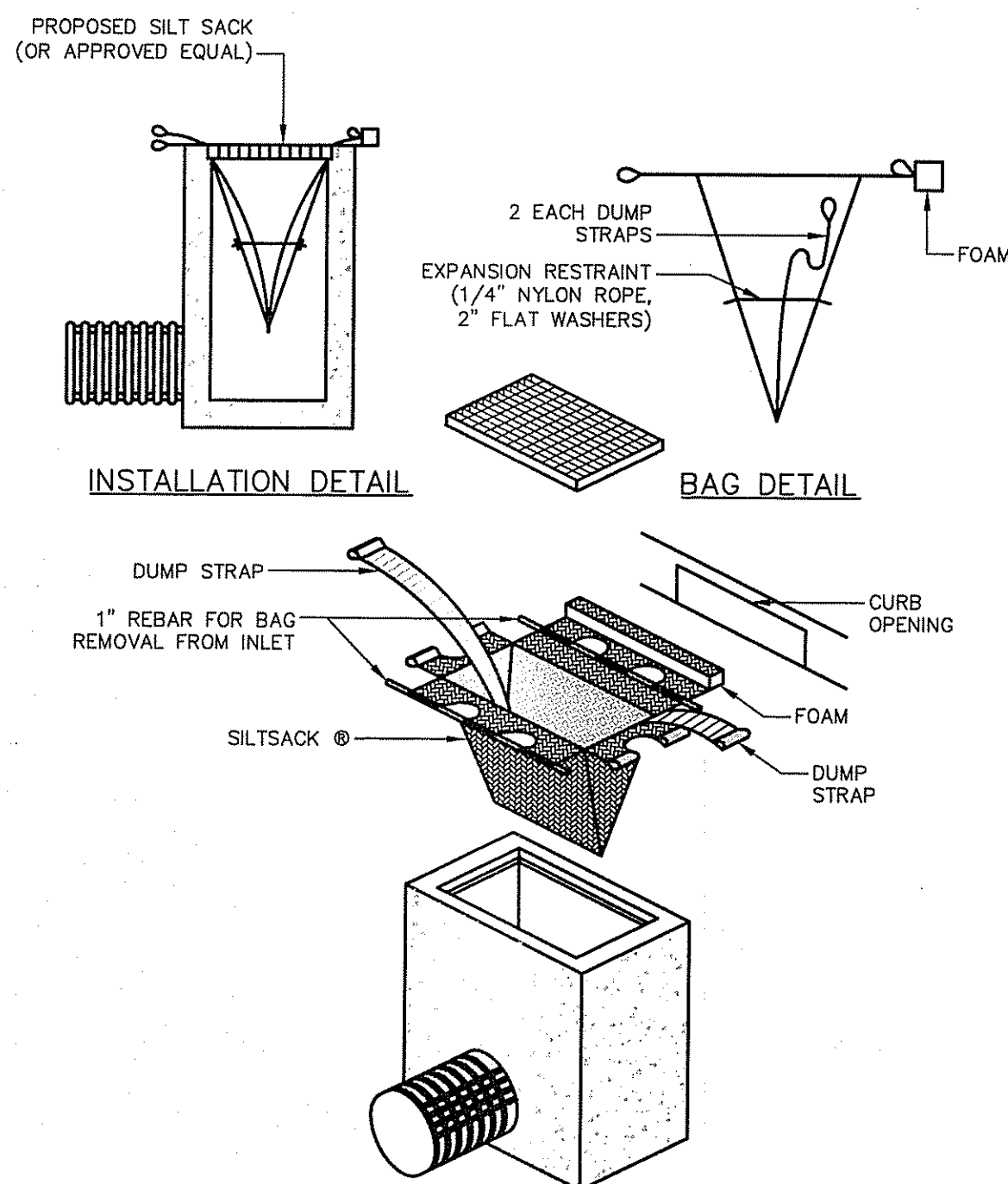


Entrenchment Detail

- NOTES:**
1. WATTLES SHALL BE INSTALLED BY THE CONTRACTOR AS INDICATED ON THE CONTRACT DRAWINGS.
  2. WATTLES SHALL BE TRENCHED APPROXIMATE 2-3 INCHES AND STAKED SUCH THAT WATTLES DIRECTLY CONTACT SOIL AND PRECLUDE UNDERMINING OR BLOWOUTS. THE TRENCH SHALL BE APPROXIMATELY 9 INCHES WIDE. STAKES SHALL BE DRIVEN THROUGH THE CENTER OF THE WATTLE AT A SPACING OF 3-4 FEET ON CENTER AND NO GREATER THAN 6" FROM THE EACH END OF THE WATTLE. STAKES SHALL BE 1-INCH BY 1-INCH WOODEN STAKES WITH A LENGTH OF 18-24 INCHES. COMPACT SOIL EXCAVATED TO CREATE TRENCH ON UPHILL SIDE SIDE.
  3. ENDS OF ADJACENT WATTLES SHALL BE TIGHTLY BUTTED OR OVERLAPPED SO THAT NO OPENING EXISTS FOR WATER TO PASS THROUGH. WATTLES SHALL BE FREE OF DAMAGE OR DEFECTS WHEN DELIVERED TO THE SHIPPER. NO VEHICLES SHALL BE DRIVEN OVER WATTLES.
  4. WATTLES SHALL BE 12-INCH WS1210 MANUFACTURED BY NORTH AMERICAN GREEN, OR APPROVED EQUAL.

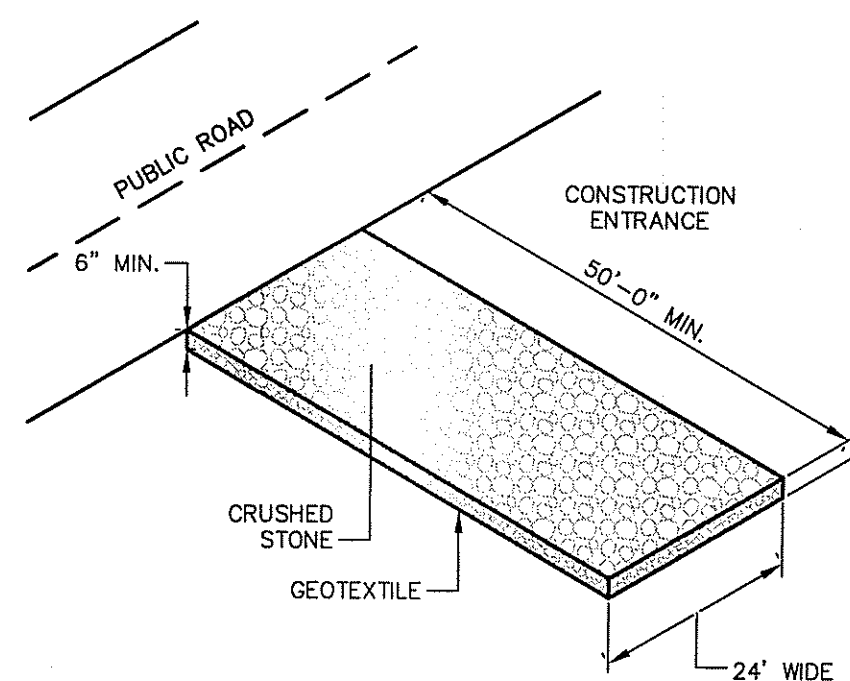
**WATTLES**

SCALE: N.T.S.



**CATCH BASIN INLET PROTECTION**

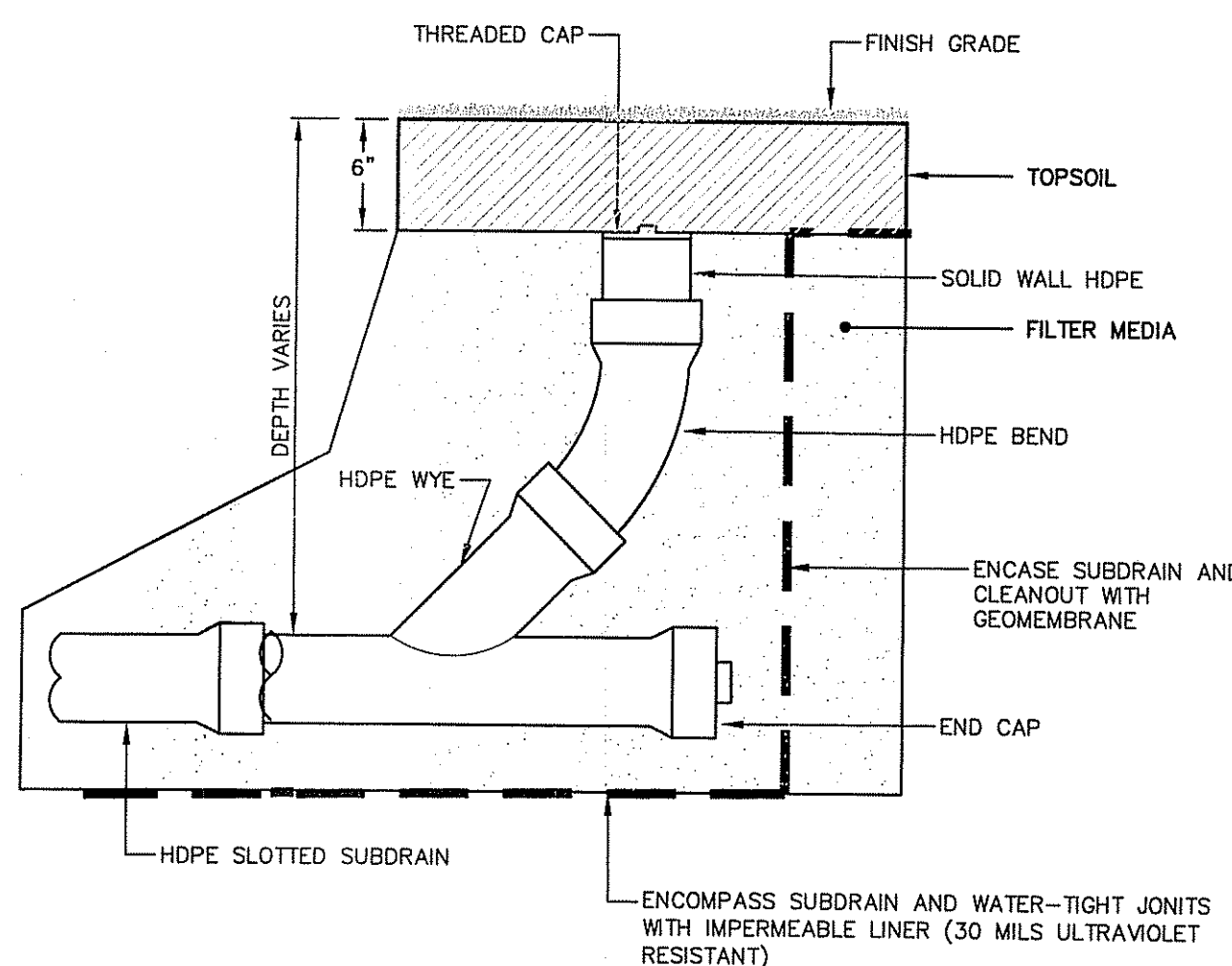
SCALE: N.T.S.



**NOTE:**  
SHALL BE IN ACCORDANCE WITH SECTION 211 OF THE R.I. STANDARD SPECIFICATIONS.

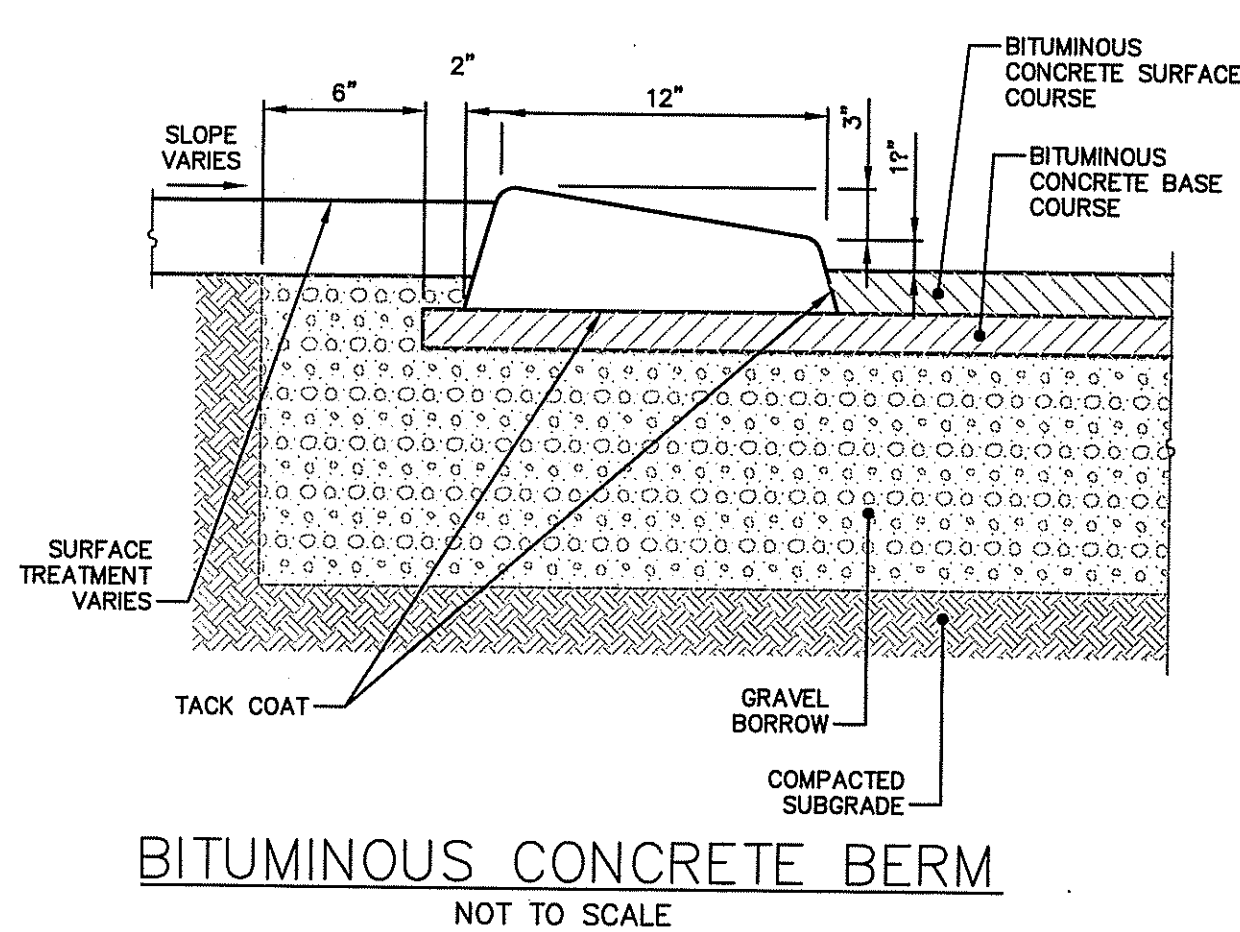
**CONSTRUCTION ACCESS (R.I. STD. 9.9.0)**

SCALE: N.T.S.



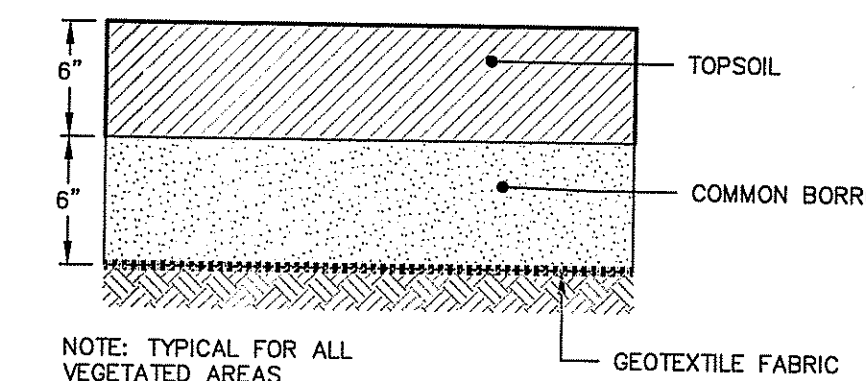
**SUBDRAIN CLEANOUT**

SCALE: N.T.S.



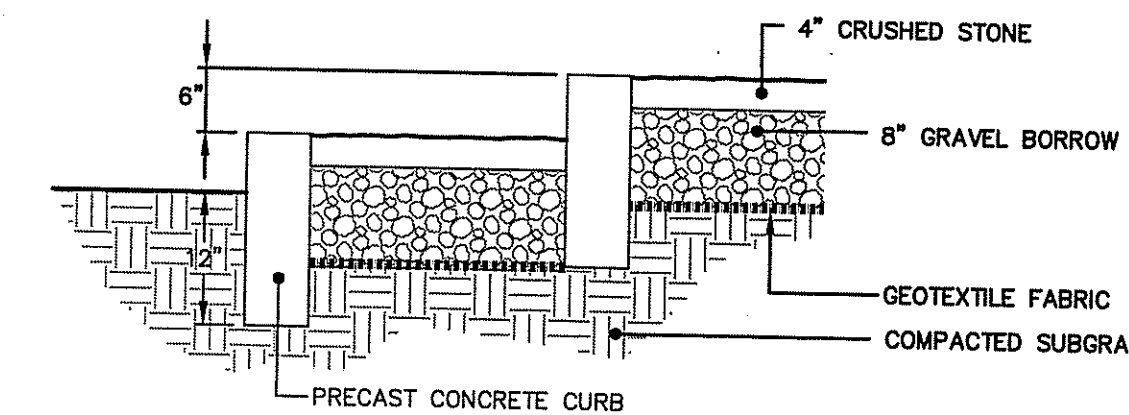
**BITUMINOUS CONCRETE BERM**

NOT TO SCALE



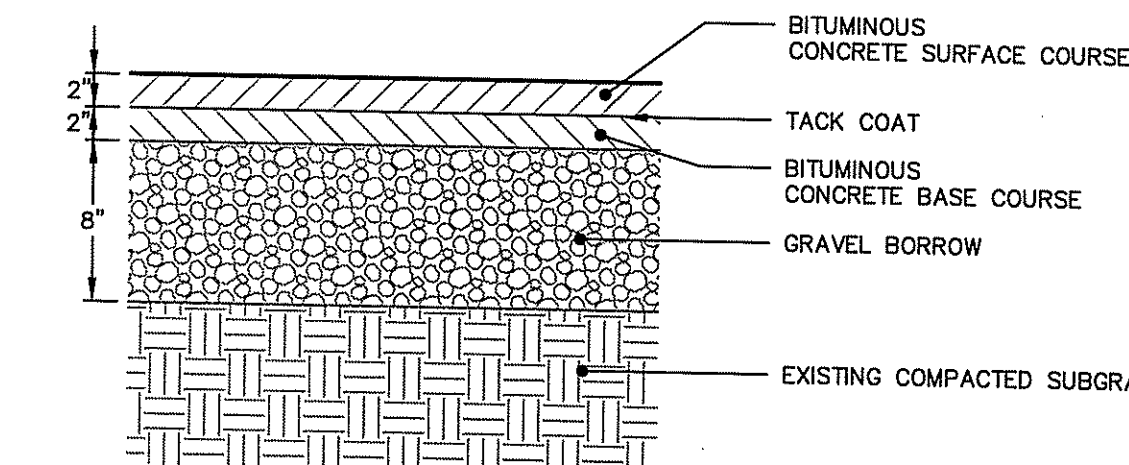
**LANDSCAPE CAP**

SCALE: N.T.S.



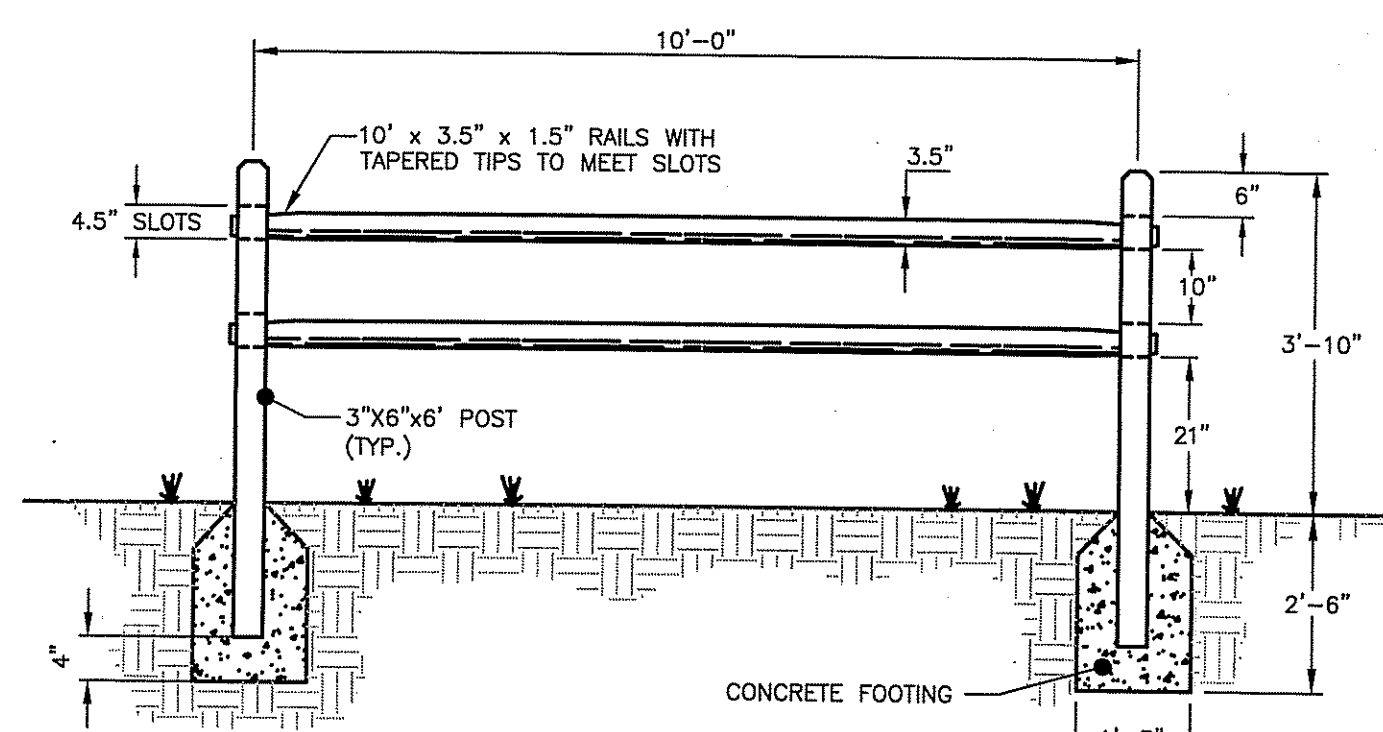
**CONCRETE STEPS**

SCALE: N.T.S.



**BITUMINOUS CONCRETE PAVEMENT**

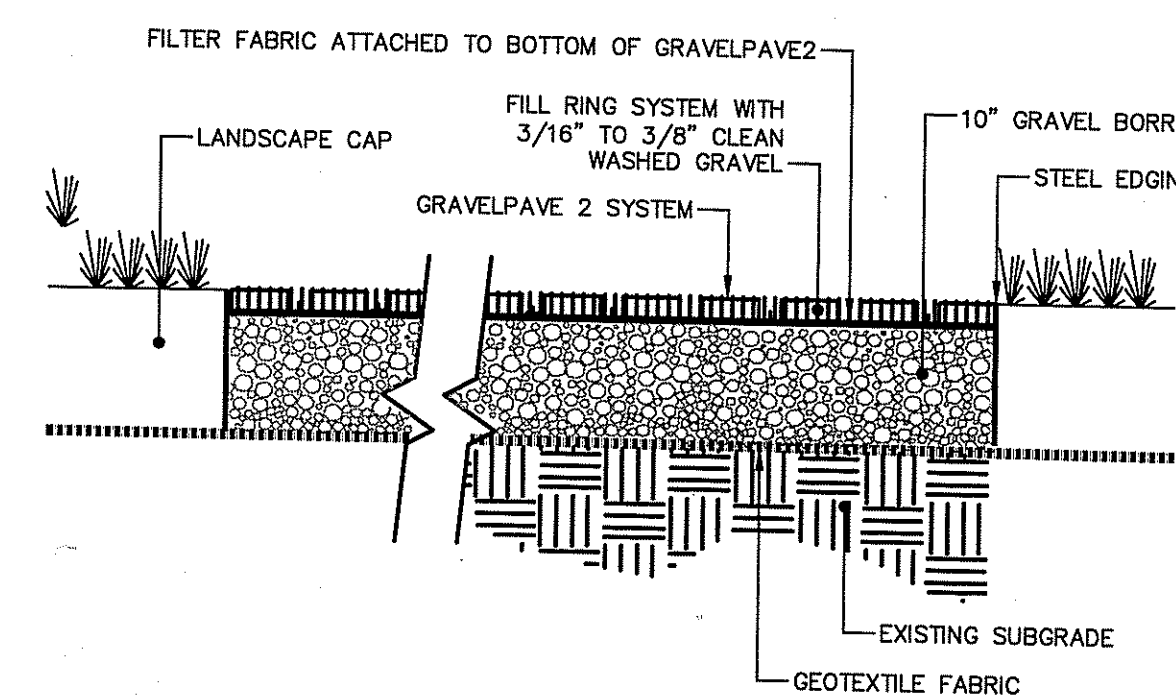
SCALE: N.T.S.



- NOTES:**
- 1) ALL WOOD FOR SPLIT RAIL FENCE TO BE PRESSURE TREATED.
  - 2) END POST SHALL BE TERMINAL POST.
  - 3) CONCRETE FOOTING SHALL BE 3,000 PSI.

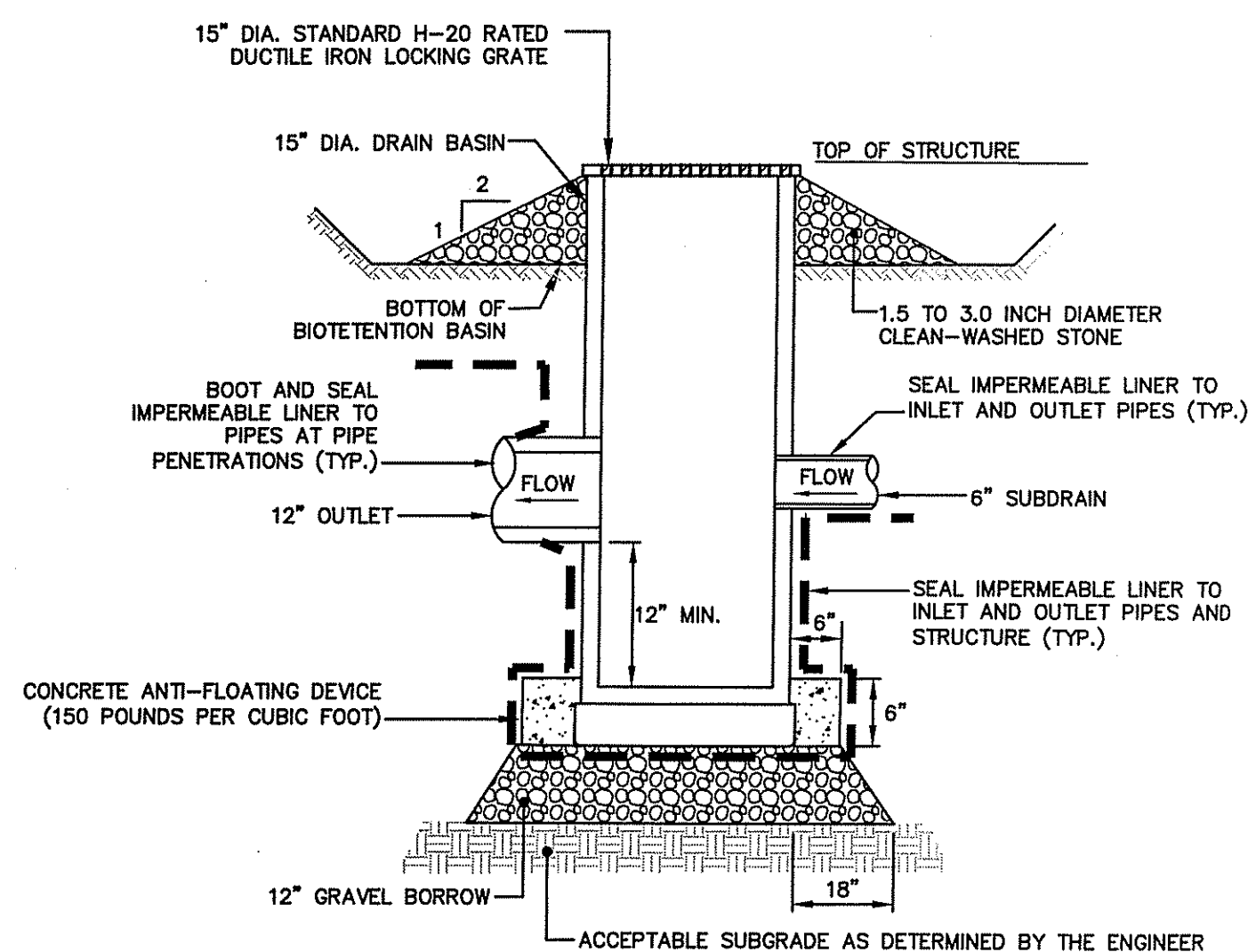
**SPLIT RAIL FENCE**

SCALE: N.T.S.



**REINFORCED GRAVEL WALKWAY**

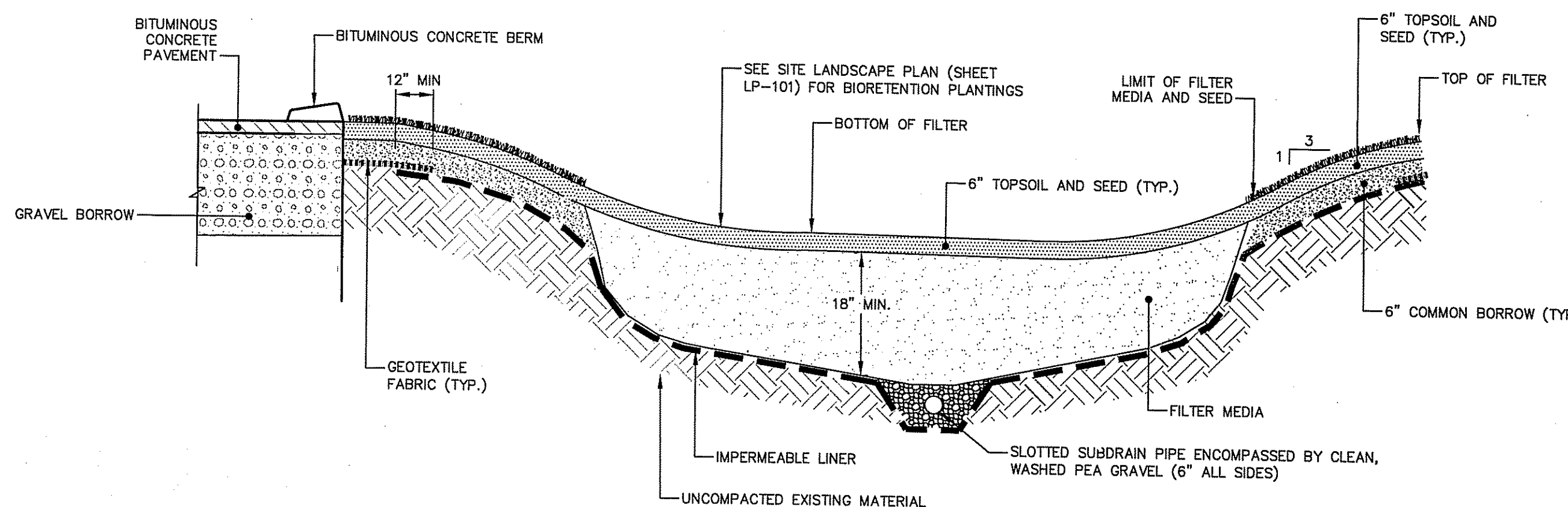
SCALE: N.T.S.



- NOTES:**
1. ENCOMPASS STRUCTURE WITH IMPERMEABLE LINER.
  2. PROVIDE WATER-TIGHT PIPE PENETRATIONS WITH IMPERMEABLE LINER.

**OVERFLOW DRAIN BASIN**

SCALE: N.T.S.



- NOTE:**
1. TOPSOIL WITHIN FILTER SHALL CONSIST OF LOAMY SAND WITH 20% BY VOLUME OF WELL-AGED, WELL-AERATED, LEAF COMPOST (OR APPROVED EQUIVALENT).
  2. FILTER MEDIA SHALL CONSIST OF USDA CLASSIFIED LOAMY SAND TO SANDY LOAM AND MEET THE FOLLOWING GRADATION:  
85-88% SAND  
8-12% SILT  
0-2% CLAY  
3-5% LEAF COMPOST

**BIORETENTION BASIN**

SCALE: N.T.S.

DEPARTMENT OF ENVIRONMENTAL MANAGEMENT  
OFFICE OF WATER RESOURCES  
FRESHWATER WETLANDS PROGRAM  
APPROVED WITH CONDITIONS  
AS SPECIFIED IN THE LETTER OF APPROVAL  
DATED JUN 10 2016 FILE # 15-0251  
NO CHANGES ALLOWED WITHOUT PRIOR APPROVAL  
APPROVED PLANS MUST BE AT CONSTRUCTION SITE

Environmental Management  
APR 21 2016  
City of West Warwick

File Path: J:\DWG\IP20160800A\10\Civil\Plan\20150800A10\_DET01.dwg Layout: CD-501 Plothead: Wed, April 20, 2016 - 2:12 PM User: aglines MS VIEW Plotter: DWG TO PDF.PC3 CTB File: FOSTB LAYER STATE:

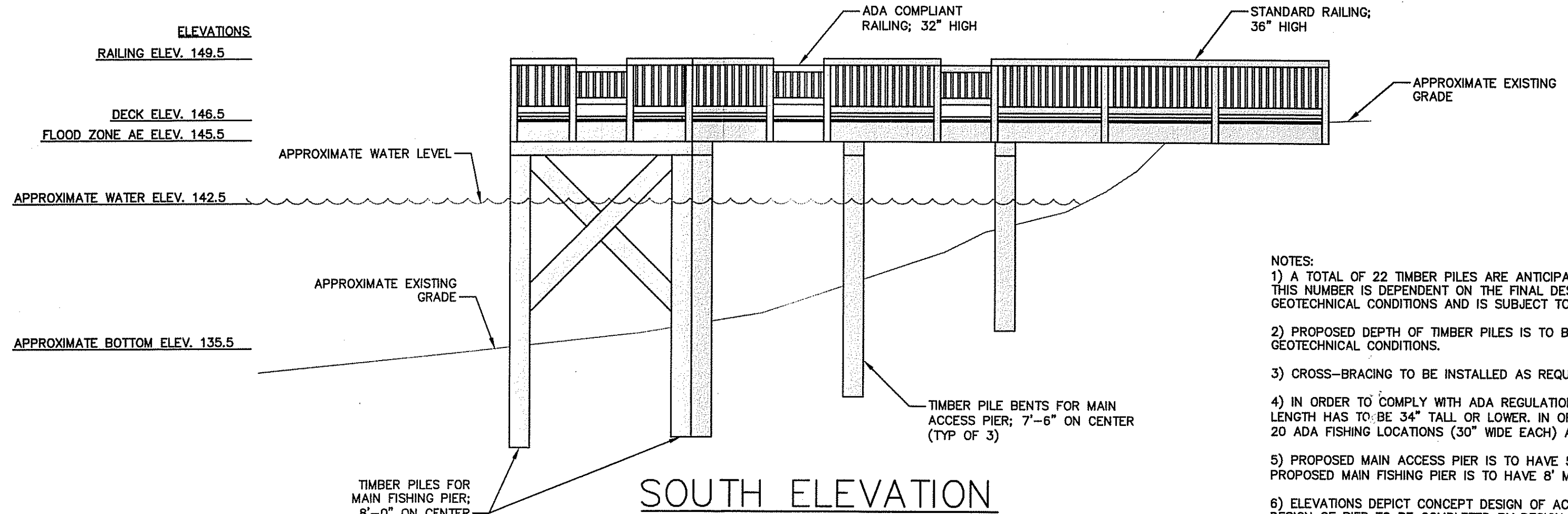
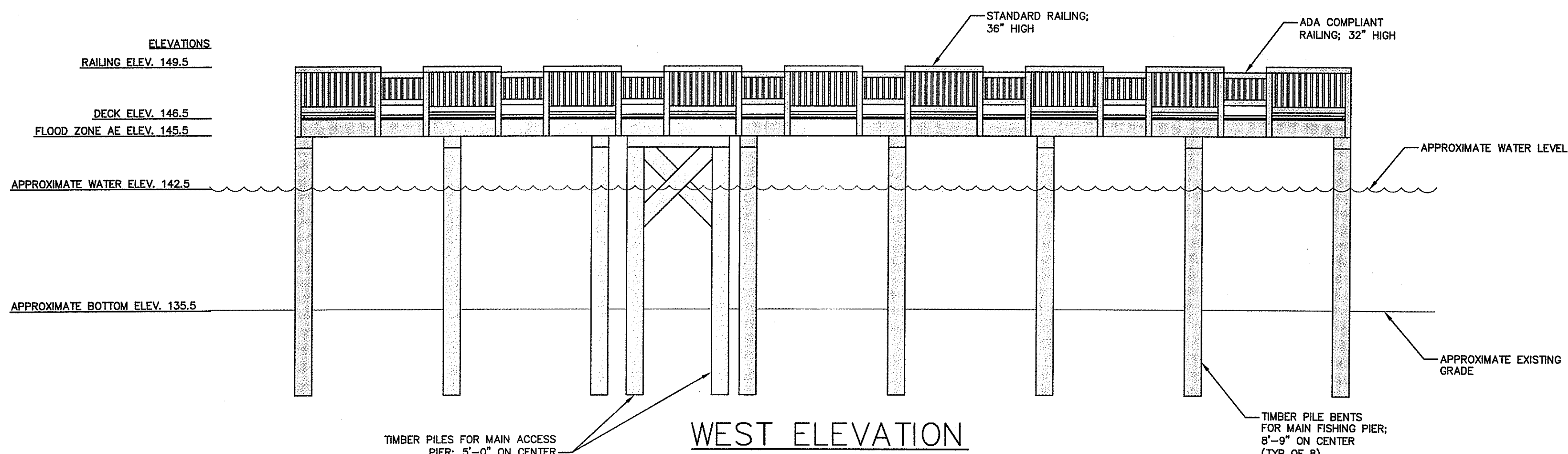
No.	DATE	DESCRIPTION	DESIGNER	REVIEWER
1.	4/21/2016	RIDEM RESPONSE TO COMMENTS	ACG/BAK	SMM

SEAL	SEAL	
SCALE:	HORIZ.: NOT TO SCALE	
	VERT.:	
DATUM:	HORIZ.:	
	VERT.:	
	GRAPHIC SCALE	

**FUSS & O'NEILL**  
317 IRON HORSE WAY, SUITE 204  
PROVIDENCE, RI 02908  
401.861.3070  
www.fandoo.com

TOWN OF WEST WARWICK  
DETAILS  
CROMPTON POND FISHING PIER & KAYAK ACCESS  
WEST WARWICK RHODE ISLAND

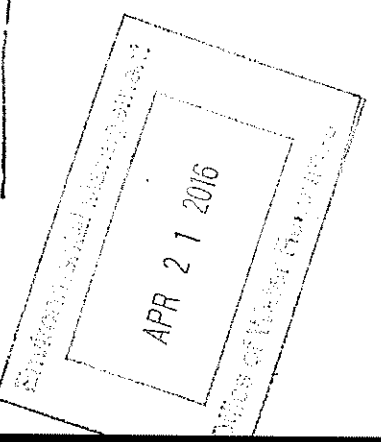
PROJ. No.: 20150800A10  
DATE: OCTOBER 2015  
CD-501



- NOTES:
- 1) A TOTAL OF 22 TIMBER PILES ARE ANTICIPATED FOR THE PROPOSED PIER. THIS NUMBER IS DEPENDENT ON THE FINAL DESIGN PARAMETERS AND EXISTING GEOTECHNICAL CONDITIONS AND IS SUBJECT TO CHANGE.
  - 2) PROPOSED DEPTH OF TIMBER PILES IS TO BE DETERMINED BASED ON GEOTECHNICAL CONDITIONS.
  - 3) CROSS-BRACING TO BE INSTALLED AS REQUIRED.
  - 4) IN ORDER TO COMPLY WITH ADA REGULATIONS; 25% OF THE TOTAL RAILING LENGTH HAS TO BE 34" TALL OR LOWER. IN ORDER TO MEET THIS REQUIREMENT, 20 ADA FISHING LOCATIONS (30" WIDE EACH) ARE PROPOSED.
  - 5) PROPOSED MAIN ACCESS PIER IS TO HAVE 5' MINIMUM CLEAR INTERIOR WIDTH. PROPOSED MAIN FISHING PIER IS TO HAVE 8' MINIMUM CLEAR INTERIOR WIDTH.
  - 6) ELEVATIONS DEPICT CONCEPT DESIGN OF ACCESSIBLE FISHING PIER. FINAL DESIGN OF PIER TO BE COMPLETED BY DESIGN-BUILD CONTRACTOR SELECTED BY OWNER. FINAL DESIGN SHALL COMPLY WITH OVERALL INTENT, EXTENTS, AND SCOPE OF CONCEPT.

**ACCESSIBLE FISHING PIER**  
SCALE: 1"=5'

DEPARTMENT OF ENVIRONMENTAL MANAGEMENT  
OFFICE OF WATER RESOURCES  
FRESHWATER WETLANDS PROGRAM  
APPROVED WITH CONDITIONS  
AS SPECIFIED IN THE LETTER OF APPROVAL  
DATED JUN 10 2016 FILE # 15-0251  
NO CHANGES ALLOWED WITHOUT PRIOR APPROVAL  
APPROVED PLANS MUST BE AT CONSTRUCTION SITE



File Path: J:\DWG\2015\0860A10\Civil\Plan\20150860A10\_DET01.dwg Layout: CD-502 Plotted: Wed, April 20, 2016 - 2:12 PM User: aglines  
 PLOTTER: DWG TO PDF.PC3 CTB File: FO.STB  
 LAYER STATE:

No.	DATE	DESCRIPTION	DESIGNER	REVIEWER
1.	4/21/2016	RIDEM RESPONSE TO COMMENTS	AGG/BAK	SMM

SEAL	SEAL	
------	------	--

SCALE:

HORZ.: AS NOTED

VERT.: \_\_\_\_\_

DATUM: \_\_\_\_\_

HORZ.: \_\_\_\_\_

VERT.: \_\_\_\_\_

0

GRAPHIC SCALE

**f** **FUSS & O'NEILL**  
 317 IRON HORSE WAY, SUITE 204  
 PROVIDENCE, RI 02908  
 401.861.3070  
 www.fando.com

TOWN OF WEST WARWICK

DETAILS

CROMPTON POND FISHING PIER & KAYAK ACCESS

WEST WARWICK RHODE ISLAND

PROJ. No.: 20150860.A10  
 DATE: OCTOBER 2015

**CD-502**

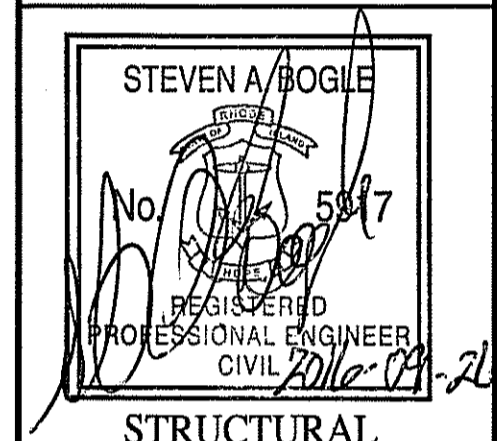
NO	DATE	REVISIONS
1	9-23-16	ADDED CRIBBING

GENERAL NOTES  
 ALL CONSTRUCTION SHALL CONFORM TO ALL CODES AND REGULATIONS HAVING JURISDICTION OVER THE PROJECT INCLUDING BUT NOT LIMITED TO THE RHODE ISLAND STATE BUILDING CODE REGULATION SBC-1-2013 ICC/ANSI A117.3, THE AMERICANS WITH DISABILITIES ACT AND THE RHODE ISLAND LIFE SAFETY CODE.

2. IT IS THE RESPONSIBILITY OF THE CONTRACTOR TO INSURE COMPLIANCE WITH SAID CODES AND MODIFY THE SPECIFICATIONS AS NEEDED TO COMPLY WITH SUCH CODES.

3. DESIGNER OF THESE PLANS SHALL NOT BE HELD LIABLE FOR ANY DEVIATION AND/OR MODIFICATIONS TO DRAWINGS BY THE OWNERS AND/OR THE CONTRACTOR AND SUB-CONTRACTORS.

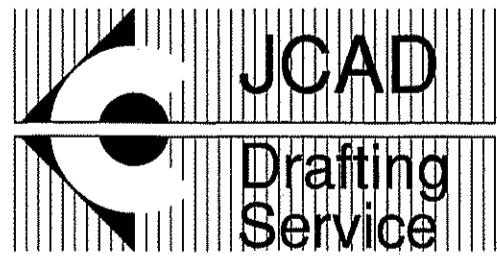
ENGINEER  
 STEVEN A. BOGLE, PE d/b/a  
**SAB**  
 ENGINEERING  
 47 MOHILL AVENUE  
 SWANSEA, MASSACHUSETTS  
 (508) 672-3875



**STRUCTURAL**  
 DATE: AUGUST 19, 2016  
 PROJECT NO.: 2016-42  
 DRAWN BY: J.C.  
 SCALE: AS NOTED  
 CHECKED BY: S.A.B.

PROJECT:  
 PAWTUXET RIVER PIER  
 WEST WARWICK, RI

CONTRACTOR:  
**DAR**  
 CONSTRUCTION  
 SERVICES  
 P.O. BOX 857  
 REHOBOTH, MA 02769  
 (508) 380-1337

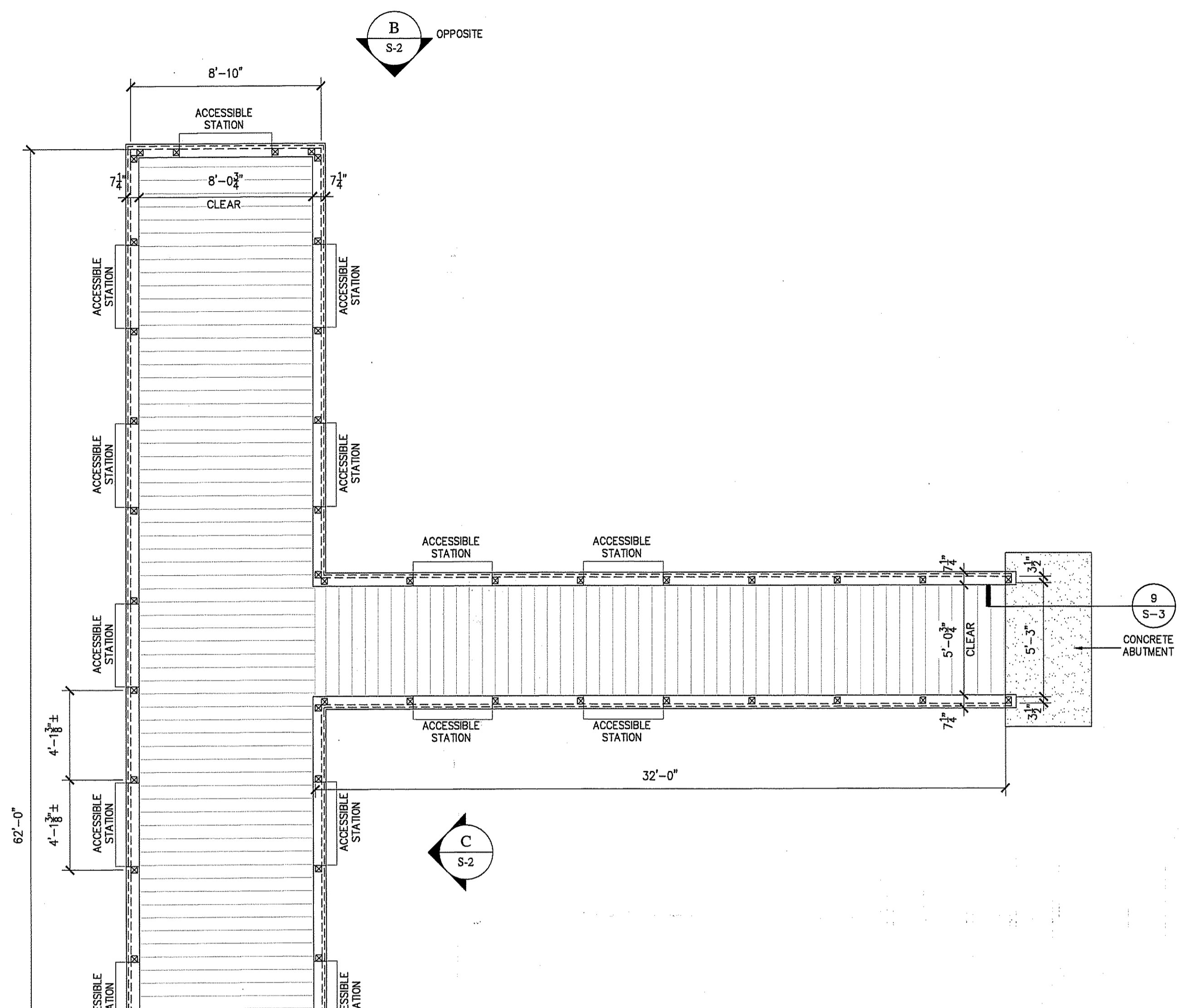


100 MAYFLOWER DRIVE • SEBEKONK, MA 02771  
 TEL-508-336-7147 • FAX-508-336-9105

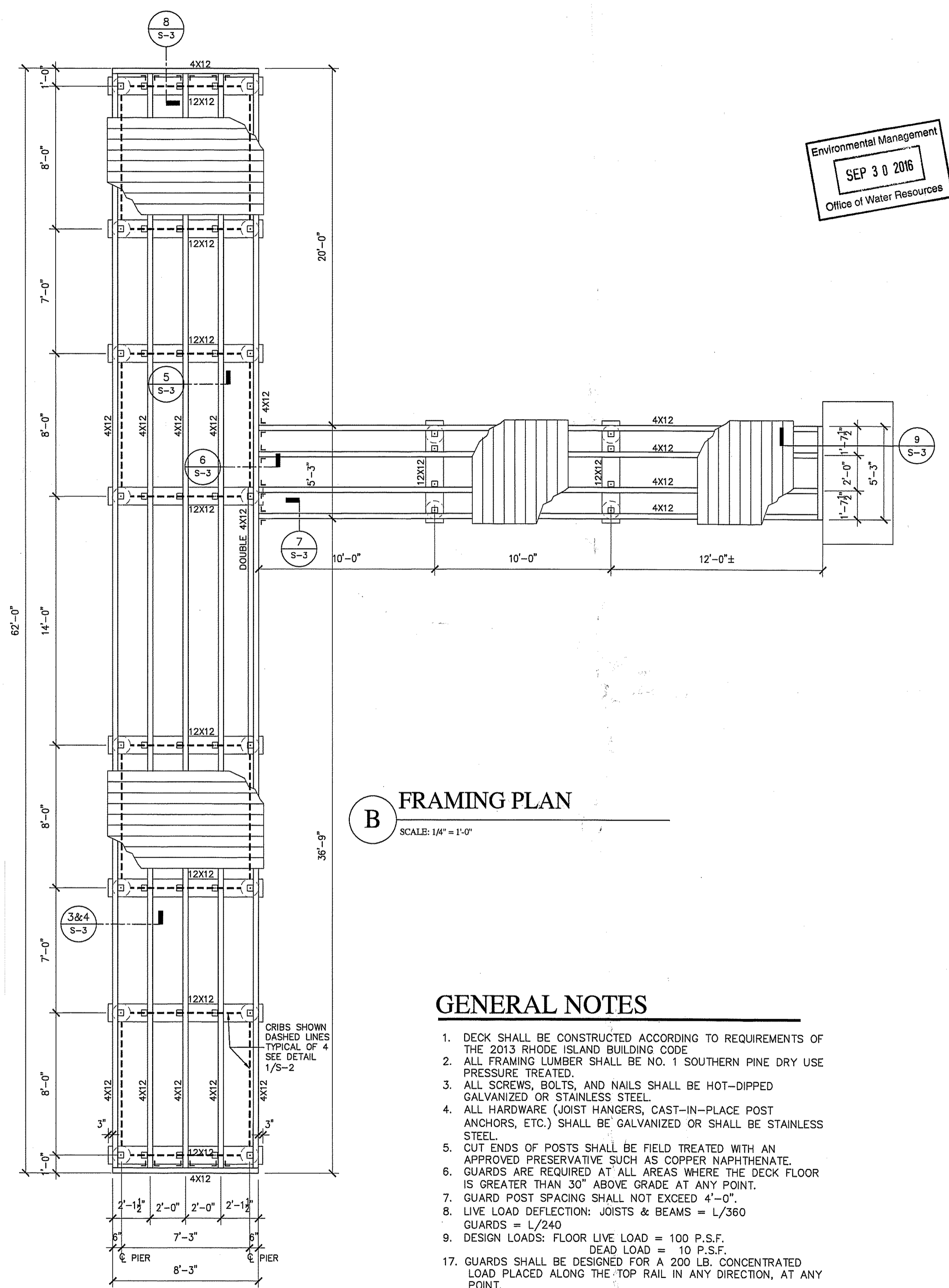
TITLE  
**FLOOR PLAN  
 AND  
 FRAMING PLAN**

SHEET NO.  
**S-1**

Environmental Management  
 SEP 30 2016  
 Office of Water Resources



**A FLOOR PLAN**  
 SCALE: 1/4" = 1'-0"

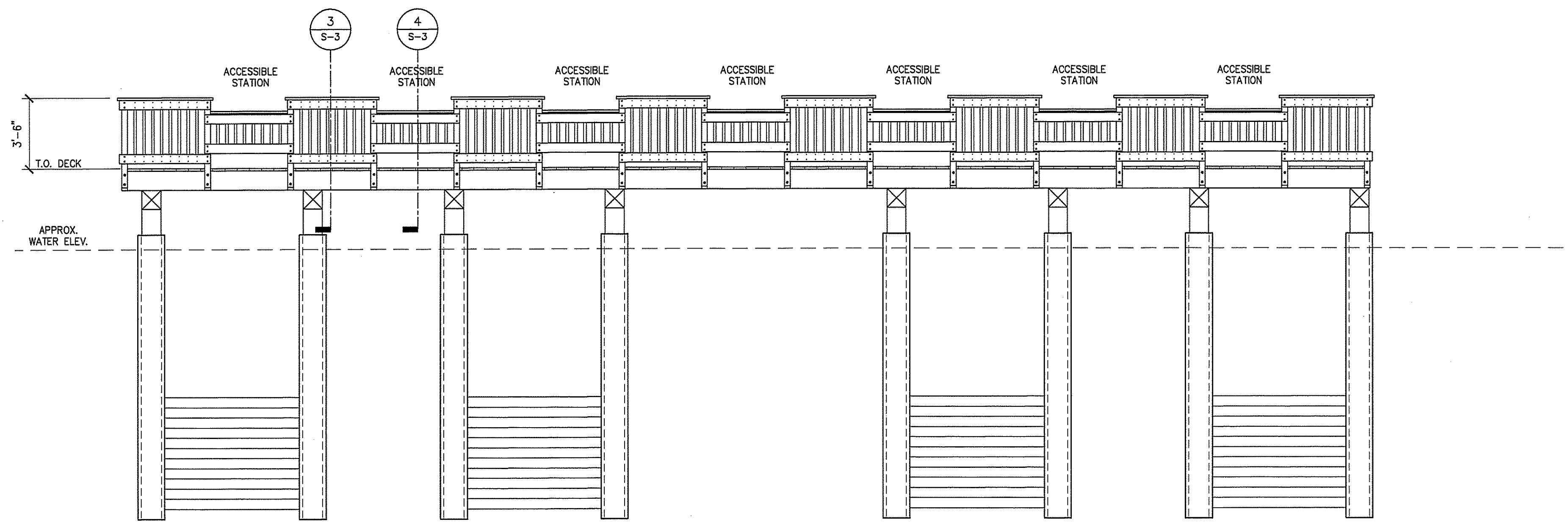


**B FRAMING PLAN**  
 SCALE: 1/4" = 1'-0"

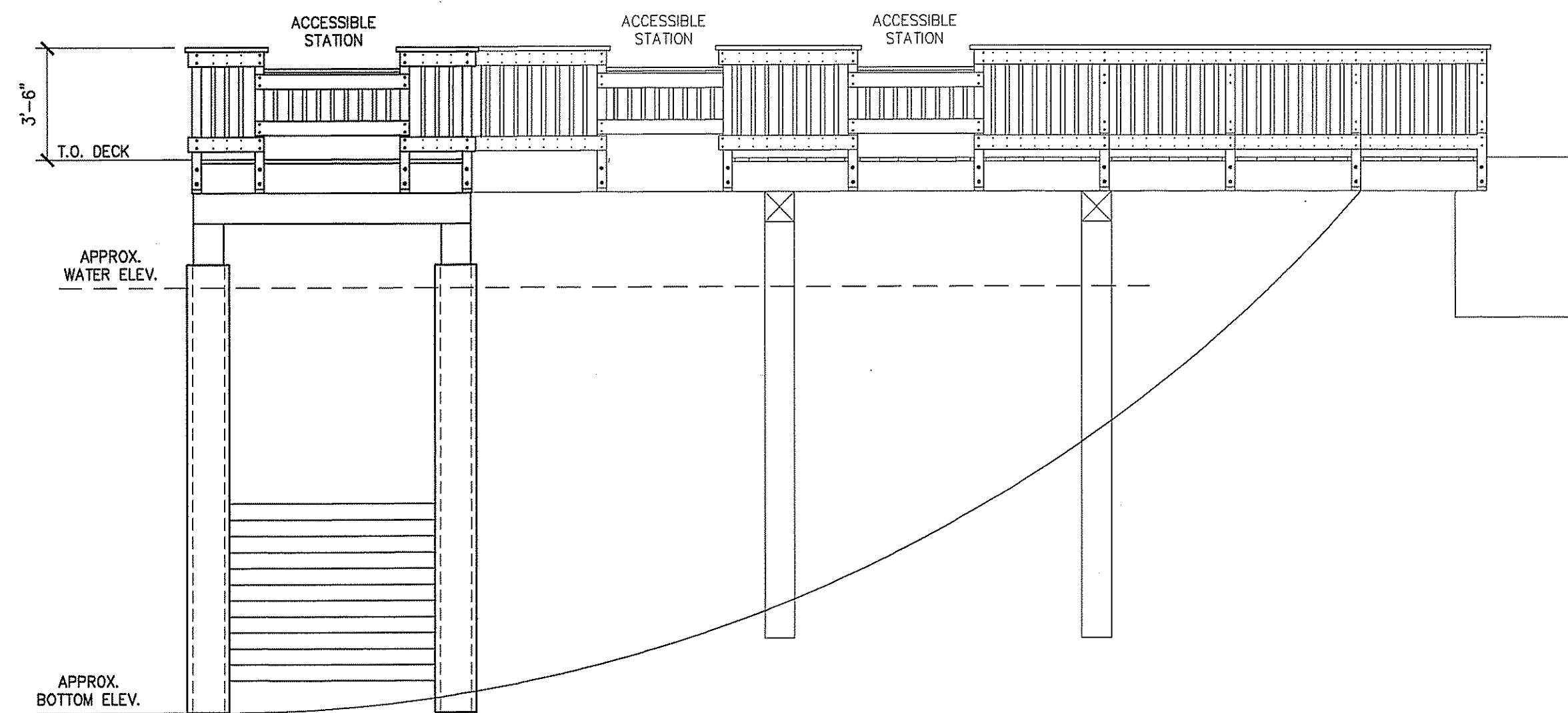
**GENERAL NOTES**

- DECK SHALL BE CONSTRUCTED ACCORDING TO REQUIREMENTS OF THE 2013 RHODE ISLAND BUILDING CODE.
- ALL FRAMING LUMBER SHALL BE NO. 1 SOUTHERN PINE DRY USE PRESSURE TREATED.
- ALL SCREWS, BOLTS, AND NAILS SHALL BE HOT-DIPPED GALVANIZED OR STAINLESS STEEL.
- ALL HARDWARE (JOIST HANGERS, CAST-IN-PLACE POST ANCHORS, ETC.) SHALL BE GALVANIZED OR SHALL BE STAINLESS STEEL.
- CUT ENDS OF POSTS SHALL BE FIELD TREATED WITH AN APPROVED PRESERVATIVE SUCH AS COPPER NAPHTHENATE.
- GUARDS ARE REQUIRED AT ALL AREAS WHERE THE DECK FLOOR IS GREATER THAN 30" ABOVE GRADE AT ANY POINT.
- GUARD POST SPACING SHALL NOT EXCEED 4'-0".
- LIVE LOAD DEFLECTION: JOISTS & BEAMS = L/360  
GUARDS = L/240
- DESIGN LOADS: FLOOR LIVE LOAD = 100 P.S.F.  
DEAD LOAD = 10 P.S.F.
- GUARDS SHALL BE DESIGNED FOR A 200 LB. CONCENTRATED LOAD PLACED ALONG THE TOP RAIL IN ANY DIRECTION, AT ANY POINT.

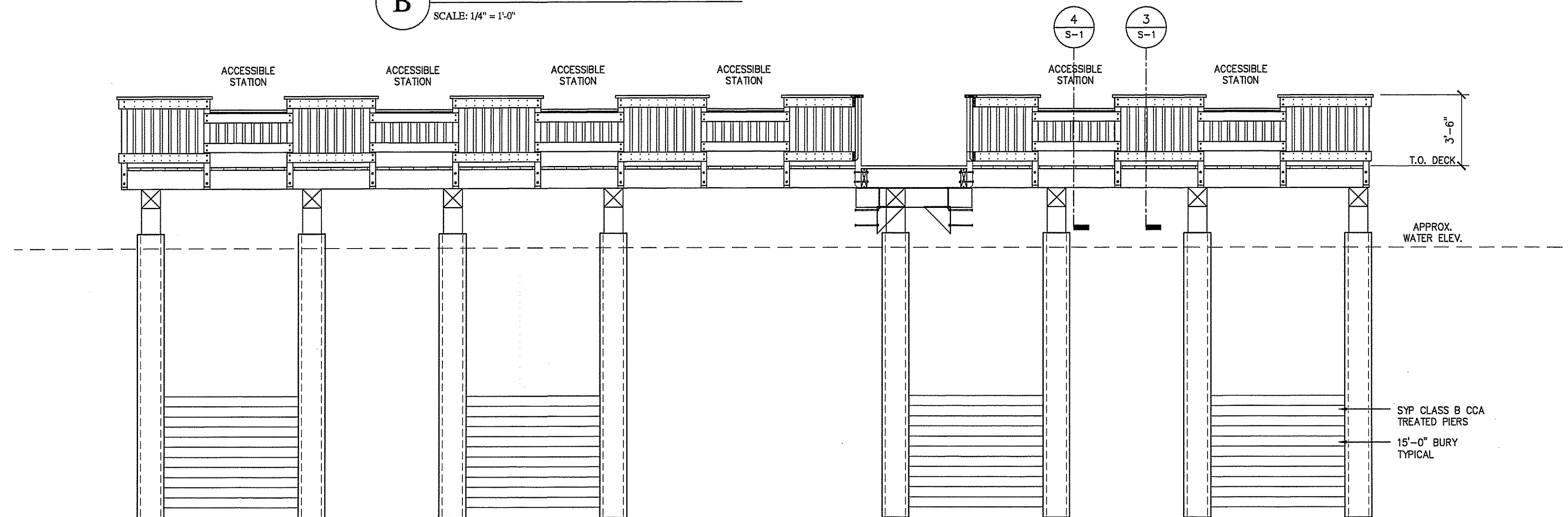
DEPARTMENT OF ENVIRONMENTAL MANAGEMENT  
 OFFICE OF WATER RESOURCES  
 FRESHWATER WETLANDS PROGRAM  
 APPROVED WITH CONDITIONS  
 AS SPECIFIED IN THE LETTER OF APPROVAL  
 DATED **OCT 25 2016** FILE # **15-0257**  
 NO CHANGES ALLOWED WITHOUT PRIOR APPROVAL  
 APPROVED PLANS MUST BE AT CONSTRUCTION SITE



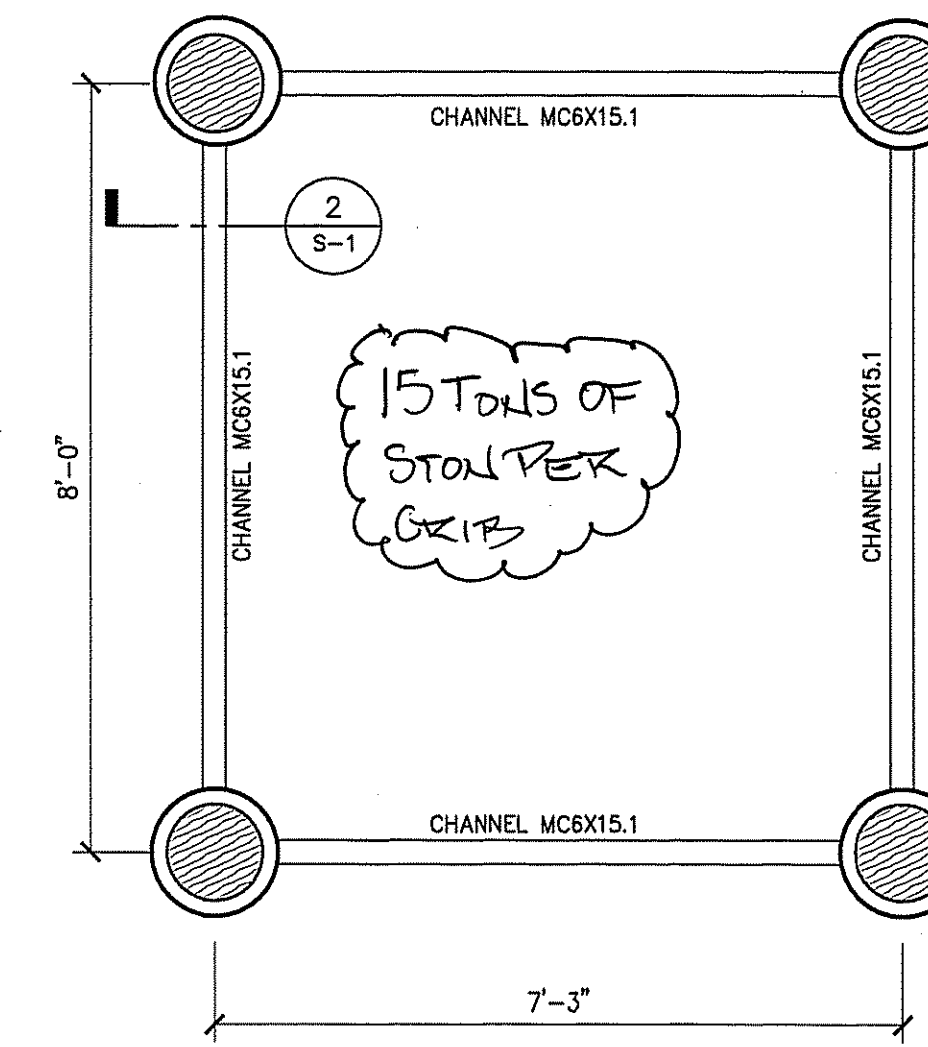
**A** ELEVATION  
SCALE: 1/4" = 1'-0"



**B** ELEVATION  
SCALE: 1/4" = 1'-0"

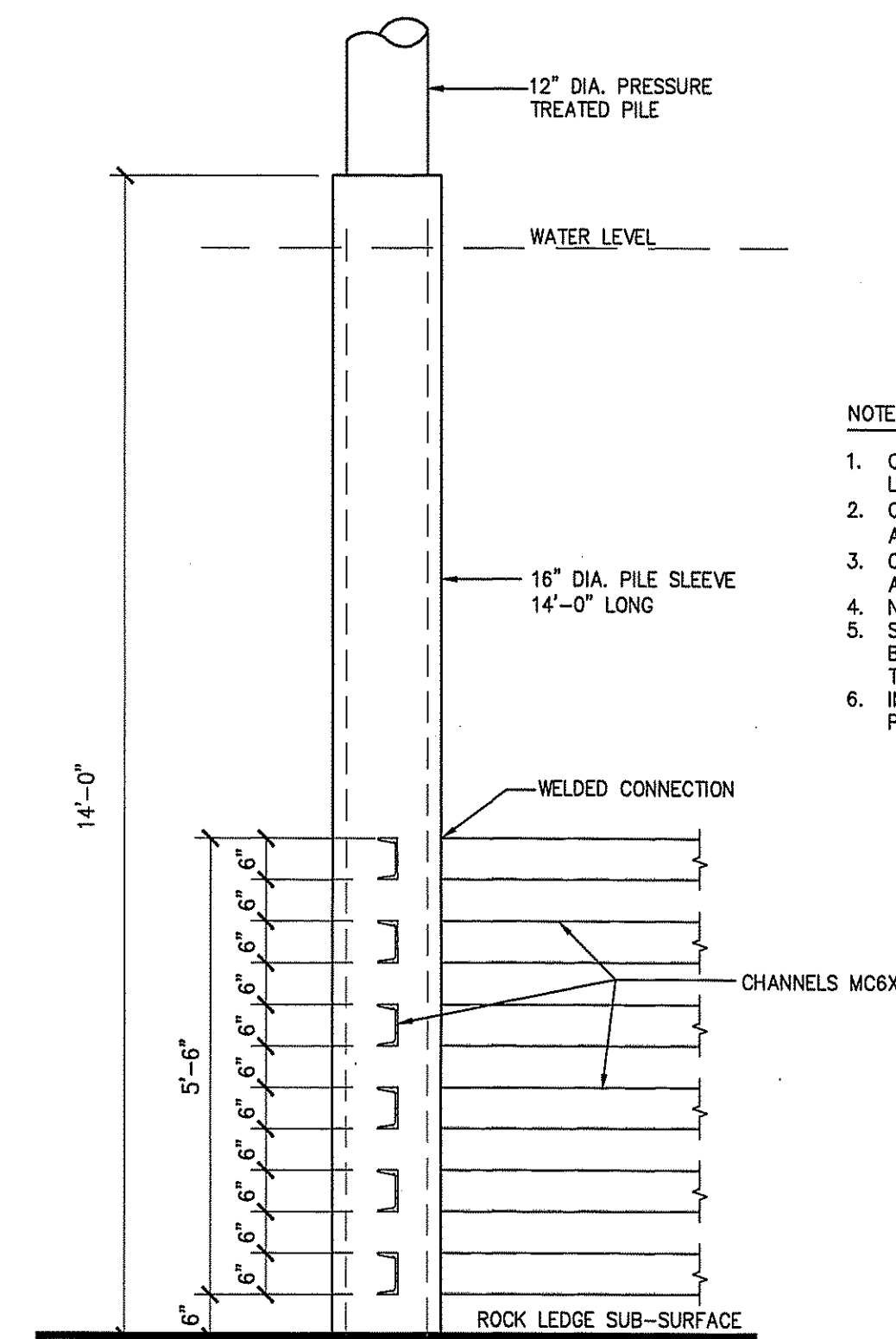


**C** ELEVATION  
SCALE: 1/4" = 1'-0"



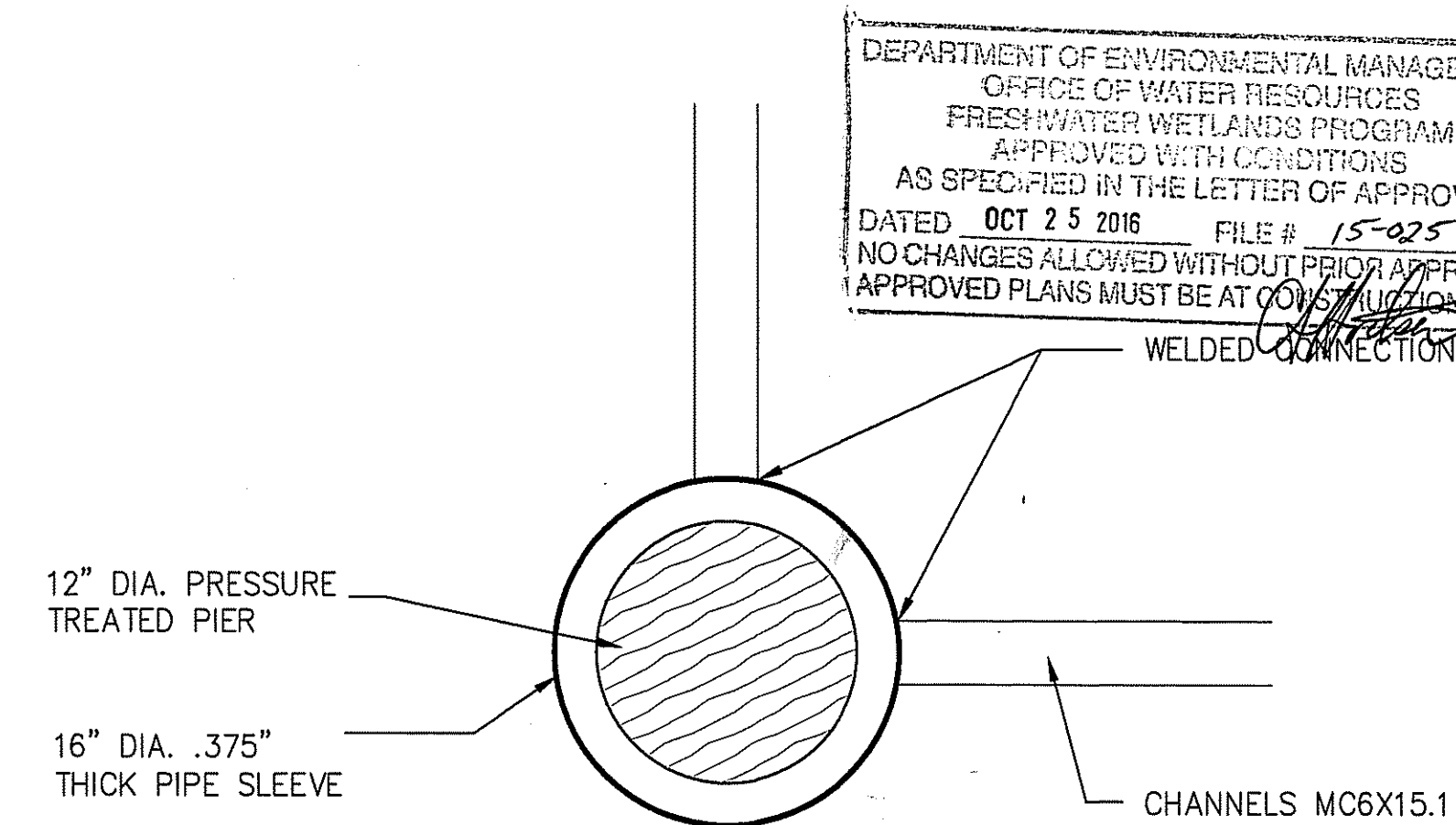
**1** PIER CRIB DETAIL  
SCALE: 1/2" = 1'-0"

Environmental Management  
SEP 30 2016  
Office of Water Resources



**2** PIER CRIB DETAIL  
SCALE: 1/2" = 1'-0"

- NOTES:
- CRIB TO REST AT OR NEAR ROCK LEDGE SUBSURFACE.
  - CAGE 6" CHANNEL, 6" SPACE ALTERNATE W/ 8-12" TRAP ROCK
  - CAGE HEIGHT MIN. 8'-0" TO BE ABOVE BOTTOM ELEVATION
  - NO BOTTOM ON CAGE
  - SQUARE DIMENSIONS OF CRIB TO BE VERIFIED IN THE FIELD PRIOR TO WELDING ASSEMBLY.
  - INSTALL TIMBER PILINGS INSIDE PIPE.



**3** CORNER MC CONNECTION  
SCALE: 1" = 1'-0"

DEPARTMENT OF ENVIRONMENTAL MANAGEMENT  
OFFICE OF WATER RESOURCES  
FRESHWATER WETLANDS PROGRAM  
APPROVED WITH CONDITIONS  
AS SPECIFIED IN THE LETTER OF APPROVAL  
DATED OCT 25 2016 FILE # 15-0251  
NO CHANGES ALLOWED WITHOUT PRIOR APPROVAL  
APPROVED PLANS MUST BE AT CONSTRUCTION SITE

NO	DATE	REVISIONS
1	9-23-16	ADDED CRIBBING

GENERAL NOTES  
ALL CONSTRUCTION SHALL CONFORM TO ALL CODES AND REGULATIONS HAVING JURISDICTION OVER THE PROJECT INCLUDING BUT NOT LIMITED TO THE RHODE ISLAND STATE BUILDING CODE REGULATION SBC-1-2013 ICC/ANSI A117.3, THE AMERICANS WITH DISABILITIES ACT AND THE RHODE ISLAND LIFE SAFETY CODE.

2. IT IS THE RESPONSIBILITY OF THE CONTRACTOR TO INSURE COMPLIANCE WITH SAID CODES AND MODIFY THE SPECIFICATIONS AS NEEDED TO COMPLY WITH SUCH CODES.

3. DESIGNER OF THESE PLANS SHALL NOT BE HELD LIABLE FOR ANY DEVIATION AND/OR MODIFICATIONS TO DRAWINGS BY THE OWNERS AND/OR THE CONTRACTOR AND SUB-CONTRACTORS.

ENGINEER  
STEVEN A. BOGLE, PE d/b/a  
**SAB**  
ENGINEERING  
47 MOHILL AVENUE  
SWANSEA, MASSACHUSETTS  
(508) 672-3875

STEVEN A. BOGLE  
No. 5817  
REGISTERED PROFESSIONAL ENGINEER  
CIVIL  
STRUCTURAL

DATE: AUGUST 19, 2016  
PROJECT NO.: 2016-42  
DRAWN BY: J.C.  
SCALE: AS NOTED  
CHECKED BY: S.A.B.

PROJECT:  
PAWTUXET RIVER PIER  
WEST WARWICK, RI

CONTRACTOR:  
**DAR**  
CONSTRUCTION SERVICES  
P.O. BOX 857  
REHOBOTH, MA 02769  
(508) 380-1337

JCAD  
Drafting Service  
100 MAYFLOWER DRIVE - SEEKONK, MA 02771  
TEL-508-336-7147 - FAX-508-336-9105

TITLE  
ELEVATIONS

SHEET NO.  
**S-2**

NO	DATE	REVISIONS
1	9-23-16	ADDED CRIBBING

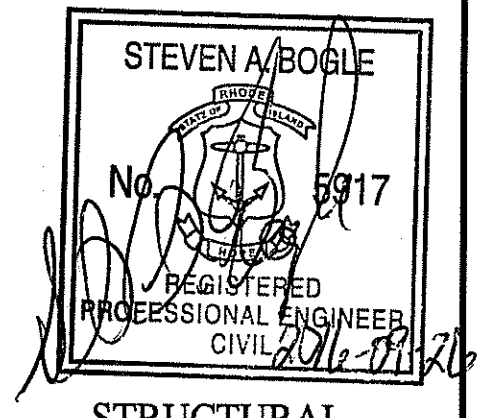
GENERAL NOTES  
 ALL CONSTRUCTION SHALL CONFORM TO ALL CODES AND REGULATIONS HAVING JURISDICTION OVER THE PROJECT INCLUDING BUT NOT LIMITED TO THE RHODE ISLAND STATE BUILDING CODE REGULATION SBC-1-2013 ICC/ANSI A117.3, THE AMERICANS WITH DISABILITIES ACT AND THE RHODE ISLAND LIFE SAFETY CODE.

2. IT IS THE RESPONSIBILITY OF THE CONTRACTOR TO INSURE COMPLIANCE WITH SAID CODES AND MODIFY THE SPECIFICATIONS AS NEEDED TO COMPLY WITH SUCH CODES.

3. DESIGNER OF THESE PLANS SHALL NOT BE HELD LIABLE FOR ANY DEVIATION AND/OR MODIFICATIONS TO DRAWINGS BY THE OWNERS AND/OR THE CONTRACTOR AND SUB-CONTRACTORS.

ENGINEER  
 STEVEN A. BOGLE, PE d/b/a

**SAB**  
 ENGINEERING  
 47 MOHILL AVENUE  
 SWANSEA, MASSACHUSETTS  
 (508) 672-3875

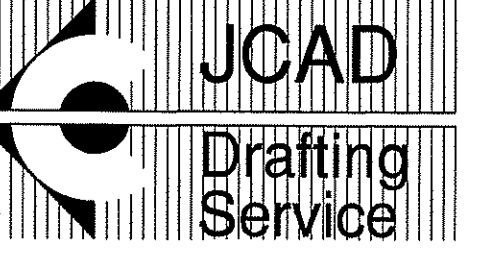


STRUCTURAL

DATE: AUGUST 19, 2016  
 PROJECT NO.: 2016-42  
 DRAWN BY: J.C.  
 SCALE: AS NOTED  
 CHECKED BY: S.A.B.

PROJECT:  
 PAWTUXET RIVER PIER  
 WEST WARWICK, RI

CONTRACTOR:  
**DAR**  
 CONSTRUCTION  
 SERVICES  
 P.O. BOX 857  
 REHOBOTH, MA 02769  
 (508) 380-1337

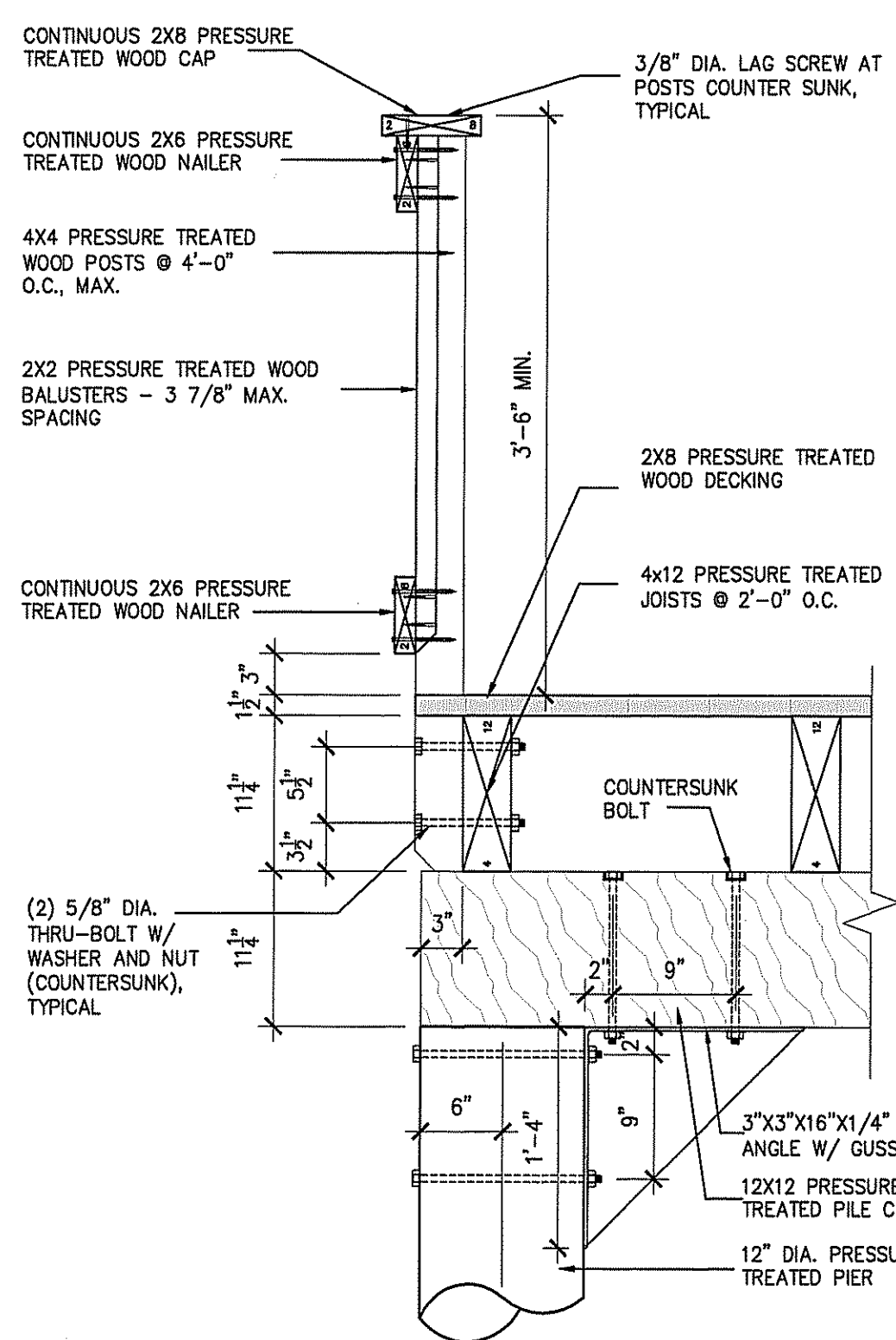
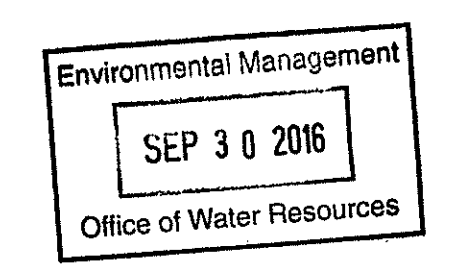


100 MAYFLOWER DRIVE • SEEKONK, MA 02771  
 TEL: 508-336-7147 • FAX: 508-336-9105

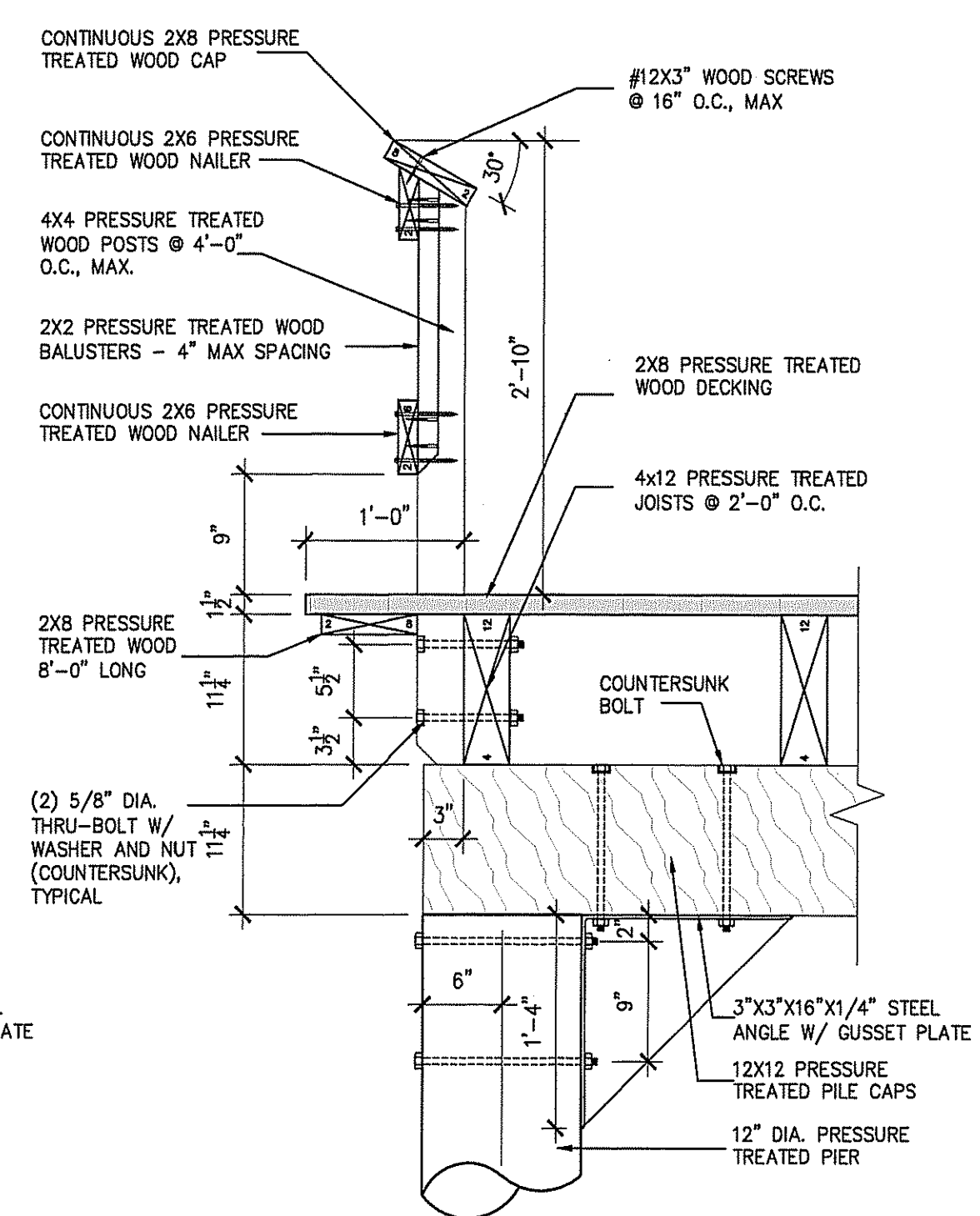
TITLE  
 DETAILS

SHEET NO.

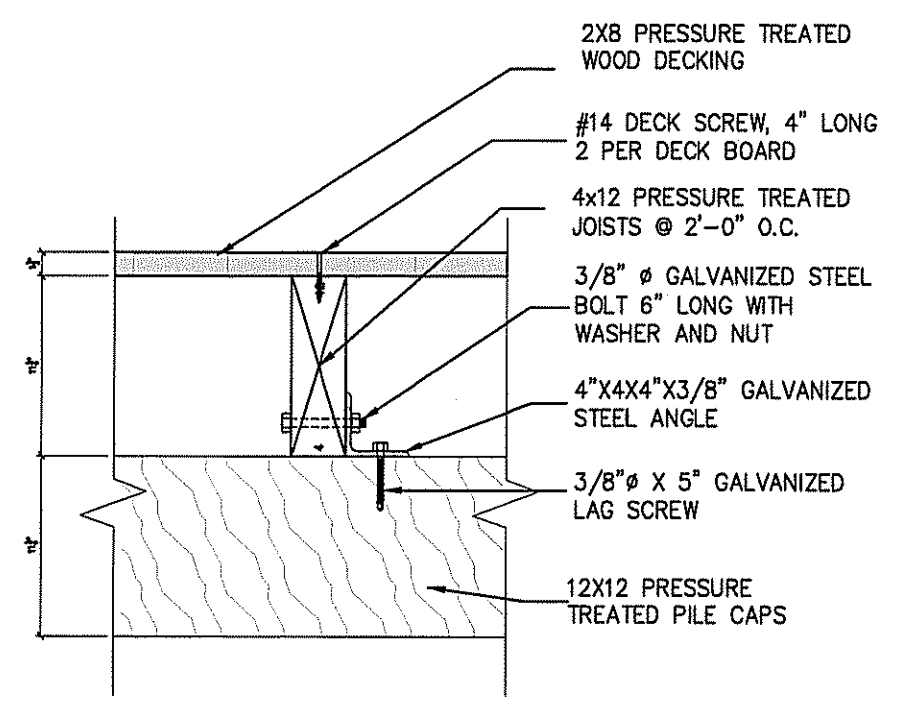
**S-3**



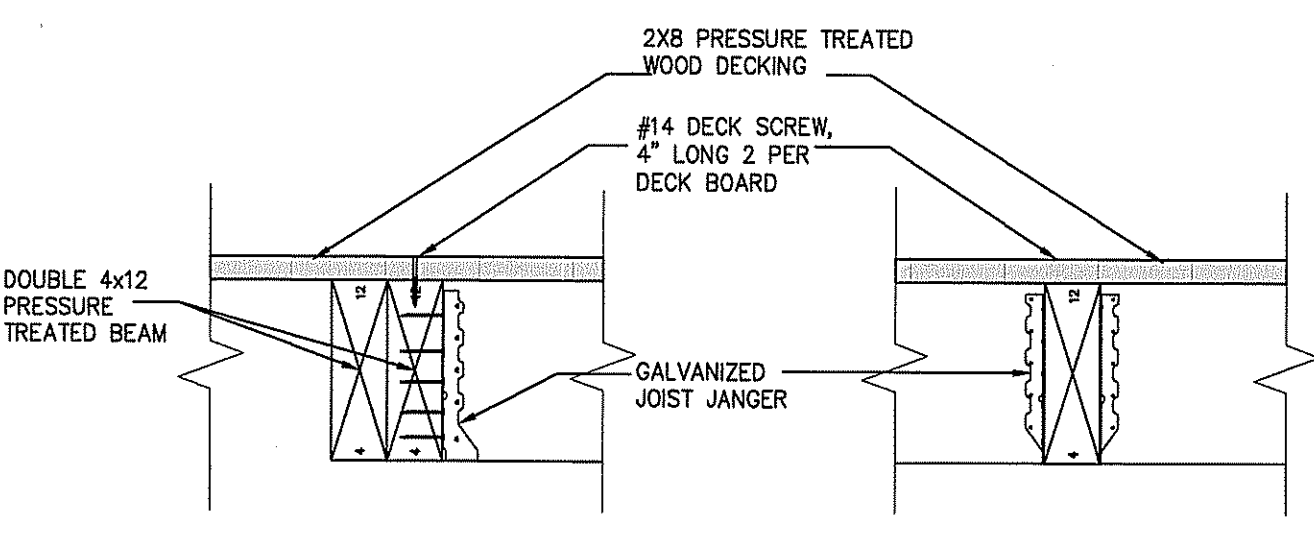
**3** DETAIL @ TYPICAL RAILING  
 SCALE: 1" = 1'-0"



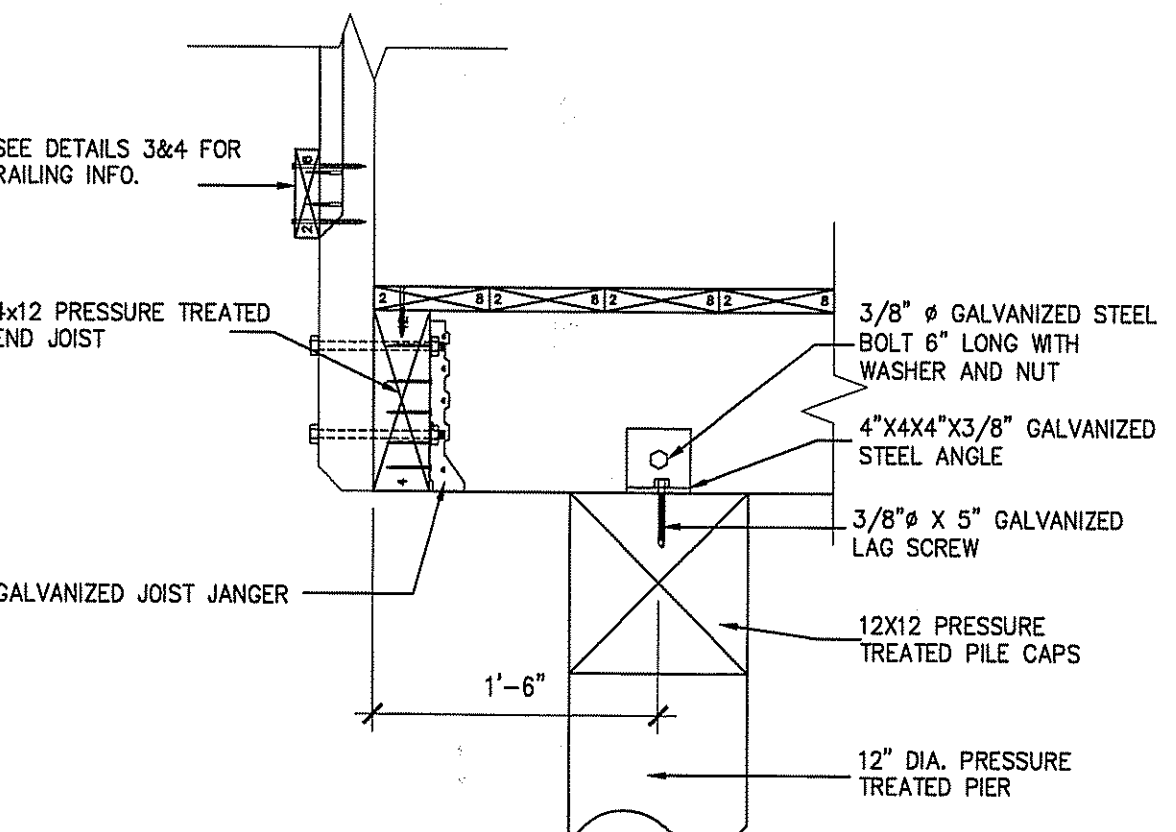
**4** DETAIL @ ACCESSIBLE FISHING STATION  
 SCALE: 1" = 1'-0"



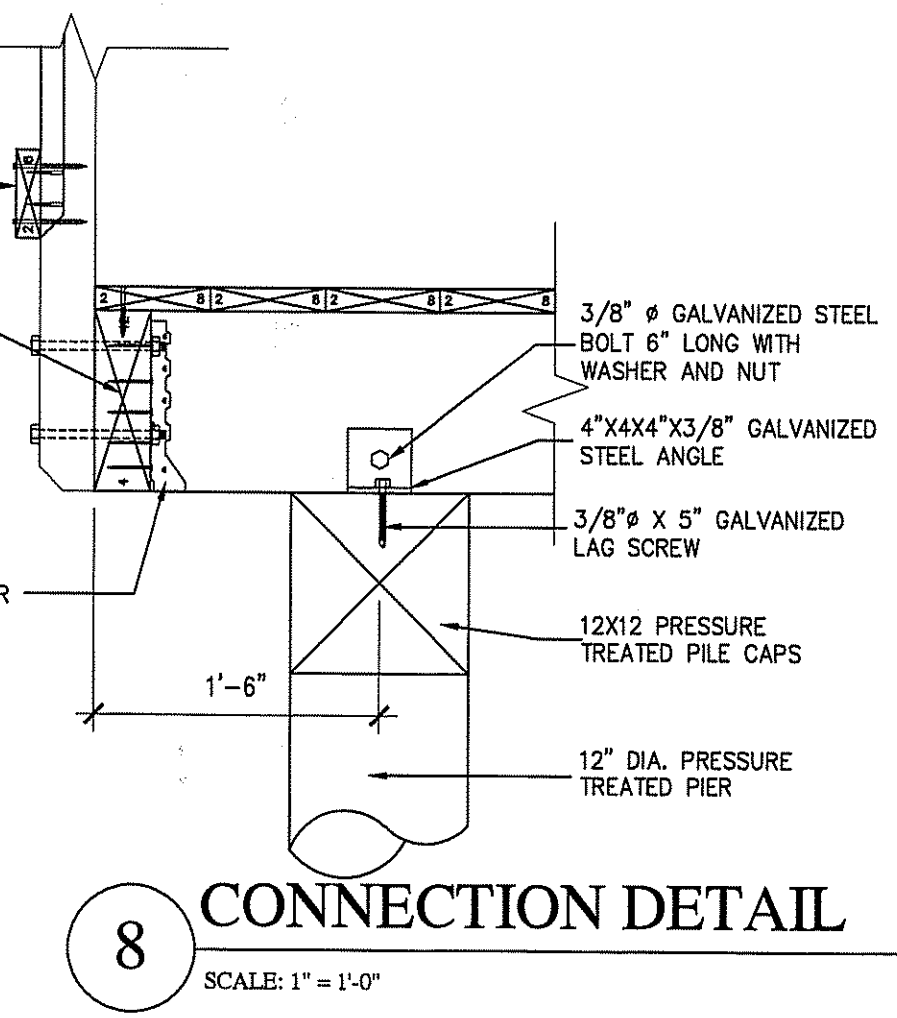
**5** CONNECTION DETAIL  
 SCALE: 1" = 1'-0"



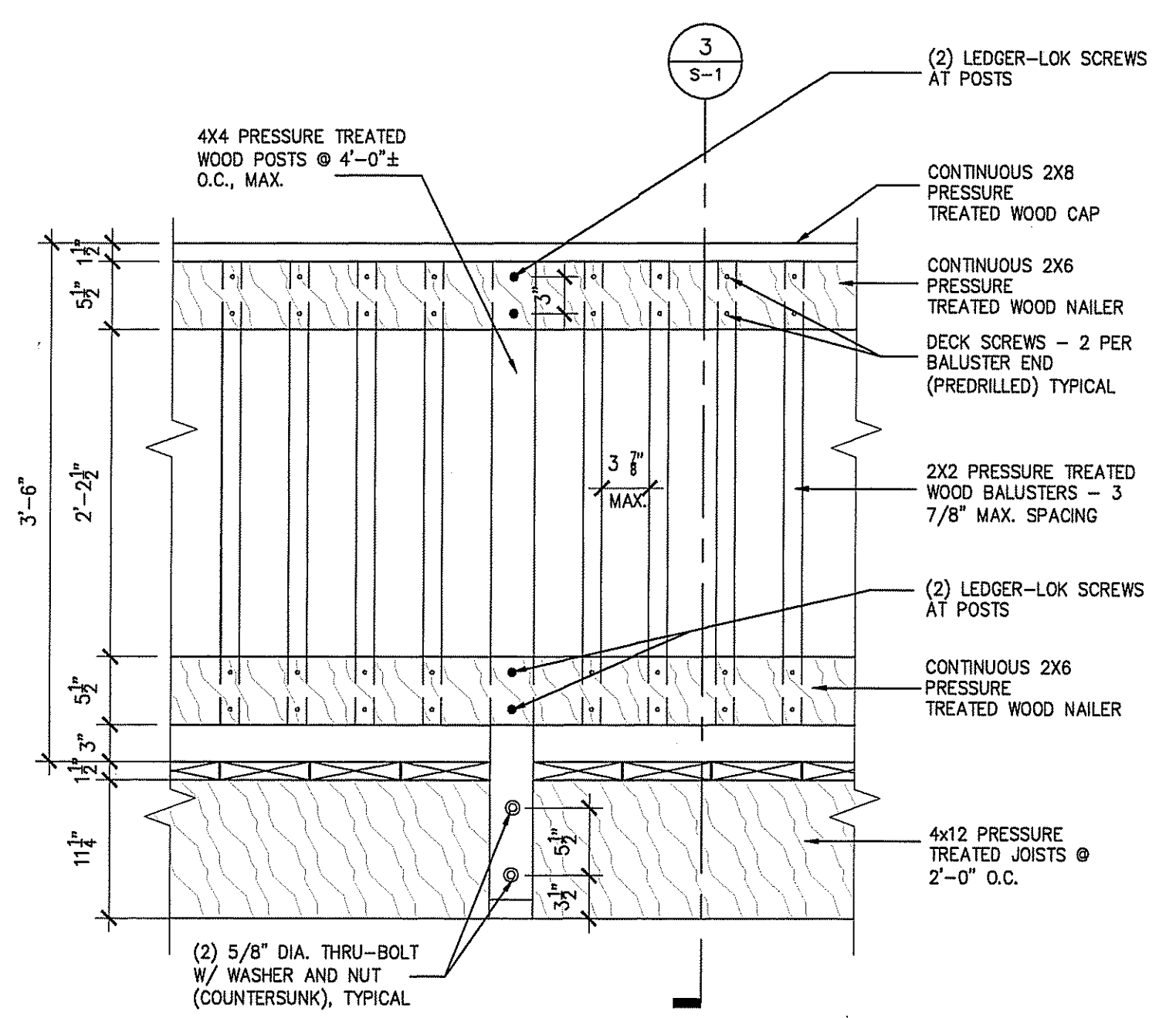
**6** CONNECTION DETAIL  
 SCALE: 1" = 1'-0"



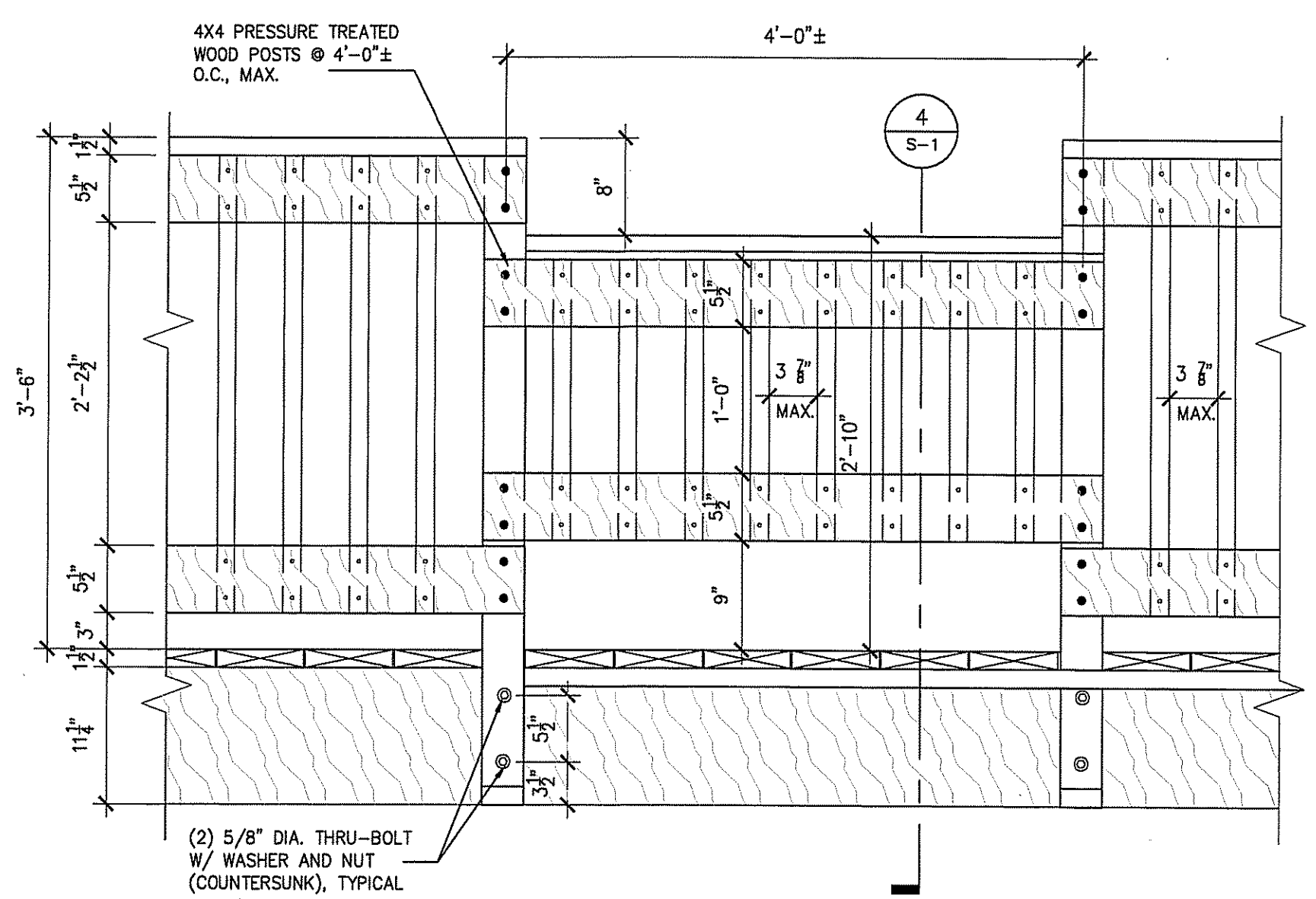
**7** CONNECTION DETAIL  
 SCALE: 1" = 1'-0"



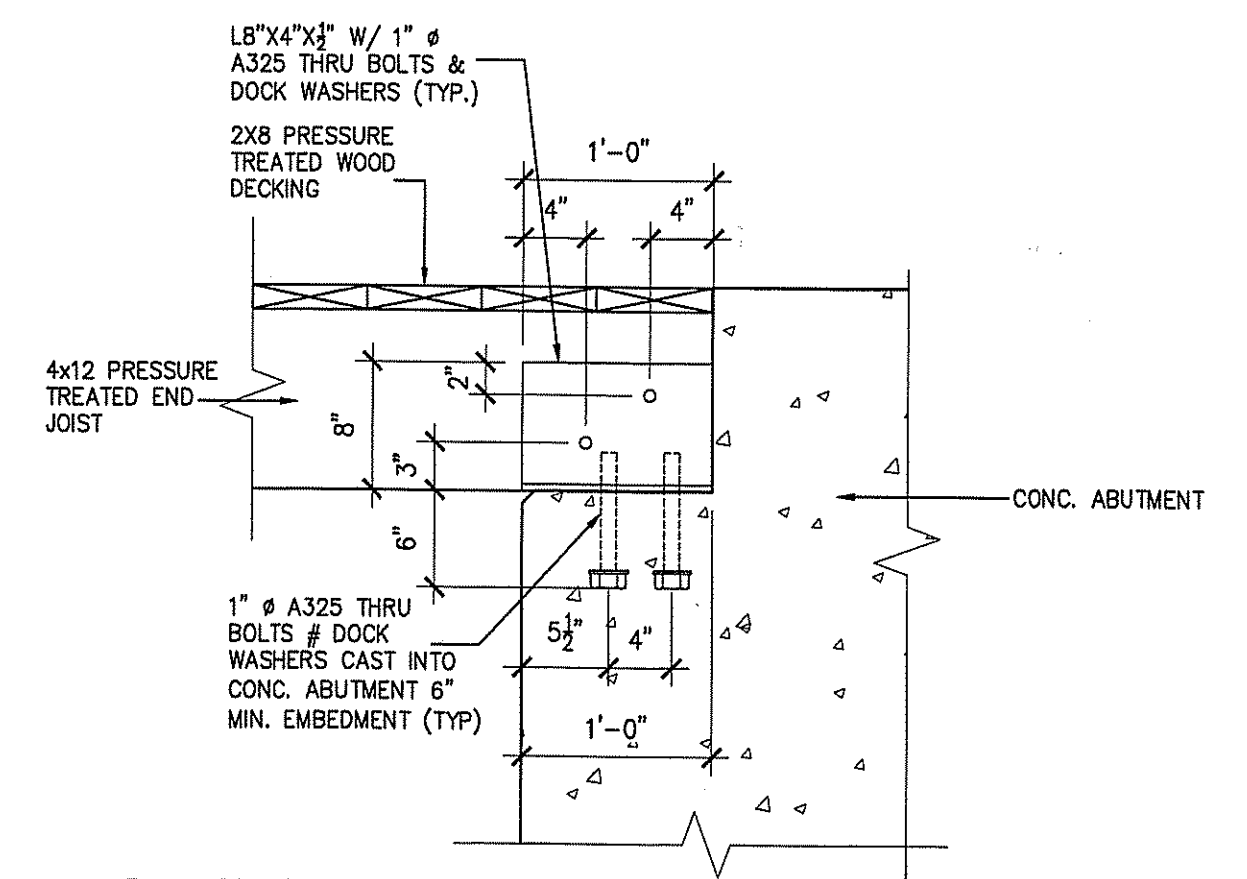
**8** CONNECTION DETAIL  
 SCALE: 1" = 1'-0"



**1** DETAIL @ TYPICAL RAILING  
 SCALE: 1" = 1'-0"

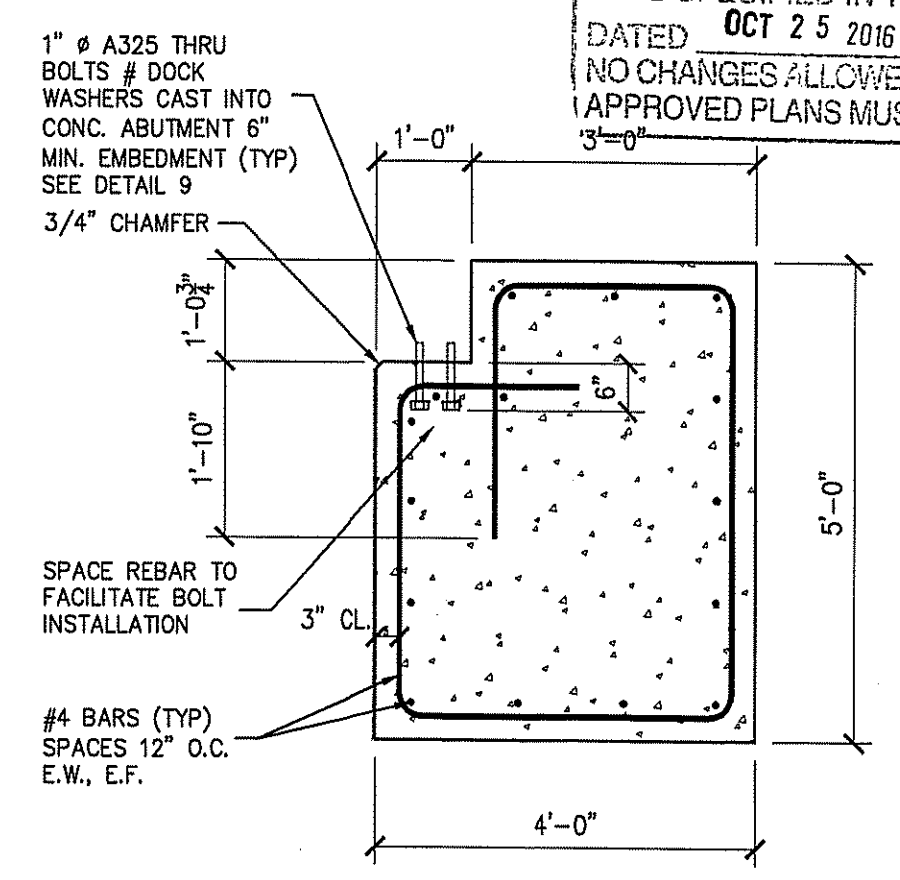


**2** DETAIL @ ACCESSIBLE FISHING STATION  
 SCALE: 1" = 1'-0"



**9** CONNECTION DETAIL  
 SCALE: 1" = 1'-0"

DEPARTMENT OF ENVIRONMENTAL MANAGEMENT  
 OFFICE OF WATER RESOURCES  
 FRESHWATER WETLANDS PROGRAM  
 APPROVED WITH CONDITIONS  
 AS SPECIFIED IN THE LETTER OF APPROVAL  
 DATED **OCT 25 2016** FILE # **15-0251**  
 NO CHANGES ALLOWED WITHOUT PRIOR APPROVAL  
 APPROVED PLANS MUST BE AT CONSTRUCTION SITE



**10** CONC. ABUTMENT  
 SCALE: 1/2" = 1'-0"