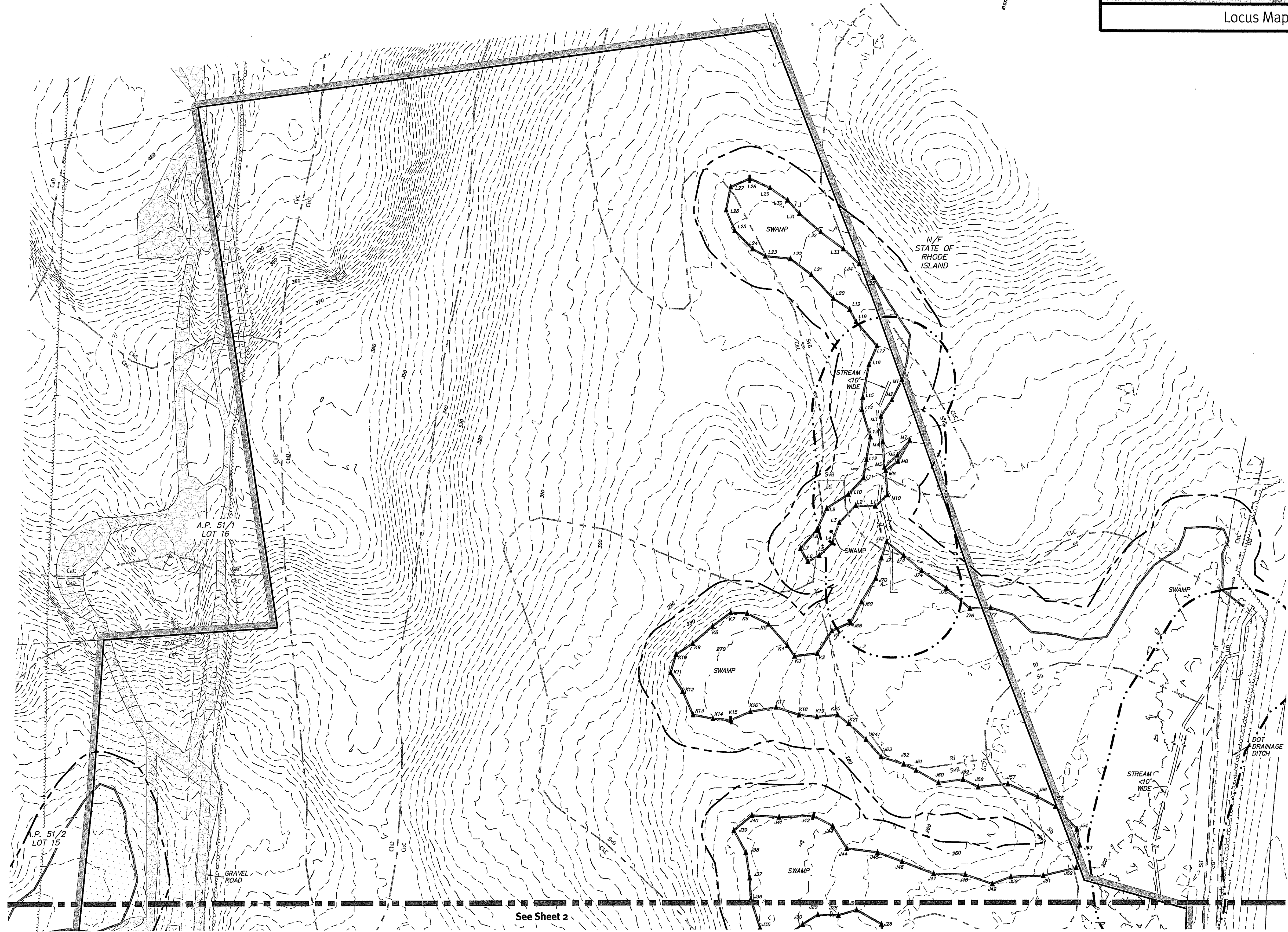


Diprete Engineering
 Two Stafford Court, Cranston, RI 02920
 Tel: 401-943-1000 Fax: 401-943-6006 www.diprete-eng.com
Boston • Providence • Newport

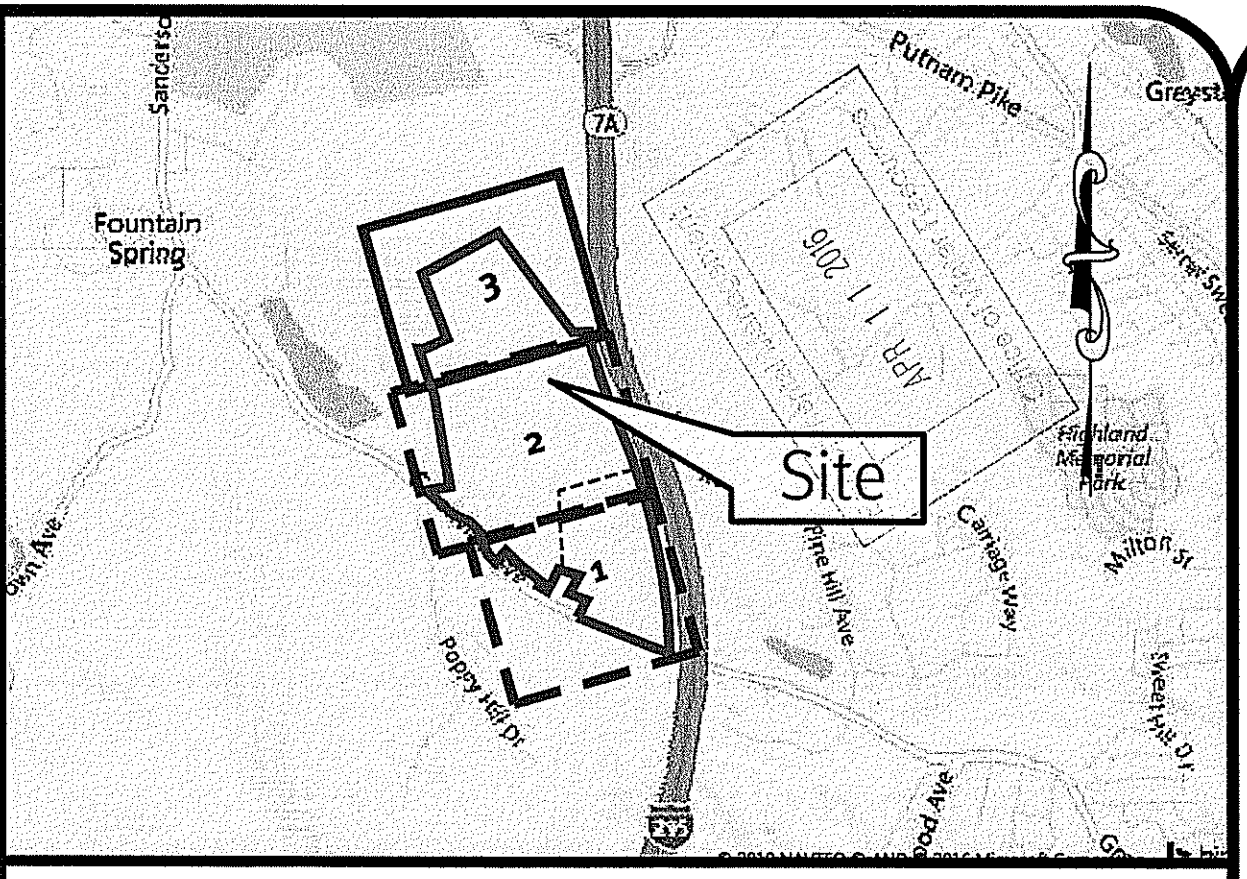
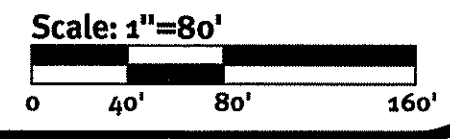
BRIAN C. GIROUX
 0341
 REGISTERED PROFESSIONAL ENGINEER CIVIL

No.	Date	Description	D.I.C.
1	02/20/16	Wetland Edge Verification	By: [Signature]
2		Drawn By: D.I.C.	

Wetland Edge Verification
Citizens Bank Campus
 Owner: AP 50 Lot 71
 Johnston, Rhode Island
DAC Properties LLC
 Owner: AP 51/1 Lot 17
 Johnston, Rhode Island
Greater Rhode Island Baptist Temple
 110 Dorrance Street, Suite 200
 Providence, Rhode Island 02903
 DE Job No: 2387-001 Copyright 2016 by Diprete Engineering Associates, Inc.



See Sheet 2



Locus Map Scale: 1" = 2000'

BRIAN C. GIROUX

 REGISTERED PROFESSIONAL ENGINEER
 CIVIL

Wetland Edge Verification
Citizens Bank Campus
 Johnston, Rhode Island
 Owner: A.P. 50, 0377
Greater Rhode Island Baptist Temple
 DAC Properties LLC
 110 Dorrance Street, Suite 20
 Providence, Rhode Island 02903
 Johnston, Rhode Island 02919
 DE Job No: 2567-001. Copyright 2016 by DiPrete Engineering Associates, Inc.

DiPrete Engineering
 Two Stafford Court Cranston, RI 02920
 tel: 401-949-1000 fax: 401-949-6006 www.diprete-eng.com
 Boston • Providence • Newport

No.	Date	Description	D.T.C.	By
0	4/22/2016	Wetland Edge Verification		

Drawn By: D.T.C.