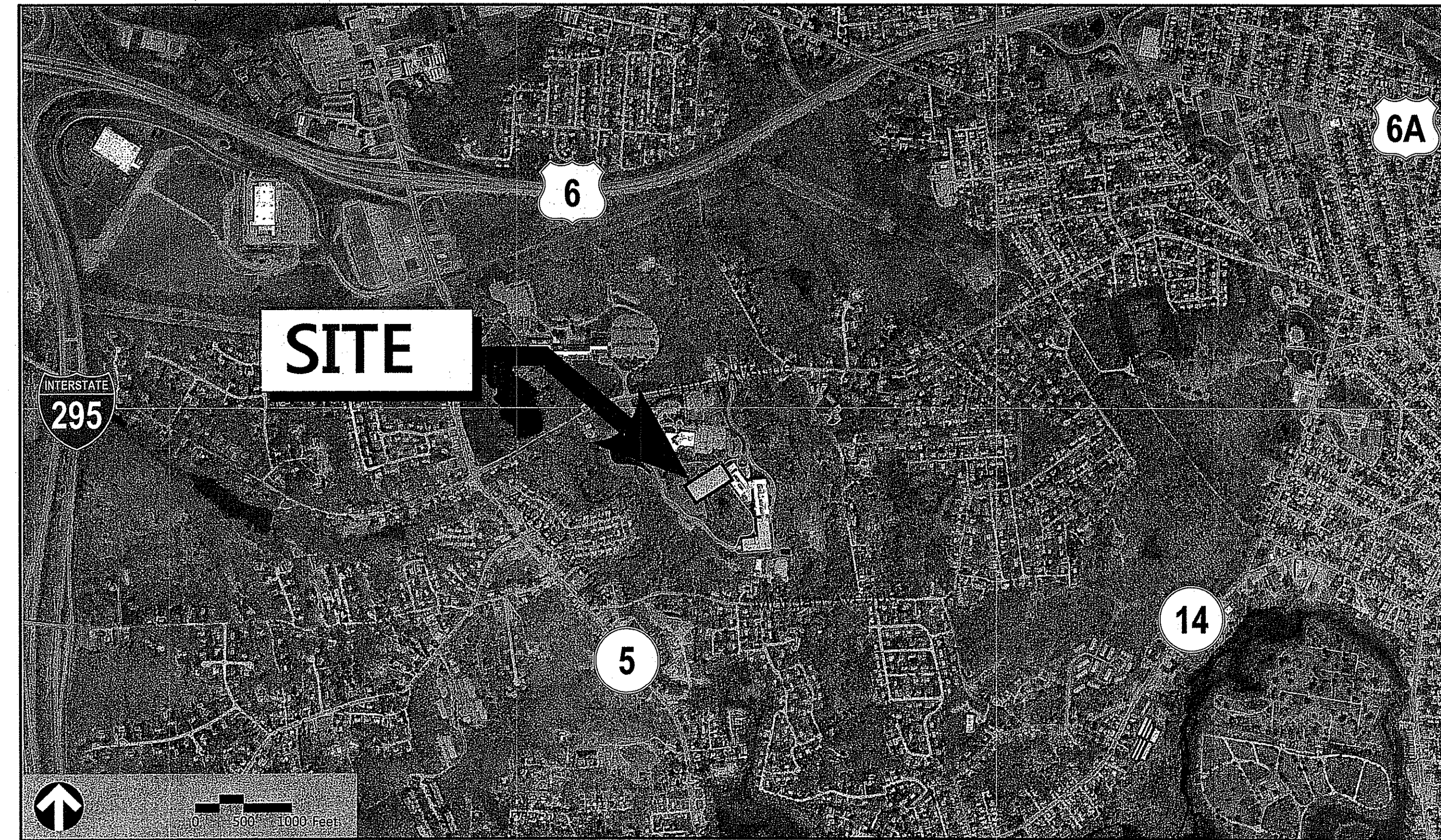


Site Plans

Issued for RIDEM
 Date Issued April 1, 2016
 Latest Issue April 1, 2016

FM Global Pedestrian Bridge

270 Central Avenue
 Johnston, Rhode Island



1 Cedar Street
 Suite 400
 Providence, RI 02903
 401.272.8100

Geotechnical Engineers
 GZA GeoEnvironmental, Inc.
 530 Broadway
 Providence, RI 02909
 401-421-4140

DEPARTMENT OF ENVIRONMENTAL MANAGEMENT
 OFFICE OF WATER RESOURCES
 FRESHWATER WETLANDS PROGRAM
 APPROVED WITH CONDITIONS
 AS SPECIFIED IN THE LETTER OF APPROVAL
 DATED OCT 05 2015 FILE # 16-0093
 NO CHANGES ALLOWED WITHOUT PRIOR APPROVAL
 APPROVED PLANS MUST BE AT CONSTRUCTION SITE

Environmental Management
 JUL 15 2015
 Office of Water Resources

JONATHAN B. STABACH
 No. 7794
 REGISTERED
 PROFESSIONAL ENGINEER
 (CIVIL) 4/1/16

Sheet Index

No.	Drawing Title	Latest Issue
C-1	Legend And General Notes	April 1, 2016
C-2	Layout, Materials, Grading, and Utility Plan	April 1, 2016
C-3	Site Details	April 1, 2016
SESC-1	Soil Erosion and Sediment Control Plan	April 1, 2016
S-1	General Notes	April 1, 2016
S-2	General Plan, Longitudinal Section & Foundation Plan	April 1, 2016
S-3	Abutment Plan, Elevation & Details	April 1, 2016
S-4	Typical Bridge Sections & Details 1	April 1, 2016
S-5	Typical Bridge Sections & Details 2	April 1, 2016

Reference Drawings

No.	Drawing Title	Latest Issue
R-1	200' Radius Map	April 1, 2016
Sv-1	Existing Conditions Plan	November 24, 2015

Owner/Applicant

Hobbs Brook Management LLC
 C/O FM Global
 270 Central Avenue
 Johnston, RI 02919

Assessor's Map: 24/1
Lot: 22

PLAN FOR NOTICE

\\VHB\PROJ\PROVIDENCE\72614.00\CAD\LD\PLANS\72614_COV_1_April_2016

VHB Project: 72614.00 FM Global Pedestrian Bridge
 Issued for: RIDEM PDA 4/1/2016



1 Cedar Street
Suite 400
Providence, RI 02903
401.272.8100

Legend

Exist.	Prop.	Exist.	Prop.	
---	---	---	---	CONCRETE
---	---	---	---	HEAVY DUTY PAVEMENT
---	---	---	---	RIPRAP
---	---	---	---	CONSTRUCTION ENTRANCE
---	---	27.35 TC x	27.35 TC x	TOP OF CURB ELEVATION
10+00	10+00	26.85 BC x	26.85 BC x	BOTTOM OF CURB ELEVATION
---	---	132.75 x	132.75 x	SPOT ELEVATION
---	---	45.0 TW x	45.0 TW x	TOP & BOTTOM OF WALL ELEVATION
---	---	36.5 BW	36.5 BW	BORING LOCATION
---	---	---	---	TEST PIT LOCATION
---	---	MW	MW	MONITORING WELL
---	---	---	---	UNDERDRAIN
---	---	12'D	12'D	DRAIN
---	---	6'RD	6'RD	ROOF DRAIN
---	---	12'S	12'S	SEWER
---	---	FM	FM	FORCE MAIN
---	---	OHW	OHW	OVERHEAD WIRE
---	---	6"W	6"W	WATER
---	---	4"FP	4"FP	FIRE PROTECTION
---	---	2"DW	2"DW	DOMESTIC WATER
---	---	3"C	3"C	GAS
---	---	E	E	ELECTRIC
---	---	STM	STM	STEAM
---	---	T	T	TELEPHONE
---	---	FA	FA	FIRE ALARM
---	---	CATV	CATV	CABLE TV
---	---	---	---	CATCH BASIN
---	---	---	---	DOUBLE CATCH BASIN
---	---	---	---	GUTTER INLET
---	---	---	---	DRAIN MANHOLE
---	---	---	---	TRENCH DRAIN
---	---	---	---	PLUG OR CAP
---	---	---	---	CLEANOUT
---	---	---	---	FLARED END SECTION
---	---	---	---	HEADWALL
---	---	---	---	SEWER MANHOLE
---	---	---	---	CURB STOP & BOX
---	---	---	---	WATER VALVE & BOX
---	---	---	---	TAPPING SLEEVE, VALVE & BOX
---	---	---	---	SIAMESE CONNECTION
---	---	---	---	FIRE HYDRANT
---	---	---	---	WATER METER
---	---	---	---	POST INDICATOR VALVE
---	---	---	---	WATER WELL
---	---	---	---	GAS GATE
---	---	---	---	GAS METER
---	---	---	---	ELECTRIC MANHOLE
---	---	---	---	ELECTRIC METER
---	---	---	---	LIGHT POLE
---	---	---	---	TELEPHONE MANHOLE
---	---	---	---	TRANSFORMER PAD
---	---	---	---	UTILITY POLE
---	---	---	---	GUY POLE
---	---	---	---	GUY WIRE & ANCHOR
---	---	---	---	HAND HOLE
---	---	---	---	PULL BOX
---	---	---	---	MATCHLINE
---	---	---	---	MATCHLINE
---	---	---	---	MINOR CONTOUR
---	---	---	---	MAJOR CONTOUR
---	---	---	---	PARKING COUNT
---	---	---	---	COMPACT PARKING STALLS
---	---	---	---	DOUBLE YELLOW LINE
---	---	---	---	STOP LINE
---	---	---	---	CROSSWALK
---	---	---	---	ACCESSIBLE CURB RAMP
---	---	---	---	ACCESSIBLE PARKING
---	---	---	---	VAN-ACCESSIBLE PARKING

Abbreviations

General	
ABAN	ABANDON
ACR	ACCESSIBLE CURB RAMP
ADJ	ADJUST
APPROX	APPROXIMATE
BIT	BITUMINOUS
BS	BOTTOM OF SLOPE
BWLL	BROKEN WHITE LANE LINE
CONC	CONCRETE
DYCL	DOUBLE YELLOW CENTER LINE
EL	ELEVATION
ELEV	ELEVATION
EXIST	EXISTING
FDN	FOUNDATION
FFE	FIRST FLOOR ELEVATION
GRAN	GRANITE
GTD	GRADE TO DRAIN
LA	LANDSCAPE AREA
LOD	LIMIT OF DISTURBANCE
MAX	MAXIMUM
MIN	MINIMUM
NIC	NOT IN CONTRACT
NTS	NOT TO SCALE
PERF	PERFORATED
PROP	PROPOSED
REM	REMOVE
RET	RETAIN
R&D	REMOVE AND DISPOSE
R&R	REMOVE AND RESET
R/T	REMOVE TREE, STUMP, AND TREAT WITH HERBACIDE
SWEL	SOLID WHITE EDGE LINE
SWLL	SOLID WHITE LANE LINE
TS	TOP OF SLOPE
TYP	TYPICAL
Utility	
CB	CATCH BASIN
CMP	CORRUGATED METAL PIPE
CO	CLEANOUT
DCB	DOUBLE CATCH BASIN
DMH	DRAIN MANHOLE
CIP	CAST IRON PIPE
COND	CONDUIT
DIP	DUCTILE IRON PIPE
FES	FLARED END SECTION
FM	FORCE MAIN
F&G	FRAME AND GRATE
F&C	FRAME AND COVER
GI	GUTTER INLET
GT	GREASE TRAP
HDPE	HIGH DENSITY POLYETHYLENE PIPE
HH	HANDHOLE
HW	HEADWALL
HYD	HYDRANT
INV	INVERT ELEVATION
I=	INVERT ELEVATION
LP	LIGHT POLE
MES	METAL END SECTION
PWW	PAVED WATER WAY
PVC	POLYVINYLCHLORIDE PIPE
PIV	POST INDICATOR VALVE
RCP	REINFORCED CONCRETE PIPE
R=	RIM ELEVATION
SMH	SEWER MANHOLE
TSV	TAPPING SLEEVE, VALVE AND BOX
UG	UNDERGROUND
UP	UTILITY POLE

Notes:

General

- CONTRACTOR SHALL NOTIFY "DIG-SAFE" (1-888-344-7233) AT LEAST 72 HOURS BEFORE EXCAVATING.
- CONTRACTOR SHALL BE RESPONSIBLE FOR SITE SECURITY AND JOB SAFETY. CONSTRUCTION ACTIVITIES SHALL BE IN ACCORDANCE WITH OSHA STANDARDS AND LOCAL REQUIREMENTS.
- ACCESSIBLE ROUTES, PARKING SPACES, RAMPS, SIDEWALKS AND WALKWAYS SHALL BE CONSTRUCTED IN CONFORMANCE WITH THE FEDERAL AMERICANS WITH DISABILITIES ACT AND WITH STATE AND LOCAL LAWS AND REGULATIONS (WHICHEVER ARE MORE STRINGENT).
- AREAS DISTURBED DURING CONSTRUCTION AND NOT RESTORED WITH IMPERVIOUS SURFACES SHALL RECEIVE 6 INCHES LOAM AND SEED UNLESS OTHERWISE NOTED ON THE PLANS. SEE SOIL EROSION AND SEDIMENT CONTROL PLAN REGARDING SURFACE TREATMENT IN THE WETLANDS.
- WORK WITHIN THE LOCAL RIGHTS-OF-WAY SHALL CONFORM TO LOCAL MUNICIPAL STANDARDS. WORK WITHIN STATE RIGHTS-OF-WAY SHALL CONFORM TO THE LATEST EDITION OF THE STATE HIGHWAY DEPARTMENTS STANDARD SPECIFICATIONS FOR HIGHWAYS AND BRIDGES.
- UPON AWARD OF CONTRACT, CONTRACTOR SHALL MAKE NECESSARY CONSTRUCTION NOTIFICATIONS AND APPLY FOR AND OBTAIN NECESSARY PERMITS, PAY FEES, AND POST BONDS ASSOCIATED WITH THE WORK INDICATED ON THE DRAWINGS, IN THE SPECIFICATIONS, AND IN THE CONTRACT DOCUMENTS. DO NOT CLOSE OR OBSTRUCT ROADWAYS, SIDEWALKS, AND FIRE HYDRANTS, WITHOUT APPROPRIATE PERMITS.
- AREAS OUTSIDE THE LIMITS OF PROPOSED WORK DISTURBED BY THE CONTRACTOR'S OPERATIONS SHALL BE RESTORED BY THE CONTRACTOR TO THEIR ORIGINAL CONDITION AT THE CONTRACTOR'S EXPENSE.
- IN THE EVENT THAT SUSPECTED CONTAMINATED SOIL, GROUNDWATER, AND OTHER MEDIA ARE ENCOUNTERED DURING EXCAVATION AND CONSTRUCTION ACTIVITIES BASED ON VISUAL, OLFACTORY, OR OTHER EVIDENCE, THE CONTRACTOR SHALL STOP WORK IN THE VICINITY OF THE SUSPECTED MATERIAL TO AVOID FURTHER SPREADING OF THE MATERIAL, AND SHALL NOTIFY THE OWNER IMMEDIATELY SO THAT THE APPROPRIATE TESTING AND SUBSEQUENT ACTION CAN BE TAKEN.
- CONTRACTOR SHALL PREVENT DUST, SEDIMENT, AND DEBRIS FROM EXITING THE SITE AND SHALL BE RESPONSIBLE FOR CLEANUP, REPAIRS AND CORRECTIVE ACTION IF SUCH OCCURS.
- DAMAGE RESULTING FROM CONSTRUCTION LOADS SHALL BE REPAIRED BY THE CONTRACTOR AT NO ADDITIONAL COST TO OWNER.
- CONTRACTOR SHALL CONTROL STORMWATER RUNOFF DURING CONSTRUCTION TO PREVENT ADVERSE IMPACTS TO OFF-SITE AREAS, AND SHALL BE RESPONSIBLE TO REPAIR RESULTING DAMAGES, IF ANY, AT NO COST TO OWNER.

Utilities

- THE LOCATIONS, SIZES, AND TYPES OF EXISTING UTILITIES ARE SHOWN AS AN APPROXIMATE REPRESENTATION ONLY. THE OWNER OR ITS REPRESENTATIVE(S) HAVE NOT INDEPENDENTLY VERIFIED THIS INFORMATION AS SHOWN ON THE PLANS. THE UTILITY INFORMATION SHOWN DOES NOT GUARANTEE THE ACTUAL EXISTENCE, SERVICEABILITY, OR OTHER DATA CONCERNING THE UTILITIES, NOR DOES IT GUARANTEE AGAINST THE POSSIBILITY THAT ADDITIONAL UTILITIES MAY BE PRESENT THAT ARE NOT SHOWN ON THE PLANS. PRIOR TO ORDERING MATERIALS AND BEGINNING CONSTRUCTION, THE CONTRACTOR SHALL VERIFY AND DETERMINE THE EXACT LOCATIONS, SIZES, AND ELEVATIONS OF THE POINTS OF CONNECTIONS TO EXISTING UTILITIES AND, SHALL CONFIRM THAT THERE ARE NO INTERFERENCES WITH EXISTING UTILITIES AND THE PROPOSED UTILITY ROUTES, INCLUDING ROUTES WITHIN THE PUBLIC RIGHTS OF WAY.
- WHERE AN EXISTING UTILITY IS FOUND TO CONFLICT WITH THE PROPOSED WORK, OR EXISTING CONDITIONS DIFFER FROM THOSE SHOWN SUCH THAT THE WORK CANNOT BE COMPLETED AS INTENDED, THE LOCATION, ELEVATION, AND SIZE OF THE UTILITY SHALL BE ACCURATELY DETERMINED WITHOUT DELAY BY THE CONTRACTOR, AND THE INFORMATION FURNISHED IN WRITING TO THE OWNER'S REPRESENTATIVE FOR THE RESOLUTION OF THE CONFLICT AND CONTRACTOR'S FAILURE TO NOTIFY PRIOR TO PERFORMING ADDITIONAL WORK RELEASES OWNER FROM OBLIGATIONS FOR ADDITIONAL PAYMENTS WHICH OTHERWISE MAY BE WARRANTED TO RESOLVE THE CONFLICT.
- CONTRACTOR SHALL COORDINATE WITH ELECTRICAL CONTRACTOR AND SHALL FURNISH EXCAVATION, INSTALLATION, AND BACKFILL OF ELECTRICAL FURNISHED SITEMARK RELATED ITEMS SUCH AS PULL BOXES, CONDUITS, DUCT BANKS, LIGHT POLE BASES, AND CONCRETE PADS. SITE CONTRACTOR SHALL FURNISH CONCRETE ENCASUREMENT OF DUCT BANKS IF REQUIRED BY THE UTILITY COMPANY AND AS INDICATED ON THE DRAWINGS.

Layout and Materials

- DIMENSIONS ARE FROM THE FACE OF CURB, FACE OF BUILDING, FACE OF WALL, AND CENTER LINE OF PAVEMENT MARKINGS, UNLESS OTHERWISE NOTED.
- CURBING SHALL BE PRECAST CONCRETE WITHIN THE SITE UNLESS OTHERWISE INDICATED ON THE PLANS.
- PROPOSED BOUNDS AND ANY EXISTING PROPERTY LINE MONUMENTATION DISTURBED DURING CONSTRUCTION SHALL BE SET OR RESET BY A PROFESSIONAL LICENSED SURVEYOR.
- PRIOR TO START OF CONSTRUCTION, CONTRACTOR SHALL VERIFY EXISTING PAVEMENT ELEVATIONS AT INTERFACE WITH PROPOSED PAVEMENTS, AND EXISTING GROUND ELEVATIONS ADJACENT TO DRAINAGE OUTLETS TO ASSURE PROPER TRANSITIONS BETWEEN EXISTING AND PROPOSED FACILITIES.
- SYMBOLS AND LEGENDS OF PROJECT FEATURES ARE GRAPHIC REPRESENTATIONS AND ARE NOT NECESSARILY SCALED TO THEIR ACTUAL DIMENSIONS OR LOCATIONS ON THE DRAWINGS. THE CONTRACTOR SHALL REFER TO THE DETAIL SHEET DIMENSIONS, MANUFACTURERS' LITERATURE, SHOP DRAWINGS AND FIELD MEASUREMENTS OF SUPPLIED PRODUCTS FOR LAYOUT OF THE PROJECT FEATURES.
- CONTRACTOR SHALL NOT RELY SOLELY ON ELECTRONIC VERSIONS OF PLANS, SPECIFICATIONS, AND DATA FILES THAT ARE OBTAINED FROM THE DESIGNERS, BUT SHALL VERIFY LOCATION OF PROJECT FEATURES IN ACCORDANCE WITH THE PAPER COPIES OF THE PLANS AND SPECIFICATIONS THAT ARE SUPPLIED AS PART OF THE CONTRACT DOCUMENTS.

Demolition

- CONTRACTOR SHALL DISPOSE OF DEMOLITION DEBRIS IN ACCORDANCE WITH APPLICABLE FEDERAL, STATE AND LOCAL REGULATIONS, ORDINANCES AND STATUTES.
- THE DEMOLITION LIMITS DEPICTED IN THE PLANS IS INTENDED TO AID THE CONTRACTOR DURING THE BIDDING AND CONSTRUCTION PROCESS AND IS NOT INTENDED TO DEPICT EACH AND EVERY ELEMENT OF DEMOLITION. THE CONTRACTOR IS RESPONSIBLE FOR IDENTIFYING THE DETAILED SCOPE OF DEMOLITION BEFORE SUBMITTING ITS BID/PROPOSAL TO PERFORM THE WORK AND SHALL MAKE NO CLAIMS AND SEEK NO ADDITIONAL COMPENSATION FOR CHANGED CONDITIONS OR UNFORESEEN OR LATENT SITE CONDITIONS RELATED TO ANY CONDITIONS DISCOVERED DURING EXECUTION OF THE WORK.
- UNLESS OTHERWISE SPECIFICALLY PROVIDED ON THE PLANS OR IN THE SPECIFICATIONS, THE ENGINEER HAS NOT PREPARED DESIGNS FOR AND SHALL HAVE NO RESPONSIBILITY FOR THE PRESENCE, DISCOVERY, REMOVAL, ABATEMENT OR DISPOSAL OF HAZARDOUS MATERIALS, TOXIC WASTES OR POLLUTANTS AT THE PROJECT SITE. THE ENGINEER SHALL NOT BE RESPONSIBLE FOR ANY CLAIMS OF LOSS, DAMAGE, EXPENSE, DELAY, INJURY OR DEATH ARISING FROM THE PRESENCE OF HAZARDOUS MATERIAL AND CONTRACTOR SHALL INDEMNIFY AND HOLD HARMLESS THE ENGINEER FROM ANY CLAIMS MADE IN CONNECTION THEREWITH. MOREOVER, THE ENGINEER SHALL HAVE NO ADMINISTRATIVE OBLIGATIONS OF ANY TYPE WITH REGARD TO ANY CONTRACTOR AMENDMENT INVOLVING THE ISSUES OF PRESENCE, DISCOVERY, REMOVAL, ABATEMENT OR DISPOSAL OF ASBESTOS OR OTHER HAZARDOUS MATERIALS.

Erosion Control

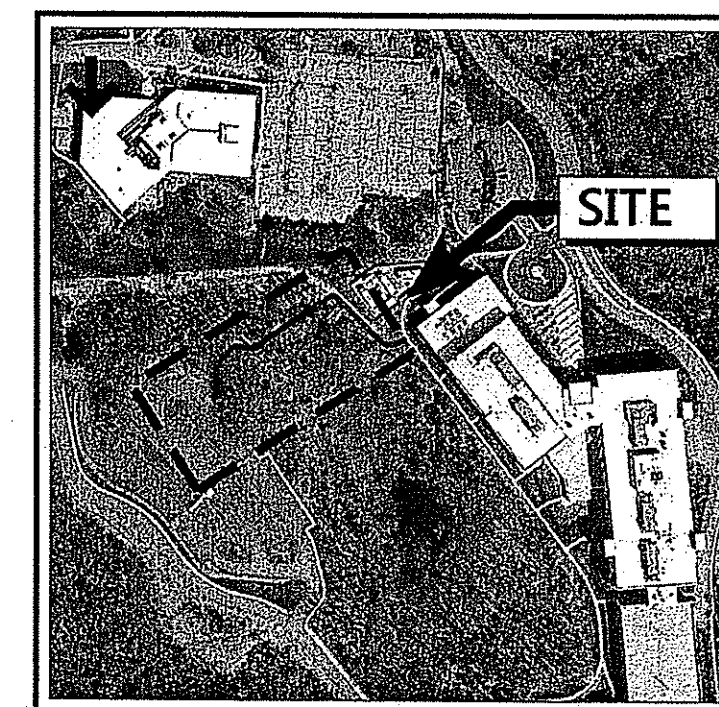
- CONTRACTOR SHALL REFER TO THE SOIL EROSION AND SEDIMENT CONTROL PLAN FOR INFORMATION REGARDING EROSION CONTROL.

Existing Conditions Information

- BASE PLAN: THE TOPOGRAPHY AND PHYSICAL FEATURES ARE BASED ON AN ACTUAL FIELD SURVEY PERFORMED ON THE GROUND BY VANASSE HANGEN BRUSTLIN, INC., BETWEEN APRIL 22, 2015 AND APRIL 24, 2015, AND OCTOBER 21, 2015 AND NOVEMBER 24, 2015.
 - DELINEATION OF THE WETLANDS AND PLACEMENT OF THE FLAGS WAS PERFORMED BY: VANASSE HANGEN BRUSTLIN, INC.
 - FLAGS MARKING THE WETLANDS WERE LOCATED BY: VANASSE HANGEN BRUSTLIN, INC. BY INSTRUMENT SURVEY.
- GEOTECHNICAL DATA INCLUDING TEST PIT AND BORING LOCATIONS AND ELEVATIONS WERE OBTAINED FROM GZA GECENVIRONMENTAL, INC., 530 BROADWAY, PROVIDENCE, RI 02909.

Document Use

- THESE PLANS AND CORRESPONDING CADD DOCUMENTS ARE INSTRUMENTS OF PROFESSIONAL SERVICE, AND SHALL NOT BE USED, IN WHOLE OR IN PART, FOR ANY PURPOSE OTHER THAN FOR WHICH IT WAS CREATED WITHOUT THE EXPRESSED, WRITTEN CONSENT OF VHB. ANY UNAUTHORIZED USE, REUSE, MODIFICATION OR ALTERATION, INCLUDING AUTOMATED CONVERSION OF THIS DOCUMENT SHALL BE AT THE USER'S SOLE RISK WITHOUT LIABILITY OR LEGAL EXPOSURE TO VHB.



KEY PLAN

FM Global Pedestrian Bridge

270 Central Avenue
Johnston, Rhode Island

No.	Revision	Date	App'd.

Issued for: **RIDEM** Date: **April 1, 2016**

DEPARTMENT OF ENVIRONMENTAL MANAGEMENT
OFFICE OF WATER RESOURCES
FRESHWATER WETLANDS PROGRAM
APPROVED WITH CONDITIONS
AS SPECIFIED IN THE LETTER OF APPROVAL
DATED OCT 05 2016 FILE # 16-0093
NO CHANGES ALLOWED WITHOUT PRIOR APPROVAL
APPROVED PLANS MUST BE AT CONSTRUCTION SITE

Not Approved for Construction
Legend and General Notes

JONATHAN B. STABACH
No. 7794
REGISTERED PROFESSIONAL ENGINEER (CIVIL) 1/16

C-1

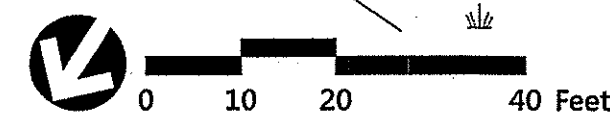
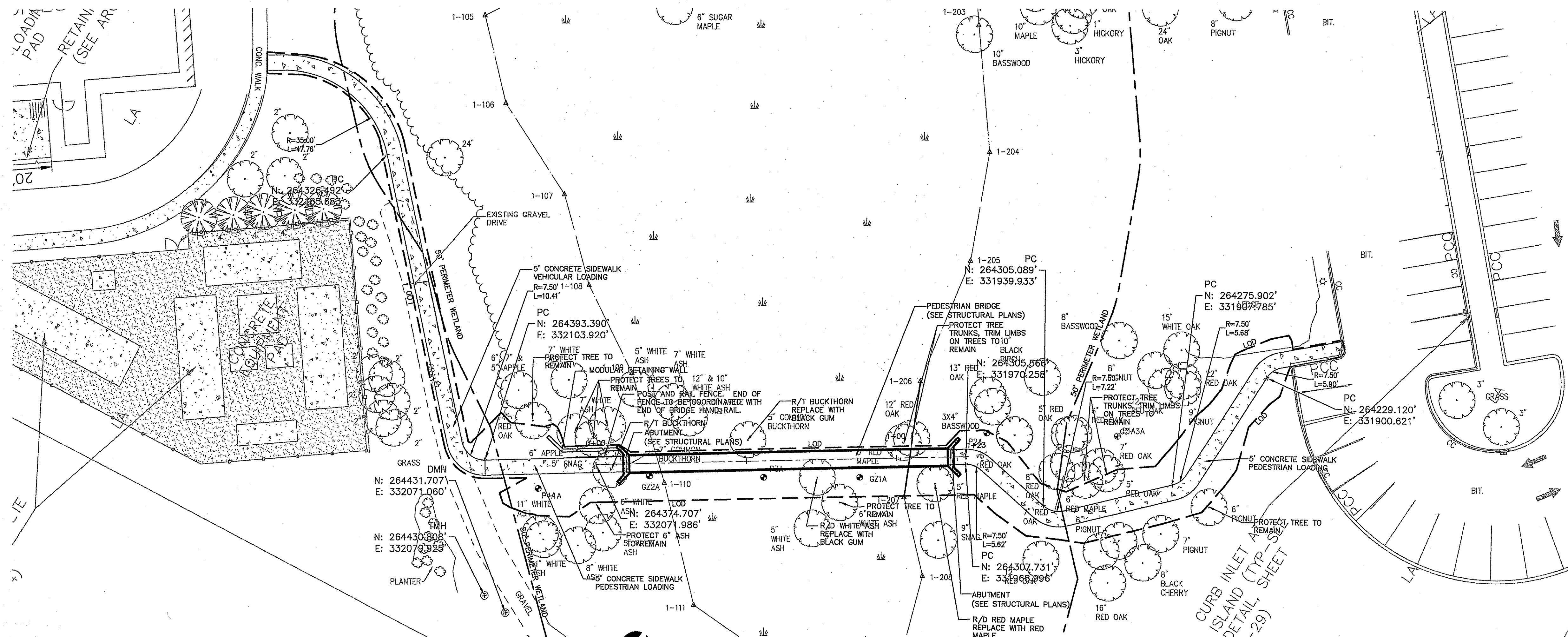
Sheet 1 of 4

Environmental Management
JUL 15 2016
Office of Water Resources

Project Number: 72614.00

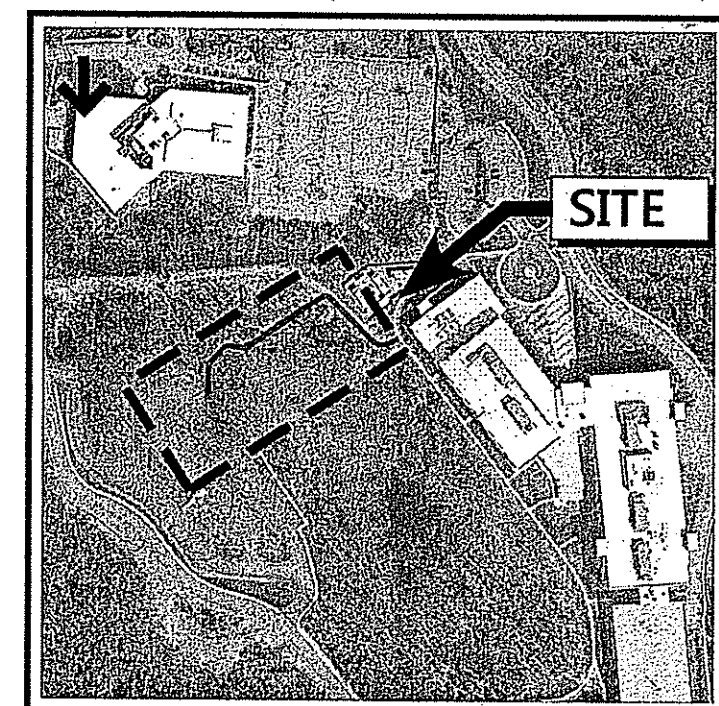


1 Cedar Street
Suite 400
Providence, RI 02903
401.272.8100



LAYOUT AND MATERIALS

DEPARTMENT OF ENVIRONMENTAL MANAGEMENT
OFFICE OF WATER RESOURCES
FRESHWATER WETLANDS PROGRAM
APPROVED WITH CONDITIONS
AS SPECIFIED IN THE LETTER OF APPROVAL
DATED OCT 05 2016 FILE # 16-0093
NO CHANGES ALLOWED WITHOUT PRIOR APPROVAL
APPROVED PLANS MUST BE AT CONSTRUCTION SITE



KEY PLAN

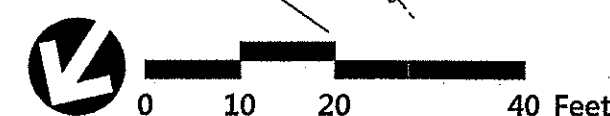
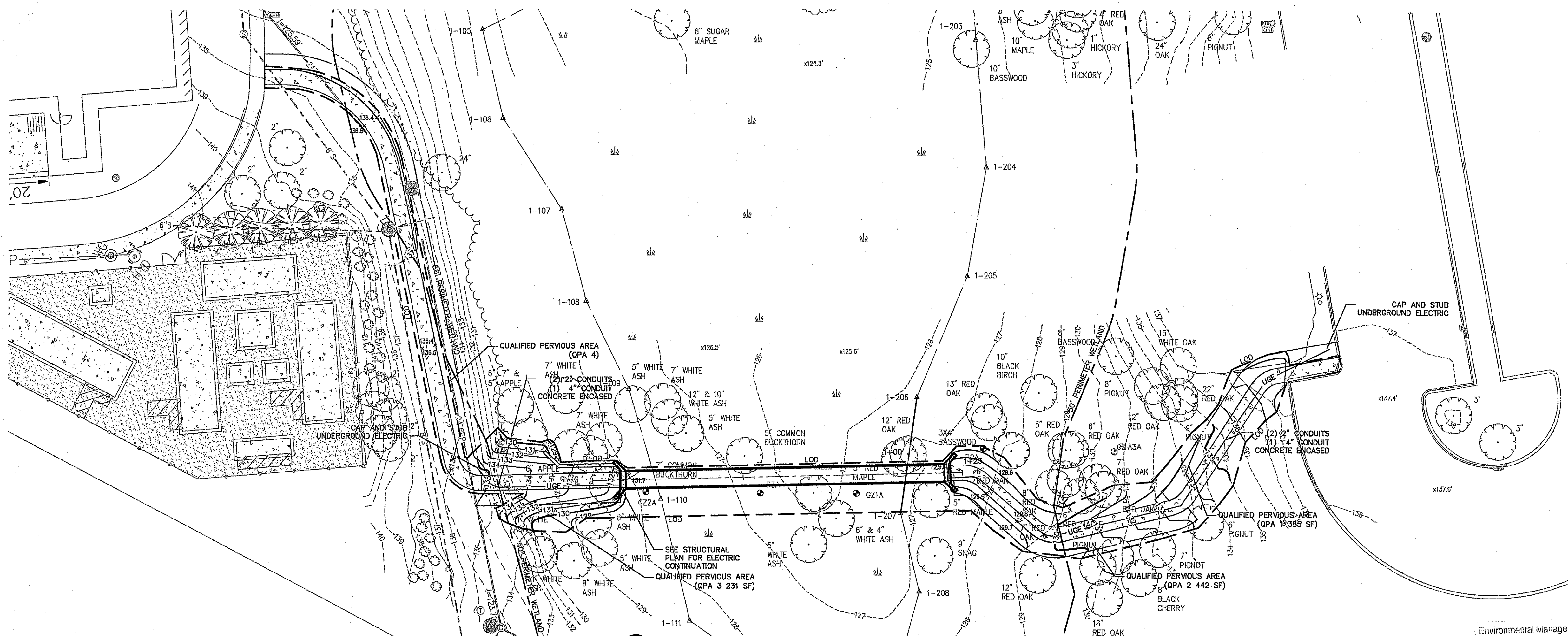
FM Global Pedestrian Bridge

270 Central Avenue
Johnston, Rhode Island

No.	Revision	Date	Appr.

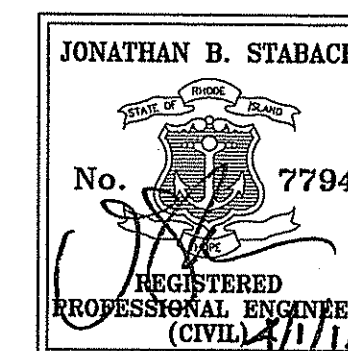
Issued for: RIDEM Date: April 1, 2016

Not Approved for Construction
Layout, Materials,
Grading, and Utility Plan



GRADING AND UTILITIES

Environmental Management
JUL 15 2016
Office of Water Resources



C-2

Sheet 2 of 4

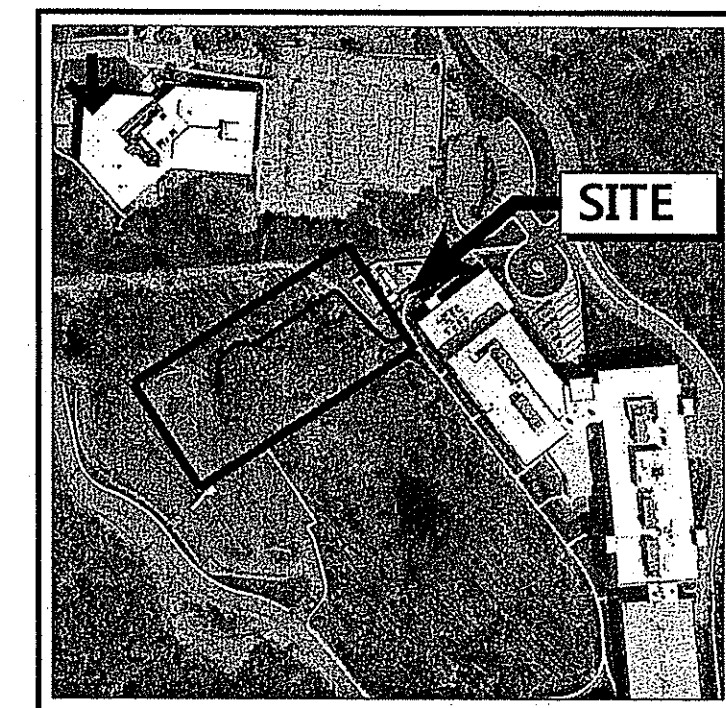
Project Number 72614.00



1 Cedar Street
Suite 400
Providence, RI 02903
401.272.8100

DEPARTMENT OF ENVIRONMENTAL MANAGEMENT
OFFICE OF WATER RESOURCES
FRESHWATER WETLANDS PROGRAM
APPROVED WITH CONDITIONS
AS SPECIFIED IN THE LETTER OF APPROVAL
DATED OCT 05 2016 FILE # 16-0093
NO CHANGES ALLOWED WITHOUT PRIOR APPROVAL
APPROVED PLANS MUST BE AT CONSTRUCTION SITE

- Notes:
- TOTAL SITE AREA = 93+ ACRES.
TOTAL SITE DISTURBANCE = 0.17 ACRES.
 - LOCATION OF RECEIVING WATERS IS THE PAWTUCKET RIVER.
 - NO PORTION OF THE SITE FALLS WITHIN OR DIRECTLY DISCHARGES TO A NATURAL HERITAGE AREA (NHA), OR OTHERWISE IMPACTS THREATENED SPECIES OR HABITATS.



KEY PLAN

**FM Global
Pedestrian Bridge**
270 Central Avenue
Johnston, Rhode Island

No.	Revision	Date	Apprv.

Issued for: **RIDEM** Date: **April 1, 2016**

Not Approved for Construction
Soil Erosion and Sediment Control Plan

JONATHAN B. STABACH
REGISTERED PROFESSIONAL ENGINEER (CIVIL) 7794
Project Number: 72614.00

SESC-1
Sheet 4 of 4

Environmental Management
JUL 15 2016
Office of Water Resources

General

- CONTRACTOR SHALL NOTIFY "DIG-SAFE" (1-888-344-7233) AT LEAST 72 HOURS BEFORE EXCAVATING.
- CONTRACTOR SHALL BE RESPONSIBLE FOR SITE SECURITY AND JOB SAFETY. CONSTRUCTION ACTIVITIES SHALL BE IN ACCORDANCE WITH OSHA STANDARDS AND LOCAL REQUIREMENTS.
- AREAS DISTURBED OUTSIDE WETLAND AND PERIMETER WETLAND DURING CONSTRUCTION AND NOT RESTORED WITH IMPERVIOUS SURFACES (BUILDINGS, PAVEMENTS, WALKS, ETC.) SHALL RECEIVE 6 INCHES LOAM AND SEED. REFER TO CONSTRUCTION WORK IN WETLAND PERIMETER WETLANDS NOTES REGARDING RESTORATION IN WETLAND AND PERIMETER WETLAND.
- CONTRACTOR SHALL PROTECT AND PERSEVERE AS MANY EXISTING TREES AS POSSIBLE.
- UPON AWARD OF CONTRACT, CONTRACTOR SHALL MAKE NECESSARY CONSTRUCTION NOTIFICATIONS AND APPLY FOR AND OBTAIN NECESSARY PERMITS, PAY FEES, AND POST BONDS ASSOCIATED WITH THE WORK INDICATED ON THE DRAWINGS, IN THE SPECIFICATIONS, AND IN THE CONTRACT DOCUMENTS. DO NOT CLOSE OR OBSTRUCT ROADWAYS, SIDEWALKS, AND FIRE HYDRANTS, WITHOUT APPROPRIATE PERMITS.
- AREAS OUTSIDE THE LIMITS OF PROPOSED WORK DISTURBED BY THE CONTRACTOR'S OPERATIONS SHALL BE RESTORED BY THE CONTRACTOR TO THEIR ORIGINAL CONDITION AT THE CONTRACTOR'S EXPENSE.
- IN THE EVENT THAT SUSPECTED CONTAMINATED SOIL, GROUNDWATER, AND OTHER MEDIA ARE ENCOUNTERED DURING EXCAVATION AND CONSTRUCTION ACTIVITIES BASED ON VISUAL, OLFACTORY, OR OTHER EVIDENCE, THE CONTRACTOR SHALL STOP WORK IN THE VICINITY OF THE SUSPECT MATERIAL TO AVOID FURTHER SPREADING OF THE MATERIAL, AND SHALL NOTIFY THE OWNER IMMEDIATELY SO THAT THE APPROPRIATE TESTING AND SUBSEQUENT ACTION CAN BE TAKEN.
- CONTRACTOR SHALL PREVENT DUST, SEDIMENT, AND DEBRIS FROM EXITING THE SITE AND SHALL BE RESPONSIBLE FOR CLEANUP, REPAIRS AND CORRECTIVE ACTION IF SUCH OCCURS.
- CONTRACTOR SHALL CONTROL STORMWATER RUNOFF DURING CONSTRUCTION TO PREVENT ADVERSE IMPACTS TO OFF-SITE AREAS, AND SHALL BE RESPONSIBLE TO REPAIR RESULTING DAMAGES, IF ANY, AT NO COST TO OWNER.
- STAGING AND STOCKPILE AREAS SHALL NOT BE LOCATED WITHIN ANY WETLAND AND ABUTTING RESOURCE AREA AND SHALL BE LOCATED WITHIN THE LOD.
- THE CONTRACTOR SHALL RED LINE THE SOIL EROSION AND SEDIMENT CONTROL PLAN BY ADDING THE FOLLOWING:
 - BUILDING MATERIALS STAGING AREAS
 - STOCKPILE AREAS. EROSION CONTROLS SHALL BE PLACED AT THE BASE OF ALL STOCKPILES
 - DESIGNATED WASHOUT AREAS.
 - TEMPORARY SEDIMENT BASIN AREAS.

Erosion Control

- PRIOR TO STARTING ANY OTHER WORK ON THE SITE, THE CONTRACTOR SHALL NOTIFY APPROPRIATE AGENCIES AND SHALL INSTALL EROSION CONTROL MEASURES AS SHOWN ON THE PLANS AND AS IDENTIFIED IN FEDERAL, STATE, AND LOCAL APPROVAL DOCUMENTS PERTAINING TO THIS PROJECT.
- CONTRACTOR SHALL INSPECT AND MAINTAIN EROSION CONTROL MEASURES DAILY, AND REMOVE SEDIMENT THEREFROM ON A WEEKLY BASIS AND WITHIN TWELVE HOURS AFTER EACH STORM EVENT AND DISPOSE OF SEDIMENTS IN AN UPLAND AREA SUCH THAT THEY DO NOT ENCUMBER OTHER DRAINAGE STRUCTURES AND PROTECTED AREAS.
- CONTRACTOR SHALL BE FULLY RESPONSIBLE TO CONTROL CONSTRUCTION SUCH THAT SEDIMENTATION SHALL NOT AFFECT REGULATORY PROTECTED AREAS, WHETHER SUCH SEDIMENTATION IS CAUSED BY WATER, WIND, OR DIRECT DEPOSIT.
- CONTRACTOR SHALL PERFORM CONSTRUCTION SEQUENCING SUCH THAT EARTH MATERIALS ARE EXPOSED FOR A MINIMUM OF TIME BEFORE THEY ARE COVERED, SEEDDED, OR OTHERWISE STABILIZED TO PREVENT EROSION.
- UPON COMPLETION OF CONSTRUCTION AND ESTABLISHMENT OF PERMANENT GROUND COVER, CONTRACTOR SHALL REMOVE AND DISPOSE OF EROSION CONTROL MEASURES AND CLEAN SEDIMENT AND DEBRIS FROM ENTIRE DRAINAGE AND SEWER SYSTEMS.
- STABILIZED CONSTRUCTION EXIT. A CROSS SLOPE WILL BE PLACED IN THE ENTRANCE TO DIRECT RUNOFF TO A PROTECTED SETTLING AREA. IF DEEMED NECESSARY AFTER CONSTRUCTION BEGINS, A WASH PAD MAY BE INCLUDED TO WASH OFF VEHICLE WHEELS BEFORE LEAVING THE PROJECT SITE.
- TEMPORARY SEDIMENT BASIN WILL BE DESIGNED EITHER AS EXCAVATIONS OF BERMED STORMWATER DETENTION STRUCTURES THAT WILL RETAIN RUNOFF FOR A SUFFICIENT PERIOD OF TIME TO ALLOW SUSPENDED SOIL PARTICLES TO SETTLE OUT PRIOR TO DISCHARGE. BASINS WILL BE LOCATED AS DETERMINED BY THE CONTRACTOR BASED ON CONSTRUCTION NEEDS. POINT OF DISCHARGE FROM SEDIMENT BASINS WILL BE STABILIZED TO MINIMIZE EROSION.
- VEGETATIVE SLOPE STABILIZATION WILL BE IMPLEMENTED WITHIN 14 DAYS AFTER GRADING OR CONSTRUCTION ACTIVITIES HAVE TEMPORARILY OR PERMANENTLY CEASED. VEGETATIVE SLOPE STABILIZATION WILL BE USED TO MINIMIZE EROSION ON SLOPES OF 3:1 OR STEEPER. ESTABLISHMENT OF TEMPORARY AND PERMANENT VEGETATIVE COVER MAY BE ESTABLISHED BY HYDRO-SEEDING OR SODDING. A SUITABLE TOPSOIL, GOOD SEEDING PREPARATION, AND ADEQUATE LIME, FERTILIZER AND WATER WILL BE PROVIDED FOR EFFECTIVE ESTABLISHMENT OF THESE VEGETATIVE STABILIZATION METHODS. MULCH WILL ALSO BE USED AFTER PERMANENT SEEDING TO PROTECT SOIL FROM THE IMPACT OF FALLING RAIN AND TO INCREASE THE CAPACITY OF THE SOIL TO ABSORB WATER.

Qualified Pervious Areas (QPA's) Protection During Construction

FOR THE LONG-TERM FUNCTION OF THE QUALIFIED PERVIOUS AREAS CARE MUST BE TAKEN IN THIS AREA DURING CONSTRUCTION. THE CONTRACTOR SHALL EMPLOY THE FOLLOWING MINIMUM BEST MANAGEMENT PRACTICES (BMPs):

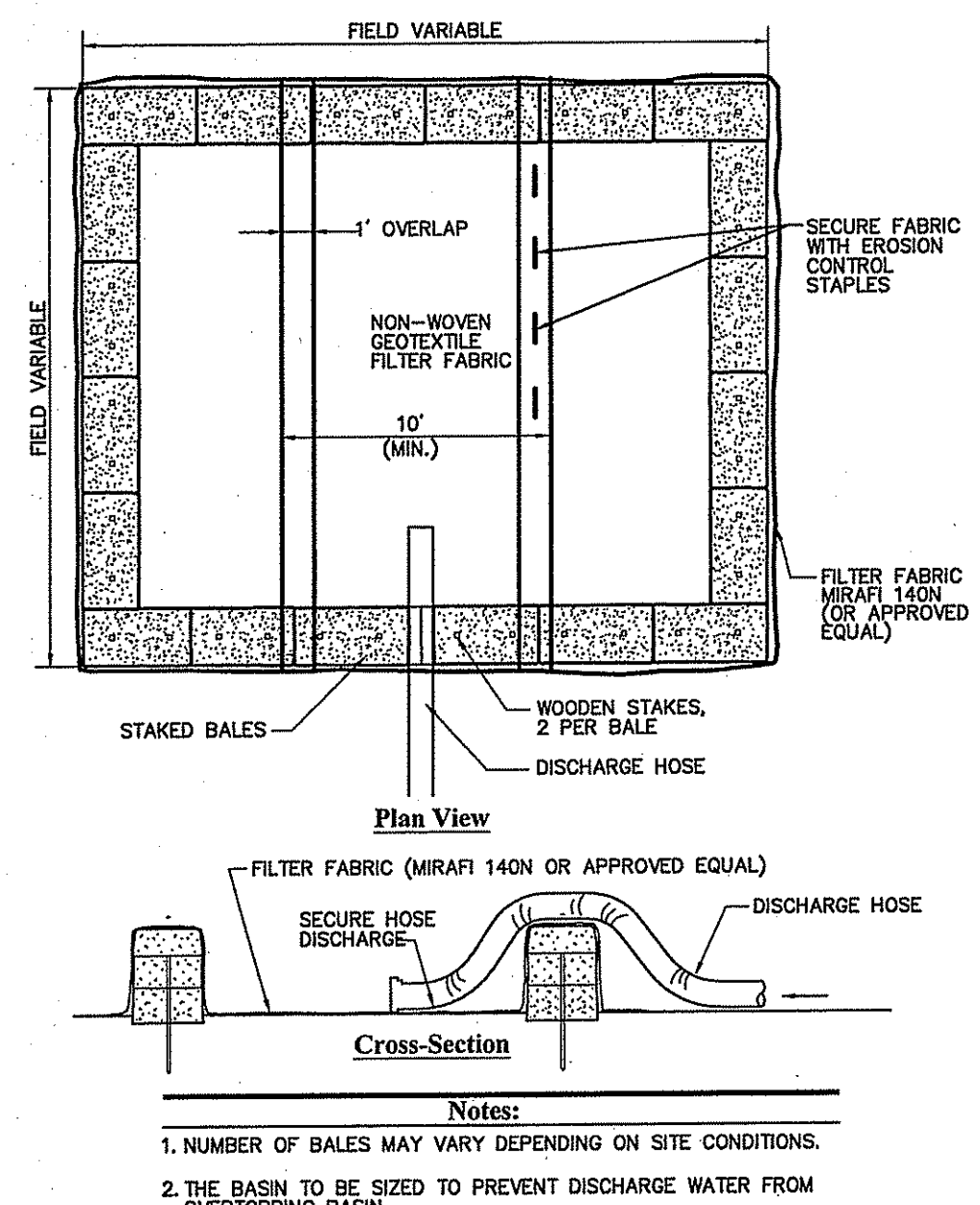
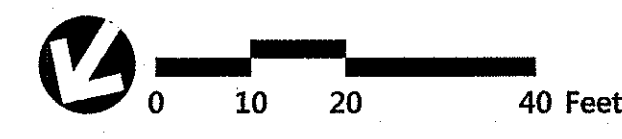
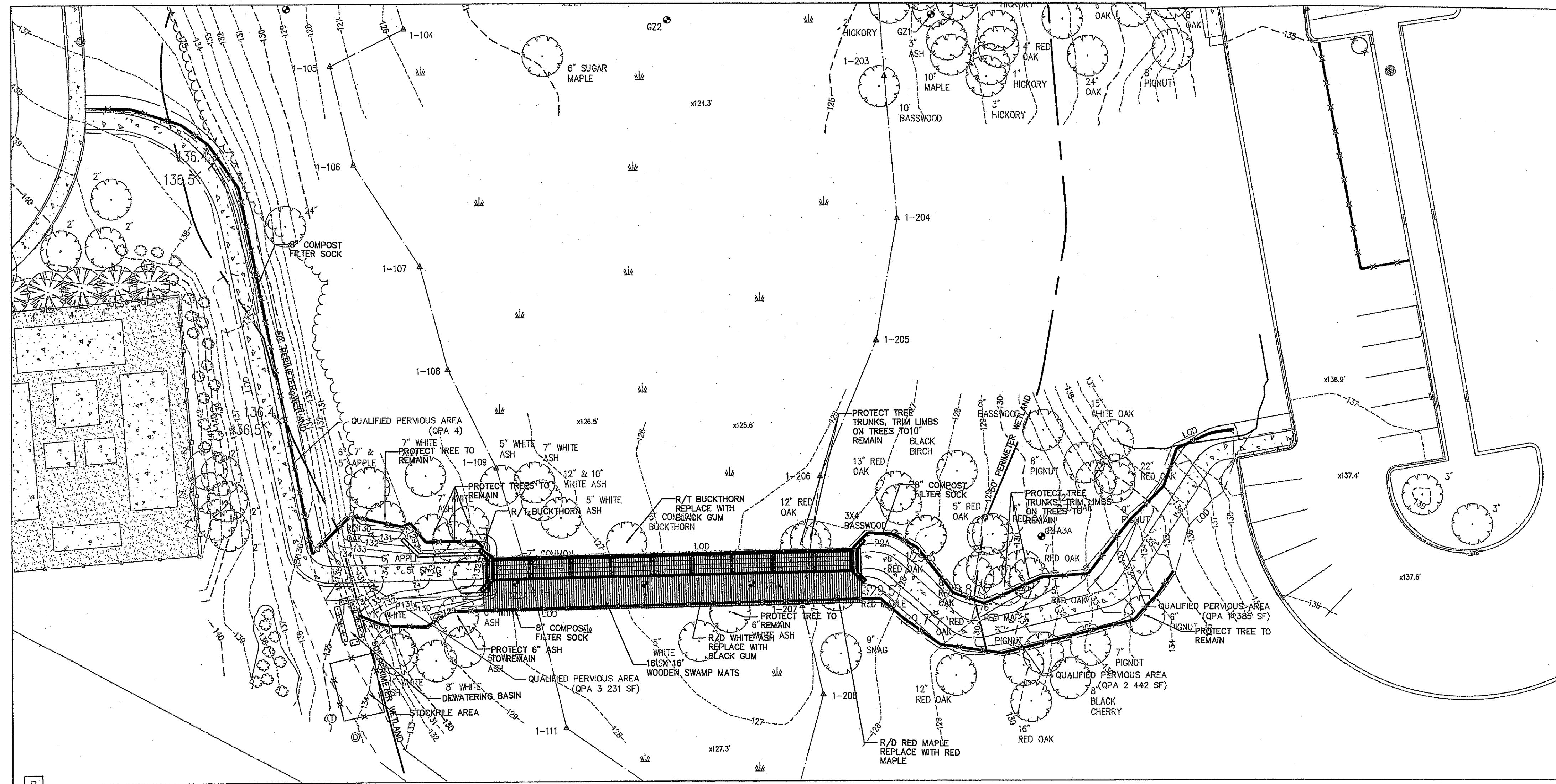
- CONSTRUCTION VEHICLE ACCESS TO THE BRIDGE WILL ENROACH ON PORTIONS OF THE QPA'S. THE SOIL IN THESE AREAS MUST BE SUITABLY AMENDED, TILLED, AND RE-VEGETATED ONCE CONSTRUCTION IS COMPLETE TO RESTORE INFILTRATION CAPACITY.
- THE CONTRACTOR SHALL INSTALL TEMPORARY CONSTRUCTION FENCING AROUND THE PERIMETER OF THE QPA'S WHICH WILL NOT BE DISTURBED TO PREVENT THE USE OF THESE AREAS FOR ALL ACTIVITIES THAT MIGHT DAMAGE THE INFILTRATION CAPABILITIES. THE FENCING MAY BE REMOVED FOR BACKFILLING AND FINAL CONSTRUCTION.

Construction Work in Wetland and Perimeter Wetlands

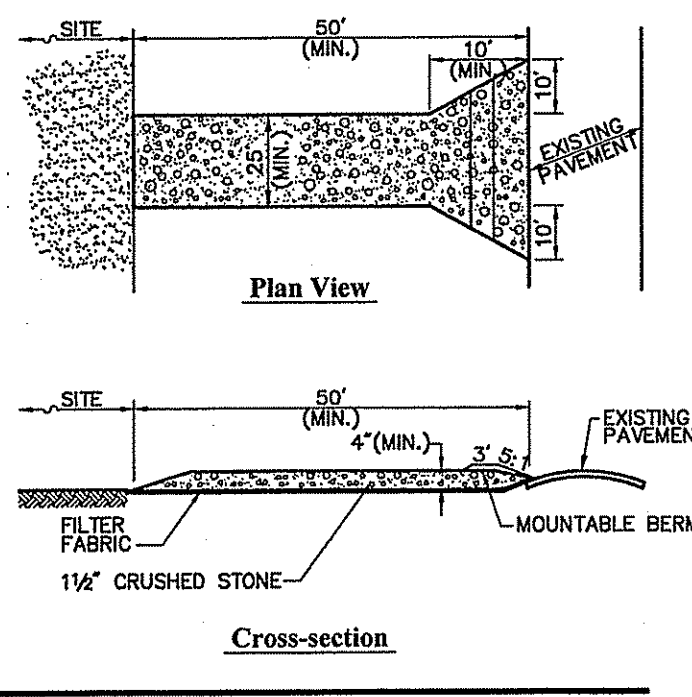
- INSTALL NATIVE SHRUB MATERIAL SALVAGED DURING BACKFILL OPERATION.
- SEED WITH NATIVE WETLAND SEED MIX, NEW ENGLAND WETLAND PLANTS WET MIX OR EQUIVALENT.

Prior To Clearing

- ALL TREES TO BE CUT MUST BE MARKED AND THE LOD STAKED.
- TREES TO REMAIN WITHIN 10 FEET OF THE LOD SHALL HAVE TREE PROTECTION INSTALLED.
- THE CONTRACTOR SHALL NOTIFY THE ENGINEER ONCE THE ABOVE ITEMS ARE COMPLETE FOR INSPECTION PRIOR TO ANY CLEARING.

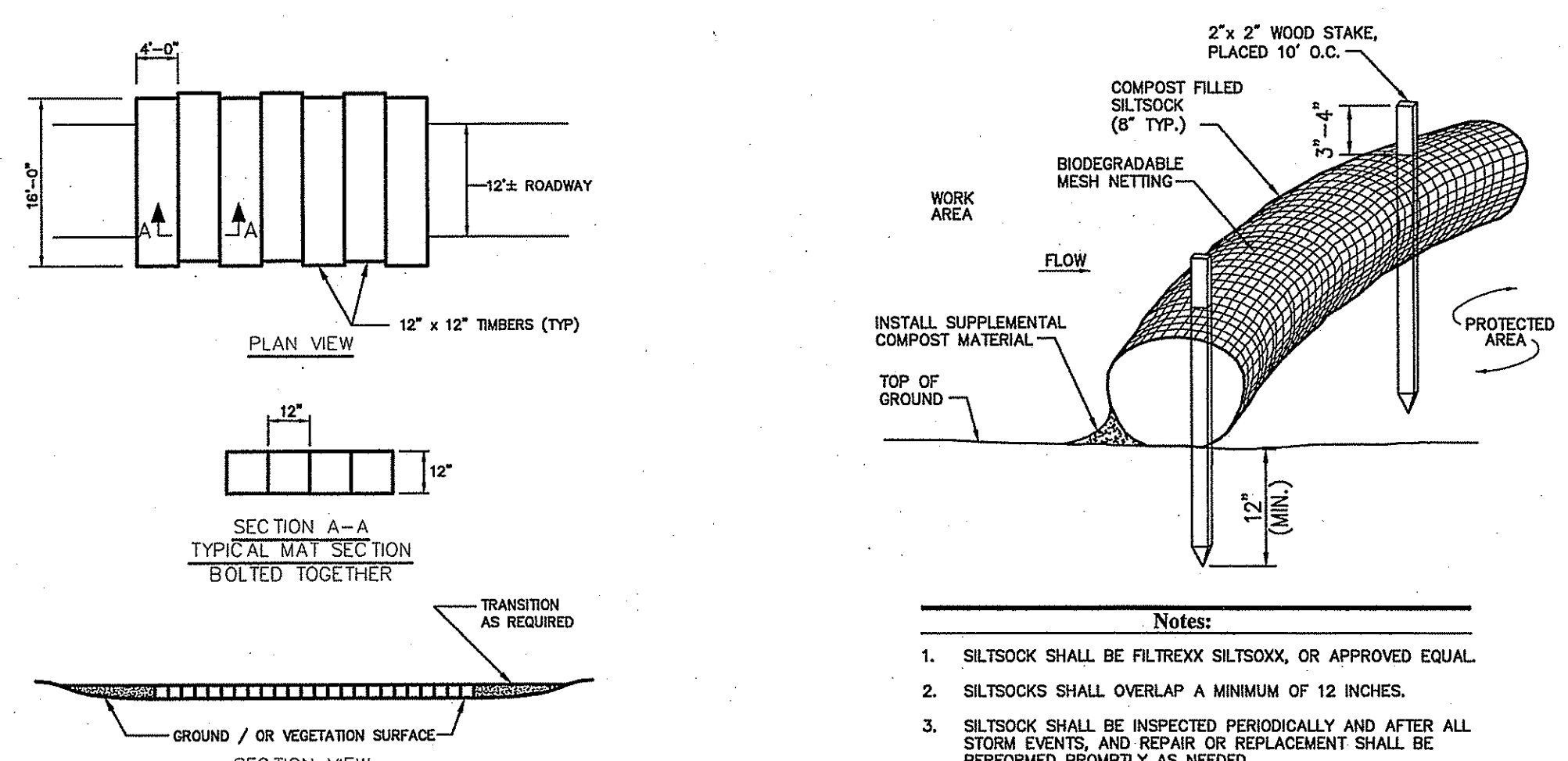


Dewatering Straw Bale Basin
2/11
N.T.S. Source: VHB LD_690



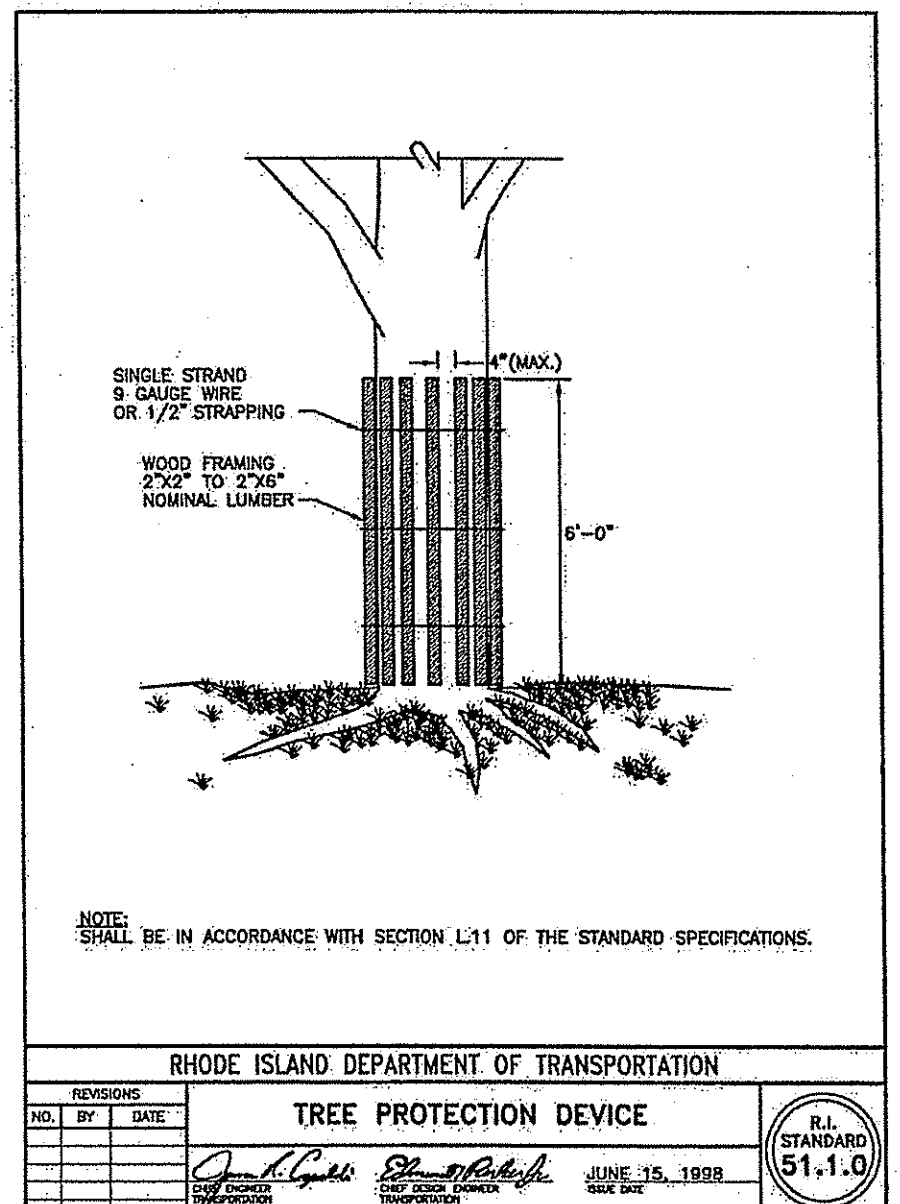
- Notes:
- ENTRANCE WIDTH SHALL BE A TWENTY-FIVE (25) FOOT MINIMUM, BUT NOT LESS THAN THE FULL WIDTH AT POINTS WHERE INGRESS OR EGRESS OCCURS.
 - THE ENTRANCE SHALL BE MAINTAINED IN A CONDITION WHICH SHALL PREVENT TRACKING OR FLOWING OF SEDIMENT ONTO PUBLIC RIGHTS-OF-WAY. THIS MAY REQUIRE PERIODIC TOP DRESSING WITH ADDITIONAL STONE AS CONDITIONS DEMAND AND REPAIR OR CLEANOUT OF ANY MEASURES USED TO TRAP SEDIMENT. ALL SEDIMENT SPILLED, DROPPED, WASHED OR TRACKED ONTO PUBLIC RIGHTS-OF-WAY MUST BE REMOVED IMMEDIATELY. BERM SHALL BE PERMITTED. PERIODIC INSPECTION AND MAINTENANCE SHALL BE PROVIDED AS NEEDED.
 - STABILIZED CONSTRUCTION EXIT SHALL BE REMOVED PRIOR TO FINAL FINISH MATERIALS BEING INSTALLED.

Stabilized Construction Exit
6/08
N.T.S. Source: VHB LD_682



- Notes:
- SILTSOCK SHALL BE FILTREX SILT SOCK, OR APPROVED EQUAL.
 - SILTSOCKS SHALL OVERLAP A MINIMUM OF 12 INCHES.
 - SILTSOCK SHALL BE INSPECTED PERIODICALLY AND AFTER ALL STORM EVENTS, AND REPAIR OR REPLACEMENT SHALL BE PERFORMED PROMPTLY AS NEEDED.
 - COMPOST MATERIAL SHALL BE DISPersed ON SITE, AS DETERMINED BY THE ENGINEER.
 - IF NON BIODEGRADABLE NETTING IS USED THE NETTING SHALL BE COLLECTED AND DISPOSED OF OFFSITE.

Swamp Mat Detail
N.T.S. Source: The Narragansett Electric Company



Tree Protection Device
JUL 15 2016
Office of Water Resources

GENERAL NOTES:

SPECIFICATIONS:

CONSTRUCTION:

AASHTO LRFD BRIDGE DESIGN SPECIFICATIONS, 7TH EDITION
 NATIONAL DESIGN SPECIFICATION FOR WOOD CONSTRUCTION AND SUPPLEMENT (NDS), 2015
 ASCE 7-10, MINIMUM DESIGN LOADS FOR BUILDINGS AND OTHER STRUCTURES AND SUPPLEMENT

DESIGN LOADING:

BOARDWALK AND SUPPORTING MEMBERS: 90 PSF PEDESTRIAN LOAD ONLY (NO VEHICULAR LOADING) RAILING LOADING: 50 PLF APPLIED VERTICALLY AND HORIZONTALLY SIMULTANEOUSLY PER RAIL RAIL POST LOADING: 200 LB APPLIED TO THE TOP OF THE RAIL POST. RAILING AND RAIL POSTS ARE NOT DESIGNED TO RESIST VEHICULAR IMPACT.

MATERIALS:

TIMBER:

USE MOISTURESHIELD COMPOSITE PLASTIC LUMBER FOR ALL SOLID DECK BOARDS, RAILS, BALUSTERS, RAIL BLOCKING, AND RAIL CAPS. USE TREATED SOUTHERN PINE NO. 1 FOR ALL TIMBER. TREAT TIMBER RAIL POSTS WITH ACQ-B PRESERVATIVE AND TREAT ALL OTHER TIMBER WITH CCA PRESERVATIVE. ACCEPTABLE PRESERVATIVE TYPES AND MINIMUM PRESERVATIVE RETENTION RATES (LBS OF PRESERVATIVE PER CUBIC FOOT OF TIMBER) ARE:

MEMBER	PRESERVATIVE TYPE	AWPA USE CATEGORY	PRESERVATIVE RETENTION (PCF)
PILES	CHROMATED COPPER ARSENATE (CCA)	UC4C	0.8
PILE CAP, STRINGERS, LAGGING	CHROMATED COPPER ARSENATE (CCA)	UC4B	0.6
RAIL POSTS	ALKALINE COPPER QUATERNARY (ACQ)	UC4A	0.4

USE WATERBORNE PRESERVATIVES.

ALL TIMBER DIMENSIONS SHOWN ON THE PLANS ARE NOMINAL UNLESS NOTED OTHERWISE. USE STANDARD DRESSED DIMENSIONS FOR SAWN LUMBER AS SPECIFIED BY THE SOUTHERN PINE INSPECTION BUREAU (SPIB) GRADING RULES, LATEST EDITION.

CUTS, ABRASIONS, NOTCHED MEMBERS, AND BOLT HOLES BORED AFTER PRESERVATIVE TREATMENT SHALL BE TREATED WITH THE SAME PRESERVATIVE AS THE TYPE USED TO TREAT THE PRODUCT. WHEN FIELD APPLICATIONS OF THE PRESERVATIVE ARE REQUIRED, THE MATERIALS SHALL BE FURNISHED, PREPARED, AND APPLIED IN ACCORDANCE WITH AWPA STANDARD M4.

PILING:

THE FOLLOWING GUIDELINES SHALL BE FOLLOWED IN ACCORDANCE WITH GEOTECHNICAL RECOMMENDATIONS ESTABLISHED BY GZA GEOENVIRONMENTAL INC., IN THEIR GEOTECHNICAL ENGINEERING REPORT FOR THIS PROJECT DATED APRIL 2015 (REVISED NOVEMBER 13, 2015) AND SUPPLEMENTAL MEMORANDUM DATED JANUARY 7, 2016 WITH THE SUBJECT LINE "PEDESTRIAN BRIDGE TIMBER PILE RECOMMENDATIONS-REVISED.

ALL PILES SHALL BE DRIVEN TO ACHIEVE A 10 TON AXIAL CAPACITY UNLESS DIRECTED BY THE ENGINEER. THE PILES SHOULD HAVE A BUTT DIAMETER OF 10 INCHES MEASURED 3 FT. FROM TOP OF PILE TAPERING TO A MINIMUM TIP DIAMETER OF 6 INCHES. DUE TO DENSE GLACIAL TILL SOILS, PRE-AUGERING WILL NEED TO BE PERFORMED. THE DRILLED HOLE SHOULD BE A SMALLER DIAMETER THAN THE PILE SO THAT SKIN FRICTION WILL NOT BE ELIMINATED. ONCE EMBEDMENT DEPTHS ARE ATTAINED, THE PILES CAN BE DRIVEN TO THE REQUIRED DRIVING RESISTANCE TO CONFIRM AXIAL CAPACITY. STEEL DRIVING SHOES SHOULD BE ATTACHED TO THE TIPS OF THE PILE TO REDUCE DAMAGE DURING DRIVING.

MINIMUM PILE TIP ELEVATIONS ARE PROVIDED ONLY FOR ESTIMATING PURPOSES.

PILES SHALL BE INSTALLED IN ONE PIECE. SPLICES WILL NOT BE ALLOWED UNLESS APPROVED BY THE ENGINEER.

PILE DRIVING HAMMER SPECIFICATIONS SHALL BE SUBMITTED TO THE ENGINEER TO ASSESS PILE DRIVING SYSTEM SUITABILITY.

CONNECTORS:

USE STAINLESS STEEL CONNECTORS AT ALL CONNECTIONS.

USE THREADED ROD, THRU BOLTS, OR CARRIAGE BOLTS CONFORMING TO ASTM A320, GRADE B8, CLASS 2 FOR ALL BOLT CONNECTIONS.

USE OGEE OR DOCK WASHERS, LOCK WASHERS, AND NUTS ON EACH END.

USE NUTS CONFORMING TO THE REQUIREMENTS OF ASTM A194 GRADE 8, STAINLESS AISI 304.

USE WASHERS CONFORMING TO THE REQUIREMENTS OF SS304.

DO NOT USE NAILS AS A CONNECTOR UNLESS OTHERWISE NOTED IN THESE PLANS. COUNTERSINK ALL SCREWS.

ALL STRUCTURAL STEEL SHALL BE GRADE 50 HOT DIPPED GALVANIZED UNLESS NOTED.

ELECTRICAL:

SEE ELECTRICAL SHEETS FOR ELECTRICAL NOTES.

GENERAL CONSTRUCTION NOTES:

- DESIGN AND DETAIL ALL CONNECTIONS AND FRAMING NOT OTHERWISE DETAILED ON THE PLANS. DEVELOP THE FULL CAPACITY OF THE STRUCTURAL MEMBERS IN ALL CONNECTIONS IN ACCORDANCE WITH THE LATEST EDITION OF THE NATIONAL DESIGN SPECIFICATION FOR WOOD CONSTRUCTION AND SUPPLEMENT (NDS). SUBMIT DETAILS OF ANY REQUIRED CONNECTIONS AND FRAMING NOT OTHERWISE DETAILED ON THE PLANS TO THE ENGINEER FOR REVIEW AND APPROVAL PRIOR TO BEGINNING ANY WORK.
- TIGHTEN THRU-BOLT CONNECTIONS SO THAT WASHERS JUST START TO PRESS INTO THE WOOD SUBSTRATE.

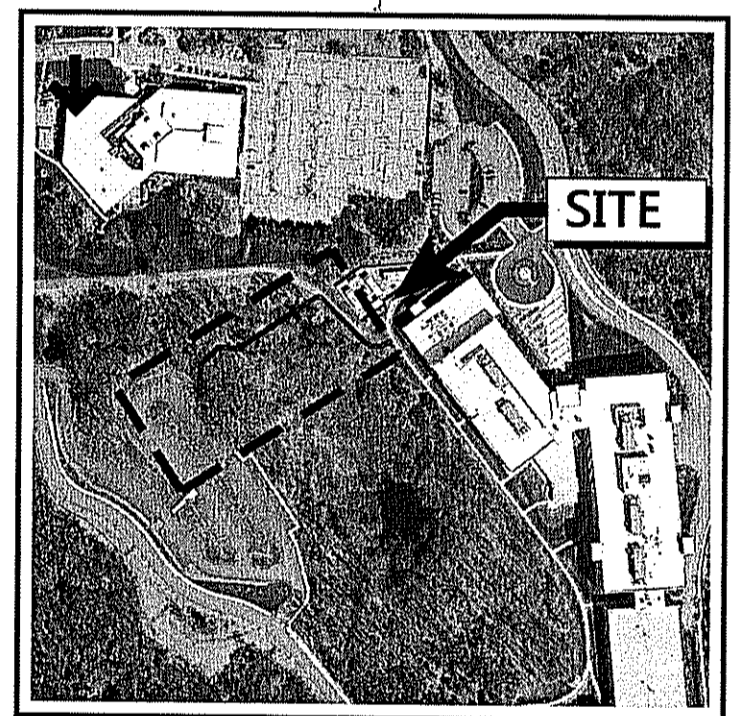
WORKING POINT COORDINATES

WORKING POINT	SUPPORT	STATION	NORTHING	EASTING	TOP OF SUPPORT ELEVATION	APPROXIMATE PILE TIP ELEVATION
W.P. 1	ABUTMENT 1	0+10	264369.0862	332063.715	130.84	118
W.P. 2	PIER 1	0+22	264362.3407	332053.7904	130.24	117
W.P. 3	PIER 2	0+34	264355.5951	332043.8658	129.64	117
W.P. 4	PIER 3	0+46	264348.8496	332033.9412	129.04	117
W.P. 5	PIER 4	0+58	264342.1041	332024.0165	128.44	116
W.P. 6	PIER 5	0+70	264335.3586	332014.0919	127.84	117
W.P. 7	PIER 6	0+82	264328.6131	332004.1673	127.84	117
W.P. 8	PIER 7	0+94	264321.8676	331994.2427	128.08	117
W.P. 9	PIER 8	1+06	264315.1221	331984.3181	128.32	118
W.P. 10	ABUTMENT 2	1+18	264308.3766	331974.3934	128.56	118



1 Cedar Street
 Suite 400
 Providence, RI 02903
 401.272.8100

DEPARTMENT OF ENVIRONMENTAL MANAGEMENT
 OFFICE OF WATER RESOURCES
 FRESHWATER WETLANDS PROGRAM
 APPROVED WITH CONDITIONS
 AS SPECIFIED IN THE LETTER OF APPROVAL
 DATED OCT 05 2016 FILE # 16-0093
 NO CHANGES ALLOWED WITHOUT PRIOR APPROVAL
 APPROVED PLANS MUST BE AT CONSTRUCTION SITE



KEY PLAN

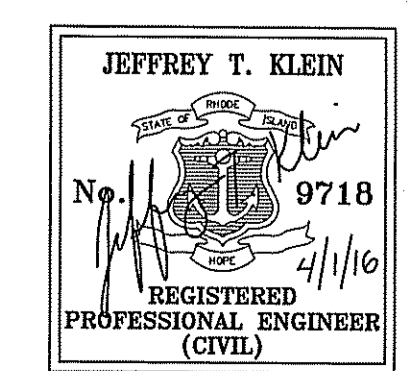
**FM Global
 Pedestrian Bridge**

270 Central Avenue
 Johnston, Rhode Island

No.	Revision	Date	Appr.

Designed by: JMR Checked by: AFP
 Issued for: Date: April 1, 2016
RIDEM

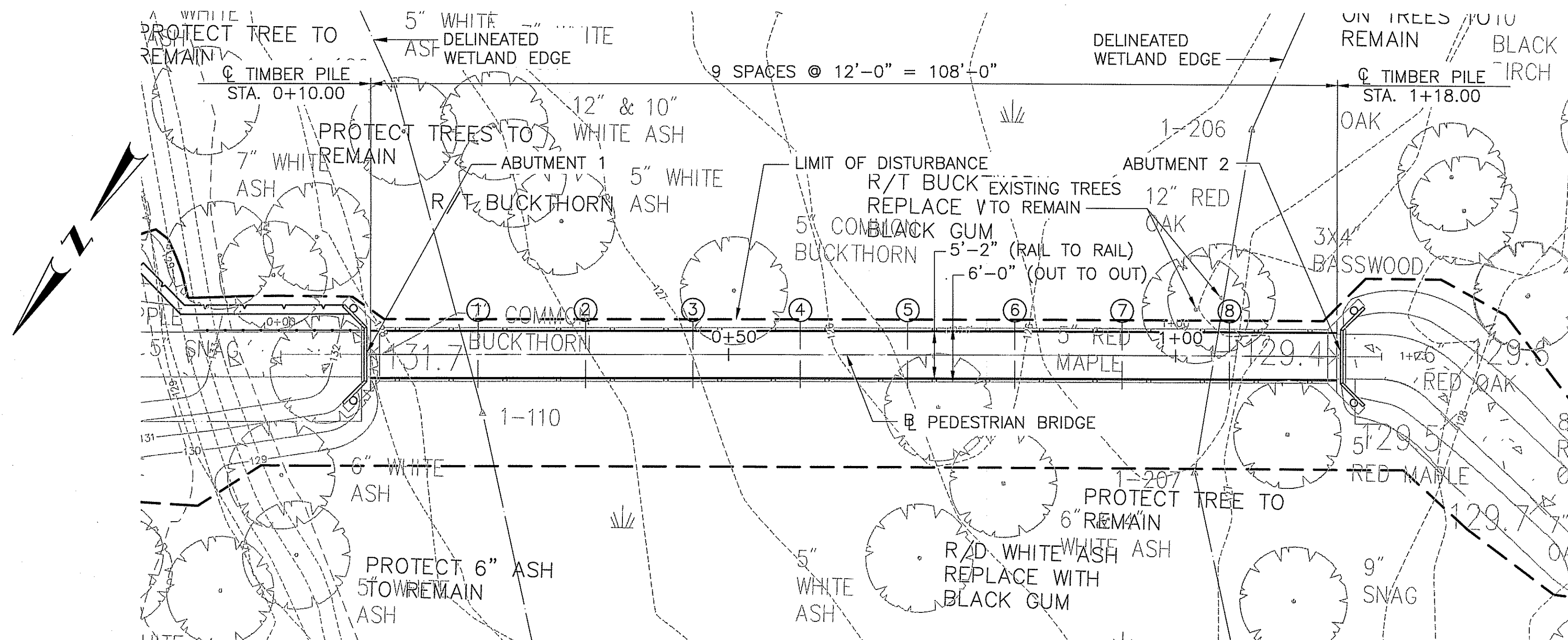
Not Approved for Construction
 Drawing Title
General Notes
 Drawing Number



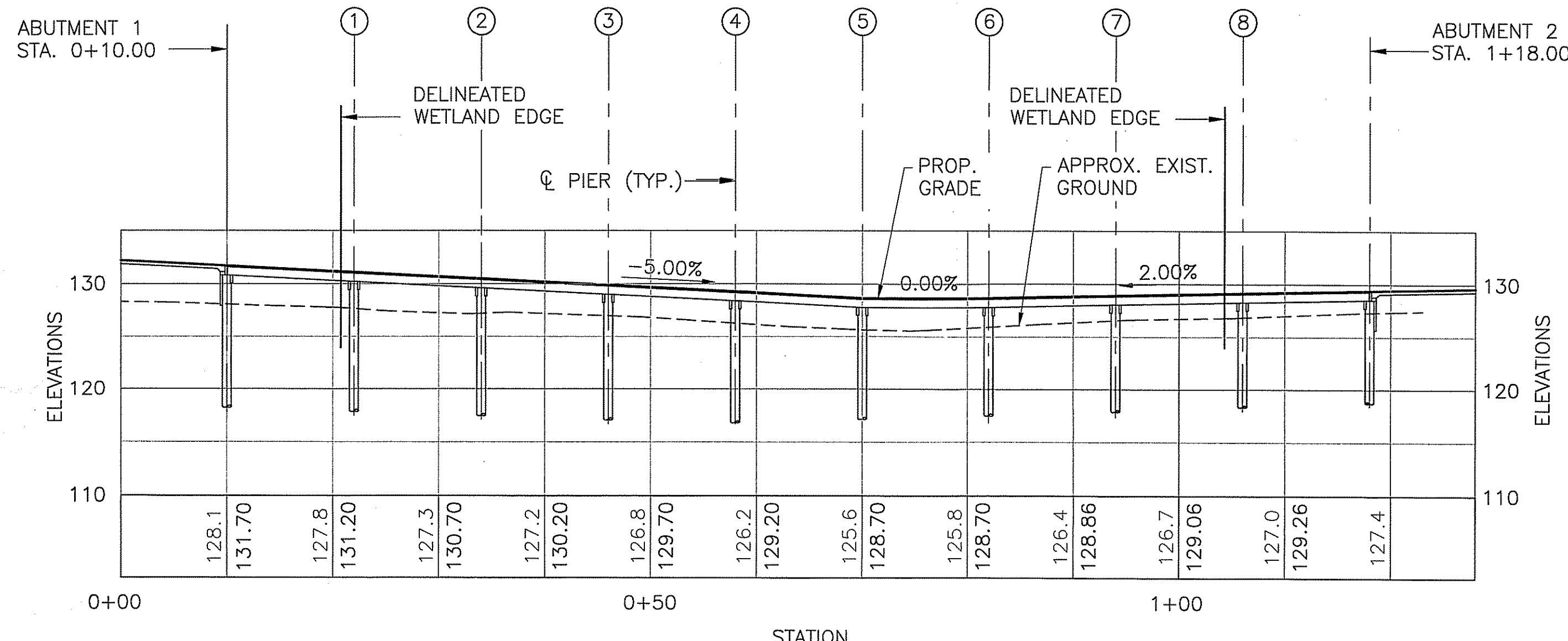
Environmental Management
JUL 15 2016
 Office of Water Resources

S-1
 Sheet 1 of 5
 Project Number
 72614.00

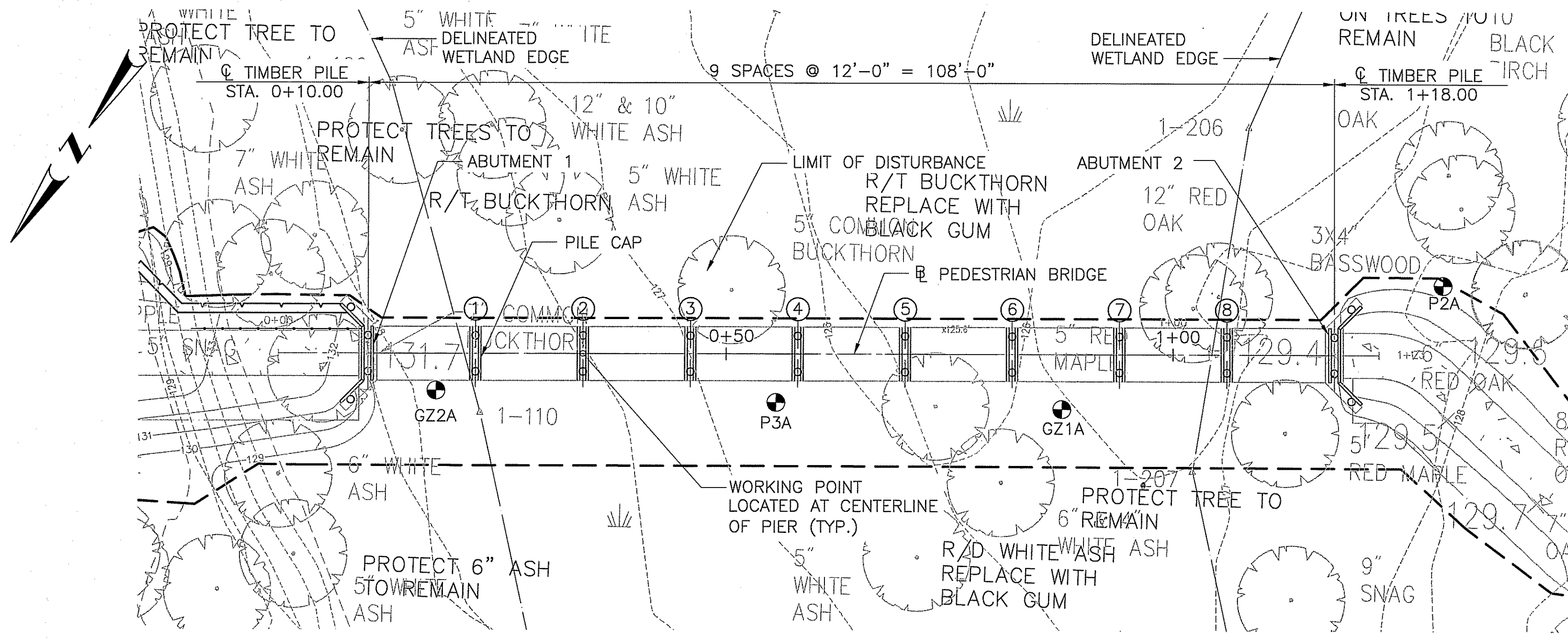
Saved Wednesday, March 30, 2016 2:05:11 PM WOLEZAL, Plotted Wednesday, March 30, 2016 2:05:40 PM Dobrzak, Vodi



GENERAL PLAN
 SCALE: 1"=10'-0"

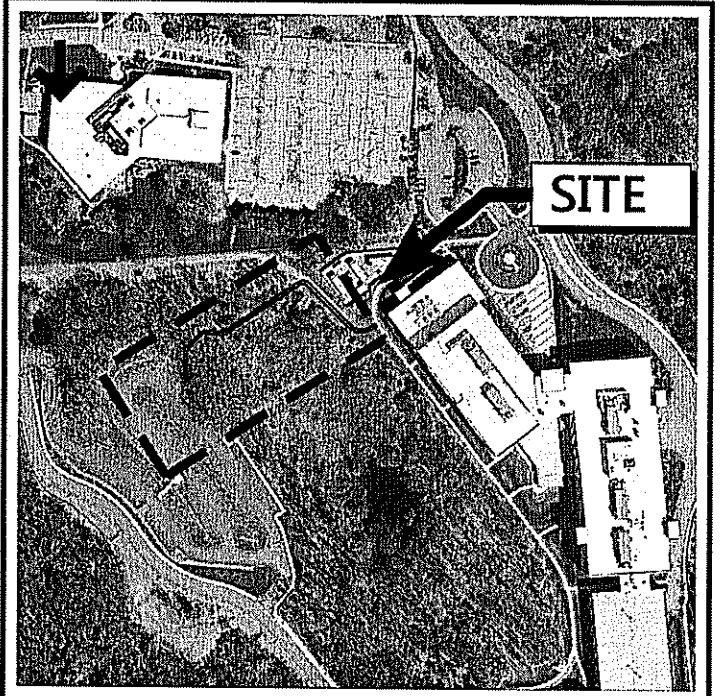


LONGITUDINAL SECTION
 SCALE: 1"=10'-0"



FOUNDATION PLAN
 SCALE: 1"=10'-0"

DEPARTMENT OF ENVIRONMENTAL MANAGEMENT
 OFFICE OF WATER RESOURCES
 FRESHWATER WETLANDS PROGRAM
 APPROVED WITH CONDITIONS
 AS SPECIFIED IN THE LETTER OF APPROVAL
 DATED OCT 05 2016 FILE # 16-0093
 NO CHANGES ALLOWED WITHOUT PRIOR APPROVAL
 APPROVED PLANS MUST BE AT CONSTRUCTION SITE



SITE PLAN

**FM Global
 Pedestrian Bridge**

270 Central Avenue
 Johnston, Rhode Island

No.	Revision	Date	Appr.

Designed by: JMR
 Checked by: AFP
 Issued for: RIDEM
 Date: April 1, 2016

LEGEND
 (P) PIER #
 (B) INDICATES LOCATION OF TEST BORINGS PERFORMED BY NEW ENGLAND BORING ON NOVEMBER 5 & 6, 2015.

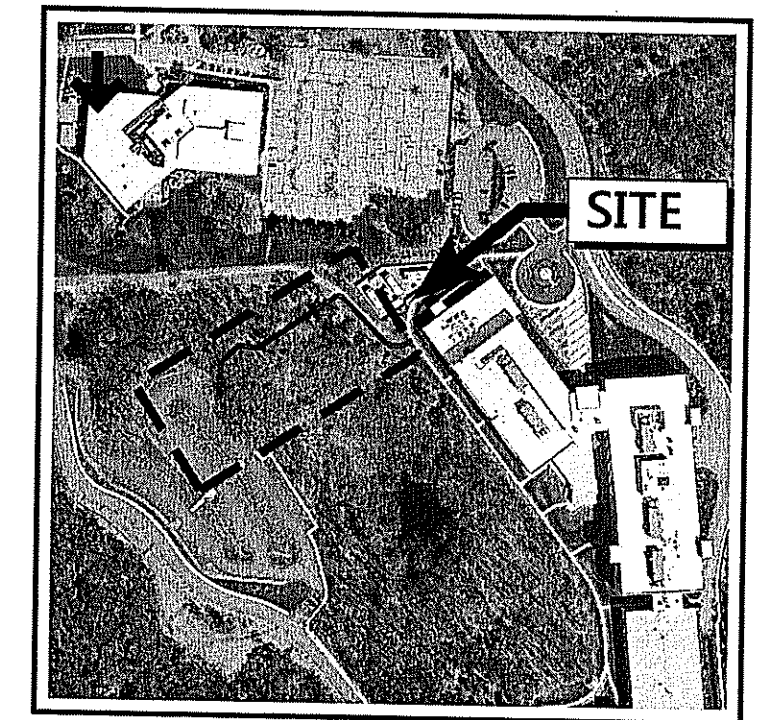
Not Approved for Construction
**General Plan,
 Longitudinal Section
 & Foundation Plan**

Environmental Management
JUL 15 2016
 Office of Water Resources

JEFFREY T. KLEIN
 No. 9718
 REGISTERED PROFESSIONAL ENGINEER (CIVIL)

S-2
 Sheet 2 of 5
 Project Number 72614.00

DEPARTMENT OF ENVIRONMENTAL MANAGEMENT
OFFICE OF WATER RESOURCES
FRESHWATER WETLANDS PROGRAM
APPROVED WITH CONDITIONS
AS SPECIFIED IN THE LETTER OF APPROVAL
DATED OCT 05 2016 FILE # 16-0093
NO CHANGES ALLOWED WITHOUT PRIOR APPROVAL
APPROVED PLANS MUST BE AT CONSTRUCTION SITE



KEY PLAN

**FM Global
Pedestrian Bridge**

270 Central Avenue
Johnston, Rhode Island

No.	Revision	Date	Appd.

Designed by: JMR Checked by: AFP
Issued for: RIDEM Date: April 1, 2016

Not Approved for Construction

**Typical Bridge
Sections & Details 2**

JEFFREY T. KLEIN
No. 9718
4/1/16
REGISTERED
PROFESSIONAL ENGINEER
(CIVIL)

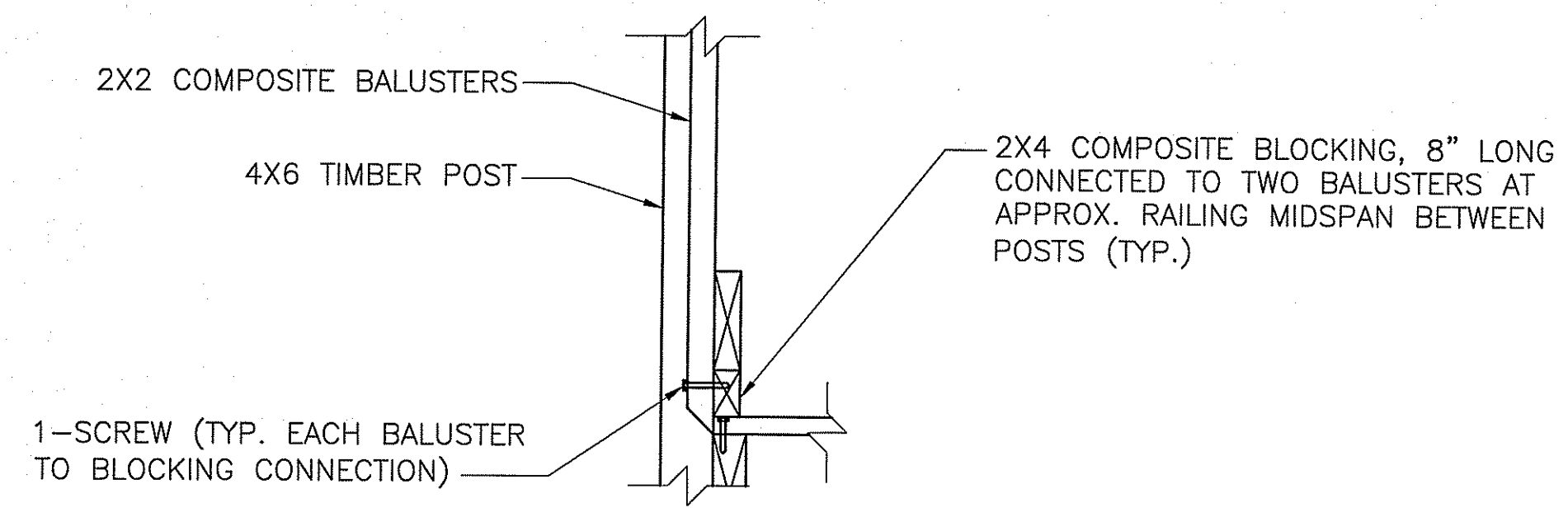
S-5

Sheet 5 of 5

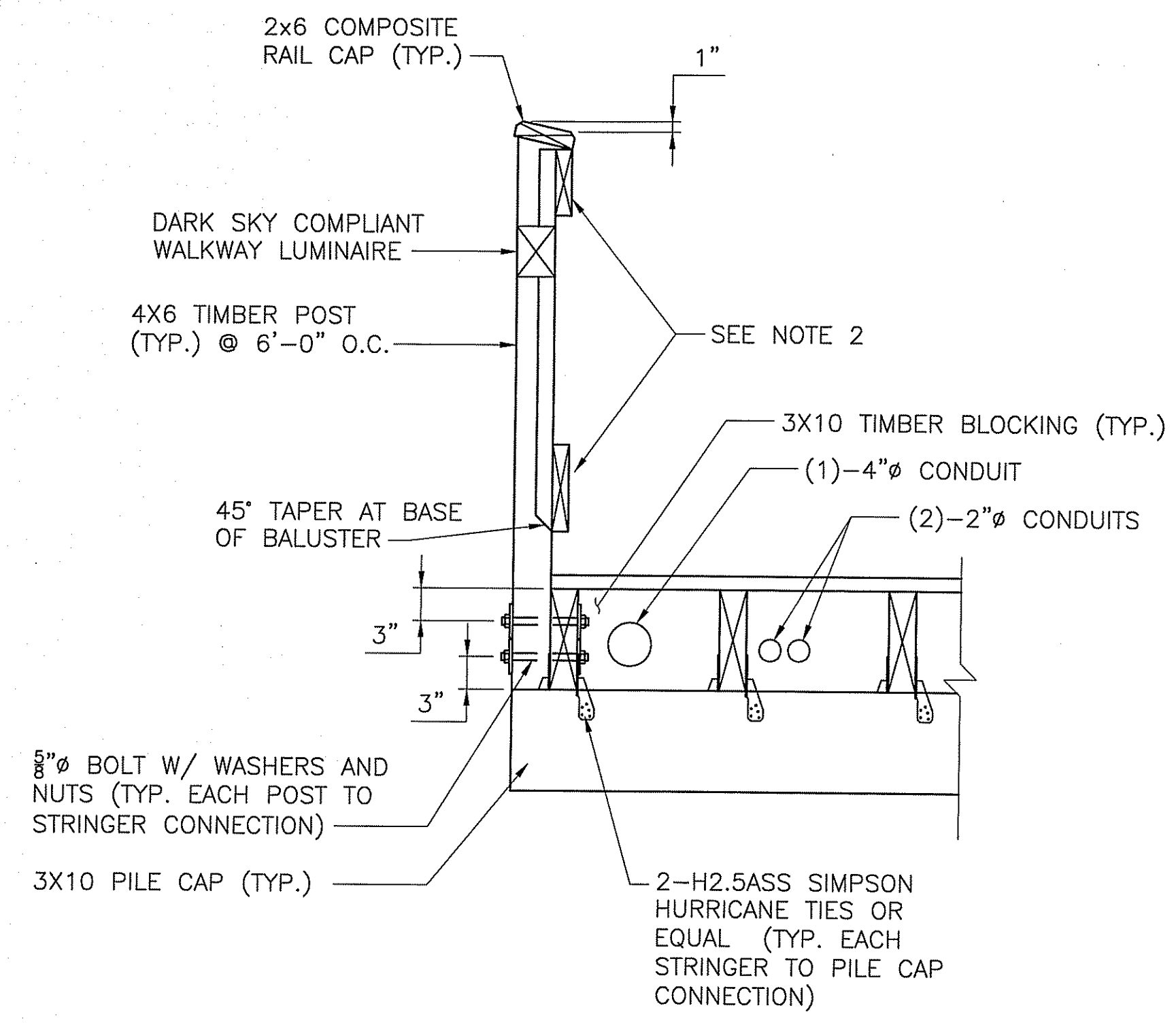
Project Number
72614.00

Environmental Management
JUL 15 2016
Office of Water Resources

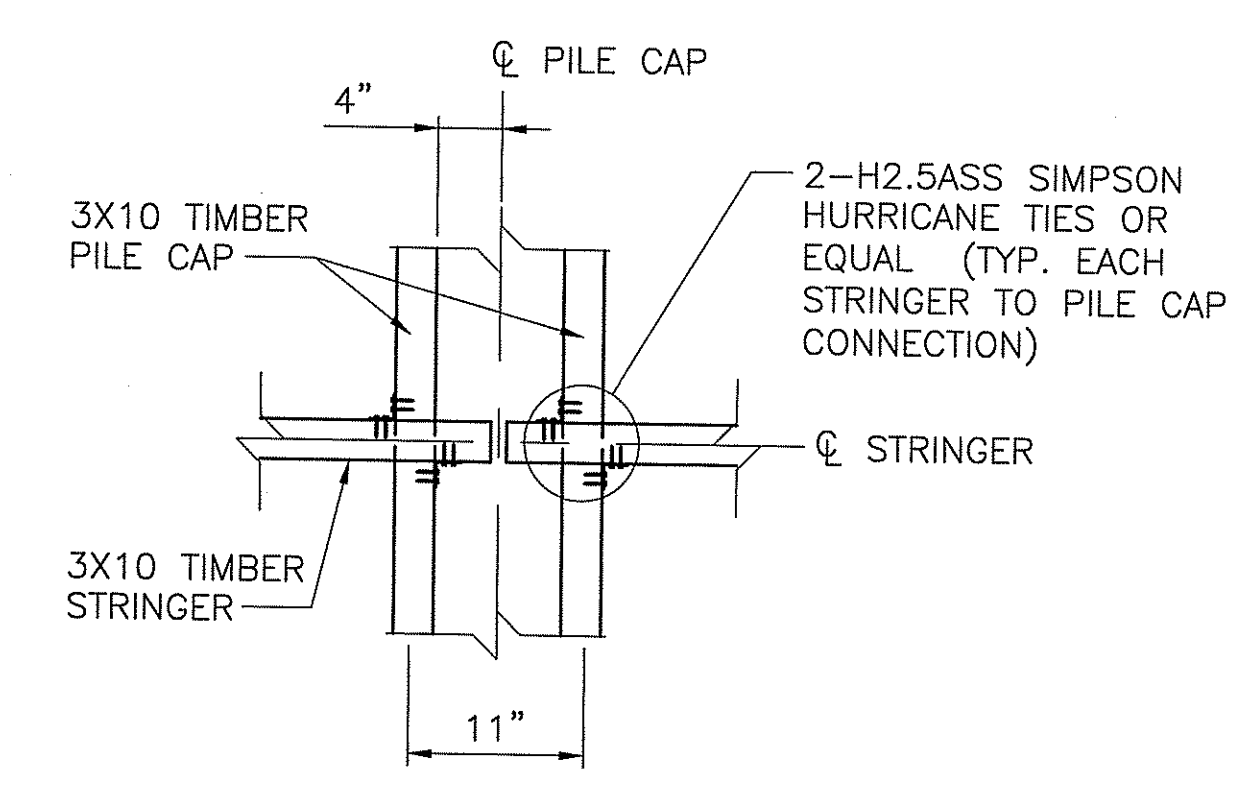
PEDESTRIAN BRIDGE — TYPICAL DETAILS
SCALE: 1" = 1'-0"



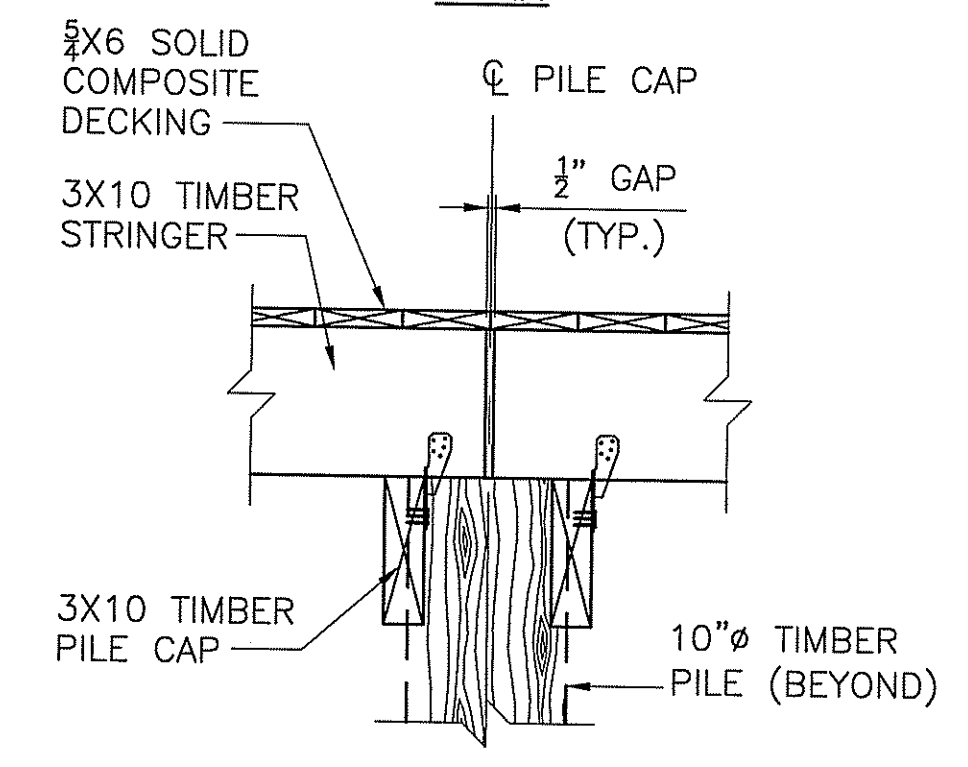
BOTTOM RAIL BLOCKING CONNECTION



RAIL POST CONNECTION

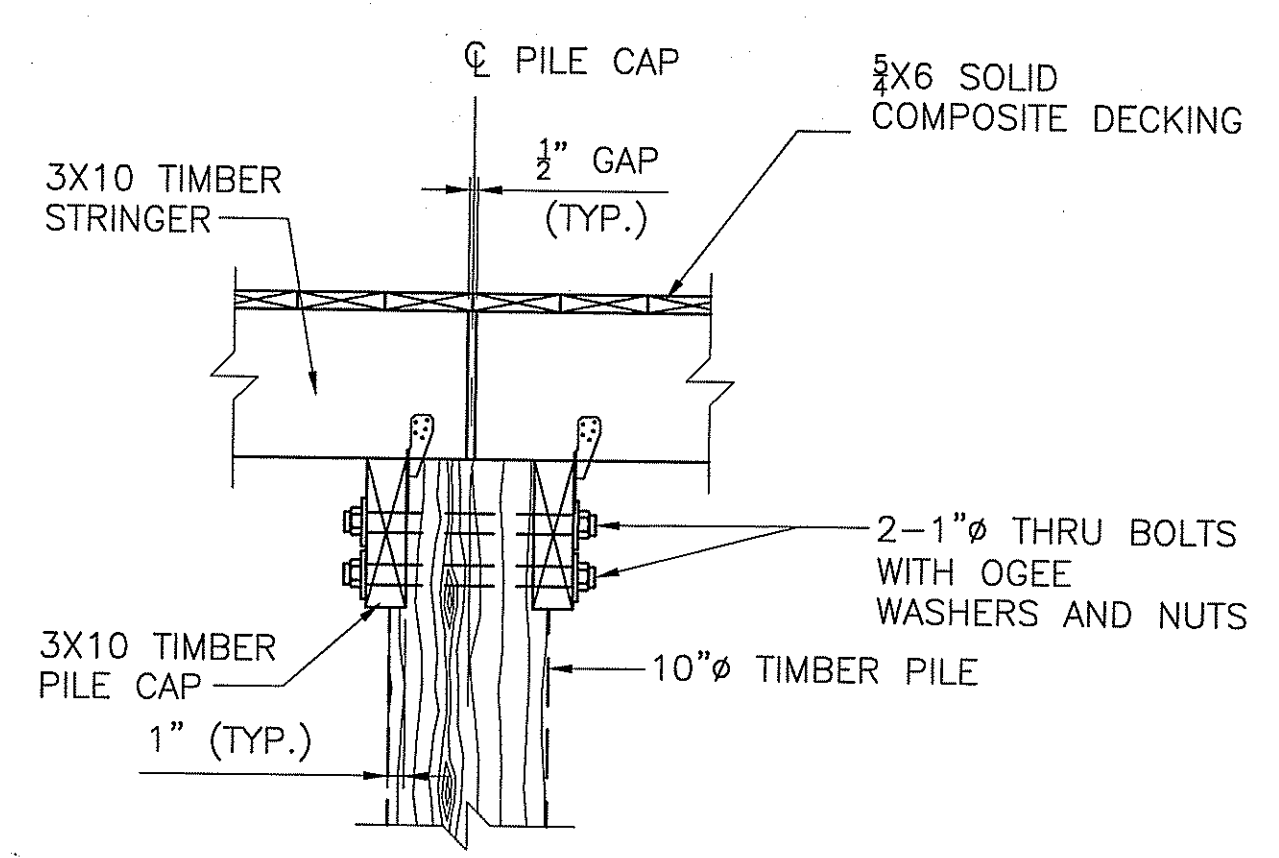


PLAN

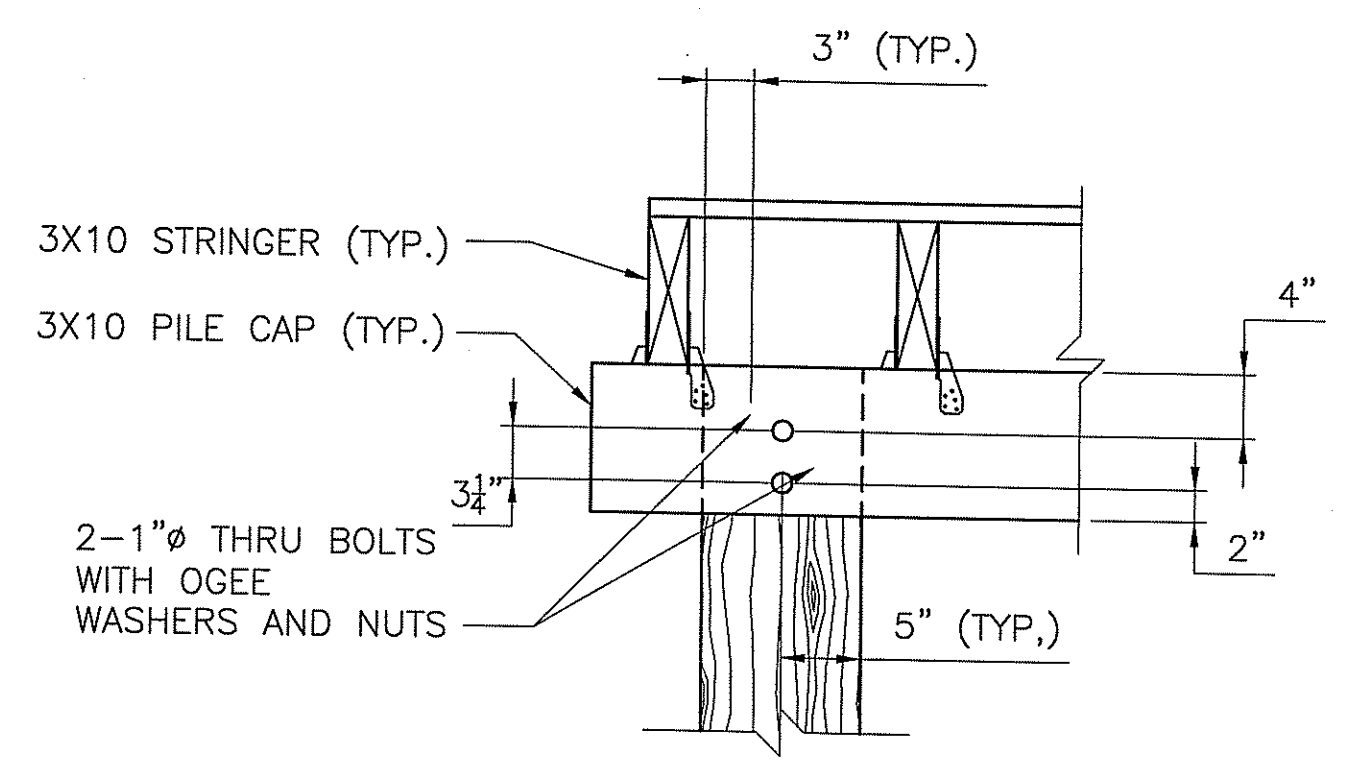


ELEVATION

STRINGER TO PILE CAP CONNECTION



ELEVATION



SECTION

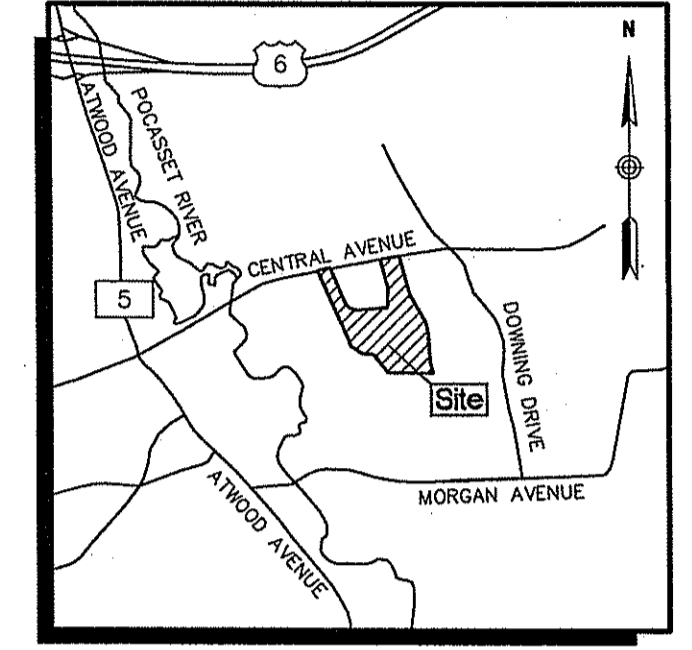
PILE CAP CONNECTION TO PILE



Vanasse Hangen Brustlin, Inc.

Transportation
Land Development
Environmental Services

1 Cedar Street
Suite 400
Providence, RI 02903
401.272.8100



LOCUS MAP
NOT TO SCALE

DEPARTMENT OF ENVIRONMENTAL MANAGEMENT
OFFICE OF WATER RESOURCES
FRESHWATER WETLANDS PROGRAM
APPROVED WITH CONDITIONS
AS SPECIFIED IN THE LETTER OF APPROVAL
DATED OCT 03 2016 FILE # 16-0093
NO CHANGES ALLOWED WITHOUT PRIOR APPROVAL
APPROVED PLANS MUST BE AT CONSTRUCTION SITE

No.	Revision	Date	Appr.

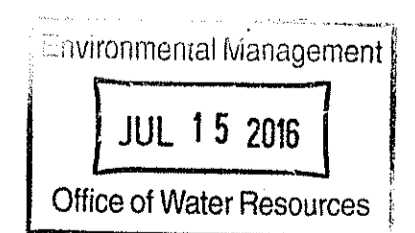
Designed by _____ Drawn by **BMP** Checked by **PMC**
CAD checked by _____ Approved by _____
Scale 1"=20' Date November 24, 2015
Project Title

**FM Global
Pedestrian Bridge**

Central Avenue
Johnston, Rhode Island
Issued for

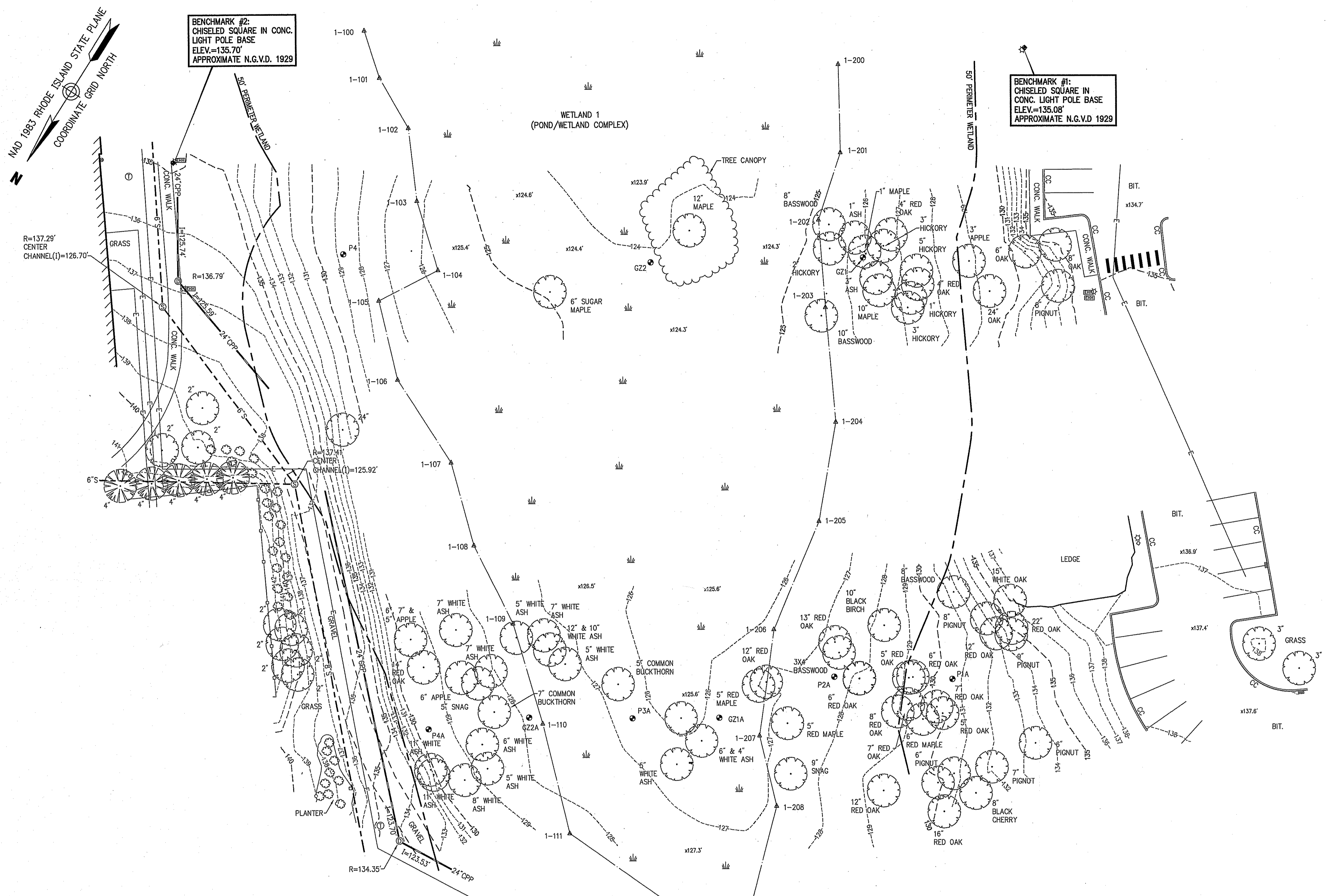
Design

Drawing Title
**Existing Conditions
Plan**



Drawing Number
Sv-1
Sheet 1 of 1
Project Number
72614.00

THIS TOPOGRAPHIC SURVEY AND PLAN CONFORM TO A CLASS III STANDARD AS ADOPTED BY THE RHODE ISLAND BOARD OF REGISTRATION FOR PROFESSIONAL LAND SURVEYORS, AND AS SUCH DOES NOT REPRESENT THIS LAND SURVEYOR'S BOUNDARY LINE OPINION
Patrick W. McCourt 11/24/15
PATRICK W. MCCOURT, P.L.S. #1964 DATE



Legend

- ⊙ DRAIN MANHOLE
- ⊙ SEWER MANHOLE
- ⊙ TELEPHONE MANHOLE
- ⊙ BORING
- ⊙ SEWER CLEAN OUT
- 1-100 Δ WETLAND FLAG
- 100.0 x SPOT ELEVATION
- [EHI] ELECTRIC HAND HOLE
- CURB
- UNDERGROUND DRAINAGE LINE
- UNDERGROUND SEWER LINE
- TREE LINE
- UNDERGROUND ELECTRIC
- EDGE OF GRAVEL
- DRAIN INLET
- WETLAND EDGE
- WETLAND BUFFER
- CC CONCRETE CURB
- BIT. BITUMINOUS PAVEMENT
- CONC. CONCRETE
- R= RIM ELEVATION
- I= INVERT ELEVATION
- ELEV. ELEVATION
- ▨ PARKING STRIPE
- DECIDUOUS TREE
- PINE TREE
- MARSH AREA
- LIGHT POLE
- DRAIN INLET
- HAND HOLE
- SHRUB/BUSH

General Notes

1. ALL ELEVATIONS ARE BASED ON APPROXIMATE N.G.V.D. 1929.
2. THE EXISTING CONDITIONS SHOWN ON THIS PLAN WERE LOCATED BY A FIELD SURVEY, CONDUCTED BY VANASSE HANGEN BRUSTLIN, INC. BETWEEN APRIL 21, 2015 & APRIL 22, 2015 AND OCTOBER 21, 2015 AND NOVEMBER 24, 2015.
3. THE UNDERGROUND UTILITIES SHOWN HAVE BEEN LOCATED FROM FIELD SURVEY INFORMATION AND EXISTING DRAWINGS. THE SURVEYOR MAKES NO GUARANTEES THAT THE UNDERGROUND UTILITIES SHOWN COMPRISE ALL SUCH UTILITIES IN THE AREA, EITHER IN-SERVICE OR ABANDONED. THE SURVEYOR FURTHER DOES NOT WARRANT THAT THE UNDERGROUND UTILITIES SHOWN ARE IN THE EXACT LOCATION INDICATED. THE SURVEYOR HAS NOT PHYSICALLY LOCATED THE UNDERGROUND UTILITIES.
4. THE LOCATIONS OF EXISTING UNDERGROUND UTILITIES ARE SHOWN IN AN APPROXIMATE WAY ONLY AND HAVE NOT BEEN INDEPENDENTLY VERIFIED BY THE OWNER OR IT'S REPRESENTATIVE. THE CONTRACTOR SHALL DETERMINE THE EXACT LOCATION OF ALL EXISTING UTILITIES BEFORE COMMENCING WORK, AND AGREES TO BE FULLY RESPONSIBLE FOR ANY AND ALL DAMAGES WHICH MIGHT BE OCCASIONED BY THE CONTRACTOR'S FAILURE TO EXACTLY LOCATE AND PRESERVE ANY AND ALL UNDERGROUND UTILITIES.

