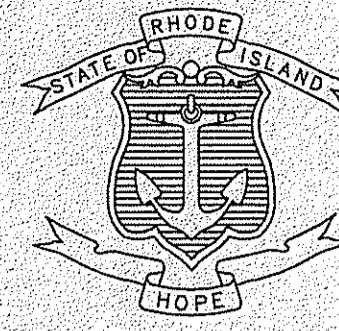


INDEX

SHEET NO.	DESCRIPTION
1	COVER SHEET
2	STANDARD PLAN SYMBOLS AND STANDARD LEGEND
3-4	STANDARD NOTES - 1&2
5	JOB SPECIFIC PLAN, SYMBOLS, LEGEND & NOTES
6	TYPICAL ROADWAY SECTIONS
7-8	GENERAL PLANS - 1&2
9-10	DRAINAGE AND UTILITY PLANS - 1&2
11-12	GRADING PLANS - 1&2
13-14	PROFILES - 1&2
15-16	LOCATION PLANS - 1&2
17-18	SIGNING AND STRIPING PLANS - 1&2
19-20	TEMP. TRAFFIC SIGNAL AND STAGING PLANS - 1&2
21-23	TYPICAL BRIDGE GENERAL NOTES - 1,2&3
24	BRIDGE LOCATION PLAN AND PROFILE
25	BRIDGE NO. 54 GENERAL PLAN
26	BRIDGE NO. 54 NORTH ABUTMENT PLAN & ELEVATION
27	BRIDGE NO. 54 SOUTH ABUTMENT PLAN & ELEVATION
28	BRIDGE NO. 54 SOUTHWEST WINGWALL PLAN, ELEVATION & SECTION
29	BRIDGE NO. 54 FRAMING PLAN
30	BRIDGE NO. 55 GENERAL PLAN
31	BRIDGE NO. 55 NORTH ABUTMENT PLAN & ELEVATION
32	BRIDGE NO. 55 SOUTH ABUTMENT PLAN & ELEVATION
33	BRIDGE NO. 55 SOUTHEAST WINGWALL PLAN & ELEVATION
34	BRIDGE NO. 55 PIER PLAN & ELEVATION
35	BRIDGE NO. 55 FRAMING PLAN
36	BRIDGE NO. 56 GENERAL PLAN
37	BRIDGE NO. 56 NORTH ABUTMENT PLAN & ELEVATION
38	BRIDGE NO. 56 SOUTH ABUTMENT PLAN & ELEVATION
39	BRIDGE NO. 56 SOUTHEAST WINGWALL PLAN & ELEVATION
40	BRIDGE NO. 56 PIER PLAN & ELEVATION
41	BRIDGE NO. 56 FRAMING PLAN
42-43	TYPICAL ABUTMENT DETAILS 1&2
44-45	TYPICAL DETAILS 1&2
46	TYPICAL PIER DETAILS
47	TYPICAL S.E. WINGWALL & APPROACH SIDEWALK DETAILS FOR BR. NO. 55 & 56
48-49	BEAM DETAILS 1&2
50	BEARING DETAILS
51	TYPICAL BRIDGE SECTIONS
52	TYPICAL PHASED DEMOLITION & CONSTRUCTION SEQUENCE
53	ANCHORED BARRIER FOR TEMPORARY TRAFFIC CONTROL
54	TYPICAL SIDEWALK AND CURB DETAILS
55	FLYING WINGWALL DETAILS
56	TYPICAL END POST DETAILS
57	MODIFIED BALDWIN FOUR BAR ORNAMENTAL RAIL
58	WALL JOINTS AND WALL DRAIN DETAILS
59	LIMITS OF STRUCTURAL EXCAVATION
60-65	CROSS SECTIONS NO. 1-6

STATE OF RHODE ISLAND



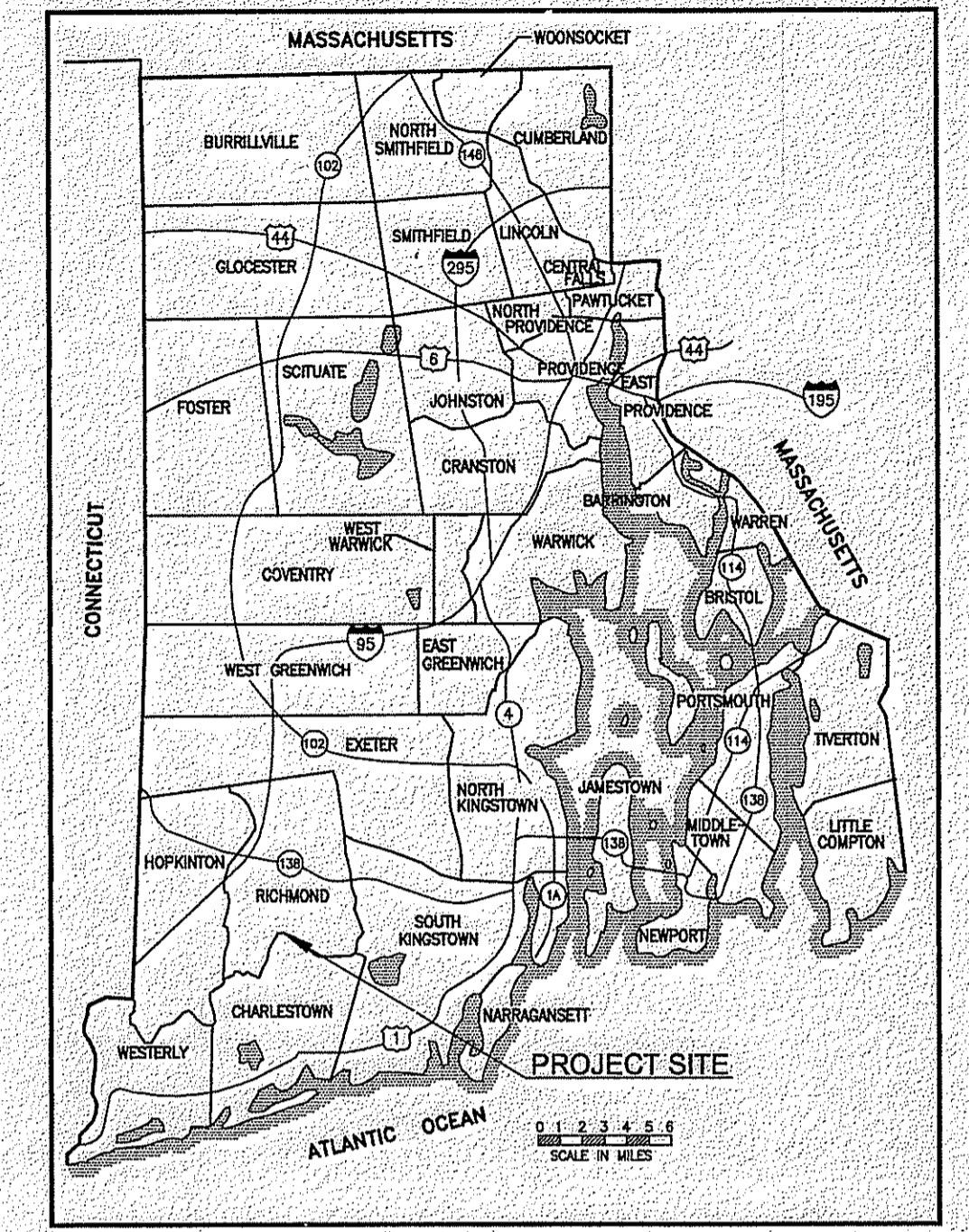
DEPARTMENT OF TRANSPORTATION

PLAN, PROFILE AND SECTIONS OF PROPOSED STATE HIGHWAY

REPLACEMENT OF 1st, 2nd and 3rd CAROLINA BRIDGES NUMBERS 54, 55, & 56

CAROLINA BACK ROAD AND CAROLINA MAIN STREET (ROUTE 112) OVER MILL CANAL & PAWCATUCK RIVER

TOWNS OF CHARLESTOWN AND RICHMOND COUNTY OF WASHINGTON



LOCATION MAP

R.I. CONTRACT NO. 2001-EB-004 F.A. PROJECT NO. N/A

PAVEMENT STRUCTURE

- 2" BITUMINOUS CONCRETE SURFACE COURSE - CLASS 9.5 HMA
- 3" BITUMINOUS CONCRETE BASE COURSE - CLASS 12.5 HMA
- 12" GRAVEL BORROW SUBBASE COURSE

NOV 1 2016 FILE # 16-015

DESIGN	DESIGNATION
AADT (2008)	3,500 V.P.D.
AADT (2028)	4,165 V.P.D.
D	50/50
K	9.3%
T	2.8%
DDHV	163 V.P.H.
DHV	326 V.P.H.
DESIGN SPEED	35 M.P.H.

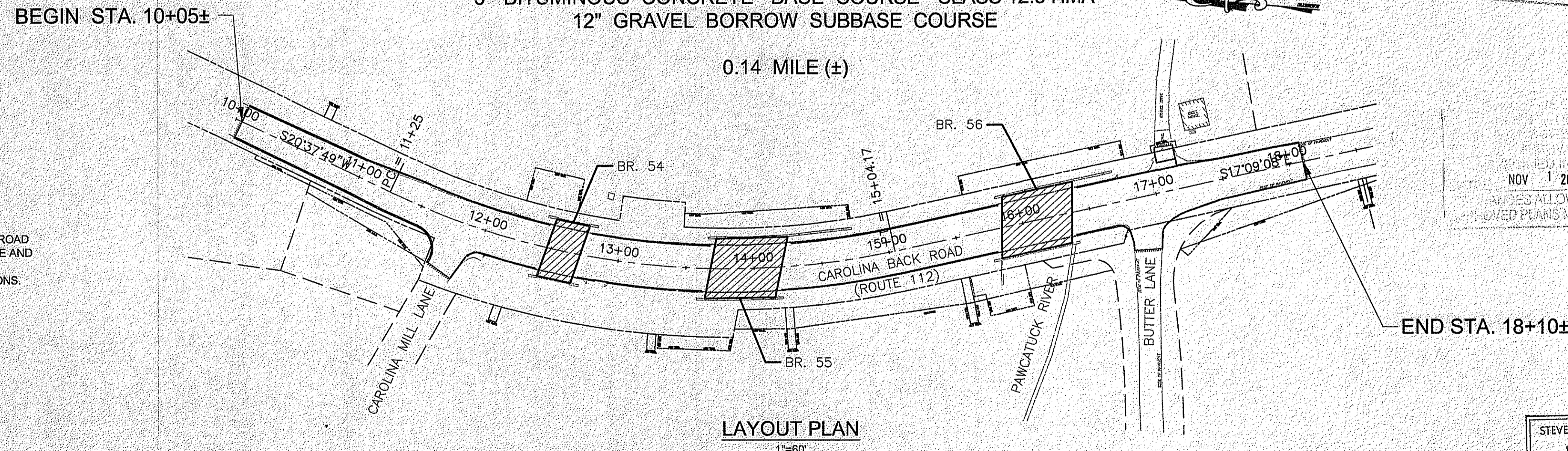
HURRICANE EVACUATION ROUTE

This project includes work on a designated Hurricane Evacuation and Diversionary Route as follows:
 - Route 112 - Carolina Back Road, throughout project limits.

NOV 1 2016 FILE # 16-015

REVISED RIDEM SUBMISSION
 AUGUST 31, 2016

R.I. STANDARD SPECIFICATIONS AND STANDARD DETAILS
 SPECIFICATIONS TO GOVERN THIS PROJECT ARE THE R.I. STANDARD SPECIFICATIONS FOR ROAD AND BRIDGE CONSTRUCTION, AMENDED AUGUST 2013, WITH ALL REVISIONS AND THE STATE AND FEDERAL SPECIAL PROVISIONS INCLUDED IN THE CONTRACT DOCUMENTS. STANDARD DETAILS FOR THIS PROJECT ARE R.I. STANDARD DETAILS, 1998 EDITION, WITH ALL REVISIONS.



LAYOUT PLAN
 1"=60'

SCALES OF DRAWINGS

Plans	1 inch = 20 feet
Profiles	1 inch = 20 feet Horizontal
Profiles	1 inch = 4 feet Vertical
Cross Sections	1 inch = 4 feet Horizontal
Cross Sections	1 inch = 4 feet Vertical
Bridge Plans	As Noted

BASE OF LEVELS

Vertical Datum Used: NGVD 29

Horizontal Datum and Epoch Used: NAD 27 (2011) (2010.00)

Environmental Management
 SEP 15 2016
 Office of Water Resources

STEVEN B. GAROFALO
 No. 4155
 REGISTERED PROFESSIONAL ENGINEER
 8/31/16

GAROFALO
 GAROFALO & ASSOCIATES, INC.
 85 CORLISS STREET \ P.O. BOX 6145
 PROVIDENCE, RHODE ISLAND 02940

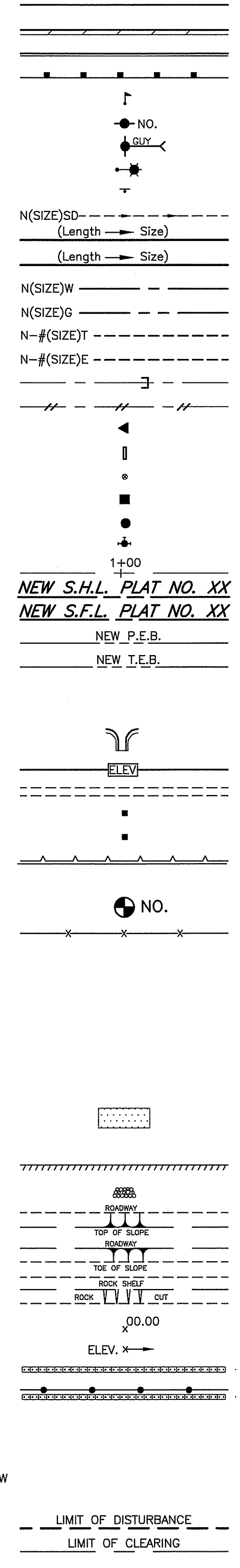
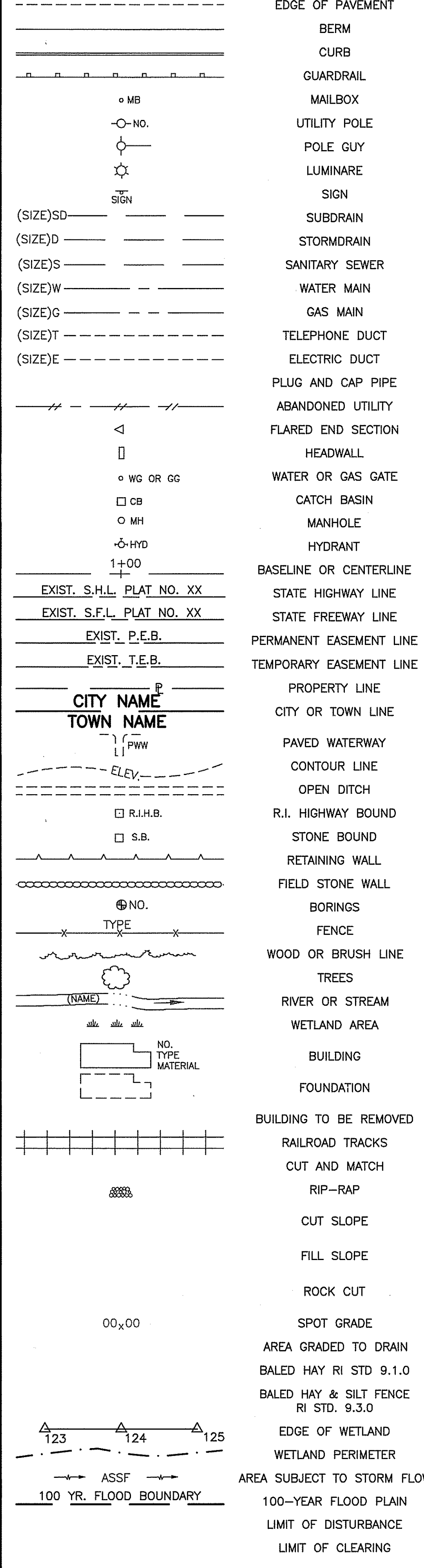
Contract Number 2011-xx-xxx
 Number of Sheet 1
 Total Sheets 26

R.I. DEPARTMENT OF TRANSPORTATION	
APPROVED	
DEPUTY CHIEF ENGINEER	DATE
APPROVED	
CHIEF ENGINEER	DATE
APPROVED	
DIRECTOR	DATE
DEPARTMENT OF TRANSPORTATION FEDERAL HIGHWAY ADMINISTRATION	
APPROVED	
DIVISION ADMINISTRATOR	DATE

FED. ROAD DIV. NO.	STATE	FEDERAL AID PROJECT NO.	FISCAL YEAR	SHEET NO.	TOTAL SHEETS
1	RI	XX	2016	2	65

EXISTING

NEW



1.1.0	UNDERDRAIN	7.4.2	GRANITE TRANSITION CURB (VERTICAL FACE TO SLOPE FACE)	AB	ADJUST CATCH BASIN TO GRADE
1.3.0	CONCRETE CONNECTING COLLAR	7.5.0	BITUMINOUS CONCRETE LIP CURB	ABM	ADJUST CATCH BASIN TO MANHOLE
2.1.0	CONCRETE HEADWALLS FOR PIPE CULVERTS	7.5.1A	BITUMINOUS BERM (CONSTRUCTION METHOD A)	AC	ADJUST CURB STOP TO GRADE
2.2.0	STANDARD HEADWALLS FOR MULTIPLE 3'-6" TO 7'-0" PIPE CULVERTS	7.5.1B	BITUMINOUS BERM (CONSTRUCTION METHOD B)	AD	ADJUST DRAINAGE MANHOLE TO GRADE
2.3.0 (DIA.)	PRECAST CONCRETE FLARED END SECTION	7.6.0	CURB SETTING DETAIL	AE	ADJUST ELECTRIC MANHOLE TO GRADE
3.2.0	BRICK/SOLID BLOCK 4'-0" ROUND MANHOLE	8.2.0	BITUMINOUS CONCRETE DITCH	AFC	ADJUST FRAME AND COVER TO GRADE
3.2.1 (DIA.)	BRICK/SOLID BLOCK 5'-0" OR 6'-0" ROUND MANHOLE	8.3.0	RIP-RAP DITCH	AFG	ADJUST FRAME AND GRATE TO GRADE
3.3.0	BRICK/SOLID BLOCK TYPE "D" SQUARE CATCH BASIN	8.4.0	PAVED WATERWAY	AG	ADJUST GAS GATE BOX TO GRADE
3.3.2	BRICK/SOLID BLOCK TYPE "F" SQUARE CATCH BASIN	9.1.0	BALED HAY EROSION CHECK	AHH	ADJUST HANDHOLE TO GRADE
3.3.3	SOLID BLOCK FLUSH SQUARE CATCH BASIN	9.2.0	SILT FENCE DETAIL	AS	ADJUST SANITARY SEWER MANHOLE TO GRADE
3.4.0	BRICK/SOLID BLOCK TYPE "D" ROUND CATCH BASIN	9.3.0	BALED HAY DITCH EROSION CHECK AND SILT FENCE COMBINED	AT	ADJUST TELEPHONE MANHOLE TO GRADE
3.4.1	BRICK/SOLID BLOCK ROUND CATCH BASIN WITH GUTTER INLET	9.4.0	BALED HAY DITCH AND SWALE EROSION CHECK	AW	ADJUST WATER GATE BOX TO GRADE
3.4.2	BRICK/SOLID BLOCK TYPE "F" ROUND CATCH BASIN	9.5.0	LOG AND HAY CHECK DAM	BCD	BITUMINOUS CONCRETE DRIVEWAY
3.4.3	BRICK/SOLID BLOCK TYPE "R" CATCH BASIN	9.7.0	DEWATERING BASIN		3" BITUMINOUS CONCRETE TYPE 1-2
3.4.4	SOLID BLOCK FLUSH ROUND CATCH BASIN	9.8.0	BALED HAY CATCH BASIN INLET PROTECTION		8" GRAVEL BORROW SUBBASE COURSE
3.4.5 (DIA.)	BRICK/SOLID BLOCK 5'-0" OR 6'-0" ROUND CATCH BASIN	9.9.0	CONSTRUCTION ACCESS	BPS	BUILD NEW STRUCTURE OVER EXISTING PIPE
3.5.0	SOLID BLOCK SHALLOW TYPE "F" SQUARE CATCH BASIN	10.1.0	WET STONE MASONRY RETAINING WALL	CCB	CLEAN CATCH BASIN
3.5.1 (SIZE)	SOLID BLOCK SHALLOW 5'-0" OR 6'-0" SQUARE CATCH BASIN	10.2.0	RUBBLE MASONRY WALL	CCP	CUT AND CAP PIPE WITH RESTRAINT (ALL SIZES)
3.6.0	BRICK/SOLID BLOCK DROP INLET	10.3.0	CONCRETE RETAINING WALL	CFP	CLEAN AND FLUSH PIPE
3.7.0 (DIA.)	BRICK/SOLID BLOCK ROUND MANHOLE OR CATCH BASIN GREATER THAN 12'-0"	10.4.0	STONE MASONRY STEPS	CG	CLEARING AND GRUBBING
4.2.0	PRECAST 4'-0" ROUND MANHOLE	14.1.0	CONCRETE HIGHWAY BOUND	CMH	CLEAN MANHOLE
4.2.1	PRECAST 5'-0" ROUND MANHOLE	15.1.0	POST AND MOUNTINGS FOR RURAL MAILBOX	CP (DEPTH)	COLD PLANE
4.2.2	PRECAST 6'-0" ROUND MANHOLE	15.2.0 (NO.)	POST AND MULTIPLE MOUNTINGS FOR RURAL MAILBOXES	CPP	CUT AND PLUG PIPE (ALL TYPES, ALL SIZES)
4.3.0 (SIZE)	PRECAST 4'-0" OR 6'-0" SQUARE MANHOLE OR CATCH BASIN	18.2.0	PRECAST TYPE "A" HANDHOLE	DB	REMOVE AND DISPOSE BITUMINOUS CURB
4.4.0 (DIA.)	PRECAST 4'-0", 5'-0", OR 6'-0" ROUND CATCH BASIN	18.2.2	HEAVY DUTY TYPE "H" HANDHOLE	DC	REMOVE AND DISPOSE CONCRETE CURB
4.5.0	PRECAST CONCRETE DROP INLET	18.3.0	ALUMINUM LIGHTING STANDARDS	DCB	REMOVE AND DISPOSE CATCH BASIN
4.5.1	PRECAST CONCRETE DROP INLET LATERAL OUTLET	20.2.0	BI-DIRECTIONAL CONTROL DEVICE	DDI	REMOVE AND DISPOSE DROP INLET
4.5.2	PRECAST CONCRETE DROP INLET LONGITUDINAL OUTLET	24.6.1	STREET SIGN MOUNTING DETAIL	DF	REMOVE AND DISPOSE FENCE
5.3.0	CATCH BASIN AND MANHOLE STEP	26.2.0	POLYETHYLENE DRUM WITH MARKINGS	DFC	REMOVE AND DISPOSE FRAME AND COVER
5.4.0	CONCRETE COLLARS	26.3.0	PVC PLASTIC PIPE TYPE III BARRICADE	DFE	REMOVE AND DISPOSE FLARED END SECTION
6.1.0	LIGHT-DUTY SQUARE FRAME AND ROUND COVER	31.1.0	CHAIN LINK FENCE 3'-0" TO 4'-0"	DFG	REMOVE AND DISPOSE FRAME AND GRATE
6.1.1	HEAVY DUTY SQUARE FRAME AND ROUND COVER	31.2.0	CHAIN LINK FENCE 5'-0" TO 6'-0"	DFH	REMOVE AND DISPOSE FIRE HYDRANT
6.2.0	LIGHT-DUTY ROUND FRAME AND COVER	31.2.1	CHAIN LINK FENCE 5'-0" TO 6'-0" INTERMEDIATE POST	DFP	REMOVE AND DISPOSE FLEXIBLE PAVEMENT
6.2.1	HEAVY-DUTY ROUND FRAME AND COVER	31.3.0	WOVEN WIRE RIGHT-OF-WAY FENCE (STEEL POST)	DG	REMOVE AND DISPOSE GUARDRAIL
6.3.0	SQUARE FRAME AND GRATE	34.1.0	TYPICAL GUARDRAIL INSTALLATION	DH	REMOVE AND DISPOSE HEADWALL
6.3.1	SQUARE FRAME AND GRATE	34.2.0	STEEL BEAM GUARDRAIL	DHB	REMOVE AND DISPOSE HIGHWAY BOUND
6.3.2	SQUARE FRAME AND GRATE (BICYCLE SAFE)	34.2.1	STEEL BEAM GUARDRAIL DETAILS	DHH	REMOVE AND DISPOSE HANDHOLE
6.3.3	HIGH CAPACITY FRAME AND GRATE	34.2.2	STEEL BEAM GUARDRAIL DOUBLE FACED ASSEMBLY	DL	REMOVE AND DISPOSE LIGHT AND FOUNDATION
6.3.4	HIGH CAPACITY FRAME AND GRATE (BICYCLE SAFE)	34.2.3	STEEL BEAM GUARDRAIL FIXTURES	DMB	REMOVE AND DISPOSE MEDIAN BARRIER
6.4.0	ROUND FRAME AND GRATE	34.2.5	STEEL BEAM GUARDRAIL REFLECTORIZED TRIANGULAR DELINEATOR	DMH	REMOVE AND DISPOSE MANHOLE
7.1.0S	PRECAST CONCRETE CURB (STRAIGHT)	34.3.1	GUARDRAIL END SECTION	DMM	REMOVE AND DISPOSE MEDIAN MARKER
7.1.0C	PRECAST CONCRETE CURB (CIRCULAR)	34.3.2	TERMINAL END SECTION (SINGLE FACE)	DOW	REMOVE AND DISPOSE OBSERVATION WELL
7.1.1	3'-0" PRECAST CONCRETE TRANSITION CURB	34.3.3	ANCHORAGE DETAILS APPROACH END SECTION	DP	REMOVE AND DISPOSE PIPE
7.1.2	6'-0" PRECAST CONCRETE TRANSITION CURB	34.3.4	ANCHORAGE DETAILS TRAILING END SECTION	DPB	REMOVE AND DISPOSE PAVEMENT AND RIGID BASE
7.1.4	PRECAST 2'-0" RADIUS CORNER	34.4.0	STEEL BACKED TIMBER GUARDRAIL	DRB	REMOVE AND DISPOSE RIGID BASE
7.1.5	PRECAST CONCRETE INLET STONE (FOR SQUARE CATCH BASIN)	34.4.1	STEEL BACKED TIMBER GUARDRAIL TERMINAL SECTION-TYPE 1	DS	REMOVE AND DISPOSE SIGN
7.1.6	PRECAST CONCRETE INLET STONE (FOR ROUND CATCH BASIN)	40.1.0	DOUBLE-FACED PRECAST MEDIAN BARRIER	DSS	REMOVE AND DISPOSE TRAFFIC SIGNAL SYSTEM
7.1.7	PRECAST CONCRETE APRON STONE (FOR SQUARE CATCH BASIN)	40.2.0	SINGLE-FACED PRECAST MEDIAN BARRIER	DSW	REMOVE AND DISPOSE SIDEWALK
7.1.8	PRECAST CONCRETE APRON STONE (FOR ROUND CATCH BASIN)	40.2.1	SINGLE-FACED PRECAST MEDIAN BARRIER	DTD	REMOVE AND DISPOSE TELEPHONE DUCT BANKS
7.2.0S	PRECAST CONCRETE SLOPED FACE CURB (STRAIGHT)	40.3.0	PRECAST MEDIAN BARRIER TRANSITION UNIT	DUP	REMOVE AND DISPOSE UTILITY POLE
7.2.0C	PRECAST CONCRETE SLOPED FACE CURB (CIRCULAR)	40.5.0	PRECAST MEDIAN BARRIER FOR TEMPORARY TRAFFIC CONTROL	DWW	REMOVE AND DISPOSE PAVED WATERWAY
7.2.1	PRECAST CONCRETE SLOPED FACE TRANSITION CURB	43.1.0	CEMENT CONCRETE SIDEWALK	FF	FILTER FABRIC RIPRAP FLARED END UNDERLAYMENT
7.2.2	PRECAST CONCRETE TRANSITION CURB (VERTICAL FACE TO SLOPED FACE)	43.2.0	BITUMINOUS CONCRETE SIDEWALK	GET	FLARED GUARDRAIL END TREATMENT
7.3.0S	GRANITE CURB (STRAIGHT)	43.3.0	WHEELCHAIR RAMP	IA	IMPACT ATTENUATOR
7.3.0C	GRANITE CURB (CIRCULAR)	43.3.1	WHEELCHAIR RAMP FOR LIMITED RIGHT-OF-WAY AREAS	IDL	IMPERVIOUS DITCH LINER
7.3.1	3'-0" GRANITE TRANSITION CURB	43.4.0	DRIVEWAY DEVELOPMENT FOR 3'-0" TRANSITION CURB	LOD	LIMIT OF DISTURBANCE
7.3.2	6'-0" GRANITE TRANSITION CURB	43.4.1	DRIVEWAY DEVELOPMENT FOR 6'-0" TRANSITION CURB	LOR	LIMIT OF REGRADING
7.3.3	GRANITE WHEELCHAIR RAMP TRANSITION CURB	43.5.0	CEMENT CONCRETE DRIVEWAYS	LS	4" LOAM AND SEED
7.3.4	GRANITE 2'-0" RADIUS CORNER	48.1.0	DETECTABLE WARNING SYSTEM		
7.3.5	GRANITE INLET STONE (FOR SQUARE CATCH BASIN)	51.1.0	TREE PROTECTION DEVICE		
7.3.6	GRANITE INLET STONE (FOR ROUND CATCH BASIN)	51.1.1	DRIP LINE TREE PROTECTION DEVICE FOR EXISTING TREES		
7.3.7	GRANITE APRON STONE (FOR SQUARE CATCH BASIN)	51.2.0	SHRUB PROTECTION DEVICE		
7.3.8	GRANITE APRON STONE (FOR ROUND CATCH BASIN)	51.3.0	TREE WELL		
7.4.0	GRANITE SLOPED FACE CURB	51.4.0	TREE WALL		
7.4.1	GRANITE SLOPED FACE TRANSITION CURB				

7.4.2	GRANITE TRANSITION CURB (VERTICAL FACE TO SLOPE FACE)	AB	ADJUST CATCH BASIN TO GRADE
7.5.0	BITUMINOUS CONCRETE LIP CURB	ABM	ADJUST CATCH BASIN TO MANHOLE
7.5.1A	BITUMINOUS BERM (CONSTRUCTION METHOD A)	AC	ADJUST CURB STOP TO GRADE
7.5.1B	BITUMINOUS BERM (CONSTRUCTION METHOD B)	AD	ADJUST DRAINAGE MANHOLE TO GRADE
7.6.0	CURB SETTING DETAIL	AE	ADJUST ELECTRIC MANHOLE TO GRADE
8.2.0	BITUMINOUS CONCRETE DITCH	AFC	ADJUST FRAME AND COVER TO GRADE
8.3.0	RIP-RAP DITCH	AFG	ADJUST FRAME AND GRATE TO GRADE
8.4.0	PAVED WATERWAY	AG	ADJUST GAS GATE BOX TO GRADE
9.1.0	BALED HAY EROSION CHECK	AHH	ADJUST HANDHOLE TO GRADE
9.2.0	SILT FENCE DETAIL	AS	ADJUST SANITARY SEWER MANHOLE TO GRADE
9.3.0	BALED HAY DITCH EROSION CHECK AND SILT FENCE COMBINED	AT	ADJUST TELEPHONE MANHOLE TO GRADE
9.4.0	BALED HAY DITCH AND SWALE EROSION CHECK	AW	ADJUST WATER GATE BOX TO GRADE
9.5.0	LOG AND HAY CHECK DAM	BCD	BITUMINOUS CONCRETE DRIVEWAY
9.7.0	DEWATERING BASIN		3" BITUMINOUS CONCRETE TYPE 1-2
9.8.0	BALED HAY CATCH BASIN INLET PROTECTION		8" GRAVEL BORROW SUBBASE COURSE
9.9.0	CONSTRUCTION ACCESS	BPS	BUILD NEW STRUCTURE OVER EXISTING PIPE
10.1.0	WET STONE MASONRY RETAINING WALL	CCB	CLEAN CATCH BASIN
10.2.0	RUBBLE MASONRY WALL	CCP	CUT AND CAP PIPE WITH RESTRAINT (ALL SIZES)
10.3.0	CONCRETE RETAINING WALL	CFP	CLEAN AND FLUSH PIPE
10.4.0	STONE MASONRY STEPS	CG	CLEARING AND GRUBBING
14.1.0	CONCRETE HIGHWAY BOUND	CMH	CLEAN MANHOLE
15.1.0	POST AND MOUNTINGS FOR RURAL MAILBOX	CP (DEPTH)	COLD PLANE
15.2.0 (NO.)	POST AND MULTIPLE MOUNTINGS FOR RURAL MAILBOXES	CPP	CUT AND PLUG PIPE (ALL TYPES, ALL SIZES)
18.2.0	PRECAST TYPE "A" HANDHOLE	DB	REMOVE AND DISPOSE BITUMINOUS CURB
18.2.2	HEAVY DUTY TYPE "H" HANDHOLE	DC	REMOVE AND DISPOSE CONCRETE CURB
18.3.0	ALUMINUM LIGHTING STANDARDS	DCB	REMOVE AND DISPOSE CATCH BASIN
20.2.0	BI-DIRECTIONAL CONTROL DEVICE	DDI	REMOVE AND DISPOSE DROP INLET
24.6.1	STREET SIGN MOUNTING DETAIL	DF	REMOVE AND DISPOSE FENCE
26.2.0	POLYETHYLENE DRUM WITH MARKINGS	DFC	REMOVE AND DISPOSE FRAME AND COVER
26.3.0	PVC PLASTIC PIPE TYPE III BARRICADE	DFE	REMOVE AND DISPOSE FLARED END SECTION
31.1.0	CHAIN LINK FENCE 3'-0" TO 4'-0"	DFG	REMOVE AND DISPOSE FRAME AND GRATE
31.2.0	CHAIN LINK FENCE 5'-0" TO 6'-0"	DFH	REMOVE AND DISPOSE FIRE HYDRANT
31.2.1	CHAIN LINK FENCE 5'-0" TO 6'-0" INTERMEDIATE POST	DFP	REMOVE AND DISPOSE FLEXIBLE PAVEMENT
31.3.0	WOVEN WIRE RIGHT-OF-WAY FENCE (STEEL POST)	DG	REMOVE AND DISPOSE GUARDRAIL
34.1.0	TYPICAL GUARDRAIL INSTALLATION	DH	REMOVE AND DISPOSE HEADWALL
34.2.0	STEEL BEAM GUARDRAIL	DHB	REMOVE AND DISPOSE HIGHWAY BOUND
34.2.1	STEEL BEAM GUARDRAIL DETAILS	DHH	REMOVE AND DISPOSE HANDHOLE
34.2.2	STEEL BEAM GUARDRAIL DOUBLE FACED ASSEMBLY	DL	REMOVE AND DISPOSE LIGHT AND FOUNDATION
34.2.3	STEEL BEAM GUARDRAIL FIXTURES	DMB	REMOVE AND DISPOSE MEDIAN BARRIER
34.2.5	STEEL BEAM GUARDRAIL REFLECTORIZED TRIANGULAR DELINEATOR	DMH	REMOVE AND DISPOSE MANHOLE
34.3.1	GUARDRAIL END SECTION	DMM	REMOVE AND DISPOSE MEDIAN MARKER
34.3.2	TERMINAL END SECTION (SINGLE FACE)	DOW	REMOVE AND DISPOSE OBSERVATION WELL
34.3.3	ANCHORAGE DETAILS APPROACH END SECTION	DP	REMOVE AND DISPOSE PIPE
34.3.4	ANCHORAGE DETAILS TRAILING END SECTION	DPB	REMOVE AND DISPOSE PAVEMENT AND RIGID BASE
34.4.0	STEEL BACKED TIMBER GUARDRAIL	DRB	REMOVE AND DISPOSE RIGID BASE
34.4.1	STEEL BACKED TIMBER GUARDRAIL TERMINAL SECTION-TYPE 1	DS	REMOVE AND DISPOSE SIGN
40.1.0	DOUBLE-FACED PRECAST MEDIAN BARRIER	DSS	REMOVE AND DISPOSE TRAFFIC SIGNAL SYSTEM
40.2.0	SINGLE-FACED PRECAST MEDIAN BARRIER	DSW	REMOVE AND DISPOSE SIDEWALK
40.2.1	SINGLE-FACED PRECAST MEDIAN BARRIER	DTD	REMOVE AND DISPOSE TELEPHONE DUCT BANKS
40.3.0	PRECAST MEDIAN BARRIER TRANSITION UNIT	DUP	REMOVE AND DISPOSE UTILITY POLE
40.5.0	PRECAST MEDIAN BARRIER FOR TEMPORARY TRAFFIC CONTROL	DWW	REMOVE AND DISPOSE PAVED WATERWAY
43.1.0	CEMENT CONCRETE SIDEWALK	FF	FILTER FABRIC RIPRAP FLARED END UNDERLAYMENT
43.2.0	BITUMINOUS CONCRETE SIDEWALK	GET	FLARED GUARDRAIL END TREATMENT
43.3.0	WHEELCHAIR RAMP	IA	IMPACT ATTENUATOR
43.3.1	WHEELCHAIR RAMP FOR LIMITED RIGHT-OF-WAY AREAS	IDL	IMPERVIOUS DITCH LINER
43.4.0	DRIVEWAY DEVELOPMENT FOR 3'-0" TRANSITION CURB	LOD	LIMIT OF DISTURBANCE
43.4.1	DRIVEWAY DEVELOPMENT FOR 6'-0" TRANSITION CURB	LOR	LIMIT OF REGRADING
43.5.0	CEMENT CONCRETE DRIVEWAYS	LS	4" LOAM AND SEED
48.1.0	DETECTABLE WARNING SYSTEM		
51.1.0	TREE PROTECTION DEVICE		
51.1.1	DRIP LINE TREE PROTECTION DEVICE FOR EXISTING TREES		
51.2.0	SHRUB PROTECTION DEVICE		
51.3.0	TREE WELL		
51.4.0	TREE WALL		

AB	ADJUST CATCH BASIN TO GRADE
ABM	ADJUST CATCH BASIN TO MANHOLE
AC	ADJUST CURB STOP TO GRADE
AD	ADJUST DRAINAGE MANHOLE TO GRADE
AE	ADJUST ELECTRIC MANHOLE TO GRADE
AFC	ADJUST FRAME AND COVER TO GRADE
AFG	ADJUST FRAME AND GRATE TO GRADE
AG	ADJUST GAS GATE BOX TO GRADE
AHH	ADJUST HANDHOLE TO GRADE
AS	ADJUST SANITARY SEWER MANHOLE TO GRADE
AT	ADJUST TELEPHONE MANHOLE TO GRADE
AW	ADJUST WATER GATE BOX TO GRADE
BCD	BITUMINOUS CONCRETE DRIVEWAY
	3" BITUMINOUS CONCRETE TYPE 1-2
	8" GRAVEL BORROW SUBBASE COURSE
BPS	BUILD NEW STRUCTURE OVER EXISTING PIPE
CCB	CLEAN CATCH BASIN
CCP	CUT AND CAP PIPE WITH RESTRAINT (ALL SIZES)
CFP	CLEAN AND FLUSH PIPE
CG	CLEARING AND GRUBBING
CMH	CLEAN MANHOLE
CP (DEPTH)	COLD PLANE
CPP	CUT AND PLUG PIPE (ALL TYPES, ALL SIZES)
DB	REMOVE AND DISPOSE BITUMINOUS CURB
DC	REMOVE AND DISPOSE CONCRETE CURB
DCB	REMOVE AND DISPOSE CATCH BASIN
DDI	REMOVE AND DISPOSE DROP INLET
DF	REMOVE AND DISPOSE FENCE
DFC	REMOVE AND DISPOSE FRAME AND COVER
DFE	REMOVE AND DISPOSE FLARED END SECTION
DFG	REMOVE AND DISPOSE FRAME AND GRATE
DFH	REMOVE AND DISPOSE FIRE HYDRANT
DFP	REMOVE AND DISPOSE FLEXIBLE PAVEMENT
DG	REMOVE AND DISPOSE GUARDRAIL
DH	REMOVE AND DISPOSE HEADWALL
DHB	REMOVE AND DISPOSE HIGHWAY BOUND
DHH	REMOVE AND DISPOSE HANDHOLE
DL	REMOVE AND DISPOSE LIGHT AND FOUNDATION
DMB	REMOVE AND DISPOSE MEDIAN BARRIER
DMH	REMOVE AND DISPOSE MANHOLE
DMM	REMOVE AND DISPOSE MEDIAN MARKER
DOW	REMOVE AND DISPOSE OBSERVATION WELL
DP	REMOVE AND DISPOSE PIPE
DPB	REMOVE AND DISPOSE PAVEMENT AND RIGID BASE
DRB	REMOVE AND DISPOSE RIGID BASE
DS	REMOVE AND DISPOSE SIGN
DSS	REMOVE AND DISPOSE TRAFFIC SIGNAL SYSTEM
DSW	REMOVE AND DISPOSE SIDEWALK
DTD	REMOVE AND DISPOSE TELEPHONE DUCT BANKS
DUP	REMOVE AND DISPOSE UTILITY POLE
DWW	REMOVE AND DISPOSE PAVED WATERWAY
FF	FILTER FABRIC RIPRAP FLARED END UNDERLAYMENT
GET	FLARED GUARDRAIL END TREATMENT
IA	IMPACT ATTENUATOR
IDL	IMPERVIOUS DITCH LINER
LOD	LIMIT OF DISTURBANCE
LOR	LIMIT OF REGRADING
LS	4" LOAM AND SEED

NFH	NEW FIRE HYDRANT WITH GATE VALVE	RIDEM SUBMISSION	2	26
NIC	NOT IN THIS CONSTRUCTION CONTRACT			
NWB	FURNISH AND INSTALL NEW WATER GATE VALVE BOX			
NWVB	FURNISH AND INSTALL NEW WATER GATE VALVE AND BOX			
NWCB	FURNISH AND INSTALL NEW WATER CURB STOP BOX			
NWSB	FURNISH AND INSTALL NEW WATER CURB STOP AND BOX			
PCD	PERMANENT CHECK DAM			
PS	4" PLANTABLE SOIL AND SEED			
RCB	RECONSTRUCT TYPE "D" CATCH BASIN, TO CATCH BASIN WITH GUTTER INLET			
RCM	R.I.D.O.T. COMMUNICATIONS MANHOLE			
RHH	REMOVE, HANDLE, HAUL, TRIM, RESET CURB EDGING, STRAIGHT, CIRCULAR (ALL TYPES)			
RLP	RELOCATE LAMP POST			
RMB	RELOCATE MAILBOX (BY OTHERS)			
RPM	REMOVE PAVEMENT MARKINGS			
RRP	RIP-RAP PAD (SEE DETAIL)			
RRS	REMOVE AND RELOCATE SIGN			
RUP	RELOCATE UTILITY POLE (BY OTHERS)			
SB	STONE BAFFLE			
SBAE	STEEL BEAM BRIDGE CONNECTION APPROACH END (W/O NESTED RAIL)			
SBTE	STEEL BEAM BRIDGE CONNECTION TRAILING END (W/NESTED RAIL)			
SD-	STRUCTURAL DISPOSITION - SEE CS PAGES OF SPECIFICATION			
SF	REMOVE AND STOCKPILE FENCE			
SGA	SPECIAL GRADED AGGREGATE			

FED. ROAD DIV. NO.	STATE	FEDERAL AID PROJECT NO.	FISCAL YEAR	SHEET NO.	TOTAL SHEETS
1	RI	XXXX	2016	3	65
				RIDEM SUBMISSION	3
					26

GENERAL NOTES:

- ANY DAMAGE TO EXISTING PAVEMENT, BRIDGES, CONDUIT, SIDEWALK, FENCES, ETC., CAUSED BY THE CONTRACTOR SHALL BE REPAIRED BY THE CONTRACTOR AT NO ADDITIONAL COST TO THE STATE.
- THE CONTRACTOR SHALL PLACE ALL EQUIPMENT AND MATERIAL AS FAR AWAY AS POSSIBLE FROM THE EDGE OF THE TRAVEL LANE SO AS NOT TO CAUSE A SAFETY HAZARD, IN ACCORDANCE WITH SECTION 106.06 OF THE R.I.D.O.T. STANDARD SPECIFICATION, LATEST EDITION.
- IT IS THE CONTRACTOR'S RESPONSIBILITY TO ENSURE THAT THE EXISTING CONDITIONS ARE NOT OBLITERATED BEFORE CONTROL POINTS ARE LOCATED AND CONSTRUCTION LAYOUT IS ESTABLISHED. THE CONSTRUCTION LAYOUT SHALL BE PROVIDED IN SUFFICIENT DETAIL, THEREBY ENABLING HIM TO CONSTRUCT THE PROJECT IN CONFORMITY WITH THE PLANS AND SPECIFICATIONS. SURVEY WILL BE PROVIDED BY THE CONTRACTOR. THE RESIDENT ENGINEER WILL NOT AUTHORIZE CONSTRUCTION ACTIVITIES TO BEGIN UNTIL HE IS SATISFIED THAT ALL GROUND CONTROL HAS BEEN ESTABLISHED, TIED DOWN, AND DULY RECORDED IN STANDARD FIELD BOOKS.
- ALL R.I. STD. 9.9.0 CONSTRUCTION ACCESS ROADS SHALL BE CONSTRUCTED PRIOR TO ANY ROADWAY ACCEPTING CONSTRUCTION TRAFFIC.
- THE FREQUENCY AND APPLICATION RATES FOR THE DUST CONTROL ITEMS WILL BE AS DIRECTED BY THE ENGINEER.
- ALL SIDEWALK AND DRIVEWAYS DESIGNATED FOR REPLACEMENT SHALL BE CUT AND MATCHED AT LOCATIONS SHOWN ON THE PLANS OR AS DIRECTED BY THE ENGINEER.
- ASPHALT EMULSION TACK COAT SHALL BE PLACED PRIOR TO PAVEMENT PLACEMENT ON THE CONCRETE BASE OR COLD PLANED PAVEMENT, AND ON ANY NEW COURSE WHICH HAS BEEN OPEN TO TRAFFIC, OR ANY NEW COURSE WHICH HAS BEEN EXPOSED FOR MORE THAN 3 DAYS, AND/OR AS DIRECTED BY THE ENGINEER. IT SHALL ALSO BE APPLIED TO VERTICAL PAVEMENT FACES BETWEEN ADJOINING PAVEMENT SECTIONS. ALL APPLICATIONS ON BOTH HORIZONTAL AND VERTICAL SURFACES SHALL BE PAID FOR UNDER THE CONTRACT UNIT BID PRICE FOR CODE 403.0300 "ASPHALT EMULSION TACK COAT."
- THE LIMITS OF CLEARING AND SURFACE DISTURBANCE MUST BE STRICTLY ADHERED TO IN ALL AREAS. IN ADDITION TO THOSE AREAS SPECIFICALLY DESIGNATED ON THE PLANS, THE CONTRACTOR WILL BE RESPONSIBLE FOR PROVIDING AND PLACING, AT HIS OWN EXPENSE, PLANTABLE SOIL AND SEED IN AREAS WHICH ARE OUTSIDE OF THE PROJECT'S AREAS OF DISTURBANCE AND WHICH ARE IMPACTED BY CONSTRUCTION OPERATIONS INCLUDING THOSE AREAS WHERE VEHICLES, EQUIPMENT AND MATERIALS ARE STORED WITH THE PERMISSION OF THE ENGINEER.
- UNDER NO CIRCUMSTANCE WILL THE CONTRACTOR BE ALLOWED TO STOCKPILE REMOVED PAVEMENT MATERIALS WITHIN THE PROJECT LIMITS.
- CLEANING AND SWEEPING OF PAVEMENT WILL INCLUDE REMOVAL OF ALL PAVEMENT DEBRIS PRIOR TO THE PLACEMENT OF EACH BITUMINOUS PAVEMENT LIFT. ALL CLEANING AND SWEEPING SHALL BE DONE TO THE SATISFACTION OF THE ENGINEER.
- PRIOR TO INSTALLATION, ALL SIGNS, MOUNTINGS AND LOCATIONS SHALL BE APPROVED OR MODIFIED BY THE ENGINEER.
- THE COORDINATE SYSTEM, IF SHOWN, IS THE RHODE ISLAND STATE PLANE COORDINATE SYSTEM.
- PAVEMENT OPERATIONS FOR CURBED SECTIONS: IN AREAS WHERE CURBING IS SET TO FINISH LINE AND GRADE, THE CONTRACTOR WILL NOT BE REQUIRED TO UTILIZE THE SENSOR AND SKY-TYPE DEVICE FOR AUTOMATIC GRADE CONTROL, BUT WILL BE ALLOWED TO MANUALLY ADJUST THE BITUMINOUS PAVEMENT FOR CONTROLLING GRADE.
- THE CONTRACTOR SHALL BE RESPONSIBLE FOR MAINTAINING ALL ROADWAYS FREE OF DEBRIS RESULTING FROM THEIR CONSTRUCTION OPERATIONS. ALL DEBRIS SHALL BE REMOVED TO THE SATISFACTION OF THE ENGINEER AT NO ADDITIONAL COST TO THE STATE.
- NO FUEL STORAGE, VEHICLE REFUELING, OR EQUIPMENT STORAGE SHALL TAKE PLACE IN DESIGNATED WETLANDS, NOR WITHIN 100' OF ANY WATER BODY. THIS REQUIREMENT SHALL NOT SUPERSEDE ANY FEDERAL, STATE OR LOCAL LAW, ORDINANCE, RULE OR REGULATION THAT APPLIES TO THE SAME, UNLESS THIS REQUIREMENT IS MORE STRINGENT THAN SAID LAW, ORDINANCE, RULE OR REGULATION.
- THE CONTRACTOR SHALL BE RESPONSIBLE TO ENSURE THAT AT THE END OF FINAL PAVING OPERATIONS, FLOW TO EXISTING DRAINAGE STRUCTURES HAS BEEN REESTABLISHED AND THAT NO ISOLATED DEPRESSIONS REMAIN. THERE SHALL BE NO SEPARATE PAYMENT FOR THIS PROVISION; IT SHALL BE CONSIDERED INCIDENTAL TO PAVING AND COLD PLANING OPERATIONS.
- ALL EMBANKMENTS SHALL BE PLACED IN HORIZONTAL LAYERS NOT EXCEEDING 12" (AFTER COMPACTION) AND SHALL BE COMPACTED AS SPECIFIED BEFORE THE NEXT LAYER IS PLACED. ALSO, EMBANKMENT CONSTRUCTION SHALL CONFORM TO SECTION 202.03.2 OF THE R.I.D.O.T. STANDARD SPECIFICATIONS, LATEST EDITION.
- IF THIS PROJECT IS ON A HURRICANE EVACUATION AND DIVERSIONARY ROUTE, AS DESIGNATED ON THE COVERSHEET, THE CONTRACTOR IS ADVISED THAT UPON 12 (TWELVE) HOURS NOTICE THE ROADWAY SHALL BE OPEN TO EVACUEES AND EMERGENCY PERSONNEL. ANY EXTRA WORK NECESSARY TO COMPLY WITH THIS REQUIREMENT WILL BE REIMBURSED UNDER FORCE ACCOUNT PROCEDURES.
- THE CONTRACTOR SHALL READ, BECOME FAMILIAR WITH, AND ADHERE TO ALL OF THE PROVISIONS, CONDITIONS, AND STIPULATIONS STATED IN THE ENVIRONMENTAL APPROVALS ISSUED FOR THE PROJECT FROM THE DEPARTMENT OF ENVIRONMENTAL MANAGEMENT (RIDEM), AND/OR THE ARMY CORPS OF ENGINEERS (ACOE), AND/OR THE COASTAL RESOURCES MANAGEMENT COUNCIL (CRMC). COPIES OF EACH OF THESE PERMITS ARE INCLUDED IN THE CS PAGES OF THE CONTRACT DOCUMENTS. ALL COSTS ASSOCIATED WITH THESE CONDITIONS SHALL BE CONSIDERED INCIDENTAL TO THE CONSTRUCTION AND INCLUDED WITH THE COST FOR THE ASSOCIATED BID ITEM(S).
- FOR ALL PROJECTS INVOLVING KNOWN SITE REMEDIATION ISSUES, THE CONTRACTOR SHALL READ, BECOME FAMILIAR WITH, AND ADHERE TO ALL OF THE CONSTRUCTION RELATED PROVISIONS, CONDITIONS, AND STIPULATIONS OF ANY REMEDIAL PLANS DEVELOPED FOR THE PROJECT. COPIES OF THESE DOCUMENTS ARE INCLUDED IN THE CS PAGES OF THE CONTRACT DOCUMENTS. ALL COSTS ASSOCIATED WITH COMPLIANCE WITH THESE DOCUMENTS SHALL BE CONSIDERED INCIDENTAL TO THE CONSTRUCTION AND INCLUDED WITH THE COST FOR THE ASSOCIATED BID ITEM(S).
- NO UNPROTECTED CONSTRUCTED FEATURE MAY PROJECT MORE THAN 4 INCHES ABOVE THE FINISHED GRADE OF A TRAVERSABLE SLOPE IN A CLEAR ZONE, e.g. HEADWALL, DRAINAGE INLET, ETC.
- THE REMAINING SECTION OR STUB OF A BREAKAWAY BASE MAY NOT PROJECT MORE THAN 4 INCHES ABOVE THE FINISHED GRADE OF A TRAVERSABLE SLOPE IN A CLEAR ZONE, e.g. SIGN POSTS, LIGHT POLES, FIRE HYDRANTS, ETC.

DRAINAGE AND EROSION CONTROL NOTES:

- FOR ALL PROJECTS WITH AT LEAST ONE(1) ACRE OF SOIL DISTURBANCE, R.I.D.O.T. IS REQUIRED TO DEVELOP AND ENFORCE A SITE SPECIFIC STORM WATER POLLUTION PREVENTION PLAN (SWPPP) IN ORDER TO REMAIN IN COMPLIANCE WITH THE RIDES GENERAL PERMIT FOR STORMWATER DISCHARGES ASSOCIATED WITH CONSTRUCTION ACTIVITIES. THE CONTRACTOR SHALL READ, BECOME FAMILIAR WITH, AND ADHERE TO ALL OF THE PROVISIONS, CONDITIONS, AND STIPULATIONS OF THE GENERAL PERMIT AND THE SITE SPECIFIC SWPPP FOR THIS PROJECT. COPIES OF THESE DOCUMENTS ARE INCLUDED IN THE CS PAGES OF THE CONTRACT DOCUMENTS. ALL COSTS ASSOCIATED WITH ADHERENCE TO THE SWPPP SHALL BE CONSIDERED INCIDENTAL TO THE CONSTRUCTION AND INCLUDED WITH THE COST FOR THE ASSOCIATED BID ITEM(S).
- NO UNDISTURBED AREAS SHALL BE CLEARED OF EXISTING VEGETATION AFTER OCTOBER 15 OF ANY CALENDAR YEAR OR DURING ANY PERIOD OF FULL OR LIMITED WINTER SHUTDOWN. ALL DISTURBED SOILS EXPOSED PRIOR TO OCTOBER 15 OF ANY CALENDAR YEAR SHALL BE SEEDED OR PROTECTED BY THAT DATE. ANY SUCH AREAS THAT DO NOT HAVE ADEQUATE VEGETATIVE STABILIZATION, AS DETERMINED BY THE RESIDENT ENGINEER OR ENVIRONMENTAL INSPECTOR, BY NOVEMBER 15 OF ANY CALENDAR YEAR, MUST BE STABILIZED THROUGH THE USE OF EROSION CONTROL MATTING OR HAY MULCH, IN ACCORDANCE WITH SPECIFICATIONS CONTAINED WITHIN THE R.I. SOIL EROSION AND SEDIMENT CONTROL HANDBOOK. IF WORK CONTINUES WITHIN ANY OF THESE AREAS DURING THE PERIOD FROM OCTOBER 15 THROUGH APRIL 15, CARE MUST BE TAKEN TO ENSURE THAT ONLY THE AREA REQUIRED FOR THAT DAY'S WORK IS EXPOSED, AND ALL ERODIBLE SOIL MUST BE REESTABLISHED WITHIN 5 WORKING DAYS. ANY WORK TO CORRECT PROBLEMS RESULTING FROM FAILURE TO COMPLY WITH THIS PROVISION SHALL BE THE RESPONSIBILITY OF THE CONTRACTOR. THERE WILL BE NO SEPARATE PAYMENT FOR THIS PROVISION, IT SHALL BE CONSIDERED INCIDENTAL TO CONSTRUCTION OPERATIONS. STABILIZATION OF ONE FORM OR ANOTHER AS DESCRIBED ABOVE SHALL BE ACHIEVED WITHIN 2 WEEKS OF FINAL GRADING.
- STOCKPILES OF MATERIAL SHALL NOT BE LOCATED WITHIN REGULATED WETLANDS OR BUFFER ZONE AREAS. THEY SHALL HAVE SIDE SLOPES NO GREATER THAN 30% AND STOCKPILES OF ERODIBLE MATERIAL SHALL ALSO BE SEEDED AND RINGED WITH R.I. STD. 9.1.0 TO STABILIZE.
- IF THE PLANS INCLUDE SPECIFIC AREAS FOR PLACEMENT OF CONSTRUCTION DEWATERING BASINS AND/OR EQUIPMENT AND MATERIALS STORAGE AND STOCKPILING, AND IF THE CONTRACTOR ELECTS TO UTILIZE ANY OTHER AREAS FOR THESE PURPOSES, THIS SHALL BE APPROVED BY THE ENGINEER ONLY AFTER OBTAINING ANY NECESSARY PERMITS AND/OR PERMIT MODIFICATIONS FROM THE APPROPRIATE REGULATORY AUTHORITY(IES). ANY PERMITTING REQUIREMENTS SHALL BE THE RESPONSIBILITY OF THE CONTRACTOR AND SHALL BE ACCOMPLISHED AT NO COST TO THE STATE. THE ENGINEER WILL COORDINATE SUBMISSION OF ANY REQUIRED PERMIT APPLICATION MATERIALS WITH THE R.I.D.O.T. OFFICE OF ENVIRONMENTAL PROGRAMS.
- JUTE MESH SHALL BE USED TO STABILIZE PLANTABLE SOIL AND/OR LOAM IN ALL DITCHES, ON ALL SLOPES ADJACENT TO WETLANDS AND WETLAND PERIMETERS, AND ON ALL SLOPES WITHIN WATER QUALITY BASINS. JUTE MESH IN DITCHES SHALL EXTEND TO AN ELEVATION 2 FEET ABOVE THE BOTTOM OF THE DITCH.
- SEEDING ON ALL SLOPES 3 TO 1 OR STEEPER SHALL CONSIST OF THE FOLLOWING APPLICATIONS UNLESS CHANGED IN THE CONTRACT.
 - SEEDING TYPE I.
 - ADHESIVE MULCH STABILIZER
- UNVEGETATED SLOPES SHALL NOT BE UNATTENDED OR EXPOSED FOR PERIODS IN EXCESS OF 2 WEEKS OR THROUGH THE INACTIVE WINTER SEASON.
- PRIOR TO DRAINAGE AND UTILITY CONSTRUCTION, THE CONTRACTOR IS RESPONSIBLE FOR VERIFYING THE LOCATION (HORIZONTAL AND VERTICAL) OF ALL EXISTING PIPES AND/OR STRUCTURES WHICH ARE TO BE CONNECTED. ANY VARIATION FOUND FROM THE PLANS MUST BE BROUGHT TO THE ENGINEER'S ATTENTION PRIOR TO DRAINAGE AND UTILITY CONSTRUCTION. WORK CAN COMMENCE ONLY UPON THE ENGINEER'S AUTHORIZATION.
- ALL DRAINAGE AND UTILITY STRUCTURES WITHIN THE PAVED ROADWAY SHALL BE ADJUSTED TO GRADE WITH THE SURROUNDING PAVEMENT PRIOR TO THE WINTER SHUTDOWN.
- DURING CONSTRUCTION, THE CONTRACTOR SHALL BE RESPONSIBLE FOR MAINTAINING DRAINAGE AND RUNOFF FLOW DURING STORMS AND PERIODS OF RAINFALL THROUGHOUT THE WORK AREA.
- CATCH BASIN RIM GRADES NOTED ON PLANS ARE DEPRESSED 0.1' LOWER THAN THE GUTTER GRADE. RIM ELEVATIONS SHOWN ARE FINAL GRADES. THE CONTRACTOR SHALL PLACE FRAMES AND GRATES 0.1' BELOW THE GRADE CONSTRUCTED IN THIS CONTRACT OR AS DIRECTED BY THE ENGINEER.
- PROVISIONS FOR CLEARING TO ACCESS OUTFALLS DURING THE CLEANING AND FLUSHING OF THE CLOSED DRAINAGE SYSTEM SHALL BE KEPT TO A MINIMUM.
 - ANY VEGETATIVE CLEARING SHALL BE LIMITED TO BRUSH AND TREES LESS THAN 3" DIAMETER.
 - NO HEAVY EQUIPMENT MAY ENCR OACH UPON VEGETATED PERIMETER OR RIVERBANK WETLANDS AS WELL AS BIOLOGICAL WETLANDS.
- THE CONTRACTOR SHALL INSTALL ALL EROSION CONTROL DEVICES FOR OUTLET PROTECTION PRIOR TO CLEANING AND FLUSHING STORM WATER DRAINAGE. EROSION CONTROL DEVICES SHALL REMAIN IN PLACE UNTIL ALL FLUSHED SEDIMENTS ARE REMOVED. AT ALL OUTFALL LOCATIONS WHERE PIPES ARE TO BE CLEANED AND FLUSHED, OUTLET PROTECTION (R.I. STD. 9.1.0 OR 9.3.0) SHALL BE INSTALLED TO TRAP SEDIMENTS. THESE SEDIMENTS SHALL THEN BE REMOVED AND DISPOSED OF LEGALLY BEFORE THE OUTLET PROTECTION DEVICES ARE REMOVED. IF OUTLET PROTECTION AT THE OUTFALL IS NOT FEASIBLE, THEN THE OUTLET PIPE OF THE LAST DRAINAGE STRUCTURE TO BE CLEANED SHALL BE PLUGGED TO CAPTURE ALL MATERIALS FLUSHED FROM PIPES. AFTER THE MATERIALS ARE REMOVED FROM THE DRAINAGE STRUCTURE, THE OUTLET SHALL BE UNPLUGGED TO RESUME NORMAL FUNCTIONING.
- R.I. STD. 9.8.0 BALED HAY INLET PROTECTION SHALL BE INSTALLED AT ALL CATCH BASINS AND INLETS WHENEVER SUBBASE IS EXPOSED, AND SHALL REMAIN IN PLACE UNTIL THE ABUTTING GROUND SURFACES ARE STABILIZED.
- WHERE BALED HAY INLET PROTECTION AND SILT FENCES ARE USED AT CATCH BASINS, THEY SHALL BE REMOVED AT THE END OF THE PROJECT OR AS DIRECTED BY THE ENGINEER IN ORDER TO PREVENT CLOGGING OF THE INLET.

DRAINAGE AND EROSION CONTROL NOTES (CONTINUED):

- DETECTION AND RETENTION BASINS MAY BE ROUGH GRADED AND STABILIZED WITH VEGETATION AND/OR OTHER EROSION CONTROL MEASURES AS REQUIRED BY THE ENGINEER PRIOR TO USE AS TEMPORARY SEDIMENTATION BASINS DURING PROJECT CONSTRUCTION. FINAL BASIN CONSTRUCTION SHALL NOT COMMENCE UNTIL ALL SOURCES OF SEDIMENT HAVE BEEN ELIMINATED, FINAL ROADSIDE VEGETATION IS ESTABLISHED AND USE OF TEMPORARY BASINS IS NO LONGER REQUIRED AS DIRECTED BY THE ENGINEER. ANY ISSUES RELATING TO EROSION AND/OR SEDIMENT TRANSPORT INTO WETLAND AREAS RESULTING FROM SUCH USE OF SEDIMENTATION BASINS DURING CONSTRUCTION SHALL BE THE RESPONSIBILITY OF THE CONTRACTOR. ANY CORRECTIVE ACTION REQUIRED TO RESOLVE SUCH ISSUES SHALL BE COMPLETED BY THE CONTRACTOR.
- THE TOE OF ANY FILL SLOPE IS TO REMAIN AT LEAST 1' INSIDE OF ALL EROSION CONTROLS. UNDER NO CIRCUMSTANCES SHALL THE CONTRACTOR COVER ANY PORTION OF THE EROSION CONTROL MEASURES WITH MATERIAL. ANY MATERIAL THAT IS PLACED ON ANY EROSION CONTROLS BY THE CONTRACTOR, OR ANY AGENT OF THE CONTRACTOR, SHALL BE IMMEDIATELY REMOVED BY THE CONTRACTOR, AND ANY NECESSARY REPAIRS TO THE EROSION CONTROLS ACCOMPLISHED.
- PRIOR TO COMMENCING CONSTRUCTION ACTIVITIES, EROSION AND SEDIMENTATION CONTROLS SHALL BE INSTALLED AT THOSE AREAS INDICATED ON THE PLANS. CLEARING MAY OCCUR PRIOR TO INSTALLATION OF SUCH CONTROLS, HOWEVER NO GRUBBING, GRADING, FILLING, OR OTHER SOIL DISTURBANCE SHALL OCCUR PRIOR TO INSTALLATION. THE LIMITS OF CLEARING AND SURFACE DISTURBANCE MUST BE STRICTLY ADHERED TO IN ALL AREAS.
- ALL HAY BALES, SILT FENCE OR TEMPORARY PROTECTION SHALL REMAIN IN PLACE UNTIL AN ACCEPTABLE STAND OF GRASS IS ESTABLISHED. IF NEEDED, TEMPORARY SEEDING CAN HELP TO MINIMIZE EROSION. TEMPORARY SEED WILL CONFORM TO R.I.D.O.T. STANDARD TEMPORARY SEED MIX.
- THE CONTRACTOR MUST REPAIR AND/OR RESEED ANY AREAS THAT DO NOT DEVELOP WITHIN THE PERIOD OF ONE YEAR AND HE SHALL DO SO AT NO ADDITIONAL EXPENSE TO THE STATE.
- THE NORMAL ACCEPTABLE SEASONAL SEEDING DATES ARE SPECIFIED IN SUBSECTION L.02.03 OF THE R.I.D.O.T. STANDARD SPECIFICATIONS, LATEST EDITION.
- ADDITIONAL EROSION CONTROLS, SHALL BE INSTALLED AS DIRECTED BY THE RESIDENT ENGINEER. THESE ADDITIONAL ITEMS WILL BE PAID AT THE UNIT PRICE FOR THAT BID ITEM.

UTILITY NOTES:

- EXISTING UTILITIES HAVE BEEN SHOWN ON THE PLANS USING THE BEST AVAILABLE INFORMATION AND ARE APPROXIMATE. BUILDING SERVICE CONNECTIONS (ELECTRIC, GAS, TELEPHONE, WATER AND SANITARY) ARE NOT SHOWN. CONTRACTOR IS TO ASSUME SERVICES ARE PRESENT TO ALL BUILDINGS.
- THE CONTRACTOR SHALL VERIFY THE LOCATIONS OF ALL EXISTING DRAINAGE AND UTILITIES BOTH UNDERGROUND AND OVERHEAD BEFORE EXCAVATION BEGINS IN ACCORDANCE WITH CHAPTER 39-1.2 OF THE R.I. GENERAL LAWS ENTITLED "EXCAVATION NEAR UNDERGROUND UTILITY FACILITIES", WITH AMENDMENTS EFFECTIVE AS OF NOVEMBER 1, 2009 AND, WHEN NECESSARY, BY CONTACTING THE INDIVIDUAL UTILITY COMPANIES. EXCAVATION SHALL BE IN ACCORDANCE WITH ALL STATUTES, ORDINANCES, RULES AND REGULATIONS OF ANY APPLICABLE CITY, TOWN, STATE OR FEDERAL AGENCY. THE CONTRACTOR SHOULD UNDERSTAND THAT NOT ALL UTILITIES SUBSCRIBE TO THE DIG SAFE PROGRAM. IT IS THE CONTRACTOR'S RESPONSIBILITY TO NOTIFY ALL UTILITY COMPANIES AND ENSURE THAT ALL UTILITIES HAVE BEEN MARKED PRIOR TO COMMENCING THEIR WORK. ANY DAMAGE TO EXISTING UTILITIES MARKED IN THE FIELD, OR AS A RESULT OF FAILING TO CONTACT THE APPROPRIATE UTILITY COMPANY, SHALL BE REPAIRED OR REPLACED AT NO ADDITIONAL COST TO THE STATE.
- ALL EXISTING UTILITIES TO BE ABANDONED SHALL BE CAPPED.
- EXISTING WATER SERVICES SHALL BE RECONNECTED TO THE NEW WATER MAINS.
- UTILITY SERVICE CONNECTIONS SHALL BE MAINTAINED TO ALL EXISTING FACILITIES TO REMAIN.
- FIRE HYDRANTS SHALL NOT BE REMOVED FROM SERVICE WITHOUT WRITTEN AUTHORIZATION FROM THE FIRE DEPARTMENT OR THE WATER AUTHORITY.
- ALL NEW WATER LINES SHALL BE DISINFECTED TO THE SATISFACTION OF THE WATER AUTHORITY IN ACCORDANCE WITH THE SPECIFICATIONS.
- ALL UTILITY POLE RELATED WORK SHALL BE BY OTHERS.

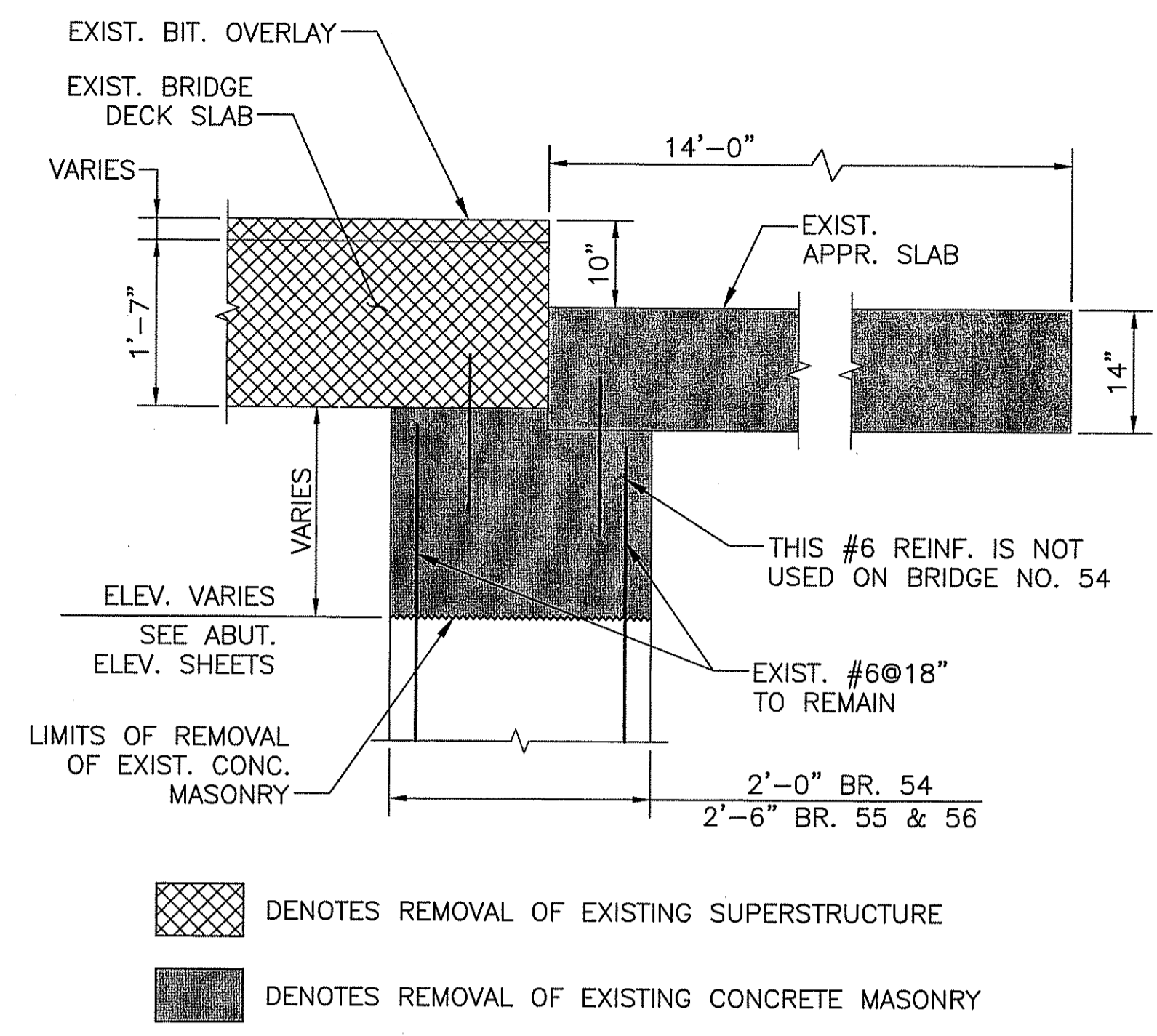
DEPARTMENT OF ENVIRONMENTAL MANAGEMENT
OFFICE OF WATER RESOURCES
FRESHWATER WETLANDS PROGRAM
APPROVED WITH CONDITIONS
AS SPECIFIED IN THE LETTER OF APPROVAL
DATED NOV 1 2016 FILE # 16-0151
NO CHANGES ALLOWED WITHOUT PRIOR APPROVAL
APPROVED PLANS MUST BE AT CONSTRUCTION SITE

Environmental Management
SEP 15 2016
Office of Water Resources

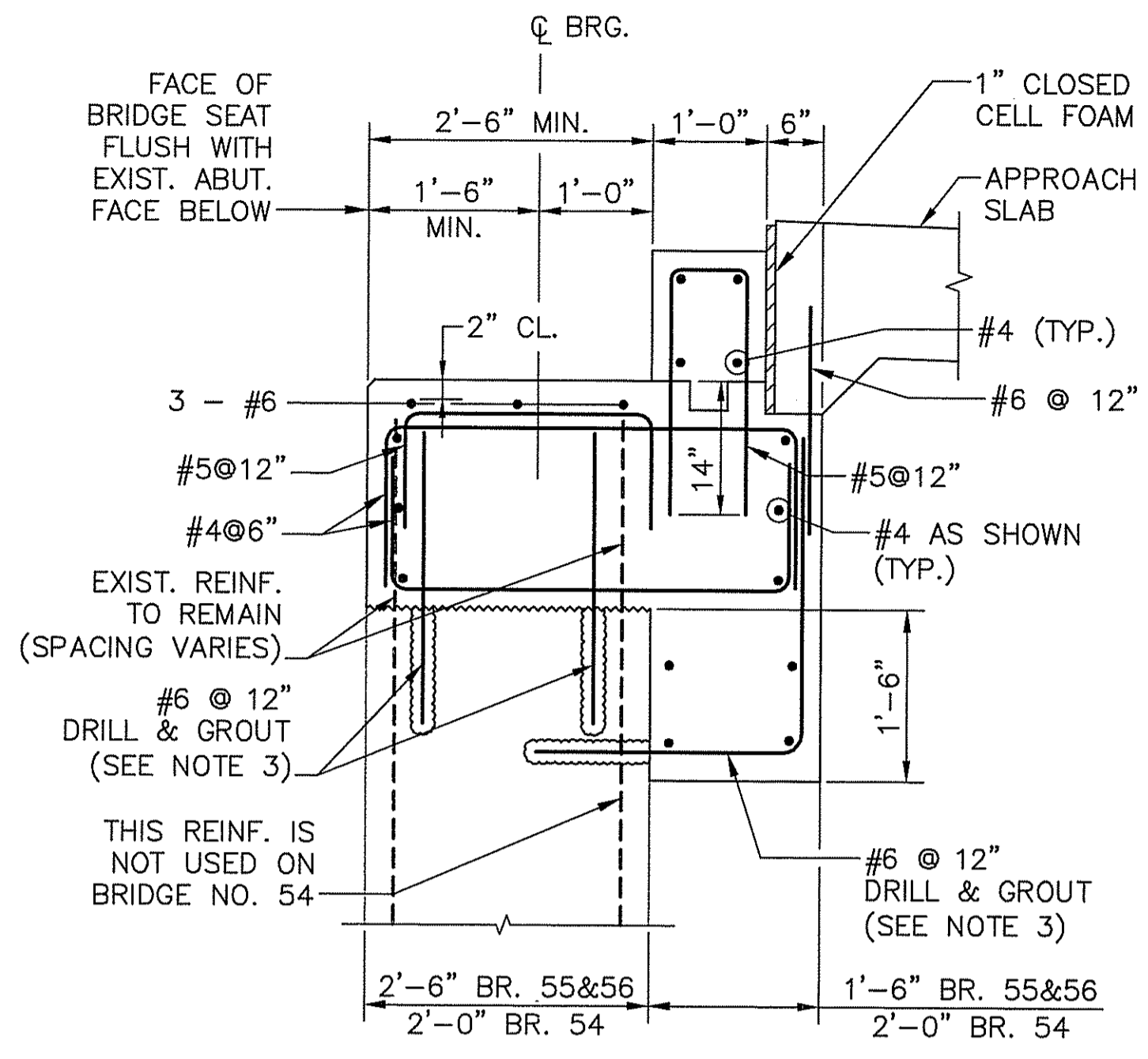
THIS PLAN SHALL NOT BE ALTERED

REVISIONS			RHODE ISLAND	
NO.	DATE	BY	DEPARTMENT OF TRANSPORTATION	
1	4/07	TRB	CAROLINA BRIDGES BR. 54, 55 & 56 RICHMOND & CHARLESTOWN, RHODE ISLAND	
2	3/10	RBH		
3	4/14	MLP		
STANDARD NOTES - 1			GROFALO GAROFALO & ASSOCIATES, INC.	
CHECKED BY: M.W.C. DATE: 08/31/16 SCALE: NO SCALE			85 CORLISS STREET \ P.O. BOX 6145 PROVIDENCE, RHODE ISLAND 02940	

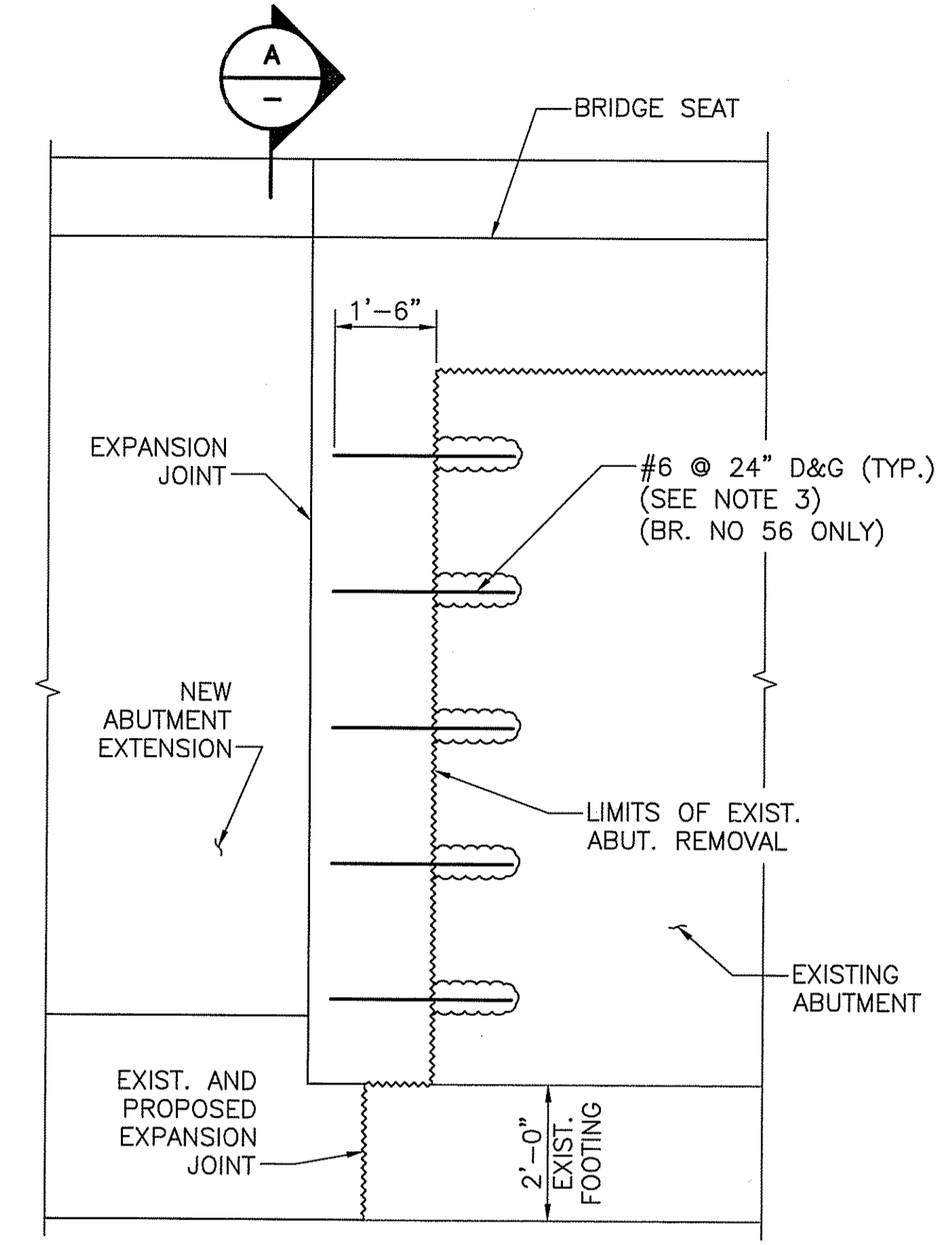




TOP OF EXISTING ABUTMENT LIMITS OF BRIDGE DEMOLITION
SCALE: 3/4" = 1'-0"

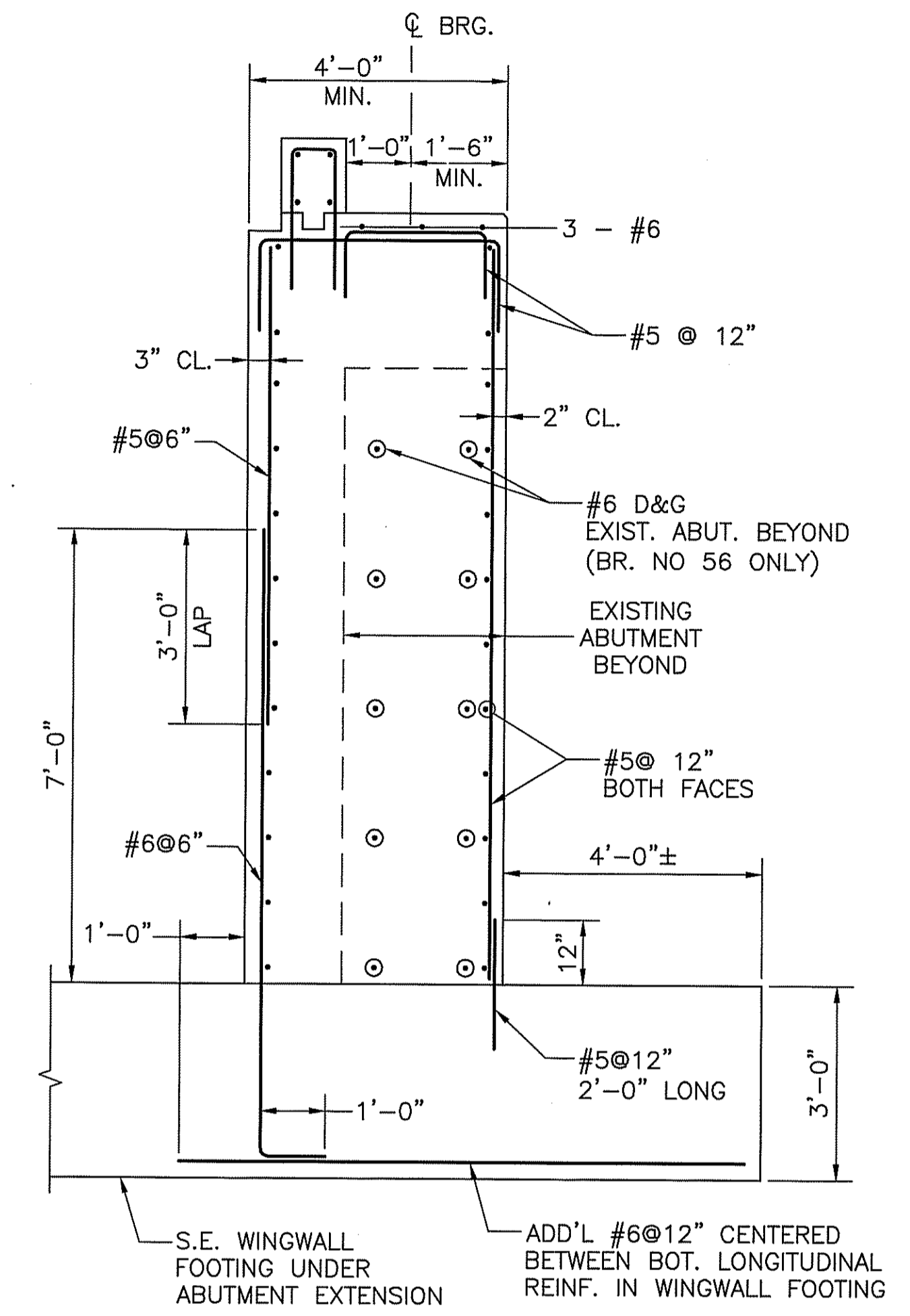


TYPICAL ABUTMENT SECTION
SCALE: 3/4" = 1'-0"



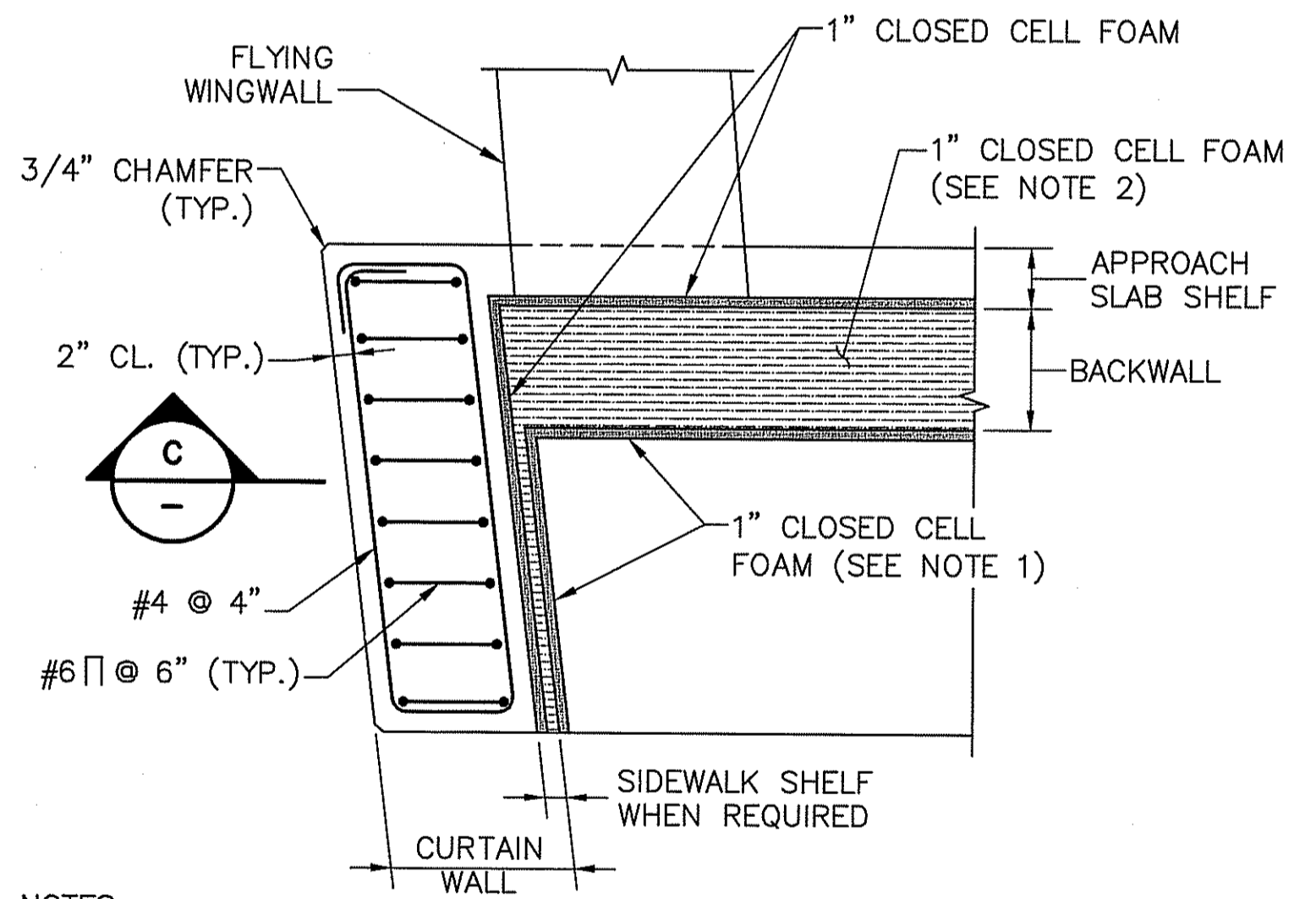
NOTES:
1. DOWELS SHOWN ONLY. SEE SECTION "A" THIS SHEET FOR ADDITIONAL REINFORCEMENT.
2. BRIDGE NO. 56 ABUTMENT ELEVATION SHOWN. FOR BRIDGE 55 ABUTMENT ELEVATION SEE SHEET 38.

ABUTMENT EXTENSION ELEVATION
NOT TO SCALE



SECTION A
NOT TO SCALE

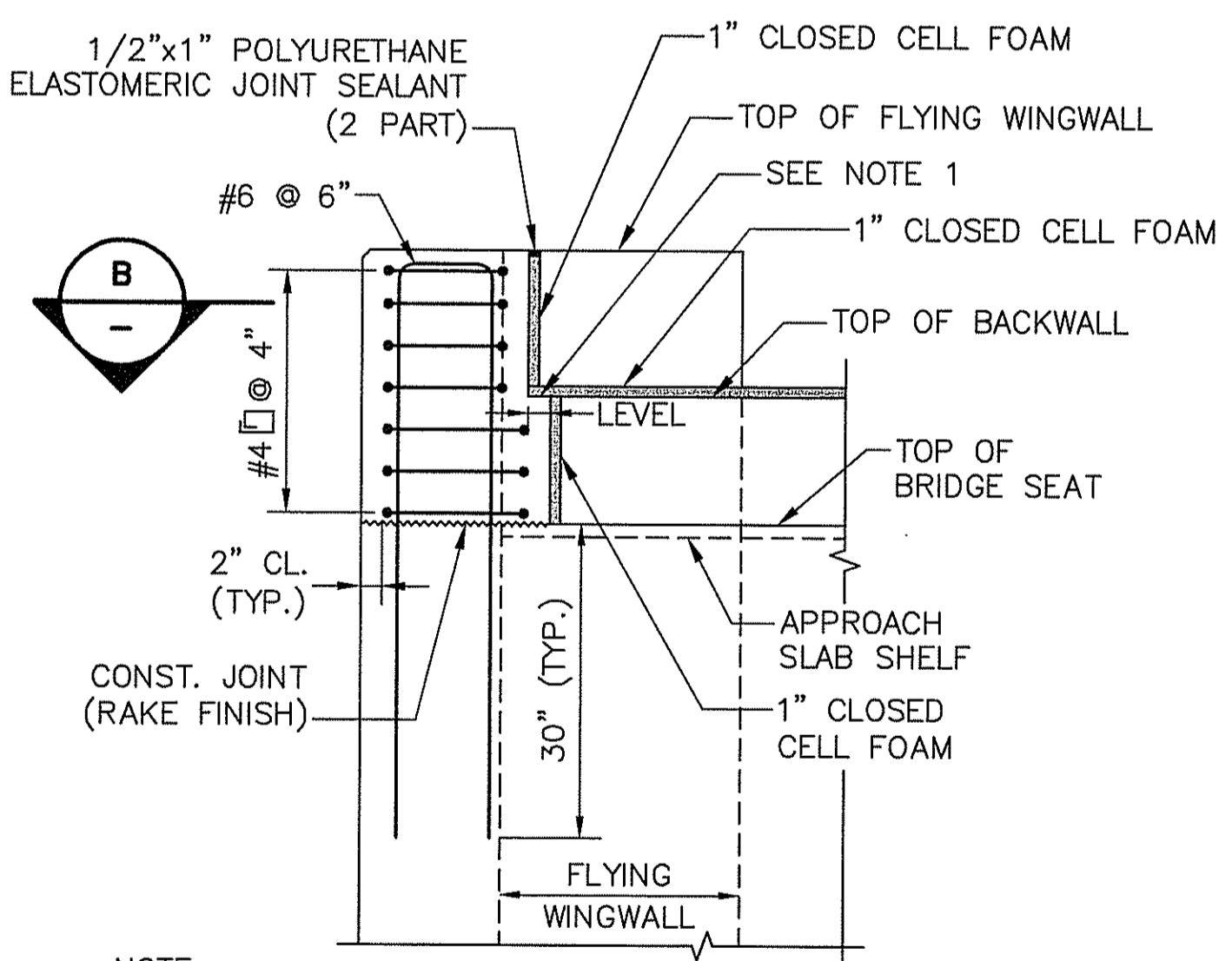
NOTES:
1. IF ANY EXISTING REINFORCING THAT IS TO REMAIN IS FOUND TO HAVE LOST MORE THAN 25% OF ITS DIAMETER THEN IT SHALL BE REPLACED WITH NEW REINFORCING OF SAME SIZE DRILLED AND GROUTED IN PLACE PAID FOR UNDER CODE 819.9901.
2. IF ANY EXISTING REINFORCING IS DAMAGED BY THE CONTRACTORS OPERATION THEN IT SHALL BE REPLACED WITH SAME SIZE REINFORCING AND DRILLED AND GROUTED IN PLACE AT THE CONTRACTORS EXPENSE.



NOTES:
1. ATTACH CLOSED CELL FOAM TO THE BACK AND SIDE OF THE EXTERIOR PRECAST BEAM PRIOR TO PLACING THE CONCRETE FOR THE BACKWALL AND CURTAIN WALL.
2. THE CONTRACTOR SHALL INSURE THAT ALL CURTAIN WALL AND BACKWALL CONCRETE IS PROPERLY LINED PRIOR TO PLACING THE CONCRETE FOR THE SIDEWALK OR THE DECK. THE SIDEWALK OR DECK CONCRETE MUST NOT COME IN DIRECT CONTACT WITH THE CURTAIN WALL OR BACKWALL CONCRETE.
3. BACKWALL AND FLYING WINGWALL REINFORCEMENT NOT SHOWN FOR CLARITY.
4. CURTAIN WALL DIMENSIONS VARIES. FOR CURTAIN WALL DIMENSIONS SEE ABUTMENT PLAN SHEETS.
5. CURTAIN WALL DETAILS WITH FLYING WINGWALL SHOWN. CURTAIN WALL DETAILS AT SOUTHEAST WINGWALL SIMILAR.

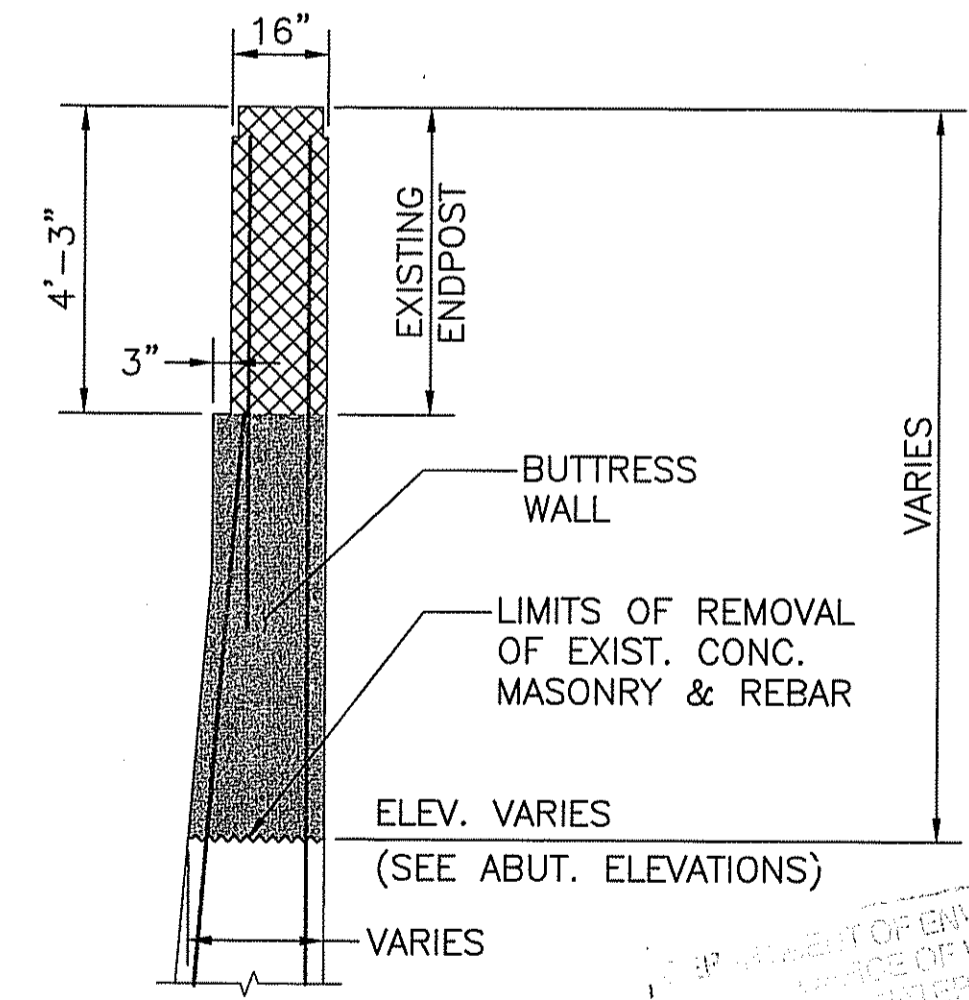
SECTION B

ABUTMENT CURTAIN WALL DETAILS
SCALE: 3/4" = 1'-0"



NOTE:
1. TOP OF SIDEWALK SHELF SHALL BE TROWELED SMOOTH PARALLEL TO PROFILE GRADE.
2. ABUTMENT REINFORCEMENT BELOW CONSTRUCTION JOINT HAS BEEN OMITTED FOR CLARITY.
3. CURTAIN WALL DIMENSIONS VARIES. FOR CURTAIN WALL DIMENSIONS AND ELEVATIONS SEE ABUTMENT PLAN AND ELEVATION SHEETS.
4. CURTAIN WALL DETAILS WITH FLYING WINGWALL SHOWN. CURTAIN WALL DETAILS AT SOUTHEAST WINGWALL SIMILAR.

SECTION C



TOP OF EXISTING BUTTRESS WALL LIMITS OF BRIDGE DEMOLITION
SCALE: 3/8" = 1'-0"

Environmental Management
Office of Water Resources
SEP 15 2016



NO.	DATE	BY

RHODE ISLAND
DEPARTMENT OF TRANSPORTATION
CHARLESTOWN, RICHMOND RHODE ISLAND

CAROLINA BRIDGES
BRIDGE NO. 54, 55 & 56
TYPICAL ABUTMENT DETAILS I

CHECKED BY: SPC DATE: 8/31/2016 SCALE: AS NOTED

