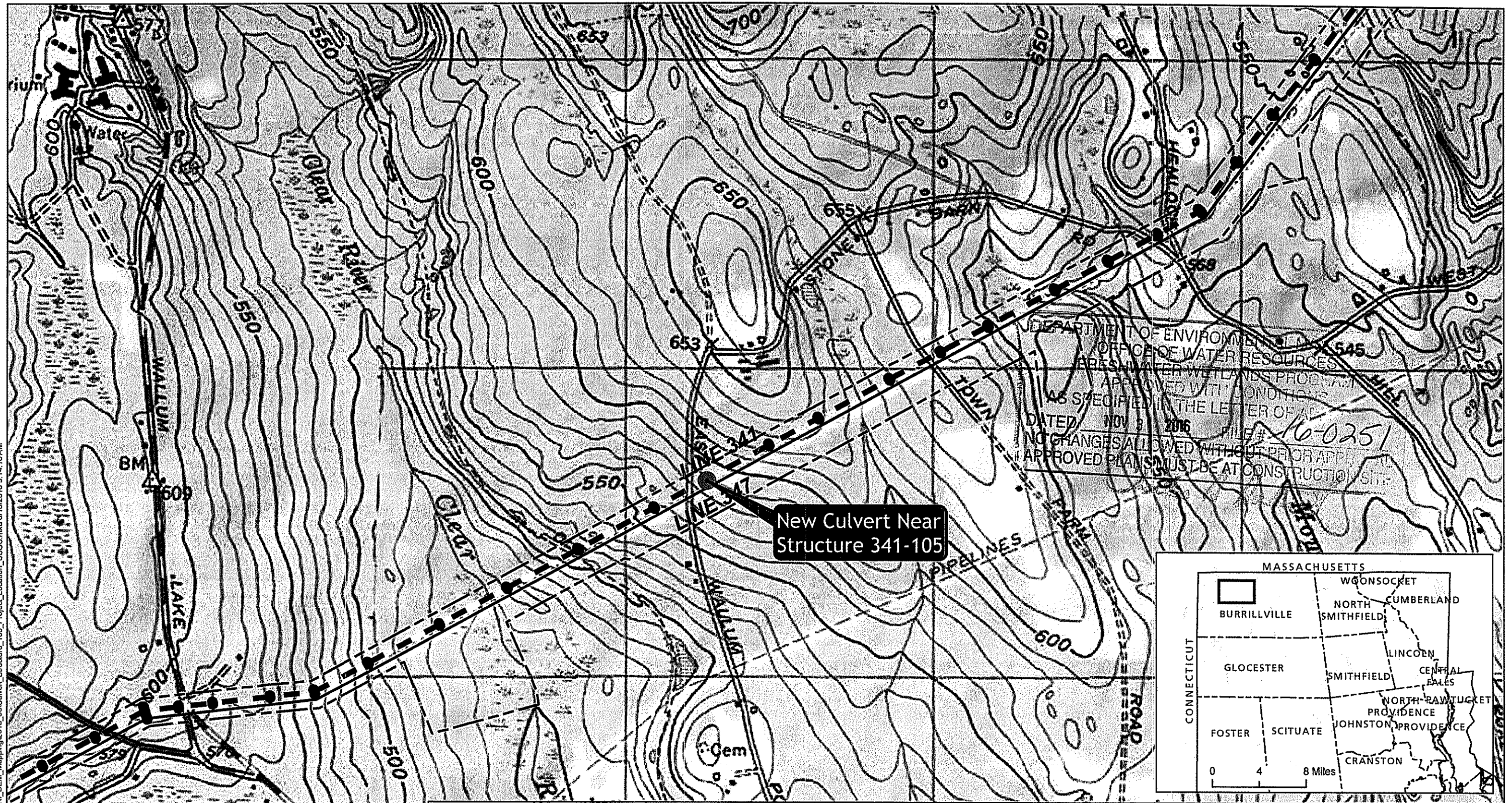
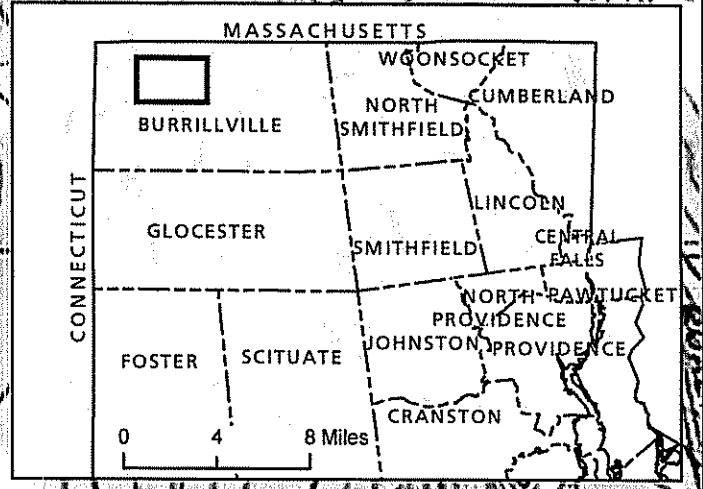


W:\Projects\NatGrid\IRP\_NEW\Map\DIRI\_DEM\_Mapping\2016\_06\Culvert\_Structure\_105\_Project\_Location\_USGS.mxd 8/18/2016 9:14:18 AM



New Culvert Near Structure 341-105

DEPARTMENT OF ENVIRONMENTAL MANAGEMENT  
OFFICE OF WATER RESOURCES  
FRESHWATER WETLANDS PROGRAM  
APPROVED WITH CONDITIONS  
AS SPECIFIED IN THE LETTER OF APPROVAL  
DATED NOV 8, 2016 FILE # 16-0251  
NO CHANGES ALLOWED WITHOUT PRIOR APPROVAL  
APPROVED PLANS MUST BE AT CONSTRUCTION SITE



Environmental Management  
SEP 30 2016  
Office of Water Resources  
NOT FOR CONSTRUCTION

- Line 341 Structures
- Existing 345-kV
- - - Line 341 345-kV
- - - Right-of-Way

Data Source: B&McD 2010, USGS Topo 24K Esri.

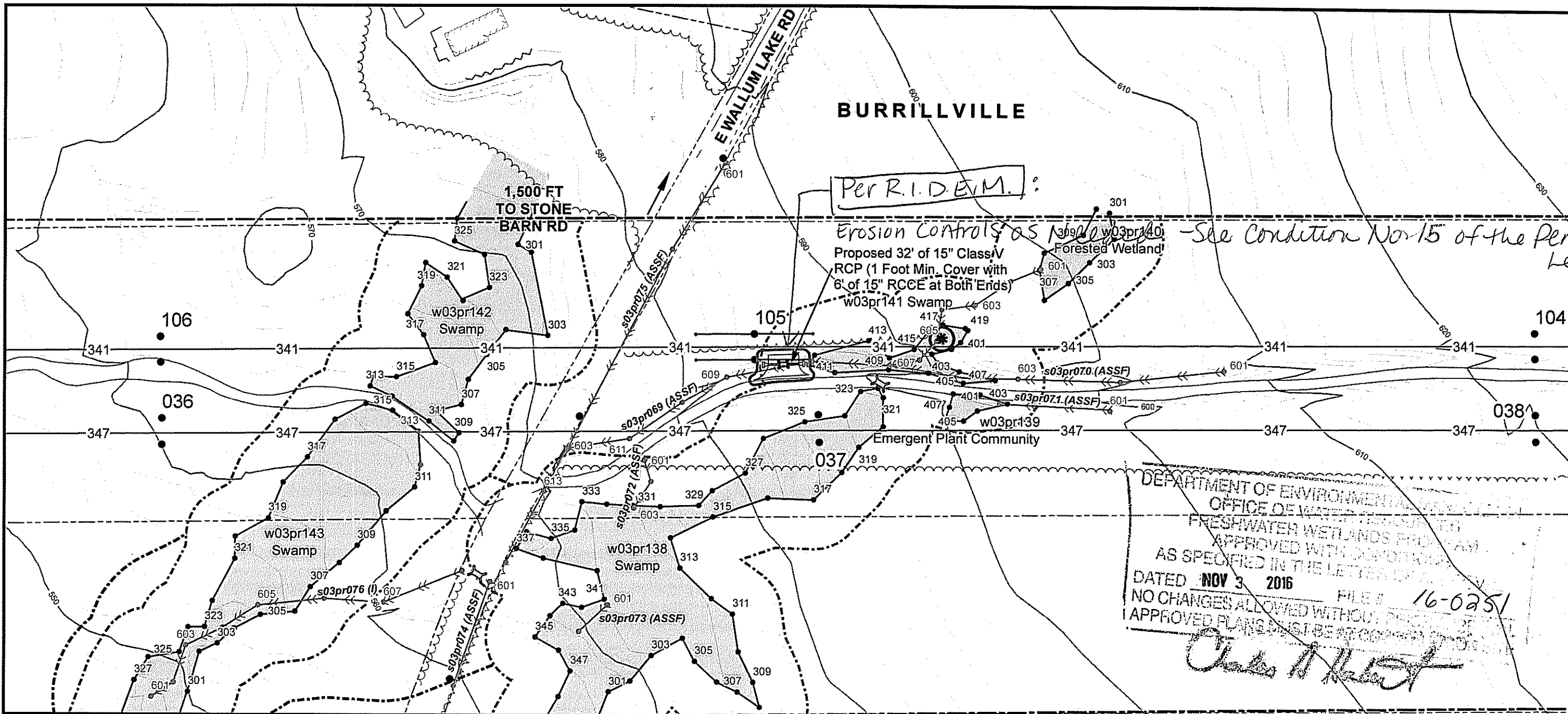
National Grid Interstate Reliability Project  
Figure 1  
**New Culvert  
Near Structure 341-105**  
Burrillville, Rhode Island  
0 500 1,000 2,000  
Feet

**nationalgrid**

**AECOM**

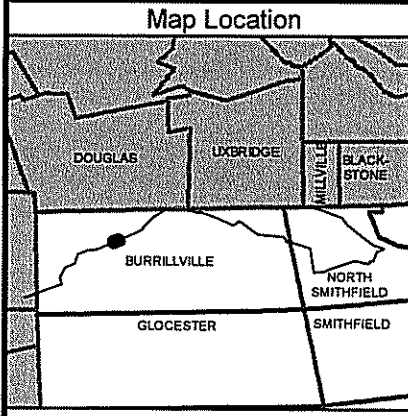
Date: 8/18/2016

W:\Projects\NalGtd\VRP\_NEW\VRP\_DEM\_Mapping\2016\_08\Culvert\Struct05\_PlanMetric\_Mapping.mxd 9/6/2016 10:33:46 AM



*-See Condition No. 15 of the Permit Letter*

DEPARTMENT OF ENVIRONMENTAL MANAGEMENT  
 OFFICE OF WATER RESOURCES  
 FRESHWATER WETLANDS PROGRAM  
 APPROVED WITH CONDITIONS  
 AS SPECIFIED IN THE LETTER OF APPROVAL  
 DATED **NOV 3 2016** FILE # **16-0251**  
 NO CHANGES ALLOWED WITHOUT PERMIT  
 APPROVED PLANS MUST BE AT COMPANY'S RISK  
*Charles H. Hester*



Existing Conditions		Proposed	
Right-of-Way	Wetland with Flag	Proposed Culvert	50' Perimeter Wetland
Access Road	Vernal Pool Location	Limit of Disturbance	100' Riverbank Buffer
Existing Structure	Protected Habitat		200' Riverbank Buffer
Existing Culvert	Conservation Area		Floodway
Watercourse			Floodplain
Parcel Boundaries			
Edge of Wooded Area			
Stone Wall			
Existing Transmission Line			
Existing Distribution Line			

Environmental Management  
**SEP 30 2016**  
 Office of Water Resources

National Grid Interstate Reliability Project  
 Figure 2  
**New Culvert**  
**Near Structure 341-105**  
 Burrillville, Rhode Island

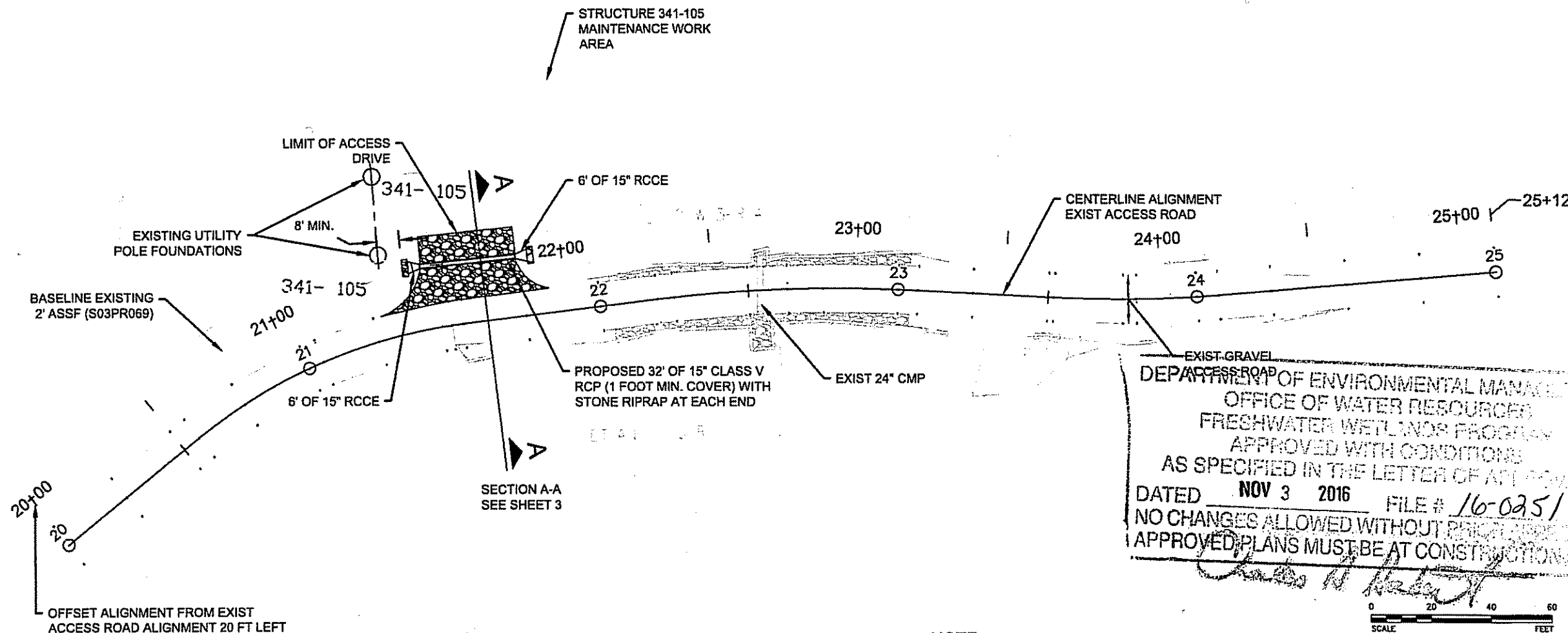
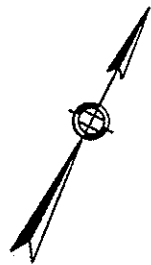
0 50 100 200  
 Feet

NOT FOR CONSTRUCTION

**nationalgrid**  
**AECOM**

Date: 9/06/2016

PLOT DATE: September 1, 2016  
 FILEPATH: X:\60147352-IRP National Grid\900-WORKING DOCS-CAD\20-SHEETS\60147352 SHT 3-7 Struct 341-105 PLAN.dwg



DEPARTMENT OF ENVIRONMENTAL MANAGEMENT  
 OFFICE OF WATER RESOURCES  
 FRESHWATER WETLANDS PROGRAM  
 APPROVED WITH CONDITIONS  
 AS SPECIFIED IN THE LETTER OF APPROVAL  
 DATED NOV 3 2016 FILE # 16-0251  
 NO CHANGES ALLOWED WITHOUT PERIODIC APPROVAL  
 APPROVED PLANS MUST BE AT CONSTRUCTION



**NOTE:**  
 REFERENCE IS MADE TO THE FOLLOWING PLAN SET FOR ALL BASE MAPPING, AERIAL MAPPING, SURVEY STANDARDS, EXISTING POLE STRUCTURES, WETLAND DELINEATION SURVEY, LEGEND AND NOTES, TYPICAL SECTIONS, AND MISCELLANEOUS DETAILS:  
 "The Narragansett Electric Co. d/b/a National Grid Interstate Reliability Project North Smithfield & Burrillville, Rhode Island RI DEM Application No. 12-0117", BY AECOM, Date Issued: July 27, 2012, Latest Issue: September 20, 2013.

Environmental Management  
**SEP 30 2016**  
 Office of Water Resources

**AECOM**  
 TRANSPORTATION  
 AECOM TECHNICAL SERVICES, Inc.  
 500 ENTERPRISE DR STE 3B  
 ROCKY HILL, CONNECTICUT 06067  
 PHONE: 860.529.8882  
 www.aecom.com

**NOT FOR CONSTRUCTION**

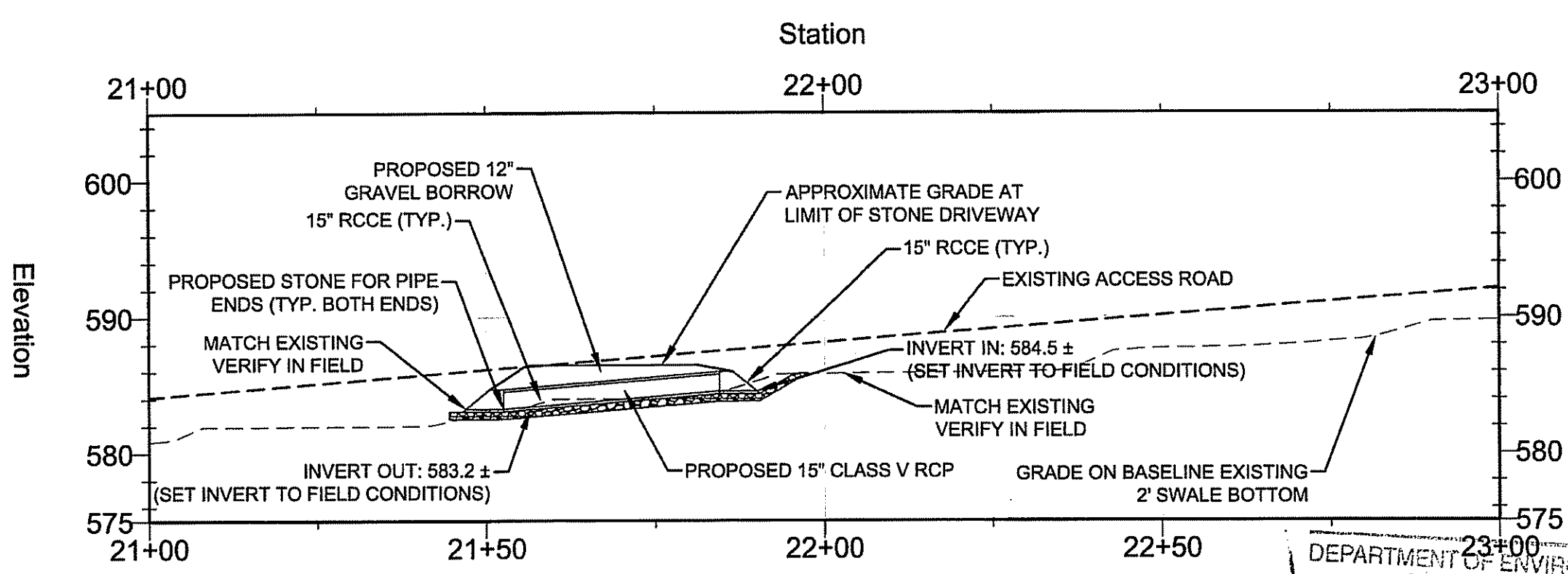
**JEFFREY J. KEEFE**  
 No. 6464  
 REGISTERED PROFESSIONAL ENGINEER (CIVIL)

INTERSTATE RELIABILITY PROJECT  
 NEW CULVERT NEAR STRUCTURE 341-105

DRAWN BY:	CHECKED BY:	DATE:	PROJECT NUMBER:
JT	MG	Sep. 1, 2016	60147352

FIGURE NUMBER:
341-105 PLAN
SHEET NUMBER:
1

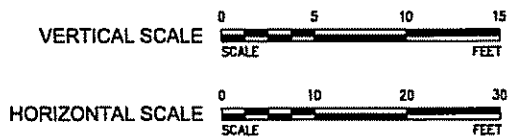
PLOT DATE: September 1, 2016  
 FILEPATH: X:\60147352-IRP National Grid\900-WORKING DOCS-CAD\20-SHEETS\60147352 SHT 3-7 Struct 341-105 PLAN.dwg



BASELINE EXISTING 2' ASSF (SEE SHEET 1)

DEPARTMENT OF ENVIRONMENTAL CONTROL  
 OFFICE OF WATER RESOURCES  
 FRESHWATER WETLANDS PERMIT  
 APPROVED WITH CONDITIONS  
 AS SPECIFIED IN THE LETTER OF APPROVAL  
 DATED NOV 3 2016 FILE # 16-0251  
 NO CHANGES ALLOWED WITHOUT PRIOR APPROVAL  
 APPROVED PLANS MUST BE AT CONSTRUCTION SITE  
*Charles H. [Signature]*

Environmental Management  
**SEP 30 2016**  
 Office of Water Resources



**AECOM**  
 TRANSPORTATION  
 AECOM TECHNICAL SERVICES, Inc.  
 500 ENTERPRISE DR STE 3B  
 ROCKY HILL, CONNECTICUT 06067  
 PHONE: 860.529.8882  
 www.aecom.com

**NOT FOR CONSTRUCTION**

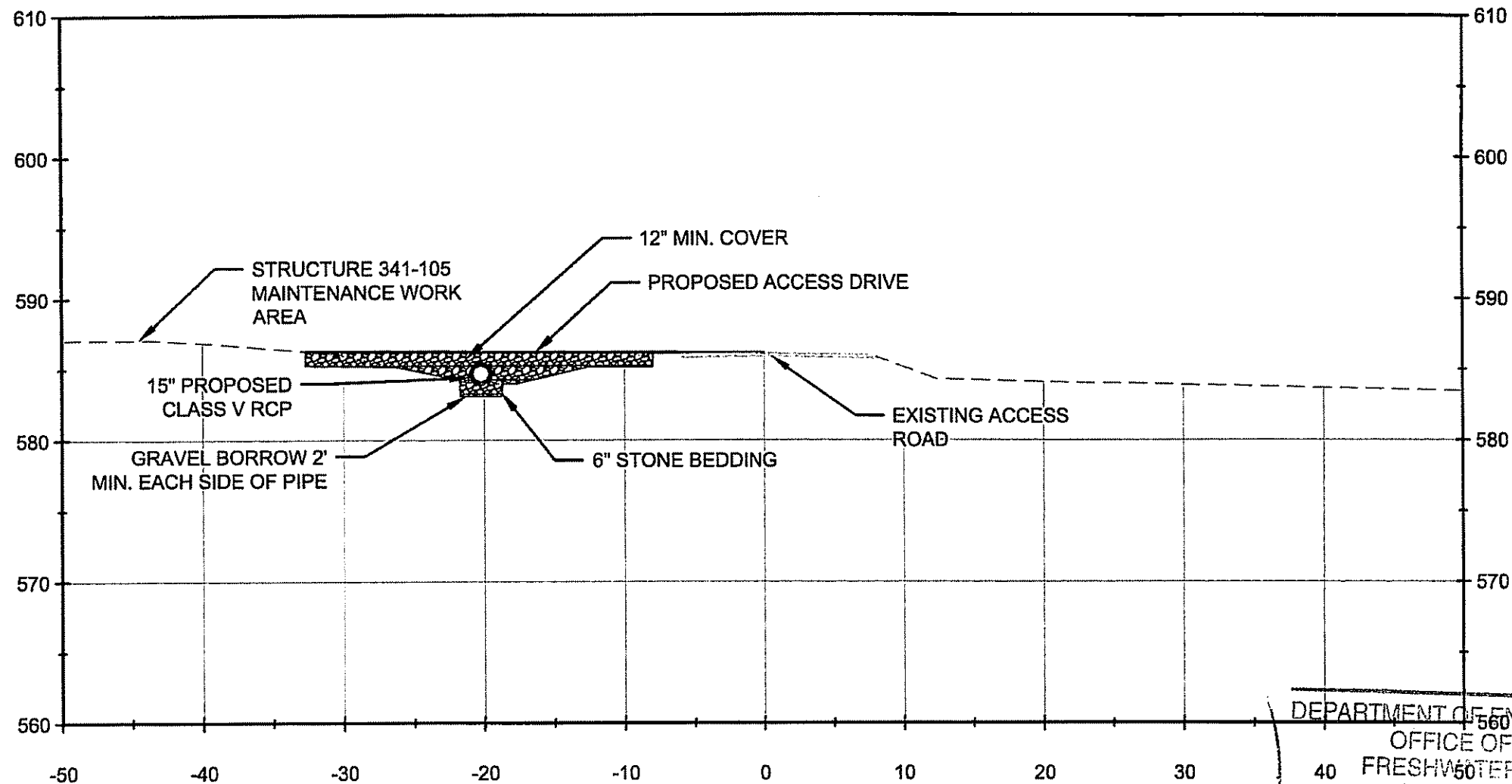
**JEFFREY J. KEEFE**  
 No. 6464  
 REGISTERED PROFESSIONAL ENGINEER (CIVIL)

INTERSTATE RELIABILITY PROJECT  
 NEW CULVERT NEAR STRUCTURE 341-105

DRAWN BY:	CHECKED BY:	DATE:	PROJECT NUMBER:
JT	MG	Sep. 1, 2016	60147352

FIGURE NUMBER:
2' SWALE ALIGNMENT
SHEET NUMBER:
2

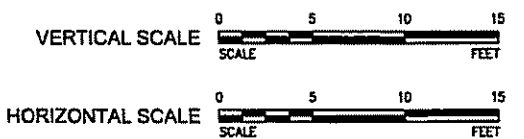
PLOT DATE: September 1, 2016  
 FILEPATH: X:\60147352-IRP National Grid\900-WORKING DOCS-CAD\20-SHEETS\60147352 SHT 3-7 Struct 341-105 PLAN.dwg



DEPARTMENT OF ENVIRONMENTAL MANAGEMENT  
 OFFICE OF WATER RESOURCES  
 40 FRESHWATER WETLANDS PROGRAM  
 APPROVED WITH CONDITIONS  
 AS SPECIFIED IN THE LETTER OF APPROVAL  
 DATED NOV 3 2016 FILE # 16-0251  
 NO CHANGES ALLOWED WITHOUT PRIOR APPROVAL  
 APPROVED PLANS MUST BE AT CONSTRUCTION SITE

*Charles A. Kelleher*

## SECTION A - A



Environmental Management  
 SEP 30 2016  
 Office of Water Resources

**AECOM**  
 TRANSPORTATION  
 AECOM TECHNICAL SERVICES, Inc.  
 500 ENTERPRISE DR STE 3B  
 ROCKY HILL, CONNECTICUT 06067  
 PHONE: 860.529.8882  
 www.aecom.com

**NOT FOR CONSTRUCTION**

**JEFFREY J. KEEFE**  
 No. 6464  
 REGISTERED PROFESSIONAL ENGINEER (CIVIL)

INTERSTATE RELIABILITY PROJECT  
 NEW CULVERT NEAR STRUCTURE 341-105

DRAWN BY:	CHECKED BY:	DATE:	PROJECT NUMBER:
JT	MG	Sep. 1, 2016	60147352

FIGURE NUMBER:
341-105 SECTION A-A
SHEET NUMBER:
3