



USGS Mapping 2015: Pawtucket Quadrangle

DEPARTMENT OF ENVIRONMENTAL MANAGEMENT  
 OFFICE OF WATER RESOURCES  
 FRESHWATER WETLANDS PROGRAM  
 APPROVED WITH CONDITIONS  
 AS SPECIFIED IN THE LETTER OF APPROVAL  
 DATED DEC 09 2015 FILE # 16-0263  
 NO CHANGES ALLOWED WITHOUT PRIOR APPROVAL  
 APPROVED PLANS MUST BE AT CONSTRUCTION SITE

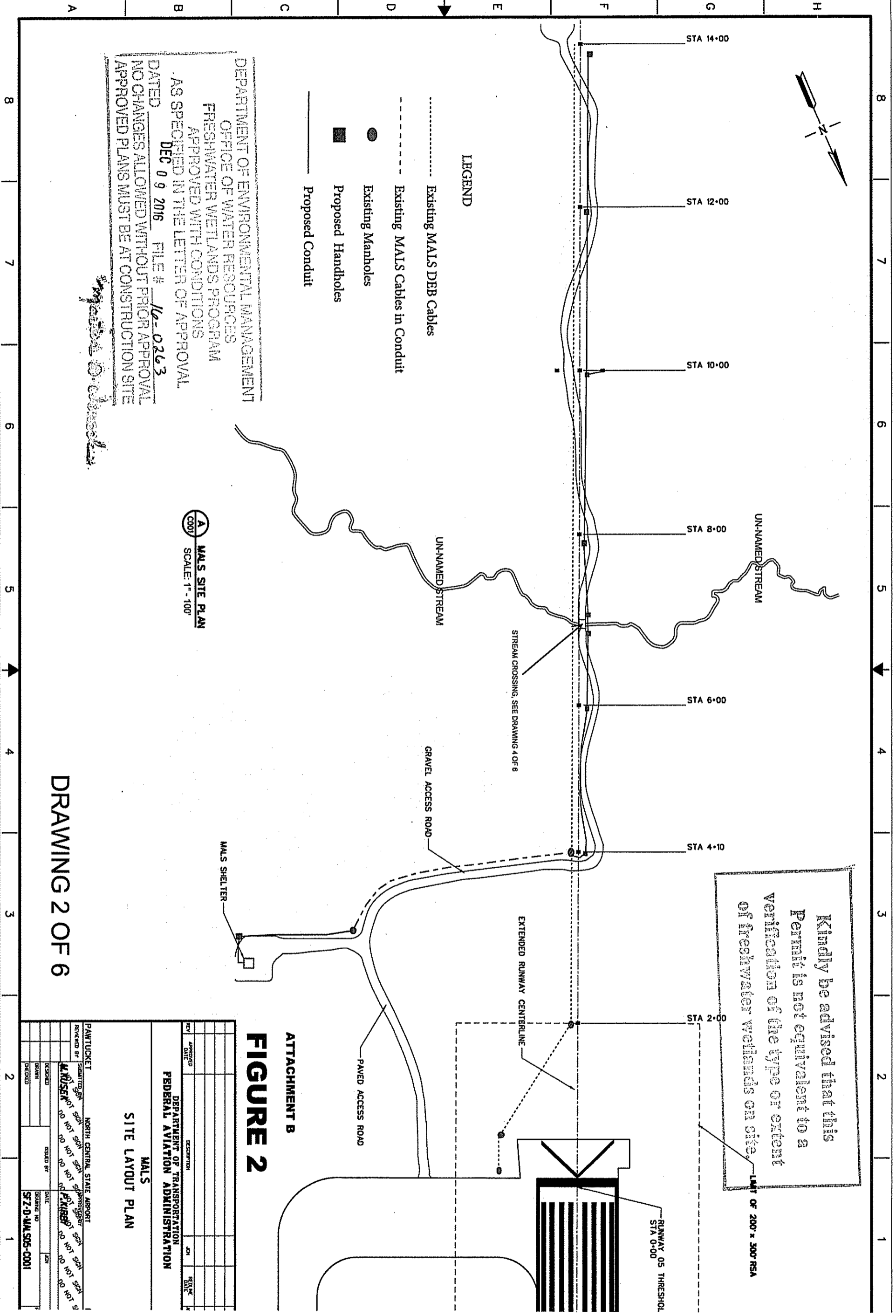
ATTACHMENT B

# FIGURE 1

# SFZ RW5 MALS

DRAWING 1 OF 6

Environmental Management  
 NOV 07 2016  
 Office of Water Resources



Kindly be advised that this Permit is not equivalent to a verification of the type or extent of freshwater wetlands on site.

LIMIT OF 200' x 300' RSA

DEPARTMENT OF ENVIRONMENTAL MANAGEMENT  
OFFICE OF WATER RESOURCES  
FRESHWATER WETLANDS PROGRAM  
APPROVED WITH CONDITIONS  
AS SPECIFIED IN THE LETTER OF APPROVAL  
DATED DEC 09 2016 FILE # 16-0263  
NO CHANGES ALLOWED WITHOUT PRIOR APPROVAL  
APPROVED PLANS MUST BE AT CONSTRUCTION SITE

- LEGEND**
- Existing MALS DEB Cables
  - Existing MALS Cables in Conduit
  - Existing Manholes
  - Proposed Handholes
  - \_\_\_\_\_ Proposed Conduit

**A** MALS SITE PLAN  
SCALE: 1" = 100'

DRAWING 2 OF 6

**FIGURE 2**  
ATTACHMENT B

REV	APPROVED	DATE	DESCRIPTION	JOB	SCALE

DEPARTMENT OF TRANSPORTATION  
FEDERAL AVIATION ADMINISTRATION

MALS  
SITE LAYOUT PLAN

REV	APPROVED	DATE	DESCRIPTION	JOB	SCALE

PAWTUCKET NORTH CENTRAL STATE AIRPORT

DESIGNED BY: **AKENSEN** CHECKED BY: **AKENSEN**

ISSUED BY: **AKENSEN** DATE: **12/09/2016**

PROJECT NO: **ST 2-D-MALS 505-C001**

Environmental Management  
NOV 07 2016  
Office of Water Resources

DEPARTMENT OF ENVIRONMENTAL MANAGEMENT  
 OFFICE OF WATER RESOURCES  
 FRESHWATER WETLANDS PROGRAM  
 APPROVED WITH CONDITIONS  
 AS SPECIFIED IN THE LETTER OF APPROVAL  
 DATED DEC 09 2016 FILE # 16-0263  
 NO CHANGES ALLOWED WITHOUT PRIOR APPROVAL  
 APPROVED PLANS MUST BE AT CONSTRUCTION SITE

Kindly be advised that this  
 Permit is not equivalent to a  
 verification of the type or extent  
 of freshwater wetlands on site.



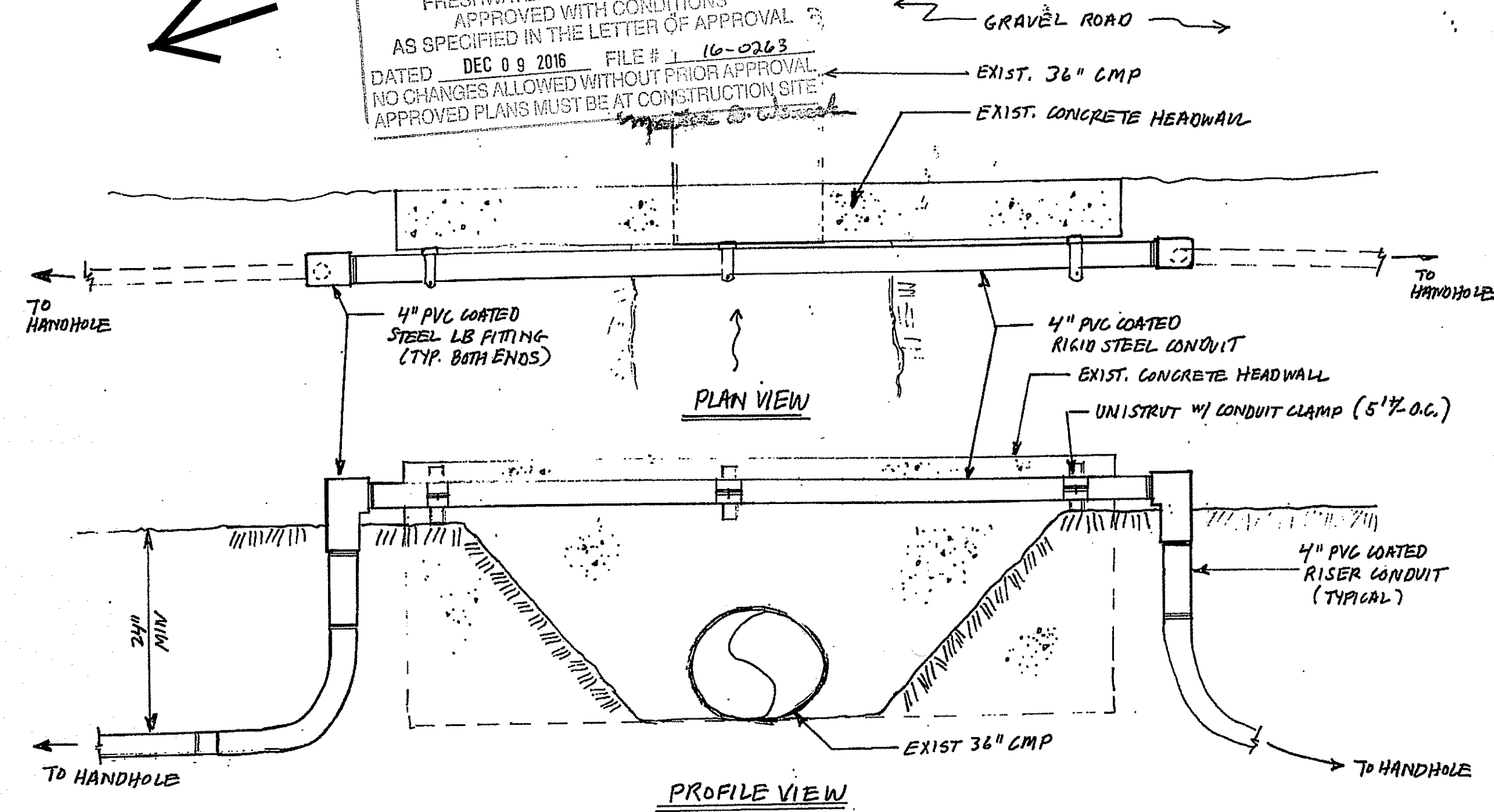
ATTACHMENT B  
**FIGURE 3**

NOV 07 2016  
 Office of Water Resources

NORTH  
←

DEPARTMENT OF ENVIRONMENTAL MANAGEMENT  
OFFICE OF WATER RESOURCES  
FRESHWATER WETLANDS PROGRAM  
APPROVED WITH CONDITIONS  
AS SPECIFIED IN THE LETTER OF APPROVAL  
DATED DEC 09 2016 FILE # 16-0263  
NO CHANGES ALLOWED WITHOUT PRIOR APPROVAL  
APPROVED PLANS MUST BE AT CONSTRUCTION SITE

Environmental Management  
NOV 07 2016  
Office of Water Resources

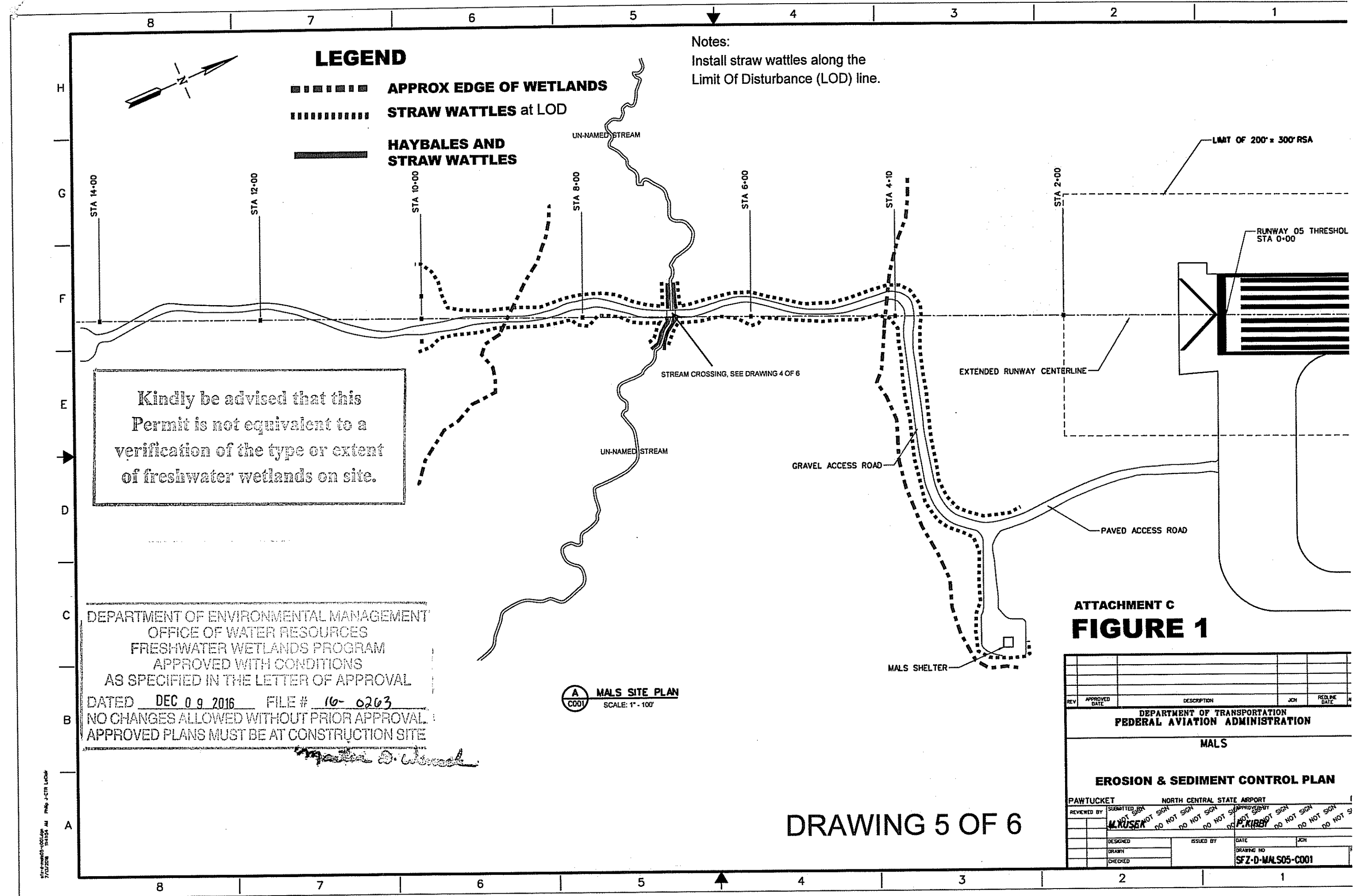


### DRAWING 4 OF 6

RUNWAY 5 MALS REPAIRS  
NORTH CENTRAL STATE AIRPORT

CONDUIT AT  
STREAM CROSSING  
NTS

ATTACHMENT B  
FIGURE 4



DRAWING 5 OF 6

ATTACHMENT C  
FIGURE 1

REV	APPROVED DATE	DESCRIPTION	CHK	REQ'D DATE

DEPARTMENT OF TRANSPORTATION  
FEDERAL AVIATION ADMINISTRATION

MALS

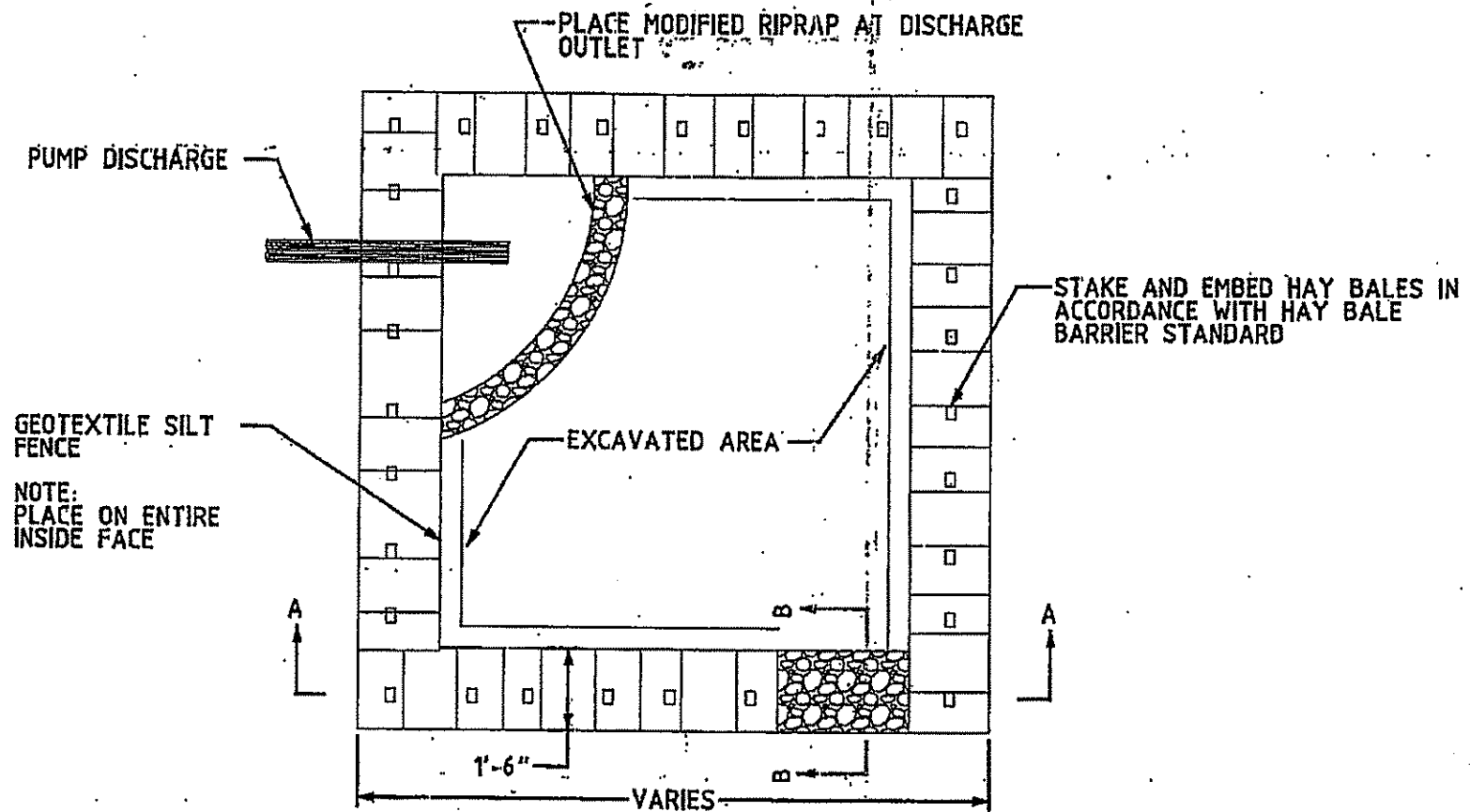
**EROSION & SEDIMENT CONTROL PLAN**

PAWTUCKET NORTH CENTRAL STATE AIRPORT

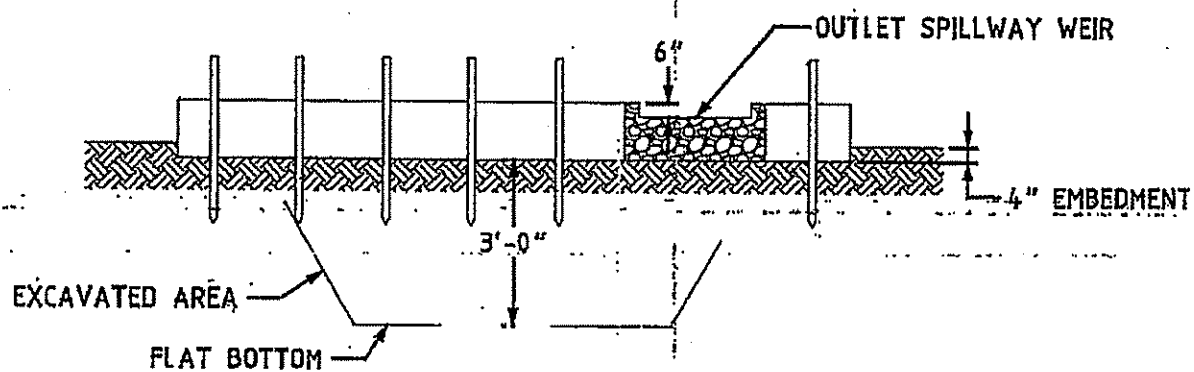
REVIEWED BY	SUBMITTED SIGN	DO NOT SIGN	DO NOT SIGN	DO NOT SIGN	DO NOT SIGN	DO NOT SIGN	DO NOT SIGN	DO NOT SIGN	DO NOT SIGN	DO NOT SIGN
M. ROSEN										
DESIGNED	DATE	CHK	ISSUED BY	DATE	CHK	DRAWING NO				
DRAWN						SFZ-D-MALS05-C001				
CHECKED										

Environmental Management  
NOV 07 2016  
Office of Water Resources

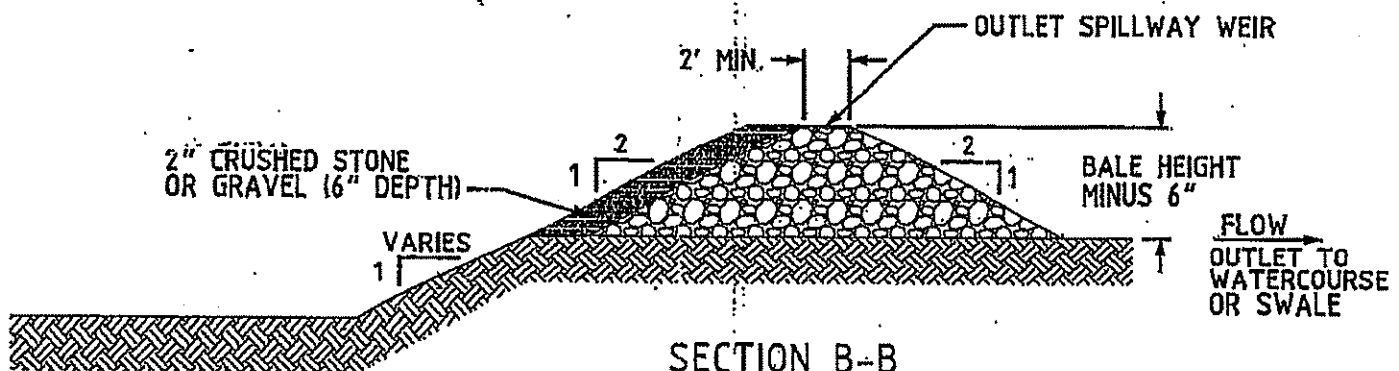
# DRAWING 6 OF 6



PLAN  
(NOT TO SCALE)



SECTION A-A  
(NOT TO SCALE)



SECTION B-B  
(NOT TO SCALE)

## DEWATERING SETTLING BASIN

DEPARTMENT OF ENVIRONMENTAL MANAGEMENT  
OFFICE OF WATER RESOURCES  
FRESHWATER WETLANDS PROGRAM  
APPROVED WITH CONDITIONS  
AS SPECIFIED IN THE LETTER OF APPROVAL  
DATED DEC 09 2016 FILE # 16-0263  
NO CHANGES ALLOWED WITHOUT PRIOR APPROVAL  
APPROVED PLANS MUST BE AT CONSTRUCTION SITE

*Master D. Whelan*

# FIGURE 2 DEWATERING-SETTLING BASIN

Environmental Management

NOV 07 2016

Office of Water Resources