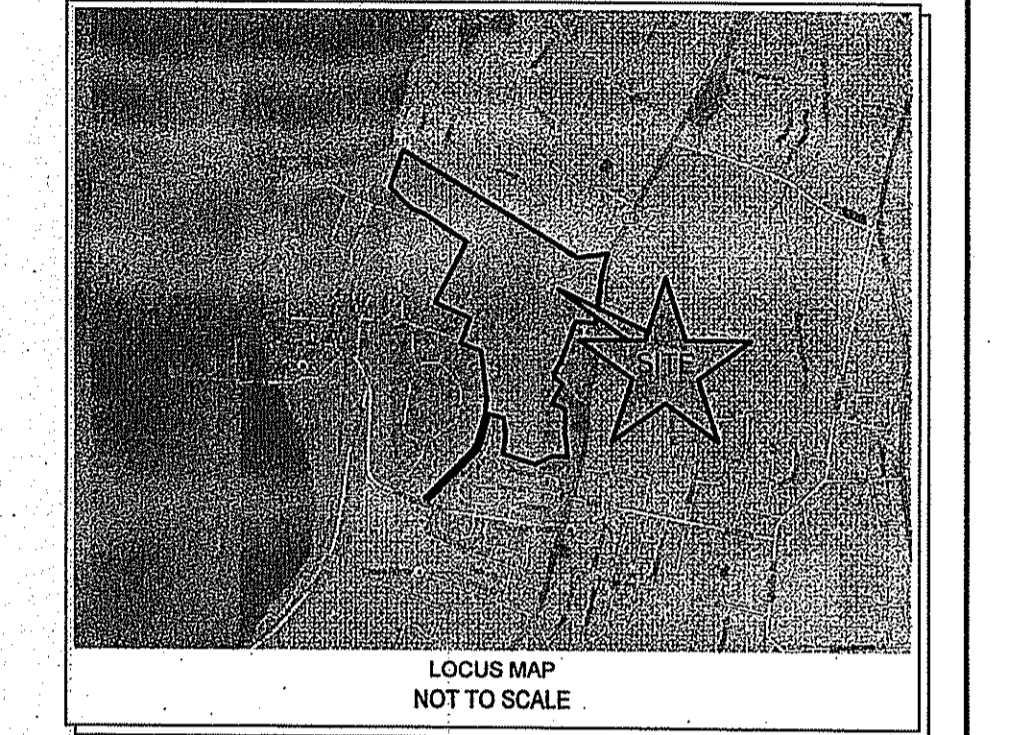


A KNOWLEDGE CORPORATION®

55 JOHN CLARKE ROAD MIDDLETOWN RHODE ISLAND 02842
 PHONE (401) 849-0810 FAX (401) 846-4169
 WWW.NORTHEASTENGINEERS.COM

SITE/CIVIL
 LAND PLANNING
 WATERFRONT
 SURVEYING
 GEOTECHNICAL
 ENVIRONMENTAL
 TRANSPORTATION
 STRUCTURAL



DEPARTMENT OF ENVIRONMENTAL MANAGEMENT
 OFFICE OF WATER RESOURCES
 FRESHWATER WETLANDS PROGRAM
 APPROVED WITH CONDITIONS
 AS SPECIFIED IN THE LETTER OF APPROVAL
 DATED **MAR 17 2017** FILE # **16-0297**
 NO CHANGES ALLOWED WITHOUT PRIOR APPROVAL
 APPROVED PLANS MUST BE AT CONSTRUCTION SITE

Martin D. Wenzel

No.	Revision	Date	App.
1	RIDEM WETLANDS COMMENTS	16JAN17	

Designed By: JJR Drawn by: VAL Checked by: GES
 Scale: 1"=50' Date: 13OCT16

Project Title:
**MELVILLE PONDS CAMPGROUND
 A.P. 43 & LOT 1A
 181 BRADFORD AVENUE
 PORTSMOUTH, RHODE ISLAND 02871**

Client/Owner:
 JUSTIN MAY
 41 SAWMILL ROAD
 PO BOX 425, HOPE VALLEY, RI 02832

Issued for:
 PERMITTING

Drawing Title:
**EXISTING CONDITIONS
 SHEET 1**

Drawing Number:
C-1

Sheet **1** of **9**

Project Number:
15190.0

Survey Index:
 -

REGINALD SMALL
 No. 8550
 1-24-17
 REGISTERED PROFESSIONAL ENGINEER
 CIVIL

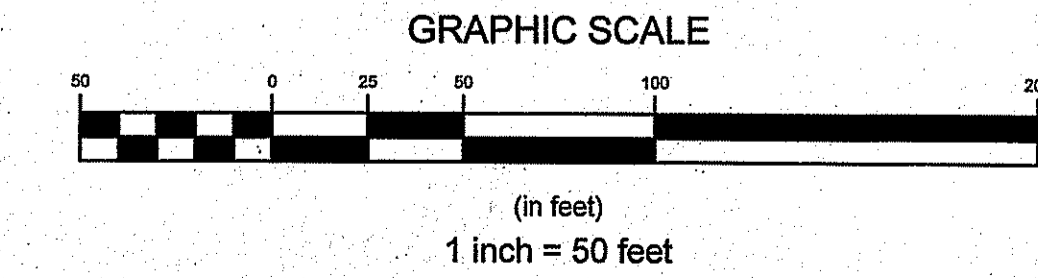
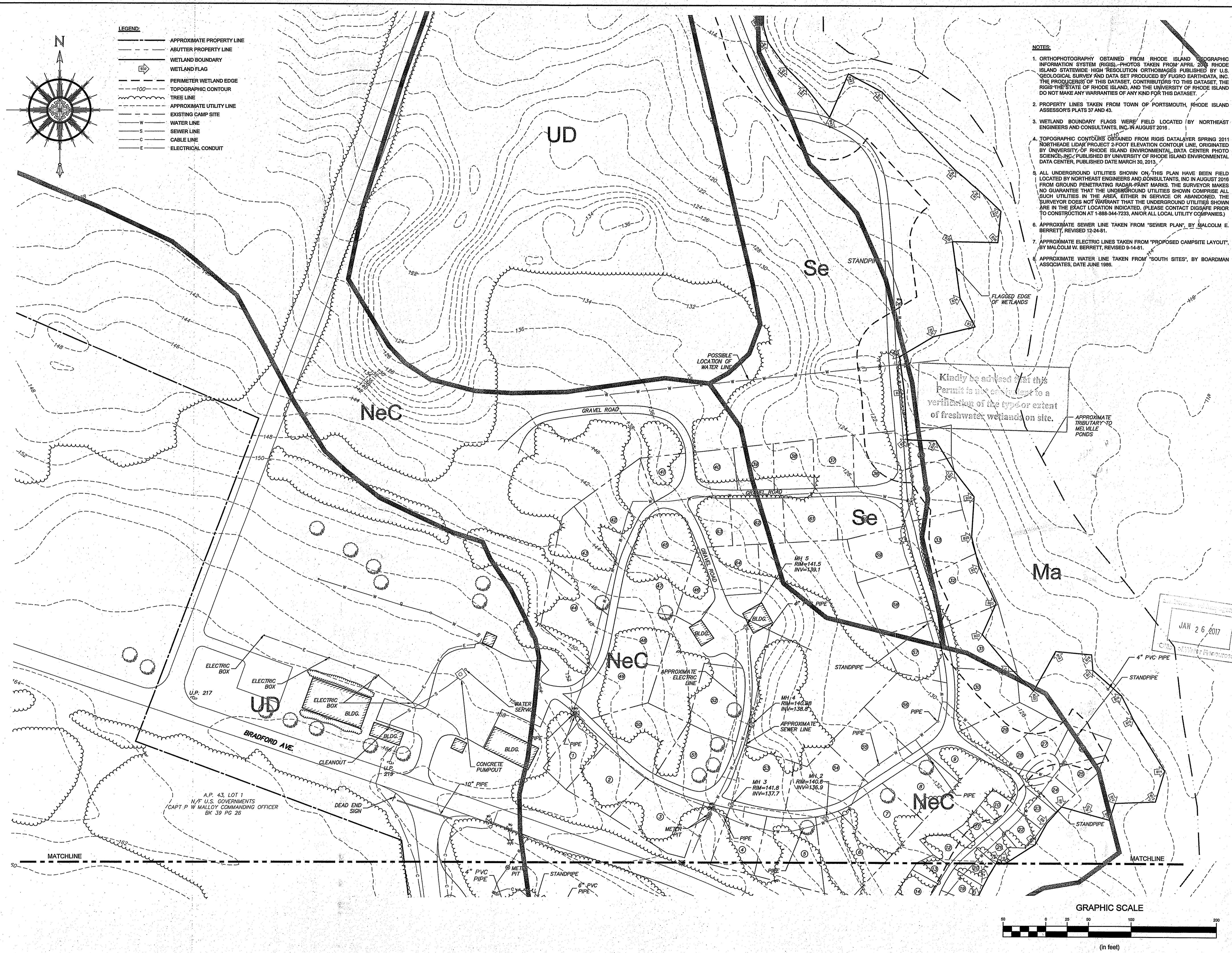
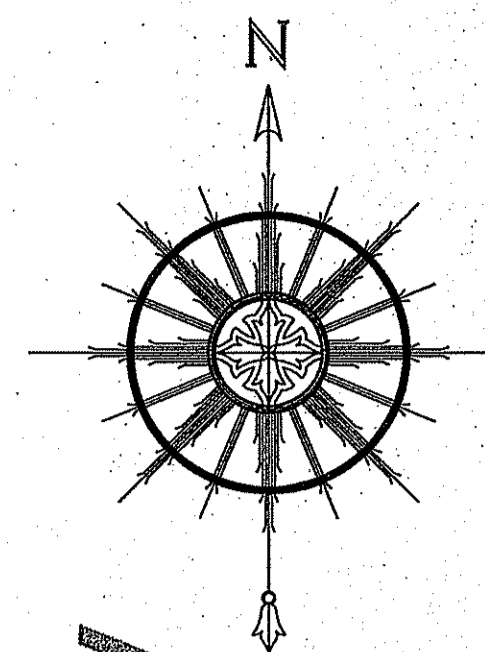
OWNERSHIP AND USE OF DOCUMENTS: DRAWINGS AND SPECIFICATIONS, AS INSTRUMENTS OF PROFESSIONAL SERVICE, ARE AND SHALL REMAIN THE PROPERTY OF THE ENGINEER. THESE DOCUMENTS ARE NOT TO BE USED, IN WHOLE OR PART, FOR ANY OTHER PROJECTS OR PURPOSES, OR BY ANY OTHER PARTIES, THAN THOSE PROPERLY AUTHORIZED BY CONTRACT, WITHOUT THE EXPRESS AUTHORIZATION OF THE ENGINEER.

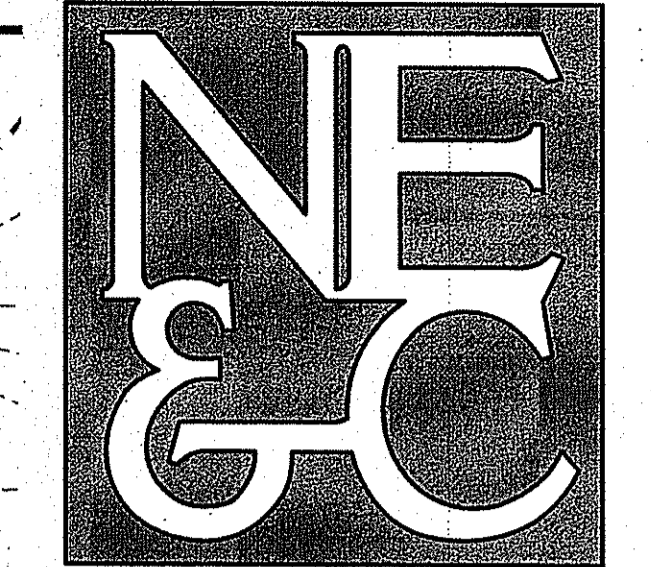
- NOTES:**
1. ORTHOPHOTOGRAPHY OBTAINED FROM RHODE ISLAND GEOGRAPHIC INFORMATION SYSTEM (RIGIS), PHOTOS TAKEN FROM APRIL 2004, RHODE ISLAND STATEWIDE HIGH RESOLUTION ORTHOPHOTOS PUBLISHED BY U.S. GEOLOGICAL SURVEY AND DATA SET PRODUCED BY FUGRO EARTHDATA, INC. (THE PRODUCERS) OF THIS DATASET, CONTRIBUTORS TO THIS DATASET, THE RIGIS-THE STATE OF RHODE ISLAND, AND THE UNIVERSITY OF RHODE ISLAND DO NOT MAKE ANY WARRANTIES OF ANY KIND FOR THIS DATASET.
 2. PROPERTY LINES TAKEN FROM TOWN OF PORTSMOUTH, RHODE ISLAND ASSESSOR'S PLATS 37 AND 43.
 3. WETLAND BOUNDARY FLAGS WERE FIELD LOCATED BY NORTHEAST ENGINEERS AND CONSULTANTS, INC. IN AUGUST 2016.
 4. TOPOGRAPHIC CONTOURS OBTAINED FROM RIGIS DATALAYER SPRING 2011 NORTHEAST LIDAR PROJECT 2-FOOT ELEVATION CONTOUR LINE, ORIGINATED BY UNIVERSITY OF RHODE ISLAND ENVIRONMENTAL DATA CENTER PHOTO SCIENCES, INC.; PUBLISHED BY UNIVERSITY OF RHODE ISLAND ENVIRONMENTAL DATA CENTER, PUBLISHED DATE MARCH 30, 2013.
 5. ALL UNDERGROUND UTILITIES SHOWN ON THIS PLAN HAVE BEEN FIELD LOCATED BY NORTHEAST ENGINEERS AND CONSULTANTS, INC. IN AUGUST 2016 FROM GROUND PENETRATING RADAR-PAINT MARKS. THE SURVEYOR MAKES NO GUARANTEE THAT THE UNDERGROUND UTILITIES SHOWN COMPRISE ALL SUCH UTILITIES IN THE AREA, EITHER IN SERVICE OR ABANDONED. THE SURVEYOR DOES NOT WARRANT THAT THE UNDERGROUND UTILITIES SHOWN ARE IN THE EXACT LOCATION INDICATED. (PLEASE CONTACT DIGSAFE PRIOR TO CONSTRUCTION AT 1-888-344-7233, AND/OR ALL LOCAL UTILITY COMPANIES.)
 6. APPROXIMATE SEWER LINE TAKEN FROM "SEWER PLAN", BY MALCOLM E. BERRETT, REVISED 12-24-81.
 7. APPROXIMATE ELECTRIC LINES TAKEN FROM "PROPOSED CAMPSITE LAYOUT", BY MALCOLM W. BERRETT, REVISED 9-14-81.
 8. APPROXIMATE WATER LINE TAKEN FROM "SOUTH SITES", BY BOARDMAN ASSOCIATES, DATE JUNE 1986.

Kindly be advised that this Permit is not contingent to a verification of the type or extent of freshwater wetlands on site.

JAN 26 2017
 Civil Engineering Department

- LEGEND:**
- APPROXIMATE PROPERTY LINE
 - ABUTTER PROPERTY LINE
 - WETLAND BOUNDARY
 - WETLAND FLAG
 - PERIMETER WETLAND EDGE
 - TOPOGRAPHIC CONTOUR
 - TREE LINE
 - APPROXIMATE UTILITY LINE
 - EXISTING CAMP SITE
 - WATER LINE
 - SEWER LINE
 - CABLE LINE
 - ELECTRICAL CONDUIT

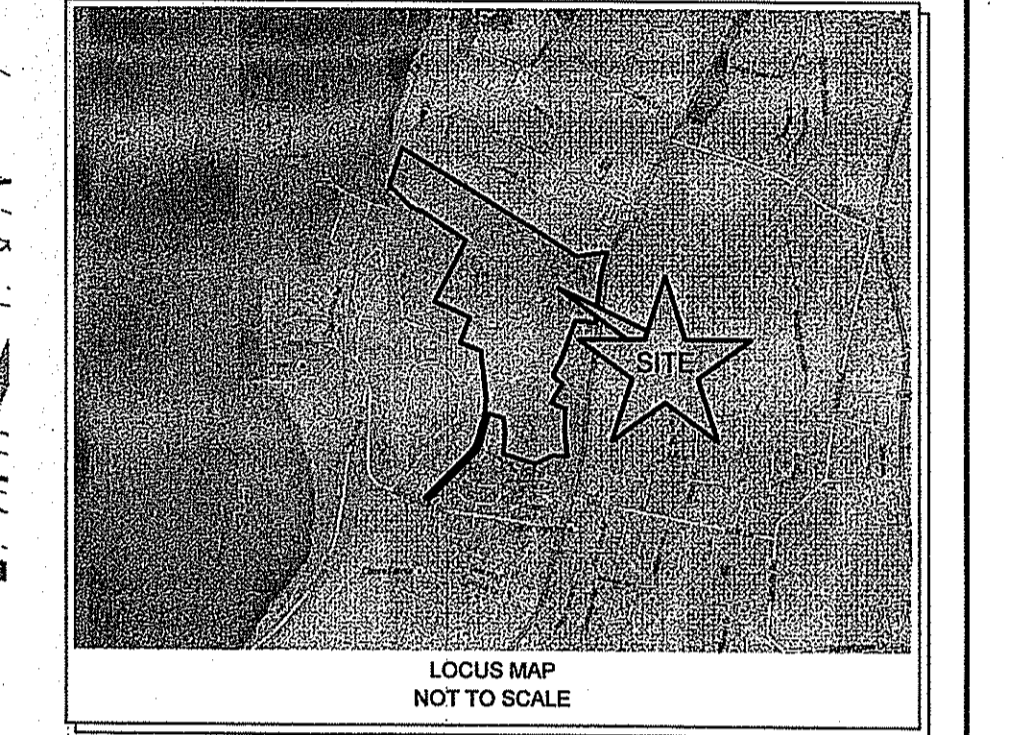




A KNOWLEDGE CORPORATION®

55 JOHN CLARKE ROAD MIDDLETOWN RHODE ISLAND 02842
 PHONE (401) 849-0810 FAX (401) 846-4169
 WWW.NORTHEASTENGINEERS.COM

SITE/CIVIL
 LAND PLANNING
 WATERFRONT
 SURVEYING
 GEOTECHNICAL
 ENVIRONMENTAL
 TRANSPORTATION
 STRUCTURAL



LOCUS MAP
 NOT TO SCALE

DEPARTMENT OF ENVIRONMENTAL MANAGEMENT
 OFFICE OF WATER RESOURCES
 FRESHWATER WETLANDS PROGRAM
 APPROVED WITH CONDITIONS
 AS SPECIFIED IN THE LETTER OF APPROVAL
 DATED MAR 17 2017 FILE # 16-0297
 NO CHANGES ALLOWED WITHOUT PRIOR APPROVAL
 APPROVED PLANS MUST BE AT CONSTRUCTION SITE

Matthew D. Wenzel

No.	Revision	Date	App.
1	Revised	16JAN17	
2	Revised		
3	Revised		
4	Revised		
5	Revised		
6	Revised		
7	Revised		
8	Revised		

Designed By: JJR Drawn by: VAL Checked by: GES
 Scale: 1"=50' Date: 13OCT16

Project Title:
**MELVILLE PONDS CAMPGROUND
 A.P. 43 & LOT 1A
 181 BRADFORD AVENUE
 PORTSMOUTH, RHODE ISLAND 02871**

Client/Owner:
 JUSTIN MAY
 41 SAWMILL ROAD
 PO BOX 425, HOPE VALLEY, RI 02832

Issued for:
 PERMITTING

Drawing Title:
**EXISTING CONDITIONS
 SHEET 2**

Drawing Number:
C-2

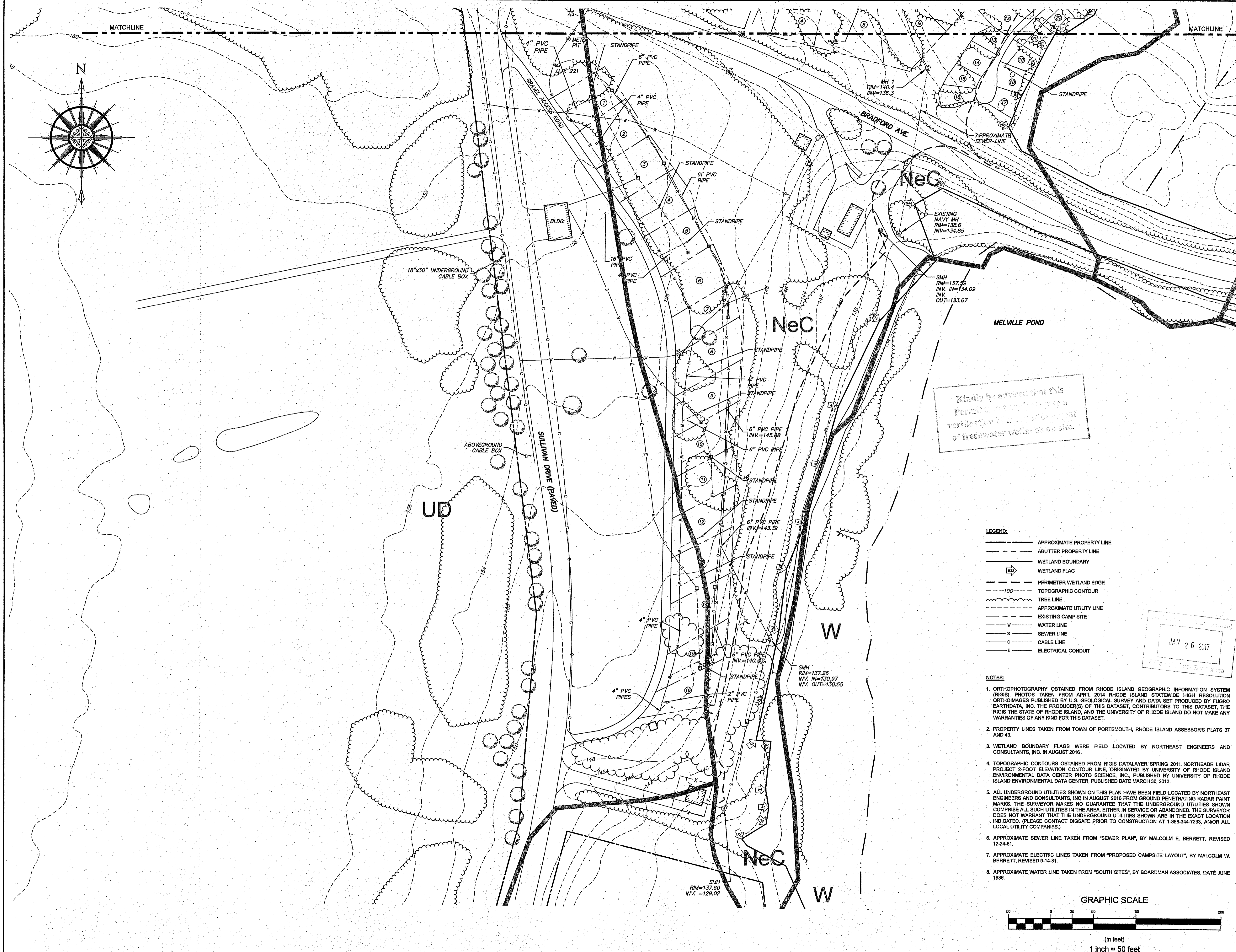
Sheet **2** of **9**

Project Number:
15190.0

Survey Index:
 - -

Professional Engineer Seal:
 GERALD E. SMALL
 No. 8550
 1-24-17
 REGISTERED PROFESSIONAL ENGINEER
 CIVIL

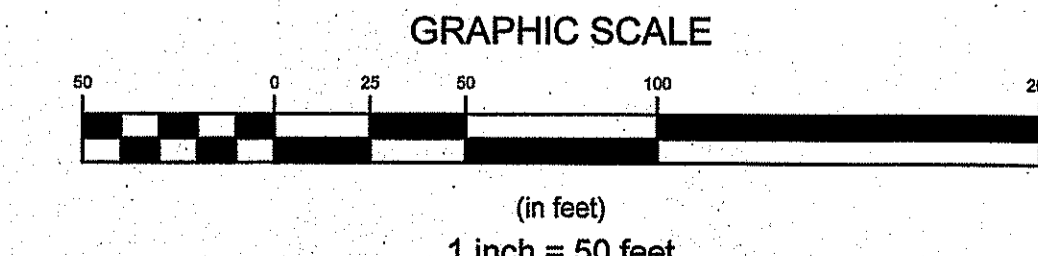
OWNERSHIP AND USE OF DOCUMENTS: DRAWINGS AND SPECIFICATIONS, AS INSTRUMENTS OF PROFESSIONAL SERVICE, ARE AND SHALL REMAIN THE PROPERTY OF THE ENGINEER. THESE DOCUMENTS ARE NOT TO BE USED, IN WHOLE OR PART, FOR ANY OTHER PROJECTS OR PURPOSES, OR BY ANY OTHER PARTIES, THAN THOSE PROPERLY AUTHORIZED BY CONTRACT, WITHOUT THE EXPRESS AUTHORIZATION OF THE ENGINEER.

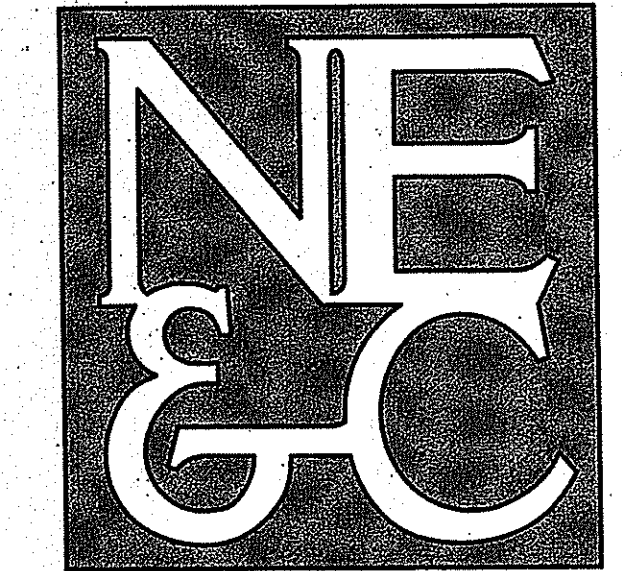


Kindly be advised that this Permit is not valid until a verification of the type and extent of freshwater wetlands on site.

- LEGEND:**
- APPROXIMATE PROPERTY LINE
 - ABUTTER PROPERTY LINE
 - WETLAND BOUNDARY
 - WETLAND FLAG
 - PERIMETER WETLAND EDGE
 - 100--- TOPOGRAPHIC CONTOUR
 - TREE LINE
 - APPROXIMATE UTILITY LINE
 - EXISTING CAMP SITE
 - W WATER LINE
 - S SEWER LINE
 - C CABLE LINE
 - E ELECTRICAL CONDUIT

- NOTES:**
- ORTHOGRAPHY OBTAINED FROM RHODE ISLAND GEOGRAPHIC INFORMATION SYSTEM (RIGIS). PHOTOS TAKEN FROM APRIL 2014 RHODE ISLAND STATEWIDE HIGH RESOLUTION ORTHOIMAGES PUBLISHED BY U.S. GEOLOGICAL SURVEY AND DATA SET PRODUCED BY FUGRO EARTHDATA, INC. THE PRODUCER(S) OF THIS DATASET, CONTRIBUTORS TO THIS DATASET, THE RIGIS THE STATE OF RHODE ISLAND, AND THE UNIVERSITY OF RHODE ISLAND DO NOT MAKE ANY WARRANTIES OF ANY KIND FOR THIS DATASET.
 - PROPERTY LINES TAKEN FROM TOWN OF PORTSMOUTH, RHODE ISLAND ASSESSOR'S PLATS 37 AND 43.
 - WETLAND BOUNDARY FLAGS WERE FIELD LOCATED BY NORTHEAST ENGINEERS AND CONSULTANTS, INC. IN AUGUST 2016.
 - TOPOGRAPHIC CONTOURS OBTAINED FROM RIGIS DATALAYER SPRING 2011 NORTHEAST LIDAR PROJECT 2-FOOT ELEVATION CONTOUR LINE, ORIGINATED BY UNIVERSITY OF RHODE ISLAND ENVIRONMENTAL DATA CENTER PHOTO SCIENCE, INC., PUBLISHED BY UNIVERSITY OF RHODE ISLAND ENVIRONMENTAL DATA CENTER, PUBLISHED DATE MARCH 30, 2013.
 - ALL UNDERGROUND UTILITIES SHOWN ON THIS PLAN HAVE BEEN FIELD LOCATED BY NORTHEAST ENGINEERS AND CONSULTANTS, INC. IN AUGUST 2016 FROM GROUND PENETRATING RADAR PAINT MARKS. THE SURVEYOR MAKES NO GUARANTEE THAT THE UNDERGROUND UTILITIES SHOWN COMPRISE ALL SUCH UTILITIES IN THE AREA, EITHER IN SERVICE OR ABANDONED. THE SURVEYOR DOES NOT WARRANT THAT THE UNDERGROUND UTILITIES SHOWN ARE IN THE EXACT LOCATION INDICATED. (PLEASE CONTACT DIGSAFE PRIOR TO CONSTRUCTION AT 1-888-344-7233, AND/OR ALL LOCAL UTILITY COMPANIES).
 - APPROXIMATE SEWER LINE TAKEN FROM "SEWER PLAN", BY MALCOLM E. BERRETT, REVISED 12-24-81.
 - APPROXIMATE ELECTRIC LINES TAKEN FROM "PROPOSED CAMPSITE LAYOUT", BY MALCOLM W. BERRETT, REVISED 9-14-81.
 - APPROXIMATE WATER LINE TAKEN FROM "SOUTH SITES", BY BOARDMAN ASSOCIATES, DATE JUNE 1986.

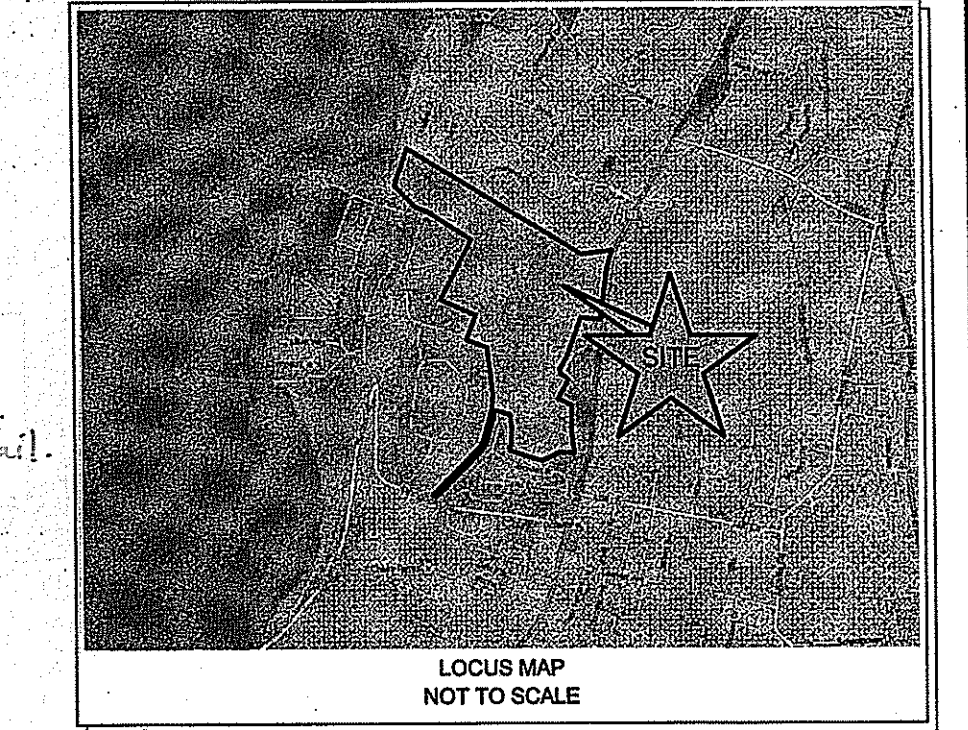




A KNOWLEDGE CORPORATION®

55 JOHN CLARKE ROAD MIDDLETOWN RHODE ISLAND 02842
 PHONE (401) 849-0810 FAX (401) 846-4169
 WWW.NORTHEASTENGINEERS.COM

SITE/CIVIL
 LAND PLANNING
 WATERFRONT
 SURVEYING
 GEOTECHNICAL
 ENVIRONMENTAL
 TRANSPORTATION
 STRUCTURAL



DEPARTMENT OF ENVIRONMENTAL MANAGEMENT
 OFFICE OF WATER RESOURCES
 FRESHWATER WETLANDS PROGRAM
 APPROVED WITH CONDITIONS
 AS SPECIFIED IN THE LETTER OF APPROVAL
 DATED MAR 17 2017 FILE # 16-0297
 NO CHANGES ALLOWED WITHOUT PRIOR APPROVAL
 APPROVED PLANS MUST BE AT CONSTRUCTION SITE

Matthew D. Wensch

2	RIDEM WETLANDS COMMENTS	27FEB17	
1	RIDEM WETLANDS COMMENTS	16JAN17	
No.	Revision	Date	App.
Designed By:	JJR	Drawn by:	VAL
Checked by:	GES	Scale:	1"=50'
Date:	13OCT16		

Project Title:
MELVILLE PONDS CAMPGROUND
A.P. 43 & LOT 1A
 181 BRADFORD AVENUE
 PORTSMOUTH, RHODE ISLAND 02871

Client/Owner:
JUSTIN MAY
 41 SAWMILL ROAD
 PO BOX 425, HOPE VALLEY, RI 02832

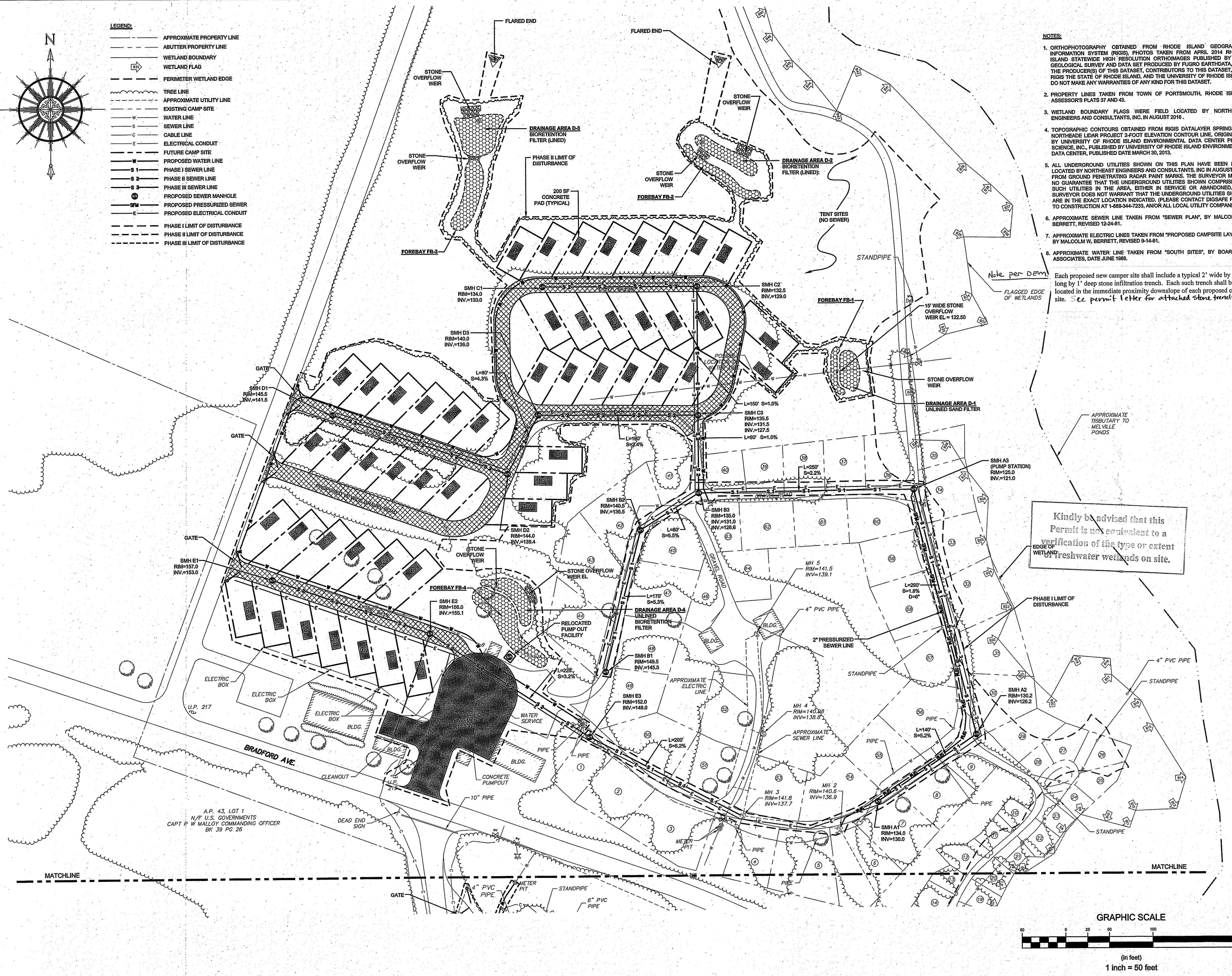
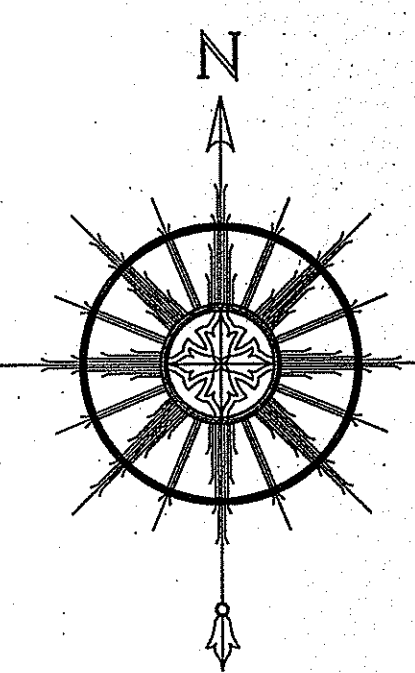
Issued for:
PERMITTING

Drawing Title:
LAYOUT AND UTILITY PLAN
SHEET 1

Drawing Number:
C-3
 Sheet **3** of **9**
 Project Number:
15190.0
 Survey Index:
 -

OWNERSHIP AND USE OF DOCUMENTS: DRAWINGS AND SPECIFICATIONS, AS INSTRUMENTS OF PROFESSIONAL SERVICE, ARE AND SHALL REMAIN THE PROPERTY OF THE ENGINEER. THESE DOCUMENTS ARE NOT TO BE USED, IN WHOLE OR PART, FOR ANY OTHER PROJECTS OR PURPOSES, OR BY ANY OTHER PARTIES, THAN THOSE PROPERLY AUTHORIZED BY CONTRACT, WITHOUT THE EXPRESS AUTHORIZATION OF THE ENGINEER.

- LEGEND:**
- APPROXIMATE PROPERTY LINE
 - ABUTTER PROPERTY LINE
 - - - WETLAND BOUNDARY
 - WETLAND FLAG
 - - - PERIMETER WETLAND EDGE
 - TREE LINE
 - APPROXIMATE UTILITY LINE
 - EXISTING CAMP SITE
 - WATER LINE
 - SEWER LINE
 - CABLE LINE
 - ELECTRICAL CONDUIT
 - FUTURE CAMP SITE
 - PROPOSED WATER LINE
 - S 1 --- PHASE I SEWER LINE
 - S 2 --- PHASE II SEWER LINE
 - S 3 --- PHASE III SEWER LINE
 - S --- PROPOSED SEWER MANHOLE
 - SM --- PROPOSED PRESSURIZED SEWER
 - E --- PROPOSED ELECTRICAL CONDUIT
 - PHASE I LIMIT OF DISTURBANCE
 - PHASE II LIMIT OF DISTURBANCE
 - PHASE III LIMIT OF DISTURBANCE

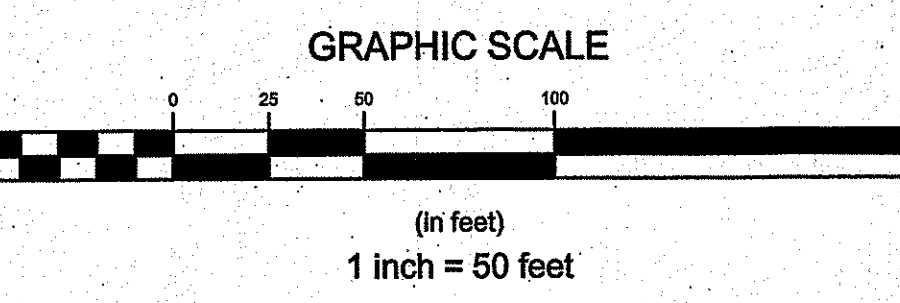


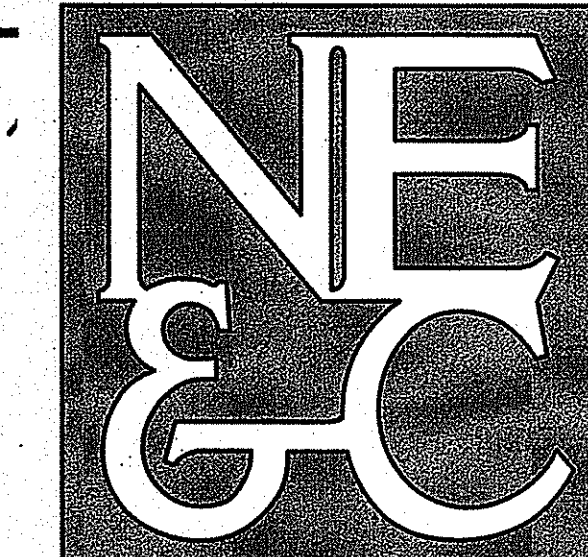
Kindly be advised that this Permit is not equivalent to a verification of the type or extent of freshwater wetlands on site.

- NOTES:**
- ORTHOGRAPHY OBTAINED FROM RHODE ISLAND GEOGRAPHIC INFORMATION SYSTEM (RIGS). PHOTOS TAKEN FROM APRIL 2014 RHODE ISLAND STATEWIDE HIGH RESOLUTION ORTHOMAPS PUBLISHED BY U.S. GEOLOGICAL SURVEY AND DATA SET PRODUCED BY FUGRO EARTHDATA, INC. THE PRODUCERS OF THIS DATASET, CONTRIBUTORS TO THIS DATASET, THE RIGS THE STATE OF RHODE ISLAND, AND THE UNIVERSITY OF RHODE ISLAND DO NOT MAKE ANY WARRANTIES OF ANY KIND FOR THIS DATASET.
 - PROPERTY LINES TAKEN FROM TOWN OF PORTSMOUTH, RHODE ISLAND ASSESSOR'S PLATS 57 AND 45.
 - WETLAND BOUNDARY FLAGS WERE FIELD LOCATED BY NORTHEAST ENGINEERS AND CONSULTANTS, INC. IN AUGUST 2016.
 - TOPOGRAPHIC CONTOURS OBTAINED FROM RIGS DATALAYER SPRING 2011 NORTHEAST LIDAR PROJECT 2-FOOT ELEVATION CONTOUR LINE, ORIGINATED BY UNIVERSITY OF RHODE ISLAND ENVIRONMENTAL DATA CENTER PHOTO SCIENCE, INC. PUBLISHED BY UNIVERSITY OF RHODE ISLAND ENVIRONMENTAL DATA CENTER, PUBLISHED DATE MARCH 30, 2013.
 - ALL UNDERGROUND UTILITIES SHOWN ON THIS PLAN HAVE BEEN FIELD LOCATED BY NORTHEAST ENGINEERS AND CONSULTANTS, INC. IN AUGUST 2016 FROM GROUND PENETRATING RADAR POINT MARKS. THE SURVEYOR MAKES NO GUARANTEE THAT THE UNDERGROUND UTILITIES SHOWN COMPRISE ALL SUCH UTILITIES IN THE AREA, EITHER IN SERVICE OR ABANDONED. THE SURVEYOR DOES NOT WARRANT THAT THE UNDERGROUND UTILITIES SHOWN ARE IN THE EXACT LOCATION INDICATED. PLEASE CONTACT DISAFAE PRIOR TO CONSTRUCTION AT 1-888-344-7233, AND/OR ALL LOCAL UTILITY COMPANIES.
 - APPROXIMATE SEWER LINE TAKEN FROM "SEWER PLAN", BY MALCOLM E. BERRETT, REVISED 12-24-81.
 - APPROXIMATE ELECTRIC LINES TAKEN FROM "PROPOSED CAMP SITE LAYOUT", BY MALCOLM W. BERRETT, REVISED 9-14-81.
 - APPROXIMATE WATER LINE TAKEN FROM "SOUTH SITES", BY BOARDMAN ASSOCIATES, DATE JUNE 1980.

Each proposed new camper site shall include a typical 2' wide by 10' long by 1' deep stone infiltration trench. Each such trench shall be located in the immediate proximity downslope of each proposed camper site. See permit letter for attached stone trench details.

Note per DEM: Each proposed new camper site shall include a typical 2' wide by 10' long by 1' deep stone infiltration trench. Each such trench shall be located in the immediate proximity downslope of each proposed camper site. See permit letter for attached stone trench details.

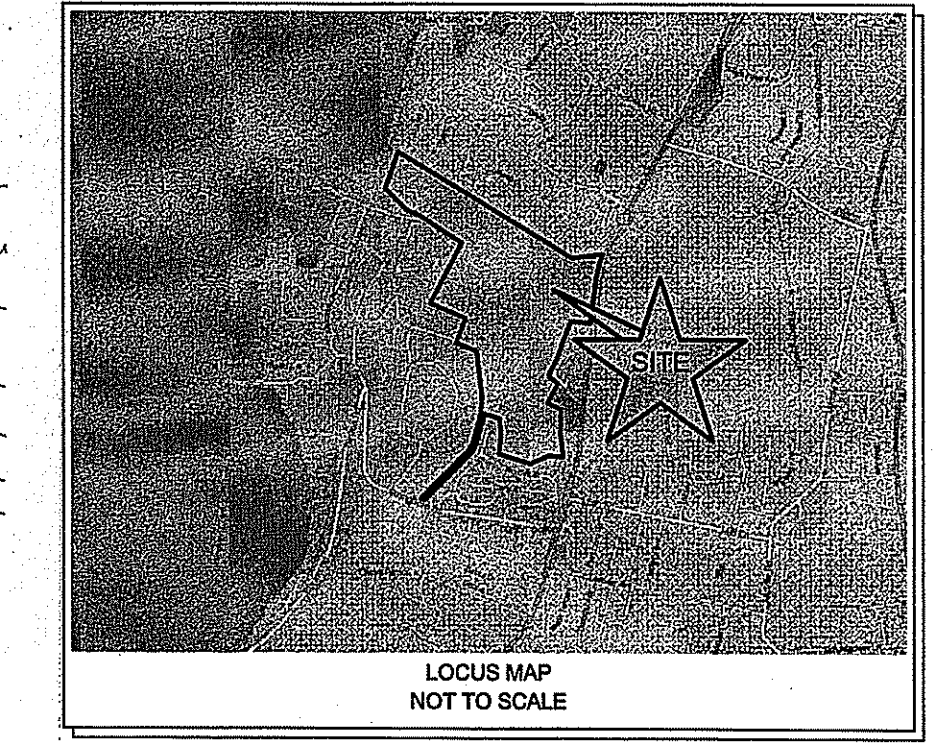




SITE/CIVIL
LAND PLANNING
WATERFRONT
SURVEYING
GEOTECHNICAL
ENVIRONMENTAL
TRANSPORTATION
STRUCTURAL

A KNOWLEDGE CORPORATION®

55 JOHN CLARKE ROAD MIDDLETOWN RHODE ISLAND 02842
PHONE (401) 849-0810 FAX (401) 846-4169
WWW.NORTHEASTENGINEERS.COM



DEPARTMENT OF ENVIRONMENTAL MANAGEMENT
OFFICE OF WATER RESOURCES
FRESHWATER WETLANDS PROGRAM
APPROVED WITH CONDITIONS
AS SPECIFIED IN THE LETTER OF APPROVAL
DATED **MAR 17 2017** FILE # **16-0297**
NO CHANGES ALLOWED WITHOUT PRIOR APPROVAL
APPROVED PLANS MUST BE AT CONSTRUCTION SITE
Cynthia D. Wenzel

2	RIDEM WETLANDS COMMENTS	27FEB17			
1	RIDEM WETLANDS COMMENTS	16JAN17			
No.	Revision	Date	App.		
Designed By:	JJR	Drawn by:	VAL	Checked by:	GES
Scale:	1"=50'	Date:	13OCT16		

Project Title:
**MELVILLE PONDS CAMPGROUND
A.P. 43 & LOT 1A
181 BRADFORD AVENUE
PORTSMOUTH, RHODE ISLAND 02871**

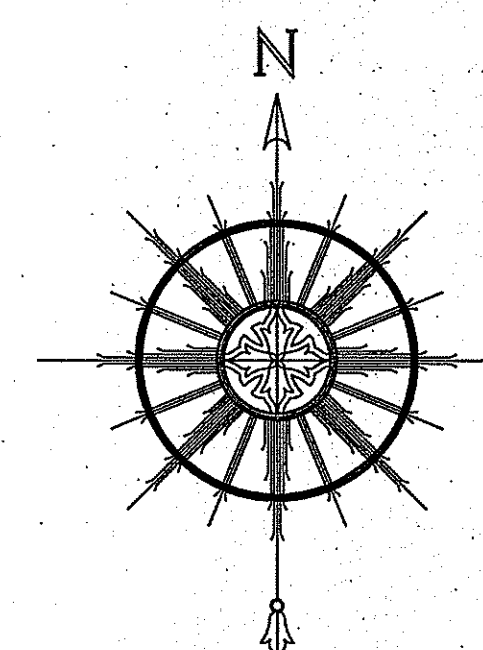
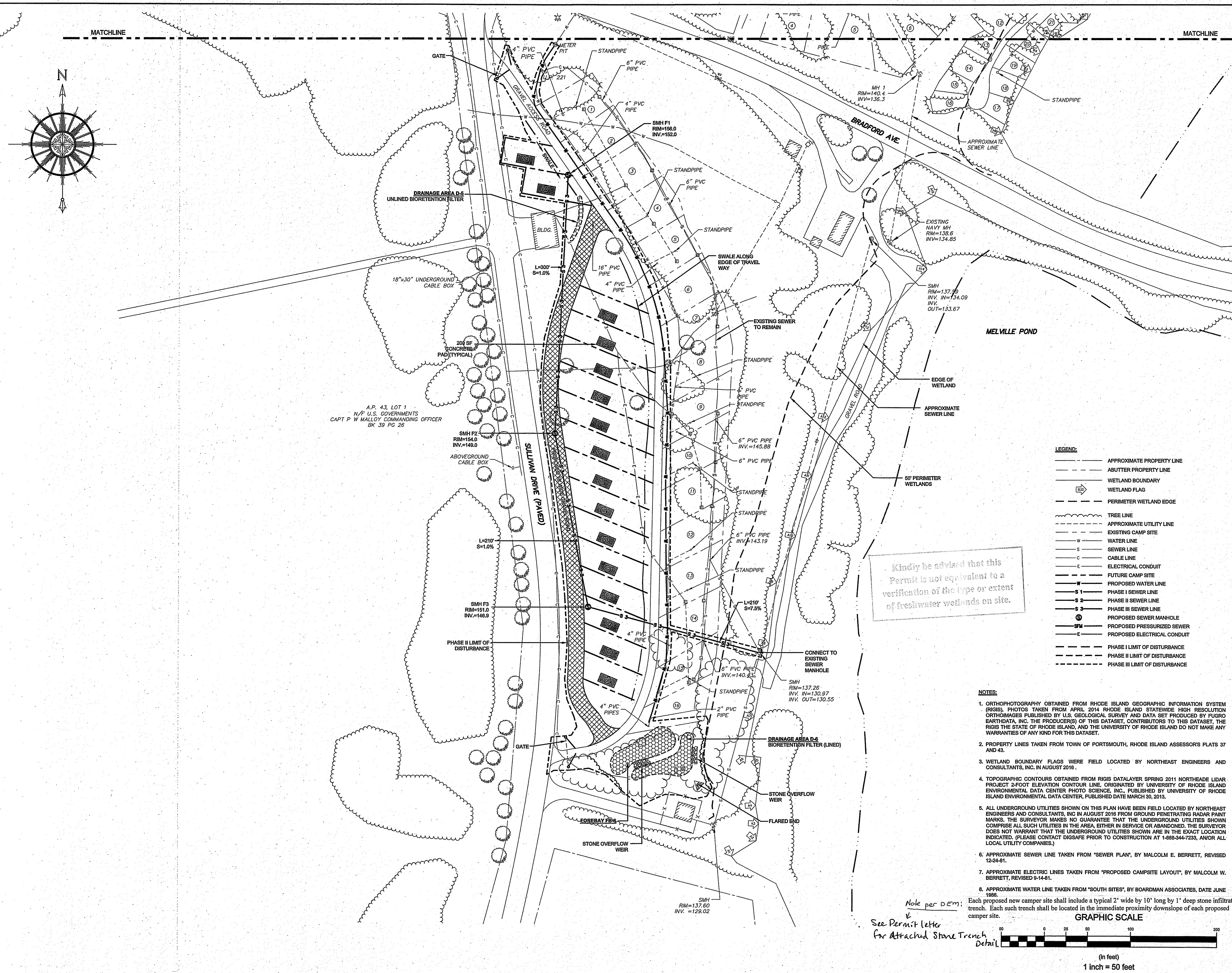
Client/Owner:
**JUSTIN MAY
41 SAWMILL ROAD
PO BOX 425, HOPE VALLEY, RI 02832**

Issued for:
PERMITTING

Drawing Title:
**LAYOUT AND UTILITY PLAN
SHEET 2**

	Drawing Number:	C-4
	Sheet	4 of 9
	Project Number:	15190.0
	Survey Index:	-

OWNERSHIP AND USE OF DOCUMENTS: DRAWINGS AND SPECIFICATIONS, AS INSTRUMENTS OF PROFESSIONAL SERVICE, ARE AND SHALL REMAIN THE PROPERTY OF THE ENGINEER. THESE DOCUMENTS ARE NOT TO BE USED, IN WHOLE OR PART, FOR ANY OTHER PROJECTS OR PURPOSES, OR BY ANY OTHER PARTIES, THAN THOSE PROPERLY AUTHORIZED BY CONTRACT, WITHOUT THE EXPRESS AUTHORIZATION OF THE ENGINEER.



- LEGEND:**
- APPROXIMATE PROPERTY LINE
 - ABUTTER PROPERTY LINE
 - WETLAND BOUNDARY
 - WETLAND FLAG
 - PERIMETER WETLAND EDGE
 - TREE LINE
 - APPROXIMATE UTILITY LINE
 - EXISTING CAMP SITE
 - W WATER LINE
 - S SEWER LINE
 - C CABLE LINE
 - E ELECTRICAL CONDUIT
 - W FUTURE CAMP SITE
 - W PROPOSED WATER LINE
 - S-1 PHASE I SEWER LINE
 - S-2 PHASE II SEWER LINE
 - S-3 PHASE III SEWER LINE
 - SM PROPOSED SEWER MANHOLE
 - SPM PROPOSED PRESSURIZED SEWER
 - E PROPOSED ELECTRICAL CONDUIT
 - PHASE I LIMIT OF DISTURBANCE
 - PHASE II LIMIT OF DISTURBANCE
 - PHASE III LIMIT OF DISTURBANCE

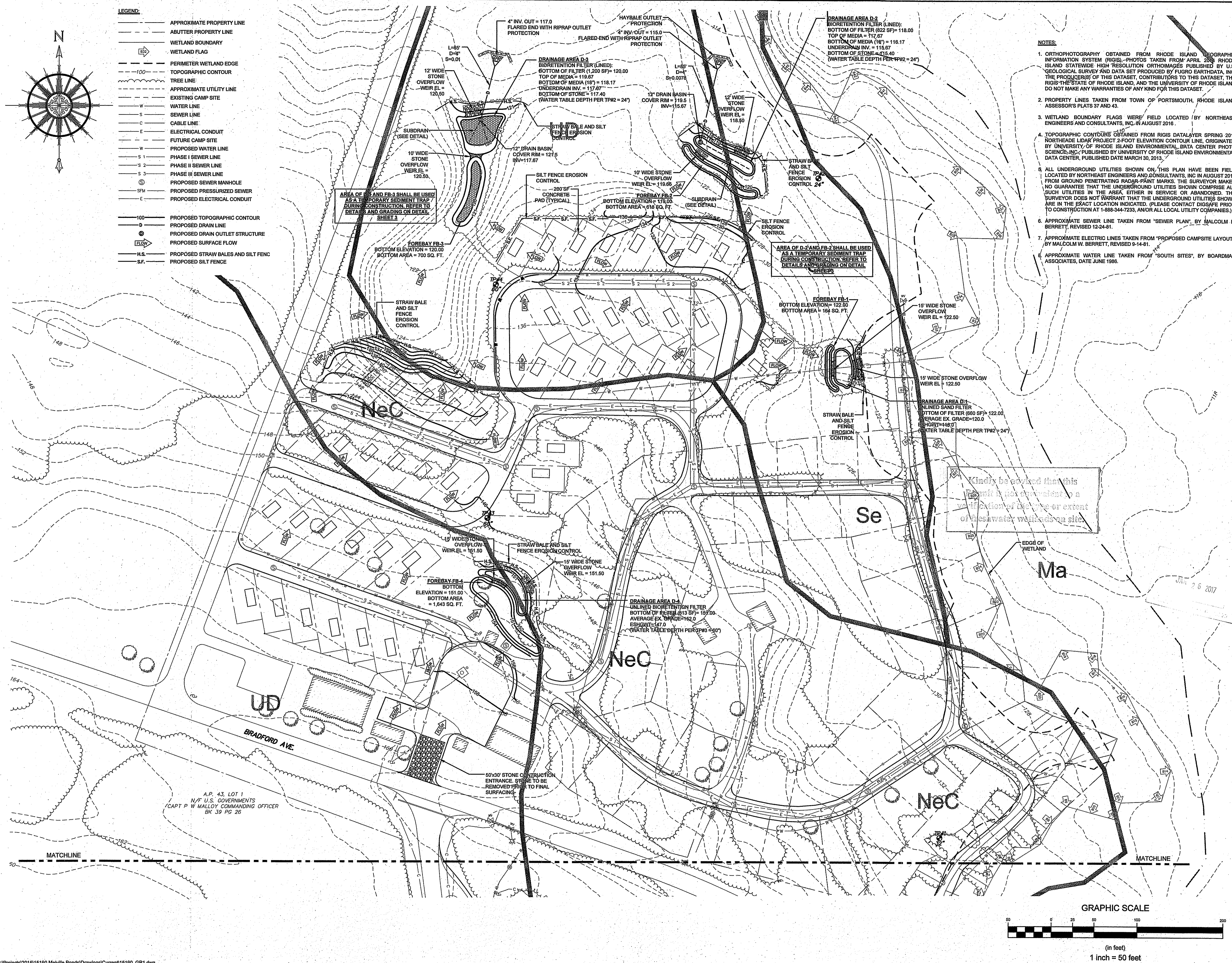
Kindly be advised that this permit is not equivalent to a verification of the type or extent of freshwater wetlands on site.

- NOTES:**
- ORTHOPHOTOGRAPHY OBTAINED FROM RHODE ISLAND GEOGRAPHIC INFORMATION SYSTEM (RIGIS). PHOTOS TAKEN FROM APRIL 2014 RHODE ISLAND STATEWIDE HIGH RESOLUTION ORTHOMAGES PUBLISHED BY U.S. GEOLOGICAL SURVEY AND DATA SET PRODUCED BY RUGRO EARTHDATA, INC. THE PRODUCER(S) OF THIS DATASET, CONTRIBUTORS TO THIS DATASET, THE RIGIS THE STATE OF RHODE ISLAND, AND THE UNIVERSITY OF RHODE ISLAND DO NOT MAKE ANY WARRANTIES OF ANY KIND FOR THIS DATASET.
 - PROPERTY LINES TAKEN FROM TOWN OF PORTSMOUTH, RHODE ISLAND ASSESSOR'S PLATS 37 AND 43.
 - WETLAND BOUNDARY FLAGS WERE FIELD LOCATED BY NORTHEAST ENGINEERS AND CONSULTANTS, INC. IN AUGUST 2016.
 - TOPOGRAPHIC CONTOURS OBTAINED FROM RIGIS DATALAYER SPRING 2011 NORTHEAST LIDAR PROJECT 2-FOOT ELEVATION CONTOUR LINE, ORIGINATED BY UNIVERSITY OF RHODE ISLAND ENVIRONMENTAL DATA CENTER PHOTO SCIENCE, INC., PUBLISHED BY UNIVERSITY OF RHODE ISLAND ENVIRONMENTAL DATA CENTER, PUBLISHED DATE MARCH 30, 2013.
 - ALL UNDERGROUND UTILITIES SHOWN ON THIS PLAN HAVE BEEN FIELD LOCATED BY NORTHEAST ENGINEERS AND CONSULTANTS, INC. IN AUGUST 2016 FROM GROUND PENETRATING RADAR PAINT MARKS. THE SURVEYOR MAKES NO GUARANTEE THAT THE UNDERGROUND UTILITIES SHOWN COMPRISE ALL SUCH UTILITIES IN THE AREA, EITHER IN SERVICE OR ABANDONED. THE SURVEYOR DOES NOT WARRANT THAT THE UNDERGROUND UTILITIES SHOWN ARE IN THE EXACT LOCATION INDICATED. (PLEASE CONTACT DISA BEFORE CONSTRUCTION AT 1-888-344-7233, ANVOR ALL LOCAL UTILITY COMPANIES).
 - APPROXIMATE SEWER LINE TAKEN FROM "SEWER PLAN", BY MALCOLM E. BERRETT, REVISED 12-24-81.
 - APPROXIMATE ELECTRIC LINES TAKEN FROM "PROPOSED CAMPSITE LAYOUT", BY MALCOLM W. BERRETT, REVISED 9-14-81.
 - APPROXIMATE WATER LINE TAKEN FROM "SOUTH SITES", BY BOARDMAN ASSOCIATES, DATE JUNE 1988.

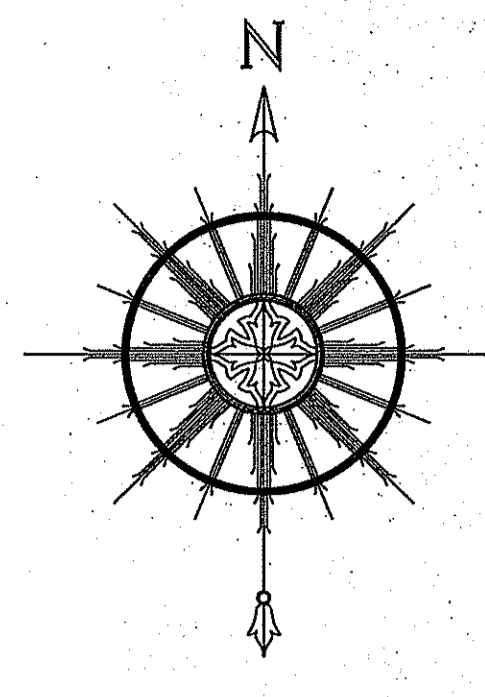
Note per DEM:
See Permit letter for Attached Stone Trench Detail.

Each proposed new camper site shall include a typical 2' wide by 10' long by 1' deep stone infiltration trench. Each such trench shall be located in the immediate proximity downslope of each proposed camper site.

GRAPHIC SCALE



- LEGEND:**
- APPROXIMATE PROPERTY LINE
 - - - ABUTTER PROPERTY LINE
 - W WETLAND BOUNDARY
 - W WETLAND FLAG
 - - - PERIMETER WETLAND EDGE
 - - - TOPOGRAPHIC CONTOUR
 - - - TREE LINE
 - - - APPROXIMATE UTILITY LINE
 - - - EXISTING CAMP SITE
 - W WATER LINE
 - S SEWER LINE
 - C CABLE LINE
 - E ELECTRICAL CONDUIT
 - W FUTURE CAMP SITE
 - W PROPOSED WATER LINE
 - S-1 PHASE I SEWER LINE
 - S-2 PHASE II SEWER LINE
 - S-3 PHASE III SEWER LINE
 - ⊙ PROPOSED SEWER MANHOLE
 - SM PROPOSED PRESSURIZED SEWER
 - C PROPOSED ELECTRICAL CONDUIT
 - - - PROPOSED TOPOGRAPHIC CONTOUR
 - D PROPOSED DRAIN LINE
 - ⊙ PROPOSED DRAIN OUTLET STRUCTURE
 - PROPOSED SURFACE FLOW
 - H.S. PROPOSED STRAW BALES AND SILT FENCE
 - S.F. PROPOSED SILT FENCE



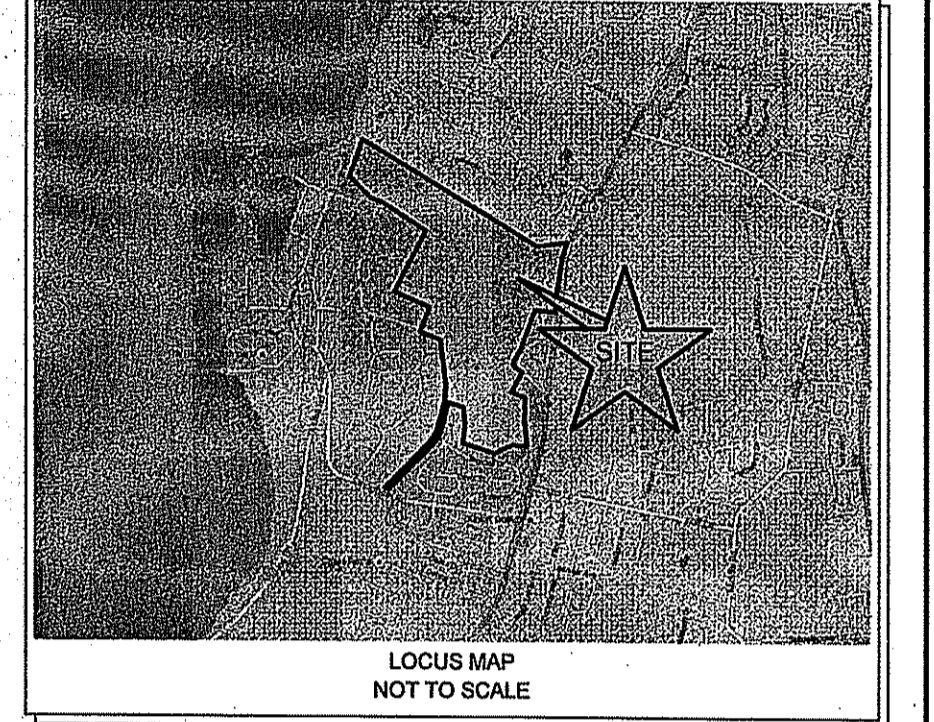
- NOTES:**
1. ORTHOPHOTOGRAPHY OBTAINED FROM RHODE ISLAND GEOGRAPHIC INFORMATION SYSTEM (RIGIS). PHOTOS TAKEN FROM APRIL 2011 RHODE ISLAND STATEWIDE HIGH RESOLUTION ORTHOPHOTOS PUBLISHED BY U.S. GEOLOGICAL SURVEY AND DATA SET PRODUCED BY RUGRO EARTHDATA, INC. THE PRODUCERS OF THIS DATASET, CONTRIBUTORS TO THIS DATASET, THE RIGIS STATE OF RHODE ISLAND, AND THE UNIVERSITY OF RHODE ISLAND DO NOT MAKE ANY WARRANTIES OF ANY KIND FOR THIS DATASET.
 2. PROPERTY LINES TAKEN FROM TOWN OF PORTSMOUTH, RHODE ISLAND ASSESSOR'S PLATS 37 AND 43.
 3. WETLAND BOUNDARY FLAGS WERE FIELD LOCATED BY NORTHEAST ENGINEERS AND CONSULTANTS, INC. IN AUGUST 2016.
 4. TOPOGRAPHIC CONTOURS OBTAINED FROM RIGIS DATA LAYER SPRING 2011 NORTHEAST LIDAR PROJECT 2-FOOT ELEVATION CONTOUR LINE, ORIGINATED BY UNIVERSITY OF RHODE ISLAND ENVIRONMENTAL DATA CENTER PHOTO SCIENCE, INC., PUBLISHED BY UNIVERSITY OF RHODE ISLAND ENVIRONMENTAL DATA CENTER, PUBLISHED DATE MARCH 30, 2013.
 5. ALL UNDERGROUND UTILITIES SHOWN ON THIS PLAN HAVE BEEN FIELD LOCATED BY NORTHEAST ENGINEERS AND CONSULTANTS, INC. IN AUGUST 2016 FROM GROUND PENETRATING RADAR-PAINT MARKS. THE SURVEYOR MAKES NO GUARANTEE THAT THE UNDERGROUND UTILITIES SHOWN COMPRISE ALL SUCH UTILITIES IN THE AREA, EITHER IN SERVICE OR ABANDONED. THE SURVEYOR DOES NOT WARRANT THAT THE UNDERGROUND UTILITIES SHOWN ARE IN THE EXACT LOCATION INDICATED. (PLEASE CONTACT DIGSAFE PRIOR TO CONSTRUCTION AT 1-888-344-7233, AND/OR ALL LOCAL UTILITY COMPANIES.)
 6. APPROXIMATE SEWER LINE TAKEN FROM "SEWER PLAN", BY MALCOLM E. BERRETT, REVISED 12-24-81.
 7. APPROXIMATE ELECTRIC LINES TAKEN FROM "PROPOSED CAMPSITE LAYOUT", BY MALCOLM W. BERRETT, REVISED 9-14-81.
 8. APPROXIMATE WATER LINE TAKEN FROM "SOUTH SITES", BY BOARDMAN ASSOCIATES, DATE JUNE 1988.

NORTHEAST ENGINEERS & CONSULTANTS, INC.



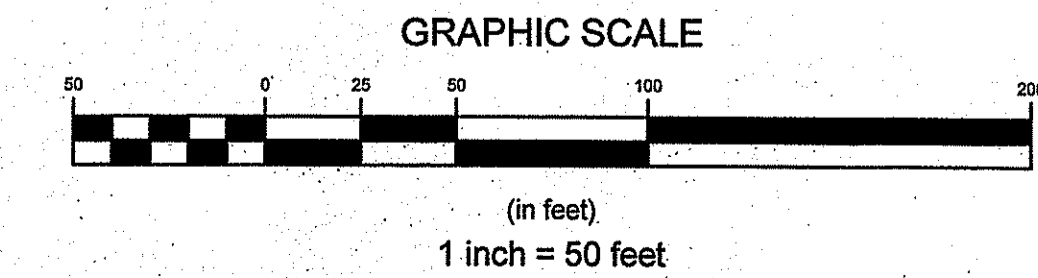
SITE/CIVIL
LAND PLANNING
WATERFRONT
SURVEYING
GEOTECHNICAL
ENVIRONMENTAL
TRANSPORTATION
STRUCTURAL

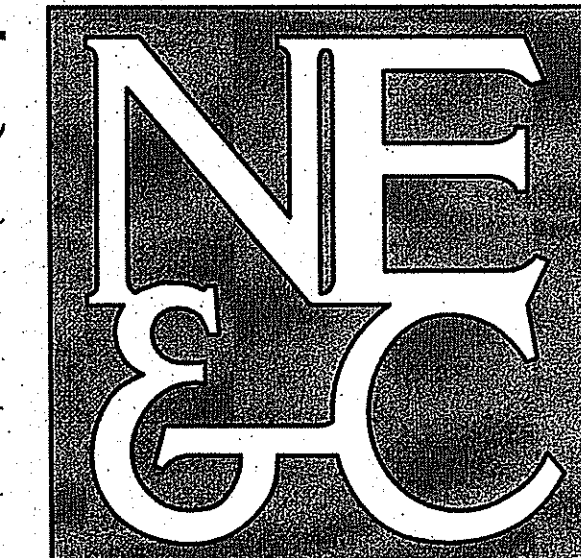
A KNOWLEDGE CORPORATION®
55 JOHN CLARKE ROAD MIDDLETOWN RHODE ISLAND 02842
PHONE (401) 849-0810 FAX (401) 846-4169
WWW.NORTHEASTENGINEERS.COM



DEPARTMENT OF ENVIRONMENTAL MANAGEMENT
OFFICE OF WATER RESOURCES
FRESHWATER WETLANDS PROGRAM
APPROVED WITH CONDITIONS
AS SPECIFIED IN THE LETTER OF APPROVAL
DATED MAR 17 2017 FILE # 16-0297
NO CHANGES ALLOWED WITHOUT PRIOR APPROVAL
APPROVED PLANS MUST BE AT CONSTRUCTION SITE
Signature: M. W. W...

1	RIDEM WETLANDS COMMENTS	16JAN17	
No.	Revision	Date	App.
Designed By: JJR	Drawn by: VAL	Checked by: GES	
Scale: 1"=50'	Date: 13OCT16		
Project Title: MELVILLE PONDS CAMPGROUND A.P. 43 & LOT 1A 181 BRADFORD AVENUE PORTSMOUTH, RHODE ISLAND 02871			
Client/Owner: JUSTIN MAY 41 SAWMILL ROAD PO BOX 425, HOPE VALLEY, RI 02832			
Issued for: PERMITTING			
Drawing Title: DRAINAGE AND EROSION CONTROL SHEET 1			
Drawing Number: C-5		Sheet 5 of 9	
Project Number: 15190.0		Survey Index:	
OWNERSHIP AND USE OF DOCUMENTS: DRAWINGS AND SPECIFICATIONS, AS INSTRUMENTS OF PROFESSIONAL SERVICE, ARE AND SHALL REMAIN THE PROPERTY OF THE ENGINEER. THESE DOCUMENTS ARE NOT TO BE USED, IN WHOLE OR PART, FOR ANY OTHER PROJECTS OR PURPOSES, OR BY ANY OTHER PARTIES, THAN THOSE PROPERLY AUTHORIZED BY CONTRACT, WITHOUT THE EXPRESS AUTHORIZATION OF THE ENGINEER.			

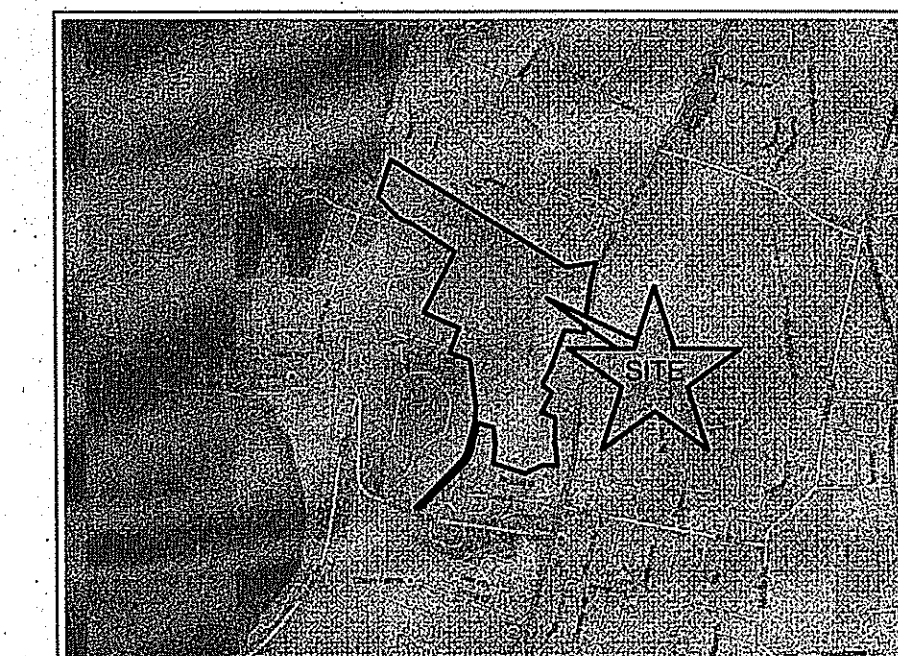




A KNOWLEDGE CORPORATION®

55 JOHN CLARKE ROAD MIDDLETOWN RHODE ISLAND 02842
PHONE (401) 849-0810 FAX (401) 846-4169
WWW.NORTHEASTENGINEERS.COM

SITE/CIVIL
LAND PLANNING
WATERFRONT
SURVEYING
GEOTECHNICAL
ENVIRONMENTAL
TRANSPORTATION
STRUCTURAL



LOCUS MAP
NOT TO SCALE

DEPARTMENT OF ENVIRONMENTAL MANAGEMENT
OFFICE OF WATER RESOURCES
FRESHWATER WETLANDS PROGRAM
APPROVED WITH CONDITIONS
AS SPECIFIED IN THE LETTER OF APPROVAL
DATED MAR 17 2017 FILE # 16-0297
NO CHANGES ALLOWED WITHOUT PRIOR APPROVAL
APPROVED PLANS MUST BE AT CONSTRUCTION SITE
Christina D. Wenzel

No.	Revision	Date	App.
1		16JAN17	

Designed by: JUR Drawn by: VAL Checked by: GES
Scale: 1"=50' Date: 13OCT16

Project Title:
MELVILLE PONDS CAMPGROUND
A.P. 43 & LOT 1A
181 BRADFORD AVENUE
PORTSMOUTH, RHODE ISLAND 02871

Client/Owner:
JUSTIN MAY
41 SAWMILL ROAD
PO BOX 425, HOPE VALLEY, RI 02832

Issued for:
PERMITTING

Drawing Title:
**DRAINAGE AND
EROSION CONTROL**
SHEET 2

Drawing Number: C-6	Sheet 6 of 9
Project Number: 15190.0	Survey Index:

OWNERSHIP AND USE OF DOCUMENTS: DRAWINGS AND SPECIFICATIONS, AS INSTRUMENTS OF PROFESSIONAL SERVICE, ARE AND SHALL REMAIN THE PROPERTY OF THE ENGINEER. THESE DOCUMENTS ARE NOT TO BE USED, IN WHOLE OR PART, FOR ANY OTHER PROJECTS OR PURPOSES, OR BY ANY OTHER PARTIES, THAN THOSE PROPERLY AUTHORIZED BY CONTRACT, WITHOUT THE EXPRESS AUTHORIZATION OF THE ENGINEER.

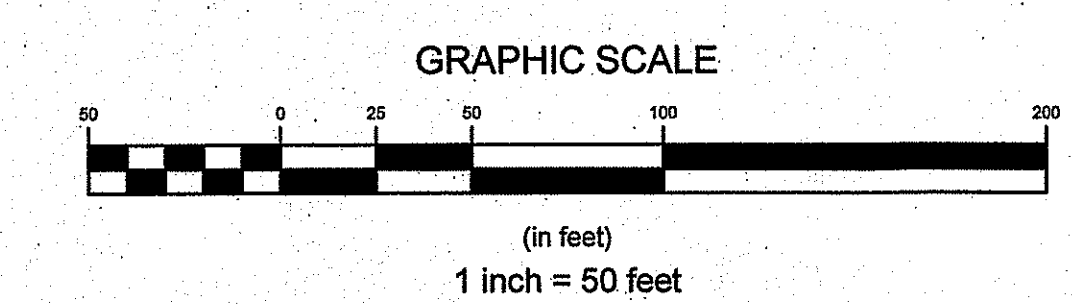


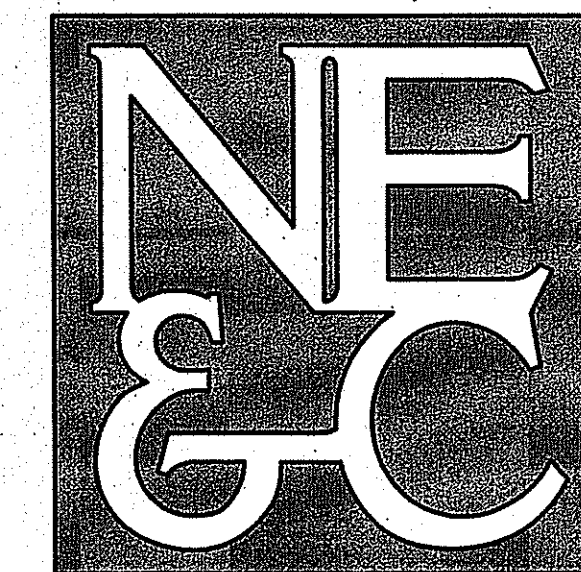
LEGEND:

- APPROXIMATE PROPERTY LINE
- - - ABUTTER PROPERTY LINE
- - - WETLAND BOUNDARY
- Ⓢ WETLAND FLAG
- PERIMETER WETLAND EDGE
- - - TOPOGRAPHIC CONTOUR
- - - TREE LINE
- - - APPROXIMATE UTILITY LINE
- EXISTING CAMP SITE
- W WATER LINE
- S SEWER LINE
- C CABLE LINE
- E ELECTRICAL CONDUIT
- FUTURE CAMP SITE
- W PROPOSED WATER LINE
- S-1 PHASE I SEWER LINE
- S-2 PHASE II SEWER LINE
- S-3 PHASE III SEWER LINE
- Ⓢ PROPOSED SEWER MANHOLE
- SPH PROPOSED PRESSURIZED SEWER
- - - PROPOSED ELECTRICAL CONDUIT
- - - PROPOSED TOPOGRAPHIC CONTOUR
- D PROPOSED DRAIN LINE
- Ⓢ PROPOSED DRAIN OUTLET STRUCTURE
- Ⓢ PROPOSED SURFACE FLOW
- H.S. PROPOSED STRAW BALES AND SILT FENCE
- S.F. PROPOSED SILT FENCE

Kindly be advised that this Permit is not equivalent to a verification of the type or extent of freshwater wetlands on site.

- NOTES:**
- ORTHOGRAPHY OBTAINED FROM RHODE ISLAND GEOGRAPHIC INFORMATION SYSTEM (RIGIS), PHOTOS TAKEN FROM APRIL 2014 RHODE ISLAND STATEWIDE HIGH RESOLUTION ORTHOIMAGES PUBLISHED BY U.S. GEOLOGICAL SURVEY AND DATA SET PRODUCED BY FUGRO EARTHDATA, INC. THE PRODUCERS OF THIS DATASET, CONTRIBUTORS TO THIS DATASET, THE RIGIS THE STATE OF RHODE ISLAND, AND THE UNIVERSITY OF RHODE ISLAND DO NOT MAKE ANY WARRANTIES OF ANY KIND FOR THIS DATASET.
 - PROPERTY LINES TAKEN FROM TOWN OF PORTSMOUTH, RHODE ISLAND ASSESSOR'S PLATS 37 AND 43.
 - WETLAND BOUNDARY FLAGS WERE FIELD LOCATED BY NORTHEAST ENGINEERS AND CONSULTANTS, INC. IN AUGUST 2016.
 - TOPOGRAPHIC CONTOURS OBTAINED FROM RIGIS DATALAYER SPRING 2011 NORTHEAST LIDAR PROJECT 2-FOOT ELEVATION CONTOUR LINE, ORIGINATED BY UNIVERSITY OF RHODE ISLAND ENVIRONMENTAL DATA CENTER PHOTO SCIENCE, INC., PUBLISHED BY UNIVERSITY OF RHODE ISLAND ENVIRONMENTAL DATA CENTER, PUBLISHED DATE MARCH 30, 2013.
 - ALL UNDERGROUND UTILITIES SHOWN ON THIS PLAN HAVE BEEN FIELD LOCATED BY NORTHEAST ENGINEERS AND CONSULTANTS, INC. IN AUGUST 2016 FROM GROUND PENETRATING RADAR PAINT MARKS. THE SURVEYOR MAKES NO GUARANTEE THAT THE UNDERGROUND UTILITIES SHOWN COMPRISE ALL SUCH UTILITIES IN THE AREA, EITHER IN SERVICE OR ABANDONED. THE SURVEYOR DOES NOT WARRANT THAT THE UNDERGROUND UTILITIES SHOWN ARE IN THE EXACT LOCATION INDICATED. (PLEASE CONTACT DIGSAFE PRIOR TO CONSTRUCTION AT 1-888-344-7233, ANIOR ALL LOCAL UTILITY COMPANIES.)
 - APPROXIMATE SEWER LINE TAKEN FROM "SEWER PLAN", BY MALCOLM E. BERRETT, REVISED 12-24-81.
 - APPROXIMATE ELECTRIC LINES TAKEN FROM "PROPOSED CAMPSITE LAYOUT", BY MALCOLM W. BERRETT, REVISED 9-14-81.
 - APPROXIMATE WATER LINE TAKEN FROM "SOUTH SITES", BY BOARDMAN ASSOCIATES, DATE JUNE 1986.



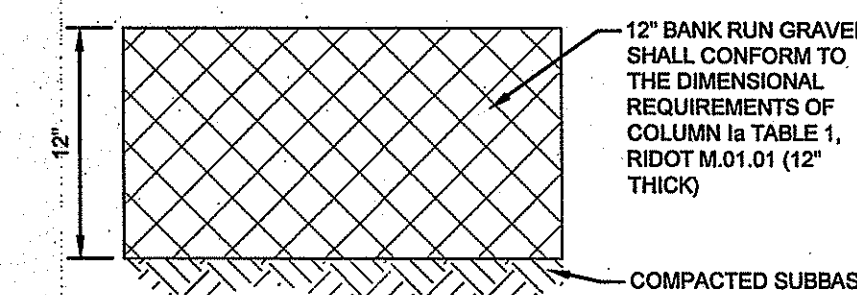


A KNOWLEDGE CORPORATION®

55 JOHN CLARKE ROAD MIDDLETOWN RHODE ISLAND 02842
 PHONE (401) 849-0810 FAX (401) 846-4169
 WWW.NORTHEASTENGINEERS.COM

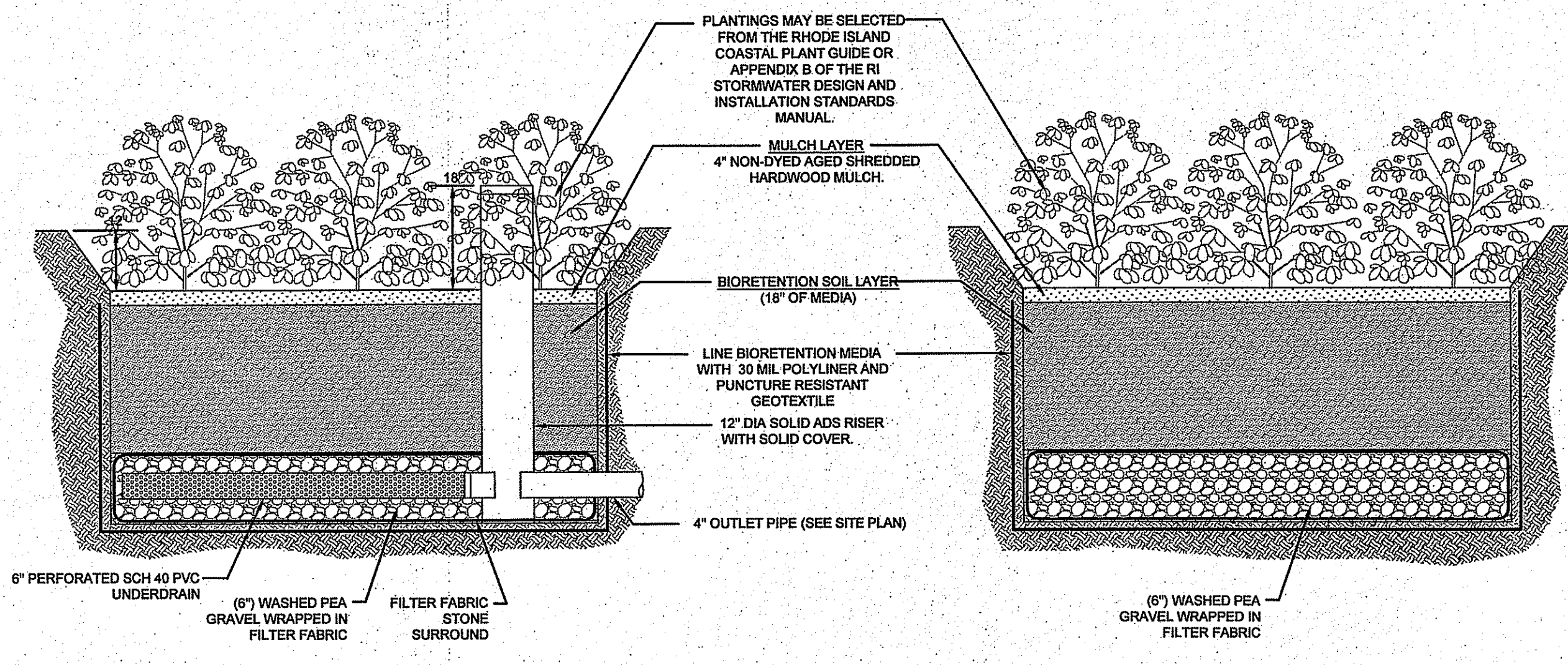
SITE/CIVIL
 LAND PLANNING
 WATERFRONT
 SURVEYING
 GEOTECHNICAL
 ENVIRONMENTAL
 TRANSPORTATION
 STRUCTURAL

DEPARTMENT OF ENVIRONMENTAL MANAGEMENT
 OFFICE OF WATER RESOURCES
 FRESHWATER WETLANDS PROGRAM
 APPROVED WITH CONDITIONS
 AS SPECIFIED IN THE LETTER OF APPROVAL
 DATE: MAR 17 2017 FILE # 16-0297
 NO CHANGES ALLOWED WITHOUT PRIOR APPROVAL
 APPROVED BY: [Signature]



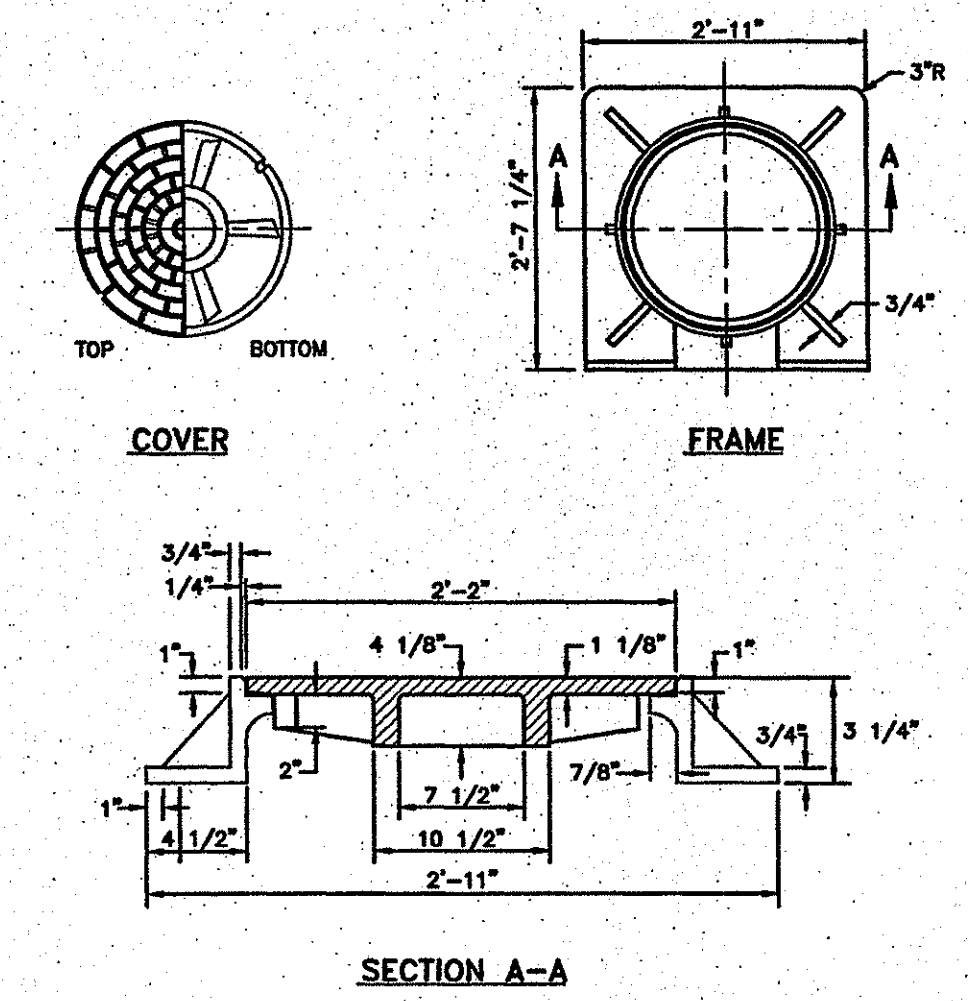
NOTE: GRAVEL DRIVEWAYS SHALL BE CROWNED AT A 2% SLOPE FROM THE CENTERLINE.

GRAVEL DRIVEWAY SECTION
 SCALE: NOT TO SCALE



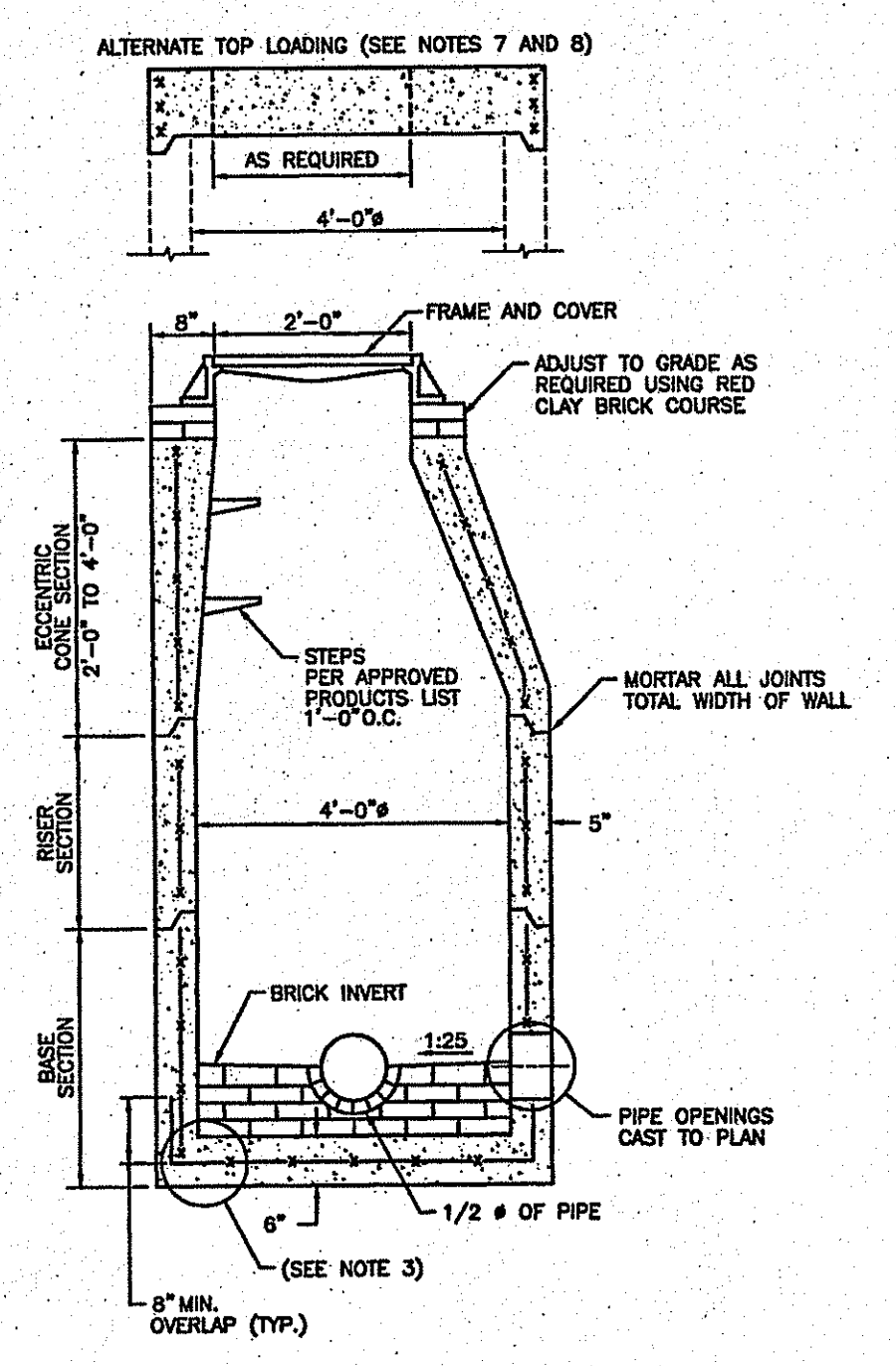
- NOTES:
- BIORETENTION FILTER PLANTINGS MAY BE SELECTED FROM THE RHODE ISLAND COASTAL PLANT GUIDE OR APPENDIX B OF THE RI STORMWATER DESIGN AND INSTALLATION STANDARDS MANUAL AND SHOULD BE SELECTED BY A REGISTERED RI LANDSCAPE ARCHITECT.
 - PLANTINGS MUST BE DENSE AND COVER THE ENTIRETY OF THE FILTER SURFACE.
 - BIORETENTION SOIL SHALL CONSIST OF USDA LOAMY SAND AND MEET THE FOLLOWING GRADATIONS: SAND 85-88% SILT 8-12%, CLAY 0-2%, AND ORGANIC MATTER (LEAF COMPOST) 3-5%.
 - UNDERDRAIN STONE SHALL CONFORM TO AASHTO M-43, 0.25" TO 0.75". MATERIAL MUST BE WASHED CLEAN PEA GRAVEL. STONE PIPE TO BE WRAPPED IN GEOTEXTILE FABRIC CONFORMING TO FLOWRATE IN NOTE 5. PEA GRAVEL LAYER TO EXTEND UNDER ENTIRETY OF BIORETENTION MEDIA TO FORM A COMPLETE UNDERLAY.
 - POLYLINER SHALL BE 30 MIL IN THICKNESS (ASTM D 751), SHALL HAVE A TENSILE STRENGTH OF 1,100 LBS AND AN ELONGATION OF 200% (ASTM D 412) A TEAR RESISTANCE OF 150 LBS/IN (ASTM D 624) AND WATER ADSORPTION OF +8 TO -2% MASS (ASTM D 471). LINER SHALL BE ULTRAVIOLET RESISTANT. GEOTEXTILE FABRIC SHALL HAVE A PUNCTURE STRENGTH OF 125 LBS, A BURST STRENGTH OF 400 PSI (ASTM D 1117) AND A TENSILE STRENGTH OF 300 LBS (ASTM D 1882). FABRIC SHALL BE MIN 0.08" THICK WITH AN EQUIVALENT OPENING SIZE OF #80 SIEVE AND A MINIMUM FLOW RATE OF 125 GPM PER SQUARE FOOT.
 - UNDERDRAIN SHALL BE SCHEDULE 40 PVC PIPE CONFORMING TO ASTM D-1785 OR AASHTO M-278. PERFORATIONS SHALL BE 3/8" @ 6" ON CENTER. PIPE SHALL HAVE 3" OF STONE COVER.

TYPICAL LINED BIORETENTION FILTER CROSS SECTIONS
 SCALE: NOT TO SCALE



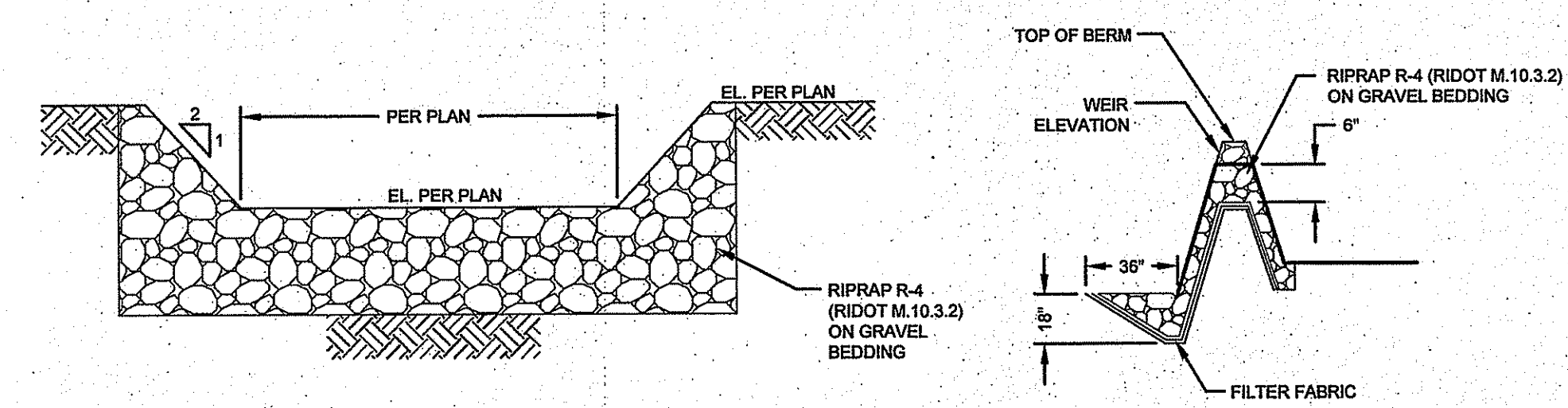
- NOTES:
- FRAME AND COVER SHALL CONFORM TO SECTION M.04 OF THE RI STANDARD SPECIFICATIONS.
 - FRAME AND COVER SEATS TO BE MACHINE FINISH.

HEAVY DUTY SQUARE FRAME AND ROUND COVER
 (RIDOT 6.1.1)
 SCALE: NOT TO SCALE

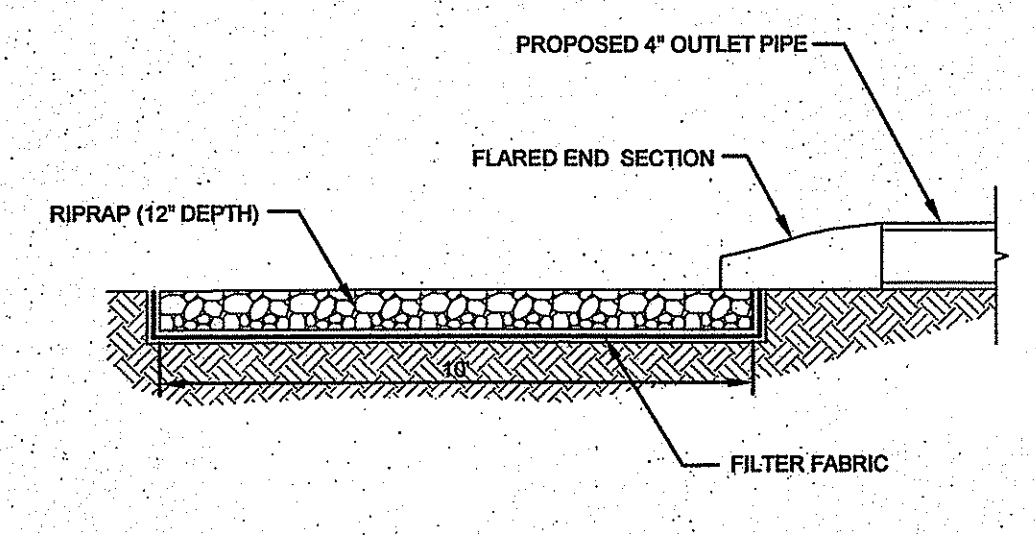


- NOTES:
- SHALL BE IN ACCORDANCE WITH SECTION 702 OF THE RI STANDARD SPECIFICATIONS.
 - CIRCUMFERENTIAL STEEL REINFORCEMENT REQUIRED = 0.12 SQ. IN. / LIN. FT. MINIMUM.
 - STEEL REINFORCEMENT FOR BASE SECTION BOTTOM SHALL BE A MINIMUM OF 0.12 SQ. IN./LIN. FT. (BOTH WAYS).
 - ONE FOUR INCH THICK BASE SECTION.
 - ANY NECESSARY ADJUSTMENTS DURING CONSTRUCTION WILL BE DONE BY SAW-CUTTING AND/OR CORING ONLY. NO JACKHAMMERS, HAMMERS AND CHISELS OR PNEUMATIC TOOLS WILL BE ALLOWED.
 - STEPS SHALL CONFORM TO STD. 5.3.0 AND SHALL BE INSTALLED AT THE CASTING PLANT.
 - ALTERNATE TOP SLAB IS STEEL REINFORCED TO MEET OR EXCEED H-25 LOADING (SEE STD. 4.7.2).
 - ALTERNATE TOP SLAB IS ONLY FOR USE WHEN REDUCING SECTION DOES NOT FIT BECAUSE OF STRUCTURE DEPTH.
 - REFER TO STD. 5.2.0 FOR MAXIMUM PIPE SIZES.

48" PRECAST CONCRETE SEWER MANHOLE (RIDOT 4.2.0)
 SCALE: NOT TO SCALE



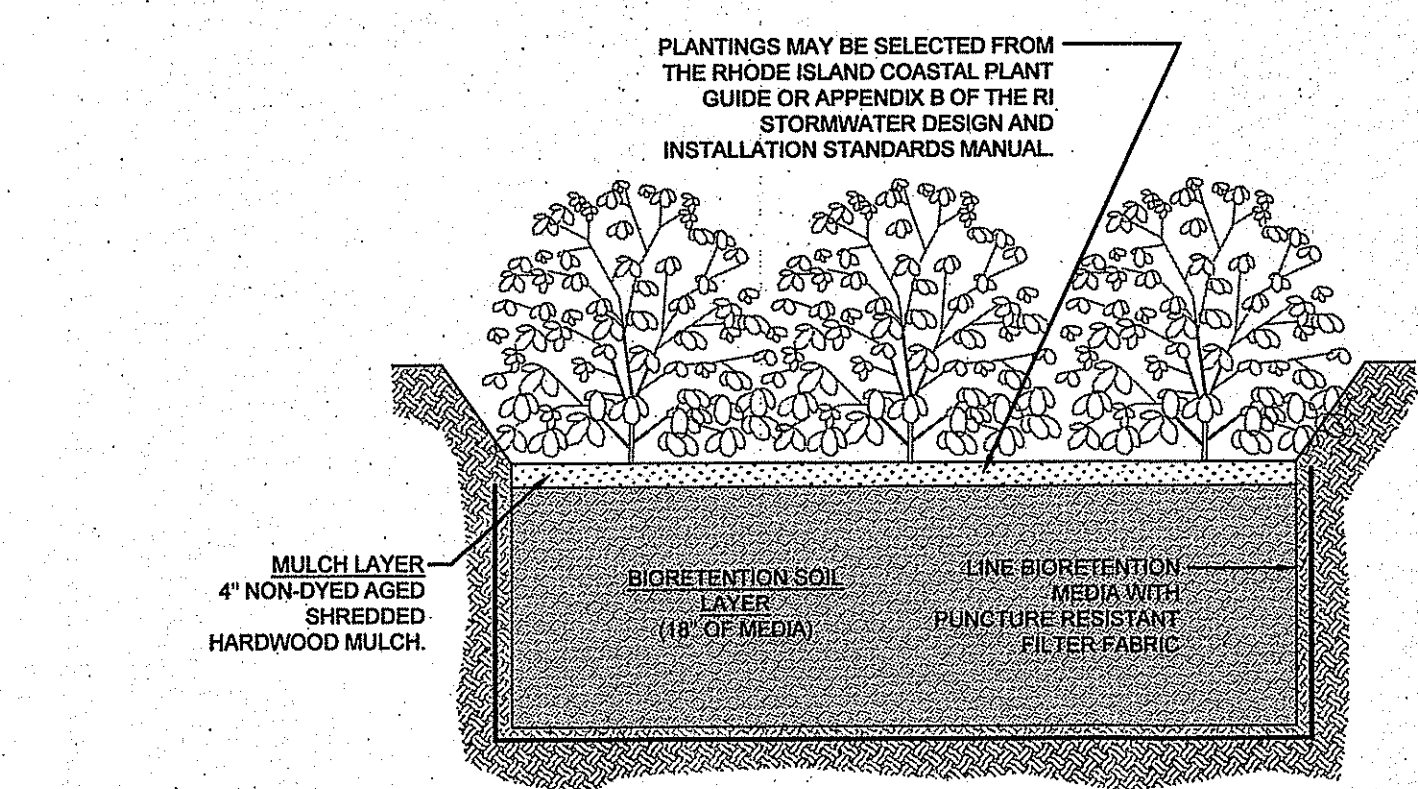
STONE WEIR DETAIL
 SCALE: NOT TO SCALE



Basin Outlet Flared End Section
 SCALE: NOT TO SCALE

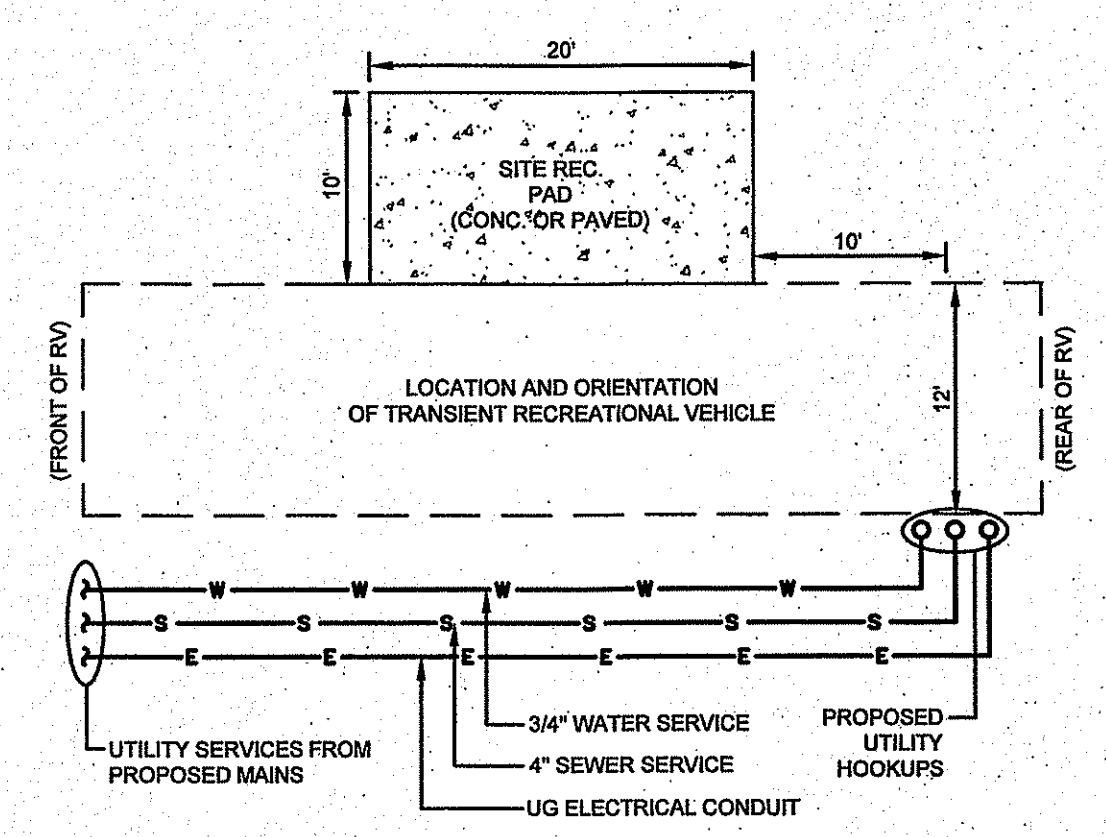
Kindly be advised that this Permit is not equivalent to a verification of the type or extent of freshwater wetlands on site.

- NOTES:
- UNSUITABLE MATERIAL SHALL BE EXCAVATED TO A MINIMUM DEPTH OF 12-INCHES BELOW THE DESIGN INVERT ELEVATION.
 - TRENCH PROTECTION SHALL BE REQUIRED IN ACCORDANCE WITH OSHA REGULATIONS, AND AS OTHERWISE REQUIRED TO PROTECT UTILITIES, ROADWAYS, AND ADJACENT STRUCTURES.
 - SEWER AND DRAIN PIPES SHALL BE LAID BEGINNING AT THE DOWNSTREAM END OF THE PIPE LINE.
 - ALL PVC SEWER PIPES SHALL BE IPEX RING-TITE SDR 35, OR SIMILAR APPROVED.
 - ALL DRAIN PIPES SHALL BE SCH 40 PVC UNLESS OTHERWISE INDICATED.
 - ALL SEWER PIPE AND GASKETS SHALL CONFORM TO ASTM 3034 AND ASTM F679.
 - ALL NEW SEWER MANHOLES SHALL HAVE KOR-N-SEAL CONNECTIONS, TYPICAL OR EQUAL.
 - BACKFILL MATERIAL SHALL BE PLACED IN LAYERS NOT TO EXCEED 12" IN HEIGHT WHEN INSTALLED UNDER LANDSCAPED AREAS ONLY. INSTALLATIONS UNDER PAVEMENT REQUIRE BACKFILL MATERIAL TO BE PLACED IN LAYERS NOT TO EXCEED 6" IN HEIGHT. THESE LAYERS SHALL BE COMPACTED TO 95% MAXIMUM DENSITY (AASHTO T199). SUITABLE BACKFILL SHALL BE FREE OF LOAM, CLAY, ORGANIC MATTER AND PARTICLES LARGER THAN 2 INCHES IN DIAMETER.
 - SEWER AND DRAINAGE PIPE TRENCHES SHALL BE BEDDED WITH CRUSHED STONE OR SCREENED GRAVEL. THESE MATERIALS MUST CONFORM TO RIDOT STANDARD M.01.09 TYPE II MATERIAL.
 - WATER PIPE TRENCHES MUST BE BEDDED WITH SAND CONTAINING NO PARTICLES LARGER THAN 3/8". THIS MATERIAL MUST CONFORM TO AASHTO M6 REQUIREMENTS.
 - UTILITY INSTALLATIONS SHALL CONFORM TO ALL REQUIREMENTS OF THE TOWN OF PORTSMOUTH PUBLIC WORKS DEPARTMENT AND PORTSMOUTH WATER AND FIRE DISTRICT REGULATIONS.
 - WHEN TRENCH EXCAVATION IS ADJACENT TO OR UNDER EXISTING STRUCTURES OR FACILITIES, THE CONTRACTOR SHALL BE RESPONSIBLE FOR PROPERLY SHEETING AND BRACING THE EXCAVATION AND STABILIZING THE EXISTING GROUND TO RENDER IT SAFE AND SECURE FROM POSSIBLE SLIDES, CAVE-INS AND SETTLEMENT AND FOR PROPERLY SUPPORTING EXISTING STRUCTURES AND FACILITIES WITH BEAMS, STRUTS OR UNDERPINNING TO FULLY PROTECT THEM FROM DAMAGE.

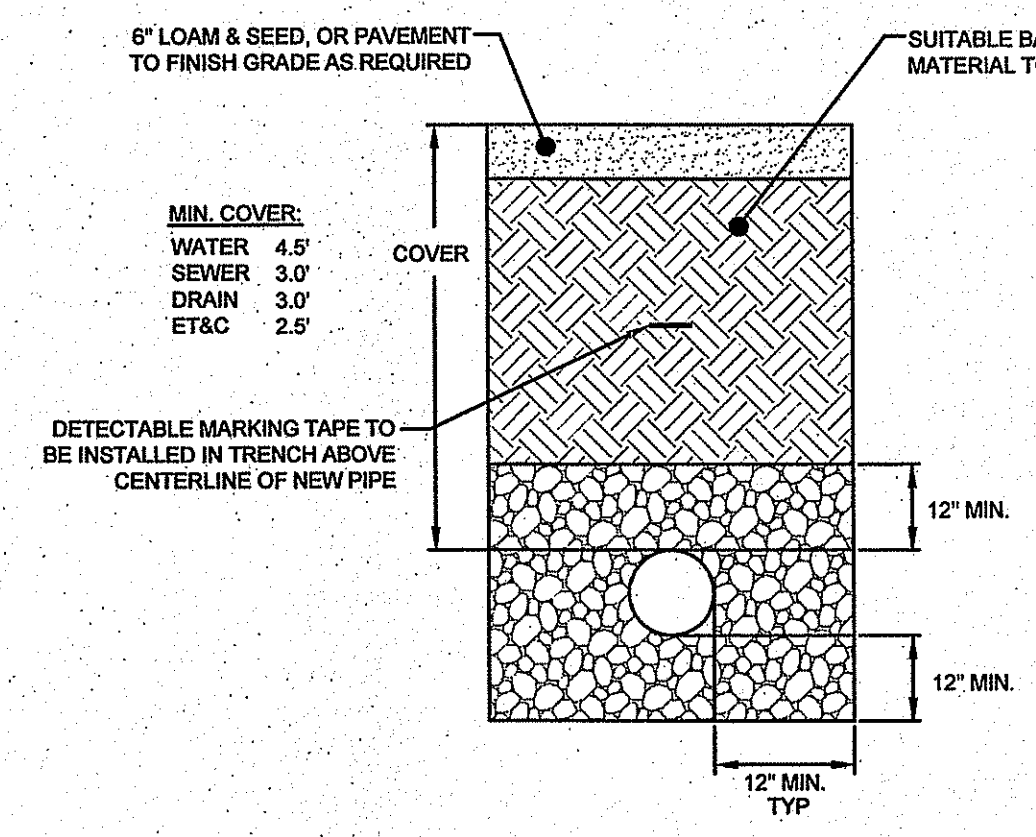


- NOTES:
- BIORETENTION FILTER PLANTINGS MAY BE SELECTED FROM THE RHODE ISLAND COASTAL PLANT GUIDE OR APPENDIX B OF THE RI STORMWATER DESIGN AND INSTALLATION STANDARDS MANUAL AND SHOULD BE SELECTED BY A REGISTERED RI LANDSCAPE ARCHITECT.
 - PLANTINGS MUST BE DENSE AND COVER THE ENTIRETY OF THE FILTER SURFACE.
 - BIORETENTION SOIL SHALL CONSIST OF USDA LOAMY SAND AND MEET THE FOLLOWING GRADATIONS: SAND 85-88% SILT 8-12%, CLAY 0-2%, AND ORGANIC MATTER (LEAF COMPOST) 3-5%.

TYPICAL UNLINED BIORETENTION FILTER CROSS SECTION
 SCALE: NOT TO SCALE

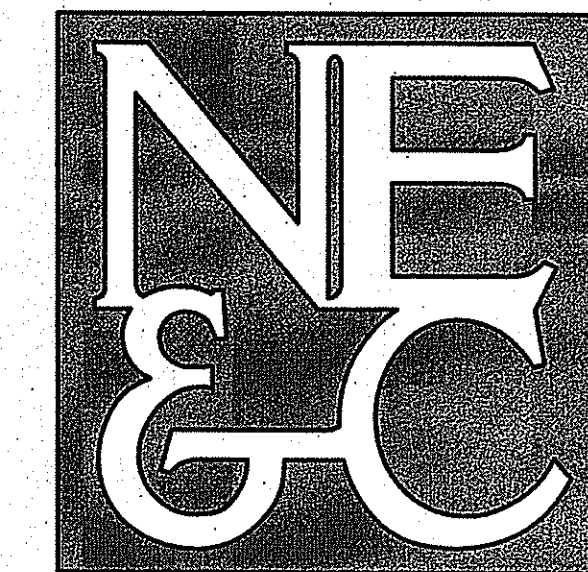


TYPICAL CAMPSITE LAYOUT
 SCALE: NOT TO SCALE



UTILITY TRENCH DETAIL
 SCALE: NOT TO SCALE

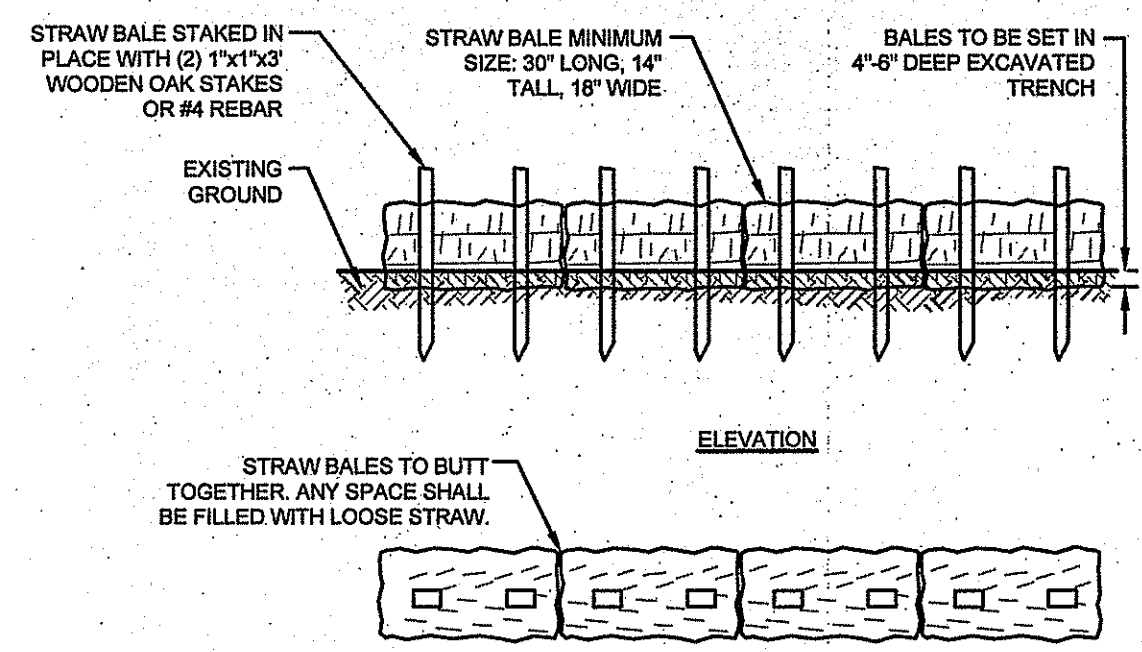
RIDEM WETLANDS COMMENTS		16JAN17	
No.	Revision	Date	App.
Designed By:	JJR	Drawn by:	VAL
Checked by:	GES	Date:	13OCT16
Project Title:			
MELVILLE PONDS CAMPGROUND A.P. 43 & LOT 1A 181 BRADFORD AVENUE PORTSMOUTH, RHODE ISLAND 02871			
Client/Owner:			
JUSTIN MAY 41 SAWMILL ROAD PO BOX 425, HOPE VALLEY, RI 02832			
Issued for:			
PERMITTING			
Drawing Title:			
DETAIL SHEET 1			
Drawing Number:		C-7	
Sheet 7 of 9		Project Number:	
15190.0		Survey Index:	
OWNERSHIP AND USE OF DOCUMENTS: DRAWINGS AND SPECIFICATIONS, AS INSTRUMENTS OF PROFESSIONAL SERVICE, ARE AND SHALL REMAIN THE PROPERTY OF THE ENGINEER. THESE DOCUMENTS ARE NOT TO BE USED, IN WHOLE OR PART, FOR ANY OTHER PROJECTS OR PURPOSES, OR BY ANY OTHER PARTIES, THAN THOSE PROPERLY AUTHORIZED BY CONTRACT, WITHOUT THE EXPRESS AUTHORIZATION OF THE ENGINEER.			



A KNOWLEDGE CORPORATION®

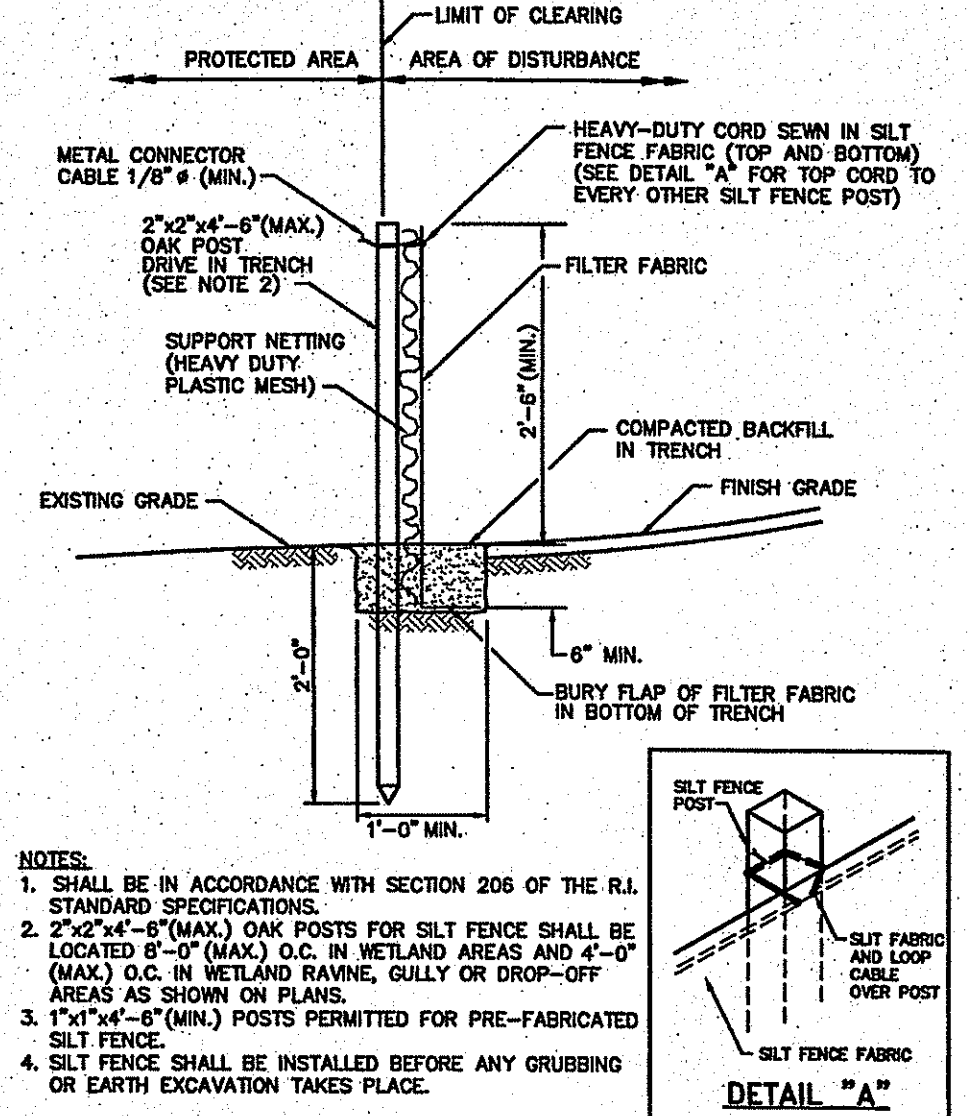
55 JOHN CLARKE ROAD MIDDLETOWN, RHODE ISLAND 02842
PHONE (401) 849-0810 FAX (401) 846-4169
WWW.NORTHEASTENGINEERS.COM

SITE/CIVIL
LAND PLANNING
WATERFRONT SURVEYING
GEOTECHNICAL
ENVIRONMENTAL
TRANSPORTATION
STRUCTURAL



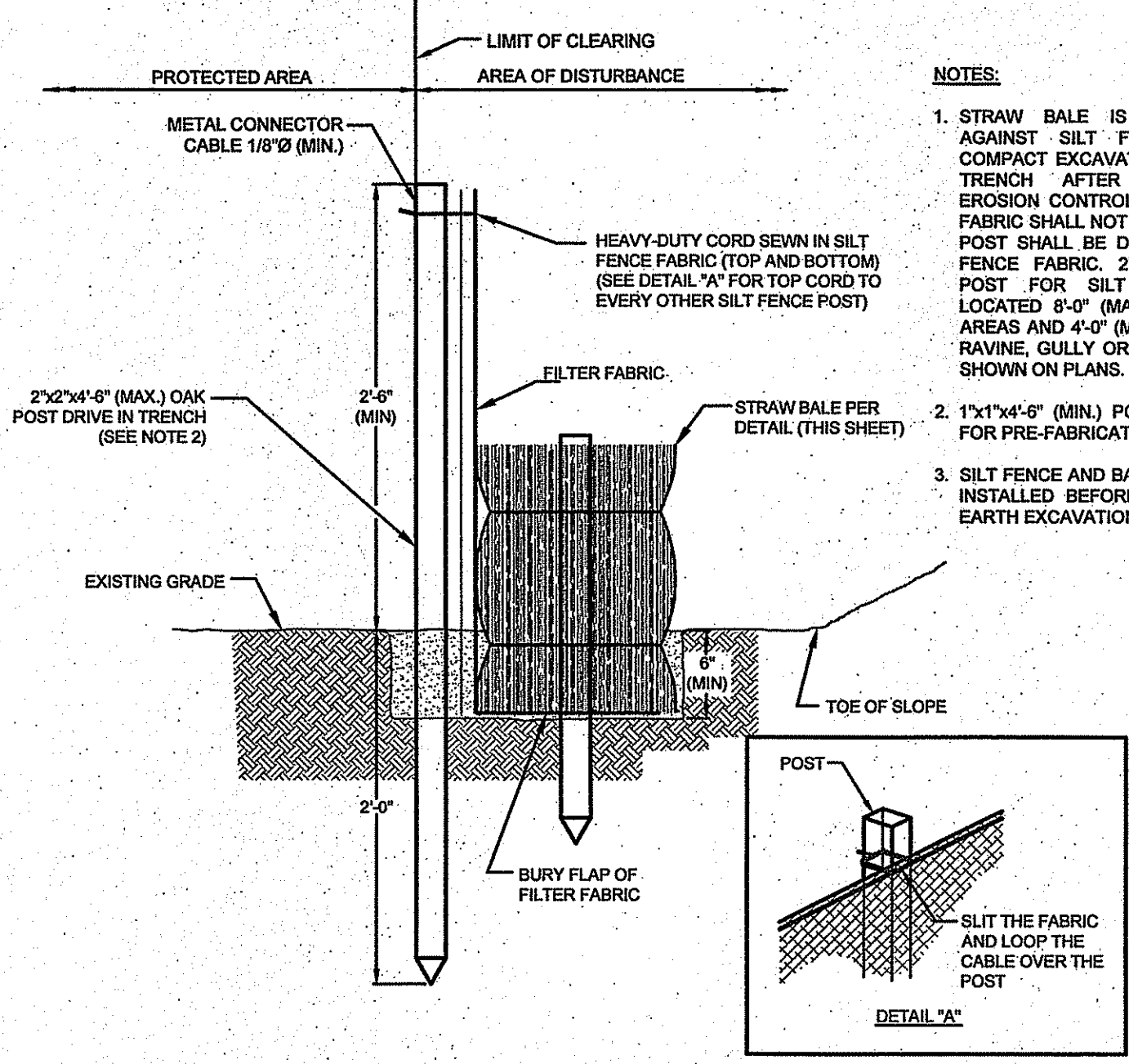
- NOTES:**
1. BALE WEIGHT SHALL NOT BE LESS THAN 50 LBS AND SHALL BE BOUND WITH NO LESS THAN TWO STRINGS OR WIRES CONTAINING A MINIMUM OF FIVE (5) CUBIC FEET OF MATERIAL. MINIMUM DIMENSIONS SHOWN IN DETAIL.
 2. STRAW BALES SHALL BE CERTIFIED AS BEING NOXIOUS WEEED-FREE BALES. TO BE "CERTIFIED" MEANS THAT THE PRODUCT IS FREE OF ANY NOXIOUS WEEDS.
 3. STRAW BALES SHALL BE DRIVEN THROUGH STAKES AT A SLIGHT UPSTREAM ANGLE TO PREVENT BALE FROM OVERTURNING.
 4. LOOSE STRAW SHALL BE WEDGED BETWEEN BALES AFTER INSTALLATION.
 5. MATERIAL EXCAVATED FROM TRENCH SHALL BE BACKFILLED, COMPACTED, AND STABILIZED.

BALED STRAW EROSION CONTROL BARRIER
SCALE: NOT TO SCALE



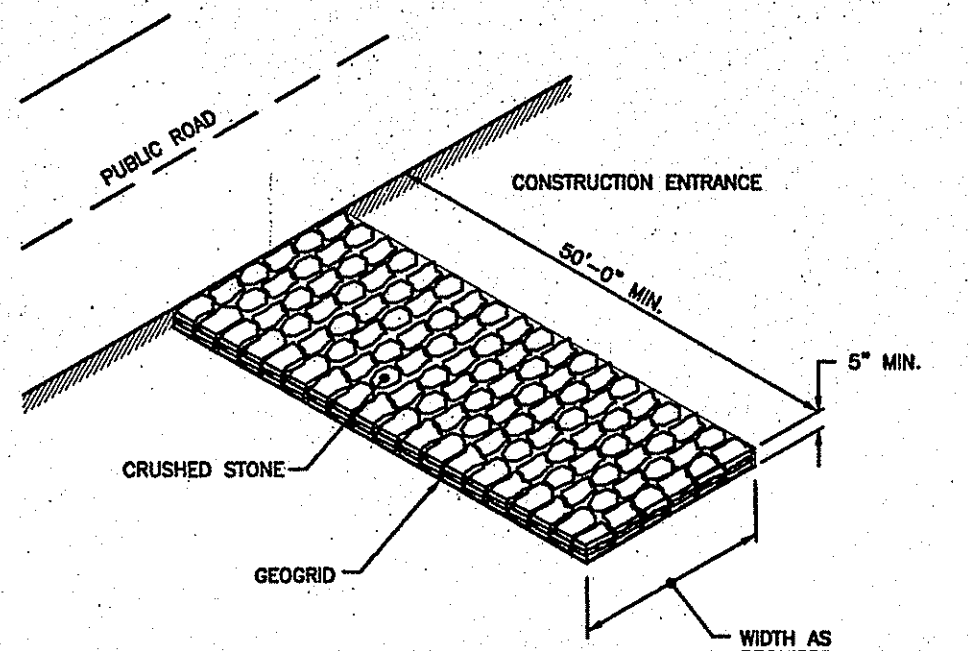
- NOTES:**
1. SHALL BE IN ACCORDANCE WITH SECTION 205 OF THE R.I. STANDARD SPECIFICATIONS.
 2. 2"x4"-6" (MAX.) OAK POSTS FOR SILT FENCE SHALL BE LOCATED 6'-0" (MAX.) O.C. IN WETLAND AREAS AND 4'-0" (MAX.) O.C. IN WETLAND RAVIDE, GULLY OR DROP-OFF AREAS AS SHOWN ON PLANS.
 3. 1"x4"-6" (MIN.) POSTS PERMITTED FOR PRE-FABRICATED SILT FENCE.
 4. SILT FENCE SHALL BE INSTALLED BEFORE ANY GRUBBING OR EARTH EXCAVATION TAKES PLACE.

SILT FENCE EROSION CHECK (RIDOT 9.2.0)
SCALE: NOT TO SCALE



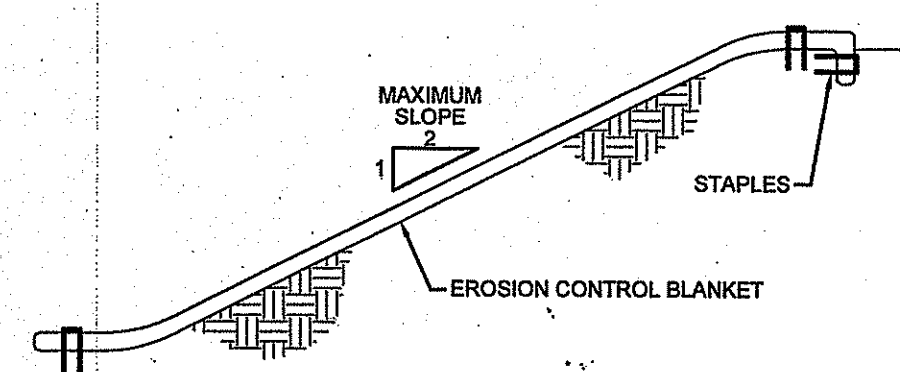
- NOTES:**
1. STRAW BALE IS INSTALLED "TIGHT" AGAINST SILT FENCE. THOROUGHLY COMPACT EXCAVATED SOILS BACK INTO TRENCH AFTER INSTALLATION OF EROSION CONTROL DEVICE SILT FENCE FABRIC SHALL NOT BE SLIT. STRAW BALE POST SHALL BE DRIVEN THROUGH SILT FENCE FABRIC. 2"x4"-6" (MAX.) OAK POST FOR SILT FENCE SHALL BE LOCATED 6'-0" (MAX.) O.C. IN WETLAND AREAS AND 4'-0" (MAX.) O.C. IN WETLAND RAVIDE, GULLY OR DROP OFF AREAS AS SHOWN ON PLANS.
 2. 1"x4"-6" (MIN.) POSTS ARE PERMITTED FOR PRE-FABRICATED SILT FENCE.
 3. SILT FENCE AND BALED STRAW SHALL BE INSTALLED BEFORE ANY GRUBBING OR EARTH EXCAVATION TAKES PLACE.

BALED STRAW EROSION CHECK AND SILT FENCE COMBINED
SCALE: NOT TO SCALE



NOTE: SHALL BE IN ACCORDANCE WITH SECTION 211 OF THE R.I. STANDARD SPECIFICATIONS.

STONE CONSTRUCTION ACCESS (RIDOT 9.9.0)
SCALE: NOT TO SCALE



- NOTES:**
1. PREPARE SOIL BEFORE INSTALLING BLANKETS, INCLUDING APPLICATION OF LIME, FERTILIZER, AND SEED.
 2. ANCHORING THE BLANKET IN A 6" DEEP X 6" WIDE TRENCH. BACKFILL AND COMPACT THE TRENCH AFTER STAPLING.
 3. ROLL THE BLANKETS DOWN THE SLOPE IN THE DIRECTION OF THE WATER FLOW.
 4. THE EDGES OF PARALLEL BLANKETS MUST BE STAPLED WITH APPROXIMATELY 2" OVERLAP.
 5. WHEN BLANKETS MUST BE SPLICED DOWN THE SLOPE, PLACE BLANKETS END OVER END (SHINGLE STYLE) WITH APPROXIMATELY 6" OVERLAP. STAPLE THROUGH OVERLAPPED AREA, APPROXIMATELY 12" APART.

EROSION CONTROL BLANKET
SCALE: NOT TO SCALE

- GRADING NOTES**
1. ADEQUATE PROVISIONS SHALL BE MADE TO PREVENT SURFACE WATERS FROM DAMAGING THE CUT FACE OF AN EXCAVATION OR THE SLOPED SURFACES OF A FILL. FURTHERMORE, ADEQUATE PROVISIONS SHALL BE MADE TO PREVENT SEDIMENT RUNOFF FROM LEAVING THE SITE.
 2. ALL GRADED AREAS SHALL BE SODDED OR PLANTED IMMEDIATELY AFTER THE GRUBBING WORK HAS BEEN COMPLETED.
 3. THE TOWN SHALL BE INFORMED OF THE LOCATION OF THE DISPOSAL SITE, IF ANY, FOR THE PROJECT.
 4. NO GRADING WORK SHALL BE DONE ON SATURDAYS, SUNDAYS AND HOLIDAYS AT ANY TIME WITHOUT PRIOR NOTICE TO THE TOWN. PROVIDED SUCH GRADING WORK IS ALSO IN CONFORMANCE WITH THE COMMUNITY NOISE CONTROL STANDARDS.
 5. THE LIMITS OF THE AREA TO BE GRADED SHALL BE FLAGGED BEFORE THE COMMENCEMENT OF THE GRADING WORK.
 6. ALL GRADING OPERATIONS SHALL BE PERFORMED IN CONFORMANCE WITH THE APPLICABLE PROVISIONS OF THE DEPARTMENT OF ENVIRONMENTAL MANAGEMENT AND THE TOWN.
 7. WHERE APPLICABLE AND FEASIBLE THE MEASURES TO CONTROL EROSION AND OTHER POLLUTANTS SHALL BE IN PLACE BEFORE GRADING WORK IS INITIATED.
 8. TEMPORARY EROSION CONTROLS SHALL NOT BE REMOVED BEFORE PERMANENT EROSION CONTROLS ARE IN PLACE AND ESTABLISHED.
 9. IF THE GRADING WORK INVOLVES CONTAMINATED SOIL, THEN ALL GRADING WORK SHALL BE DONE IN CONFORMANCE WITH APPLICABLE STATE AND FEDERAL REQUIREMENTS.
 10. NONCOMPLIANCE TO ANY OF THE ABOVE REQUIREMENTS SHALL MEAN IMMEDIATE SUSPENSION OF ALL WORK, AND REMEDIAL WORK SHALL COMMENCE IMMEDIATELY. ALL COSTS INCURRED SHALL BE BILLED TO THE VIOLATOR. FURTHERMORE, VIOLATORS SHALL BE SUBJECT TO ADMINISTRATIVE, CIVIL AND/OR CRIMINAL PENALTIES.

- UTILITY NOTES**
1. THE LOCATIONS OF PROPOSED ELECTRICAL CONDUIT AND CONNECTION TO THE EXISTING OVERHEAD SERVICES ARE PRELIMINARY. FINAL DESIGN OF THE ELECTRICAL SERVICES ARE SUBJECT TO DESIGN REVIEW AND APPROVAL OF NATIONAL GRID.
 2. THE LOCATIONS OF WATER LINES AND SERVICES ARE PRELIMINARY AND SUBJECT TO REVIEW AND APPROVAL BY PORTSMOUTH FIRE AND WATER DISTRICT.
 3. ELECTRIC SERVICES SHALL BE INSTALLED UNDERGROUND.
 4. THE CONTRACTOR SHALL BE SOLELY RESPONSIBLE FOR ALL ASSUMPTIONS, DEDUCTIONS, OR CONCLUSIONS HE/SHE MAY MAKE OR DERIVE FROM THE SUBSURFACE INFORMATION OR DATA FURNISHED ON THE PLANS. THE CONTRACTOR MUST SATISFY HIMSELF THROUGH HIS/HER OWN INVESTIGATIONS AS TO WHAT SUBSURFACE CONDITIONS ARE TO BE ENCOUNTERED.
 5. IF THE CONTRACTOR ELECTS NOT TO EXPOSE AND VERIFY ALL EXISTING UNDERGROUND UTILITIES AND STRUCTURES AT CROSSINGS PRIOR TO PIPELINE EXCAVATION, HE/SHE FORFEITS HIS/HER RIGHTS FOR ANY CLAIMS FOR COMPENSATION CAUSED BY ANY CONFLICTS WITH EXISTING UTILITIES AND STRUCTURES.
 6. THE CONTRACTOR SHALL BE RESPONSIBLE FOR THE PROPER DISPOSAL OF ALL EFFLUENT ASSOCIATED WITH THE CONSTRUCTION ACTIVITY AND THE DISINFECTION AND HYDROTASTING OPERATIONS TO SAFEGUARD PUBLIC HEALTH AND SAFETY IN ACCORDANCE WITH APPLICABLE DEPARTMENT OF HEALTH REQUIREMENTS. ALL PERMITS AND LICENSES FOR CONSTRUCTION WATER DISPOSAL, INCLUDING ALL APPLICATIONS, CHARGES, FEES, AND TAXES, ARE THE RESPONSIBILITY OF THE CONTRACTOR.

- GENERAL COWTS NOTES**
1. NO DRAINS OR PRESSURE WATER SUPPLY LINES EXIST OR ARE TO BE CONSTRUCTED WITHIN REGULATION DISTANCES, EXCEPT WHERE NOTED. IN THESE AREAS, SEWER, DRAIN OR WATER LINES ARE TO BE SLEEVED AS SHOWN.
 2. ALL PUMPED LINES SHALL NOT DRAIN BACK TO THE PUMP CHAMBERS AND SHALL BE INSTALLED 4 FT BELOW GRADE. PROPER COMPACTION AND FORCE MAIN INSTALLATION SHALL BE PERFORMED TO ENSURE THAT NO LOW POINTS FORM BETWEEN PUMP ORIGIN COMPONENT AND DISCHARGE DESTINATION. AIR RELIEF VALVES SHALL BE INSTALLED AS NEEDED.
 3. ALL FORCE MAIN PIPING SHALL BE SDR21 WITH PRESSURE RATED JOINTS AND GASKETS. JOINTS TO BE PRESSURE RATED 200 PSI AND COMPLIANT WITH VACUUM REQUIREMENTS PER ASTM D3139.
 4. THE PROPOSED GRAVITY SEWER COLLECTION SYSTEM SHALL BE PRESSURE/VACUUM TESTED TO ENSURE THAT SURFACE OR GROUND WATER WILL NOT ENTER THE SYSTEM.

- PUBLIC HEALTH SAFETY AND CONVENIENCE NOTES**
1. CONTRACTOR SHALL OBSERVE AND COMPLY WITH ALL FEDERAL, STATE, AND LOCAL LAWS REQUIRED FOR THE PROTECTION OF PUBLIC HEALTH, SAFETY AND ENVIRONMENTAL QUALITY.
 2. THE CONTRACTOR AT HIS/HER EXPENSE, SHALL KEEP THE PROJECT AREA AND SURROUNDING AREA FREE FROM RUBBISH, DUST, NOISE, EROSION, ETC. THE WORK SHALL BE DONE IN CONFORMANCE WITH THE AIR AND WATER POLLUTION CONTROL STANDARDS AND REGULATIONS OF ALL APPLICABLE FEDERAL, STATE AND LOCAL AGENCIES.
 3. NO CONTRACTOR SHALL PERFORM ANY CONSTRUCTION OPERATION SO AS TO CAUSE FALLING ROCKS, SILT OR DEBRIS IN ANY FORM TO FALL, SLIDE OR FLOW ONTO ADJOINING PROPERTIES, STREETS OR NATURAL WATERCOURSES. SHOULD SUCH VIOLATIONS OCCUR, THE CONTRACTOR MAY BE OIATED AND THE CONTRACTOR SHALL IMMEDIATELY MAKE ALL REMEDIAL ACTIONS AS NECESSARY.
 4. THE CONTRACTOR SHALL PROVIDE, INSTALL AND MAINTAIN ALL NECESSARY SIGNS, LIGHTS, FLARES, BARRICADES, MARKERS, CONES, AND OTHER PROTECTIVE FACILITIES AND SHALL TAKE ALL NECESSARY PRECAUTIONS FOR THE PROTECTION, CONVENIENCE AND SAFETY OF THE PUBLIC.

- SOIL EROSION AND SEDIMENT CONTROL NOTES**
- A. DO NOT BEGIN CONSTRUCTION UNTIL ALL LOCAL, STATE, AND FEDERAL PERMITS HAVE BEEN APPLIED FOR AND RECEIVED.
 - B. CONSTRUCTION TRAFFIC SHALL ENTER AND EXIT THE SITE VIA EXISTING STABILIZED ENTRANCES. THE CONTRACTOR MAY INSTALL NEW ENTRANCES PER THE CONSTRUCTION ENTRANCE DETAIL SHOWN ON THIS SHEET.
 - C. DELINEATE AREAS OF PROPOSED INFILTRATION BASINS / BIORETENTION FILTERS. THESE AREAS SHALL NOT BE USED FOR SOIL OR EQUIPMENT STOCKPILING AND SHALL NOT BE TRAVERSED BY CONSTRUCTION EQUIPMENT.
 - D. INSTALL SILT FENCES AND STRAW BALES AS INDICATED ON THE DRAWINGS TO CONTROL EROSION AND PREVENT SEDIMENT CONTAMINATION OF WETLANDS PRIOR TO ANY EARTH MOVING ACTIVITIES.
 - E. REMOVE TREES ONLY WHERE NECESSARY. ALL STUMPS TO BE GROUND OR DISPOSED OF OFF SITE.
 - F. ROUGH GRADE ROADWAYS AND DRAINAGE FEATURES.
 - G. EXCAVATE FOREBAYS AND BIORETENTION FILTERS IN ACCORDANCE WITH THE PLANS AND DETAILS AND ESTABLISH A TEMPORARY VEGETATIVE GROWTH THAT MEETS THE APPROVAL OF THE TOWN ENGINEER.
 - H. CONSTRUCT SEWER CONVEYANCE AND UTILITIES.
 - I. FINAL GRADE ROADWAYS WITH COMPACTED GRAVEL.
 - J. COMPLETE LANDSCAPE AREAS.
 - K. REMOVE SEDIMENTS FROM BIORETENTION FILTERS, PLACE MEDIA LAYERS, AND INSTALL PLANTINGS.
 - L. MAINTAIN SITE IN ACCORDANCE WITH THE MAINTENANCE NOTES.

- 2. NOTES:**
- A. DURING CONSTRUCTION AND THEREAFTER, EROSION CONTROL MEASURES ARE TO BE IMPLEMENTED AS NOTED. ONLY THE SMALLEST PRACTICAL AREA OF LAND SHOULD BE EXPOSED AT ANY ONE TIME DURING DEVELOPMENT. WHEN LAND IS EXPOSED DURING DEVELOPMENT, THE EXPOSURE SHOULD BE KEPT TO THE SHORTEST PRACTICAL PERIOD OF TIME.
 - B. NO DRAINAGE AREAS SHALL BE USED FOR STOCKPILES OR STORAGE OF MATERIALS OR EQUIPMENT. THESE AREAS SHOULD BE DELINEATED IN THE FIELD PRIOR TO CONSTRUCTION.
 - C. ANY DISTURBED AREAS WHICH ARE TO BE LEFT TEMPORARILY AND WHICH WILL BE REGRADED LATER DURING CONSTRUCTION SHALL BE STABILIZED WITHIN FOURTEEN DAYS IN ACCORDANCE WITH TEMPORARY MEASURES IN THE VEGETATIVE PRACTICE NOTES.
 - D. AREAS TO BE FILLED SHALL BE CLEARED, GRUBBED, AND STRIPPED OF TOP SOIL TO REMOVE VEGETATION, ROOTS, AND ANY OTHER OBJECTIONABLE MATERIAL.
 - E. ALL FILL SHALL BE COMPACTED TO 95% MAX. DENSITY TO REDUCE EROSION, SLIPPAGE, SETTLEMENT SUBSIDENCE, OR OTHER RELATED PROBLEMS.
 - F. FILL INTENDED TO SUPPORT CONCRETE PADS AND CONDUITS, ETC., SHALL BE COMPACTED IN ACCORDANCE WITH LOCAL CODES AND SPECIFICATIONS.
 - G. ALL FILL SHALL BE PLACED AND COMPACTED TO 95% MAX. DENSITY IN LAYERS NOT TO EXCEED 12" IN THICKNESS FILLS.
 - H. FILL MATERIAL SHALL BE FREE OF BRUSH, RUBBISH, ROCKS, LOGS, STUMPS, BUILDING DEBRIS, AND OTHER OBJECTIONABLE MATERIALS THAT WOULD INTERFERE WITH OR PREVENT CONSTRUCTION OF SATISFACTORY FILLS.
 - I. FROZEN, SOFT, MUCKY, OR HIGHLY COMPRESSIBLE MATERIAL SHALL NOT BE INCORPORATED INTO FILLS.
 - J. FILL SHALL NOT BE PLACED ON A FROZEN FOUNDATION SUBGRADE.
 - K. KEEPS OR SPRINGS ENCOUNTERED DURING CONSTRUCTION SHALL BE BROUGHT TO THE ATTENTION OF THE DESIGN ENGINEER.
 - L. ALL DISTURBED AREAS SHALL BE STABILIZED WITHIN 14 DAYS OF FINISH GRADING IN ACCORDANCE WITH THE VEGETATIVE PRACTICE NOTES.
 - M. TEMPORARY SOIL STOCKPILES SHALL BE PLACED IN AREAS OF EXISTING DISTURBANCE AND SHALL BE PROTECTED BY A DOWNSTREAM SILT FENCE BARRIER.
 - N. REMOVE TEMPORARY EROSION CONTROL MEASURES ONCE UPSLOPE AREAS HAVE BEEN PERMANENTLY STABILIZED AND VEGETATED AREAS HAVE RECEIVED TWO MOWINGS.

- 3. VEGETATIVE PRACTICE:**
- PERMANENT MEASURES:**
- A. SLOPES SHALL NOT BE STEEPER THAN 1 VERTICAL TO 3 HORIZONTAL UNLESS OTHERWISE SPECIFIED.
 - B. LOAM AND SEED REQUIREMENTS ARE SPECIFIED IN RIDOT L01 & L02.
 - C. A MINIMUM OF 4 INCHES OF LOAM SHALL BE INSTALLED. THE LOAM SHALL BE GRADED TO A SMOOTH CONDITION AND STONES AND OTHER OBJECTS LARGER THAN 2 INCHES SHALL BE REMOVED.
- TEMPORARY MEASURES (FOR TEMPORARY PROTECTION OF DISTURBED AREAS)**
- D. LIMESTONE AND FERTILIZER SHALL BE APPLIED AT THE FOLLOWING RATE:
LIMESTONE: 3 TONS/ACRE
FERTILIZER: (10-10-10); 600 LBS/ACRE
 - E. SEED SHALL BE APPLIED AT THE FOLLOWING RATE:
WINTER RYE: 100 LBS/ACRE
 - F. STRAW MULCH SHALL BE APPLIED AT THE RATE OF 1.5 TONS/ACRE.

- 4. MAINTENANCE**
- DURING THE PERIOD OF CONSTRUCTION AND/OR UNTIL LONG TERM VEGETATION IS ESTABLISHED, THE EROSION CONTROL MEASURES SHALL BE INSPECTED.**
- A. AT A MINIMUM THE SILT FENCING, STRAW BALES SHALL BE INSPECTED AND REPAIRED ONCE A WEEK AND / OR IMMEDIATELY FOLLOWING A SIGNIFICANT RAINFALL OR SNOWMELT. SEDIMENT TRAPPED BEHIND THE BARRIERS SHALL BE EXCAVATED WHEN IT REACHES A DEPTH OF 6" AND REGRADED ON THE SITE.
 - B. EROSION CONTROL BLANKETS SHALL BE INSPECTED ON A WEEKLY BASIS.
 - C. STONE APRONS SHALL BE INSPECTED MONTHLY FOR EXCESSIVE ACCUMULATION OF SEDIMENT. IT MAY BE NECESSARY TO REMOVE STONES, EXCAVATE SEDIMENT, AND REPLACE STONES.
 - D. SEEDED AREAS WILL BE FERTILIZED AND RESEED AS NECESSARY TO INSURE ESTABLISHMENT OF A VEGETATIVE GROWTH THAT MEETS THE APPROVAL OF THE TOWN ENGINEER.

- STORMWATER MAINTENANCE NOTES**
1. BIORETENTION FILTER MAINTENANCE:
 - a. GRASSES AND/OR SPECIFIED VEGETATION SHALL BE PLANTED AROUND AND WITHIN EACH BIORETENTION FILTER IMMEDIATELY FOLLOWING CONSTRUCTION TO STABILIZE SLOPES AND PREVENT EROSION.
 - b. EACH BIORETENTION FILTER SHOULD BE INSPECTED FOLLOWING AT LEAST THE FIRST TWO PRECIPITATION EVENTS OF AT LEAST 1.0 INCH TO ENSURE THAT THE SYSTEM IS FUNCTIONING PROPERLY. THEREAFTER, THE FILTER SHOULD BE INSPECTED AT LEAST ANNUALLY AND AFTER STORM EVENTS OF GREATER THAN OR EQUAL THE 1-YEAR, 24-HOUR TYPE III PRECIPITATION EVENT (2.7 INCHES). SEDIMENTS COLLECTED WITHIN THE TOP STRATA OF THE FILTER SHALL BE REMOVED ON AN ANNUAL BASIS AND STOCKPILED ON SITE. THESE SEDIMENTS SHALL BE USED FOR GRADING ERODED AREAS ON SITE, OR SHALL BE DISPOSED OF AT A LICENSED OFF-SITE FACILITY IF NOT NEEDED.
 - c. THE FOLLOWING SHALL ALSO BE COMPLETED ON AN ANNUAL BASIS:
 - i. THE SLOPES OF THE FILTERS SHOULD BE INSPECTED FOR EROSION AND GULLYING.
 - ii. REINFORCE ANY EXISTING RIPRAP IF IT IS FOUND TO BE DEFICIENT, EROSION IS PRESENT AT THE OUTLET STRUCTURES, OR ANY EXISTING RIPRAP HAS BEEN COMPROMISED.
 - iii. THE UNDERDRAIN RISERS OR OVERFLOW OUTLET STRUCTURES SHALL BE INSPECTED FOR LEAKY JOINTS OR CRUSHED LINES. UNDERDRAIN AND OUTLET PIPES SHALL BE CLEAN AND FREE OF MATERIALS THAT CAN REDUCE FLOW.
 - iv. ANY AREAS WITHIN THE EXTENTS OF THE FILTER THAT ARE SUBJECT TO EROSION OR GULLYING SHOULD BE REPLACED WITH THE ORIGINAL DESIGN MATERIAL, AND RE-VEGETATED ACCORDING TO DESIGN DRAWINGS. SLOPE PROTECTION MATERIAL SHOULD BE PLACED IN AREAS PRONE TO EROSION. EMBANKMENT STABILITY SHOULD BE INSPECTED FOR SEEPAGE AND BURROWING ANIMALS.
 - v. MOW THE GRASS AROUND THE PERIMETER OF THE FILTERS, SEED BARE AREAS, AND REMOVE LITTER AND DEBRIS AT LEAST THREE TIMES PER GROWING SEASON. REMOVE ANY INVASIVE VEGETATION WITHIN THE EXTENTS OF THE FILTERS. ANY INVASIVE VEGETATION ENCRANCHING UPON THE PERIMETER OF THE FILTER SHOULD BE PRUNED OR REMOVED IF IT IS PROHIBITING ACCESS TO THE FILTERS, COMPROMISING SIGHT VISIBILITY, AND/OR COMPROMISING THE ORIGINAL DESIGN INTENT.
 - vi. SILT/SEDIMENT SHOULD BE REMOVED FROM THE FILTER BEDS ANNUALLY, WHEN ACCUMULATION EXCEEDS 1 INCH, OR WHEN THE FILTERING CAPACITY DIMINISHES SUBSTANTIALLY.
 - d. THE FOLLOWING SHALL ALSO BE COMPLETED ON A BIENNIAL BASIS (EVERY TWO YEARS):
 - i. THE MULCH LAYER SHOULD BE REPLENISHED (TO ORIGINAL DESIGN DEPTH) EVERY OTHER YEAR, AS DIRECTED BY THE INSPECTION REPORTS. THE PREVIOUS MULCH LAYER SHOULD BE REMOVED, AND PROPERLY DISPOSED OF, OR ROTO-TILLED INTO THE SOIL SURFACE.
 - ii. IF AT LEAST 50 PERCENT VEGETATION COVERAGE IS NOT ESTABLISHED AFTER TWO YEARS, A REINFORCEMENT PLANTING SHOULD BE PERFORMED.
 - iii. IF THE SURFACE OF A BIORETENTION FILTER BECOMES CLOGGED TO THE POINT THAT THE STANDING WATER IS OBSERVED ON THE SURFACE 48 HOURS AFTER PRECIPITATION EVENTS, THE SURFACE SHOULD BE ROTO-TILLED OR CULTIVATED TO BREAK UP ANY HARD-PACKED SEDIMENT AND THEN REVEGETATED.
2. SEDIMENT FOREBAY MAINTENANCE:
 - a. EACH FOREBAY SHOULD BE INSPECTED FOLLOWING AT LEAST THE FIRST TWO PRECIPITATION EVENTS OF AT LEAST 1.0 INCH TO ENSURE THAT THE SYSTEM IS FUNCTIONING PROPERLY. THEREAFTER, THE FOREBAY SHOULD BE INSPECTED AT LEAST ONCE A MONTH AND AFTER STORM EVENTS OF GREATER THAN OR EQUAL THE 1-YEAR, 24-HOUR TYPE III PRECIPITATION EVENT (2.7 INCHES). SEDIMENTS SHALL BE DISPOSED OF ONCE 25% OF THE VOLUME OF THE FOREBAY HAS ACCUMULATED.
3. RIPRAP SPILLWAY MAINTENANCE:
 - a. THE SPILLWAY SHOULD BE INSPECTED ANNUALLY FOR EROSION AND DETERIORATION. RIPRAP SHOULD BE REPLACED IN KIND AS NECESSARY TO COMPLETELY COVER THE SPILLWAY IN THE DIMENSIONS DESIGNATED IN THE ORIGINAL DESIGN DOCUMENTS. SHOULD EXCESSIVE STONE WASHOUT BE OBSERVED, A REGISTERED PROFESSIONAL ENGINEER SHOULD BE CONSULTED.
4. MAINTENANCE OF THE STORMWATER SYSTEM DURING CONSTRUCTION OF THE PROJECT SHALL BE THE RESPONSIBILITY OF THE CONTRACTOR.
5. UPON COMPLETION OF THE CONSTRUCTION, MAINTENANCE OF THE STORMWATER SYSTEM SHALL BECOME THE RESPONSIBILITY OF THE OWNER.

DEPARTMENT OF ENVIRONMENTAL MANAGEMENT
OFFICE OF WATER RESOURCES
FRESHWATER WETLANDS PROGRAM
APPROVED WITH CONDITIONS
AS SPECIFIED IN THE LETTER OF APPROVAL
DATED 16 MAR 17 2017 FILE # 16-0297
NO CHANGES ALLOWED WITHOUT PRIOR APPROVAL
OF THE DEPARTMENT OF ENVIRONMENTAL MANAGEMENT

JAN 26 2017

Kindly be advised that this Permit is not valid without a verification of the type or amount of freshwater wetlands on site.

No.	Revision	Date	App.
1		16JAN17	
2			

Designed By: JJR Drawn by: VAL Checked by: GES
Scale: AS SHOWN Date: 13OCT16

Project Title:
**MELVILLE PONDS CAMPGROUND
A.P. 43 & LOT 1A
181 BRADFORD AVENUE
PORTSMOUTH, RHODE ISLAND 02871**

Client/Owner:
**JUSTIN MAY
41 SAWMILL ROAD
PO BOX 425, HOPE VALLEY, RI 02832**

Issued for:
PERMITTING

Drawing Title:
DETAIL SHEET 2

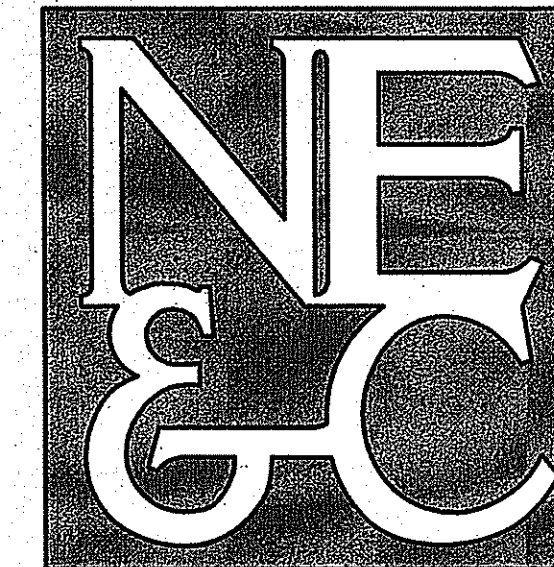
Drawing Number:
C-8

Sheet **8** of **9**

Project Number:
15190.0

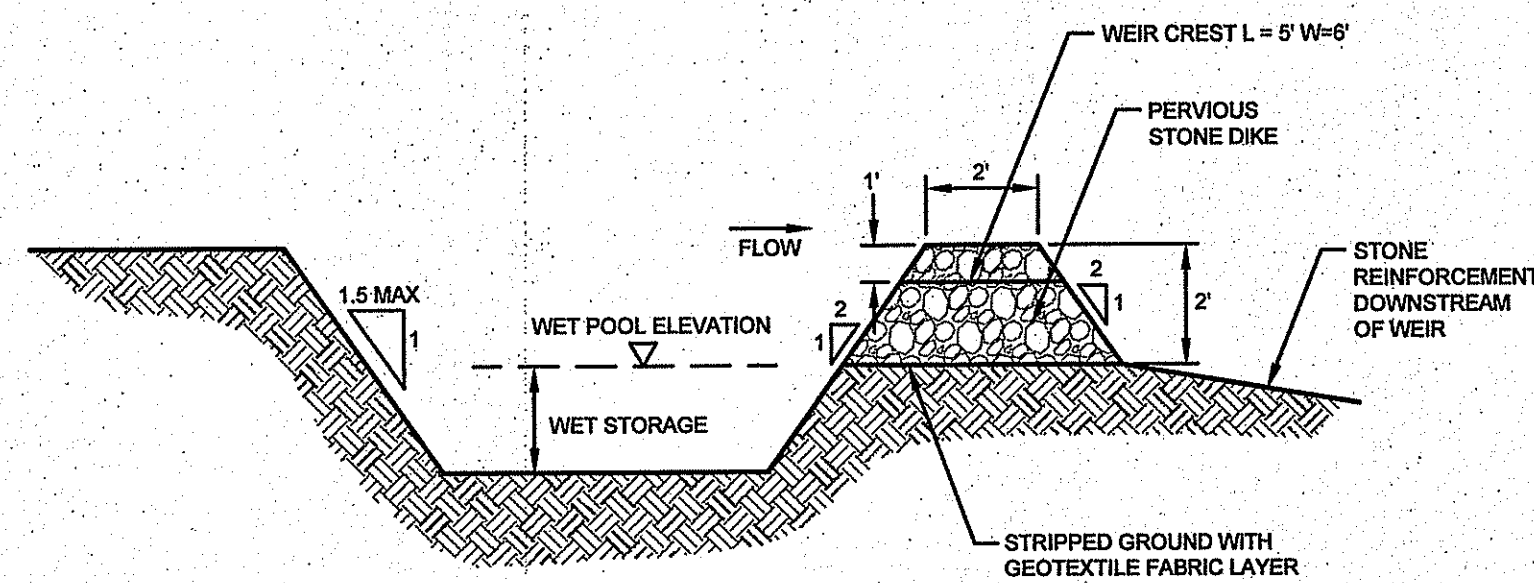
Survey Index:
-

OWNERSHIP AND USE OF DOCUMENTS: DRAWINGS AND SPECIFICATIONS, AS INSTRUMENTS OF PROFESSIONAL SERVICE, ARE AND SHALL REMAIN THE PROPERTY OF THE ENGINEER. THESE DOCUMENTS ARE NOT TO BE USED, IN WHOLE OR PART, FOR ANY OTHER PROJECTS OR PURPOSES, OR BY ANY OTHER PARTIES, THAN THOSE PROPERLY AUTHORIZED BY CONTRACT, WITHOUT THE EXPRESS AUTHORIZATION OF THE ENGINEER.

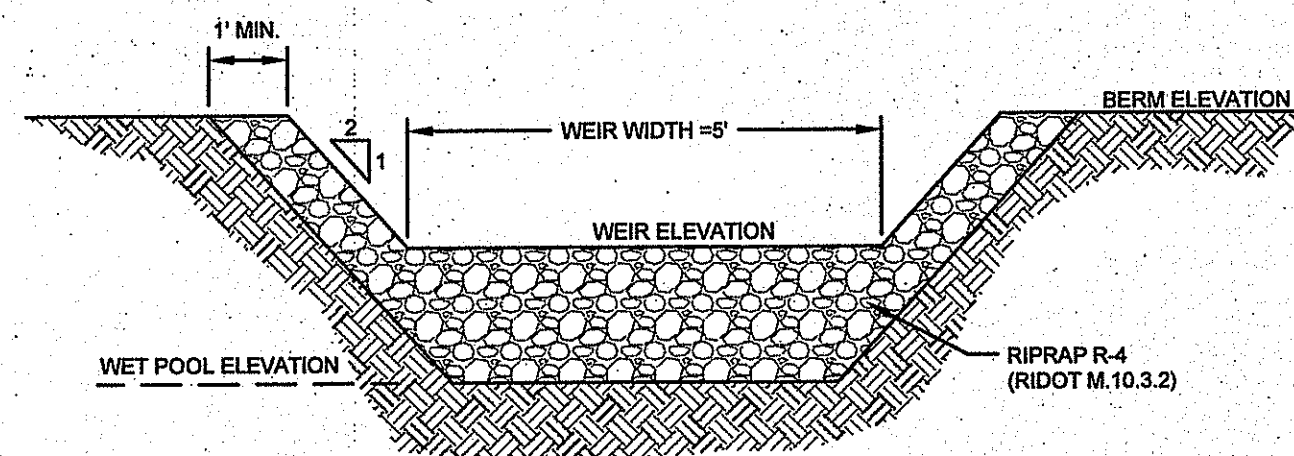


A KNOWLEDGE CORPORATION®

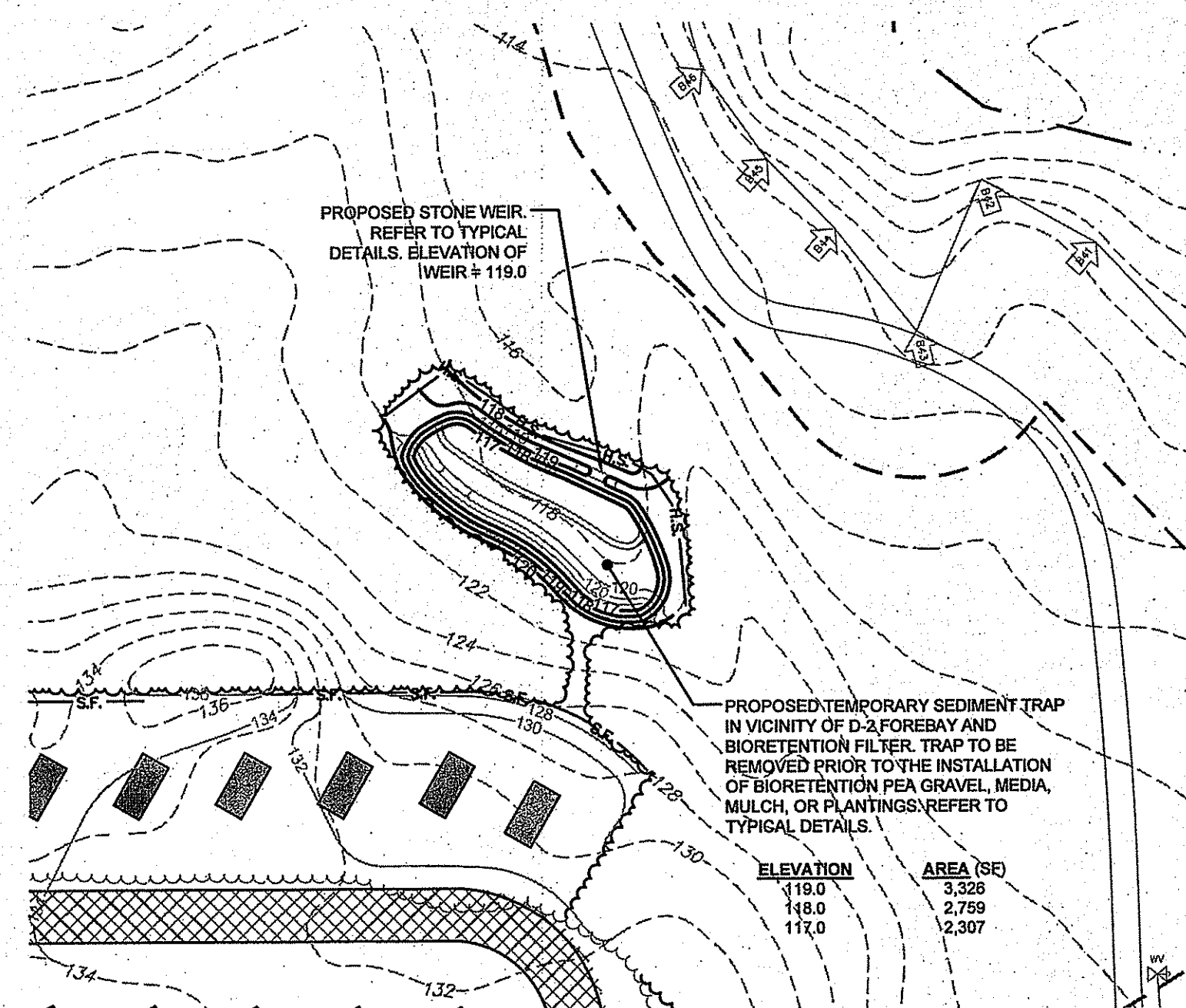
55 JOHN CLARKE ROAD MIDDLETOWN RHODE ISLAND 02842
PHONE (401) 849-0810 FAX (401) 846-4169
WWW.NORTHEASTENGINEERS.COM



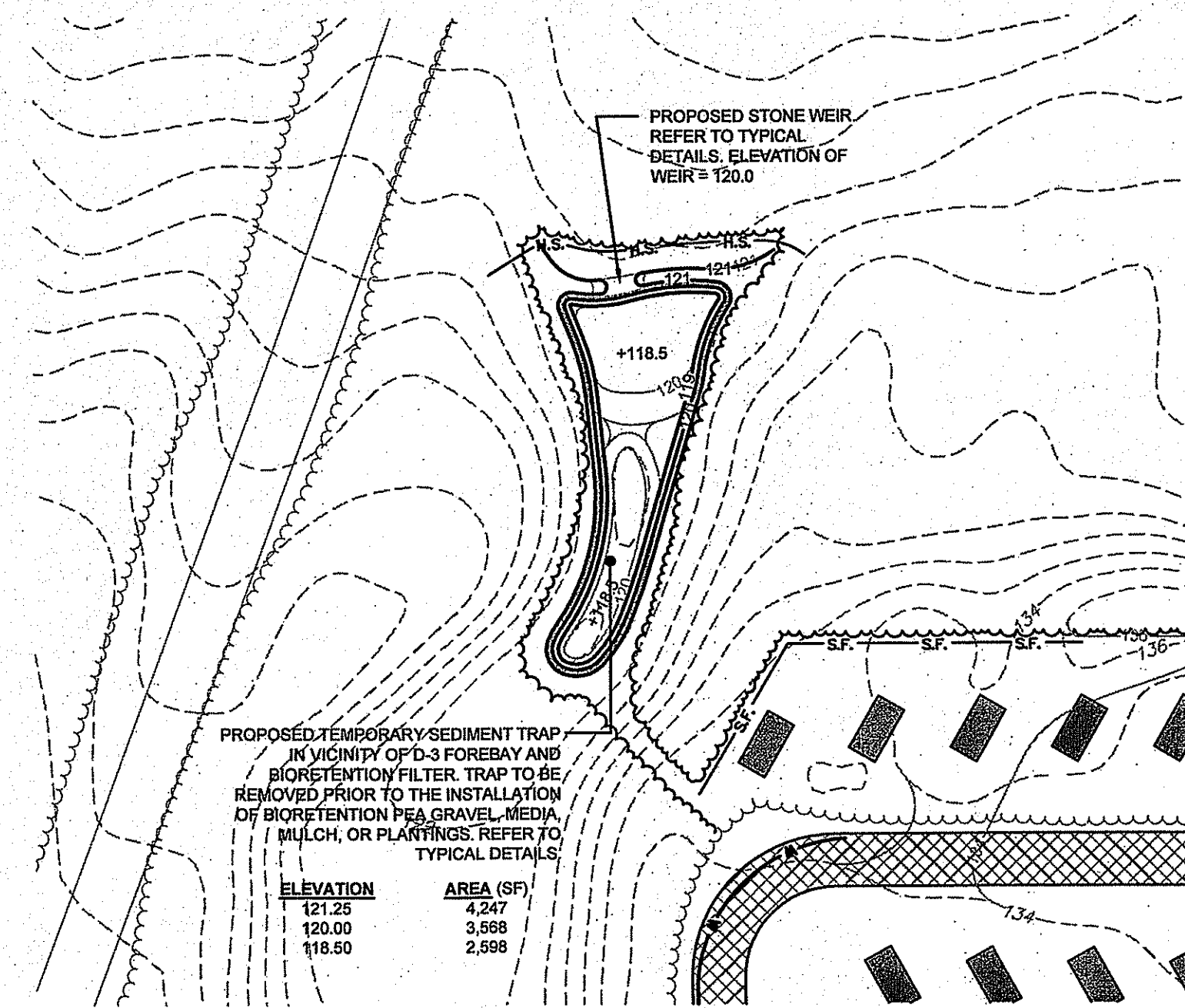
PROFILE SECTION



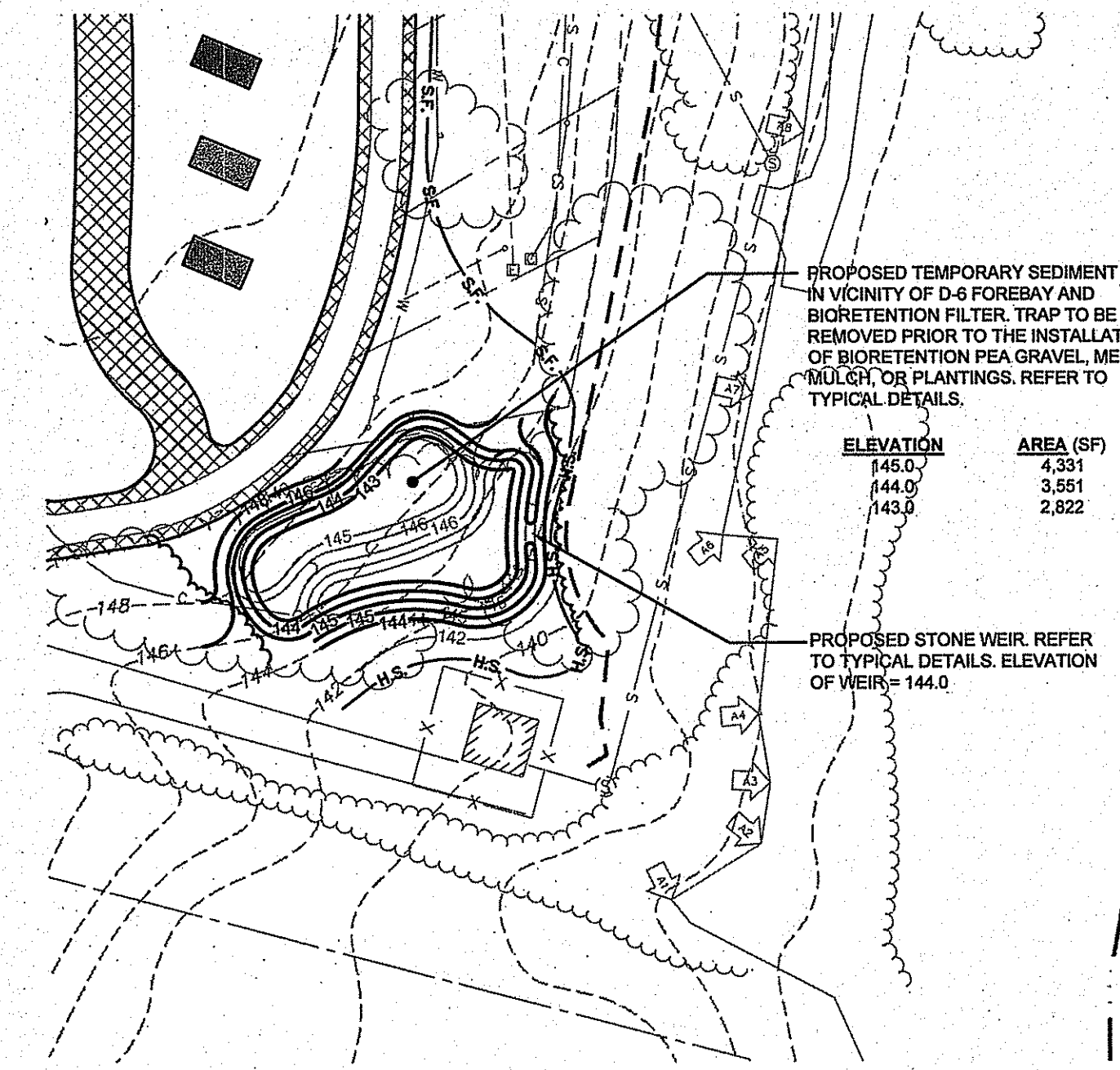
TYPICAL SEDIMENT TRAP DETAILS
SCALE: NOT TO SCALE



TEMPORARY SEDIMENT TRAP ST-2 (VICINITY OF D-2)
SCALE: 1" = 50'



TEMPORARY SEDIMENT TRAP ST-3 (VICINITY OF D-3)
SCALE: 1" = 50'



TEMPORARY SEDIMENT TRAP ST-6 (VICINITY OF D-6)
SCALE: 1" = 50'

Kindly be advised that this Permit is not equivalent to a verification of the type or extent of freshwater wetlands on site.

DEPARTMENT OF ENVIRONMENTAL MANAGEMENT
OFFICE OF WATER RESOURCES
FRESHWATER WETLANDS PROGRAM
APPROVED WITH CONDITIONS
AS SPECIFIED IN THE LETTER OF APPROVAL
DATED **MAR 17 2017** FILE # **16-0297**
NO CHANGES ALLOWED WITHOUT PRIOR APPROVAL
APPROVED PLANS MUST BE AT CONSTRUCTION SITE

Martin D. Senek

No.	Revision	Date	App.
1		16JAN17	

Designed By: JJR Drawn by: VAL Checked by: GES
Scale: AS SHOWN Date: 13OCT16

Project Title:
**MELVILLE PONDS CAMPGROUND
A.P. 43 & LOT 1A
181 BRADFORD AVENUE
PORTSMOUTH, RHODE ISLAND 02871**

Client/Owner:
**JUSTIN MAY
41 SAWMILL ROAD
PO BOX 425, HOPE VALLEY, RI 02832**

Issued for:
PERMITTING

Drawing Title:
DETAIL SHEET 3

	Drawing Number:	C-9
	Sheet	9 of 9
	Project Number:	15190.0
	Survey Index:	-

OWNERSHIP AND USE OF DOCUMENTS: DRAWINGS AND SPECIFICATIONS, AS INSTRUMENTS OF PROFESSIONAL SERVICE, ARE AND SHALL REMAIN THE PROPERTY OF THE ENGINEER. THESE DOCUMENTS ARE NOT TO BE USED, IN WHOLE OR PART, FOR ANY OTHER PROJECTS OR PURPOSES, OR BY ANY OTHER PARTIES, THAN THOSE PROPERLY AUTHORIZED BY CONTRACT, WITHOUT THE EXPRESS AUTHORIZATION OF THE ENGINEER.