

**INDEX**

SHEET NO.	DESCRIPTION
1	COVER SHEET
2	STANDARD PLAN SYMBOLS & STANDARD LEGEND
3-4	STANDARD NOTES NOS. 1-2
5	JOB - SPECIFIC PLAN SYMBOLS, LEGEND & NOTES
6-7	DETAIL SHEET NOS. 1-2
8	KEY PLAN
9	TYPICAL SECTIONS
10-11	GENERAL PLAN NOS. 1-2
12-13	LOCATION PLAN NOS. 1-2
14-15	DRAINAGE AND GRADING PLAN NOS. 1-2
16-17	SIGNING AND STRIPING PLAN NOS. 1-2
18	TRAFFIC SIGNAL PLAN
19-20	PLANTING PLAN NOS. 1-2
21	MAINTENANCE & PROTECTION OF TRAFFIC PLAN
22-26	CROSS SECTION NOS. 1-5

STATE OF RHODE ISLAND



**DEPARTMENT OF TRANSPORTATION**

PLAN, PROFILE AND SECTIONS OF PROPOSED

**STATE HIGHWAY**

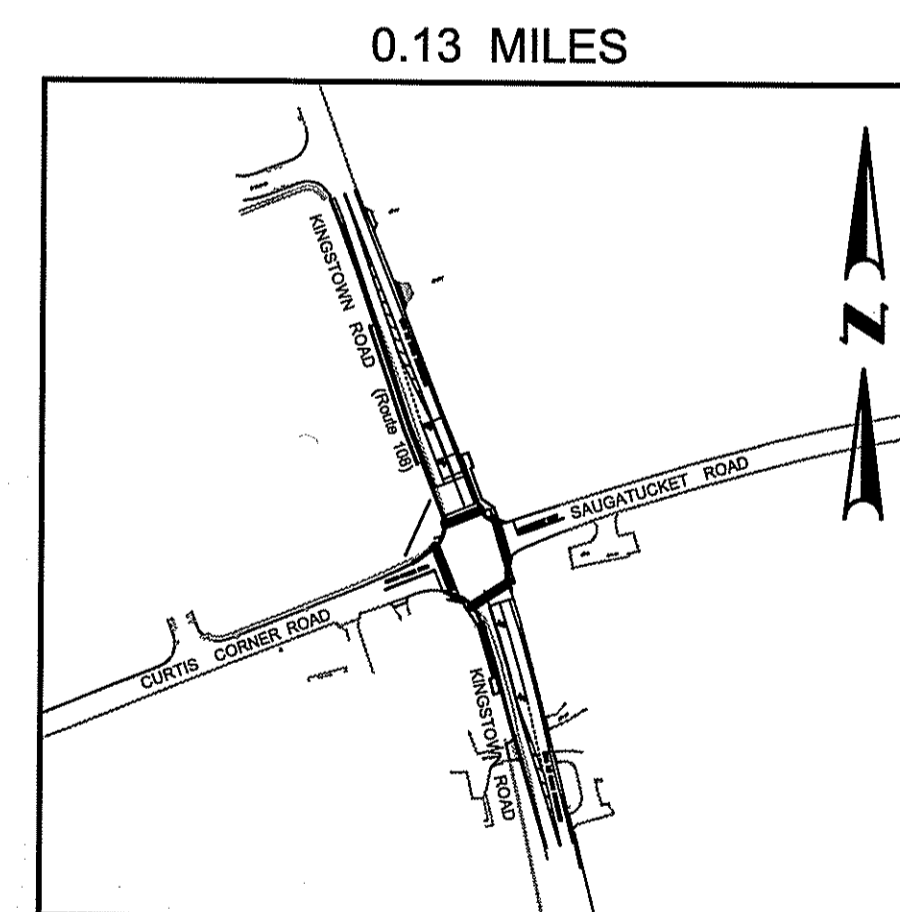
**INTERSECTION SAFETY IMPROVEMENTS TO  
ROUTE 108 AT CURTIS CORNER ROAD**

TOWN OF SOUTH KINGSTOWN  
COUNTY OF WASHINGTON

R.I. CONTRACT NO. 2006-ET-006 F.A. PROJECT NO. STP-0202(102)

**PAVEMENT STRUCTURE**

- |                              |                            |
|------------------------------|----------------------------|
| <b>FULL DEPTH</b>            | <b>MILL/OVERLAY</b>        |
| - 2" MODIFIED CLASS 12.5 HMA | - 2" MICROMILLING AND      |
| - 6" CLASS 19 HMA            | REPAVING WITH              |
| - 12" GRAVEL BORROW SUBBASE  | 2" MODIFIED CLASS 12.5 HMA |



LAYOUT PLAN - VOLUME 1  
1" = 200'

**SCALES OF DRAWINGS**

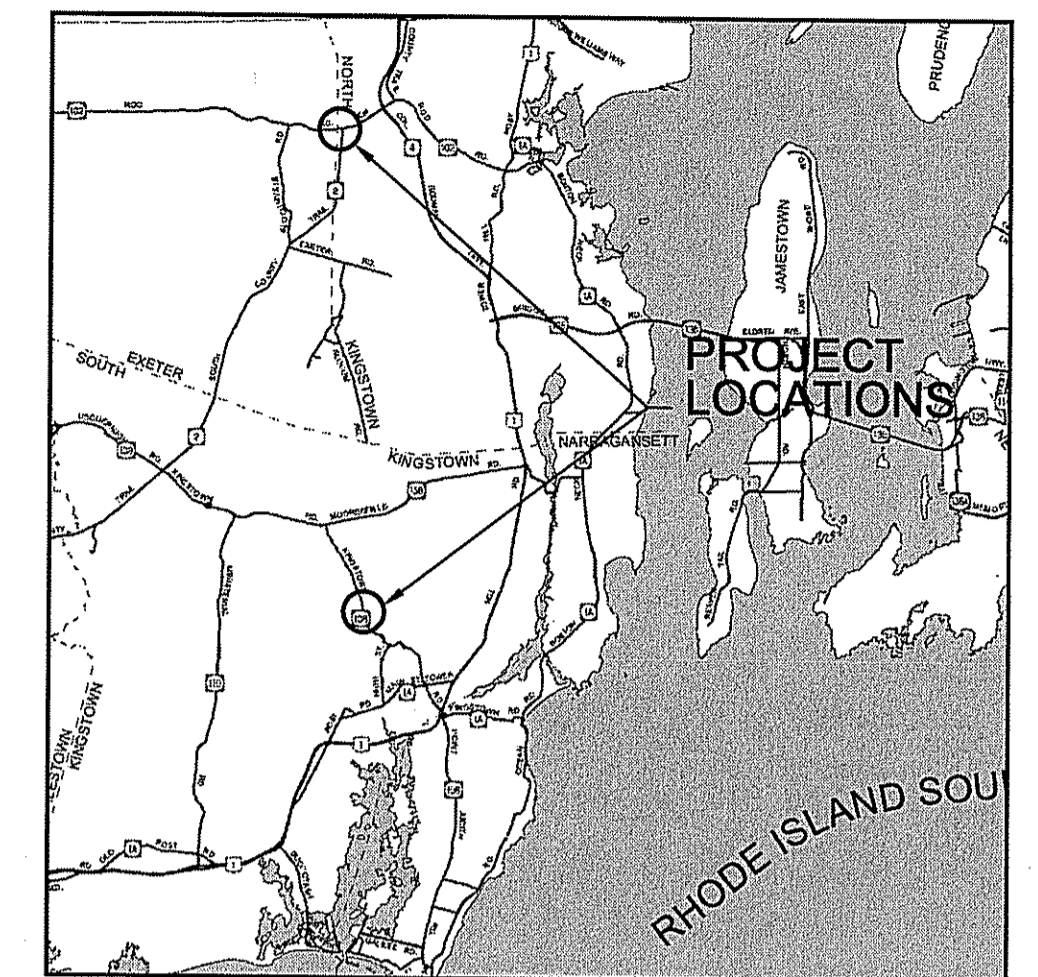
Plans	1 inch = 20 feet
Profiles	1 inch = 20 feet Horizontal
Profiles	1 inch = 4 feet Vertical
Cross Sections	1 inch = 4 feet Horizontal
Cross Sections	1 inch = 4 feet Vertical

BASE OF LEVELS  
NAVD 88

NAD 83(2011) (2010.00)

R.I. STANDARD SPECIFICATIONS AND STANDARD DETAILS  
SPECIFICATIONS TO GOVERN THIS PROJECT ARE THE R.I. STANDARD SPECIFICATIONS FOR ROAD AND BRIDGE CONSTRUCTION, AMENDED AUGUST 2013, WITH ALL REVISIONS AND THE STATE AND FEDERAL SPECIAL PROVISIONS INCLUDED IN THE CONTRACT DOCUMENTS. STANDARD DETAILS FOR THIS PROJECT ARE R.I. STANDARD DETAILS, 1998 EDITION, WITH ALL REVISIONS.

FED. ROAD DIV. NO.	STATE	FEDERAL AID PROJECT NO.	FISCAL YEAR	SHEET NO.	TOTAL SHEETS
1	RI	STP-0202(102)	2017	1	26



LOCATION MAP  
NOT TO SCALE

Kindly be advised that this Permit is not equivalent to a verification of the type or extent of freshwater wetlands on site.

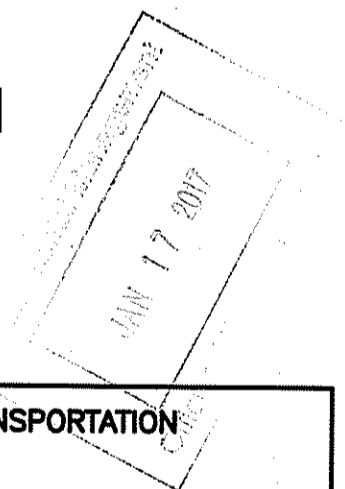
DESIGN	DESIGNATION
TOWN OF SOUTH KINGSTOWN	
AADT	23,000 V.P.D. (2017)
D	53/47
K	8.8%
T	4%
DDHV	1075 V.P.H.
DHV	2025 V.P.H.
DESIGN SPEED	25 M.P.H.

DEPARTMENT OF ENVIRONMENTAL MANAGEMENT  
OFFICE OF WATER RESOURCES  
FRESHWATER WETLANDS PROGRAM  
REVIEWED SITE PLAN APPLICATION NO. 16-0298  
DATED FEB 17 2017  
SEE LETTER OF SAME DATE.

**HURRICANE EVACUATION ROUTE**

THIS PROJECT INCLUDES WORK ON A DESIGNATED HURRICANE EVACUATION AND DIVERSIONARY ROUTE AS FOLLOWS:  
- KINGSTOWN RD (RT-108) AT SAUGATUCKET RD/CURTIS CORNER RD. REFER TO NOTE D ON SHEET 5

**DEM SUBMISSION**



MADAN M. GUPTA  
REGISTERED PROFESSIONAL ENGINEER  
CIVIL

R.I. DEPARTMENT OF TRANSPORTATION	
APPROVED	
DEPUTY CHIEF ENGINEER	DATE
APPROVED	
CHIEF ENGINEER	DATE
APPROVED	
DIRECTOR	DATE
DEPARTMENT OF TRANSPORTATION FEDERAL HIGHWAY ADMINISTRATION	
APPROVED	
DIVISION ADMINISTRATOR	DATE

Contract Number 2006-ET-006

Number of Sheet 1

Total Sheets 26

**GM2 ASSOCIATES**  
GM2 Associates, Inc.  
Consulting Engineers  
115 Glastonbury Boulevard  
Glastonbury, CT 06033





FED. ROAD DIV. NO.	STATE	FEDERAL AID PROJECT NO.	FISCAL YEAR	SHEET NO.	TOTAL SHEETS
1	R.I.	STP-0202(102)	2017	4	26

**LANDSCAPE NOTES:**

- ALL PLANT MATERIAL MUST BE TAGGED AT THE NURSERY (A RECOGNIZED GROWER OF PLANT MATERIAL) IN ACCORDANCE WITH THE R.I.D.O.T. STANDARD SPECIFICATIONS, LATEST EDITION. ALL PLANT MATERIAL MUST BE NURSERY GROWN; NO PLANTATION GROWN PLANT MATERIAL WILL BE ACCEPTED.
- ALL PLANT SUBSTITUTIONS AND/OR CHANGES IN PLANT LOCATION MUST BE APPROVED IN ACCORDANCE WITH THE R.I.D.O.T. STANDARD SPECIFICATIONS, LATEST EDITION.
- ALL PLANT MATERIAL IS TO BE FIELD LOCATED BY A REPRESENTATIVE FROM THE R.I.D.O.T. LANDSCAPE ARCHITECTURE UNIT.
- A R.I.D.O.T. LANDSCAPE REPRESENTATIVE MUST BE ON SITE TO APPROVE ALL TRIMMING AND CLEARING NECESSARY TO COMPLETE THE WORK AS SHOWN ON THE PLANS.
- ANY TOPSOIL USED AS PLANTABLE SOIL SHALL HAVE A SANDY LOAM TEXTURE RELATIVELY FREE OF SUBSOIL MATERIAL, STONES, ROOTS, LUMPS OF SOIL, TREE LIMBS, TRASH OR CONSTRUCTION DEBRIS, AND SHALL CONFORM TO SECTION M.18 OF THE R.I.D.O.T. STANDARD SPECIFICATIONS, LATEST EDITION.
- ALL TREES AND SHRUBS SHALL BE MULCHED WITH PINE BARK MULCH IN ACCORDANCE WITH THE R.I.D.O.T. STANDARD SPECIFICATIONS, LATEST EDITION.
- ALL TREES AND/OR SHRUBS THAT ARE PLANTED AS A BED SHALL BE MULCHED AS A BED.
- PROVIDE A MINIMUM 6"-8" BRANCHING STANDARD ON ALL TREES INSTALLED ADJACENT TO SIDEWALKS AND/OR PEDESTRIAN ACCESS AREAS.

**STRUCTURAL NOTES FOR HIGHWAY SIGNS, LUMINAIRES AND TRAFFIC SIGNALS:**

**GENERAL**

- ALL SUPPORT DESIGNS AND ASSOCIATED SHOP DRAWING REVIEWS SHALL BE IN CONFORMANCE WITH THE LATEST EDITION, OF THE AASHTO STANDARD SPECIFICATIONS FOR STRUCTURAL SUPPORTS FOR HIGHWAY SIGNS, LUMINAIRES AND TRAFFIC SIGNALS (THE "SPECIFICATIONS"), INCLUDING THE LATEST INTERIM SPECIFICATIONS, EXCEPT AS MODIFIED HEREIN.

**CONSTRUCTION DRAWINGS AND DETAILS**

- THE FOLLOWING NOTES SHALL BE INCLUDED ON ALL PLANS AND/OR SHOP DRAWINGS IN REFERENCE TO ANCHOR BOLTS:
  - "PRETENSIONING OF ALL ANCHOR NUTS IS REQUIRED, AND SHALL BE ACCOMPLISHED BY TIGHTENING TO 1/6TH TURN BEYOND THE SNUG-TIGHT POSITION."
  - "THE MAXIMUM CLEARANCE BETWEEN THE BOTTOM OF THE LEVELING NUTS AND THE TOP OF THE CONCRETE IS CRITICAL AND SHALL NOT EXCEED THE AMOUNT SPECIFIED ON THIS DRAWING."
- THE USE OF GROUT UNDER BASE PLATES SHALL GENERALLY NOT BE PERMITTED. IF SPECIFIC CONDITIONS WARRANT ITS USE, THE GROUT SHALL NOT BE CONSIDERED LOAD CARRYING; LOADS SHALL BE DIRECTLY SUPPORTED BY THE ANCHOR BOLTS. ADEQUATE DRAINAGE SHALL BE PROVIDED.
- THE DAMPENING EFFECTS OF VIBRATION MITIGATION DEVICES SHALL NOT BE CONSIDERED IN THE DESIGN OF STRUCTURAL SUPPORTS FOR SIGNS AND TRAFFIC SIGNALS. IF THE CONTRACTOR CHOOSES TO USE THESE DEVICES FOR WARRANTY PURPOSES, THE TYPE OF DEVICES PROPOSED SHALL BE APPROVED BY THE DEPARTMENT PRIOR TO FABRICATION OF SUPPORTS.

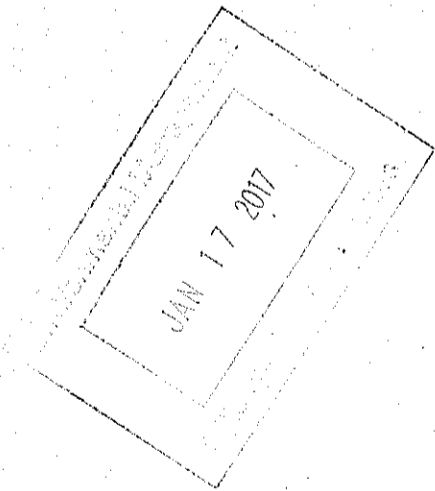
**TRAFFIC SIGNAL NOTES:**

- ALL SALVAGED TRAFFIC SIGNAL EQUIPMENT SHALL BE DELIVERED TO THE R.I.D.O.T. MAINTENANCE HEADQUARTERS, 360 LINCOLN AVENUE, WARWICK, RHODE ISLAND, 02888.
- BACK PLATES SHALL BE INSTALLED ON ALL TRAFFIC SIGNAL HEADS.
- THE CONTRACTOR SHALL SUPPLY AND INSTALL ON THE UPPER LEFT HAND CORNER OF THE BACK OF THE CONTROLLER CABINET DOOR A LAMINATED INTERSECTION GRAPHIC AND TABLE DEPICTING THE TRAFFIC DETECTOR RELAY CHANNEL ASSIGNMENTS. THE DIAGRAM SHALL BE A GRAPHIC OF THE INDIVIDUAL INTERSECTION ORIENTED SIMILAR TO THE PLANS SHOWING THE LOCATIONS OF EACH OF THE LOOP DETECTORS. THE DIAGRAM SHALL, AT A MINIMUM, INCLUDE DETECTOR NUMBERS, STREET NAME LABELS, NORTH ARROW, AND CONTROLLER CABINET LOCATION. THE ASSIGNMENT INFORMATION SHALL BE INCLUDED IN A TABLE WHICH SHALL INCLUDE, AT A MINIMUM, THE APPROACH NAME, DETECTOR NUMBER, TERMINAL NUMBER, DETECTOR RACK SLOT NUMBER, RELAY NUMBER, RELAY CHANNEL NUMBER, AND PHASE ASSOCIATED WITH EACH DETECTOR.
- TRAFFIC CONTROLLER CABINETS, UNLESS OTHERWISE NOTED, SHALL BE NEMA TS2 TYPE 1 CABINET SIZE 6 ("P" TYPE) WITH NOMINAL DIMENSIONS OF 52"Hx44"Wx24"D.
- ALL DELAY AND EXTENSION TIMES, AS CALLED FOR ON THE PLANS, FOR PROPOSED LOOP DETECTORS SHALL BE PROGRAMMED IN THE TRAFFIC SIGNAL CONTROLLER AND NOT THE DETECTOR RELAY.
- A BARE GROUND WIRE SHALL BE PLACED IN ALL PVC CONDUITS AND SHALL BE BONDED TO GROUND RODS IN ACCORDANCE WITH SECTION T.03 OF THE RHODE ISLAND DEPARTMENT OF TRANSPORTATION STANDARD SPECIFICATIONS FOR ROAD AND BRIDGE CONSTRUCTION.
- THE FINAL POSITION OF SIGNAL HEADS, PEDESTRIAN PUSHBUTTONS, DETECTORS, AND STOP LINE AND CROSSWALK PAVEMENT MARKINGS SHALL BE AS DIRECTED BY THE ENGINEER IN THE FIELD ACCORDING TO ACTUAL INTERSECTION CHARACTERISTICS.
- A 2' MINIMUM BUFFER SHALL BE PROVIDED BETWEEN THE CURB AND ALL LATERAL OBSTRUCTIONS (INCLUDING ALL SIGNAL POLES AND TRAFFIC/PEDESTRIAN SIGNAL HEADS) TO PROVIDE ADEQUATE CLEARANCE FOR TURNING VEHICLES.
- ALL FOUNDATIONS MUST HAVE CONES OR BARRELS BOLTED TO FOUNDATION BASES UNTIL ACTUAL POLE IS INSTALLED.
- WHEN PLACING TRAFFIC SIGNAL HANDHOLES OR CONDUIT IN EXISTING PORTLAND CEMENT CONCRETE SIDEWALKS, THE ENTIRE SIDEWALK SQUARE OF CONCRETE SHALL BE REPLACED IN ACCORDANCE WITH R.I. STD. 43.1.0. NO PATCHES WILL BE ALLOWED.
- ALL PEDESTRIAN PUSHBUTTONS SHALL BE COMPLIANT WITH "THE AMERICANS WITH DISABILITIES ACT ACCESSIBILITY GUIDELINES FOR BUILDINGS AND FACILITIES" (ADAAG) AND SHALL INCLUDE A PRESSURE-ACTIVATED (NON-MOVING) BUTTON. SIGNS APPLICABLE TO PUSHBUTTON ACTUATION SHALL BE INSTALLED SUCH THAT THE CROSSING ASSIGNED TO EACH BUTTON IS CLEARLY INDICATED. IF SITE CONDITIONS DO NOT ALLOW PEDESTRIAN PUSHBUTTONS TO BE INSTALLED WHERE CALLED FOR ON THE PLANS, THE R.I.D.O.T. TRAFFIC ENGINEERING UNIT SHALL BE CONSULTED WITH THROUGH AN R.F.I. PRIOR TO INSTALLING THE PUSHBUTTONS. THE FINAL PLACEMENT OF ALL PEDESTRIAN PUSHBUTTONS SHALL BE IN ACCORDANCE WITH ADAAG AND THE MANUAL ON UNIFORM TRAFFIC CONTROL DEVICES, LATEST EDITION.
- ALL LOOP DETECTORS SHALL BE CENTERED WITHIN EACH LANE AS DELINEATED, UNLESS OTHERWISE DIMENSIONED ON PLANS.
- ALL LOOP DETECTORS SHALL BE CUT INTO THE FINAL PAVEMENT SURFACE COURSE.
- TRAFFIC SIGNAL CONTROLLERS SHALL BE WIRED SO THAT ANY FIRE PRE-EMPTION SHALL OVERRIDE MANUAL (PUSH BUTTON) OPERATION.
- THE CONTRACTOR SHALL WORK CONTINUOUSLY TO RESTORE TRAFFIC SIGNAL OPERATION TO ITS INTENDED PURPOSE WHEN REPLACING THE TRAFFIC SIGNAL EQUIPMENT. A POLICE DETAIL IS REQUIRED TO DIRECT TRAFFIC AT THE INTERSECTION AT ALL TIMES WHEN THE TRAFFIC SIGNAL IS INOPERATIVE. AT NO TIME SHALL THE CONTRACTOR LEAVE THE SITE BEFORE RESTORING FULL TRAFFIC OPERATIONS.

**MAINTENANCE AND PROTECTION OF TRAFFIC NOTES:**

- ALL MAINTENANCE AND PROTECTION OF TRAFFIC CONTROL SETUPS, SIGNS, CHANNELIZING DEVICES, ETC., SHALL BE IN ACCORDANCE WITH THE MANUAL ON UNIFORM TRAFFIC CONTROL DEVICES, LATEST EDITION.
- ALL SIGN MOUNTINGS FOR TEMPORARY AND CONSTRUCTION SIGNS SHALL BE IN ACCORDANCE WITH THE R.I.D.O.T. STANDARD SPECIFICATIONS, LATEST EDITION.
- THE CONTRACTOR SHALL COVER ALL EXISTING AND/OR TEMPORARY SIGNS THAT ARE NOT RELEVANT TO THE TRAFFIC CONTROL REQUIRED DURING ANY PARTICULAR STAGE OF THE CONTRACT.
- ADVANCE FLAGPERSON SIGNS (W20-7A) SHALL BE USED IN ADVANCE OF ANY POINT AT WHICH A FLAGPERSON OR A POLICE OFFICER HAS BEEN STATIONED TO CONTROL TRAFFIC. WHEN NEEDED, AN APPROPRIATE DISTANCE MESSAGE MAY BE DISPLAYED ON A SUPPLEMENTAL PLATE (24"x18") BELOW THE FLAGPERSON SYMBOL SIGN. THE SIGN SHALL BE PROMPTLY REMOVED OR COVERED WHENEVER THE FLAGPERSON IS NOT AT THE STATION.
- POLICE OFFICERS (AND NOT FLAGPERSONS) SHALL BE UTILIZED WHEN WORK WILL IMPACT SIGNALIZED INTERSECTIONS AND LIMITED ACCESS HIGHWAYS.
- POLYETHYLENE DRUMS SHALL BE UTILIZED AS A CHANNELIZING DEVICE WHEN A TRAFFIC CONTROL SET-UP IS TO REMAIN BEYOND WORKING HOURS WHEN NO WORKERS ARE PRESENT. CONES SHALL BE UTILIZED WHEN A TRAFFIC CONTROL SET-UP IS TO REMAIN ONLY DURING WORKING HOURS AND IS SUBSEQUENTLY BROKEN DOWN AT THE END OF THE WORKDAY.
- ARROW PANELS SHALL BE SET IN THE FLASHING FOUR CORNERS CAUTION MODE UNLESS UTILIZED FOR A MERGING TAPER. ARROW PANELS SET IN THE FLASHING ARROW MODE SHALL NOT BE UTILIZED FOR LANE SHIFTS.
- TEMPORARY CONSTRUCTION SIGNS AND OTHER WORKZONE TRAFFIC CONTROL DEVICES THAT ARE DAMAGED OR REQUIRE RELOCATION SHALL BE REPLACED AND / OR RELOCATED UNDER THE PAY ITEM FOR "MAINTENANCE AND MOVEMENT TRAFFIC PROTECTION."
- THE PRIVATE VEHICLES OF CONSTRUCTION WORKERS SHALL NOT BE PARKED ON THE TRAVEL LANES OR SHOULDERS. THEY MAY BE PARKED WITHIN THE STATE RIGHT-OF-WAY ONLY IN AREAS 30' BEYOND THE OUTSIDE EDGE OF THE TRAVEL LANES AND/OR IN AREAS APPROVED BY THE ENGINEER.
- TEMPORARY CONSTRUCTION SIGNS AND OTHER TEMPORARY TRAFFIC CONTROL DEVICES SHALL BE INSTALLED PRIOR TO THE START OF WORK IN ANY AREA OPEN TO TRAFFIC, AND SHALL BE REMOVED AS SOON AS PRACTICAL WHEN THEY ARE NO LONGER APPROPRIATE.
- THE INTENDED VEHICLE PATHS THROUGH EACH WORK ZONE SHALL BE CLEARLY MARKED AT ALL TIMES. WATERBORNE PAVEMENT MARKINGS SHALL BE INSTALLED BEFORE THE END OF THE WORK SHIFT ON ALL COLD-PLANED AND NEW ROADWAY SURFACES THAT WILL BE OPENED TO TRAFFIC AT THE END OF THE SHIFT.

Kindly be advised that this Permit is not equivalent to a verification of the type or extent of freshwater wetlands on site.



DEPARTMENT OF ENVIRONMENTAL MANAGEMENT  
OFFICE OF WATER RESOURCES  
FRESHWATER WETLANDS PROGRAM  
REVIEWED SITE PLAN APPLICATION NO.: 16-0298  
DATED FEB 17 2017  
SEE LETTER OF SAME DATE.

*Signature of official*

**THIS PLAN SHALL NOT BE ALTERED**

REVISIONS			RHODE ISLAND DEPARTMENT OF TRANSPORTATION
NO.	DATE	BY	
1	4/07	TRB	INTERSECTION SAFETY IMPROVEMENTS TO ROUTE 108 AND CURTIS CORNER ROAD SOUTH KINGSTOWN RHODE ISLAND
2	11/07	TRB	
3	3/10	RBH	
4	11/16	GM2	
			STANDARD NOTES - 2
CHECKED BY _____ DATE _____ SCALE NO SCALE			

**GM2 ASSOCIATES, Inc.**  
Consulting Engineers  
115 Glastonbury Boulevard  
Glastonbury, CT 06033



















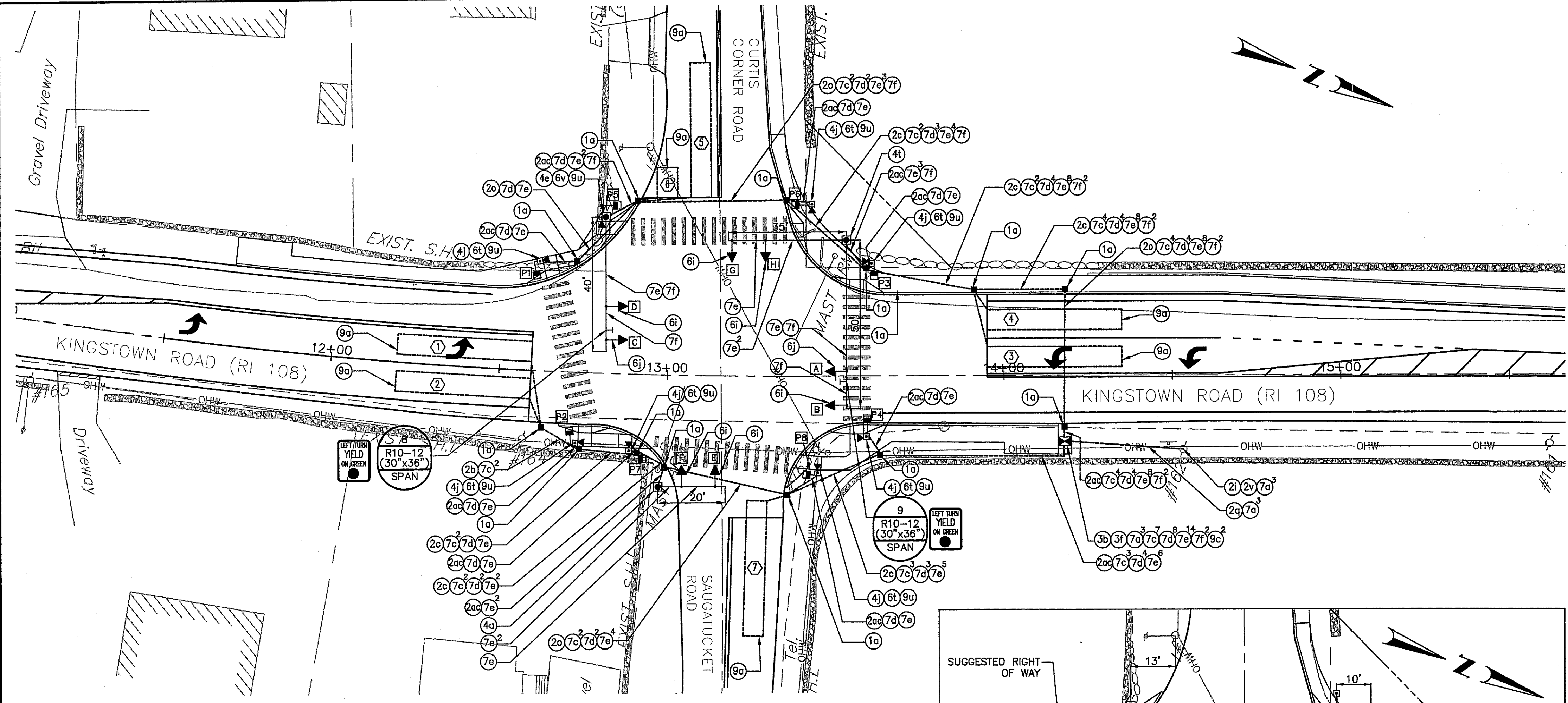








FED. ROAD DIV. NO.	STATE	FEDERAL AID PROJECT NO.	FISCAL YEAR	SHEET NO.	TOTAL SHEETS
1	RI	STP-0202(102)	2017	18	26



**TRAFFIC SIGNAL EQUIPMENT LEGEND**

NO.	LEGEND	DESCRIPTION
10	■	PRECAST TYPE "A" HANDHOLE STD. 18.2.0
2b	—	2 INCH POLYVINYL CHLORIDE PLASTIC CONDUIT (SCHEDULE 40) - UNDERGROUND
2c	—	3 INCH POLYVINYL CHLORIDE PLASTIC CONDUIT (SCHEDULE 40) - UNDERGROUND
2i	—	2 INCH POLYVINYL CHLORIDE PLASTIC CONDUIT - OVERHEAD
2o	—	3 INCH POLYVINYL CHLORIDE PLASTIC CONDUIT (SCHEDULE 80) - UNDER EXISTING PAVEMENT
2a	—	2 INCH RIGID STEEL CONDUIT - UNDERGROUND
2v	—	2 INCH RIGID STEEL CONDUIT - OVERHEAD
2oc	—	3 INCH RIGID STEEL CONDUIT - UNDERGROUND
3b	■	ACTUATED CONTROLLER TS-2, TYPE 1 W/ 8 PHASE ASSEMBLY GROUND MOUNTED INCLUDING FOUNDATION AND CABINET STD. 19.1.0
3f	■	METER SOCKET WITH MANUAL BY-PASS
4a	■	20 FOOT GAL STEEL MAST ARM TRAFFIC SIGNAL POST AND FOUNDATION STD 19.2.0
4e	■	40 FOOT GAL STEEL MAST ARM TRAFFIC SIGNAL POST AND FOUNDATION STD 19.2.0
4j	■	TRAFFIC SIGNAL STANDARD, 8 FOOT, ALUMINUM PEDESTAL POLE AND FOUNDATION STD 19.4.0
4t	■	35'x50' DUAL MAST ARM TRAFFIC SIGNAL POST AND FOUNDATION STD 19.2.0
6i	→	1 WAY, 3 SECTION SPAN MAST ARM MOUNTED SIGNAL HEAD 12 INCH
6j	→	1 WAY, 4 SECTION MAST ARM MOUNTED SIGNAL HEAD 12 INCH (W/ DUAL IND. DUAL ROW L.E.D. ARROW)
6t	■	1 WAY PEDESTAL MOUNTED COUNTDOWN L.E.D. PEDESTRIAN SIGNAL HEAD, 12 INCH
6v	■	1 WAY BRACKET MOUNTED COUNTDOWN L.E.D. PEDESTRIAN SIGNAL HEAD, 12 INCH
7a	—	6 AWG SINGLE CONDUCTOR CABLE 600V INSULATION
7b	—	14 AWG 2 CONDUCTOR TWISTED SHIELDED CABLE
7c	—	14 AWG 3 CONDUCTOR CABLE
7e	—	14 AWG 5 CONDUCTOR CABLE
7f	—	14 AWG 7 CONDUCTOR CABLE
9a	—	TRAFFIC DETECTOR - LOOP STANDARD 19.6.0
9c	—	TRAFFIC DETECTOR RELAY - LOOP 4 CHANNEL
9u	▶	ACCESSIBLE PEDESTRIAN DETECTION SYSTEM

Kindly be advised that this permit is not equivalent to a certification of the type or extent of freshwater wetlands on site.

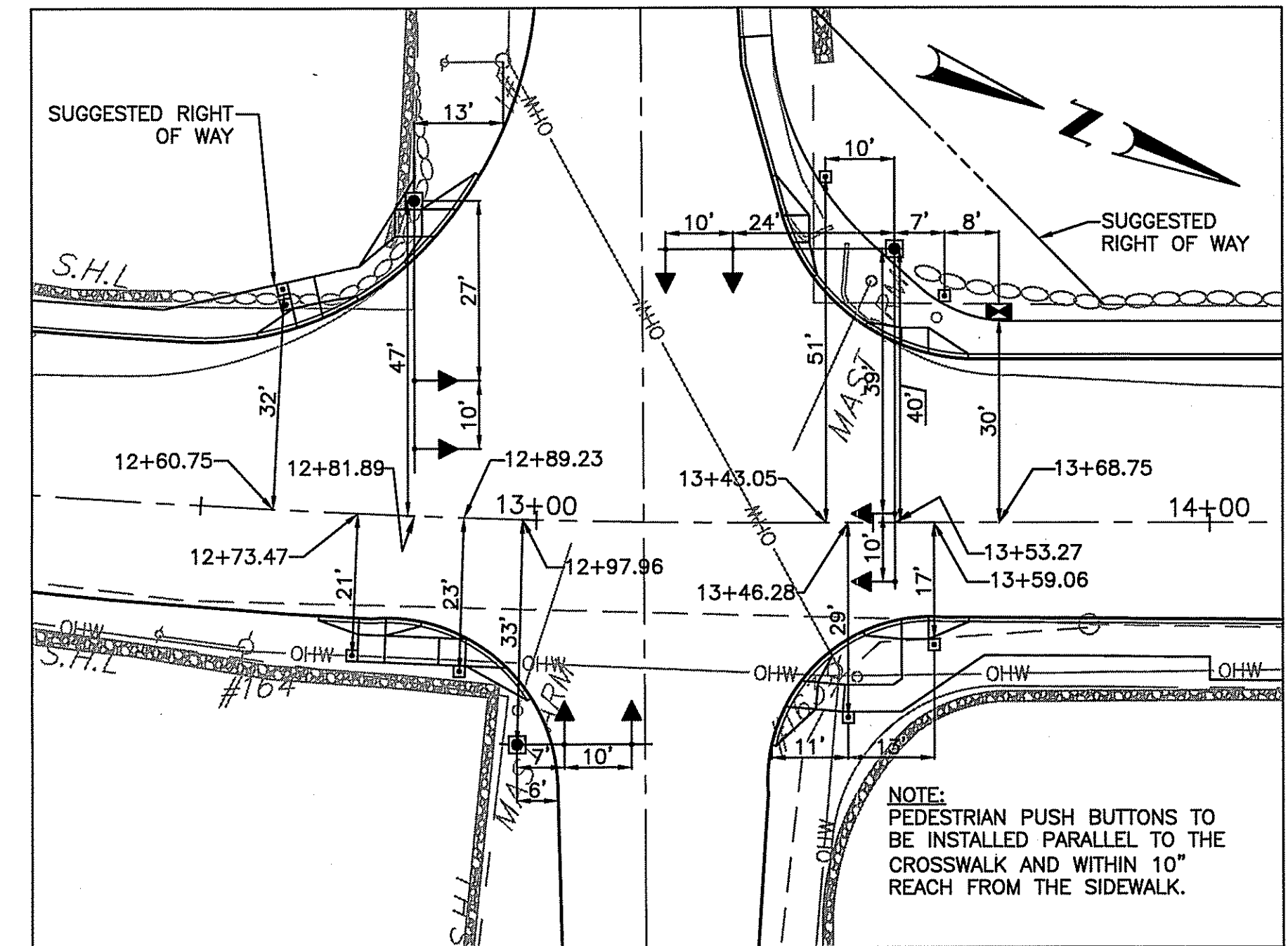
DEPARTMENT OF ENVIRONMENTAL MANAGEMENT  
OFFICE OF WATER RESOURCES  
FRESHWATER WETLANDS PROGRAM  
REVIEWED SITE PLAN APPLICATION NO. 16-0298  
DATED FEB 17 2017  
LETTER OF SAME DATE.

**REMOVE AND DISPOSE TRAFFIC SIGNAL EQUIPMENT**

**REMOVE AND SALVAGE TRAFFIC SIGNAL EQUIPMENT**

QUANTITY	ITEM DESCRIPTION
1	CONTROLLER AND CABINET
8	TRAFFIC SIGNAL HEAD W/ ASSEMBLY

QUANTITY	ITEM DESCRIPTION
2	MAST ARM
2	MAST ARM FOUNDATIONS
1	CONTROLLER FOUNDATION
4	HANDHOLE
1200 LF	SIGNAL CABLE



**POLE LOCATION DIAGRAM**

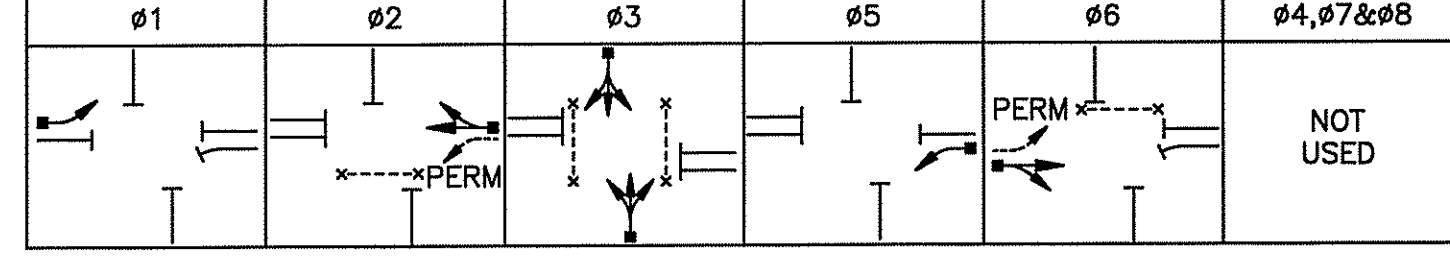
NOTE: PEDESTRIAN PUSH BUTTONS TO BE INSTALLED PARALLEL TO THE CROSSWALK AND WITHIN 10" REACH FROM THE SIDEWALK.

- NOTES:**
- ALL TRAFFIC AND PEDESTRIAN SIGNAL HEADS ARE PROPOSED.
  - ALL RED, YELLOW AND GREEN SIGNAL DISPLAYS SHALL BE EQUIPPED WITH LED MODULES.
  - ARROW DISPLAYS SHALL BE MADE UP OF TWO ROWS OF LED MODULES.
  - THE HAND AND MAN IN THE PEDESTRIAN SIGNAL HEAD SHOULD BE FILLED IN, AND NOT JUST AN OUTLINE.
  - ALL TRAFFIC SIGNAL EQUIPMENT TO BE PAINTED BLACK.

**SEQUENCE AND TIMING DIAGRAM**

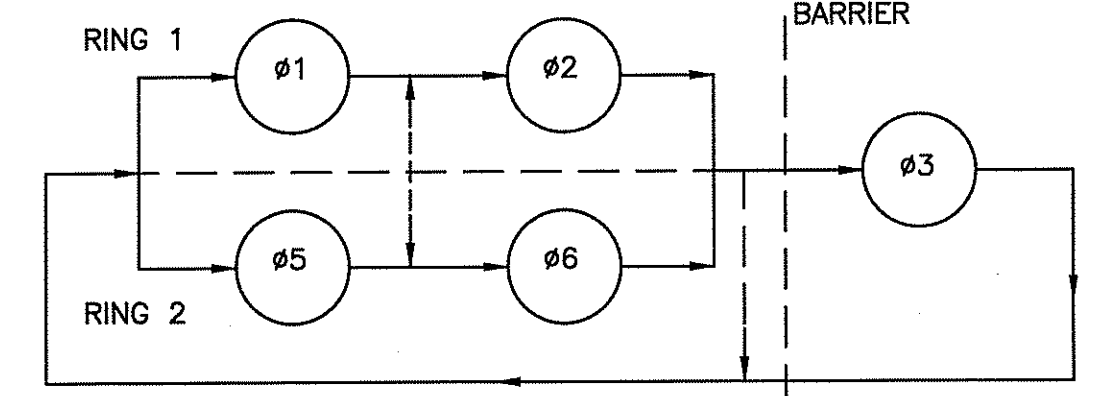
APPROACH	DIRECTION	HOUSING	Ø1	Ø2	Ø3	Ø5	Ø6	FLASHING OPERATION
MINIMUM INTERVAL			6	10		8	6	10
VEHICLE EXTENSION			2.4	2.7		2.7	2.4	2.7
MAXIMUM 1			15	41		25	15	41
MAXIMUM 2			15	51		25	15	51
YELLOW CLEARANCE			3.5	3.5		3.5	3.5	3.5
RED CLEARANCE			1.0	1.0		1.0	1.0	1.0
PED. WALK/CLEARANCE				7/15		7/12		7/13
KINGSTOWN ROAD NB-LT	A	R	R	R	R	R	R	R
KINGSTOWN ROAD NB	B	R	R	R	R	R	R	R
KINGSTOWN ROAD SB-LT	C	R	R	R	R	R	R	R
KINGSTOWN ROAD SB	D	R	R	R	R	R	R	R
CURTIS CORNER ROAD EB	E, F	R	R	R	R	R	R	R
SAUGATUCKET ROAD WB	G, H	R	R	R	R	R	R	R
PED. CROSSING KINGSTOWN ROAD	E-W	P1-P4	DW	DW	DW	DW	DW	DW
PED. CROSSING CURTIS CORNER RD.	N-S	P5-P6	DW	DW	DW	DW	DW	DW
PED. CROSSING SAUGATUCKET RD.	N-S	P7-P8	DW	DW	DW	DW	DW	DW
DETECTOR			NON-LOCK	NON-LOCK	NON-LOCK	NON-LOCK	NON-LOCK	
RECALL			OFF	MINIMUM-ON	OFF	OFF	MINIMUM-ON	

- SEQUENCE AND TIMING NOTES:**
- FLASHING OPERATION PER M.U.T.C.D. SECTION 4D.28.
  - PERM = PERMISSIVE
  - MAXIMUM 1 = ALL OTHER TIMES
  - MAXIMUM 2 = M-F 15:00-18:00
  - PED W/FDW UPON PUSH BUTTON ACTUATION ONLY



**GENERAL NOTES:**

- SEE SHEETS "STANDARD NOTES" AND "JOB SPECIFIC NOTES AND LEGEND" FOR ADDITIONAL NOTES.
- SEE PLAN "SIGNING & STRIPING" FOR SIGNING & PAVEMENT MARKING DETAILS.
- CABINET DOOR TO OPEN AWAY FROM STREET.
- THE CONTRACTOR IS TO LOCATE AND PROTECT THE COMMUNICATIONS CABLE TO THE POLICE STATION PRIOR TO ANY EXCAVATIONS FOR SIGNAL FOUNDATIONS, HANDHOLES OR CONDUITS.



**PHASE SEQUENCE DIAGRAM**

**DETECTOR DATA**

DETECTOR NO.	SIZE	RELAY NUMBER	SLOT	DELAY (SEC)	CALL PHASE	MODE	REMARKS
1	6'x40'	1	2	3	1	PRESENCE	PROPOSED
2	6'x40'	1	2	3	6	PRESENCE	PROPOSED
3	6'x40'	1	2	3	5	PRESENCE	PROPOSED
4	6'x40'	1	2	3	2	PRESENCE	PROPOSED
5	6'x40'	2	4	3	3	PRESENCE	PROPOSED
6	6'x9'	2	4	5	3	PRESENCE	PROPOSED
7	6'x40'	2	4	3	3	PRESENCE	PROPOSED

**SIGNAL HEAD DATA**

A,C	B,D,E,F,G,H	P1-P8
R	R	MAN
Y	Y	
G	G	
Y/G		

**GM2 Associates, Inc.**  
Consulting Engineers  
115 Glastonbury Boulevard  
Glastonbury, CT 06033

**RHODE ISLAND DEPARTMENT OF TRANSPORTATION**

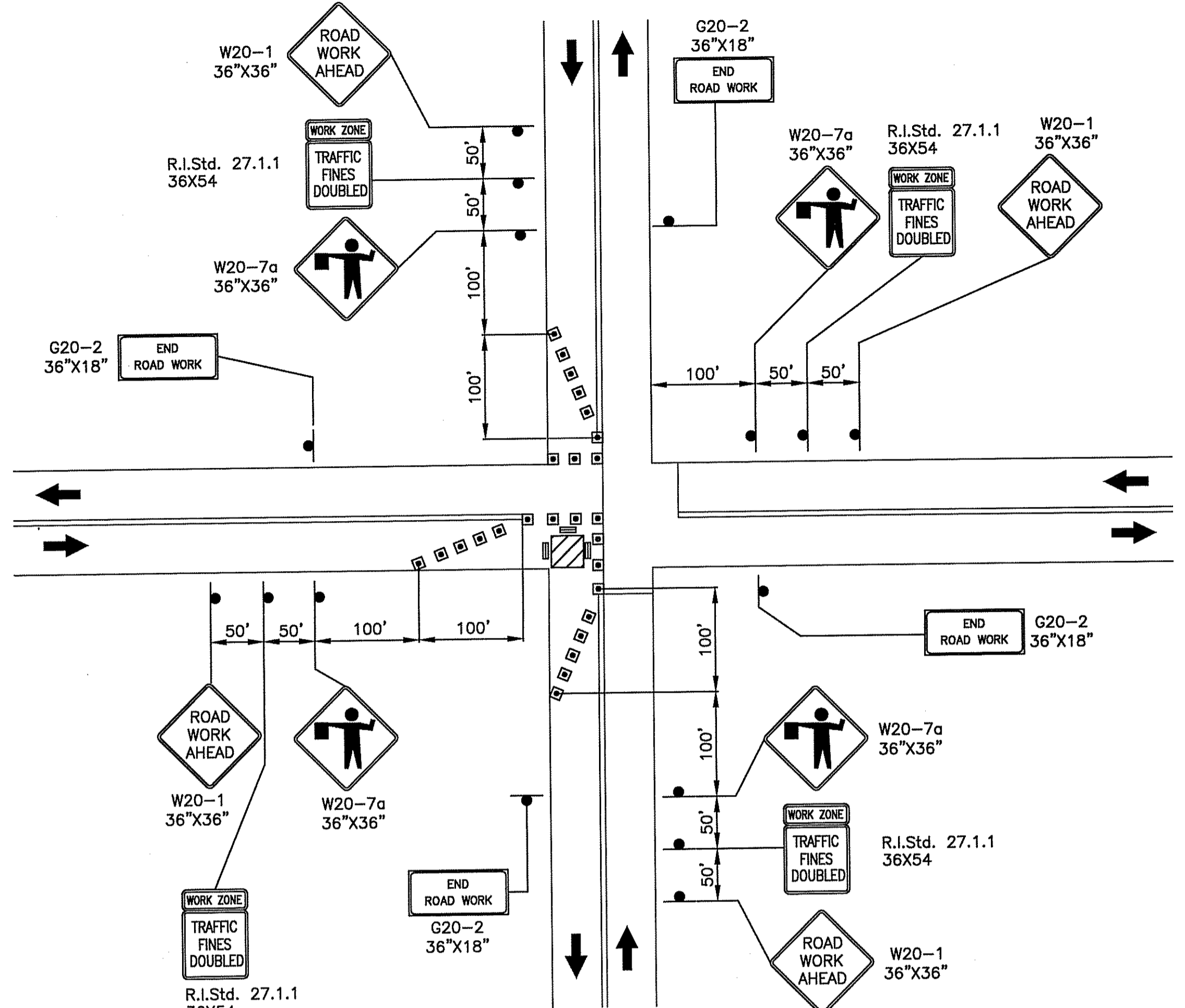
**INTERSECTION SAFETY IMPROVEMENTS TO ROUTE 108 AND CURTIS CORNER ROAD SOUTH KINGSTOWN RHODE ISLAND**

**TRAFFIC SIGNAL PLAN**  
RI 108 (KINGSTOWN RD.) AT CURTIS CORNER ROAD AND SAUGATUCKET ROAD

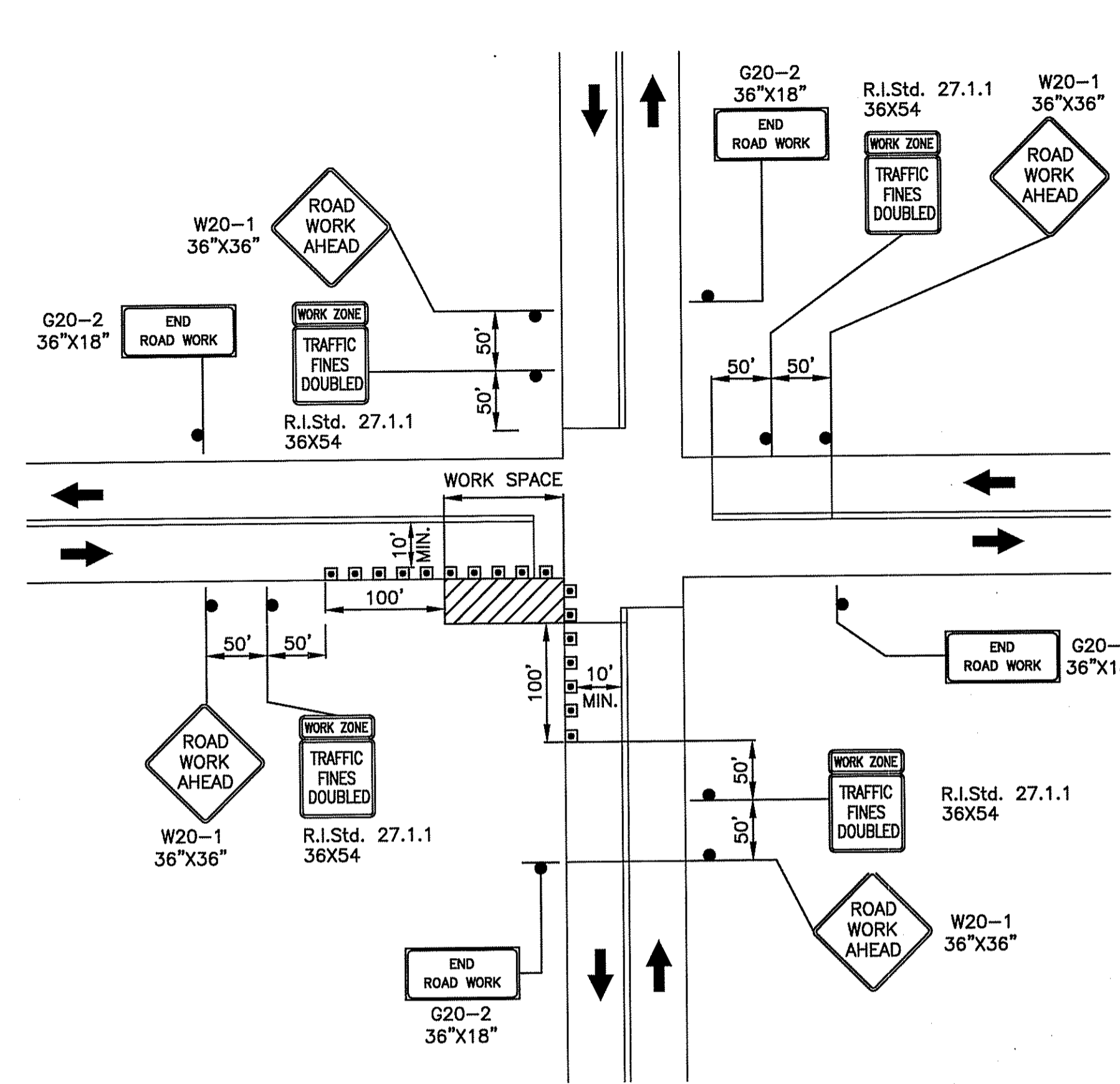
CHECKED BY SJ/VAA DATE NOV. 2016 SCALE 1"=20'



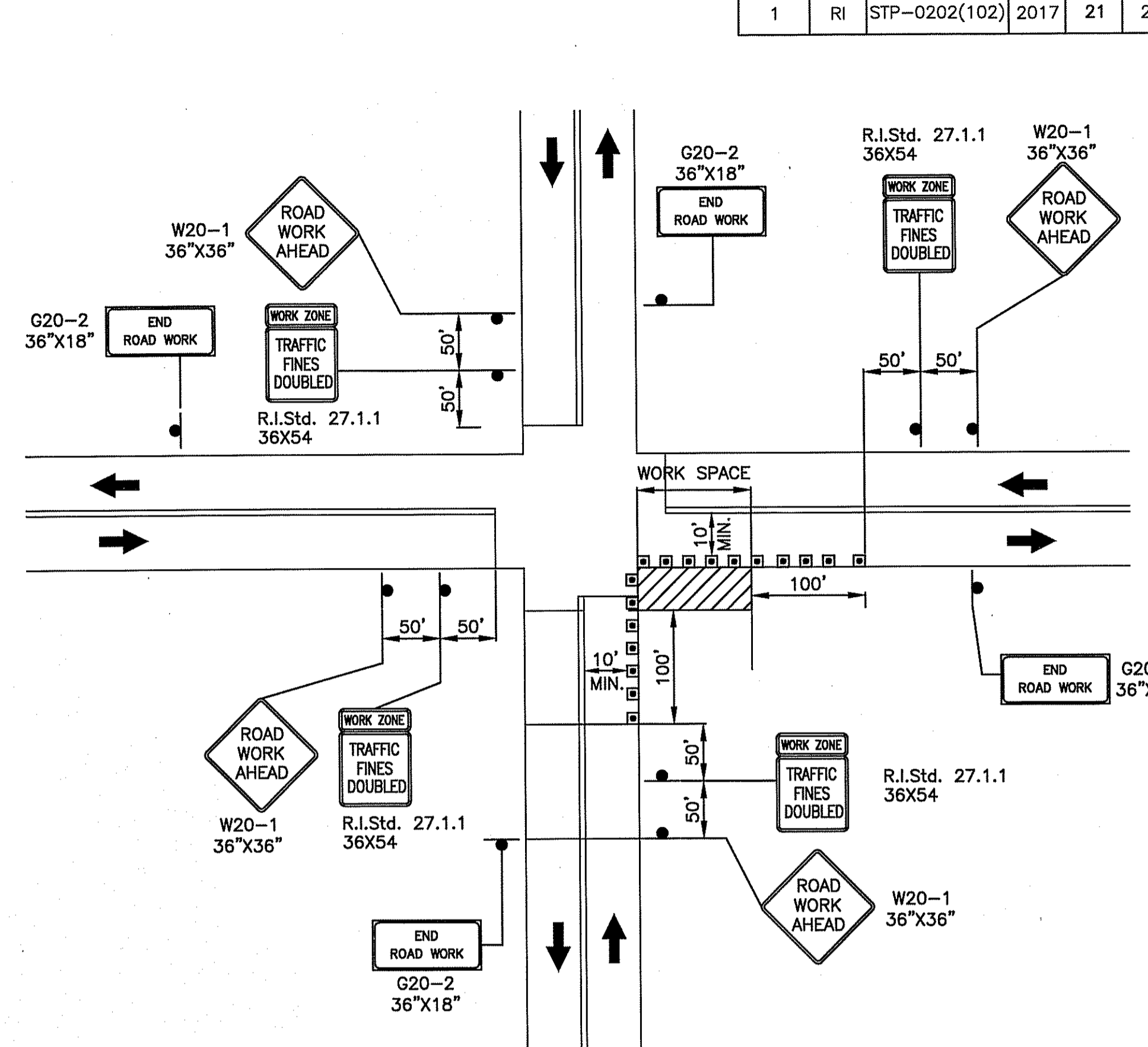




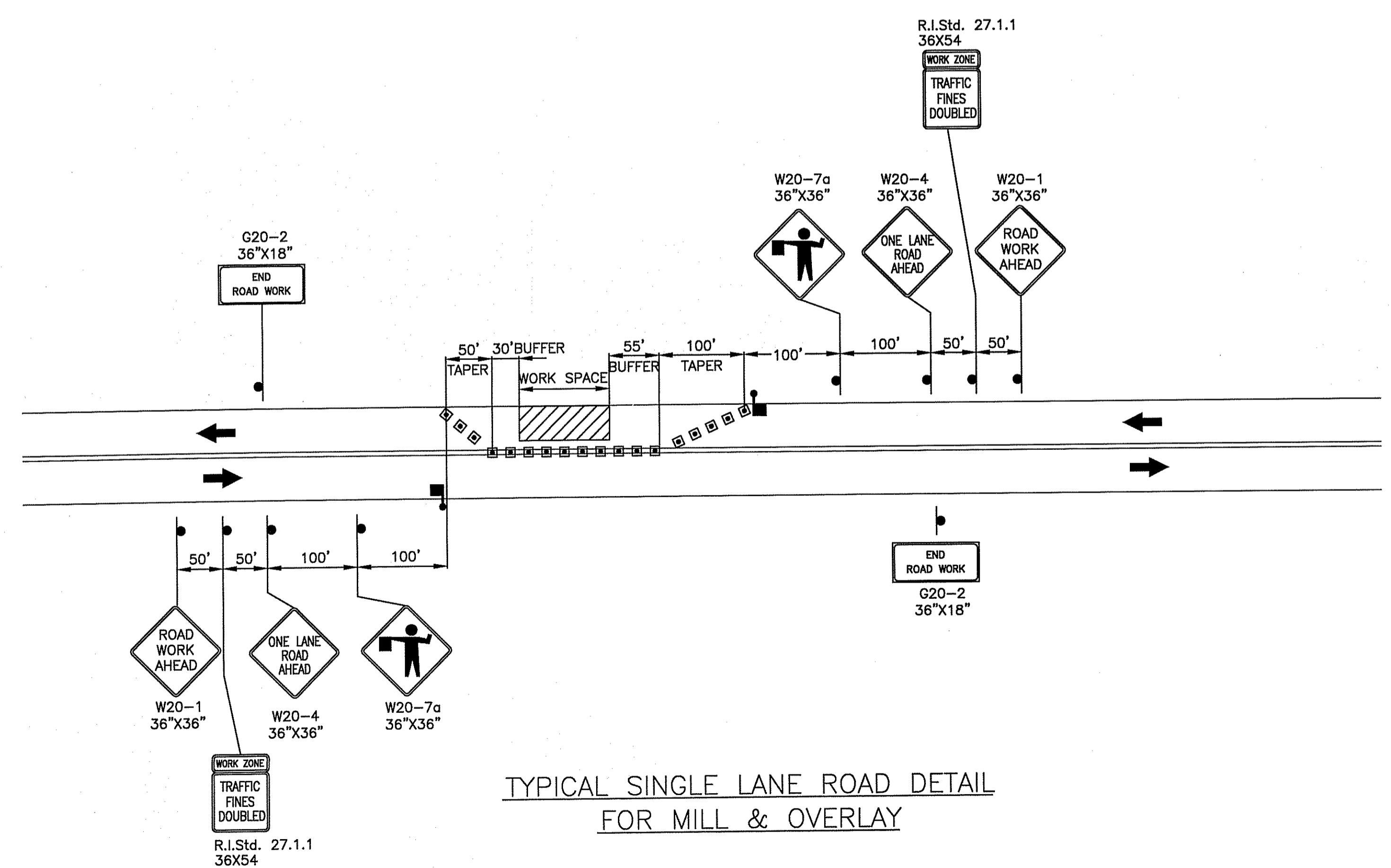
TYPICAL CLOSURE AT SIDE OF INTERSECTION



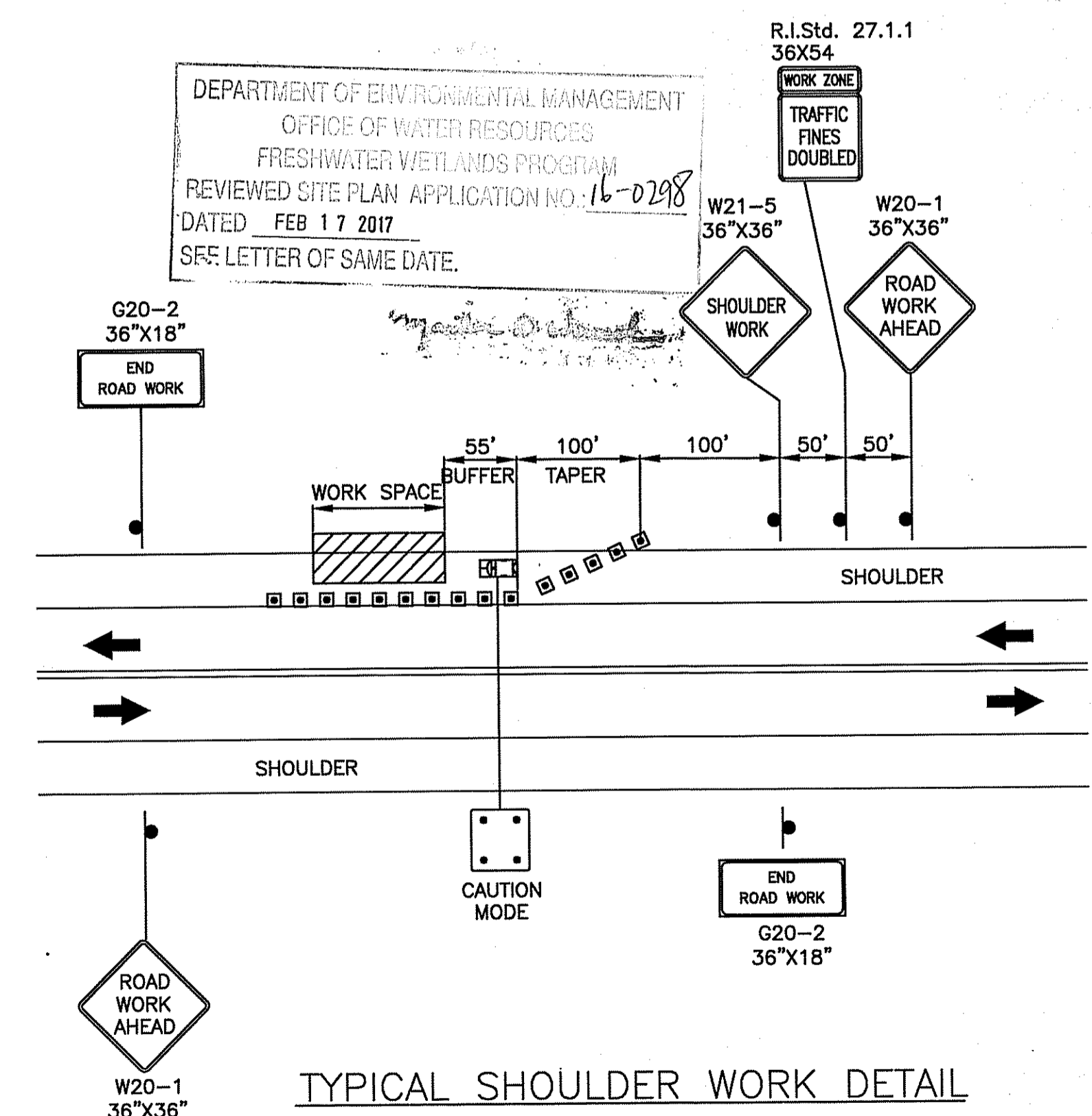
TYPICAL DETAIL - WORK BEYOND SHOULDER ON NEAR SIDE OF INTERSECTION



TYPICAL DETAIL - WORK BEYOND SHOULDER ON FAR SIDE OF INTERSECTION



TYPICAL SINGLE LANE ROAD DETAIL FOR MILL & OVERLAY



TYPICAL SHOULDER WORK DETAIL

DEPARTMENT OF ENVIRONMENTAL MANAGEMENT  
OFFICE OF WATER RESOURCES  
FRESHWATER WETLANDS PROGRAM  
REVIEWED SITE PLAN APPLICATION NO. 16-0298  
DATED FEB 17 2017  
SEE LETTER OF SAME DATE.

Jan 17 2017  
Curtis Corner Road

LEGEND

- TYPE III BARRICADE
- TRAFFIC CONE R.I. STD. 26.1.0
- ➔ DIRECTION OF TRAVEL
- SIGN
- ➔ TRUCK WITH ARROW & ATTENUATOR
- ▨ WORK AREA

Kindly be advised that this Permit is not equivalent to a verification of the type or extent of freshwater wetlands on site.

NOTES:

- POLICE OFFICERS (AND NOT FLAGPERSONS) SHALL BE UTILIZED FOR TRAFFIC CONTROL AT THIS INTERSECTION WHEN USING DETAILS WITH TRAFFIC PERSON.
- FLAGGERS MAY BE USED AWAY FROM SIGNALIZED INTERSECTION.

REVISIONS		RHODE ISLAND DEPARTMENT OF TRANSPORTATION	
DATE		INTERSECTION SAFETY IMPROVEMENTS TO ROUTE 108 AND CURTIS CORNER ROAD SOUTH KINGSTOWN RHODE ISLAND	
		MAINTENANCE AND PROTECTION OF TRAFFIC PLAN ROUTE 108 AT CURTIS CORNER RD.	
		CHECKED BY	SJ/VAA DATE NOV. 2016 SCALE NO. SCALE.

**GM2 ASSOCIATES**  
GM2 Associates, Inc.  
Consulting Engineers  
115 Glastonbury Boulevard  
Glastonbury, CT 06033









