

REVISIONS	MADE	CHKD	INSP	REV'D	APVD	REV DATE	DESCRIPTION
1							
2							
3							
4							



- Legend:**
- PROPOSED DECIDUOUS TREE
  - PROPOSED EVERGREEN TREE
  - PROPOSED SHRUB
  - EXISTING TREE
  - LOAM + RESTORATION SEED MIX
  - DAFFODILS

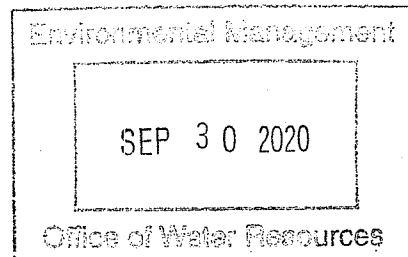
**Restoration Planting Schedule**

Plant Hardiness Zone 6b

Key	Qty	Botanical Name	Common Name	Install Size	Remarks / Mature Height
<b>Trees (B&amp;B Trees Unless Otherwise Noted)</b>					
AL	3	<i>Amelanchier canadensis</i>	Serviceberry	5-6ft. Multi-stem	Native, Wildlife Food, Early Summer, 15-20ft.
BP	4	<i>Betula papyrifera</i>	Paper Birch	8-10ft. Multi-stem	Native, Pioneer Species, 50ft.
PP	3	<i>Picea pungens 'Baker'</i>	Baker Blue Spruce	5-6ft.	Native, 15ft.
QP	3	<i>Quercus palustris</i>	Pin Oak	2-2.5" Caliper	Native, Wildlife Food, 50ft.
<b>Shrubs &amp; Bulbs</b>					
AA	27	<i>Aronia arbutifolia</i>	Red Chokeberry	#2 Pot	Native, Tolerant of Soils, Wildlife Food, Early Summer, 8ft.
AM	21	<i>Aronia melanocarpa</i>	Black Chokeberry	#2 Pot	Native, Tolerates Flooding, Wildlife Food, Spring, 8ft.
CA	26	<i>Clethra alnifolia</i>	Summersweet	#2 Pot	Native, Mid-summer, 8ft.
IG	30	<i>Ilex glabra</i>	Inkberry	#2 Pot	Native, Evergreen, Late-Early Summer, Habitat, 6ft.
IV	36	<i>Ilex verticillata</i>	Winterberry	#2 Pot	Native, Late Spring-Mid Summer, Fruit Fall, 6ft.
LB	21	<i>Lindera benzoin</i>	Northern Spicebush	#2 Pot	Native, Early Spring, 12ft.
RC	19	<i>Rosa carolina</i>	Carolina Rose	#2 Pot	Native, Late Spring-Mid Summer, Food, 8ft.
RV	17	<i>Rosa virginiana</i>	Virginia Rose	#2 Pot	Native, Habitat, Early-Late Summer, 5ft.
SD	15	<i>Sambucus canadensis</i>	Elderberry	#2 Pot	Native, Habitat, Food, Early-Late Summer, 12ft.
SS	7	<i>Salix sericea</i>	Silky Willow	#2 Pot	Native, Host Plant, Early-Mid Spring, 15ft.
VC	32	<i>Vaccinium corymbosum</i>	Highbush Blueberry	#2 Pot	Native, Flower + Fruit, Early-Late Spring, 5ft.
VB	23	<i>Viburnum dentatum</i>	Arrowwood Viburnum	#2 Pot	Native, Flower + Fruit, Late Spring-Early Summer, 8ft.
1250		<i>Narcissi - Naturalizing Mix</i>	Daffodils	Bulb	Native, Flower, 6in. O.C. in Irregular Pattern

**Restoration Seed Mix**

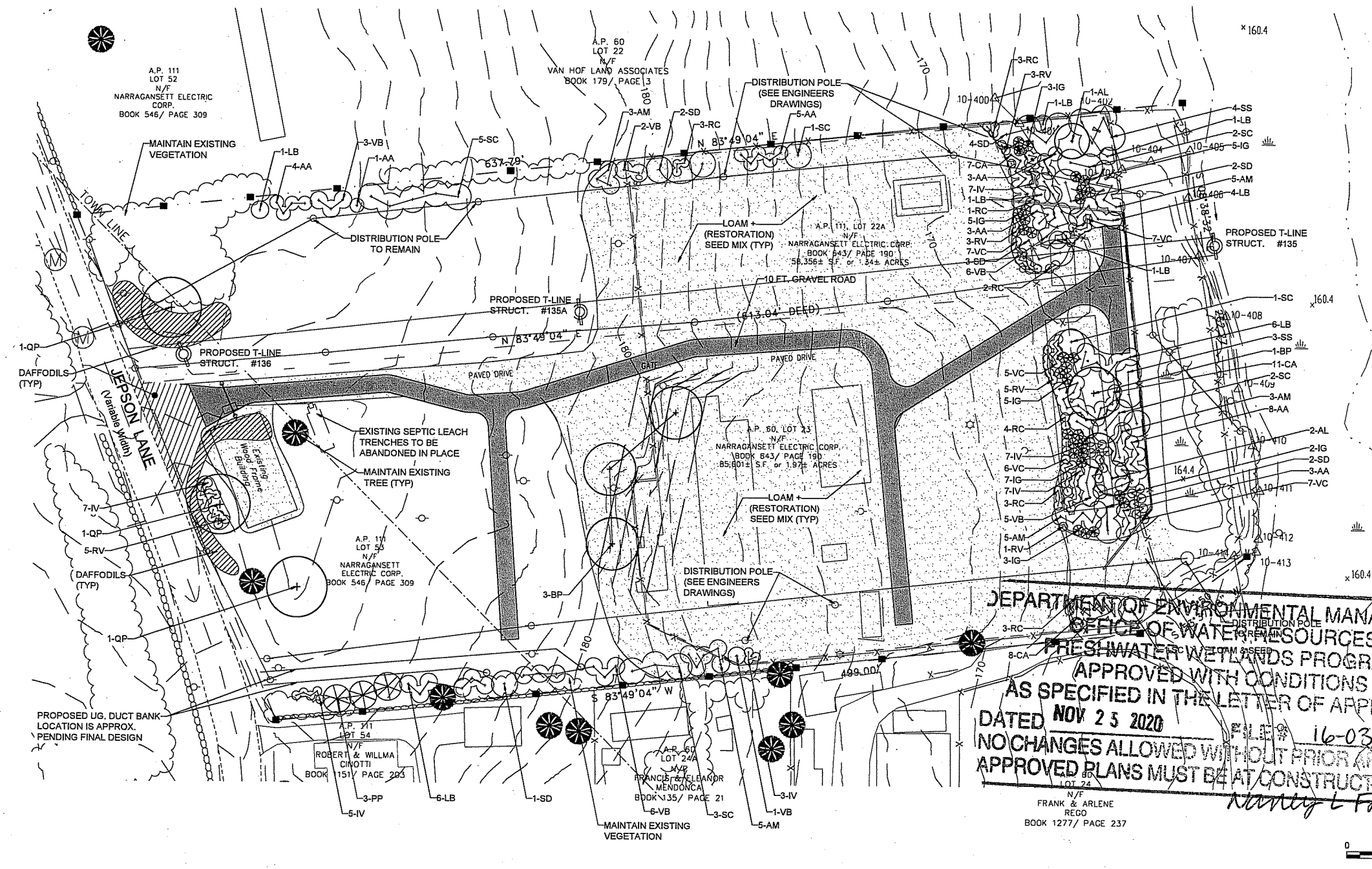
Botanical Name	Common Name	% of Mix	Bloom Time
<i>Zizia aurea</i>	Golden Alexanders	3.00%	Spring
<i>Lupinus perennis</i>	Wild Lupine	0.30%	Spring
<i>Baptisia australis</i>	Wild Blue Indigo	0.20%	Spring
<i>Penstemon digitalis</i>	Smooth Penstemon	10.00%	Early Summer
<i>Asclepias tuberosa</i>	Butterfly Milkweed	1.50%	Early Summer
<i>Agastache foeniculum</i>	Lavender Hyssop	8.00%	Summer
<i>Echinacea purpurea</i>	Purple Coneflower	15.00%	Summer
<i>Monarda fistulosa</i>	Wild Bergamot	15.00%	Summer
<i>Pyrenanthemum virginianum</i>	Virginia Mountain Mint	10.00%	Summer
<i>Mandard punctata</i>	Dotted Mint	15.00%	Summer
<i>Liatris spicata</i>	Marsh Blazingstar	0.50%	Late Summer
<i>Solidago speciosa</i>	Showy Goldenrod	3.00%	Fall
<i>Symphoricarichum novae-angliae</i>	New England Aster	5.00%	Fall
<i>Schizachyrium scoparium</i>	Little Bluestem	10.00%	Grass
<i>Andropogon gerardii</i>	Big Bluestem	5.00%	Grass
<i>Sorghastrum nutans</i>	Indian Grass	5.00%	Grass
		100%	



- Planting Notes for Seed Restoration Cover for Pollinators \***
- On all disturbed areas, apply a non-selective, no-persistent herbicide as per label as soon as weeks are actively growing in the early spring.
  - Repeat herbicide applications through the spring, summer and early fall, as needed (whenever emerging weed seedlings reach 4-6 in.
  - For any herbicide-resistant weeds, mow the area to prevent flowering and seed development, as necessary.
  - Plant pollinator seed mix (and any transplants) in the fall, waiting at least 72 hours after the last herbicide treatment.
  - Do not till. Avoid any ground disturbance that may bring up additional weed seed. Avoid use of herbicides that are bee-toxic (e.g., Paraquat and Gramoxone)
  - Remove as much stubble as possible prior to seeding, creating a smooth, lightly-packed seedbed. The soil surface can be lightly hand-raked or harrowed to break up crusted surfaces, but do not cultivate the site (cultivation will bring up additional weed seed).
  - Plant seed either with Broadcast (seeder or hand), Drop Seeder, or Native Seed Drills.
  - Do not cover the seed after plantings. A water-filled turf grass roller or a cultipacker should be used to press the seed into the soil surface. Natural precipitation or light overhead irrigation can also help ensure good seed-soil contact.
  - Newly planted areas should be clearly marked (with signs) to protect them from herbicides or other disturbances.
  - Weeds should be prevented from going to seed in the project area during the first 2 years of establishment. Weed management includes spot spraying and selective herbicides.
  - Keep irrigation to a minimum to help native wildflowers out-compete non-native species.
  - Mow occasionally during the first year with mower set to highest height level.
  - After establishment, no more than 30% of the area should be mowed in any one year to ensure sufficient undisturbed refuge areas for pollinators and other wildlife.

- Planting Notes for Hedgerow Planting for Pollinators \***
- On all disturbed areas, apply a non-selective, no-persistent herbicide as per label as soon as weeks are actively growing in the early spring.
  - Repeat herbicide applications through the spring, summer and early fall, as needed (whenever emerging weed seedlings reach 4-6 in.
  - For any herbicide-resistant weeds, mow the area to prevent flowering and seed development, as necessary.
  - Planting to be done in spring or fall, avoiding prolonged periods of hot, dry, or windy weather.
  - Holes should be spaced on a 4 ft. to 10 ft. on center.
  - Holes for plants should be dug and pre-irrigated, prior to planting, with follow up irrigation of 1 inch of water per week for first two years after planting. Irrigate at the base of plants.
  - Mulch is recommended to reduce weed competition and retain moisture. Shredded, aged, pine bark mulch to be used, or equal.
  - Newly planted areas should be clearly marked (with signs) to protect them from herbicides or other disturbances.
  - Weeds should be prevented from going to seed in the project area during the first 2 years of establishment. Weed management includes spot spraying and selective herbicides.

- \*Reference:**
- The Xerces Society for Invertebrate Conservation, Conservation Cover (327) for Pollinators: New England, Installation Guide and Job Sheet" October 2012
  - The Xerces Society for Invertebrate Conservation, Hedgerow Planting (422) for Pollinators: Rhode Island, Installation Guide" January 2017



DEPARTMENT OF ENVIRONMENTAL MANAGEMENT  
 OFFICE OF WATER RESOURCES  
 FRESHWATER WETLANDS PROGRAM  
 APPROVED WITH CONDITIONS  
 AS SPECIFIED IN THE LETTER OF APPROVAL  
 DATED NOV 25 2020  
 NO CHANGES ALLOWED WITHOUT PRIOR APPROVAL  
 APPROVED PLANS MUST BE AT CONSTRUCTION SITE

FILE # 16-0318  
 [Signature]

**AECOM**  
250 ARNOLD DRIVE  
 CHILMARK, MA 01923

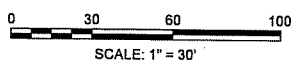
CONFIDENTIALITY STATEMENT  
This document contains confidential and proprietary information of the company(s) named in this title block, or its National Grid ("National Grid"). It is to be used by authorized contractors for National Grid solely in connection with the specific project for which it has been transmitted. Any other use, its transmission to third parties, or its reproduction without prior express written authorization of National Grid is strictly prohibited.

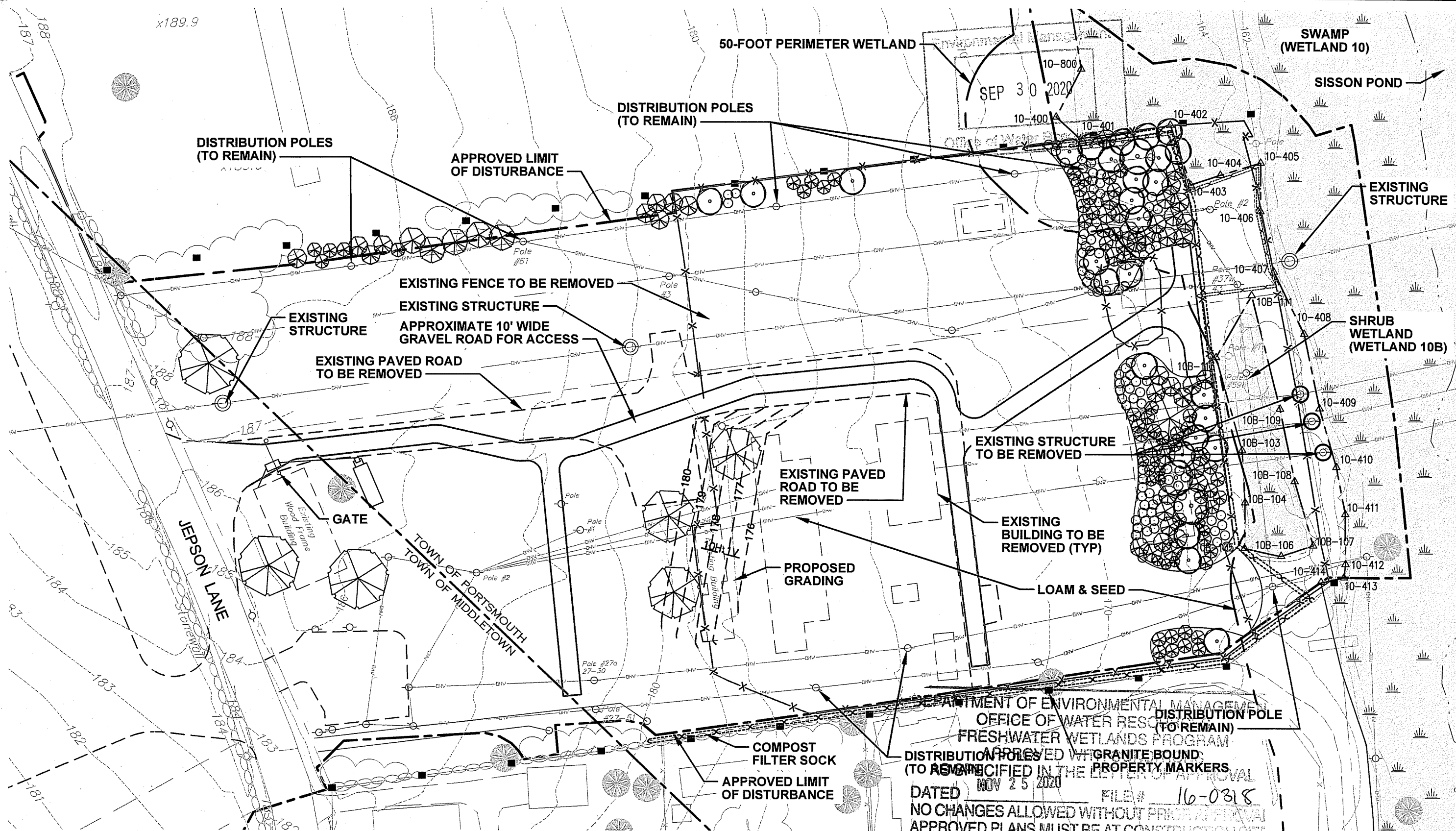
**nationalgrid**  
 NARRAGANSETT ELECTRIC COMPANY

JEPSON SUBSTATION NO. 37  
 PORTSMOUTH, RHODE ISLAND

SITE RESTORATION PLAN

SCALE 1" = 30'





DEPARTMENT OF ENVIRONMENTAL MANAGEMENT  
 OFFICE OF WATER RESOURCES  
 FRESHWATER WETLANDS PROGRAM  
 APPROVED WITH GRANITE BOUNDARY PROPERTY MARKERS  
 AS SPECIFIED IN THE LETTER OF APPROVAL  
 DATED NOV 25 2020 FILE# 16-0318  
 NO CHANGES ALLOWED WITHOUT PRIOR APPROVAL  
 APPROVED PLANS MUST BE AT CONSTRUCTION SITE

*Nancy Freeman*  
 vhb  
 Soil Erosion and Sediment Control Plan  
 Old Jepson Substation Demolition  
 Portsmouth/Middletown, RI

Figure 1



	EXISTING UTILITY POLE		EXISTING FENCE TO BE REMOVED
	EXISTING OVERHEAD WIRE		WETLAND AREA
	WETLAND EDGE		EXISTING BUILDING TO BE REMOVED
	50-FOOT PERIMETER WETLAND		PROPOSED LANDSCAPING (PLANT SPECIES AND LOCATIONS MAY BE FIELD ADJUSTED TO AVOID OVERHEAD WIRE CONFLICTS)
	COMPOST FILTER SOCK (CFS)		
	EXISTING PAVED ROAD TO BE REMOVED		
	APPROXIMATE GRAVEL ROAD FOR ACCESS		