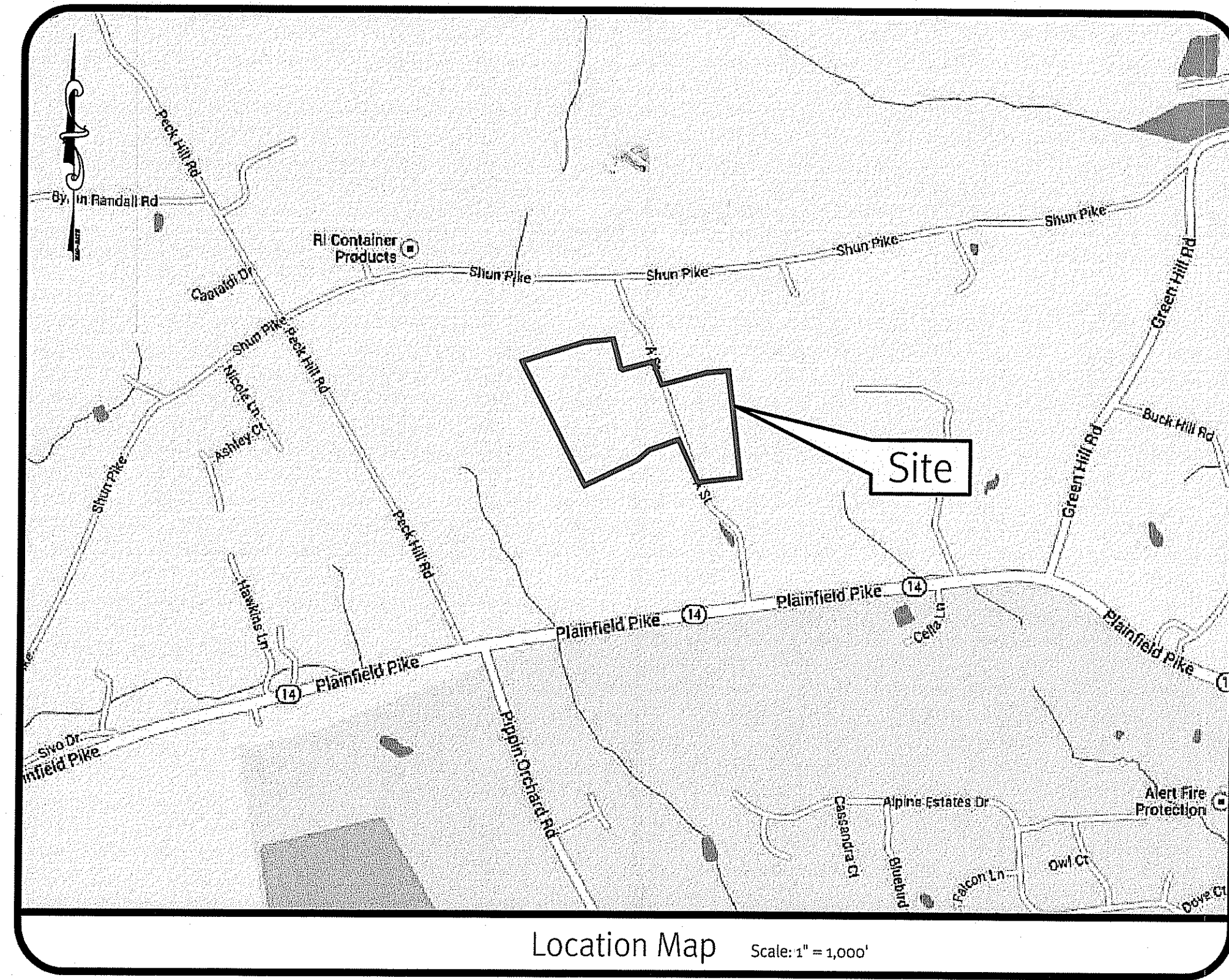
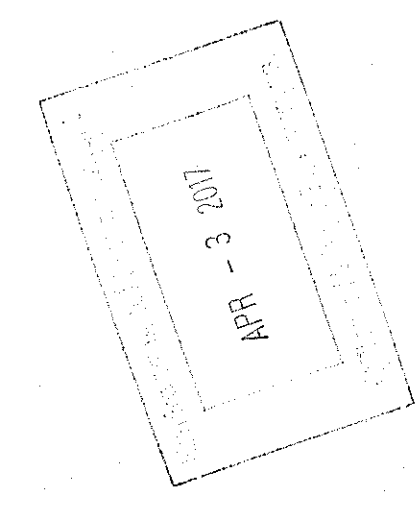


# RIDEM Preliminary Determination Submission

# SSRE RI - A Street

A Street  
Johnston, Rhode Island  
Assessor's Plat 32, Lot 32



## Sheet Index

1. Cover Sheet
2. 1/2 Mile Radius & USGS Map
3. Existing Conditions Plan
4. SESC & Grading Plan
5. Site Plan
6. Detail Sheet - 1
7. Detail Sheet - 2

*David A. Russo*  
 DEPARTMENT OF ENVIRONMENTAL MANAGEMENT  
 OFFICE OF WATER RESOURCES  
 FRESHWATER WETLANDS PROGRAM  
 APPROVED WITH CONDITIONS  
 RECORDED IN THE LETTER OF APPROVAL  
 MAY 5 2017 FILE # 16-0321  
 ANY CHANGES ALLOWED WITHOUT PRIOR APPROVAL  
 APPROVED PLANS MUST BE AT CONSTRUCTION SITE

**DIPrete Engineering**  
 Two Stafford Court Cranston, RI 02920  
 Tel: 401-943-7000 Fax: 401-949-6006 www.DIPrete-Eng.com  
 Engineers • Planners • Surveyors

DAVID A. RUSSO  
 No. 4335  
 REGISTERED PROFESSIONAL ENGINEER  
 CIVIL

This regulatory submission set shall not be used for construction purposes unless stamped 'Issued for Construction' and signed by a DIPrete Engineering representative.  
 The contractor is responsible for all of the means, methods, safety precautions and requirements, and OSHA compliance in the implementation of this plan and design.

2	03-2017	RIDEM RIC		D.A.R.	By:
1	03-2017	Wetlands Submission RIC		D.A.R.	By:
1	03-2017	Wetlands Submission		D.A.R.	By:
No.	Date	Description			Design By: D.A.R.

**Cover Sheet**  
**SSRE RI - A Street**  
 Applicant  
 Johnston, Rhode Island  
 Assessor's Plat 32, Lot 32  
**Southern Sky Renewable Energy Rhode Island, LLC**  
 117 Metro Center Boulevard, Suite 2007, Warwick, RI 02886  
 Tel: 401-562-0213  
 DE Job No: 0292-002-801. Copyright 2017 by DIPrete Engineering Associates, Inc.

c:\delmain\project\0292-002-a street\outcad\drawings\0292-002-dan.dwg Plotter: 3/15/2017

F:\Main\projects\0292-002-a street\autocad drawings\0292-002-dean.dwg Plotted: 3/31/2017

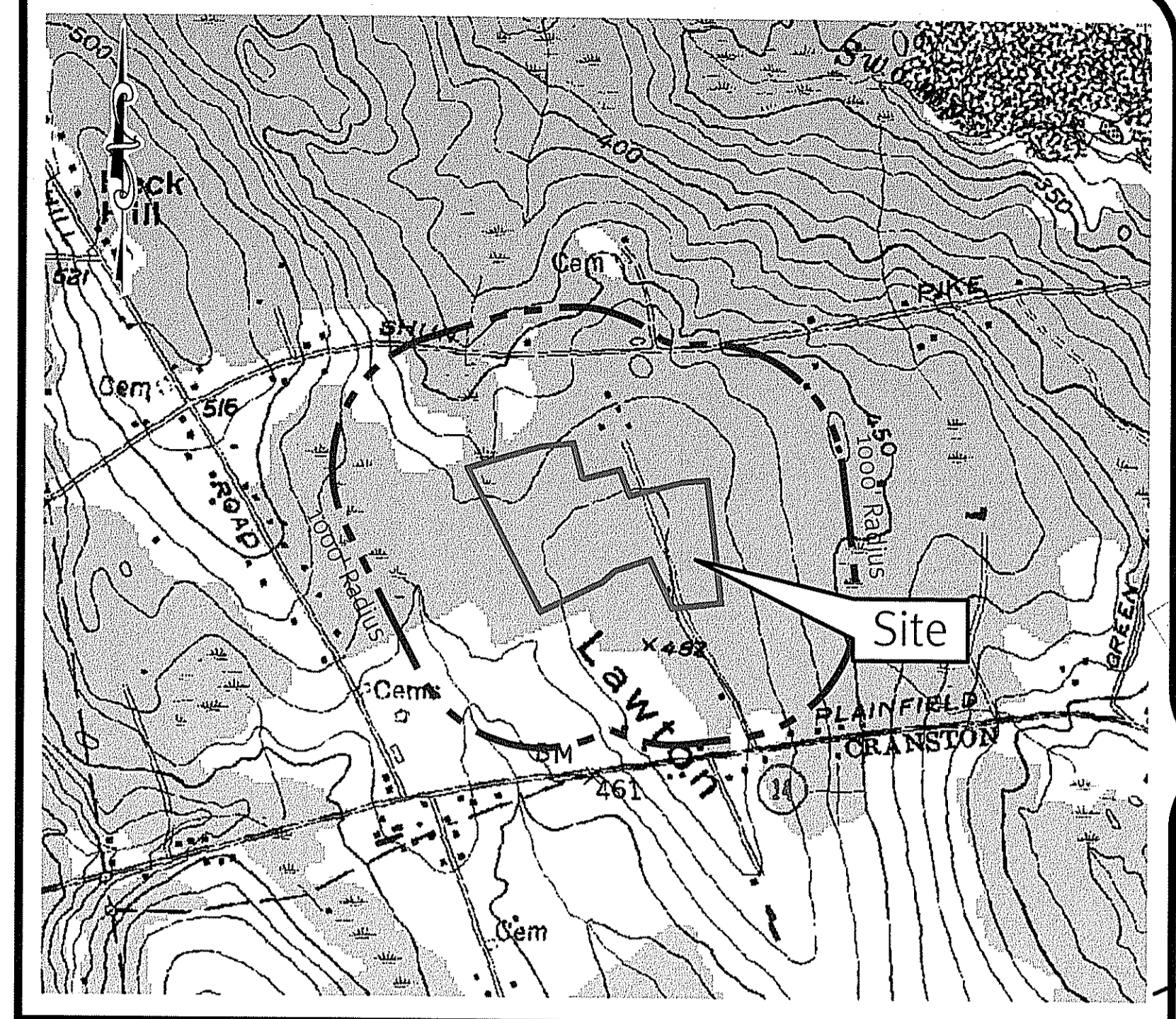
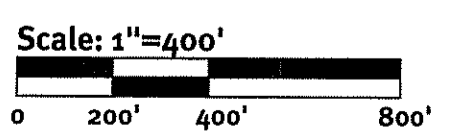


Photo obtained from the 2011 Rhode Island Department of Environmental Management Statewide Orthophotography from Rhode Island Geographic Information System (RI-GIS).



**DiPrete Engineering**  
 Two Stafford Court Cranston, RI 02920  
 Tel: 401-943-1000 Fax: 401-464-6006 www.DiPrete-Eng.com

**DAVID A. RUSSO**  
 No. 14355  
 REGISTERED PROFESSIONAL ENGINEER  
 CIVIL

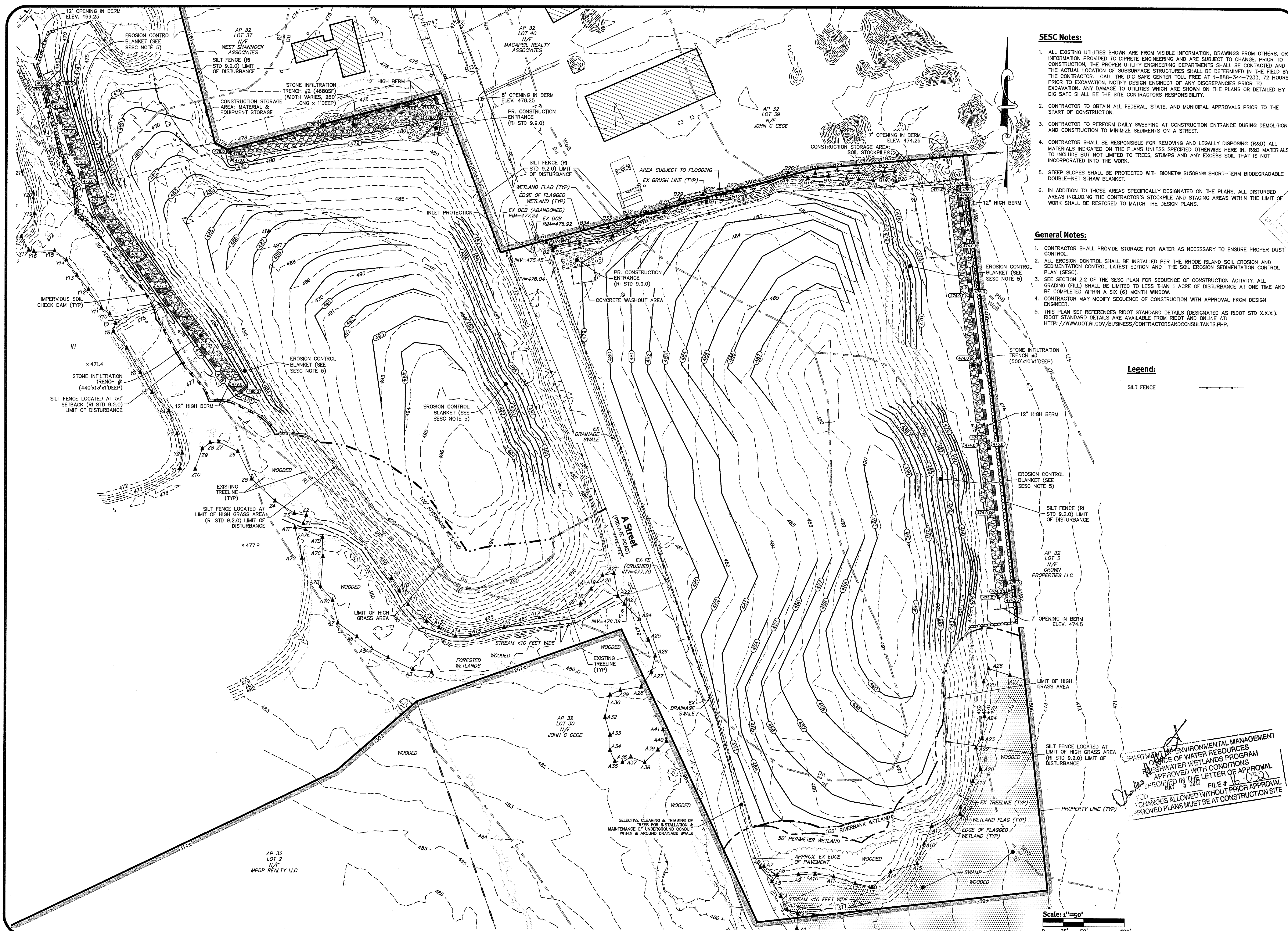
This regulatory submission set shall not be used for construction purposes unless stamped, issued for Cranston, RI, and signed by a DiPrete Engineering representative.

The contractor is responsible for all of the means, methods, safety precautions and requirements, and OSHA compliance in the implementation of this plan and design.

1	4-13-2017	DESIGN	D.A.R.	Design By: D.A.R.
2	4-13-2017	WETLANDS SUBMISSION	D.A.R.	
3	5-22-2016	WETLANDS SUBMISSION	D.A.R.	
4				
5				
6				
7				
8				
9				
10				

OFFICE OF ENVIRONMENTAL MANAGEMENT  
 OFFICE OF WATER RESOURCES  
 FRESHWATER WETLANDS PROGRAM  
 APPROVED WITH CONDITIONS  
 AS SPECIFIED IN THE LETTER OF APPROVAL  
 MAY 5 2017 FILE # 16-0321  
 NO CHANGES ALLOWED WITHOUT PRIOR APPROVAL  
 APPROVED PLANS MUST BE AT CONSTRUCTION SITE

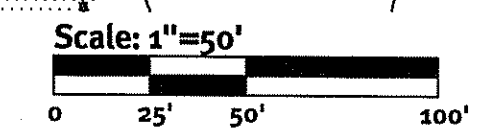
**1/2 Mile Radius & USGS Map**  
**SSRE RI - A Street**  
 Applicant: Southern Sky Renewable Energy Rhode Island, LLC  
 117 Metro Center Boulevard, Suite 2007, Warwick, RI 02886  
 Tel: 401-562-0213  
 DE Job No: 0292-002-801 Copyright 2017 by DiPrete Engineering Associates, Inc.



- SESC Notes:**
1. ALL EXISTING UTILITIES SHOWN ARE FROM VISIBLE INFORMATION, DRAWINGS FROM OTHERS, OR INFORMATION PROVIDED TO DIPRETE ENGINEERING AND ARE SUBJECT TO CHANGE. PRIOR TO CONSTRUCTION, THE PROPER UTILITY ENGINEERING DEPARTMENTS SHALL BE CONTACTED AND THE ACTUAL LOCATION OF SUBSURFACE STRUCTURES SHALL BE DETERMINED IN THE FIELD BY THE CONTRACTOR. CALL THE DIG SAFE CENTER TOLL FREE AT 1-888-344-7233, 72 HOURS PRIOR TO EXCAVATION. NOTIFY DESIGN ENGINEER OF ANY DISCREPANCIES PRIOR TO EXCAVATION. ANY DAMAGE TO UTILITIES WHICH ARE SHOWN ON THE PLANS OR DETAILED BY DIG SAFE SHALL BE THE SITE CONTRACTOR'S RESPONSIBILITY.
  2. CONTRACTOR TO OBTAIN ALL FEDERAL, STATE, AND MUNICIPAL APPROVALS PRIOR TO THE START OF CONSTRUCTION.
  3. CONTRACTOR TO PERFORM DAILY SWEEPING AT CONSTRUCTION ENTRANCE DURING DEMOLITION AND CONSTRUCTION TO MINIMIZE SEDIMENTS ON A STREET.
  4. CONTRACTOR SHALL BE RESPONSIBLE FOR REMOVING AND LEGALLY DISPOSING (R&D) ALL MATERIALS INDICATED ON THE PLANS UNLESS SPECIFIED OTHERWISE HERE IN. R&D MATERIALS TO INCLUDE BUT NOT LIMITED TO TREES, STUMPS AND ANY EXCESS SOIL THAT IS NOT INCORPORATED INTO THE WORK.
  5. STEEP SLOPES SHALL BE PROTECTED WITH BIONET® S150BN® SHORT-TERM BIODEGRADABLE DOUBLE-NET STRAW BLANKET.
  6. IN ADDITION TO THOSE AREAS SPECIFICALLY DESIGNATED ON THE PLANS, ALL DISTURBED AREAS INCLUDING THE CONTRACTOR'S STOCKPILE AND STAGING AREAS WITHIN THE LIMIT OF WORK SHALL BE RESTORED TO MATCH THE DESIGN PLANS.

- General Notes:**
1. CONTRACTOR SHALL PROVIDE STORAGE FOR WATER AS NECESSARY TO ENSURE PROPER DUST CONTROL.
  2. ALL EROSION CONTROL SHALL BE INSTALLED PER THE RHODE ISLAND SOIL EROSION AND SEDIMENTATION CONTROL LATEST EDITION AND THE SOIL EROSION SEDIMENTATION CONTROL PLAN (SESC).
  3. SEE SECTION 2.2 OF THE SESC PLAN FOR SEQUENCE OF CONSTRUCTION ACTIVITY. ALL GRADING (FILL) SHALL BE LIMITED TO LESS THAN 1 ACRE OF DISTURBANCE AT ONE TIME AND BE COMPLETED WITHIN A SIX (6) MONTH WINDOW.
  4. CONTRACTOR MAY MODIFY SEQUENCE OF CONSTRUCTION WITH APPROVAL FROM DESIGN ENGINEER.
  5. THIS PLAN SET REFERENCES RIDOT STANDARD DETAILS (DESIGNATED AS RIDOT STD X.X.X.). RIDOT STANDARD DETAILS ARE AVAILABLE FROM RIDOT AND ONLINE AT: [HTTP://WWW.DOT.RI.GOV/BUSINESS/CONTRACTORSANDCONSULTANTS.PHP](http://www.dot.ri.gov/business/contractorsandconsultants.php).

**Legend:**



**Diprete Engineering**  
 Two Stafford Court Cranston, RI 02920  
 Tel: 401-943-1000 Fax: 401-461-6006 www.Diprete-Eng.com  
 Engineers • Planners • Surveyors

**DAVID A. RUSSO**  
 No. 1355  
 REGISTERED PROFESSIONAL ENGINEER  
 CIVIL

This regulatory submission set shall not be used for construction purposes unless stamped 'Issued for Construction' and signed by a Diprete Engineering representative.

The contractor is responsible for all of the means, methods, safety precautions and requirements, and OSHA compliance in the implementation of this plan and design.

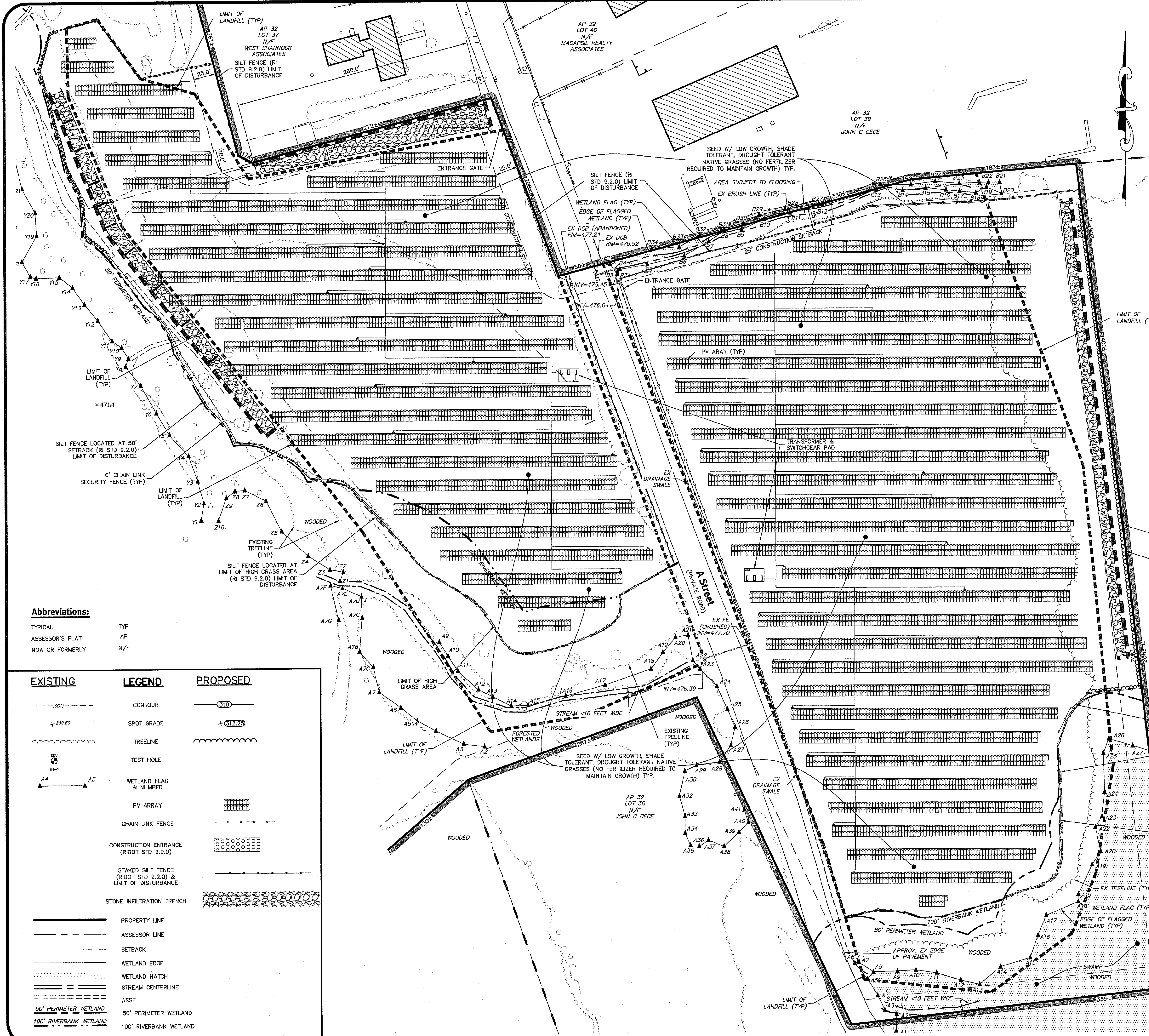
DATE	BY	DESCRIPTION
4-23-2017	D.A.R.	Initial Design
5-23-2017	D.A.R.	Final Design
5-23-2017	D.A.R.	Final Design

Drawn By: D.A.R. Design By: D.A.R.

DEPARTMENT OF ENVIRONMENTAL MANAGEMENT  
 OFFICE OF WATER RESOURCES  
 FRESHWATER WETLANDS PROGRAM  
 APPROVED WITH CONDITIONS  
 AS SPECIFIED IN THE LETTER OF APPROVAL  
 MAY 3 2017 FILE # 16-0321  
 ALL CHANGES ALLOWED WITHOUT PRIOR APPROVAL  
 APPROVED PLANS MUST BE AT CONSTRUCTION SITE

**SESC & Grading Plan**  
**SSRE RI - A Street**  
 Johnston, Rhode Island  
 Assessor's Plat 32, Lot 32  
 Applicant: Southern Sky Renewable Energy Rhode Island, LLC  
 117 Metro Center Boulevard, Suite 2007, Warwick, RI 02886  
 Tel: 401-562-0213  
 DE Job No: 0392-002-801 Copyright ©2017 by Diprete Engineering Associates, Inc.

Z:\Main\projects\0392-002-a street\autocad drawings\0392-002-dm.dwg Plotted: 4/18/2017



- General Notes:**
1. THE SITE IS LOCATED ON AP 32 LOT 32 AND IS APPROXIMATELY 32.34± ACRES.
  2. THE SITE IS CURRENTLY ZONE INDUSTRIAL-1.
  3. THE OWNER OF AP 32 LOT 32 ARE ROBERT A & JOHN C CECE AND MICHAEL & STEPHEN M MACERA c/o WEST SHANNOCK ASSOCIATES.
  4. THIS PLAN SET REFERENCES RIDOT STANDARD DETAILS (DESIGNATED AS RIDOT STD X.X.X). RIDOT STANDARD DETAILS ARE AVAILABLE FROM RIDOT AND ONLINE AT: WWW.DOT.STATE.RI.US/ENGINEERING/STANDARDS/INDEX.ASP.
  5. THE STORMWATER MANAGEMENT SYSTEM WILL MEET THE RIDEM BEST MANAGEMENT PRACTICES AND REQUIRES A RIDEM WETLANDS PERMIT.
  6. THE SITE IS PROPOSED TO BE BUILT IN ONE PHASE.

**Dimensional Regulations:**

CURRENT ZONING:	INDUSTRIAL-1	PROPOSED
MINIMUM FRONT YARD	50'	25'
MINIMUM SIDE YARD	50'	25'
MINIMUM REAR YARD	50'	50'
MAXIMUM LOT COVERAGE	40%	-
MAXIMUM BUILDING HEIGHT	40'	-

**Soil Information:**

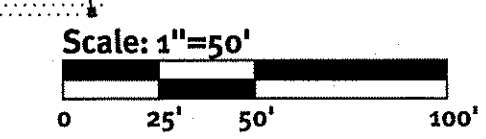
(REFERENCE: SOIL SURVEY OF RHODE ISLAND, U.S.D.A. SOIL CONSERVATION SERVICE)

SOIL NAME	DESCRIPTION
Du	DUMPS
PuB	PAXTON FINE SANDY LOAM, 3 TO 8 PERCENT SLOPES
PuB	PAXTON VERY STONY FINE SANDY LOAM, 0 TO 8 PERCENT SLOPES
Rf	RIDGEBURY, WHITMAN, AND LEICESTER EXTREMELY STONY FINE SANDY LOAMS
WoB	WOODBIDGE VERY STONY FINE SANDY LOAM, 0 TO 8 PERCENT SLOPES

**Abbreviations:**

TYPICAL TYP  
 ASSESSOR'S PLAT AP  
 NOW OR FORMERLY N/F

EXISTING	LEGEND	PROPOSED
--- 300 ---	CONTOUR	--- 310 ---
+ 299.00	SPOT GRADE	+ 312.25
~~~~~	TREELINE	~~~~~
⊙	TEST HOLE	
WETLAND FLAG & NUMBER		
GRID	PV ARRAY	GRID
CHAIN LINK FENCE		CHAIN LINK FENCE
CONSTRUCTION ENTRANCE (RIDOT STD 9.9.0)		CONSTRUCTION ENTRANCE (RIDOT STD 9.9.0)
STAKED SILT FENCE (RIDOT STD 9.2.0) & LIMIT OF DISTURBANCE		STAKED SILT FENCE (RIDOT STD 9.2.0) & LIMIT OF DISTURBANCE
STONE INFILTRATION TRENCH		STONE INFILTRATION TRENCH
PROPERTY LINE		PROPERTY LINE
ASSESSOR LINE		ASSESSOR LINE
SETBACK		SETBACK
WETLAND EDGE		WETLAND EDGE
WETLAND HATCH		WETLAND HATCH
STREAM CENTERLINE		STREAM CENTERLINE
ASSF		ASSF
50' PERIMETER WETLAND		50' PERIMETER WETLAND
100' RIVERBANK WETLAND		100' RIVERBANK WETLAND



**DiPrete Engineering**  
 Two Stafford Court, Cranston, RI 02920  
 Tel: 401-943-1000 Fax: 401-464-6006 www.DiPrete-Eng.com

Engineers • Planners • Surveyors

**DAVID A. RUSSO**  
 No. 4355  
 REGISTERED PROFESSIONAL ENGINEER  
 CIVIL

This regulatory submission set shall not be used for construction purposes unless stamped "Issued for Construction" and signed by a DiPrete Engineering representative.

The contractor is responsible for all of the means, methods, safety precautions and requirements of the construction of the project in the implementation of this plan and design.

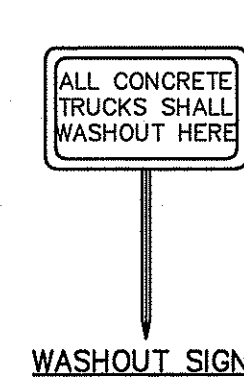
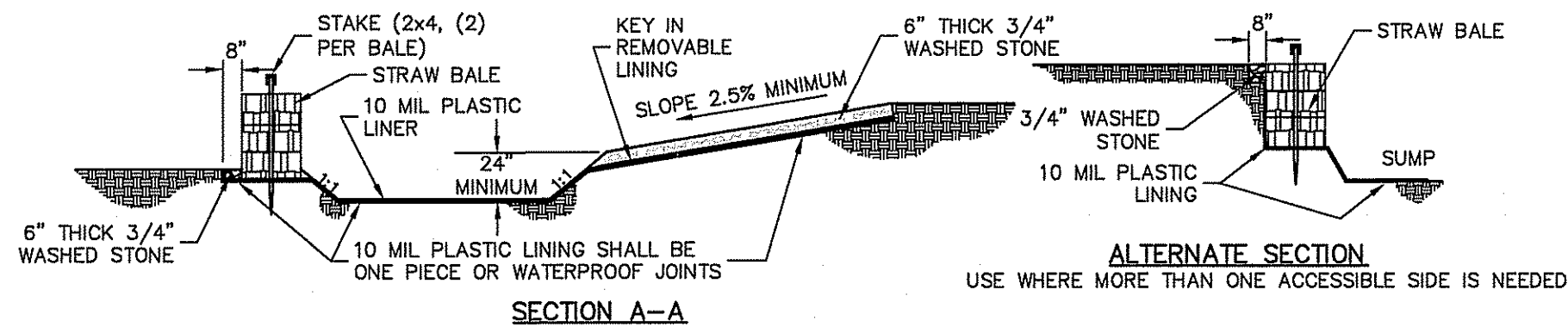
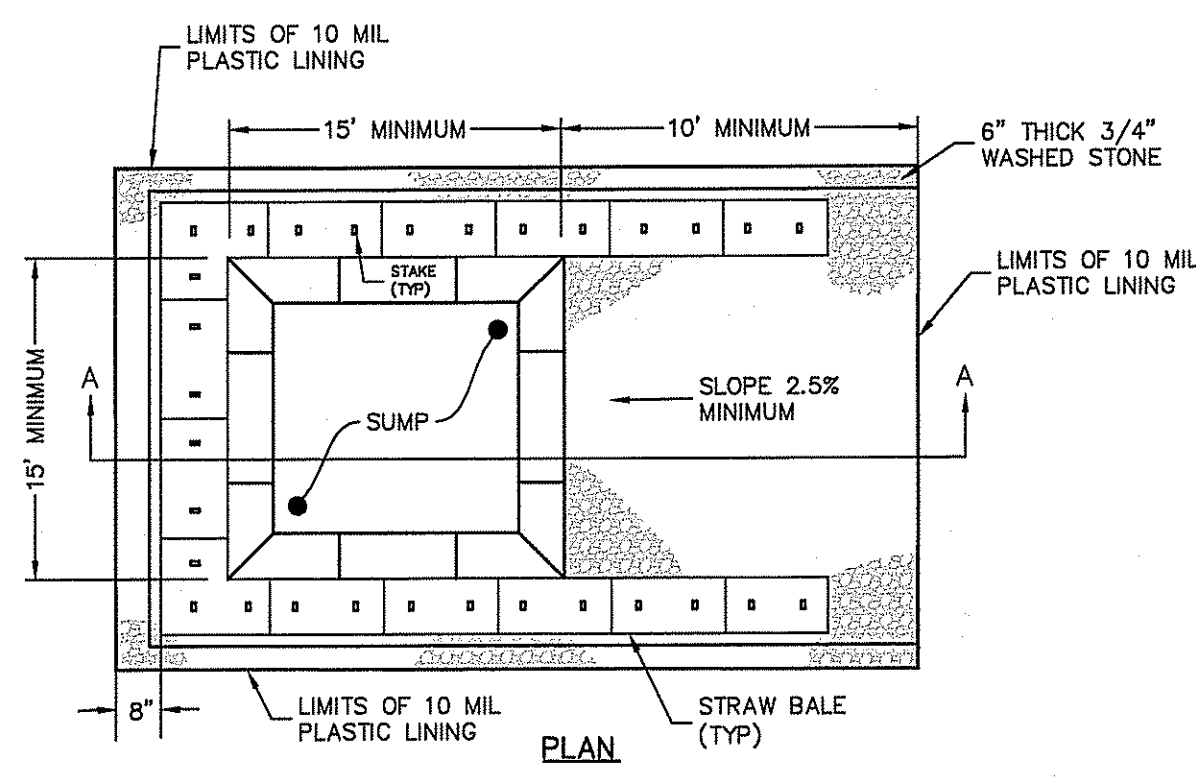
No.	Date	Description	Design By: D.A.R.
1	03-23-2017	Initial Submission	
2	03-23-2017	Revised Submission	
3	03-23-2017	Final Submission	

DEPARTMENT OF ENVIRONMENTAL MANAGEMENT  
 OFFICE OF WATER RESOURCES  
 FRESHWATER WETLANDS PROGRAM  
 APPROVED WITH CONDITIONS  
 SPECIFIED IN THE LETTER OF APPROVAL  
 MAY 5 2017 FILE # 16-022  
 CHANGES ALLOWED WITHOUT PRIOR APPROVAL  
 APPROVED PLANS MUST BE AT CONSTRUCTION SITE

**Site Plan**  
**SSRERI - A Street**  
 Applicant: Johnson, Rhode Island  
 Assessor's Plat: 32-LOT-32  
**Southern Sky Renewable Energy Rhode Island, LLC**  
 117 Metro Center Boulevard, Suite 2007, Warwick, RI 02886  
 Tel: 401-562-0233

Design By: D.A.R.

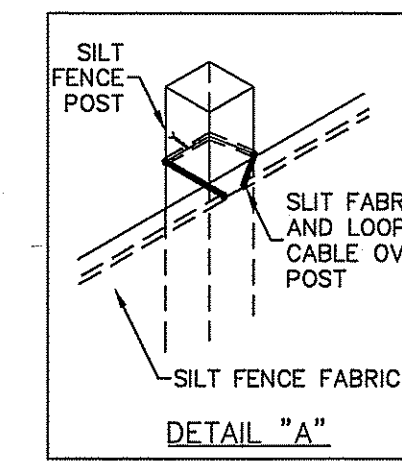
Copyright 2017 by DiPrete Engineering Associates, Inc.



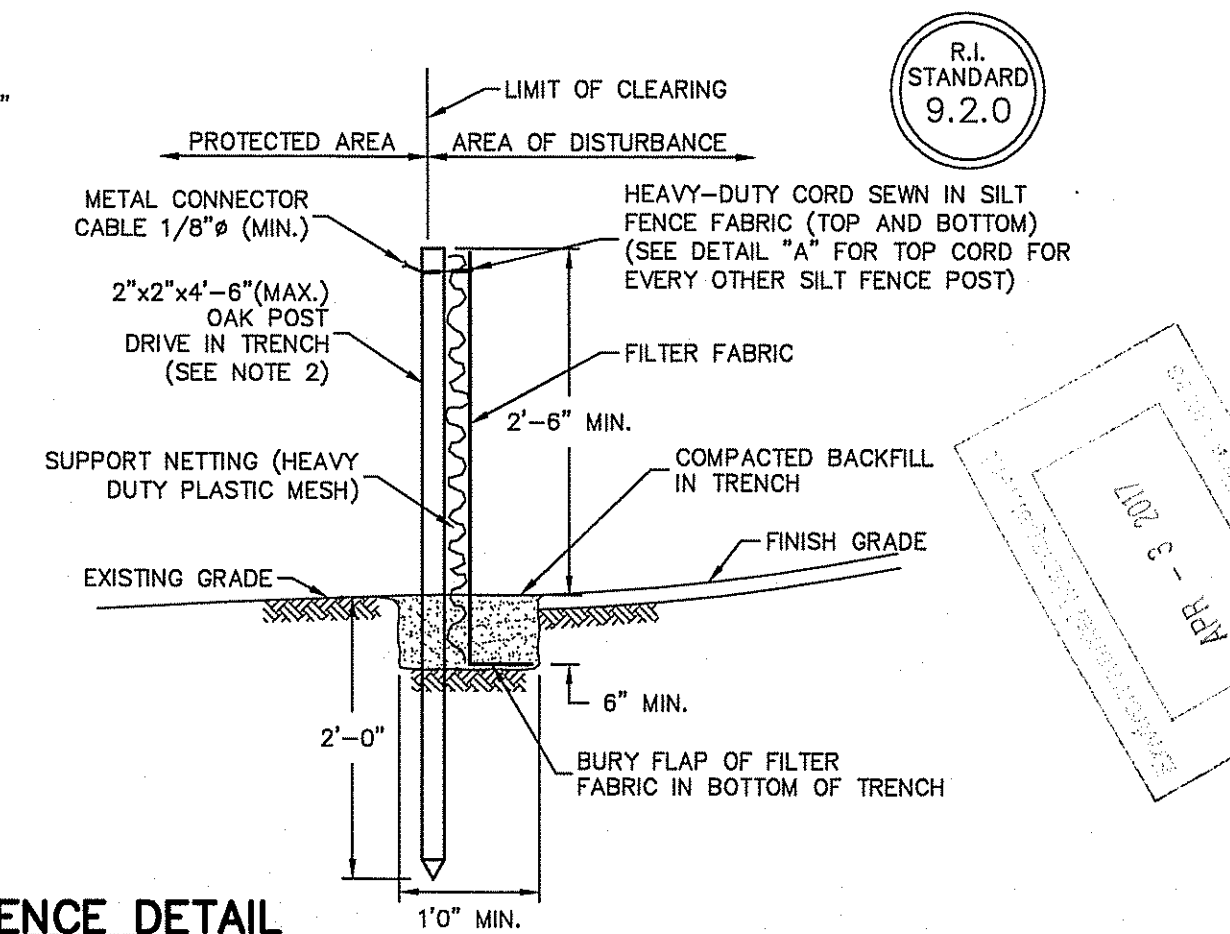
**Concrete Washout Area**  
(NOT TO SCALE)

- NOTES:**
- PIT IS SPECIFICALLY DESIGNATED, DIKED AND IMPERVIOUS CONTAINMENT TO PREVENT CONTACT BETWEEN CONCRETE WASH AND STORMWATER.
  - WASH WATER SHALL NOT BE ALLOWED TO FLOW TO SURFACE WATER.
  - FACILITY MUST HOLD SUFFICIENT VOLUME TO CONTAIN CONCRETE WASTE WITH A MINIMUM FREEBOARD OF 12."
  - FACILITY SHALL NOT BE FILLED BEYOND 95% CAPACITY UNLESS A NEW FACILITY IS CONSTRUCTED.
  - SAWCUT PORTLAND CEMENT CONCRETE, RESIDUE FROM SAWCUT AND GRINDING TO BE DISPOSED OF IN THE PIT.
  - CONCRETE WASHOUTS SHALL BE LOCATED A MINIMUM OF 100' FROM DRAINAGE WAYS, INLETS, AND SURFACE WATERS.
  - MANUFACTURED CONCRETE WASHOUT DEVICES MAY BE USED IF REMOVED FROM THE SITE WHEN 95% FULL CAPACITY.

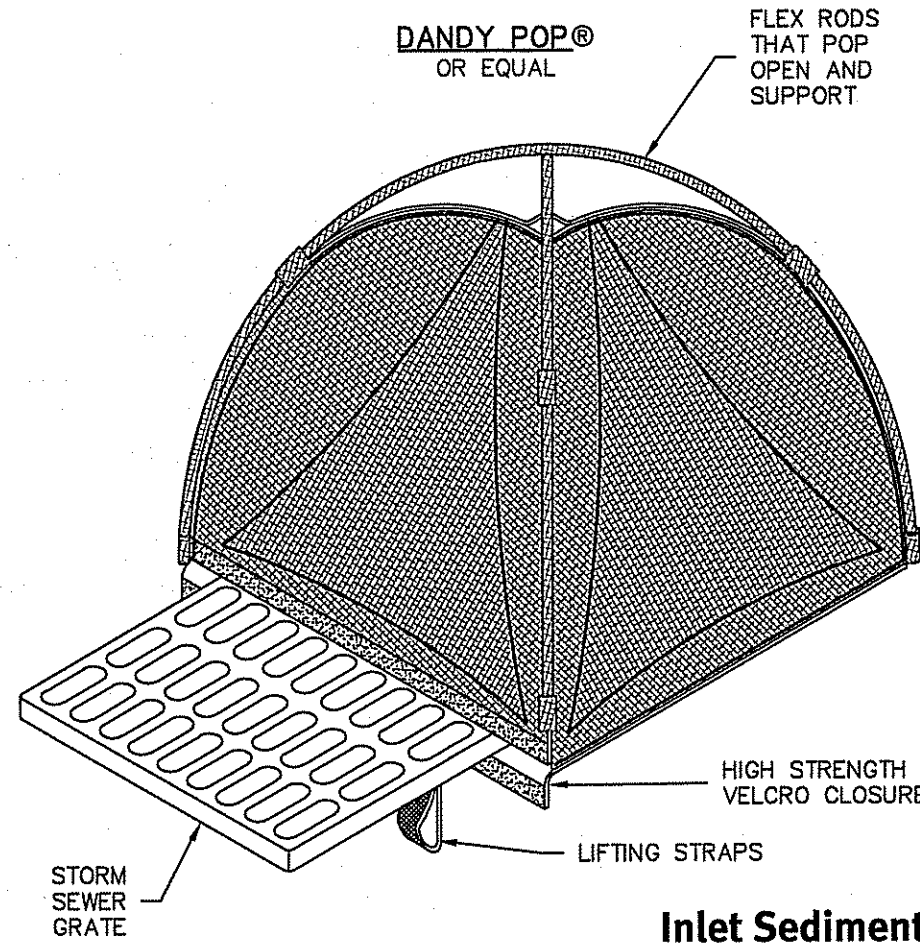
- NOTES:**
- SHALL BE IN ACCORDANCE WITH SECTION 206 OF THE R.I. STANDARD SPECIFICATIONS.
  - 2"x2"x4'-8"(MAX.) OAK POSTS FOR SILT FENCE SHALL BE LOCATED 8'-0" (MAX.) O.C. IN WETLAND AREAS AND 4'-0" (MAX.) O.C. IN WETLAND RAVINE, GULLY OR DROP-OFF AREAS AS SHOWN ON PLANS.
  - 1"x1"x4'-8"(MIN.) POSTS PERMITTED FOR PRE-FABRICATED SILT FENCE.
  - SILT FENCE SHALL BE INSTALLED BEFORE ANY GRUBBING OR EARTH EXCAVATION TAKES PLACE.



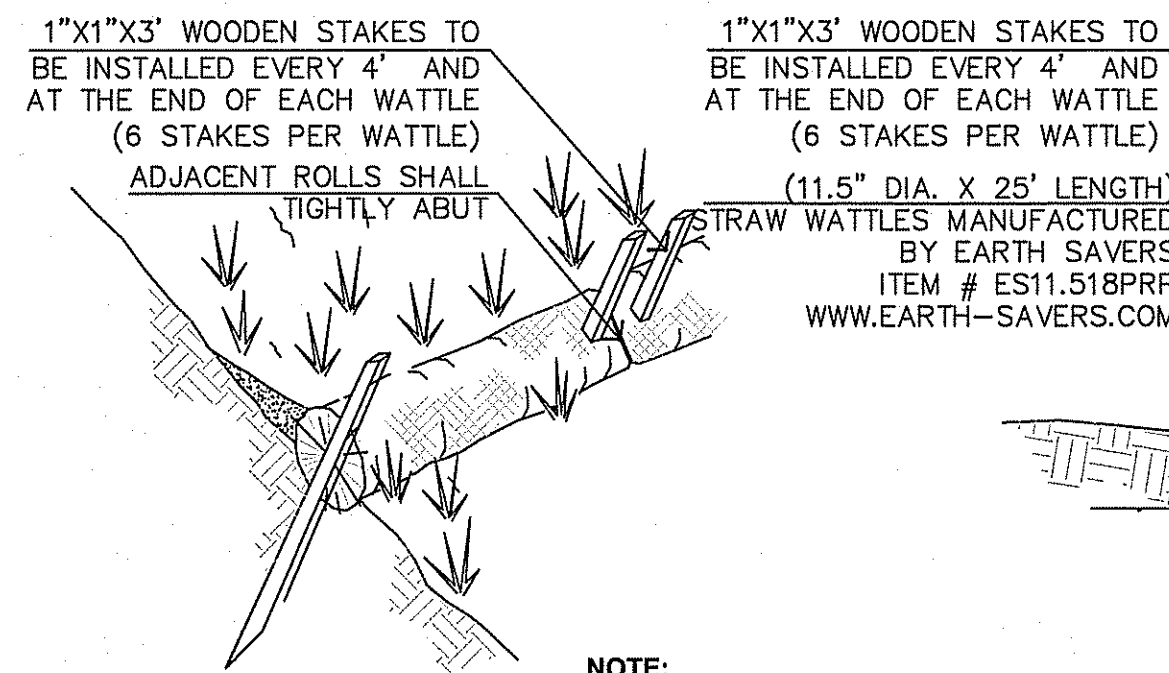
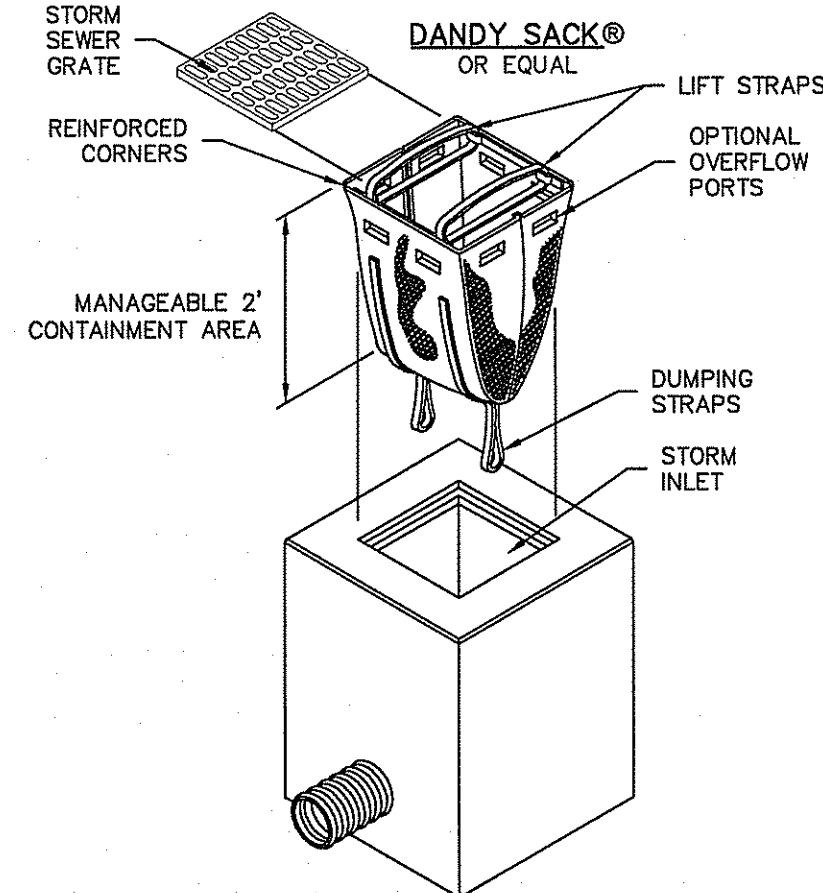
**SILT FENCE DETAIL**  
NOT TO SCALE



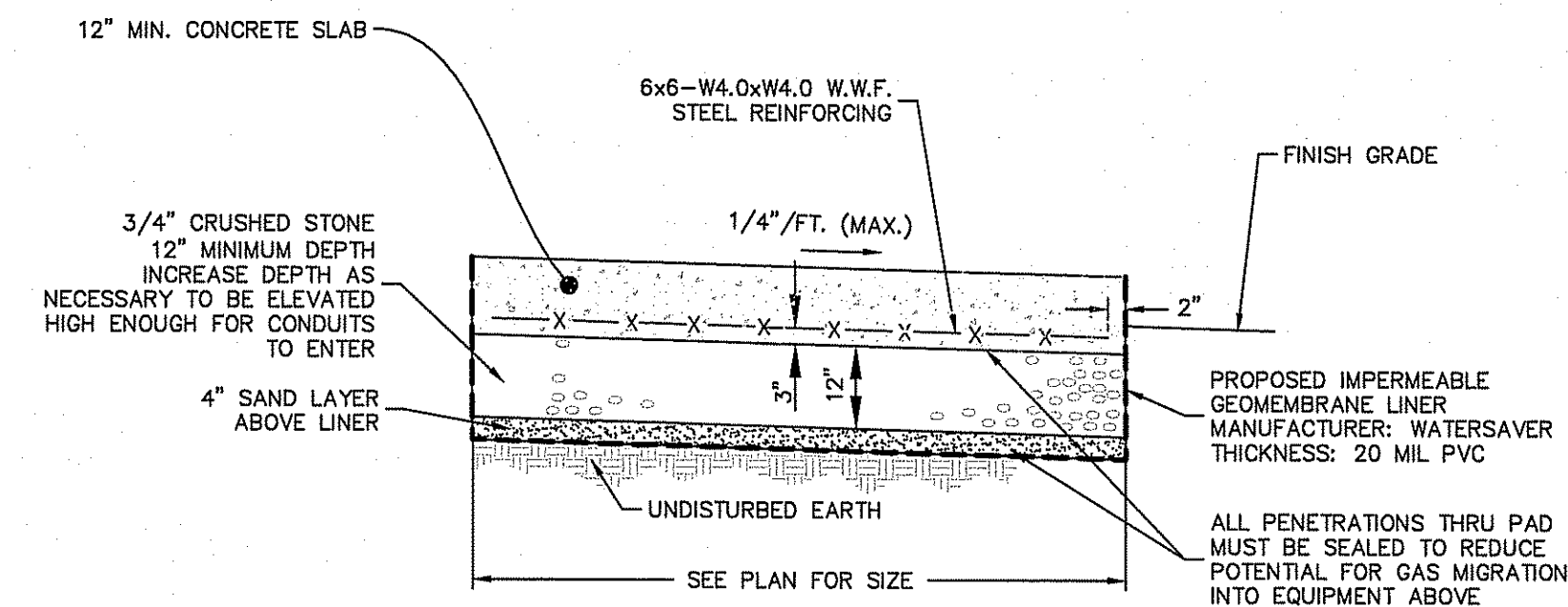
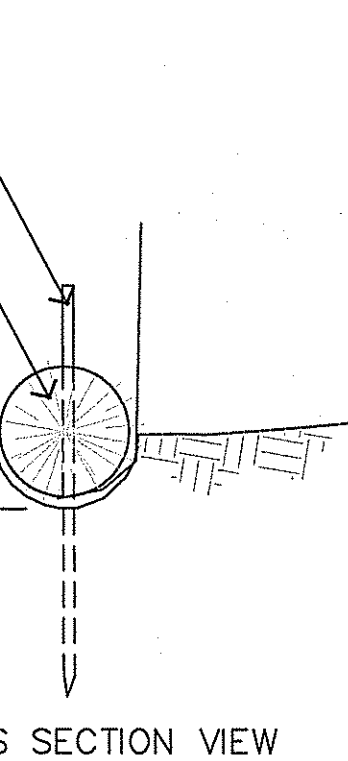
R.I. STANDARD 9.2.0



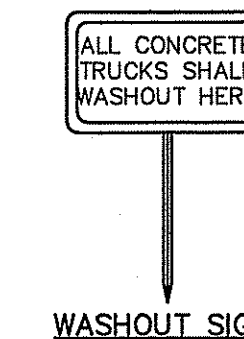
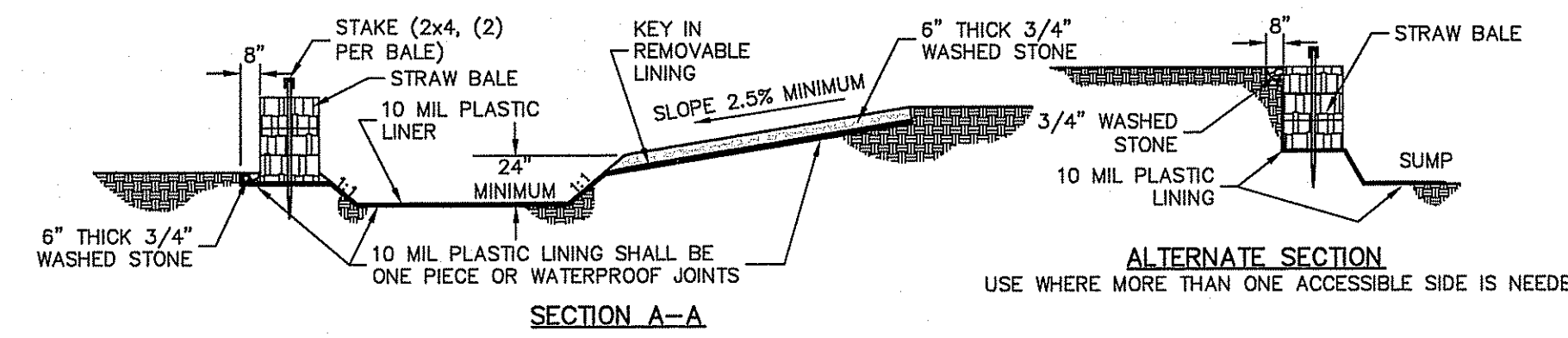
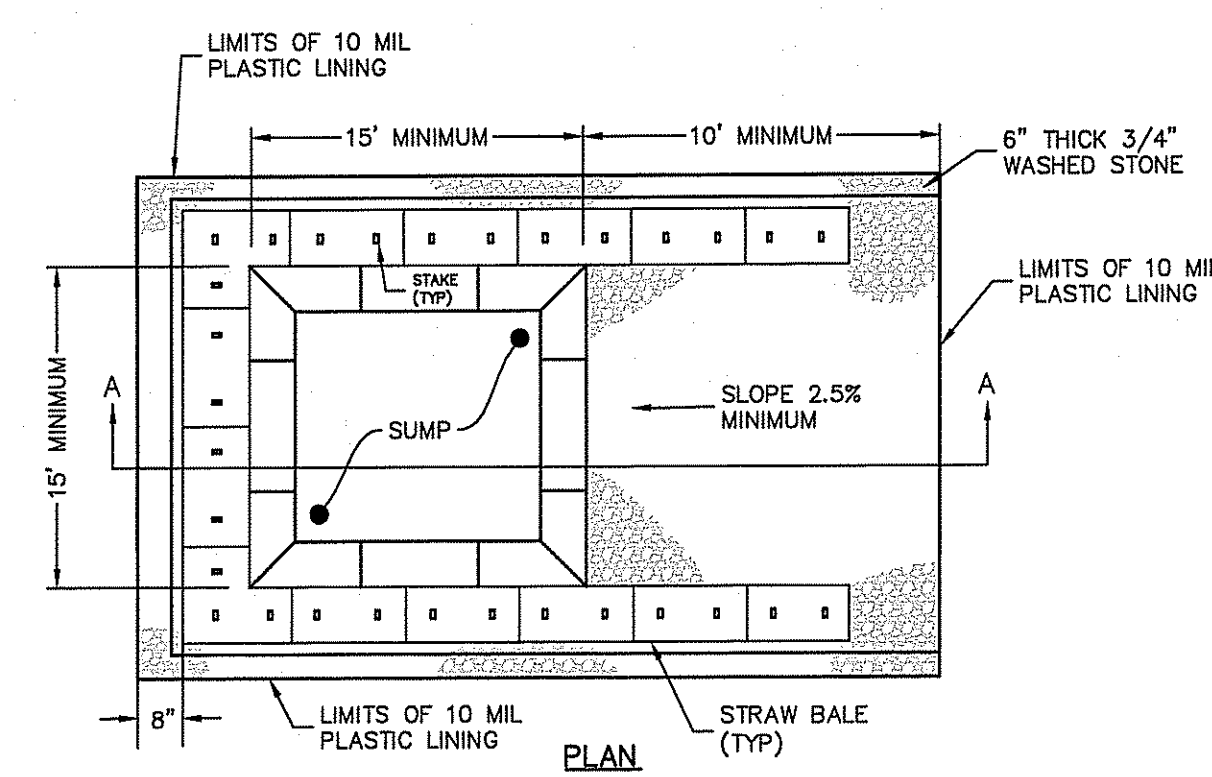
**Inlet Sediment Control Devices**  
NOT TO SCALE



**STRAW WATTLE SEDIMENT BARRIER**  
NOT TO SCALE

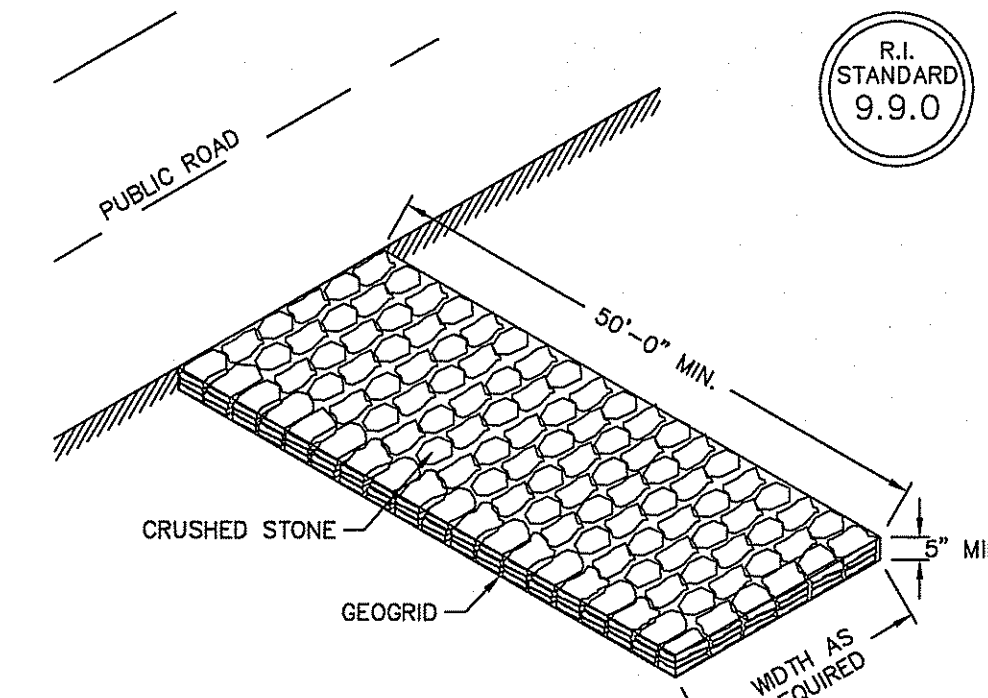


**TYP. CONCRETE EQUIPMENT PAD**  
NOT TO SCALE

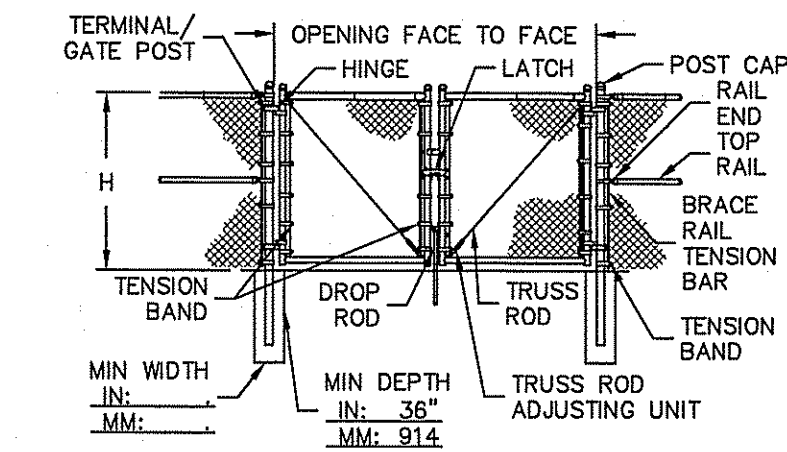


**Concrete Washout Area**  
(NOT TO SCALE)

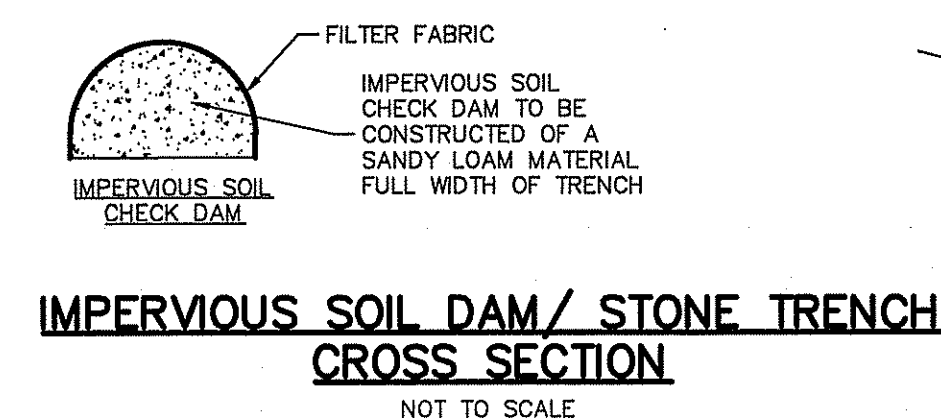
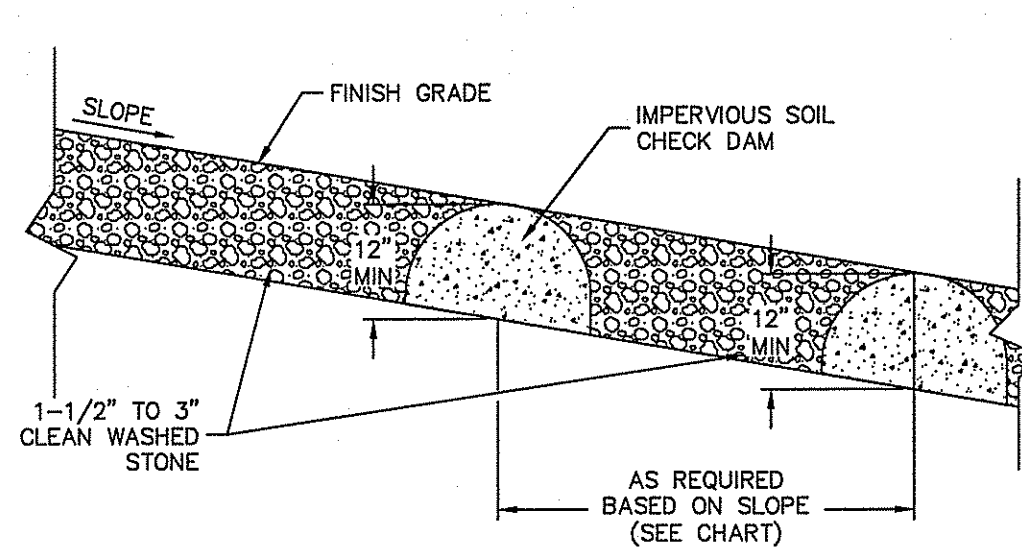
- NOTES:**
- PIT IS SPECIFICALLY DESIGNATED, DIKED AND IMPERVIOUS CONTAINMENT TO PREVENT CONTACT BETWEEN CONCRETE WASH AND STORMWATER.
  - WASH WATER SHALL NOT BE ALLOWED TO FLOW TO SURFACE WATER.
  - FACILITY MUST HOLD SUFFICIENT VOLUME TO CONTAIN CONCRETE WASTE WITH A MINIMUM FREEBOARD OF 12."
  - FACILITY SHALL NOT BE FILLED BEYOND 95% CAPACITY UNLESS A NEW FACILITY IS CONSTRUCTED.
  - SAWCUT PORTLAND CEMENT CONCRETE, RESIDUE FROM SAWCUT AND GRINDING TO BE DISPOSED OF IN THE PIT.
  - CONCRETE WASHOUTS SHALL BE LOCATED A MINIMUM OF 100' FROM DRAINAGE WAYS, INLETS, AND SURFACE WATERS.
  - MANUFACTURED CONCRETE WASHOUT DEVICES MAY BE USED IF REMOVED FROM THE SITE WHEN 95% FULL CAPACITY.



**CONSTRUCTION ACCESS**  
NOT TO SCALE



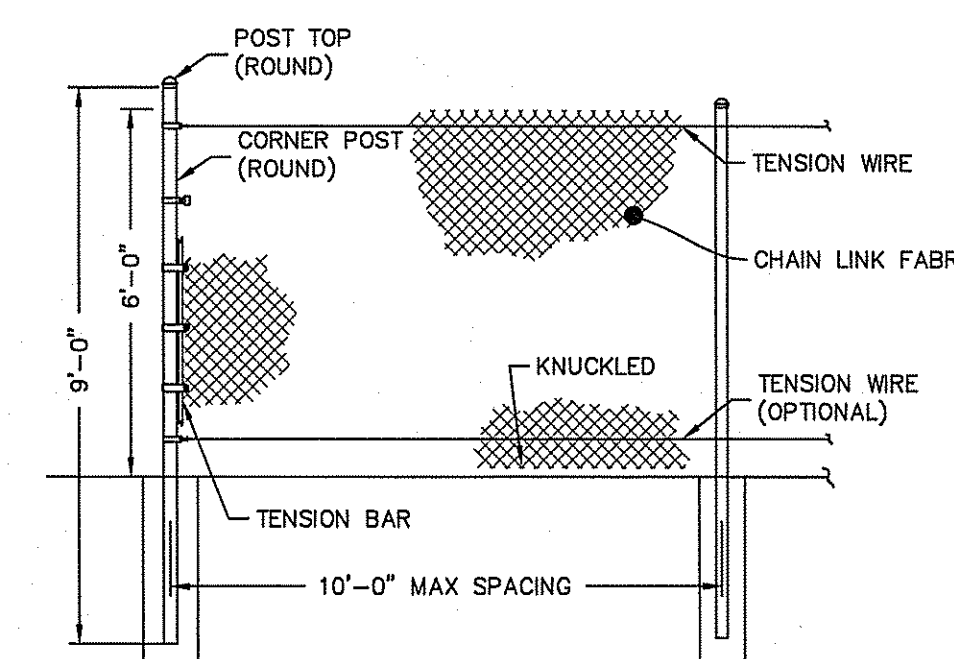
**DOUBLE SWING GATE 6-16' OPENING**  
NOT TO SCALE



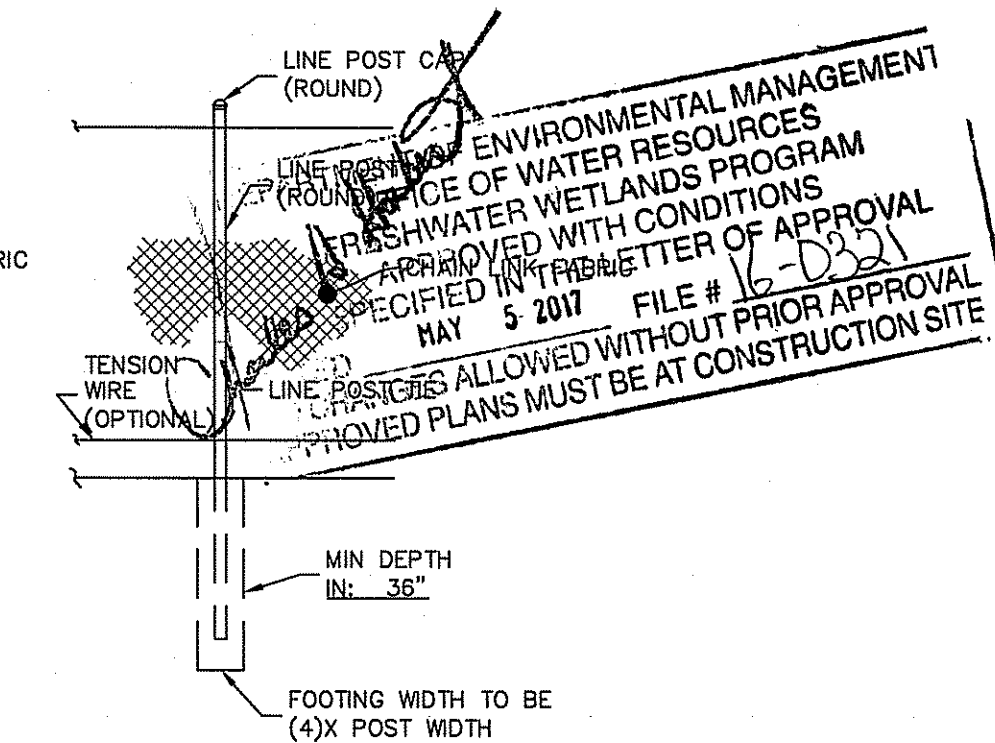
DAM LOCATION CHART		
SLOPE	DISTANCE BETWEEN DAMS	
1%	100'	
2%	50'	
3%	33.3'	
4%	25'	
5%	20'	

STONE TRENCH	1	2	3
TOP OF TRENCH	475.0*	478.0	474.0
BOTTOM OF TRENCH	474.0*	477.0	473.0
SEASONAL HIGH GWT ELEVATION	471.0*	472-474	470.0
SOIL SEPARATION	3'	3'-5'	3'

\* TRENCH # 1 IS SLOPING, ELEVATION IS AT MID POINT OF TRENCH



**FENCE DETAIL**  
NOT TO SCALE



Detail Sheet - 1  
SSRE RI - A Street

**Southern Sky Renewable Energy Rhode Island, LLC**  
Applicant  
117 Metro Center Boulevard, Suite 2007, Warwick, RI 02886  
tel 401-562-0213

DAVID A. RUSSO  
No. 1335  
REGISTERED PROFESSIONAL ENGINEER  
CIVIL

This regulatory submission set shall not be used for construction purposes unless stamped, issued for construction, and signed by a Diprete Engineering representative.

The contractor is responsible for all of the means, methods, safety precautions and requirements, and OSHA performance in the implementation of this plan and design.

No.	Date	Description	By	Design By: D.A.R.
1	03-29-2017	ROAD, P.C.	D.A.R.	
2	03-29-2017	Wetlands Submission	D.A.R.	
3	03-29-2017	Wetlands Submission	D.A.R.	

DE Job No. 0292-002-001 Copyright 2017 by Diprete Engineering Associates, Inc.

z:\demain\projects\0292-002 a street\autocad drawings\0292-002-dim.dwg Plotter: 3/31/2017

