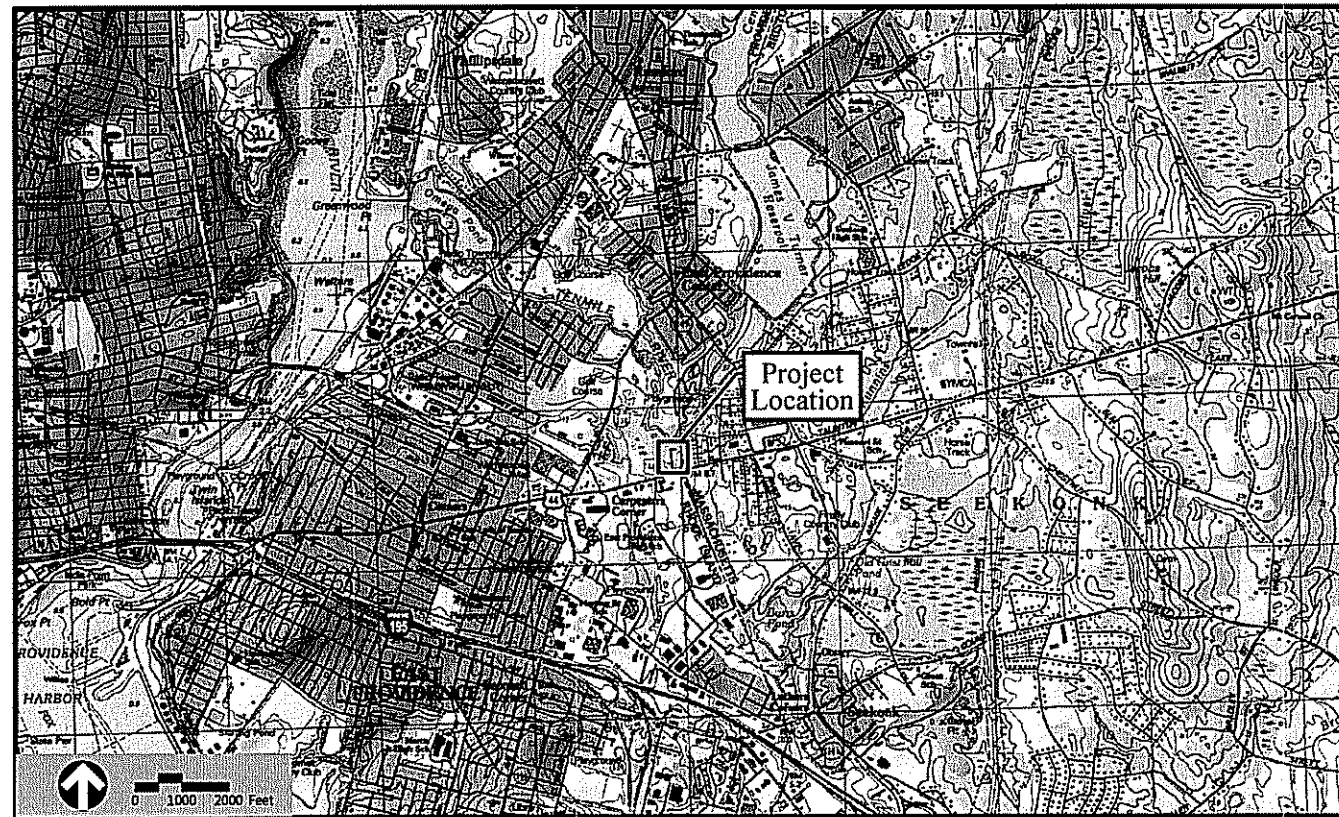


# Plans

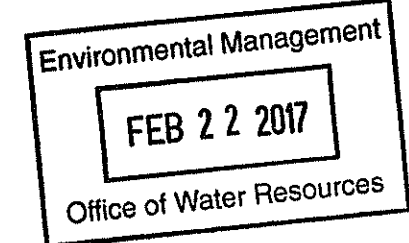
Issued for	RIDEM Request for Preliminary Determination
Date Issued	February 13, 2017
Latest Issue	February 13, 2017

## Algonquin Gas Transmission, LLC Dey Street Meter and Regulation Station Proposed Filter Installation Project

27 Dey Street  
East Providence, Rhode Island



1 Cedar Street  
Suite 400  
Providence, RI 02903  
401.272.8100



### Owner/Applicant

The Narragansett Electric Company  
280 Melrose Street  
Providence, Rhode Island 02903

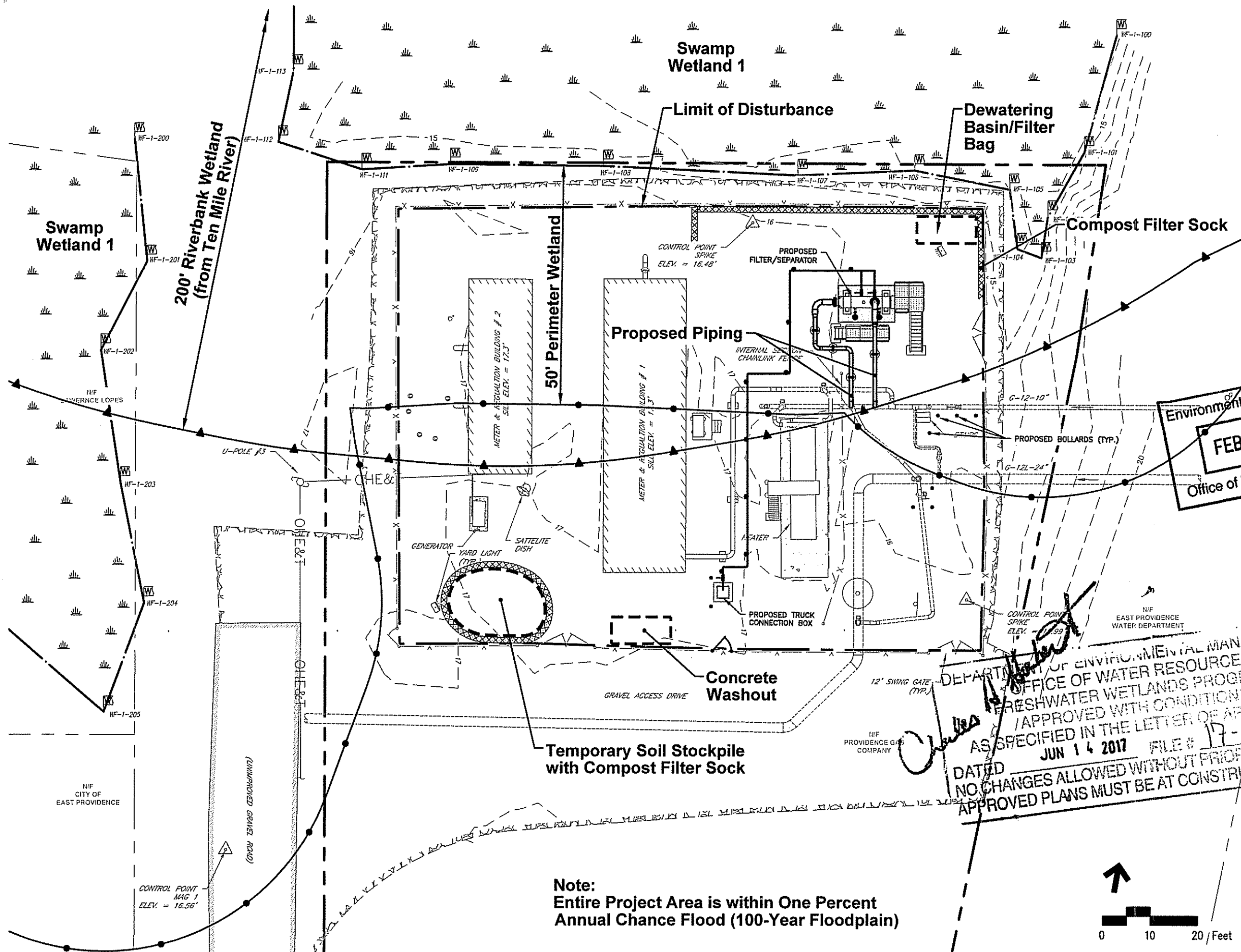
Algonquin Gas Transmission, LLC  
5400 Westheimer Ct.  
Houston, Texas 77056-5310  
713-627-5400

Assessor's Map: 505  
Lot: 3

### Sheet Index

No.	Drawing Title	Latest Issue
C-1	Cover	February 13, 2017
C-2	Soil Erosion and Sediment Control Plan	February 13, 2017
C-3	Property Line Plan	February 13, 2017
C-4	General Notes and Details	February 13, 2017

*Charles A. Herbert*  
 RO  
 OFFICE OF WATER RESOURCES  
 FRESHWATER WETLANDS PROGRAM  
 APPROVED WITH CONDITIONS  
 AS SPECIFIED IN THE LETTER OF APPROVAL  
 JUN 14 2017 FILE # 17-0039  
 NO CHANGES ALLOWED WITHOUT PRIOR APPROVAL  
 APPROVED PLANS MUST BE AT CONSTRUCTION SITE



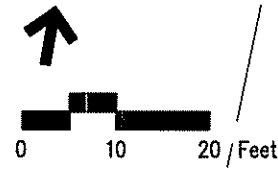
- LEGEND**
- PROPERTY LINE
  - ADJACENT PROPERTY LINE
  - EDGE OF PAVEMENT
  - EDGE OF GRAVEL
  - 20' CONTOUR
  - - - FENCE LINE
  - X OVERHEAD ELECTRIC & TELEPHONE
  - EDGE OF WETLAND
  - WETLAND AREA
  - 50' PERIMETER WETLAND
  - 1% CHANCE OF FLOOD
  - COMPOST FILTER SOCK
  - MANHOLE
  - UTILITY POLE
  - YARD LIGHT
  - GAS PIPELINE MARKER
  - GAS MANHOLE
  - SIGN
  - WETLAND FLAG
  - PROPOSED BOLLARD

Environmental Management  
FEB 22 2017  
Office of Water Resources

Algonquin Gas Transmission, LLC  
Dey Street Meter and Regulation Station  
Proposed Filter Installation Project  
AP 505 Lot 3  
27 Dey Street  
East Providence, Rhode Island

DEPARTMENT OF ENVIRONMENTAL MANAGEMENT  
OFFICE OF WATER RESOURCES  
FRESHWATER WETLANDS PROGRAM  
APPROVED WITH CONDITIONS  
AS SPECIFIED IN THE LETTER OF APPROVAL  
JUN 14 2017 FILE # 17-0039  
DATED  
NO CHANGES ALLOWED WITHOUT PRIOR APPROVAL  
APPROVED PLANS MUST BE AT CONSTRUCTION SITE

Note:  
Entire Project Area is within One Percent  
Annual Chance Flood (100-Year Floodplain)



No.	Revision	Date	App'd.

Designed by: \_\_\_\_\_ Checked by: \_\_\_\_\_  
Issued for: \_\_\_\_\_ Date: \_\_\_\_\_  
RIDEM Request for February 13, 2017  
Preliminary Determination  
Not Approved for Construction

Soil Erosion and Sediment Control Plan

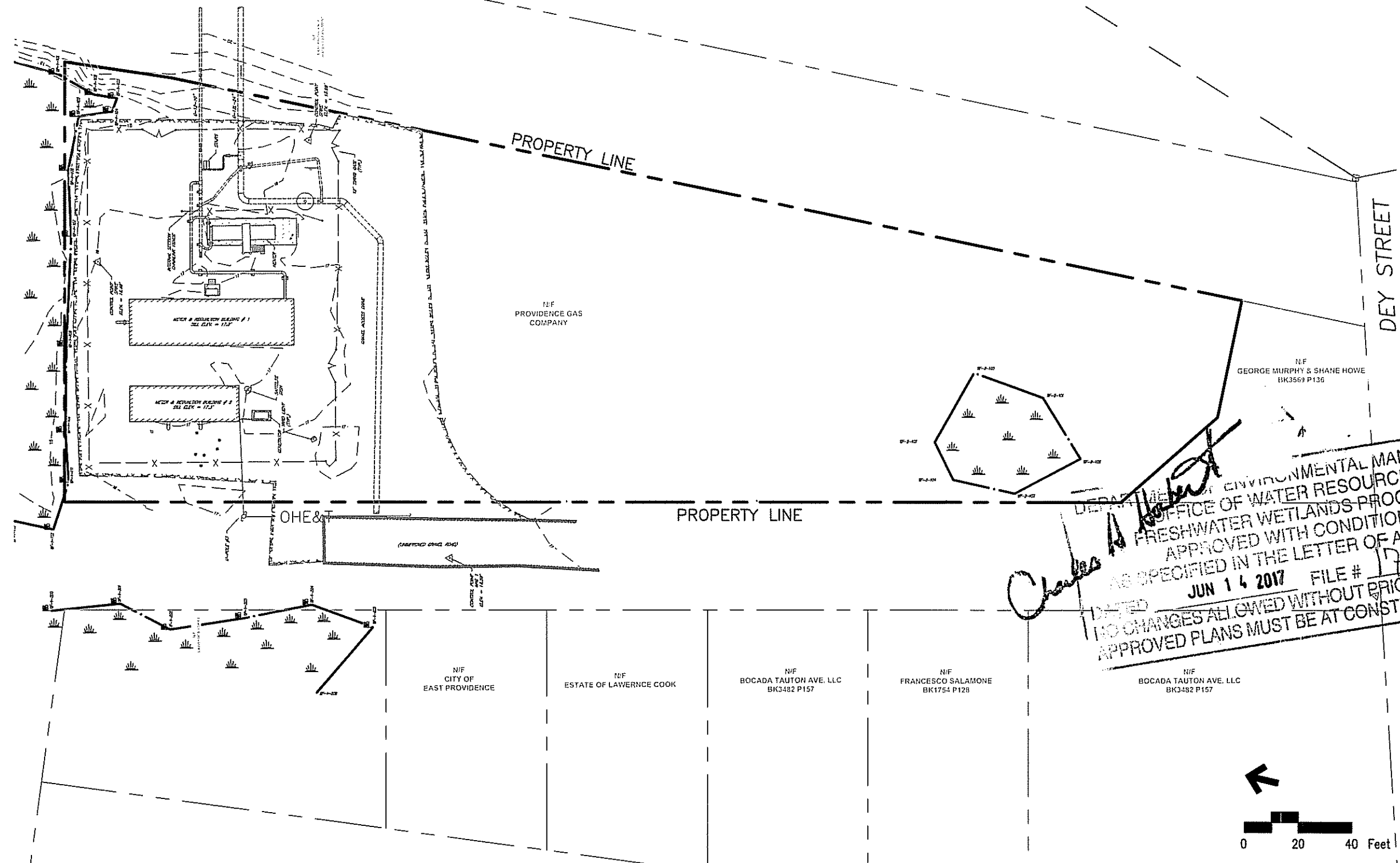
Drawing Number



1 Cedar Street  
Suite 400  
Providence, RI 02903  
401.272.8100

- LEGEND**
- PROPERTY LINE
  - ADJACENT PROPERTY LINE
  - EDGE OF PAVEMENT
  - EDGE OF GRAVEL
  - 20 --- CONTOUR
  - X- FENCE LINE
  - OVERHEAD ELECTRIC & TELEPHONE
  - EDGE OF WETLAND
  - WETLAND AREA
  - MANHOLE
  - UTILITY POLE
  - YARD LIGHT
  - PRELIMINARY MARKER
  - GAS MANHOLE
  - SIGN
  - WETLAND FLAG

**Environmental Management**  
FEB 21 2017  
Office of Water Resources



**DEPARTMENT OF ENVIRONMENTAL MANAGEMENT**  
**OFFICE OF WATER RESOURCES**  
**FRESHWATER WETLANDS PROGRAM**  
APPROVED WITH CONDITIONS  
AS SPECIFIED IN THE LETTER OF APPROVAL  
**JUN 14 2017** FILE # **17-0037**  
**NO CHANGES ALLOWED WITHOUT PRIOR APPROVAL**  
**APPROVED PLANS MUST BE AT CONSTRUCTION SITE**

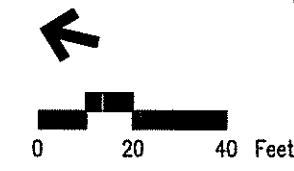
*Charles A. [Signature]*

**Algonquin Gas Transmission, LLC**  
**Dey Street Meter and Regulation Station**  
**Proposed Filter Installation Project**  
AP 505 Lot 3  
27 Dey Street  
East Providence, Rhode Island

No.	Revision	Date	Appr'd.

Designed by: \_\_\_\_\_ Checked by: \_\_\_\_\_  
Date: \_\_\_\_\_  
RIDEM Request for February 13, 2017  
Preliminary Determination  
Not Approved for Construction

**Property Line Plan**



**C-3**  
Sheet 3 of 4  
Project Number 11500.82

Saved Friday, February 03, 2017 3:47:55 PM DIMHITE Plotted Saturday, February 11, 2017 11:14:38 PM White, Dave



1 Cedar Street  
Suite 400  
Providence, RI 02903  
401.272.8100

**Notes**

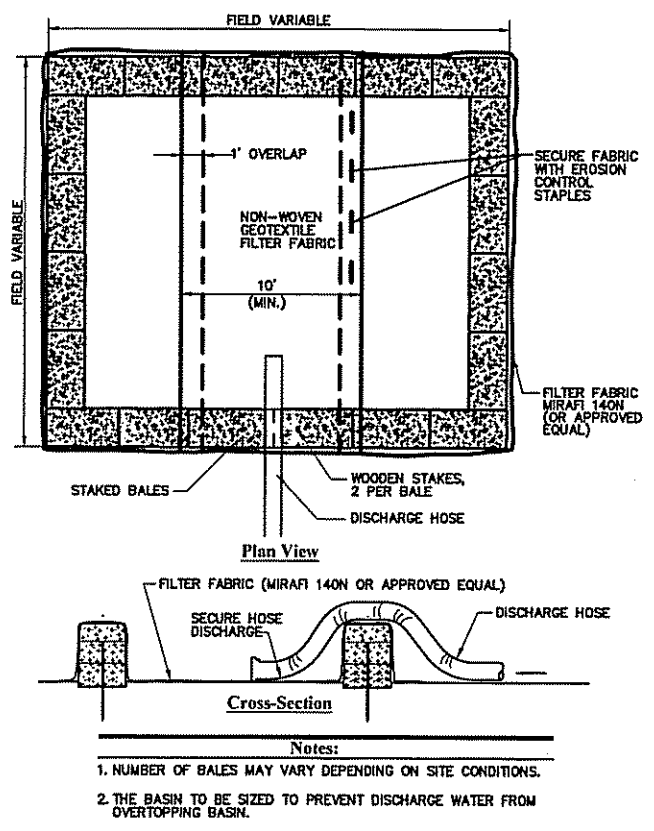
**EXISTING CONDITIONS INFORMATION:**

**REFERENCES:**

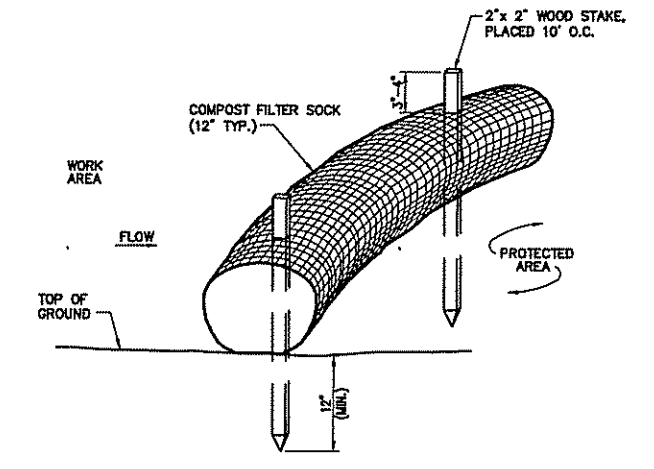
- EXISTING AND PROPOSED CONDITIONS OBTAINED FROM PLAN ENTITLED "DEY STREET M&R STATION FILTER DESIGN AND INSTALLATION ALGONQUIN GAS TRANSMISSION, LLC SITE PLAN" BY SPECTRA ENERGY PARTNERS, REV. A, DATED 2017.
- PLAN DRAWN TO SHOW THE ADDITION OF A PROPOSED FILTER SEPARATOR WITH TRUCK UNLOAD BOX AT THE ALGONQUIN GAS TRANSMISSION DEY STREET METER STATION.
- PROPERTY OWNED BY: PROVIDENCE GAS COMPANY/THE NARRAGANSETT ELECTRIC COMPANY
- SITE LOCATION: 27 DEY STREET, EAST PROVIDENCE, RI 02914
- THIS PLAN REFERENCES: DWG# GSYS-G-1001 DRAWING TITLED DEY STREET M&R STATION FILTER DESIGN AND INSTALLATION ALGONQUIN GAS TRANSMISSION, LLC EXISTING CONDITIONS PLAN. PREPARED BY NORTHSTAR INDUSTRIES, DATED NOVEMBER 4, 2016.
- PROJECT AREA IS LOCATED WITHIN ZONE AE (EL 21) AS DEPICTED ON FIRM FLOOD INSURANCE RATE MAP PROVIDENCE COUNTY, RHODE ISLAND, CITY OF EAST PROVIDENCE, COMMUNITY NUMBER 445398, PANEL NUMBER 44007C0328J, EFFECTIVE DATE OCTOBER 2, 2015.
- LOCATION OF UNDERGROUND UTILITIES ARE APPROXIMATE AND SHOULD BE VERIFIED IN THE FIELD BY THE CONTRACTOR PRIOR TO ANY CONSTRUCTION. PLEASE CALL DIG SAFE RHODE ISLAND @ 1(888)344-7233 OR 811.
- NEAREST STREET LOCATION: TAUNTON AVENUE (ROUTE 44) APPROXIMATELY 400 FEET SOUTH OF SITE.

**EROSION AND SEDIMENT CONTROL NOTES:**

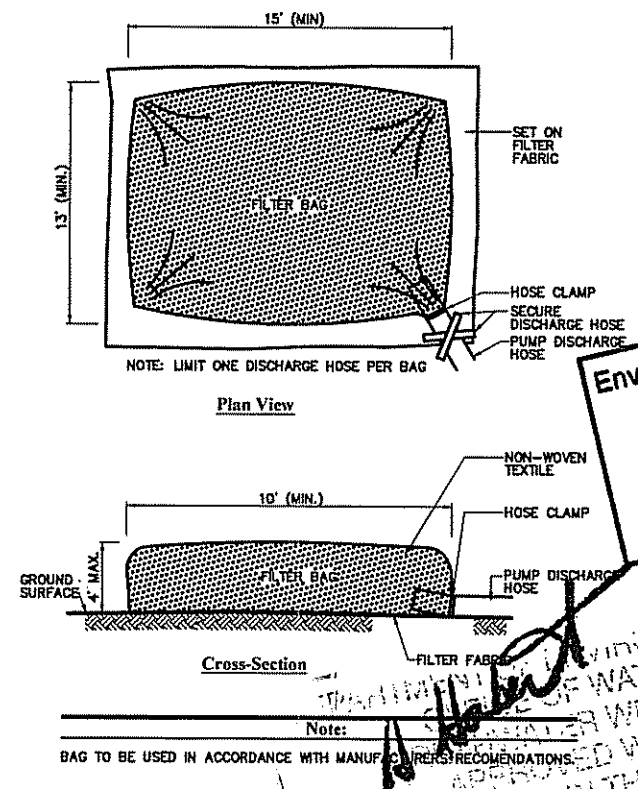
- PRIOR TO STARTING ANY SITE WORK, THE CONTRACTOR SHALL NOTIFY APPROPRIATE AGENCIES AND SHALL INSTALL EROSION CONTROL MEASURES AS SHOWN ON THE PLANS AND AS IDENTIFIED IN FEDERAL, STATE AND LOCAL APPROVAL DOCUMENTS PERTAINING TO THIS PROJECT.
- A SOIL EROSION AND SEDIMENTATION CONTROL PLAN HAS BEEN DESIGNED TO PROTECT ON-SITE WETLANDS AND WATERCOURSES AND OFF-SITE AREAS DURING AND AFTER CONSTRUCTION.
- IN AREAS WHERE HIGH RUNOFF VELOCITIES OR HIGH SEDIMENT LOADS ARE EXPECTED, COMPOST FILTER SOCK BARRIERS WILL BE BACKED WITH SILT FENCING.
- ONCE WORK IS COMPLETE, FINAL SURFACE TREATMENT CONSISTING OF CRUSHED STONE WILL BE APPLIED TO STABILIZE THE DISTURBED AREAS WITHIN THE STATION PERIMETER FENCE. ANY SOIL DISTURBANCE ASSOCIATED WITH EQUIPMENT ACCESS OR EXCAVATIONS SHOULD BE MULCHED WITH STRAW ON ALL DISTURBED AREAS AS SOON AS POSSIBLE BUT NOT MORE THAN 14 DAYS AFTER THE CONSTRUCTION ACTIVITY IN THAT AREA HAS TEMPORARILY OR PERMANENTLY CEASED.
- IN ACCORDANCE WITH THE RIDEMS GENERAL PERMIT, ALL STORMWATER CONTROL MEASURES, DISTURBED AREAS, AREAS USED FOR THE STORAGE OF MATERIALS THAT ARE EXPOSED TO PRECIPITATION (INCLUDING UNSTABILIZED SOIL STOCKPILES), DISCHARGE LOCATIONS AND LOCATIONS WHERE VEHICLES ENTER OR EXIT THE SITE, AS OUTLINED IN PART IV OF THIS PERMIT, MUST BE INSPECTED BY OR UNDER THE SUPERVISION OF THE APPLICANT AT LEAST ONCE EVERY SEVEN (7) CALENDAR DAYS AND WITHIN TWENTY-FOUR (24) HOURS AFTER ANY STORM EVENT WHICH GENERATES AT LEAST 0.25 INCHES OF RAINFALL PER TWENTY-FOUR (24) HOUR PERIOD AND/OR AFTER A SIGNIFICANT AMOUNT OF RUNOFF. SUCH AREAS SHALL BE INSPECTED FOR EVIDENCE OF, OR THE POTENTIAL FOR, POLLUTANTS ENTERING THE WATERS OF THE STATE OR A SEPARATE STORM SEWER SYSTEM. ALL BMPs SHALL BE MAINTAINED TO PREVENT UNCONTROLLED RELEASES OF MEASURABLE AMOUNTS OF SEDIMENT OR SEDIMENT LADEN WATER FROM TRAVELING BEYOND THE LIMITS OF DISTURBANCE.
- SEDIMENT SHALL BE REMOVED FROM BEHIND BARRIERS IF GREATER THAN 6 INCHES DEEP OR AS NEEDED.
- DAMAGED OR DETERIORATED EROSION/SEDIMENTATION CONTROL ITEMS WILL BE REPAIRED IMMEDIATELY AFTER IDENTIFICATION.
- EROSION CONTROL MEASURES SHALL REMAIN IN PLACE UNTIL ALL DISTURBED EARTH HAS BEEN SECURELY STABILIZED. ONCE THE SITE IS STABILIZED, THE COMPOST FILTER SOCK WILL BE REMOVED OR BROKEN UP AND SPREAD AS MULCH. ALL OTHER CONTROLS SHALL BE REMOVED AND PROPERLY DISPOSED OF BY THE CONTRACTOR.
- IN THE EVENT OF A FUEL SPILL OR EQUIPMENT MALFUNCTION RESULTING IN A RELEASE OF HAZARDOUS MATERIAL, ALL WORK WILL BE STOPPED IN THIS AREA UNTIL THE RELEASE/SPILL IS CLEANED UP.
- EQUIPMENT USED FOR CONSTRUCTION WILL BE PROPERLY MAINTAINED AND OPERATED TO REDUCE THE CHANCES OF SPILL OCCURRENCES OF PETROLEUM PRODUCTS. REFUELING OF EQUIPMENT WILL BE REQUIRED TO CARRY SPILL CONTAINMENT AND PREVENTION DEVICES (I.E., ABSORBENT PADS, CLEAN UP RAGS, FIVE GALLON CONTAINERS, ABSORBENT MATERIAL, ETC.) AT ALL TIMES. IN ADDITION, MAINTENANCE EQUIPMENT AND REPLACEMENT PARTS FOR CONSTRUCTION EQUIPMENT WILL BE ON HAND TO REPAIR FAILURES AND STOP A SPILL IN THE EVENT OF EQUIPMENT MALFUNCTION.
- ANY HAZARDOUS WASTE SPILLS SHALL BE CLEANED UP IMMEDIATELY, AND IF THE SPILL AMOUNT IS EQUAL TO OR EXCEEDS THE EPA REPORTABLE QUANTITY (RQ) FOR THAT SUBSTANCE IN ACCORDANCE WITH 40 CFR PARTS 1010, 117, OR 302, THE CONTRACTOR SHALL IMMEDIATELY CONTACT THE NATIONAL RESPONSE CENTER AT 1-800-424-8802. THE CONTRACTOR WILL ALSO BE RESPONSIBLE FOR SUBMITTING IN WRITING A DESCRIPTION OF THE RELEASE TO THE EPA REGIONAL OFFICE AND RIDEM PROVIDING THE DATE AND CIRCUMSTANCES OF THE RELEASE AND THE STEPS TO BE TAKEN TO PREVENT ANOTHER RELEASE. DIRECTIONS FOR CLEANING UP SPILLS SHALL BE CLEARLY POSTED AT A DESIGNATED ON-SITE LOCATION, AND CONSTRUCTION PERSONNEL SHALL BE MADE AWARE OF THE PROCEDURES AND LOCATION OF CLEANUP SUPPLIES. PERSONNEL SHALL WEAR APPROPRIATE PROTECTIVE GEAR AND HAVE PROPER TRAINING TO PREVENT INJURY FROM CONTACT WITH ANY HAZARDOUS SUBSTANCES.
- NO GRADE CHANGES ARE PROPOSED.



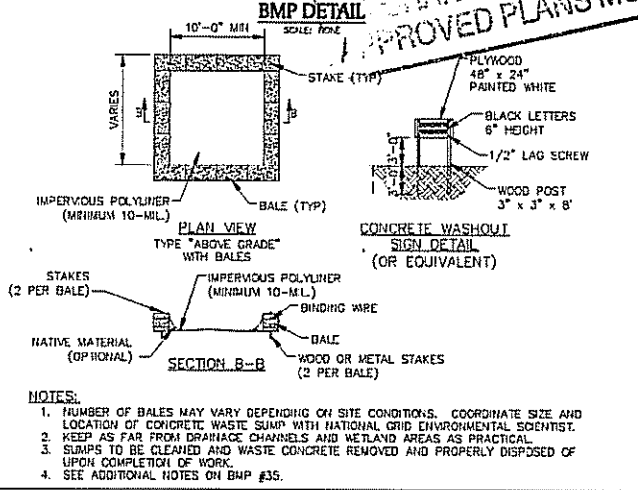
**Dewatering Straw Bale Basin** 2/17  
N.T.S. Source: VHB



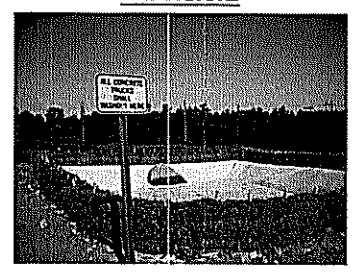
**Compost Filter Sock (CFS) - Erosion Control Barrier** 2/17  
N.T.S. Source: VHB



**Dewatering Filter Bag** 2/17  
N.T.S. Source: VHB



**Concrete Washout** 2/17  
N.T.S. Source: VHB



**Environmental Management**  
**FEB 22 2017**  
**Office of Water Resources**

*Handwritten notes:*  
APPROVED IN THE LETTER OF APPROVAL  
FILE # 17-0039  
CHANGES ALLOWED WITHOUT PRIOR APPROVAL  
APPROVED PLANS MUST BE AT CONSTRUCTION SITE

**Algonquin Gas Transmission, LLC  
Dey Street Meter and Regulation Station  
Proposed Filter Installation Project**

AP 505 Lot 3  
27 Dey Street  
East Providence, Rhode Island

Designed by: \_\_\_\_\_ Date: \_\_\_\_\_  
Checked by: \_\_\_\_\_ Date: \_\_\_\_\_  
Issued for: **RIDEM Request for Preliminary Determination Not Approved for Construction** February 13, 2017

**General Notes and Details**