

Plan Set

RIDEM Request for Preliminary
 Determination Application
 Date Issued: February 21, 2017

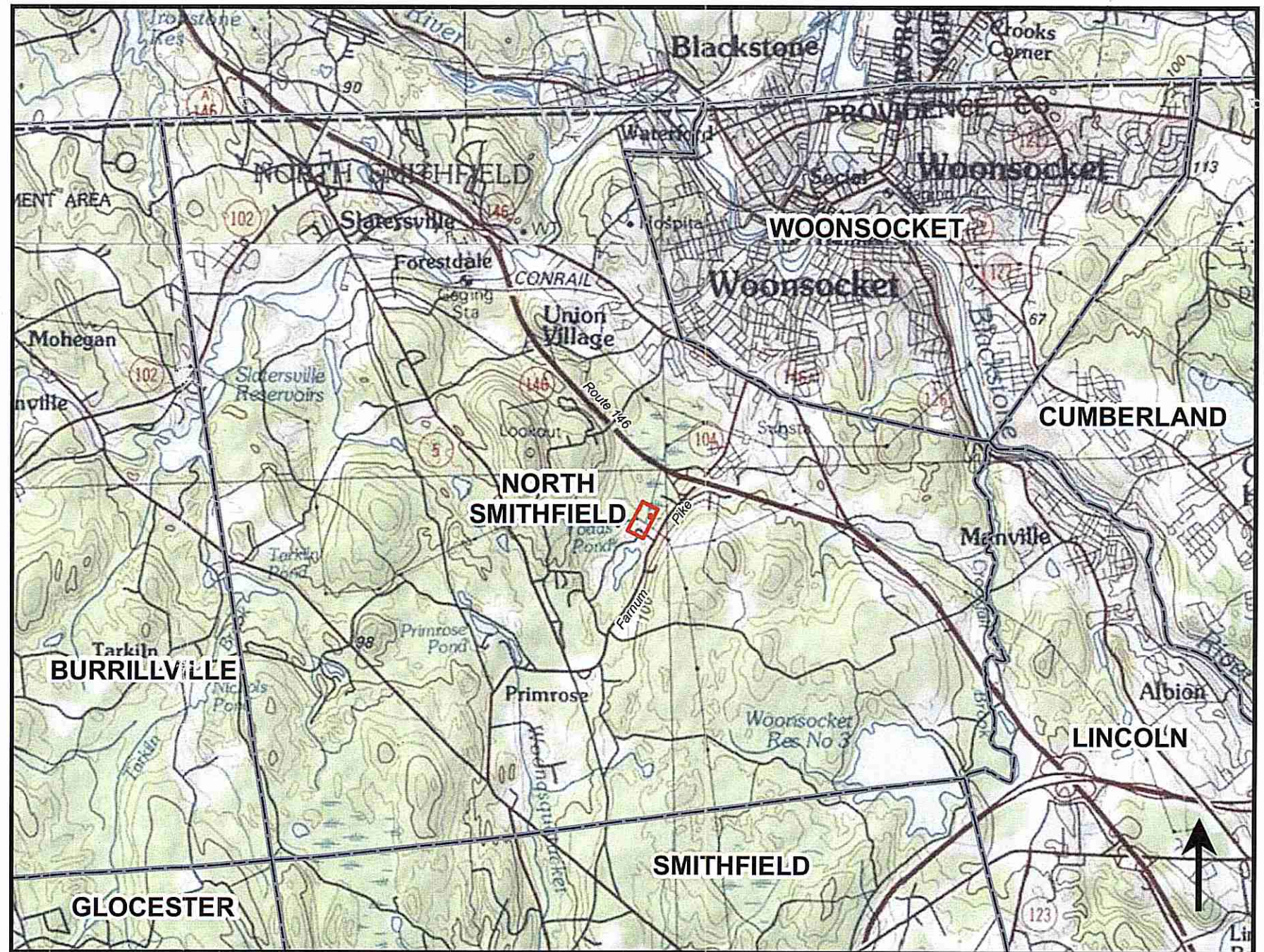
S-171N/T-172N 115kV Transmission Tap Line Maintenance Project

MAR 24 2017
 Office of Water Resources

North Smithfield, Rhode Island

Sheet Index

Number	Drawing Title	Latest Issue
1	Notes	2/21/2017
2	Plans	2/21/2017
3	Details	2/21/2017



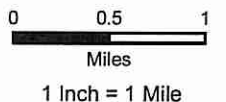
DEPARTMENT OF ENVIRONMENTAL MANAGEMENT
 OFFICE OF WATER RESOURCES
 FRESHWATER WETLANDS PROGRAM
 APPROVED WITH CONDITIONS
 AS SPECIFIED IN THE LETTER OF APPROVAL
 DATED MAY 5 2017 FILE # 17-0065
 NO CHANGES ALLOWED WITHOUT PRIOR APPROVAL
 APPROVED PLANS MUST BE AT CONSTRUCTION SITE

Charles A. Herbert

nationalgrid



Project Location Map



EXISTING CONDITIONS INFORMATION:

REFERENCES:

1. SUBTRANSMISSION LINE RIGHT-OF-WAY (ROW) LIMITS AND EASEMENT BOUNDARIES BASED ON THE FOLLOWING T-SHEETS PROVIDED BY THE NARRAGANSETT ELECTRIC COMPANY. ROW AND EASEMENT LINES ARE APPROXIMATE AND INTENDED TO BE A GRAPHICAL REPRESENTATION. THIS SHALL NOT BE CONSTRUED TO REPRESENT AN ACTUAL BOUNDARY SURVEY AND IS SUBJECT TO SUCH CHANGES AS AN ACCURATE BOUNDARY SURVEY MAY DISCLOSE.

T-SHEET NOS.:

T-1952-20, DATED: 3/1938, LAST REVISED: 1/28/2014;
T-1664-10 DATED: 11/14/1930, LAST REVISED: 6/30/2010;
T-3190-16 DATED: 12/27/1957, LAST REVISED: 4/9/2014;
T-5619-10 DATED: 6/20/1967, LAST REVISED: 4/9/2014;

2. WETLAND DELINEATION WAS PERFORMED BY VHB, PROVIDENCE OFFICE. FLAG LOCATIONS WERE LOCATED BY A GLOBAL POSITIONING SYSTEM (GPS) FIELD SURVEY CONDUCTED BY VHB IN OCTOBER 2016. THIS SURVEY CONFORMS TO A CLASS IV STANDARD AS DEFINED IN THE PROCEDURAL AND TECHNICAL STANDARDS FOR PERFORMING LAND SURVEYING IN THE STATE OF RHODE ISLAND AND PROVIDENCE PLANTATIONS.

3. NEAREST STREET INTERSECTION IS WITH OLD GREENVILLE ROAD APPROXIMATELY 1,700 FEET NORTHEAST OF THE SITE.

EROSION AND SEDIMENT CONTROL NOTES:

1. PRIOR TO STARTING ANY SITE WORK, THE CONTRACTOR SHALL NOTIFY APPROPRIATE AGENCIES AND SHALL INSTALL EROSION CONTROL MEASURES AS SHOWN ON THE PLANS AND AS IDENTIFIED IN FEDERAL, STATE AND LOCAL APPROVAL DOCUMENTS PERTAINING TO THIS PROJECT.

2. A SOIL EROSION AND SEDIMENTATION CONTROL PLAN HAS BEEN DESIGNED TO PROTECT ON-SITE WETLANDS AND WATERCOURSES AND OFF-SITE AREAS DURING AND AFTER CONSTRUCTION. IN AREAS WHERE ACCESS TO POLE STRUCTURES IS THROUGH OR WITHIN WETLAND AREAS, TEMPORARY SWAMP MATS WILL BE PLACED.

3. IN AREAS WHERE HIGH RUNOFF VELOCITIES OR HIGH SEDIMENT LOADS ARE EXPECTED, TWO LINES OF COMPOST FILTER SOCKS WILL BE INSTALLED BACK TO BACK.

4. TYPICAL CRUSHED-STONE CONSTRUCTION ENTRANCE/EXITS WILL BE CONSTRUCTED AT EACH STREET ACCESS POINT WITHIN THE PROJECT AREA.

5. ONCE WORK IS COMPLETE, FINAL SURFACE TREATMENT CONSISTING OF STRAW OR CELLULOSE MULCH WILL BE APPLIED TO STABILIZE THE DISTURBED AREAS. ANY SOIL DISTURBANCE ASSOCIATED WITH EQUIPMENT ACCESS TO STRUCTURES OR STRUCTURE EXCAVATIONS SHOULD BE MULCHED WITH STRAW ON ALL DISTURBED AREAS AS SOON AS POSSIBLE BUT NOT MORE THAN 14 DAYS AFTER THE CONSTRUCTION ACTIVITY IN THAT AREA HAS TEMPORARILY OR PERMANENTLY CEASED.

6. IN ACCORDANCE WITH THE RIPDES GENERAL PERMIT, ALL STORMWATER CONTROL MEASURES, DISTURBED AREAS, AREAS USED FOR THE STORAGE OF MATERIALS THAT ARE EXPOSED TO PRECIPITATION (INCLUDING UNSTABILIZED SOIL STOCKPILES), DISCHARGE LOCATIONS AND LOCATIONS WHERE VEHICLES ENTER OR EXIT THE SITE, AS OUTLINED IN PART IV OF THIS PERMIT, MUST BE INSPECTED BY OR UNDER THE SUPERVISION OF THE APPLICANT AT LEAST ONCE EVERY SEVEN (7) CALENDAR DAYS AND WITHIN TWENTY-FOUR (24) HOURS AFTER ANY STORM EVENT WHICH GENERATES AT LEAST 0.25 INCHES OF RAINFALL PER TWENTY-FOUR (24) HOUR PERIOD AND/OR AFTER A SIGNIFICANT AMOUNT OF RUNOFF. SUCH AREAS SHALL BE INSPECTED FOR EVIDENCE OF, OR THE POTENTIAL FOR, POLLUTANTS ENTERING THE WATERS OF THE STATE OR A SEPARATE STORM SEWER SYSTEM. ALL BMPs SHALL BE MAINTAINED TO PREVENT UNCONTROLLED RELEASES OF MEASURABLE AMOUNTS OF SEDIMENT OR SEDIMENT LADEN WATER FROM TRAVELING BEYOND THE LIMITS OF DISTURBANCE.

7. SEDIMENT SHALL BE REMOVED FROM BEHIND BARRIERS IF GREATER THAN 6 INCHES DEEP OR AS NEEDED.

8. DAMAGED OR DETERIORATED EROSION/SEDIMENTATION CONTROL ITEMS WILL BE REPAIRED IMMEDIATELY AFTER IDENTIFICATION.

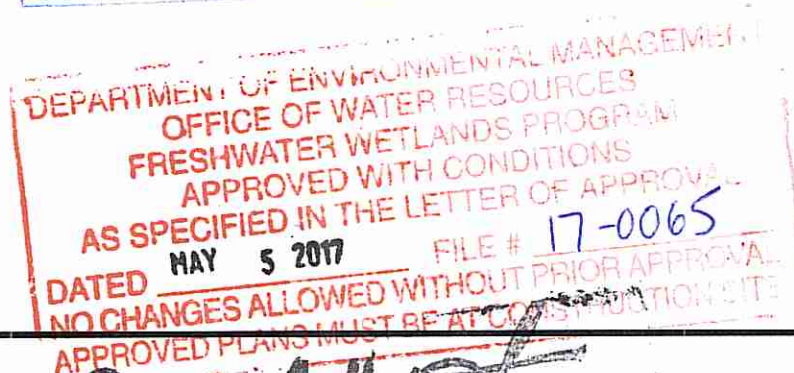
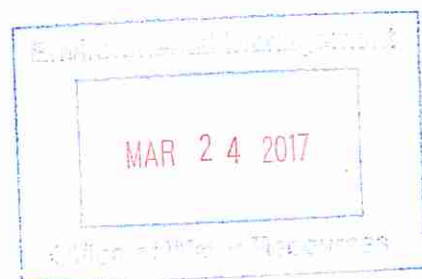
9. EROSION CONTROL MEASURES SHALL REMAIN IN PLACE UNTIL ALL DISTURBED EARTH HAS BEEN SECURELY STABILIZED. ONCE THE SITE IS STABILIZED, THE STRAW BALES WILL BE REMOVED OR BROKEN UP AND SPREAD AS MULCH. ALL OTHER CONTROLS SHALL BE REMOVED AND PROPERLY DISPOSED OF BY THE CONTRACTOR.

10. IN THE EVENT OF A FUEL SPILL OR EQUIPMENT MALFUNCTION RESULTING IN A RELEASE OF HAZARDOUS MATERIAL, ALL WORK WILL BE STOPPED IN THIS AREA UNTIL THE RELEASE/SPILL IS CLEANED UP.

11. EQUIPMENT USED FOR CONSTRUCTION WILL BE PROPERLY MAINTAINED AND OPERATED TO REDUCE THE CHANCES OF SPILL OCCURRENCES OF PETROLEUM PRODUCTS. REFUELING OF EQUIPMENT WILL BE REQUIRED TO CARRY SPILL CONTAINMENT AND PREVENTION DEVICES (I.E., ABSORBENT PADS, CLEAN UP RAGS, FIVE GALLON CONTAINERS, ABSORBENT MATERIAL, ETC.) AT ALL TIMES. IN ADDITION, MAINTENANCE EQUIPMENT AND REPLACEMENT PARTS FOR CONSTRUCTION EQUIPMENT WILL BE ON HAND TO REPAIR FAILURES AND STOP A SPILL IN THE EVENT OF EQUIPMENT MALFUNCTION.

12. ANY HAZARDOUS WASTE SPILLS SHALL BE CLEANED UP IMMEDIATELY, AND IF THE SPILL AMOUNT IS EQUAL TO OR EXCEEDS THE EPA REPORTABLE QUANTITY (RQ) FOR THAT SUBSTANCE IN ACCORDANCE WITH 40 CFR PARTS 1010, 117, OR 302, THE CONTRACTOR SHALL IMMEDIATELY CONTACT THE NATIONAL RESPONSE CENTER AT 1-800-424-8802. THE CONTRACTOR WILL ALSO BE RESPONSIBLE FOR SUBMITTING IN WRITING A DESCRIPTION OF THE RELEASE TO THE EPA REGIONAL OFFICE AND RIDEM PROVIDING THE DATE AND CIRCUMSTANCES OF THE RELEASE AND THE STEPS TO BE TAKEN TO PREVENT ANOTHER RELEASE. DIRECTIONS FOR CLEANING UP SPILLS SHALL BE CLEARLY POSTED AT A DESIGNATED ON-SITE LOCATION, AND CONSTRUCTION PERSONNEL SHALL BE MADE AWARE OF THE PROCEDURES AND LOCATION OF CLEANUP SUPPLIES. PERSONNEL SHALL WEAR APPROPRIATE PROTECTIVE GEAR AND HAVE PROPER TRAINING TO PREVENT INJURY FROM CONTACT WITH ANY HAZARDOUS SUBSTANCES.

13. NO GRADE CHANGES ARE PROPOSED.



Charles A. Herbert

Not to Scale

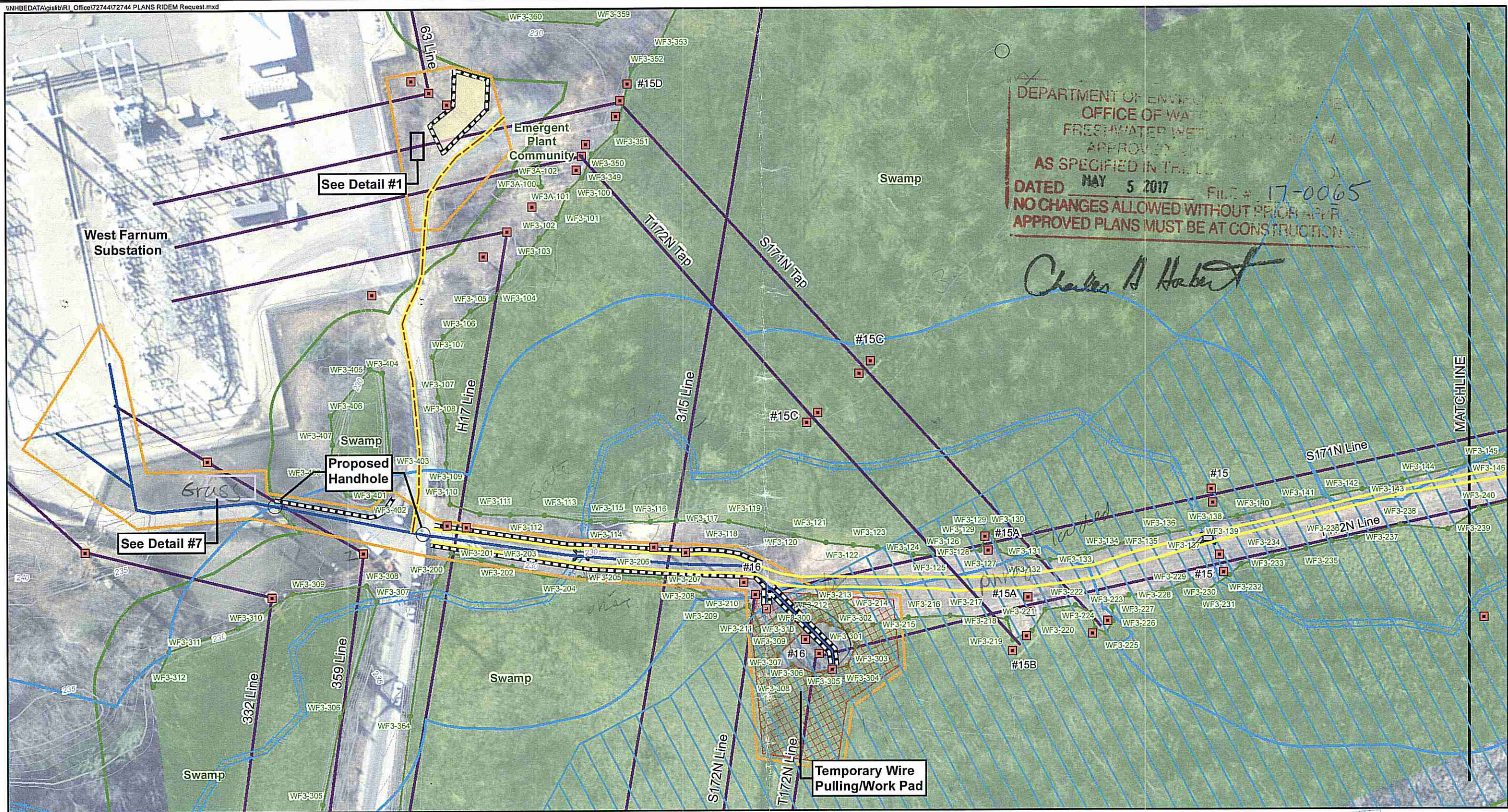
**S171N/T172N 115KV TRANSMISSION TAP LINE
MAINTENANCE PROJECT
NORTH SMITHFIELD, RHODE ISLAND
ACCESS AND BMP PLANS**

Sheet 1 of 3

Source: VHB, RIGIS

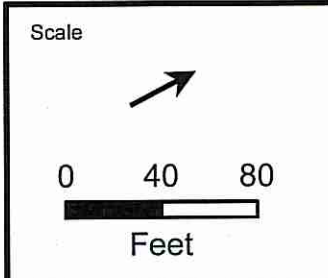
nationalgrid





DEPARTMENT OF ENVIRONMENTAL MANAGEMENT
 OFFICE OF WATER RESOURCES
 FRESHWATER WETLANDS
 APPROVAL
 AS SPECIFIED IN THE L.P.
 DATED MAY 5 2017 FILE # 17-0065
 NO CHANGES ALLOWED WITHOUT PRIOR WRITTEN
 APPROVAL APPROVED PLANS MUST BE AT CONSTRUCTION

Charles A. Haber



Legend

Access Route	Limit of Disturbance
Existing Gravel Access Road	Watercourse
Existing Structure	Wetlands
Proposed Swamp Mats	50-foot Perimeter Wetland
Proposed Compost Filter Sock	100-foot Riverbank Wetland
Proposed Ductbank	Delineated Wetland Edge
Stockpile Area	Wetland Flag
Temporary Concrete Washout	100-Year Floodplain (FEMA)
Temporary Dewatering Basin	Existing Culvert

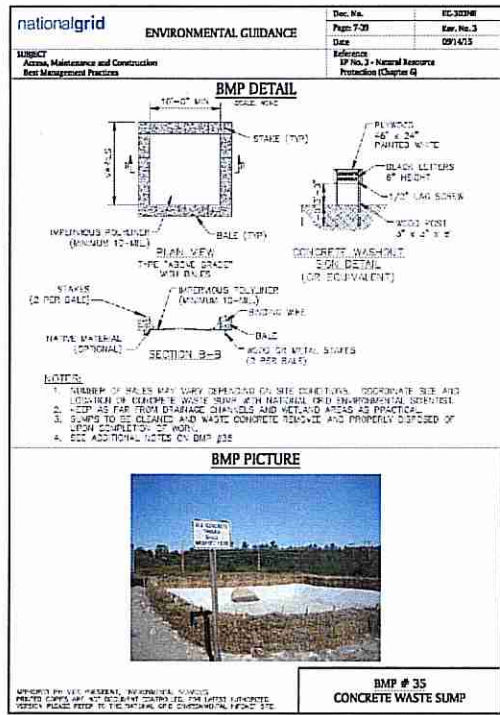
**S171N/T172N 115KV TRANSMISSION TAP LINE
 MAINTENANCE PROJECT
 NORTH SMITHFIELD, RHODE ISLAND**

Plans
 Sheet 2 of 3

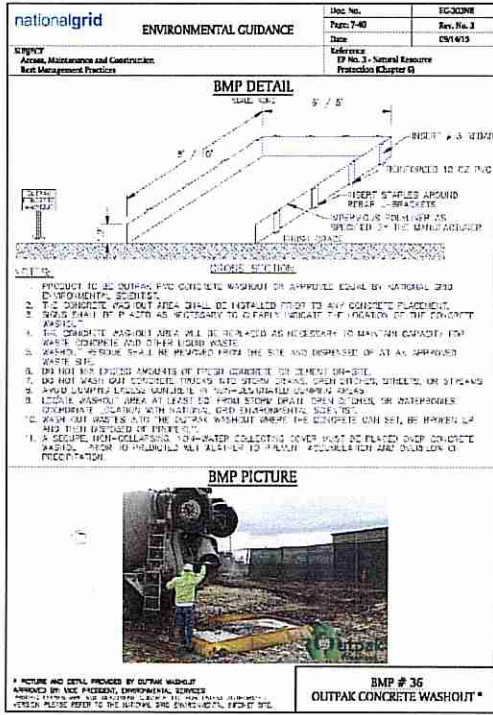
MAR 24 2017
 Office of Water Resources

Source:
 NGRID (October 2014)
 VHB GPS Located Rare Plant
 Species (October 2014)

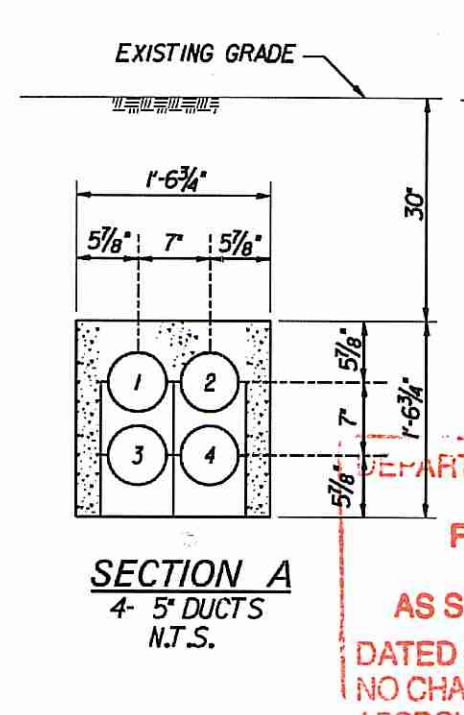
nationalgrid
vhb



Detail #1

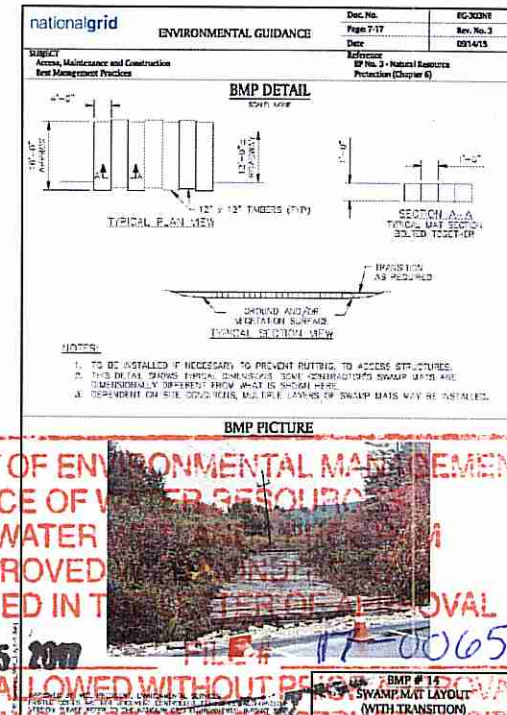


Detail #2

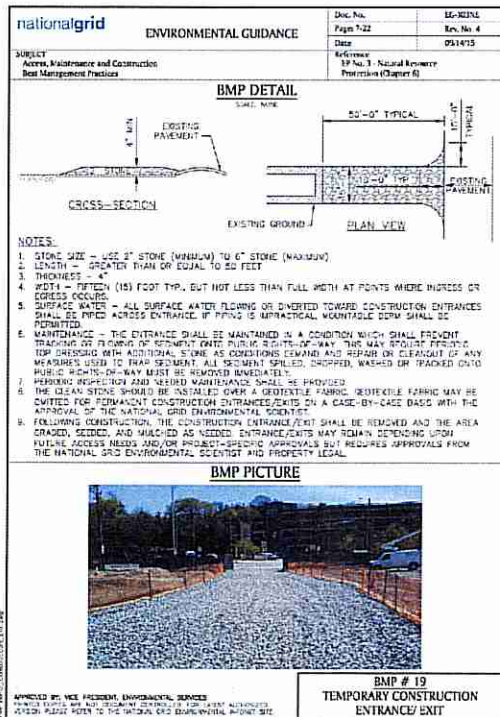


DEPARTMENT OF ENVIRONMENTAL MANAGEMENT
OFFICE OF WATER RESOURCES
FRESHWATER
APPROVED
AS SPECIFIED IN THE
TERMS AND CONDITIONS OF THE PERMIT
DATED MAY 5, 2017
NO CHANGES ALLOWED WITHOUT PERMIT
APPROVED PLANS MUST BE AT CONSTRUCTION SITE

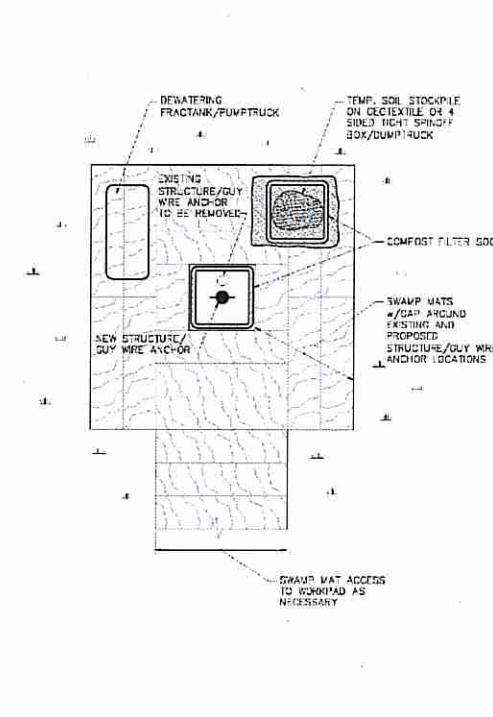
Charles A. Haber



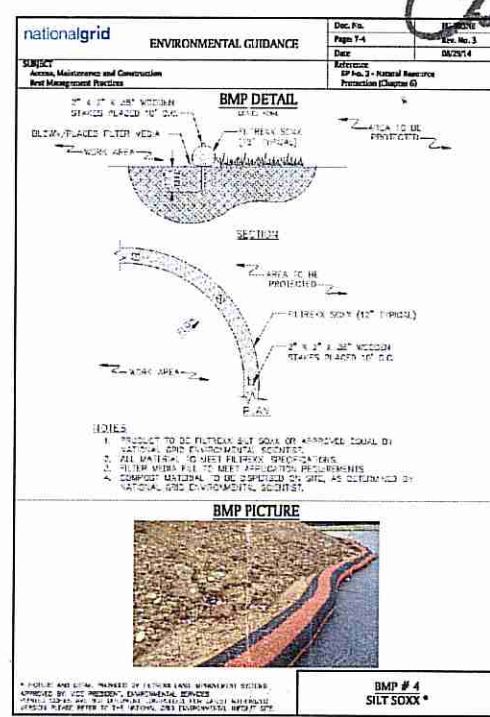
Detail #3



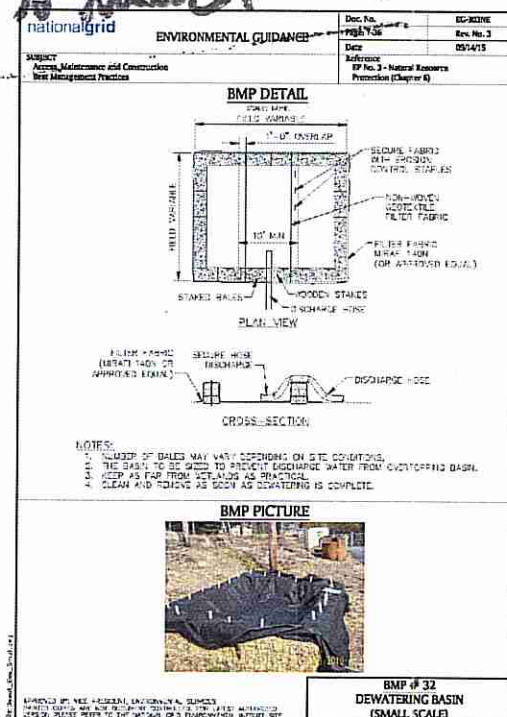
Detail #4



Detail #5



Detail #6



Detail #7

**S171N/T172N 115KV TRANSMISSION TAP LINE
MAINTENANCE PROJECT
NORTH SMITHFIELD, RHODE ISLAND**

Details
Sheet 3 of 3

MAR 24 2017
Office of Water Resources

Not to Scale

Source:

