

Plan Set

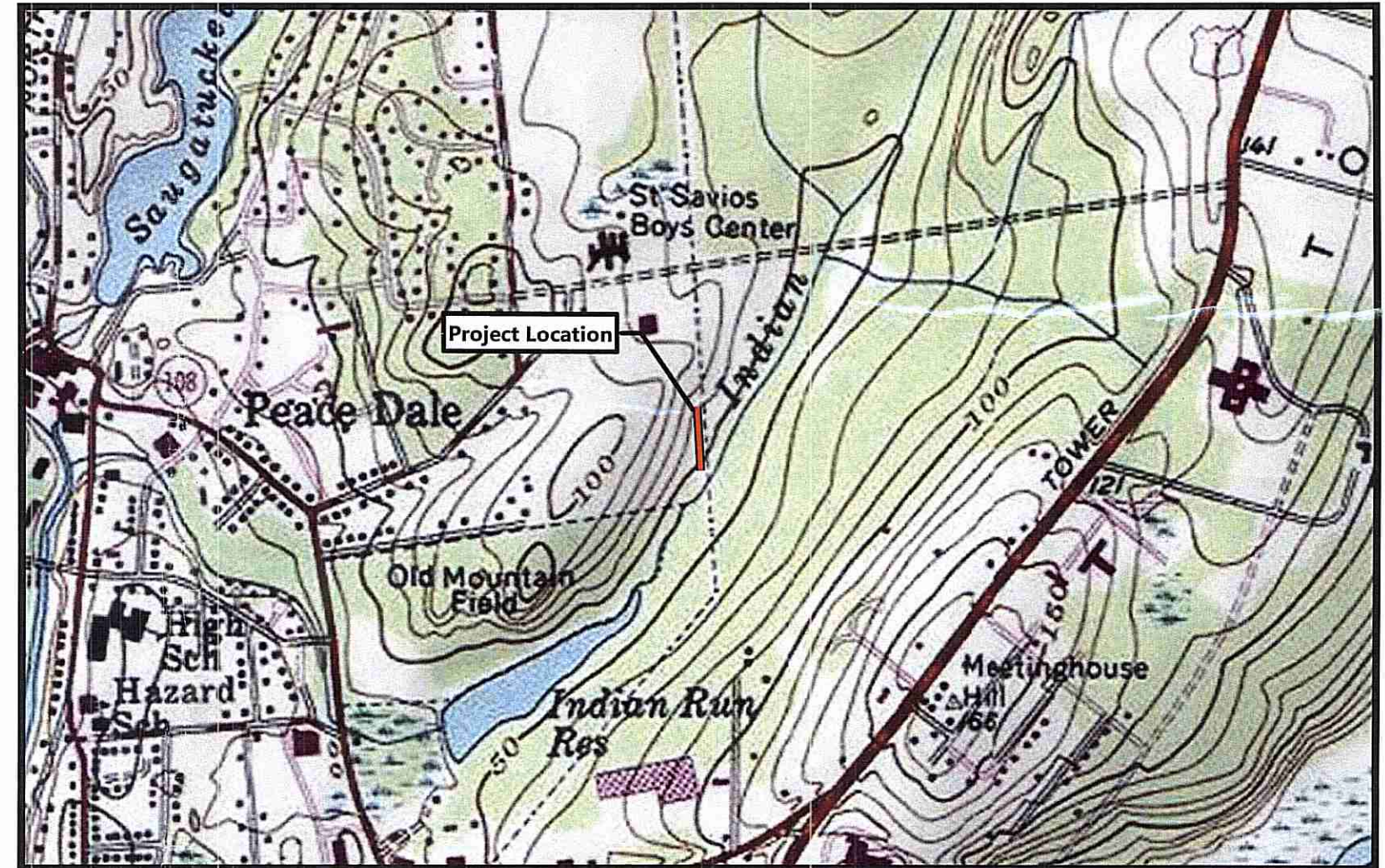
RIDEM Request for Preliminary
Determination Application Date
Issued: 05/01/2017

3308 34.5kV Subtransmission Line Asset Refurbishment Project - Proposed New Utility Poles

St. Dominic Road, South Kingstown, Rhode Island

Sheet Index

Number	Drawing Title	Latest Issue
1	Notes	05/01/2017
2	Access and BMP Plan	05/01/2017
3	Detail Sheet	05/01/2017



Site Location Map

nationalgrid



↑
0 1,000 2,000 Feet

James H. Hackett
DEPARTMENT OF ENVIRONMENTAL MANAGEMENT
OFFICE OF WATER RESOURCES
FRESHWATER WETLANDS PROGRAM
APPROVED WITH CONDITIONS
AS SPECIFIED IN THE LETTER OF APPROVAL
DATED SEP 12 2017 FILE # 17-0105
NO CHANGES ALLOWED WITHOUT PRIOR APPROVAL
APPROVED PLANS MUST BE AT CONSTRUCTION SITE

MAY 5

EXISTING CONDITIONS INFORMATION:

REFERENCES:

1. SUBTRANSMISSION LINE RIGHT-OF-WAY (ROW) LIMITS AND EASEMENT BOUNDARIES BASED ON THE FOLLOWING T-SHEETS PROVIDED BY THE NARRAGANSETT ELECTRIC COMPANY. ROW AND EASEMENT LINES ARE APPROXIMATE AND INTENDED TO BE A GRAPHICAL REPRESENTATION. THIS SHALL NOT BE CONSTRUED TO REPRESENT AN ACTUAL BOUNDARY SURVEY AND IS SUBJECT TO SUCH CHANGES AS AN ACCURATE BOUNDARY SURVEY MAY DISCLOSE.
T-SHEET NOS.:
T-1423-5, DATED: MAY 24, 1929, LAST REVISED: 10/17/97.

2. WETLAND DELINEATION WAS PERFORMED BY VHB, PROVIDENCE OFFICE. FLAG LOCATIONS WERE LOCATED BY A GLOBAL POSITIONING SYSTEM (GPS) FIELD SURVEY CONDUCTED BY VHB BETWEEN MARCH AND MAY 2016. THIS SURVEY CONFORMS TO A CLASS IV STANDARD AS DEFINED IN THE PROCEDURAL AND TECHNICAL STANDARDS FOR PERFORMING LAND SURVEYING IN THE STATE OF RHODE ISLAND AND PROVIDENCE PLANTATIONS.

3. NEAREST STREET INTERSECTION IS WITH BROADROCK ROAD APPROXIMATELY 1,500 FEET NORTHWEST OF THE SITE.

EROSION AND SEDIMENT CONTROL NOTES:

1. PRIOR TO STARTING ANY SITE WORK, THE CONTRACTOR SHALL NOTIFY APPROPRIATE AGENCIES AND SHALL INSTALL EROSION CONTROL MEASURES AS SHOWN ON THE PLANS AND AS IDENTIFIED IN FEDERAL, STATE AND LOCAL APPROVAL DOCUMENTS PERTAINING TO THIS PROJECT.

2. A SOIL EROSION AND SEDIMENTATION CONTROL PLAN HAS BEEN DESIGNED TO PROTECT ON-SITE WETLANDS AND WATERCOURSES AND OFF-SITE AREAS DURING AND AFTER CONSTRUCTION. IN AREAS WHERE ACCESS TO POLE STRUCTURES IS THROUGH OR WITHIN WETLAND AREAS, TEMPORARY SWAMP MATS WILL BE PLACED.

3. IN AREAS WHERE HIGH RUNOFF VELOCITIES OR HIGH SEDIMENT LOADS ARE EXPECTED, TWO LINES OF STRAW WATTLES WILL BE INSTALLED BACK TO BACK.

4. TYPICAL CRUSHED-STONE CONSTRUCTION ENTRANCE/EXITS WILL BE CONSTRUCTED AT EACH STREET ACCESS POINT WITHIN THE PROJECT AREA.

5. ONCE WORK IS COMPLETE, FINAL SURFACE TREATMENT CONSISTING OF STRAW OR CELLULOSE MULCH WILL BE APPLIED TO STABILIZE THE DISTURBED AREAS. ANY SOIL DISTURBANCE ASSOCIATED WITH EQUIPMENT ACCESS TO STRUCTURES OR STRUCTURE EXCAVATIONS SHOULD BE MULCHED WITH STRAW ON ALL DISTURBED AREAS AS SOON AS POSSIBLE BUT NOT MORE THAN 14 DAYS AFTER THE CONSTRUCTION ACTIVITY IN THAT AREA HAS TEMPORARILY OR PERMANENTLY CEASED.

6. IN ACCORDANCE WITH THE RIPDES GENERAL PERMIT, ALL STORMWATER CONTROL MEASURES, DISTURBED AREAS, AREAS USED FOR THE STORAGE OF MATERIALS THAT ARE EXPOSED TO PRECIPITATION (INCLUDING UNSTABILIZED SOIL STOCKPILES), DISCHARGE LOCATIONS AND LOCATIONS WHERE VEHICLES ENTER OR EXIT THE SITE, AS OUTLINED IN PART IV OF THIS PERMIT, MUST BE INSPECTED BY OR UNDER THE SUPERVISION OF THE APPLICANT AT LEAST ONCE EVERY SEVEN (7) CALENDAR DAYS AND WITHIN TWENTY-FOUR (24) HOURS AFTER ANY STORM EVENT WHICH GENERATES AT LEAST 0.25 INCHES OF RAINFALL PER TWENTY-FOUR (24) HOUR PERIOD AND/OR AFTER A SIGNIFICANT AMOUNT OF RUNOFF. SUCH AREAS SHALL BE INSPECTED FOR EVIDENCE OF, OR THE POTENTIAL FOR, POLLUTANTS ENTERING THE WATERS OF THE STATE OR A SEPARATE STORM SEWER SYSTEM. ALL BMPs SHALL BE MAINTAINED TO PREVENT UNCONTROLLED RELEASES OF MEASURABLE AMOUNTS OF SEDIMENT OR SEDIMENT LADEN WATER FROM TRAVELING BEYOND THE LIMITS OF DISTURBANCE.

7. SEDIMENT SHALL BE REMOVED FROM BEHIND BARRIERS IF GREATER THAN 6 INCHES DEEP OR AS NEEDED.

8. DAMAGED OR DETERIORATED EROSION/SEDIMENTATION CONTROL ITEMS WILL BE REPAIRED IMMEDIATELY AFTER IDENTIFICATION.

9. EROSION CONTROL MEASURES SHALL REMAIN IN PLACE UNTIL ALL DISTURBED EARTH HAS BEEN SECURELY STABILIZED. ONCE THE SITE IS STABILIZED, THE STRAW BALES WILL BE REMOVED OR BROKEN UP AND SPREAD AS MULCH. ALL OTHER CONTROLS SHALL BE REMOVED AND PROPERLY DISPOSED OF BY THE CONTRACTOR.

10. IN THE EVENT OF A FUEL SPILL OR EQUIPMENT MALFUNCTION RESULTING IN A RELEASE OF HAZARDOUS MATERIAL, ALL WORK WILL BE STOPPED IN THIS AREA UNTIL THE RELEASE/SPILL IS CLEANED UP.

11. EQUIPMENT USED FOR CONSTRUCTION WILL BE PROPERLY MAINTAINED AND OPERATED TO REDUCE THE CHANCES OF SPILL OCCURRENCES OF PETROLEUM PRODUCTS. REFUELING OF EQUIPMENT WILL BE REQUIRED TO CARRY SPILL CONTAINMENT AND PREVENTION DEVICES (I.E., ABSORBENT PADS, CLEAN UP RAGS, FIVE GALLON CONTAINERS, ABSORBENT MATERIAL, ETC.) AT ALL TIMES. IN ADDITION, MAINTENANCE EQUIPMENT AND REPLACEMENT PARTS FOR CONSTRUCTION EQUIPMENT WILL BE ON HAND TO REPAIR FAILURES AND STOP A SPILL IN THE EVENT OF EQUIPMENT MALFUNCTION.

12. ANY HAZARDOUS WASTE SPILLS SHALL BE CLEANED UP IMMEDIATELY, AND IF THE SPILL AMOUNT IS EQUAL TO OR EXCEEDS THE EPA REPORTABLE QUANTITY (RQ) FOR THAT SUBSTANCE IN ACCORDANCE WITH 40 CFR PARTS 1010, 117, OR 302, THE CONTRACTOR SHALL IMMEDIATELY CONTACT THE NATIONAL RESPONSE CENTER AT 1-800-424-8802. THE CONTRACTOR WILL ALSO BE RESPONSIBLE FOR SUBMITTING IN WRITING A DESCRIPTION OF THE RELEASE TO THE EPA REGIONAL OFFICE AND RIDEM PROVIDING THE DATE AND CIRCUMSTANCES OF THE RELEASE AND THE STEPS TO BE TAKEN TO PREVENT ANOTHER RELEASE. DIRECTIONS FOR CLEANING UP SPILLS SHALL BE CLEARLY POSTED AT A DESIGNATED ON-SITE LOCATION, AND CONSTRUCTION PERSONNEL SHALL BE MADE AWARE OF THE PROCEDURES AND LOCATION OF CLEANUP SUPPLIES. PERSONNEL SHALL WEAR APPROPRIATE PROTECTIVE GEAR AND HAVE PROPER TRAINING TO PREVENT INJURY FROM CONTACT WITH ANY HAZARDOUS SUBSTANCES.

13. NO GRADE CHANGES ARE PROPOSED.

Not to Scale

James H. Herbert
3308 34.5kV Subtransmission Line
Asset Refurbishment Project
Proposed New-Utility Poles
St. Dominic Road, South Kingstown, Rhode Island

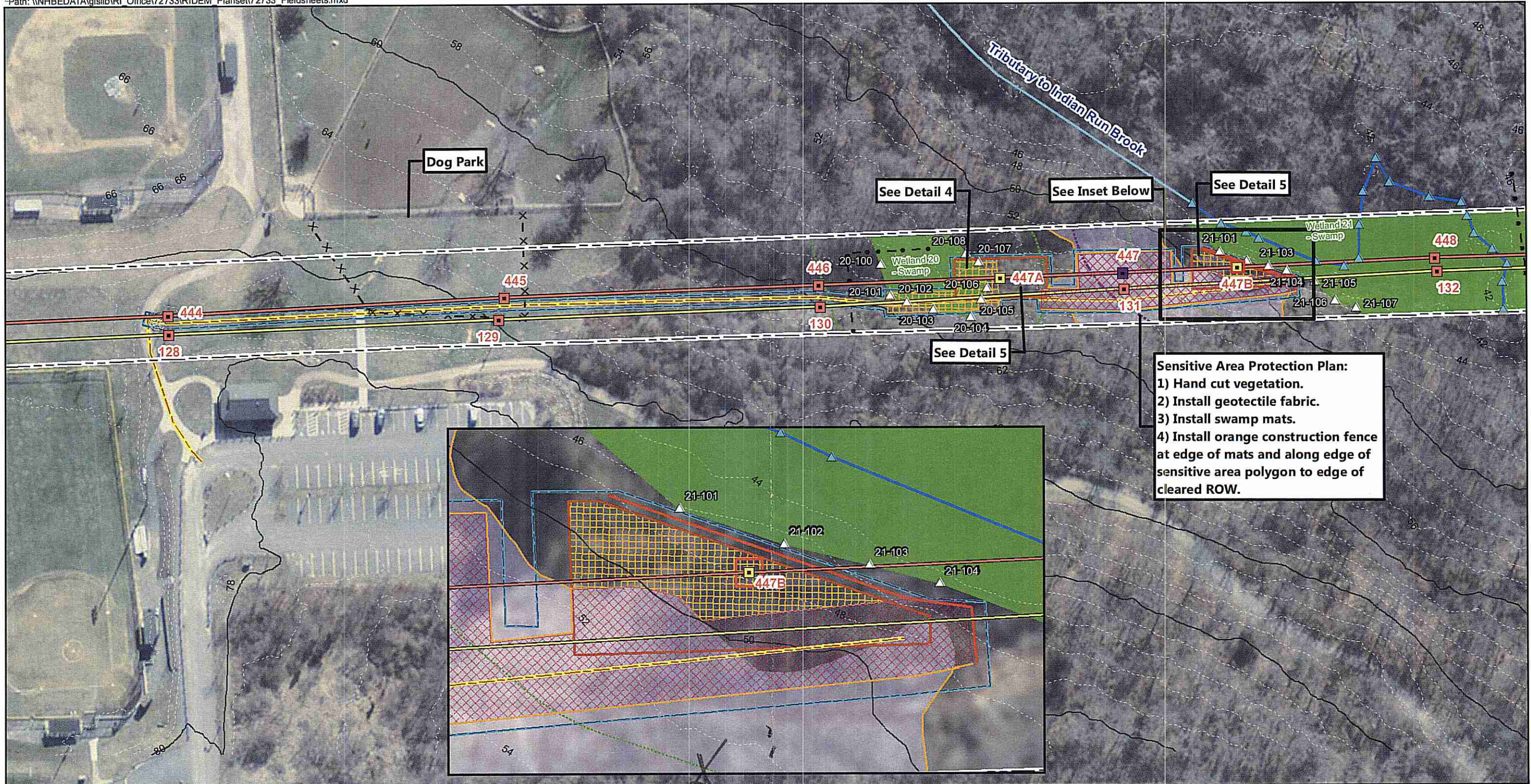
Notes
Sheet 1 of 3

ENVIRONMENTAL MANAGEMENT
WATER RESOURCES
WETLANDS PROGRAM
CONSTRUCTION CONDITIONS
LETTER OF APPROVAL
17-0105
PRIOR APPROVAL
CONSTRUCTION SITE

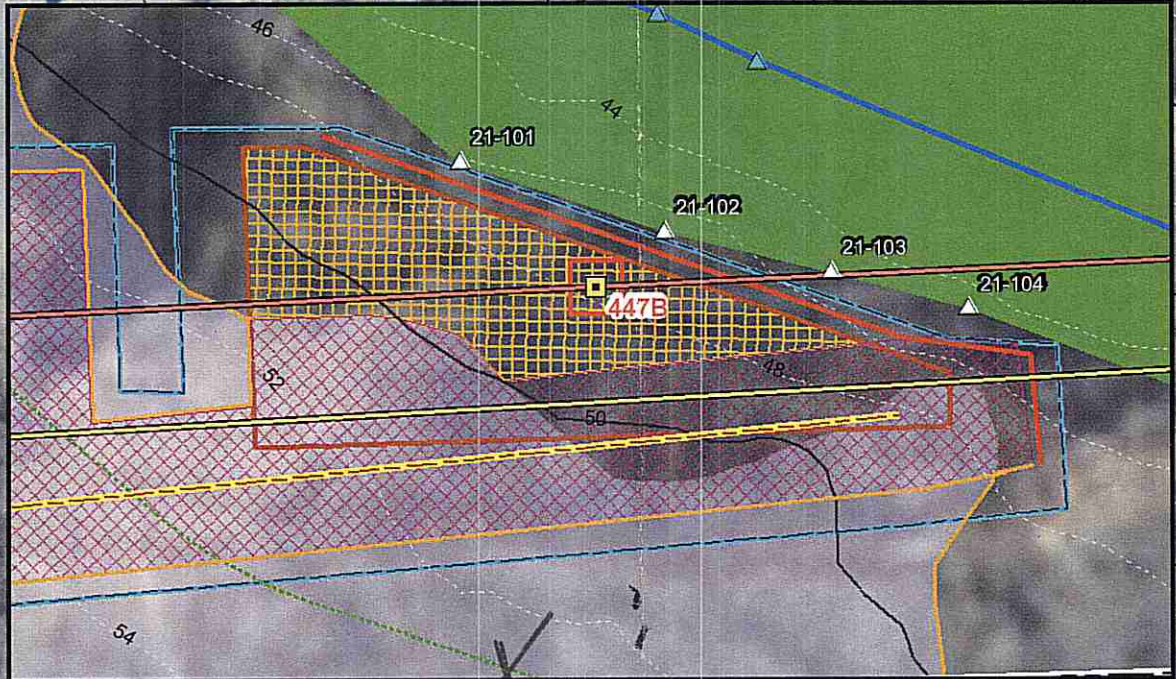
Source: VHB, RIGIS, NGRID

nationalgrid





Sensitive Area Protection Plan:
 1) Hand cut vegetation.
 2) Install geotextile fabric.
 3) Install swamp mats.
 4) Install orange construction fence at edge of mats and along edge of sensitive area polygon to edge of cleared ROW.



Existing Structures	Line 3308	Stone Wall	Wetland Flag
Existing Structure to be Removed	Line 3307	Fence	Streambank Flag
Proposed New Structure	50-foot Perimeter Wetland	Delineated Wetland Edge	Delineated Streambank
Access Route	100-foot Riverbank Wetland	Delineated Streambank	Approximate Stream Centerline
Approximate ROW	Sensitive Area	Approximate Stream Centerline	Wetland Resource Area
Approximate Property Line	Work/ Wire Pull Pad	Swamp Mat Access Pad/ Sensitive Area	Limit of Disturbance
	Straw Wattle	Stone Apron	

Environmental Management
AUG 23 2017
 Office of Water Resources

SEP 12 2017
 FILE # 17-0105
 APPROVED PLANS MUST BE AT CONSTRUCTION

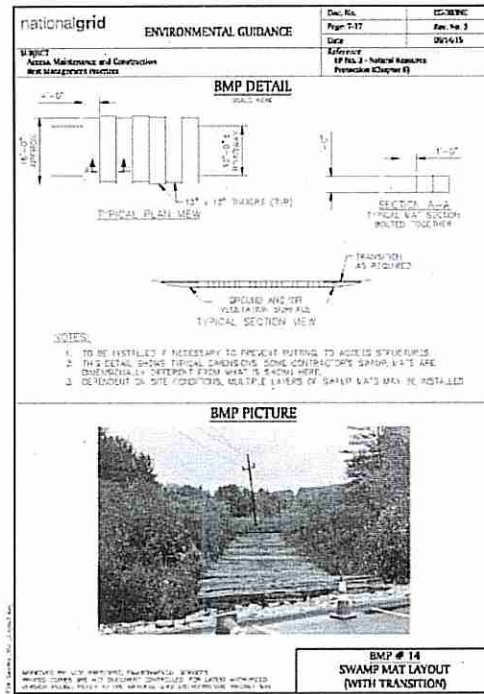
**3308 34.5kV Subtransmission Line
 Asset Refurbishment Project
 Proposed New Utility Poles
 St. Dominic Road, South Kingstown, Rhode Island
 Access and BMP Plan
 Sheet 2 of 3**

1 Inch = 78 Feet
 0 37.5 75 150 Feet

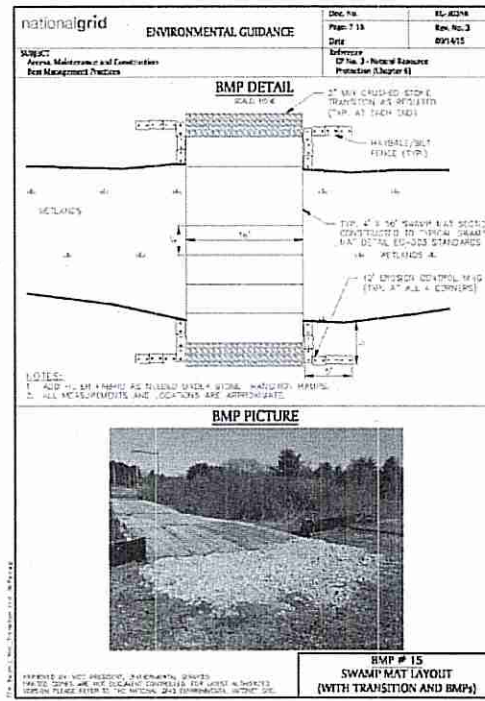
RIDEM Comments:
 Revised 8/22/2017

nationalgrid

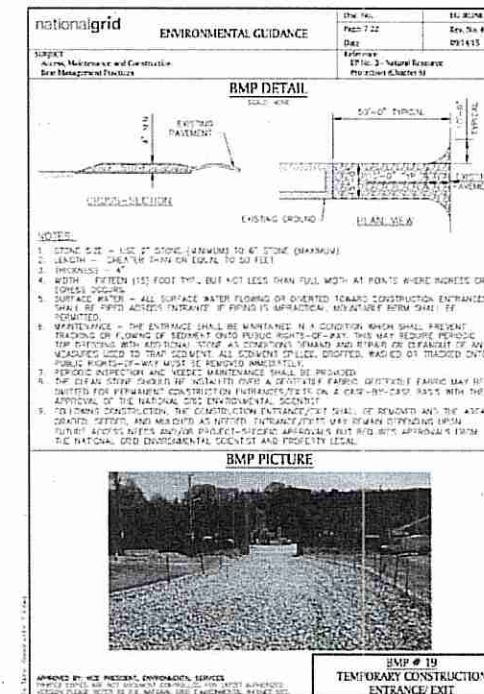




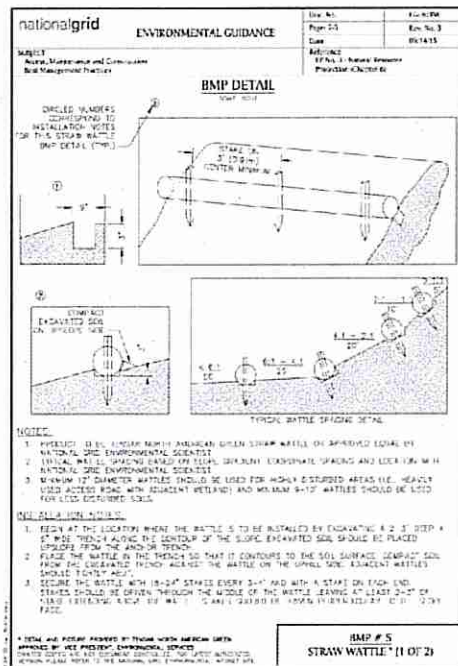
Detail #1



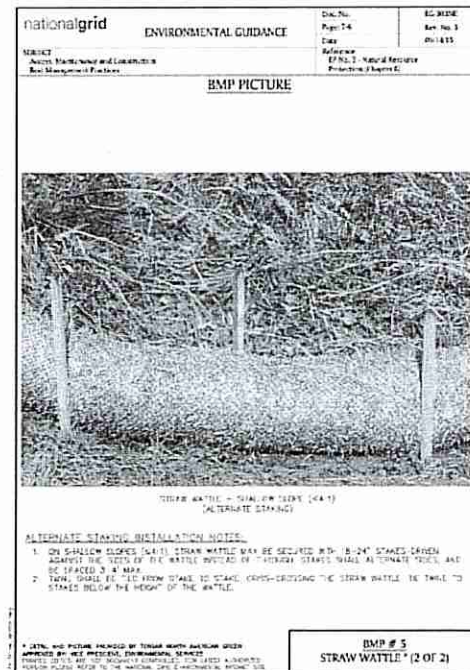
Detail #1



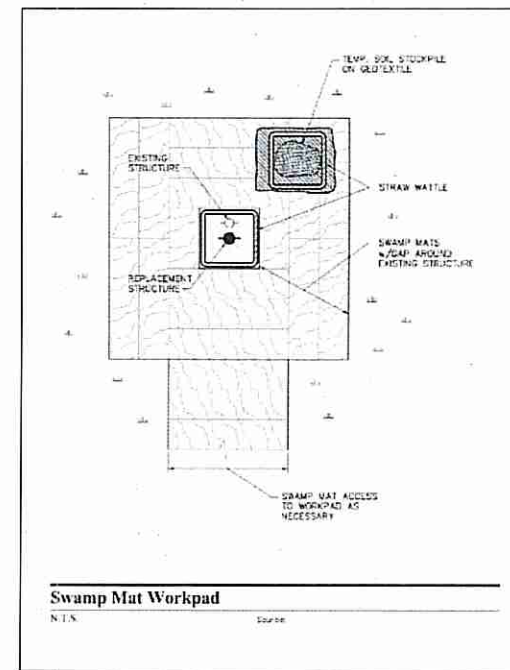
Detail #2



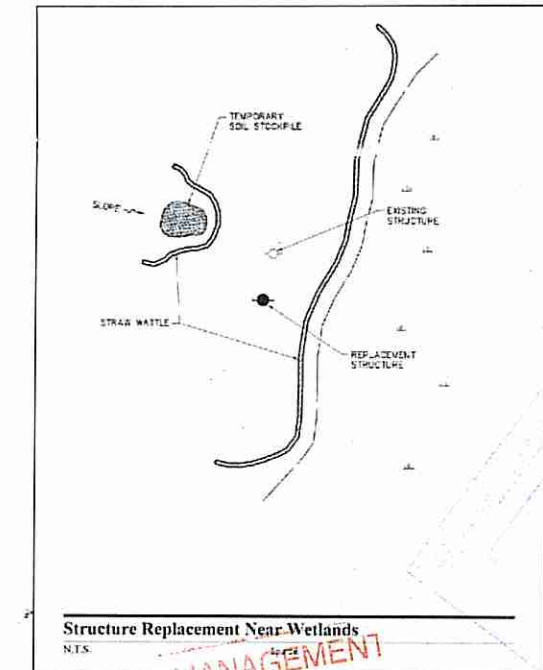
Detail #3



Detail #3



Detail #4



Detail #5

Not to Scale

Scale

3308 34.5kV Subtransmission Line
 Asset Refurbishment Project
 Proposed New Utility Poles
 St. Dominic Road, South Kingstown, Rhode Island
 Details
 Sheet 3 of 3

SEP 12 2017
 FILE # 17-0105
 CHANGES ALLOWED WITHOUT PRIOR APPROVAL
 APPROVED PLANS MUST BE AT CONSTRUCTION SITE

Source: VHB, NGRID, RIGIS

nationalgrid

