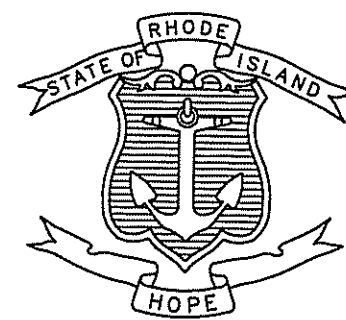


INDEX

SHEET NO.	DESCRIPTION
BRIDGE PLANS	
1	COVER SHEET
2	BRIDGE TYPICAL SECTIONS
3	BRIDGE GENERAL PLAN
4	BRIDGE DEMOLITION PLAN
HIGHWAY PLANS	
5	STANDARD SYMBOLS & STANDARD LEGEND
6-7	STANDARD NOTES 1 & 2
8	JOB SPECIFIC PLAN SYMBOLS, LEGEND, NOTES & DETAILS
9	TYPICAL SECTION
10	GENERAL PLAN
11-12	CROSS SECTIONS 1 & 2

STATE OF RHODE ISLAND



DEPARTMENT OF TRANSPORTATION

PLAN, PROFILE AND SECTIONS OF PROPOSED
STATE HIGHWAY

REPLACEMENT OF
RAILROAD AVENUE BRIDGE NO. 354

TOWN OF BURILLVILLE

COUNTY OF PROVIDENCE

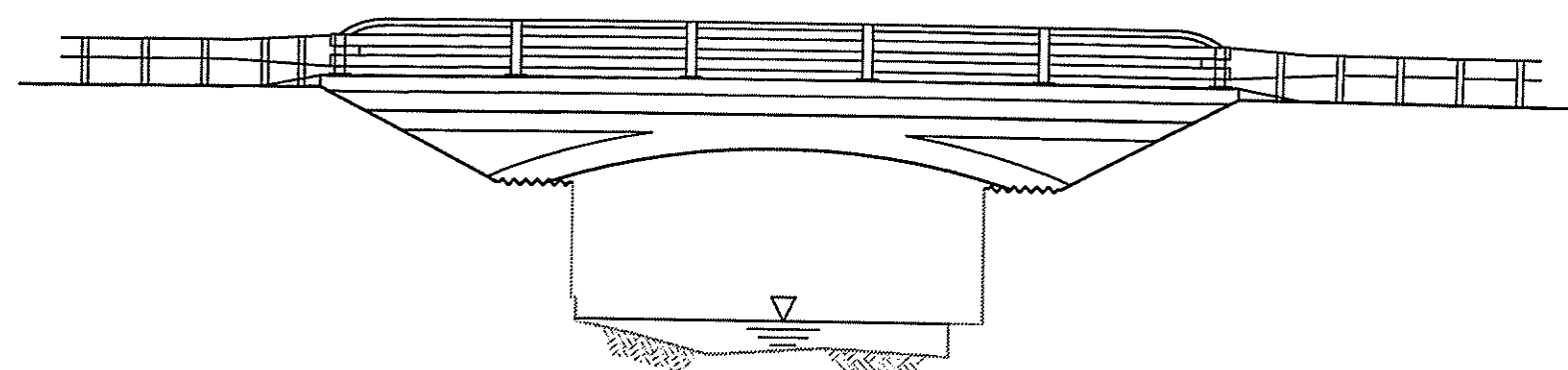
R.I. CONTRACT NO. 201X-CB-XXX F.A. PROJECT NO. XXX-XXXX(XXX)

PAVEMENT STRUCTURE

- 2" BITUMINOUS SURFACE COURSE CLASS 9.5
- 3" BITUMINOUS BASE COURSE CLASS 19.0
- 12" GRAVEL BORROW SUBBASE COURSE

R.I. STANDARD SPECIFICATIONS AND STANDARD DETAILS

SPECIFICATIONS TO GOVERN THIS PROJECT ARE THE R.I. STANDARD SPECIFICATIONS FOR ROAD AND BRIDGE CONSTRUCTION, AMENDED AUGUST 2013, WITH ALL REVISIONS, AND THE STATE AND FEDERAL SPECIAL PROVISIONS INCLUDED IN THE CONTRACT DOCUMENTS. STANDARD DETAILS FOR THIS PROJECT ARE R.I. STANDARD DETAILS, 1998 EDITION, WITH ALL REVISIONS.

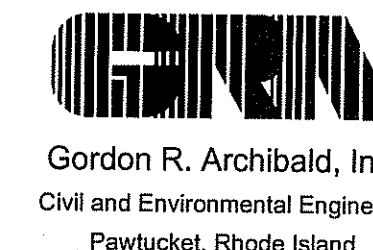
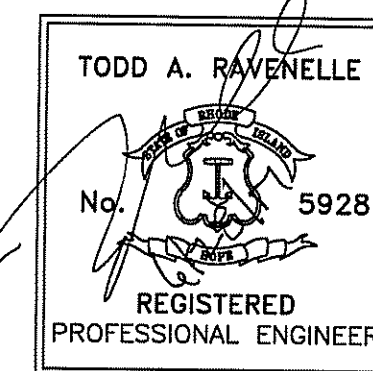


SOUTH ELEVATION

SCALE: 1" = 10'

BASE OF LEVELS
NAVD 88

NAD 83 (1992)



DESIGN DESIGNATION

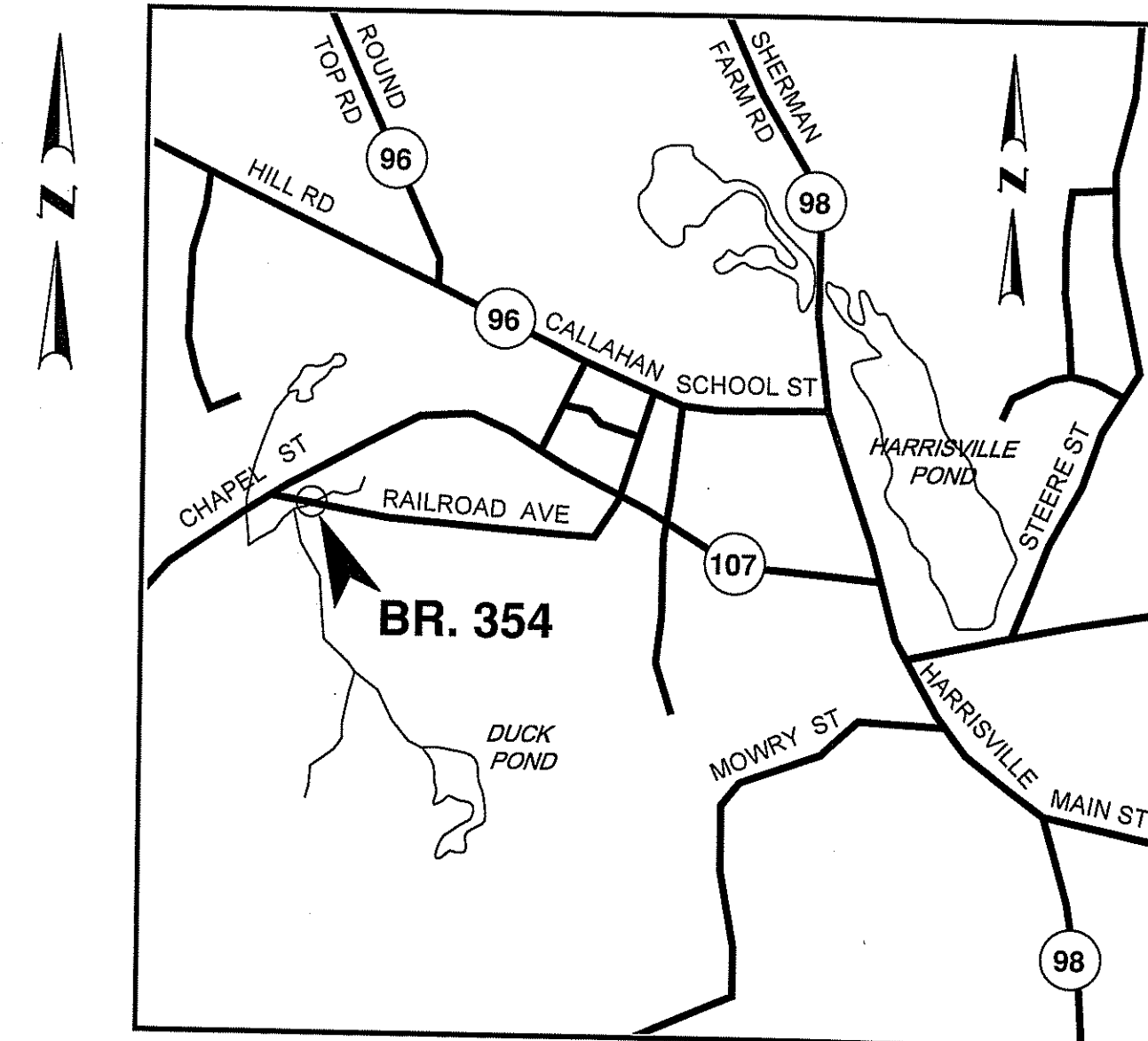
AADT (2015)	210 VPD
AADT (2025)	230 VPD
K	9%
D	50/50
T (PEAK HOUR)	2%
DHV	19 VPH
DDHV	10 VPH
DESIGN SPEED	25 MPH

Contract Number XXXXX

Number of Sheet 1

Total Sheets 12

FED. ROAD DIV. NO.	STATE	FEDERAL AID PROJECT NO.	FISCAL YEAR	SHEET NO.	TOTAL SHEETS
1	R.I.			1	XX

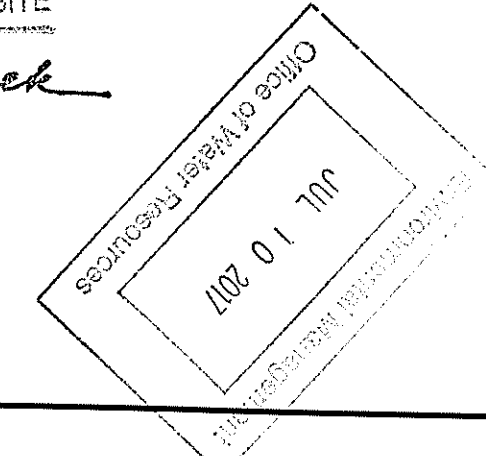


LOCATION MAP

SCALE: 1" = 1,000'

DEPARTMENT OF ENVIRONMENTAL MANAGEMENT
OFFICE OF WATER RESOURCES
FRESHWATER WETLANDS PROGRAM
APPROVED WITH CONDITIONS
AS SPECIFIED IN THE LETTER OF APPROVAL
DATED AUG 11 2017 FILE # 17-0115
NO CHANGES ALLOWED WITHOUT PRIOR APPROVAL
APPROVED PLANS MUST BE AT CONSTRUCTION SITE

Gordon R. Archibald



Gordon R. Archibald, Inc.
Civil and Environmental Engineers
Pawtucket, Rhode Island

**WETLAND SUBMISSION
APRIL 17, 2017
REVISED JUNE 27, 2017**

R.I. DEPARTMENT OF TRANSPORTATION

APPROVED

DEPUTY CHIEF ENGINEER _____ DATE _____

APPROVED

CHIEF ENGINEER _____ DATE _____

APPROVED

DIRECTOR _____ DATE _____

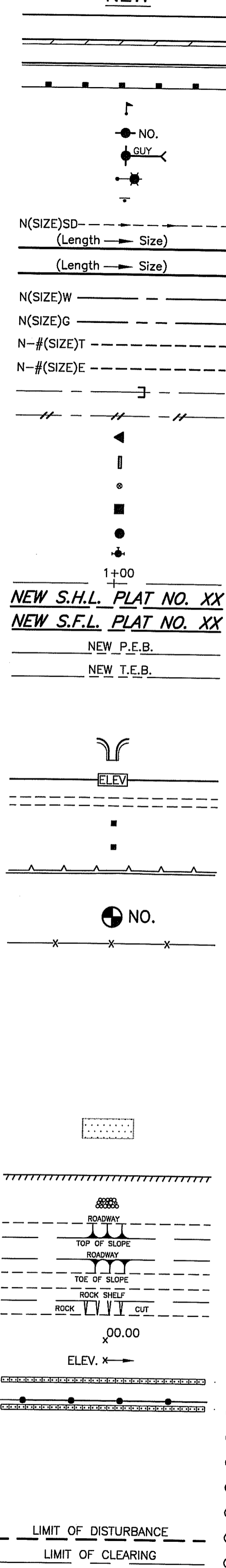
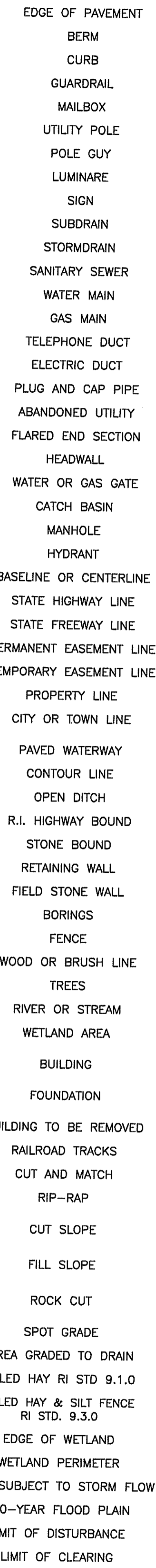
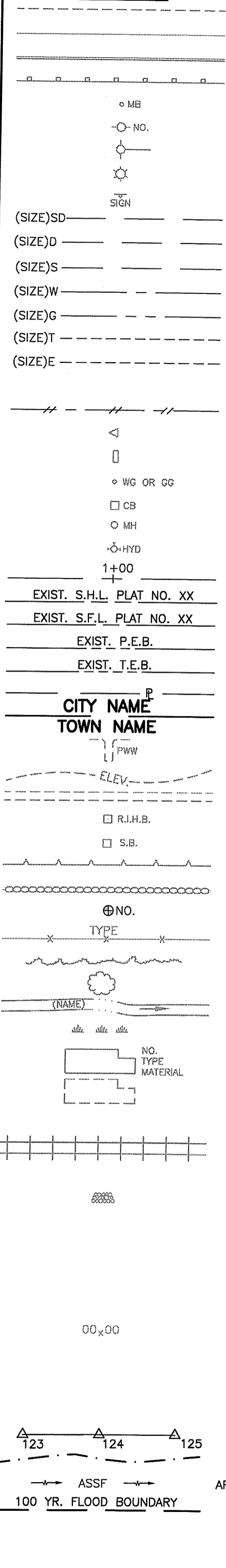
DEPARTMENT OF TRANSPORTATION
FEDERAL HIGHWAY ADMINISTRATION

APPROVED

DIVISION ADMINISTRATOR _____ DATE _____

EXISTING

NEW



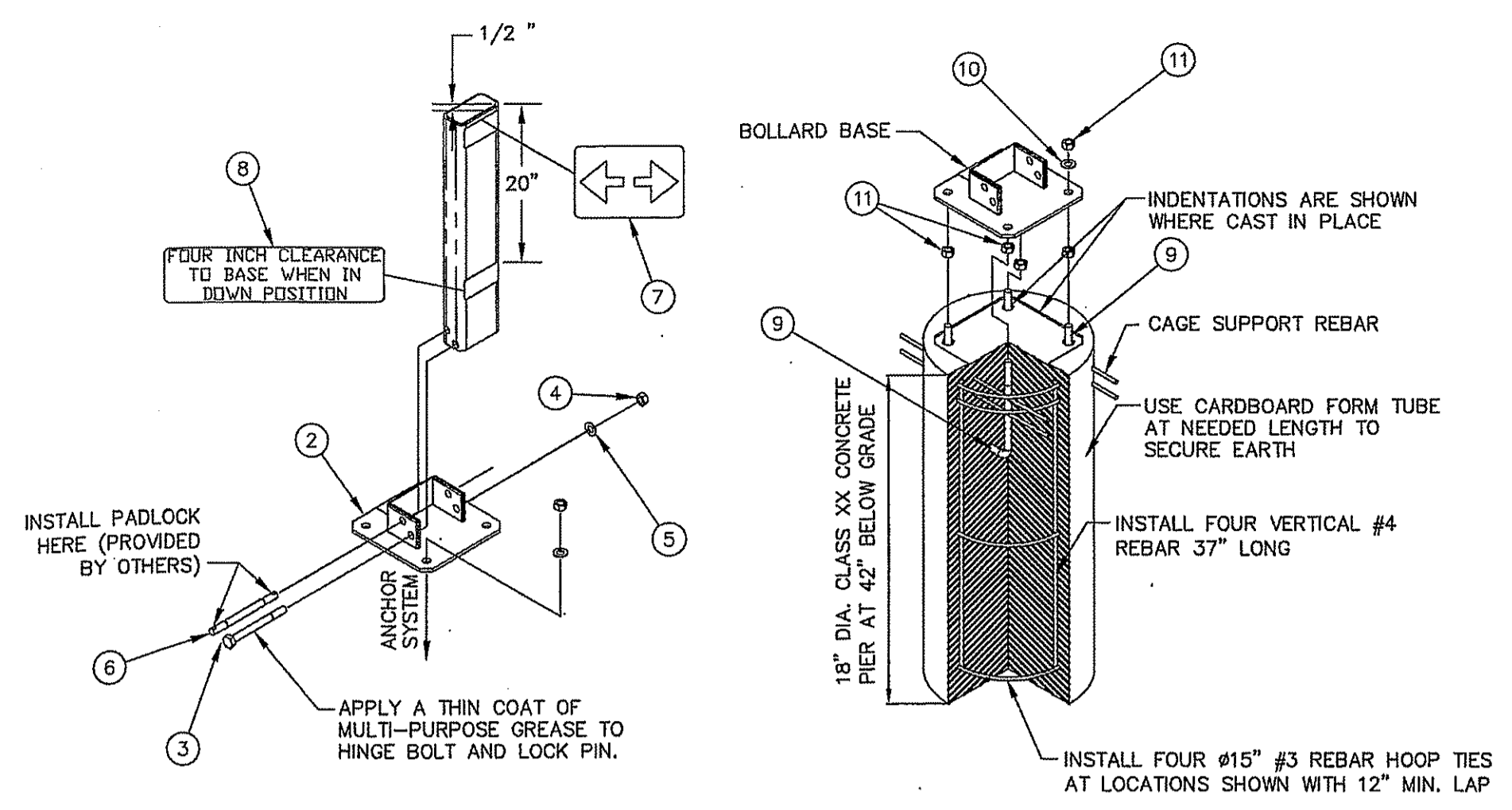
- 1.1.0 UNDERDRAIN
1.3.0 CONCRETE CONNECTING COLLAR
2.1.0 CONCRETE HEADWALLS FOR PIPE CULVERTS
2.2.0 STANDARD HEADWALLS FOR MULTIPLE 3'-6" TO 7'-0" PIPE CULVERTS
2.3.0 (DIA.) PRECAST CONCRETE FLARED END SECTION
3.2.0 BRICK/SOLID BLOCK 4'-0" ROUND MANHOLE
3.2.1 (DIA.) BRICK/SOLID BLOCK 5'-0" OR 6'-0" ROUND MANHOLE
3.3.0 BRICK/SOLID BLOCK TYPE "D" SQUARE CATCH BASIN
3.3.2 BRICK/SOLID BLOCK TYPE "F" SQUARE CATCH BASIN
3.3.3 SOLID BLOCK FLUSH SQUARE CATCH BASIN
3.4.0 BRICK/SOLID BLOCK TYPE "D" ROUND CATCH BASIN
3.4.1 BRICK/SOLID BLOCK ROUND CATCH BASIN WITH GUTTER INLET
3.4.2 BRICK/SOLID BLOCK TYPE "F" ROUND CATCH BASIN
3.4.3 BRICK/SOLID BLOCK TYPE "R" CATCH BASIN
3.4.4 SOLID BLOCK FLUSH ROUND CATCH BASIN
3.4.5 (DIA.) BRICK/SOLID BLOCK 5'-0" OR 6'-0" ROUND CATCH BASIN
3.5.0 SOLID BLOCK SHALLOW TYPE "F" SQUARE CATCH BASIN
3.5.1 (SIZE) SOLID BLOCK SHALLOW 5'-0" OR 6'-0" SQUARE CATCH BASIN
3.6.0 BRICK/SOLID BLOCK DROP INLET
3.7.0 (DIA.) BRICK/SOLID BLOCK ROUND MANHOLE OR CATCH BASIN GREATER THAN 12'-0"
4.2.0 PRECAST 4'-0" ROUND MANHOLE
4.2.1 PRECAST 5'-0" ROUND MANHOLE
4.2.2 PRECAST 6'-0" ROUND MANHOLE
4.3.0 (SIZE) PRECAST 4'-0" OR 6'-0" SQUARE MANHOLE OR CATCH BASIN
4.4.0 (DIA.) PRECAST 4'-0", 5'-0", OR 6'-0" ROUND CATCH BASIN
4.5.0 PRECAST CONCRETE DROP INLET
4.5.1 PRECAST CONCRETE DROP INLET LATERAL OUTLET
4.5.2 PRECAST CONCRETE DROP INLET LONGITUDINAL OUTLET
5.3.0 CATCH BASIN AND MANHOLE STEP
5.4.0 CONCRETE COLLARS
6.1.0 LIGHT-DUTY SQUARE FRAME AND ROUND COVER
6.1.1 HEAVY DUTY SQUARE FRAME AND ROUND COVER
6.2.0 LIGHT-DUTY ROUND FRAME AND COVER
6.2.1 HEAVY-DUTY ROUND FRAME AND COVER
6.3.0 SQUARE FRAME AND GRATE
6.3.1 SQUARE FRAME AND GRATE
6.3.2 SQUARE FRAME AND GRATE (BICYCLE SAFE)
6.3.3 HIGH CAPACITY FRAME AND GRATE
6.3.4 HIGH CAPACITY FRAME AND GRATE (BICYCLE SAFE)
6.4.0 ROUND FRAME AND GRATE
7.1.0S PRECAST CONCRETE CURB (STRAIGHT)
7.1.0C PRECAST CONCRETE CURB (CIRCULAR)
7.1.1 3'-0" PRECAST CONCRETE TRANSITION CURB
7.1.2 6'-0" PRECAST CONCRETE TRANSITION CURB
7.1.4 PRECAST 2'-0" RADIUS CORNER
7.1.5 PRECAST CONCRETE INLET STONE (FOR SQUARE CATCH BASIN)
7.1.6 PRECAST CONCRETE INLET STONE (FOR ROUND CATCH BASIN)
7.1.7 PRECAST CONCRETE APRON STONE (FOR SQUARE CATCH BASIN)
7.1.8 PRECAST CONCRETE APRON STONE (FOR ROUND CATCH BASIN)
7.2.0S PRECAST CONCRETE SLOPED FACE CURB (STRAIGHT)
7.2.0C PRECAST CONCRETE SLOPED FACE CURB (CIRCULAR)
7.2.1 PRECAST CONCRETE SLOPED FACE TRANSITION CURB
7.2.2 PRECAST CONCRETE TRANSITION CURB (VERTICAL FACE TO SLOPED FACE)
7.3.0S GRANITE CURB (STRAIGHT)
7.3.0C GRANITE CURB (CIRCULAR)
7.3.1 3'-0" GRANITE TRANSITION CURB
7.3.2 6'-0" GRANITE TRANSITION CURB
7.3.3 GRANITE WHEELCHAIR RAMP TRANSITION CURB
7.3.4 GRANITE 2'-0" RADIUS CORNER
7.3.5 GRANITE INLET STONE (FOR SQUARE CATCH BASIN)
7.3.6 GRANITE INLET STONE (FOR ROUND CATCH BASIN)
7.3.7 GRANITE APRON STONE (FOR SQUARE CATCH BASIN)
7.3.8 GRANITE APRON STONE (FOR ROUND CATCH BASIN)
7.4.0 GRANITE SLOPED FACE CURB
7.4.1 GRANITE SLOPED FACE TRANSITION CURB

- 7.4.2 GRANITE TRANSITION CURB (VERTICAL FACE TO SLOPE FACE)
7.5.0 BITUMINOUS CONCRETE LIP CURB
7.5.1A BITUMINOUS BERM (CONSTRUCTION METHOD A)
7.5.1B BITUMINOUS BERM (CONSTRUCTION METHOD B)
7.6.0 CURB SETTING DETAIL
8.2.0 BITUMINOUS CONCRETE DITCH
8.3.0 RIP-RAP DITCH
8.4.0 PAVED WATERWAY
9.1.0 BALED HAY EROSION CHECK
9.2.0 SILT FENCE DETAIL
9.3.0 BALED HAY DITCH EROSION CHECK AND SILT FENCE COMBINED
9.4.0 BALED HAY DITCH AND SWALE EROSION CHECK
9.5.0 LOG AND HAY CHECK DAM
9.7.0 DEWATERING BASIN
9.8.0 BALED HAY CATCH BASIN INLET PROTECTION
9.9.0 CONSTRUCTION ACCESS
10.1.0 WET STONE MASONRY RETAINING WALL
10.2.0 RUBBLE MASONRY WALL
10.3.0 CONCRETE RETAINING WALL
10.4.0 STONE MASONRY STEPS
14.1.0 CONCRETE HIGHWAY BOUND
15.1.0 POST AND MOUNTINGS FOR RURAL MAILBOX
15.2.0 (NO.) POST AND MULTIPLE MOUNTINGS FOR RURAL MAILBOXES
18.2.0 PRECAST TYPE "A" HANDHOLE
18.3.0 HEAVY DUTY TYPE "H" HANDHOLE
20.2.0 ALUMINUM LIGHTING STANDARDS
24.6.1 BI-DIRECTIONAL CONTROL DEVICE
26.2.0 STREET SIGN MOUNTING DETAIL
26.3.0 POLYETHYLENE DRUM WITH MARKINGS
31.1.0 PVC PLASTIC PIPE TYPE III BARRICADE
31.2.0 CHAIN LINK FENCE 3'-0" TO 4'-0"
31.2.1 CHAIN LINK FENCE 5'-0" TO 6'-0"
31.3.0 CHAIN LINK FENCE 5'-0" TO 6'-0" INTERMEDIATE POST
34.1.0 WOVEN WIRE RIGHT-OF-WAY FENCE (STEEL POST)
34.2.0 TYPICAL GUARDRAIL INSTALLATION
34.2.1 STEEL BEAM GUARDRAIL
34.2.2 STEEL BEAM GUARDRAIL DETAILS
34.2.3 STEEL BEAM GUARDRAIL DOUBLE FACED ASSEMBLY
34.2.5 STEEL BEAM GUARDRAIL FIXTURES
34.3.1 STEEL BEAM GUARDRAIL REFLECTORIZED TRIANGULAR DELINEATOR
34.3.2 GUARDRAIL END SECTION
34.3.3 TERMINAL END SECTION (SINGLE FACE)
34.3.4 ANCHORAGE DETAILS APPROACH END SECTION
34.4.0 ANCHORAGE DETAILS TRAILING END SECTION
34.4.1 STEEL BACKED TIMBER GUARDRAIL
34.4.2 STEEL BACKED TIMBER GUARDRAIL TERMINAL SECTION-TYPE 1
40.1.0 DOUBLE-FACED PRECAST MEDIAN BARRIER
40.2.0 SINGLE-FACED PRECAST MEDIAN BARRIER
40.2.1 SINGLE-FACED PRECAST MEDIAN BARRIER
40.3.0 PRECAST MEDIAN BARRIER TRANSITION UNIT
40.5.0 PRECAST MEDIAN BARRIER FOR TEMPORARY TRAFFIC CONTROL
43.1.0 CEMENT CONCRETE SIDEWALK
43.2.0 BITUMINOUS CONCRETE SIDEWALK
43.3.0 WHEELCHAIR RAMP
43.3.1 WHEELCHAIR RAMP FOR LIMITED RIGHT-OF-WAY AREAS
43.4.0 DRIVEWAY DEVELOPMENT FOR 3'-0" TRANSITION CURB
43.4.1 DRIVEWAY DEVELOPMENT FOR 6'-0" TRANSITION CURB
43.5.0 CEMENT CONCRETE DRIVEWAYS
48.1.0 DETECTABLE WARNING SYSTEM
51.1.0 TREE PROTECTION DEVICE
51.1.1 DRIP LINE TREE PROTECTION DEVICE FOR EXISTING TREES
51.2.0 SHRUB PROTECTION DEVICE
51.3.0 TREE WELL
51.4.0 TREE WALL

- AB ADJUST CATCH BASIN TO GRADE
ABM ADJUST CATCH BASIN TO MANHOLE
AC ADJUST CURB STOP TO GRADE
AD ADJUST DRAINAGE MANHOLE TO GRADE
AE ADJUST ELECTRIC MANHOLE TO GRADE
AFC ADJUST FRAME AND COVER TO GRADE
AFG ADJUST FRAME AND GRATE TO GRADE
AG ADJUST GAS GATE BOX TO GRADE
AHH ADJUST HANDHOLE TO GRADE
AS ADJUST SANITARY SEWER MANHOLE TO GRADE
AT ADJUST TELEPHONE MANHOLE TO GRADE
AW ADJUST WATER GATE BOX TO GRADE
BCD BITUMINOUS CONCRETE DRIVEWAY
3" BITUMINOUS CONCRETE TYPE 1-2
8" GRAVEL BORROW SUBBASE COURSE
BPS BUILD NEW STRUCTURE OVER EXISTING PIPE
CCB CLEAN CATCH BASIN
CCP CUT AND CAP PIPE WITH RESTRAINT (ALL SIZES)
CCF CLEAN AND FLUSH PIPE
CG CLEARING AND GRUBBING
CMH CLEAN MANHOLE
CP (DEPTH) COLD PLANE
CPP CUT AND PLUG PIPE (ALL TYPES, ALL SIZES)
DB REMOVE AND DISPOSE BITUMINOUS CURB
DC REMOVE AND DISPOSE CONCRETE CURB
DCB REMOVE AND DISPOSE CATCH BASIN
DDI REMOVE AND DISPOSE DROP INLET
DF REMOVE AND DISPOSE FENCE
DFC REMOVE AND DISPOSE FRAME AND COVER
DFE REMOVE AND DISPOSE FLARED END SECTION
DFG REMOVE AND DISPOSE FRAME AND GRATE
DFH REMOVE AND DISPOSE FIRE HYDRANT
DFP REMOVE AND DISPOSE FLEXIBLE PAVEMENT
DH REMOVE AND DISPOSE GUARDRAIL
DHB REMOVE AND DISPOSE HIGHWAY BOUND
DHH REMOVE AND DISPOSE HANDHOLE
DL REMOVE AND DISPOSE LIGHT AND FOUNDATION
DMB REMOVE AND DISPOSE MEDIAN BARRIER
DMH REMOVE AND DISPOSE MANHOLE
DMM REMOVE AND DISPOSE MEDIAN MARKER
DOW REMOVE AND DISPOSE OBSERVATION WELL
DP REMOVE AND DISPOSE PIPE
DPB REMOVE AND DISPOSE PAVEMENT AND RIGID BASE
DRB REMOVE AND DISPOSE RIGID BASE
DS REMOVE AND DISPOSE SIGN
DSS REMOVE AND DISPOSE TRAFFIC SIGNAL SYSTEM
DSW REMOVE AND DISPOSE SIDEWALK
DTD REMOVE AND DISPOSE TELEPHONE DUCT BANKS
DUP REMOVE AND DISPOSE UTILITY POLE
DWW REMOVE AND DISPOSE PAVED WATERWAY
FF FILTER FABRIC RIPRAP FLARED END UNDERLAYMENT
GET FLARED GUARDRAIL END TREATMENT
IA IMPACT ATTENUATOR
IDL IMPERVIOUS DITCH LINER
LOD LIMIT OF DISTURBANCE
LOR LIMIT OF REGRADING
LS 4" LOAM AND SEED

Table with columns: REVISIONS (NO., DATE, BY), FEDERAL AID DIV. NO., STATE, FEDERAL AID PROJECT NO., FISCAL YEAR, SHEET NO., TOTAL SHEETS. Includes project title: RHODE ISLAND DEPARTMENT OF TRANSPORTATION REPLACEMENT OF RAILROAD AVENUE BRIDGE NO. 354 BURLINGTON, RHODE ISLAND. Includes legend: STANDARD PLAN SYMBOLS & STANDARD LEGEND. Includes signature: TODD A. RAVENELLE, REGISTERED PROFESSIONAL ENGINEER. Includes note: THIS PLAN SHALL NOT BE ALTERED.

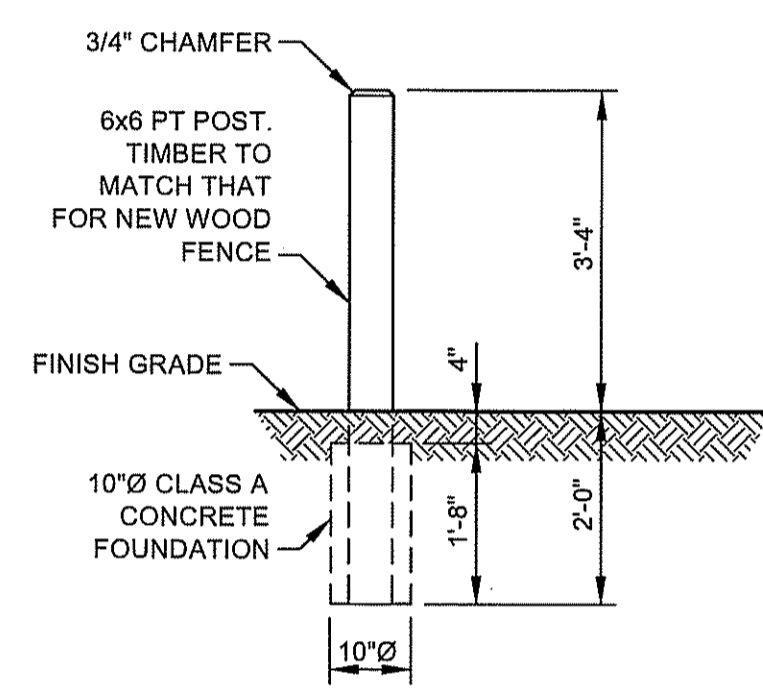
CONCRETE PIER ANCHOR SYSTEM



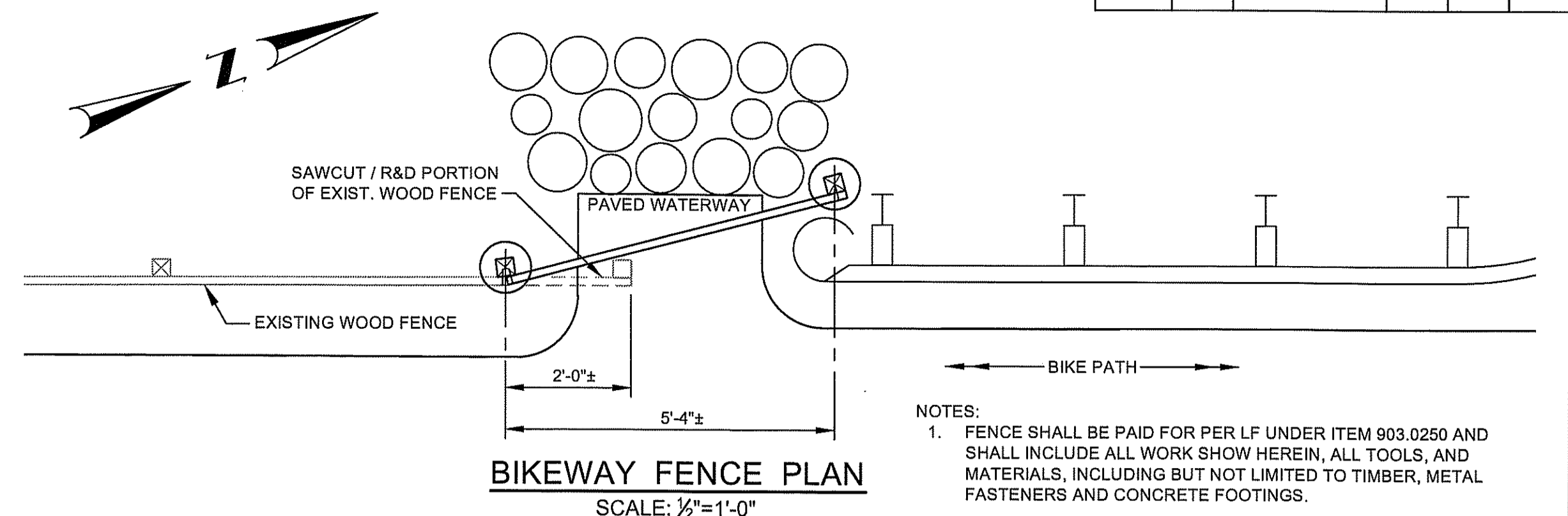
- NOTES:**
- INSTALL BASE TRUE AND LEVEL USING FLAT WASHERS AND HEX NUTS.
 - INSTALL POST TO BASE USING HINGE BOLT, FLAT WASHER, AND HEX NUT AS SHOWN. TACK WELD HEX NUT TO HINGE BOLT OR CHISEL HINGE BOLT THREADS SUCH THAT HEX NUT CANNOT BE EASILY REMOVED.
 - INSTALL LOCKING PIN THROUGH UP POSITION BOLLARD POST, AND INSTALL PADLOCKS WHERE SHOWN.

COLLAPSIBLE BOLLARD DETAIL (BLD)

ITEM	DESCRIPTION	QTY.
1	LPHDHB POST	1
2	LPHDHB BASE	1
3	3/4" X 8" HEX HEAD HINGE BOLT - 18-8 SS	11
4	3/4" HEX NUT - 18-8 SS	2
5	3/4" FLAT WASHER - TYPE A NARROW - 18-8 SS	1
6	3/4" X 8" LOCKING PIN - 18-8 SS	1
7	WARNING ARROWS LABEL	2
8	FOUR INCH CLEARANCE LABEL	2
9	3/4" X 12" TYPE L ANCHOR BOLT - H.D.G.	4
10	3/4" TYPE A FLAT NARROW WASHER GALVANIZED STEEL	4
11	3/4" HEX NUT GALVANIZED STEEL	8

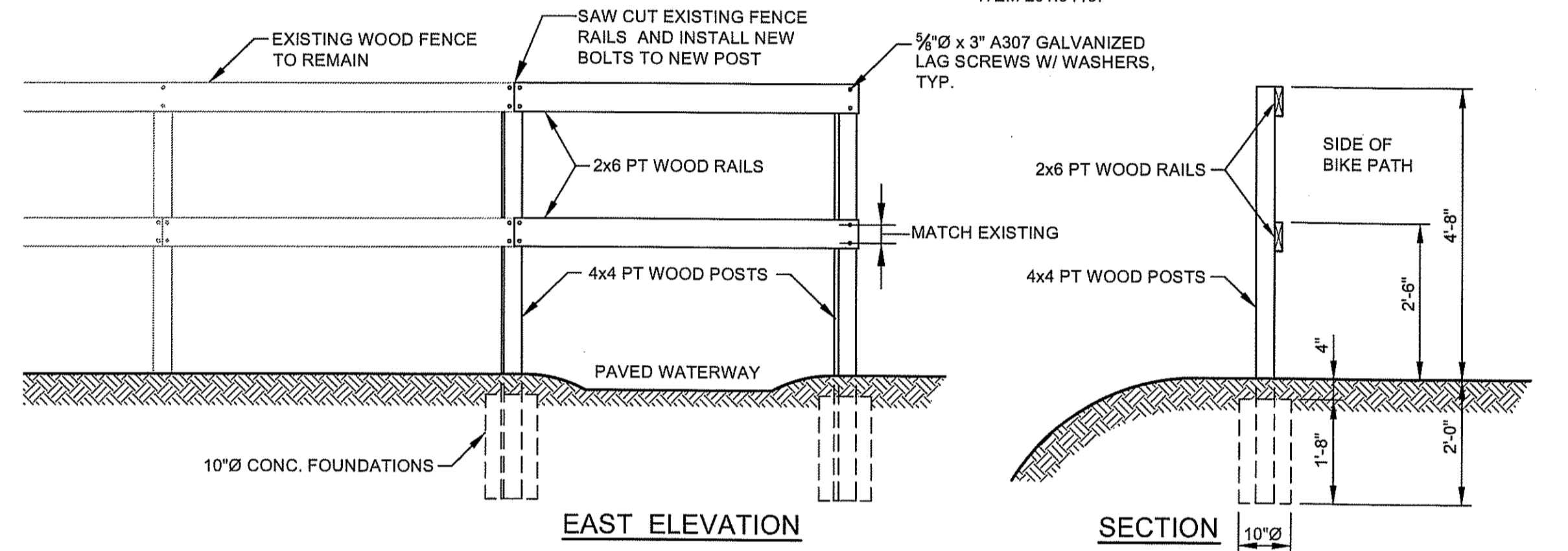


BOLLARD TO BE PAID FOR UNDER ITEM 901.9904 AND SHALL INCLUDE ALL MATERIALS AND LABOR
WOOD BOLLARD DETAIL
 SCALE: 1/2"=1'-0"



BIKEWAY FENCE PLAN
 SCALE: 1/2"=1'-0"

- NOTES:**
- FENCE SHALL BE PAID FOR PER LF UNDER ITEM 903.0250 AND SHALL INCLUDE ALL WORK SHOW HEREIN, ALL TOOLS, AND MATERIALS, INCLUDING BUT NOT LIMITED TO TIMBER, METAL FASTENERS AND CONCRETE FOOTINGS.
 - TIMBER SHALL BE SOUTHERN YELLOW PINE NO. 1 AND SHALL BE PRESSURE TREATED WITH ACQ TO A MINIMUM NET RETENTION OF 4 PCF.
 - REMOVING AND DISPOSING PORTION OF EXISTING FENCE, INCLUDING CONCRETE FOOTING SHALL BE PAID FOR UNDER ITEM 201.0419.



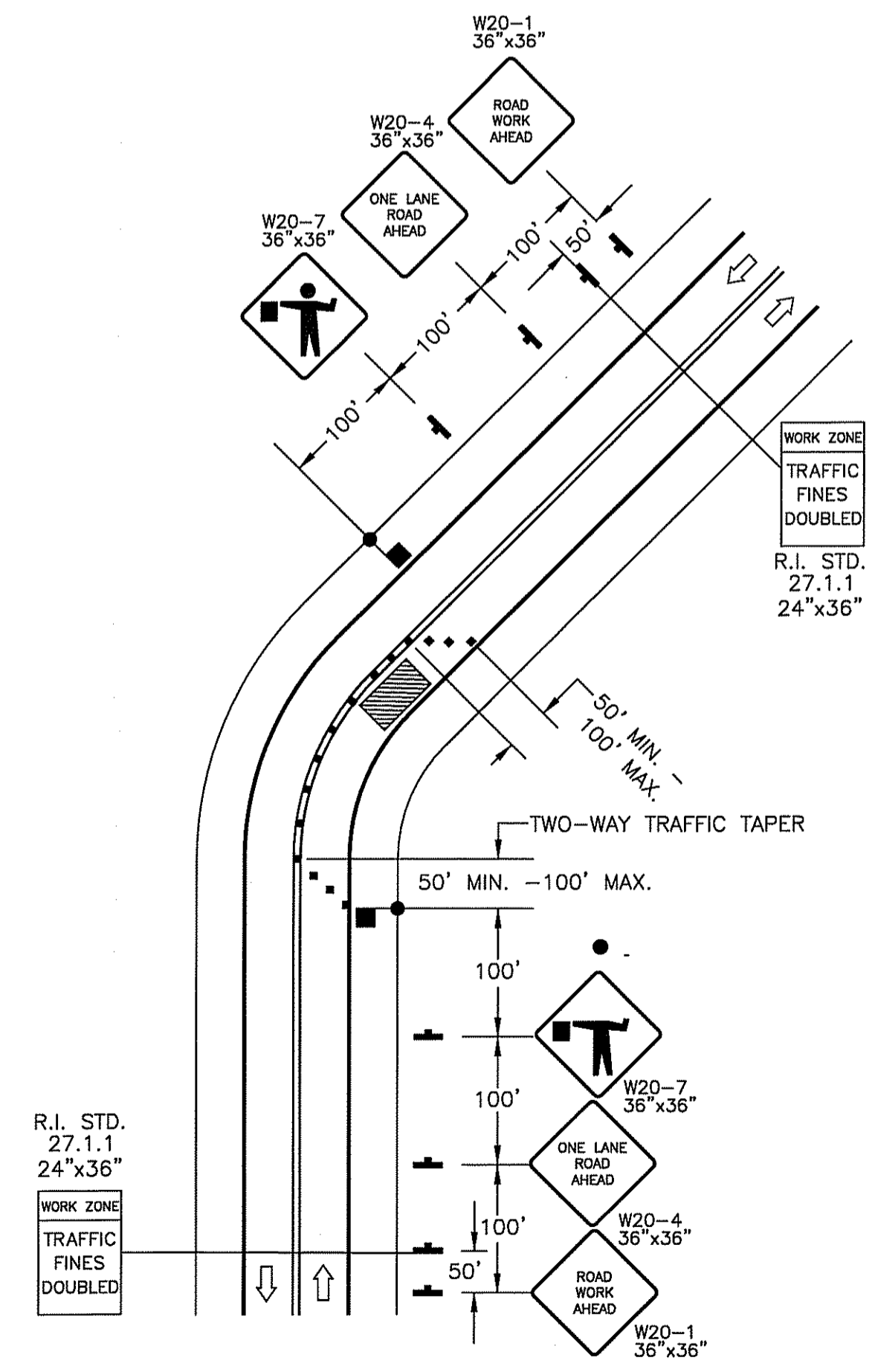
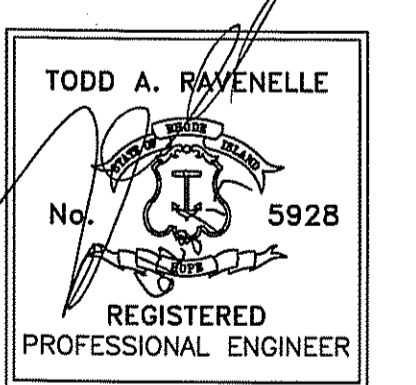
BIKEWAY FENCE DETAILS

SURVEY NOTE:

*ALL SURVEY FIELD BOOKS AND ELECTRONIC DATA SHALL BE SUBMITTED TO THE RIDOT SURVEY SECTION UPON COMPLETION OF THE CONSTRUCTION WORK. FIELD BOOKS SHALL INCLUDE A LISTING OF ALL RI HIGHWAY BOUNDS THAT WERE SET WITH STATIONS, OFFSETS, COORDINATES AND DATE SET CERTIFIED BY THE CONTRACTOR'S PROFESSIONAL LAND SURVEYOR.

LEGEND

- (BLD) COLLAPSIBLE BOLLARD
- (CFS) COMPOST FILTER SOCK
- (MBG) MILLINGS BENEATH GUARDRAIL
- (NGY) NEW UTILITY POLE GUY ANCHOR (BY OTHERS)
- (NUP) NEW UTILITY POLE (BY OTHERS)
- (PWV) PAVED WATERWAY CONFORMING TO RI STD. 8.4.0 EXCEPT PAVEMENT TYPE SHALL MATCH SURFACE COURSE
- (RD) REMOVE AND DISPOSE



LANE CLOSURE ON TWO LANE ROAD USING FLAGGERS

- FOR LOW-VOLUME APPLICATIONS, WITH SHORT WORK ZONES ON STRAIGHT ROADWAYS WHERE THE FLAGGER IS VISIBLE TO ROAD USERS FROM BOTH DIRECTIONS, A SINGLE FLAGGER, POSITIONED TO BE VISIBLE TO ROAD USERS APPROACHING FROM BOTH DIRECTIONS MAY BE USED.
- CHANNELIZING DEVICES ARE TO BE EXTENDED TO A POINT WHERE THEY ARE VISIBLE TO APPROACHING TRAFFIC.
- THE BUFFER SPACE SHOULD BE EXTENDED IF NECESSARY SO THAT THE 100' MAX. TWO-WAY TRAFFIC TAPER IS PLACED BEFORE A HORIZONTAL (OR CREST VERTICAL) CURVE TO PROVIDE ADEQUATE SIGHT DISTANCE FOR THE FLAGGER AND A QUEUE OF STOPPED VEHICLES.
- MAXIMUM SPACING OF CHANNELIZATION DEVICES IN THE 100' MAX. TWO-WAY TRAFFIC TAPERS IS 25 FEET. MAXIMUM SPACING OF CHANNELIZATION DEVICES IN A TANGENT SECTION IS EQUAL IN FEET TO TWO TIMES THE SPEED LIMIT IN MPH.
- MINIMUM LANE WIDTH IS TO BE 10 FEET UNLESS OTHERWISE SHOWN. MINIMUM LANE WIDTH TO BE MEASURED FROM THE EDGE OF CHANNELIZATION DEVICES OR TEMPORARY BARRIER.

DEPARTMENT OF ENVIRONMENTAL MANAGEMENT
 OFFICE OF WATER RESOURCES
 FRESHWATER WETLANDS PROGRAM
 APPROVED WITH CONDITIONS
 AS SPECIFIED IN THE LETTER OF APPROVAL
 DATED AUG 11 2017 FILE # 17-0115
 NO CHANGES ALLOWED WITHOUT PRIOR APPROVAL
 APPROVED PLANS MUST BE AT CONSTRUCTION SITE
Gordon R. Archibald

REVISIONS		
NO.	DATE	BY

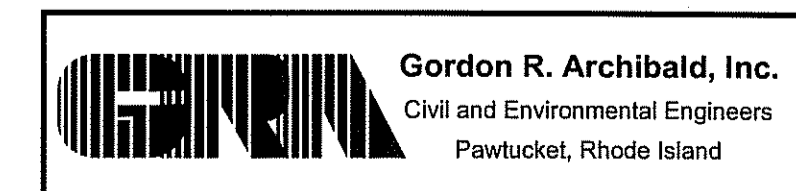
RHODE ISLAND
 DEPARTMENT OF TRANSPORTATION

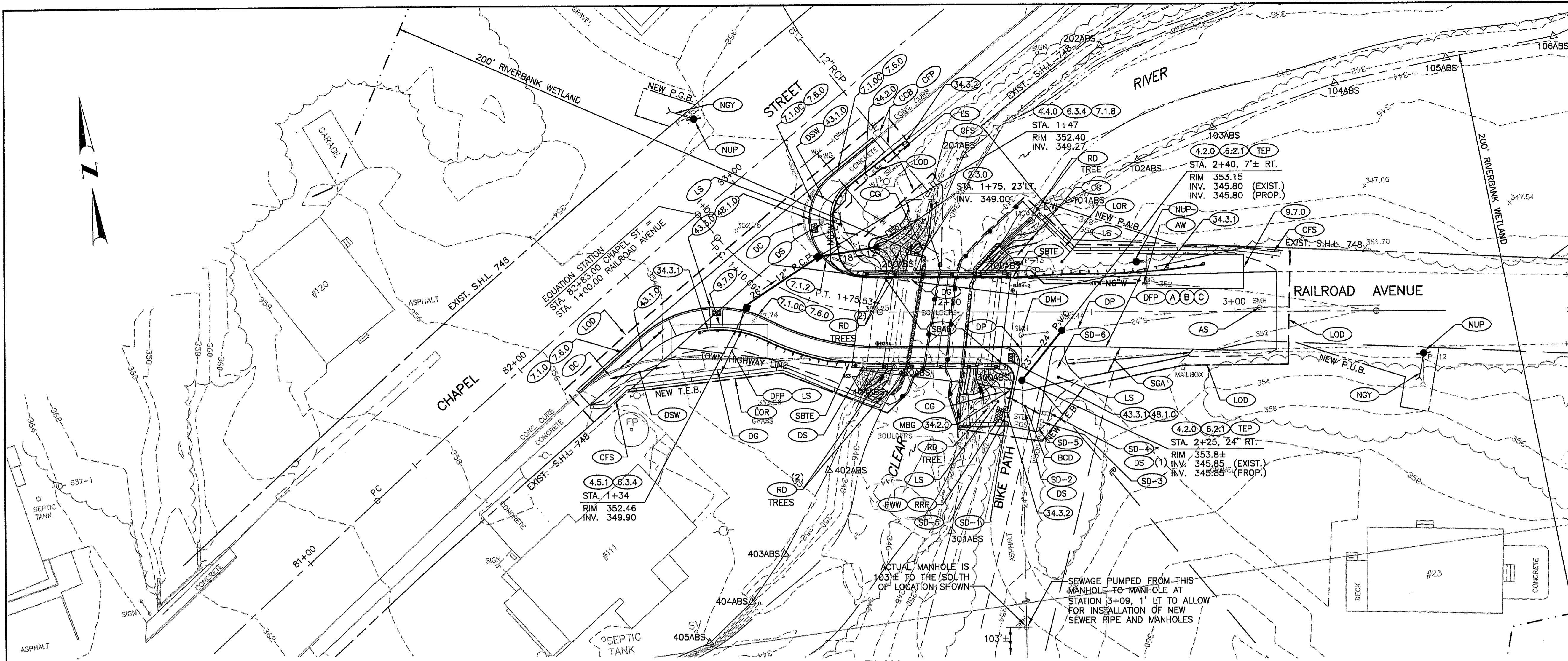
REPLACEMENT OF
 RAILROAD AVENUE BRIDGE NO. 354

BURRILLVILLE, RHODE ISLAND

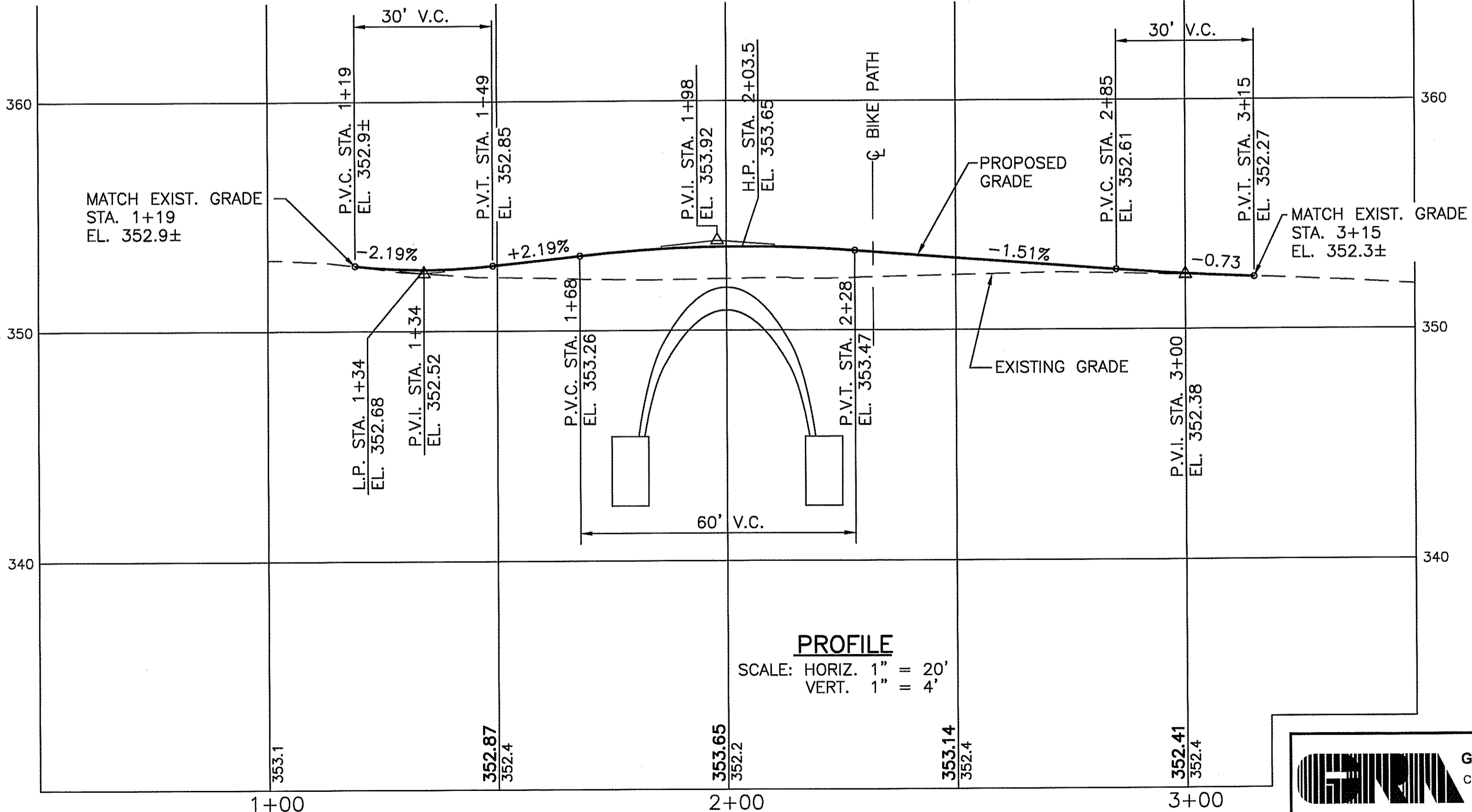
JOB SPECIFIC
 PLAN SYMBOLS, LEGEND & NOTES

CHECKED BY _____ DATE _____ SCALE AS SHOWN





PLAN
SCALE: 1"=20'



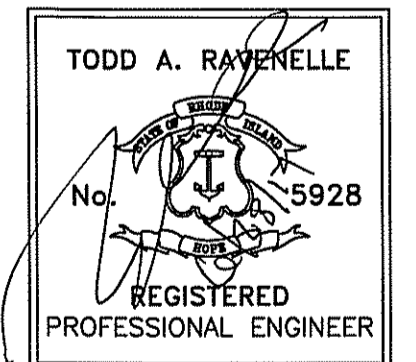
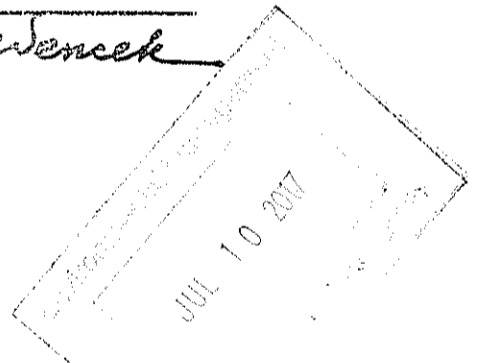
PROFILE
SCALE: HORIZ. 1" = 20'
VERT. 1" = 4'

LEGEND

- RIP RAP
- GROUT AT BASE OF FOOTING
- BORING
- WATER RETENTION BARRIER
- * REMOVE PET WASTE SIGN AND MOUNT WITH NEW R1-1 SIGN. IT SHALL BE CONSIDERED INCIDENTAL TO COST OF REMOVE & DISPOSE SIGN.

DEPARTMENT OF ENVIRONMENTAL MANAGEMENT
OFFICE OF WATER RESOURCES
FRESHWATER WETLANDS PROGRAM
APPROVED WITH CONDITIONS
AS SPECIFIED IN THE LETTER OF APPROVAL
DATED AUG 11 2017 FILE # 17-0115
NO CHANGES ALLOWED WITHOUT PRIOR APPROVAL
APPROVED PLANS MUST BE AT CONSTRUCTION SITE

Stephen D. Wemel



REVISIONS		
NO.	DATE	BY

RHODE ISLAND
DEPARTMENT OF TRANSPORTATION

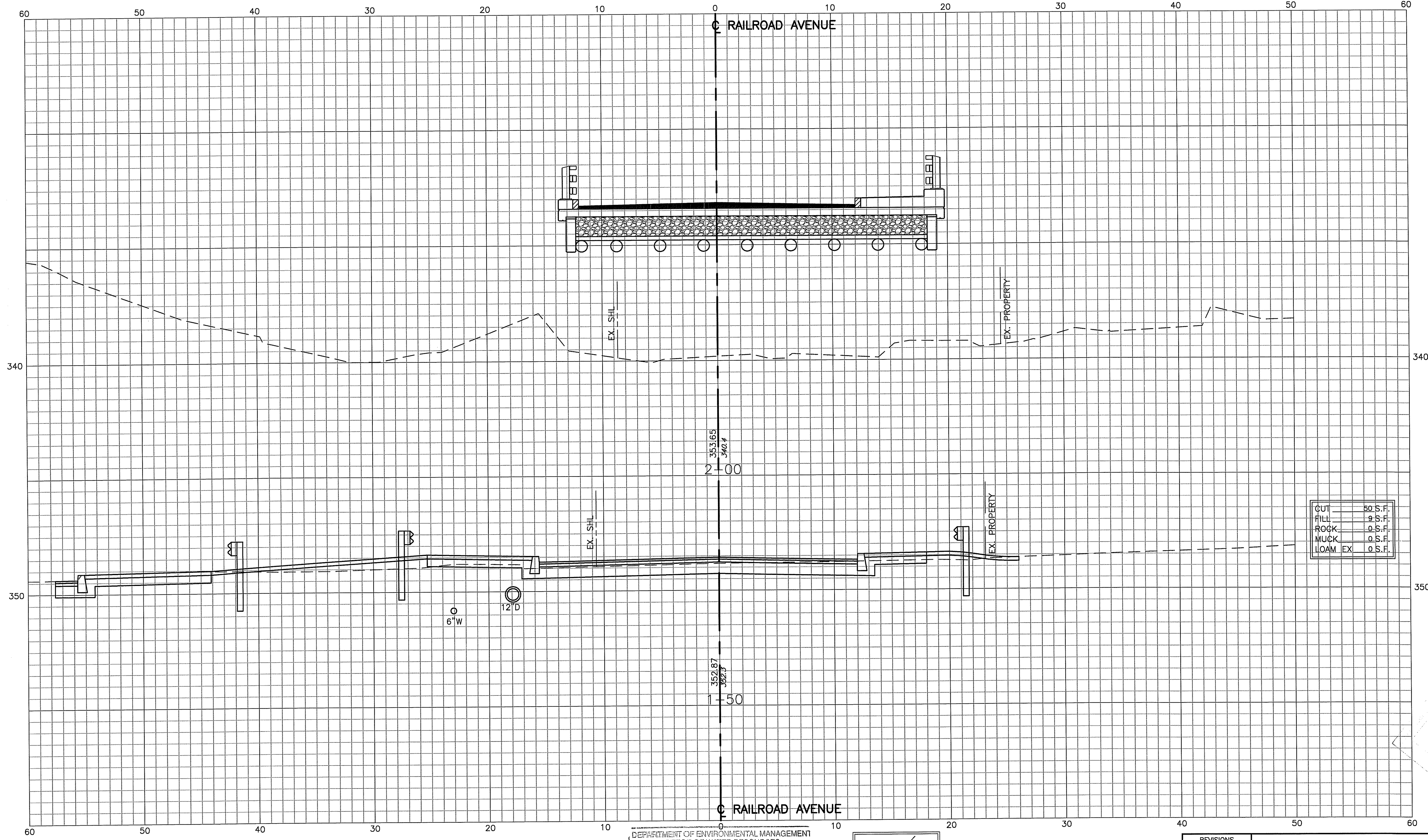
**REPLACEMENT OF
RAILROAD AVENUE BRIDGE NO. 354**

BURRILLVILLE, RHODE ISLAND

GENERAL PLAN

CHECKED BY _____ DATE _____ SCALE AS SHOWN

Gordon R. Archibald, Inc.
Civil and Environmental Engineers
Pawtucket, Rhode Island



CUT	50 S.F.
FILL	9 S.F.
ROCK	0 S.F.
MUCK	0 S.F.
LOAM EX.	0 S.F.

JUL 10 2017
 DEPARTMENT OF ENVIRONMENTAL MANAGEMENT
 OFFICE OF WATER RESOURCES

DEPARTMENT OF ENVIRONMENTAL MANAGEMENT
 OFFICE OF WATER RESOURCES
 FRESHWATER WETLANDS PROGRAM
 APPROVED WITH CONDITIONS
 AS SPECIFIED IN THE LETTER OF APPROVAL
 DATED AUG 11 2017 FILE # 17-0115
 NO CHANGES ALLOWED WITHOUT PRIOR APPROVAL
 APPROVED PLANS MUST BE AT CONSTRUCTION SITE
Jonathan D. Wenzel

TODD A. RAVENELLE
 No. 5928
 REGISTERED PROFESSIONAL ENGINEER

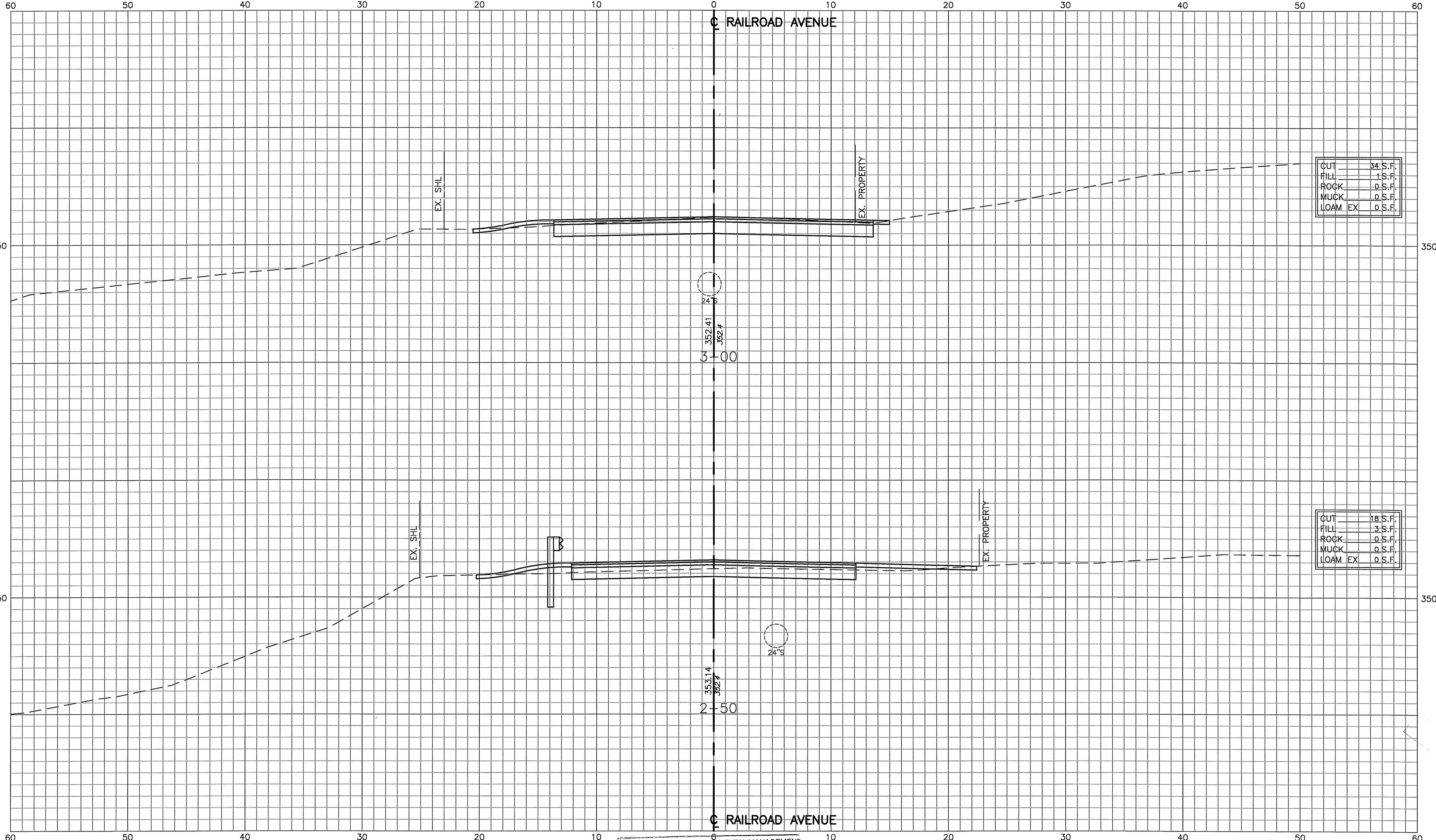
Gordon R. Archibald, Inc.
 Civil and Environmental Engineers
 Pawtucket, Rhode Island

REVISIONS		
NO.	DATE	BY

REPLACEMENT OF RAILROAD AVENUE BRIDGE NO. 354

BURRILLVILLE, RHODE ISLAND

CHECKED BY _____ DATE _____ SCALE 1" = 4'



DEPARTMENT OF ENVIRONMENTAL MANAGEMENT
 OFFICE OF WATER RESOURCES
 FRESHWATER WETLANDS PROGRAM
 APPROVED WITH CONDITIONS
 AS SPECIFIED IN THE LETTER OF APPROVAL
 DATED AUG 11 2017 FILE # 17-015
 NO CHANGES ALLOWED WITHOUT PRIOR APPROVAL
 APPROVED PLANS MUST BE AT CONSTRUCTION SITE

TODD A. RAVENELLE
 No. 5928
 REGISTERED PROFESSIONAL ENGINEER

GRI Gordon R. Archibald, Inc.
 Civil and Environmental Engineers
 Pawtucket, Rhode Island

REVISIONS		
NO.	DATE	BY

REPLACEMENT OF RAILROAD AVENUE BRIDGE NO. 354

BURRILLVILLE, RHODE ISLAND

CHECKED BY _____ DATE _____ SCALE 1" = 4'

F:\FILES\CAD\1627_CURRENT PLANS\0201A_V1_030_XSECTION002