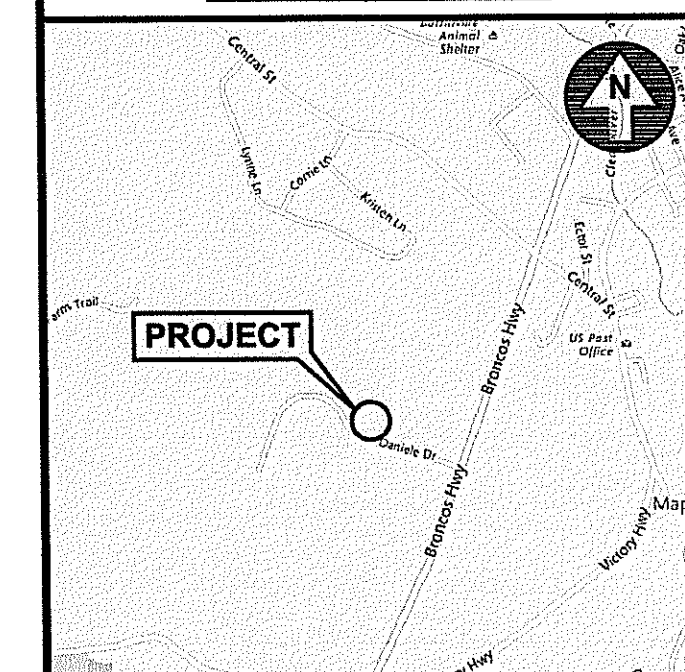
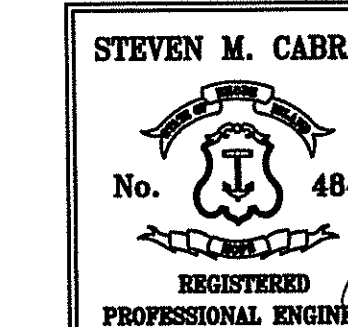




CROSSMAN ENGINEERING

Rhode Island: 151 Centerville Road, Warwick, RI 02886, Phone: (401) 738-5660
 Massachusetts: 103 Commonwealth Avenue, North Attleboro, MA 02763, Phone: (508) 695-1700
 Email: ce@crossmaneng.com

THESE DRAWINGS ARE THE PROPERTY OF CROSSMAN ENGINEERING AND HAVE BEEN PREPARED FOR THEIR CLIENT FOR A SPECIFIC SITE AND PROJECT. THESE DRAWINGS ARE NOT TO BE COPIED OR USED FOR ANY OTHER PURPOSE WITHOUT THE WRITTEN CONSENT OF CROSSMAN ENGINEERING.



LOCATION MAP
NOT TO SCALE

PROJECT TITLE:
WETLAND EDGE VERIFICATION
 PLAT MAP 195, LOT 14
 ZONING DISTRICT GI
 GENERAL INDUSTRIAL DISTRICT
 ROUTE 102 COMMERCE PARK
 DANIELLE DRIVE
 BURRILLVILLE, RHODE ISLAND

PREPARED FOR:
 INDUSTRIAL FOUNDATION
 OF BURRILLVILLE
 c/o
 NEW ENGLAND ECONOMIC
 DEVELOPMENT
 SERVICES, INC.
 1300 Highland Corp. Drive
 Suite 202
 Cumberland, RI 02864

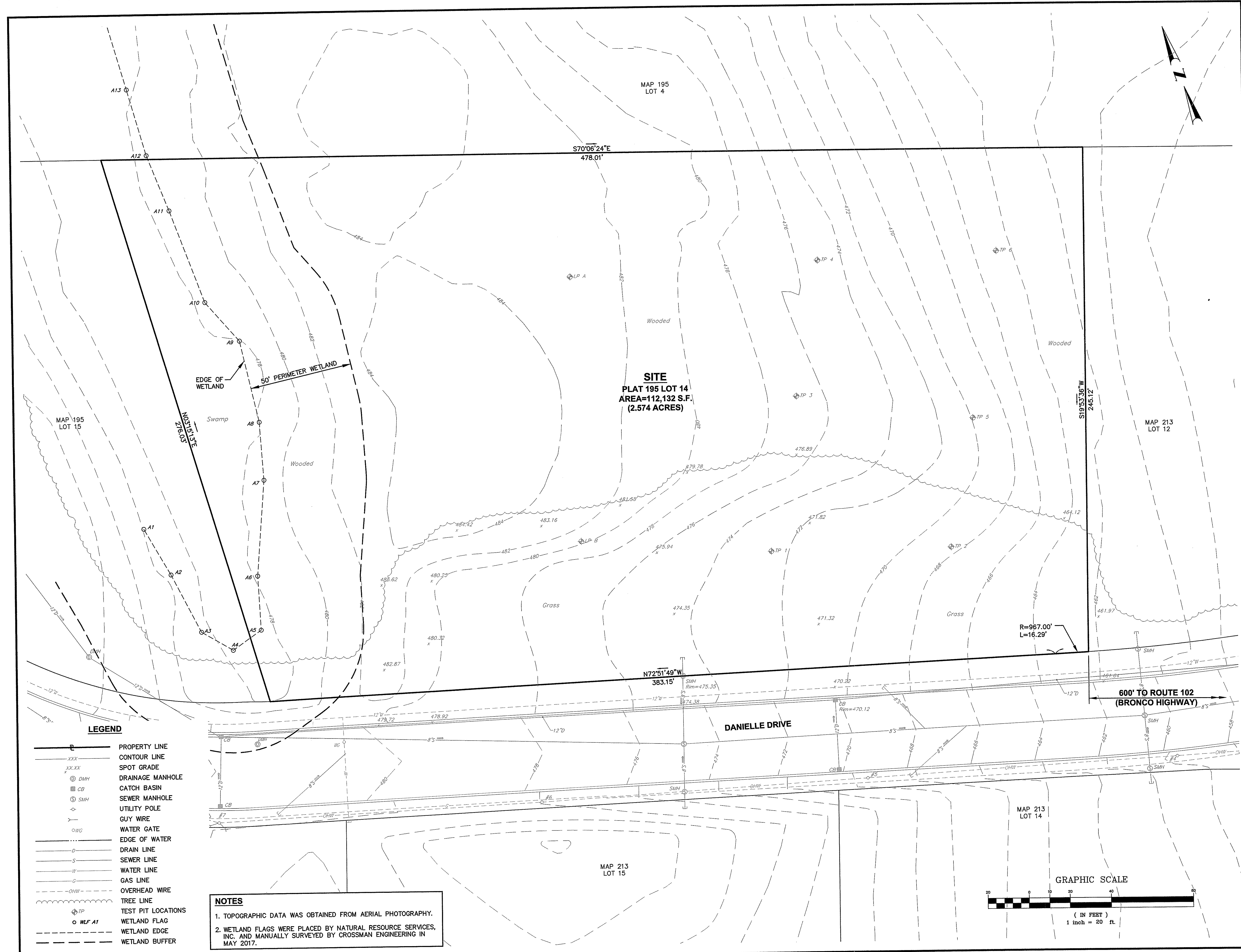
DRAWING TITLE:
WETLAND VERIFICATION PLAN

DATE: MAY 2017 **SCALE:** 1"=20'

DWG. NAME: 2144-C01-WETLAND.dwg

REVISIONS	NUMBER	REMARKS	DATE

DRAWING NUMBER
C1
 SHEET: 1 OF 1



LEGEND

	PROPERTY LINE
	CONTOUR LINE
	SPOT GRADE
	DRAINAGE MANHOLE
	CATCH BASIN
	SEWER MANHOLE
	UTILITY POLE
	GUY WIRE
	WATER GATE
	EDGE OF WATER
	DRAIN LINE
	SEWER LINE
	WATER LINE
	GAS LINE
	OVERHEAD WIRE
	TREE LINE
	TEST PIT LOCATIONS
	WETLAND FLAG
	WETLAND EDGE
	WETLAND BUFFER

NOTES

- TOPOGRAPHIC DATA WAS OBTAINED FROM AERIAL PHOTOGRAPHY.
- WETLAND FLAGS WERE PLACED BY NATURAL RESOURCE SERVICES, INC. AND MANUALLY SURVEYED BY CROSSMAN ENGINEERING IN MAY 2017.

