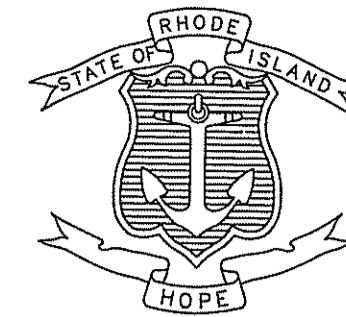


INDEX OF DRAWINGS

SHEET No.	DESCRIPTION
1	COVER SHEET
2	STANDARD PLAN SYMBOLS & STANDARD LEGEND
3	STANDARD NOTES - 1
4	STANDARD NOTES - 2
5	JOB SPECIFIC PLAN SYMBOLS, LEGEND AND NOTES
6	LIST OF ABBREVIATIONS
7	BRIDGE GENERAL NOTES SHEET 1
8	BRIDGE GENERAL NOTES SHEET 2
9	GENERAL PLAN
10	BRIDGE GENERAL PLAN
11	TRANSVERSE SECTION AND ELEVATIONS
12	DEMOLITION PLAN
13	ELEVATIONS
14	CONSTRUCTION PHASING
15	ABUTMENT SECTION
16	ARCH AND UTILITY BAY REPAIRS
17	MISCELLANEOUS DETAILS

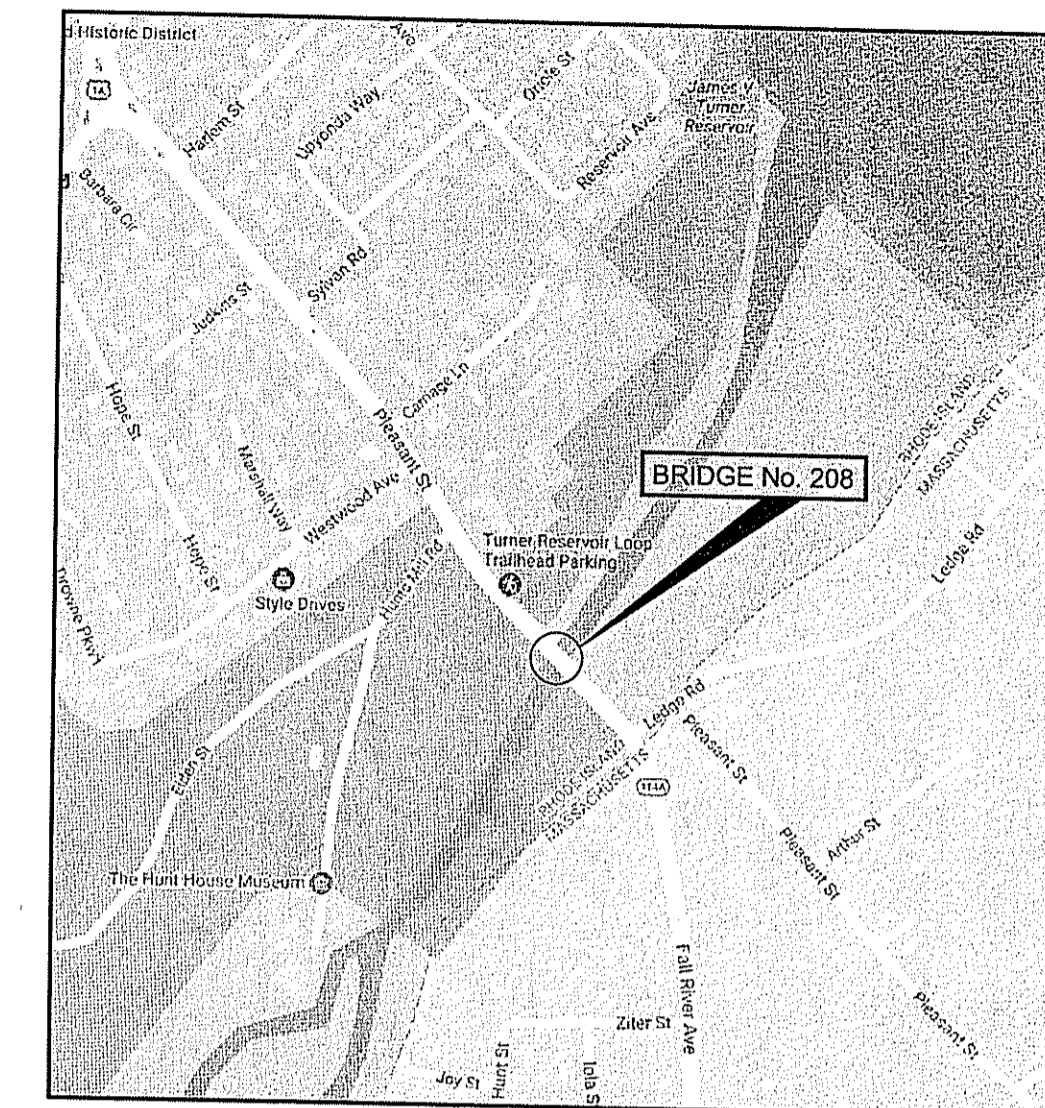
STATE OF RHODE ISLAND



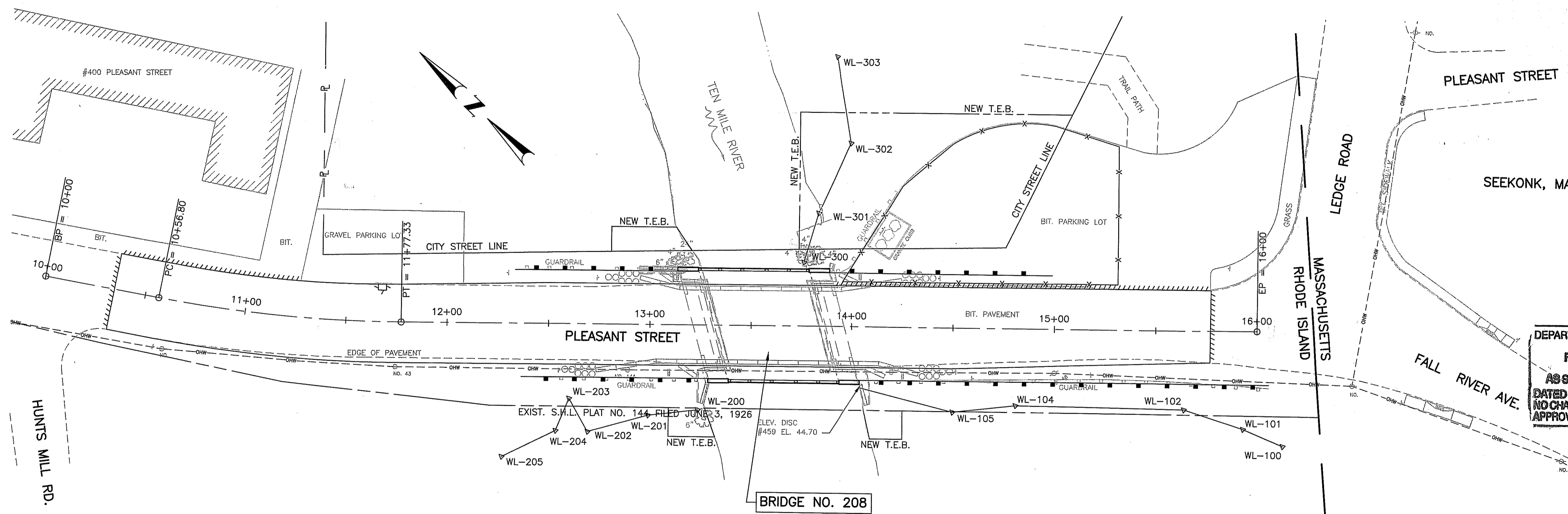
DEPARTMENT OF TRANSPORTATION

PLANS, PROFILES AND SECTIONS OF PROPOSED
STATEWIDE BRIDGE REPAIRS
REPLACEMENT OF HUNTS MILLS BRIDGE No. 208
LENGTH = 0.1 MILES

FED. ROAD DIV. NO.	STATE	FEDERAL AID PROJECT NO.	FISCAL YEAR	SHEET NO.	TOTAL SHEETS
1	RI		2017	1	17



LOCUS MAP
NOT TO SCALE



LAYOUT PLAN
SCALE: 1"=30'

DEPARTMENT OF ENVIRONMENTAL MANAGEMENT
OFFICE OF WATER RESOURCES
FRESHWATER WETLANDS PROGRAM
APPROVED WITH CONDITIONS
AS SPECIFIED IN THE LETTER OF APPROVAL
DATED AUG 31 2017 FILE # 17-0123
NO CHANGES ALLOWED WITHOUT PRIOR APPROVAL
APPROVED PLANS MUST BE AT CONSTRUCTION SITE

James H. Harter
JUL 21 2017

R.I. DEPARTMENT OF TRANSPORTATION	
APPROVED	
ADMINISTRATOR, PROJECT MANAGEMENT	DATE
APPROVED	
CHIEF ENGINEER OF INFRASTRUCTURE	DATE
APPROVED	
DIRECTOR	DATE
US DEPARTMENT OF TRANSPORTATION FEDERAL HIGHWAY ADMINISTRATION	
APPROVED	
DIVISION ADMINISTRATOR	DATE

THOMAS M. CUNNINGHAM
No. 6592
REGISTERED PROFESSIONAL ENGINEER (CIVIL)

COMMONWEALTH ENGINEERS & CONSULTANTS, INC.
400 SMITH STREET
PROVIDENCE, RI 02908

Contract Number 2017-CB-028
Volume Number 1
Number of Sheet 1
Total Sheets 17

R.I. STANDARD SPECIFICATIONS AND STANDARD DETAILS
SPECIFICATIONS TO GOVERN THIS PROJECT ARE THE R.I. STANDARD SPECIFICATIONS FOR ROAD AND BRIDGE CONSTRUCTION, AMENDED 2013, WITH ALL REVISIONS, AND THE STATE AND FEDERAL SPECIAL PROVISIONS INCLUDED IN THE CONTRACT DOCUMENTS. STANDARD DETAILS FOR THIS PROJECT ARE R.I. STANDARD DETAILS, 1998 EDITION, WITH ALL REVISIONS.

