

# INDEX

| SHEET NO. | DESCRIPTION  |
|-----------|--|
| 1         | COVER SHEET  |
| 2         | LIST OF ABBREVIATIONS                              |
| 3         | STANDARD PLAN SYMBOLS & STANDARD LEGEND            |
| 4         | EXISTING CONDITIONS PLAN                           |
| 5         | AREAS OF IMPACT TO REGULATED AREAS                 |
| 6         | GENERAL PLAN NO.1                                  |
| 7         | DRAINAGE AND UTILITY PLAN NO. 1                    |
| 8         | CROSS SECTIONS 01                                  |
| 9         | CROSS SECTIONS 02                                  |
| 10        | BRIDGE GENERAL PLAN AND LONGITUDINAL SECTION       |
| 11        | TYPICAL SECTIONS                                   |
| 12        | BRIDGE DEMOLITION AND EXCAVATION PLAN AND SECTIONS |
| 13        | EXISTING ABUTMENT DEMO AND PATCHING LIMITS         |
| 14        | CONCRETE REPAIR AND PATCHING DETAILS               |
| 15        | NORTH ABUTMENT SECTION AND ELEVATION               |
| 16        | SOUTH ABUTMENT SECTION AND ELEVATION               |

# STATE OF RHODE ISLAND

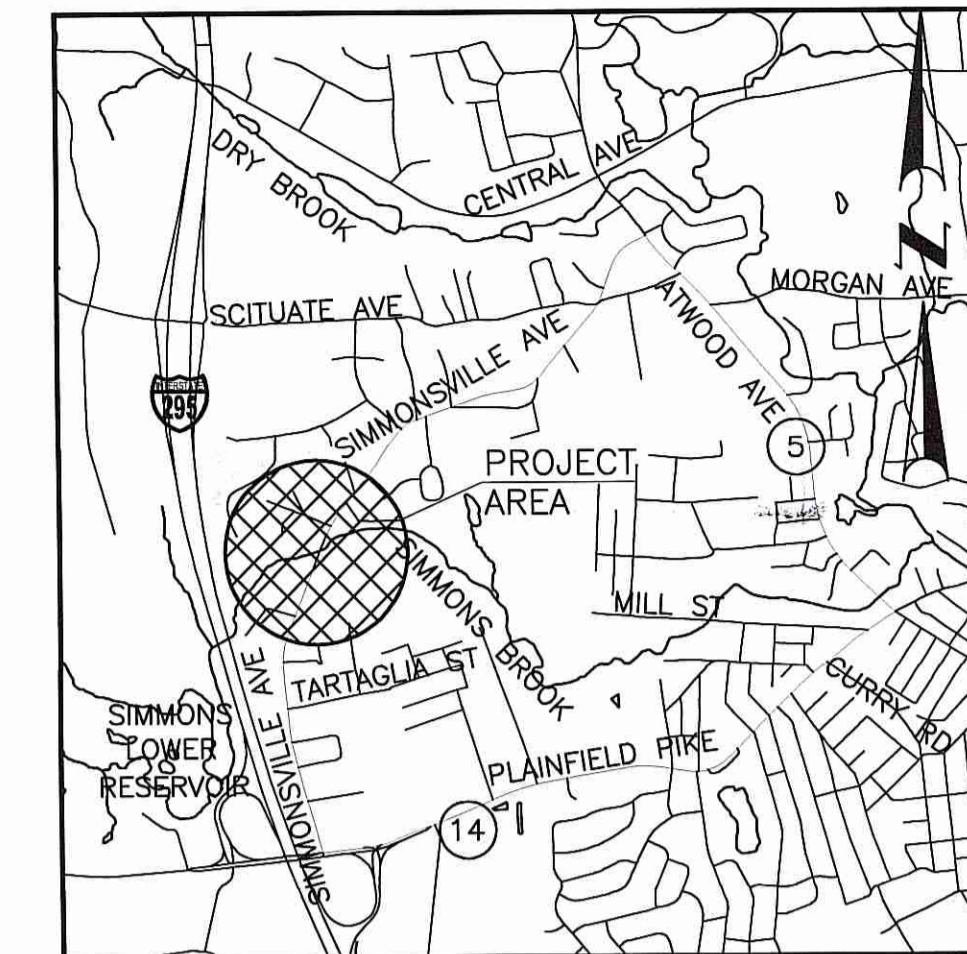


## DEPARTMENT OF TRANSPORTATION

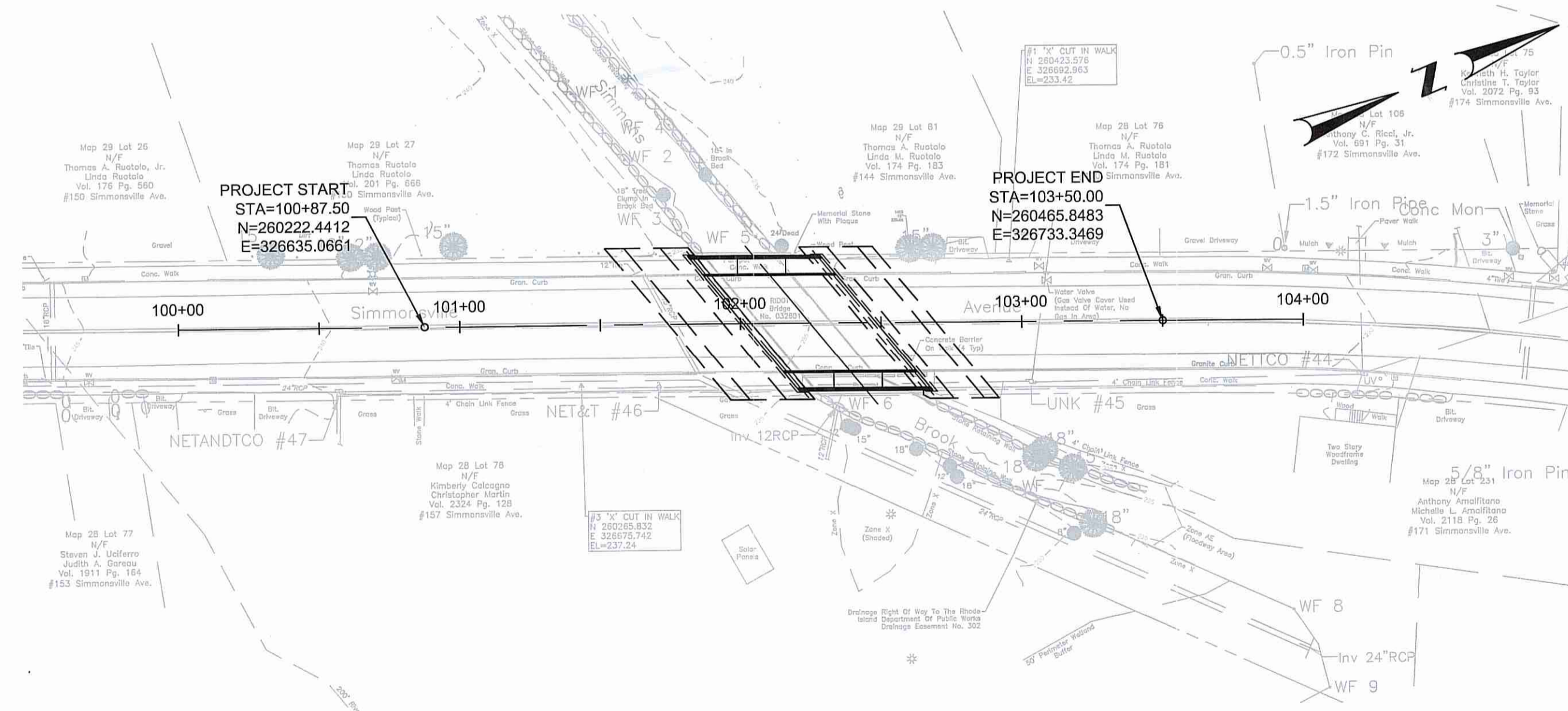
# PLAN, PROFILE AND SECTIONS OF PROPOSED REPLACEMENT OF SIMMONSVILLE BRIDGE OVER SIMMONS BROOK BRIDGE NO. 32601

TOWN OF JOHNSTON  
COUNTY OF PROVIDENCE

R.I. CONTRACT NO. 2016-CB-061 F.A. PROJECT NO. XXX-XXXX(XXX)



LOCATION MAP  
SCALE: 1" = 2000'



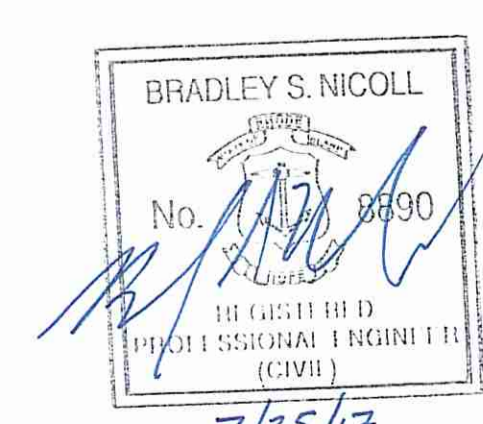
LAYOUT PLAN  
SCALE: 1" = 40'

**R.I. STANDARD SPECIFICATIONS AND STANDARD DETAILS**

SPECIFICATIONS TO GOVERN THIS PROJECT ARE THE R.I. STANDARD SPECIFICATIONS FOR ROAD AND BRIDGE CONSTRUCTION, 2013 EDITION, AND THE STATE AND FEDERAL SPECIAL PROVISIONS INCLUDED IN THE CONTRACT DOCUMENTS. STANDARD DETAILS FOR THIS PROJECT ARE R.I. STANDARD DETAILS, 2013 EDITION, WITH ALL REVISIONS.



*Charles A. Hubert*  
**PERMIT PLAN SHEETS**  
 SEP 6 2017 FILE # 17-0174  
 NOT BE RELEASED WITHOUT PRIOR APPROVAL  
 APPROVED PLANS MUST BE AT CONSTRUCTION SITE



|  |      |
|--|------|
| R.I. DEPARTMENT OF TRANSPORTATION                              |      |
| APPROVED   | DATE |
| DEPUTY CHIEF ENGINEER  | DATE |
| APPROVED   | DATE |
| CHIEF ENGINEER   | DATE |
| APPROVED   | DATE |
| DIRECTOR   | DATE |
| DEPARTMENT OF TRANSPORTATION<br>FEDERAL HIGHWAY ADMINISTRATION |      |
| APPROVED   | DATE |
| DIVISION ADMINISTRATOR   | DATE |

Contract Number 2016-CB-061  
 Number of Sheet 1  
 Total Sheets 16



BASE OF LEVELS  
NAVD 88  
NAVD 83 (2017)







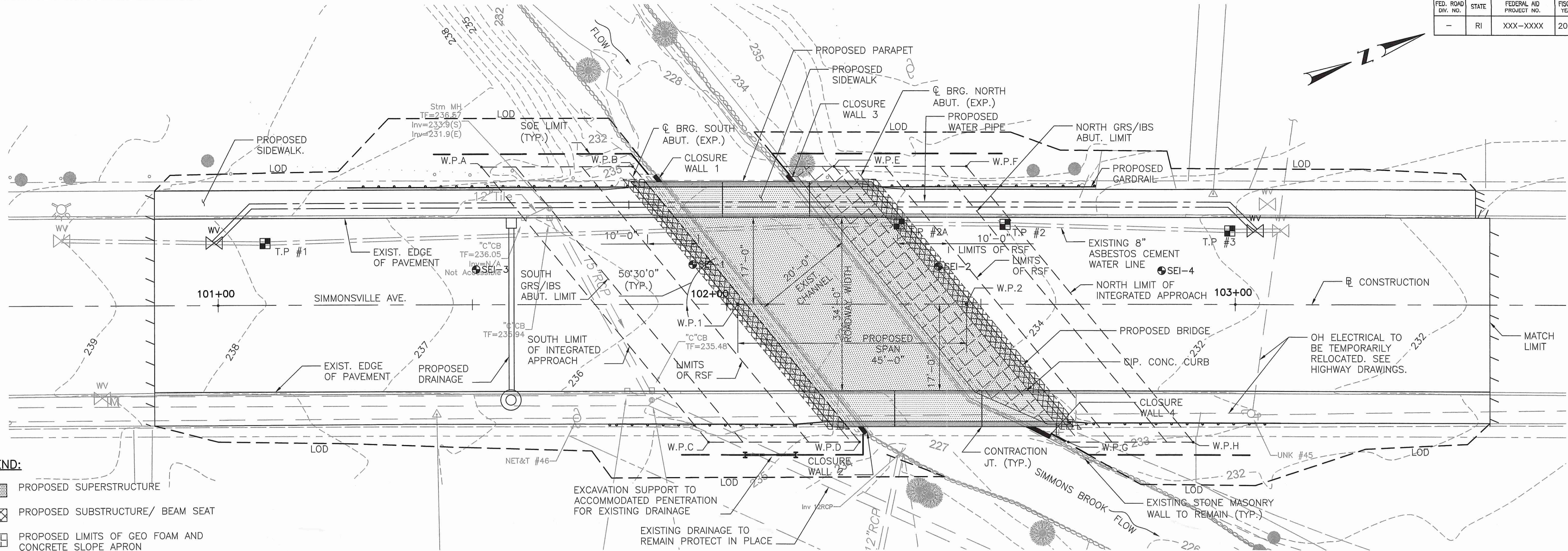












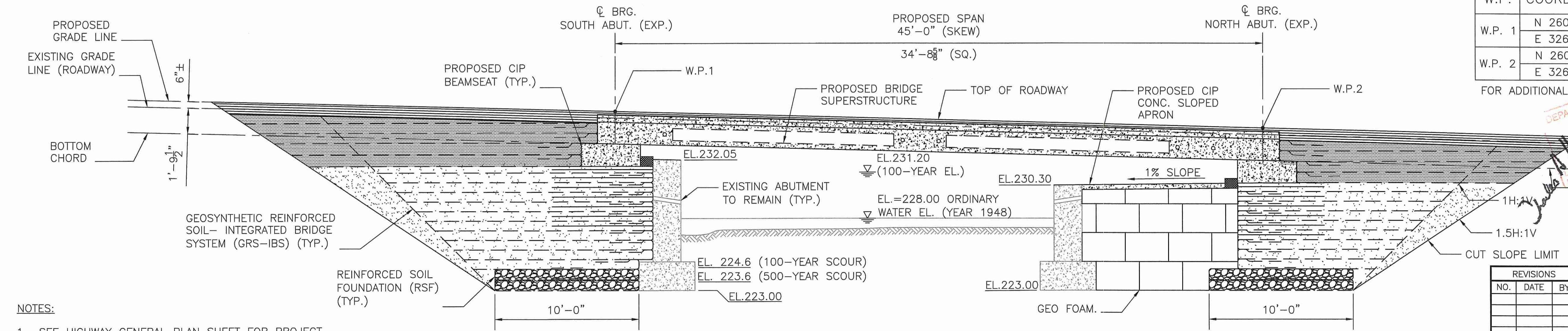
**LEGEND:**

- PROPOSED SUPERSTRUCTURE
- PROPOSED SUBSTRUCTURE/ BEAM SEAT
- PROPOSED LIMITS OF GEO FOAM AND CONCRETE SLOPE APRON
- SEI-X BORING LOCATION
- TP.# X TEST PIT LOCATION

**GENERAL PLAN**  
SCALE: 1"=10'-0"

| WORKING POINT COORDINATES AND STATIONS |             |           |        |           |
|--|-------------|-----------|--------|-----------|
| W.P.                                   | COORDINATES | STATION   | OFFSET | ELEVATION |
| W.P. 1                                 | N 260328.78 | 102+02.18 | 0.00'  | 235.42    |
|  | E 326678.00 |           |        |           |
| W.P. 2                                 | N 260370.51 | 102+47.18 | 0.00'  | 234.25    |
|  | E 326694.85 |           |        |           |

FOR ADDITIONAL WORKING POINTS SEE SHEETS 21



**LONGITUDINAL SECTION**  
SCALE: 1/4"=1'-0"

**NOTES:**

1. SEE HIGHWAY GENERAL PLAN SHEET FOR PROJECT LIMITS, AND ASSOCIATED WORK.
2. SEE EXCAVATION AND DEMOLITION SHEET FOR THE GRS/ EXCAVATION LIMIT WORKING POINTS TABLES.

**FLOW NOTES:**

1. 100-YEAR DESIGN FLOW = 400 CFS
2. 500-YEAR SCOUR DESIGN = 570 CFS

**PERMIT PLAN SHEETS**



| REVISIONS |      |    |
|-----------|------|----|
| NO.       | DATE | BY |
|           |      |    |
|           |      |    |
|           |      |    |
|           |      |    |
|           |      |    |
|           |      |    |
|           |      |    |
|           |      |    |
|           |      |    |

**RHODE ISLAND DEPARTMENT OF TRANSPORTATION**  
**REPLACEMENT OF SIMMONSVILLE BRIDGE NO. 032601**  
JOHNSTON, RHODE ISLAND

**BRIDGE GENERAL PLAN AND LONGITUDINAL SECTION**

CHECKED BY XX DATE XXXXXXXX SCALE XXX

BRADLEY S. NICOLL  
No. 0390  
Professional Engineer  
(CIVIL)  
7/25/17



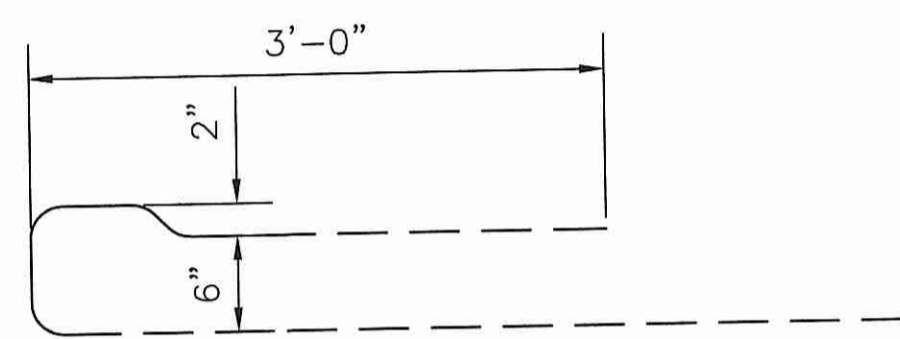
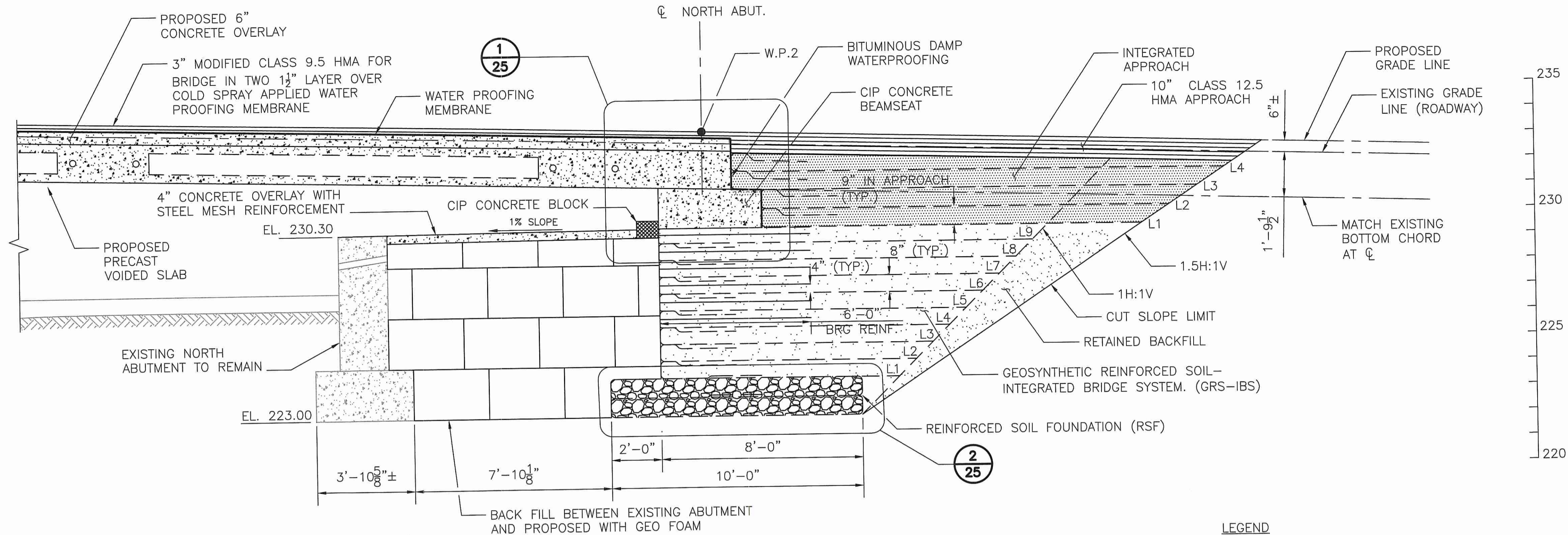






GEOTEXTILE REINF. LENGTH FOR NORTH ABUT.

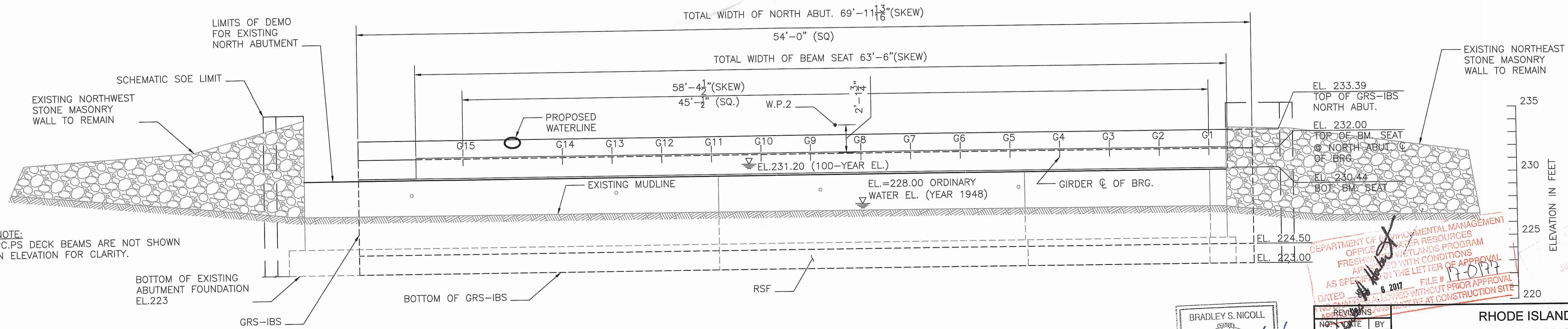
| GRS REINFORCEMENT |              | APPROACH REINFORCEMENT |              |
|-------------------|--------------|------------------------|--------------|
| LAYER             | TOTAL LENGTH | LAYER                  | TOTAL LENGTH |
| L1                | 13'-2"       | L1                     | 18'-10"      |
| L2                | 13'-10"      | L2                     | 20'-0"       |
| L3                | 14'-6"       | L3                     | 22'-3"       |
| L4                | 15'-2"       | L4                     | 23'-3"       |
| L5                | 15'-10"      | -                      | -            |
| L6                | 16'-6"       | -                      | -            |
| L7                | 17'-2"       | -                      | -            |
| L8                | 17'-10"      | -                      | -            |
| L9                | 21'-6"       | -                      | -            |



GEOTEXTILE REINFORCEMENT WRAP DETAIL  
 SCALE: 1"=1'-0"

NORTH ABUTMENT TYPICAL SECTION  
 SCALE: 3/8"=1'-0"

LEGEND  
 MAIN GRS REINFORCEMENT  
 INTERMEDIATE GRS REINFORCEMENT



NORTH ABUTMENT ELEVATION (ON SKEW)  
 SCALE: 1/4"=1'-0"

- NOTES:
- GRS-IBS SOIL SPECIFICATIONS:
    - INTEGRATED APPROACH: OPEN-GRADED BACKFILL
    - GRS AND RSF SOIL: OPEN-GRADED BACKFILL.
    - RETAINED BACKFILL: PERVIOUS FILL
  - GEOSYNTHETIC REINFORCEMENT AND BEARING REINFORCEMENT TO BE WINFAB 570 HP OR APPROVED EQUAL.
  - MAIN GRS REINFORCEMENT SPACED AT 8" VERTICALLY
  - INTERMEDIATE GRS REINFORCEMENT SPACED AT 4" VERTICALLY

- NOTES:
- THE CONTRACTOR SHALL BE RESPONSIBLE FOR THE GLOBAL STABILITY OF THE ABUTMENT DURING CONSTRUCTION AND THE INSTALLATION OF THE TEMPORARY EARTH RETAINING SYSTEM.
  - ELEVATIONS AND DIMENSION ARE SHOWN ALONG THE SKEW.

BRADLEY S. NICOLL  
 No. 8890  
 REGISTERED PROFESSIONAL ENGINEER (CIVIL)  
 7/25/17

PERMIT PLAN SHEETS



DEPARTMENT OF ENVIRONMENTAL MANAGEMENT  
 OFFICE OF WATER RESOURCES  
 FRESHWATER WETLANDS PROGRAM  
 APPROVED WITH CONDITIONS  
 AS SPECIFIED IN THE LETTER OF APPROVAL  
 DATED 6/20/17 FILE # 17-017  
 NO CHANGES ALLOWED WITHOUT PRIOR APPROVAL  
 NO WORK TO BE DONE AT CONSTRUCTION SITE

RHODE ISLAND  
 DEPARTMENT OF TRANSPORTATION  
 REPLACEMENT OF  
 SIMMONSVILLE BRIDGE  
 NO. 032601  
 JOHNSTON, RHODE ISLAND  
 NORTH ABUTMENT SECTION  
 AND ELEVATION

CHECKED BY XX DATE XXXXXXXX SCALE XXX

