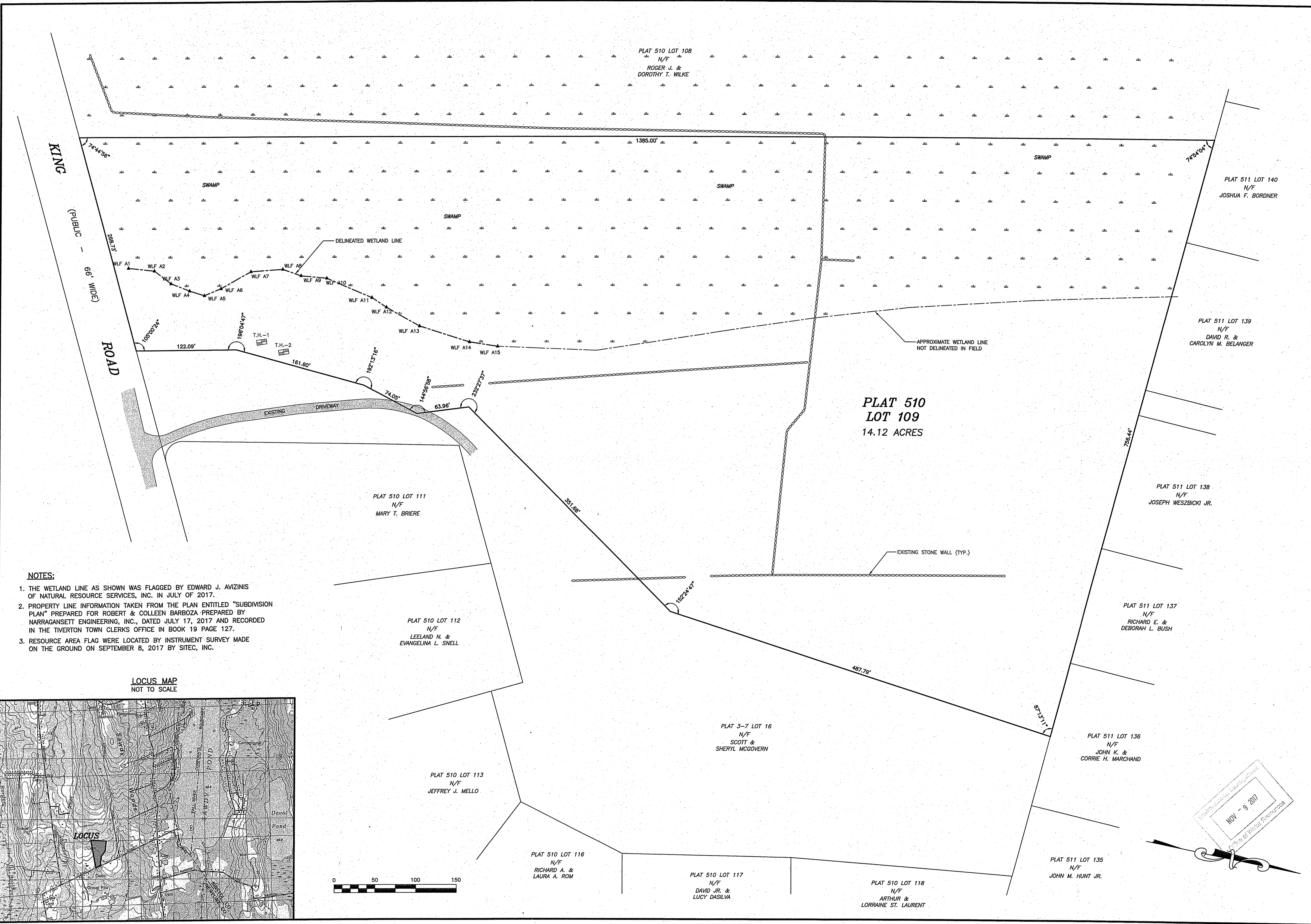


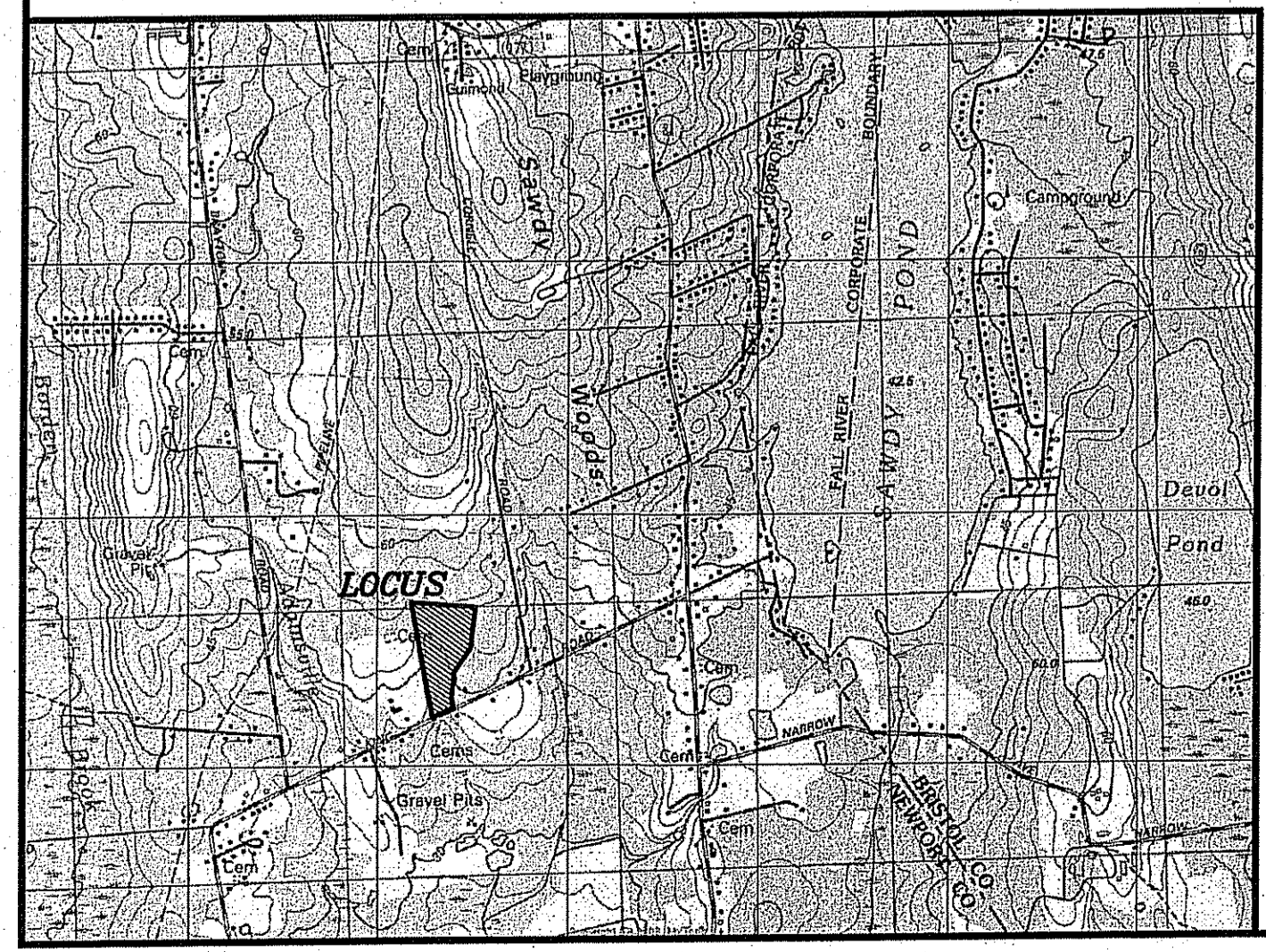
Chg.	Appd.	Revision Description	Date
SDG	SML	PER R.I.D.E.M. COMMENTS	10-10-17
SDG	SML	PER R.I.D.E.M. COMMENTS	11-8-17

No.	1" = 50'	9-20-17	JPT	SDG	1
1	scale:	date:	drawn:	checked:	sheet
2				approved:	of
					drawing number:
					WD-1



- NOTES:**
1. THE WETLAND LINE AS SHOWN WAS FLAGGED BY EDWARD J. AVIZINIS OF NATURAL RESOURCE SERVICES, INC. IN JULY OF 2017.
 2. PROPERTY LINE INFORMATION TAKEN FROM THE PLAN ENTITLED "SUBDIVISION PLAN" PREPARED FOR ROBERT & COLLEEN BARBOZA PREPARED BY NARRAGANSETT ENGINEERING, INC., DATED JULY 17, 2017 AND RECORDED IN THE TIVERTON TOWN CLERKS OFFICE IN BOOK 19 PAGE 127.
 3. RESOURCE AREA FLAG WERE LOCATED BY INSTRUMENT SURVEY MADE ON THE GROUND ON SEPTEMBER 8, 2017 BY SITEC, INC.

LOCUS MAP
NOT TO SCALE



PROJECT: ASSESSORS PLAT 510 LOT 109
267 KING ROAD
TIVERTON, RHODE ISLAND

CLIENT: ROBERT & COLLEEN BARBOZA

DRAWING TITLE: WETLAND DELINEATION PLAN

SITEC, Inc.
449 Fausch Corner Road
Dartmouth, MA 02747
(603) 998-2125
FAX (603) 998-7954

SITEC
Civil and Environmental Engineering
Land Use Planning

Acad No. 17- _WD.DWG
Job No. 17-

