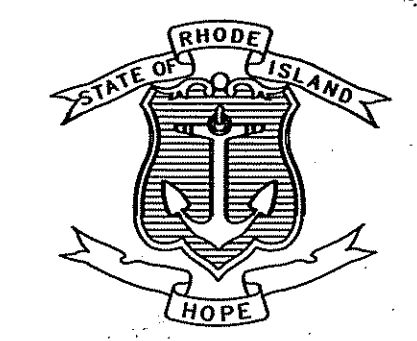


FED. ROAD DIV. NO.	STATE	FEDERAL AID PROJECT NO.	FISCAL YEAR	SHEET NO.	TOTAL SHEETS
	RI		2017	1	7

INDEX

SHEET NO.	DESCRIPTION
1	COVER SHEET
2	IMPERVIOUS NET PLAN
3-6	SWPPP 1-4
7	DETAILS

STATE OF RHODE ISLAND

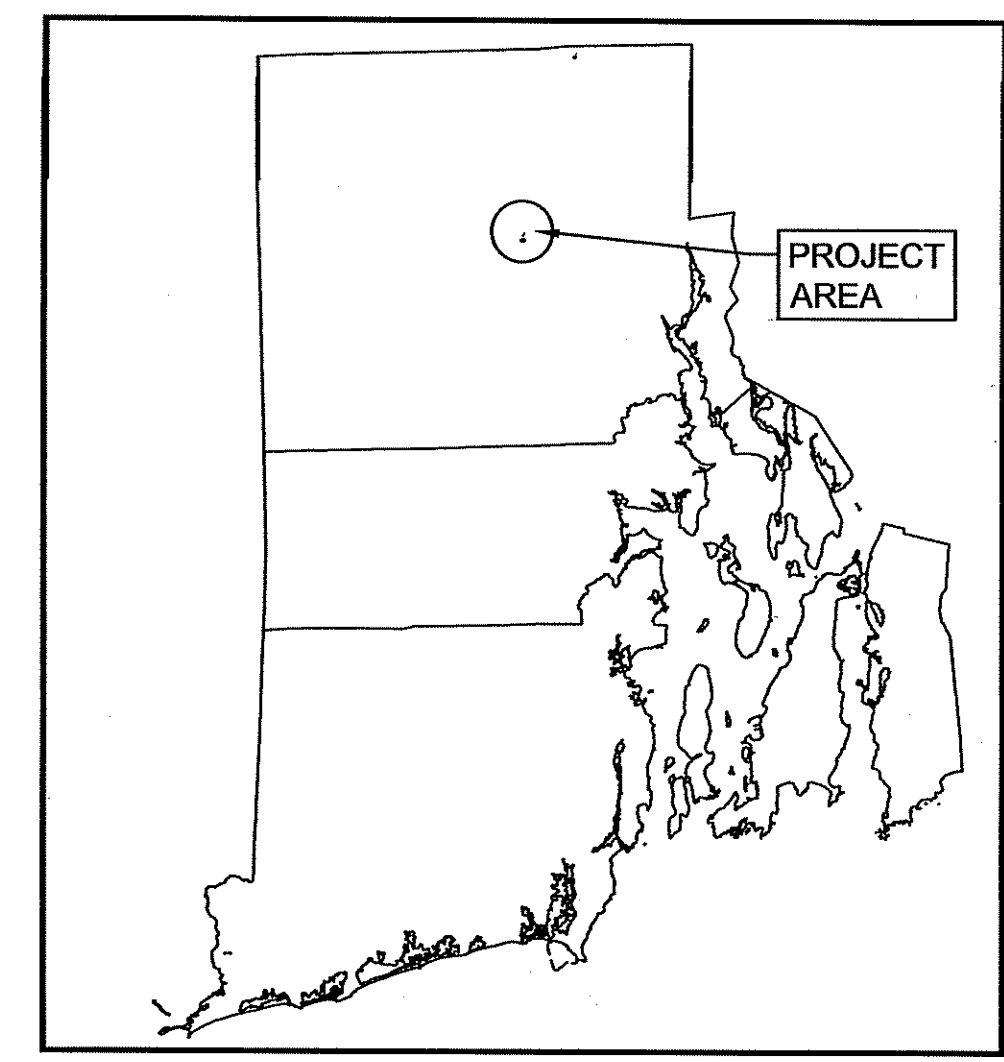


DEPARTMENT OF TRANSPORTATION

TRAFFIC SAFETY IMPROVEMENTS

STATE HIGHWAY

SAFE ROUTES TO SCHOOL CONTRACT NO. 3



LOCATION MAP
NTS

PROJECT LIMITS

TOWN OF SMITHFIELD
COUNTY OF PROVIDENCE

R.I. CONTRACT NO. 2018-CT-0410 F.A. PROJECT NO. XXX-XXXX(XXX)

PROJECT LENGTH = 0.5 MILES

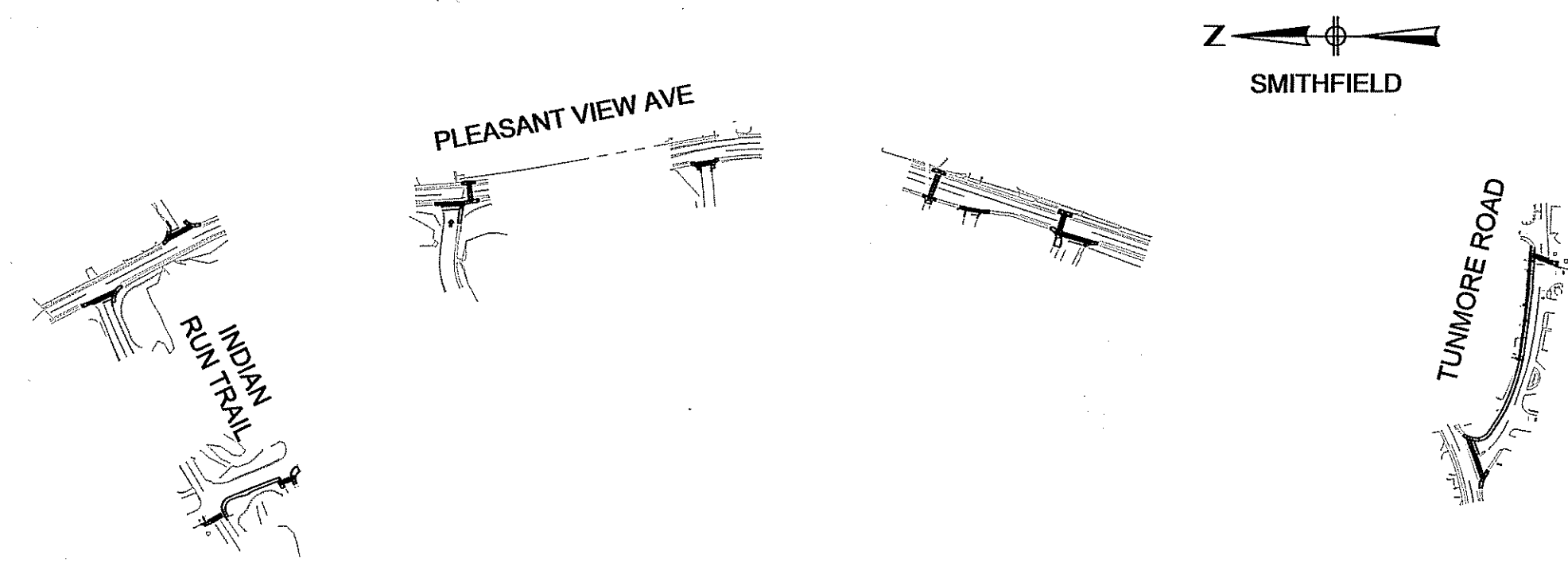
PAVEMENT STRUCTURE

2-IN. MICRO-MILLING AND 2-IN. OVERLAY -
MODIFIED CLASS 12.5 HOT MIX ASPHALT

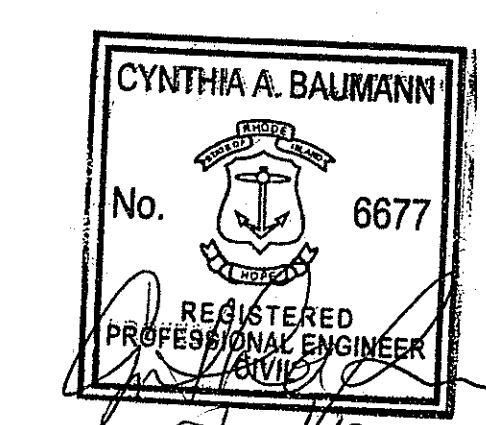


DEPARTMENT OF ENVIRONMENTAL MANAGEMENT
OFFICE OF WATER RESOURCES
FRESHWATER WETLANDS PROGRAM
APPROVED WITH CONDITIONS
AS SPECIFIED IN THE LETTER OF APPROVAL
DATED JUL 2 2018 FILE # 18-0116
NO CHANGES ALLOWED WITHOUT PRIOR APPROVAL
APPROVED PLANS MUST BE AT CONSTRUCTION SITE

**DRAFT
(NOT FOR
CONSTRUCTION)
MAY 2018**



LAYOUT PLAN
1"=200'



5/18/18

R.I. STANDARD SPECIFICATIONS AND STANDARD DETAILS

SPECIFICATIONS TO GOVERN THIS PROJECT ARE THE R.I. STANDARD SPECIFICATIONS FOR ROAD AND BRIDGE CONSTRUCTION, AMENDED AUGUST 2013, WITH ALL REVISIONS AND THE STATE AND FEDERAL SPECIAL PROVISIONS INCLUDED IN THE CONTRACT DOCUMENTS. STANDARD DETAILS FOR THIS PROJECT ARE R.I. STANDARD DETAILS, 1998 EDITION, WITH ALL REVISIONS.

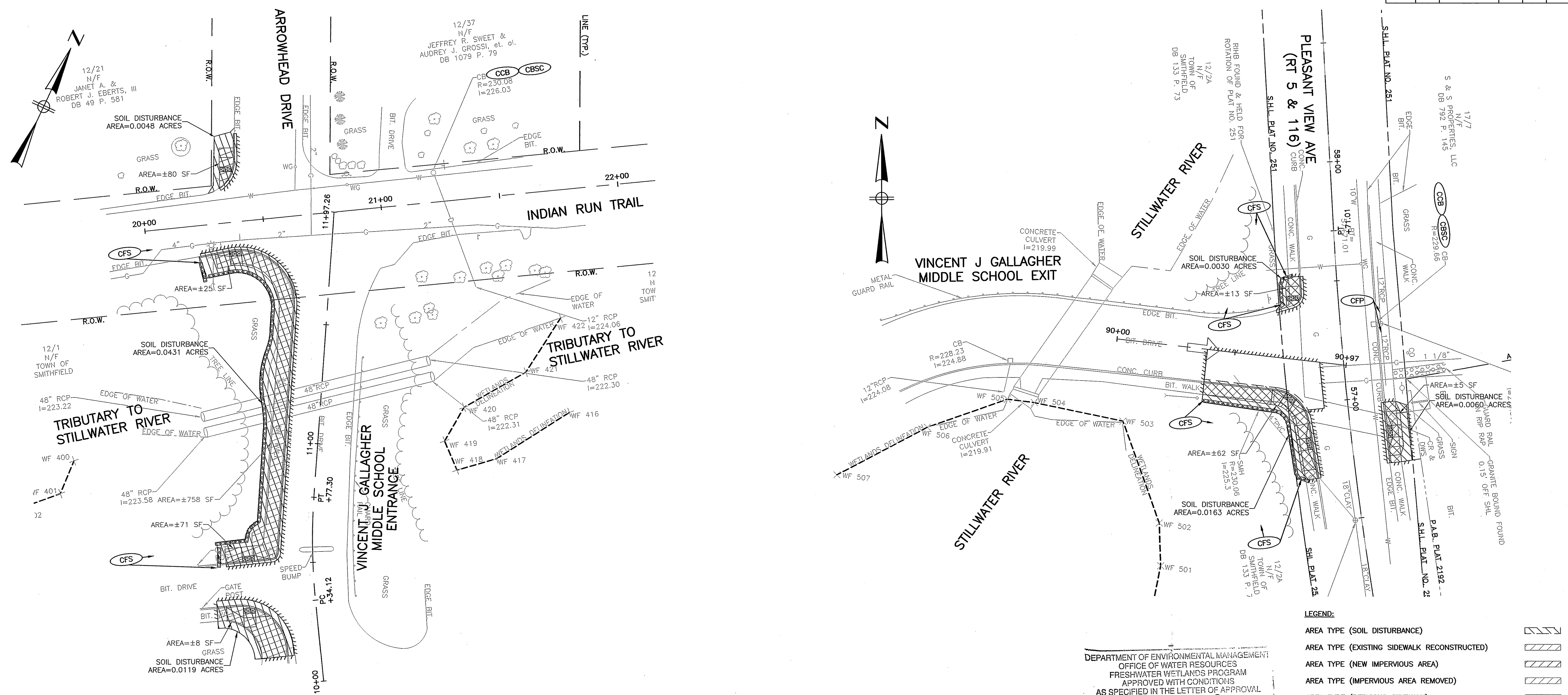
SCALES OF DRAWINGS
Plans 1 inch = 20 feet

BASE OF LEVELS
NAVD 88 VERTICAL
NAD 83(2011) EPOCH 2010.00



Contract Number XX
Number of Sheet 1
Total Sheets 7

R.I. DEPARTMENT OF TRANSPORTATION	
APPROVED	
Administrator, Project Management	DATE
APPROVED	
Chief Engineer of Infrastructure	DATE
APPROVED	
Director	DATE
DEPARTMENT OF TRANSPORTATION FEDERAL HIGHWAY ADMINISTRATION	
APPROVED	
DIVISION ADMINISTRATOR	DATE

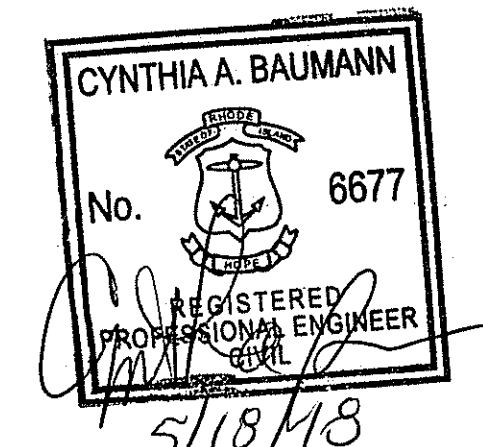
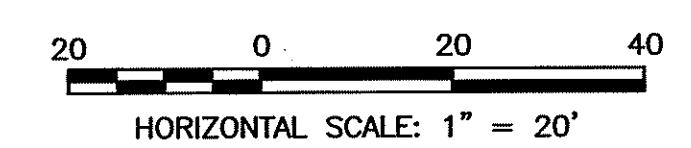


DEPARTMENT OF ENVIRONMENTAL MANAGEMENT
 OFFICE OF WATER RESOURCES
 FRESHWATER WETLANDS PROGRAM
 APPROVED WITH CONDITIONS
 AS SPECIFIED IN THE LETTER OF APPROVAL
 DATED JUL 2 2018 FILE # 18-0116
 NO CHANGES ALLOWED WITHOUT PRIOR APPROVAL
 APPROVED PLANS MUST BE AT CONSTRUCTION SITE

Charles A. Hales

- LEGEND:**
- AREA TYPE (SOIL DISTURBANCE) [Hatched pattern]
 - AREA TYPE (EXISTING SIDEWALK RECONSTRUCTED) [Diagonal lines]
 - AREA TYPE (NEW IMPERVIOUS AREA) [Diagonal lines]
 - AREA TYPE (IMPERVIOUS AREA REMOVED) [Diagonal lines]
 - AREA TYPE (PERVIOUS SIDEWALK) [White box]
 - CATCH BASIN SEDIMENTATION CONTROL (CBSC) [Circle with CBSC]
 - CLEAN AND FLUSH PIPE (CFP) [Circle with CFP]
 - CLEAN CATCH BASIN (CCB) [Circle with CCB]
 - COMPOST FILTER SOCK (CFS) [Circle with CFS]
 - WETLAND FLAGGING (WF XX) [Line with WF XX]

NOTES:
 1. WORK ON THIS SHEET IS LOCATED WITHIN THE 200' RIVERBANK WETLAND. THE REMAINING WORK ILLUSTRATED IS CONSIDERED MAINTENANCE WORK ON EXISTING SIDEWALKS AND IS AN EXEMPT ACTIVITY UNDER RULE 6.03.



CDM Smith
 200 West Exchange Street, Suite 300
 Providence, RI 02903
 Tel: (401) 751-5360

REVISIONS		
NO.	DATE	BY

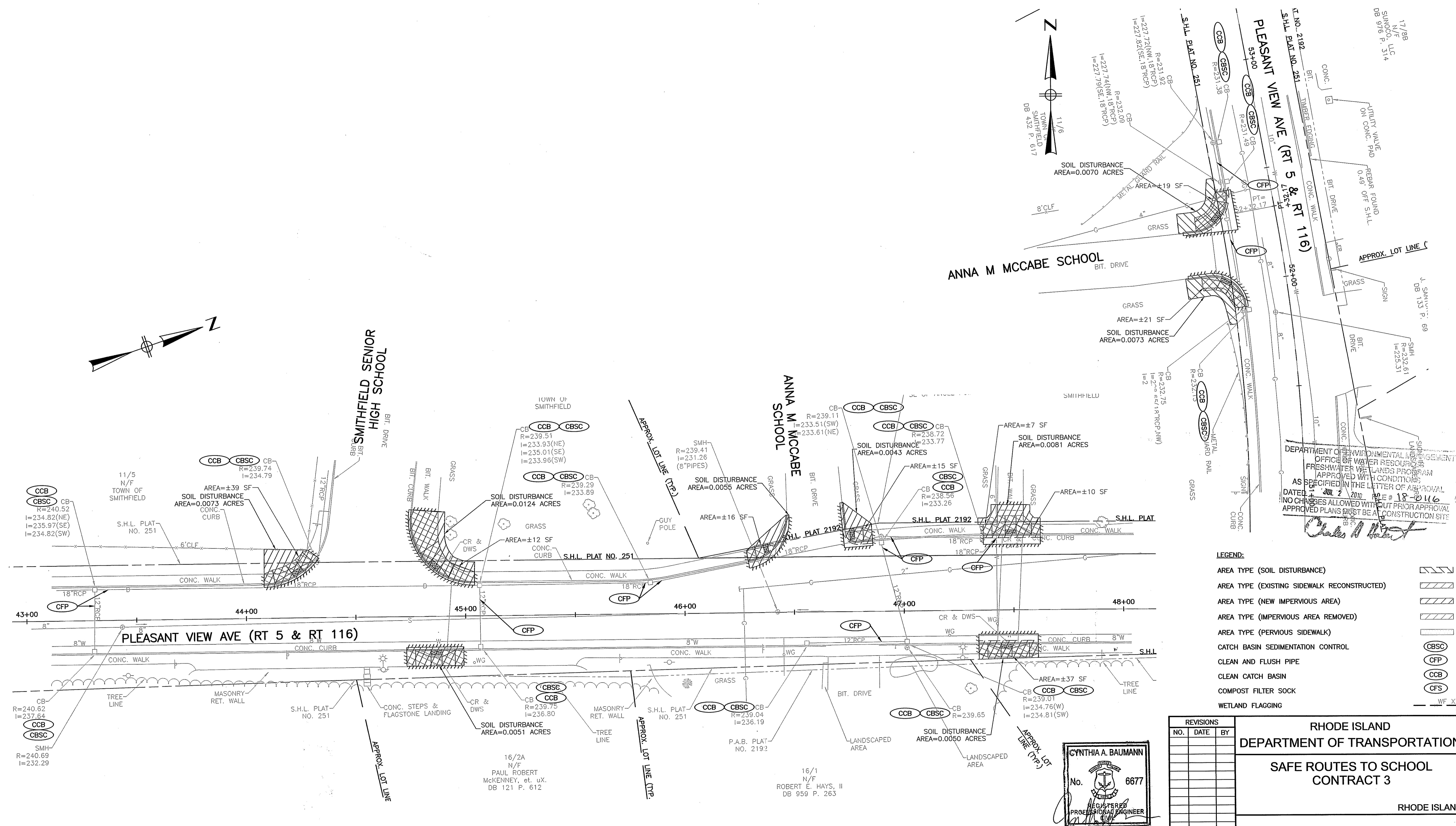
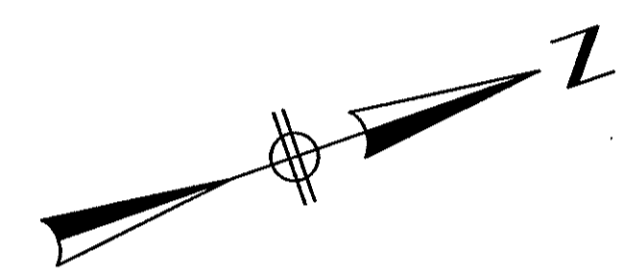
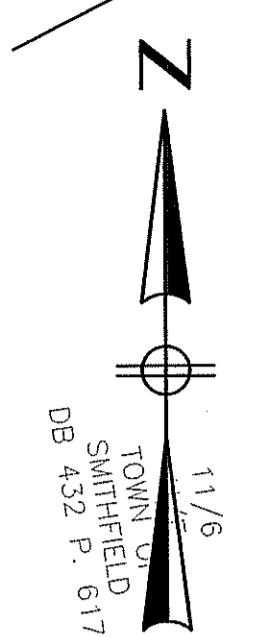
RHODE ISLAND DEPARTMENT OF TRANSPORTATION

SAFE ROUTES TO SCHOOL CONTRACT 3

RHODE ISLAND

SWPPP 1 SMITHFIELD

CHECKED BY LDS DATE 04-2018 SCALE 1"=20'



DEPARTMENT OF ENVIRONMENTAL MANAGEMENT
 OFFICE OF WATER RESOURCES
 FRESHWATER WETLANDS PROGRAM
 APPROVED WITH CONDITIONS
 AS SPECIFIED IN THE LETTER OF APPROVAL
 DATED 10/2/2018 FILE # 18-016
 NO CHANGES ALLOWED WITHOUT PRIOR APPROVAL
 APPROVED PLANS MUST BE AT CONSTRUCTION SITE

LEGEND:

AREA TYPE (SOIL DISTURBANCE)	
AREA TYPE (EXISTING SIDEWALK RECONSTRUCTED)	
AREA TYPE (NEW IMPERVIOUS AREA)	
AREA TYPE (IMPERVIOUS AREA REMOVED)	
AREA TYPE (PERVIOUS SIDEWALK)	
CATCH BASIN SEDIMENTATION CONTROL	
CLEAN AND FLUSH PIPE	
CLEAN CATCH BASIN	
COMPOST FILTER SOCK	
WETLAND FLAGGING	

REVISIONS		
NO.	DATE	BY

RHODE ISLAND
DEPARTMENT OF TRANSPORTATION

SAFE ROUTES TO SCHOOL
CONTRACT 3

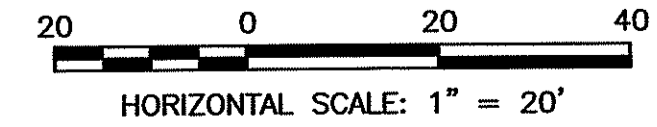
RHODE ISLAND

SWPPP 3
SMITHFIELD

CHECKED BY LDS DATE 04-2018 SCALE 1"=20'

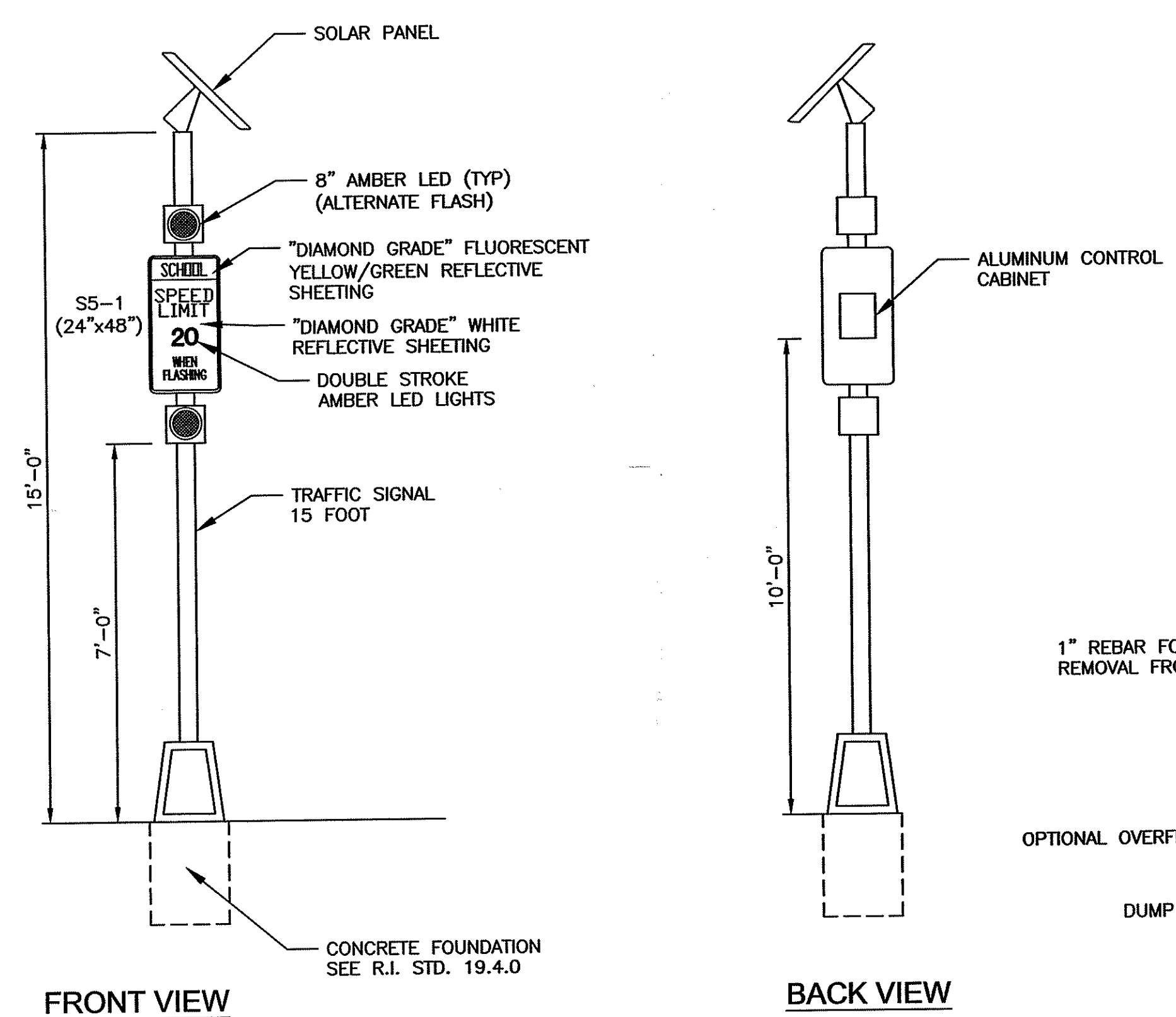
CYNTHIA A. BAUMANN
 No. 6677
 REGISTERED PROFESSIONAL ENGINEER

CDM Smith
 260 West Exchange Street, Suite 300
 Providence, RI 02903
 Tel: (401) 751-5360



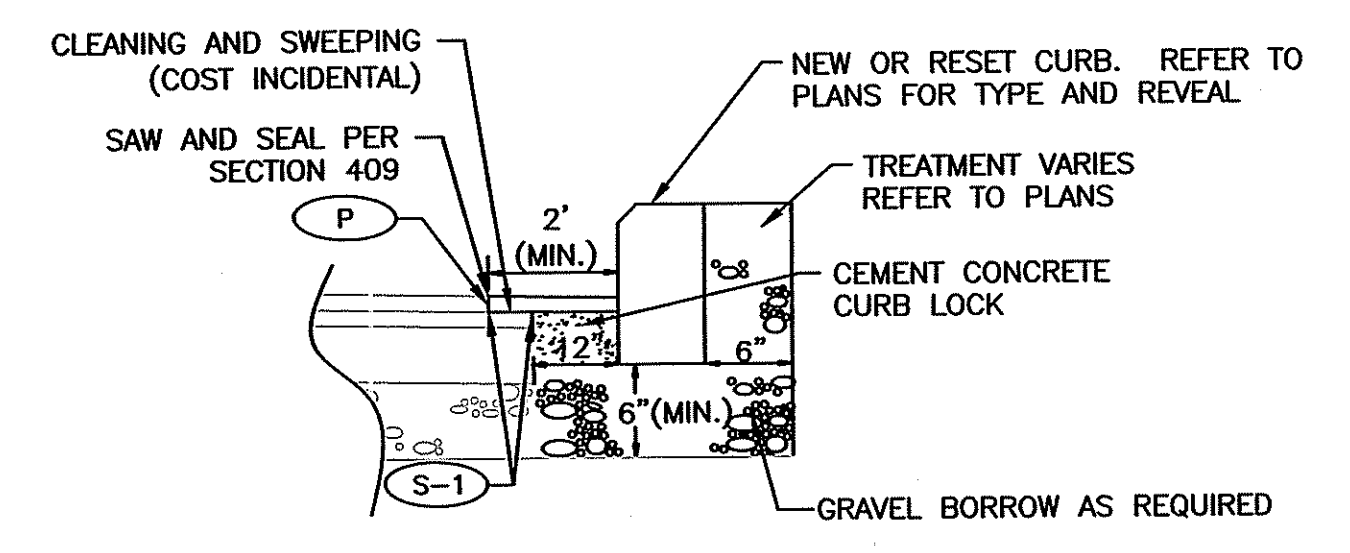
16/2A
 N/F
 PAUL ROBERT
 MCKENNEY, et. ux.
 DB 121 P. 612

16/1
 N/F
 ROBERT E. HAYS, II
 DB 959 P. 263



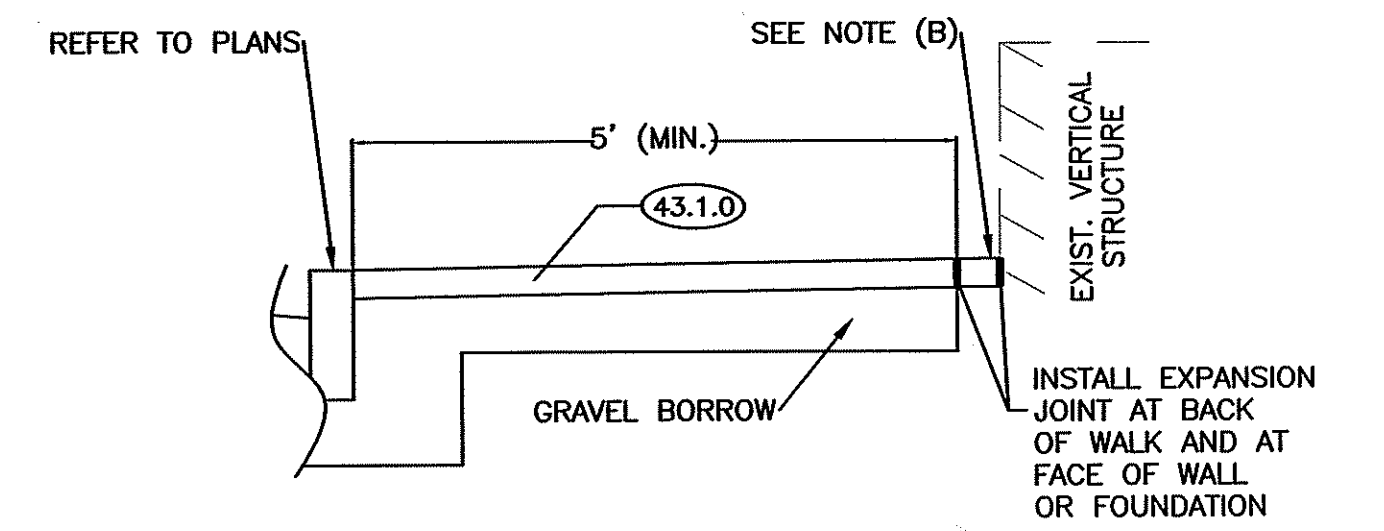
- NOTES:
- FLASHING SCHOOL ZONE SIGNS SHALL BE SOLAR POWERED AND WIRELESS ACTIVATED.
 - CONTRACTOR SHALL REFER TO RHODE ISLAND DEPARTMENT OF TRANSPORTATION STANDARD DETAIL 19.4.0 FOR PEDESTAL POLE INSTALLATION.
 - CONTRACTOR SHALL REFER TO JOB SPECIFIC ITEM FOR SCHOOL ZONE SIGN ASSEMBLY.

FLASHING SCHOOL ZONE SIGN ASSEMBLY
NOT TO SCALE



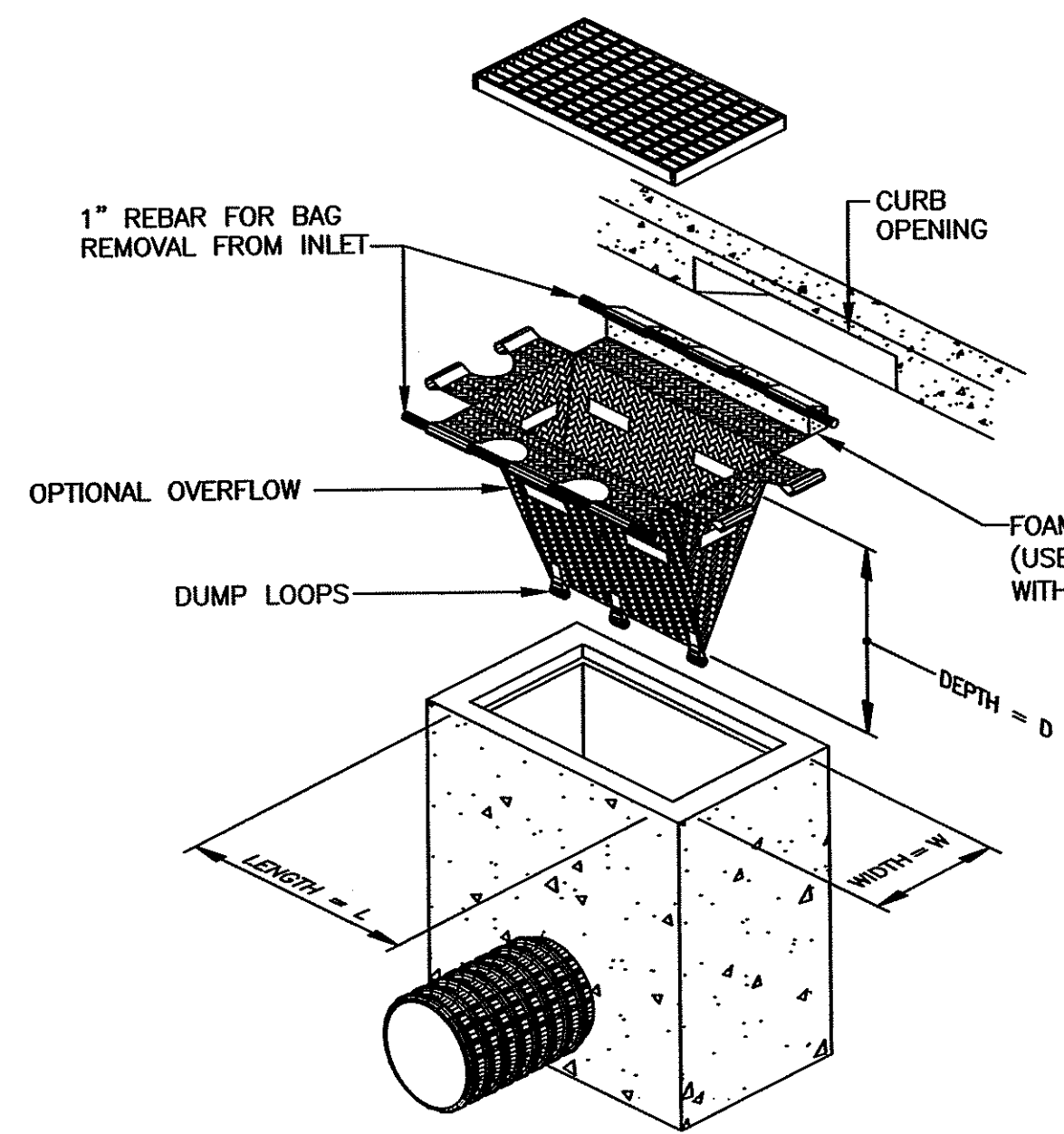
CURB SETTING/RESETTING DETAIL
NOT TO SCALE

- NOTES:
- SHALL BE IN ACCORDANCE WITH SECTION 906 OF THE R.I. STANDARD SPECIFICATIONS.
 - IN AREAS WHERE ROADWAY IS TO BE MILLED AND OVERLAYED REFER TO RIDOT STD 7.6.0.

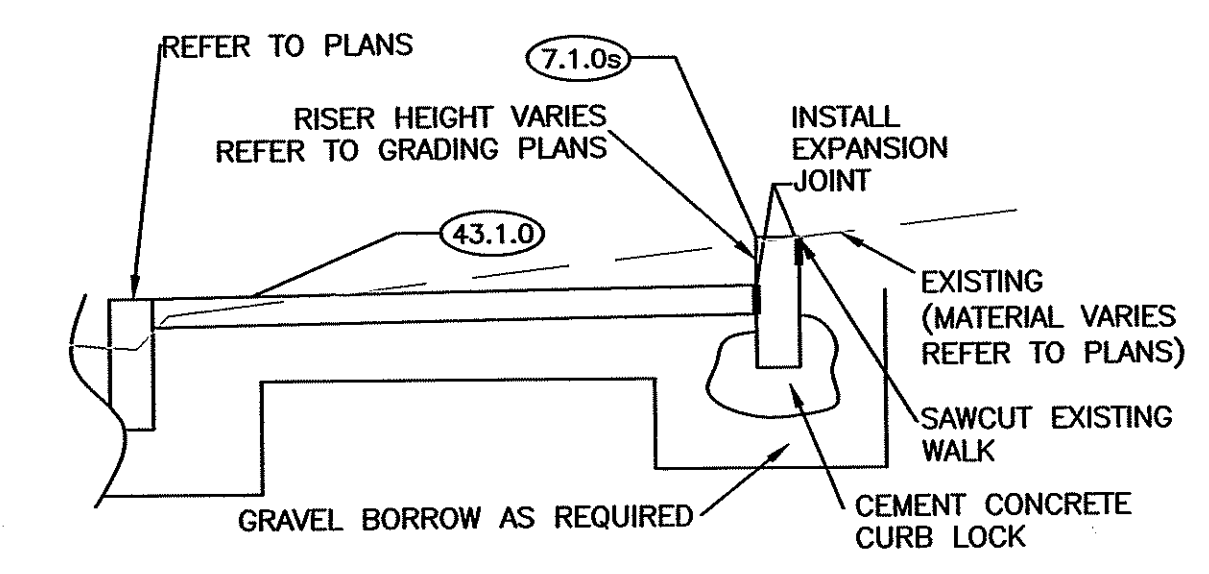


- (A) REFER TO PLANS FOR LIMITS OF WORK
- (B) WHERE THE PROPOSED BACK OF WALK ELEVATION IS HIGHER THAN EXISTING GRADE AT FACE OF WALL/STRUCTURE, UNLESS OTHERWISE REQUIRED BY ENGINEER, BACK OF WALK FILL SHALL BE 4" 4000 PSI, 3/4" 610 CEM. CONC. GRADED TO DRAIN TOWARD SIDEWALK. INSTALL EXPANSION JOINT AT THE BACK OF WALK AND THE FACE OF THE WALL OR FOUNDATION. NO REMOVAL OF MATERIAL WITHIN 6" OF WALLS SHALL BE PERMITTED WITHOUT PRIOR APPROVAL FROM ENGINEER.

CEMENT CONCRETE SIDEWALK AT OR NEAR VERTICAL STRUCTURE
NOT TO SCALE

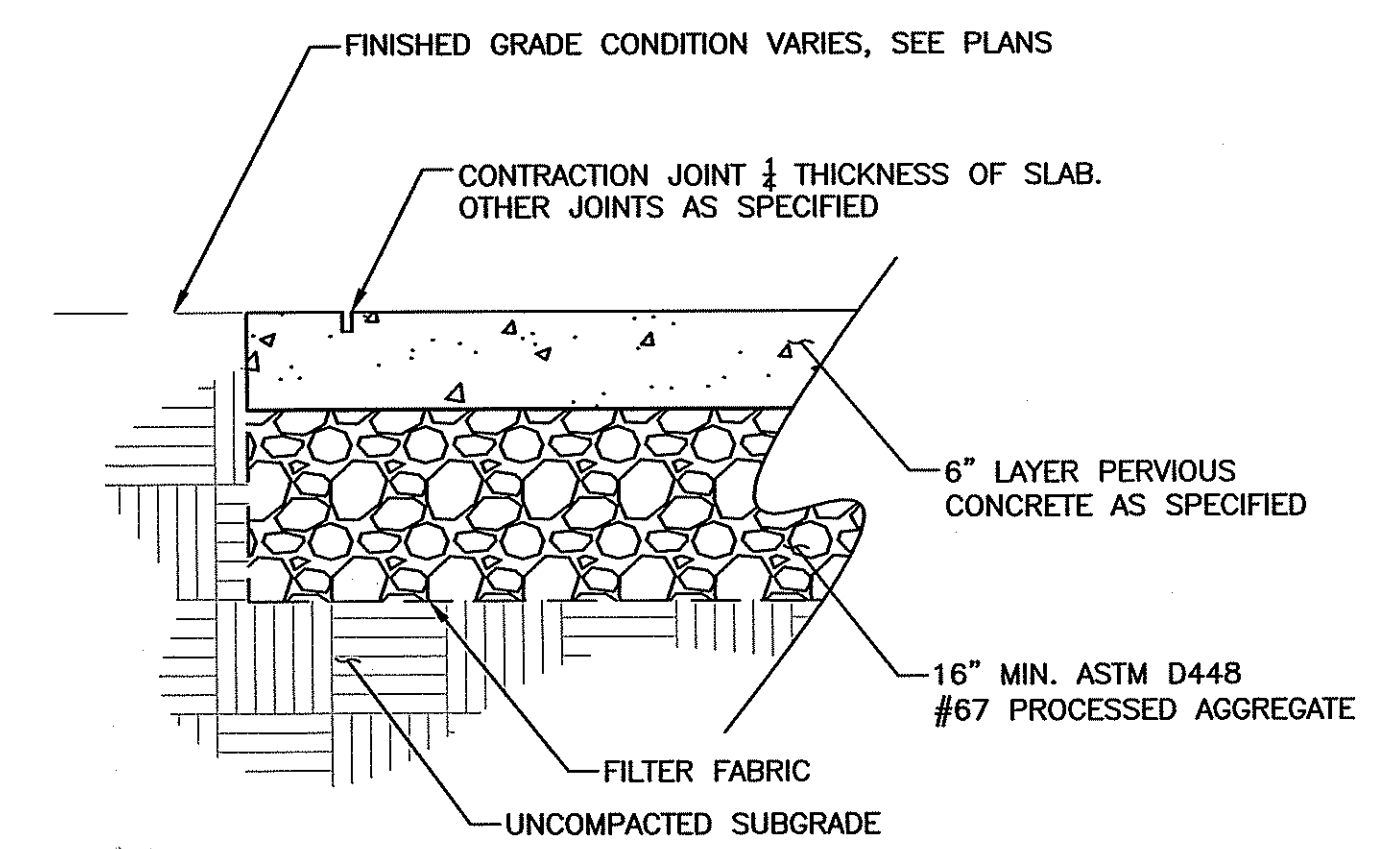


CBSC CATCH BASIN SEDIMENTATION CONTROL
NOT TO SCALE

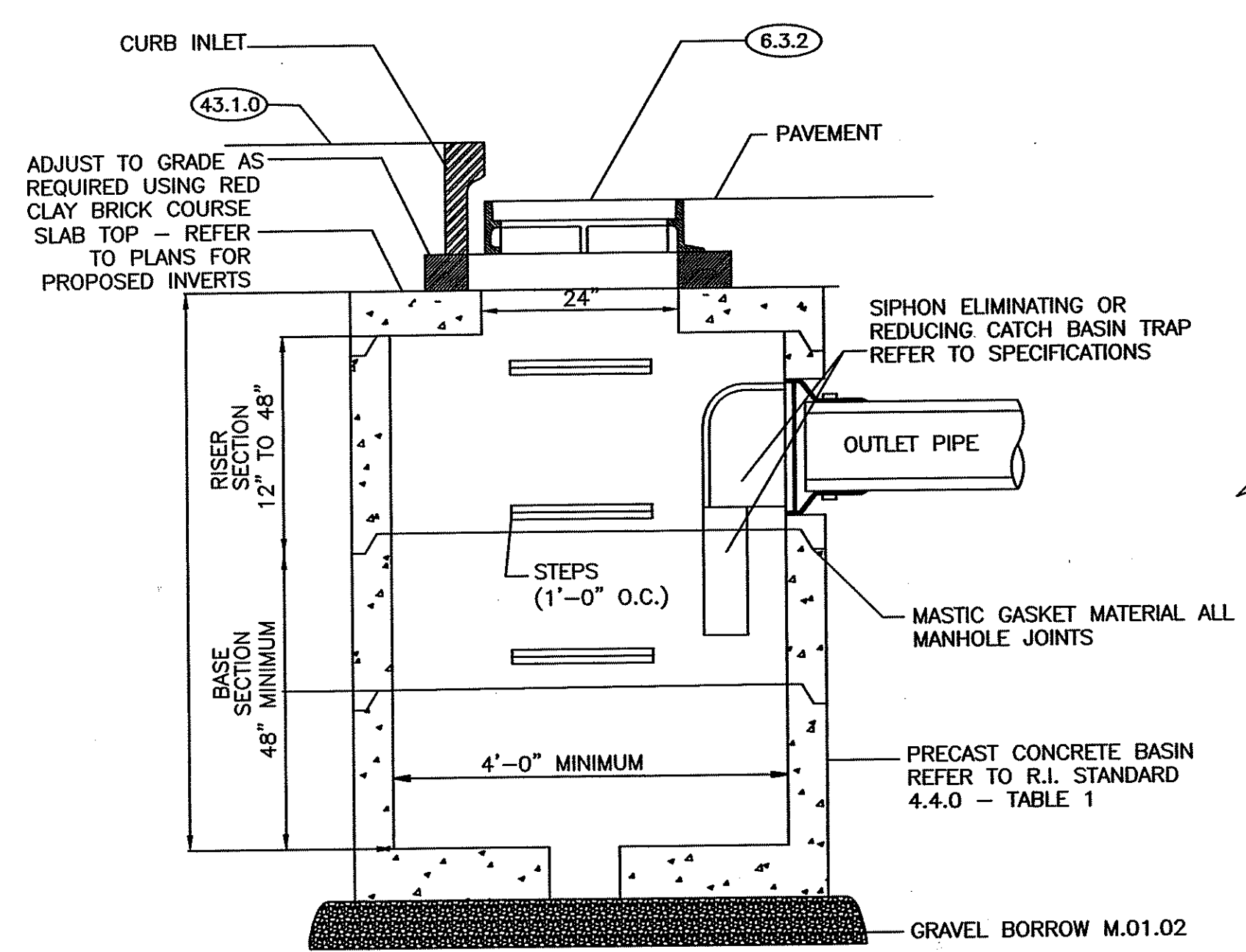


GRANITE CURB STEP OR WALL (BACK OF SIDEWALK)
NOT TO SCALE

- NOTES:
- RISER HEIGHT SHALL BE IN ACCORDANCE WITH R.I. BUILDING CODE.

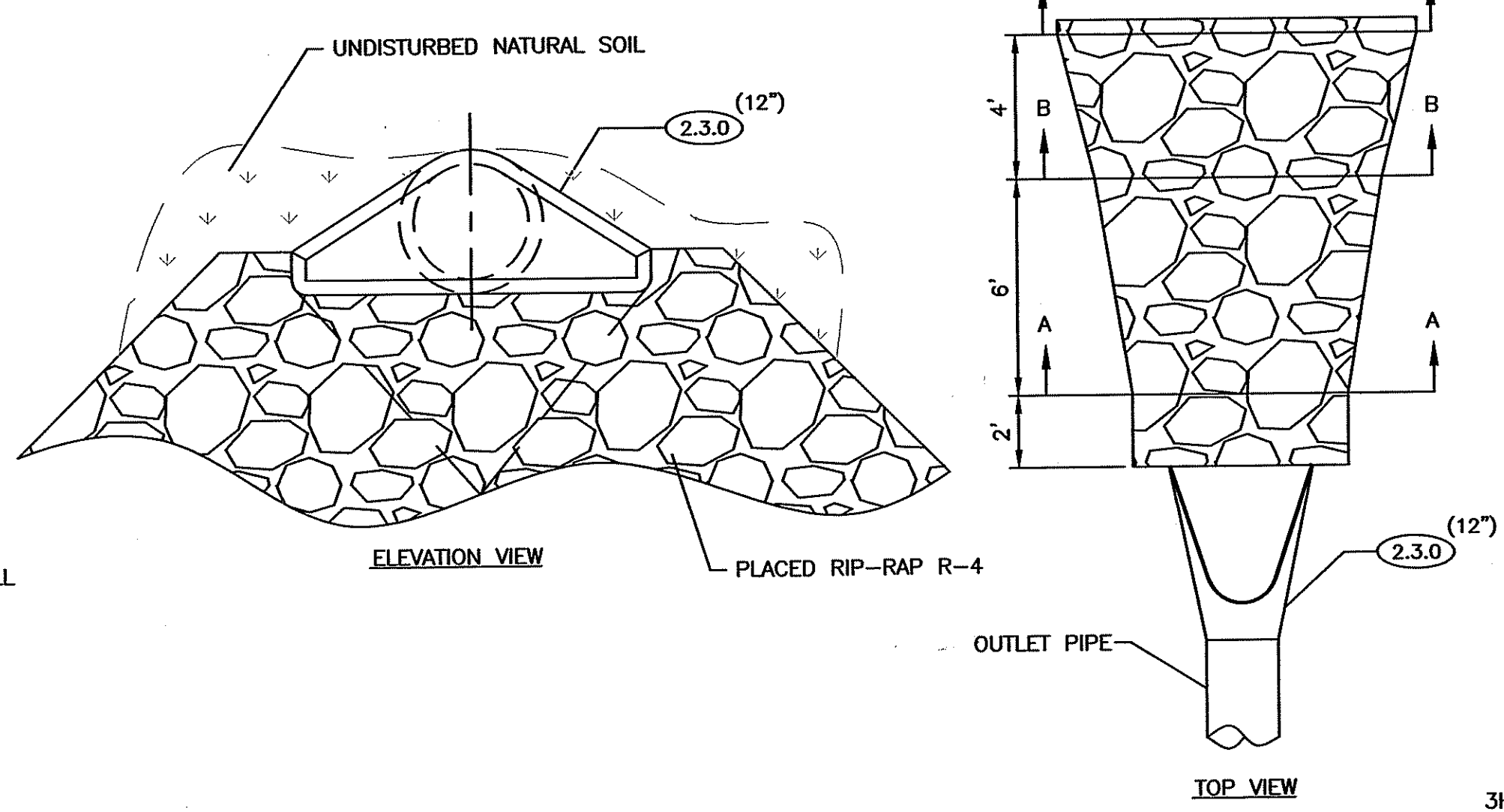


PERVIOUS CONCRETE SIDEWALK
NOT TO SCALE



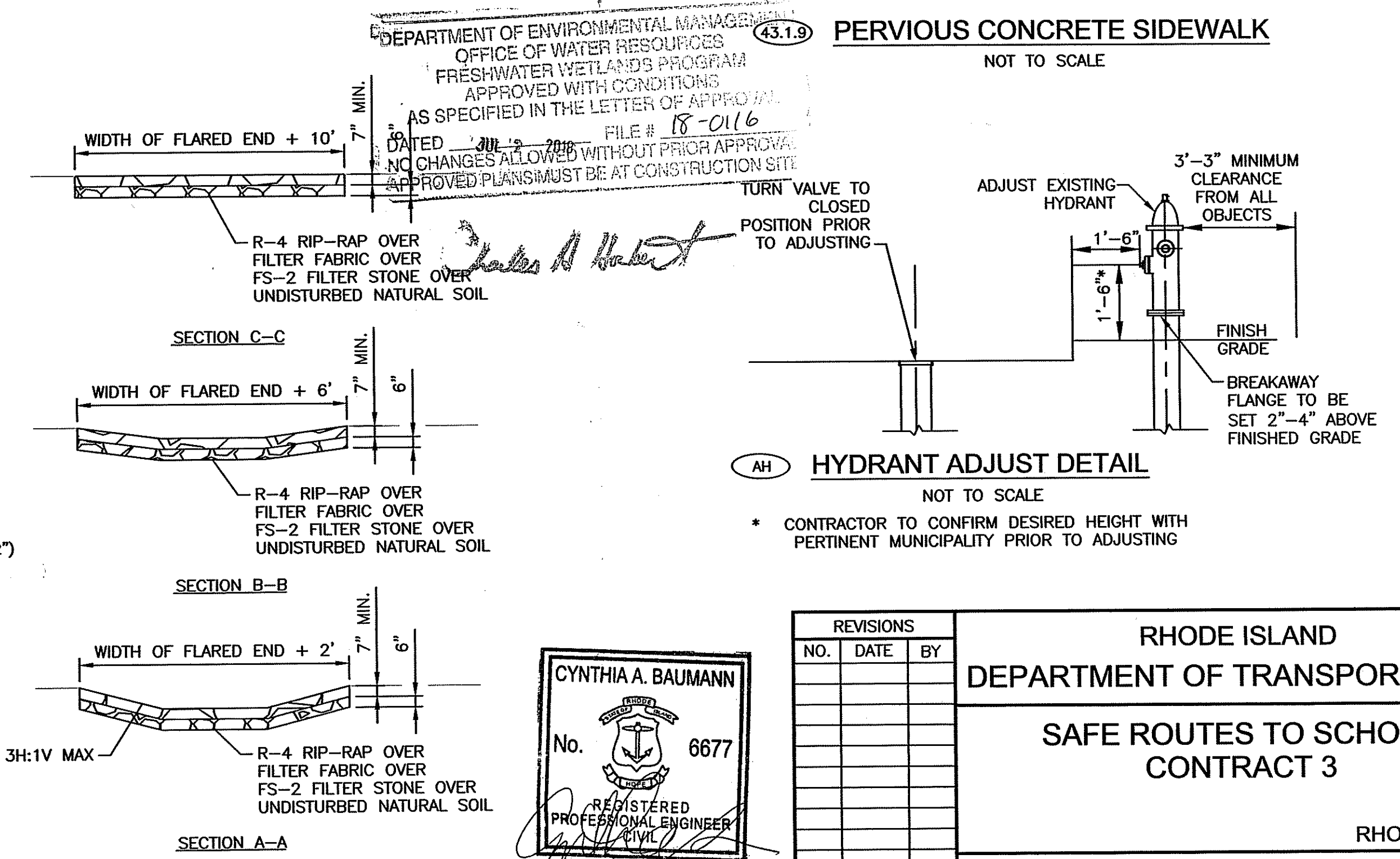
NOTE: ALL MATERIAL PER R.I.D.O.T. APPROVED MATERIALS LIST

PRECAST DEEP SUMP CATCH BASIN (PDSB)
NOT TO SCALE



- NOTES:
- CLEARING AND GRUBBING AS REQUIRED
 - RIP-RAP SHALL NOT EXTEND BEYOND WETLAND DELINEATION

FLARED END WITH RIP-RAP APRON (FERA)
NOT TO SCALE



AH HYDRANT ADJUST DETAIL
NOT TO SCALE

- * CONTRACTOR TO CONFIRM DESIRED HEIGHT WITH PERTINENT MUNICIPALITY PRIOR TO ADJUSTING

DEPARTMENT OF ENVIRONMENTAL MANAGEMENT
OFFICE OF WATER RESOURCES
FRESHWATER WETLANDS PROGRAM
APPROVED WITH CONDITIONS
AS SPECIFIED IN THE LETTER OF APPROVAL
DATE: 2/12/2016 FILE # 18-016
NO CHANGES ALLOWED WITHOUT PRIOR APPROVAL
APPROVED PLANS MUST BE AT CONSTRUCTION SITE

CYNTHIA A. BAUMANN
No. 6677
REGISTERED PROFESSIONAL ENGINEER
5/10/19

CDM Smith
260 West Exchange Street, Suite 300
Providence, RI 02903
Tel: (401) 751-5360

REVISIONS			NO.	DATE	BY
NO.	DATE	BY			

RHODE ISLAND DEPARTMENT OF TRANSPORTATION
SAFE ROUTES TO SCHOOL CONTRACT 3
RHODE ISLAND

DETAILS SMITHFIELD

CHECKED BY LDS DATE 03-2018 SCALE NO SCALE