

FED. ROAD DIV. NO.	STATE	FEDERAL AID PROJECT NO.	FISCAL YEAR	SHEET NO.	TOTAL SHEETS
	RI		2017	1	9

INDEX

SHEET NO.	DESCRIPTION
1	COVER SHEET
2	STANDARD PLAN SYMBOLS & STANDARD LEGEND
3	STANDARD NOTES - 1
4	STANDARD NOTES - 2
5	JOB SPECIFIC PLAN SYMBOLS, LEGEND & NOTES
LOCATION NO. 6	
6	DOUGLAS PIKE (ROUTE 7) AT WHIPPLE ROAD - GENERAL PLAN NO. 6
7	DOUGLAS PIKE (ROUTE 7) AT WHIPPLE ROAD - LOCATION PLAN NO. 6
8	DOUGLAS PIKE (ROUTE 7) AT WHIPPLE ROAD - BASIN PLAN
9	DOUGLAS PIKE (ROUTE 7) AT WHIPPLE ROAD - DETAILS

STATE OF RHODE ISLAND

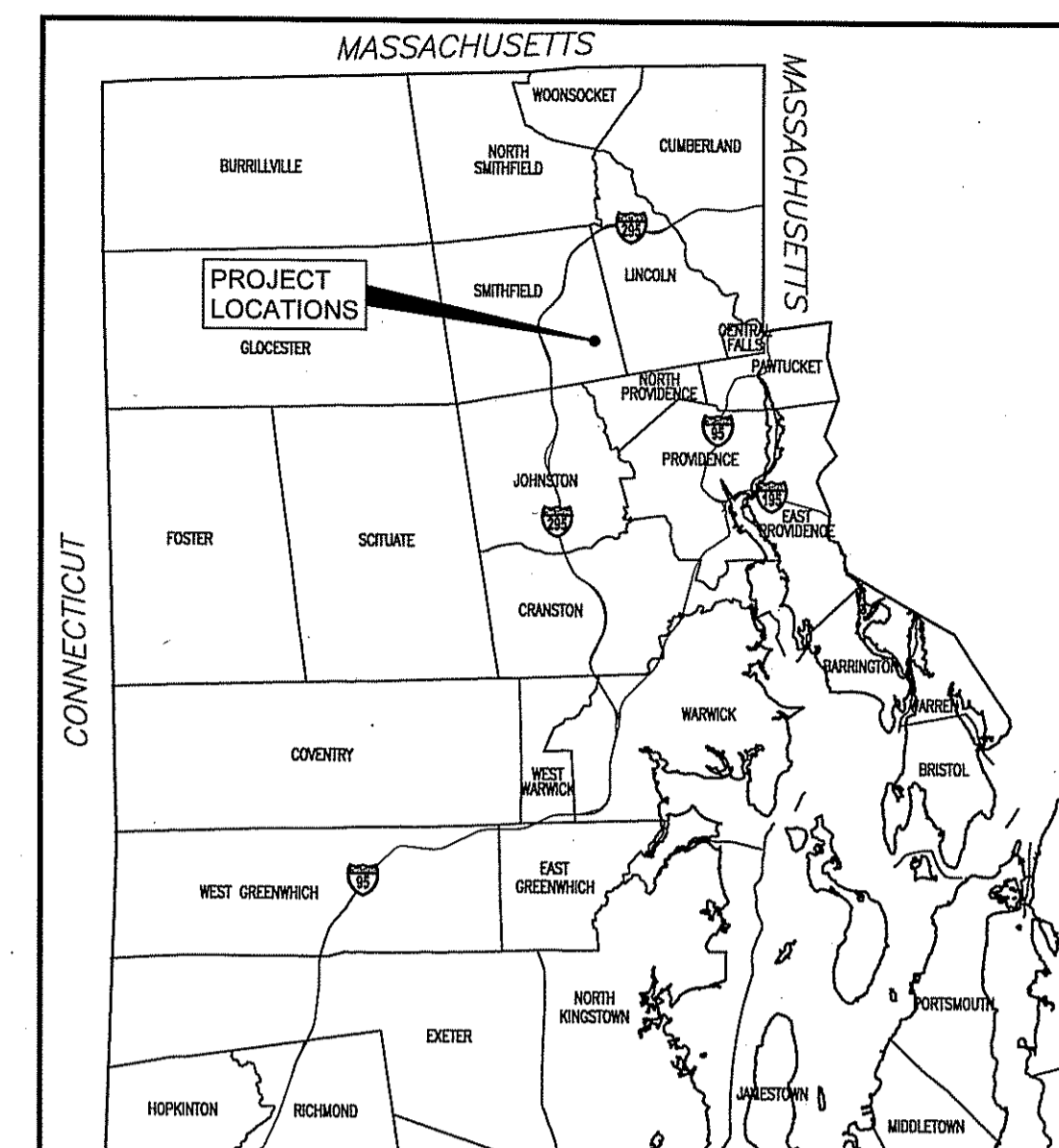


DEPARTMENT OF TRANSPORTATION

PLANS OF PROPOSED STATE TRAFFIC COMMISSION MISCELLANEOUS INTERSECTION IMPROVEMENTS FOR DOUGLAS PIKE AND WHIPPLE ROAD

TOWN SMITHFIELD
COUNTY OF PROVIDENCE

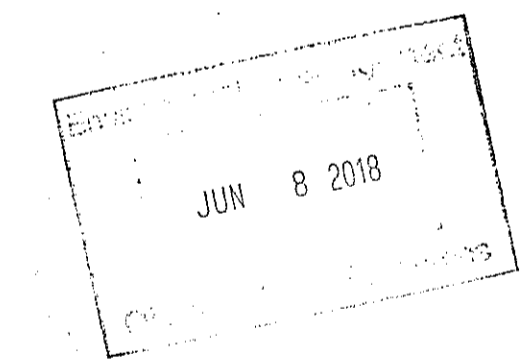
R.I. CONTRACT NO. XXXX-YY-ZZZ F.A. PROJECT NO. XXXX-YYYY(ZZZ)



LOCATION MAP
SCALE: 1"=6 MILES

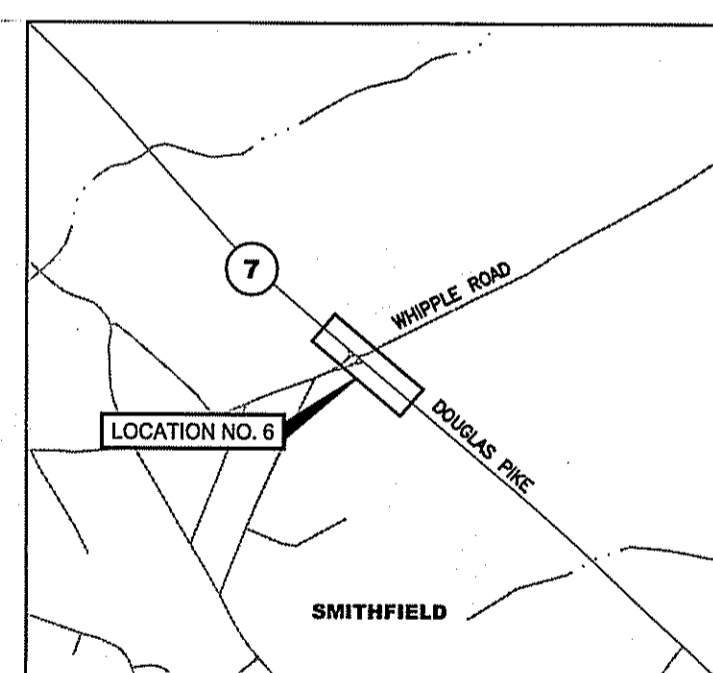
DEPARTMENT OF ENVIRONMENTAL MANAGEMENT
OFFICE OF WATER RESOURCES
FRESHWATER WETLANDS PROGRAM
APPROVED WITH CONDITIONS
AS SPECIFIED IN THE LETTER OF APPROVAL
DATED SEP 18 2018 FILE # 18-0138
NO CHANGES ALLOWED WITHOUT PRIOR APPROVAL
APPROVED PLANS MUST BE AT CONSTRUCTION SITE

Christopher D. Wenzel



Kindly be advised that this Permit is not equivalent to a verification of the type or extent of freshwater wetlands on site.

PERMIT SUBMISSION
JUNE 2018



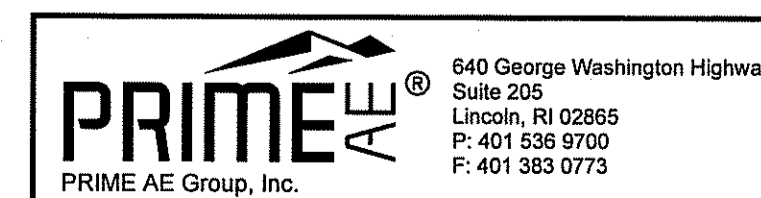
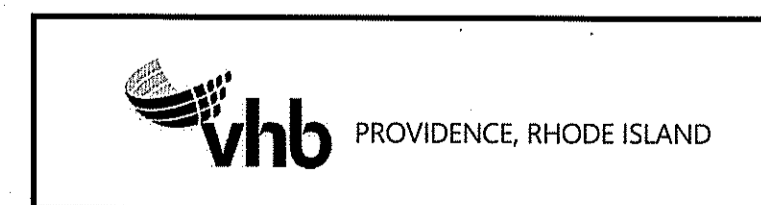
LAYOUT & KEY PLAN
SCALE: 1"=1200'

R.I. STANDARD SPECIFICATIONS AND STANDARD DETAILS

SPECIFICATIONS TO GOVERN THIS PROJECT ARE THE R.I. STANDARD SPECIFICATIONS FOR ROAD AND BRIDGE CONSTRUCTION, AMENDED AUGUST 2013, WITH ALL REVISIONS, AND THE STATE AND FEDERAL SPECIAL PROVISIONS INCLUDED IN THE CONTRACT DOCUMENTS. STANDARD DETAILS FOR THIS PROJECT ARE R.I. STANDARD DETAILS, 1998 EDITION, WITH ALL REVISIONS.

SCALES OF DRAWINGS
Plans 1 inch = 20 feet

BASE OF LEVELS
NAVD 88
NAD83 (2011) (EPOCH:2010.0000)

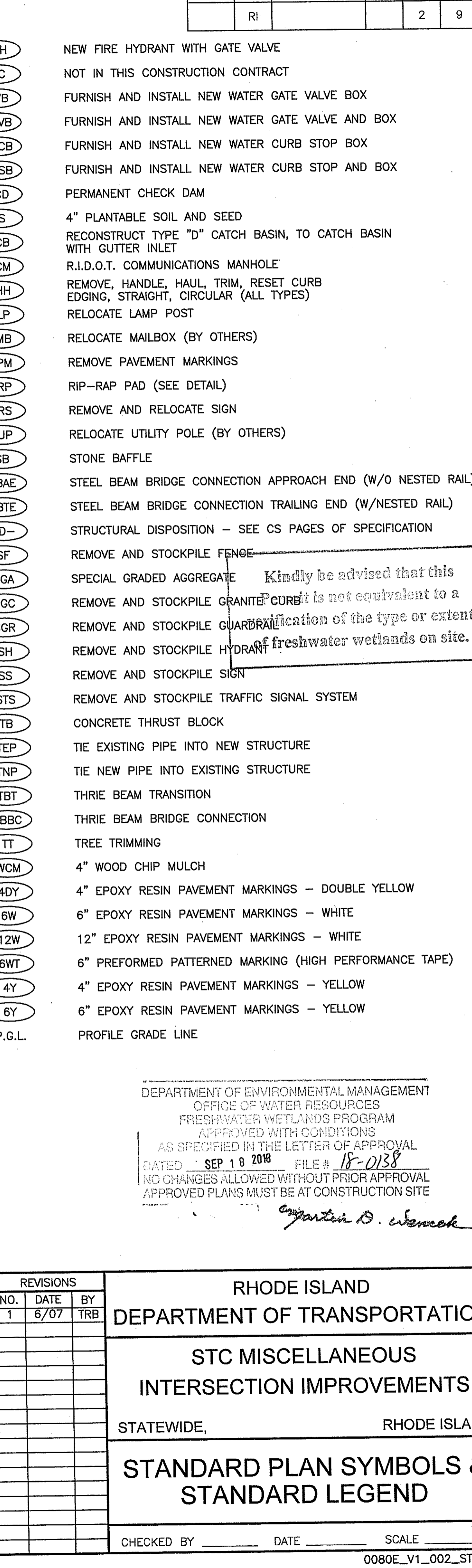
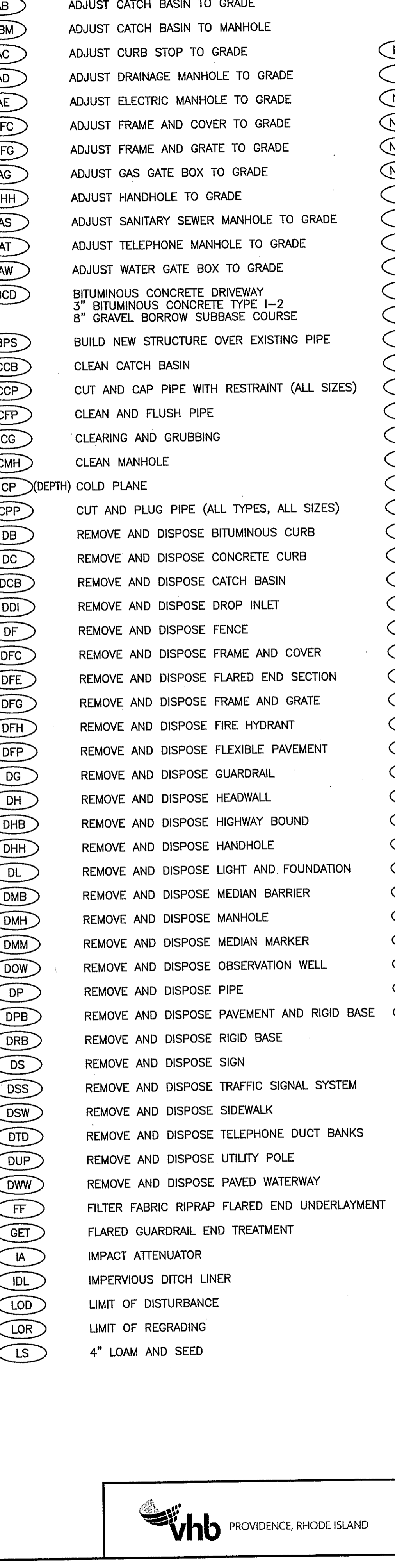
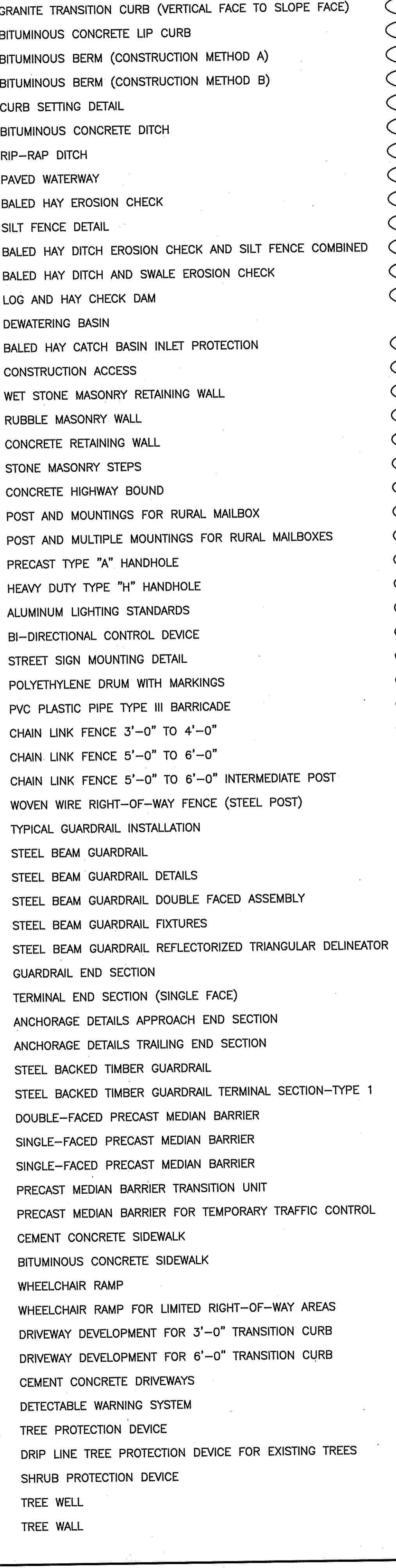
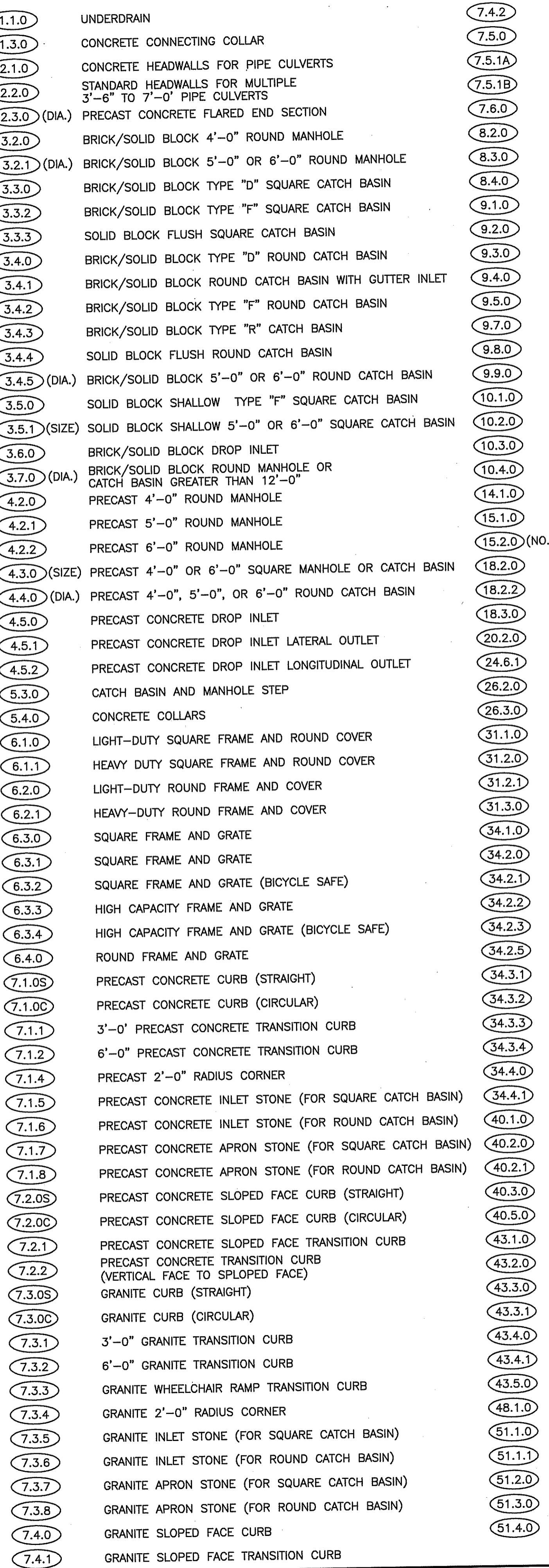
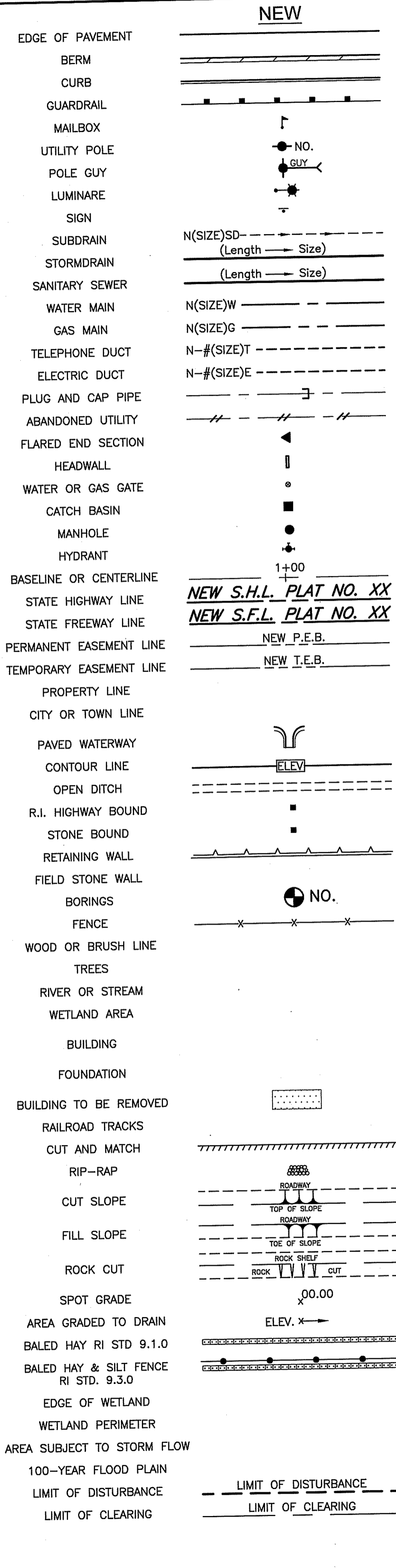
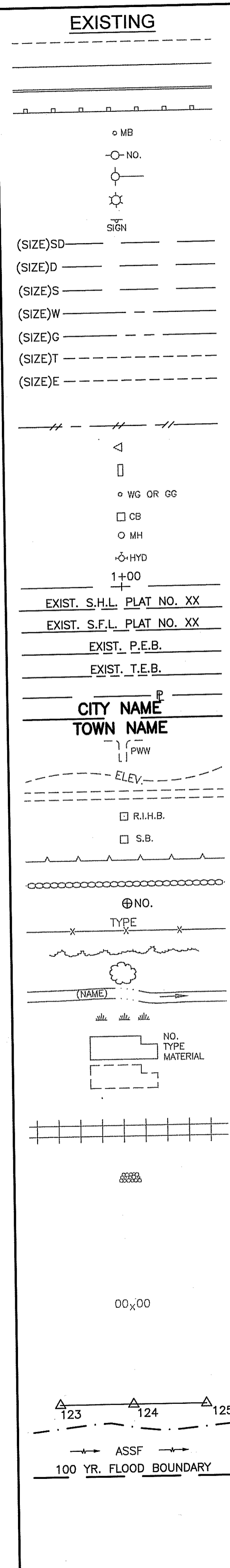


Contract Number XXXX-YY-ZZZ

Number of Sheet 1

Total Sheets 9

R.I. DEPARTMENT OF TRANSPORTATION	
APPROVED	
ADMINISTRATOR, PROJECT MANAGEMENT	DATE
APPROVED	
CHIEF ENGINEER OF INFRASTRUCTURE	DATE
APPROVED	
DIRECTOR	DATE
DEPARTMENT OF TRANSPORTATION FEDERAL HIGHWAY ADMINISTRATION	
APPROVED	
DIVISION ADMINISTRATOR	DATE



REVISIONS		
NO.	DATE	BY
1	6/07	TRB

DEPARTMENT OF ENVIRONMENTAL MANAGEMENT
OFFICE OF WATER RESOURCES
FRESHWATER WETLANDS PROGRAM
APPROVED WITH CONDITIONS
AS SPECIFIED IN THE LETTER OF APPROVAL
DATED SEP 18 2018 FILE # 18-0138
NO CHANGES ALLOWED WITHOUT PRIOR APPROVAL
APPROVED PLANS MUST BE AT CONSTRUCTION SITE

Carla D. Wenzel

RHODE ISLAND
DEPARTMENT OF TRANSPORTATION

STC MISCELLANEOUS
INTERSECTION IMPROVEMENTS

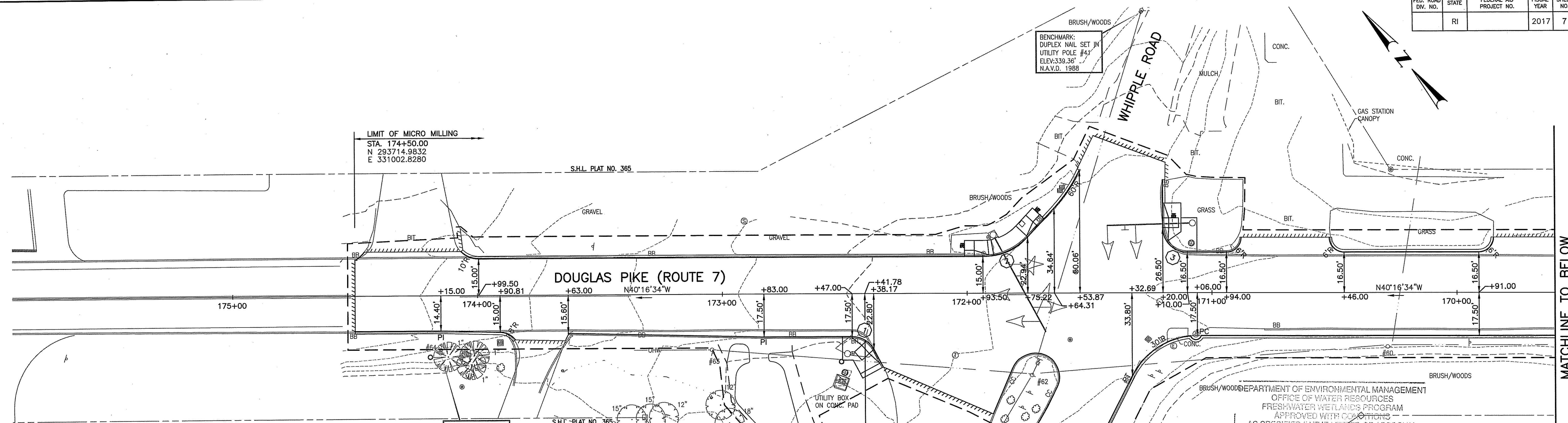
STATEWIDE, RHODE ISLAND

STANDARD PLAN SYMBOLS &
STANDARD LEGEND

CHECKED BY _____ DATE _____ SCALE _____

0080E_V1_002_STDS

Kindly be advised that this is not equivalent to a verification of the type or extent of freshwater wetlands on site.



CURB CURVE DATA					
CURVE NO.	①	CURVE NO.	②	CURVE NO.	③
RADIUS	10.00'	RADIUS	25.00'	RADIUS	10.00'
LENGTH	10.82'	LENGTH	20.50'	LENGTH	15.71'
TANGENT	6.01'	TANGENT	10.87'	TANGENT	10.00'
DELTA	62°00'00"	DELTA	46°58'57"	DELTA	90°00'00"
PC STA.	172+38.17, 22.80'LT.	PC STA.	171+75.22, 22.94'RT.	PC STA.	171+10.00, 16.50'RT.
PT STA.	172+47.00, 17.50'LT.	PT STA.	171+93.50, 15.00'RT.	PRC STA.	171+20.00, 26.50'RT.

BASELINE COORD. (DOUGLAS PIKE)			
	STATION	NORTHING	EASTING
PI	167+50.00	293262.4521	331536.8838
PI	174+50.00	293714.9832	331002.8280
BRG. N 40°16'34" W			

DEPARTMENT OF ENVIRONMENTAL MANAGEMENT
OFFICE OF WATER RESOURCES
FRESHWATER WETLANDS PROGRAM
APPROVED WITH CONDITIONS
AS SPECIFIED IN THE LETTER OF APPROVAL
DATED SEP 18 2018 FILE # 18-0138
NO CHANGES ALLOWED WITHOUT PRIOR APPROVAL
APPROVED PLANS MUST BE AT CONSTRUCTION SITE

Jonathan D. Wemch

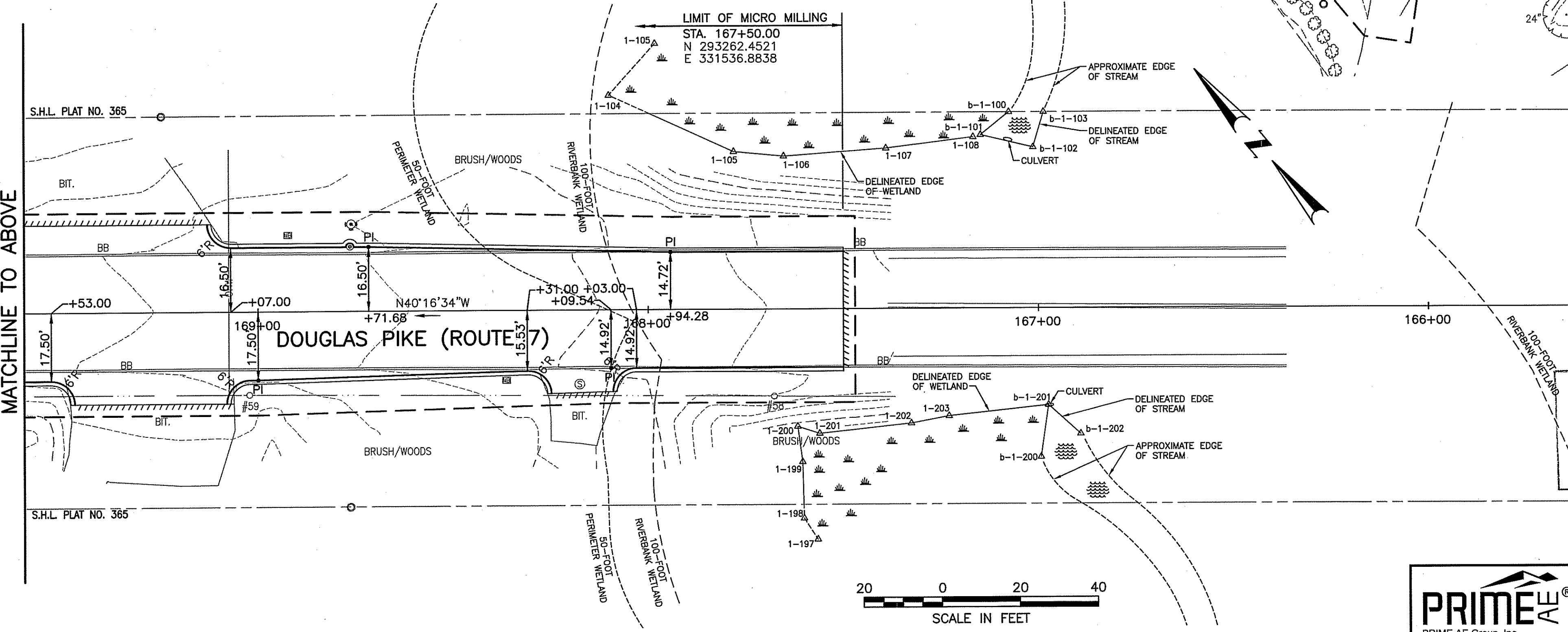
WHEELCHAIR RAMP CURB TABLE					
DOUGLAS PIKE (SB)					
STREET VIEW (LT. TO RT.)	CURB TYPE	LENGTH	RADIUS	GRADIENT SIDE	TRANS. LENGTH
TRANSITION	STRAIGHT	4.00'	—	HIGH	8.00'
TRANSITION	STRAIGHT	4.00'	—	—	—
RAMP STONE	CURVE	4.82'	10.00'	—	—
TRANSITION	CURVE	6.00'	10.00'	LOW	6.00'
CURB	STRAIGHT	4.00'	—	—	—

DOUGLAS PIKE (NB)					
WHEELCHAIR RAMP CURB (LT. TO RT.)	CURB TYPE	LENGTH	RADIUS	GRADIENT SIDE	TRANS. LENGTH
TRANSITION	—	—	—	NONE	—
RAMP STONE	STRAIGHT	4.00'	—	—	—
TRANSITION	STRAIGHT	3.50'	—	—	—
TRANSITION	CURVE	4.50'	25.00'	HIGH	8.00'

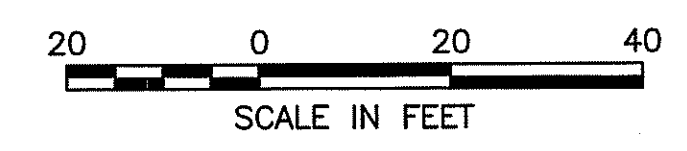
WHIPPLE STREET (WB)					
WHEELCHAIR RAMP CURB (LT. TO RT.)	CURB TYPE	LENGTH	RADIUS	GRADIENT SIDE	TRANS. LENGTH
TRANSITION	STRAIGHT	6.00'	—	—	6.00'
RAMP STONE	STRAIGHT	4.00'	—	—	—
TRANSITION	—	—	—	NONE	—

WHIPPLE STREET (EB)					
WHEELCHAIR RAMP CURB (LT. TO RT.)	CURB TYPE	LENGTH	RADIUS	GRADIENT SIDE	TRANS. LENGTH
TRANSITION	STRAIGHT	6.00'	—	—	6.00'
RAMP STONE	STRAIGHT	4.00'	—	—	—
TRANSITION	CURVE	6.00'	10.00'	—	6.00'
CURB	CURVE	9.71'	10.00'	—	—
CURB	STRAIGHT	4.00'	—	—	—

WHEELCHAIR RAMP STONE LOCATION					
DOUGLAS PIKE (SB)			DOUGLAS PIKE (NB)		
RADIUS	LENGTH	STA. CL. FACE	RADIUS	LENGTH	STA. CL. FACE
10.00'	4.82'	172+39.55, 20.83'LT.	—	4.00'	171+99.00, 15.00'RT.
WHIPPLE ROAD (WB)			WHIPPLE ROAD (EB)		
—	4.00'	171+69.76, 28.79'RT.	—	4.00'	171+20.00, 28.50'RT.



Kindly be advised that this Permit is not equivalent to a verification of the type or extent of freshwater wetlands on site.



PRIME AE
PRIME AE Group, Inc.
640 George Washington Highway
Suite 205
Lincoln, RI 02865
P: 401 536 9700
F: 401 363 0773

vhb PROVIDENCE, RHODE ISLAND

LOCATION NO. 6

REVISIONS		
NO.	DATE	BY

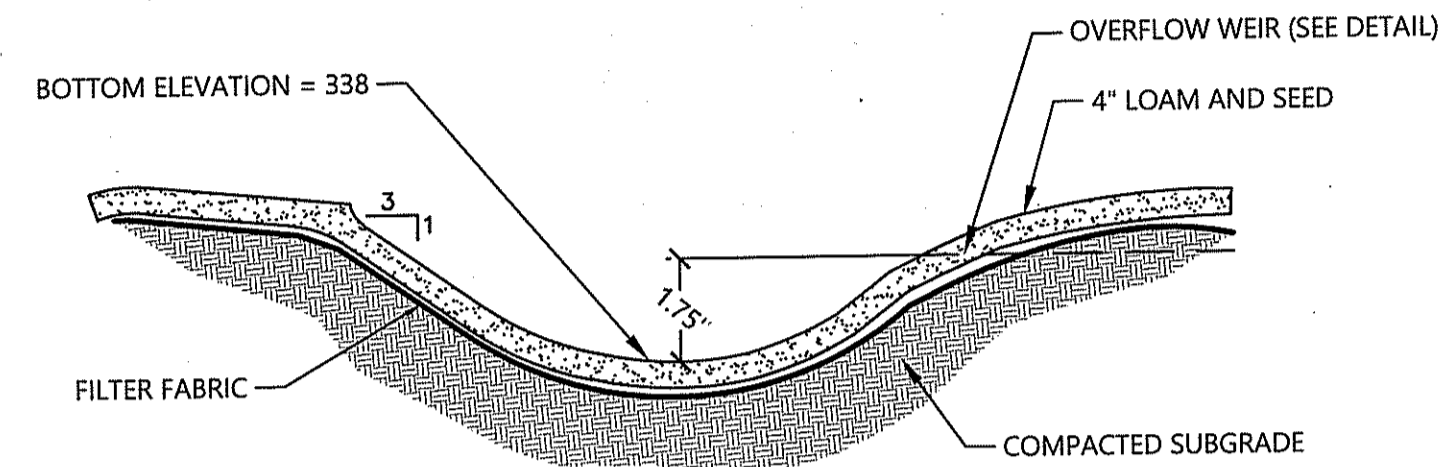
RHODE ISLAND
DEPARTMENT OF TRANSPORTATION

STC MISCELLANEOUS
INTERSECTION IMPROVEMENTS

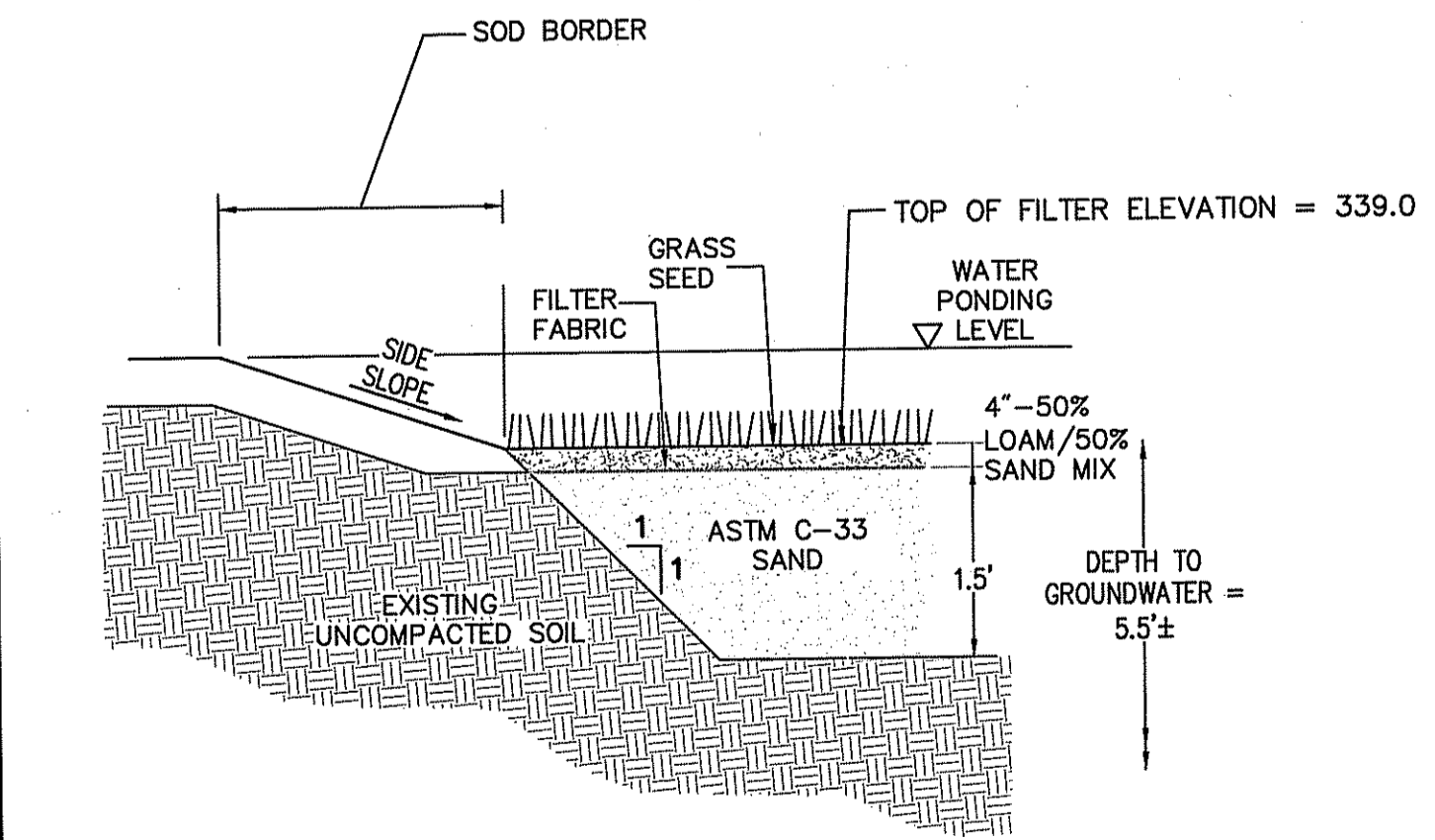
STATEWIDE, RHODE ISLAND

LOCATION PLAN NO. 6
DOUGLAS PIKE (ROUTE 7) AT WHIPPLE ROAD
SMITHFIELD

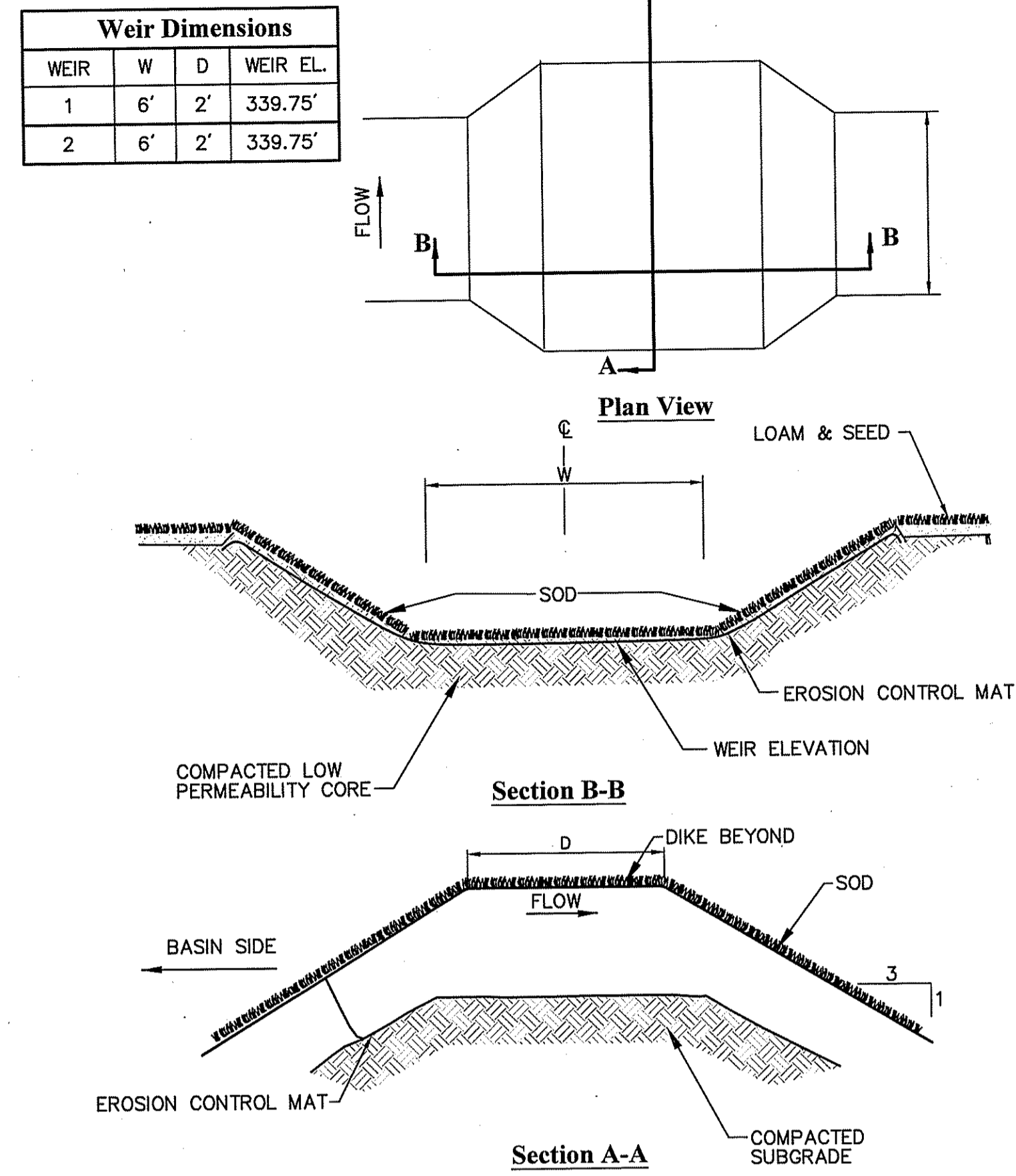
CHECKED BY PAE DATE 05/30/18 SCALE AS SHOWN



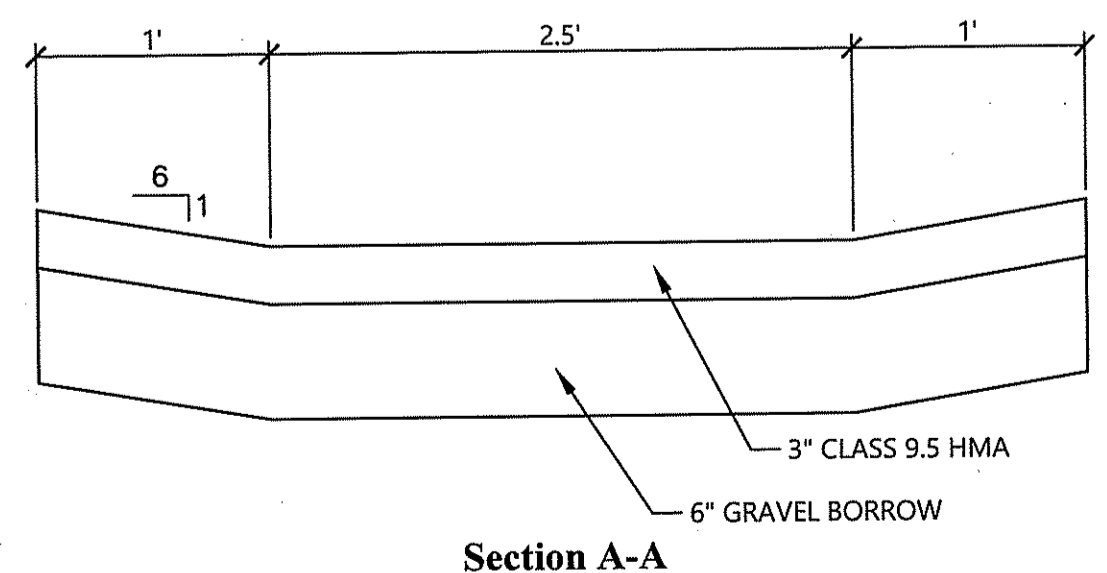
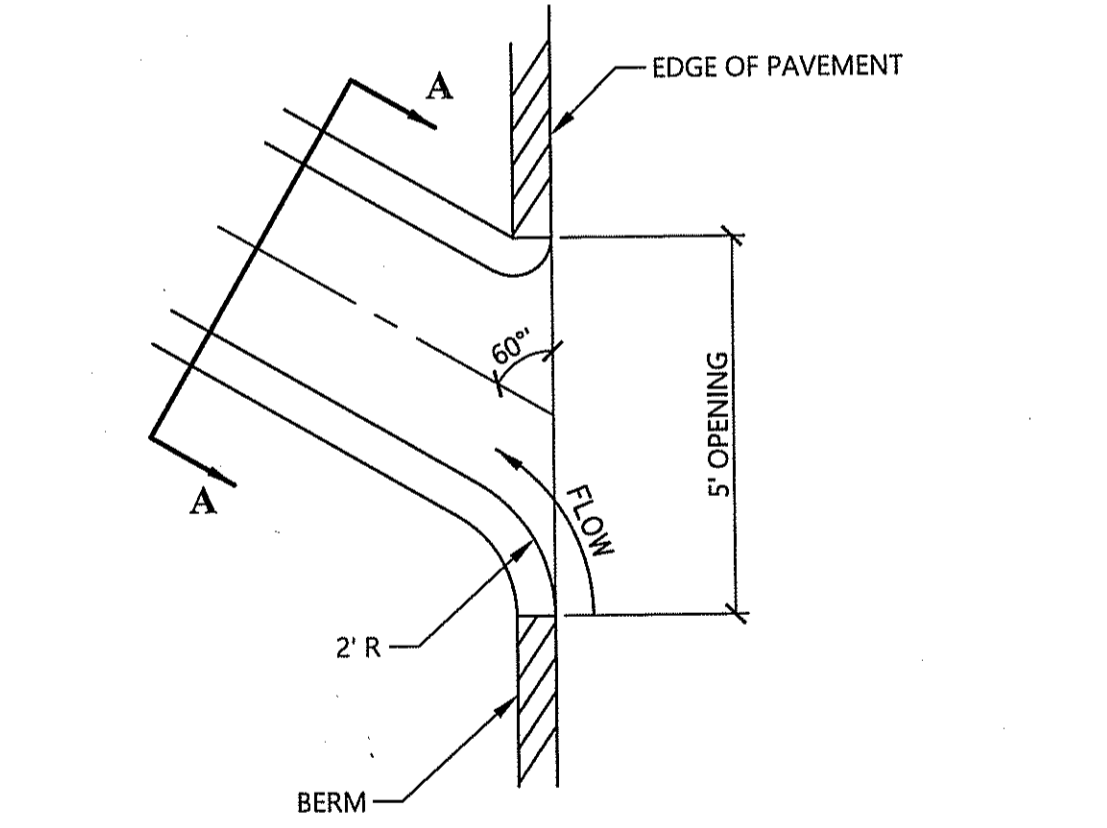
Sediment Forebay 6/08
 N.T.S. Source: VHB LD_352



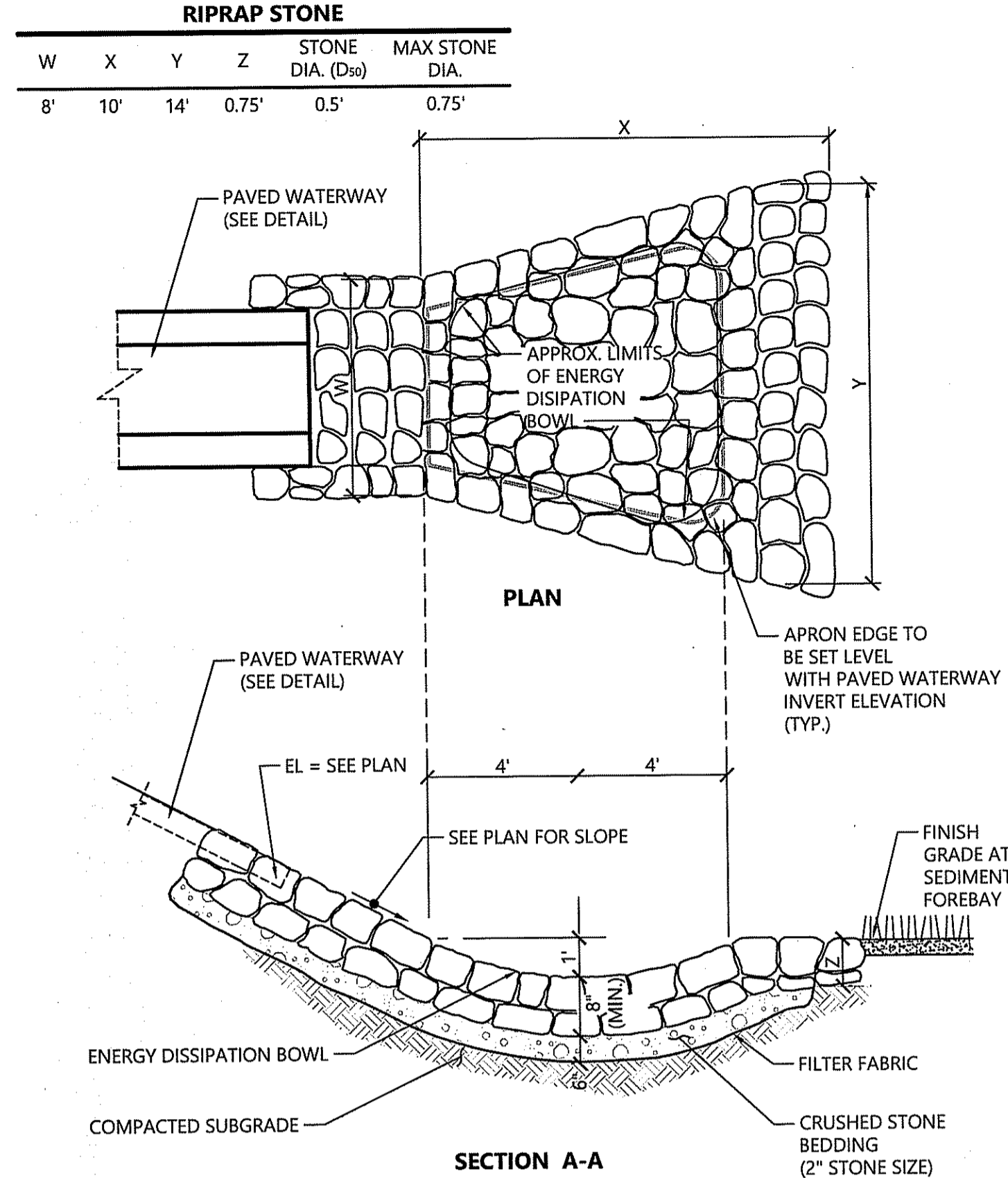
Sand Filter 6/08
 N.T.S. Source: VHB LD_352



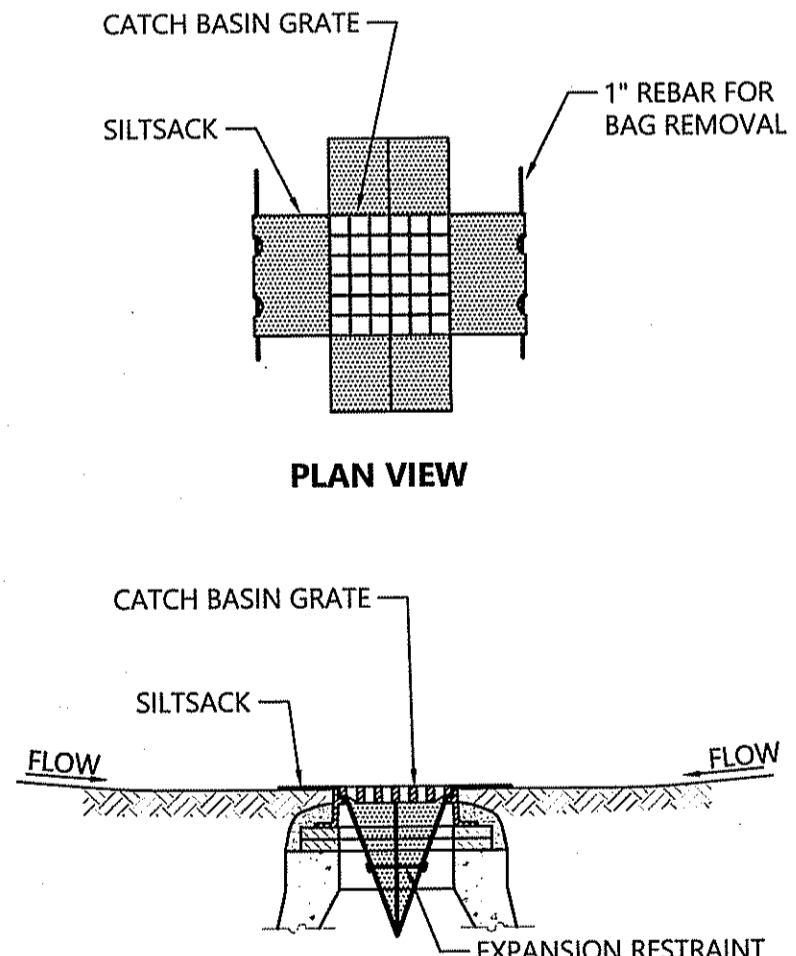
Overflow Weir 6/08
 N.T.S. Source: VHB LD_161



Paved Waterway 04/18
 N.T.S. Source: VHB

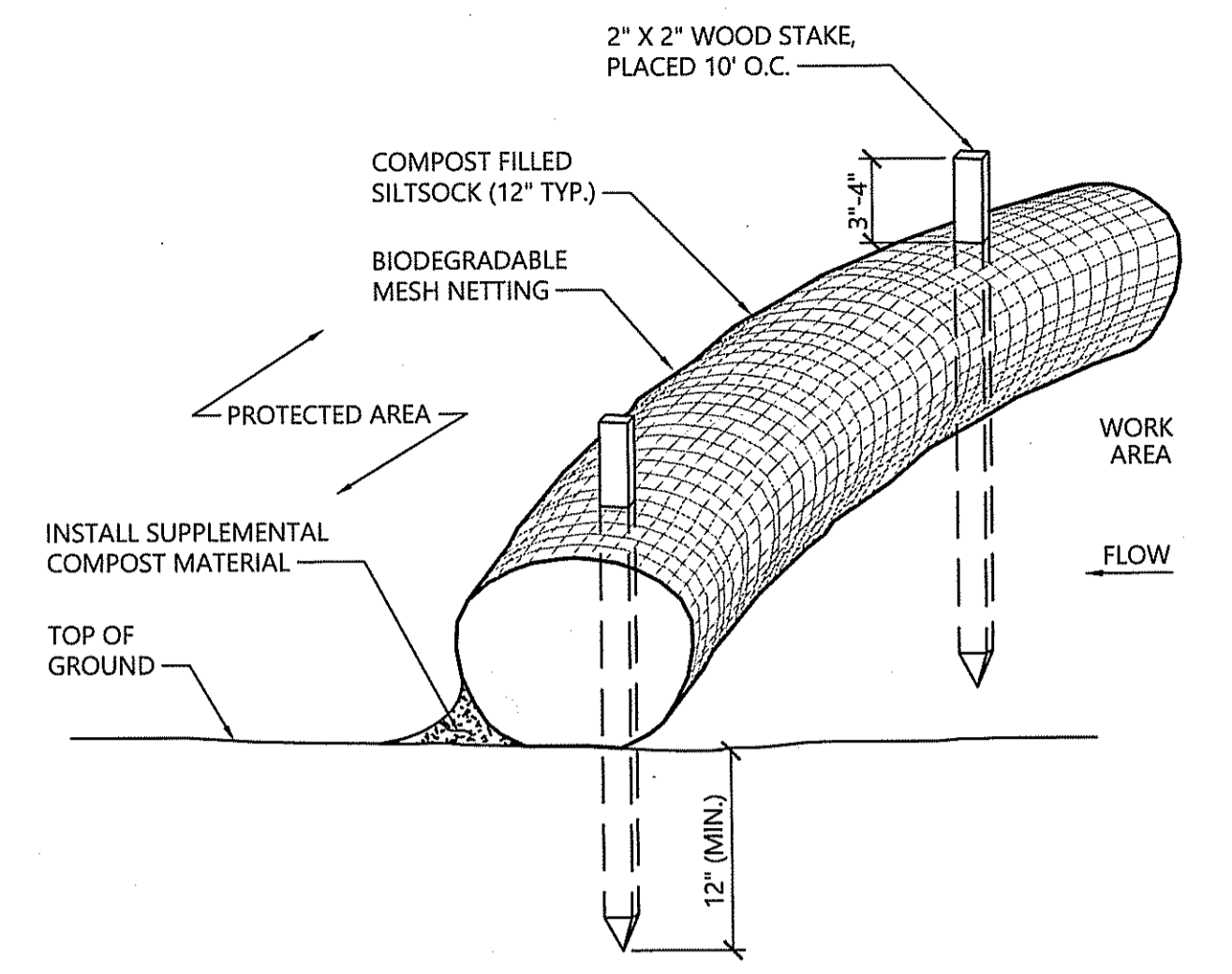


Stone Protection at Paved Waterway 1/16
 N.T.S. Source: VHB LD_674



- NOTES**
- INSTALL SILTSACK IN ALL CATCH BASINS WHERE INDICATED ON THE PLAN BEFORE COMMENCING WORK OR IN PAVED AREAS AFTER BINDER COURSE IS PLACED AND HAY BALES HAVE BEEN REMOVED.
 - GRATE TO BE PLACED OVER SILTSACK.
 - SILTSACK SHALL BE INSPECTED PERIODICALLY AND AFTER ALL STORM EVENTS AND CLEANING OR REPLACEMENT SHALL BE PERFORMED PROMPTLY AS NEEDED. MAINTAIN UNTIL UPSTREAM AREAS HAVE BEEN PERMANENTLY STABILIZED.

Silt sack Sediment Trap 1/16
 N.T.S. Source: VHB LD_674



- NOTES**
- SILTSOCK SHALL BE FILTREXX SILTSOCKX, OR APPROVED EQUAL.
 - SILTSOCKS SHALL OVERLAP A MINIMUM OF 12 INCHES.
 - SILTSOCK SHALL BE INSPECTED PERIODICALLY AND AFTER ALL STORM EVENTS, AND REPAIR OR REPLACEMENT SHALL BE PERFORMED PROMPTLY AS NEEDED.
 - COMPOST MATERIAL SHALL BE DISPERSED ON SITE, AS DETERMINED BY THE ENGINEER.
 - IF NON BIODEGRADABLE NETTING IS USED THE NETTING SHALL BE COLLECTED AND DISPOSED OF OFFSITE.

Siltsock - Erosion Control Barrier 1/16
 N.T.S. Source: VHB LD_658

Kindly be advised that this Permit is not equivalent to a verification of the type or extent of freshwater wetlands on site.

DEPARTMENT OF ENVIRONMENTAL MANAGEMENT
 OFFICE OF WATER RESOURCES
 FRESHWATER WETLANDS PROGRAM
 APPROVED WITH CONDITIONS
 AS SPECIFIED IN THE LETTER OF APPROVAL
 DATED SEP 19 2018 FILE # 18-0158
 NO CHANGES ALLOWED WITHOUT PRIOR APPROVAL
 APPROVED PLANS MUST BE AT CONSTRUCTION SITE

Jonathan D. Wemmer

REVISIONS			RHODE ISLAND DEPARTMENT OF TRANSPORTATION	
NO.	DATE	BY		
			STC MISCELLANEOUS INTERSECTION IMPROVEMENTS	
			STATEWIDE,	RHODE ISLAND
			DETAILS	
			DOUGLAS PIKE (ROUTE 7) AT WHIPPLE ROAD SMITHFIELD	
			CHECKED BY _____	DATE _____ SCALE _____

