

Plan Set

RIDEM Request for
Preliminary Determination Application
Date Issued: 7/13/2018

Environmental Management
JUL 16 2018
Office of Water Resources

H17 Circuit Protection System Upgrades Farnum Substation No. 105

76 Greenville Road, North Smithfield, Rhode Island

Sheet Index

Number	Drawing Title	Latest Issue
1	Notes	07/13/2018
2	Soil Erosion and Sediment Control Plan	07/13/2018
3	Details	07/13/2018



Site Location Map

nationalgrid

vhb

Environmental Management
JUL 16 2018
Office of Water Resources

DEPARTMENT OF ENVIRONMENTAL MANAGEMENT
OFFICE OF WATER RESOURCES
FRESHWATER WETLANDS PROGRAM
APPROVED WITH CONDITIONS
AS SPECIFIED IN THE LETTER OF APPROVAL
DATED AUG 30 2018 FILE # 18-0183
NO CHANGES ALLOWED WITHOUT PRIOR APPROVAL
APPROVED PLANS MUST BE AT CONSTRUCTION SITE

Christopher D. Ciancetta

EXISTING CONDITIONS INFORMATION:
REFERENCES:

1. WETLAND DELINEATION WAS PERFORMED BY VHB, PROVIDENCE OFFICE. STRUCTURE AND FLAG LOCATIONS WERE LOCATED BY A GLOBAL POSITIONING SYSTEM (GPS) FIELD SURVEY CONDUCTED BY VHB. THIS SURVEY CONFORMS TO A CLASS IV STANDARD AS DEFINED IN THE PROCEDURAL AND TECHNICAL STANDARDS FOR PERFORMING LAND SURVEYING IN THE STATE OF RHODE ISLAND AND PROVIDENCE PLANTATIONS.
2. PROPERTY LINE BASED ON NORTH SMITHFIELD PARCEL BOUNDARIES PROVIDED BY RIGIS. PROPERTY LINES ARE APPROXIMATE AND INTENDED TO BE A GRAPHICAL REPRESENTATION. THIS SHALL NOT BE CONSTRUED TO REPRESENT AN ACTUAL BOUNDARY SURVEY AND IS SUBJECT TO SUCH CHANGES AS AN ACCURATE BOUNDARY SURVEY MAY DISCLOSE.
3. NEAREST STREET INTERSECTION IS WITH VILLAGE WAY 450 FEET NORTHWEST OF THE SITE.

EROSION AND SEDIMENT CONTROL NOTES:

1. PRIOR TO STARTING ANY SITE WORK, THE CONTRACTOR SHALL NOTIFY APPROPRIATE AGENCIES AND SHALL INSTALL EROSION CONTROL MEASURES AS SHOWN ON THE PLANS AND AS IDENTIFIED IN FEDERAL, STATE AND LOCAL APPROVAL DOCUMENTS PERTAINING TO THIS PROJECT.
2. A SOIL EROSION AND SEDIMENTATION CONTROL PLAN HAS BEEN DESIGNED TO PROTECT ON-SITE WETLANDS AND WATERCOURSES AND OFF-SITE AREAS DURING AND AFTER CONSTRUCTION.
3. IN AREAS WHERE HIGH RUNOFF VELOCITIES OR HIGH SEDIMENT LOADS ARE EXPECTED, TWO LINES OF COMPOST FILTER SOCKS WILL BE INSTALLED BACK TO BACK.
4. ONCE WORK IS COMPLETE, FINAL SURFACE TREATMENT CONSISTING OF STRAW OR CELLULOSE MULCH WILL BE APPLIED TO STABILIZE THE DISTURBED AREAS ANY SOIL DISTURBANCE ASSOCIATED WITH EQUIPMENT ACCESS TO STRUCTURES OR STRUCTURE EXCAVATIONS SHOULD BE MULCHED WITH STRAW ON ALL DISTURBED AREAS AS SOON AS POSSIBLE BUT NOT MORE THAN 14 DAYS AFTER THE CONSTRUCTION ACTIVITY IN THAT AREA HAS TEMPORARILY OR PERMANENTLY CEASED.
5. IN ACCORDANCE WITH THE RIPDES GENERAL PERMIT, ALL STORMWATER CONTROL MEASURES, DISTURBED AREAS, AREAS USED FOR THE STORAGE OF MATERIALS THAT ARE EXPOSED TO PRECIPITATION (INCLUDING UNSTABILIZED SOIL STOCKPILES), DISCHARGE LOCATIONS AND LOCATIONS WHERE VEHICLES ENTER OR EXIT THE SITE, AS OUTLINED IN PART IV OF THIS PERMIT, MUST BE INSPECTED BY OR UNDER THE SUPERVISION OF THE APPLICANT AT LEAST ONCE EVERY SEVEN (7) CALENDAR DAYS AND WITHIN TWENTY-FOUR (24) HOURS AFTER ANY STORM EVENT WHICH GENERATES AT LEAST 0.25 INCHES OF RAINFALL PER TWENTY-FOUR (24) HOUR PERIOD AND/OR AFTER A SIGNIFICANT AMOUNT OF RUNOFF. SUCH AREAS SHALL BE INSPECTED FOR EVIDENCE OF, OR THE POTENTIAL FOR, POLLUTANTS ENTERING THE WATERS OF THE STATE OR A SEPARATE STORM SEWER SYSTEM. ALL BMPs SHALL BE MAINTAINED TO PREVENT UNCONTROLLED RELEASES OF MEASURABLE AMOUNTS OF SEDIMENT OR SEDIMENT LADEN WATER FROM TRAVELING BEYOND THE LIMITS OF DISTURBANCE.
6. SEDIMENT SHALL BE REMOVED FROM BEHIND BARRIERS IF GREATER THAN 6 INCHES DEEP OR AS NEEDED.
7. DAMAGED OR DETERIORATED EROSION/SEDIMENTATION CONTROL ITEMS WILL BE REPAIRED IMMEDIATELY AFTER IDENTIFICATION.
8. EROSION CONTROL MEASURES SHALL REMAIN IN PLACE UNTIL ALL DISTURBED EARTH HAS BEEN SECURELY STABILIZED. ONCE THE SITE IS STABILIZED, THE EROSION CONTROLS SHALL BE REMOVED AND PROPERLY DISPOSED OF BY THE CONTRACTOR.
9. IN THE EVENT OF A FUEL SPILL OR EQUIPMENT MALFUNCTION RESULTING IN A RELEASE OF HAZARDOUS MATERIAL, ALL WORK WILL BE STOPPED IN THIS AREA UNTIL THE RELEASE/SPILL IS CLEANED UP.
10. EQUIPMENT USED FOR CONSTRUCTION WILL BE PROPERLY MAINTAINED AND OPERATED TO REDUCE THE CHANCES OF SPILL OCCURRENCES OF PETROLEUM PRODUCTS. REFUELING OF EQUIPMENT WILL BE REQUIRED TO CARRY SPILL CONTAINMENT AND PREVENTION DEVICES (I.E., ABSORBENT PADS, CLEAN UP RAGS, FIVE GALLON CONTAINERS, ABSORBENT MATERIAL, ETC.) AT ALL TIMES. IN ADDITION, MAINTENANCE EQUIPMENT AND REPLACEMENT PARTS FOR CONSTRUCTION EQUIPMENT WILL BE ON HAND TO REPAIR FAILURES AND STOP A SPILL IN THE EVENT OF EQUIPMENT MALFUNCTION.
11. ANY HAZARDOUS WASTE SPILLS SHALL BE CLEANED UP IMMEDIATELY, AND IF THE SPILL AMOUNT IS EQUAL TO OR EXCEEDS THE EPA REPORTABLE QUANTITY (RQ) FOR THAT SUBSTANCE IN ACCORDANCE WITH 40 CFR PARTS 1010, 117, OR 302, THE CONTRACTOR SHALL IMMEDIATELY CONTACT THE NATIONAL RESPONSE CENTER AT 1-800-424-8802. THE CONTRACTOR WILL ALSO BE RESPONSIBLE FOR SUBMITTING IN WRITING A DESCRIPTION OF THE RELEASE TO THE EPA REGIONAL OFFICE AND RIDEM PROVIDING THE DATE AND CIRCUMSTANCES OF THE RELEASE AND THE STEPS TO BE TAKEN TO PREVENT ANOTHER RELEASE. DIRECTIONS FOR CLEANING UP SPILLS SHALL BE CLEARLY POSTED AT A DESIGNATED ON-SITE LOCATION, AND CONSTRUCTION PERSONNEL SHALL BE MADE AWARE OF THE PROCEDURES AND LOCATION OF CLEANUP SUPPLIES. PERSONNEL SHALL WEAR APPROPRIATE PROTECTIVE GEAR AND HAVE PROPER TRAINING TO PREVENT INJURY FROM CONTACT WITH ANY HAZARDOUS SUBSTANCES.
12. NO GRADE CHANGES ARE PROPOSED.

DEPARTMENT OF ENVIRONMENTAL MANAGEMENT
 OFFICE OF WATER RESOURCES
 FRESHWATER WETLANDS PROGRAM
 APPROVED WITH CONDITIONS
 AS SPECIFIED IN THE LETTER OF APPROVAL
 DATED AUG 30 2018 FILE # 18-0183
 NO CHANGES ALLOWED WITHOUT PRIOR APPROVAL
 APPROVED PLANS MUST BE AT CONSTRUCTION SITE

Christopher D. Wenczek

Environmental Management
 JUL 16 2018
 Office of Water Resources

H17 CIRCUIT PROTECTION SYSTEM UPGRADES
FARNUM SUBSTATION NO. 105
 Notes

North Smithfield, Rhode Island

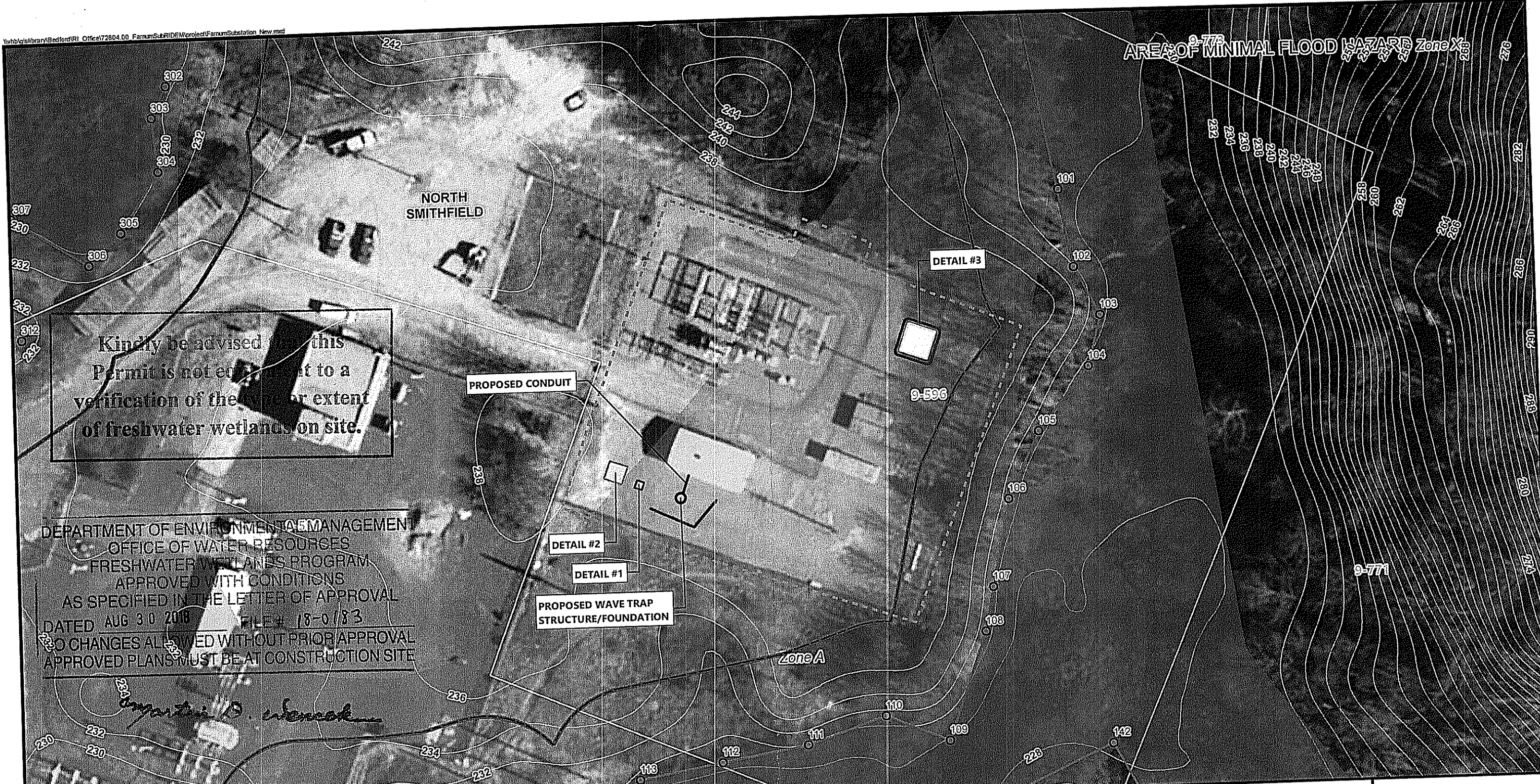
Page 1 of 4

Source: RIGIS, National Grid, VHB

Date: 7/13/2018

nationalgrid





Kindly be advised that this Permit is not equivalent to a verification of the type or extent of freshwater wetlands on site.

DEPARTMENT OF ENVIRONMENTAL MANAGEMENT
 OFFICE OF WATER RESOURCES
 FRESHWATER WETLANDS PROGRAM
 APPROVED WITH CONDITIONS
 AS SPECIFIED IN THE LETTER OF APPROVAL
 DATED AUG 30 2018 FILE # 18-0183
 NO CHANGES ALLOWED WITHOUT PRIOR APPROVAL
 APPROVED PLANS MUST BE AT CONSTRUCTION SITE



Legend

Temporary Concrete Washout	Wetland Flag	2-ft Contour
Temporary Soil Stockpile Location	50-ft Perimeter Wetland	Parcel Boundary
Temporary Dewatering Basin/Filter Bag	Delineated Wetland Edge	
Erosion Control	Swamp	
Limit of Disturbance	FEMA 100-Year Floodplain	

No Natural Heritage Areas within Map Extent

1 Inch = 50 Feet

0 25 50 100 Feet

H17 CIRCUIT PROTECTION SYSTEM UPGRADES
FARNUM SUBSTATION NO. 105
 Soil Erosion and Sediment Control Plan

North Smithfield, Rhode Island

Page 2 of 4

Source: RIGIS, National Grid, VHB

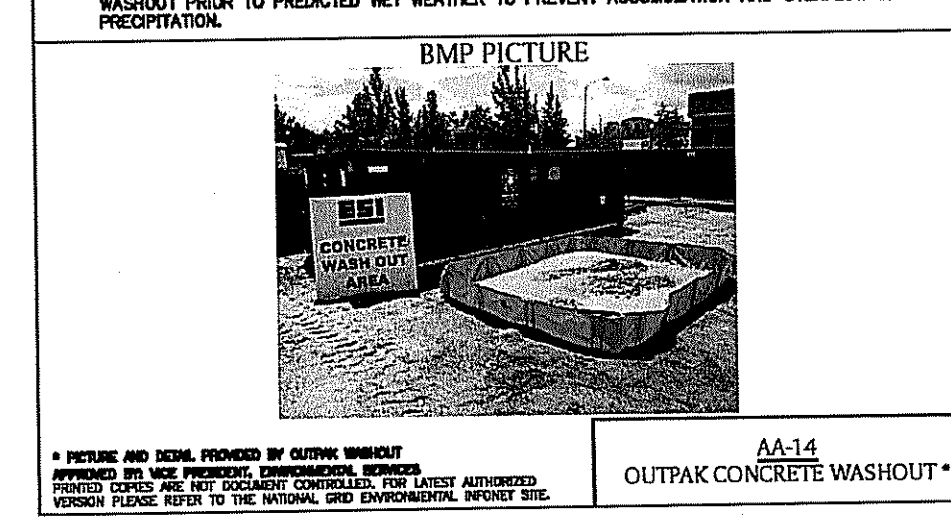
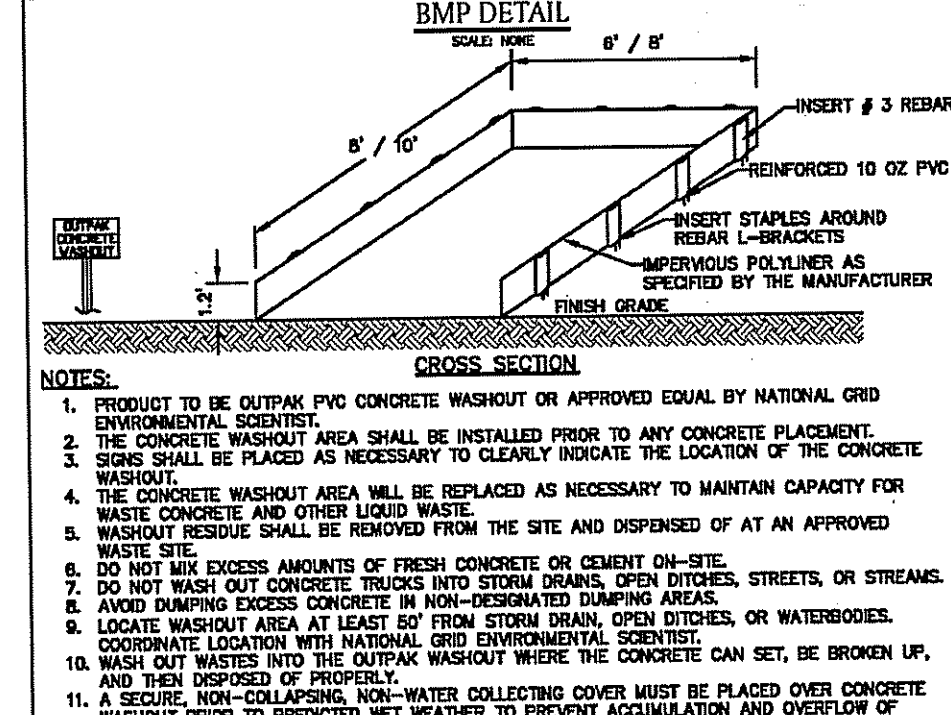
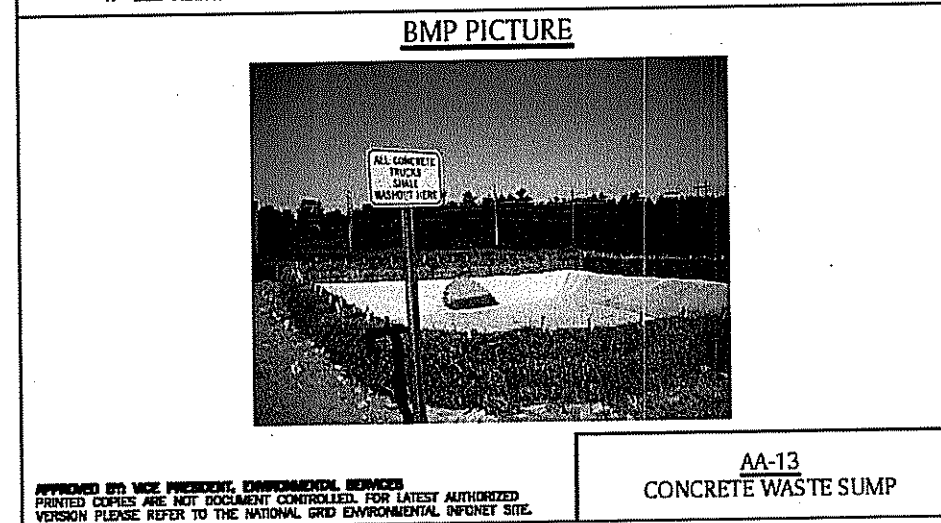
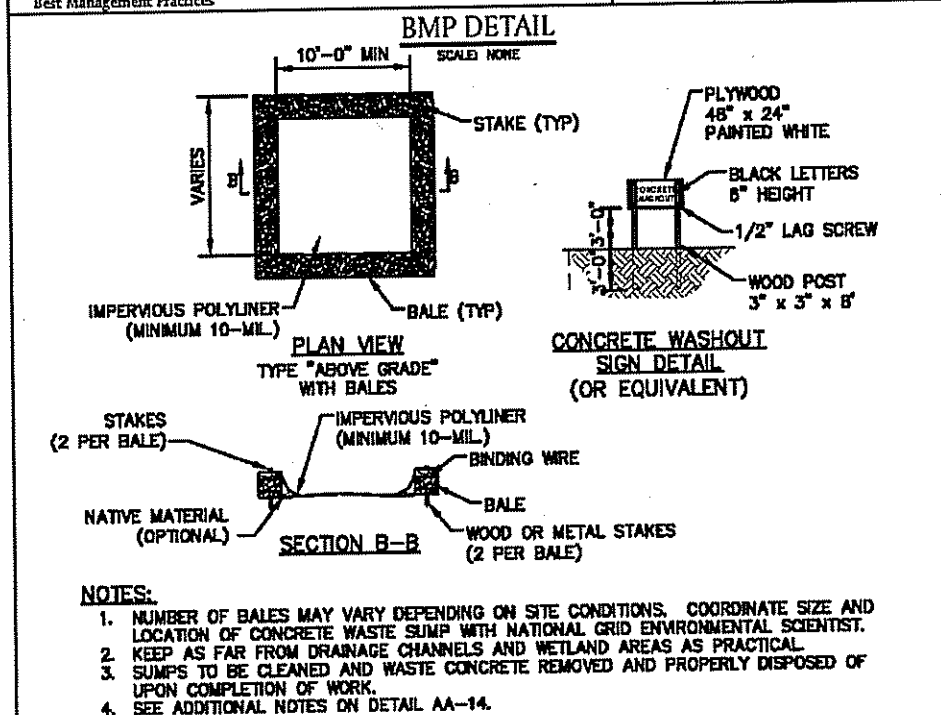
nationalgrid

JUL 6 2018

Office of Water Resources

Date: 7/13/2018

vhb



DEPARTMENT OF ENVIRONMENTAL MANAGEMENT
 OFFICE OF WATER RESOURCES
 FRESHWATER WETLANDS PROGRAM
 APPROVED WITH CONDITIONS
 AS SPECIFIED IN THE LETTER OF APPROVAL
 DATED AUG. 3.0. 2018 FILE # 18-0183
 NO CHANGES ALLOWED WITHOUT PRIOR APPROVAL
 APPROVED PLANS MUST BE AT CONSTRUCTION SITE

Angela D. Clement

Detail #1

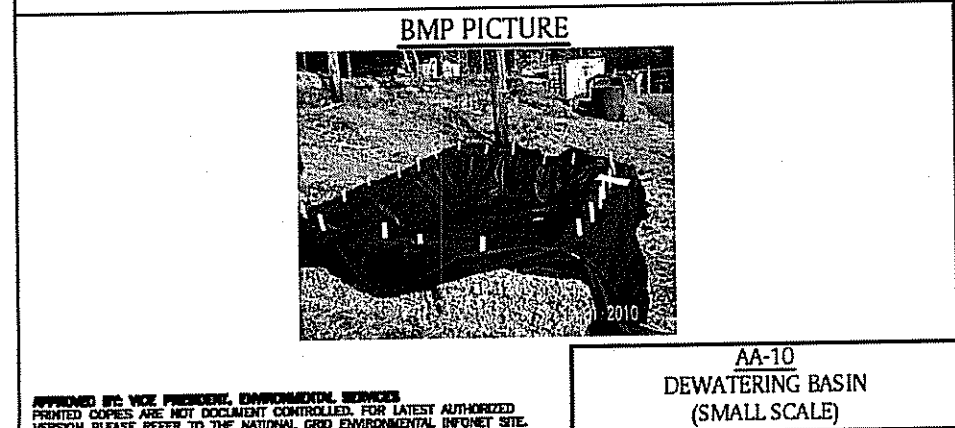
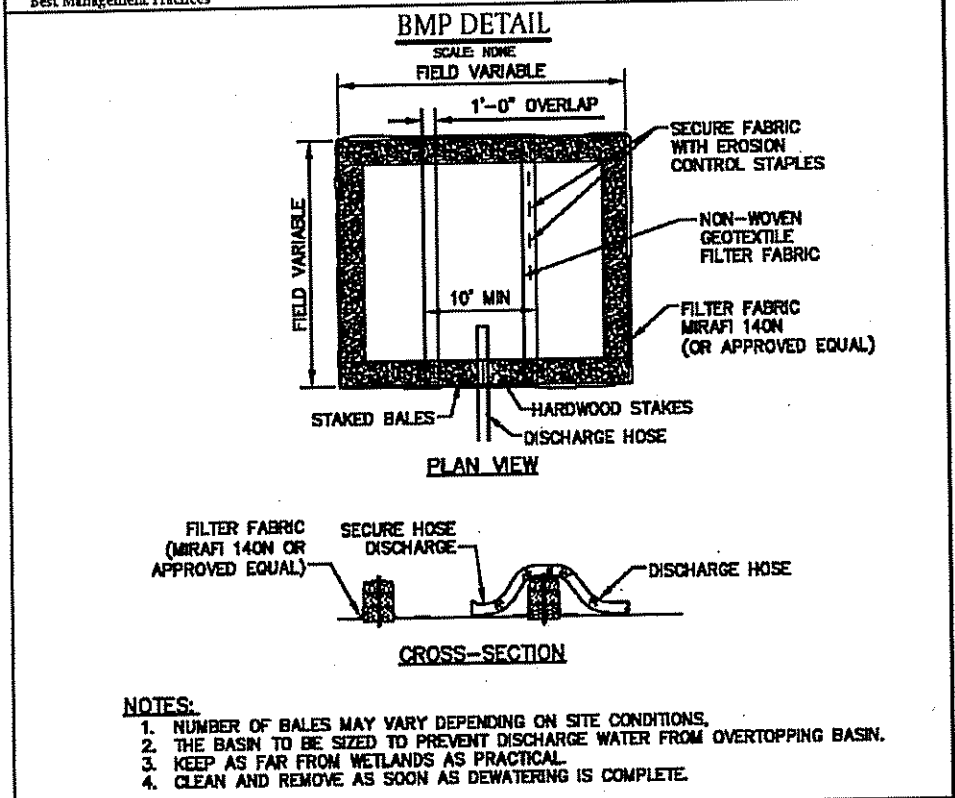
Environmental Management
 JUL 16 2018
 Office of Water Resources

**H17 CIRCUIT PROTECTION SYSTEM UPGRADES
 FARNUM SUBSTATION NO. 105**

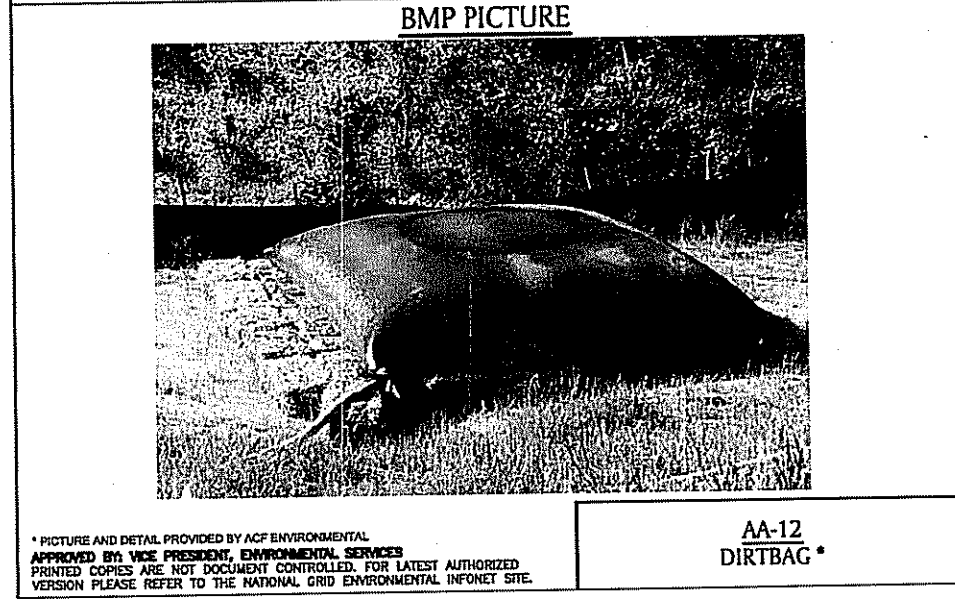
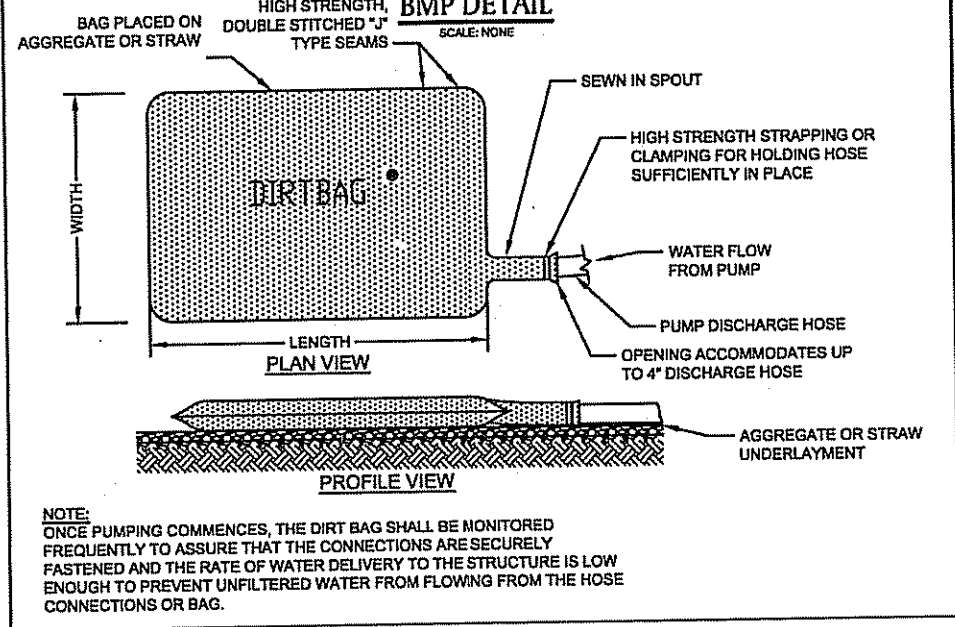
Details
 North Smithfield, Rhode Island



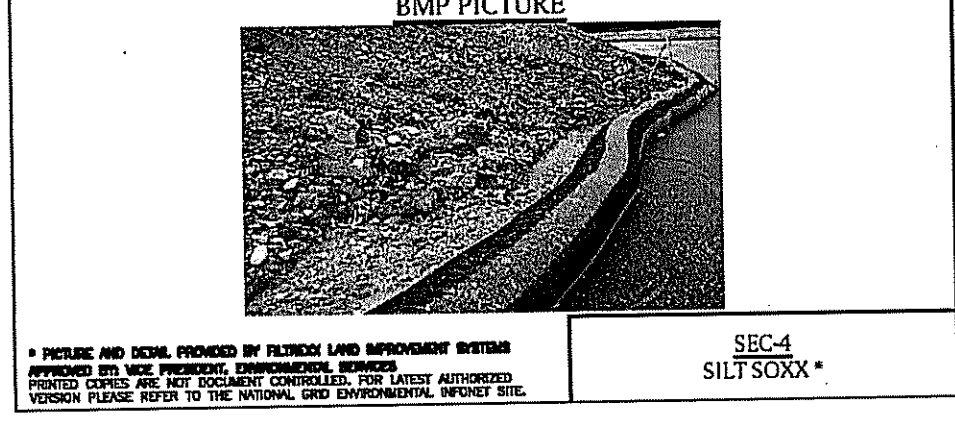
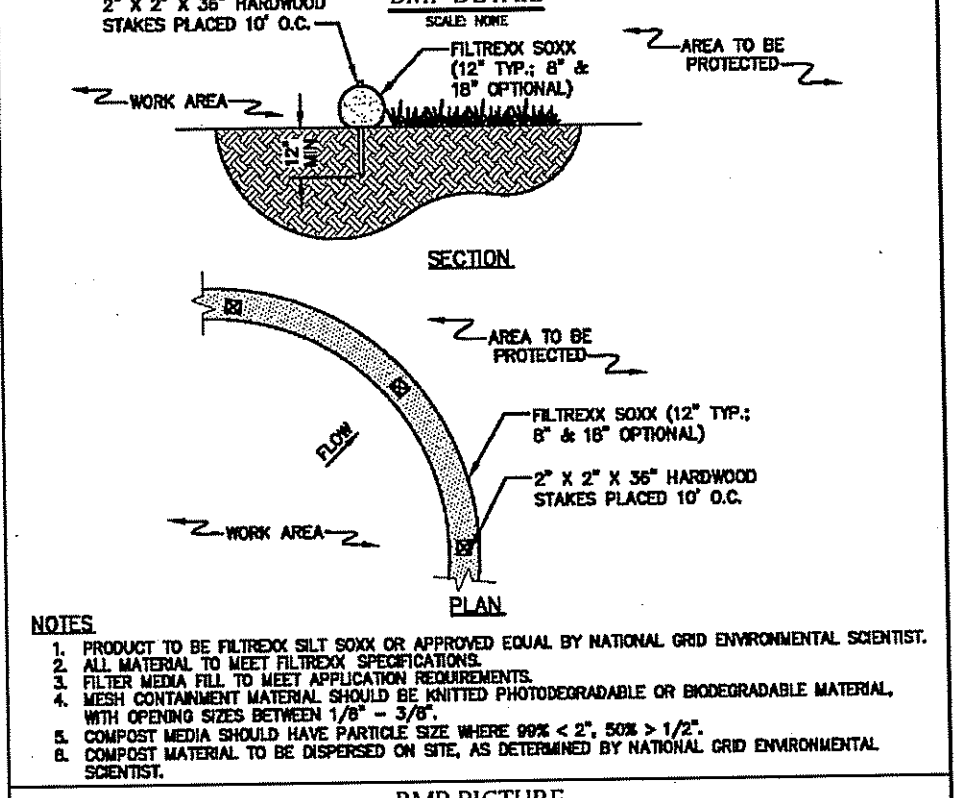
nationalgrid ENVIRONMENTAL GUIDANCE	Doc. No.	EG-303NE
	Page: 7-38	Rev. No. 4
	Date	02/20/18
SUBJECT Access, Maintenance and Construction Best Management Practices		
Reference EP No. 3 - Natural Resource Protection (Chapter 6)		



nationalgrid ENVIRONMENTAL GUIDANCE	Doc. No.	EG-303NE
	Page: 7-39	Rev. No. 4
	Date	02/20/18
SUBJECT Access, Maintenance and Construction Best Management Practices		
Reference EP No. 3 - Natural Resource Protection (Chapter 6)		



nationalgrid ENVIRONMENTAL GUIDANCE	Doc. No.	EG-303NE
	Page: 7-4	Rev. No. 4
	Date	02/20/18
SUBJECT Access, Maintenance and Construction Best Management Practices		
Reference EP No. 3 - Natural Resource Protection (Chapter 6)		



Detail #2

Detail #3

Environmental Management
JUL 16 2018
Office of Water Resources

DEPARTMENT OF ENVIRONMENTAL MANAGEMENT
OFFICE OF WATER RESOURCES
FRESHWATER WETLANDS PROGRAM
APPROVED WITH CONDITIONS
AS SPECIFIED IN THE LETTER OF APPROVAL
DATED AUG 30 2018 FILE # 18-0183
NO CHANGES ALLOWED WITHOUT PRIOR APPROVAL
APPROVED PLANS MUST BE AT CONSTRUCTION SITE

H17 CIRCUIT PROTECTION SYSTEM UPGRADES
FARNUM SUBSTATION NO. 105

Details
North Smithfield, Rhode Island



Stephen D. Wencak