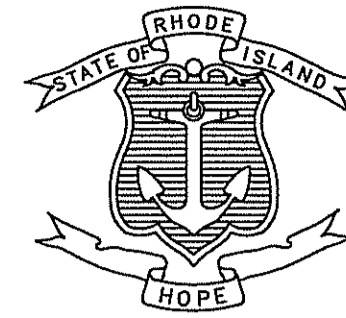


STATE OF RHODE ISLAND



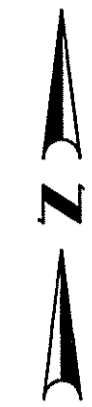
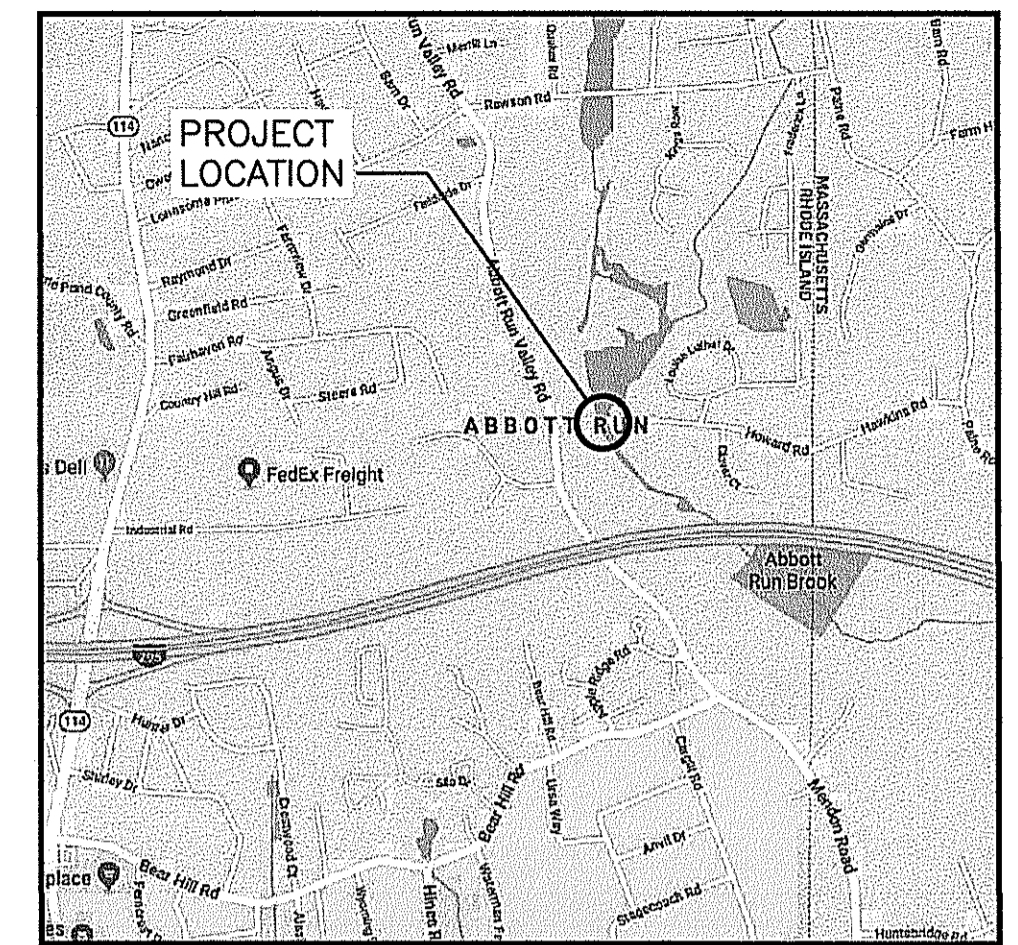
DEPARTMENT OF TRANSPORTATION

PTS ID #0145Q

ENVIRONMENTAL PERMIT PLANS
HOWARD ROAD BRIDGE NO. 459
TOWN OF CUMBERLAND
COUNTY OF PROVIDENCE

R.I. CONTRACT NO. 2016-EB-023 F.A. PROJECT NO. XXX-XXXX(XXX)

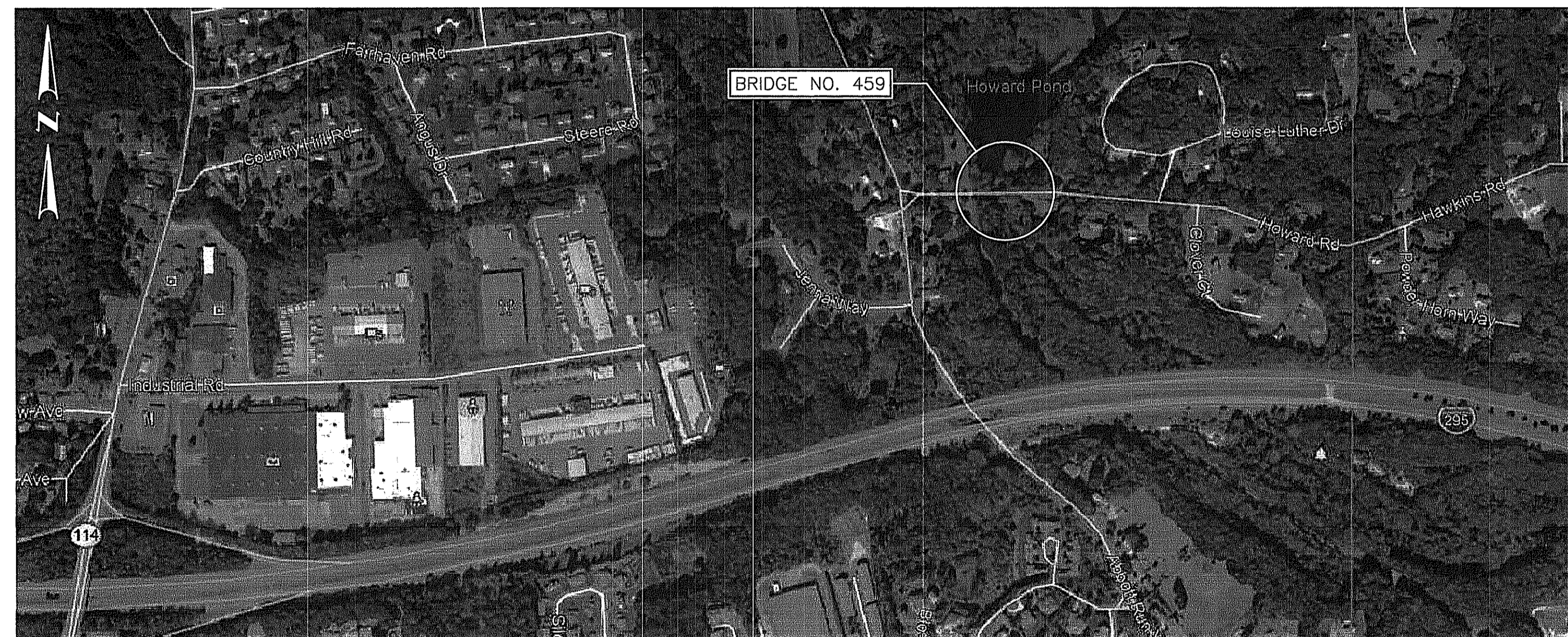
FED. ROAD DIV. NO.	STATE	FEDERAL AID PROJECT NO.	FISCAL YEAR	SHEET NO.	TOTAL SHEETS
	RI	XXX-XXXX(XXX)		1	15



LOCATION MAP
SCALE: N.T.S.

Environmental Management
AUG 27 2018
Office of Water Resources

180 FEET



LAYOUT PLAN
SCALE: N.T.S.

R.I. STANDARD SPECIFICATIONS AND STANDARD DETAILS

SPECIFICATIONS TO GOVERN THIS PROJECT ARE THE R.I. STANDARD SPECIFICATIONS FOR ROAD AND BRIDGE CONSTRUCTION, AMENDED AUGUST 2013, WITH ALL REVISIONS AND THE STATE AND FEDERAL SPECIAL PROVISIONS INCLUDED IN THE CONTRACT DOCUMENTS. STANDARD DETAILS FOR THIS PROJECT ARE R.I. STANDARD DETAILS, 1998 EDITION, WITH ALL REVISIONS.

GENERAL NOTES:

1. THESE PLANS ARE INTENDED ONLY FOR ENVIRONMENTAL PERMITTING PURPOSES. THESE PLANS HOLD AUTHORITY FOR ALL ACTIVITIES CONCERNING THE REGULATED AREA. FOR DETAILED PLANIMETRIC INFORMATION AND PAYMENT REFER TO APPLICABLE CONTRACT DOCUMENTS.
2. THE DEPARTMENT OF TRANSPORTATION WILL ONLY SUBMIT REVISIONS TO DEEP AND USACE FOR CHANGES TO THE DESIGN THAT WILL AFFECT REGULATED AREAS.
3. FOR A DESCRIPTION OF THE WATERCOURSES, WETLANDS AND WETLAND SOILS SEE RELEVANT SECTIONS OF THE PERMIT APPLICATION.
4. THE COORDINATE SYSTEM IS THE R.I. STANDARD GRID SYSTEMS, NAD 83. THE VERTICAL CONTROL IS NGVD 29.
5. ALL CONSTRUCTION ACTIVITIES WILL BE CONDUCTED IN ACCORDANCE WITH THE DEPARTMENT'S STANDARD SPECIFICATIONS FOR ROADS, BRIDGE, AND INCIDENTAL CONSTRUCTION FORM 816, SECTION 1.10 AND WILL ALSO FOLLOW BEST MANAGEMENT PRACTICES (BMPs) AND SEDIMENT EROSION & SEDIMENTATION MEASURES IN ACCORDANCE WITH THE 2002 EROSION & SEDIMENTATION CONTROL GUIDELINES AND THE 2004 STORMWATER QUALITY MANUAL.

DEPARTMENT OF ENVIRONMENTAL MANAGEMENT
OFFICE OF WATER RESOURCES
FRESHWATER WETLANDS PROGRAM
APPROVED WITH CONDITIONS
AS SPECIFIED IN THE LETTER OF APPROVAL
DATED AUG 30 2018 FILE # 18-0198
NO CHANGES ALLOWED WITHOUT PRIOR APPROVAL
APPROVED PLANS MUST BE AT CONSTRUCTION SITE
Jules H. H...

R.I. DEPARTMENT OF TRANSPORTATION

APPROVED _____

ADMINISTRATOR, PROJECT MANAGEMENT _____ DATE _____

APPROVED _____

CHIEF ENGINEER OF INFRASTRUCTURE _____ DATE _____

APPROVED _____

DIRECTOR _____ DATE _____

DEPARTMENT OF TRANSPORTATION
FEDERAL HIGHWAY ADMINISTRATION

APPROVED _____

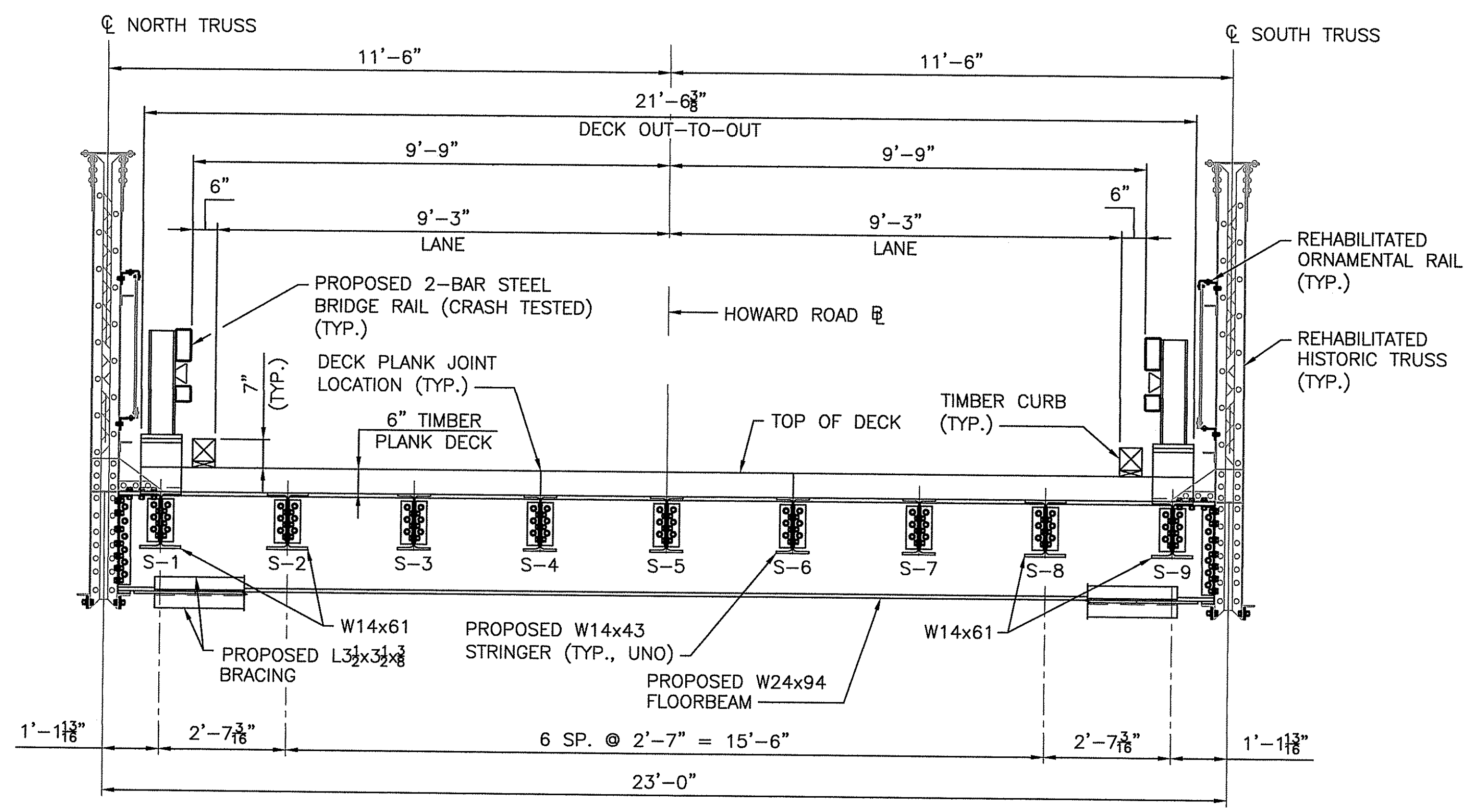
DIVISION ADMINISTRATOR _____ DATE _____



530 PRESTON AVENUE
MERIDEN, CT

Contract Number XXXX-XX-XXX
Number of Sheet 1
Total Sheets 15

FED. ROAD DIV. NO.	STATE	FEDERAL AID PROJECT NO.	FISCAL YEAR	SHEET NO.	TOTAL SHEETS
	RI	XXX-XXXX(XXX)		14	15



TYPICAL BRIDGE SECTION
SCALE: 1/2" = 1'-0"

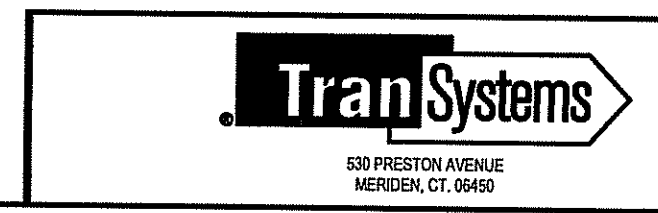
Environmental Management
AUG 27 2018
Office of Water Resources

DEPARTMENT OF ENVIRONMENTAL MANAGEMENT
OFFICE OF WATER RESOURCES
FRESHWATER WETLANDS PROGRAM
APPROVED WITH CONDITIONS
AS SPECIFIED IN THE LETTER OF APPROVAL
DATED AUG 30 2018 FILE # 18-0198
NO CHANGES ALLOWED WITHOUT PRIOR APPROVAL
APPROVED PLANS MUST BE AT CONSTRUCTION SITE

James A. Herbert

REVISIONS			RHODE ISLAND DEPARTMENT OF TRANSPORTATION REHABILITATION OF BRIDGE NO. 459 HOWARD ROAD OVER ABBOT RUN RIVER CUMBERLAND, RHODE ISLAND
NO.	DATE	BY	
			TYPICAL BRIDGE SECTION

CHECKED BY _____ DATE _____ SCALE AS NOTED



0145Q_V1_014_TYPICAL BRIDGE SECTION.dwg Plotted on Tuesday, August 14, 2018 3:55:36 PM

