

# Plan Set

RIDEM Request for Preliminary  
 Determination Application  
 Date Issued: 07/17/2018

Permit Level Management

JUL 27 2018

## Sheet Index

Number	Drawing Title	Latest Issue
1	Notes	07/17/2018
2	Soil Erosion and Sediment Control Overview	07/19/2018
3	Soil Erosion and Sediment Control Plan	07/19/2018
4-6	Detail Sheet	07/11/2018

# Fiber Communications Line Installation Johnston Substation No. 18

165 Central Avenue Johnston, Rhode Island



Site Location Map

**nationalgrid**



Kindly be advised that this Permit is not equivalent to a verification of the type or extent of freshwater wetlands on site.

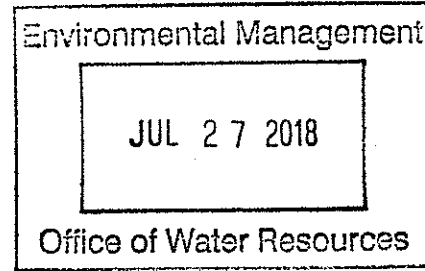
DEPARTMENT OF ENVIRONMENTAL MANAGEMENT  
 OFFICE OF WATER RESOURCES  
 FRESHWATER WETLANDS PROGRAM  
 APPROVED WITH CONDITIONS  
 AS SPECIFIED IN THE LETTER OF APPROVAL  
 DATED SEP 25 2018 FILE # 18-0199  
 NO CHANGES ALLOWED WITHOUT PRIOR APPROVAL  
 APPROVED PLANS MUST BE AT CONSTRUCTION SITE

*Jarvis D. Weneck*

**EXISTING CONDITIONS INFORMATION:**

**REFERENCES:**

1. PROPERTY BOUNDARIES BASED AN AGGREGATION OF AVAILABLE TAX ASSESSOR PARCEL DATA FROM RI MUNICIPALITIES. LINES ARE APPROXIMATE AND INTENDED TO BE A GRAPHICAL REPRESENTATION. THIS SHALL NOT BE CONSTRUED TO REPRESENT AN ACTUAL BOUNDARY SURVEY AND IS SUBJECT TO SUCH CHANGES AS AN ACCURATE BOUNDARY SURVEY MAY DISCLOSE.
2. WETLAND DELINEATION WAS PERFORMED BY VHB, PROVIDENCE OFFICE. FLAG LOCATIONS WERE LOCATED BY A GLOBAL POSITIONING SYSTEM (GPS) FIELD SURVEY CONDUCTED BY VHB IN MAY 2018. THIS SURVEY CONFORMS TO A CLASS IV STANDARD AS DEFINED IN THE PROCEDURAL AND TECHNICAL STANDARDS FOR PERFORMING LAND SURVEYING IN THE STATE OF RHODE ISLAND AND PROVIDENCE PLANTATIONS.
3. SITE IS APPROXIMATELY 700 FEET NORTHWEST OF CENTRAL AVENUE AND 100 FEET WEST OF INTERSECTION BETWEEN CENTRAL AVENUE AND ASHBY STREET.



**EROSION AND SEDIMENT CONTROL NOTES:**

1. PRIOR TO STARTING ANY SITE WORK, THE CONTRACTOR SHALL NOTIFY APPROPRIATE AGENCIES AND SHALL INSTALL EROSION CONTROL MEASURES AS SHOWN ON THE PLANS AND AS IDENTIFIED IN FEDERAL, STATE AND LOCAL APPROVAL DOCUMENTS PERTAINING TO THIS PROJECT.
2. A SOIL EROSION AND SEDIMENTATION CONTROL PLAN HAS BEEN DESIGNED TO PROTECT ON-SITE WETLANDS AND WATERCOURSES AND OFF-SITE AREAS DURING AND AFTER CONSTRUCTION. IN AREAS WHERE ACCESS TO POLE STRUCTURES IS THROUGH OR WITHIN WETLAND AREAS, TEMPORARY CONSTRUCTION MATS WILL BE PLACED.
3. IN AREAS WHERE HIGH RUNOFF VELOCITIES OR HIGH SEDIMENT LOADS ARE EXPECTED, TWO LINES OF COMPOST FILTER SOCKS WILL BE INSTALLED BACK TO BACK.
4. THE CRUSHED STONE YARD WILL FUNCTION AS A STABILIZED CONSTRUCTION ENTRANCE/EXIT.
5. ONCE WORK IS COMPLETE, FINAL SURFACE TREATMENT CONSISTING OF STRAW OR CELLULOSE MULCH WILL BE APPLIED TO STABILIZE THE DISTURBED AREAS. ANY SOIL DISTURBANCE ASSOCIATED WITH EQUIPMENT ACCESS TO STRUCTURES SHOULD BE MULCHED WITH STRAW ON ALL DISTURBED AREAS AS SOON AS POSSIBLE BUT NOT MORE THAN 14 DAYS AFTER THE CONSTRUCTION ACTIVITY IN THAT AREA HAS TEMPORARILY OR PERMANENTLY CEASED.
6. IN ACCORDANCE WITH NATIONAL GRID'S ENVIRONMENTAL GUIDANCE DOCUMENT EG -303NE, ALL STORMWATER CONTROL MEASURES, DISTURBED AREAS, AREAS USED FOR THE STORAGE OF MATERIALS THAT ARE EXPOSED TO PRECIPITATION, DISCHARGE LOCATIONS AND LOCATIONS WHERE VEHICLES ENTER OR EXIT THE SITE SHALL BE INSPECTED AT LEAST ONCE EVERY SEVEN (7) CALENDAR DAYS AND WITHIN TWENTY-FOUR (24) HOURS AFTER ANY STORM EVENT WHICH GENERATES AT LEAST 0.25 INCHES OF RAINFALL PER TWENTY-FOUR (24) HOUR PERIOD AND/OR AFTER A SIGNIFICANT AMOUNT OF RUNOFF. SUCH AREAS SHALL BE INSPECTED FOR EVIDENCE OF, OR THE POTENTIAL FOR, POLLUTANTS ENTERING THE WATERS OF THE STATE OR A SEPARATE STORM SEWER SYSTEM. ALL BMPs SHALL BE MAINTAINED TO PREVENT UNCONTROLLED RELEASES OF MEASURABLE AMOUNTS OF SEDIMENT OR SEDIMENT LADEN WATER FROM TRAVELING BEYOND THE LIMITS OF DISTURBANCE.
7. SEDIMENT SHALL BE REMOVED FROM BEHIND BARRIERS IF GREATER THAN 6 INCHES DEEP OR AS NEEDED.
8. DAMAGED OR DETERIORATED EROSION/SEDIMENTATION CONTROL ITEMS WILL BE REPAIRED IMMEDIATELY AFTER IDENTIFICATION.
9. EROSION CONTROL MEASURES SHALL REMAIN IN PLACE UNTIL ALL DISTURBED EARTH HAS BEEN SECURELY STABILIZED. ONCE THE SITE IS STABILIZED, ANY EROSION CONTROL BARRIERS WILL BE REMOVED AND PROPERLY DISPOSED OF BY THE CONTRACTOR.
10. IN THE EVENT OF A FUEL SPILL OR EQUIPMENT MALFUNCTION RESULTING IN A RELEASE OF HAZARDOUS MATERIAL, ALL WORK WILL BE STOPPED IN THIS AREA UNTIL THE RELEASE/SPILL IS CLEANED UP.
11. EQUIPMENT USED FOR CONSTRUCTION WILL BE PROPERLY MAINTAINED AND OPERATED TO REDUCE THE CHANCES OF SPILL OCCURRENCES OF PETROLEUM PRODUCTS. REFUELING OF EQUIPMENT WILL BE REQUIRED TO CARRY SPILL CONTAINMENT AND PREVENTION DEVICES (I.E., ABSORBENT PADS, CLEAN UP RAGS, FIVE GALLON CONTAINERS, ABSORBENT MATERIAL, ETC.) AT ALL TIMES. IN ADDITION, MAINTENANCE EQUIPMENT AND REPLACEMENT PARTS FOR CONSTRUCTION EQUIPMENT WILL BE ON HAND TO REPAIR FAILURES AND STOP A SPILL IN THE EVENT OF EQUIPMENT MALFUNCTION.
12. ANY HAZARDOUS WASTE SPILLS SHALL BE CLEANED UP IMMEDIATELY, AND IF THE SPILL AMOUNT IS EQUAL TO OR EXCEEDS THE EPA REPORTABLE QUANTITY (RQ) FOR THAT SUBSTANCE IN ACCORDANCE WITH 40 CFR PARTS 1010, 117, OR 302, THE CONTRACTOR SHALL IMMEDIATELY CONTACT THE NATIONAL RESPONSE CENTER AT 1-800-424-8802. THE CONTRACTOR WILL ALSO BE RESPONSIBLE FOR SUBMITTING IN WRITING A DESCRIPTION OF THE RELEASE TO THE EPA REGIONAL OFFICE AND RIDEM PROVIDING THE DATE AND CIRCUMSTANCES OF THE RELEASE AND THE STEPS TO BE TAKEN TO PREVENT ANOTHER RELEASE. DIRECTIONS FOR CLEANING UP SPILLS SHALL BE CLEARLY POSTED AT A DESIGNATED ON-SITE LOCATION, AND CONSTRUCTION PERSONNEL SHALL BE MADE AWARE OF THE PROCEDURES AND LOCATION OF CLEANUP SUPPLIES. PERSONNEL SHALL WEAR APPROPRIATE PROTECTIVE GEAR AND HAVE PROPER TRAINING TO PREVENT INJURY FROM CONTACT WITH ANY HAZARDOUS SUBSTANCES.
13. NO GRADE CHANGES ARE PROPOSED.

DEPARTMENT OF ENVIRONMENTAL MANAGEMENT  
OFFICE OF WATER RESOURCES  
FRESHWATER WETLANDS PROGRAM  
APPROVED WITH CONDITIONS  
AS SPECIFIED IN THE LETTER OF APPROVAL

DATED SEP 25 2018 FILE # 18-0199  
NO CHANGES ALLOWED WITHOUT PRIOR APPROVAL  
APPROVED PLANS MUST BE AT CONSTRUCTION SITE

*Jonathan D. Wenczek*

Not to Scale

**FIBER COMMUNICATIONS LINE INSTALLATION  
JOHNSTON SUBSTATION NO. 18**

Notes

Johnston, Rhode Island  
Sheet 1 of 6

Source: VHB, RIGIS

**nationalgrid**

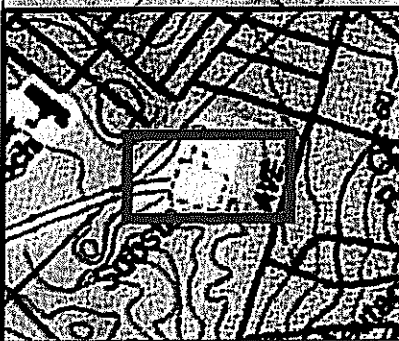
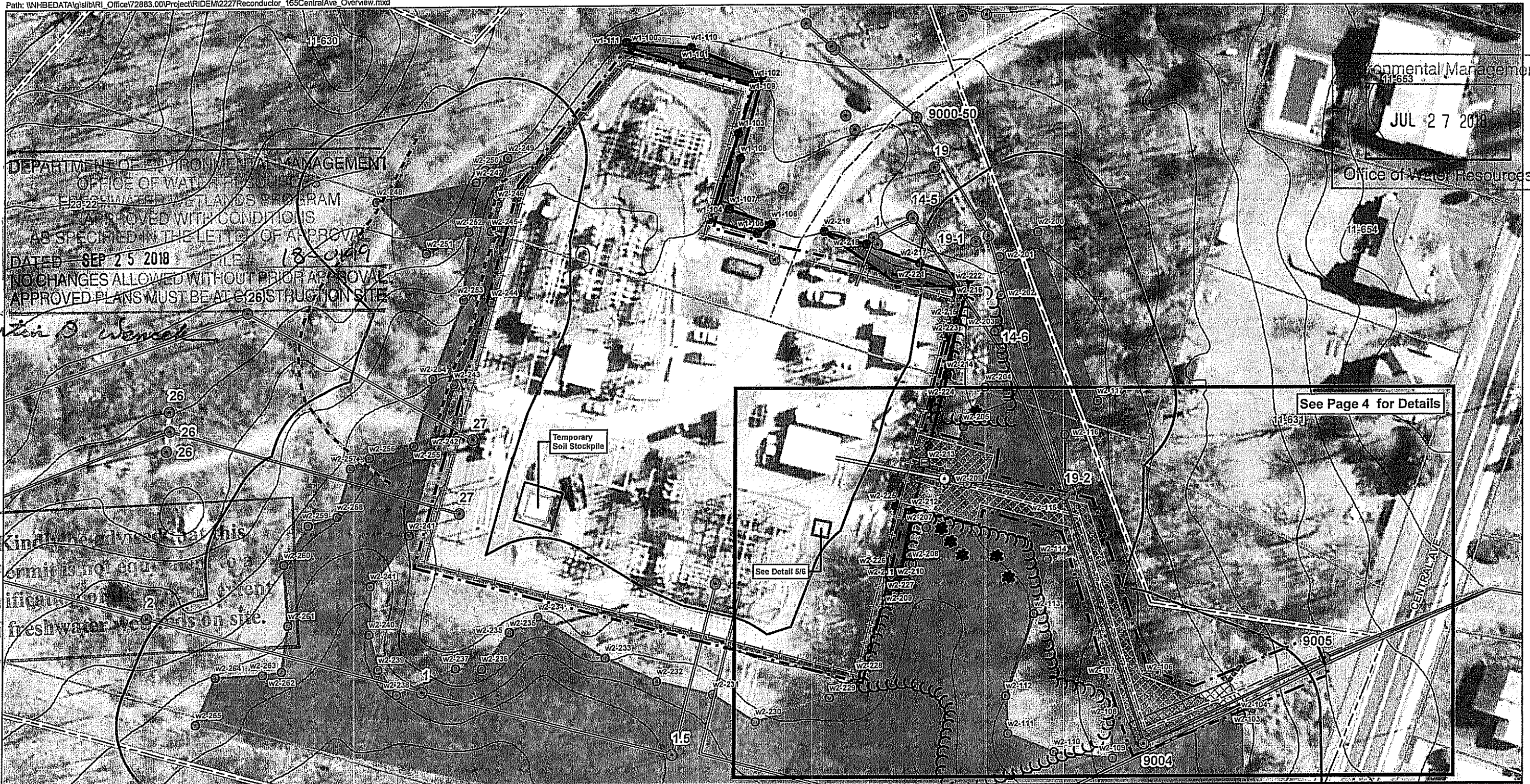


Environmental Management  
 11-653  
 JUL 27 2018  
 Office of Water Resources

DEPARTMENT OF ENVIRONMENTAL MANAGEMENT  
 OFFICE OF WATER RESOURCES  
 FRESHWATER WETLANDS PROGRAM  
 APPROVED WITH CONDITIONS  
 AS SPECIFIED IN THE LETTER OF APPROVAL  
 DATED SEP 25 2018 FILE # 18-0119  
 NO CHANGES ALLOWED WITHOUT PRIOR APPROVAL  
 APPROVED PLANS MUST BE AT 226 STRUCTURE SITE

*expansion of wetland*

Kindly be advised that this  
 Permit is not equivalent to a  
 verification of the presence  
 of freshwater wetlands on site.



<ul style="list-style-type: none"> <li>Existing Structure</li> <li>Proposed Utility Pole</li> <li>Guy Wire Anchor</li> <li>Proposed OH Fiber Line</li> <li>Existing Distribution Line</li> <li>T172 Tap Line</li> <li>S171 Tap Line</li> <li>2227 Line</li> <li>Johnston-Cranston Tap</li> <li>Proposed Underground Conduit</li> </ul>	<ul style="list-style-type: none"> <li>Wetland Flag</li> <li>ASSF Flags</li> <li>Delineated Wetland Edge</li> <li>Delineated ASSF Edge</li> <li>Estimated ASSF</li> <li>Swamp</li> <li>ASSF</li> <li>50' Perimeter Wetland</li> </ul>	<ul style="list-style-type: none"> <li>Drainage Pipe</li> <li>Compost Filter Sock</li> <li>Access Route</li> <li>Fence Line</li> <li>Construction Mats Previously Approved Under ACOE Permit NAE-2018-00035</li> <li>Temporary Construction Mats</li> </ul>	<ul style="list-style-type: none"> <li>Trees to be Trimmed</li> <li>Existing Tree Line</li> <li>Approximate ROW</li> <li>Property Lines</li> <li>Limit of Disturbance</li> <li>2-ft Contour</li> </ul>
--	---	---	--

**FIBER COMMUNICATIONS LINE INSTALLATION  
 JOHNSTON SUBSTATION NO. 18**

Overview  
 Soil Erosion and Sediment Control Plan  
 Johnston, Rhode Island  
 Sheet 2 of 6

1 Inch = 60 Feet  
 0 30 60 120  
 Feet

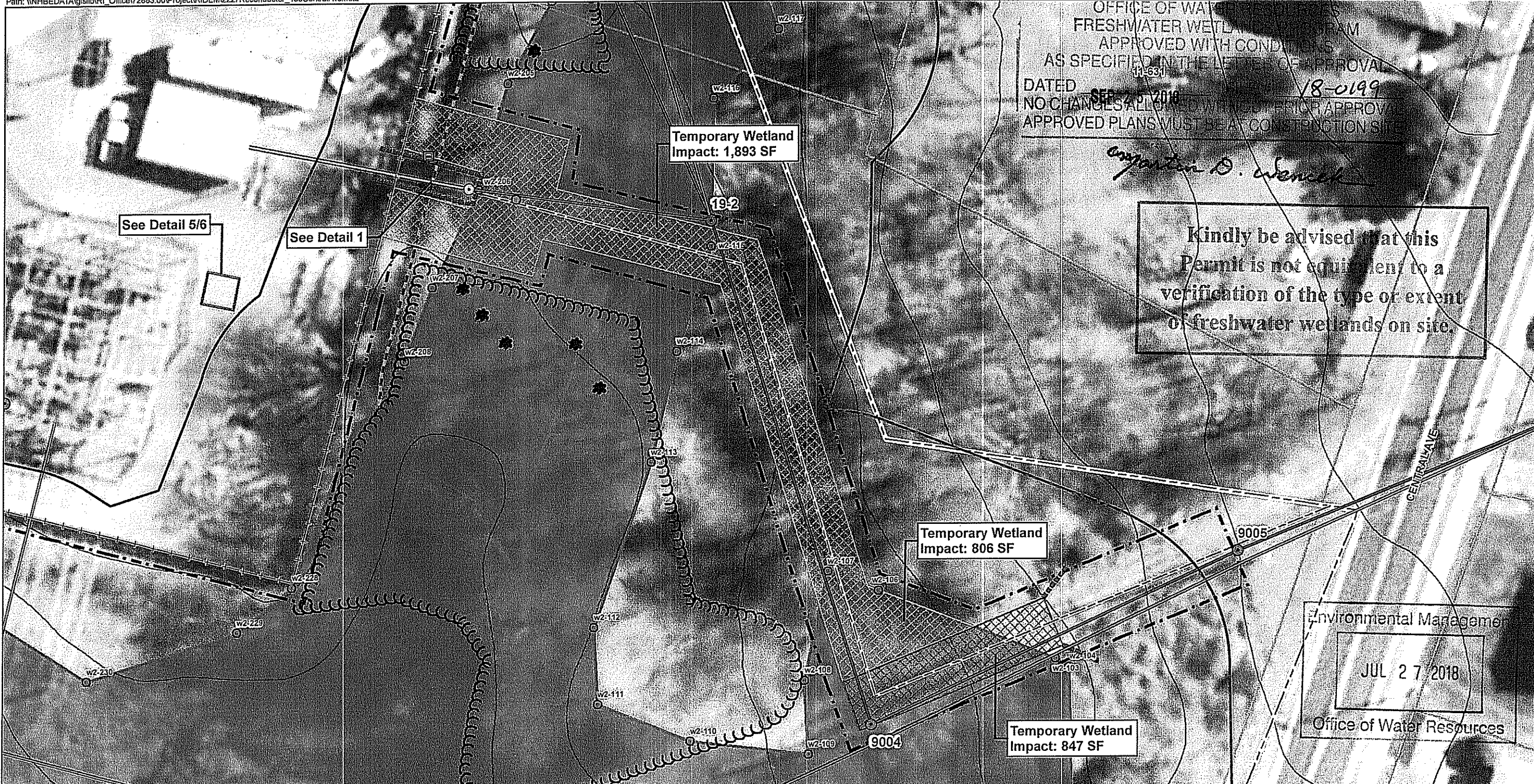
Date: 7/20/2018

nationalgrid

OFFICE OF WATER RESOURCES  
 FRESHWATER WETLANDS PERMIT  
 APPROVED WITH CONDITIONS  
 AS SPECIFIED IN THE LETTER OF APPROVAL  
 11-631  
 DATED SEP 27 2018 18-0199  
 NO CHANGES ALLOWED WITHOUT SUPERVISOR APPROVAL  
 APPROVED PLANS MUST BE AT CONSTRUCTION SITE

*Angerton D. Wencel*

Kindly be advised that this Permit is not equivalent to a verification of the type or extent of freshwater wetlands on site.



Environmental Management  
 JUL 27 2018  
 Office of Water Resources

Existing Structure	Wetland Flag	Culvert	Approximate ROW
Proposed Utility Pole	Delineated Wetland Edge	Trees to be Trimmed	Property Lines
Guy Wire Anchor	Estimated ASSF	Existing Tree Line	Limit of Disturbance
Proposed OH Fiber Line	Swamp	Compost Filter Sock	
Existing Distribution Line	50' Perimeter Wetland	Fence Line	
T172 Tap Line	Construction Mats Previously Approved Under ACOE Permit: NAE-2018-00035	Access Route	
S171 Tap Line	Temporary Construction Mats	2-ft Contour	
2227 Line			
Johnston-Cranston Tap			
Proposed Underground Conduit			

**FIBER COMMUNICATIONS LINE INSTALLATION**  
**JOHNSTON SUBSTATION NO. 18**

Soil Erosion and Sediment Control Plan  
 Johnston, Rhode Island  
 Sheet 3 of 6

1 Inch = 30 Feet  
 0 15 30 60  
 Feet

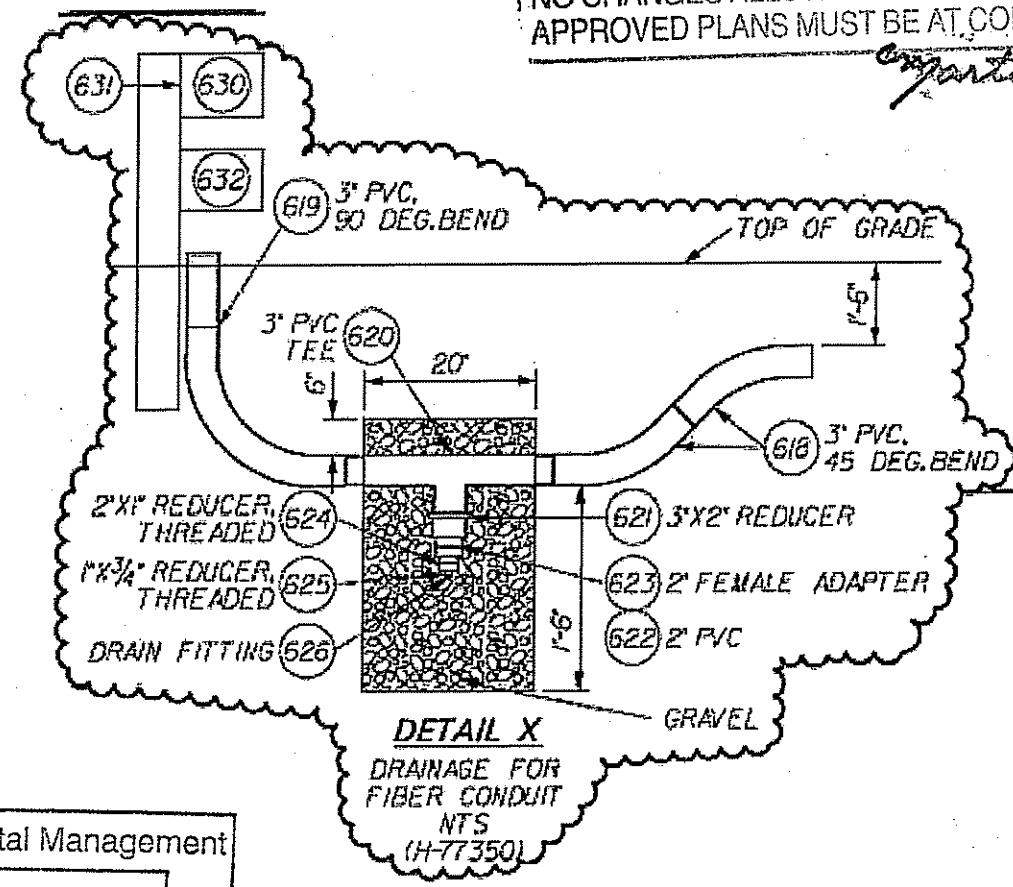
Date: 7/20/2018

**nationalgrid**

**vhb**

DEPARTMENT OF ENVIRONMENTAL MANAGEMENT  
 OFFICE OF WATER RESOURCES  
 FRESHWATER WETLANDS PROGRAM  
 APPROVED WITH CONDITIONS  
 AS SPECIFIED IN THE LETTER OF APPROVAL  
 DATED SEP 25 2018 FILE # 18-0199  
 NO CHANGES ALLOWED WITHOUT PRIOR APPROVAL  
 APPROVED PLANS MUST BE AT CONSTRUCTION SITE

*Christopher D. Wencek*

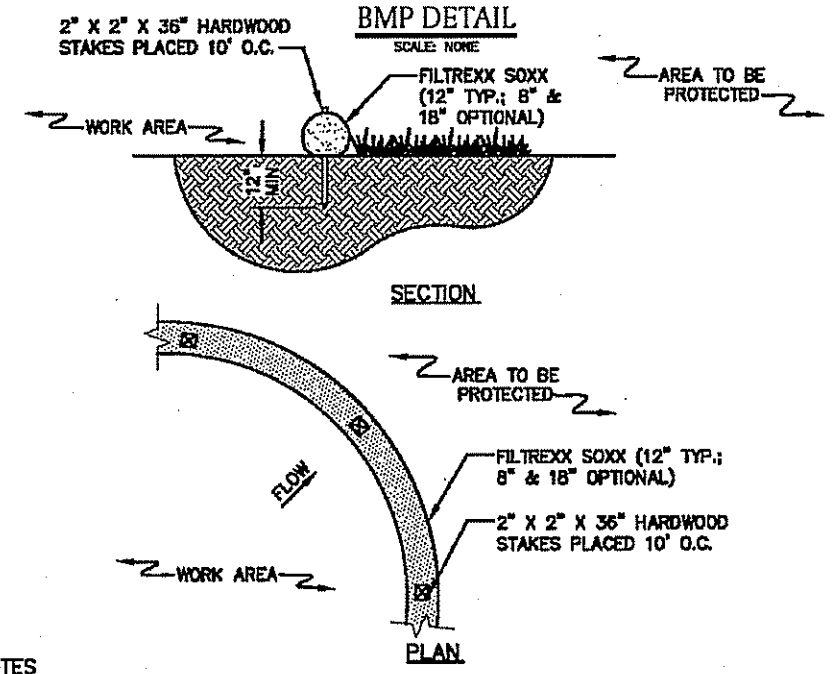


Environmental Management  
 JUL 27 2018  
 Office of Water Resources

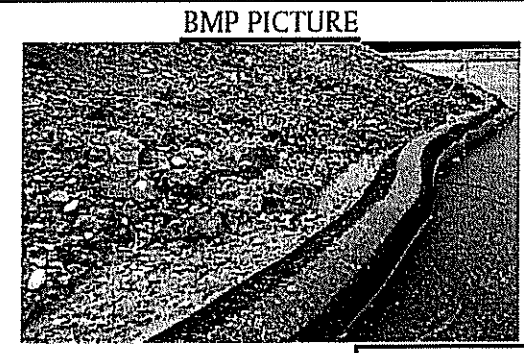
Detail #1

Kindly be advised that this Permit is not equivalent to a verification of the type or extent of freshwater wetlands on site.

nationalgrid ENVIRONMENTAL GUIDANCE	Doc. No.	EG-303NE
	Page: 7-4	Rev. No. 4
	Date	02/20/18
SUBJECT Access, Maintenance and Construction Best Management Practices		Reference EP No. 3 - Natural Resource Protection (Chapter 6)



- NOTES
1. PRODUCT TO BE FILTREXX SILT SOXX OR APPROVED EQUAL BY NATIONAL GRID ENVIRONMENTAL SCIENTIST.
  2. ALL MATERIAL TO MEET FILTREXX SPECIFICATIONS.
  3. FILTER MEDIA FILL TO MEET APPLICATION REQUIREMENTS.
  4. MESH CONTAINMENT MATERIAL SHOULD BE KNITTED PHOTODEGRADABLE OR BIODEGRADABLE MATERIAL, WITH OPENING SIZES BETWEEN 1/8" - 3/8".
  5. COMPOST MEDIA SHOULD HAVE PARTICLE SIZE WHERE 99% < 2", 50% > 1/2".
  6. COMPOST MATERIAL TO BE DISPERSED ON SITE, AS DETERMINED BY NATIONAL GRID ENVIRONMENTAL SCIENTIST.



\* PICTURE AND DETAIL PROVIDED BY FILTREXX LAND IMPROVEMENT SYSTEMS APPROVED BY VICE PRESIDENT, ENVIRONMENTAL SERVICES. PRINTED COPIES ARE NOT DOCUMENT CONTROLLED. FOR LATEST AUTHORIZED VERSION PLEASE REFER TO THE NATIONAL GRID ENVIRONMENTAL INFOINET SITE.

SEC-4  
 SILT SOXX \*

Detail #2

**FIBER COMMUNICATIONS LINE INSTALLATION  
 JOHNSTON SUBSTATION NO. 18**

Not to Scale

Details  
 Sheet 4 of 6

Source:

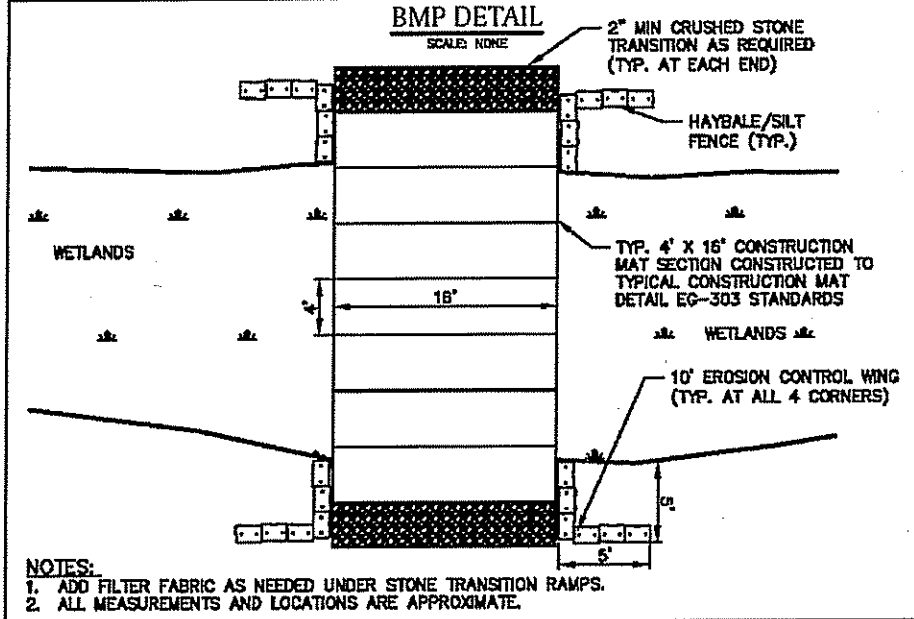


JUL 27 2018

**nationalgrid** ENVIRONMENTAL GUIDANCE

Doc. No. EG-303NE  
Page: 7-20  
Date: 02/20/18

SUBJECT: Access, Maintenance and Construction Best Management Practices  
Reference: EP No. 3 - Natural Resource Protection (Chapter 6)



**BMP PICTURE**



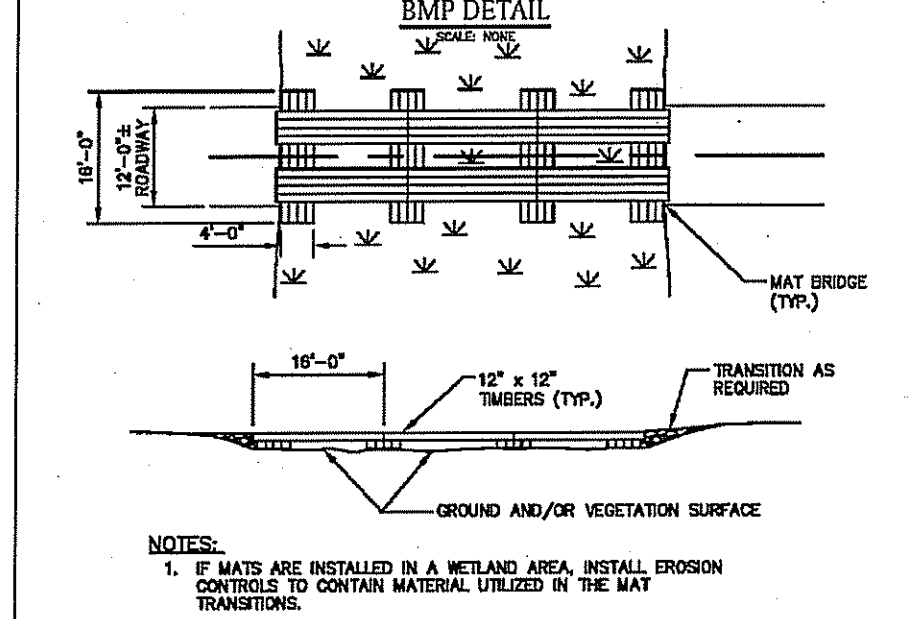
CM-4  
CONSTRUCTION MAT LAYOUT (WITH TRANSITION AND BMPs)

APPROVED BY: VICE PRESIDENT, ENVIRONMENTAL SERVICES  
PRINTED COPIES ARE NOT DOCUMENT CONTROLLED. FOR LATEST AUTHORIZED VERSION PLEASE REFER TO THE NATIONAL GRID ENVIRONMENTAL INFOINET SITE.

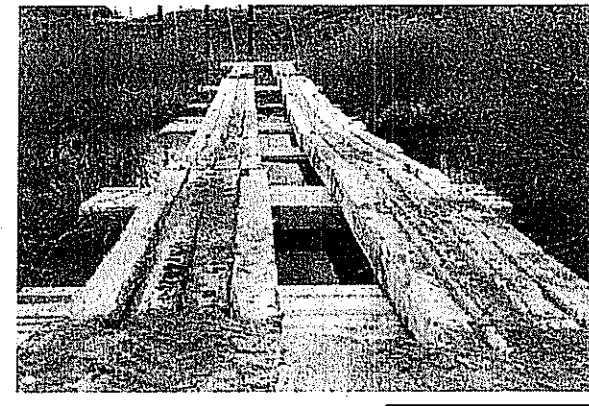
**nationalgrid** ENVIRONMENTAL GUIDANCE

Doc. No. EG-303NE  
Page: 7-17  
Date: 02/20/18

SUBJECT: Access, Maintenance and Construction Best Management Practices  
Reference: EP No. 3 - Natural Resource Protection (Chapter 6)



**BMP PICTURE**



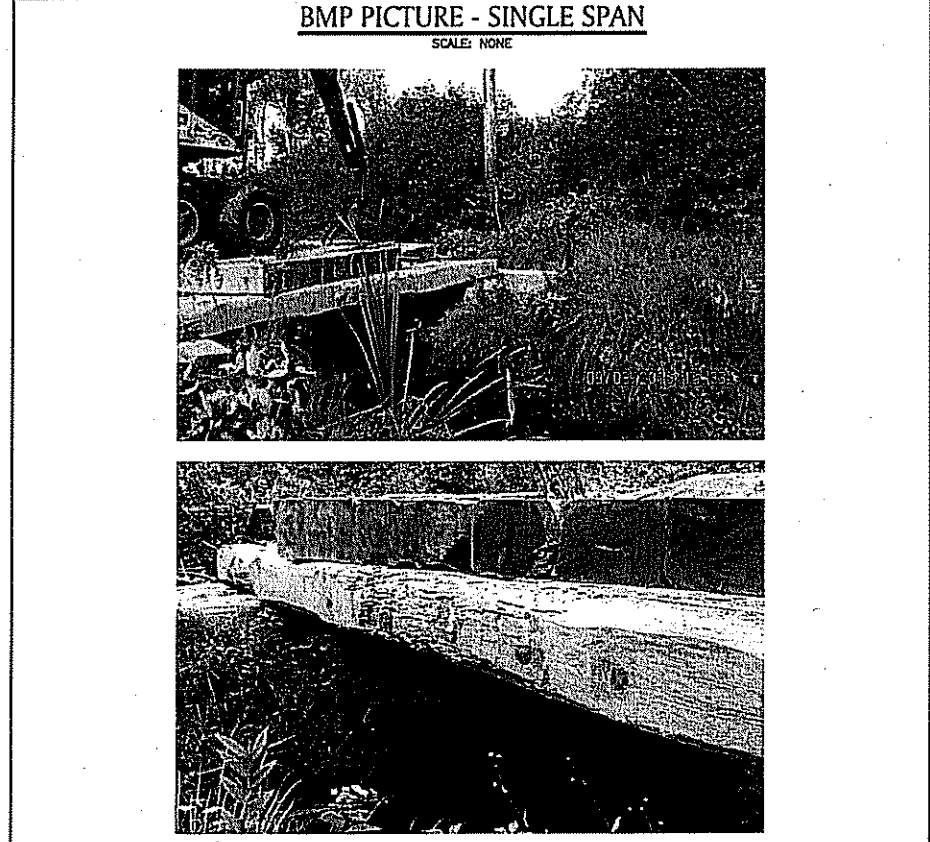
CM-2  
CONSTRUCTION MAT BRIDGE (1 OF 2)

APPROVED BY: VICE PRESIDENT, ENVIRONMENTAL SERVICES  
PRINTED COPIES ARE NOT DOCUMENT CONTROLLED. FOR LATEST AUTHORIZED VERSION PLEASE REFER TO THE NATIONAL GRID ENVIRONMENTAL INFOINET SITE.

**nationalgrid** ENVIRONMENTAL GUIDANCE

Doc. No. EG-303NE  
Page: 7-18  
Date: 02/20/18

SUBJECT: Access, Maintenance and Construction Best Management Practices  
Reference: EP No. 3 - Natural Resource Protection (Chapter 6)



- NOTES:
- WHERE STREAM WIDTH ALLOWS, INSTALL CONSTRUCTION MATS TO SPAN THE WATERCOURSE IN ITS ENTIRETY WITHOUT STRINGER PLACEMENT IN THE WATER OR ANY RESTRICTION OF STREAM FLOW.
  - INSTALLATION OF THE CONSTRUCTION MAT BRIDGE SHALL NOT DAMAGE THE STREAM BED AND BANKS. WHERE POSSIBLE, FOOTERS SHALL BE PLACED PARALLEL TO THE TOP OF THE STREAM BANKS, WITH ACCESS MATTING PLACED ACROSS THE TOP OF THE STRINGERS DISTRIBUTING THE WEIGHT OF THE CONSTRUCTION EQUIPMENT.
  - AT STREAM CROSSINGS THAT CANNOT BE SPANNED BY A SINGLE SECTION OF CONSTRUCTION MATTING, AND WHERE PERMITS ALLOW, STRINGERS SHALL BE PLACED ATOP THE STREAM BED PARALLEL TO THE FLOW OF WATER.

CM-2  
CONSTRUCTION MAT BRIDGE (2 OF 2)

APPROVED BY: VICE PRESIDENT, ENVIRONMENTAL SERVICES  
PRINTED COPIES ARE NOT DOCUMENT CONTROLLED. FOR LATEST AUTHORIZED VERSION PLEASE REFER TO THE NATIONAL GRID ENVIRONMENTAL INFOINET SITE.

Detail #3

DEPARTMENT OF ENVIRONMENTAL MANAGEMENT  
OFFICE OF WATER RESOURCES

Not to Scale

Kindly be advised that this Permit is not equivalent to a verification of the type or extent of freshwater wetlands on site.

**FIBER COMMUNICATIONS LINE INSTALLATION  
JOHNSTON SUBSTATION NO. 18**

Details  
Sheet 5 of 6

FRESHWATER WETLANDS PROGRAM  
APPROVED WITH CONDITIONS  
AS SPECIFIED IN THE LETTER OF APPROVAL  
DATED SEP 25 2018 FILE # 18-0199  
NO CHANGES ALLOWED WITHOUT PRIOR APPROVAL  
APPROVED PLANS MUST BE AT CONSTRUCTION SITE

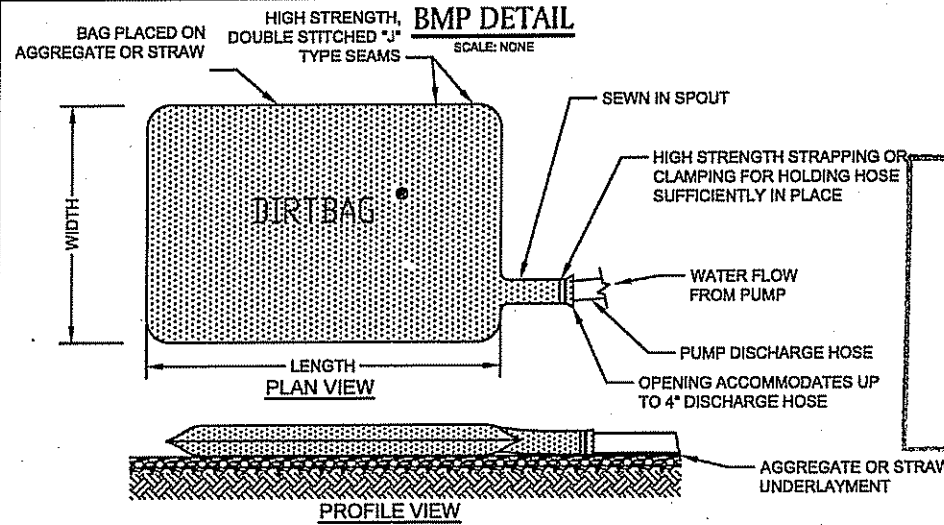
Source:  
**nationalgrid**  
**vhb**

**nationalgrid** ENVIRONMENTAL GUIDANCE

Doc. No. EG-303NE  
 Page: 7-39 Rev. No. 4  
 Date: 02/20/18

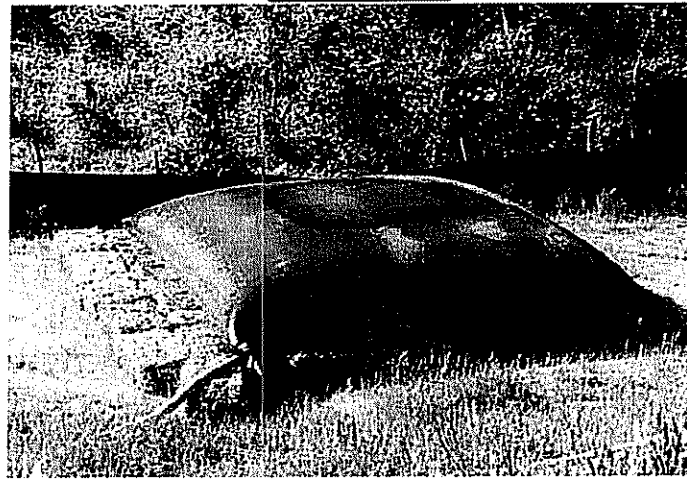
SUBJECT  
 Access, Maintenance and Construction  
 Best Management Practices

Reference  
 EP No. 3 - Natural Resource  
 Protection (Chapter 6)



NOTE:  
 ONCE PUMPING COMMENCES, THE DIRT BAG SHALL BE MONITORED FREQUENTLY TO ASSURE THAT THE CONNECTIONS ARE SECURELY FASTENED AND THE RATE OF WATER DELIVERY TO THE STRUCTURE IS LOW ENOUGH TO PREVENT UNFILTERED WATER FROM FLOWING FROM THE HOSE CONNECTIONS OR BAG.

BMP PICTURE



\* PICTURE AND DETAIL PROVIDED BY ACF ENVIRONMENTAL APPROVED BY VICE PRESIDENT, ENVIRONMENTAL SERVICES PRINTED COPIES ARE NOT DOCUMENT CONTROLLED. FOR LATEST AUTHORIZED VERSION PLEASE REFER TO THE NATIONAL GRID ENVIRONMENTAL INFONET SITE.

AA-12  
 DIRTBAG®

*Signature*

Detail #5  
 DEPARTMENT OF ENVIRONMENTAL MANAGEMENT  
 OFFICE OF WATER RESOURCES

FRESHWATER WETLANDS PROGRAM  
 APPROVED WITH CONDITIONS  
 AS SPECIFIED IN THE LETTER OF APPROVAL  
 DATED SEP 25 2018 FILE # 18-0199  
 NO CHANGES ALLOWED WITHOUT PRIOR APPROVAL  
 APPROVED PLANS MUST BE AT CONSTRUCTION SITE

Not to Scale

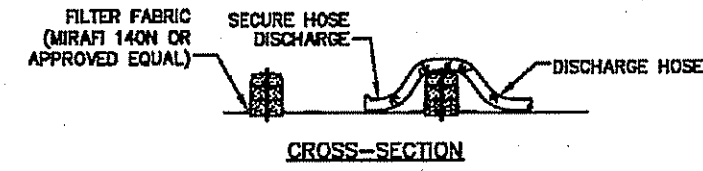
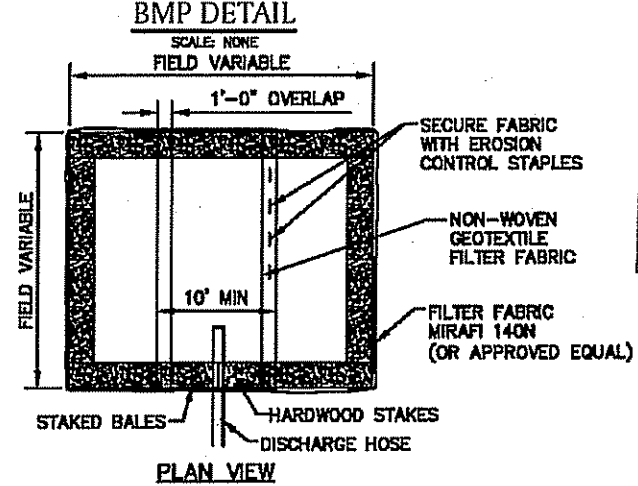
Kindly be advised that this Permit is not equivalent to a verification of the type or extent of freshwater wetlands on site.

**nationalgrid** ENVIRONMENTAL GUIDANCE

Doc. No. EG-303NE  
 Page: 7-38 Rev. No. 4  
 Date: 02/20/18

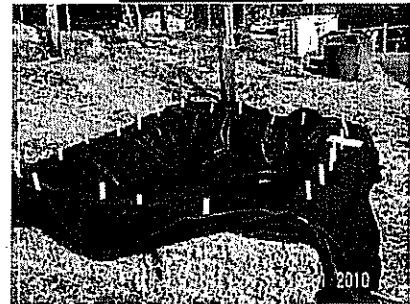
SUBJECT  
 Access, Maintenance and Construction  
 Best Management Practices

Reference  
 EP No. 3 - Natural Resource  
 Protection (Chapter 6)



- NOTES:
1. NUMBER OF BALES MAY VARY DEPENDING ON SITE CONDITIONS.
  2. THE BASIN TO BE SIZED TO PREVENT DISCHARGE WATER FROM OVERTOPPING BASIN.
  3. KEEP AS FAR FROM WETLANDS AS PRACTICAL.
  4. CLEAN AND REMOVE AS SOON AS DEWATERING IS COMPLETE.

BMP PICTURE



AA-10  
 DEWATERING BASIN  
 (SMALL SCALE)

APPROVED BY VICE PRESIDENT, ENVIRONMENTAL SERVICES PRINTED COPIES ARE NOT DOCUMENT CONTROLLED. FOR LATEST AUTHORIZED VERSION PLEASE REFER TO THE NATIONAL GRID ENVIRONMENTAL INFONET SITE.

Detail #6

**FIBER COMMUNICATIONS LINE INSTALLATION  
 JOHNSTON SUBSTATION NO. 18**

Details  
 Sheet 6 of 6

Environmental Management  
 JUL 27 2018  
 Office of Water Resources

