

LOCUS MAP
NOT TO SCALE

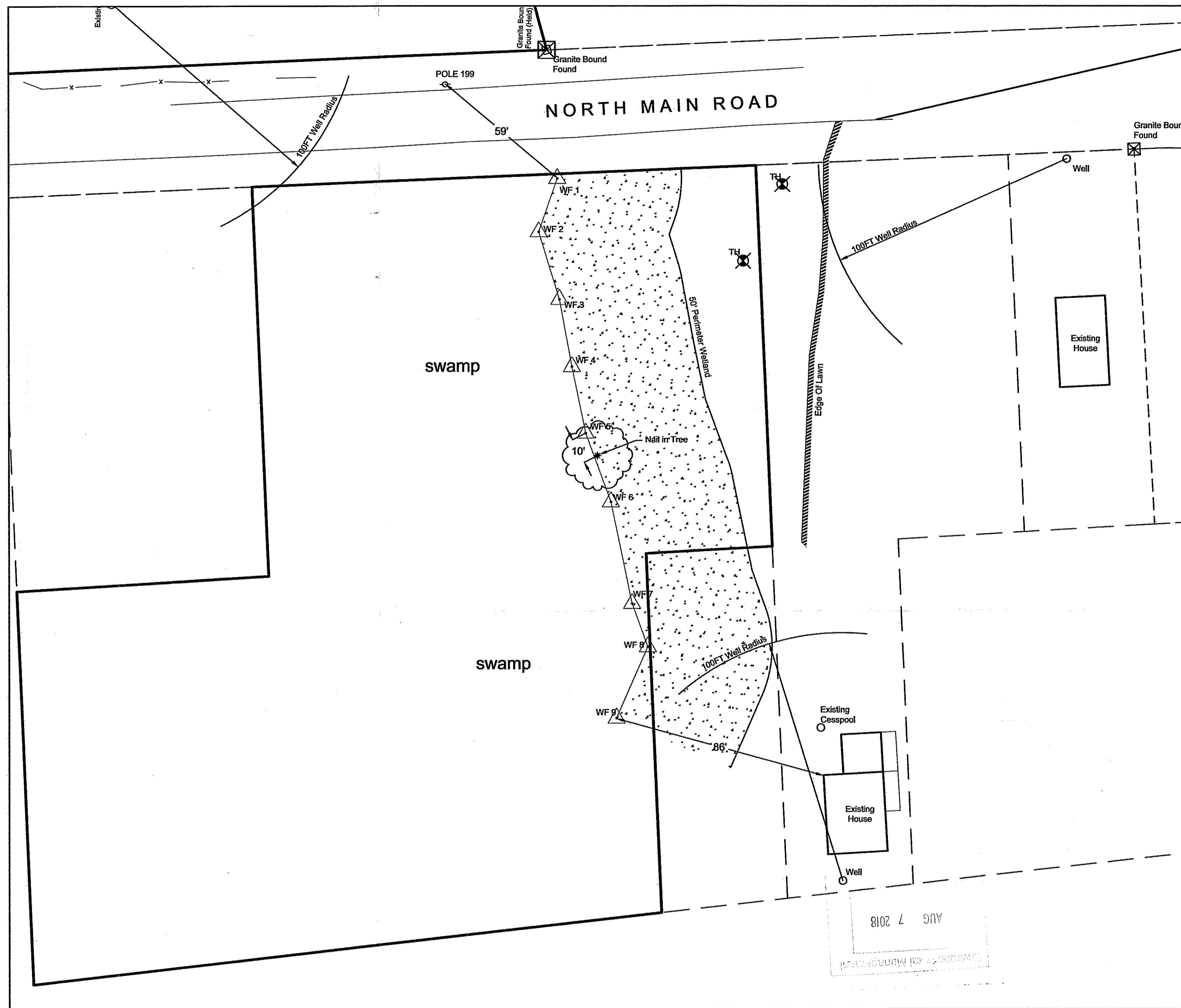
BEING A.P. 1, LOT 241
LOT AREA = 56,628 S.F.

Wetland edge was flagged by Natural Resource Services, Inc. May 11, 2018
Wetland flags were located with a positional accuracy of +/- 1' using a Topcon GPT 9003A Robotic Total Station by American Engineering, Inc.

FEMA DETERMINATION
ZONE "X" - AREA OF MINIMAL FLOODING
MAP NO. - 440005C0078J
REVISED: SEPTEMBER 9, 2013



Scale 1" = 30'



AUG 7 2018
AMERICAN ENGINEERING, INC.

1 sheets

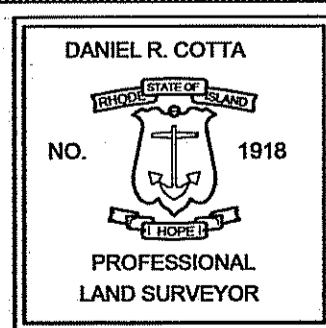
AMERICAN ENGINEERING, INC.

DANIEL R. COTTA Professional Engineer / Professional Land Surveyor

400 South County Trail - Suite A 201
Exeter, Rhode Island 02822

DCotta@AmericanEngineeringRI.com

Phone (401) 294-4090 / Fax (401) 294-3625



Drawn By: *MjC* Checked By: *DrC*
Scale: 1" = 30' Date: 07/27/18

REVISIONS			
NO.	REVISION	BY	DATE

Wetland Submission

FOR

PETER GADOURY

LOCATED AT

**POLE 199 NORTH MAIN ROAD
JAMESTOWN, R.I.**