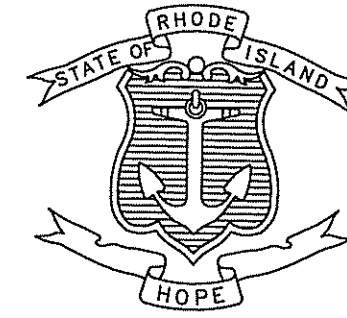


INDEX

SHEET NO.	DESCRIPTION
1	COVER SHEET
2	HIGHWAY PLAN
3-5	BRIDGE GENERAL NOTES 1-3
6	GENERAL PLAN AND ELEVATION
7	WEST HEADWALL DETAILS
8	RIPRAP EROSION REPAIR DETAILS

STATE OF RHODE ISLAND

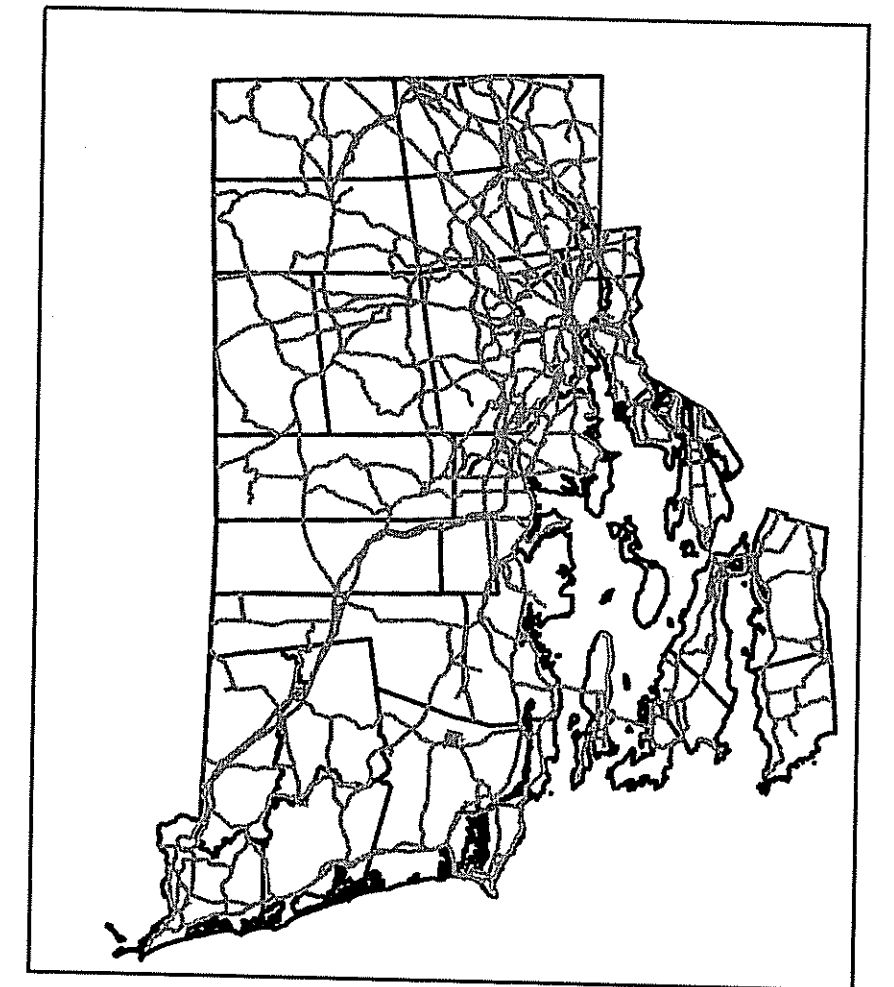


DEPARTMENT OF TRANSPORTATION
 PLAN OF PROPOSED
 BRIDGE PRESERVATION GROUP 5
 I-95 CORRIDOR BRIDGES

R.I. CONTRACT NO. 2018-CB-084 F.A. PROJECT NO. BHO-0005(029)

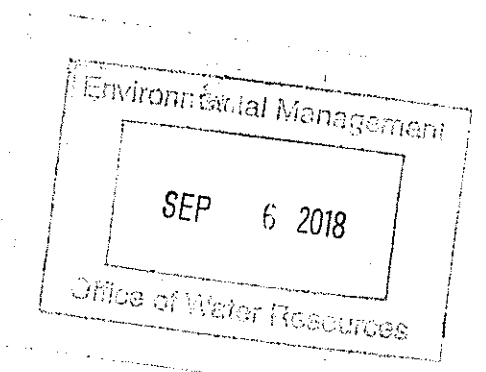
PROJECT LIMITS
 BRIDGE NO. 080501
 WARWICK, KENT COUNTY

FED. ROAD DIV. NO.	STATE	FEDERAL AID PROJECT NO.	FISCAL YEAR	SHEET NO.	TOTAL SHEETS
	RI	BHO-0005(029)	2018	1	8



LOCATION MAP
 NTS

HURRICANE EVACUATION ROUTE
 THIS PROJECT INCLUDES WORK ON A DESIGNATED HURRICANE EVACUATION ROUTE AS FOLLOWS:
 - I-95 NB AND SB
 - NEW LONDON TURNPIKE
 - I-295 NB
 - ROUTE 4



DEPARTMENT OF ENVIRONMENTAL MANAGEMENT
 OFFICE OF WATER RESOURCES
 FRESHWATER WATERS PROGRAM
 APPROVED WITH CONDITIONS
 AS SPECIFIED IN THE LETTER OF APPROVAL
 DATED 9/5/2018 FILE # B-024
 NO CHANGES ALLOWED WITHOUT PRE-APPROVAL
 APPROVED PLANS MUST BE AT CONSTRUCTION SITE

RIDEM - REQUEST FOR PRELIMINARY DETERMINATION BRIDGE 080501

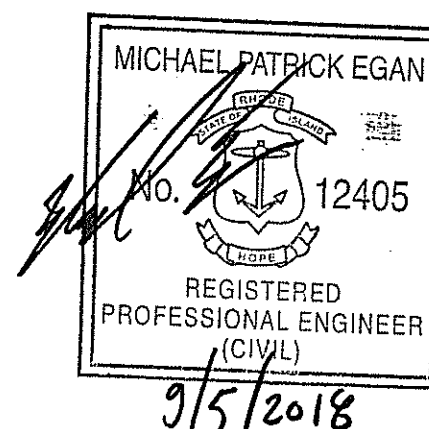
R.I. STANDARD SPECIFICATIONS AND STANDARD DETAILS
 SPECIFICATIONS TO GOVERN THIS PROJECT ARE THE R.I. STANDARD SPECIFICATIONS FOR ROAD AND BRIDGE CONSTRUCTION, AMENDED AUGUST 2013, WITH ALL REVISIONS AND THE STATE AND FEDERAL SPECIAL PROVISIONS INCLUDED IN THE CONTRACT DOCUMENTS. STANDARD DETAILS FOR THIS PROJECT ARE R.I. STANDARD DETAILS, 1998 EDITION, WITH ALL REVISIONS.

SCALES OF DRAWINGS

Plans 1 inch = 20 feet (unless noted otherwise)

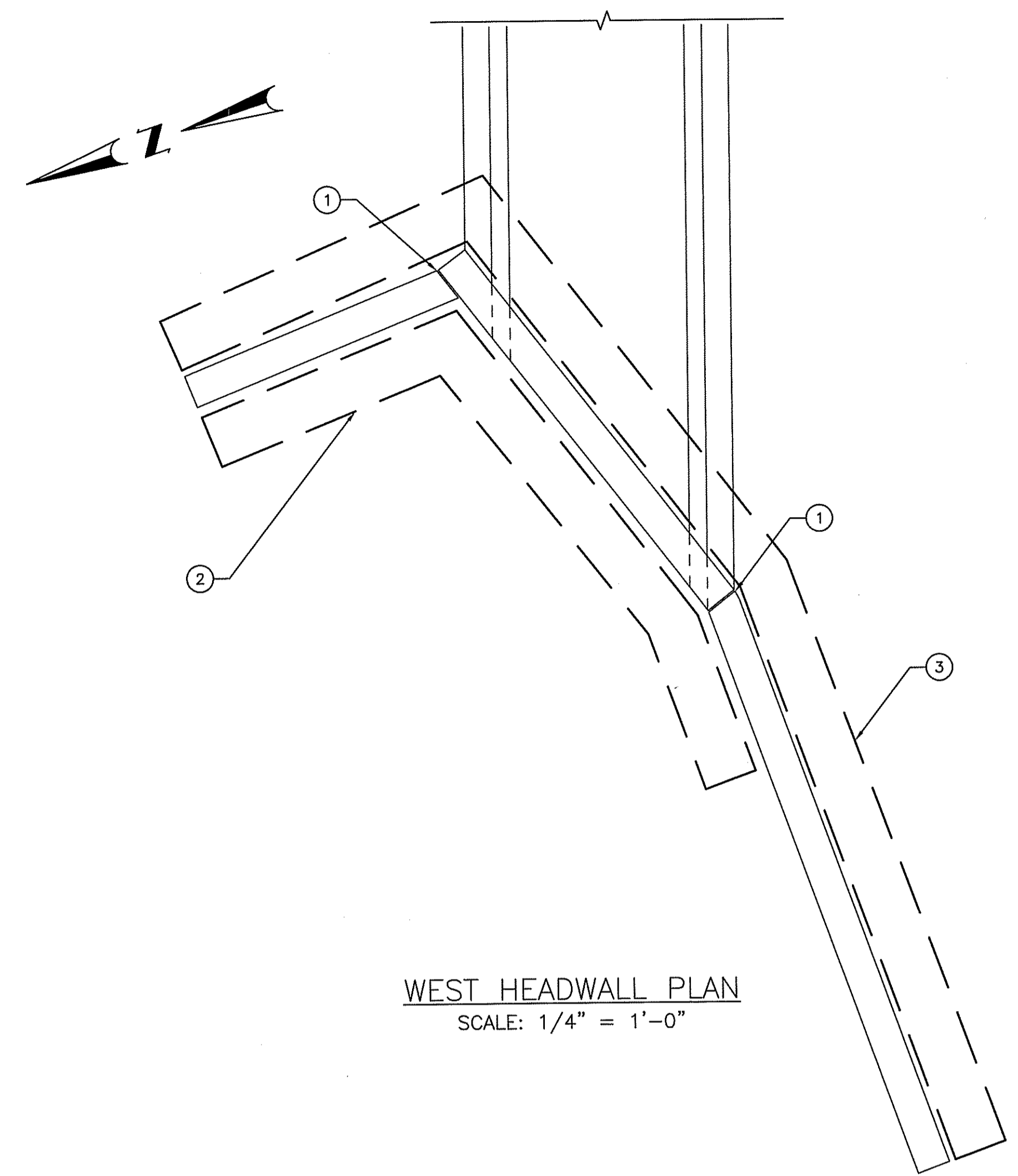


Contract Number 2018-CB-084
 Number of Sheet 1
 Total Sheets 8

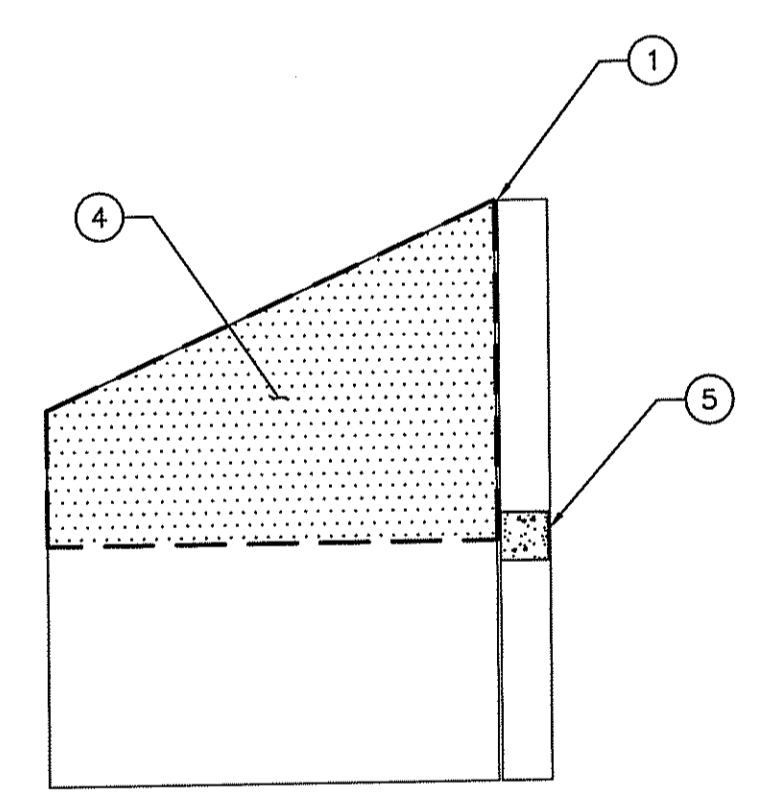


R.I. DEPARTMENT OF TRANSPORTATION	
APPROVED	
ADMINISTRATOR OF PROJECT MGMT	DATE
APPROVED	
CHIEF ENGINEER	DATE
APPROVED	
DIRECTOR	DATE
DEPARTMENT OF TRANSPORTATION FEDERAL HIGHWAY ADMINISTRATION	
APPROVED	
DIVISION ADMINISTRATOR	DATE

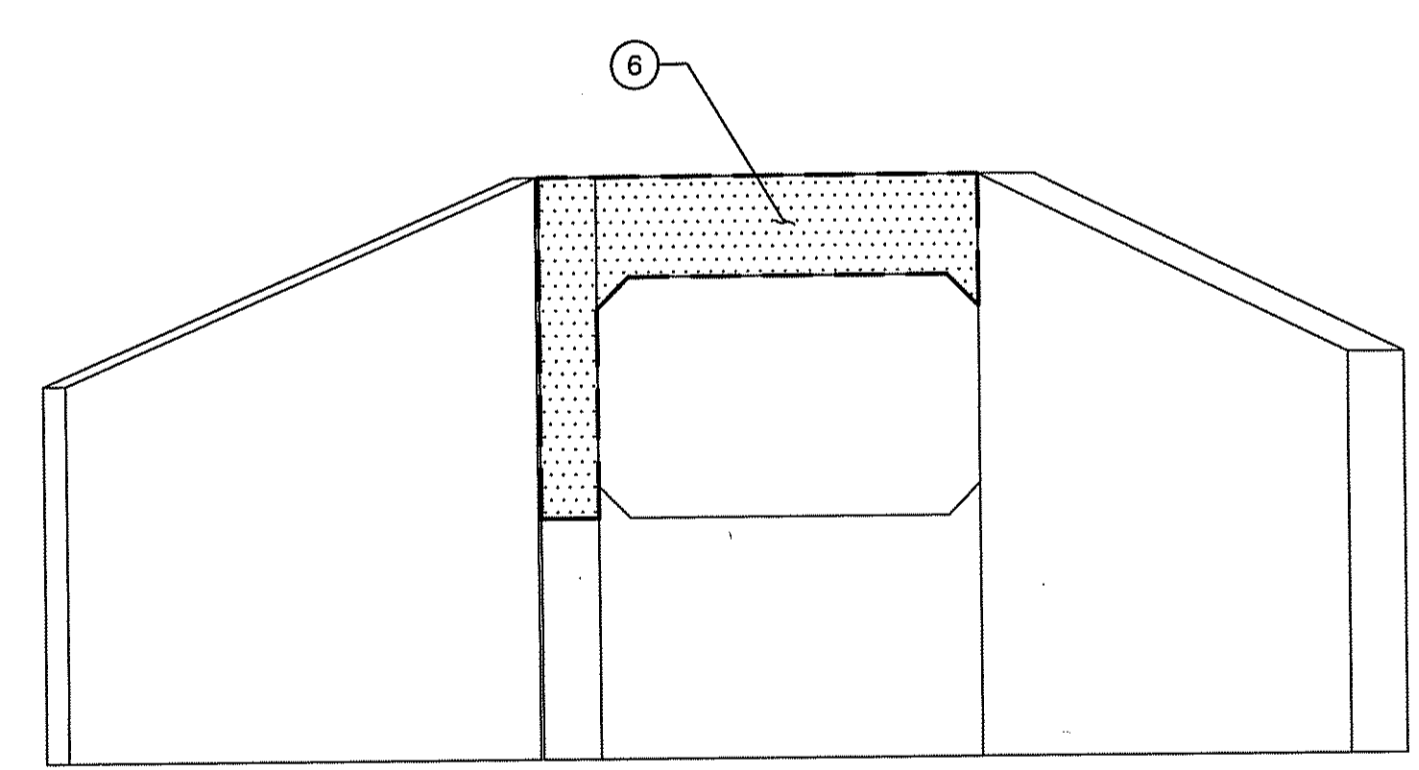
FED. ROAD DIV. NO.	STATE	FEDERAL AID PROJECT NO.	FISCAL YEAR	SHEET NO.	TOTAL SHEETS
	RI	BHO-0005(029)	2018	110	127



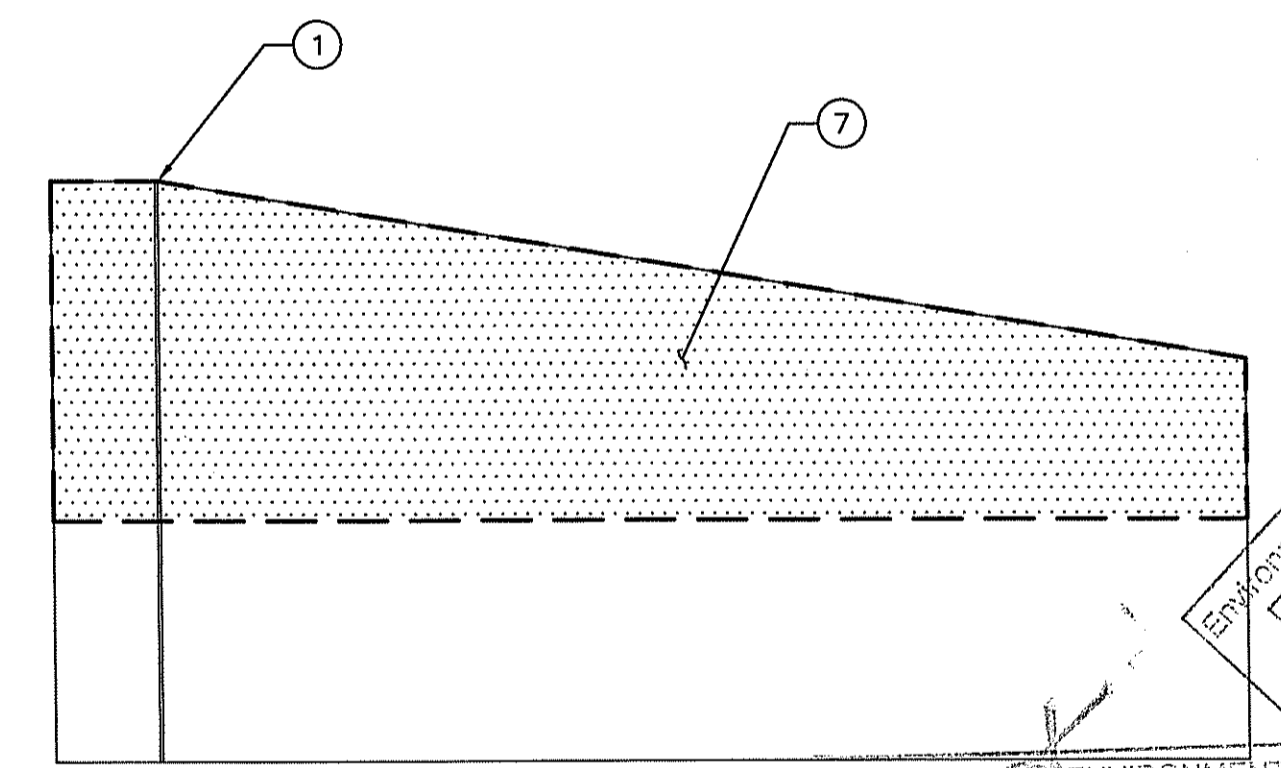
WEST HEADWALL PLAN
SCALE: 1/4" = 1'-0"



NORTHWEST WINGWALL ELEVATION
SCALE: 1/4" = 1'-0"



WEST HEADWALL ELEVATION
SCALE: 1/4" = 1'-0"



SOUTHWEST WINGWALL ELEVATION
SCALE: 1/4" = 1'-0"

REPAIR NOTES:

- REPAIR WINGWALL JOINT FILLER WITH INJECTED POLYURETHANE SYSTEM.
- EROSION - ADD RIPRAP ALONG FLOOR END AND WINGWALLS TO PREVENT UNDERMINING. (SEE SHEET 120 - RIPRAP EROSION REPAIR DETAILS).
- REMOVE VEGETATION AROUND HEADWALL - 100 SQ FT.
- AREA OF CONCRETE CLEANING AND PAINTING - 50 SQ FT.
- SPALL - 1'-0"W x 1'-0"H x 6"D CONC. REPAIR.
- AREA OF CONCRETE CLEANING AND PAINTING - 30 SQ FT.
- AREA OF CONCRETE CLEANING AND PAINTING - 85 SQ FT.

NOTES:

- SEE SHEET 34 FOR LIST OF ABBREVIATIONS.
- SEE SHEETS 4-5 FOR STANDARD NOTES.
- SEE SHEET 117 FOR CONCRETE REPAIR DETAILS.
- FOR CRACK REPAIRS, REFER TO RIDOT STANDARD SPECIFICATION SECTION 836 - STRUCTURAL CRACK REPAIR BY EPOXY-RESIN BASED ADHESIVE.
- EXISTING STRUCTURE INFORMATION IS APPROXIMATE AND BASED ON RECORD PLANS.
- REPAIR LIMITS SHOWN ARE APPROXIMATE AND SHALL BE VERIFIED BY THE CONTRACTOR PRIOR TO THE COMMENCEMENT OF DEMOLITION. THE CONTRACTOR SHALL PROVIDE THE ENGINEER THE ANTICIPATED REPAIR LIMITS.

LEGEND/ABBREVIATIONS

L	LENGTH	#	REPAIR NOTE REFERENCE
W	WIDTH	[Stippled Box]	PROPOSED CLEANING AND PAINTING
D	DEPTH	[Dotted Box]	PROPOSED CONCRETE REPAIR
H	HEIGHT	[Cross-hatched Box]	PROPOSED CRACK REPAIR
DIA	DIAMETER		
FW	FULL WIDTH		

CDM Smith
260 West Exchange Street, Suite 300
Providence, RI 02903
Tel: (401) 751-5360

REVISIONS		
NO.	DATE	BY

RHODE ISLAND
DEPARTMENT OF TRANSPORTATION

BRIDGE PRESERVATION GROUP 5
I-95 CORRIDOR BRIDGES

EAST GREENWICH, EXETER,
WEST GREENWICH, WARWICK RHODE ISLAND

WEST HEADWALL DETAILS

BRIDGE 080501 - I-95 SB OVER MASKERCHUGG RIVER

CHECKED BY JCF DATE 9/14/18 SCALE AS NOTED

DEPARTMENT OF ENVIRONMENTAL MANAGEMENT
OFFICE OF WATER RESOURCES
WETLANDS PROGRAM
APPROVED WITH CONDITIONS
AS SPECIFIED IN THE LETTER OF APPROVAL
NOV 21 2018 FILE # 18-021A
NO CHANGES ALLOWED WITHOUT PRIOR APPROVAL
APPROVED PLANS MUST BE AT CONSTRUCTION SITE

Environmental Management
SEP - 6 2018

