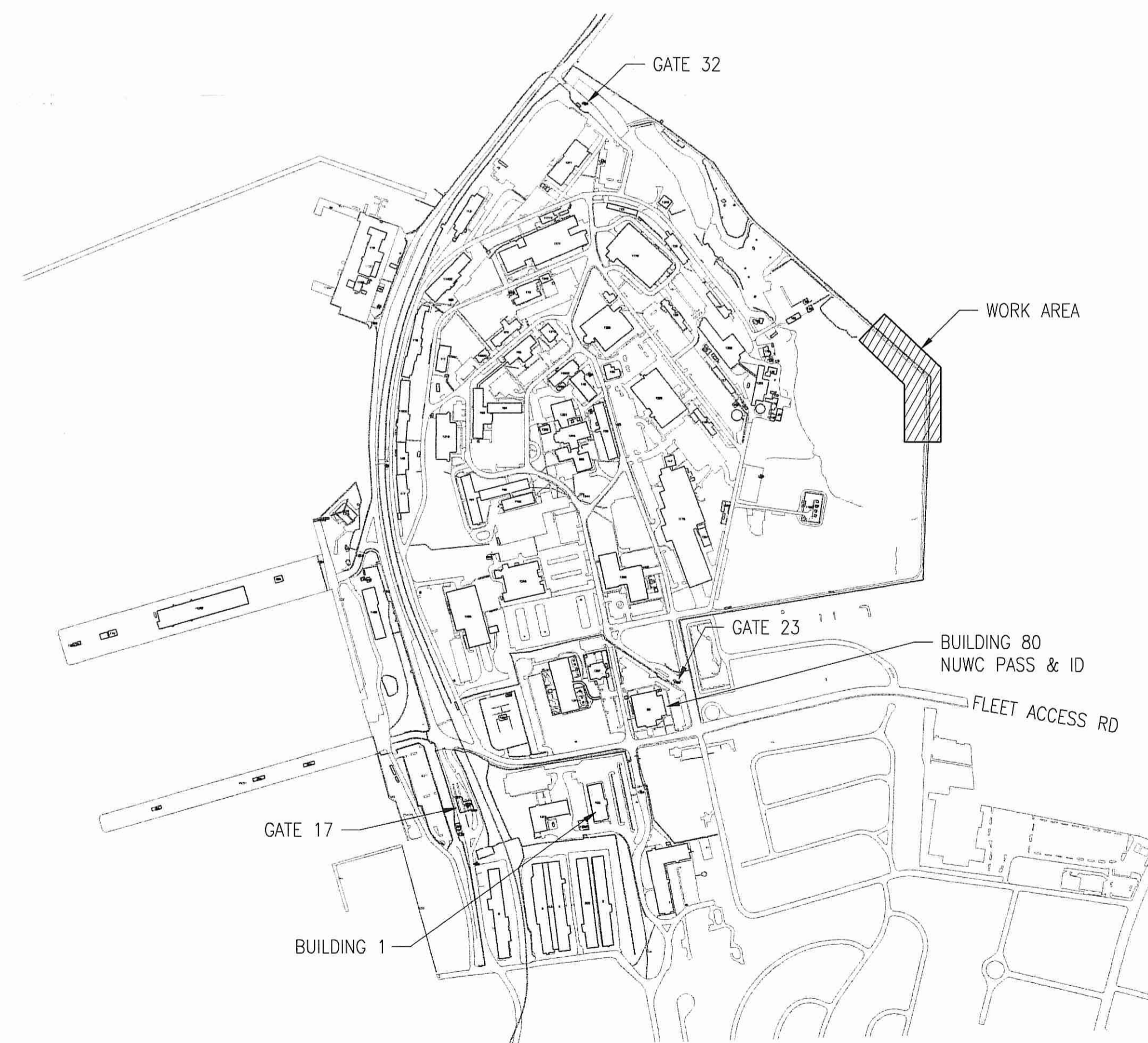


FIBER-OPTIC CABLE INSTALL NUWCDIVNPT

NAVAL UNDERSEA WARFARE CENTER, DIVISION NEWPORT
1176 HOWELL ST, NEWPORT, RI

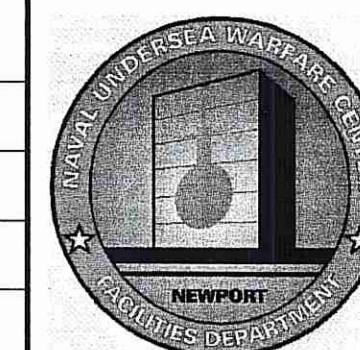
NOV 2018



NUWC LOCUS

Sheet List Table

Sheet Number	Sheet Description
C-001	TITLE SHEET
C-002	GENERAL NOTES
C-101	GENERAL SITE PLAN
C-102	ENLARGED SITE PLANS
C-501	DETAILS

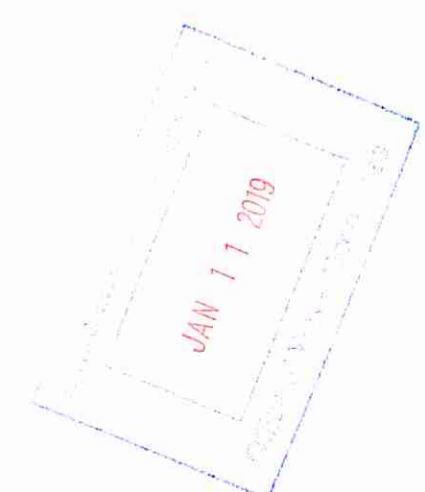


SYMBOL	DESCRIPTION	DATE	APPROVED

DATE	DATE	DATE	DATE
11/18	11/18		

DRAWN BY K. PROULX	CHECKED BY K. PROULX	DATE 11/18	DATE 11/18
DESIGNED BY K. PROULX	SATISFACTORY TO	DATE	DATE
	APPROVED	DATE	DATE

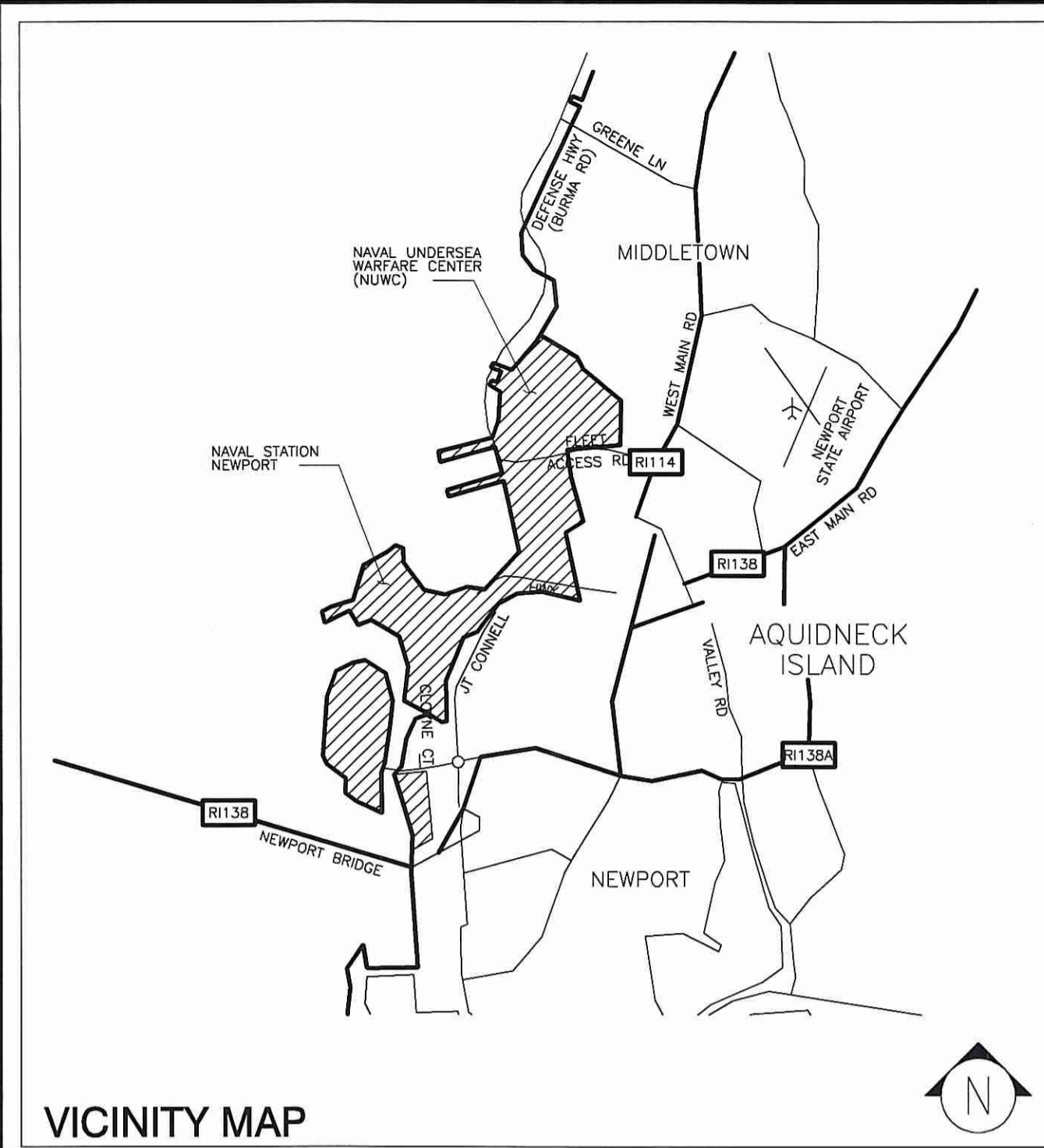
DEPARTMENT OF THE NAVY
NAVAL UNDERSEA WARFARE CENTER DIVISION
NEWPORT, RHODE ISLAND
FACILITIES BRANCH
TITLE
FIBER-OPTIC CABLE INSTALL
NUWCDIVNPT



DEPARTMENT OF ENVIRONMENTAL MANAGEMENT
OFFICE OF WATER RESOURCES
FRESHWATER WETLANDS PROGRAM
APPROVED WITH CONDITIONS
AS SPECIFIED IN THE LETTER OF APPROVAL
DATED FEB 8 2019 FILE # 19-0013
NO CHANGES ALLOWED WITHOUT PRIOR APPROVAL
APPROVED PLANS MUST BE AT CONSTRUCTION SITE

Charles A. Hallett

NUWC DRAWING NO. 18-053A
SIZE: ANSI D
SCALE: AS NOTED
NAVFAC DRAWING NO.
CONTRACT NO.
WORK REQ. NO. W2018-225-01
SHEET 1 OF 5
C-001



VICINITY MAP

GENERAL NOTES

- ALL WORK INCLUDED IN THIS CONTRACT SHALL CONFORM TO ALL STATE, NATIONAL AND OTHER CODES AND ORDINANCES WHICH APPLY TO THIS PROJECT.
- THE CONTRACTOR SHALL IDENTIFY AND FIELD VERIFY POINTS OF CONNECTION WHERE EXISTING AND NEW CONSTRUCTION MEET AND REPORT ANY DISCREPANCIES TO THE CONTRACTING OFFICER. THE CONTRACTOR SHALL PROCEED WITH THE WORK ONLY AFTER THE DISCREPANCIES HAVE BEEN RESOLVED BY THE GOVERNMENT.
- ALL COMPONENTS AND WORK ARE NEW AND SHALL BE PROVIDED BY THE CONTRACTOR UNLESS OTHERWISE NOTED.
- CONTRACTOR SHALL FIELD VERIFY ALL DIMENSIONS PRIOR TO ORDERING MATERIALS.
- ITEMS TO BE REMOVED, MODIFIED, OR ARE NEW ARE SHOWN IN THIS DRAWING PACKAGE AS DARK BLACK LINES. EXISTING FEATURES AND ITEMS TO REMAIN ARE SHOWN IN GRAY.
- CARE SHALL BE TAKEN BY THE CONTRACTOR TO PROTECT EXISTING SYSTEMS AND SURFACES TO REMAIN. THE CONTRACTOR SHALL RESTORE EXISTING TURFED AREAS AS WELL AS CONCRETE (PORTLAND CEMENT AND BITUMINOUS) DAMAGED BY HIS OPERATIONS TO A CONDITION ACCEPTABLE TO THE CONTRACTING OFFICER. ALL DAMAGE RESULTING FROM THE CONTRACTOR'S OPERATIONS SHALL BE REPAIRED OR REPLACED AT NO ADDITIONAL COST TO THE GOVERNMENT.
- AT THE END OF EACH WORKING DAY, THE CONSTRUCTION SITE SHALL BE LEFT IN A NEAT AND CLEAN MANNER.
- THE CONTRACTOR SHALL BE RESPONSIBLE FOR OBTAINING ALL PERMITS WHICH ARE REQUIRED FOR THE SATISFACTORY COMPLETION OF THE WORK.
- SUBMIT TO THE GOVERNMENT FOR APPROVAL SAFETY DATA SHEETS (SDS's) FOR ALL HAZARDOUS MATERIALS TO BE USED ON THE PROJECT PRIOR TO BRINGING ON SITE.
- THE CONTRACTOR SHALL DISPOSE OF AND/OR RECYCLE ANY CONSTRUCTION DEBRIS FROM THE PROJECT SITE AS REQUIRED BY THE STATE OF RHODE ISLAND. THE CONTRACTOR SHALL BE RESPONSIBLE FOR OBTAINING ANY DISPOSAL PERMITS WHICH ARE REQUIRED. CONSTRUCTION DEBRIS FROM THE PROJECT SITE SHALL BE DISPOSED OF IN A STATE APPROVED MANNER.

SECURITY

- DO NOT STORE MATERIALS OR EQUIPMENT WITHIN 10 FEET OF THE PERIMETER FENCE.
- GRAVEL ROAD IS USED BY PATROLLING SECURITY. CONDUCT OPERATIONS SO AS TO MAINTAIN CONTINUOUS ASSESS BY PATROLLING VEHICLES.

ENVIRONMENTAL

- NAVAL STATION NEWPORT (FORMERLY NAVAL EDUCATION & TRAINING CENTER) IS A NATIONAL PRIORITIES LIST (NPL) SITE FOR VARIOUS AREAS OF CONTAMINATION (ASOC). THESE ASOC ARE BEING STUDIED AND CLEANED UP UNDER THE NAVY'S INSTALLATION RESTORATION PROGRAM IN ACCORDANCE WITH THE COMPREHENSIVE ENVIRONMENTAL RESPONSE COMPENSATION AND LIABILITIES ACT (CERCLA). ASOC ARE LOCATED NEXT TO AND ON THE PROJECT SITE. PERSONNEL THAT DISTURB OR CONTACT SOILS IN ASOC MUST COMPLETE 40 HOURS OF TRAINING AND BE HAZARDOUS WASTE OPERATIONS AND EMERGENCY (HAZWOPER) CERTIFIED IN ACCORDANCE WITH OSHA'S 29 CFR 1910.120 HAZWOPER REGULATIONS. IN ADDITION, AN OFFSITE SITE RULE FORM MUST BE SUBMITTED TO THE USEPA FOR APPROVAL TO REMOVE SOILS FROM THE PROJECT SITE FOR OFFSITE DISPOSAL.

SEDIMENT & EROSION CONTROL

- PROVIDE A CONTINUOUS SILT FENCE, 30-36 INCHES TALL, AS INDICATED. INSTALL FENCE IN A 6-INCH BY 6-INCH (MINIMUM) TRENCH AND BACKFILL WITH COMPACTED SOIL.
- FILTER FABRIC MUST BE HEAVY-DUTY PLASTIC MESH SUITABLE FOR EROSION CONTROL APPLICATIONS AND SHALL BE ONE OF THOSE INCLUDED ON THE DEPARTMENT'S APPROVED MATERIALS LIST. STAPLE FABRIC TO EACH POST. WHEN JOINTS ARE NECESSARY, SPLICE FABRIC WITH 6-INCH OVERLAP AND SECURELY SEAL.
- PROVIDE WOOD POSTS, 8 FEET ON CENTER (MAXIMUM), ANCHORING THE SILT FENCE MUST BE OAK, 2-INCH BY 2-INCH IN SECTION, AND AT LEAST 4.5 FEET IN LENGTH. FOR PREFABRICATED SILT FENCE, 1-INCH BY 1-INCH WOOD POSTS WILL BE PERMITTED.
- CLEAN AND REMOVE SEDIMENT FROM SILT FENCE WHEN DIRECTED BY THE ENGINEER, AFTER A RAINSTORM, AND WHEN SEDIMENT DEPOSITS REACH 6 INCHES DEEP.
- DURING ALL SITE/EARTH WORK, DUST SUPPRESSION (I.E. WATERING) MUST BE EMPLOYED.

EXCAVATION AND FILL

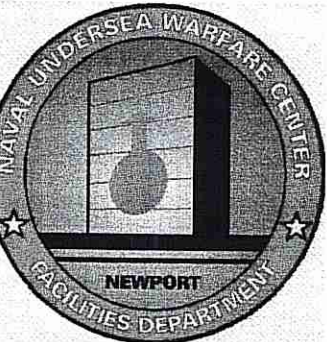
- CONDUCT OPERATIONS IN ACCORDANCE WITH THE NAVAL STATION SOIL MANAGEMENT PLAN.
- THE SOILS AT NUWCDIVNPT HAVE NATURALLY OCCURRING HIGH ARSENIC LEVELS. PRIOR TO EXCAVATION, HAVE AN ENVIRONMENTAL PROFESSIONAL TEST THE SOILS TO DETERMINE THE APPROPRIATE DISPOSAL AND/OR MANAGEMENT OPTIONS.
- UTILITIES SHOWN IN THIS PACKAGE HAVE BEEN ASSEMBLED FROM GOVERNMENT RECORDS AND THEIR LOCATION IS APPROXIMATE ONLY. THE GOVERNMENT DOES NOT GUARANTEE THAT ALL UTILITIES SHOWN ARE DEPICTED IN THE CORRECT LOCATION NOR DOES THE GOVERNMENT GUARANTEE THAT ALL EXISTING UTILITIES ARE SHOWN HEREIN.
- BEFORE ANY EXCAVATION, CONTACT "DIG SAFE" AT 1-888-DIG-SAFE (1-888-344-7233) AND HIRE A THIRD PARTY, INDEPENDENT, PRIVATE UTILITY LOCATING COMPANY TO POSITIVELY IDENTIFY UNDERGROUND UTILITIES IN THE WORK AREA. COORDINATE THESE SERVICES WITH THE NAVAL STATION UTILITY DEPARTMENT - POINT OF CONTACT: FRANCIS FURTADO (401-841-1355). ANY DAMAGE AS WELL AS THE COSTS OF SUCH DAMAGE, TO EXISTING UTILITIES OR STRUCTURES SHALL BE THE CONTRACTOR'S RESPONSIBILITY.
- PHYSICALLY VERIFY UNDERGROUND UTILITY LOCATIONS, INCLUDING UTILITY DEPTH, BY HAND DIGGING USING WOOD OR FIBERGLASS HANDLED TOOLS WHEN ANY ADJACENT CONSTRUCTION WORK IS EXPECTED TO COME WITHIN 3 FEET OF THE UNDERGROUND SYSTEM.
- ALL UNSUITABLE MATERIAL SHALL BE EXCAVATED TO A MINIMUM DEPTH OF 6 INCHES BELOW THE DESIGN CABLE ELEVATION OR AS DIRECTED BY THE ENGINEER. THE WIDTH OF THE TRENCH SHALL EXTEND 1 FOOT BEYOND EACH SIDE OF THE CABLE.
- BACKFILL TRENCHES IN LIFTS NOT EXCEEDING 6 INCHES.
- UNLESS OTHERWISE NOTED, ALL MATERIAL AND METHODS USED IN CONSTRUCTION SHALL CONFORM TO THE LATEST EDITION OF THE "RHODE ISLAND DEPARTMENT OF TRANSPORTATION STANDARD SPECIFICATIONS FOR ROAD AND BRIDGE CONSTRUCTION" (RIDOT STANDARD SPECS).
- FILL MATERIAL MUST MEET THE STATE OF RHODE ISLAND DEPARTMENT OF ENVIRONMENTAL MANAGEMENT'S METHOD 1 RESIDENTIAL DIRECT EXPOSURE CRITERIA OR BE DESIGNATED BY AN ENVIRONMENTAL PROFESSIONAL AS NON-JURISDICTIONAL UNDER THE REMEDIATION REGULATIONS.
- EXCAVATIONS MAY NOT BE LEFT OPEN. AT THE COMPLETION OF EACH WORK DAY, BACKFILL TRENCH(S) TO FINISHED GRADE WITH APPROPRIATE BACKFILL. TEMPORARY TRENCH COVERS/PLATES MAY NOT BE USED.
- IN THE EVENT THAT AN UNEXPECTED CONDITION (SUCH AS HAZARDOUS CONTAMINATION OR UNEXPECTED UTILITY) ARISES, STOP WORK IMMEDIATELY AND REPORT THE CONDITION TO THE CONTRACTING OFFICER. DO NOT CONTINUE WORK IN THAT AREA UNTIL DIRECTED BY THE CONTRACTING OFFICER.

FIBER-OPTIC CABLE

- PROVIDE SINGLE-MODE, 8/125-UM, 0.10 APERTURE 1310 NM FIBER OPTIC CABLE IN ACCORDANCE WITH TIA-492CAAA. PROVIDE 12 OPTICAL FIBERS. FIBER OPTIC CABLE SHALL BE SPECIFICALLY DESIGNED FOR OUTSIDE USE WITH LOOSE BUFFER CONSTRUCTION. PROVIDE FIBER OPTIC COLOR CODE IN ACCORDANCE WITH TIA/EIA-598.
- CABLE MUST BE CONTINUOUS THROUGH THE ENTIRE SITE (APPROXIMATELY 1100 FEET REQUIRED). DO NOT INSTALL USING A CABLE PLOW.
- BENDS IN TRENCHES MUST HAVE A MINIMUM RADIUS OF 36 INCHES.
- DO NOT UNREEL AND PULL CABLES INTO THE TRENCH FROM ONE END. CABLE MAY BE UNREELLED ON GRADE AND LIFTED INTO POSITION.
- PROVIDE 3 INCH WIDE (MINIMUM) POLYETHYLENE PLASTIC WARNING TAPE MANUFACTURED SPECIFICALLY FOR WARNING AND IDENTIFICATION OF BURIED UTILITY LINES. COLOR MUST BE ORANGE WITH "CAUTION BURIED FIBER OPTIC CABLE BELOW" IMPRINTED IN BOLD BLACK LETTERS CONTINUOUSLY OVER THE ENTIRE TAPE LENGTH.

SURVEY AND TESTING NOTES

- PRIOR TO BACKFILLING TRENCH, SURVEY THE BOTTOM ELEVATION AND PERFORM IN-SITU DENSITY AND WATER CONTENT TESTING EVERY 20 FT.
- WITH EACH 1 FT LIFT, AND 20 FT ON CENTER, RECORD ELEVATION, DENSITY, AND WATER CONTENT.
- RECORD FIBER-OPTIC CABLE ELEVATION EVERY 20 FT (MIN. 3 TIMES PER BACKFILL MATERIAL).
- SURVEY TOP OF TRENCH EVERY 20 FT.

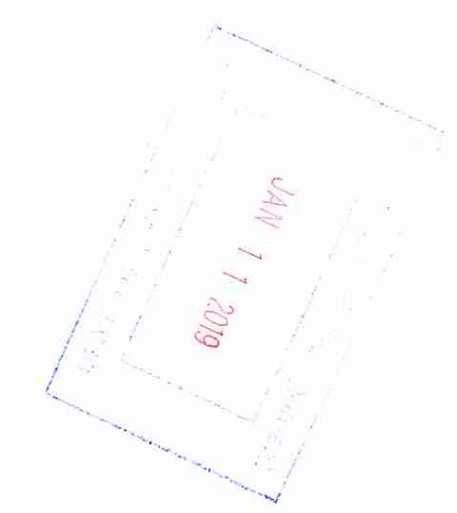


REV	DATE	DESCRIPTION	BY	APPR.

SEAL

DATE	11/18
DESIGNED BY	K. PROULX
CHECKED BY	K. PROULX
SATISFACTORY TO	
APPROVED	

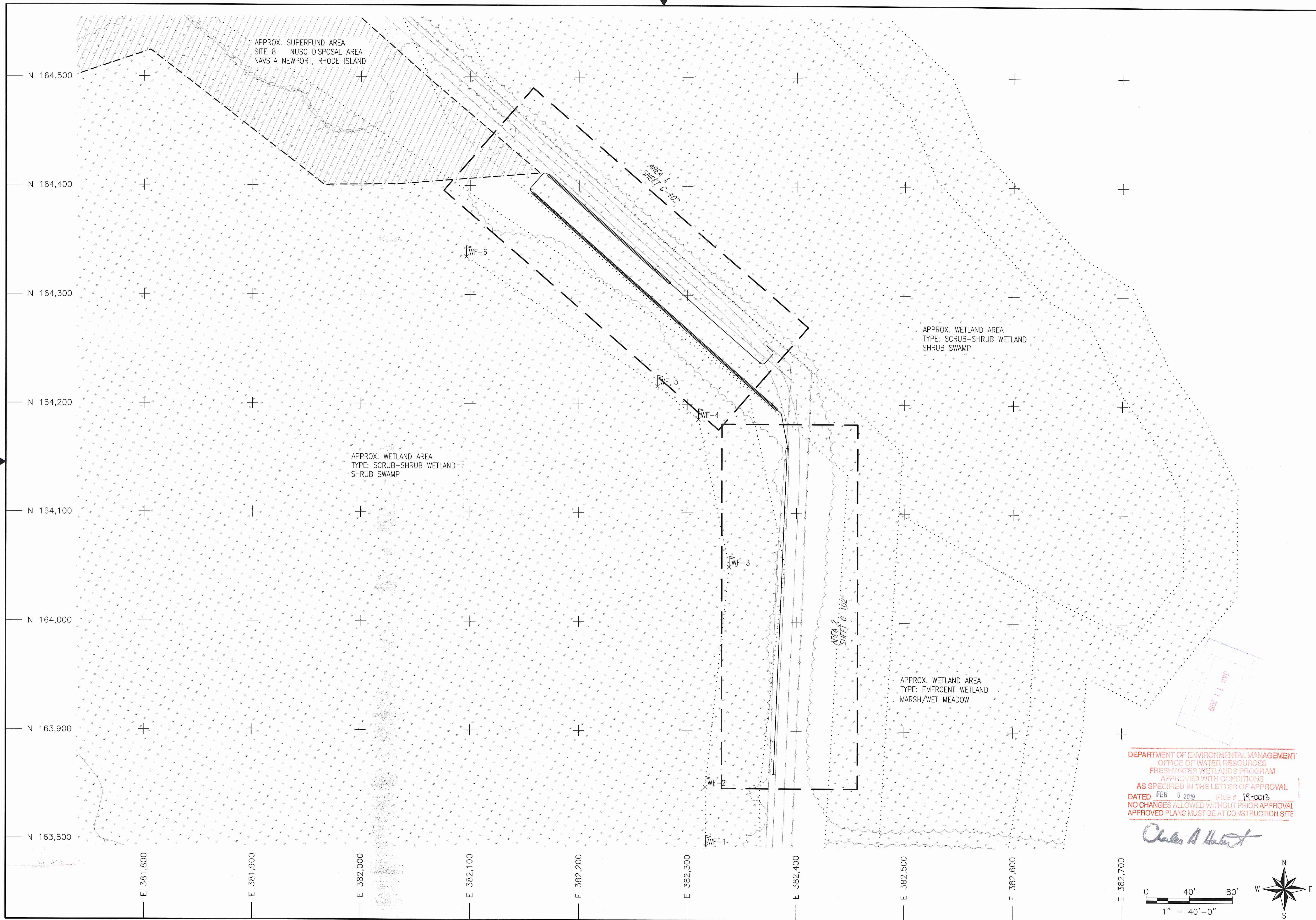
DEPARTMENT OF THE NAVY
 NAVAL UNDERSEA WARFARE CENTER DIVISION
 NEWPORT, RHODE ISLAND
 NAVAL FACILITIES ENGINEERING COMMAND
 FACILITIES BRANCH
FIBER-OPTIC CABLE INSTALL
 NUWCDIVNPT
 GENERAL NOTES



DEPARTMENT OF ENVIRONMENTAL MANAGEMENT
 OFFICE OF WATER RESOURCES
 FRESHWATER WETLANDS PROGRAM
 APPROVED WITH CONDITIONS
 AS SPECIFIED IN THE LETTER OF APPROVAL
 DATED FEB 8 2019 FILE # 19-0013
 NO CHANGES ALLOWED WITHOUT PRIOR APPROVAL
 APPROVED PLANS MUST BE AT CONSTRUCTION SITE

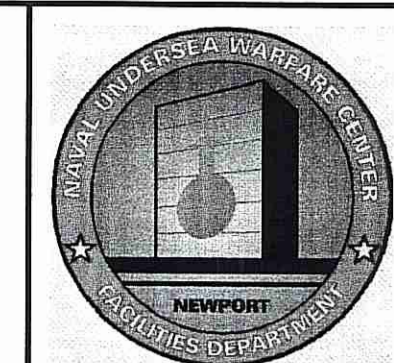
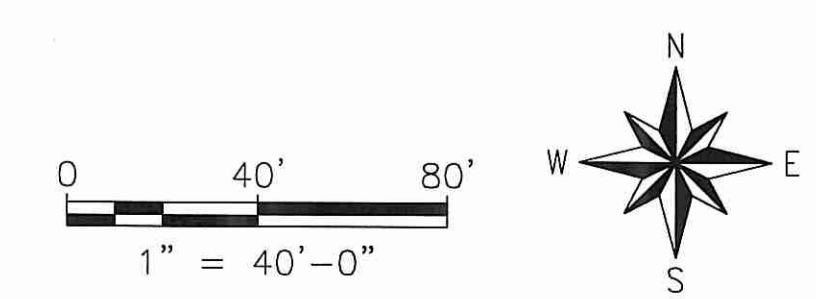
Charles H. Haber

NUWC DRAWING NO.	18-053A
SIZE:	ANSI D
SCALE:	AS NOTED
NAVAC DRAWING NO.	
CONTRACT NO.	
WORK REG. NO.	W2018-225-01
SHEET	2 OF 5
	C-002



DEPARTMENT OF ENVIRONMENTAL MANAGEMENT
 OFFICE OF WATER RESOURCES
 FRESHWATER WETLANDS PROGRAM
 APPROVED WITH CONDITIONS
 AS SPECIFIED IN THE LETTER OF APPROVAL
 DATED FEB 8 2019 FILE # 19-0013
 NO CHANGES ALLOWED WITHOUT PRIOR APPROVAL
 APPROVED PLANS MUST BE AT CONSTRUCTION SITE

Charles A. Haber



SYMBOL	DESCRIPTION	DATE	APPROVED

SEAL

DATE	DESIGNED BY	DATE	CHECKED BY	DATE	SATISFACTORY TO	DATE	APPROVED
11/18	K. PROULX	11/18	K. PROULX	11/18			

DEPARTMENT OF THE NAVY
 NAVAL FACILITIES ENGINEERING COMMAND
 NAVAL UNDERSEA WARFARE CENTER DIVISION
 FACILITIES BRANCH
 FIBER-OPTIC CABLE INSTALL
 NUWCDIVNPT
 GENERAL SITE PLAN

NUWC DRAWING NO.	18-053A
SIZE:	ANSI D
SCALE:	AS NOTED
NAVIFAC DRAWING NO.	
CONTRACT NO.	
WORK REQ. NO.	W2018-225-01
SHEET	3 OF 5
	C-101

