

Plan Set

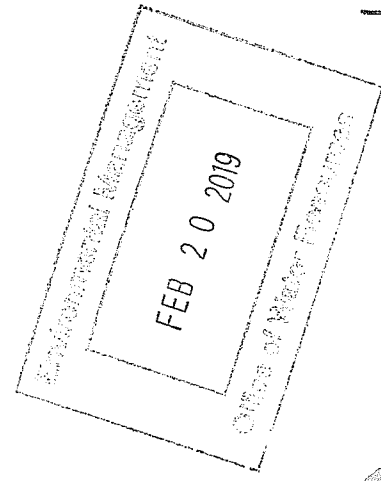
Issued for: RIDEM Request for Preliminary Determination
 Date Issued: February 17, 2019

Sheet Index

Number	Drawing Title	Latest Issue
1	Cover	02/17/2019
2	Plan	02/17/2019

DEPARTMENT OF ENVIRONMENTAL MANAGEMENT
 OFFICE OF WATER RESOURCES
 FRESHWATER WETLANDS PROGRAM
 APPROVED WITH CONDITIONS
 AS SPECIFIED IN THE LETTER OF APPROVAL
 DATED APR 5 2019 FILE # 19-0046
 NO CHANGES ALLOWED WITHOUT PRIOR APPROVAL
 APPROVED PLANS MUST BE AT CONSTRUCTION SITE

Julius A. [Signature]

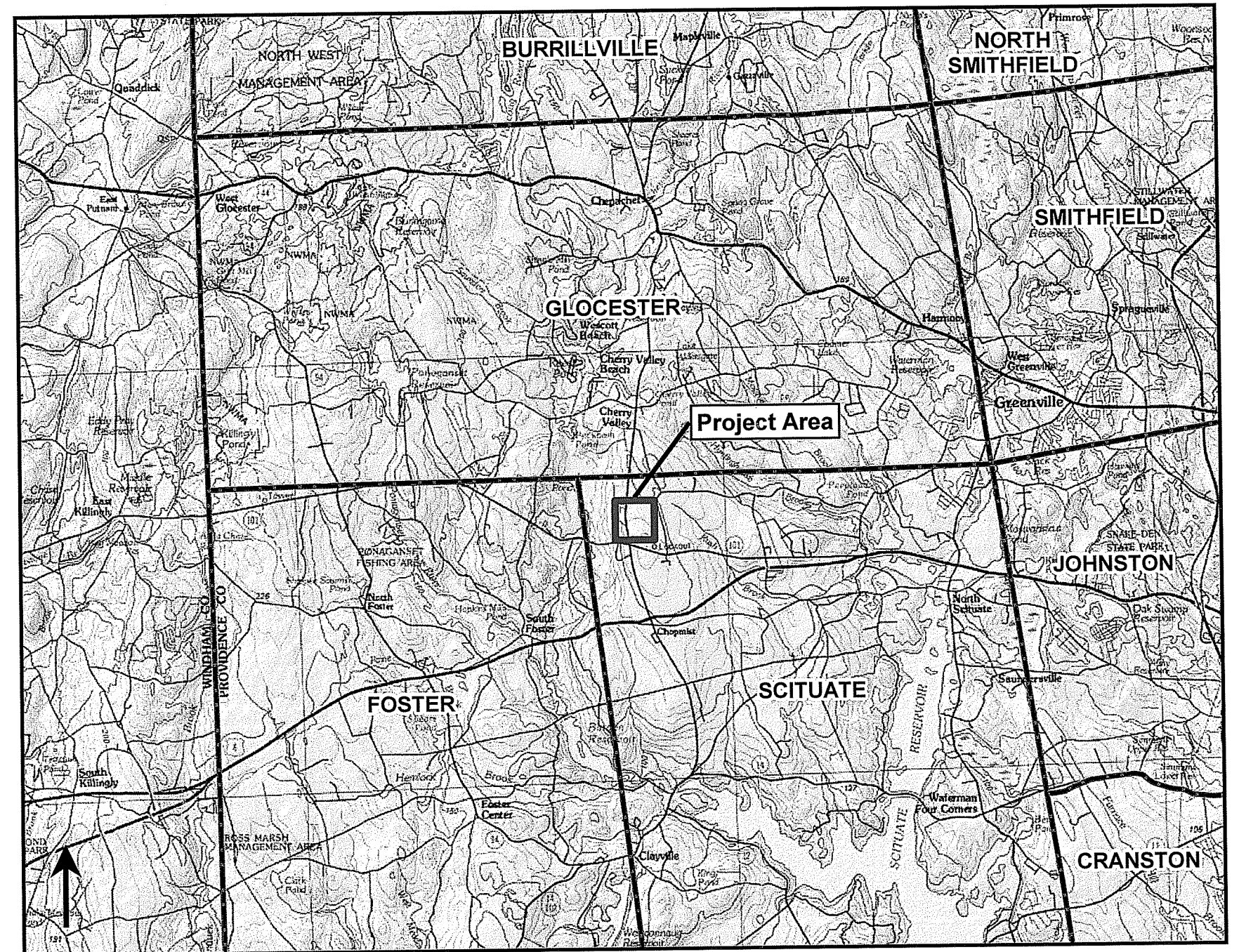


nationalgrid

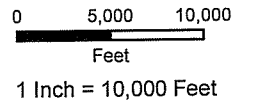


Chopmist Maintenance Facility Perimeter Fence Project

900 Chopmist Hill Road, Scituate, RI
 Assessor's Plat 25 Lot 9



Project Location Map
 Sheet 1

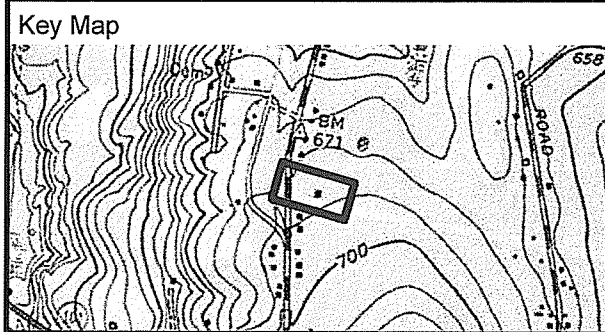




Environmental Management
FEB 20 2019
 Office of Water Resources

DEPARTMENT OF ENVIRONMENTAL MANAGEMENT
 OFFICE OF WATER RESOURCES
 FRESHWATER WETLANDS PROGRAM
 APPROVED WITH CONDITIONS
 AS SPECIFIED IN THE LETTER OF APPROVAL
 DATED **APR 5 2019** FILE # **19-0046**
 NO CHANGES ALLOWED WITHOUT PRIOR APPROVAL
 APPROVED PLANS MUST BE AT CONSTRUCTION SITE

John A. [Signature]



Legend	
--- (dashed line)	Approximate Site Property Line
■ (square)	Culvert
△ (triangle)	Wetland Flag
— (solid line)	Delineated Wetland Edge
— (thick solid line)	50' Perimeter Wetland
■ (shaded square)	ASSF
■ (light shaded square)	Wetland
-x-x-	Recently Installed Fence
-x-x-	Existing Fence
--- (dashed line)	Limit of Disturbance

Source: Wetland boundaries were field delineated and surveyed by VHB in 2018.

Chopmist Maintenance Facility
Perimeter Fence Project

Site Plan
900 Chopmist Hill Road, Scituate, RI
Assessor's Plat 25 Lot 9
 Sheet 2

Date: 2/17/2019

Source:

0 25 50
Feet

nationalgrid
 vhb