

DEPARTMENT OF ENVIRONMENTAL MANAGEMENT  
 OFFICE OF WATER RESOURCES  
 FRESHWATER WETLANDS PROGRAM  
 APPROVED WITH CONDITIONS

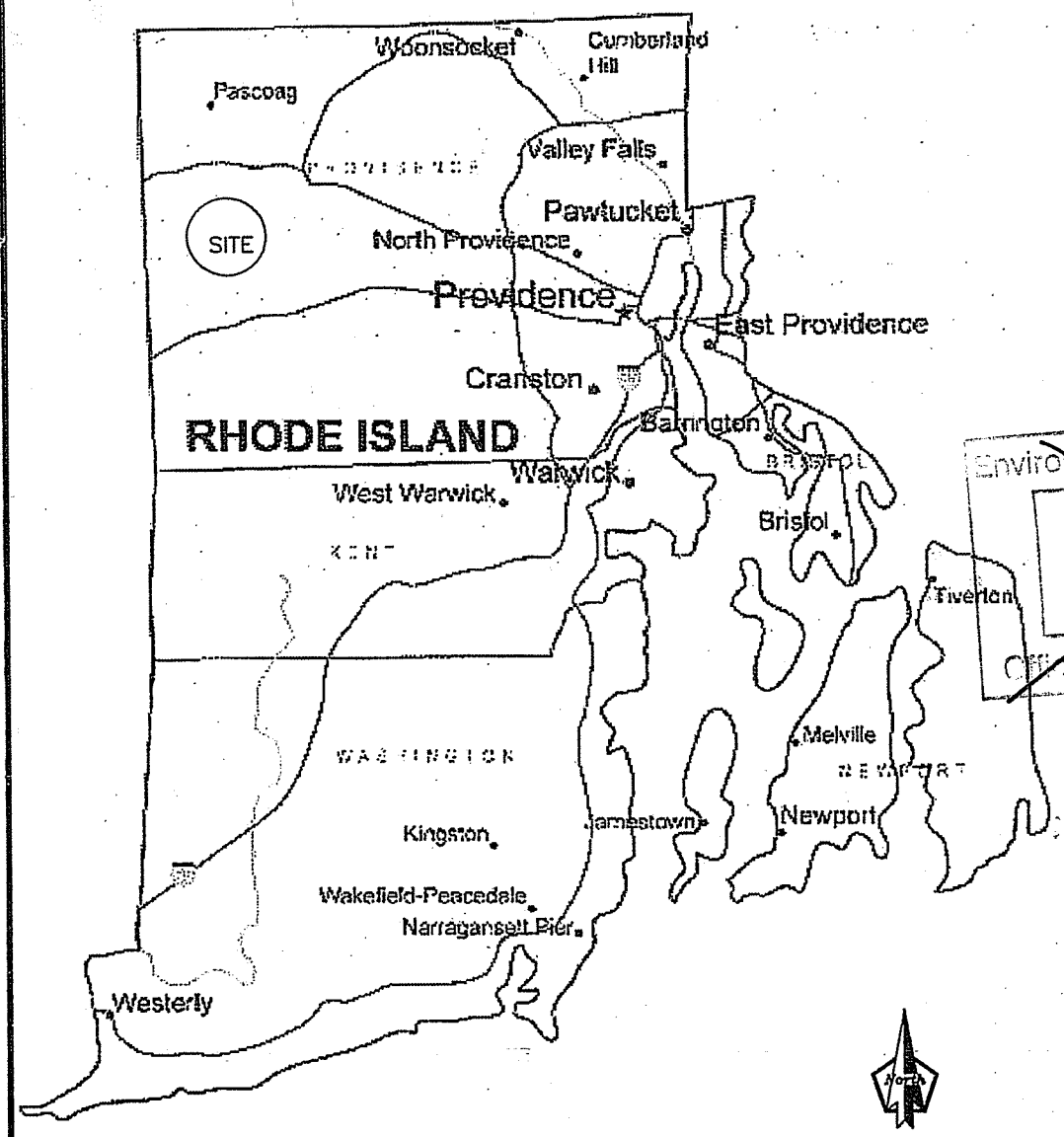
AS SPECIFIED IN THE LETTER OF APPROVAL  
 DATED MAY 6 2019 FILE # 19-0110  
 NO CHANGES ALLOWED WITHOUT PRIOR APPROVAL  
 APPROVED PLANS MUST BE AT CONSTRUCTION SITE

*Charles A. Hulet*

PLANS FOR THE CONSTRUCTION OF  
**PRACTICES**  
 FOR  
**WOONSOCKET SPORTSMAN CLUB**  
**CHEPACHET, RHODE ISLAND**

PREPARED BY  
**U.S. DEPARTMENT OF AGRICULTURE**  
**NATURAL RESOURCES**  
**CONSERVATION SERVICE**

Date 12 2015  
 Designed JL  
 Drawn JL RL  
 Checked *A. Gulesa*  
 Approved *A. Gulesa*



~~Environmental Management  
 APR 5 2019  
 Office of Water Resources~~

LOCATION MAP  
 NOT TO SCALE

Environmental Management  
 APR 8 2019  
 Office of Water Resources

**THE CONTRACTOR IS RESPONSIBLE FOR VERIFYING EXISTENCE AND LOCATION OF UTILITIES AND IS LIABLE FOR ANY DAMAGE BY CONSTRUCTION ACTIVITY. UTILITY LOCATIONS ARE APPROXIMATE. ADDITIONAL UTILITIES MAY EXIST EVEN THOUGH NOT SHOWN.**

**DIG SAFE**  
 1-888-344-7233

PRACTICE STANDARD	LIMIT	JOB CLASS
432, Dry Hydrant		I

MATERIALS LIST		
ITEM	QUANTITY	UNITS
6" DIA. SCH 40 PVC PIPE	41	LIN FT
EXCAVATION	6	CU YDS
EARTH FILL	16	CU YDS
STAKED HAYBALES AND FILTER FENCE	16	LIN FT
DRY HYDRANT HEAD	1	EA
END CAP	1	EA
SUPPORT RODS	6	EA
4"X4"X8' PRESSURE TREATED POSTS	2	EA
SEEDING AND MULCHING	60	SQ FT
90 DEGREE ELBOW	2	EA
PANHEAD INTAKE STRAINER	1	EA
DRY HYDRANT LOCATION SIGN	1	EA

INDEX OF DRAWINGS	
PAGE #	CONTENT
1	TITLE PAGE
2	PLAN VIEW
3	PROFILE AND DETAIL SHEET

GENERAL NOTES

1. THE CONTRACTOR IS RESPONSIBLE FOR THE NOTIFICATION OF ALL UTILITY COMPANIES AFFECTED BY THIS PROJECT. THE CONTRACTOR IS RESPONSIBLE FOR DETERMINING THE EXACT PHYSICAL LOCATIONS OF ALL UTILITIES AFFECTED THIS PROJECT.
2. THE CONTRACTOR IS RESPONSIBLE FOR COMPLIANCE WITH ALL ORDINANCES AND LAWS PERTAINING TO THE INSTALLATION OF THIS PROJECT.
3. ELEVATIONS SHOWN IN THE DRAWINGS ARE BASED ON AN ASSUMED VERTICAL DATUM.
4. ALL DISTANCES/STATIONING SHOWN IN THE DRAWINGS IS MEASURED HORIZONTAL DISTANCE AND IS APPROXIMATE.
5. ALL WORK SHOWN IN THESE DRAWINGS SHALL BE STAKED FOR LAYOUT PRIOR TO CONSTRUCTION.

THE LANDOWNER OR CONTRACTOR MUST CONTACT NRCS TO SET UP A PRE-CONSTRUCTION MEETING PRIOR TO THE START OF ANY CONSTRUCTION

COOPERATOR'S REVIEW AND APPROVAL STATEMENT

I HAVE REVIEWED THE PLANS AND SPECIFICATIONS AND AGREE TO COMPLETE THE WORK ACCORDINGLY. MODIFICATION OF THESE PLANS AND SPECIFICATIONS MUST BE APPROVED BY THE NATURAL RESOURCES CONSERVATION SERVICE BEFORE INSTALLATION. FAILURE TO MEET THESE PLANS AND SPECIFICATIONS MAY JEOPARDIZE MY STATE OR FEDERAL COST SHARE FUNDING.

I AM RESPONSIBLE FOR CLEARLY LOCATING AND MARKING ALL PRIVATE UTILITIES AND TILE LINES WITHIN THE WORK AREA. FAILURE TO LOCATE PRIVATE UTILITIES AND TILE LINES MAY INCREASE MY CONSTRUCTION COSTS. I AM RESPONSIBLE FOR SECURING ALL NECESSARY PERMITS AND COMPLETING THE WORK IN ACCORDANCE WITH ALL LOCAL, STATE, AND FEDERAL LAWS. I AM RESPONSIBLE FOR ALL NEGOTIATIONS AND AGREEMENTS WITH THE CONTRACTOR(S). I WILL BE AVAILABLE DURING CONSTRUCTION TO DISCUSS POTENTIAL MODIFICATIONS AND CONDUCT NECESSARY NEGOTIATIONS WITH THE CONTRACTOR(S).

COOPERATOR'S SIGNATURE \_\_\_\_\_ DATE \_\_\_\_\_

REVISIONS			
PAGE	DESCRIPTION	BY	DATE

WOONSOCKET SPORTSMAN CLUB  
 TITLE PAGE  
 CONTRACT NUMBER: EQUIP 741106140HS  
 Providence County, RI

File No.  
 Drawing No. NRI-02-16  
 Sheet 1 of 3



1. Place erosion controls as shown.
2. Build 6" pipe with Strainer, elbows and Head assembly.
3. Excavate for placement (6cy)
4. Place pipe and assembly.
5. Place Bracing within the water at strainer and along last 4' of pipe.
6. Backfill with 24" of 3/4" stone around pipe at embankment. Bedding Material
7. Finish Backfill with on site material, Loam and seed.
8. Place Bollards for protection and holding fire connection.
9. Erosion Controls to remain until such time as seed takes hold and is 3" in height.

NOTE: PROPOSED ACCESS SHALL BE MAINTAINED TO PROVIDE VEHICLE ACCESS TO AND FROM THE DRY HYDRANT FOR FIRE TRUCK AND PUMPER UNITS. PROPOSED ACCESS SHALL HAVE AN ALL WEATHER SURFACE, BE WELL MAINTAINED AND HAVE A MIN. WIDTH OF 12'.

50 FT REGULATED AREA

WETLAND EDGE

3 FT HEIGHT PRESSURE TREATED POST (BESIDE HYDRANT) WITH SIGNAGE  
Excavation material  
APPROXIMATE SEEDING AND MULCHING AREA  
EROSION CONTROL MOVE AS NEEDED FOR ACCESS

Erosion Control

PROPOSED MAINTAINED ACCESS

DRIVE

PROPOSED DRY HYDRANT

2 FT. DIAMETER TREE

Limit of Disturbance

POND

TBM. 2055 TOP SPILLWAY SILL 346.42

STA. 101 PK IN HUB

TBM 200 PK IN 4X4

POST

1' CONTOUR LINES

PAVILION

356

355

354

353

352

351

350

349

348

347

346

345

344

343

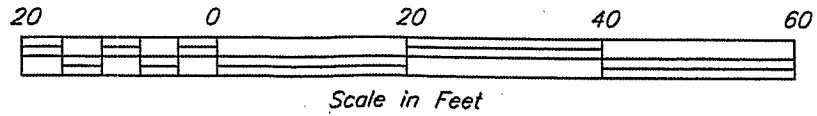
342

341

DEPARTMENT OF ENVIRONMENTAL MANAGEMENT  
OFFICE OF WATER RESOURCES  
FRESHWATER WETLANDS PROGRAM  
APPROVED WITH CONDITIONS  
AS SPECIFIED IN THE LETTER OF APPROVAL  
DATED MAY 6 2019 FILE # 19-0110  
NO CHANGES ALLOWED WITHOUT PRIOR APPROVAL  
APPROVED PLANS MUST BE AT CONSTRUCTION SITE

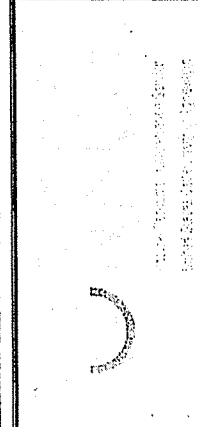
*Charles A. Hester*

Environmental Management  
**APR 8 2019**  
Office of Water Resources



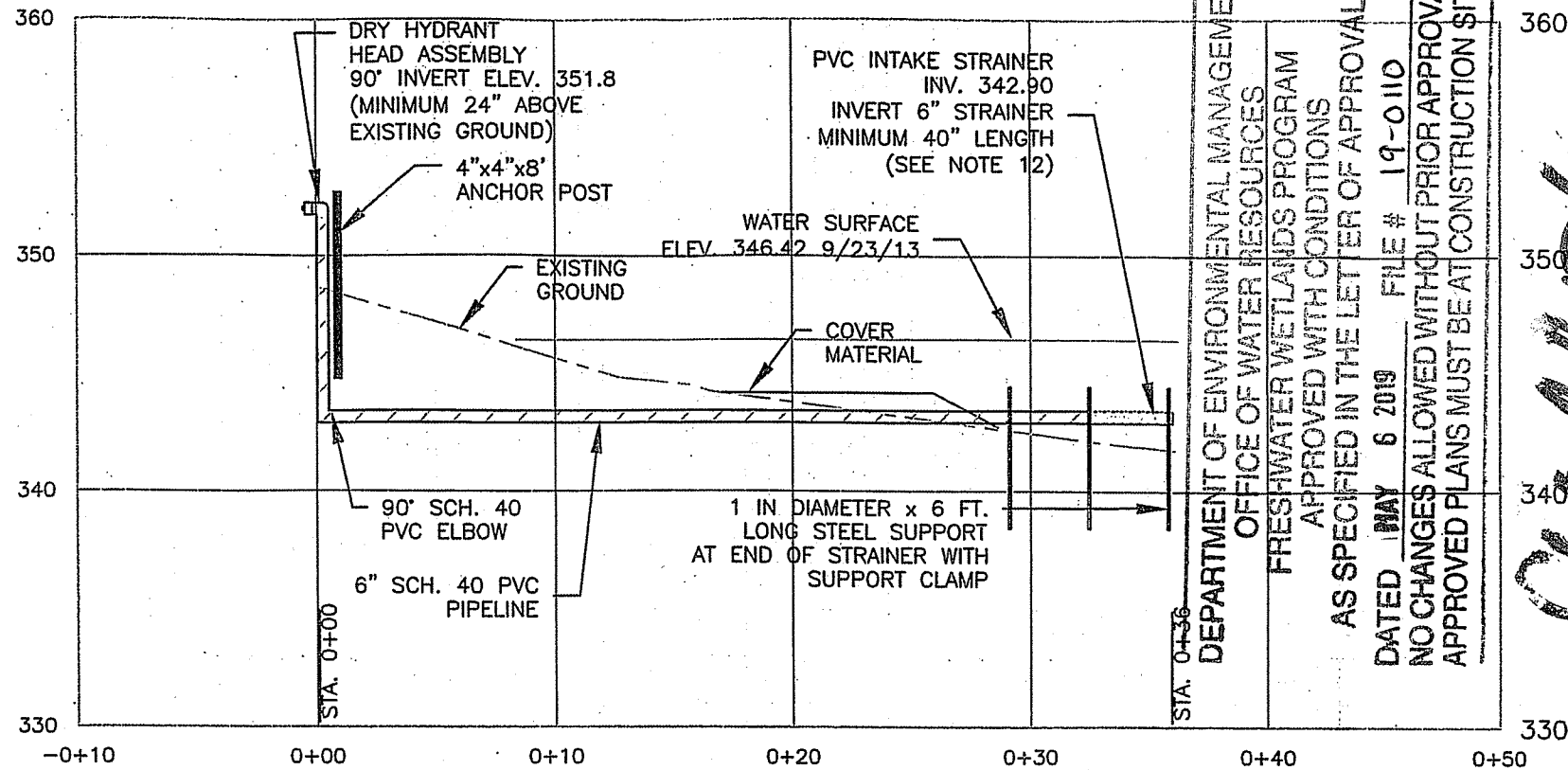
Date	12/2015
Designed	JL
Drawn	JL RL
Checked	A. Gussis
Approved	A. Gussis

WOONSOCKET SPORTSMAN CLUB  
PLAN VIEW



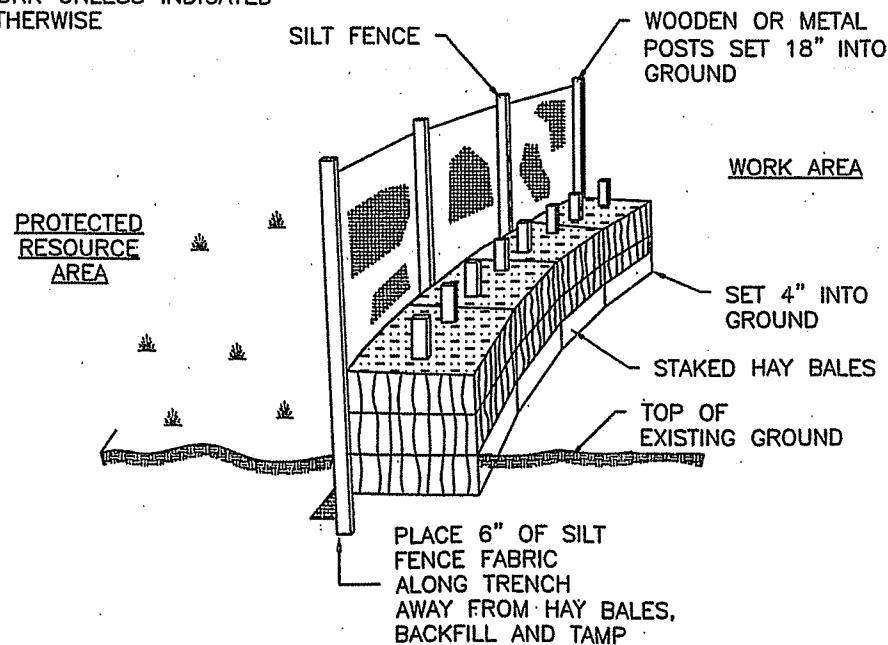
File No.  
Drawing No.  
NRI-02-16  
12/23/15 9:37 AM  
Sheet 2 of 3

Providence County, RI

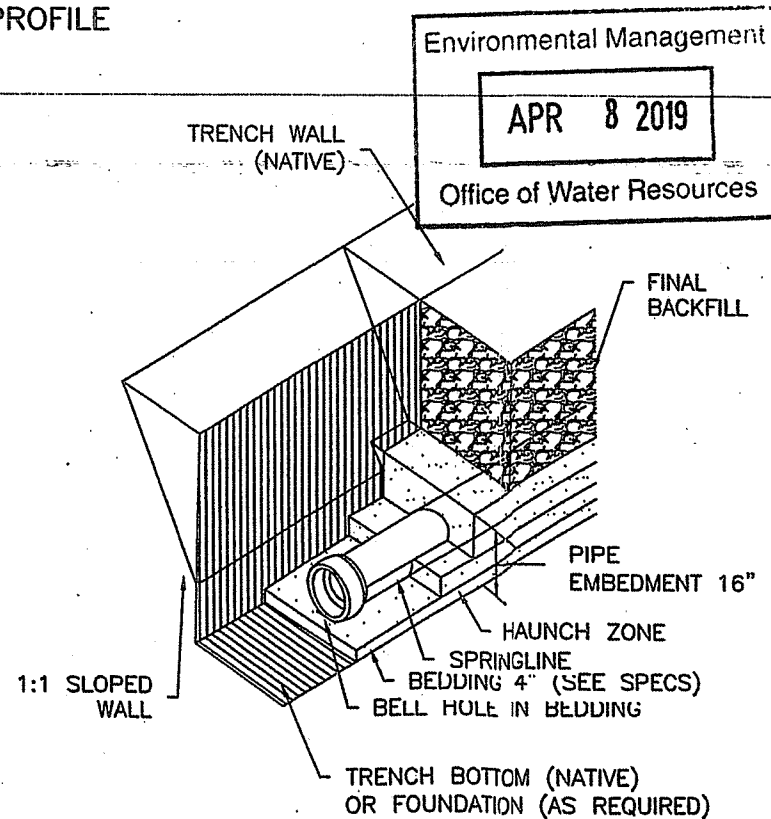


DRY HYDRANT PROFILE

NOTE: ESTABLISH TEMPORARY EROSION CONTROL AT LIMIT OF WORK UNLESS INDICATED OTHERWISE



HAY BALE AND SILT FENCE BARRIER DETAIL NOT TO SCALE



TRENCH INSTALLATION DETAIL ISOMETRIC VIEW NOT TO SCALE

Environmental Management  
**APR 8 2019**  
 Office of Water Resources

CONSTRUCTION NOTES

- INSTALLATION MATERIALS SHALL MEET THE NATURAL RESOURCES CONSERVATION SERVICE (NRCS) STANDARDS AND SPECIFICATIONS. ANY MODIFICATIONS SHALL BE CLEARLY INDICATED ON THE DRAWINGS AND SHALL BE APPROVED BY NRCS PRIOR TO INSTALLATION.
- ALL PERMITS NEEDED TO INSTALL AND OPERATE THIS SYSTEM ARE THE RESPONSIBILITY OF THE OWNER AND SHALL BE OBTAINED BEFORE CONSTRUCTION BEGINS.
- OBTAIN NECESSARY CONSTRUCTION EASEMENTS FROM ADJACENT PROPERTY OWNERS BEFORE CONSTRUCTION TAKES PLACE.
- CONTACT THE N.R.C.S. RHODE ISLAND STATE OFFICE (401-828-1300) BEFORE ANY CONSTRUCTION TAKES PLACE.
- NO CONSTRUCTION SHALL TAKE PLACE UNTIL EROSION CONTROL MEASURES AS SHOWN ON THE PLANS ARE INSTALLED.
- ANY EXCESS EXCAVATED MATERIAL THAT CANNOT BE USED FOR EARTHFILL SHALL BE DISPOSED OF OUTSIDE OF ANY RIVERBANK OR PERIMETER WETLAND.
- ANY UNDERGROUND UTILITIES IN THE AREA OF WORK WILL BE MARKED AND LOCATED BY THE UTILITY PRIOR TO CONSTRUCTION. THE OWNER SHALL CONTACT "DIG SAFE" (1-800-344-7233) OR THE APPROPRIATE UTILITY FOR ASSISTANCE AS NEEDED.
- RESEED ALL DISTURBED AREAS ACCORDING TO THE SEEDING SPECIFICATION.
- PLASTIC PIPE SHALL BE SCHEDULE 40, AND SHALL HAVE A MINIMUM OF 3 FT. OF BEDDING MATERIAL OVER THE PIPE TO PROTECT FROM FREEZING. THE PIPE SHALL BE LOW ENOUGH THAT THE PIPE WILL NORMALLY BE FULL OF WATER, FOR EASE IN PRIMING THE SYSTEM.
- ALL EARTHFILL MATERIAL SHALL CONTAIN NO SOD, BRUSH, ROOTS OR OTHER PERISHABLE MATERIALS. EARTH EMBANKMENTS SHALL CONTAIN NO STONES OR ROCKS PARTICLES OVER 6 INCHES IN DIAMETER. BACKFILL MATERIAL WITHIN 2 FEET OF ANY STRUCTURE OR PIPE SHALL HAVE NO PARTICLES LARGER THAN 3 INCHES IN DIAMETER. BACKFILL AROUND STRUCTURES AND PIPES SHALL BE PLACED IN LAYERS NOT TO EXCEED 4 INCHES IN THICKNESS AND SHALL BE BROUGHT UP UNIFORMLY AROUND THE STRUCTURE. THIS BACKFILL SHALL BE COMPACTED BY HAND TAMPING OR MANUALLY DIRECTED POWER TAMPERS OR PLATE VIBRATORS. HEAVY EQUIPMENT SHOULD BE KEPT A SAFE DISTANCE WITHIN OR OVER ANY STRUCTURE OR PIPE SO AS TO NOT TO CAUSE ANY STRUCTURAL DAMAGE.
- THE HYDRANT SLEEVE SHALL BE MADE OF BRONZE, BRASS, ALUMINUM ALLOY OR OTHER DURABLE, NON-CORROSIVE METAL. SLEEVE MUST BE PERMANENTLY AFFIXED INSIDE A PVC HEAD USING EPOXY ADHESIVE AND STAINLESS STEEL BOLTS. THE HYDRANT HEAD SHALL BE ABLE TO ACCEPT A 6" NHT (AMERICAN NATIONAL FIRE HOSE THREAD) CONNECTION TO PROVIDE MAXIMUM SUPPLY. HYDRANT (6") HEAD SHALL CONFORM TO ASTM 2466. ALL HYDRANTS SHALL CONTAIN A REMOVABLE HEAD STRAINER AND STAINLESS STEEL SNAP RING THAT CAN BE REMOVED WITHOUT SPECIAL TOOLS. THE STRAINER SHALL BE CONICAL IN SHAPE TO MAXIMIZE STRAINING AREA. ALL HYDRANTS SHALL BE USE A RUBBER "O" RING BETWEEN THE THREADED SLEEVE AND PVC HEAD.
- THE DRY HYDRANT CAP SHALL BE SNAP-ON/SNAP-OFF DESIGN AND REMOVABLE WITHOUT SPECIAL TOOLS. IT SHALL BE JOINED WITH A STEEL CABLE OR CHAIN AND BE PERMANENTLY ATTACHED TO THE DRY HYDRANT HEAD. THE CAP SHALL BE HARD PLASTIC OR OF THE SAME METAL AS NHT CONNECTION FOR MAXIMUM CORROSION RESISTANCE.
- STRAINER SHALL BE 6" DIAMETER SCHED. 40 P.V.C. PLASTIC PIPE, WITH FIXED END CAPS 4:1 INTAKE RATIO, AND 3/8" MINIMUM DIAMETER INTAKE HOLES. A SUPPORT ROD SHALL ALSO BE PROVIDED.
- DRY HYDRANT SHALL BE UTILIZED FOR FIRE SUPPRESSION ONLY.
- DRY HYDRANT WAS DESIGNED TO PRODUCE 500 GALLONS PER MINUTE OF FLOW.

BURIED PIPELINE INSTALLATION NOTES:

- FOUNDATION: WHERE THE TRENCH BOTTOM IS UNSTABLE, THE CONTRACTOR SHALL EXCAVATE TO A DEPTH REQUIRED BY THE ENGINEER AND REPLACE WITH A FOUNDATION OF CLASS I OR II MATERIAL AS DEFINED IN ASTM D2321 "STANDARD PRACTICE FOR INSTALLATION OF THERMOPLASTIC PIPE FOR SEWERS AND OTHER GRAVITY-FLOW APPLICATIONS." LATEST EDITION; AS AN ALTERNATIVE AT THE DISCRETION OF THE ENGINEER THE TRENCH BOTTOM MAY BE STABILIZED USING A WOVEN GEOTEXTILE FABRIC.
- BEDDING: SUITABLE MATERIAL SHALL BE CLASS I, II OR III AND INSTALLED AS REQUIRED IN ASTM D2321, LATEST EDITION. UNLESS OTHERWISE SPECIFIED BY THE ENGINEER, MINIMUM BEDDING THICKNESS SHALL BE 4".
- HAUNCHING AND INITIAL BACKFILL: SUITABLE MATERIAL SHALL BE CLASS I, II OR III AND INSTALLED AS REQUIRED IN ASTM D2321, LATEST EDITION.

DEPARTMENT OF ENVIRONMENTAL MANAGEMENT  
 OFFICE OF WATER RESOURCES  
 FRESHWATER WETLANDS PROGRAM  
 APPROVED WITH CONDITIONS  
 AS SPECIFIED IN THE LETTER OF APPROVAL  
 DATED MAY 6 2019 FILE # 19-0110  
 NO CHANGES ALLOWED WITHOUT PRIOR APPROVAL  
 APPROVED PLANS MUST BE AT CONSTRUCTION SITE

*Chris A. Hester*

Date	12/2015
Designed	JL
Drawn	JL RL
Checked	A. Hester
Approved	A. Hester

WOONSOCKET SPORTSMAN CLUB  
 PLAN VIEW

File No.

Drawing No.  
 NRI-02-16

12/23/15 9:37 AM  
 Sheet 3 of 3