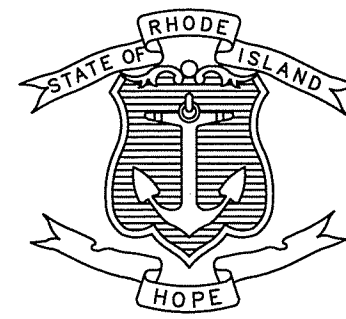


INDEX

SHEET NO.	DESCRIPTION
1	COVER SHEET
2	STANDARD PLAN SYMBOLS & STANDARD LEGEND
3	STANDARD NOTES - 1
4	STANDARD NOTES - 2
5	LIST OF ABBREVIATIONS
6	JOB SPECIFIC PLAN SYMBOLS, LEGEND AND NOTES
7	KEY PLAN
8-14	GENERAL PLANS
15-22	TEMPORARY DRAINAGE PLANS
23-26	DRAINAGE PLANS

STATE OF RHODE ISLAND



DEPARTMENT OF TRANSPORTATION

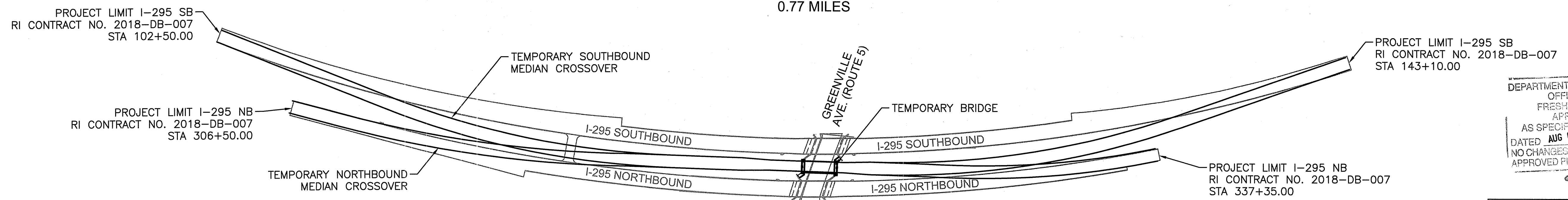
PLAN, PROFILE AND SECTIONS OF PROPOSED STATE HIGHWAY REHABILITATION OF BRIDGE NOS. 074001 & 074021 I-295 OVER GREENVILLE AVENUE RIDEM PERMIT PLANS

PROJECT LIMITS
TOWN OF JOHNSTON
COUNTY OF PROVIDENCE

R.I. CONTRACT NO. 2018-DB-007 F.A. PROJECT NO. BRO-0740(001)

I-295 TEMPORARY MEDIAN CROSSOVER PAVEMENT STRUCTURE
2" BITUMINOUS CONCRETE SURFACE COURSE
5" BITUMINOUS CONCRETE INTERMEDIATE COURSE
12" GRAVEL BORROW SUBBASE COURSE

0.77 MILES



LAYOUT PLAN
1" = 200'

SCALES OF DRAWINGS

Plans	1 inch = 40 feet
Profiles	1 inch = 40 feet Horizontal
Profiles	1 inch = 5 feet Vertical
Cross Sections	1 inch = 4 feet Horizontal
Cross Sections	1 inch = 4 feet Vertical

BASE OF LEVELS
VERTICAL DATUM: NAVD 88

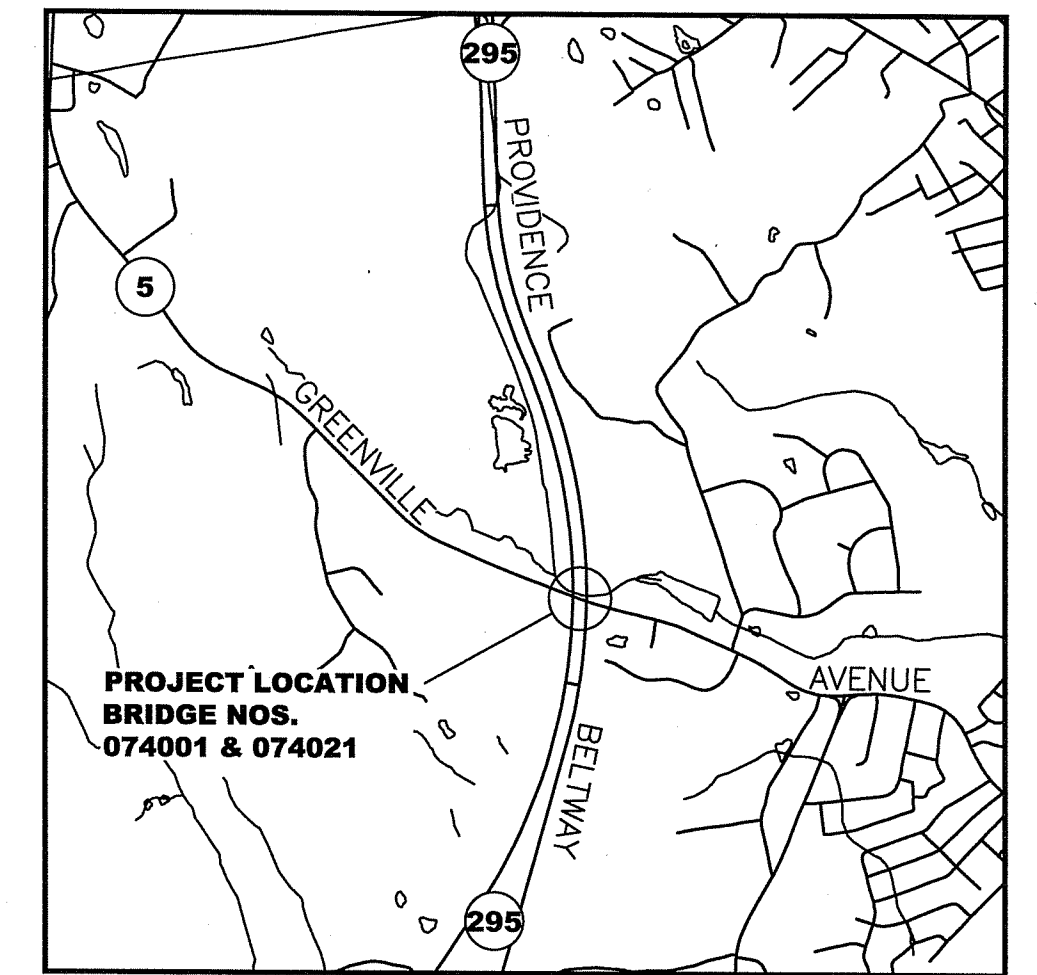
R.I. HORIZONTAL DATUM: STATE PLANE COORDINATES NAD 1983

R.I. STANDARD SPECIFICATIONS AND STANDARD DETAILS

SPECIFICATIONS TO GOVERN THIS PROJECT ARE THE R.I. STANDARD SPECIFICATIONS FOR ROAD AND BRIDGE CONSTRUCTION, AMENDED AUGUST 2013, WITH ALL REVISIONS AND THE STATE AND FEDERAL SPECIAL PROVISIONS INCLUDED IN THE CONTRACT DOCUMENTS. STANDARD DETAILS FOR THIS PROJECT ARE R.I. STANDARD DETAILS, 1998 EDITION, WITH ALL REVISIONS.



FED. ROAD DIV. NO.	STATE	FEDERAL AID PROJECT NO.	FISCAL YEAR	SHEET NO.	TOTAL SHEETS
	RI	BRO-0740(001)	2018	1	26



LOCATION MAP
1" = 2000'

DESIGN DESIGNATION (I-295)

AADT (2017)	78700 V.P.D.
AADT (2037)	96100 V.P.D.
DHV (2037)	9560 V.P.D.
K	9.9%
D	51 /49
T	5.6%

TEMPORARY MEDIAN CROSSOVER
DESIGN SPEED 65 M.P.H.

DEPARTMENT OF ENVIRONMENTAL MANAGEMENT
OFFICE OF WATER RESOURCES
FRESHWATER WETLANDS PROGRAM
APPROVED WITH CONDITIONS
AS SPECIFIED IN THE LETTER OF APPROVAL
DATED AUG 05 2019 FILE # 190159
NO CHANGES ALLOWED WITHOUT PRIOR APPROVAL
APPROVED PLANS MUST BE AT CONSTRUCTION SITE

R.I. DEPARTMENT OF TRANSPORTATION

APPROVED

DEPUTY CHIEF ENGINEER _____ DATE _____

APPROVED

CHIEF ENGINEER _____ DATE _____

APPROVED

DIRECTOR _____ DATE _____

DEPARTMENT OF TRANSPORTATION
FEDERAL HIGHWAY ADMINISTRATION

APPROVED

DIVISION ADMINISTRATOR _____ DATE _____

Contract Number 2018-DB-007

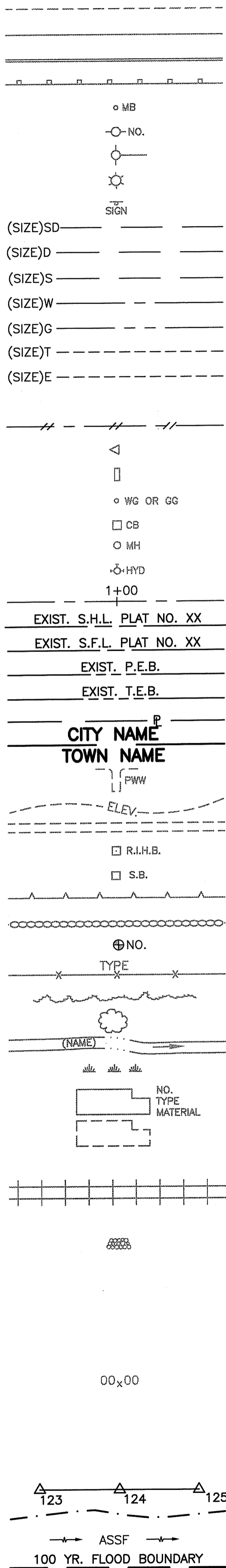
Number of Sheet 1

Total Sheets 26

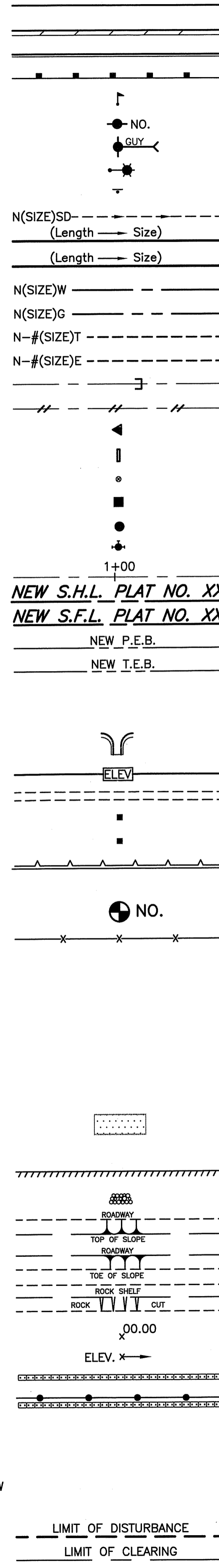
Environmental Management
JUN 11 2019
Office of Water Resources

EXISTING

NEW



- EDGE OF PAVEMENT
- BERM
- CURB
- GUARDRAIL
- MAILBOX
- UTILITY POLE
- POLE GUY
- LUMINAIRE
- SIGN
- SUBDRAIN
- STORMDRAIN
- SANITARY SEWER
- WATER MAIN
- GAS MAIN
- TELEPHONE DUCT
- ELECTRIC DUCT
- PLUG AND CAP PIPE
- ABANDONED UTILITY
- FLARED END SECTION
- HEADWALL
- WATER OR GAS GATE
- CATCH BASIN
- MANHOLE
- HYDRANT
- BASELINE OR CENTERLINE
- STATE HIGHWAY LINE
- STATE FREEWAY LINE
- PERMANENT EASEMENT LINE
- TEMPORARY EASEMENT LINE
- PROPERTY LINE
- CITY OR TOWN LINE
- PAVED WATERWAY
- CONTOUR LINE
- OPEN DITCH
- R.I. HIGHWAY BOUND
- STONE BOUND
- RETAINING WALL
- FIELD STONE WALL
- BORINGS
- FENCE
- WOOD OR BRUSH LINE
- TREES
- RIVER OR STREAM
- WETLAND AREA
- BUILDING
- FOUNDATION
- BUILDING TO BE REMOVED
- RAILROAD TRACKS
- CUT AND MATCH
- RIP-RAP
- CUT SLOPE
- FILL SLOPE
- ROCK CUT
- SPOT GRADE
- AREA GRADED TO DRAIN
- BALED HAY RI STD. 9.1.0
- BALED HAY & SILT FENCE RI STD. 9.3.0
- EDGE OF WETLAND
- WETLAND PERIMETER
- AREA SUBJECT TO STORM FLOW
- 100-YEAR FLOOD PLAIN
- LIMIT OF DISTURBANCE
- LIMIT OF CLEARING



- 1.1.0 UNDERDRAIN
- 1.3.0 CONCRETE CONNECTING COLLAR
- 2.1.0 CONCRETE HEADWALLS FOR PIPE CULVERTS
- 2.2.0 STANDARD HEADWALLS FOR MULTIPLE 3'-6" TO 7'-0" PIPE CULVERTS
- 2.3.0 (DIA.) PRECAST CONCRETE FLARED END SECTION
- 3.2.0 BRICK/SOLID BLOCK 4'-0" ROUND MANHOLE
- 3.2.1 (DIA.) BRICK/SOLID BLOCK 5'-0" OR 6'-0" ROUND MANHOLE
- 3.3.0 BRICK/SOLID BLOCK TYPE "D" SQUARE CATCH BASIN
- 3.3.2 BRICK/SOLID BLOCK TYPE "F" SQUARE CATCH BASIN
- 3.3.3 SOLID BLOCK FLUSH SQUARE CATCH BASIN
- 3.4.0 BRICK/SOLID BLOCK TYPE "D" ROUND CATCH BASIN
- 3.4.1 BRICK/SOLID BLOCK ROUND CATCH BASIN WITH GUTTER INLET
- 3.4.2 BRICK/SOLID BLOCK TYPE "F" ROUND CATCH BASIN
- 3.4.3 BRICK/SOLID BLOCK TYPE "R" CATCH BASIN
- 3.4.4 SOLID BLOCK FLUSH ROUND CATCH BASIN
- 3.4.5 (DIA.) BRICK/SOLID BLOCK 5'-0" OR 6'-0" ROUND CATCH BASIN
- 3.5.0 SOLID BLOCK SHALLOW TYPE "F" SQUARE CATCH BASIN
- 3.5.1 (SIZE) SOLID BLOCK SHALLOW 5'-0" OR 6'-0" SQUARE CATCH BASIN
- 3.6.0 BRICK/SOLID BLOCK DROP INLET
- 3.7.0 (DIA.) BRICK/SOLID BLOCK ROUND MANHOLE OR CATCH BASIN GREATER THAN 12'-0"
- 4.2.0 PRECAST 4'-0" ROUND MANHOLE
- 4.2.1 PRECAST 5'-0" ROUND MANHOLE
- 4.2.2 PRECAST 6'-0" ROUND MANHOLE
- 4.3.0 (SIZE) PRECAST 4'-0" OR 6'-0" SQUARE MANHOLE OR CATCH BASIN
- 4.4.0 (DIA.) PRECAST 4'-0", 5'-0", OR 6'-0" ROUND CATCH BASIN
- 4.5.0 PRECAST CONCRETE DROP INLET
- 4.5.1 PRECAST CONCRETE DROP INLET LATERAL OUTLET
- 4.5.2 PRECAST CONCRETE DROP INLET LONGITUDINAL OUTLET
- 5.3.0 CATCH BASIN AND MANHOLE STEP
- 5.4.0 CONCRETE COLLARS
- 6.1.0 LIGHT-DUTY SQUARE FRAME AND ROUND COVER
- 6.1.1 HEAVY DUTY SQUARE FRAME AND ROUND COVER
- 6.2.0 LIGHT-DUTY ROUND FRAME AND COVER
- 6.2.1 HEAVY-DUTY ROUND FRAME AND COVER
- 6.3.0 SQUARE FRAME AND GRATE
- 6.3.1 SQUARE FRAME AND GRATE
- 6.3.2 SQUARE FRAME AND GRATE (BICYCLE SAFE)
- 6.3.3 HIGH CAPACITY FRAME AND GRATE
- 6.3.4 HIGH CAPACITY FRAME AND GRATE (BICYCLE SAFE)
- 6.4.0 ROUND FRAME AND GRATE
- 7.1.0S PRECAST CONCRETE CURB (STRAIGHT)
- 7.1.0C PRECAST CONCRETE CURB (CIRCULAR)
- 7.1.1 3'-0" PRECAST CONCRETE TRANSITION CURB
- 7.1.2 6'-0" PRECAST CONCRETE TRANSITION CURB
- 7.1.4 PRECAST 2'-0" RADIUS CORNER
- 7.1.5 PRECAST CONCRETE INLET STONE (FOR SQUARE CATCH BASIN)
- 7.1.6 PRECAST CONCRETE INLET STONE (FOR ROUND CATCH BASIN)
- 7.1.7 PRECAST CONCRETE APRON STONE (FOR SQUARE CATCH BASIN)
- 7.1.8 PRECAST CONCRETE APRON STONE (FOR ROUND CATCH BASIN)
- 7.2.0S PRECAST CONCRETE SLOPED FACE CURB (STRAIGHT)
- 7.2.0C PRECAST CONCRETE SLOPED FACE CURB (CIRCULAR)
- 7.2.1 PRECAST CONCRETE SLOPED FACE TRANSITION CURB
- 7.2.2 PRECAST CONCRETE TRANSITION CURB (VERTICAL FACE TO SLOPED FACE)
- 7.3.0S GRANITE CURB (STRAIGHT)
- 7.3.0C GRANITE CURB (CIRCULAR)
- 7.3.1 3'-0" GRANITE TRANSITION CURB
- 7.3.2 6'-0" GRANITE TRANSITION CURB
- 7.3.3 GRANITE WHEELCHAIR RAMP TRANSITION CURB
- 7.3.4 GRANITE 2'-0" RADIUS CORNER
- 7.3.5 GRANITE INLET STONE (FOR SQUARE CATCH BASIN)
- 7.3.6 GRANITE INLET STONE (FOR ROUND CATCH BASIN)
- 7.3.7 GRANITE APRON STONE (FOR SQUARE CATCH BASIN)
- 7.3.8 GRANITE APRON STONE (FOR ROUND CATCH BASIN)
- 7.4.0 GRANITE SLOPED FACE CURB
- 7.4.1 GRANITE SLOPED FACE TRANSITION CURB
- 7.4.2 GRANITE TRANSITION CURB (VERTICAL FACE TO SLOPE FACE)
- 7.5.0 BITUMINOUS CONCRETE LIP CURB
- 7.5.1A BITUMINOUS BERM (CONSTRUCTION METHOD A)
- 7.5.1B BITUMINOUS BERM (CONSTRUCTION METHOD B)
- 7.6.0 CURB SETTING DETAIL
- 8.2.0 BITUMINOUS CONCRETE DITCH
- 8.3.0 RIP-RAP DITCH
- 8.4.0 PAVED WATERWAY
- 9.1.0 BALED HAY EROSION CHECK
- 9.2.0 SILT FENCE DETAIL
- 9.3.0 BALED HAY DITCH EROSION CHECK AND SILT FENCE COMBINED
- 9.4.0 BALED HAY DITCH AND SWALE EROSION CHECK
- 9.5.0 LOG AND HAY CHECK DAM
- 9.6.0 DEWATERING BASIN
- 9.8.0 BALED HAY CATCH BASIN INLET PROTECTION
- 9.9.0 CONSTRUCTION ACCESS
- 10.1.0 WET STONE MASONRY RETAINING WALL
- 10.2.0 RUBBLE MASONRY WALL
- 10.3.0 CONCRETE RETAINING WALL
- 10.4.0 STONE MASONRY STEPS
- 14.1.0 CONCRETE HIGHWAY BOUND
- 15.1.0 POST AND MOUNTINGS FOR RURAL MAILBOX
- 15.2.0 (NO.) POST AND MULTIPLE MOUNTINGS FOR RURAL MAILBOXES
- 18.2.0 PRECAST TYPE "A" HANDHOLE
- 18.2.2 HEAVY DUTY TYPE "H" HANDHOLE
- 18.3.0 ALUMINUM LIGHTING STANDARDS
- 20.2.0 BI-DIRECTIONAL CONTROL DEVICE
- 24.6.1 STREET SIGN MOUNTING DETAIL
- 26.2.0 POLYETHYLENE DRUM WITH MARKINGS
- 26.3.0 PVC PLASTIC PIPE TYPE III BARRICADE
- 31.1.0 CHAIN LINK FENCE 3'-0" TO 4'-0"
- 31.2.0 CHAIN LINK FENCE 5'-0" TO 6'-0"
- 31.2.1 CHAIN LINK FENCE 5'-0" TO 6'-0" INTERMEDIATE POST
- 31.3.0 WOVEN WIRE RIGHT-OF-WAY FENCE (STEEL POST)
- 34.1.0 TYPICAL GUARDRAIL INSTALLATION
- 34.2.0 STEEL BEAM GUARDRAIL
- 34.2.1 STEEL BEAM GUARDRAIL DETAILS
- 34.2.2 STEEL BEAM GUARDRAIL DOUBLE FACED ASSEMBLY
- 34.2.3 STEEL BEAM GUARDRAIL FIXTURES
- 34.2.5 STEEL BEAM GUARDRAIL REFLECTORIZED TRIANGULAR DELINEATOR
- 34.3.1 GUARDRAIL END SECTION
- 34.3.2 TERMINAL END SECTION (SINGLE FACE)
- 34.3.3 ANCHORAGE DETAILS APPROACH END SECTION
- 34.3.4 ANCHORAGE DETAILS TRAILING END SECTION
- 34.4.0 STEEL BACKED TIMBER GUARDRAIL
- 34.4.1 STEEL BACKED TIMBER GUARDRAIL TERMINAL SECTION-TYPE 1
- 40.1.0 DOUBLE-FACED PRECAST MEDIAN BARRIER
- 40.2.0 SINGLE-FACED PRECAST MEDIAN BARRIER
- 40.2.1 SINGLE-FACED PRECAST MEDIAN BARRIER
- 40.3.0 PRECAST MEDIAN BARRIER TRANSITION UNIT
- 40.5.0 PRECAST MEDIAN BARRIER FOR TEMPORARY TRAFFIC CONTROL
- 43.1.0 CEMENT CONCRETE SIDEWALK
- 43.2.0 BITUMINOUS CONCRETE SIDEWALK
- 43.3.0 WHEELCHAIR RAMP
- 43.3.1 WHEELCHAIR RAMP FOR LIMITED RIGHT-OF-WAY AREAS
- 43.4.0 DRIVEWAY DEVELOPMENT FOR 3'-0" TRANSITION CURB
- 43.4.1 DRIVEWAY DEVELOPMENT FOR 6'-0" TRANSITION CURB
- 43.5.0 CEMENT CONCRETE DRIVEWAYS
- 48.1.0 DETECTABLE WARNING SYSTEM
- 51.1.0 TREE PROTECTION DEVICE
- 51.1.1 DRIP LINE TREE PROTECTION DEVICE FOR EXISTING TREES
- 51.2.0 SHRUB PROTECTION DEVICE
- 51.3.0 TREE WELL
- 51.4.0 TREE WALL

- AB ADJUST CATCH BASIN TO GRADE
- ABM ADJUST CATCH BASIN TO MANHOLE
- AC ADJUST CURB STOP TO GRADE
- AD ADJUST DRAINAGE MANHOLE TO GRADE
- AE ADJUST ELECTRIC MANHOLE TO GRADE
- AFC ADJUST FRAME AND COVER TO GRADE
- AFG ADJUST FRAME AND GRATE TO GRADE
- AG ADJUST GAS GATE BOX TO GRADE
- AHH ADJUST HANDHOLE TO GRADE
- AS ADJUST SANITARY SEWER MANHOLE TO GRADE
- AT ADJUST TELEPHONE MANHOLE TO GRADE
- AW ADJUST WATER GATE BOX TO GRADE
- BCD BITUMINOUS CONCRETE DRIVEWAY 3" BITUMINOUS CONCRETE TYPE 1-2 8" GRAVEL BORROW SUBBASE COURSE
- BPS BUILD NEW STRUCTURE OVER EXISTING PIPE
- CCB CLEAN CATCH BASIN
- CCP CUT AND CAP PIPE WITH RESTRAINT (ALL SIZES)
- CFP CLEAN AND FLUSH PIPE
- CG CLEARING AND GRUBBING
- CMH CLEAN MANHOLE
- CP (DEPTH) COLD PLANE
- CPP CUT AND PLUG PIPE (ALL TYPES, ALL SIZES)
- DB REMOVE AND DISPOSE BITUMINOUS CURB
- DC REMOVE AND DISPOSE CONCRETE CURB
- DCB REMOVE AND DISPOSE CATCH BASIN
- DDI REMOVE AND DISPOSE DROP INLET
- DF REMOVE AND DISPOSE FENCE
- DFC REMOVE AND DISPOSE FRAME AND COVER
- DFE REMOVE AND DISPOSE FLARED END SECTION
- DFG REMOVE AND DISPOSE FRAME AND GRATE
- DFH REMOVE AND DISPOSE FIRE HYDRANT
- DFP REMOVE AND DISPOSE FLEXIBLE PAVEMENT
- DG REMOVE AND DISPOSE GUARDRAIL
- DH REMOVE AND DISPOSE HEADWALL
- DHB REMOVE AND DISPOSE HIGHWAY BOUND
- DHH REMOVE AND DISPOSE HANDHOLE
- DL REMOVE AND DISPOSE LIGHT AND FOUNDATION
- DMB REMOVE AND DISPOSE MEDIAN BARRIER
- DMH REMOVE AND DISPOSE MANHOLE
- DMM REMOVE AND DISPOSE MEDIAN MARKER
- DOW REMOVE AND DISPOSE OBSERVATION WELL
- DP REMOVE AND DISPOSE PIPE
- DPB REMOVE AND DISPOSE PAVEMENT AND RIGID BASE
- DRB REMOVE AND DISPOSE RIGID BASE
- DS REMOVE AND DISPOSE SIGN
- DSS REMOVE AND DISPOSE TRAFFIC SIGNAL SYSTEM
- DSW REMOVE AND DISPOSE SIDEWALK
- DTD REMOVE AND DISPOSE TELEPHONE DUCT BANKS
- DUP REMOVE AND DISPOSE UTILITY POLE
- DWW REMOVE AND DISPOSE PAVED WATERWAY
- FF FILTER FABRIC RIPRAP FLARED END UNDERLAYMENT
- GET FLARED GUARDRAIL END TREATMENT
- IA IMPACT ATTENUATOR
- IDL IMPERVIOUS DITCH LINER
- LOD LIMIT OF DISTURBANCE
- LOR LIMIT OF REGRADING
- LS 4" LOAM AND SEED

- NFH NEW FIRE HYDRANT WITH GATE VALVE
- NIC NOT IN THIS CONSTRUCTION CONTRACT
- NWB FURNISH AND INSTALL NEW WATER GATE VALVE BOX
- NWVB FURNISH AND INSTALL NEW WATER GATE VALVE AND BOX
- NWCB FURNISH AND INSTALL NEW WATER CURB STOP BOX
- NWSB FURNISH AND INSTALL NEW WATER CURB STOP AND BOX
- PCD PERMANENT CHECK DAM
- PS 4" PLANTABLE SOIL AND SEED
- RCB RECONSTRUCT TYPE "D" CATCH BASIN, TO CATCH BASIN WITH GUTTER INLET
- RCM R.I.D.O.T. COMMUNICATIONS MANHOLE
- RHH REMOVE, HANDLE, HAUL, TRIM, RESET CURB EDGING, STRAIGHT, CIRCULAR (ALL TYPES)
- RLP RELOCATE LAMP POST
- RMB RELOCATE MAILBOX (BY OTHERS)
- RPM REMOVE PAVEMENT MARKINGS
- RRP RIP-RAP PAD (SEE DETAIL)
- RRS REMOVE AND RELOCATE SIGN
- RUP RELOCATE UTILITY POLE (BY OTHERS)
- SB STONE BAFFLE
- SBAE STEEL BEAM BRIDGE CONNECTION APPROACH END (W/O NESTED RAIL)
- SBTE STEEL BEAM BRIDGE CONNECTION TRAILING END (W/NESTED RAIL)
- SD STRUCTURAL DISPOSITION - SEE CS PAGES OF SPECIFICATION
- SF REMOVE AND STOCKPILE FENCE
- SGA SPECIAL GRADED AGGREGATE
- SGC REMOVE AND STOCKPILE GRANITE CURB
- SGR REMOVE AND STOCKPILE GUARDRAIL
- SH REMOVE AND STOCKPILE HYDRANT
- SS REMOVE AND STOCKPILE SIGN
- STS REMOVE AND STOCKPILE TRAFFIC SIGNAL SYSTEM
- TB CONCRETE THRUST BLOCK
- TEP TIE EXISTING PIPE INTO NEW STRUCTURE
- TNP TIE NEW PIPE INTO EXISTING STRUCTURE
- TBT THRE BEAM TRANSITION
- TBBC THRE BEAM BRIDGE CONNECTION
- TT TREE TRIMMING
- WCM 4" WOOD CHIP MULCH
- 4DY 4" EPOXY RESIN PAVEMENT MARKINGS - DOUBLE YELLOW
- 6W 6" EPOXY RESIN PAVEMENT MARKINGS - WHITE
- 12W 12" EPOXY RESIN PAVEMENT MARKINGS - WHITE
- 6WT 6" PREFORMED PATTERNED MARKING (HIGH PERFORMANCE TAPE)
- 4Y 4" EPOXY RESIN PAVEMENT MARKINGS - YELLOW
- 6Y 6" EPOXY RESIN PAVEMENT MARKINGS - YELLOW
- P.G.L. PROFILE GRADE LINE

DEPARTMENT OF ENVIRONMENTAL MANAGEMENT
 OFFICE OF WATER RESOURCES
 FRESHWATER WETLANDS PROGRAM
 APPROVED WITH CONDITIONS
 AS SPECIFIED IN THE LETTER OF APPROVAL
 DATED AUG 05 2019 FILE # 190159
 NO CHANGES ALLOWED WITHOUT PRIOR APPROVAL
 APPROVED PLANS MUST BE AT CONSTRUCTION SITE

Environmental Management
JUN 11 2019
Office of Water Resources

THIS PLAN SHALL NOT BE ALTERED

REVISIONS		
NO.	DATE	BY
1	6/07	TRB

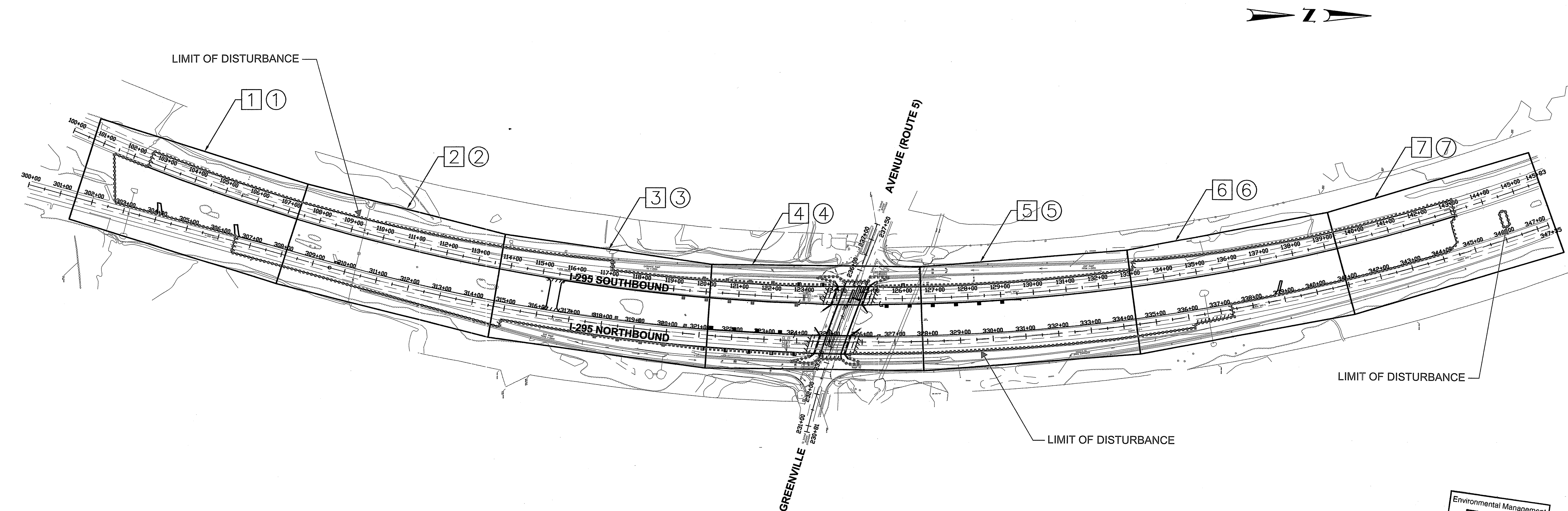
RHODE ISLAND
 DEPARTMENT OF TRANSPORTATION

REHABILITATION OF
 BRIDGE NOS. 074001 & 074021
 I-295 OVER GREENVILLE AVE
 JOHNSTON, RHODE ISLAND

STANDARD PLAN SYMBOLS & STANDARD LEGEND

CHECKED BY APJ DATE 4/3/2019 SCALE NO SCALE

FED. ROAD DIV. NO.	STATE	FEDERAL AID PROJECT NO.	FISCAL YEAR	SHEET NO.	TOTAL SHEETS
	RI	BRO-0740(001)	2018	7	26



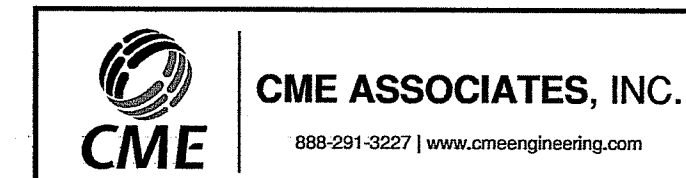
LEGEND

- # GENERAL PLAN
- ⊕ SIGNING & STRIPING PLAN

Environmental Management
JUL 30 2019
 Office of Water Resources

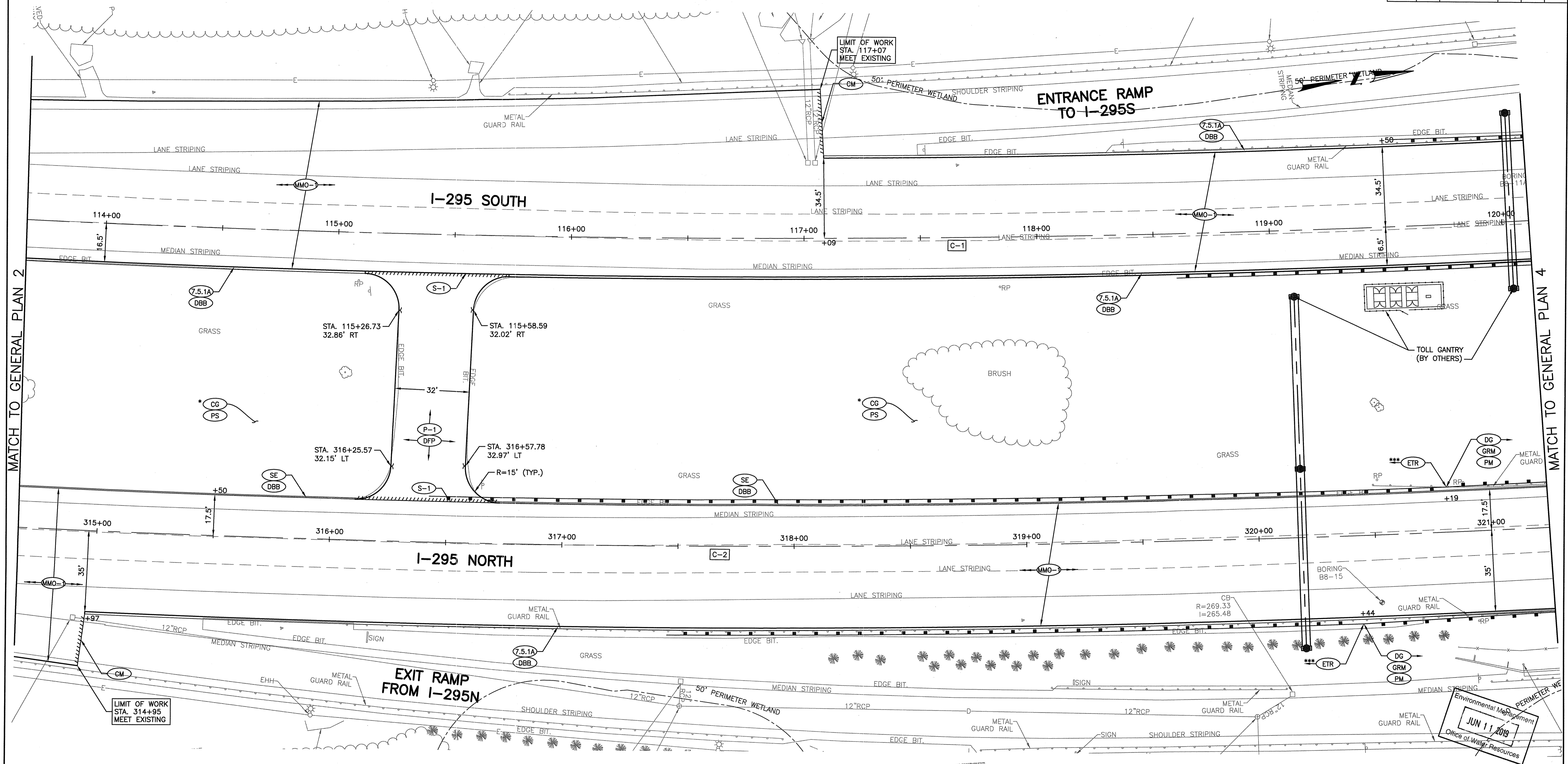
DEPARTMENT OF ENVIRONMENTAL MANAGEMENT
 OFFICE OF WATER RESOURCES
 FRESHWATER WETLANDS PROGRAM
 APPROVED WITH CONDITIONS
 AS SPECIFIED IN THE LETTER OF APPROVAL
 DATED **AUG 05 2019** FILE # **19-0159**
 NO CHANGES ALLOWED WITHOUT PROPERLY REVISED APPROVED PLANS MUST BE AT CONSTRUCTION SITE

Quinn D. Schuch



REVISIONS			RHODE ISLAND DEPARTMENT OF TRANSPORTATION	
NO.	DATE	BY	REHABILITATION OF BRIDGE NOS. 074001 & 074021 I-295 OVER GREENVILLE AVE JOHNSTON, RHODE ISLAND	
			KEY PLAN	

CHECKED BY JDL DATE 7/24/2019 SCALE NO SCALE



MATCH TO GENERAL PLAN 2

MATCH TO GENERAL PLAN 4

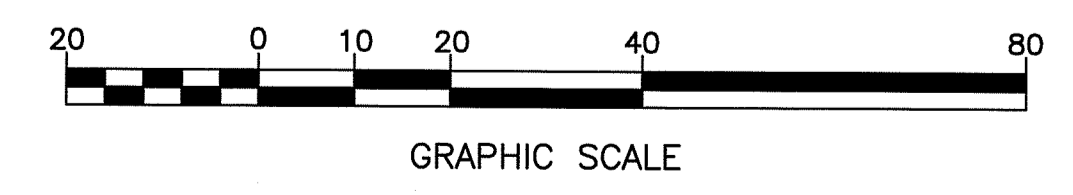
CURVE	STATION	NORTHING	EASTING	Δ	RADIUS	LENGTH	TANGENT
C-1	PC 100+00.00	276832.8031	324456.0100	44°15'09"	5933.77	4582.97	2412.628
	PT 145+82.97	281300.3825	324600.1315				

CURVE	STATION	NORTHING	EASTING	Δ	RADIUS	LENGTH	TANGENT
C-2	PC 309+52.96	277612.4787	324876.4353	35°43'19"	6065.78	3781.82	1954.638
	PT 347+34.78	281330.4461	324729.7265				

- * REMOVE TEMPORARY CROSSOVER ROADWAY AND RESTORE CENTER MEDIAN TO EXISTING GRADES. SEE DRAINAGE PLANS FOR CONTOURS.
- *** GUARDRAIL TO BE INSTALLED UNDER TOLL GANTRY PROJECT (BY OTHERS).

DEPARTMENT OF ENVIRONMENTAL MANAGEMENT
 OFFICE OF WATER RESOURCES
 FRESHWATER WETLANDS PROGRAM
 APPROVED WITH CONDITIONS
 AS SPECIFIED IN THE LETTER OF APPROVAL
 DATED AUG 6 2019 FILE # 19-0159
 NO CHANGES ALLOWED WITHOUT PRIOR APPROVAL
 APPROVED PLANS MUST BE AT CONSTRUCTION SITE

Signature



CME ASSOCIATES, INC.
 888-291-3227 | www.cmeengineering.com

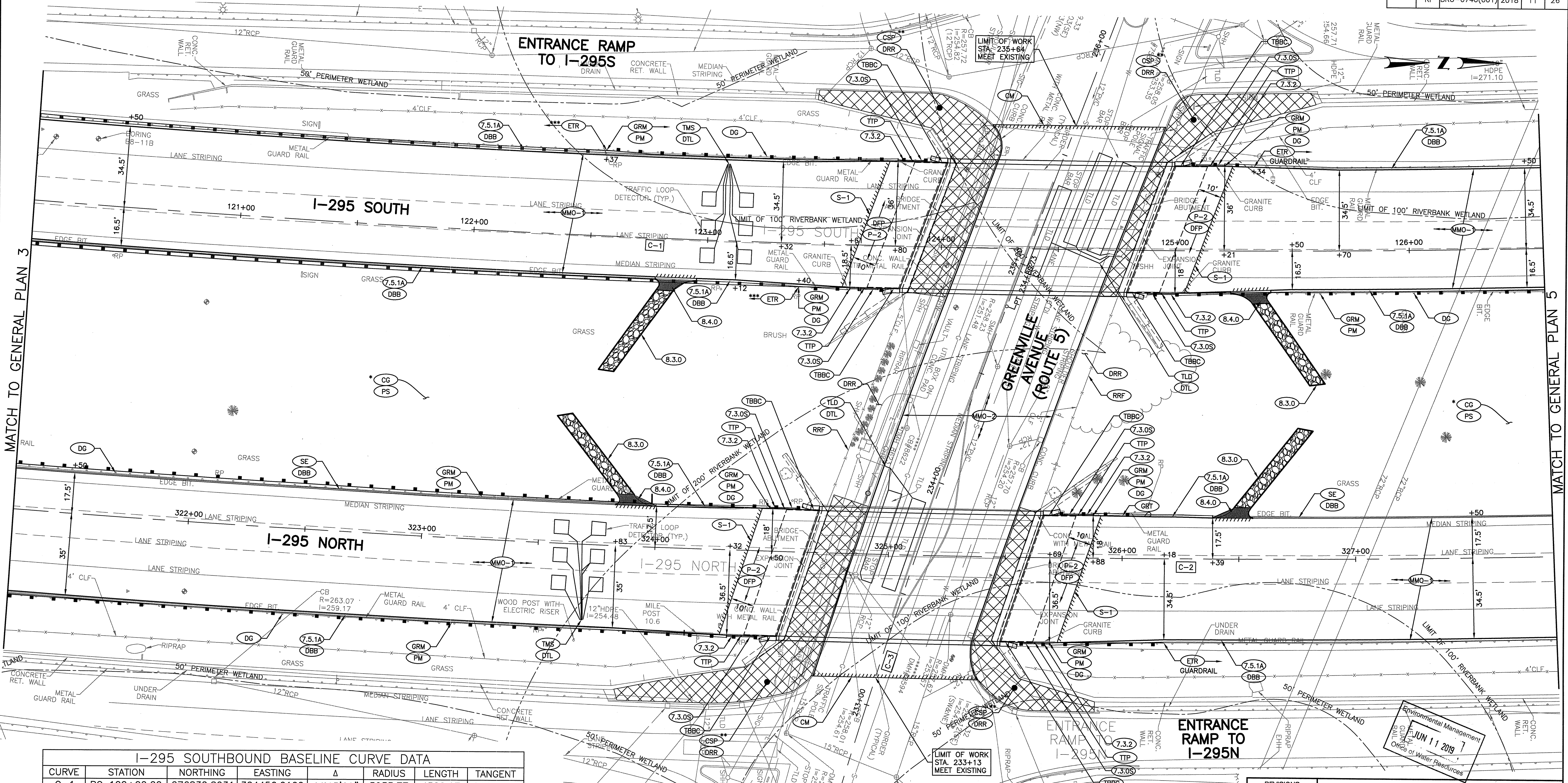
REVISIONS		
NO.	DATE	BY

RHODE ISLAND
 DEPARTMENT OF TRANSPORTATION
 REHABILITATION OF
 BRIDGE NOS. 074001 & 074021
 I-295 OVER GREENVILLE AVE
 JOHNSTON, RHODE ISLAND

GENERAL PLAN
 SHEET 3 OF 7

CHECKED BY JDL DATE 4/3/2019 SCALE 1"=20'

Environmental Management
 JUN 11 2019
 Office of Water Resources



MATCH TO GENERAL PLAN 3

MATCH TO GENERAL PLAN 5

I-295 SOUTHBOUND BASELINE CURVE DATA

CURVE	STATION	NORTHING	EASTING	Δ	RADIUS	LENGTH	TANGENT
C-1	PC 100+00.00	276832.8031	324456.0100	44°15'09"	5933.77	4582.97	2412.628
	PT 145+82.97	281300.3825	324600.1315				

I-295 NORTHBOUND BASELINE CURVE DATA

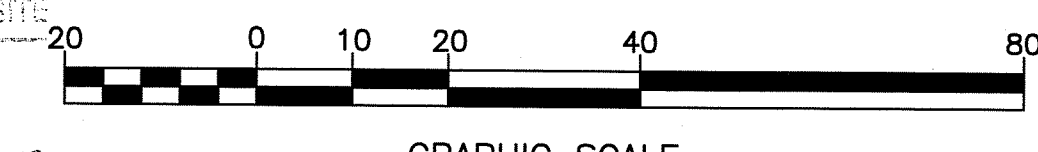
CURVE	STATION	NORTHING	EASTING	Δ	RADIUS	LENGTH	TANGENT
C-2	PC 309+52.96	277612.4787	324876.4353	35°43'19"	6065.78	3781.82	1954.638
	PT 347+34.78	281330.4461	324729.7265				

GREENVILLE AVENUE BASELINE CURVE DATA

CURVE	STATION	NORTHING	EASTING	Δ	RADIUS	LENGTH	TANGENT
C-3	PC 230+81.21	279071.3637	325373.9256	06°50'30"	3345.84	399.52	199.998
	PT 234+80.73	279189.1265	324992.4042				

DEPARTMENT OF ENVIRONMENTAL MANAGEMENT
 OFFICE OF WATER RESOURCES
 FRESHWATER WETLANDS PROGRAM
 APPROVED WITH CONDITIONS
 AS SPECIFIED IN THE LETTER OF APPROVAL
 DATED Aug 05 2019 FILE # 19-0159
 NO CHANGES ALLOWED WITHOUT PRECISE APPROVAL
 APPROVED PLANS MUST BE AT CONSTRUCTION SITE

- * REMOVE TEMPORARY CROSSOVER ROADWAY AND RESTORE CENTER MEDIAN TO EXISTING GRADES. SEE DRAINAGE PLANS FOR CONTOURS.
- ** SEE BRIDGE PLANS FOR "CSP" DETAILS.
- *** GUARDRAIL TO BE INSTALLED UNDER TOLL GANTRY PROJECT (BY OTHERS).



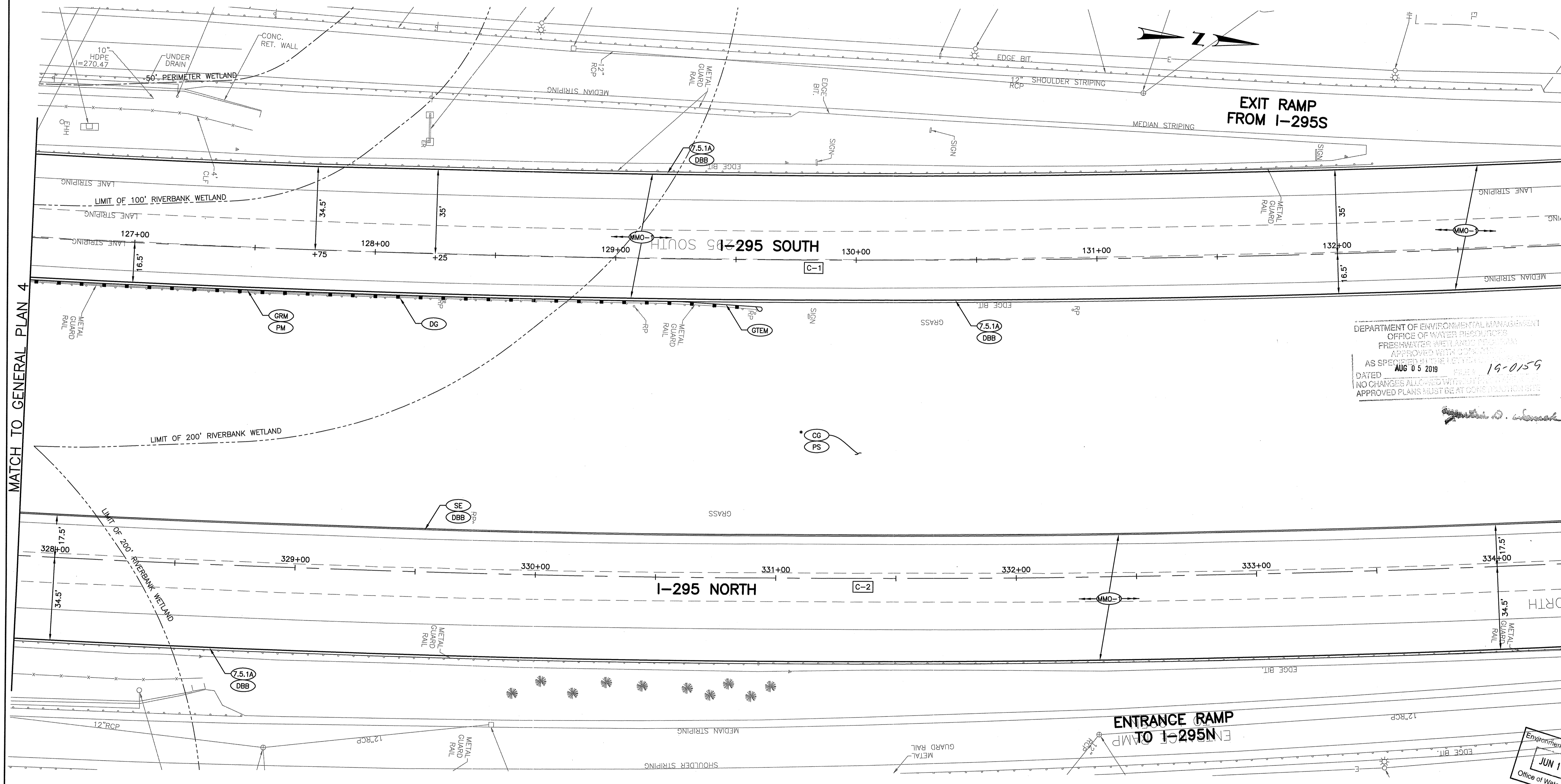
CME ASSOCIATES, INC.
 888-291-3227 | www.cmeengineering.com

REVISIONS		
NO.	DATE	BY

RHODE ISLAND
 DEPARTMENT OF TRANSPORTATION
 REHABILITATION OF
 BRIDGE NOS. 074001 & 074021
 I-295 OVER GREENVILLE AVE
 JOHNSTON, RHODE ISLAND

GENERAL PLAN
 SHEET 4 OF 7

CHECKED BY JDL DATE 4/3/2019 SCALE 1"=20'



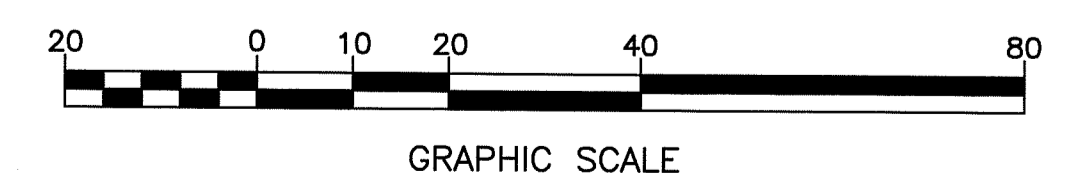
DEPARTMENT OF ENVIRONMENTAL MANAGEMENT
 OFFICE OF WATER RESOURCES
 FRESHWATER WETLAND PROGRAM
 APPROVED WITH COMMENTS
 AS SPECIFIED IN THE LETTER
 DATED AUG 05 2019 FILE # 19-0159
 NO CHANGES ALLOWED WITHOUT PREVIOUSLY
 APPROVED PLANS MUST BE AT CORRECTION SITE

Signature

CURVE	STATION	NORTHING	EASTING	Δ	RADIUS	LENGTH	TANGENT
C-1	PC 100+00.00	276832.8031	324456.0100	44°15'09"	5933.77	4582.97	2412.628
	PT 145+82.97	281300.3825	324600.1315				

CURVE	STATION	NORTHING	EASTING	Δ	RADIUS	LENGTH	TANGENT
C-2	PC 309+52.96	277612.4787	324876.4353	35°43'19"	6065.78	3781.82	1954.638
	PT 347+34.78	281330.4461	324729.7265				

* REMOVE TEMPORARY CROSSOVER ROADWAY AND RESTORE CENTER MEDIAN TO EXISTING GRADES. SEE DRAINAGE PLANS FOR CONTOURS.



CME ASSOCIATES, INC.
 888-291-3227 | www.cmeengineering.com

NO.	DATE	BY

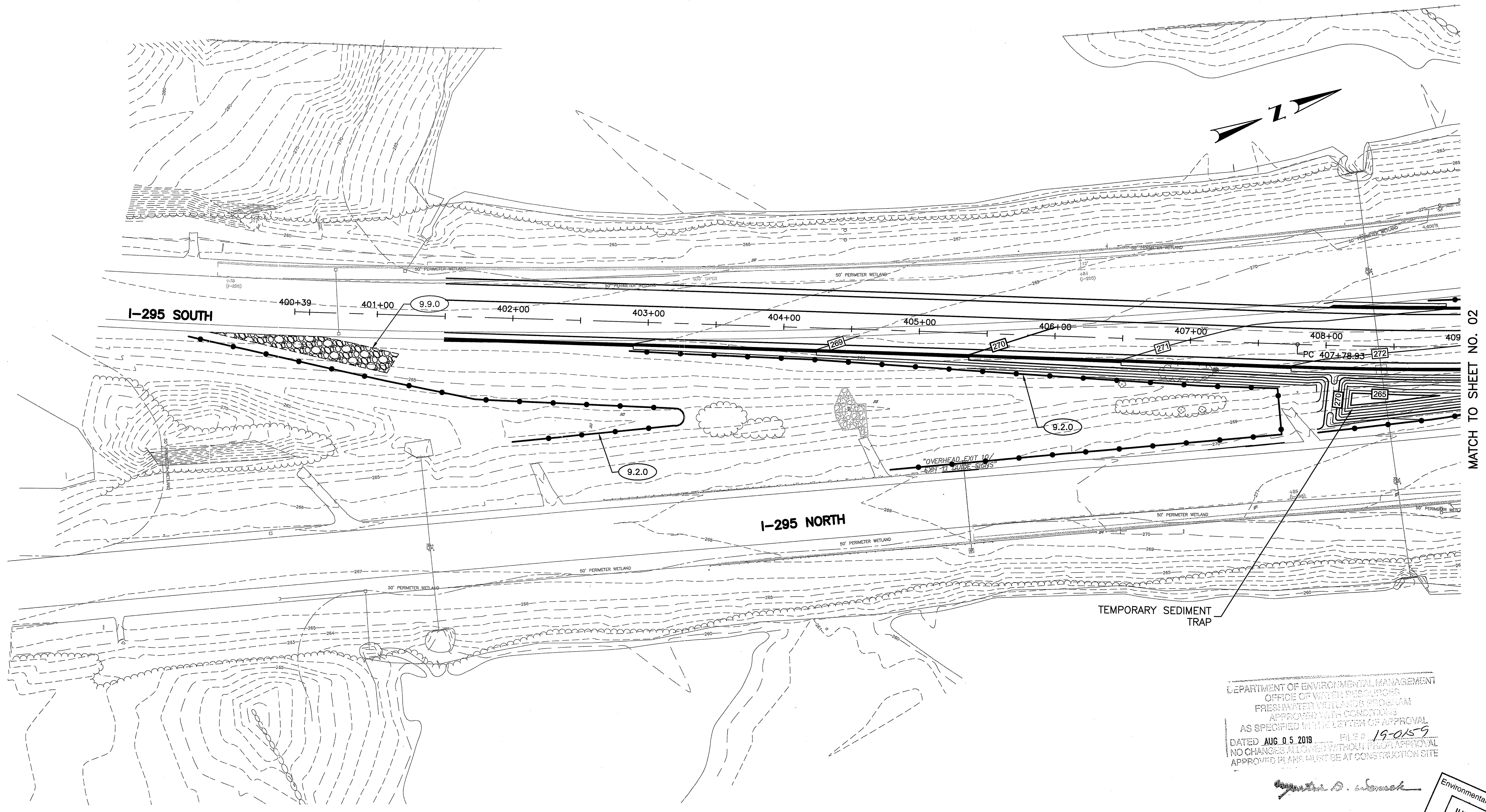
RHODE ISLAND
 DEPARTMENT OF TRANSPORTATION
 REHABILITATION OF
 BRIDGE NOS. 074001 & 074021
 I-295 OVER GREENVILLE AVE
 JOHNSTON, RHODE ISLAND

GENERAL PLAN
 SHEET 5 OF 7

CHECKED BY JDL DATE 4/3/2019 SCALE 1"=20'

Environmental Management
 JUN 11 2019
 Office of Water Resources

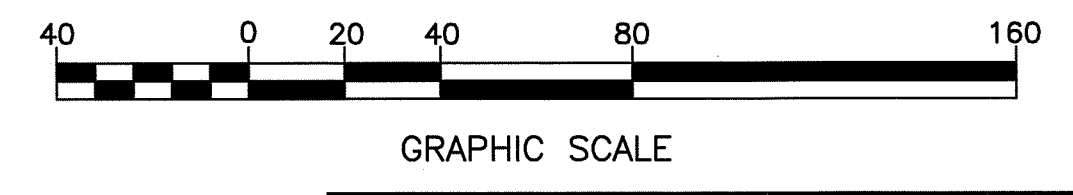
FED. ROAD DIV. NO.	STATE	FEDERAL AID PROJECT NO.	FISCAL YEAR	SHEET NO.	TOTAL SHEETS
	RI	BRO-0740(001)	2018	15	26



MATCH TO SHEET NO. 02

DEPARTMENT OF ENVIRONMENTAL MANAGEMENT
 OFFICE OF WATER RESOURCES
 FRESHWATER WETLANDS PROGRAM
 APPROVED WITH CONDITIONS
 AS SPECIFIED IN THE LETTER OF APPROVAL
 DATED AUG. 05, 2019 FILE # 19-0159
 NO CHANGES ALLOWED WITHOUT FRESH APPROVAL
 APPROVED PLANS MUST BE AT CONSTRUCTION SITE

[Signature]
 Environmental Management
 JUN 11 2019
 Office of Water Resources

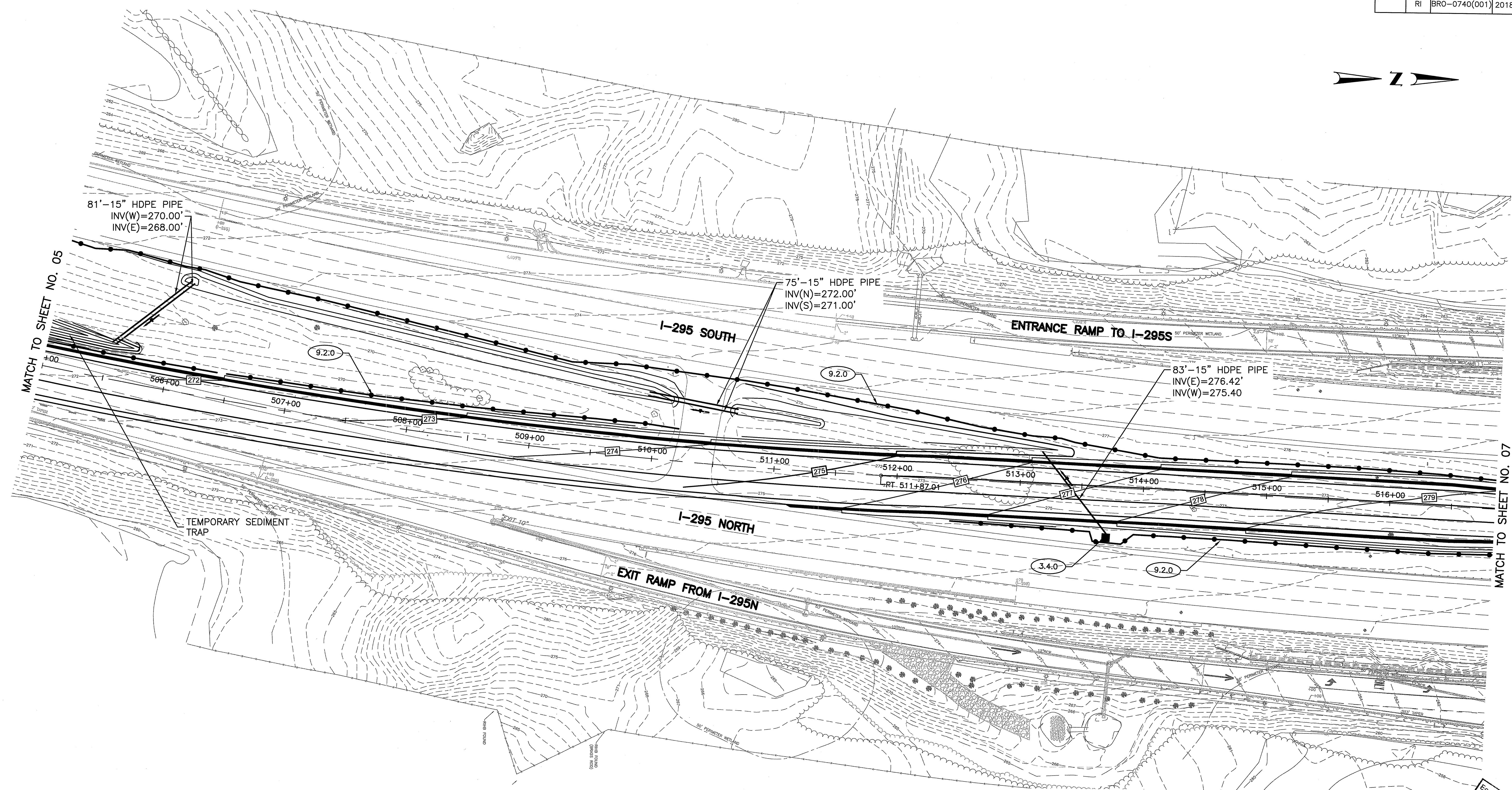


GRAPHIC SCALE
CME ASSOCIATES, INC.
 888-291-3227 | www.cmeengineering.com

REVISIONS	NO.	DATE	BY

RHODE ISLAND
 DEPARTMENT OF TRANSPORTATION
 REHABILITATION OF
 BRIDGE NOS. 074001 & 074021
 I-295 OVER GREENVILLE AVE
 JOHNSTON, RHODE ISLAND
 TEMPORARY DRAINAGE PLAN
 TTC PHASE 2
 SHEET 1 OF 4
 CHECKED BY APJ DATE 4/3/2019 SCALE 1"=40'

FED. ROAD DIV. NO.	STATE	FEDERAL AID PROJECT NO.	FISCAL YEAR	SHEET NO.	TOTAL SHEETS
	RI	BR0-0740(001)	2018	20	26



MATCH TO SHEET NO. 05

MATCH TO SHEET NO. 07

DEPARTMENT OF ENVIRONMENTAL MANAGEMENT
 OFFICE OF WATER RESOURCES
 FRESHWATER WETLANDS PROGRAM
 APPROVED WITH CONDITIONS
 AS SPECIFIED IN THE LETTER OF APPROVAL
 DATED AUG. 0 5 2019 FILE# 19-0159
 NO CHANGES ALLOWED WITHOUT FRM APPROVAL
 APPROVED PLANS MUST BE AT CONSTRUCTION SITE

Signature



GRAPHIC SCALE

CME ASSOCIATES, INC.
 888-291-8227 | www.cmeengineering.com

REVISIONS		
NO.	DATE	BY

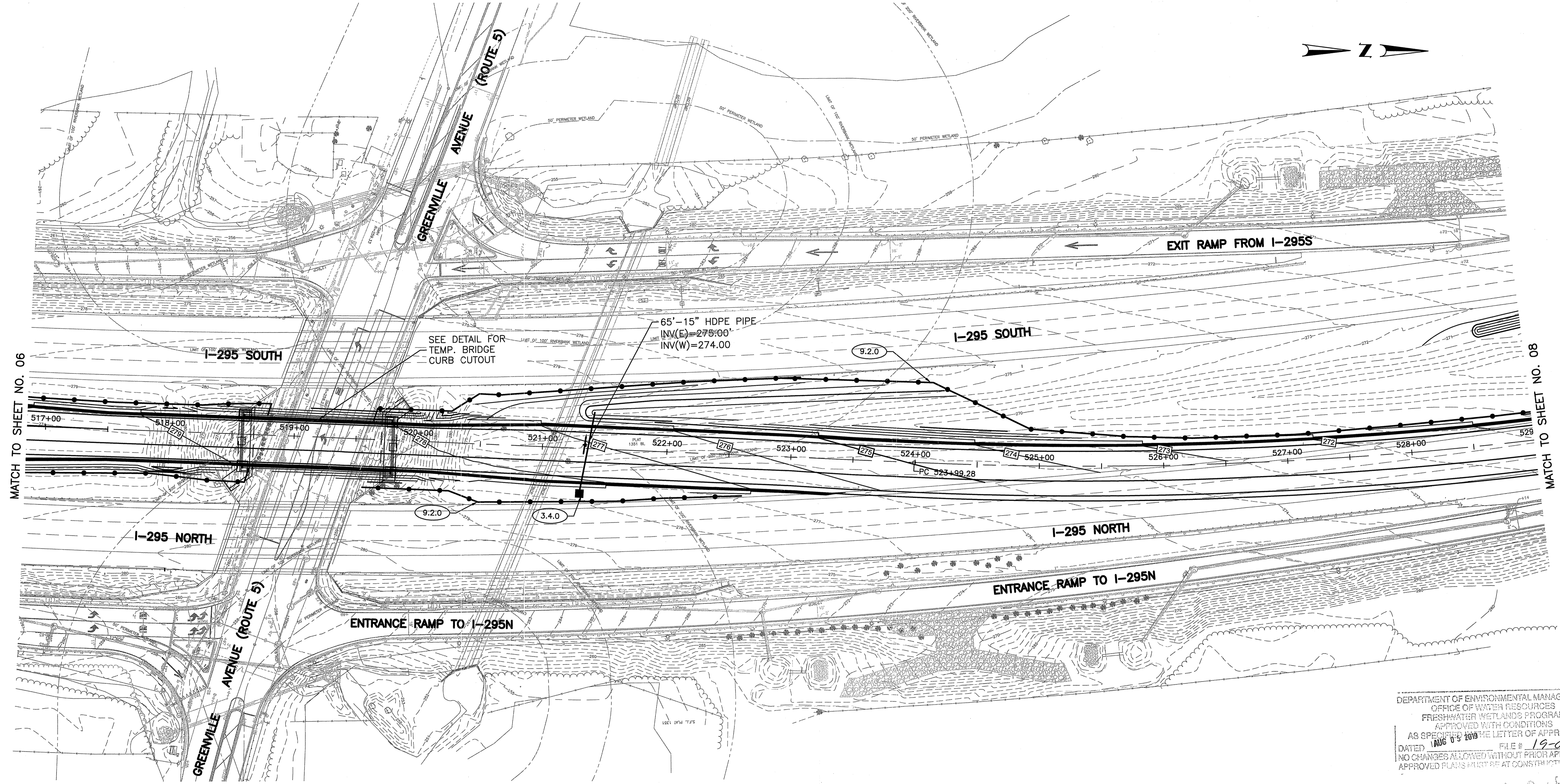
Environmental Management
 JUN 11 2019
 Office of Water Resources

**RHODE ISLAND
 DEPARTMENT OF TRANSPORTATION**

**REHABILITATION OF
 BRIDGE NOS. 074001 & 074021
 I-295 OVER GREENVILLE AVE
 JOHNSTON, RHODE ISLAND**

**TEMPORARY DRAINAGE PLAN
 TTC PHASE 4
 SHEET 2 OF 4**

CHECKED BY APJ DATE 4/3/2019 SCALE 1"=40'

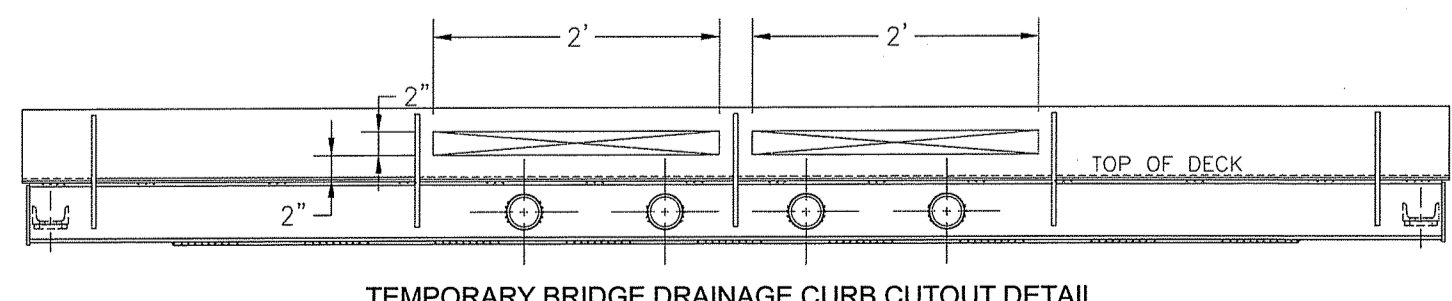


MATCH TO SHEET NO. 06

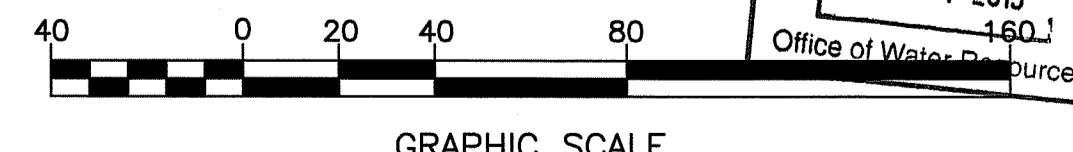
MATCH TO SHEET NO. 08

DEPARTMENT OF ENVIRONMENTAL MANAGEMENT
 OFFICE OF WATER RESOURCES
 FRESHWATER WETLANDS PROGRAM
 APPROVED WITH CONDITIONS
 AS SPECIFIED IN THE LETTER OF APPROVAL
 DATED 10/05/2018 FILE # 19-0159
 NO CHANGES ALLOWED WITHOUT PRIOR APPROVAL
 APPROVED PLANS ONLY TO BE USED AT CONSTRUCTION SITE

Signature



TEMPORARY BRIDGE DRAINAGE CURB CUTOUT DETAIL



CME ASSOCIATES, INC.
 888-291-3227 | www.cmeengineering.com

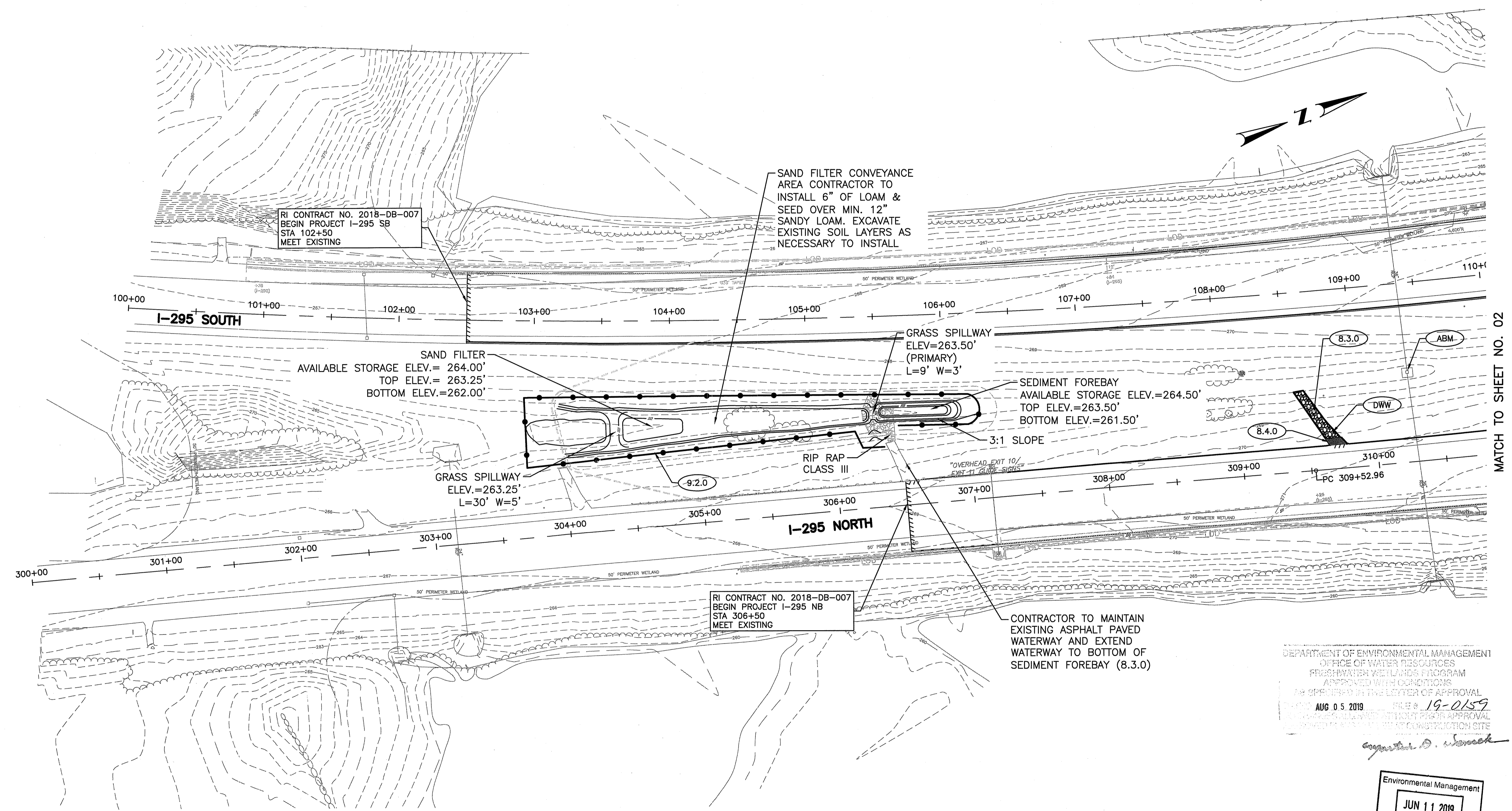
REVISIONS		
NO.	DATE	BY

RHODE ISLAND
DEPARTMENT OF TRANSPORTATION

REHABILITATION OF
BRIDGE NOS. 074001 & 074021
I-295 OVER GREENVILLE AVE
 JOHNSTON, RHODE ISLAND

TEMPORARY DRAINAGE PLAN
TTC PHASE 4
 SHEET 3 OF 4

CHECKED BY APJ DATE 4/3/2019 SCALE 1"=40'

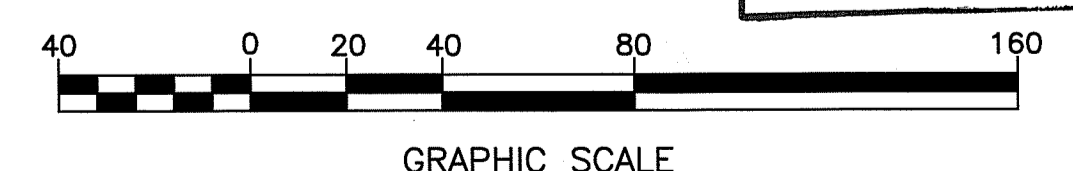


FOR DESIGN AND SPECIFICATIONS OF SAND FILTERS & CHECK DAMS, SEE PLAN SET "I-295/GREENVILLE AVE (RTE. 5) INTERCHANGE, JOHNSTON, RI", ISSUE DATE 10/18/2016, PREPARED BY BETA, IN ASSOCIATION WITH DIPRETE ENGINEERING

DEPARTMENT OF ENVIRONMENTAL MANAGEMENT
 OFFICE OF WATER RESOURCES
 FRESHWATER WETLANDS PROGRAM
 APPROVED WITH CONDITIONS
 AS SPECIFIED IN THE LETTER OF APPROVAL
 AUG 05 2019 FILE # 19-0159
 APPROVAL VALID UNTIL PRIOR APPROVAL
 IS REVOKED AT THE CONSTRUCTION SITE

Signature

Environmental Management
 JUN 11 2019
 Office of Water Resources



CME ASSOCIATES, INC.
 888-291-3227 | www.cmeengineering.com

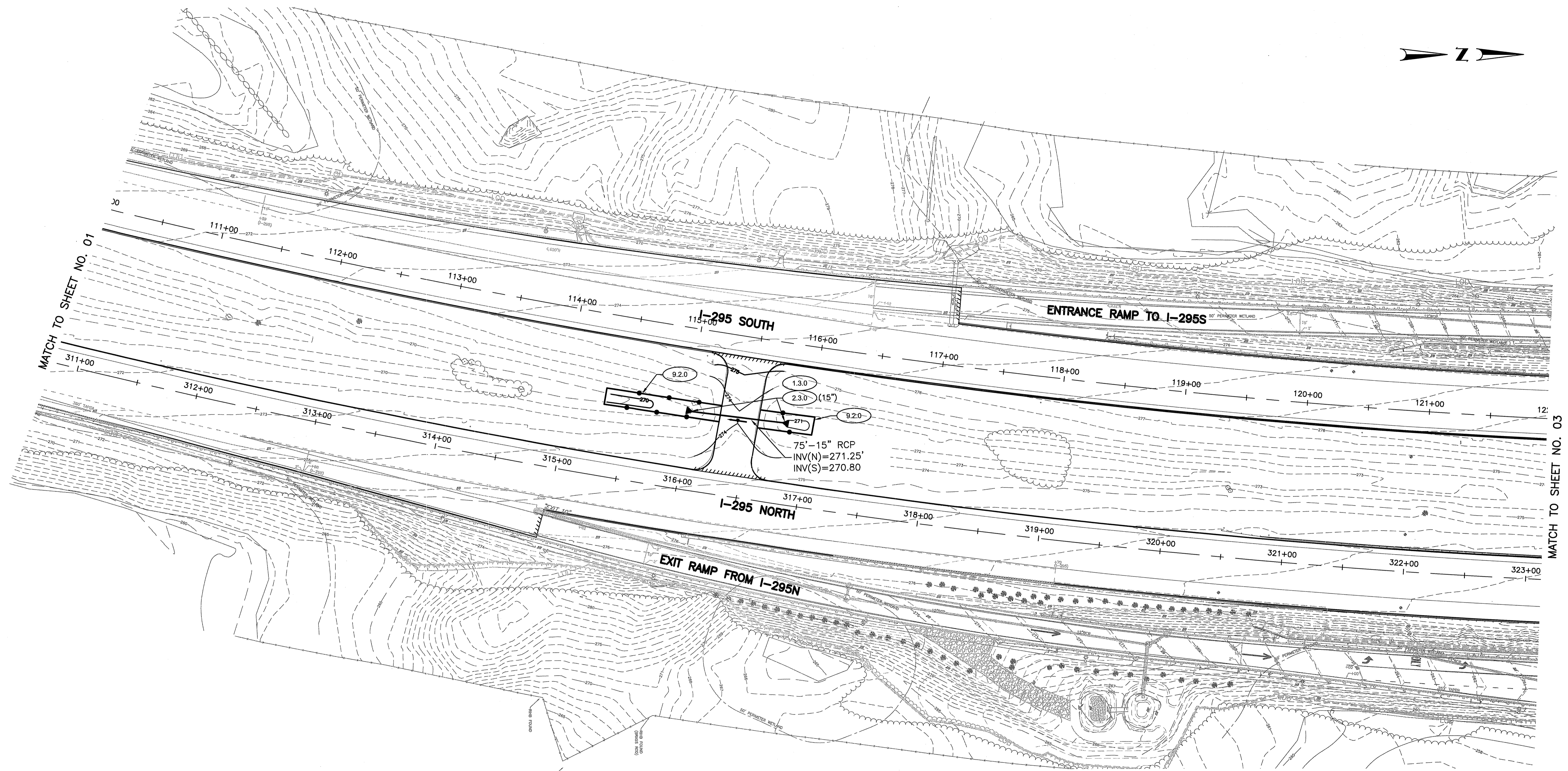
REVISIONS		
NO.	DATE	BY

RHODE ISLAND
 DEPARTMENT OF TRANSPORTATION
 REHABILITATION OF
 BRIDGE NOS. 074001 & 074021
 I-295 OVER GREENVILLE AVE
 JOHNSTON, RHODE ISLAND

DRAINAGE PLAN

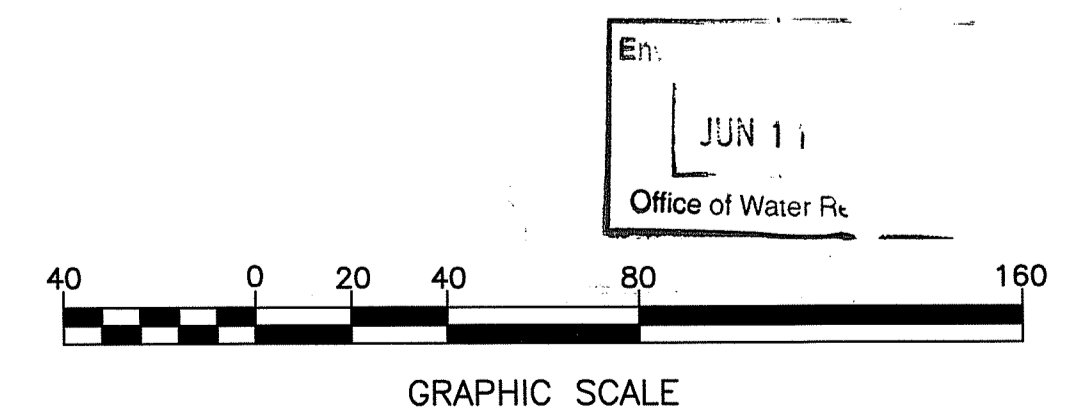
SHEET 1 OF 4

CHECKED BY APJ DATE 4/3/2019 SCALE 1"=40'



DEPARTMENT OF ENVIRONMENTAL MANAGEMENT
 OFFICE OF WATER RESOURCES
 FRESHWATER WETLANDS PROGRAM
 APPROVED WITH CONDITIONS
 AS SPECIFIED IN THE LETTER OF APPROVAL
 DATED AUG 05 2019 FILE # 19-0159
 NO CHANGES ALLOWED WITHOUT PRIOR APPROVAL
 APPROVED PLANS MUST BE AT CONSTRUCTION SITE

Signature



CME ASSOCIATES, INC.
 888-291-3227 | www.cmeengineering.com

REVISIONS		
NO.	DATE	BY

RHODE ISLAND
DEPARTMENT OF TRANSPORTATION

**REHABILITATION OF
 BRIDGE NOS. 074001 & 074021
 I-295 OVER GREENVILLE AVE**

JOHNSTON, RHODE ISLAND

DRAINAGE PLAN

JUN 11 2019
 Office of Water Resources

SHEET 2 OF 4

CHECKED BY APJ DATE 4/3/2019 SCALE 1"=40'

