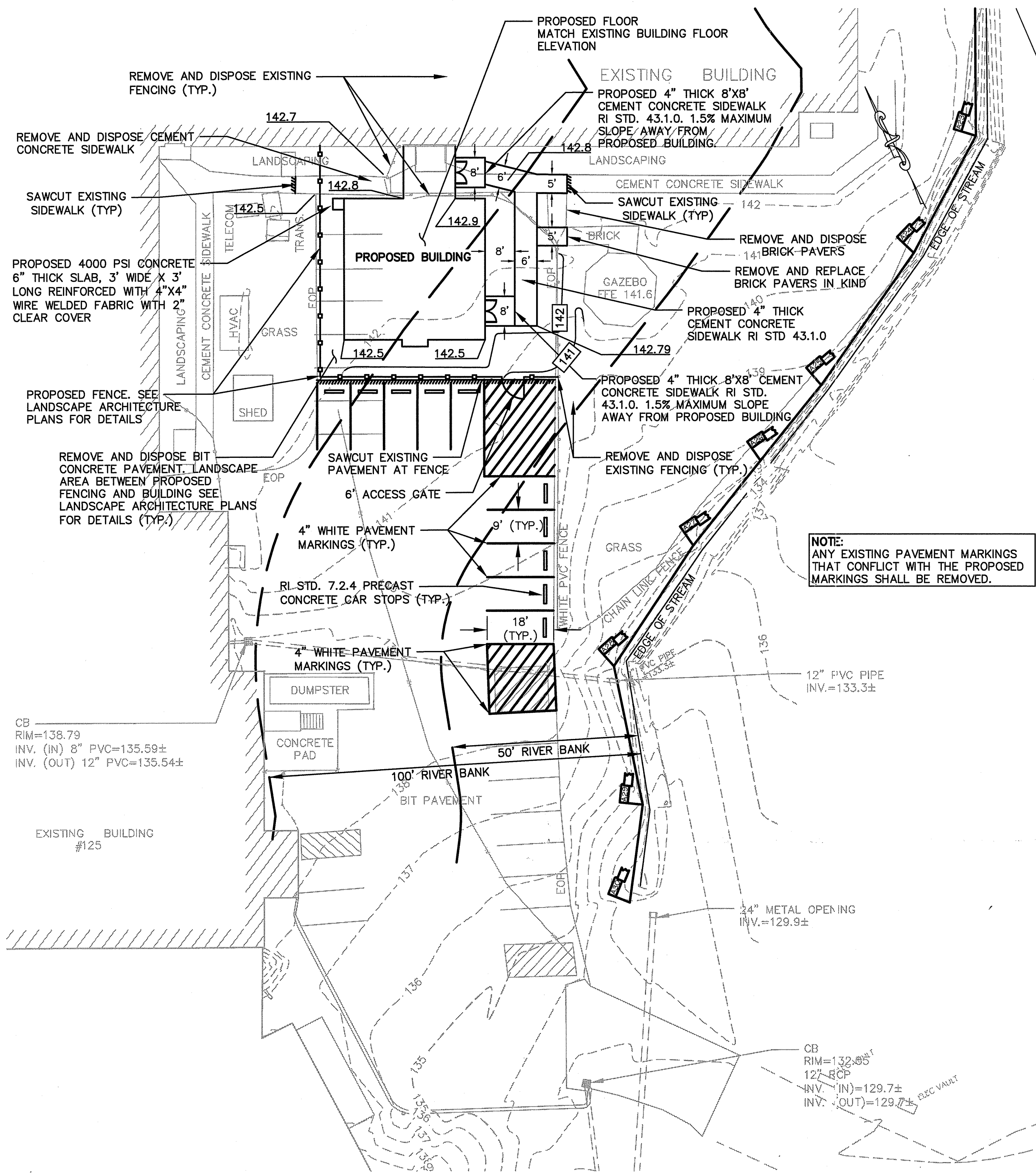


P:\3047\LOWARDO\3047-27 (ALZHEIMER BUILDING)DWG\ALZHEIMER ADDITION.DWG 7/19/19 09:46

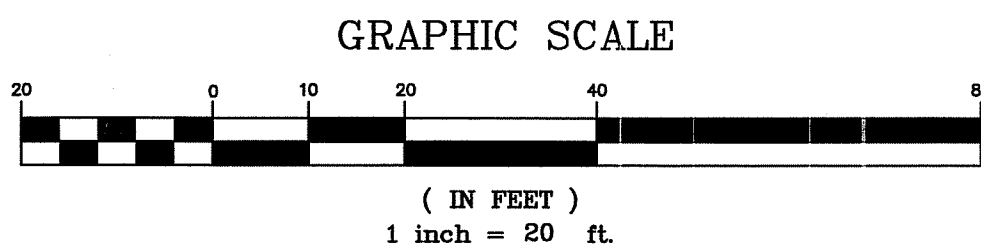


DIG SAFE NOTE
LOCATIONS AND DEPTHS OF EXISTING UTILITIES SHOWN ARE APPROXIMATE ONLY. THE CONTRACTOR SHALL BE RESPONSIBLE TO VERIFY, LOCATE AND PROTECT EXISTING UTILITIES IN THE FIELD WHETHER OR NOT SHOWN ON THE PLANS.

THE CONTRACTOR SHALL CONTACT ALL UTILITY COMPANIES IN ADDITION TO CONTACTING DIG SAFE AT 811 OR 888-DIG-SAFE (888-344-7233) AT LEAST 72 BUSINESS HOURS (3 BUSINESS DAYS) PRIOR TO ANY EXCAVATION AS DEFINED BY RI STATE LAW 39-1.2-1. THIS DOES NOT INCLUDE WEEKENDS AND LEGAL HOLIDAYS. ONCE NOTIFIED, DIG SAFE WILL CONTACT MEMBER UTILITIES TO COME TO THE SITE AND MARK UNDERGROUND UTILITY WIRES, CABLES AND PIPELINES.

DIG SAFE MEMBER UTILITY COMPANIES ARE RESPONSIBLE TO MARK ONLY THE FACILITIES THAT THEY OWN OR MAINTAIN. NON DIG SAFE MEMBER COMPANIES ARE NOT NOTIFIED BY DIG SAFE. NON-MEMBER UTILITIES MAY NOT BE OWNED OR MAINTAINED BY MEMBER UTILITY COMPANIES; THEREFORE THEY ARE UNABLE TO LOCATE THEM. IT IS YOUR RESPONSIBILITY TO INVESTIGATE IF ANY PRIVATELY OWNED OR NON DIG SAFE MEMBER UTILITIES ARE IN THE AREA.

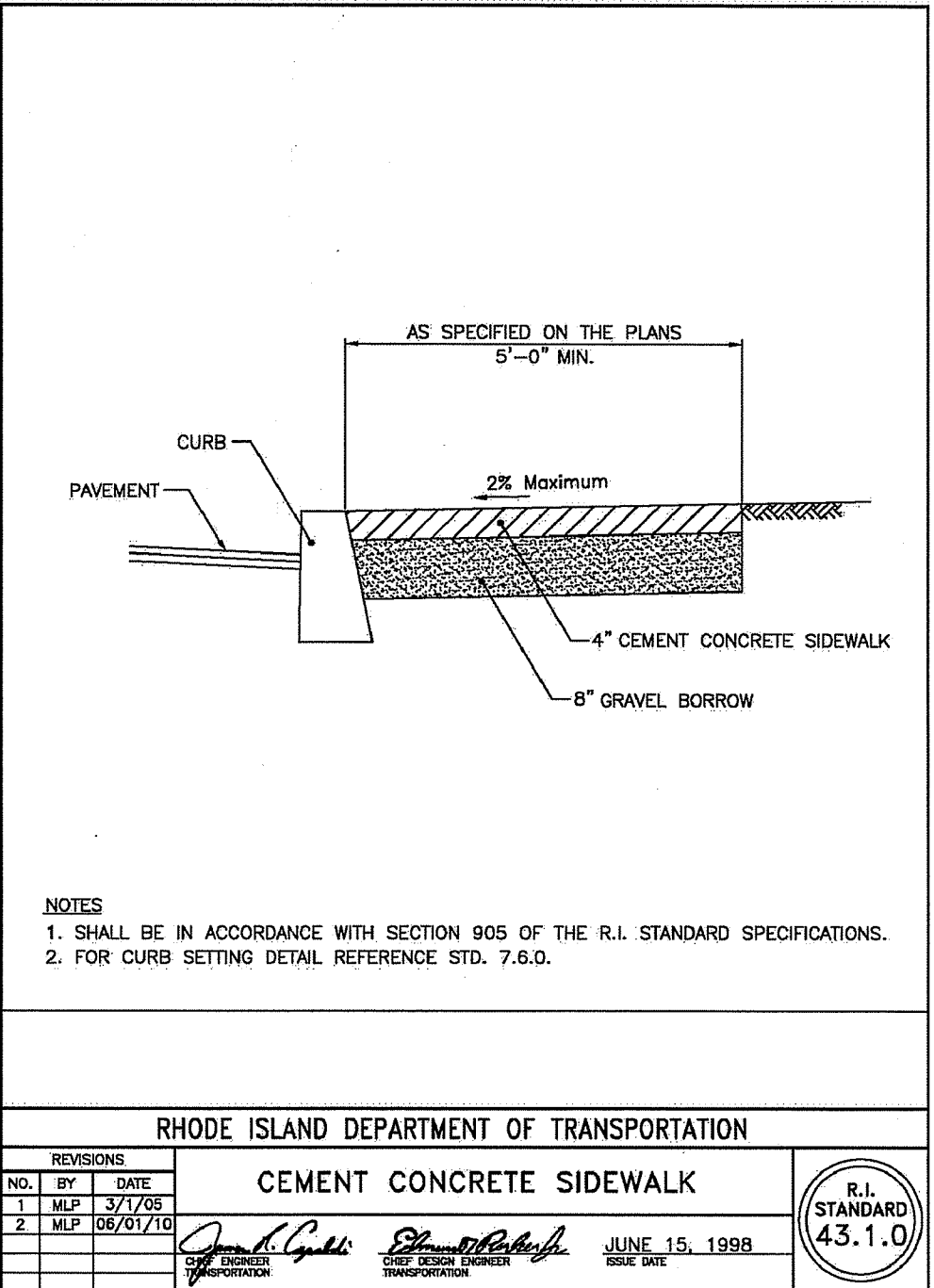
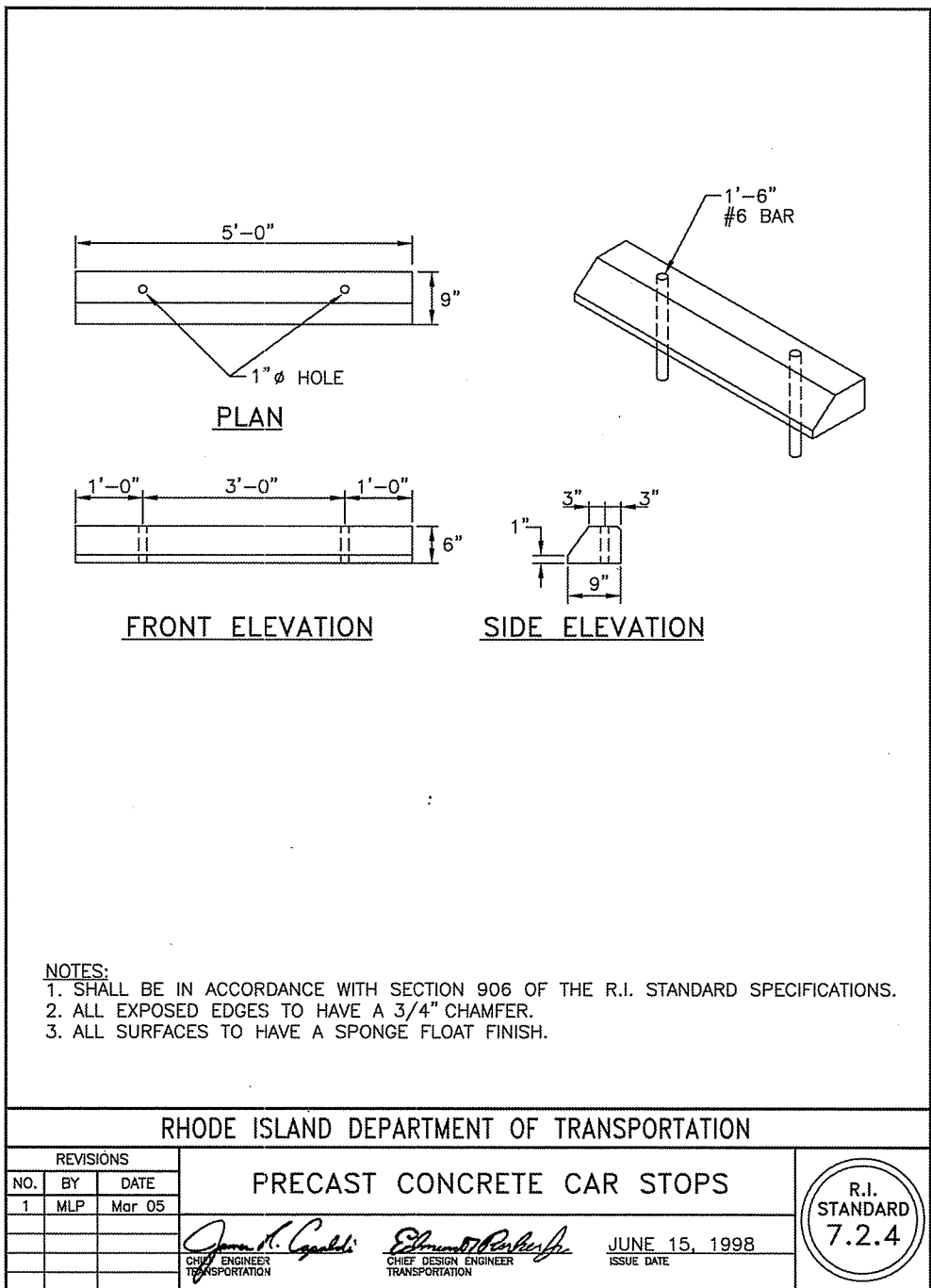
NOTE: REFER TO ARCHITECTURAL PLANS FOR ALL UTILITY CONNECTIONS.



GENERAL NOTES

1. ALL WORK AND MATERIALS SHALL BE IN CONFORMANCE WITH THE RHODE ISLAND STANDARD SPECIFICATIONS, WITH LATEST REVISIONS, THE RHODE ISLAND STANDARD DETAILS, WITH LATEST REVISIONS, THE 2010 AMERICANS WITH DISABILITIES ACT (ADA) STANDARDS FOR ACCESSIBILITY DESIGN, WITH THE LATEST REVISIONS, THE MANUAL OF UNIFORM TRAFFIC CONTROL DEVICES (MUTCD), WITH LATEST REVISIONS, AND THE CURRENT CITY OF CRANSTON REGULATIONS AND REQUIREMENTS.
2. IT SHALL BE THE CONTRACTORS SOLE RESPONSIBILITY TO OBTAIN ANY AND ALL PERMITS REQUIRED FOR THIS WORK INCLUDING BUT NOT LIMITED TO RHODE ISLAND DEPARTMENT OF ENVIRONMENTAL MANAGEMENT AND RHODE ISLAND DEPARTMENT OF TRANSPORTATION AND THE MUNICIPALITY IN WHICH WORK IS BEING PERFORMED PRIOR TO THE START OF ANY WORK.
3. THE CONTRACTOR IS RESPONSIBLE FOR ALL SOIL EROSION AND SEDIMENT CONTROL MEASURES ONSITE. THE CONTRACTOR IS TO NOTIFY THE DESIGN ENGINEER, THE PUBLIC WORKS DIRECTOR, THE CITY ENGINEER & RIDEM, AT LEAST 48 HOURS PRIOR TO COMMENCING CONSTRUCTION ACTIVITIES.
4. THE CONTRACTOR IS RESPONSIBLE FOR DETERMINING FINISHED GRADES AND ENSURING SURFACE WATER FLOWS TOWARDS SEDIMENTATION BARRIERS. ALL EXISTING PAVEMENT ELEVATIONS TO BE FIELD VERIFIED PRIOR TO ANY PAVEMENT ACTIVITIES.
5. ALL CUT AND FILL ACTIVITIES REQUIRING COMPACTION STANDARDS SHALL BE BUILT UNDER THE DIRECTION OF AN ENGINEER AND CERTIFIED TO THE OWNER PRIOR TO COMPLETION OF THE PROJECT.
6. ALL UNDERGROUND UTILITIES AND STORAGE FACILITIES MUST BE AS-BUILT FOR LOCATION AND MEDIA DEPTH.
7. ALL LOAM IN DISTURBED AREAS TO BE STOCKPILED FOR FUTURE USE AND/OR REMOVED OFFSITE TO AN APPROPRIATE FACILITY.
8. ALL EXCESS SOILS, BOULDERS, STUMPS AND OTHER MATERIALS SHALL BE DISCARDED OFFSITE IN AN ACCEPTABLE MANNER TO ALL STATE, AND MUNICIPAL REGULATIONS. ALL MATERIALS THAT ARE REMOVED AND DISPOSED SHALL BE DONE IN A LEGAL MANNER AND FOLLOW THE SOIL EROSION CONTROL PLAN.
9. ANY LOCATION OF CONCRETE WASHING OR EQUIPMENT WASHING OPERATIONS MUST BE APPROVED BY THE OWNER PRIOR TO COMPLETING SUCH ACTIVITIES.
10. CONTRACTOR TO PERFORM DAILY HOUSEKEEPING ONSITE. CONTRACTOR SHALL SWEEP DAILY ANY TRACKING ONTO EXISTING PARKING AREA TO PREVENT FROM ENTERING THE DRAINAGE SYSTEM.
11. ALL GRADING SHALL COMPLY WITH THE CURRENT AMERICANS WITH DISABILITIES ACT ACCESSIBILITY GUIDELINES.
12. IT SHALL BE THE CONTRACTORS SOLE RESPONSIBILITY TO DOCUMENT EXISTING CONDITIONS OF SURROUNDING PROPERTIES AND TO MAINTAIN THE INTEGRITY OF THE SAME. ANY DAMAGE TO AND THE COST OF REPAIR OF UTILITIES, ROADWAYS, STRUCTURES AND SURROUNDING PROPERTY SHALL BE FULLY BORNE BY THE CONTRACTOR.
13. THE CONTRACTOR SHALL BE RESPONSIBLE FOR MAINTENANCE AND PROTECTION OF PEDESTRIAN AND VEHICULAR TRAFFIC INCLUDING POLICE PROTECTION. ALL TEMPORARY CONSTRUCTION SIGNS, BARRICADES AND LANE CLOSURES SHALL BE IN CONFORMANCE WITH THE LATEST "MANUAL OF UNIFORM TRAFFIC CONTROL DEVICES" (MUTCD).
14. THE CONTRACTOR SHALL USE POLICE OFFICERS TO FACILITATE PEDESTRIAN CROSSINGS AS REQUIRED WHEN WORK ZONES IMPACT PEDESTRIAN ROUTES.
15. CONTRACTOR SHALL RESTORE ALL DISTURBED AREAS TO THEIR ORIGINAL CONDITION. ALL DISTURBED LOAMED AREAS SHALL BE 6" LOAMED AND SEEDED UNLESS OTHERWISE NOTED
16. ALL EQUIPMENT, LABORERS, MATERIALS OR WORK ACTIVITIES SHALL BE CONDUCTED FROM THE PRIVATE PROPERTY SIDE OF THE PROJECT SITE.
17. AT NO TIME SHALL THERE BE ANY EQUIPMENT, LABORERS, MATERIALS OR WORK ACTIVITIES WITHIN THE STATE RIGHT-OF-WAY OF SCITUATE AVE.
18. AT NO TIME SHALL THERE BE ANY BLASTING ACTIVITIES.
19. ALL EXISTING UTILITIES ARE FROM VISIBLE INFORMATION, DRAWINGS FROM OTHERS, OR INFORMATION PROVIDED. ALL ELEVATIONS AND LOCATIONS ARE APPROXIMATE ONLY AND SHOULD BE FIELD VERIFIED BY THE CONTRACTOR AND DIGSAFE. THE CONTRACTOR SHALL COORDINATE ALL UTILITIES WITH THE APPROPRIATE UTILITY COMPANIES.
20. THE CONTRACTOR SHALL CONTACT ALL THE UTILITY COMPANIES, THE MUNICIPAL PUBLIC WORKS DEPARTMENT, FIRE DEPARTMENT AND THE DEPARTMENT OF TRANSPORTATION FOR VERIFICATION OF APPROVED LOCATIONS SHOWN HEREON PRIOR TO THE START OF CONSTRUCTION. IF ANY DISCREPANCIES ARE NOTED, THE CONTRACTOR SHALL CONTACT THE ENGINEER IMMEDIATELY FOR A RESOLUTION.
21. THE CONTRACTOR SHALL OBTAIN THE REQUIRED INSPECTION SCHEDULE OF THE MUNICIPALITY, UTILITY COMPANIES AND ALL OTHER REQUIRED PARTIES AND SHALL STRICTLY ADHERE TO THOSE REQUIREMENTS.
22. LOCATIONS AND DEPTHS OF EXISTING UTILITIES SHOWN ARE APPROXIMATE ONLY. THE CONTRACTOR SHALL BE RESPONSIBLE TO VERIFY, LOCATE AND PROTECT EXISTING UTILITIES IN THE FIELD WHETHER OR NOT SHOWN ON THE PLANS.
23. THE CONTRACTOR SHALL CONTACT ALL UTILITY COMPANIES IN ADDITION TO CONTACTING DIG SAFE AT 811 OR 888-DIG-SAFE (888-344-7233) AT LEAST 72 BUSINESS HOURS (3 BUSINESS DAYS) PRIOR TO ANY EXCAVATION AS DEFINED BY RI STATE LAW 39-1.2-1. THIS DOES NOT INCLUDE WEEKENDS AND LEGAL HOLIDAYS. ONCE NOTIFIED, DIG SAFE WILL CONTACT MEMBER UTILITIES TO COME TO THE SITE AND MARK UNDERGROUND UTILITY WIRES, CABLES AND PIPELINES.
24. DIG SAFE MEMBER UTILITY COMPANIES ARE RESPONSIBLE TO MARK ONLY THE FACILITIES THAT THEY OWN OR MAINTAIN. NON DIG SAFE MEMBER COMPANIES ARE NOT NOTIFIED BY DIG SAFE. NON-MEMBER UTILITIES MAY NOT BE OWNED OR MAINTAINED BY MEMBER UTILITY COMPANIES; THEREFORE THEY ARE UNABLE TO LOCATE THEM. IT IS THE CONTRACTOR'S RESPONSIBILITY TO INVESTIGATE IF ANY PRIVATELY OWNED OR NON DIG SAFE MEMBER UTILITIES ARE IN THE AREA.

DEPARTMENT OF ENVIRONMENTAL MANAGEMENT
OFFICE OF WATER RESOURCES
FRESHWATER WETLANDS PROGRAM
APPROVED WITH CONDITIONS
AS SPECIFIED IN THE LETTER OF APPROVAL
DATED OCT 1 2019 FILE #19-0240
NO CHANGES ALLOWED WITHOUT PRIOR APPROVAL
APPROVED PLANS MUST BE AT CONSTRUCTION SITE
Nancy L. Feltman



This drawing is copyrighted and is subject to copyright protection as an "architectural work" under 17 U.S.C. Sec.101 et seq. The protection includes but is not limited to the overall form as well as the arrangement and composition of spaces, materials, color and elements in the design. Under such protection, unauthorized use of this drawing may result in the creation of construction or building being noted and/or monetary compensation being awarded to The Thomas Lomardo & Associates a corporation (T.L.A.). © T.L.A. 2017
Any reproduction, possession, or use of this drawing or any part thereof without the express written permission of T.L.A. is prohibited. Violators will be prosecuted to the full extent of the law.

THOMAS LONARDO & ASSOCIATES INC.
INTERIOR DESIGNERS PLANNERS
80 Alwood Avenue Cranston Rhode Island 02920
t-401.944.2600 f-401.944.2601 www.tlarcchitects.com

RA CATALDO & ASSOCIATES INC.
CIVIL ENGINEERS
LAND SURVEYORS
114 SMITHFIELD AVENUE
PAWTUCKET, RI 02860
(401) 453-3300
FAX: (401) 453-4117
cataldo@ra-cataldo.com

PROJECT
THE CEDARS
ALZHEIMER'S BUILDING ADDITION
125 SCITUATE AVENUE
CRANSTON, RHODE ISLAND 02921

Drawn by GAP
Checked by RWC
Revised on

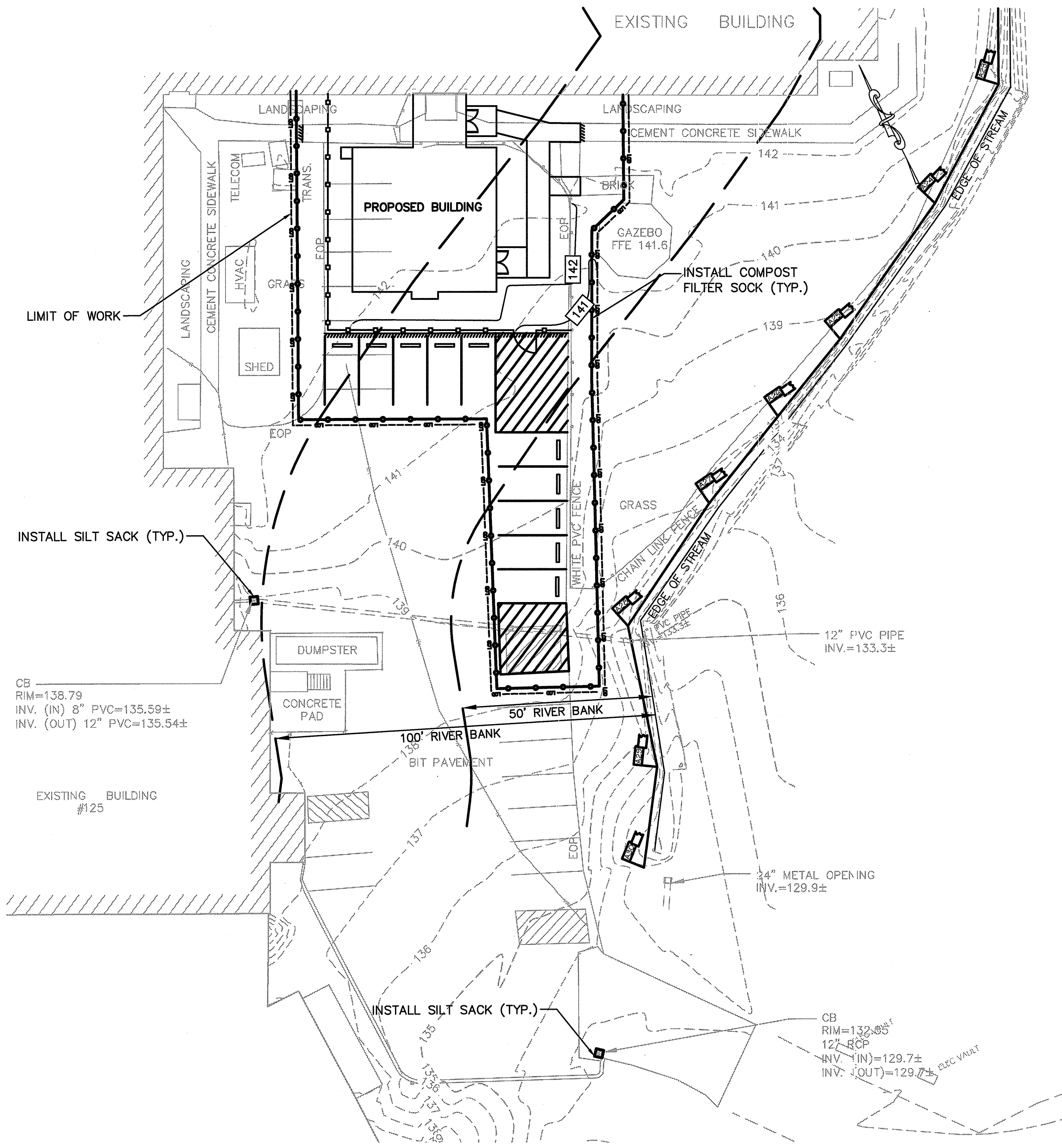
RONALD W. CATALDO
REGISTERED PROFESSIONAL ENGINEER (CIVIL)
1919

Drawing Status
PERMIT DRAWINGS

Issued On 7/19/2019
Sheet Contents
General Plan

Project Number. 1724
Drawing No.
C-1.0
Sheet 2 of 21

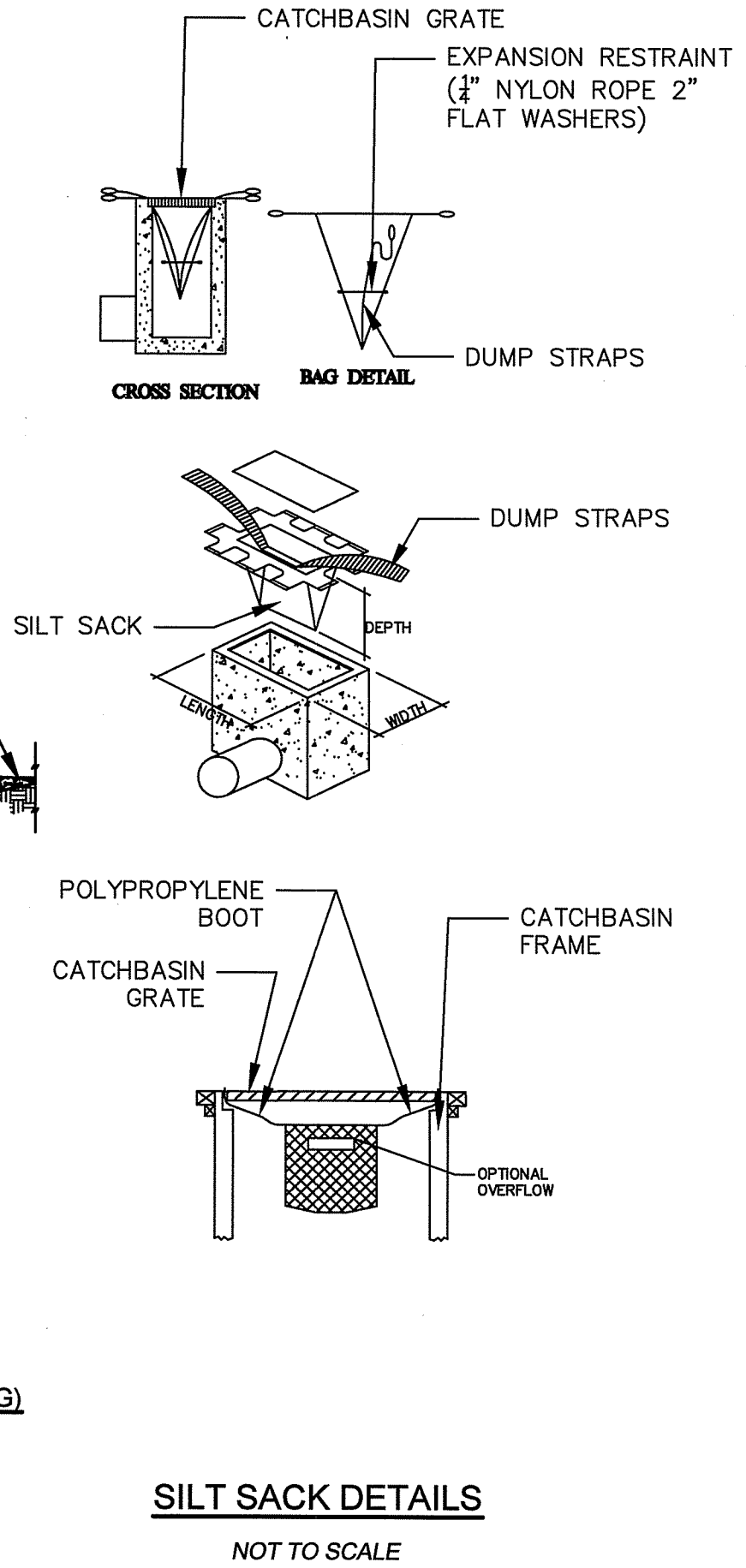
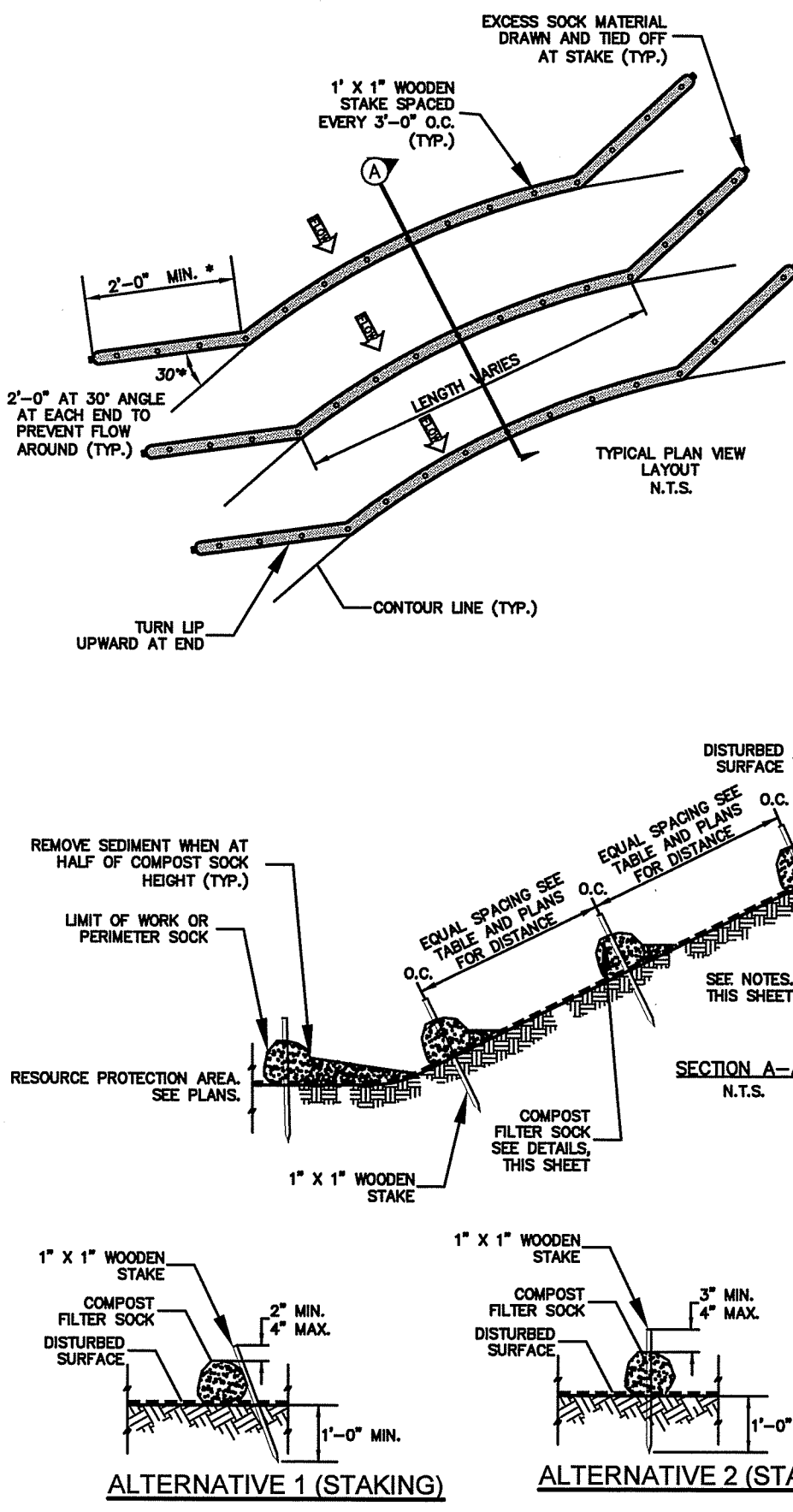
P:\3047(LONARDO)\3047-27 (ALZHEIMER'S BUILDING)\DWG\ALZHEIMER ADDITION.DWG 7/19/19 09:46



COMPOST FILTER SOCK GENERAL NOTES

1. FILTER SOCKS CAN BE PLACED AT THE TOP, ON THE FACE, AND AT THE TOE OF SLOPES AS SEDIMENT-TRAPPING DEVICES FOR SHEET FLOW RUNOFF AND SEDIMENT PER THESE NOTES AND COMPOST FILTER SOCK DETAILS, PLANS AND SPECIFICATIONS.
2. PLACE FILTER SOCKS ON SLOPES ALONG OR AROUND CONTOUR. FILTER SOCKS APPLIED AT TOE OF A SLOPE SHOULD BE PLACED AT EDGE OF TOE TO PROVIDE SEDIMENT STORAGE. THE MAXIMUM DRAINAGE AREA IS 1/4 ACRE PER 100LF OF 12 INCH DIAMETER FILTER SOCK.
3. FOR DITCH APPLICATIONS, MINIMUM INSTALLED HEIGHT OF SINGLE SOCK NOMINALLY. SOCKS ARE PLACED PERPENDICULAR TO FLOW OF WATER. FILTER SOCKS SHALL CONTINUE UP SIDE SLOPES TO TOP OF BANK OR MAXIMUM 3 FEET ABOVE INSTALLED HEIGHT. FILTER SOCKS SHALL REMAIN IN PLACE UNTIL ALL UPSTREAM AREAS ARE PERMANENTLY STABILIZED AND REMAIN AT ENGINEER'S DISCRETION.
4. FILTER SOCKS ARE TYPICALLY SUPPLIED AND INSTALLED IN 8, 12 AND 18 DIAMETERS. DIAMETER TOLERANCE IS 2 INCHES, AS FILTER SOCKS TEND TO FLATTEN OUT WHEN PLACED.
5. REMOVE SEDIMENT FROM BEHIND THE FILTER SOCK ONCE THE SEDIMENT ACCUMULATES TO ONE-HALF OF THE ORIGINAL HEIGHT OF THE FILTER SOCK.
6. INSPECT FILTER SOCKS AFTER EACH RUNOFF EVENT. REMOVE AND REPLACE IF SIGNS OF UNDERCUTTING OR DOWNSTREAM RILLS ARE OBSERVED.
7. FILTER SOCKS SHOULD BE REMOVED FROM SLOPES AFTER STABILIZATION IS COMPLETE UNLESS DIRECTED TO LEAVE IN PLACE BY ENGINEER.
8. REMOVAL SHALL BE ACCOMPLISHED BY CUTTING SOCK OPEN AND SPREADING THE FILL MATERIAL ON THE SITE. ALL NON-BIODEGRADABLE MATERIALS SHALL BE REMOVED. FILTER SOCKS APPLIED IN DITCHES SHALL BE COMPLETELY REMOVED ONCE VEGETATION IS ESTABLISHED OR DIRECTED OTHERWISE BY ENGINEER.

Compost Filter Sock: Slope, Sock Spacing, and Sock Diameter		
Slope	Spacing (ft)	Sock Diameter (inches)
< 50:1	250	8
50:1 - 10:1	125	12
10:1 - 5:1	100	12
3:1 - 2:1	50	18
> 2:1	25	18

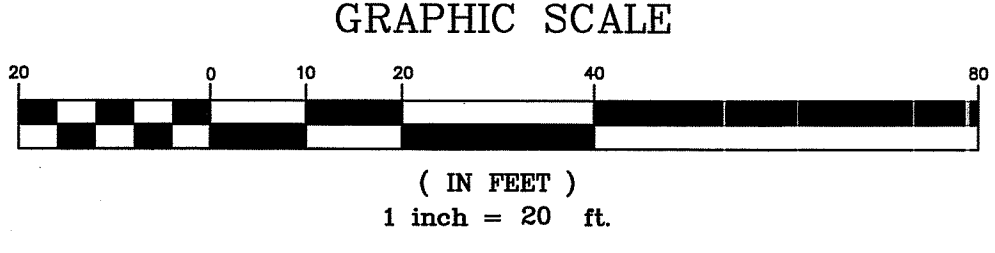


DIG SAFE NOTE

LOCATIONS AND DEPTHS OF EXISTING UTILITIES SHOWN ARE APPROXIMATE ONLY. THE CONTRACTOR SHALL BE RESPONSIBLE TO VERIFY, LOCATE AND PROTECT EXISTING UTILITIES IN THE FIELD WHETHER OR NOT SHOWN ON THE PLANS.

THE CONTRACTOR SHALL CONTACT ALL UTILITY COMPANIES IN ADDITION TO CONTACTING DIG SAFE AT 811 OR 888-DIG-SAFE (888-344-7233) AT LEAST 72 BUSINESS HOURS (3 BUSINESS DAYS) PRIOR TO ANY EXCAVATION AS DEFINED BY RI STATE LAW 39-12-1. THIS DOES NOT INCLUDE WEEKENDS AND LEGAL HOLIDAYS. ONCE NOTIFIED, DIG SAFE WILL CONTACT MEMBER UTILITIES TO COME TO THE SITE AND MARK UNDERGROUND UTILITY WIRES, CABLES AND PIPELINES.

DIG SAFE MEMBER UTILITY COMPANIES ARE RESPONSIBLE TO MARK ONLY THE FACILITIES THAT THEY OWN OR MAINTAIN. NON DIG SAFE MEMBER COMPANIES ARE NOT NOTIFIED BY DIG SAFE. NON-MEMBER UTILITIES MAY NOT BE OWNED OR MAINTAINED BY MEMBER UTILITY COMPANIES; THEREFORE THEY ARE UNABLE TO LOCATE THEM. IT IS YOUR RESPONSIBILITY TO INVESTIGATE IF ANY PRIVATELY OWNED OR NON DIG SAFE MEMBER UTILITIES ARE IN THE AREA.



DEPARTMENT OF ENVIRONMENTAL MANAGEMENT
OFFICE OF WATER RESOURCES
FRESHWATER WETLANDS PROGRAM
APPROVED WITH CONDITIONS
AS SPECIFIED IN THE LETTER OF APPROVAL
DATED OCT 1 2019 FILE # 19-0240
NO CHANGES ALLOWED WITHOUT PRIOR APPROVAL
APPROVED PLANS MUST BE AT CONSTRUCTION SITE

Nancy L. Freeman

This drawing is copyrighted and is subject to copyright protection as an "architectural work" under 17 U.S.C. Section 101 et seq. The protection includes but is not limited to the overall form as well as the arrangement and composition of spaces, materials, color and elements in the design. Under such protection, unauthorized use of this drawing may result in the cessation of construction or buildings being seized and/or monetary compensation being awarded to The Thomas L. Londero & Associates a corporation (T.L.A.) 8/14/2017

Any reproduction, possession, or use of this drawing or any part thereof without the express written permission of T.L.A. is prohibited. Violators will be prosecuted to the full extent of the law.

C

RA CATALDO & ASSOCIATES INC.
CIVIL ENGINEERS
LAND SURVEYORS

114 SMITHFIELD AVENUE
PAWTUCKET, RI 02860
(401) 453-3300
FAX: (401) 453-4117
cat@raclaw.com

THOMAS LONARDO + ASSOCIATES INC.
INTERIOR DESIGNERS PLANNERS

80 Alwood Avenue Cranston Rhode Island 02920
t:401.344.2600 f:401.344.2601 www.tlarchitects.com

PROJECT

THE CEDARS
ALZHEIMER'S BUILDING ADDITION
125 SCITUATE AVENUE
CRANSTON, RHODE ISLAND 02921

Drawn by GAP
Checked by RWC

Revised on

RONALD W. CATALDO

No. 19140

REGISTERED
PROFESSIONAL ENGINEER
(CIVIL)

Drawing Status
PERMIT DRAWINGS

Issued On 7/19/2019

Sheet Contents
Erosion Control
Plan

Project Number 1724

Drawing No.

C-1.2

Sheet 3 of 21