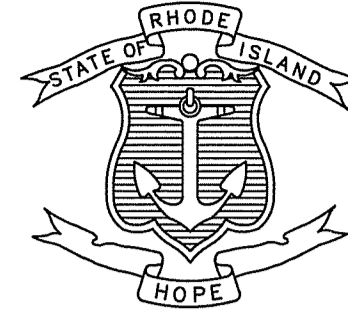


INDEX

SHEET NO.	DESCRIPTION
1	COVER SHEET
2	STANDARD PLAN SYMBOLS AND STANDARD LEGEND
3-4	STANDARD NOTES - 1&2
5	JOB SPECIFIC LEGEND, NOTES AND MISCELLANEOUS DETAILS
6	SITE 1, JOHNSTON - LOCATION 2a

STATE OF RHODE ISLAND



DEPARTMENT OF TRANSPORTATION

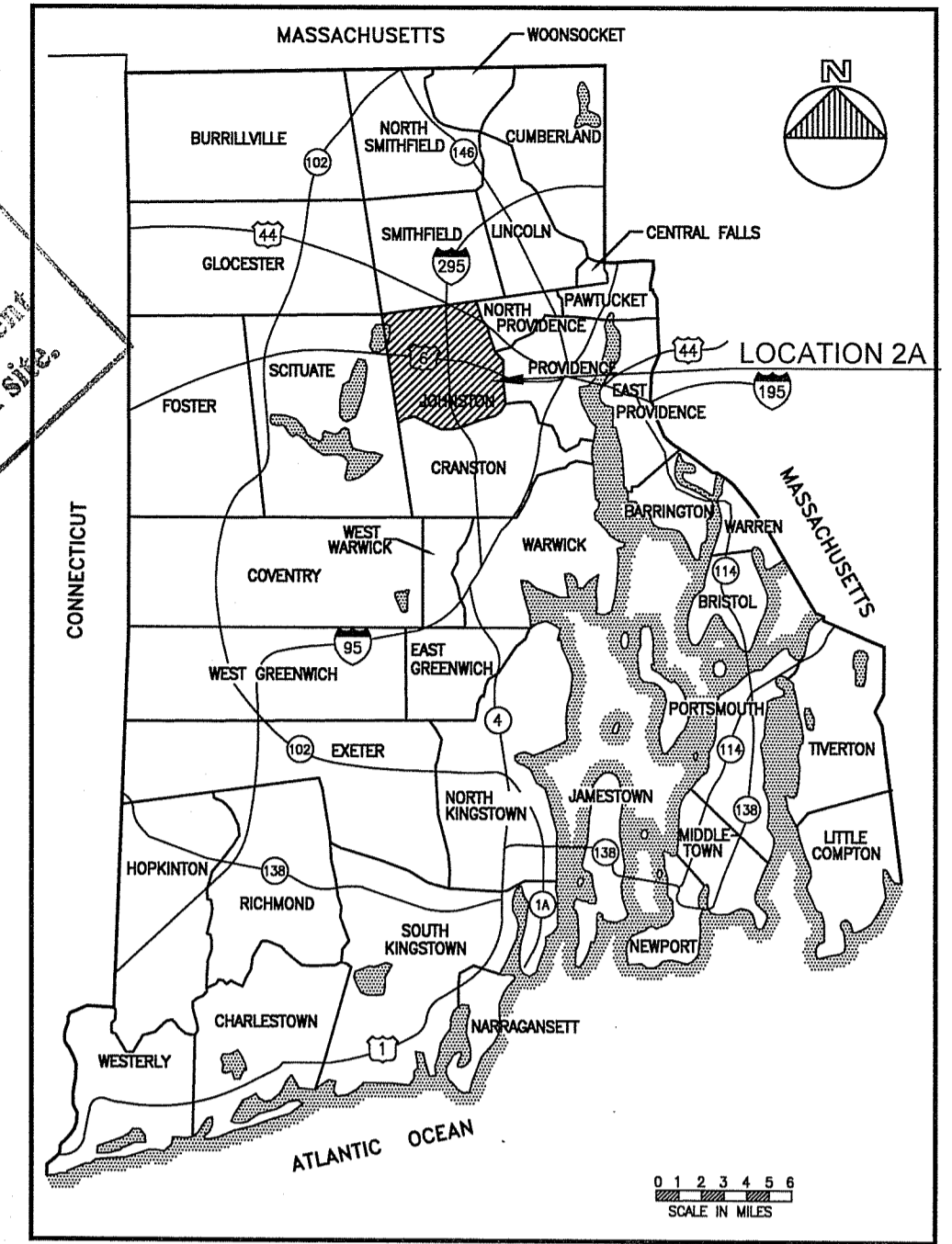
PLAN OF PROPOSED
**2019 STATEWIDE DRAINAGE
 REPAIRS C-1**
 GREENVILLE AVE. (JOHNSTON)

R.I. STANDARD SPECIFICATIONS AND STANDARD DETAILS

SPECIFICATIONS TO GOVERN THIS PROJECT ARE THE R.I. STANDARD SPECIFICATIONS FOR ROAD AND BRIDGE CONSTRUCTION, AMENDED MARCH 2018, WITH ALL REVISIONS AND THE STATE AND FEDERAL SPECIAL PROVISIONS INCLUDED IN THE CONTRACT DOCUMENTS. STANDARD DETAILS FOR THIS PROJECT ARE R.I. STANDARD DETAILS, AMENDED MARCH 2018, WITH ALL REVISIONS.

R.I. CONTRACT NO. 2019-EH-012 F.A. PROJECT NO. _____

FED. ROAD DIV. NO.	STATE	FEDERAL AID PROJECT NO.	FISCAL YEAR	SHEET NO.	TOTAL SHEET
1	R.I.	XXX-XXXX(XXX)	2020	1	6

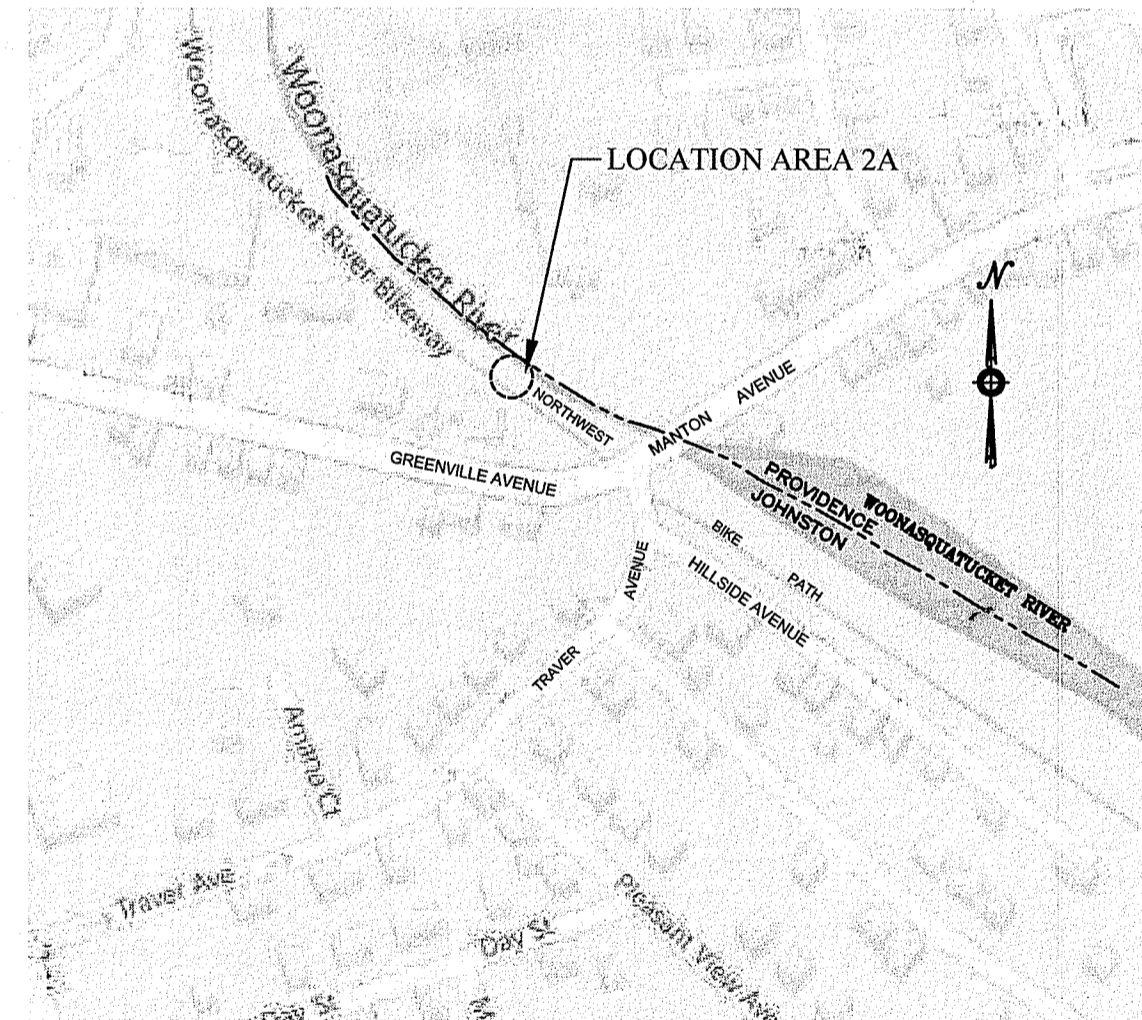


Kindly be advised that this Permit is not equivalent to a verification of the type or extent of freshwater wetlands on site.

LOCATION MAP

HURRICANE EVACUATION ROUTE

This project includes work on a designated Hurricane Evacuation and Diversionary Route(s) as follows:
 - Route 1 in Narragansett.
 - Smith Street in North Providence.
 - Refer to General Note 18 on Sheet 3.



GREENVILLE AVENUE - JOHNSTON, R.I.

(LOCATION 2a)
 SEE PLAN SHEET 6

LAYOUT PLAN
 1" = 300'

SCALES OF DRAWINGS
 AS NOTED

BASE OF LEVELS
 Vertical Datum Used - NAVD 88
 Horizontal Datum and Epoch Used - NAD83 (2011) (2010.00)



RIDEM SUBMISSION
 (REVISED NOVEMBER 5, 2019)

DEPARTMENT OF ENVIRONMENTAL MANAGEMENT
 OFFICE OF WATER RESOURCES
 FRESHWATER WETLANDS PROGRAM
 APPROVED WITH CONDITIONS
 AS SPECIFIED IN THE LETTER OF APPROVAL
 DATED FEB 2 8 2020 FILE # 19-0304
 NO CHANGES ALLOWED WITHOUT PRIOR APPROVAL
 APPROVED PLANS MUST BE AT CONSTRUCTION SITE



Contract Number 2019-XX-XXXX
 Number of Sheet 1
 Total Sheets 6

FED. ROAD DIV. NO.	STATE	FEDERAL AID PROJECT NO.	FISCAL YEAR	SHEET NO.	TOTAL NO.
1	R.I.	xxx-xxxx(xxx)	2020	4	6

LANDSCAPE NOTES:

1. ALL PLANT MATERIAL MUST BE TAGGED AT THE NURSERY (A RECOGNIZED GROWER OF PLANT MATERIAL) IN ACCORDANCE WITH THE R.I.D.O.T. STANDARD SPECIFICATIONS, LATEST EDITION. ALL PLANT MATERIAL MUST BE NURSERY GROWN; NO PLANTATION GROWN PLANT MATERIAL WILL BE ACCEPTED.
2. ALL PLANT SUBSTITUTIONS AND/OR CHANGES IN PLANT LOCATION MUST BE APPROVED IN ACCORDANCE WITH THE R.I.D.O.T. STANDARD SPECIFICATIONS, LATEST EDITION.
3. ALL PLANT MATERIAL IS TO BE FIELD LOCATED BY A REPRESENTATIVE FROM THE R.I.D.O.T. LANDSCAPE ARCHITECTURE UNIT.
4. A R.I.D.O.T. LANDSCAPE REPRESENTATIVE MUST BE ON SITE TO APPROVE ALL TRIMMING AND CLEARING NECESSARY TO COMPLETE THE WORK AS SHOWN ON THE PLANS.
5. ANY TOPSOIL USED AS PLANTABLE SOIL SHALL HAVE A SANDY LOAM TEXTURE RELATIVELY FREE OF SUBSOIL MATERIAL, STONES, ROOTS, LUMPS OF SOIL, TREE LIMBS, TRASH OR CONSTRUCTION DEBRIS, AND SHALL CONFORM TO SECTION M.18 OF THE R.I.D.O.T. STANDARD SPECIFICATIONS, LATEST EDITION.
6. ALL TREES AND SHRUBS SHALL BE MULCHED WITH PINE BARK MULCH IN ACCORDANCE WITH THE R.I.D.O.T. STANDARD SPECIFICATIONS, LATEST EDITION.
7. ALL TREES AND/OR SHRUBS THAT ARE PLANTED AS A BED SHALL BE MULCHED AS A BED.
8. PROVIDE A MINIMUM 6"-8" BRANCHING STANDARD ON ALL TREES INSTALLED ADJACENT TO SIDEWALKS AND/OR PEDESTRIAN ACCESS AREAS.

STRUCTURAL NOTES FOR HIGHWAY SIGNS, LUMINAIRES AND TRAFFIC SIGNALS:

GENERAL

1. ALL SUPPORT DESIGNS AND ASSOCIATED SHOP DRAWING REVIEWS SHALL BE IN CONFORMANCE WITH THE LATEST EDITION, OF THE AASHTO STANDARD SPECIFICATIONS FOR STRUCTURAL SUPPORTS FOR HIGHWAY SIGNS, LUMINAIRES AND TRAFFIC SIGNALS (THE "SPECIFICATIONS"), INCLUDING THE LATEST INTERIM SPECIFICATIONS, EXCEPT AS MODIFIED HEREIN.

CONSTRUCTION DRAWINGS AND DETAILS

1. THE FOLLOWING NOTES SHALL BE INCLUDED ON ALL PLANS AND/OR SHOP DRAWINGS IN REFERENCE TO ANCHOR BOLTS:
 - "PRETENSIONING OF ALL ANCHOR NUTS IS REQUIRED, AND SHALL BE ACCOMPLISHED BY TIGHTENING TO 1/6TH TURN BEYOND THE SNUG-TIGHT POSITION."
 - "THE MAXIMUM CLEARANCE BETWEEN THE BOTTOM OF THE LEVELING NUTS AND THE TOP OF THE CONCRETE IS CRITICAL AND SHALL NOT EXCEED THE AMOUNT SPECIFIED ON THIS DRAWING."
2. THE USE OF GROUT UNDER BASE PLATES SHALL GENERALLY NOT BE PERMITTED. IF SPECIFIC CONDITIONS WARRANT ITS USE, THE GROUT SHALL NOT BE CONSIDERED LOAD CARRYING; LOADS SHALL BE DIRECTLY SUPPORTED BY THE ANCHOR BOLTS. ADEQUATE DRAINAGE SHALL BE PROVIDED.
3. THE DAMPENING EFFECTS OF VIBRATION MITIGATION DEVICES SHALL NOT BE CONSIDERED IN THE DESIGN OF STRUCTURAL SUPPORTS FOR SIGNS AND TRAFFIC SIGNALS. IF THE CONTRACTOR CHOOSES TO USE THESE DEVICES FOR WARRANTY PURPOSES, THE TYPE OF DEVICES PROPOSED SHALL BE APPROVED BY THE DEPARTMENT PRIOR TO FABRICATION OF SUPPORTS.

TRAFFIC SIGNAL NOTES:

1. ALL SALVAGED TRAFFIC SIGNAL EQUIPMENT SHALL BE DELIVERED TO THE R.I.D.O.T. MAINTENANCE HEADQUARTERS, 360 LINCOLN AVENUE, WARWICK, RHODE ISLAND, 02888.
2. BACK PLATES SHALL BE INSTALLED ON ALL TRAFFIC SIGNAL HEADS.
3. THE CONTRACTOR SHALL SUPPLY AND INSTALL ON THE UPPER LEFT HAND CORNER OF THE BACK OF THE CONTROLLER CABINET DOOR A LAMINATED INTERSECTION GRAPHIC AND TABLE DEPICTING THE TRAFFIC DETECTOR RELAY CHANNEL ASSIGNMENTS. THE DIAGRAM SHALL BE A GRAPHIC OF THE INDIVIDUAL INTERSECTION ORIENTED SIMILAR TO THE PLANS SHOWING THE LOCATIONS OF EACH OF THE LOOP DETECTORS. THE DIAGRAM SHALL, AT A MINIMUM, INCLUDE DETECTOR NUMBERS, STREET NAME LABELS, NORTH ARROW, AND CONTROLLER CABINET LOCATION. THE ASSIGNMENT INFORMATION SHALL BE INCLUDED IN A TABLE WHICH SHALL INCLUDE, AT A MINIMUM, THE APPROACH NAME, DETECTOR NUMBER, TERMINAL NUMBER, DETECTOR RACK SLOT NUMBER, RELAY NUMBER, RELAY CHANNEL NUMBER, AND PHASE ASSOCIATED WITH EACH DETECTOR.
4. TRAFFIC CONTROLLER CABINETS, UNLESS OTHERWISE NOTED, SHALL BE NEMA TS2 TYPE 1 CABINET SIZE 6 ("P" TYPE) WITH NOMINAL DIMENSIONS OF 52"Hx44"Wx24"D.
5. ALL DELAY AND EXTENSION TIMES, AS CALLED FOR ON THE PLANS, FOR PROPOSED LOOP DETECTORS SHALL BE PROGRAMMED IN THE TRAFFIC SIGNAL CONTROLLER AND NOT THE DETECTOR RELAY.
6. A BARE GROUND WIRE SHALL BE PLACED IN ALL PVC CONDUITS AND SHALL BE BONDED TO GROUND RODS IN ACCORDANCE WITH SECTION T.03 OF THE RHODE ISLAND DEPARTMENT OF TRANSPORTATION STANDARD SPECIFICATIONS FOR ROAD AND BRIDGE CONSTRUCTION.
7. THE FINAL POSITION OF SIGNAL HEADS, PEDESTRIAN PUSHBUTTONS, DETECTORS, AND STOP LINE AND CROSSWALK PAVEMENT MARKINGS SHALL BE AS DIRECTED BY THE ENGINEER IN THE FIELD ACCORDING TO ACTUAL INTERSECTION CHARACTERISTICS.
8. A 2' MINIMUM BUFFER SHALL BE PROVIDED BETWEEN THE CURB AND ALL LATERAL OBSTRUCTIONS (INCLUDING ALL SIGNAL POLES AND TRAFFIC/PEDESTRIAN SIGNAL HEADS) TO PROVIDE ADEQUATE CLEARANCE FOR TURNING VEHICLES.
9. ALL FOUNDATIONS MUST HAVE CONES OR BARRELS BOLTED TO FOUNDATION BASES UNTIL ACTUAL POLE IS INSTALLED.
10. WHEN PLACING TRAFFIC SIGNAL HANDHOLES OR CONDUIT IN EXISTING PORTLAND CEMENT CONCRETE SIDEWALKS, THE ENTIRE SIDEWALK SQUARE OF CONCRETE SHALL BE REPLACED IN ACCORDANCE WITH R.I. STD. 43.1.0. NO PATCHES WILL BE ALLOWED.
11. ALL PEDESTRIAN PUSHBUTTONS SHALL BE COMPLIANT WITH "THE AMERICANS WITH DISABILITIES ACT ACCESSIBILITY GUIDELINES FOR BUILDINGS AND FACILITIES" (ADAAG) AND SHALL INCLUDE A PRESSURE-ACTIVATED (NON-MOVING) BUTTON. SIGNS APPLICABLE TO PUSHBUTTON ACTUATION SHALL BE INSTALLED SUCH THAT THE CROSSING ASSIGNED TO EACH BUTTON IS CLEARLY INDICATED. IF SITE CONDITIONS DO NOT ALLOW PEDESTRIAN PUSHBUTTONS TO BE INSTALLED WHERE CALLED FOR ON THE PLANS, THE R.I.D.O.T. TRAFFIC ENGINEERING UNIT SHALL BE CONSULTED WITH THROUGH AN R.F.I. PRIOR TO INSTALLING THE PUSHBUTTONS. THE FINAL PLACEMENT OF ALL PEDESTRIAN PUSHBUTTONS SHALL BE IN ACCORDANCE WITH ADAAG AND THE MANUAL ON UNIFORM TRAFFIC CONTROL DEVICES, LATEST EDITION.
12. ALL LOOP DETECTORS SHALL BE CENTERED WITHIN EACH LANE AS DELINEATED, UNLESS OTHERWISE DIMENSIONED ON PLANS.
13. ALL LOOP DETECTORS SHALL BE CUT INTO THE FINAL PAVEMENT SURFACE COURSE.
14. TRAFFIC SIGNAL CONTROLLERS SHALL BE WIRED SO THAT ANY FIRE PRE-EMPTION SHALL OVERRIDE MANUAL (PUSH BUTTON) OPERATION.
15. THE CONTRACTOR SHALL WORK CONTINUOUSLY TO RESTORE TRAFFIC SIGNAL OPERATION TO ITS INTENDED PURPOSE WHEN REPLACING THE TRAFFIC SIGNAL EQUIPMENT. A POLICE DETAIL IS REQUIRED TO DIRECT TRAFFIC AT THE INTERSECTION AT ALL TIMES WHEN THE TRAFFIC SIGNAL IS INOPERATIVE. AT NO TIME SHALL THE CONTRACTOR LEAVE THE SITE BEFORE RESTORING FULL TRAFFIC OPERATIONS.

MAINTENANCE AND PROTECTION OF TRAFFIC NOTES:

1. ALL MAINTENANCE AND PROTECTION OF TRAFFIC CONTROL SETUPS, SIGNS, CHANNELIZING DEVICES, ETC., SHALL BE IN ACCORDANCE WITH THE MANUAL ON UNIFORM TRAFFIC CONTROL DEVICES, LATEST EDITION.
2. ALL SIGN MOUNTINGS FOR TEMPORARY AND CONSTRUCTION SIGNS SHALL BE IN ACCORDANCE WITH THE R.I.D.O.T. STANDARD SPECIFICATIONS, LATEST EDITION.
3. THE CONTRACTOR SHALL COVER ALL EXISTING AND/OR TEMPORARY SIGNS THAT ARE NOT RELEVANT TO THE TRAFFIC CONTROL REQUIRED DURING ANY PARTICULAR STAGE OF THE CONTRACT.
4. ADVANCE FLAGPERSON SIGNS (W20-7A) SHALL BE USED IN ADVANCE OF ANY POINT AT WHICH A FLAGPERSON OR A POLICE OFFICER HAS BEEN STATIONED TO CONTROL TRAFFIC. WHEN NEEDED, AN APPROPRIATE DISTANCE MESSAGE MAY BE DISPLAYED ON A SUPPLEMENTAL PLATE (24"x18") BELOW THE FLAGPERSON SYMBOL SIGN. THE SIGN SHALL BE PROMPTLY REMOVED OR COVERED WHENEVER THE FLAGPERSON IS NOT AT THE STATION.
5. POLICE OFFICERS (AND NOT FLAGPERSONS) SHALL BE UTILIZED WHEN WORK WILL IMPACT SIGNALIZED INTERSECTIONS AND LIMITED ACCESS HIGHWAYS.
6. POLYETHYLENE DRUMS SHALL BE UTILIZED AS A CHANNELIZING DEVICE WHEN A TRAFFIC CONTROL SET-UP IS TO REMAIN BEYOND WORKING HOURS WHEN NO WORKERS ARE PRESENT. CONES SHALL BE UTILIZED WHEN A TRAFFIC CONTROL SET-UP IS TO REMAIN ONLY DURING WORKING HOURS AND IS SUBSEQUENTLY BROKEN DOWN AT THE END OF THE WORKDAY.
7. ARROW PANELS SHALL BE SET IN THE FLASHING FOUR CORNERS CAUTION MODE UNLESS UTILIZED FOR A MERGING TAPER. ARROW PANELS SET IN THE FLASHING ARROW MODE SHALL NOT BE UTILIZED FOR LANE SHIFTS.
8. TEMPORARY CONSTRUCTION SIGNS AND OTHER WORKZONE TRAFFIC CONTROL DEVICES THAT ARE DAMAGED OR REQUIRE RELOCATION SHALL BE REPLACED AND / OR RELOCATED UNDER THE PAY ITEM FOR "MAINTENANCE AND MOVEMENT TRAFFIC PROTECTION."
9. THE PRIVATE VEHICLES OF CONSTRUCTION WORKERS SHALL NOT BE PARKED ON THE TRAVEL LANES OR SHOULDERS. THEY MAY BE PARKED WITHIN THE STATE RIGHT-OF-WAY ONLY IN AREAS 30' BEYOND THE OUTSIDE EDGE OF THE TRAVEL LANES AND/OR IN AREAS APPROVED BY THE ENGINEER.
10. TEMPORARY CONSTRUCTION SIGNS AND OTHER TEMPORARY TRAFFIC CONTROL DEVICES SHALL BE INSTALLED PRIOR TO THE START OF WORK IN ANY AREA OPEN TO TRAFFIC, AND SHALL BE REMOVED AS SOON AS PRACTICAL WHEN THEY ARE NO LONGER APPROPRIATE.
11. THE INTENDED VEHICLE PATHS THROUGH EACH WORK ZONE SHALL BE CLEARLY MARKED AT ALL TIMES. WATERBORNE PAVEMENT MARKINGS SHALL BE INSTALLED BEFORE THE END OF THE WORK SHIFT ON ALL COLD-PLANNED AND NEW ROADWAY SURFACES THAT WILL BE OPENED TO TRAFFIC AT THE END OF THE SHIFT.

Verify that this is not equivalent to a freshwater wetlands on site.

DEPARTMENT OF ENVIRONMENTAL MANAGEMENT
 OFFICE OF WATER RESOURCES
 FRESHWATER WETLANDS PROGRAM
 APPROVED WITH CONDITIONS
 AS SPECIFIED IN THE LETTER OF APPROVAL
 DATED FEB 28 2020 FILE # 19-0304
 NO CHANGES ALLOWED WITHOUT PRIOR APPROVAL
 APPROVED PLANS MUST BE AT CONSTRUCTION SITE

THIS PLAN SHALL NOT BE ALTERED

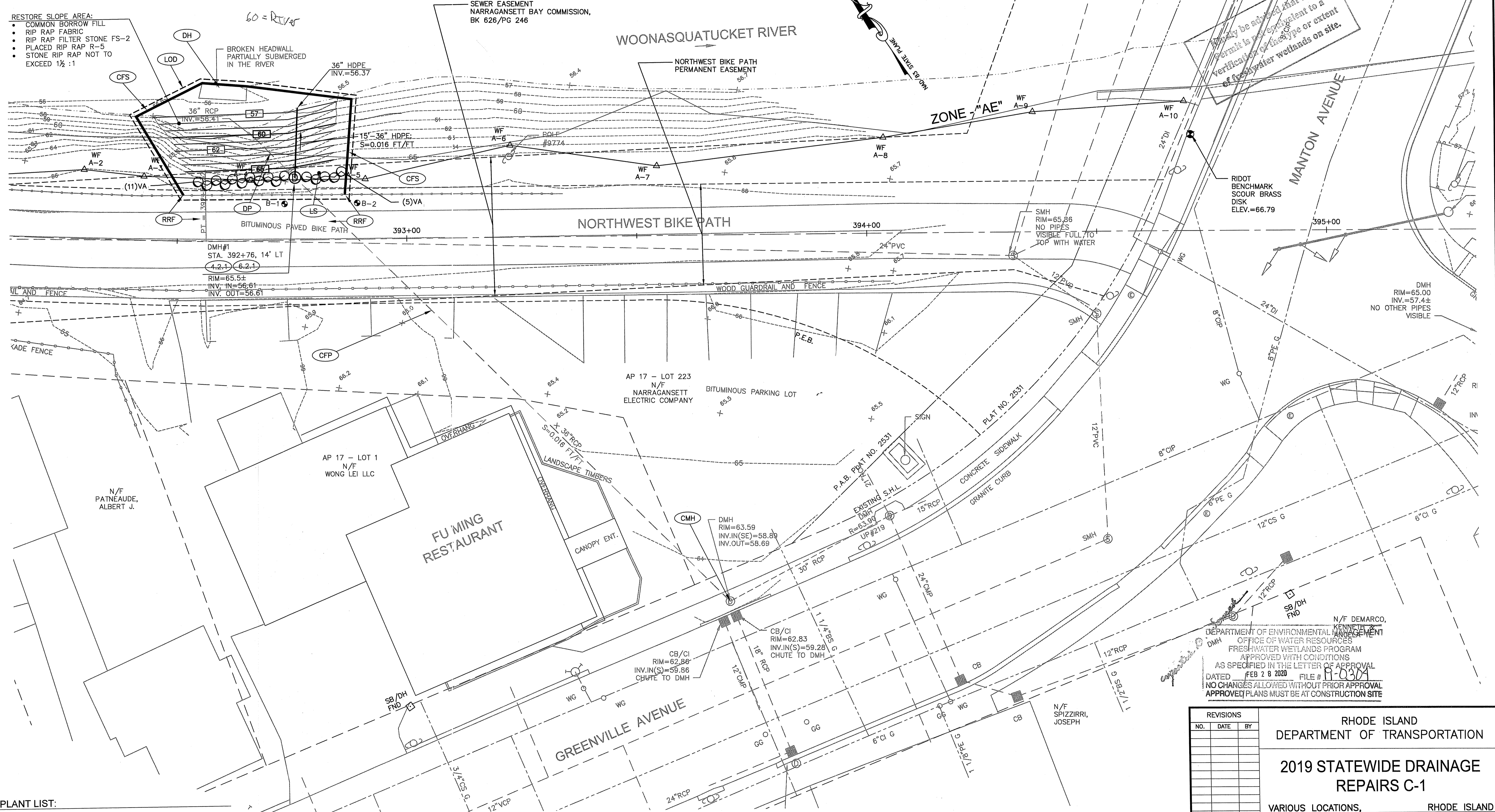
<table border="1" style="width: 100%; border-collapse: collapse;"> <thead> <tr> <th colspan="3">REVISIONS</th> </tr> <tr> <th>NO.</th> <th>DATE</th> <th>BY</th> </tr> </thead> <tbody> <tr> <td>1</td> <td>4/07</td> <td>TRB</td> </tr> <tr> <td>2</td> <td>11/07</td> <td>TRB</td> </tr> <tr> <td>3</td> <td>3/10</td> <td>RBH</td> </tr> </tbody> </table>	REVISIONS			NO.	DATE	BY	1	4/07	TRB	2	11/07	TRB	3	3/10	RBH	<p>RHODE ISLAND DEPARTMENT OF TRANSPORTATION</p> <p>2019 STATEWIDE DRAINAGE REPAIRS C-1</p> <p>VARIOUS LOCATIONS, RHODE ISLAND</p> <p>STANDARD NOTES - 2</p> <p>CHECKED BY: MWC DATE: 11/05/19 SCALE: N/A</p>
REVISIONS																
NO.	DATE	BY														
1	4/07	TRB														
2	11/07	TRB														
3	3/10	RBH														

GROFALO
GAROFALO & ASSOCIATES, INC.

85 CORLISS STREET \ P.O. BOX 6145
PROVIDENCE, RHODE ISLAND 02940

It may be advised that this permit is not equivalent to a verification of the type or extent of freshwater wetlands on site.

- RESTORE SLOPE AREA:
- COMMON BORROW FILL
 - RIP RAP FABRIC
 - RIP RAP FILTER STONE FS-2
 - PLACED RIP RAP R-5
 - STONE RIP RAP NOT TO EXCEED 1 1/2 : 1



PLANT LIST:

KEY	BOTANICAL NAME COMMON NAME	QTY.	SIZE	NOTE
VA	VACCINIUM ANGUSTIFOLIUM LOWBUSH BLUEBERRY	16	#3 CONTAINER	

N/F DEMARCO, KENNETH & ASSOCIATES
 DEPARTMENT OF ENVIRONMENTAL MANAGEMENT
 OFFICE OF WATER RESOURCES
 FRESHWATER WETLANDS PROGRAM
 APPROVED WITH CONDITIONS
 AS SPECIFIED IN THE LETTER OF APPROVAL
 DATED FEB 28 2020 FILE # R-0304
 NO CHANGES ALLOWED WITHOUT PRIOR APPROVAL
 APPROVED PLANS MUST BE AT CONSTRUCTION SITE

REVISIONS		
NO.	DATE	BY

RHODE ISLAND
 DEPARTMENT OF TRANSPORTATION

**2019 STATEWIDE DRAINAGE
 REPAIRS C-1**

VARIOUS LOCATIONS, RHODE ISLAND

**SITE 1
 JOHNSTON
 (LOCATION 2a)**

CHECKED BY: MWC DATE: 11/05/19 SCALE: 1"=10'

GROFALO
 GAROFALO & ASSOCIATES, INC.
 85 COLLISS STREET \ P.O. BOX 6145
 PROVIDENCE, RHODE ISLAND 02940