

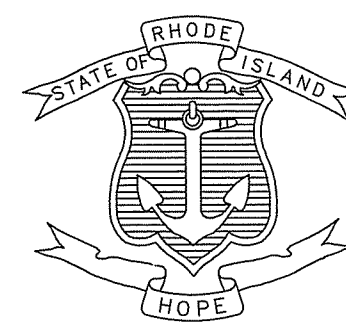
| FED. ROAD DIV. NO. | STATE | FEDERAL AID PROJECT NO. | FISCAL YEAR | SHEET NO. | TOTAL SHEETS |
|--------------------|-------|-------------------------|-------------|-----------|--------------|
| 1 | RI | - | 2020 | 1 | 23 |

INDEX

| SHEET NO. | DESCRIPTION |
|-----------|---|
| 1 | COVER SHEET |
| 2 | STANDARD PLAN SYMBOLS & STANDARD LEGEND |
| 3-4 | STANDARD NOTES 1-2 |
| 5 | JOB SPECIFIC PLAN SYMBOLS, LEGEND AND NOTES |
| 6 | TYPICAL SECTIONS |
| 7 | GENERAL PLAN |
| 8 | DRAINAGE & UTILITY PLAN |
| 9 | DRAINAGE DETAILS |
| 10 | LIST OF ABBREVIATIONS |
| 11-13 | RIDGE GENERAL NOTES SHEET 1-3 |
| 14 | BRIDGE GENERAL PLAN |
| 15 | LONGITUDINAL AND TRANSVERSE SECTIONS |
| 16 | PHASE CONSTRUCTION |
| 17 | DEMOLITION PLAN AND SECTION |
| 18-20 | SUBSTRUCTURE DEMOLITION SHEET 1-3 |
| 21 | PIER PLAN AND ELEVATION |
| 22 | PIER REINFORCING DETAILS |
| 23 | MISCELLANEOUS DETAILS |

It is hereby certified that this plan and specifications for the proposed bridge replacement of Mohegan Bridge No. 673 (43A) on Broncos Highway, Providence County, Rhode Island, were prepared by the undersigned in accordance with the laws of the State of Rhode Island.

STATE OF RHODE ISLAND



DEPARTMENT OF TRANSPORTATION

PLAN, PROFILES AND SECTIONS OF PROPOSED

BRIDGE REPLACEMENT

MOHEGAN BRIDGE No. 673 (43A)

PROJECT LIMITS

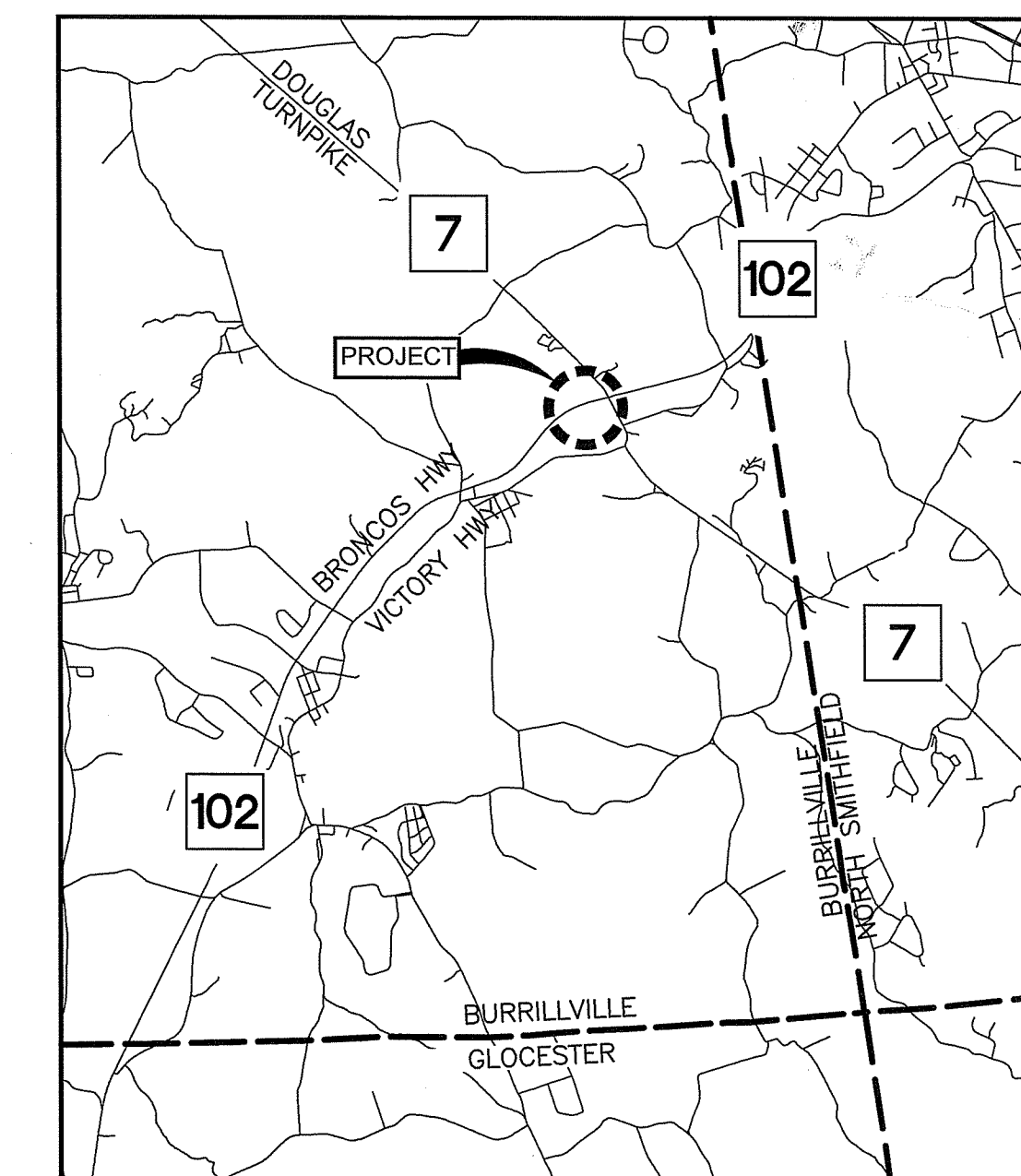
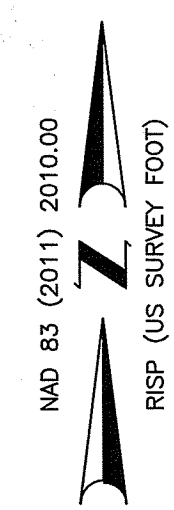
BRONCOS HIGHWAY STA. 262+50 TO STA. 271+00
 BURRILLVILLE, RHODE ISLAND
 PROVIDENCE COUNTY

R.I. CONTRACT NO. F.A. PROJECT NO.

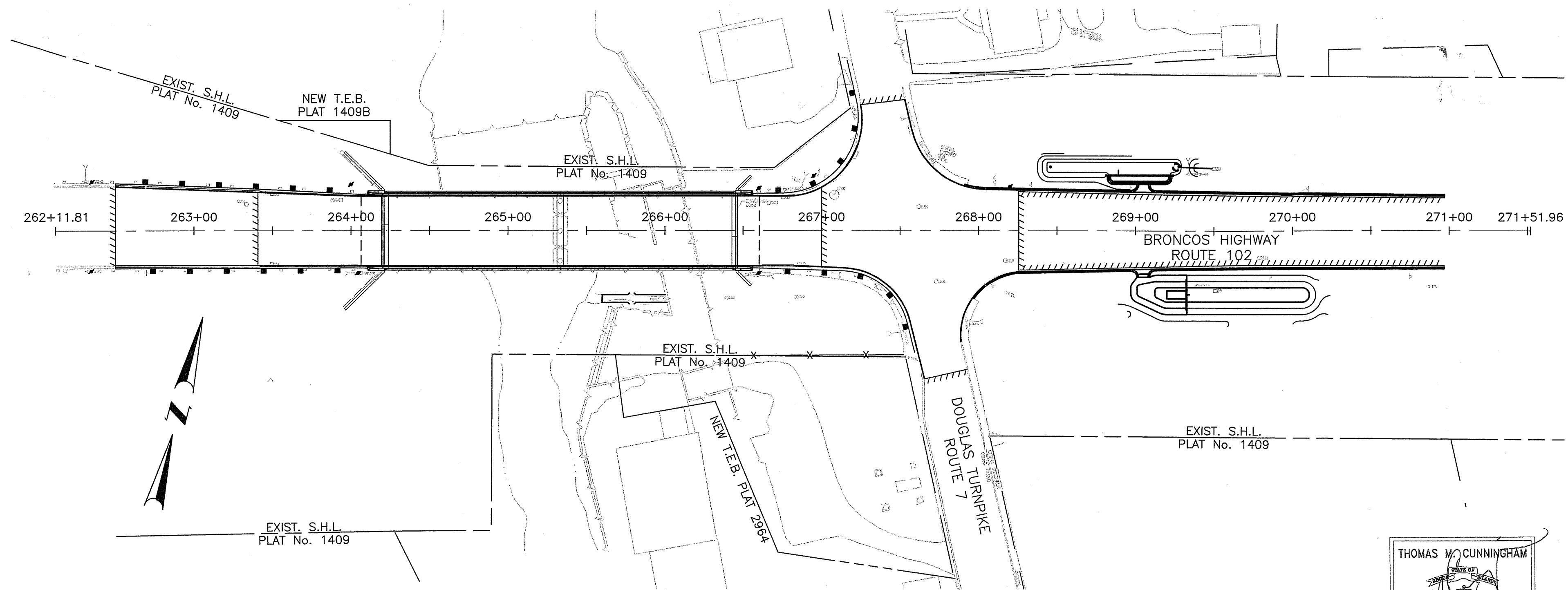
PROJECT LENGTH

R.I. ROUTE 102 (BRONCOS HIGHWAY) = 0.16 MILES

JAN 22 2020



LOCATION MAP
SCALE: 1"=5,000'

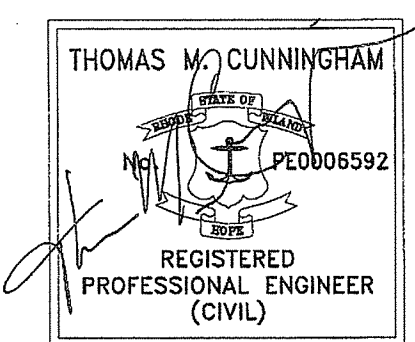


LAYOUT PLAN
SCALE: 1"=50'

DEPARTMENT OF ENVIRONMENTAL MANAGEMENT
 OFFICE OF WATER RESOURCES
 FRESHWATER WETLANDS PROGRAM
 APPROVED WITH CONDITIONS
 AS SPECIFIED IN THE LETTER OF APPROVAL
 DATED JUN 02 2020 FILE # 20-0055
 NO CHANGES ALLOWED WITHOUT PRIOR APPROVAL
 APPROVED PLANS MUST BE AT CONSTRUCTION SITE

RIDEM SUBMISSION JANUARY 22, 2020

| | |
|---|------|
| R.I. DEPARTMENT OF TRANSPORTATION | |
| APPROVED | |
| ADMINISTRATOR, PROJECT MANAGEMENT | DATE |
| APPROVED | |
| CHIEF ENGINEER OF INFRASTRUCTURE | DATE |
| APPROVED | |
| DIRECTOR | DATE |
| US DEPARTMENT OF TRANSPORTATION FEDERAL HIGHWAY ADMINISTRATION | |
| APPROVED | |
| DIVISION ADMINISTRATOR | DATE |



COMMONWEALTH ENGINEERS & CONSULTANTS, INC.

Contract Number _____
 Volume Number 1
 Number of Sheet 1
 Total Sheets 23

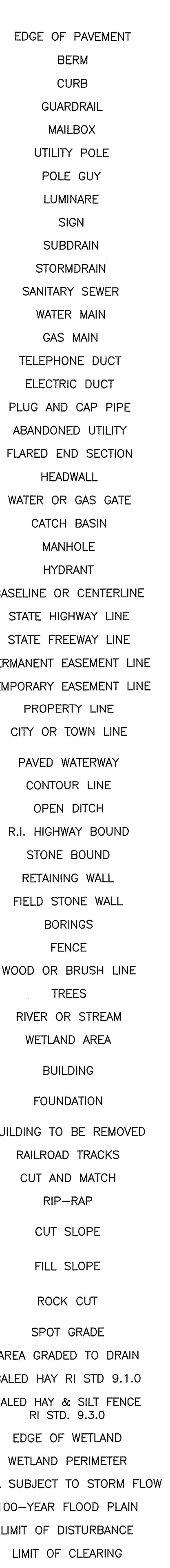
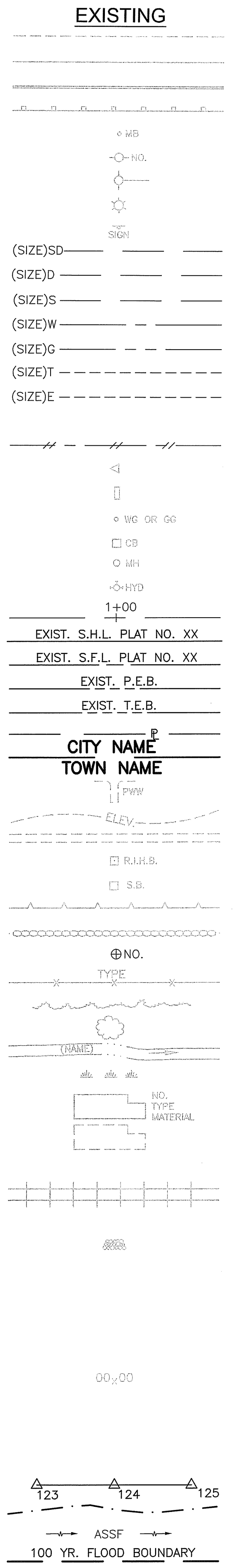
SCALES OF DRAWINGS
 Plans 1 inch = 20 feet
 Profiles 1 inch = 20 feet Horizontal
 Profiles 1 inch = 4 feet Vertical
 Cross Sections 1 inch = 4 feet Horizontal
 Cross Sections 1 inch = 4 feet Vertical

BASE OF LEVELS
 NAVD 1988 VERTICAL
 RISP COORDINATE SYSTEM
 NAD 83(2011) EPOCH 2010.00



R.I. STANDARD SPECIFICATIONS AND STANDARD DETAILS
 SPECIFICATIONS TO GOVERN THIS PROJECT ARE THE R.I. STANDARD SPECIFICATIONS FOR ROAD AND BRIDGE CONSTRUCTION 2004 EDITION (AMENDED MARCH 2018) WITH ALL REVISIONS, AND THE STATE AND FEDERAL SPECIAL PROVISIONS INCLUDED IN THE CONTRACT DOCUMENTS. STANDARD DETAILS FOR THIS PROJECT ARE R.I. STANDARD DETAILS, 1998 EDITION, WITH ALL REVISIONS.

| FED. ROAD DIV. NO. | STATE | FEDERAL AID PROJECT NO. | FISCAL YEAR | SHEET NO. | TOTAL SHEETS |
|--------------------|-------|-------------------------|-------------|-----------|--------------|
| 1 | RI | | 2020 | 2 | 23 |



| NEW | EXISTING | NEW | EXISTING | NEW | EXISTING | NEW | EXISTING |
|--------------|----------|--|--------------|-----|----------|--|------------|
| 1.1.0 | | UNDERDRAIN | 7.4.2 | | | GRANITE TRANSITION CURB (VERTICAL FACE TO SLOPE FACE) | AB |
| 1.3.0 | | CONCRETE CONNECTING COLLAR | 7.5.0 | | | BITUMINOUS CONCRETE LIP CURB | ABM |
| 2.1.0 | | CONCRETE HEADWALLS FOR PIPE CULVERTS | 7.5.1A | | | BITUMINOUS BERM (CONSTRUCTION METHOD A) | AC |
| 2.2.0 | | STANDARD HEADWALLS FOR MULTIPLE 3'-6" TO 7'-0" PIPE CULVERTS | 7.5.1B | | | BITUMINOUS BERM (CONSTRUCTION METHOD B) | AD |
| 2.3.0 (DIA.) | | PRECAST CONCRETE FLARED END SECTION | 7.6.0 | | | CURB SETTING DETAIL | AE |
| 3.2.0 | | BRICK/SOLID BLOCK 4'-0" ROUND MANHOLE | 8.2.0 | | | BITUMINOUS CONCRETE DITCH | AFC |
| 3.2.1 (DIA.) | | BRICK/SOLID BLOCK 5'-0" OR 6'-0" ROUND MANHOLE | 8.3.0 | | | RIP-RAP DITCH | AFG |
| 3.3.0 | | BRICK/SOLID BLOCK TYPE "D" SQUARE CATCH BASIN | 8.4.0 | | | PAVED WATERWAY | AG |
| 3.3.2 | | BRICK/SOLID BLOCK TYPE "F" SQUARE CATCH BASIN | 9.1.0 | | | BALED HAY EROSION CHECK | AHH |
| 3.3.3 | | SOLID BLOCK FLUSH SQUARE CATCH BASIN | 9.2.0 | | | SILT FENCE DETAIL | AS |
| 3.4.0 | | BRICK/SOLID BLOCK TYPE "D" ROUND CATCH BASIN | 9.3.0 | | | BALED HAY DITCH EROSION CHECK AND SILT FENCE COMBINED | AT |
| 3.4.1 | | BRICK/SOLID BLOCK ROUND CATCH BASIN WITH GUTTER INLET | 9.4.0 | | | BALED HAY DITCH AND SWALE EROSION CHECK | AW |
| 3.4.2 | | BRICK/SOLID BLOCK TYPE "F" ROUND CATCH BASIN | 9.5.0 | | | LOG AND HAY CHECK DAM | BCD |
| 3.4.3 | | BRICK/SOLID BLOCK TYPE "R" CATCH BASIN | 9.7.0 | | | DEWATERING BASIN | |
| 3.4.4 | | SOLID BLOCK FLUSH ROUND CATCH BASIN | 9.8.0 | | | BALED HAY CATCH BASIN INLET PROTECTION | BPS |
| 3.4.5 (DIA.) | | BRICK/SOLID BLOCK 5'-0" OR 6'-0" ROUND CATCH BASIN | 9.9.0 | | | CONSTRUCTION ACCESS | CCB |
| 3.5.0 | | SOLID BLOCK SHALLOW TYPE "F" SQUARE CATCH BASIN | 10.1.0 | | | WET STONE MASONRY RETAINING WALL | CCP |
| 3.5.1 (SIZE) | | SOLID BLOCK SHALLOW 5'-0" OR 6'-0" SQUARE CATCH BASIN | 10.2.0 | | | RUBBLE MASONRY WALL | CCF |
| 3.6.0 | | BRICK/SOLID BLOCK DROP INLET | 10.3.0 | | | CONCRETE RETAINING WALL | CG |
| 3.7.0 (DIA.) | | BRICK/SOLID BLOCK ROUND MANHOLE OR CATCH BASIN GREATER THAN 12'-0" | 10.4.0 | | | STONE MASONRY STEPS | CMH |
| 4.2.0 | | PRECAST 4'-0" ROUND MANHOLE | 14.1.0 | | | CONCRETE HIGHWAY BOUND | CP (DEPTH) |
| 4.2.1 | | PRECAST 5'-0" ROUND MANHOLE | 15.1.0 | | | POST AND MOUNTINGS FOR RURAL MAILBOX | CPP |
| 4.2.2 | | PRECAST 6'-0" ROUND MANHOLE | 15.2.0 (NO.) | | | POST AND MULTIPLE MOUNTINGS FOR RURAL MAILBOXES | DB |
| 4.3.0 (SIZE) | | PRECAST 4'-0" OR 6'-0" SQUARE MANHOLE OR CATCH BASIN | 18.2.0 | | | PRECAST TYPE "A" HANDHOLE | DC |
| 4.4.0 (DIA.) | | PRECAST 4'-0", 5'-0", OR 6'-0" ROUND CATCH BASIN | 18.2.2 | | | HEAVY DUTY TYPE "H" HANDHOLE | DCB |
| 4.5.0 | | PRECAST CONCRETE DROP INLET | 18.3.0 | | | ALUMINUM LIGHTING STANDARDS | DDI |
| 4.5.1 | | PRECAST CONCRETE DROP INLET LATERAL OUTLET | 20.2.0 | | | BI-DIRECTIONAL CONTROL DEVICE | DF |
| 4.5.2 | | PRECAST CONCRETE DROP INLET LONGITUDINAL OUTLET | 24.6.1 | | | STREET SIGN MOUNTING DETAIL | DFC |
| 5.3.0 | | CATCH BASIN AND MANHOLE STEP | 26.2.0 | | | POLYETHYLENE DRUM WITH MARKINGS | DFE |
| 5.4.0 | | CONCRETE COLLARS | 26.3.0 | | | PVC PLASTIC PIPE TYPE III BARRICADE | DFG |
| 6.1.0 | | LIGHT-DUTY SQUARE FRAME AND ROUND COVER | 31.1.0 | | | CHAIN LINK FENCE 3'-0" TO 4'-0" | DFH |
| 6.1.1 | | HEAVY DUTY SQUARE FRAME AND ROUND COVER | 31.2.0 | | | CHAIN LINK FENCE 5'-0" TO 6'-0" | DFP |
| 6.2.0 | | LIGHT-DUTY ROUND FRAME AND COVER | 31.2.1 | | | CHAIN LINK FENCE 5'-0" TO 6'-0" INTERMEDIATE POST | DG |
| 6.2.1 | | HEAVY-DUTY ROUND FRAME AND COVER | 31.3.0 | | | WOVEN WIRE RIGHT-OF-WAY FENCE (STEEL POST) | DH |
| 6.3.0 | | SQUARE FRAME AND GRATE | 34.1.0 | | | TYPICAL GUARDRAIL INSTALLATION | DHB |
| 6.3.1 | | SQUARE FRAME AND GRATE | 34.2.0 | | | STEEL BEAM GUARDRAIL | DHH |
| 6.3.2 | | SQUARE FRAME AND GRATE (BICYCLE SAFE) | 34.2.1 | | | STEEL BEAM GUARDRAIL DETAILS | DL |
| 6.3.3 | | HIGH CAPACITY FRAME AND GRATE | 34.2.2 | | | STEEL BEAM GUARDRAIL DOUBLE FACED ASSEMBLY | DMB |
| 6.3.4 | | HIGH CAPACITY FRAME AND GRATE (BICYCLE SAFE) | 34.2.3 | | | STEEL BEAM GUARDRAIL FIXTURES | DMH |
| 6.4.0 | | ROUND FRAME AND GRATE | 34.2.5 | | | STEEL BEAM GUARDRAIL REFLECTORIZED TRIANGULAR DELINEATOR | DMM |
| 7.1.0S | | PRECAST CONCRETE CURB (STRAIGHT) | 34.3.1 | | | GUARDRAIL END SECTION | DOW |
| 7.1.0C | | PRECAST CONCRETE CURB (CIRCULAR) | 34.3.2 | | | TERMINAL END SECTION (SINGLE FACE) | DP |
| 7.1.1 | | 3'-0" PRECAST CONCRETE TRANSITION CURB | 34.3.3 | | | ANCHORAGE DETAILS APPROACH END SECTION | DPB |
| 7.1.2 | | 6'-0" PRECAST CONCRETE TRANSITION CURB | 34.3.4 | | | ANCHORAGE DETAILS TRAILING END SECTION | DRB |
| 7.1.4 | | PRECAST 2'-0" RADIUS CORNER | 34.4.0 | | | STEEL BACKED TIMBER GUARDRAIL | DS |
| 7.1.5 | | PRECAST CONCRETE INLET STONE (FOR SQUARE CATCH BASIN) | 34.4.1 | | | STEEL BACKED TIMBER GUARDRAIL TERMINAL SECTION-TYPE 1 | DSS |
| 7.1.6 | | PRECAST CONCRETE INLET STONE (FOR ROUND CATCH BASIN) | 40.1.0 | | | DOUBLE-FACED PRECAST MEDIAN BARRIER | DSW |
| 7.1.7 | | PRECAST CONCRETE APRON STONE (FOR SQUARE CATCH BASIN) | 40.2.0 | | | SINGLE-FACED PRECAST MEDIAN BARRIER | DTD |
| 7.1.8 | | PRECAST CONCRETE APRON STONE (FOR ROUND CATCH BASIN) | 40.2.1 | | | SINGLE-FACED PRECAST MEDIAN BARRIER | DUP |
| 7.2.0S | | PRECAST CONCRETE SLOPED FACE CURB (STRAIGHT) | 40.3.0 | | | PRECAST MEDIAN BARRIER TRANSITION UNIT | DWW |
| 7.2.0C | | PRECAST CONCRETE SLOPED FACE CURB (CIRCULAR) | 40.5.0 | | | PRECAST MEDIAN BARRIER FOR TEMPORARY TRAFFIC CONTROL | FF |
| 7.2.1 | | PRECAST CONCRETE SLOPED FACE TRANSITION CURB | 43.1.0 | | | CEMENT CONCRETE SIDEWALK | GET |
| 7.2.2 | | PRECAST CONCRETE TRANSITION CURB (VERTICAL FACE TO SLOPED FACE) | 43.2.0 | | | BITUMINOUS CONCRETE SIDEWALK | IA |
| 7.3.0S | | GRANITE CURB (STRAIGHT) | 43.3.0 | | | WHEELCHAIR RAMP | IDL |
| 7.3.0C | | GRANITE CURB (CIRCULAR) | 43.3.1 | | | WHEELCHAIR RAMP FOR LIMITED RIGHT-OF-WAY AREAS | LOD |
| 7.3.1 | | 3'-0" GRANITE TRANSITION CURB | 43.4.0 | | | DRIVEWAY DEVELOPMENT FOR 3'-0" TRANSITION CURB | LOR |
| 7.3.2 | | 6'-0" GRANITE TRANSITION CURB | 43.4.1 | | | DRIVEWAY DEVELOPMENT FOR 6'-0" TRANSITION CURB | LS |
| 7.3.3 | | GRANITE WHEELCHAIR RAMP TRANSITION CURB | 43.5.0 | | | CEMENT CONCRETE DRIVEWAYS | |
| 7.3.4 | | GRANITE 2'-0" RADIUS CORNER | 48.1.0 | | | DETECTABLE WARNING SYSTEM | |
| 7.3.5 | | GRANITE INLET STONE (FOR SQUARE CATCH BASIN) | 51.1.0 | | | TREE PROTECTION DEVICE | |
| 7.3.6 | | GRANITE INLET STONE (FOR ROUND CATCH BASIN) | 51.1.1 | | | DRIP LINE TREE PROTECTION DEVICE FOR EXISTING TREES | |
| 7.3.7 | | GRANITE APRON STONE (FOR SQUARE CATCH BASIN) | 51.2.0 | | | SHRUB PROTECTION DEVICE | |
| 7.3.8 | | GRANITE APRON STONE (FOR ROUND CATCH BASIN) | 51.3.0 | | | TREE WELL | |
| 7.4.0 | | GRANITE SLOPED FACE CURB | 51.4.0 | | | TREE WALL | |
| 7.4.1 | | GRANITE SLOPED FACE TRANSITION CURB | | | | | |

| | | |
|--|--------|--|
| ADJUST CATCH BASIN TO GRADE | NFH | NEW FIRE HYDRANT WITH GATE VALVE |
| ADJUST CATCH BASIN TO MANHOLE | NIC | NOT IN THIS CONSTRUCTION CONTRACT |
| ADJUST CURB STOP TO GRADE | NWB | FURNISH AND INSTALL NEW WATER GATE VALVE BOX |
| ADJUST DRAINAGE MANHOLE TO GRADE | NWVB | FURNISH AND INSTALL NEW WATER GATE VALVE AND BOX |
| ADJUST ELECTRIC MANHOLE TO GRADE | NWCB | FURNISH AND INSTALL NEW WATER CURB STOP BOX |
| ADJUST FRAME AND COVER TO GRADE | NWSB | FURNISH AND INSTALL NEW WATER CURB STOP AND BOX |
| ADJUST FRAME AND GRATE TO GRADE | PCD | PERMANENT CHECK DAM |
| ADJUST GAS GATE BOX TO GRADE | PS | 4" PLANTABLE SOIL AND SEED |
| ADJUST HANDHOLE TO GRADE | RCB | RECONSTRUCT TYPE "D" CATCH BASIN, TO CATCH BASIN WITH GUTTER INLET |
| ADJUST SANITARY SEWER MANHOLE TO GRADE | RCM | R.I.D.O.T. COMMUNICATIONS MANHOLE |
| ADJUST TELEPHONE MANHOLE TO GRADE | RHH | REMOVE, HANDLE, HAUL, TRIM, RESET CURB EDGING, STRAIGHT, CIRCULAR (ALL TYPES) |
| ADJUST WATER GATE BOX TO GRADE | RLP | RELOCATE LAMP POST |
| BITUMINOUS CONCRETE DRIVEWAY | RMB | RELOCATE MAILBOX (BY OTHERS) |
| 3" BITUMINOUS CONCRETE TYPE 1-2 | RPM | CLEAN CATCH BASIN |
| 8" GRAVEL BORROW SUBBASE COURSE | RRP | CUT AND CAP PIPE WITH RESTRAINT (ALL SIZES) |
| | RRS | CLEAN AND FLUSH PIPE |
| | RUP | CLEARING AND GRUBBING |
| | SB | CLEAN MANHOLE |
| | SBAE | CP (DEPTH) COLD PLANE |
| | SBTE | CUT AND PLUG PIPE (ALL TYPES, ALL SIZES) |
| | SD- | REMOVE AND DISPOSE BITUMINOUS CURB |
| | SF | REMOVE AND DISPOSE CONCRETE CURB |
| | SGA | REMOVE AND DISPOSE CATCH BASIN |
| | SGC | REMOVE AND DISPOSE DROP INLET |
| | SGR | REMOVE AND DISPOSE FENCE |
| | SH | REMOVE AND DISPOSE FRAME AND COVER |
| | SS | REMOVE AND DISPOSE FLARED END SECTION |
| | STS | REMOVE AND DISPOSE FRAME AND GRATE |
| | TB | REMOVE AND DISPOSE FIRE HYDRANT |
| | TEP | REMOVE AND DISPOSE FLEXIBLE PAVEMENT |
| | TNP | REMOVE AND DISPOSE GUARDRAIL |
| | TBT | REMOVE AND DISPOSE HEADWALL |
| | TBBC | REMOVE AND DISPOSE HIGHWAY BOUND |
| | TT | REMOVE AND DISPOSE HANDHOLE |
| | WCM | REMOVE AND DISPOSE LIGHT AND FOUNDATION |
| | 4DY | REMOVE AND DISPOSE MEDIAN BARRIER |
| | 6W | REMOVE AND DISPOSE MANHOLE |
| | 12W | REMOVE AND DISPOSE MEDIAN MARKER |
| | 6WT | REMOVE AND DISPOSE OBSERVATION WELL |
| | 4Y | REMOVE AND DISPOSE PIPE |
| | 6Y | REMOVE AND DISPOSE PAVEMENT AND RIGID BASE |
| | P.G.L. | REMOVE AND DISPOSE RIGID BASE |
| | | REMOVE AND DISPOSE SIGN |
| | | REMOVE AND DISPOSE TRAFFIC SIGNAL SYSTEM |
| | | REMOVE AND DISPOSE SIDEWALK |
| | | REMOVE AND DISPOSE TELEPHONE DUCT BANKS AS SPECIFIED IN THE LETTER OF APPROVAL |
| | | REMOVE AND DISPOSE UTILITY POLE |
| | | REMOVE AND DISPOSE PAVED WATERWAY |
| | | FILTER FABRIC RIPRAP FLARED END UNDERLAYMENT |
| | | FLARED GUARDRAIL END TREATMENT |
| | | IMPACT ATTENUATOR |
| | | IMPERVIOUS DITCH LINER |
| | | LIMIT OF DISTURBANCE |
| | | LIMIT OF REGRADING |
| | | 4" LOAM AND SEED |

DEPARTMENT OF ENVIRONMENTAL MANAGEMENT
OFFICE OF WATER RESOURCES
FRESHWATER WETLANDS PROGRAM
APPROVED WITH CONDITIONS
AS SPECIFIED IN THE LETTER OF APPROVAL
DATED JUN 02 2020 FILE # 20-0025
NO CHANGES ALLOWED WITHOUT PRIOR APPROVAL
PROVIDED PLANS MUST BE AT CONSTRUCTION SITE

THOMAS W. CUNNINGHAM
REGISTERED PROFESSIONAL ENGINEER (CIVIL)

| REVISIONS | | |
|-----------|------|-----|
| NO. | DATE | BY |
| 1 | 6/07 | TRB |

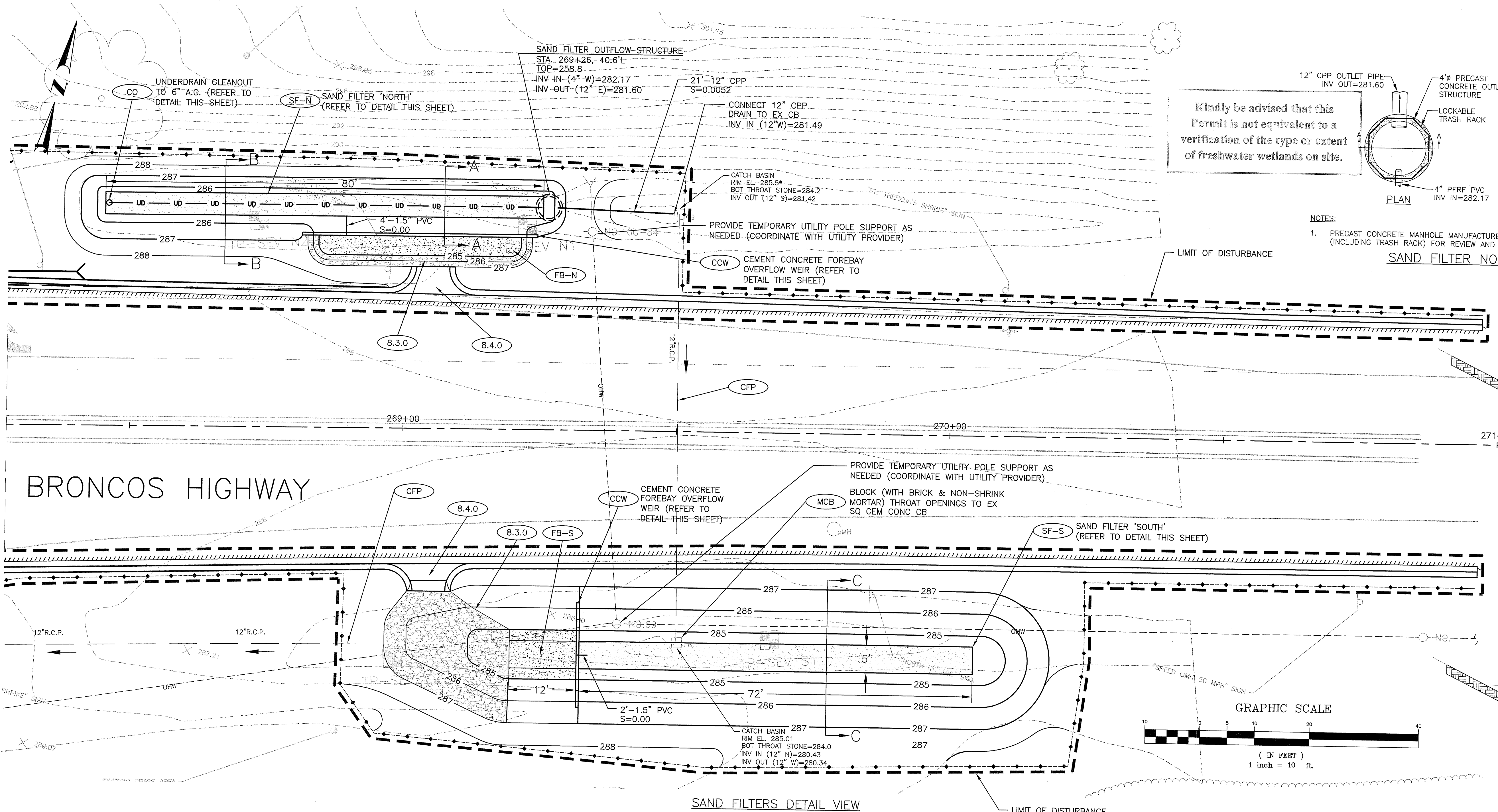
RHODE ISLAND
DEPARTMENT OF TRANSPORTATION

BRIDGE REPLACEMENT
MOHEGAN BRIDGE
BRIDGE No. 673 (43A)
BURRILLVILLE, RHODE ISLAND

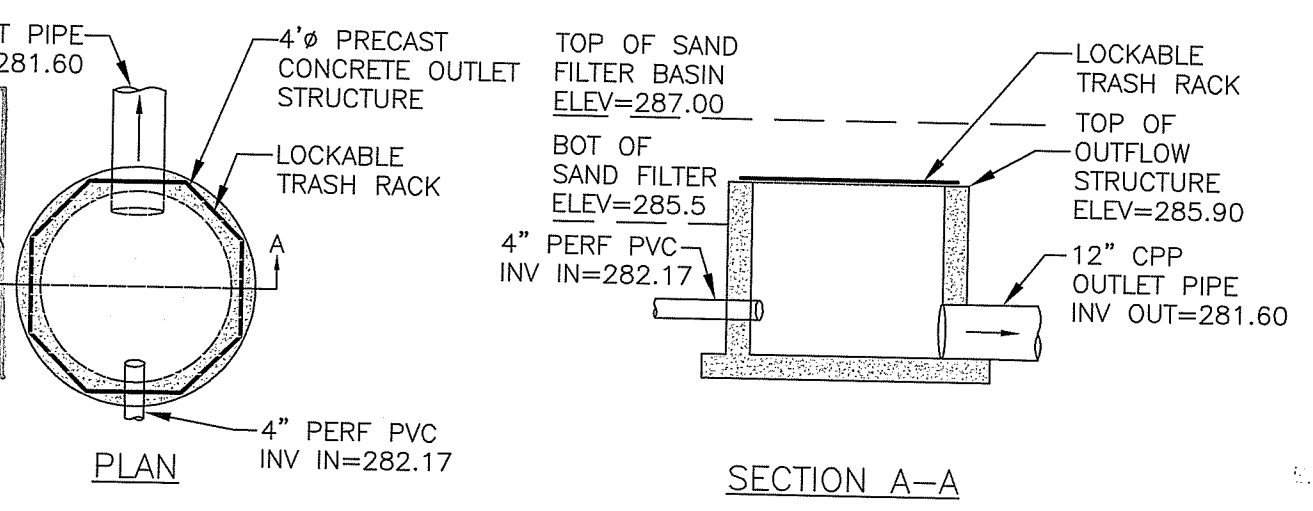
STANDARD PLAN SYMBOLS & STANDARD LEGEND

CHECKED BY _____ DATE _____ SCALE NO SCALE

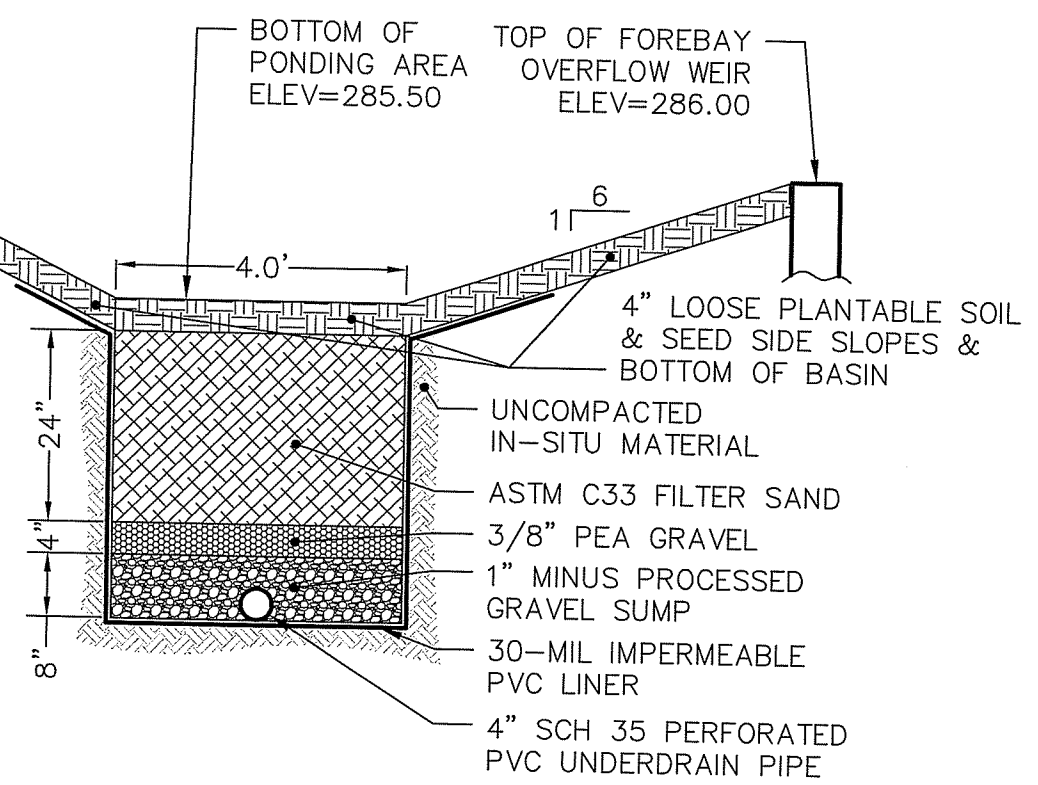
COMMONWEALTH
ENGINEERS & CONSULTANTS, INC.
400 SMITH STREET
PROVIDENCE, RI 02908



Kindly be advised that this Permit is not equivalent to a verification of the type or extent of freshwater wetlands on site.

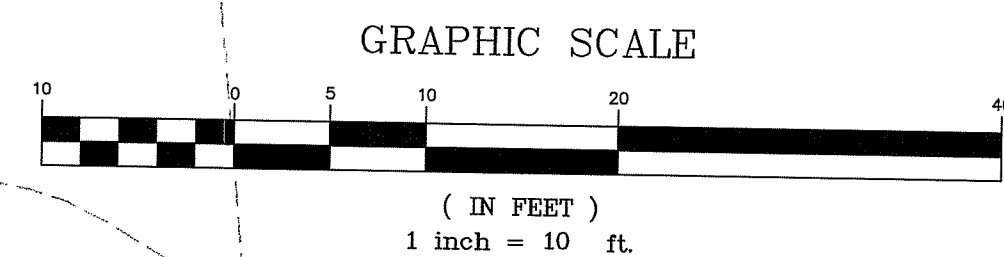


NOTES:
1. PRECAST CONCRETE MANHOLE MANUFACTURER SHALL SUBMIT SHOP DRAWING OF STRUCTURE (INCLUDING TRASH RACK) FOR REVIEW AND APPROVAL.

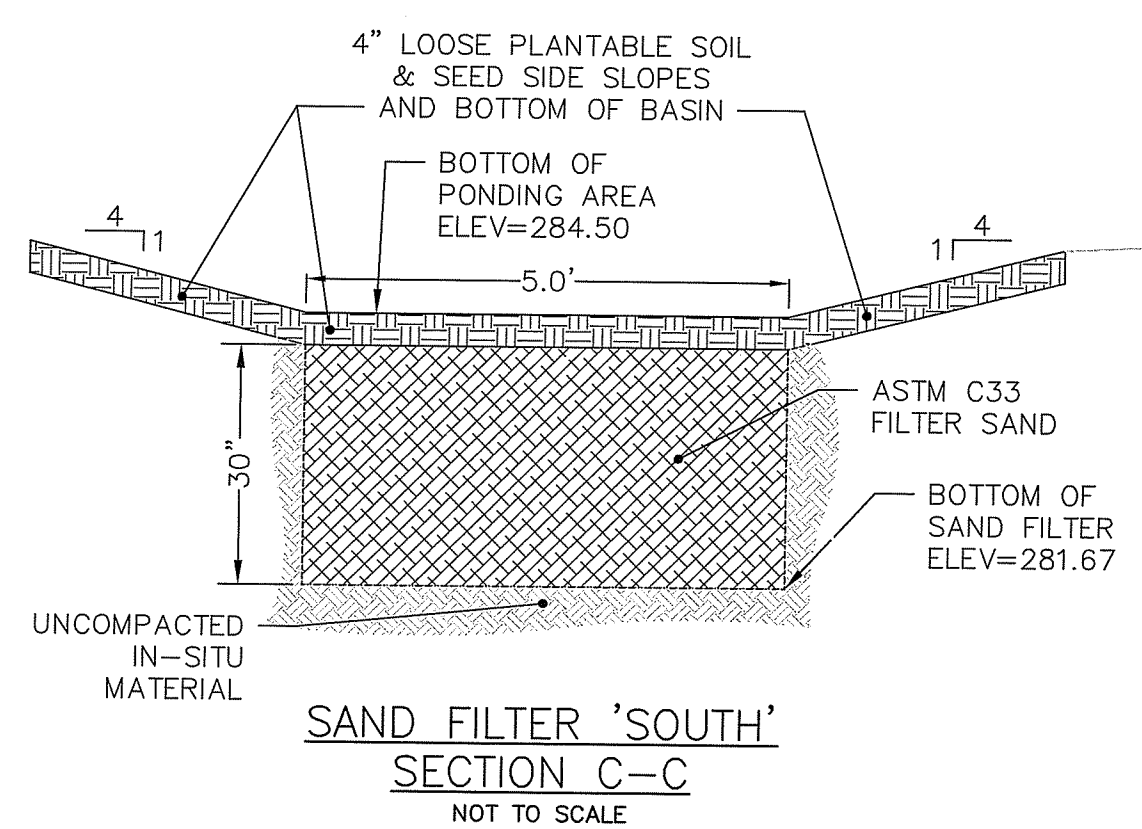


SAND FILTER 'NORTH' SECTION A-A
NOT TO SCALE

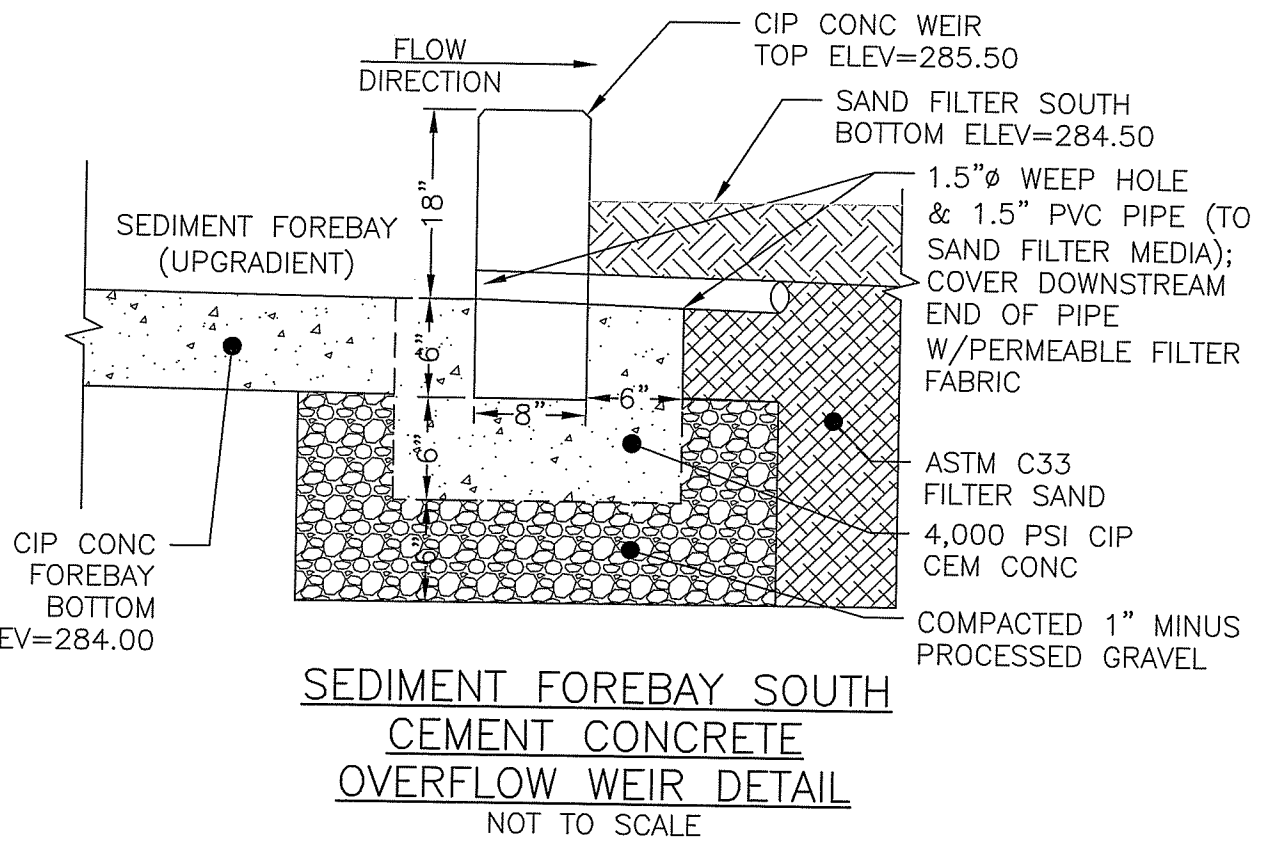
NOT TO SCALE OF ENVIRONMENTAL MANAGEMENT OFFICE OF WATER RESOURCES FRESHWATER WETLANDS PROGRAM APPROVED WITH CONDITIONS AS SPECIFIED IN THE LETTER OF APPROVAL DATED JUN 02 2020 FILE # 20-0025 NO CHANGES ALLOWED WITHOUT PRIOR APPROVAL APPROVED PLANS MUST BE AT CONSTRUCTION SITE



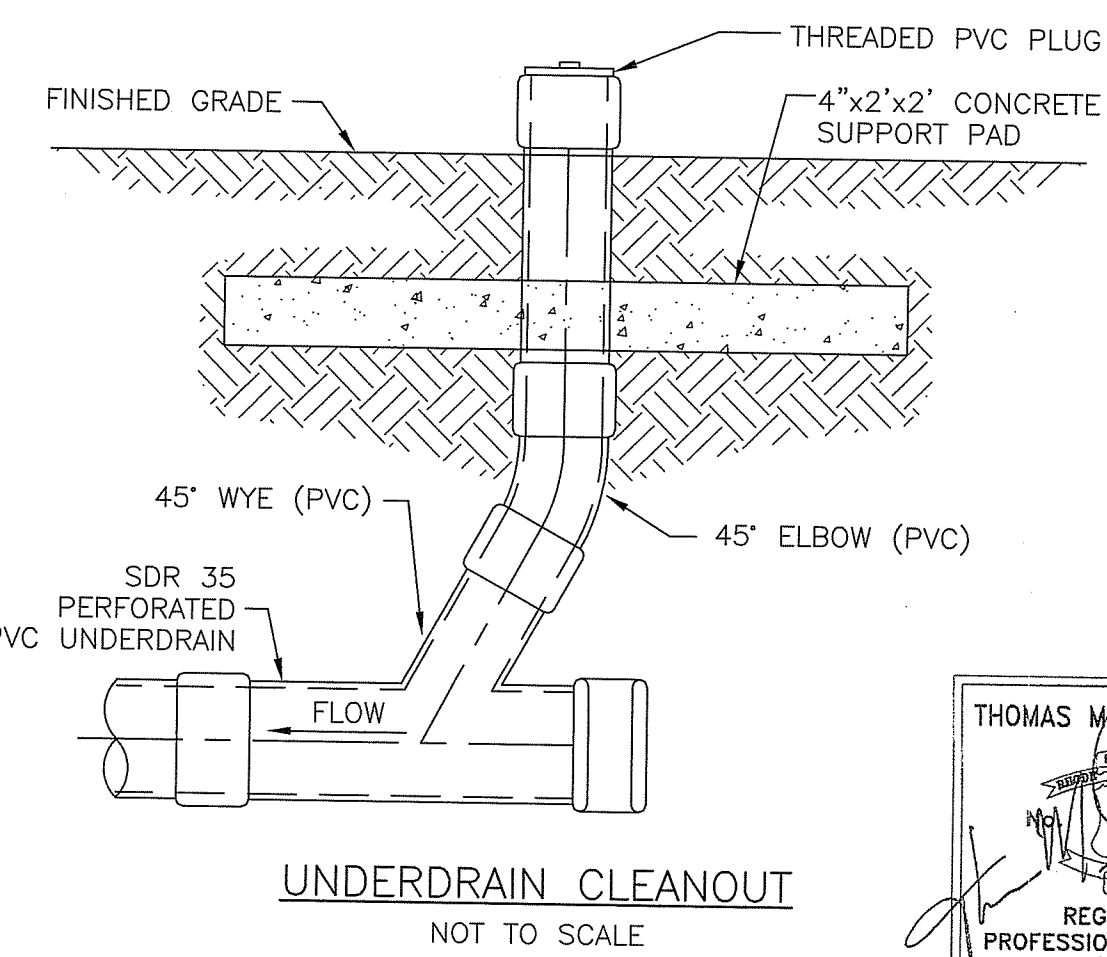
SAND FILTERS DETAIL VIEW
SCALE: 1" = 10'



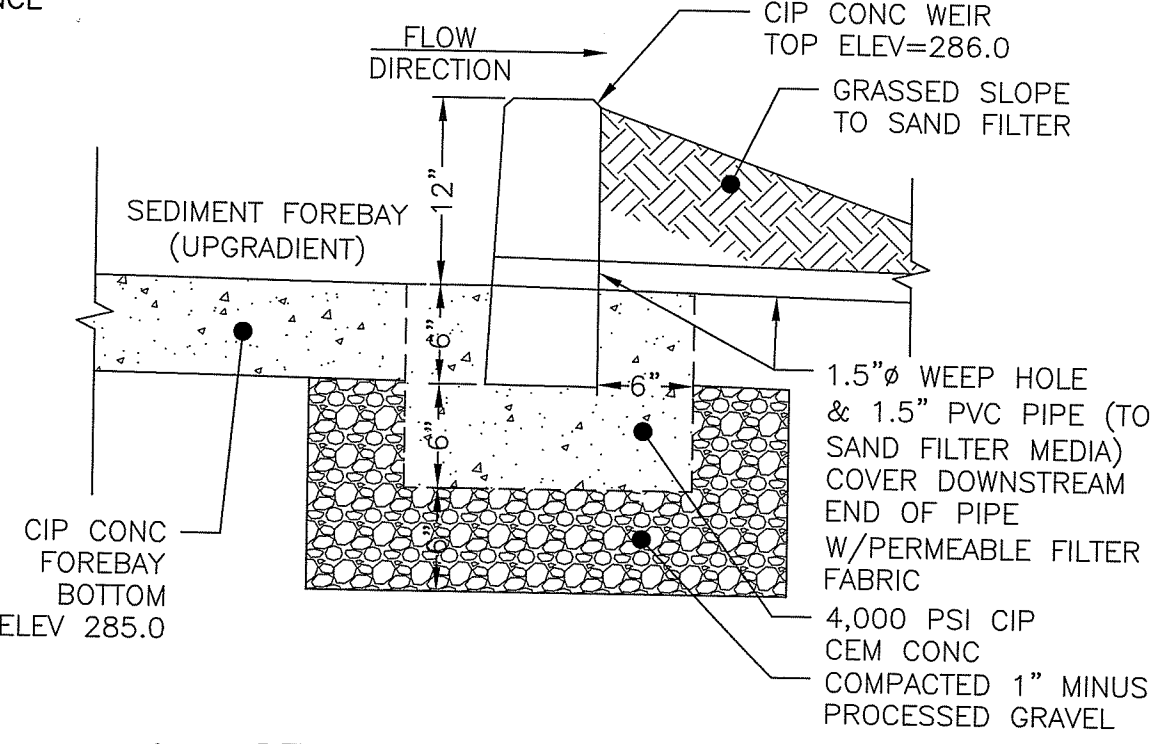
SAND FILTER 'SOUTH' SECTION C-C
NOT TO SCALE



SEDIMENT FOREBAY SOUTH CEMENT CONCRETE OVERFLOW WEIR DETAIL
NOT TO SCALE



UNDERDRAIN CLEANOUT
NOT TO SCALE



SEDIMENT FOREBAY NORTH CEMENT CONCRETE OVERFLOW WEIR DETAIL
NOT TO SCALE

THOMAS M. CUNNINGHAM
REGISTERED PROFESSIONAL ENGINEER (CIVIL)
PE0006592

COMMONWEALTH ENGINEERS & CONSULTANTS, INC.
400 SMITH STREET
PROVIDENCE, RI 02908

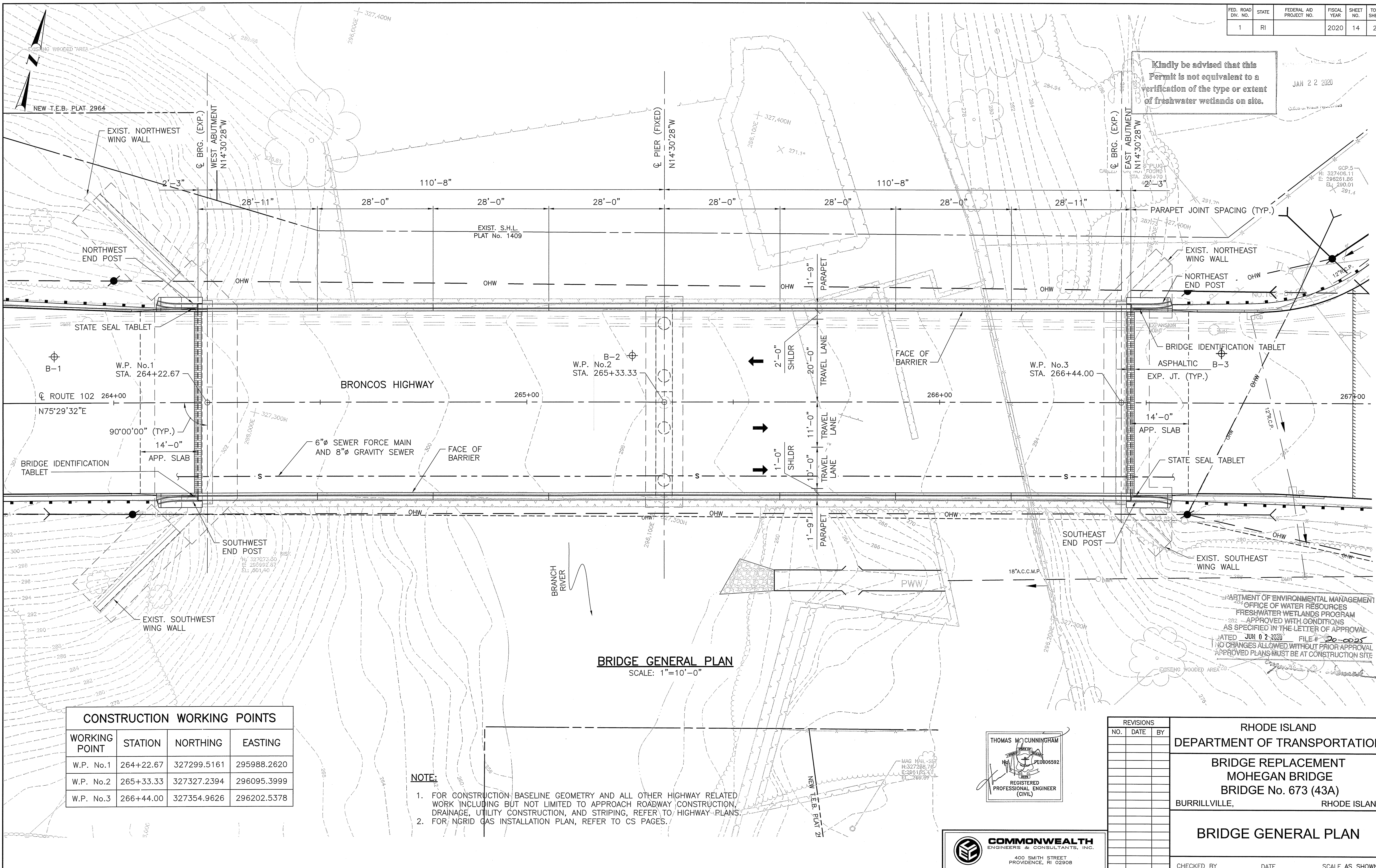
| REVISIONS | | |
|-----------|------|----|
| NO. | DATE | BY |
| | | |
| | | |
| | | |

RHODE ISLAND DEPARTMENT OF TRANSPORTATION
BRIDGE REPLACEMENT MOHEGAN BRIDGE BRIDGE No. 673 (43A)
BURRILLVILLE, RHODE ISLAND

DRAINAGE DETAILS

Kindly be advised that this Permit is not equivalent to a verification of the type or extent of freshwater wetlands on site.

JAN 22 2020



BRIDGE GENERAL PLAN
SCALE: 1"=10'-0"

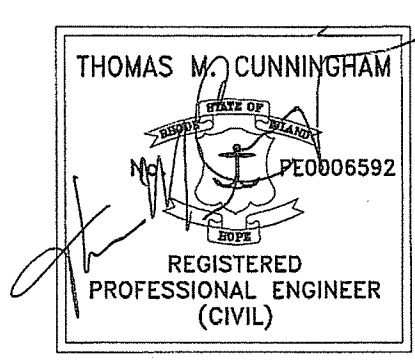
CONSTRUCTION WORKING POINTS

| WORKING POINT | STATION | NORTHING | EASTING |
|---------------|-----------|-------------|-------------|
| W.P. No.1 | 264+22.67 | 327299.5161 | 295988.2620 |
| W.P. No.2 | 265+33.33 | 327327.2394 | 296095.3999 |
| W.P. No.3 | 266+44.00 | 327354.9626 | 296202.5378 |

NOTE:

- FOR CONSTRUCTION BASELINE GEOMETRY AND ALL OTHER HIGHWAY RELATED WORK INCLUDING BUT NOT LIMITED TO APPROACH ROADWAY CONSTRUCTION, DRAINAGE, UTILITY CONSTRUCTION, AND STRIPING, REFER TO HIGHWAY PLANS.
- FOR NGRID GAS INSTALLATION PLAN, REFER TO CS PAGES.

DEPARTMENT OF ENVIRONMENTAL MANAGEMENT
OFFICE OF WATER RESOURCES
FRESHWATER WETLANDS PROGRAM
262 - APPROVED WITH CONDITIONS
AS SPECIFIED IN THE LETTER OF APPROVAL
DATED JUN 02 2020 FILE # 20-0025
NO CHANGES ALLOWED WITHOUT PRIOR APPROVAL
APPROVED PLANS MUST BE AT CONSTRUCTION SITE



| REVISIONS | | |
|-----------|------|----|
| NO. | DATE | BY |
| | | |
| | | |
| | | |

**RHODE ISLAND
DEPARTMENT OF TRANSPORTATION**

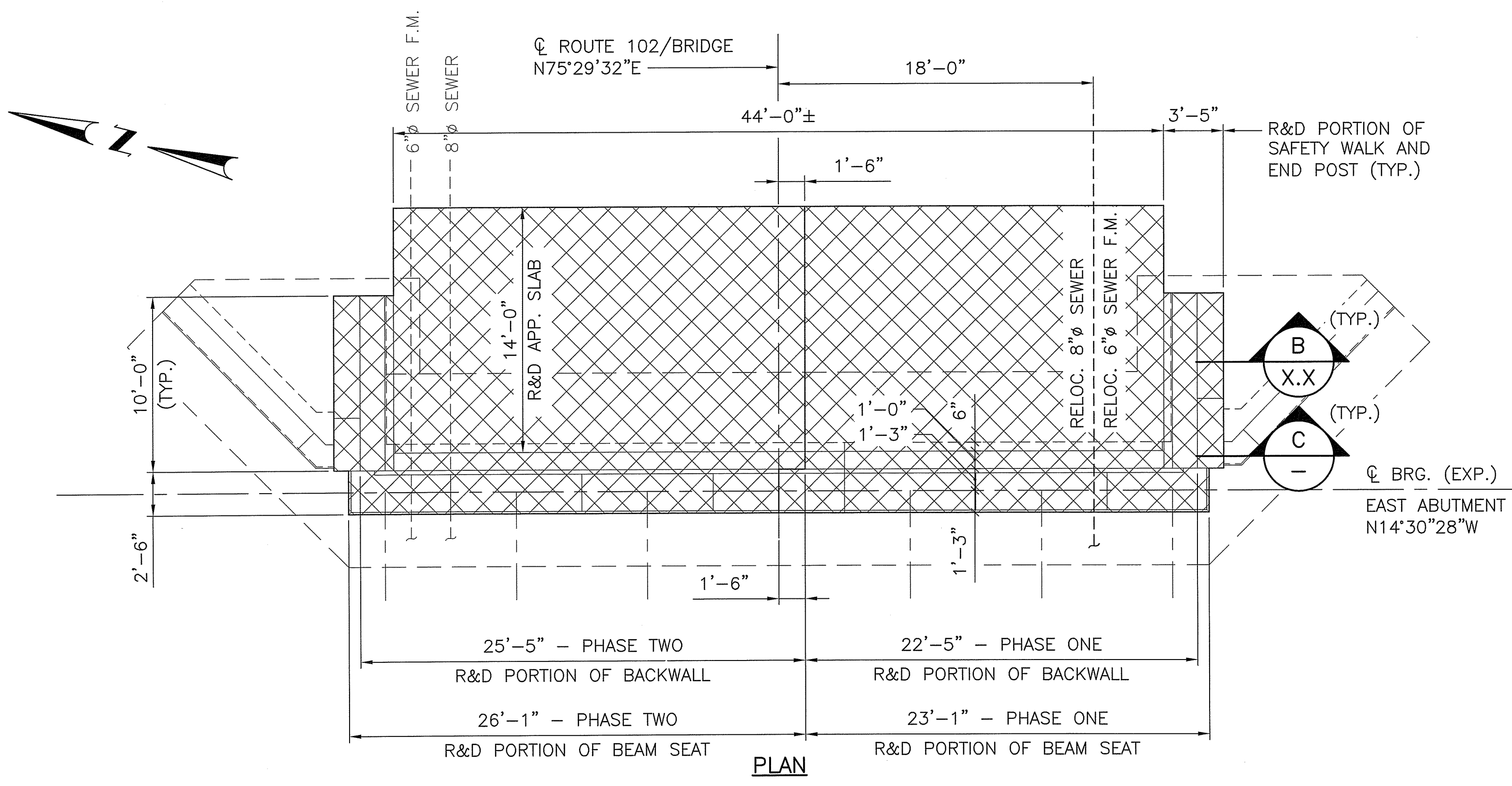
**BRIDGE REPLACEMENT
MOHEGAN BRIDGE
BRIDGE No. 673 (43A)**

BURRILLVILLE, RHODE ISLAND

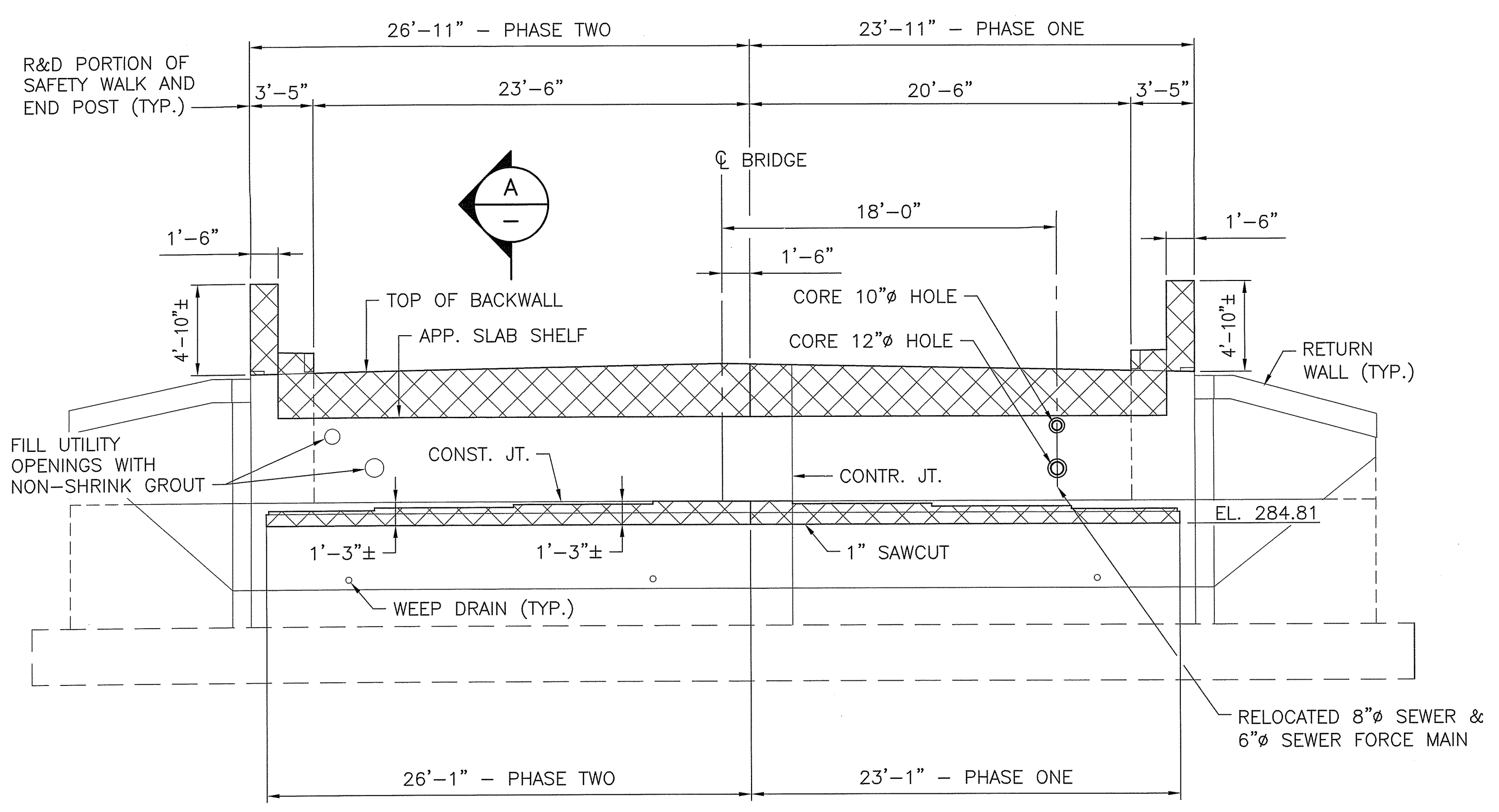
BRIDGE GENERAL PLAN

CHECKED BY _____ DATE _____ SCALE AS SHOWN

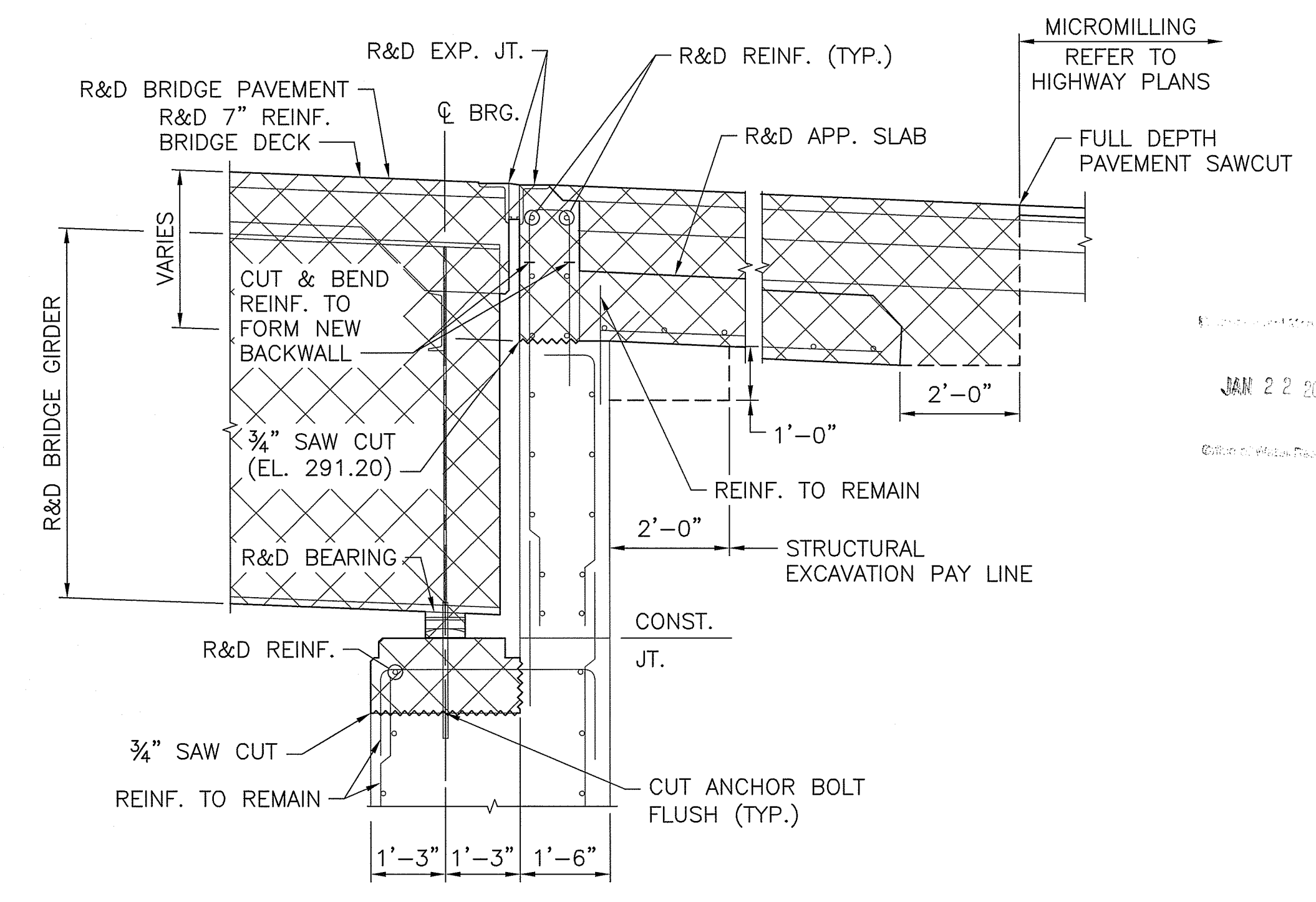
F:\1500016000.00 Bridge Group\04 - Mohegan\1 Drawings\Structural\Comm\Drawings\0401\1_Plan_GENERAL.dwg, 1/22/20 14:27:37 PM, RMM



PLAN

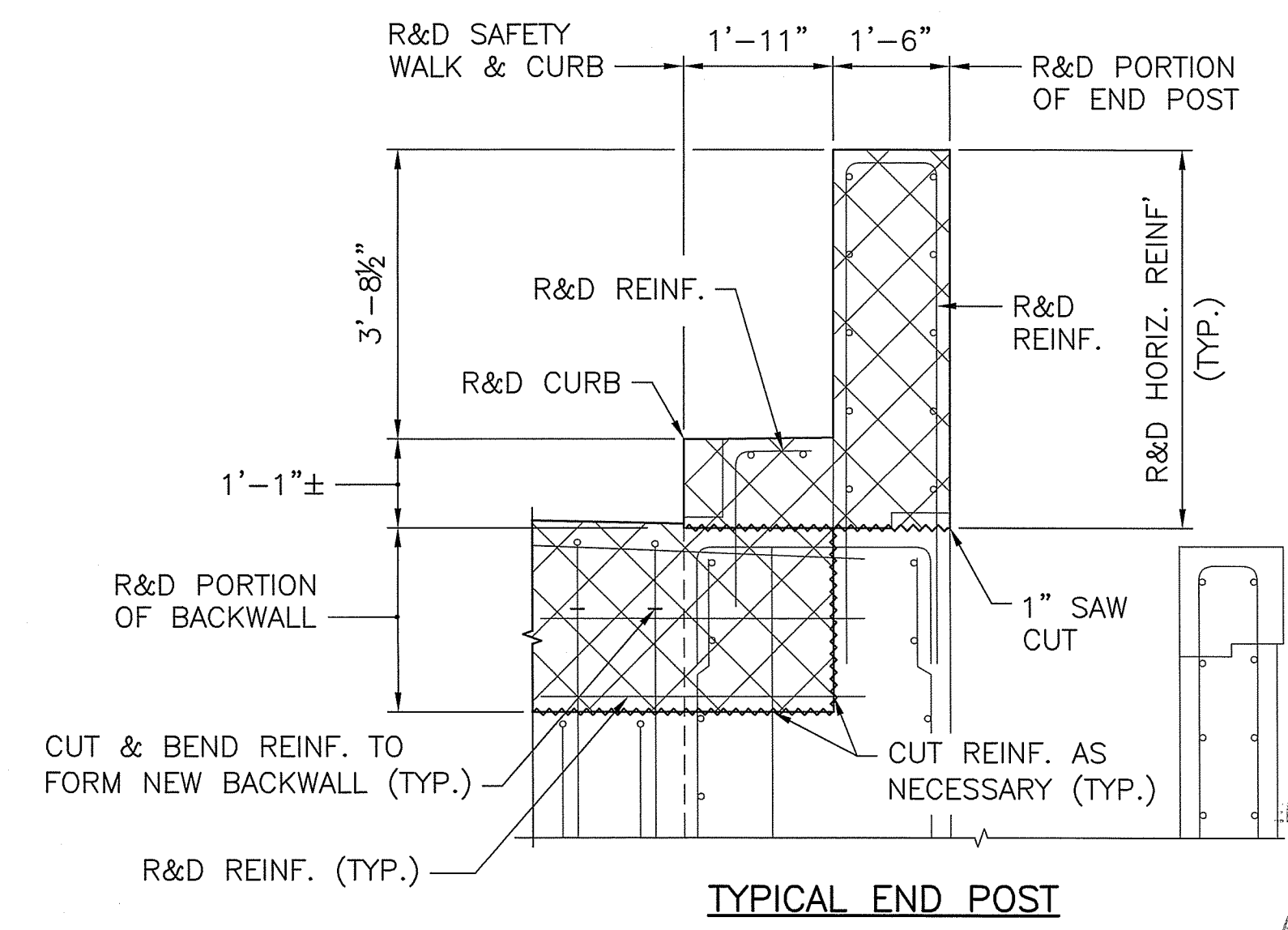


**ELEVATION
EAST ABUTMENT**
SCALE: 3/16"=1'-0"



TYPICAL EAST ABUTMENT

SECTION A
SCALE: 1/2"=1'-0"



TYPICAL END POST

SECTION C
SCALE: 1/2"=1'-0"

LEGEND
 DENOTES AREA TO BE REMOVED AND DISPOSED

THOMAS M. CUNNINGHAM
 REGISTERED PROFESSIONAL ENGINEER (CIVIL)
 P.E. 0006592

COMMONWEALTH
 ENGINEERS & CONSULTANTS, INC.
 400 SMITH STREET
 PROVIDENCE, RI 02908

| REVISIONS | | |
|-----------|------|----|
| NO. | DATE | BY |
| | | |
| | | |
| | | |

DEPARTMENT OF ENVIRONMENTAL MANAGEMENT
 OFFICE OF WATER RESOURCES
 FRESHWATER WETLANDS PROGRAM
 APPROVED WITH CONDITIONS
 AS SPECIFIED IN THE LETTER OF APPROVAL
 DATED JUN 02 2020 FILE # 20-0025
 NO CHANGES ALLOWED WITHOUT PRIOR APPROVAL
 APPROVED PLANS MUST BE AT CONSTRUCTION SITE

**RHODE ISLAND
 DEPARTMENT OF TRANSPORTATION**

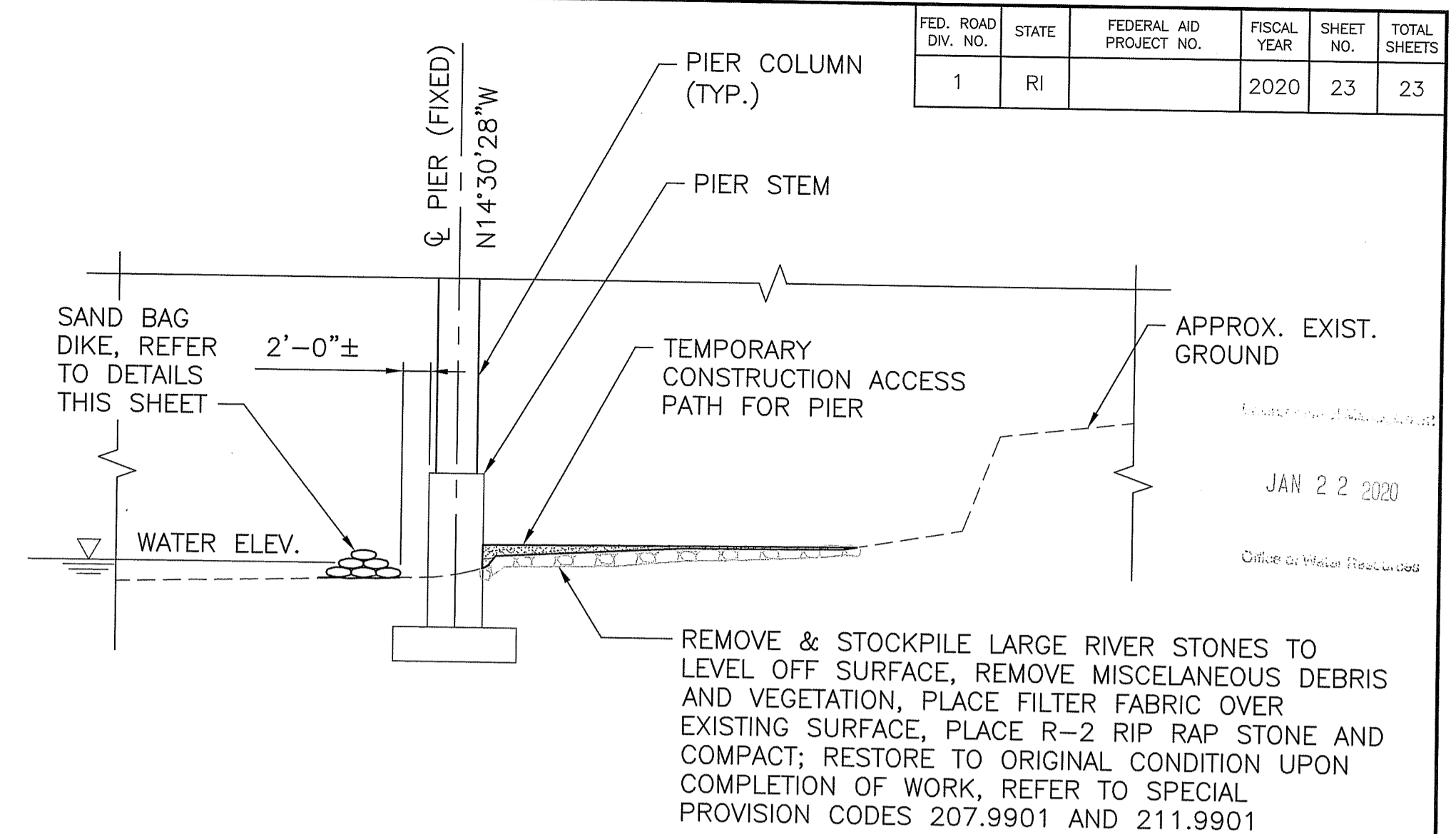
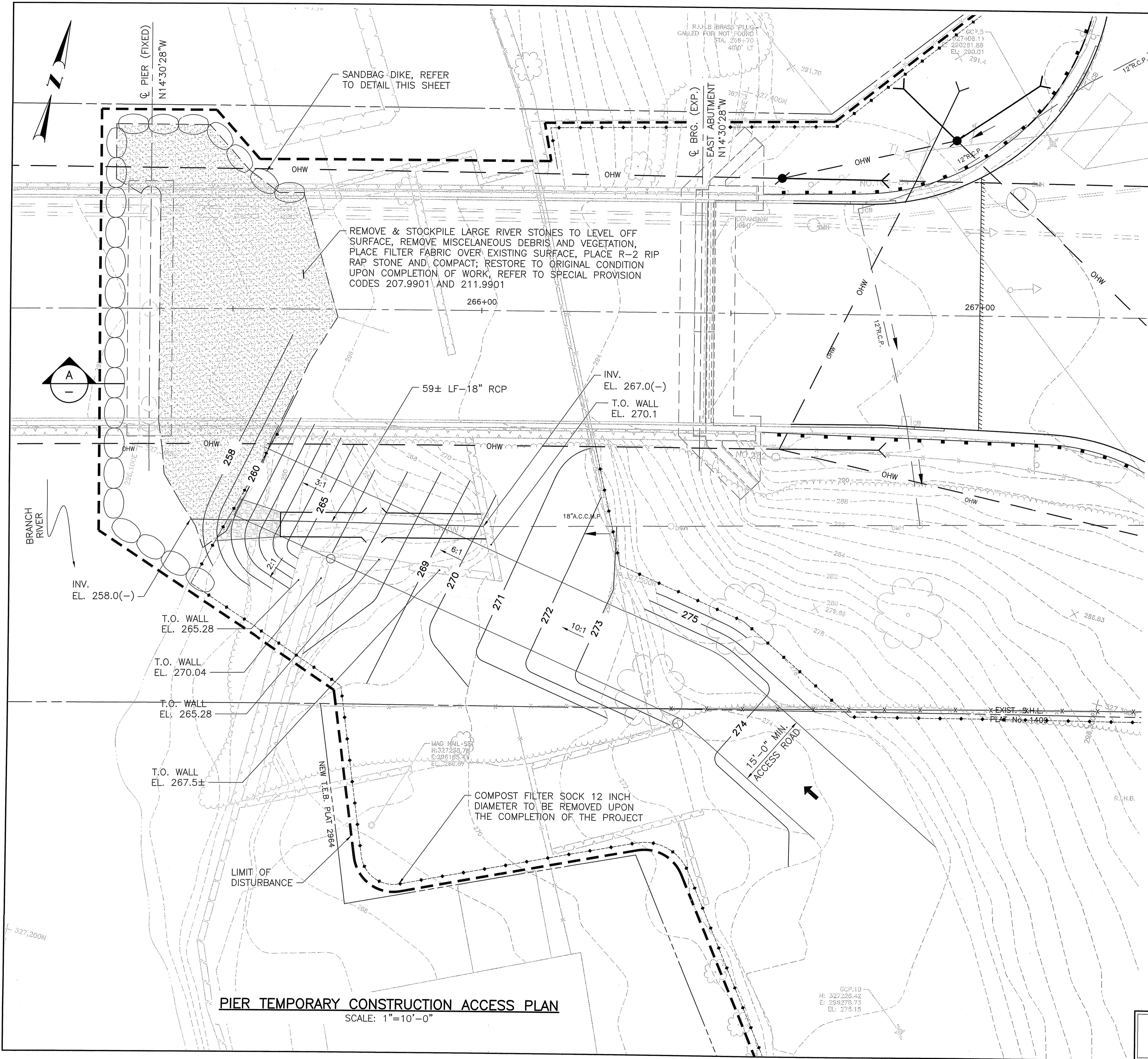
**BRIDGE REPLACEMENT
 MOHEGAN BRIDGE
 BRIDGE No. 673 (43A)**
 BURRILLVILLE, RHODE ISLAND

**SUBSTRUCTURE DEMOLITION
 SHEET 2**

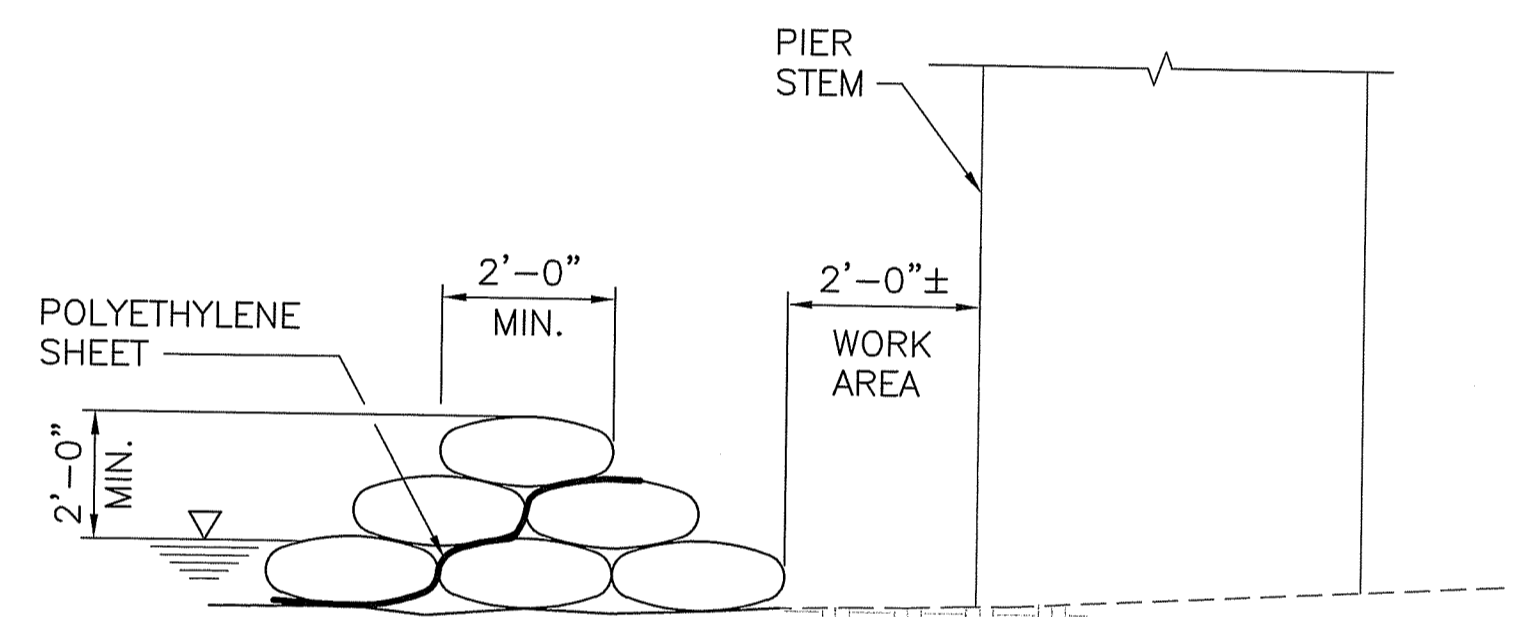
CHECKED BY _____ DATE _____ SCALE AS SHOWN
 RIDEM SUBMISSION - JANUARY 22, 2020

P:\190001\2020-20 Bridge Design\344 - Mohegan\Drawings\Substructure\Current\Drawings\673A_V1_010_25102003.dwg, 1/22/2020 1:53:35 PM, RWL

| FED. ROAD DIV. NO. | STATE | FEDERAL AID PROJECT NO. | FISCAL YEAR | SHEET NO. | TOTAL SHEETS |
|--------------------|-------|-------------------------|-------------|-----------|--------------|
| 1 | RI | | 2020 | 23 | 23 |



Kindly be advised that this Permit is not equivalent to a verification of the type or extent of freshwater wetlands on site.

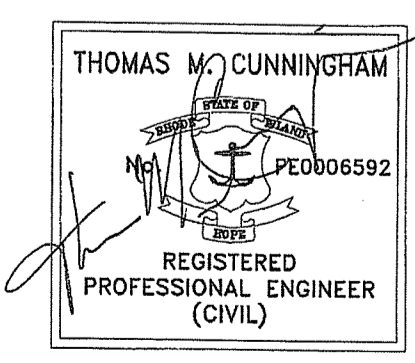


- NOTES:**
1. ACTUAL SANDBAG DIKE DIMENSIONS TO BE DETERMINED BY THE CONTRACTOR BASED ON ANTICIPATED SITE CONDITIONS DURING THE WORK PERIOD.
 2. SANDBAGS SHALL BE IN ACCORDANCE WITH SECTION 207 OF THE STANDARD SPECIFICATIONS.
 3. SANDBAG DIKE SHALL BE PAID FOR UNDER ITEM CODE 207.9901, "CONTROL OF WATER".

SCHEMATIC SANDBAG DIKE DETAIL
NOT TO SCALE

DEWATERING BASIN NOTES:

1. LOCATION FOR DEWATERING BASIN SHALL BE BASED ON ACTUAL CONSTRUCTION OPERATIONS AND SHALL BE APPROVED BY THE ENGINEER AS REQUIRED.
2. REFER TO R.I. STD. 9.7.0 FOR DEWATERING BASIN.



COMMONWEALTH
ENGINEERS & CONSULTANTS, INC.
400 SMITH STREET
PROVIDENCE, RI 02908

| REVISIONS | | |
|-----------|------|----|
| NO. | DATE | BY |
| | | |
| | | |
| | | |
| | | |
| | | |
| | | |
| | | |
| | | |
| | | |

RHODE ISLAND
DEPARTMENT OF TRANSPORTATION
BRIDGE REPLACEMENT
MOHEGAN BRIDGE
BRIDGE No. 673 (43A)
BURRILLVILLE, RHODE ISLAND

MISCELLANEOUS DETAILS

CHECKED BY _____ DATE _____ SCALE AS SHOWN
RIDEM SUBMISSION - JANUARY 22, 2020