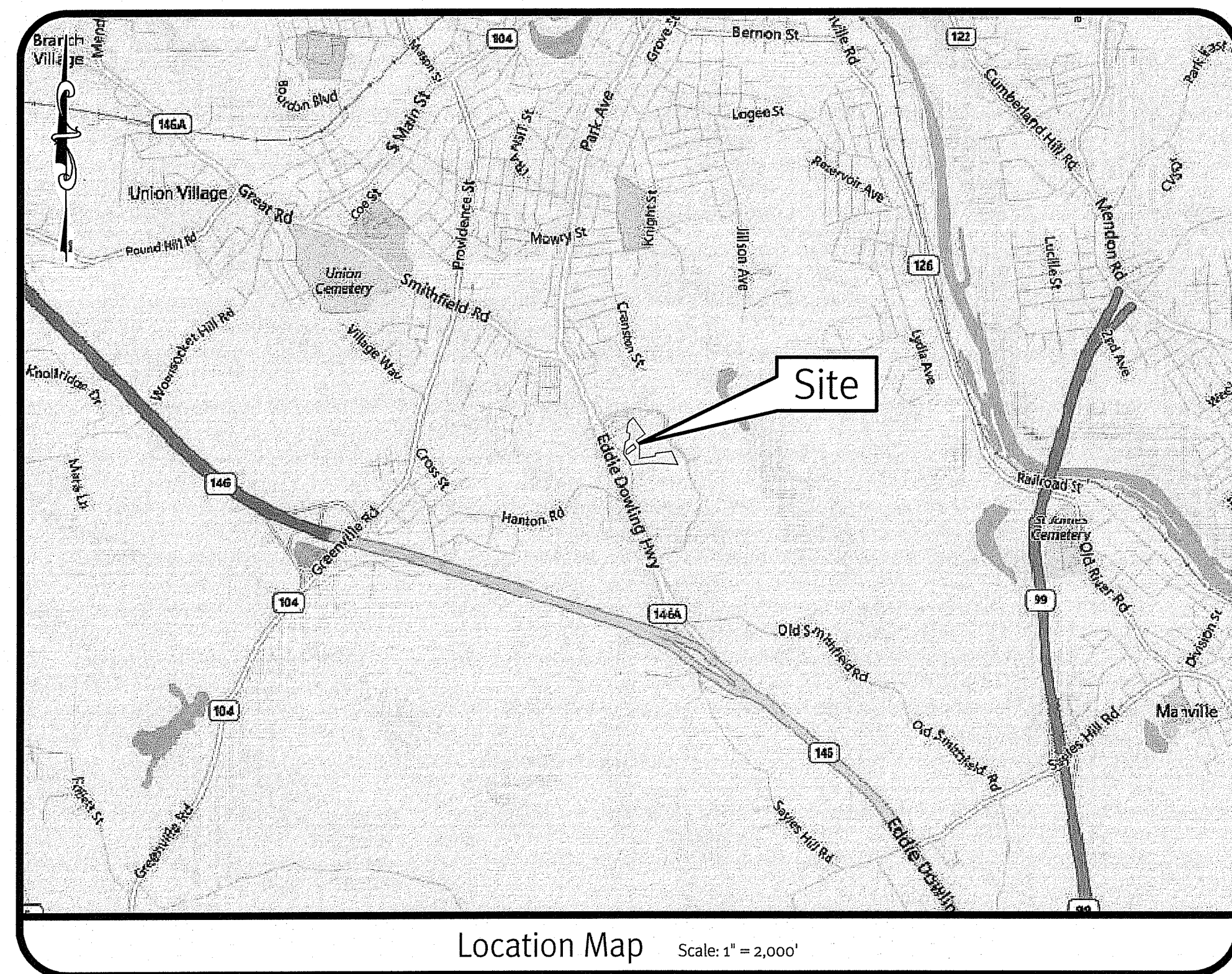


Preliminary Determination Submission

Old Louisquisset Condos

Old Louisquisset Pike
 North Smithfield, Rhode Island
 Assessor's Plat 13 Lots 143 & 123



Sheet Index

- 1 Cover Sheet
- 2 Aerial Half-Mile Radius & USGS Map
- 3 Notes and Legend
- 4 Boundary-Topographic Survey
- 5 Existing Analysis Plan
- 6 Soil Erosion Control Plan
- 7 Site Layout Plan
- 8 Grading, Drainage and Utilities Plan
- 9 Infiltration Plan
- 10 Profiles
- 11 Detail Sheet-1
- 12 Detail Sheet-2

DEPARTMENT OF ENVIRONMENTAL MANAGEMENT
 OFFICE OF WATER RESOURCES
 FRESHWATER WETLANDS PROGRAM
 APPROVED WITH CONDITIONS
 AS SPECIFIED IN THE LETTER OF APPROVAL
 DATED OCT 22 2020 FILE # 20-0081
 NO CHANGES ALLOWED WITHOUT PRIOR APPROVAL
 APPROVED PLANS MUST BE AT CONSTRUCTION SITE

Environmental Management
 SEP 30 2020
 Office of Water Resources

Cover Sheet
Old Louisquisset Condos
 Assessor's Plat 13 Lots 143 & 123
 North Smithfield, Rhode Island
 Prepared for
BBWW, LLC c/o Brian Bucci
 P.O. Box 6187, Warwick, Rhode Island 02887

SESC / O&M
 The Soil Erosion and Sediment Control Plan (SESC) and Stormwater Operation and Maintenance Plan (O&M) are required documents with this plan set and must be maintained by the contractor and owner on site.

JASON P. CLOUGH
 No. [Signature]
 REGISTERED
 PROFESSIONAL ENGINEER
 CIVIL

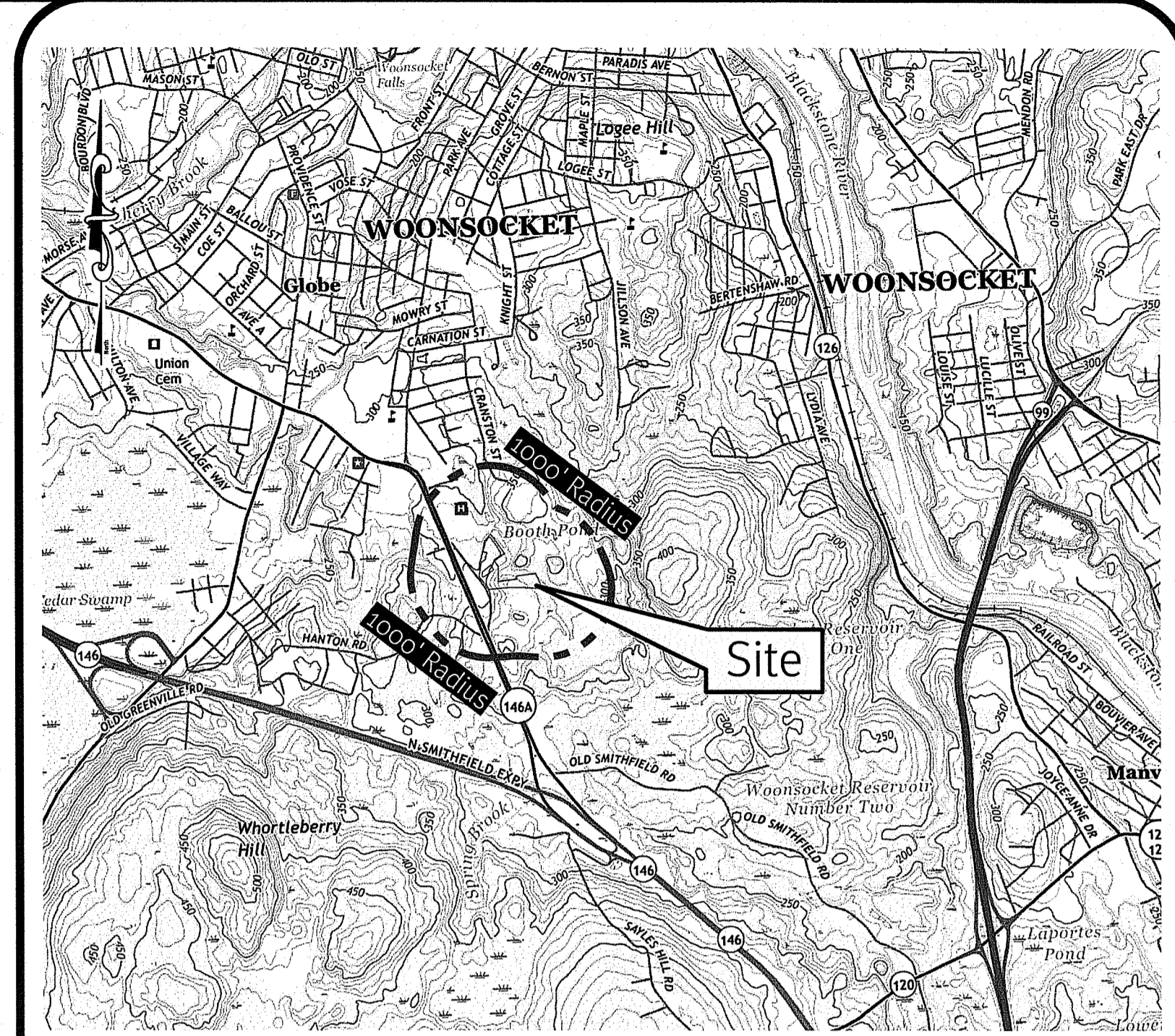
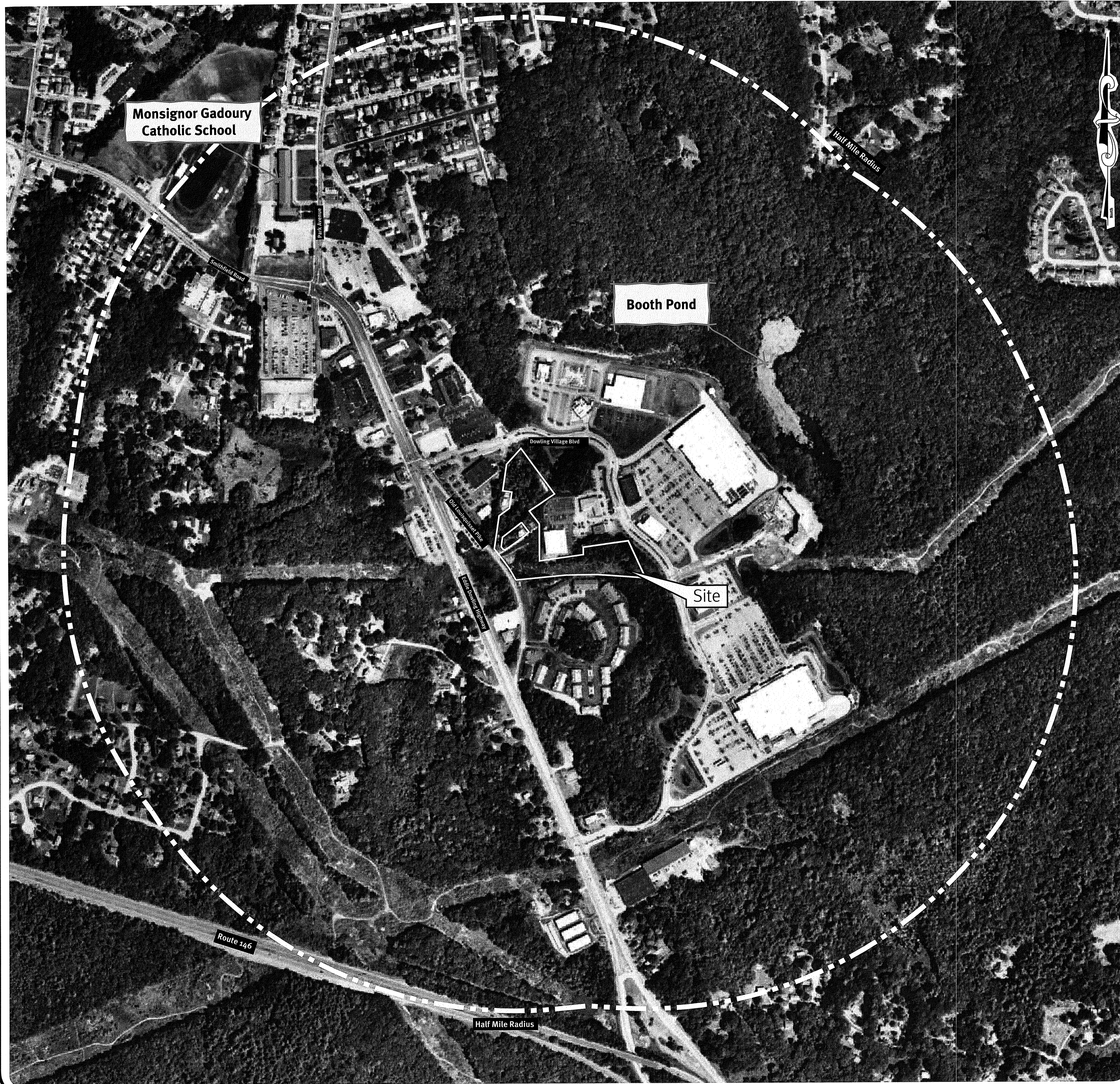
This plan set must not be used for construction purposes unless stamped 'Issued for Construction' and stamped by a registered Professional Engineer or Project Engineer.
 DiPrete Engineering only warrants plans on a DiPrete Engineering project. DiPrete Engineering does not warrant plans by any other party.
 The contractor is responsible for all of the means, methods, safety and implementation of this plan and design.
 Existing utilities shown on this plan are approximate only. DiPrete Engineering assumes no responsibility for damages incurred due to locations of existing utilities. See Utility Note on sheet 3.

No.	Date	Description	Drawn By: N.D.K.	Design By: J.P.C.
1	09-24-2020	Preliminary Determination BEIC	N.D.K.	J.P.C.
2	08-03-2020	Preliminary Determination BEIC	N.D.K.	J.P.C.
3	09-03-2020	Preliminary Determination Submission	N.D.K.	J.P.C.

DiPrete Engineering
 Two Stafford Court Cranston, RI 02920
 tel 401-943-1000 fax 401-464-6006 www.diprete-eng.com
Boston • Providence • Newport

z:\demian\projects\0617-004-12 old louisquisset condos\autocad drawings\0617-004-cov.dwg Plotdate: 9/28/2020

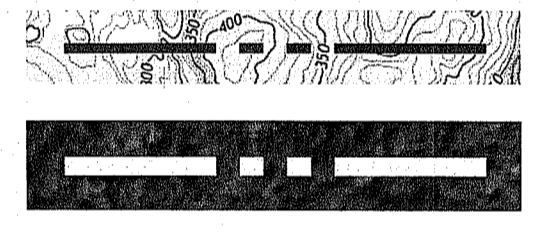
z:\demain\projects\0617-004-112 old louisquisset condos\avocad.drawing\0617-004-cv-ar.dwg Plottext: 9/28/2020



USGS Map Scale: 1"=2000'

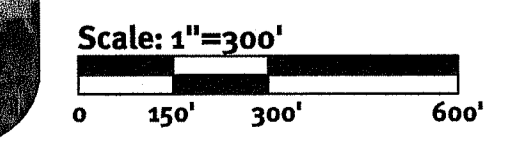
Legend

- 1000' RADIUS LINE
- HALF MILE RADIUS LINE



SEP 30 2020

Photo Obtained from Near Map. Date of Photography 08/09/2019.



DEPARTMENT OF ENVIRONMENTAL MANAGEMENT
 OFFICE OF WATER RESOURCES
 FRESHWATER WETLANDS PROGRAM
 APPROVED WITH CONDITIONS
 AS SPECIFIED IN THE LETTER OF APPROVAL
 DATED OCT 22 2020 FILE # 20-0081
 NO CHANGES ALLOWED WITHOUT PRIOR APPROVAL
 APPROVED PLANS MUST BE AT CONSTRUCTION SITE

Martin D. Senczek

JASON P. CLOUGH
 No. [Signature]
 REGISTERED PROFESSIONAL ENGINEER
 CIVIL

No.	Date	Description	By
1	08-22-2020	PRELIMINARY DETERMINATION SUBMISSION	N.D.K.
2	09-22-2020	PRELIMINARY DETERMINATION SUBMISSION	N.D.K.
3	09-22-2020	PRELIMINARY DETERMINATION SUBMISSION	N.D.K.

Design By: J.P.C.
 Drawn By: N.D.K.

Aerial Half-Mile Radius & USGS Map
Old Louisquisset Condos
 Assessor's Plat 13 Lots 143 & 123
 North Smithfield, Rhode Island
BBWW, LLC c/o Brian Bucci
 P.O. Box 6187, Warwick, Rhode Island 02887

DiPrete Engineering
 Two Stafford Court Cranston, RI 02920
 tel. 401-943-1000 fax. 401-464-6006 www.diprete-eng.com

Boston • Providence • Newport

This plan set may not be used for construction purposes unless stamped 'Issued for Construction' and stamped by a registered Professional Engineer of DiPrete Engineering.
 DiPrete Engineering only warrants plans on a DiPrete Engineering stamp. DiPrete Engineering does not warrant plans by any other party.
 The contractor is responsible for all of the means, methods, safety precautions and requirements, and OSHA compliance in the implementation of this plan and design.
 Erosion utilities shown on this plan are approximate only. DiPrete Engineering does not warrant the accuracy of these utilities or the locations of existing utilities. See 'Utility Note' on sheet 3.

General Notes:

- 1. THE SITE IS LOCATED ON THE TOWN OF NORTH SMITHFIELD ASSESSOR'S PLAT 13 LOTS 143 & 123.
2. THE SITE IS APPROXIMATELY 5.67± ACRES AND IS ZONED BH.
3. THIS SITE IS LOCATED IN FEMA FLOOD ZONES X (UNSHADED). REFERENCE FEMA FLOOD INSURANCE RATE MAP 44007C0157G, MAP REVISED MARCH, 2 2009.
4. THE BOUNDARY LINE AS SHOWN ON THIS PLAN DEPICTS THE RESULTS OF A CLASS I BOUNDARY RETRACEMENT SURVEY AS PERFORMED BY DIPRETE ENGINEERING ASSOCIATES, INC.
5. CONTOUR DATA SHOWN ON THIS BOUNDARY/TOPOGRAPHY PLAN CONFORMS TO A 4-4 TOPOGRAPHICAL SURVEY STANDARD AS ADOPTED BY THE RHODE ISLAND BOARD OF REGISTRATION FOR PROFESSIONAL LAND SURVEYORS.
6. ALL WORK PERFORMED HEREIN IS TO BE COVERED BY CURRENT EDITIONS OF THE RHODE ISLAND STANDARD SPECIFICATION FOR ROAD AND BRIDGE CONSTRUCTION.
7. THE SITE IS WITHIN A: NATURAL HERITAGE AREAS (RIDEM)
8. THE FOLLOWING DOCUMENTS ARE CONSIDERED PART OF THE PROJECT PLANS AND THE CONTRACTOR/ OWNER MUST MAINTAIN THESE DOCUMENTS AS PART OF A FULL PLAN SET.
9. THIS PLAN SET REFERENCES RIDOT STANDARD DETAILS (DESIGNATED AS RIDOT STD X.X.X.), RIDOT STANDARD DETAILS ARE AVAILABLE FROM RIDOT AND ONLINE AT: HTTP://WWW.RIDOT.RI.GOV/BUSINESS/CONTRACTORSANDCONSULTANTS.PHP.
10. THE SITE IS TO BE SERVICED BY PUBLIC WATER AND PUBLIC SEWER.
11. THE DRAINAGE SYSTEM IS DESIGNED TO MEET THE NORTH SMITHFIELD SUBDIVISION AND LAND DEVELOPMENT REGULATIONS WITH THE USE OF PERVIOUS PAVEMENT, AND STORAGE AND INFILTRATING AREAS BENEATH THE PAVEMENT.
12. THE SITE IS PROPOSED TO BE BUILT IN (1) PHASE.
13. SOIL EVALUATIONS, WERE COMPLETED BY DIPRETE ENGINEERING ON FEBRUARY 3, 2020.
14. ANY PROPRIETARY PRODUCTS REFERENCED IN THIS PLAN SET ARE REPRESENTATIVE OF THE MINIMUM DESIGN REQUIREMENTS FOR THE PURPOSE IT PROPOSES TO SERVE.
15. THIS PLAN SET MAY REFERENCE AND/ OR INCLUDE REPRODUCTIONS OF PROPRIETARY PRODUCTS/ DETAILS BY OTHERS, AND/ OR THEIR ASSOCIATED SPECIFICATIONS.
Soil Information: (REFERENCE: SOIL MAPPING OBTAINED FROM RIGIS. SOIL GEOGRAPHIC DATA DEVELOPED BY THE RHODE ISLAND SOIL SURVEY PROGRAM IN PARTNERSHIP WITH THE NATIONAL COOPERATIVE SOIL SURVEY)
Soil Name Description
Cec CANTON AND CHARLTON FINE SANDY LOAMS, VERY ROCKY, 3 TO 15 PERCENT SLOPES
Rf RIDGEBURY, WHITMAN, AND LEICESTER EXTREMELY STONY FINE SANDY LOAMS

Soil Erosion and Sedimentation Control Notes:

- 1. THE CONTRACTOR IS RESPONSIBLE FOR ALL SOIL EROSION AND SEDIMENT CONTROL ON SITE WHICH MUST BE CONSTRUCTED AND MAINTAINED IN ACCORDANCE WITH THE APPLICABLE REGULATIONS AND AUTHORITY HAVING JURISDICTION.
2. ALL EROSION CONTROL INCLUDING (BUT NOT LIMITED TO) TEMPORARY SWALES, TEMPORARY SEDIMENT TRAPS, ETC. TO BE INSTALLED PER THE LATEST EDITION OF THE RHODE ISLAND SOIL EROSION AND SEDIMENTATION CONTROL (RISESS) HANDBOOK AND THE SOIL EROSION & SEDIMENTATION CONTROL PLAN(S).
3. IF NEEDED TEMPORARY SWALES ARE TO BE USED TO CONTROL RUNOFF DURING CONSTRUCTION OF PROPOSED SITE WORK.
4. IF NEEDED INLET PROTECTION IS TO BE INSTALLED ON ALL CATCH BASINS ONCE CONSTRUCTED.
5. FOR SEQUENCE OF CONSTRUCTION, PROJECT PHASING AND CONSTRUCTION PHASING SEE SESS PLAN.
6. CONTRACTOR MAY MODIFY SEQUENCE OF CONSTRUCTION WITH APPROVAL FROM DESIGN ENGINEER AND OWNER.
7. IF CONCRETE TRUCKS ARE WASHED OUT ON SITE, ALL WASHOUT MUST BE COMPLETED IN THE DESIGNATED CONCRETE WASHOUT AREA.

Demolition Notes:

- 1. CONTRACTOR TO OBTAIN ALL FEDERAL, STATE, AND MUNICIPAL APPROVALS PRIOR TO THE START OF CONSTRUCTION.
2. CONTRACTOR TO PERFORM DAILY SWEEPING AT CONSTRUCTION ENTRANCE DURING DEMOLITION AND CONSTRUCTION TO MINIMIZE SEDIMENTS ON EXTERNAL STREETS.
3. ANY EXISTING BUILDING(S) AND PROPERTY PROPOSED TO REMAIN WHICH ARE DAMAGED BY THE CONTRACTOR MUST BE REPAIRED BY THE CONTRACTOR AT NO ADDITIONAL COST TO THE OWNER.
4. CONTRACTOR IS RESPONSIBLE FOR REMOVING AND LEGALLY DISPOSING (R&D) ALL MATERIALS INDICATED ON THE PLANS UNLESS SPECIFIED OTHERWISE HERE IN.
5. IN ADDITION TO THOSE AREAS SPECIFICALLY DESIGNATED ON THE PLANS, ALL DISTURBED AREAS INCLUDING THE CONTRACTOR'S STOCKPILE AND STAGING AREAS WITHIN THE LIMIT OF WORK MUST BE RESTORED TO MATCH THE DESIGN PLANS.
6. CONTRACTOR MUST DOCUMENT LOCATION OF ALL SUBSURFACE UTILITIES REMAINING IN PLACE AFTER DEMOLITION (ACTIVE AND INACTIVE/ABANDONED).
Traffic Notes:
1. ALL TRAFFIC CONTROL MUST CONFORM TO THE FEDERAL HIGHWAY ADMINISTRATION (FHWA) MANUAL ON UNIFORM TRAFFIC CONTROL DEVICES (MUTCD) CURRENT EDITION.
2. DURING CONSTRUCTION, TRAFFIC CONES ARE TO BE USED FOR SEPARATION OF ACTIVE TRAFFIC FROM WORK ZONE PER MUTCD REQUIREMENTS.
3. DURING CONSTRUCTION FLAGGERS MUST BE EMPLOYED TO ENSURE SAFETY FOR INTERACTION OF CONSTRUCTION VEHICLES AND ACTIVE TRAFFIC.
4. ALL SIGNS, FLAGGERS, TRAFFIC CONTROL DEVICES, AND TEMPORARY TRAFFIC ZONE ACTIVITIES MUST MEET THE REQUIREMENTS OF THE MANUAL ON UNIFORM TRAFFIC (MUTCD) LATEST EDITION AND SUBSEQUENT ADDENDA.
5. TEMPORARY CONSTRUCTION SIGNS MUST BE MOUNTED ON RIDOT APPROVED SUPPORTS AND MUST BE REMOVED OR COVERED WHEN NOT APPLICABLE.

Traffic Notes:

- 1. ALL TRAFFIC CONTROL MUST CONFORM TO THE FEDERAL HIGHWAY ADMINISTRATION (FHWA) MANUAL ON UNIFORM TRAFFIC CONTROL DEVICES (MUTCD) CURRENT EDITION.
2. DURING CONSTRUCTION, TRAFFIC CONES ARE TO BE USED FOR SEPARATION OF ACTIVE TRAFFIC FROM WORK ZONE PER MUTCD REQUIREMENTS.
3. DURING CONSTRUCTION FLAGGERS MUST BE EMPLOYED TO ENSURE SAFETY FOR INTERACTION OF CONSTRUCTION VEHICLES AND ACTIVE TRAFFIC.
4. ALL SIGNS, FLAGGERS, TRAFFIC CONTROL DEVICES, AND TEMPORARY TRAFFIC ZONE ACTIVITIES MUST MEET THE REQUIREMENTS OF THE MANUAL ON UNIFORM TRAFFIC (MUTCD) LATEST EDITION AND SUBSEQUENT ADDENDA.
5. TEMPORARY CONSTRUCTION SIGNS MUST BE MOUNTED ON RIDOT APPROVED SUPPORTS AND MUST BE REMOVED OR COVERED WHEN NOT APPLICABLE.

As-Built Notes:

ALL COMPONENTS OF THE DRAINAGE, SEWER, AND WATER SYSTEMS MUST BE AS-BUILT PRIOR TO COVERING. ENGINEER TO BE NOTIFIED PRIOR TO COVERING TO SURVEY AS-BUILT LOCATIONS. ENGINEER WILL NOT ACCEPT FIELD MEASUREMENTS FROM THE SITE CONTRACTOR.

Layout and Materials:

- 1. DIMENSIONS ARE FROM THE FACE OF CURB, FACE OF BUILDING, FACE OF WALL, AND CENTER LINE OF PAVEMENT MARKINGS, UNLESS OTHERWISE NOTED.
2. CURBING TO BE PRECAST CONCRETE OR AS LABELED ON THE PLANS.
3. SIDEWALK TO BE CONCRETE OR AS LABELED ON THE PLANS.
4. SYMBOLS AND LEGENDS OF PROJECT FEATURES ARE GRAPHIC REPRESENTATIONS AND ARE NOT NECESSARILY SCALED TO THEIR ACTUAL DIMENSIONS OR LOCATIONS ON THE DRAWINGS.
5. SEE ARCHITECTURAL DRAWINGS FOR EXACT BUILDING DIMENSIONS AND DETAILS CONTIGUOUS TO THE BUILDING, INCLUDING SIDEWALKS, RAMPS, BUILDING ENTRANCES, STAIRWAYS, UTILITY PENETRATIONS, CONCRETE DOOR PADS, COMPACTOR PAD, LOADING DOCKS, BOLLARDS, ETC.
6. PROPOSED BOUNDS AND ANY EXISTING PROPERTY LINE MONUMENTATION DISTURBED DURING CONSTRUCTION MUST BE SET OR RESET BY A PROFESSIONAL LICENSED SURVEYOR.
7. CONTRACTOR MUST NOT RELY SOLELY ON ELECTRONIC VERSIONS OF PLANS, SPECIFICATIONS, AND DATA FILES THAT ARE OBTAINED FROM THE DESIGNERS.
8. ALL GUARDRAIL ONSITE MUST BE STEEL BACKED TIMBER GUARDRAIL WITH STEEL POSTS, IN CONFORMANCE WITH SECTION 5.4.1.7 OF THE AASHTO ROADSIDE DESIGN GUIDE.

Grading and Utility Notes:

- 1. CONSTRUCTION TO COMMENCE FALL 2020 OR UPON RECEIPT OF ALL NECESSARY APPROVALS.
2. THE CONTRACTOR MUST COORDINATE WITH ALL OF THE APPROPRIATE UTILITY COMPANIES FOR AGREEMENTS TO SERVICE THE PROPOSED BUILDING.
3. THE CONTRACTOR IS RESPONSIBLE FOR DETERMINING FINISH GRADING AND DRAINAGE AROUND THE BUILDING TO ENSURE SURFACE WATER AND/OR GROUNDWATER ARE DIRECTED AWAY FROM THE STRUCTURE.
4. PRIOR TO START OF CONSTRUCTION, CONTRACTOR MUST VERIFY EXISTING PAVEMENT ELEVATIONS AT INTERFACE WITH PROPOSED PAVEMENTS, AND EXISTING GROUND ELEVATIONS ADJACENT TO DRAINAGE OUTLETS TO ASSURE PROPER TRANSITIONS BETWEEN EXISTING AND PROPOSED FACILITIES.
5. ALL PROPOSED UNDERGROUND UTILITIES SERVING THE SITE AND BUILDINGS TO BE COORDINATED WITH OWNER, ARCHITECT, AND ENGINEER PRIOR TO INSTALLATION.
6. ALL RETAINING WALLS AND STEEP SLOPES ARE SUBJECT TO FINAL STRUCTURAL DESIGN.
7. ALL CUT AND FILL AREAS ARE TO BE DONE UNDER THE DIRECTION OF A PROFESSIONAL GEOTECHNICAL ENGINEER WITH TESTING AND CERTIFICATION TO BE PROVIDED TO THE APPLICANT AT THE COMPLETION OF THE PROJECT.
8. NO STOCKPILING OF MATERIAL TO BE LOCATED IN THE RIGHT OF WAY AND NO OPEN TRENCHES ARE TO BE LEFT OVERNIGHT.
9. ALL LOAM IN DISTURBED AREAS IS TO BE STOCKPILED FOR FUTURE USE.
10. ALL EXCESS SOIL, TREES, ROCKS, BOLLARDS, AND OTHER REFUSE, MUST BE DISCARDED OFF SITE IN AN ACCEPTABLE MANNER AT AN APPROVED LOCATION.
11. THE SITE WILL HAVE 6" CONCRETE CURBING, SITE GRADING/CONTOURS SHOWN ON THE PLANS DO NOT NECESSARILY REFLECT THE APPROPRIATE BERM/CURBING REVEAL.
12. NO STUMP DUMPS ARE PROPOSED ON SITE.

Drainage:

ALL DRAINAGE PIPING TO BE HIGH-DENSITY POLYETHYLENE (HDPE) WITH WATERTIGHT JOINTS WHERE INSTALLED WITHIN THE SEASONAL HIGH GROUNDWATER, UNLESS NOTED OTHERWISE ON THE PLANS OR IN THE SPECIFICATIONS.
DRAINAGE STRUCTURES TO BE AS FOLLOWS (UNLESS OTHERWISE NOTED ON PLANS):
• MANHOLES TO BE RIDOT STD. 4.2.0, 4.2.1 OR 4.2.2 AS REQUIRED
ALL DRAINAGE STRUCTURES MUST BE WATERTIGHT.

DRAINAGE CONNECTIONS FROM ALL YARD DRAINS (YD), AREA DRAINS (AD), TRENCH DRAINS (TD), FRENCH DRAINS (FD), WALL DRAINS (WD), AND DOWNSPOUTS (DS) ARE SHOWN FOR SCHEMATIC PURPOSES ONLY.
SANITARY SEWER: ALL SANITARY SEWER PIPING TO BE SDR 35 UNLESS NOTED OTHERWISE ON THE PLANS OR IN THE SPECIFICATIONS.

Sanitary Sewer:

ALL SANITARY SEWER PIPING TO BE SDR 35 UNLESS NOTED OTHERWISE ON THE PLANS OR IN THE SPECIFICATIONS. ALL SEWER IMPROVEMENTS MUST COMPLY WITH THE WOONSOCKET WASTEWATER TREATMENT RULES AND REGULATIONS AND ANY APPLICABLE AUTHORITY HAVING JURISDICTION, INCLUDING (BUT NOT LIMITED TO) MATERIALS, DIMENSIONS AND ACCESS COVERS.
WATER: ALL WATER MAINS TO BE CONCRETE LINED DUCTILE IRON PIPE (CLDIP).

Water:

ALL WATER MAINS TO BE CONCRETE LINED DUCTILE IRON PIPE (CLDIP). ALL WATER MAIN IMPROVEMENTS MUST COMPLY WITH THE WOONSOCKET WATER REGULATIONS AND ANY APPLICABLE AUTHORITY HAVING JURISDICTION, INCLUDING (BUT NOT LIMITED TO) MATERIALS, DIMENSIONS AND ACCESS COVERS.
CONCRETE: VAN ADA SPACE PAVEMENT MARKINGS MUST COMPLY WITH ALL ADA AND MUTCD REGULATIONS AND REQUIREMENTS.

IN THE CASE OF ANY NEW HYDRANT INSTALLED IN OR NEXT TO AN EXISTING SIDEWALK, THE CONTRACTOR MUST INCREASE THE WIDTH OF THE SIDEWALK, AS NECESSARY, TO MAINTAIN A MINIMUM OF 3'-0" CLEAR WIDTH FROM THE OUTERMOST COMPONENTS OF THE HYDRANT TO THE EDGE OF THE SIDEWALK.

Electric/Telecom/Gas:

PROPOSED GAS, ELECTRIC, CABLE AND DATA UTILITIES ARE SHOWN SCHEMATICALLY AND ARE PROPOSED TO BE UNDERGROUND.
SITE LIGHTING: SITE LIGHTING (TEMPORARY AND PERMANENT) MUST BE DIRECTED AWAY FROM AND SHIELDED FROM ENVIRONMENTALLY SENSITIVE AREAS AND ABUTTING LANDS.

Site Lighting:

PER THE CODE OF FEDERAL REGULATIONS - TITLE 29, PART 1926 IT IS THE SITE CONTRACTOR'S RESPONSIBILITY TO OBTAIN ACCURATE UNDERGROUND UTILITY LINE LOCATIONS FROM THE UTILITY COMPANIES, UTILITY OWNERS AND, OR VIA UNDERGROUND UTILITY LOCATION EQUIPMENT AS NEEDED TO ESTABLISH ACCURATE LOCATIONS PRIOR TO ANY EXCAVATION.

Abbreviations Legend:

Table with 2 columns: Abbreviation and Description. Includes entries like ADH AMERICANS WITH DISABILITY ACT, AHJ AUTHORITY HAVING JURISDICTION, AP ASSESSOR'S PLAT, BC BOTTOM OF CURB, BT BOTTOM OF TESTHOLE, BIT BITUMINOUS (BERM), BIO BIORETENTION, BS BASEMENT SLAB ELEVATION, BW FINISHED GRADE AT BOTTOM OF WALL, CB CATCH BASIN, (C) CALCULATED, CL CENTERLINE, (CA) CHORD ANGLE, CLDIP CONCRETE LINED DUCTILE IRON PIPE, CLEAN OUT, CONC CONCRETE, (D) DEED, DCB DOUBLE CATCH BASIN, DI DROP INLET, DMH DRAINAGE MANHOLE, DP DETENTION POND, ELEV ELEVATION, EOP EDGE OF PAVEMENT, ESC ESCROSION AND SEDIMENT CONTROL, EX EXISTING, FES FLARED END SECTION, FFE FINISH FLOOR ELEVATION, GS GARAGE SLAB ELEVATION, GW GROUND WATER TABLE, HW HEADWALL, HC HIGH CAPACITY CATCH BASIN GRATE, HDPE HIGH DENSITY POLYETHYLENE, ID INLINE DRAIN, INV INVERT, IP INFILTRATION POND, LF LINEAR FEET, LOD LIMIT OF DISTURBANCE, LP LIGHT POLE, (M) MEASURED, (N/F) NOW OR FORMERLY

Site Callouts Legend:

Table with 2 columns: Callout and Description. Includes entries like 7.1.0 PRECAST CONCRETE CURB, 7.1.1 RIDOT STD 3' PRECAST CONCRETE TRANSITION CURB, 7.5.1 RIDOT STD BITUMINOUS ASPHALT BERM, 7.1.8 RIDOT STD CONCRETE APRON STONE, 20.1.0 PAVEMENT MARKINGS ARROWS AND ONLY, 4DY 4" EPOXY RESIN PAVEMENT MARKINGS- DOUBLE YELLOW, 4W 4" PAINTED WHITE MARKINGS, 4W4S 4" WHITE STRIPING 2' ON CENTER AT 45', 6WS 6" WHITE EPOXY RESIN PAVEMENT MARKINGS-SKIP PATTERN, 6W 6" WHITE EPOXY RESIN PAVEMENT MARKINGS, 12W STOP LINE (REFERENCE MUTCD SECTION 3B.16), ADAS ADA SPACE PAVEMENT MARKINGS MUST COMPLY WITH ALL ADA AND MUTCD REGULATIONS AND REQUIREMENTS, ADAR ADA CURB RAMP MUST COMPLY WITH ALL ADA REGULATIONS AND REQUIREMENTS, ADAV VAN ADA SPACE PAVEMENT MARKINGS MUST COMPLY WITH ALL ADA AND MUTCD REGULATIONS AND REQUIREMENTS, CWK CROSSWALK PAVEMENT MARKINGS, SOLID 2" WHITE LINES SPACED 4' OC (REFERENCE MUTCD SECTION 3B.16), YL YIELD LINE (REFERENCE MUTCD SECTION 3B.16)

Americans with Disabilities Act Notes:

- 1. ALL IMPROVEMENTS MUST COMPLY WITH THE "AMERICANS WITH DISABILITIES ACT ACCESSIBILITY GUIDELINES (ADAAG)" BY THE DEPARTMENT OF JUSTICE (CURRENT EDITION).
2. MAXIMUM RUNNING SLOPE ALONG ALL ACCESSIBLE PATHS OF TRAVEL MUST BE 4.5% (0.045 FT/FT), AND MAXIMUM CROSS SLOPE ACROSS ALL ACCESSIBLE PATHS OF TRAVEL MUST BE 1.5% (0.015 FT/FT).
3. ADA PARKING SPACES AND LOADING AREAS: THE STEEPEST SLOPE OF THE SPACE, MEASURED IN ANY DIRECTION (INCLUDING DIAGONAL), MUST BE LESS THAN OR EQUAL TO 2% (0.02 FT/FT).
4. A MINIMUM 5'x5' LANDING MUST BE PROVIDED IN FRONT OF ALL PUBLICLY ACCESSIBLE BUILDING ENTRANCES/ EGRESSES.
5. FOR EVERY 8 (OR FRACTION OF 8) ADA PARKING SPACES, AT LEAST ONE MUST BE A VAN PARKING SPACE.
6. NOTWITHSTANDING THE NOTES LISTED ABOVE, TOWN OR STATE-SPECIFIC STANDARDS MAY BE MORE STRINGENT AND OVERRULE.
7. NOTE THAT THE GRADING/ PLAN VIEWS AND DETAILS CONTAINED WITHIN THIS PLAN SET MAY NOT SHOW THE DETAIL NECESSARY TO CONSTRUCT WALKWAYS, RAMPS, AND SPACES TO COMPLY WITH THE ABOVE REQUIREMENTS.

Existing Legend:

Table with 2 columns: Symbol and Description. Includes entries like PROPERTY LINE, ASSESSORS LINE, BUILDING, BRUSHLINE, TREELINE, GUARDRAIL, FENCE, RETAINING WALL, STONE WALL, MINOR CONTOUR LINE, MAJOR CONTOUR LINE, WATER LINE, SEWER LINE, SEWER FORCE MAIN, GAS LINE, ELECTRIC LINE, OVERHEAD WIRES, DRAINAGE LINE, SOILS LINES, 50' PERIMETER WETLAND, 100' RIVERBANK WETLAND, 200' RIVERBANK WETLAND, FEMA BOUNDARY, STREAM, WETLAND LINE & FLAG, STATE HIGHWAY LINE, STATE FREEWAY LINE

Proposed Legend:

Table with 2 columns: Symbol and Description. Includes entries like PERFORATED UNDERDRAIN, PERFORATED FIELD DRAIN, DRAINAGE LINE, PERFORATED SUBDRAIN, SWALE, SEWER FORCE MAIN, GAS LINE, WATER LINE, HYDRANT ASSEMBLY, WATER SHUT OFF, WATER VALVE, THRUST BLOCK, SEWER LINE, OVERHEAD WIRE, ELECTRIC, TELEPHONE, CABLE LINE, LIMIT OF DISTURBANCE/ LIMIT OF CLEARING, SEDIMENTATION BARRIER, SILT FENCE (RIDOT STD 9.2.0), COMPOST SOCK OR APPROVED EQUAL, SLOPES STEEPER THAN 3:1 (2:1 OR 1:1 SLOPES), UNDERGROUND INFILTRATION OUTLINE, POND ACCESS, RIPRAP, SAND FILTER, BIO RETENTION, CATCH BASIN, DOUBLE CATCH BASIN, MANHOLE, FLARED END SECTION, HEADWALL

Utility Note:

ALL UNDERGROUND UTILITIES SHOWN ON THESE PLANS WERE PROVIDED BY OTHERS AND ARE APPROXIMATE ONLY. LOCATIONS MUST BE DETERMINED IN THE FIELD BEFORE EXCAVATION, BLASTING, UTILITY INSTALLATION, BACKFILLING, GRADING, PAVEMENT RESTORATION, AND ALL OTHER SITE WORK.
PER THE CODE OF FEDERAL REGULATIONS - TITLE 29, PART 1926 IT IS THE SITE CONTRACTOR'S RESPONSIBILITY TO OBTAIN ACCURATE UNDERGROUND UTILITY LINE LOCATIONS FROM THE UTILITY COMPANIES, UTILITY OWNERS AND, OR VIA UNDERGROUND UTILITY LOCATION EQUIPMENT AS NEEDED TO ESTABLISH ACCURATE LOCATIONS PRIOR TO ANY EXCAVATION.

Diprete Engineering logo and contact information: Two Stafford Court Cranston, RI 02920, Tel: 401-943-1000, Fax: 401-464-6006, www.diprete-eng.com

Professional Engineer seal for Jason P. Clough, No. 01010, Registered Professional Engineer Civil, State of Rhode Island and Providence Plantings.

This plan set must not be used for construction purposes unless stamped 'Issued for Construction' and stamped by a registered Professional Engineer of Diprete Engineering.
Diprete Engineering only warrants plans on a 30-day engineering liability limitation. Diprete Engineering does not warrant plans by any other party.
The contractor is responsible for all of the means, methods, safety and quality of the work shown on this plan set. Diprete Engineering assumes no responsibility for damages incurred due to errors or omissions on this plan set. See Utility Note on sheet 3 for locations of existing utilities. See Utility Note on sheet 3.

Table with 2 columns: Date and Description. Includes entries like 09-29-2020 preliminary determination BEC, 08-23-2020 preliminary determination BEC, 09-03-2020 preliminary determination BEC, 09-03-2020 preliminary determination BEC

DEPARTMENT OF ENVIRONMENTAL MANAGEMENT OFFICE OF WATER RESOURCES FRESHWATER WETLANDS PROGRAM APPROVED WITH CONDITIONS AS SPECIFIED IN THE LETTER OF APPROVAL DATED OCT 22 2020 FILE # 20-0081 NO CHANGES ALLOWED WITHOUT PRIOR APPROVAL APPROVED PLANS MUST BE AT CONSTRUCTION SITE

Notes and Legend Old Louisgisset Condos. Prepared for BBWW, LLC c/o Brian Bucci, P.O. Box 6187, Warwick, Rhode Island 02887. Design By: J.P.C.

AP 21, LOT 50
N/F
DVI LLC CVS

AP 21, LOT 403
N/F
DVI III LLC

AP 21, LOT 26
N/F
DV I PARCEL 3
LLC DENNY'S

AP 13, LOT 112
N/F
BB/WW
PROPERTIES LLC

AP 13, Lot 143
241,225 SQUARE FEET
(5.54 ACRES)

AP 13, LOT 123
N/F
FLORENCE HOUDE

AP 13, Lot 123
5,715 SQUARE FEET
(0.13 ACRES)

AP 13, LOT 111
N/F
LILLIAN M AUGER

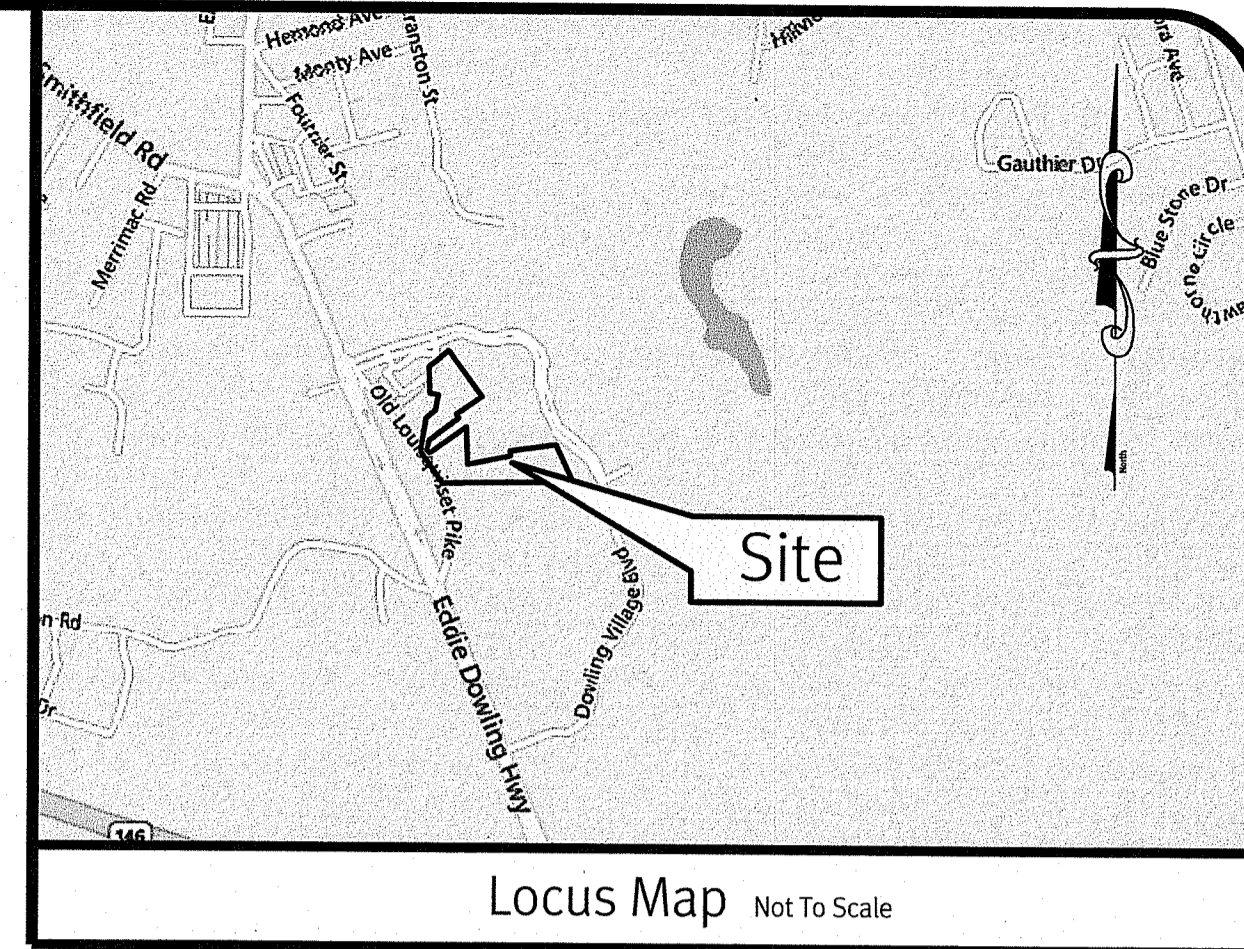
AP 13, LOT 407
N/F
BYBLOS DEVELOPMENT INC

AP 13, LOT 417
N/F
DV VII B, LLC

AP 13, LOT 18
N/F
ROCKCLIFF FARM, LLC

Legend
NOT ALL ITEMS SHOWN WILL APPEAR ON THE SURVEY

BUILDING		NAIL FOUND/SET	
AP		DRILL HOLE FOUND/SET	
N/F		IRON ROD/PIPE FOUND/SET	
(O)		BOUND FOUND/SET	
(M)		SIGN	
(CA)		BOLLARD	
HC		SOIL EVALUATION	
		CATCH BASIN	
		DOUBLE CATCH BASIN	
		DRAINAGE MANHOLE	
		FLARED END SECTION	
		GUY POLE	
		ELECTRIC MANHOLE/HANDHOLE	
		UTILITY/POWER POLE	
		LIGHTPOST	
		SEWER/SEPTIC MANHOLE	
		SEWER VALVE	
		CLEANOUT	
		HYDRANT	
		IRRIGATION VALVE	
		WATER VALVE	
		WELL	
		MONITORING WELL	
		UNKNOWN MANHOLE	
		GAS VALVE	
		WETLAND FLAG	
		BENCH MARK	
		SHRUB	
		TREE	



General Notes

- THE PARCEL IS FOUND ON ASSESSOR'S PLAT 13, LOT 123 & 143 IN THE TOWN OF NORTH SMITHFIELD, PROVIDENCE COUNTY, RHODE ISLAND.
- THE OWNER OF LOT 143 PER DEED BOOK 688, PAGE 220 & OF LOT 123 PER DEED BOOK 800, PAGE 113 IS BB/WW PROPERTIES, LLC
- BASED ON GRAPHICAL PLOTTING ONLY, THE PARCEL IS LOCATED IN ZONE X PER FEDERAL EMERGENCY MANAGEMENT AGENCY FLOOD INSURANCE RATE MAP 44007001576, DATED MARCH 2, 2009. THIS DESIGNATION MAY CHANGE BASED UPON REVIEW BY A FLOOD ZONE SPECIALIST OR BY THE RESULTS OF A COMPREHENSIVE FLOOD STUDY.
- THE PARCEL IS ZONED BH BASED ON THE TOWN OF NORTH SMITHFIELD GIS MAP. ANY OVERLAY DISTRICTS, SPECIAL PERMITS OR VARIANCES SPECIFIC TO THIS SITE ARE NOT TAKEN INTO CONSIDERATION. PLEASE CONTACT THE ZONING DEPARTMENT FOR ANY ADDITIONAL INFORMATION OR FOR A CERTIFICATE OF ZONING.
- THERE WERE NO CEMETERIES, GRAVE SITES AND OR BURIAL GROUNDS OBSERVED WITHIN THE LIMITS OF THE SURVEY.
- FIELD SURVEY PERFORMED BY DIPRETE ENGINEERING ON JANUARY 13, 2020. THIS PLAN REFLECTS ON THE GROUND CONDITIONS AS OF THAT DATE.
- THIS SURVEY WAS PREPARED WITHOUT THE BENEFIT OF A TITLE REPORT. DIPRETE ENGINEERING IS NOT RESPONSIBLE FOR ANY UNKNOWN OR UNRECORDED EASEMENTS, DEEDS OR CLAIMS THAT A TITLE REPORT WOULD DISCLOSE.

Datum Note:

ELEVATIONS SHOWN HEREON, IN U.S. SURVEY FEET, ARE REFERENCED TO THE NORTH AMERICAN VERTICAL DATUM OF 1988 (NAVD 88), AS DETERMINED BY DIPRETE ENGINEERING USING REAL TIME KINEMATIC G.P.S. OBSERVATIONS.

Plan References

- "FINAL RECORD PLAN - DOWLING VILLAGE - PHASE II & III AP 13 LOTS 44, 53, & 123 AND A PORTION OF LOTS 18, 20, 21 & 76, AP 21 LOTS 30, 31, 32, 61 & 71 NORTH SMITHFIELD, RHODE ISLAND. PLAN BY DIPRETE ENGINEERING ASSOCIATES, INC DATED JULY, 2008 REVISED 1-22-10 BOOK 1 PAGES 258-264.
- ADMINISTRATIVE SUBDIVISION PLAN DOWLING VILLAGE - REPLAT OF RECORD LOTS 1, 3, 4 & 5 AP 21 LOTS 401, 404, & 405 AND DOWLING VILLAGE WAY NORTH SMITHFIELD, RHODE ISLAND. PLAN BY DIPRETE ENGINEERING ASSOCIATES, INC DATED JUNE 2011. PLAT BOOK 1 PAGES 294 & 295.
- ADMINISTRATIVE SUBDIVISION PLAN DOWLING VILLAGE - REPLAT OF RECORD LOTS 1, 2, 3, 12, 14, 16, 17 & 19 AP 21 LOTS 401, 402, 403, 412, 414, 416, 417, & 419 NORTH SMITHFIELD, RI AND DOWLING VILLAGE WAY NORTH SMITHFIELD, RHODE ISLAND. PLAN BY DIPRETE ENGINEERING ASSOCIATES, INC DATED NOVEMBER 2 2011. PLAT BOOK 1 PAGES 296-299.
- ADMINISTRATIVE SUBDIVISION PLAN DOWLING VILLAGE - REPLAT OF RECORD AP 21 LOT 403 & AP 13 LOTS 53, 407 & 415 NORTH SMITHFIELD, RI AND DOWLING VILLAGE WAY NORTH SMITHFIELD, RHODE ISLAND. PLAN BY DIPRETE ENGINEERING ASSOCIATES, INC DATED MARCH 4, 2014. PLAT BOOK 1 PAGES 338-339.

Kindly be advised that this Permit is not equivalent to a verification of the type or extent of freshwater wetlands on site.

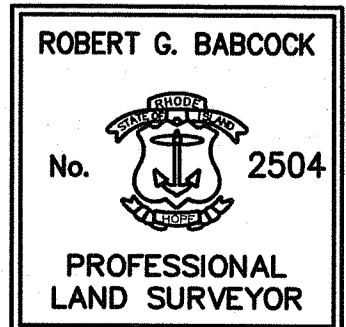
Christopher D. Semek
DEPARTMENT OF ENVIRONMENTAL MANAGEMENT
OFFICE OF WATER RESOURCES
FRESHWATER WETLANDS PROGRAM
APPROVED WITH CONDITIONS
AS SPECIFIED IN THE LETTER OF APPROVAL
DATED OCT 22 2020 FILE # 20-0031
NO CHANGES ALLOWED WITHOUT PRIOR APPROVAL
APPROVED PLANS MUST BE AT CONSTRUCTION SITE

Certification

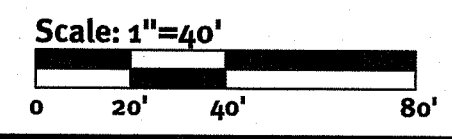
THIS SURVEY HAS BEEN CONDUCTED AND THE PLAN HAS BEEN PREPARED PURSUANT TO SECTION 9 OF THE RULES AND REGULATIONS ADOPTED BY THE RHODE ISLAND STATE BOARD OF REGISTRATION FOR PROFESSIONAL LAND SURVEYORS ON NOVEMBER 25, 2015, AS FOLLOWS:

TYPE OF SURVEY	MEASUREMENT SPECIFICATION
COMPREHENSIVE BOUNDARY SURVEY	CLASS 1
TOPOGRAPHIC SURVEY (LIMITED)	CLASS 1-2

THE PURPOSE FOR THE CONDUCT OF THE SURVEY AND FOR THE PREPARATION OF THE PLAN IS AS FOLLOWS: PERIMETER RETRACEMENT PERFORMED BY DIPRETE ENGINEERING FOR THE PURPOSE OF SITE ENGINEERING AND PERMITTING.



Robert G. Babcock
ROBERT G. BABCOCK, RIPLS #2504, COA #LS.000A160
3/21/20



z:\demain\projects\6837-004-a12-old\subsets\condos\autocad\drawings\0517-004-ecoc-dwg Plotred: 9/28/2020

Diprete Engineering
Two Stafford Court, Cranston, RI 02920
tel 401-943-1000 fax 401-654-6006 www.diprete-eng.com

Boston • Providence • Newport

Environmental Management
SEP 30 2020
Chris D. Semek

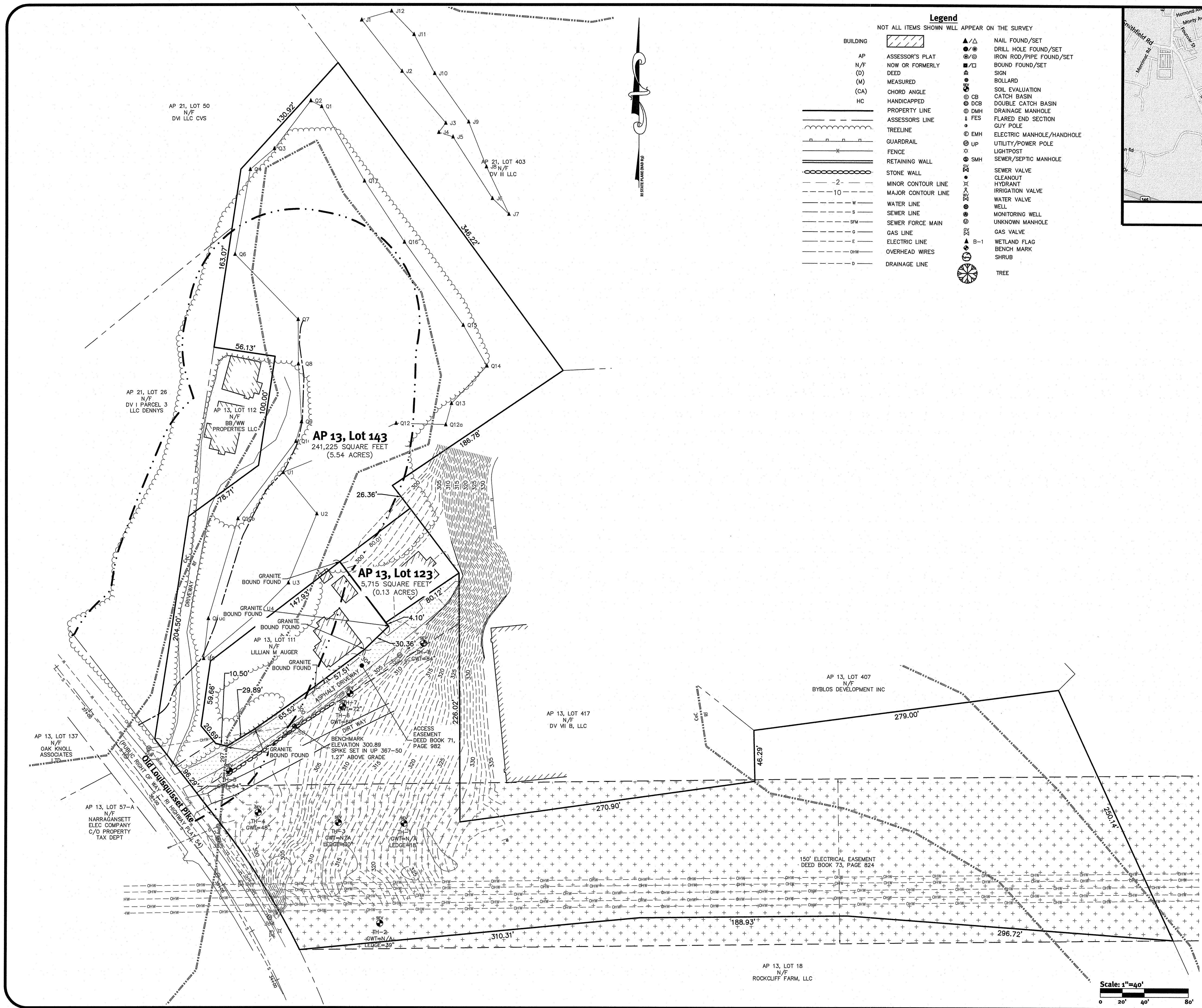
No.	Date	Description	Drawn By: MTL	By:
1	3/25/20	Initial Submittal		
2	10/22/20	Final Approved		

Boundary/Topographic Survey
Dowling Village Condominium
Assessor's Plat 13 Lot 143
North Smithfield, Rhode Island
Client: **BBWW LLC c/o Brian Buccì**
PO Box 687, Warwick, Rhode Island 02887

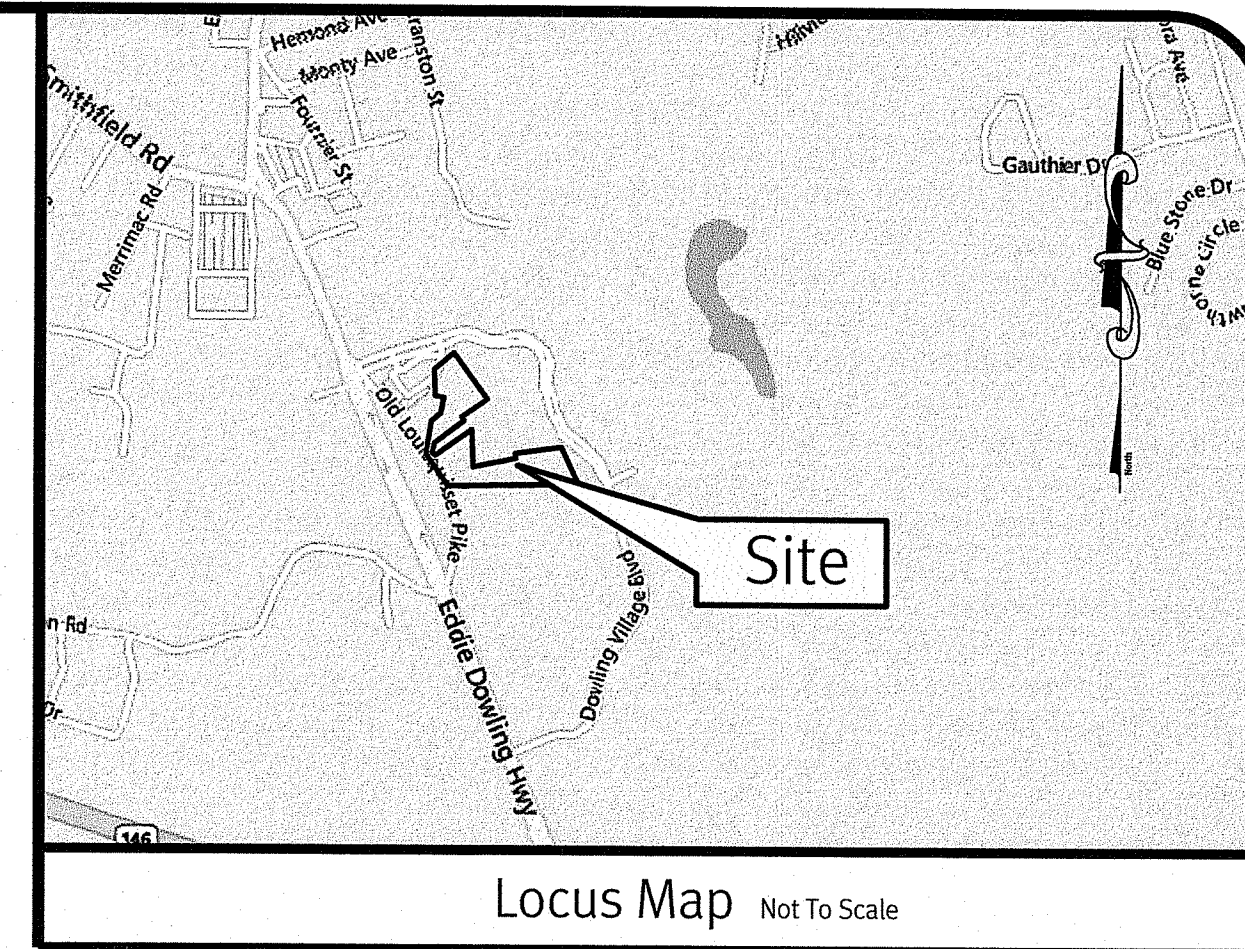
DE Job No: 0517-004-A12 Copyright 2020 by Diprete Engineering Associates, Inc.

SHEET 4 OF 10

E:\Main\projects\0617-004-113 Old Louisiquiset condos\misc\cad drawings\0617-004-113-004-001.dwg Plotter: 8/28/2020



- Legend**
NOT ALL ITEMS SHOWN WILL APPEAR ON THE SURVEY
- | | | |
|----------|--------------------|-------------------------------|
| BUILDING | ASSESSOR'S PLAT | NAIL FOUND/SET |
| N/F | NOW OR FORMERLY | DRILL HOLE FOUND/SET |
| (D) | DEED | IRON ROD/PIPE FOUND/SET |
| (M) | MEASURED | BOUND FOUND/SET |
| (CA) | CHORD ANGLE | SIGN |
| HC | HANDICAPPED | BOLLARD |
| | PROPERTY LINE | SOIL EVALUATION |
| | ASSESSOR'S LINE | CATCH BASIN |
| | TREELINE | DOUBLE CATCH BASIN |
| | GUARDRAIL | DMH DRAINAGE MANHOLE |
| | FENCE | FES FLARED END SECTION |
| | RETAINING WALL | EMH ELECTRIC MANHOLE/HANDHOLE |
| | STONE WALL | UP UTILITY/POWER POLE |
| -2- | MINOR CONTOUR LINE | SMH SEWER/SEPTIC MANHOLE |
| -10- | MAJOR CONTOUR LINE | LIGHTPOST |
| W | WATER LINE | SEWER VALVE |
| S | SEWER LINE | CLEANOUT |
| SFM | SEWER FORCE MAIN | HYDRANT |
| G | GAS LINE | IRRIGATION VALVE |
| E | ELECTRIC LINE | WATER VALVE |
| OHW | OVERHEAD WIRES | WELL |
| D | DRAINAGE LINE | MONITORING WELL |
| | | UNKNOWN MANHOLE |
| | | GAS VALVE |
| | | B-1 WETLAND FLAG |
| | | BENCH MARK |
| | | SHRUB |
| | | TREE |



Locus Map Not To Scale

SEP 30 2020

Kindly be advised that this Permit is contingent to a verification of the type or extent of freshwater wetlands on site.

JASON P. CLOUGH
No. [Signature]
REGISTERED PROFESSIONAL ENGINEER
CIVIL

This plan set must not be used for construction purposes unless stamped 'Issued for Construction' and stamped by a registered Professional Engineer of Diprete Engineering.
The contractor is responsible for all of the means, methods, safety and implementation of this plan and design.
Engineering assumes no responsibility for damages incurred due to locations of existing utilities. See Utility Note on sheet 5.

2	09-25-2020	Preliminary Determination B.C.	N.D.K.	Design By: J.P.C.
1	08-23-2020	Preliminary Determination B.C.	N.D.K.	
1	09-23-2020	Preliminary Determination Submission	By: J.P.C.	
		Description:		

DEPARTMENT OF ENVIRONMENTAL MANAGEMENT
OFFICE OF WATER RESOURCES
FRESHWATER WETLANDS PROGRAM
APPROVED WITH CONDITIONS
AS SPECIFIED IN THE LETTER OF APPROVAL
DATED OCT 22 2020 FILE # 20-0081
NO CHANGES ALLOWED WITHOUT PRIOR APPROVAL
APPROVED PLANS MUST BE AT CONSTRUCTION SITE

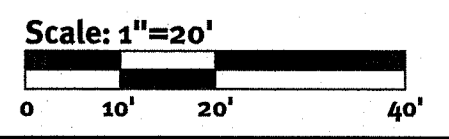
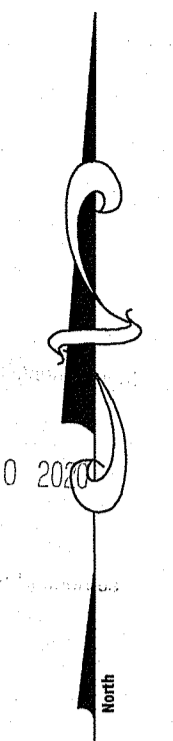
Martin D. Senack

Existing Analysis Plan
Old Louisiquiset Condos
Assessor's Plat 13, Lots 143 & 123
North Smithfield, Rhode Island
Prepared for
BBWW, LLC c/o Brian Bucci
P.O. Box 6187, Warwick, Rhode Island 02887

Diprete Engineering
5968 Blackstone Blvd, North Smithfield, MA 02026
Tel: 401-928-9500 Fax: 401-454-6006 www.diprete-eng.com
BOSTON • PROVIDENCE • NEWPORT

Kindly be advised that this Permit is not equivalent to a verification of the type or extent of freshwater wetlands on site.

SEP 30 2020



DEPARTMENT OF ENVIRONMENTAL MANAGEMENT
 OFFICE OF WATER RESOURCES
 FRESHWATER WETLANDS PROGRAM
 APPROVED WITH CONDITIONS
 AS SPECIFIED IN THE LETTER OF APPROVAL
 DATED OCT 2 2020 FILE # 20-0081
 NO CHANGES ALLOWED WITHOUT PRIOR APPROVAL
 APPROVED PLANS MUST BE AT CONSTRUCTION SITE

Jonathan D. Wenneck

Grading, Drainage and Utilities Plan
 Old Louisquisset Condos

Assessor's Parcels: Lots 143 & 123
 North Smithfield, Rhode Island
 Prepared for
BBWW, LLC c/o Brian Bucci
 P.O. Box 6187, Warwick, Rhode Island 02887

This plan set must not be used for construction purposes unless stamped 'Issued for Construction' and stamped by a registered Professional Engineer of DiPrete Engineering.

DiPrete Engineering only warrants plans on a DiPrete Engineering Professional Engineer's seal and signature. DiPrete Engineering does not warrant plans by any other party.

The contractor is responsible for all of the means, methods, safety precautions and requirements, and OSHA compliance in the implementation of this plan and of design.

DiPrete Engineering assumes no responsibility for damages incurred due to locations of existing utilities. See Utility Note on sheet 3.

JASON P. CLOUGH
 No. 11010
 REGISTERED PROFESSIONAL ENGINEER
 CIVIL

DiPrete Engineering
 570 Baldwinsville Road, Baldwinsville, MA 02026
 Tel: 978-949-9900 Fax: 978-664-6006 www.diprete-eng.com
 BOSTON • PROVIDENCE • NEWPORT

Z:\deman\projects\0617-004-412_01\louisquisset-condos\autocad drawings\0617-004-plan.dwg Plotdate: 9/28/2020

Permeable Pavement Area A Through K Notes:

BOTTOM OF RESERVOIR COURSE AND BOTTOM OF FILTER COURSE ELEVATIONS

AREA A (NON-INFILTRATING)
BOTTOM OF RESERVOIR COURSE=307.50
BOTTOM OF FILTER COURSE=306.00

AREA B (NON-INFILTRATING)
BOTTOM OF RESERVOIR COURSE=305.50
BOTTOM OF FILTER COURSE=304.00

AREA C (NON-INFILTRATING)
BOTTOM OF RESERVOIR COURSE=303.50
BOTTOM OF FILTER COURSE=302.00

AREA D (NON-INFILTRATING)
BOTTOM OF RESERVOIR COURSE=301.50
BOTTOM OF FILTER COURSE=300.00

AREA E (INFILTRATING)
BOTTOM OF RESERVOIR COURSE=299.50
BOTTOM OF FILTER COURSE=298.0

AREA F (INFILTRATING)
BOTTOM OF RESERVOIR COURSE=305.50
BOTTOM OF FILTER COURSE=304.00

AREA G (INFILTRATING)
BOTTOM OF RESERVOIR COURSE=303.50
BOTTOM OF FILTER COURSE=302.00

AREA H (INFILTRATING)
BOTTOM OF RESERVOIR COURSE=301.50
BOTTOM OF FILTER COURSE=300.00

AREA I (INFILTRATING)
BOTTOM OF RESERVOIR COURSE=299.50
BOTTOM OF FILTER COURSE=298.00

AREA J (INFILTRATING)
BOTTOM OF RESERVOIR COURSE=297.50
BOTTOM OF FILTER COURSE=296.00

AREA K (INFILTRATING)
BOTTOM OF RESERVOIR COURSE=295.50
BOTTOM OF FILTER COURSE=294.00

Rectorseal Backwater Device Note:

EACH RECTORSEAL BACKWATER DEVICE MUST BE INSTALLED BACKWARDS TO THE DIRECTION OF FLOW FROM THE UNDERDRAINS SO THAT THE FLAPPER WILL REMAIN IN THE CLOSED POSITION. A 2" ORIFICE MUST BE DRILLED IN EACH FLAPPER TO CONTROL FLOW FROM THE UNDERDRAINS. THE SITE CONTRACTOR MUST COORDINATE WITH THE DESIGN ENGINEER PRIOR TO STARTING CONSTRUCTION

Kindly be advised that this Permit is not equivalent to a verification of the type or extent of freshwater wetlands on site.

SEP 30 2020

Scale: 1"=20'

0 10' 20' 40'

Permeable Pavement Plan View

Old Louisquisset Condos

Assessor's Parcels 103-143 & 123
North Smithfield, Rhode Island
BBWW, LLC c/o Brian Bucci
P.O. Box 6187, Warwick, Rhode Island 02887

DEPARTMENT OF ENVIRONMENTAL MANAGEMENT
OFFICE OF WATER RESOURCES
FRESHWATER WETLANDS PROGRAM
APPROVED WITH CONDITIONS
AS SPECIFIED IN THE LETTER OF APPROVAL
DATED OCT 22 2020 FILE # 20-0081
ALL CHANGES ALLOWED WITHOUT PRIOR APPROVAL
APPROVED PLANS MUST BE AT CONSTRUCTION SITE

Martin D. Wemck

NON-INFILTRATING AREA (STORAGE)
INFILTRATING AREA

JASON P. CLOUGH
No. 10110
REGISTERED PROFESSIONAL ENGINEER
CIVIL

This plan set must not be used for construction purposes unless stamped "Issued for Construction" and stamped by a registered Professional Engineer of DiPrete Engineering.
DiPrete Engineering only warrants plans on a DiPrete Engineering project. DiPrete Engineering does not warrant plans for any other party.
The contractor is responsible for all of the means, methods, safety precautions and requirements, and OSHA compliance in the performance of this plan and design.
DiPrete Engineering assumes no responsibility for damages caused due to locations of existing utilities. See Utility Note on sheet 3.

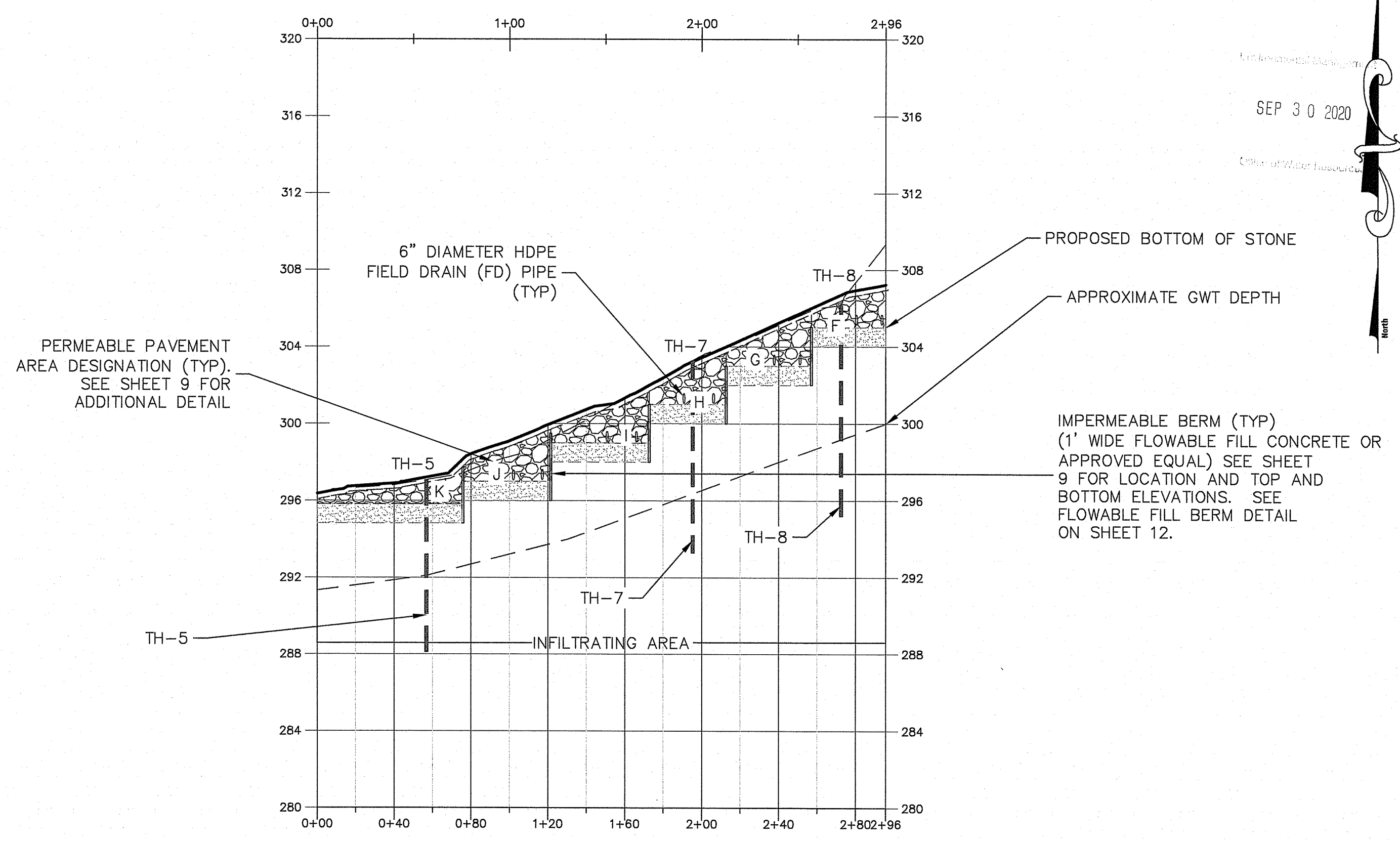
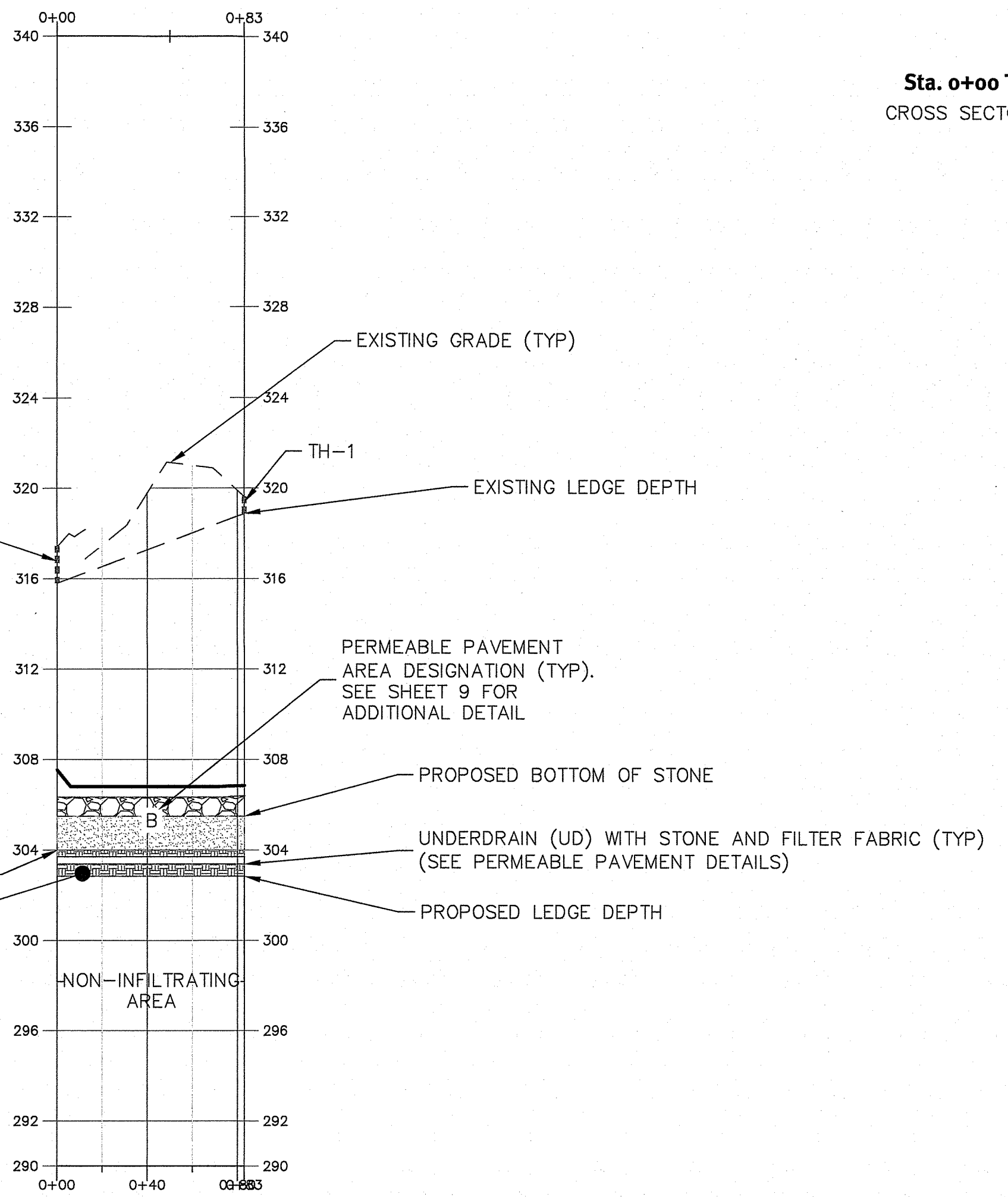
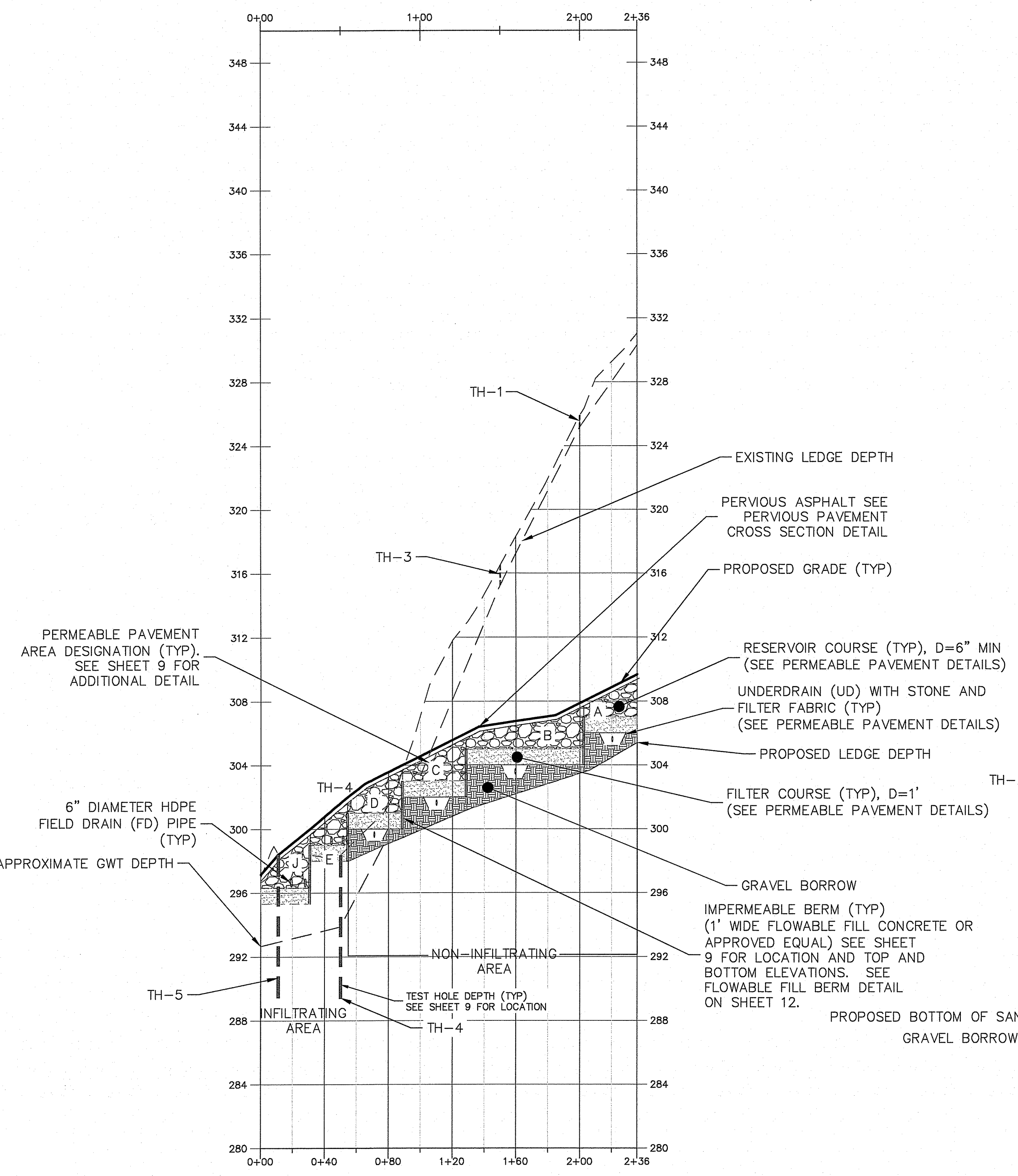
No.	Date	Description	Design By: P.C.
1	09-24-2020	Preparation/Revisions/SEC	N.D.K.
2	09-24-2020	Final/SEC	N.D.K.
3	09-23-2020	Preliminary/SEC/SEC/SEC	N.D.K.
4	09-23-2020	Preliminary/SEC/SEC/SEC	N.D.K.

Copyright © 2020 by DiPrete Engineering Associates, Inc.

DiPrete Engineering
596 Baldwinsville Road, Baldwinsville, MA 02026
Tel: 801-949-9000 Fax: 801-464-6006 www.diprete-eng.com
BOSTON • PROVIDENCE • NEWPORT

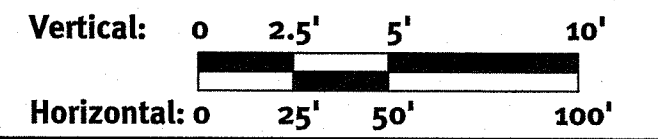
Z:\demain\projects\0617-004-412-old louisquisset-condos\autocad drawings\0617-004-plan.dwg Plotdate: 9/28/2020

z:\deman\projects\0617-004-412-old louisisset condos\autocad drawings\0617-004-plan.dwg Plotdate: 9/28/2020



DEPARTMENT OF ENVIRONMENTAL MANAGEMENT
OFFICE OF WATER RESOURCES
FRESHWATER WETLANDS PROGRAM
APPROVED WITH CONDITIONS
AS SPECIFIED IN THE LETTER OF APPROVAL
DATED OCT 22 2020 FILE # 20-0231
NO CHANGES ALLOWED WITHOUT PRIOR APPROVAL
APPROVED PLANS MUST BE AT CONSTRUCTION SITE

Martin D. Wemck



DiPrete Engineering
596 Blaisdell Highway, Suite 200, North Attleboro, MA 02061
Tel: 781-548-9800 Fax: 781-548-6006 www.diprete-eng.com

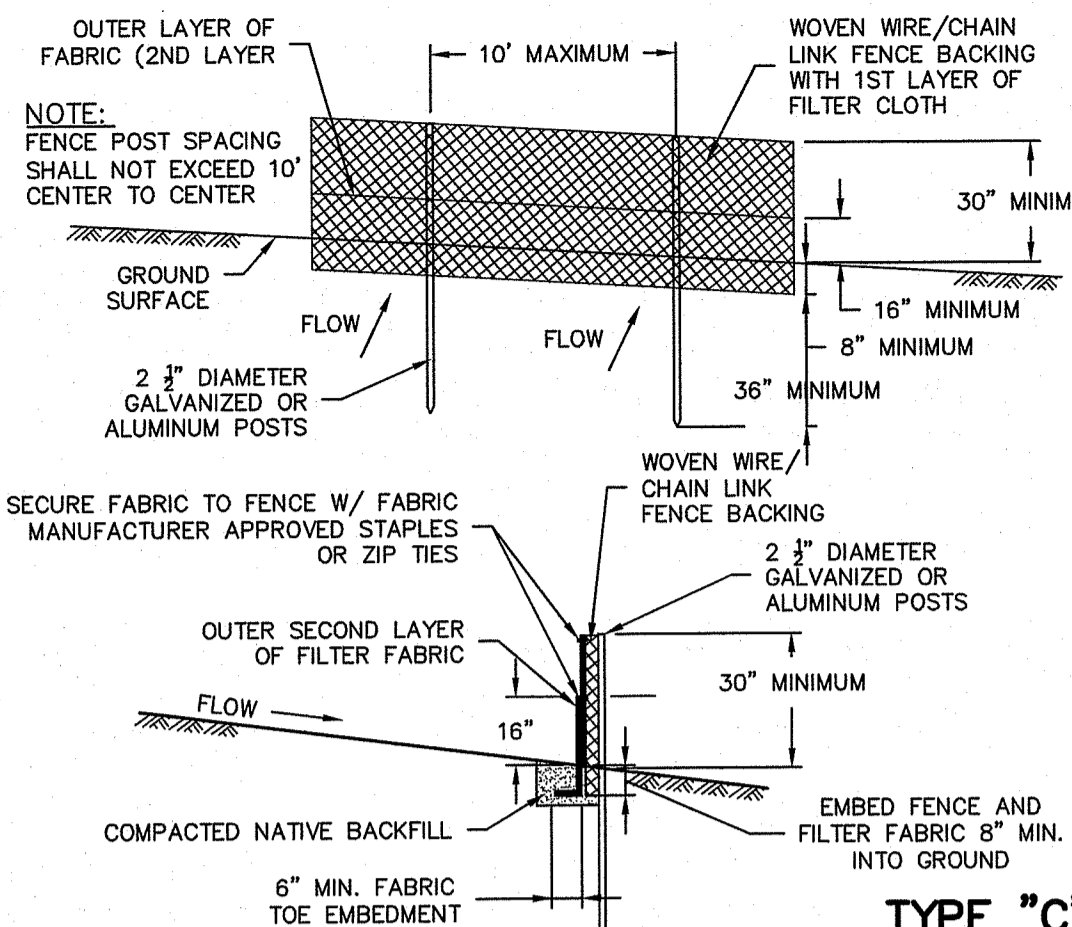
JASON P. CLOUGH
No. [Signature]
REGISTERED PROFESSIONAL ENGINEER
CIVIL

This plan set must not be used for construction purposes unless stamped "Issued for Construction" and stamped by a registered Professional Engineer of DiPrete Engineering.
DiPrete Engineering only warrants plans on a DiPrete Engineering Engineering. DiPrete Engineering does not warrant plans by any other party.
The contractor is responsible for all of the means, methods, safety and construction of this project. DiPrete Engineering assumes no responsibility for damages incurred due to locations of existing utilities. See Utility Note on sheet 3.

No.	Date	Description	By:
1	09-28-2020	Preliminary Determination B.E.C.	N.D.K.
2	09-29-2020	Preliminary Determination B.E.C.	N.D.K.
3	09-29-2020	Preliminary Determination Submission	N.D.K.

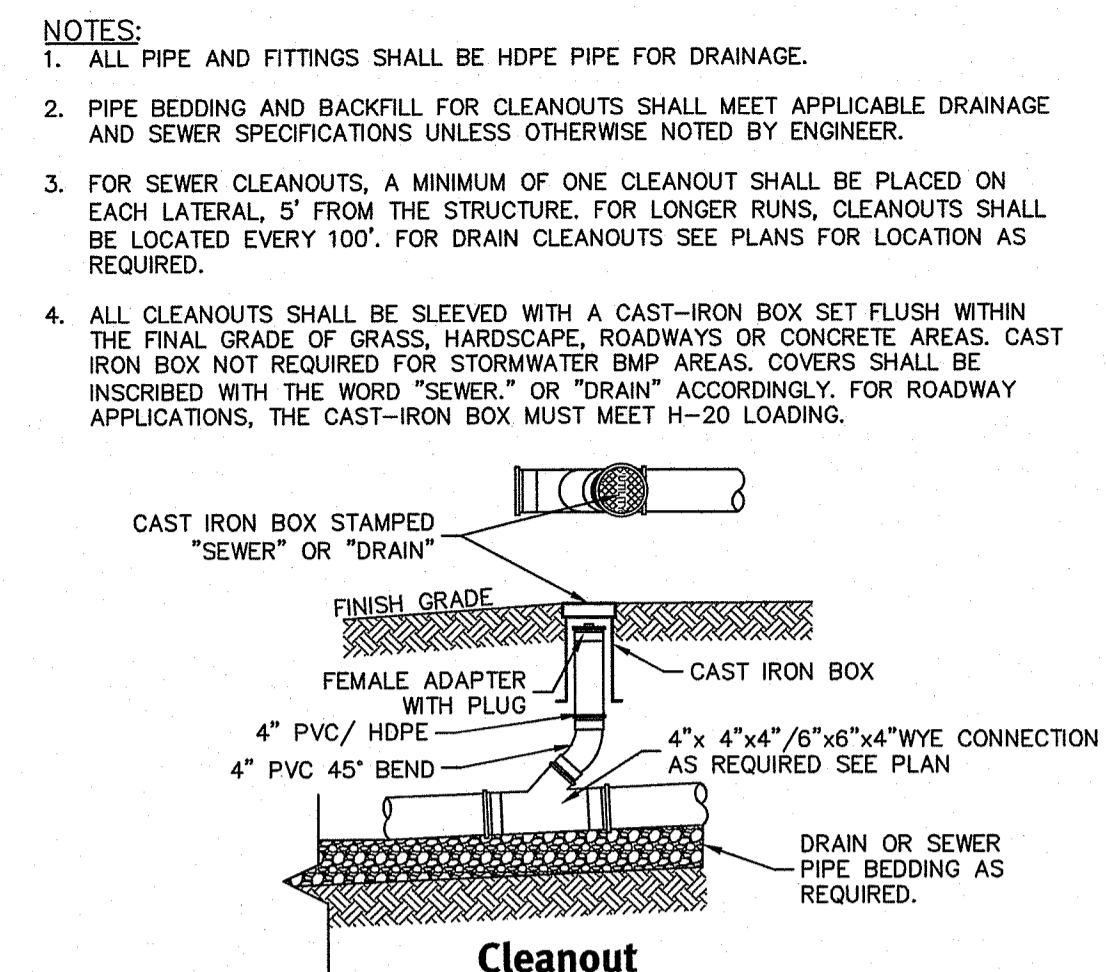
Drawn By: N.D.K. Design By: J.P.C.

Permeable Pavement Profiles
Old Louisisset Condos
Assessor's Parcel ID: 105-143 & 143
North Smithfield, Rhode Island
Prepared for:
BBWW, LLC c/o Brian Bucci
P.O. Box 6187, Warwick, Rhode Island 02887

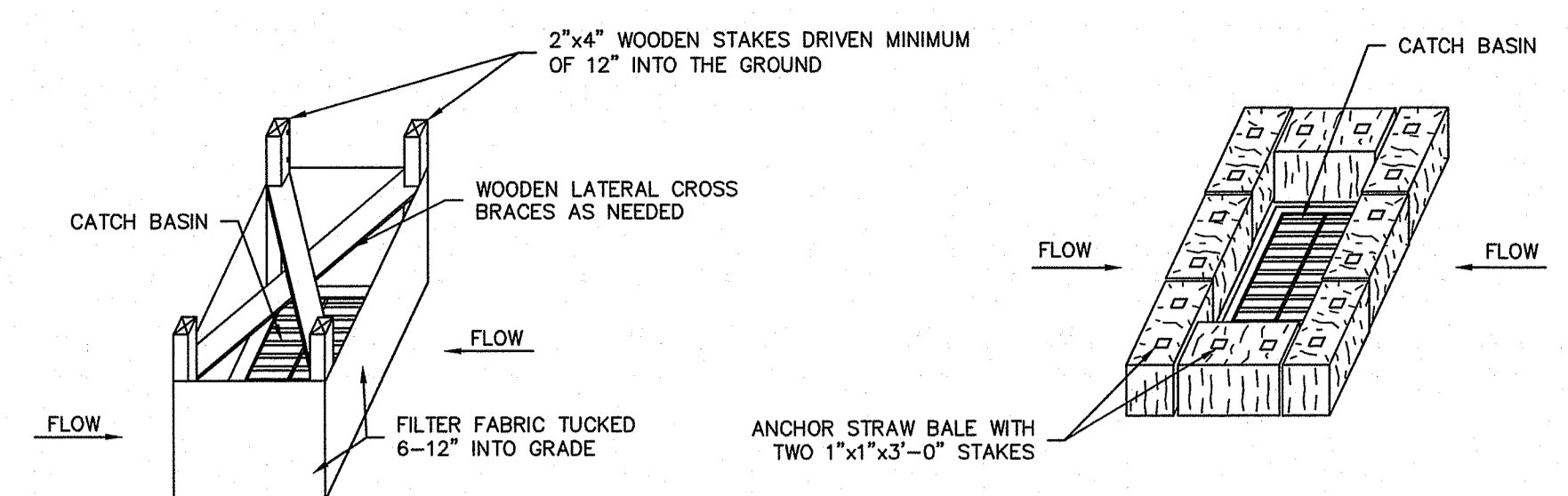


- CONSTRUCTION SPECIFICATIONS:**
- WOVEN WIRE/CHAIN LINK FENCE SHALL BE FASTENED SECURELY TO THE FENCE POSTS WITH WIRE TIES.
 - FILTER CLOTH SHALL BE FASTENED SECURELY TO THE WOVEN WIRE/CHAIN LINK FENCE WITH TIES SPACED EVERY 24" AT THE TOP AND MID SECTION.
 - FILTER CLOTH SHALL BE EMBEDDED A MINIMUM OF 8" INTO THE GROUND WITH AN ADDITIONAL 6" MINIMUM TOE EMBEDMENT.
 - WHEN TWO SECTIONS OF FILTER CLOTH ADJOIN EACH OTHER, THEY SHALL BE OVERLAPPED BY 6" AND FOLDED.
 - MAINTENANCE SHALL BE PERFORMED AS NEEDED AND SILT BUILDUPS REMOVED WHEN "BULGES" DEVELOP IN THE SILT FENCE, OR WHEN SILT REACHES 50% OF FENCE HEIGHT.
 - FILTER FABRIC SHALL BE MIRAFI 100 OR APPROVED EQUAL.

TYPE "C" SILT FENCE
NOT TO SCALE



Cleanout
NOT TO SCALE

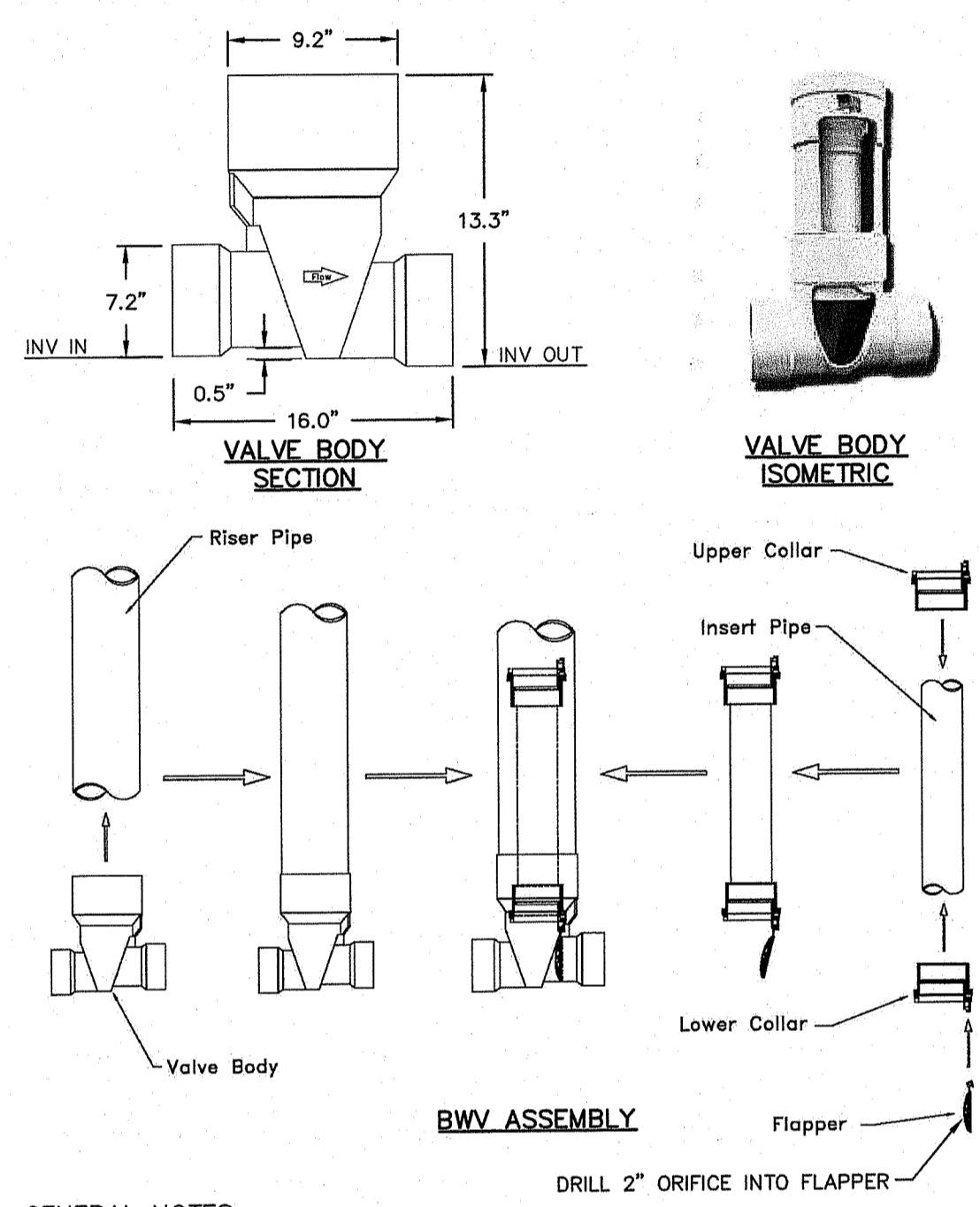


SILT FENCE INSTALLATION FOR CATCH BASINS AT LOW POINTS

STRAW BALE FILTER INSTALLATION FOR CATCH BASINS AT LOW POINTS

- NOTES:**
- STORMWATER INLETS WHICH DO NOT DISCHARGE TO SEDIMENT TRAPS OR BASINS MUST BE PROTECTED UNTIL THE TRIBUTARY AREAS ARE STABILIZED.
 - SEDIMENT MUST BE REMOVED FROM INLET PROTECTION AFTER EACH STORM.
 - REFER TO LONG TERM/SHORT TERM MAINTENANCE NOTES FOR TIMING OF PLACEMENT AND REMOVAL OF EROSION CONTROL ELEMENTS.

Catch Basin Erosion Control
NOT TO SCALE



VALVE BODY SECTION

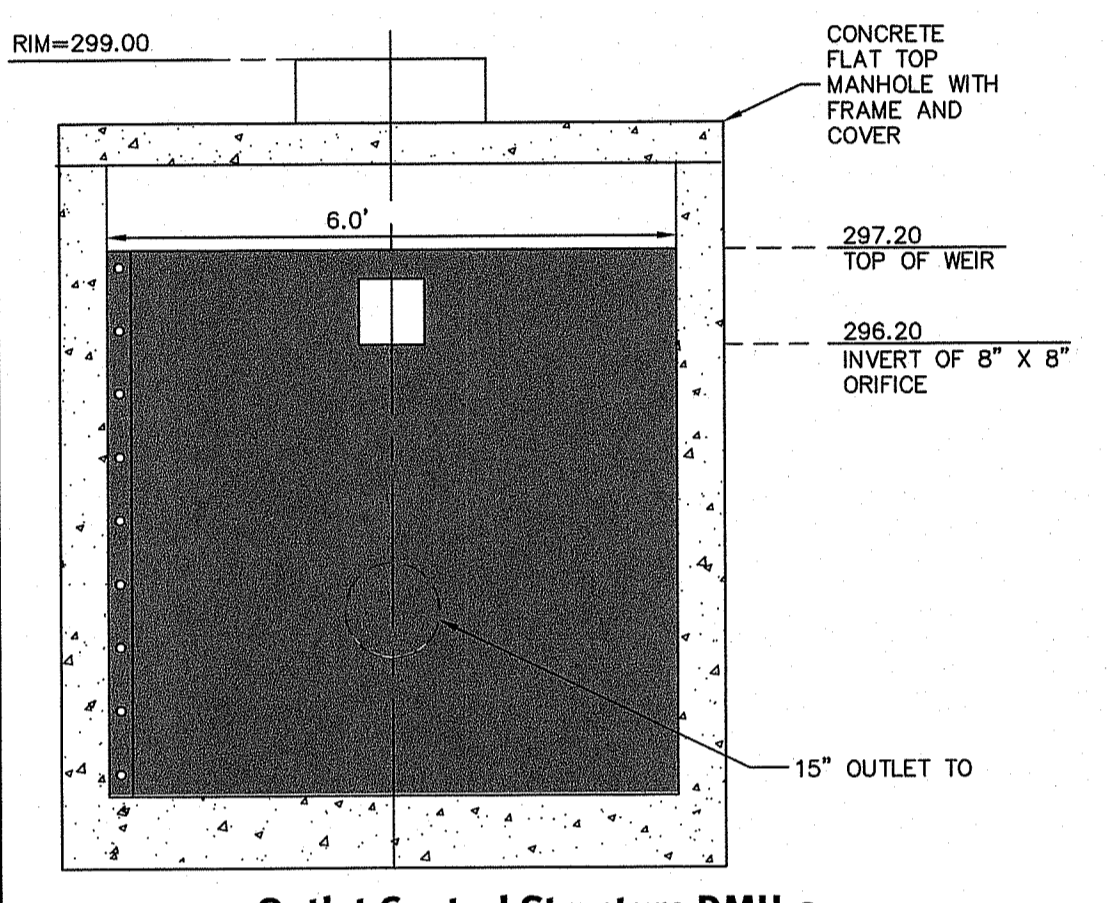
VALVE BODY ISOMETRIC

BWV ASSEMBLY

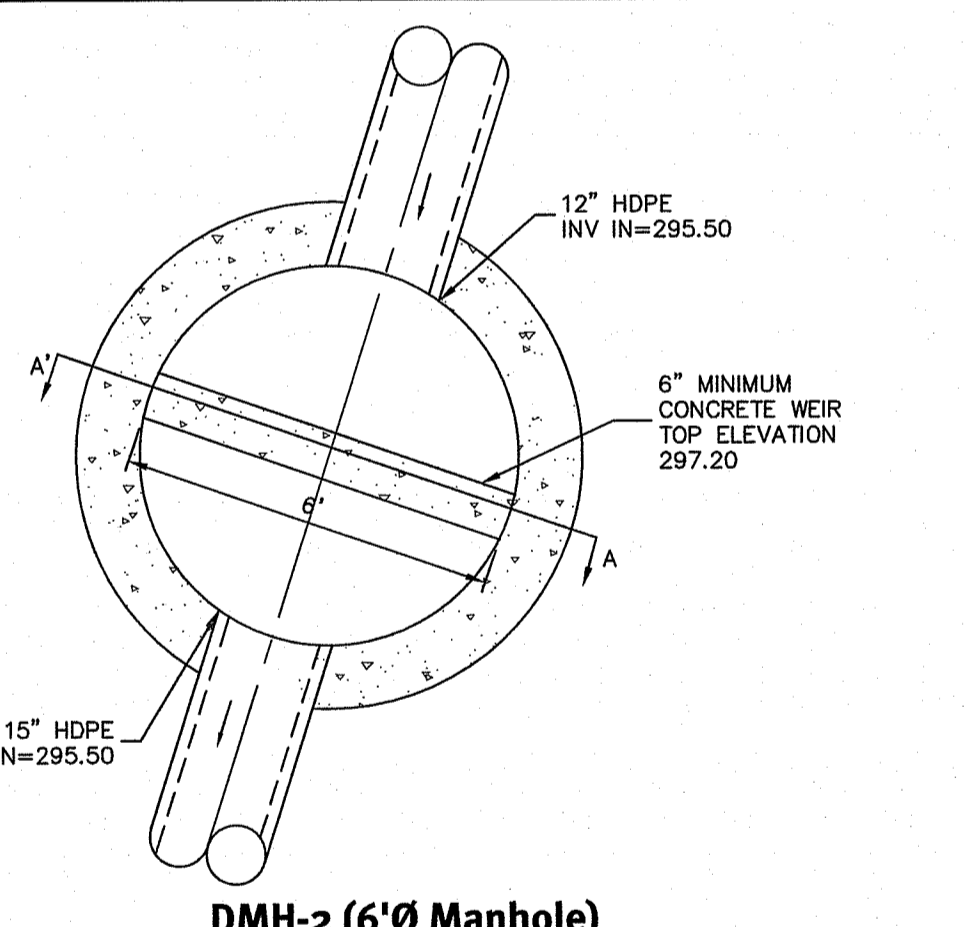
- GENERAL NOTES:**
- BWV SHALL BE INSTALLED IN PROPOSED 4" PVC HORIZONTAL SEWER LINE TO REDUCE/PREVENT DAMAGE TO PROPOSED BUILDING FROM SEWAGE BACKUP.
 - BWV TO BE INSTALLED IN A LEVEL POSITION AND ON NOMINALLY HORIZONTAL LINES ONLY.
 - BWV SHALL HAVE A 0.5" (0.04167") STEPPED DESIGN TO PROVIDE ADEQUATE FALL THROUGH THE VALVE BODY AND ENCOURAGE FLOW.
 - CRUSHED STONE BEDDING SHALL BE PLACED FROM 6" BELOW PIPE INVERT TO THE SPRINGLINE OF THE PIPE, UNLESS OTHERWISE DIRECTED BY THE INSPECTOR OR ENGINEER.
 - SEE [HTTP://WWW.RECTORSEAL.COM](http://www.rectorseal.com) FOR ADDITIONAL INFORMATION.
 - ALL MATERIALS AND DIMENSIONS TO BE VERIFIED WITH MANUFACTURE PRIOR TO CONSTRUCTION.
 - CONTRACTOR TO SUBMIT SHOP DRAWINGS TO ENGINEER PRIOR TO CONSTRUCTION.

RECTORSEAL BACKWATER DEVICE NOTE:
EACH RECTORSEAL BACKWATER DEVICE MUST BE INSTALLED BACKWARDS TO THE DIRECTION OF FLOW FROM THE UNDERDRAINS SO THAT THE FLAPPER WILL REMAIN IN THE CLOSED POSITION. A 2" ORIFICE MUST BE DRILLED IN EACH FLAPPER TO CONTROL FLOW FROM THE UNDERDRAINS. THE SITE CONTRACTOR MUST COORDINATE WITH THE DESIGN ENGINEER PRIOR TO STARTING CONSTRUCTION.

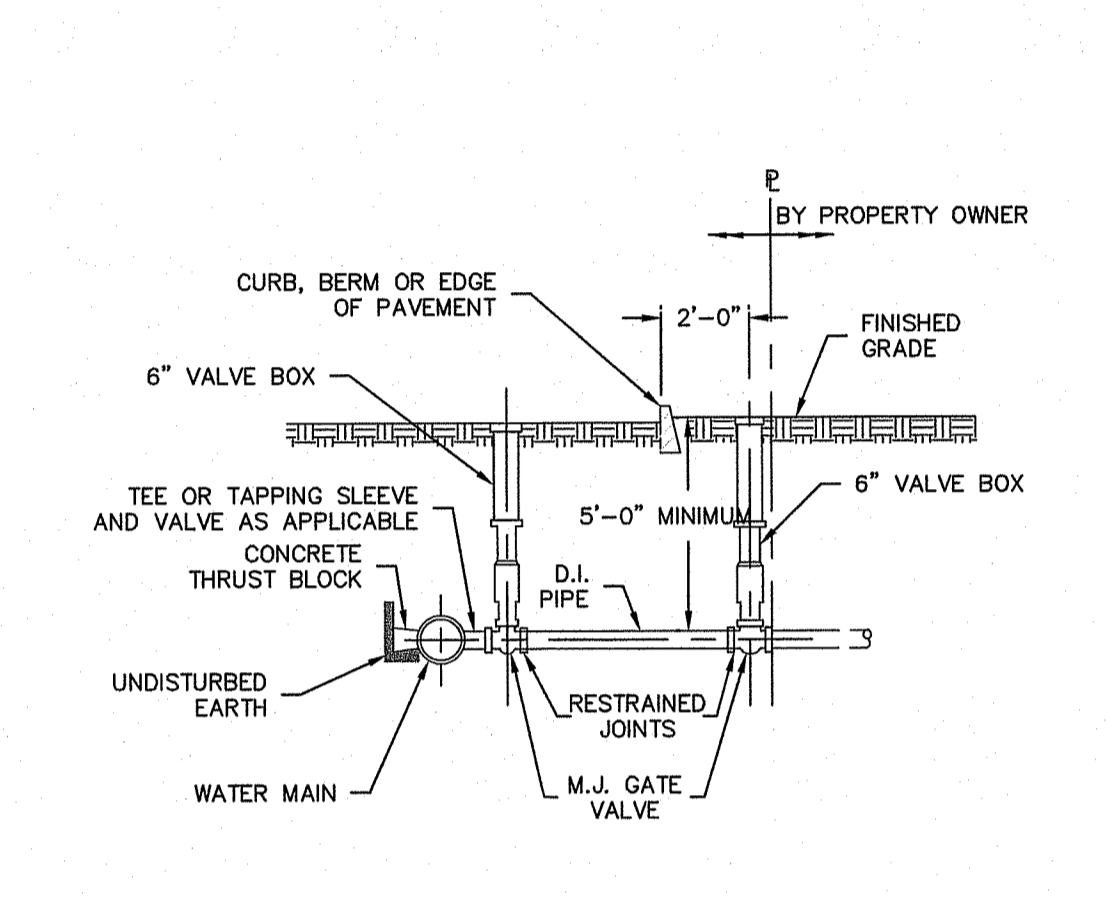
RectorSeal 4" PVC Extendable Clean Check Back Water Valve (BWV) Detail or Approved Equal
NOT TO SCALE



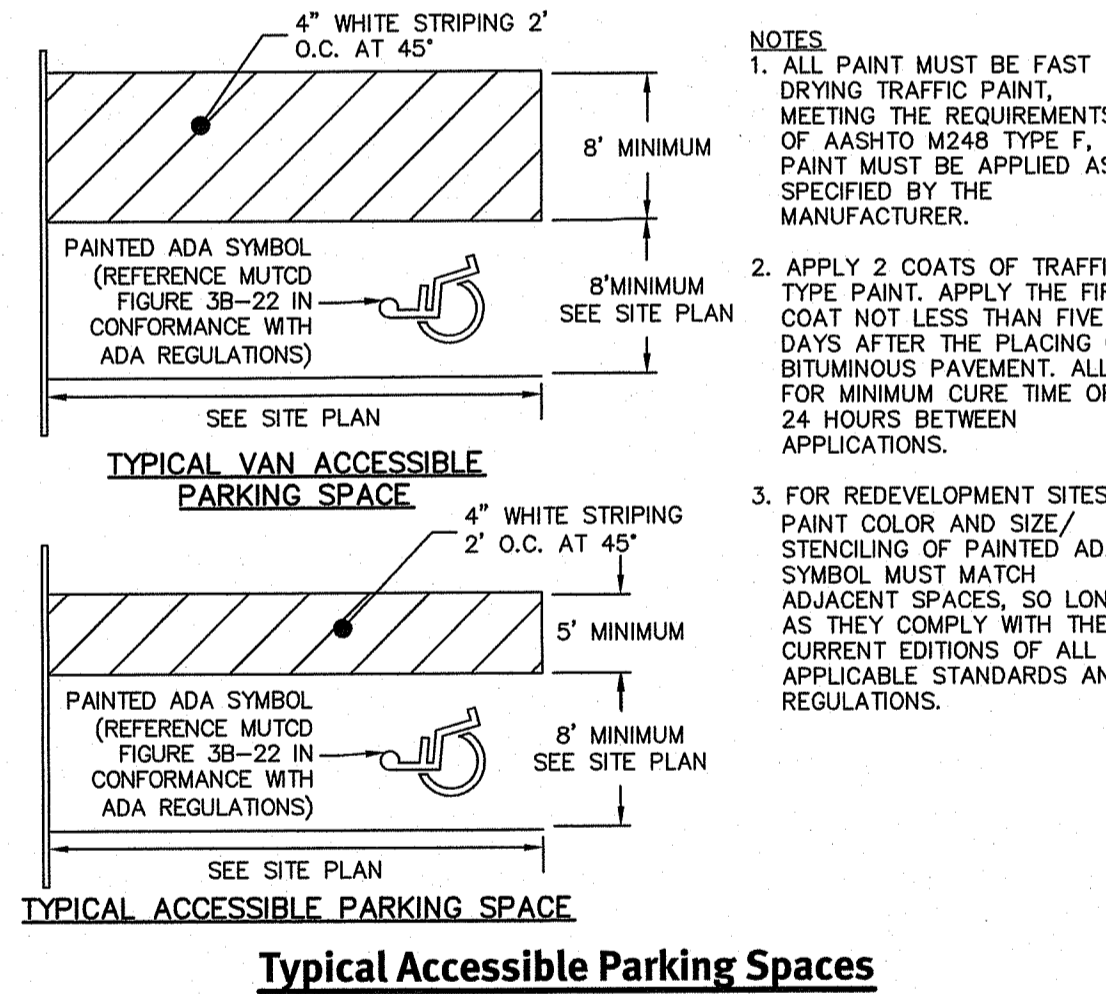
Outlet Control Structure DMH-2 (6"Ø) - Cross Section A-A



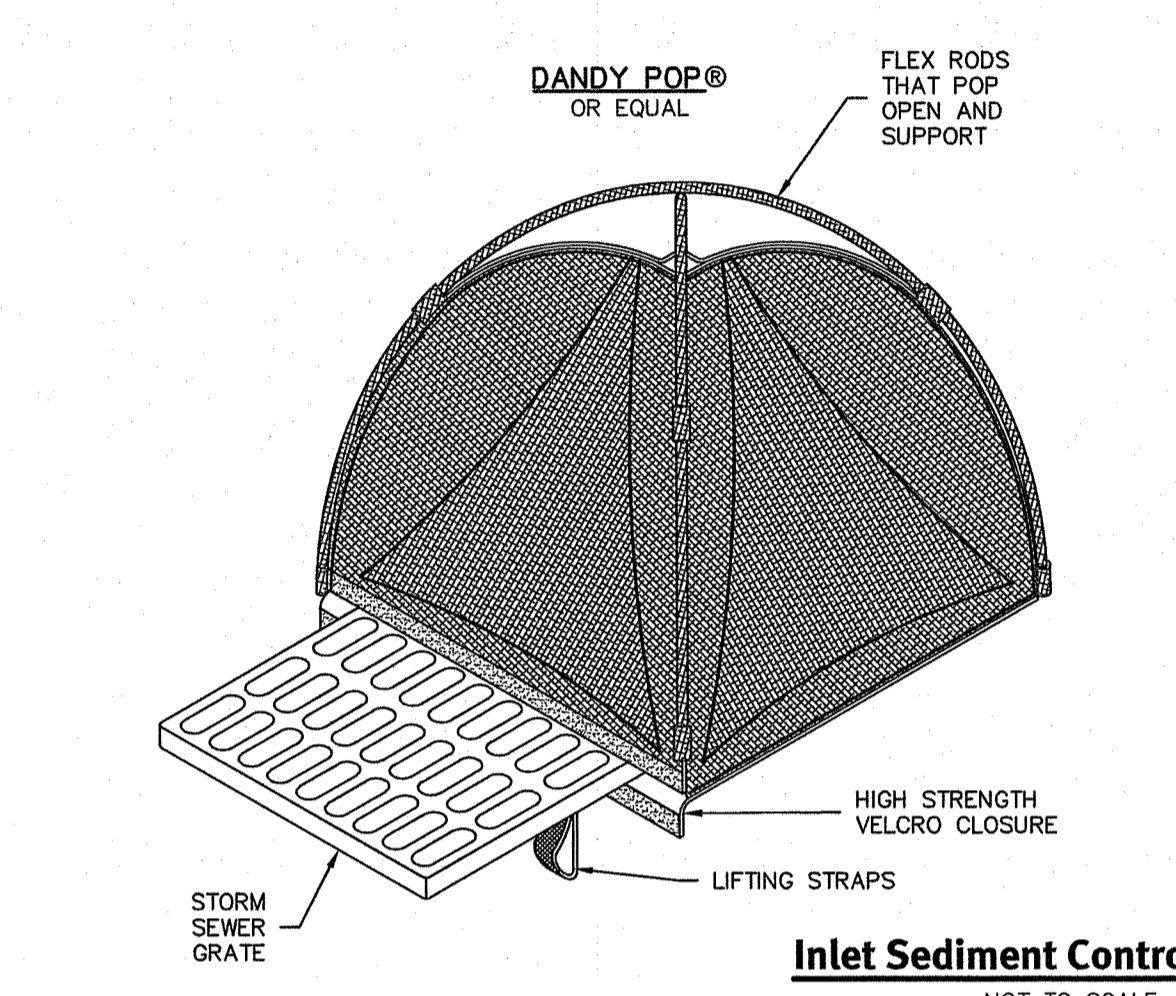
DMH-2 (6"Ø) Manhole
SCALE 1"=3'



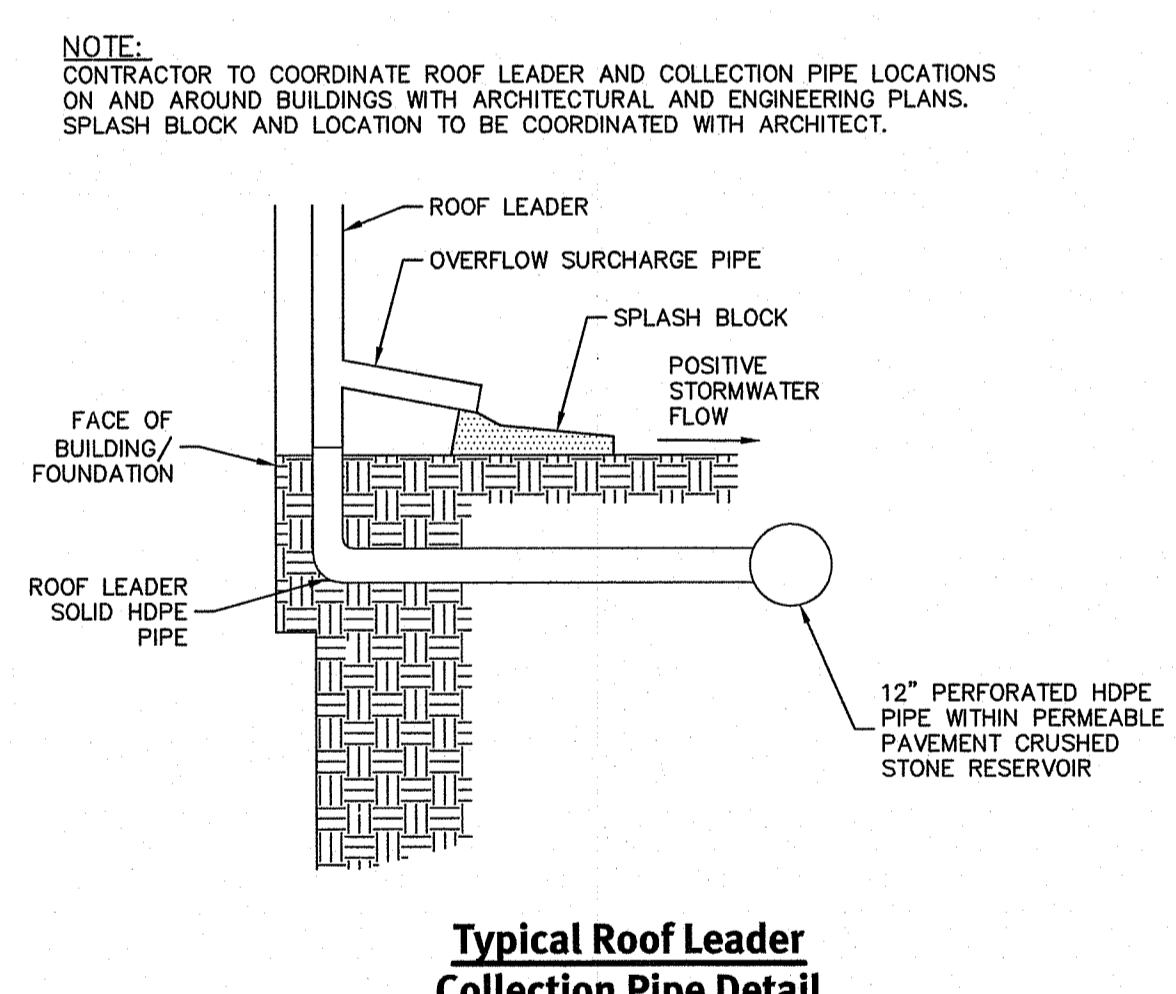
Water Service Connection Greater Than 4"
NOT TO SCALE



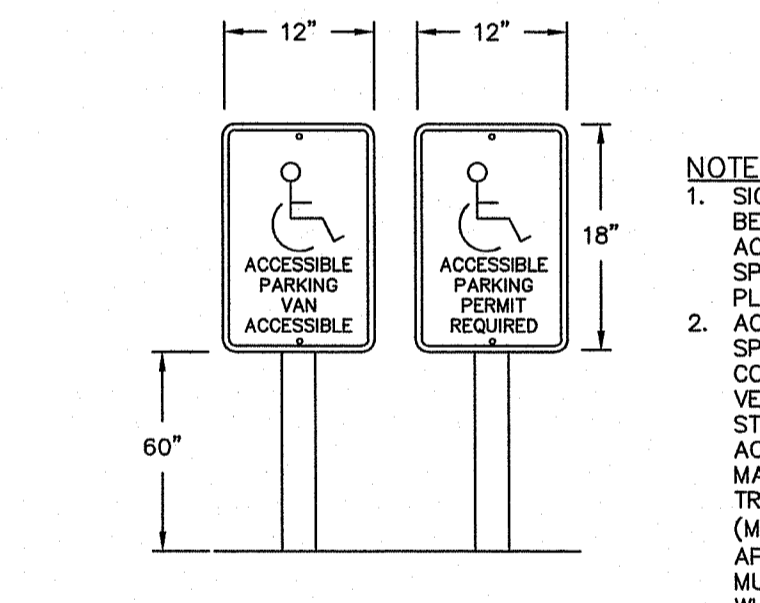
Typical Accessible Parking Spaces
NOT TO SCALE



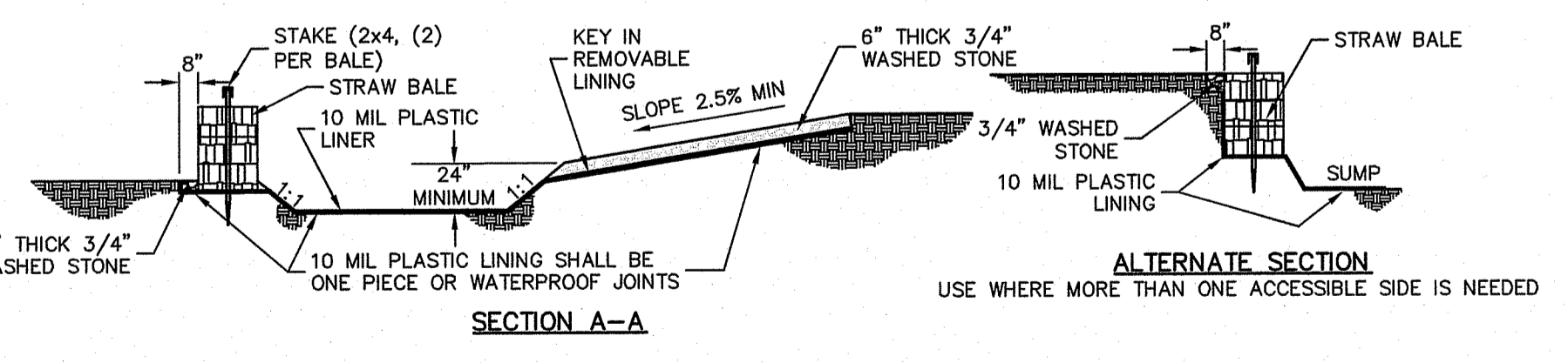
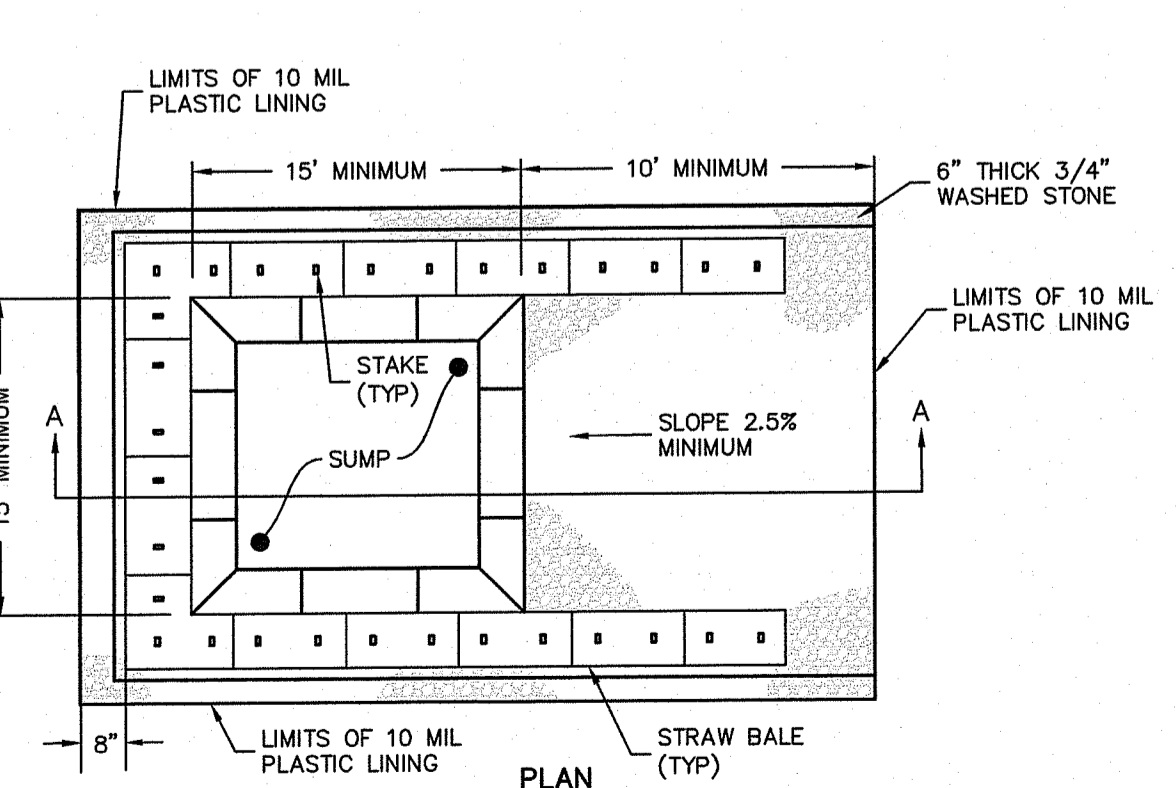
Inlet Sediment Control Devices
NOT TO SCALE



Typical Roof Leader Collection Pipe Detail
NOT TO SCALE



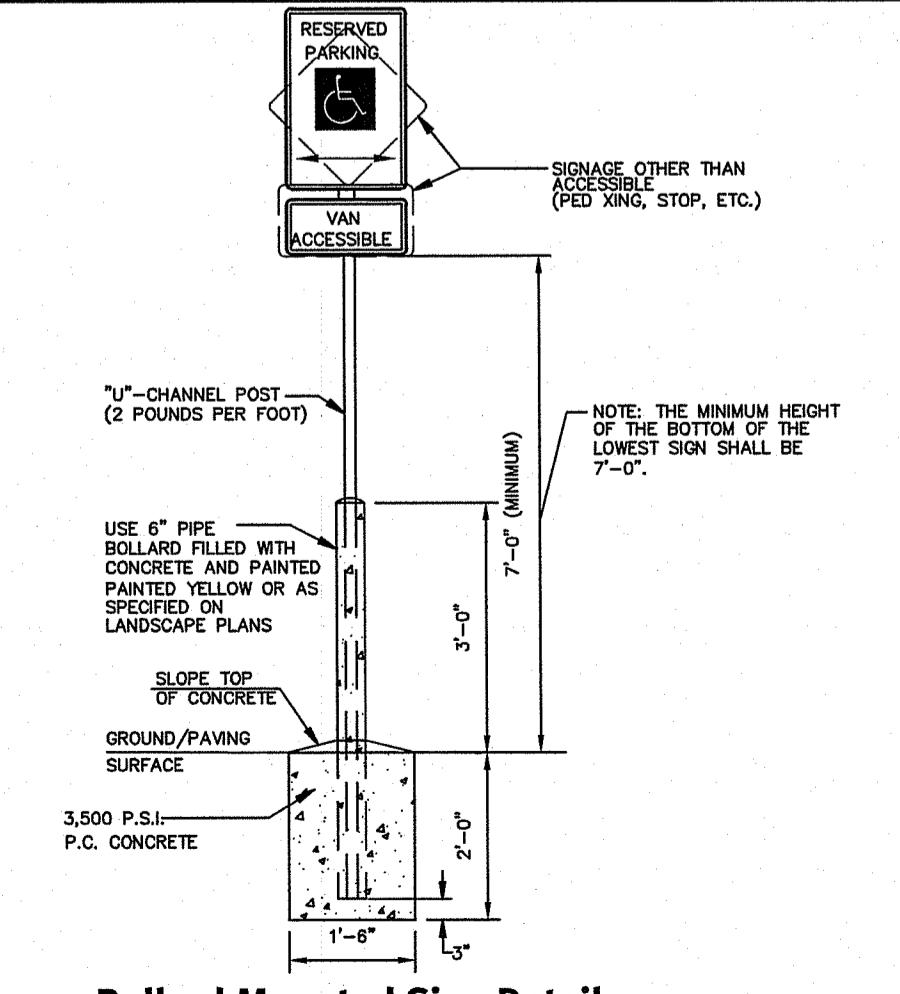
Typical Accessible Parking Post & Sign
NOT TO SCALE



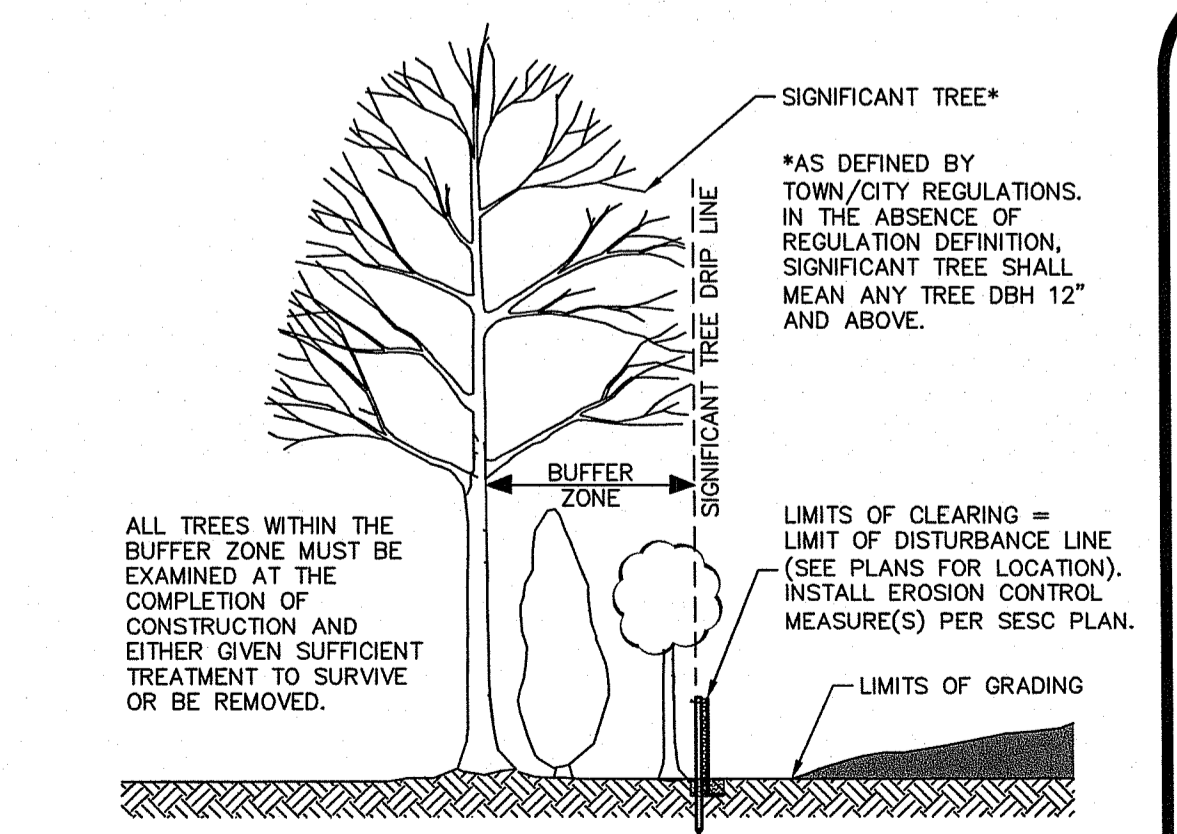
- NOTES:**
- PIT IS SPECIFICALLY DESIGNATED, DIKED AND IMPERVIOUS CONTAINMENT TO PREVENT CONTACT BETWEEN CONCRETE WASH AND STORMWATER.
 - WASH WATER SHALL NOT BE ALLOWED TO FLOW TO SURFACE WATER.
 - FACILITY MUST HOLD SUFFICIENT VOLUME TO CONTAIN CONCRETE WASTE WITH A MINIMUM FREEBOARD OF 12".
 - FACILITY SHALL NOT BE FILLED BEYOND 95% CAPACITY UNLESS A NEW FACILITY IS CONSTRUCTED.
 - SAWCUT PORTLAND CEMENT CONCRETE, RESIDUE FROM SAWCUT AND GRINDING TO BE DISPOSED OF IN THE PIT.
 - CONCRETE WASHOUTS SHALL BE LOCATED A MINIMUM OF 100' FROM DRAINAGE WAYS, INLETS, AND SURFACE WATERS.
 - MANUFACTURED CONCRETE WASHOUT DEVICES MAY BE USED IF REMOVED FROM THE SITE WHEN 95% FULL CAPACITY.

WASHOUT SIGN

Concrete Washout Area
NOT TO SCALE

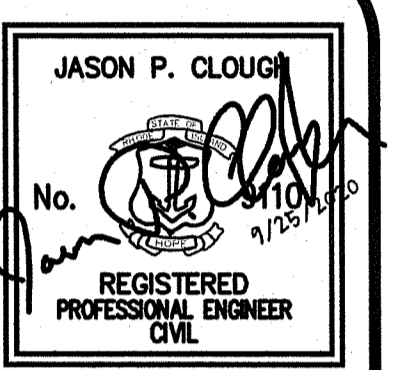


Bollard Mounted Sign Detail
NOT TO SCALE



NOTE: LIMIT OF DISTURBANCE (LOD) MUST BE STAKED OUT PRIOR TO CONSTRUCTION. IF ANY SIGNIFICANT TREE DRIP LINE IS ENCRANCHING PAST THE LOD, CONTRACTOR MUST CONTACT SITE ENGINEER PRIOR TO CONSTRUCTION.

Limit of Disturbance at Vegetation
NOT TO SCALE



DEPARTMENT OF ENVIRONMENTAL MANAGEMENT
OFFICE OF WATER RESOURCES
FRESHWATER WETLANDS PROGRAM
APPROVED WITH CONDITIONS
AS SPECIFIED IN THE LETTER OF APPROVAL
DATED OCT 22 2020
NO CHANGES ALLOWED WITHOUT APPROVED PLANS MUST BE AT

No.	Date	Description	By
1	08-25-2020	Preparation of Plans	J.P.C.
2	08-25-2020	Preparation of Plans	J.P.C.
3	08-25-2020	Preparation of Plans	J.P.C.
4	08-25-2020	Preparation of Plans	J.P.C.
5	08-25-2020	Preparation of Plans	J.P.C.
6	08-25-2020	Preparation of Plans	J.P.C.
7	08-25-2020	Preparation of Plans	J.P.C.
8	08-25-2020	Preparation of Plans	J.P.C.
9	08-25-2020	Preparation of Plans	J.P.C.
10	08-25-2020	Preparation of Plans	J.P.C.
11	08-25-2020	Preparation of Plans	J.P.C.
12	08-25-2020	Preparation of Plans	J.P.C.
13	08-25-2020	Preparation of Plans	J.P.C.
14	08-25-2020	Preparation of Plans	J.P.C.
15	08-25-2020	Preparation of Plans	J.P.C.
16	08-25-2020	Preparation of Plans	J.P.C.
17	08-25-2020	Preparation of Plans	J.P.C.
18	08-25-2020	Preparation of Plans	J.P.C.
19	08-25-2020	Preparation of Plans	J.P.C.
20	08-25-2020	Preparation of Plans	J.P.C.
21	08-25-2020	Preparation of Plans	J.P.C.
22	08-25-2020	Preparation of Plans	J.P.C.
23	08-25-2020	Preparation of Plans	J.P.C.
24	08-25-2020	Preparation of Plans	J.P.C.
25	08-25-2020	Preparation of Plans	J.P.C.
26	08-25-2020	Preparation of Plans	J.P.C.
27	08-25-2020	Preparation of Plans	J.P.C.
28	08-25-2020	Preparation of Plans	J.P.C.
29	08-25-2020	Preparation of Plans	J.P.C.
30	08-25-2020	Preparation of Plans	J.P.C.
31	08-25-2020	Preparation of Plans	J.P.C.
32	08-25-2020	Preparation of Plans	J.P.C.
33	08-25-2020	Preparation of Plans	J.P.C.
34	08-25-2020	Preparation of Plans	J.P.C.
35	08-25-2020	Preparation of Plans	J.P.C.
36	08-25-2020	Preparation of Plans	J.P.C.
37	08-25-2020	Preparation of Plans	J.P.C.
38	08-25-2020	Preparation of Plans	J.P.C.
39	08-25-2020	Preparation of Plans	J.P.C.
40	08-25-2020	Preparation of Plans	J.P.C.
41	08-25-2020	Preparation of Plans	J.P.C.
42	08-25-2020	Preparation of Plans	J.P.C.
43	08-25-2020	Preparation of Plans	J.P.C.
44	08-25-2020	Preparation of Plans	J.P.C.
45	08-25-2020	Preparation of Plans	J.P.C.
46	08-25-2020	Preparation of Plans	J.P.C.
47	08-25-2020	Preparation of Plans	J.P.C.
48	08-25-2020	Preparation of Plans	J.P.C.
49	08-25-2020	Preparation of Plans	J.P.C.
50	08-25-2020	Preparation of Plans	J.P.C.

Detail Sheet-1
Old Louisquiset Condos
Prepared for:
BBWW, LLC c/o Brian Bucci
North Smithfield, Rhode Island
P.O. Box 6187, Warwick, Rhode Island 02887

