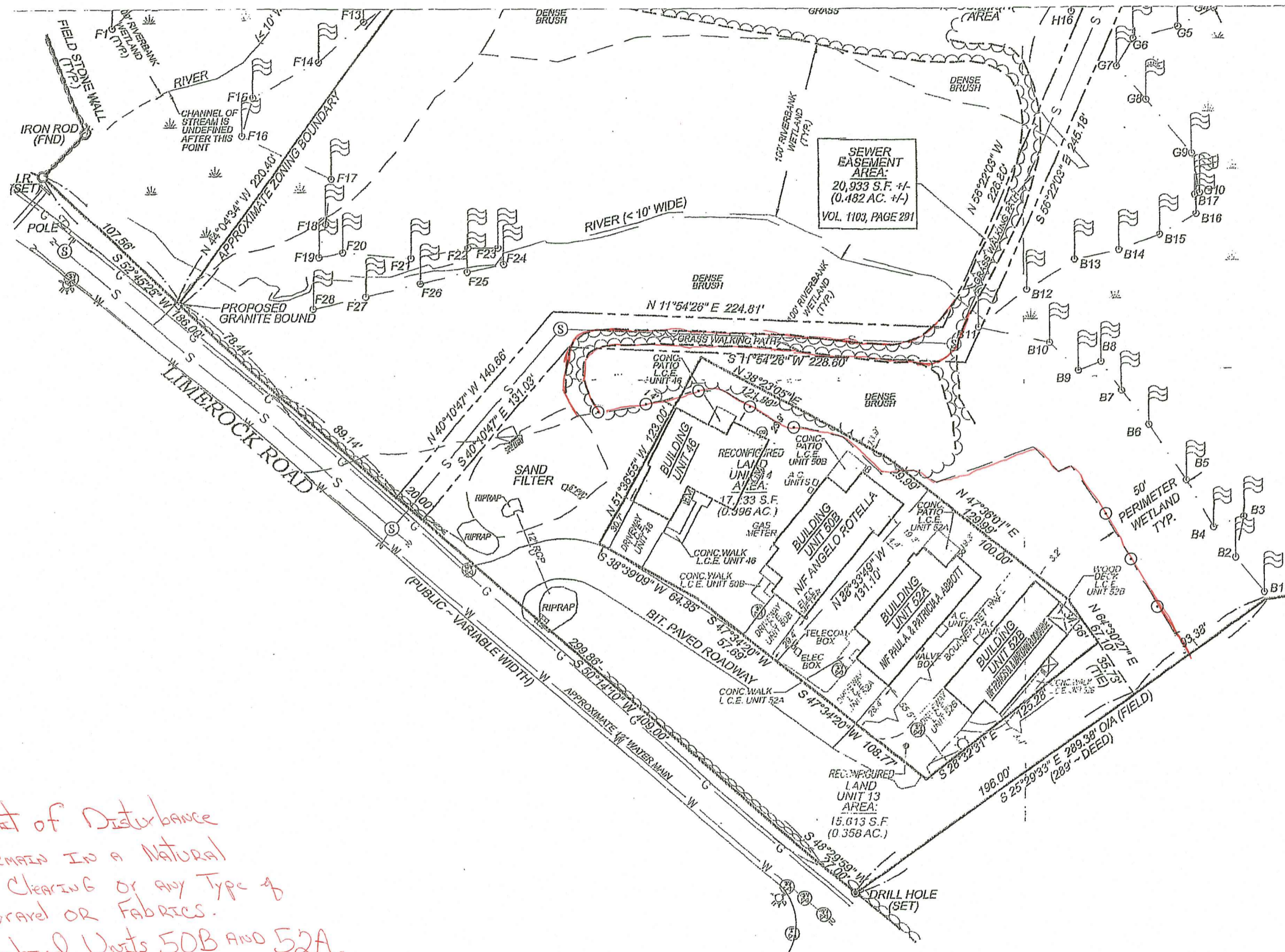
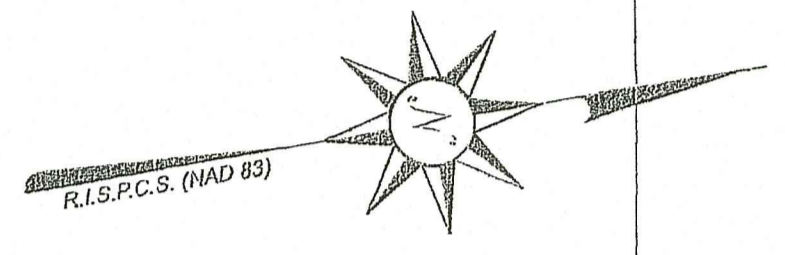
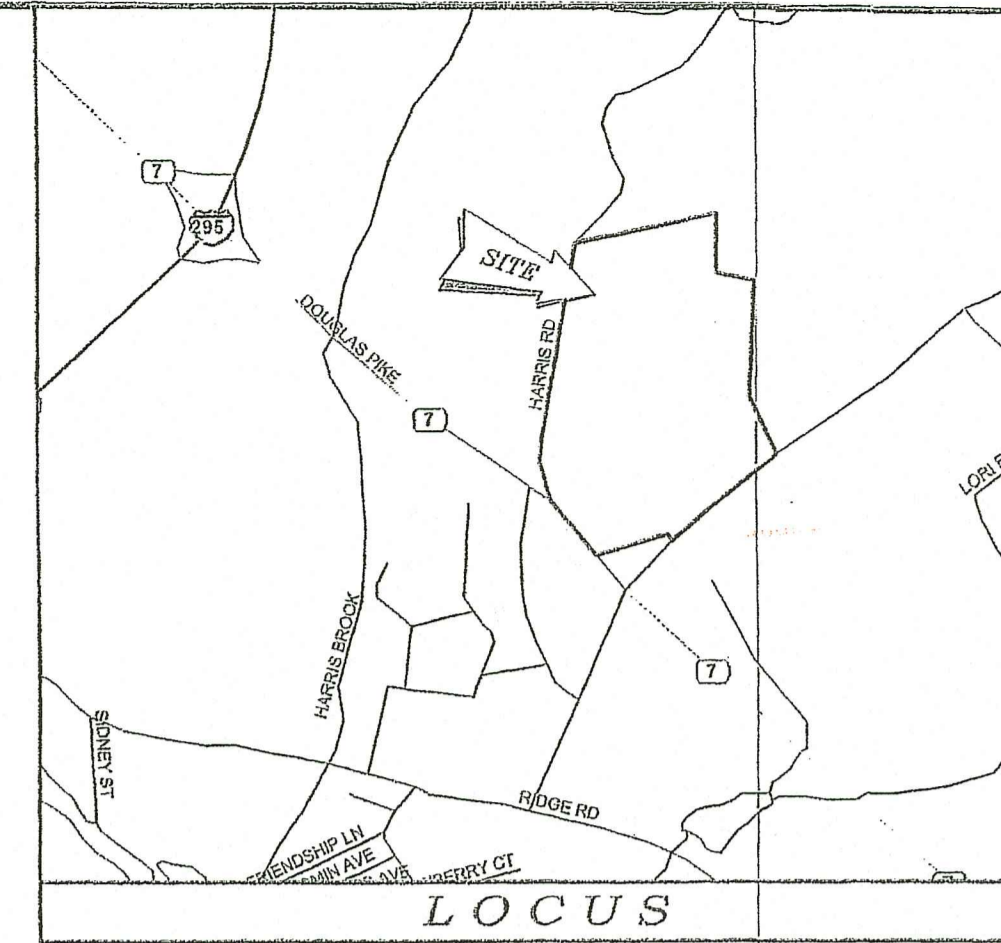


REVISION DATE: MARCH 22, 2023



*— = RI DEM Approved Limit of Disturbance
 Riverbank and Perimeter Wetlands must remain in a Natural Condition free of Mowing, Pruning, Clearing or any Type of Weed Control Materials such as Stone, Gravel or Fabrics.
 Buffer Zone markers must also remain behind Units 50B and 52A.*

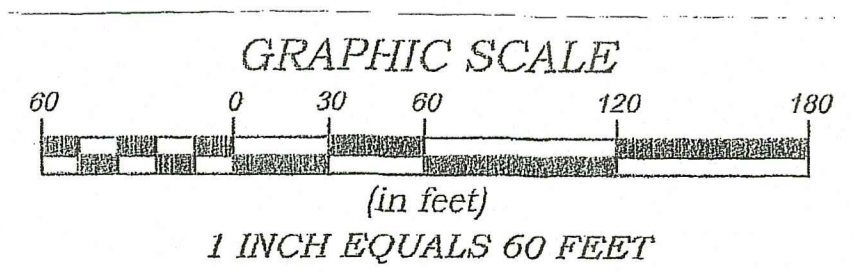
**RI DEPARTMENT OF ENVIRONMENTAL MANAGEMENT
 OFFICE OF WATER RESOURCES
 FRESHWATER WETLANDS PROGRAM
 APPROVED WITH CONDITIONS AS
 SPECIFIED IN THE LETTER OF APPROVAL
 DATED: MAY 03 2023 FILE # 20-0224
 NO CHANGES ALLOWED WITHOUT PRIOR APPROVAL
 APPROVED PLANS MUST BE AT CONSTRUCTION SITE**

NOTES & REFERENCES TO SITE PLAN:

-PROPOSED LIMIT OF DISTURBANCE FOR GRASS WALKING PATH EQUALS 8 FEET IN WIDTH

LEGENDS AND ABBREVIATIONS:

○ DOT WITHIN CIRCLE INDICATES THE ADDITIONAL PROPOSED BUFFER ZONE MARKER SIGNS



NO.	DATE	REVISION	CHECKED BY
1	09/08/2022	ASBUILT LOCATION OF GRASS PATH	BJT
THE RESIDENCES AT LIMEROCK CONDOMINIUM ASBUILT PLAN HARRIS ROAD & LIMEROCK ROAD SMITHFIELD, RHODE ISLAND			PROJECT NO. 12- SCALE: 1" = DATE: 12/04/20 DRAWN BY: BJT/ CHECKED BY:
THE RESIDENCES AT LIMEROCK CONDOMINIUM ASSOCIATION 8A FAIRWAY DRIVE SMITHFIELD, RHODE ISLAND 02917			FILENAME: PHASE 1 of 1 SH DRAWING #: ASE

Environmental Manager
 MAR 22 2023
 Office of Water Resources