

Plan Set

RIDEM Request for Preliminary
 Determination Application
 Date Issued: 12/18/2020

Proposed H17 115kV Transmission Line Structure 2 Guy Wire Plank Anchor Installations

North Smithfield, Rhode Island

Sheet Index

Number	Drawing Title	Latest Issue
1	Notes	12/18/2020
2	Site Access and BMP Plan	12/18/2020
3-5	Details	12/18/2020



Site Location Map

nationalgrid



Environmental Management

DEC 22 2020

Office of Water Resources

DEPARTMENT OF ENVIRONMENTAL MANAGEMENT
 OFFICE OF WATER RESOURCES
 FRESHWATER WETLANDS PROGRAM
 APPROVED WITH CONDITIONS
 AS SPECIFIED IN THE LETTER OF APPROVAL
 DATED 1/13/2021 FILE # 20-0297
 NO CHANGES ALLOWED WITHOUT PRIOR APPROVAL
 APPROVED PLANS MUST BE AT CONSTRUCTION SITE

Nancy L. Freeman

**EXISTING CONDITIONS INFORMATION:
REFERENCES:**


1. TRANSMISSION LINE RIGHT-OF-WAY (ROW) LIMITS AND EASEMENT BOUNDARIES BASED ON THE FOLLOWING T-SHEETS PROVIDED BY THE NARRAGANSETT ELECTRIC COMPANY. ROW AND EASEMENT LINES ARE APPROXIMATE AND INTENDED TO BE A GRAPHICAL REPRESENTATION. THIS SHALL NOT BE CONSTRUED TO REPRESENT AN ACTUAL BOUNDARY SURVEY AND IS SUBJECT TO SUCH CHANGES AS AN ACCURATE BOUNDARY SURVEY MAY DISCLOSE.
T-SHEET NO.:
T-3190-12, DATED: FEBRUARY 27, 1957, LAST REVISED 06/25/2004
T-5621-2, DATED: AUGUST 10, 1972, LAST REVISED 11/13/2012

2. WETLAND DELINEATION WAS PERFORMED BY VHB, PROVIDENCE OFFICE. FLAG LOCATIONS WERE LOCATED BY A GLOBAL POSITIONING SYSTEM (GPS) FIELD SURVEY CONDUCTED BY VHB IN FEBRUARY 2020. THIS SURVEY CONFORMS TO A CLASS IV STANDARD AS DEFINED IN THE PROCEDURAL AND TECHNICAL STANDARDS FOR PERFORMING LAND SURVEYING IN THE STATE OF RHODE ISLAND AND PROVIDENCE PLANTATIONS.

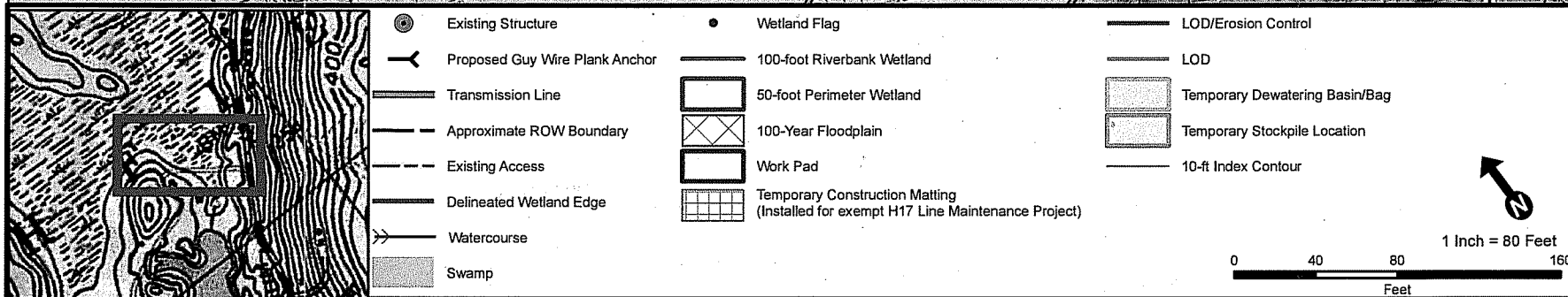
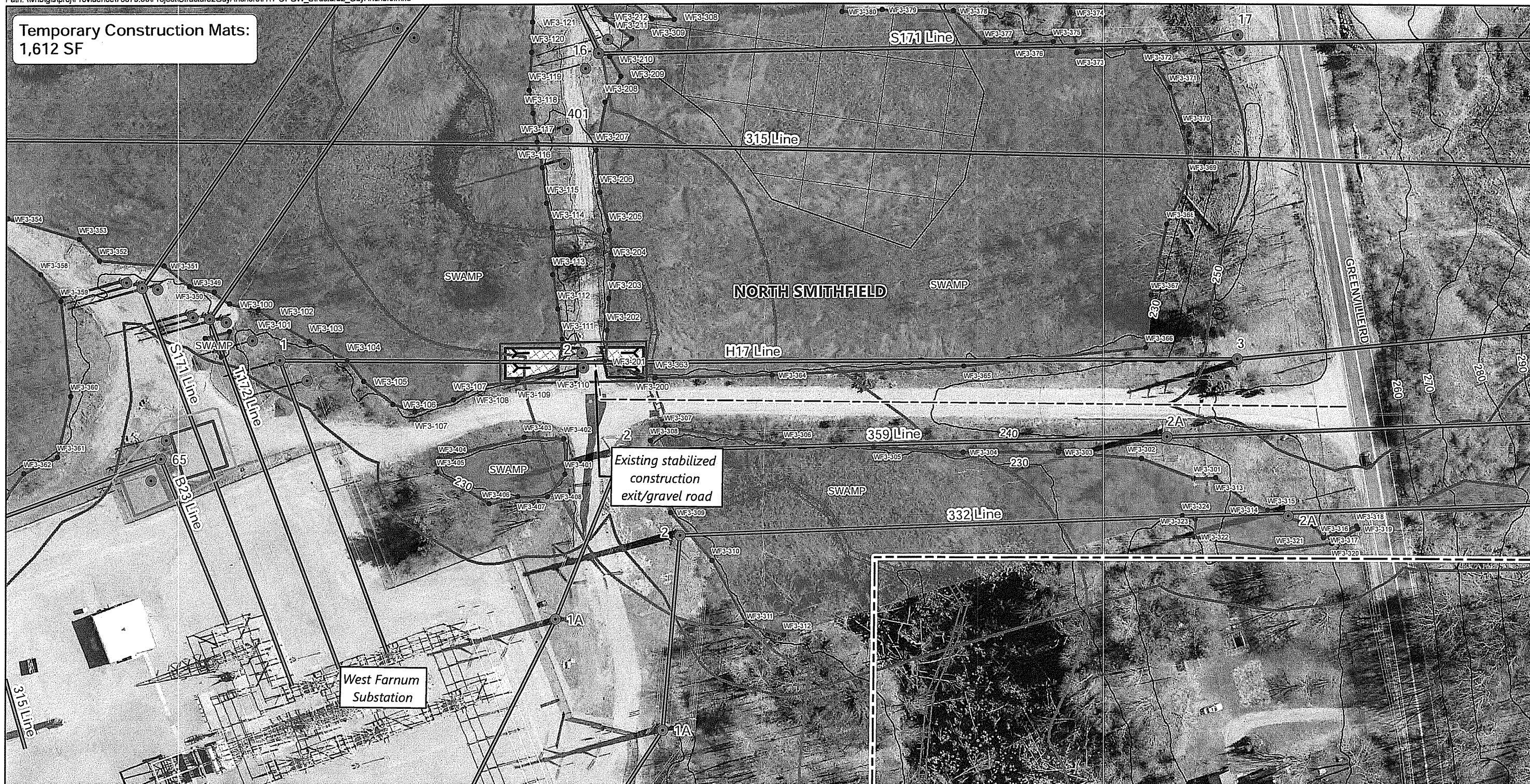
EROSION AND SEDIMENT CONTROL NOTES:

1. PRIOR TO STARTING ANY SITE WORK, THE CONTRACTOR SHALL NOTIFY APPROPRIATE AGENCIES AND SHALL INSTALL EROSION CONTROL MEASURES AS SHOWN ON THE PLANS AND AS IDENTIFIED IN FEDERAL, STATE AND LOCAL APPROVAL DOCUMENTS PERTAINING TO THIS PROJECT.
2. A SOIL EROSION AND SEDIMENTATION CONTROL PLAN HAS BEEN DESIGNED TO PROTECT ON-SITE WETLANDS AND WATERCOURSES AND OFF-SITE AREAS DURING AND AFTER CONSTRUCTION.
3. IN AREAS WHERE HIGH RUNOFF VELOCITIES OR HIGH SEDIMENT LOADS ARE EXPECTED, TWO LINES OF COMPOST FILTER SOCKS WILL BE INSTALLED BACK TO BACK.
4. ONCE WORK IS COMPLETE, FINAL SURFACE TREATMENT CONSISTING OF STRAW OR CELLULOSE MULCH WILL BE APPLIED TO STABILIZE THE DISTURBED AREAS ANY SOIL DISTURBANCE ASSOCIATED WITH EQUIPMENT ACCESS TO STRUCTURES OR STRUCTURE EXCAVATIONS SHOULD BE MULCHED WITH STRAW ON ALL DISTURBED AREAS AS SOON AS POSSIBLE, BUT NOT MORE THAN 14 DAYS AFTER THE CONSTRUCTION ACTIVITY IN THAT AREA HAS TEMPORARILY OR PERMANENTLY CEASED.
5. IN ACCORDANCE WITH THE NPDES GENERAL PERMIT, ALL STORMWATER CONTROL MEASURES, DISTURBED AREAS, AREAS USED FOR THE STORAGE OF MATERIALS THAT ARE EXPOSED TO PRECIPITATION (INCLUDING UNSTABILIZED SOIL STOCKPILES), DISCHARGE LOCATIONS AND LOCATIONS WHERE VEHICLES ENTER OR EXIT THE SITE MUST BE INSPECTED BY OR UNDER THE SUPERVISION OF THE APPLICANT AT LEAST ONCE EVERY SEVEN (7) CALENDAR DAYS AND WITHIN TWENTY-FOUR (24) HOURS AFTER ANY STORM EVENT WHICH GENERATES AT LEAST 0.25 INCHES OF RAINFALL PER TWENTY-FOUR (24) HOUR PERIOD AND/OR AFTER A SIGNIFICANT AMOUNT OF RUNOFF. SUCH AREAS SHALL BE INSPECTED FOR EVIDENCE OF, OR THE POTENTIAL FOR, POLLUTANTS ENTERING THE WATERS OF THE STATE OR A SEPARATE STORM SEWER SYSTEM. ALL BMPs SHALL BE MAINTAINED TO PREVENT UNCONTROLLED RELEASES OF MEASURABLE AMOUNTS OF SEDIMENT OR SEDIMENT LADEN WATER FROM TRAVELING BEYOND THE LIMITS OF DISTURBANCE.
6. SEDIMENT SHALL BE REMOVED FROM BEHIND BARRIERS IF GREATER THAN 6 INCHES DEEP OR AS NEEDED.
7. DAMAGED OR DETERIORATED EROSION/SEDIMENTATION CONTROL ITEMS WILL BE REPAIRED IMMEDIATELY AFTER IDENTIFICATION.
8. EROSION CONTROL MEASURES SHALL REMAIN IN PLACE UNTIL ALL DISTURBED EARTH HAS BEEN SECURELY STABILIZED. ONCE THE SITE IS STABILIZED, THE EROSION CONTROLS SHALL BE REMOVED AND PROPERLY DISPOSED OF BY THE CONTRACTOR.
9. IN THE EVENT OF A FUEL SPILL OR EQUIPMENT MALFUNCTION RESULTING IN A RELEASE OF HAZARDOUS MATERIAL, ALL WORK WILL BE STOPPED IN THIS AREA UNTIL THE RELEASE/SPILL IS CLEANED UP.
10. EQUIPMENT USED FOR CONSTRUCTION WILL BE PROPERLY MAINTAINED AND OPERATED TO REDUCE THE CHANCES OF SPILL OCCURRENCES OF PETROLEUM PRODUCTS. REFUELING OF EQUIPMENT WILL BE REQUIRED TO CARRY SPILL CONTAINMENT AND PREVENTION DEVICES (I.E., ABSORBENT PADS, CLEAN UP RAGS, FIVE GALLON CONTAINERS, ABSORBENT MATERIAL, ETC.) AT ALL TIMES. IN ADDITION, MAINTENANCE EQUIPMENT AND REPLACEMENT PARTS FOR CONSTRUCTION EQUIPMENT WILL BE ON HAND TO REPAIR FAILURES AND STOP A SPILL IN THE EVENT OF EQUIPMENT MALFUNCTION.
11. ANY HAZARDOUS WASTE SPILLS SHALL BE CLEANED UP IMMEDIATELY, AND IF THE SPILL AMOUNT IS EQUAL TO OR EXCEEDS THE EPA REPORTABLE QUANTITY (RQ) FOR THAT SUBSTANCE IN ACCORDANCE WITH 40 CFR PARTS 1010, 117, OR 302, THE CONTRACTOR SHALL IMMEDIATELY CONTACT THE NATIONAL RESPONSE CENTER AT 1-800-424-8802. THE CONTRACTOR WILL ALSO BE RESPONSIBLE FOR SUBMITTING IN WRITING A DESCRIPTION OF THE RELEASE TO THE EPA REGIONAL OFFICE AND RIDEM, PROVIDING THE DATE AND CIRCUMSTANCES OF THE RELEASE AND THE STEPS TO BE TAKEN TO PREVENT ANOTHER RELEASE. DIRECTIONS FOR CLEANING UP SPILLS SHALL BE CLEARLY POSTED AT A DESIGNATED ON-SITE LOCATION AND CONSTRUCTION PERSONNEL SHALL BE MADE AWARE OF THE PROCEDURES AND LOCATION OF CLEANUP SUPPLIES. PERSONNEL SHALL WEAR APPROPRIATE PROTECTIVE GEAR AND HAVE PROPER TRAINING TO PREVENT INJURY FROM CONTACT WITH ANY HAZARDOUS SUBSTANCES.
12. NO GRADE CHANGES ARE PROPOSED.

APPROVED WITH CONDITIONS
 AS SPECIFIED IN THE LETTER OF APPROVAL
 DATED 1/13/2021 FILE # 20-0297
 NO CHANGES ALLOWED WITHOUT PRIOR APPROVAL
 APPROVED BY AN MUST AT CONSTRUCTION
Nancy L. Freeman

		<p align="center">Proposed H17 115kV Transmission Line Structure 2 Guy Wire Plank Anchor Installations</p> <p align="center">Notes</p> <p align="center">North Smithfield, Rhode Island</p> <p align="center">Page 1 of 5</p> <p align="center">Source: RIGIS, National Grid, VHB</p>	<p align="center">nationalgrid</p> 
--	--	--	--

Temporary Construction Mats:
1,612 SF



**Proposed H17 115kV Transmission Line
Structure 2 Guy Wire Plank Anchor Installations**
Access and BMP Plan
DEPARTMENT OF ENVIRONMENTAL MANAGEMENT
OFFICE OF ACCESS AND BMP PLANS
FRESHWATER WETLANDS PROGRAM
APPROVED CONDITIONS
North Smithfield, Rhode Island
AS SPECIFIED IN THE LETTER OF APPROVAL
DATED 1/13/2021 Page 2 of 5 #50-0297
Date: 12/18/2020
APPROVED PLANS MUST BE AT CONSTRUCTION SITE
Nancy Freeman



nationalgrid ENVIRONMENTAL GUIDANCE	Doc. No. EG-303NE
	Page: 7-19 Rev. No. 4
	Date: 02/20/18
SUBJECT: Access, Maintenance and Construction Best Management Practices Reference: EP No. 3 - Natural Resource Protection (Chapter 6)	

BMP DETAIL
SCALE: NONE

TYPICAL PLAN VIEW

SECTION A-A
TYPICAL MAT SECTION BOLTED TOGETHER

TYPICAL SECTION VIEW

GROUND AND/OR VEGETATION SURFACE
TRANSITION AS REQUIRED

NOTES:

1. TO BE INSTALLED IF NECESSARY TO PREVENT RUTTING, TO ACCESS STRUCTURES.
2. THIS DETAIL SHOWS TYPICAL DIMENSIONS. SOME CONTRACTOR'S CONSTRUCTION MATS ARE DIMENSIONALLY DIFFERENT FROM WHAT IS SHOWN HERE.
3. DEPENDENT ON SITE CONDITIONS, MULTIPLE LAYERS OF CONSTRUCTION MATS MAY BE INSTALLED.

BMP PICTURE

CM-3
CONSTRUCTION MAT LAYOUT
(WITH TRANSITION)

APPROVED BY VICE PRESIDENT, ENVIRONMENTAL SERVICES
PRINTED COPIES ARE NOT DOCUMENT CONTROLLED. FOR LATEST AUTHORIZED VERSION PLEASE REFER TO THE NATIONAL GRID ENVIRONMENTAL INFORMAT SITE.

Detail #1

nationalgrid ENVIRONMENTAL GUIDANCE	Doc. No. EG-303NE
	Page: 7-20 Rev. No. 4
	Date: 02/20/18
SUBJECT: Access, Maintenance and Construction Best Management Practices Reference: EP No. 3 - Natural Resource Protection (Chapter 6)	

BMP DETAIL
SCALE: NONE

WETLANDS

WETLANDS

NOTES:

1. ADD FILTER FABRIC AS NEEDED UNDER STONE TRANSITION RAMPS.
2. ALL MEASUREMENTS AND LOCATIONS ARE APPROXIMATE.

BMP PICTURE

CM-4
CONSTRUCTION MAT LAYOUT
(WITH TRANSITION AND BMPs)

APPROVED BY VICE PRESIDENT, ENVIRONMENTAL SERVICES
PRINTED COPIES ARE NOT DOCUMENT CONTROLLED. FOR LATEST AUTHORIZED VERSION PLEASE REFER TO THE NATIONAL GRID ENVIRONMENTAL INFORMAT SITE.

Detail #1

nationalgrid ENVIRONMENTAL GUIDANCE	Doc. No. EG-303NE
	Page: 7-4 Rev. No. 4
	Date: 02/20/18
SUBJECT: Access, Maintenance and Construction Best Management Practices Reference: EP No. 3 - Natural Resource Protection (Chapter 6)	

BMP DETAIL
SCALE: NONE

WORK AREA

AREA TO BE PROTECTED

SECTION

PLAN

NOTES:

1. PRODUCT TO BE FILTREX SILT SOX OR APPROVED EQUAL BY NATIONAL GRID ENVIRONMENTAL SCIENTIST.
2. ALL MATERIAL TO MEET FILTREX SPECIFICATIONS.
3. FILTER MEDIA FILL TO MEET APPLICATION REQUIREMENTS.
4. MESH CONTAINMENT MATERIAL SHOULD BE KNITTED PHOTODEGRADABLE OR BIODEGRADABLE MATERIAL WITH OPENING SIZES BETWEEN 1/8" - 3/8".
5. COMPOST MEDIA SHOULD HAVE PARTICLE SIZE WHERE 99% < 2", 50% > 1/2".
6. COMPOST MATERIAL TO BE DISPERSED ON SITE, AS DETERMINED BY NATIONAL GRID ENVIRONMENTAL SCIENTIST.

BMP PICTURE

SEC-4
SILT SOX

APPROVED BY VICE PRESIDENT, ENVIRONMENTAL SERVICES
PRINTED COPIES ARE NOT DOCUMENT CONTROLLED. FOR LATEST AUTHORIZED VERSION PLEASE REFER TO THE NATIONAL GRID ENVIRONMENTAL INFORMAT SITE.

Detail #2

DEPARTMENT OF ENVIRONMENTAL MANAGEMENT
 OFFICE OF WATER RESOURCES
 FRESHWATER PROTECTION PROGRAM
 APPROVED WITH CONDITIONS
 AS SPECIFIED IN THE LETTER OF APPROVAL
 DATED 1/13/2021 FILE # 20-02917
 NO CHANGES ALLOWED WITHOUT PRIOR APPROVAL
 APPROVED PLANS MUST BE AT CONSTRUCTION SITE
Nancy L. Freeman

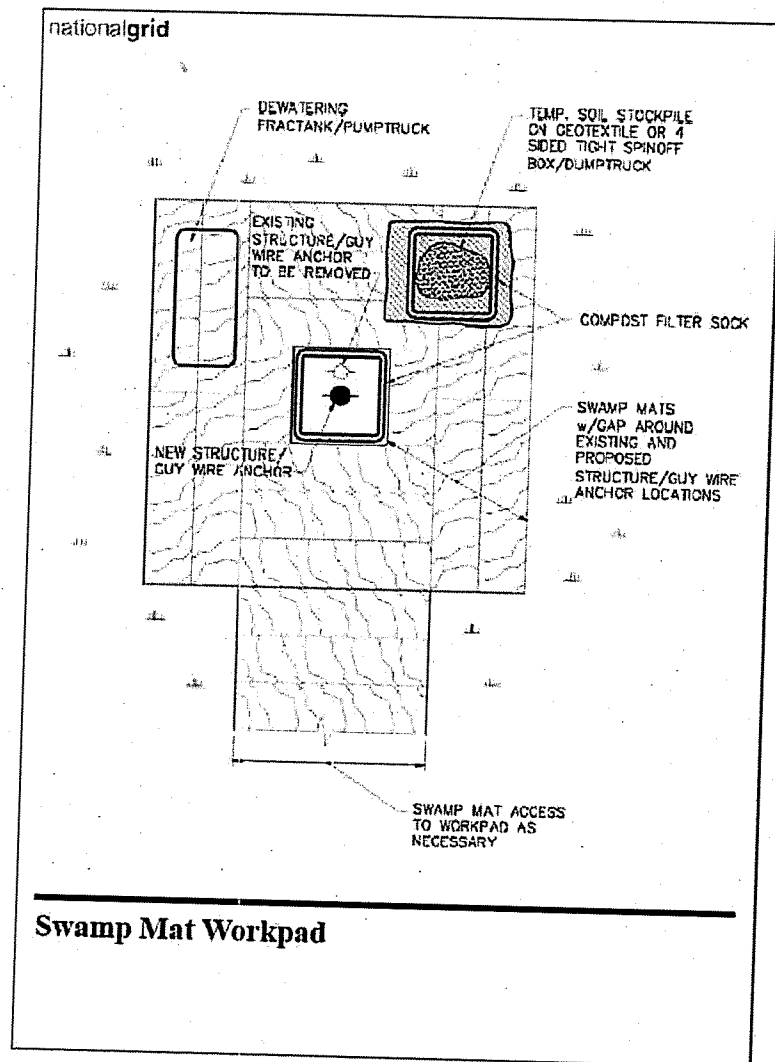
**Proposed H17 115kV Transmission Line
Structure 2 Guy Wire Plank Anchor Installations**

Details 1

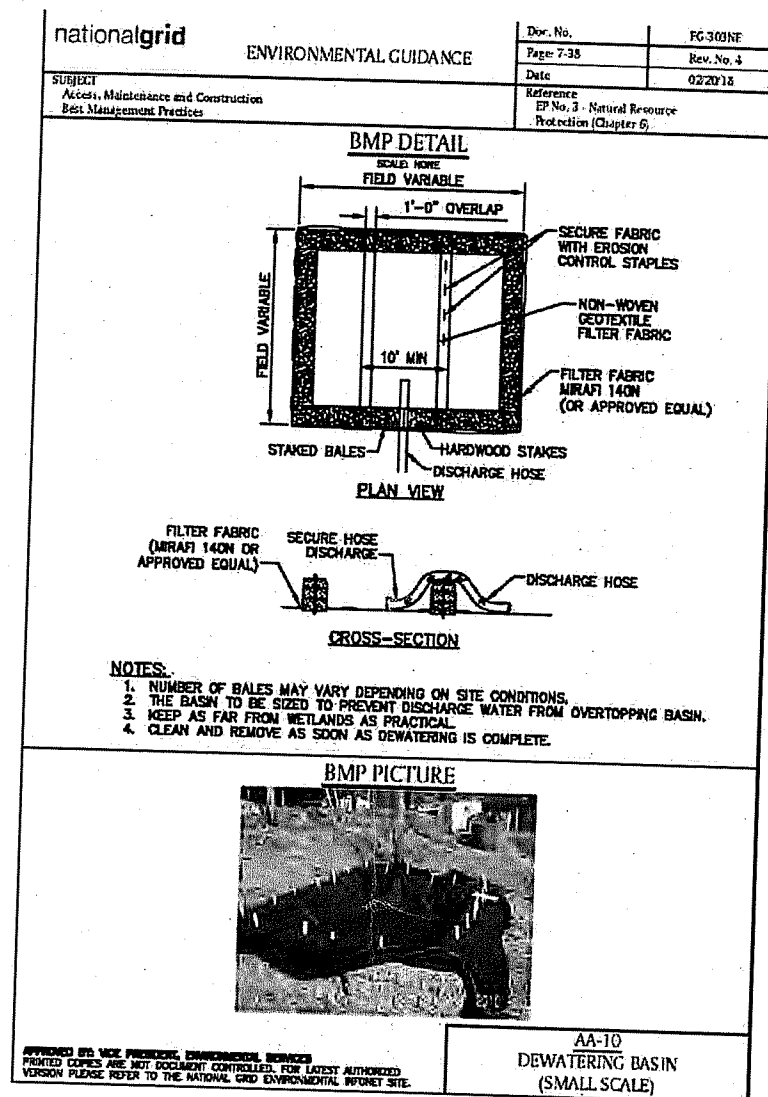
North Smithfield, Rhode Island

nationalgrid

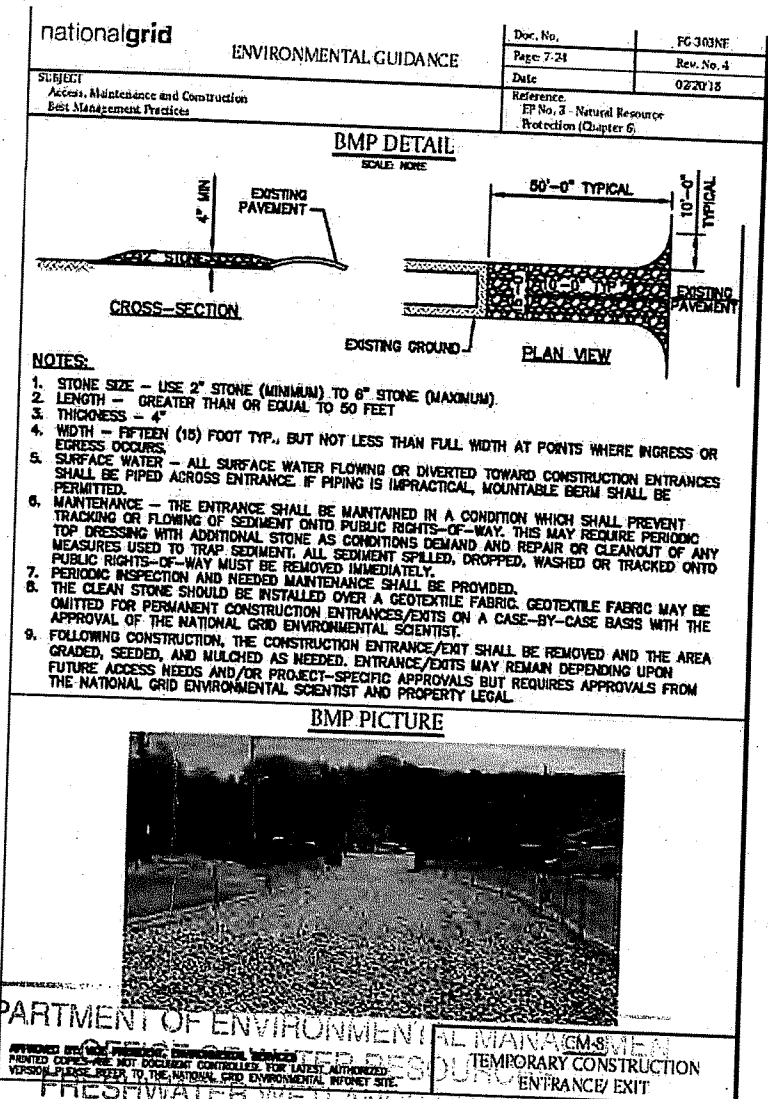




Detail #3



Detail #4



Detail #5

DEPARTMENT OF ENVIRONMENTAL MANAGEMENT
 APPROVED WITH CONDITIONS
 AS SPECIFIED IN THE LETTER OF APPROVAL
 DATED 1/13/2021 FILE # 20-0297
 NO CHANGES ALLOWED WITHOUT PRIOR APPROVAL
 APPROVED PLANS MUST BE AT CONSTRUCTION SITE
Nancy L. Freeman

**Proposed H17 115kV Transmission Line
 Structure 2 Guy Wire Plank Anchor Installations**

Details 2

North Smithfield, Rhode Island

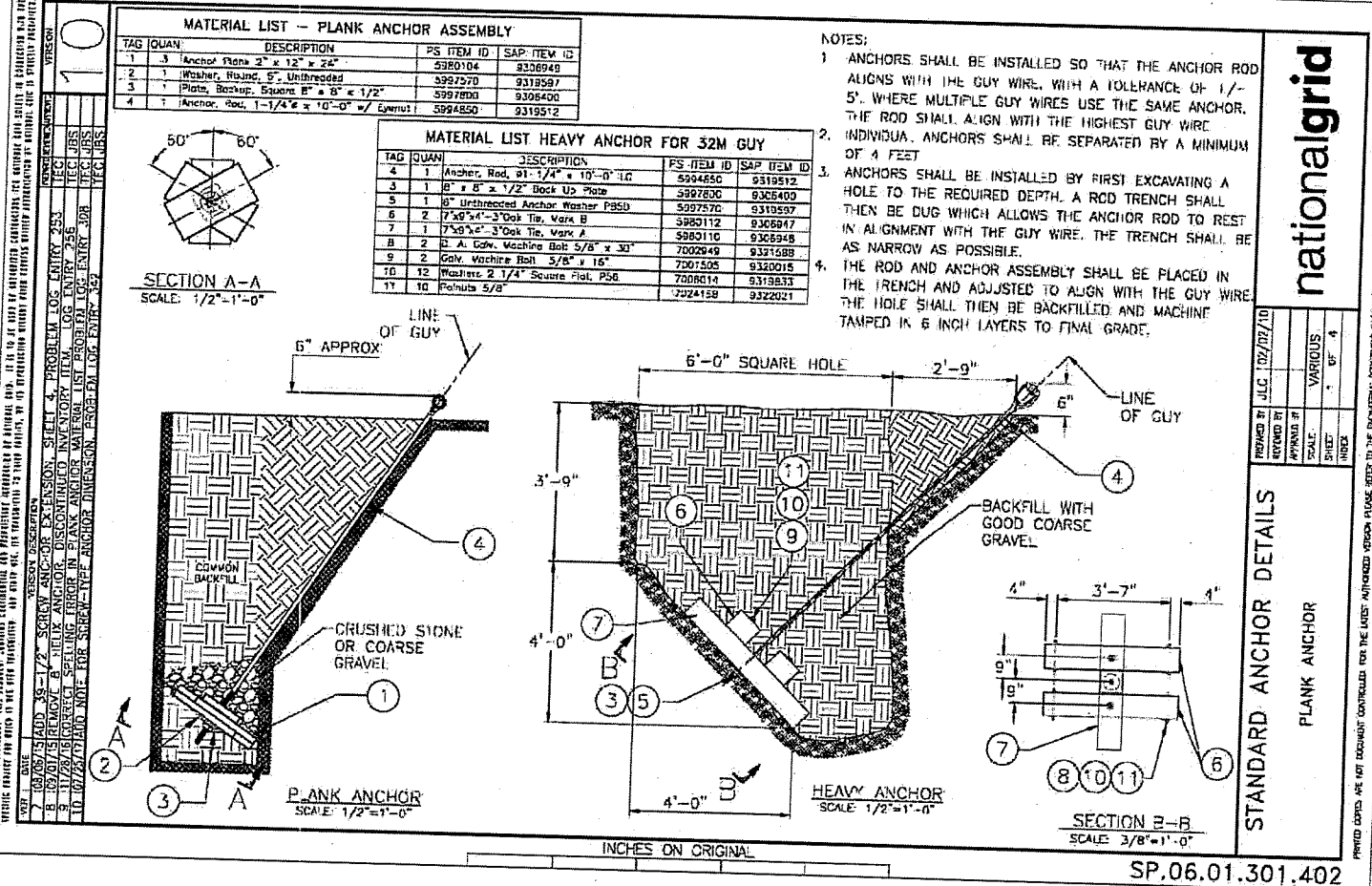
Page 4 of 5

Date: 12/18/2020

nationalgrid

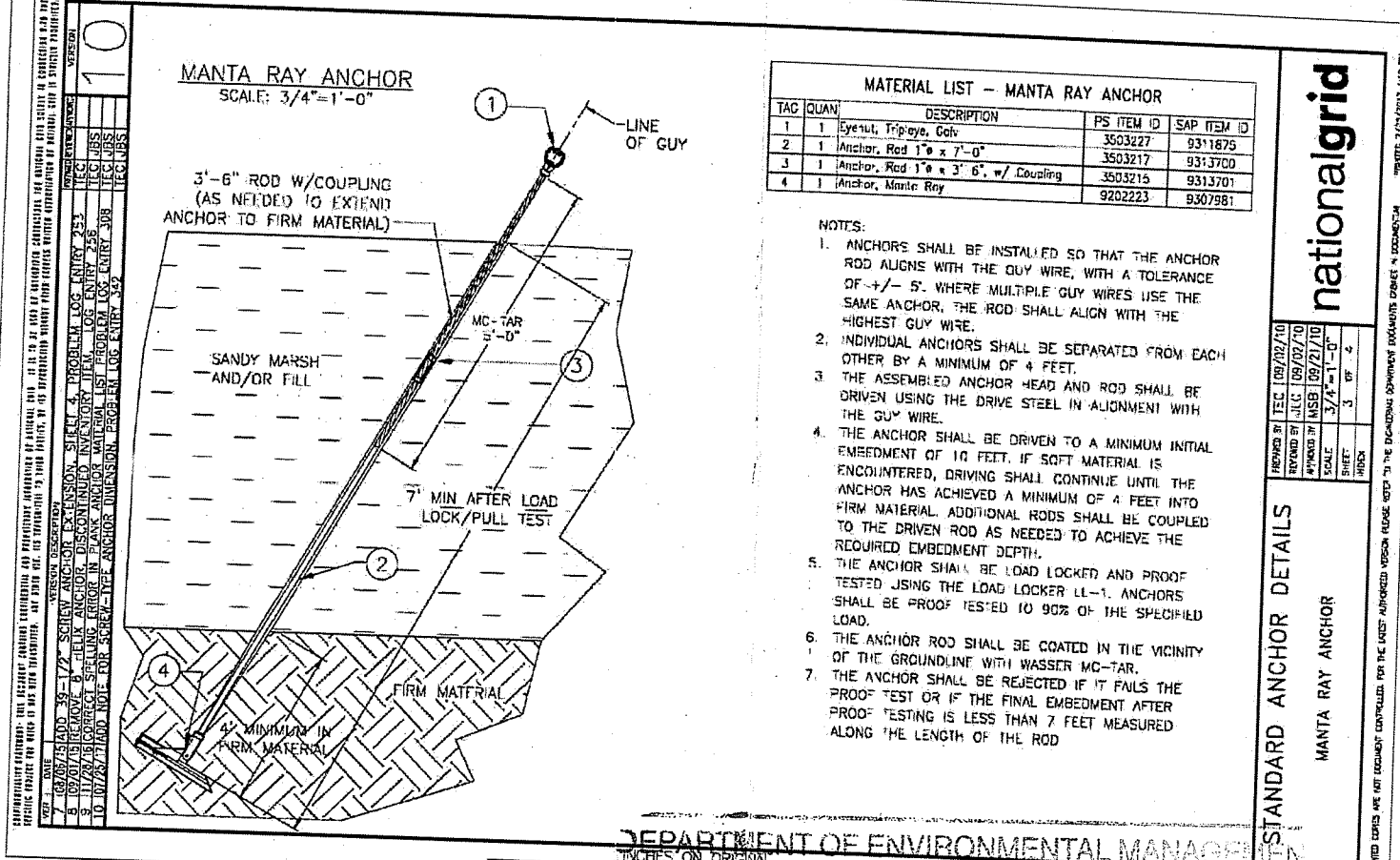


SP.06.01.301.402



Detail #6

SP.06.01.301.402



Detail #7

DEPARTMENT OF ENVIRONMENTAL MANAGEMENT
OFFICE OF WATER RESOURCES
SP.06.01.301.402

FRESHWATER WETLANDS PROGRAM
APPROVED WITH CONDITIONS
AS SPECIFIED IN THE LETTER OF APPROVAL
DATED 1/13/2021 FILE # 20-0297
NO CHANGES ALLOWED WITHOUT PRIOR APPROVAL
APPROVED PLANS MUST BE AT CONSTRUCTION SITE
Nancy L. Freeman

**Proposed H17 115kV Transmission Line
Structure 2 Guy Wire Plank Anchor Installations**

Details 3

North Smithfield, Rhode Island

nationalgrid

